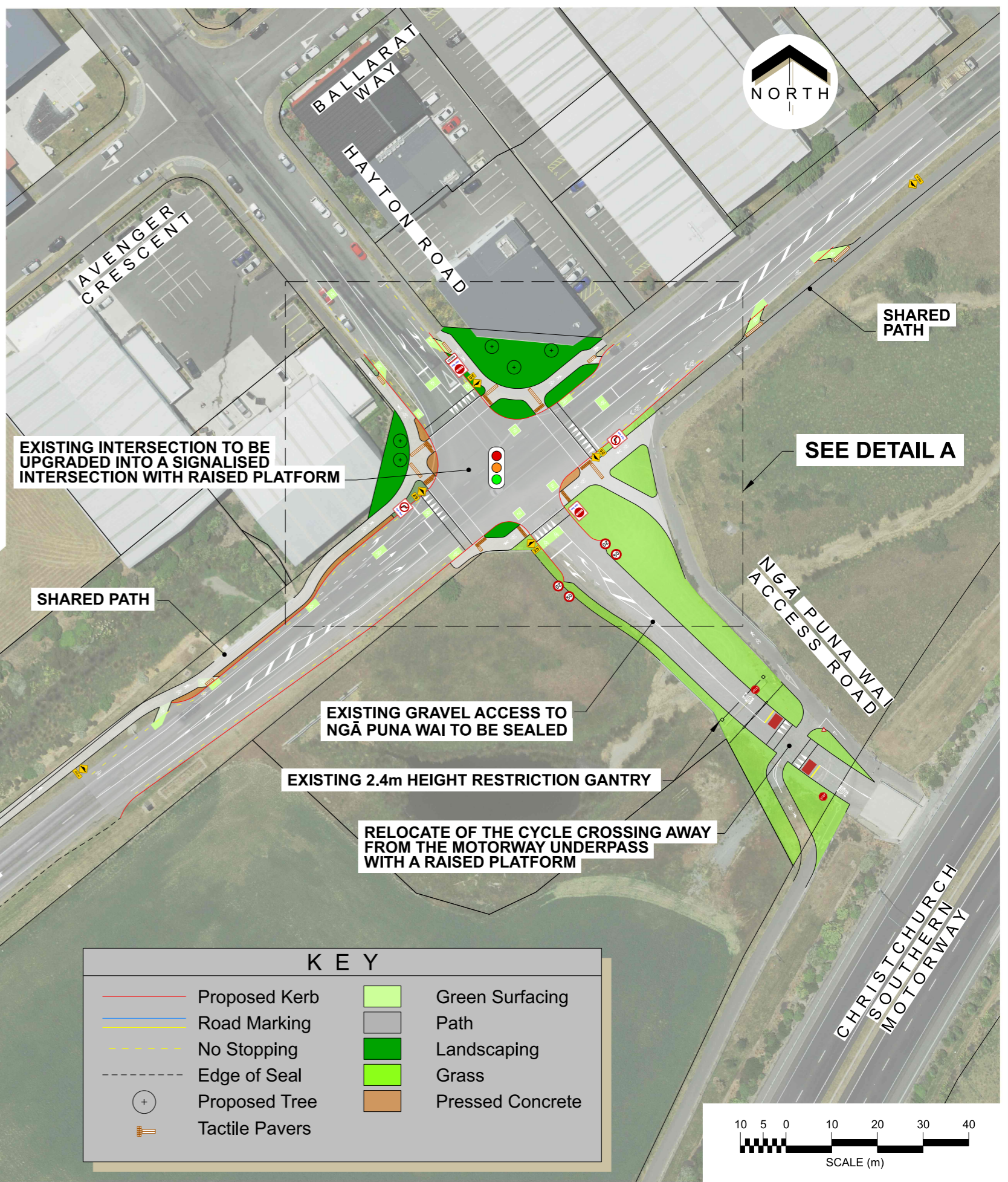


© Copyright Christchurch City Council / Aerial Photography Creative Commons Attribution 3.0 New Zealand License

Original size mm
100
50
30
10



DETAIL A



EXISTING INTERSECTION TO BE UPGRADED INTO A SIGNALISED INTERSECTION WITH RAISED PLATFORM

SHARED PATH

SEE DETAIL A

SHARED PATH

EXISTING GRAVEL ACCESS TO NGĀ PUNA WAI TO BE SEALED

EXISTING 2.4m HEIGHT RESTRICTION GANTRY

RELOCATE OF THE CYCLE CROSSING AWAY FROM THE MOTORWAY UNDERPASS WITH A RAISED PLATFORM

NEW SHARED PATH CONNECTION

KEY			
	Proposed Kerb		Green Surfacing
	Road Marking		Path
	No Stopping		Landscaping
	Edge of Seal		Grass
	Proposed Tree		Pressed Concrete
	Tactile Pavers		

