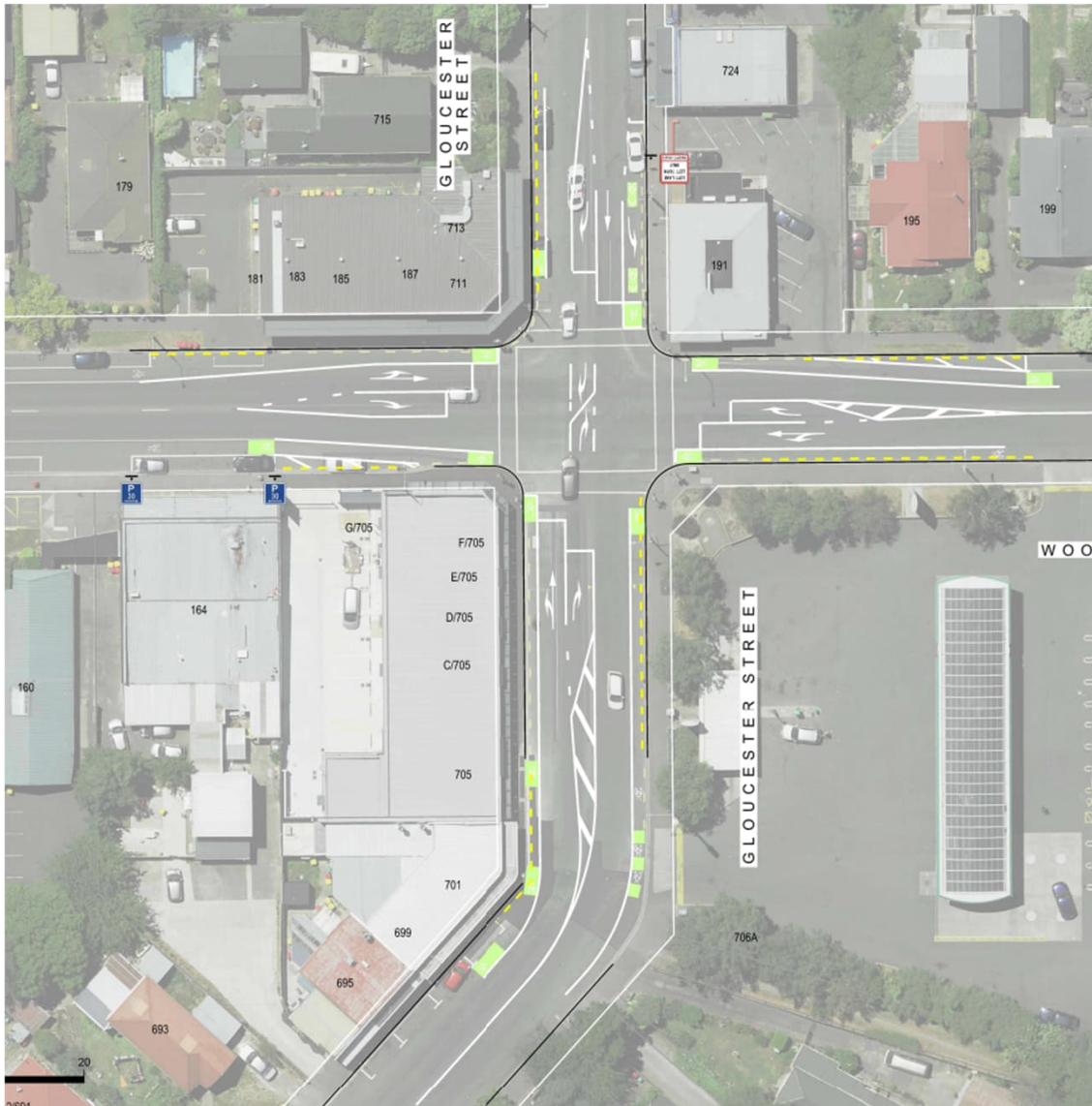




# Spokes Canterbury

Woodham Road / Gloucester Street  
Intersection Improvements  
Oct 2023

Anne Scott, Spokes Submissions Coordinator



## Woodham Road, Gloucester Street Intersection

The intersection will be safer for pedestrians and cyclists by including:

- Marked cycle lanes
- Stop boxes in front of traffic
- Clearer lanes for vehicles
- Only one lane going straight through on Woodham Road

# Safety Concerns Remain



The corner outside T Bakery remains a danger.

- Speed is an issue on a blind corner
- Pedestrians crossing the road to T Bakery distract drivers
- Green paint will not stop vehicles cutting the corner
- Flexi-Posts would make the corner safer for cyclists



## But other intersection are worse

- This is a busy corner close to Whītau School
- The proposed changes will significantly improve safety for cyclists and pedestrians.
- Please support this proposal.

Thank you for the opportunity to speak

Gloucester Street – Avonside Drive - Retreat Road should be next priority