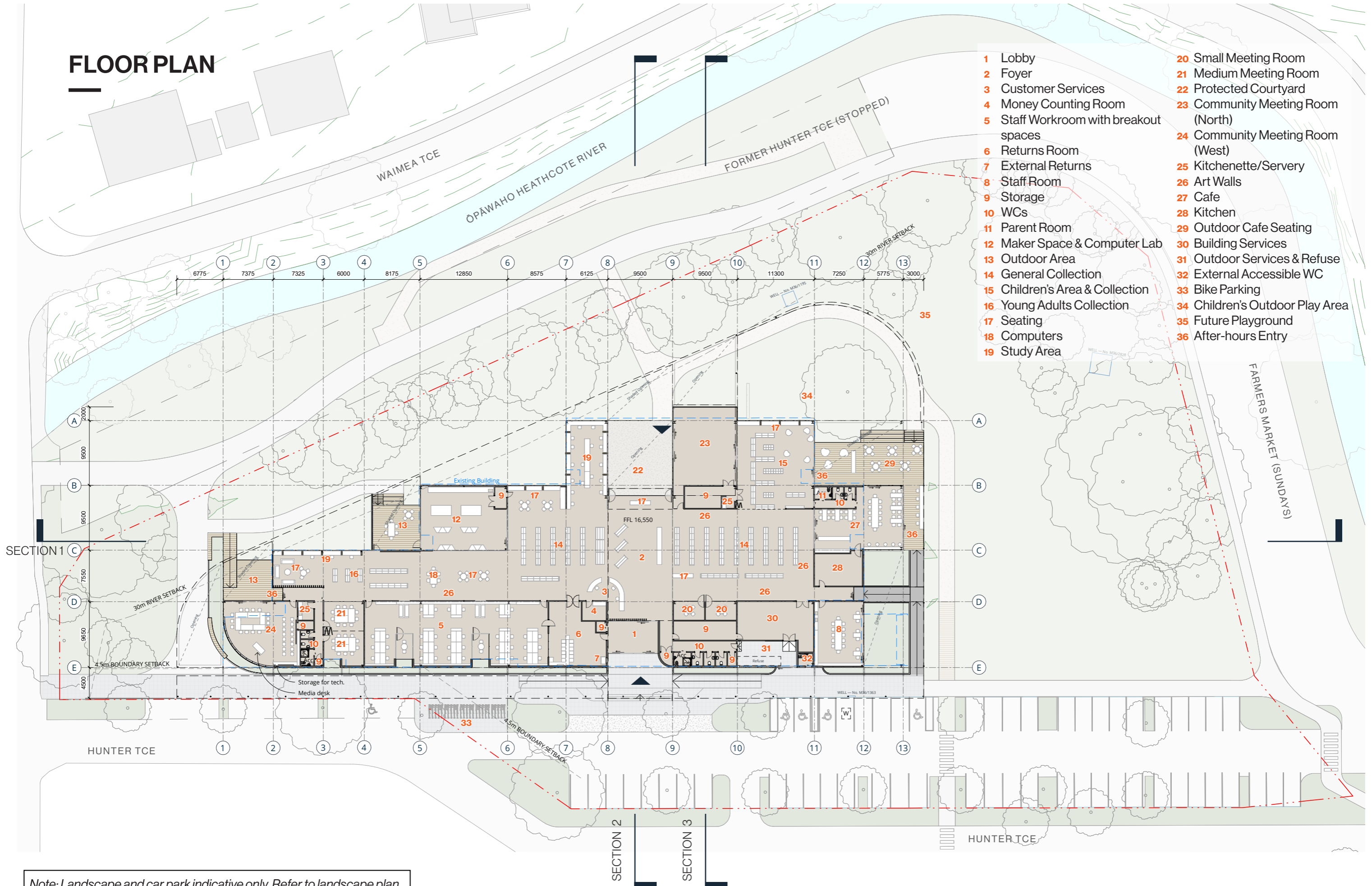


FLOOR PLAN

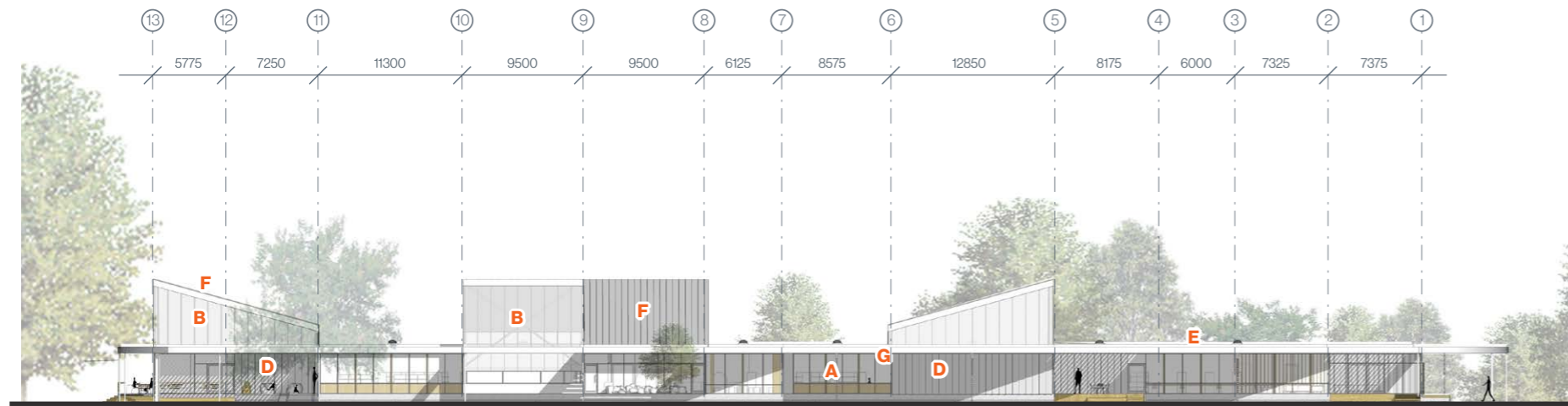


- 1 Lobby
- 2 Foyer
- 3 Customer Services
- 4 Money Counting Room
- 5 Staff Workroom with breakout spaces
- 6 Returns Room
- 7 External Returns
- 8 Staff Room
- 9 Storage
- 10 WCs
- 11 Parent Room
- 12 Maker Space & Computer Lab
- 13 Outdoor Area
- 14 General Collection
- 15 Children's Area & Collection
- 16 Young Adults Collection
- 17 Seating
- 18 Computers
- 19 Study Area
- 20 Small Meeting Room
- 21 Medium Meeting Room
- 22 Protected Courtyard
- 23 Community Meeting Room (North)
- 24 Community Meeting Room (West)
- 25 Kitchenette/Servery
- 26 Art Walls
- 27 Cafe
- 28 Kitchen
- 29 Outdoor Cafe Seating
- 30 Building Services
- 31 Outdoor Services & Refuse
- 32 External Accessible WC
- 33 Bike Parking
- 34 Children's Outdoor Play Area
- 35 Future Playground
- 36 After-hours Entry

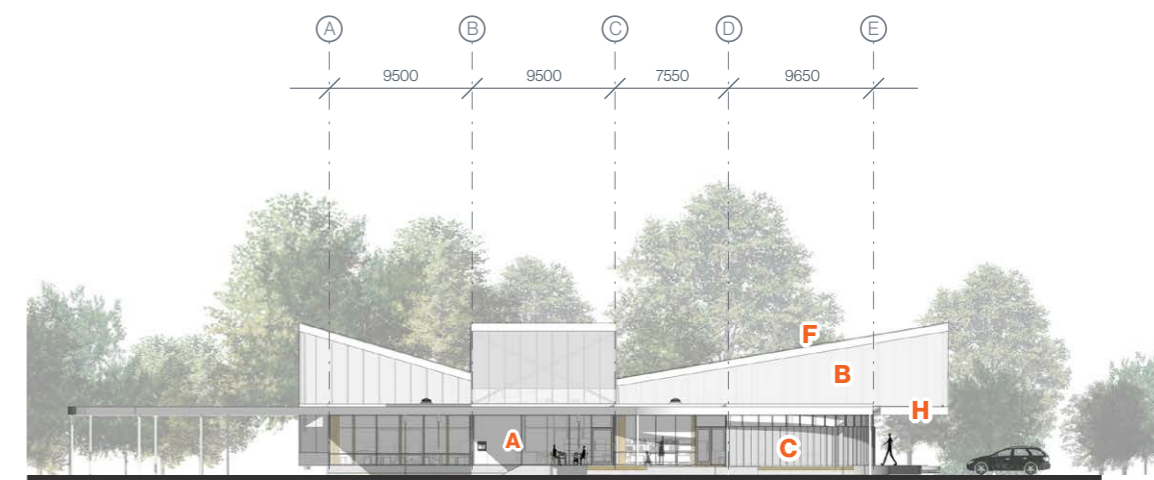
Note: Landscape and car park indicative only. Refer to landscape plan.



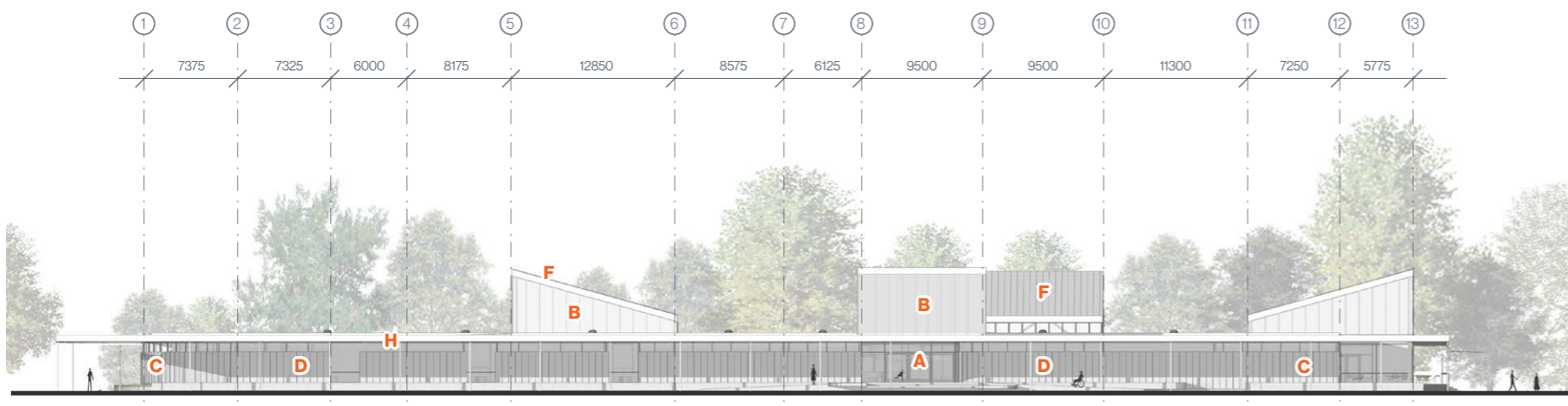
ELEVATIONS



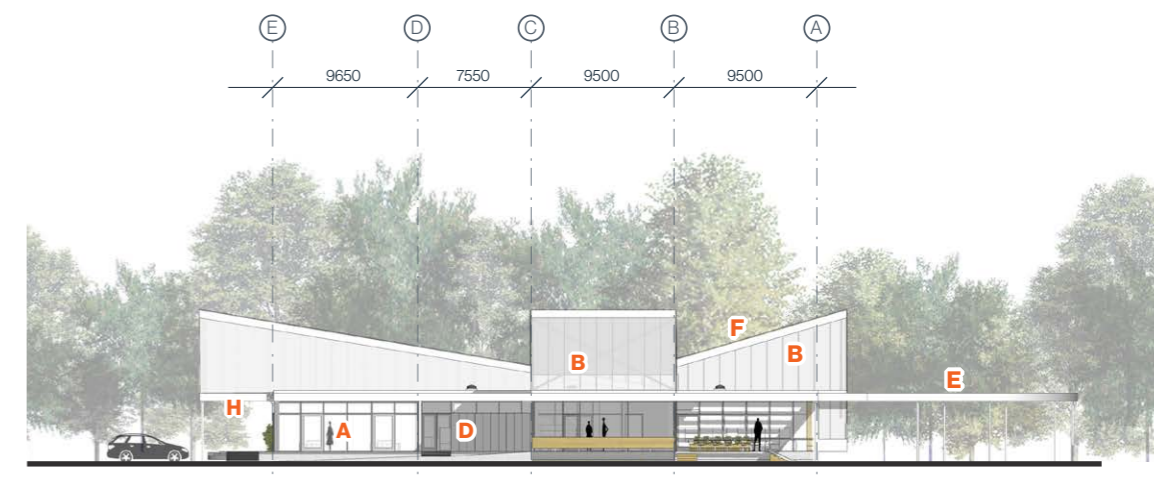
NORTH ELEVATION



WEST ELEVATION



SOUTH ELEVATION



EAST ELEVATION

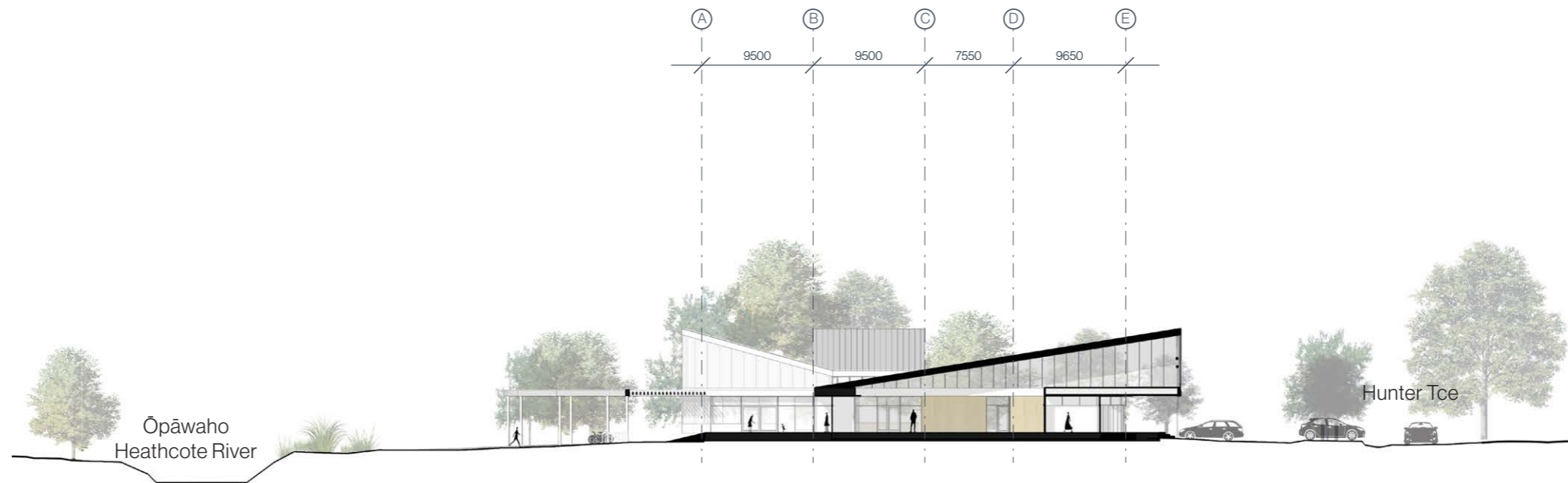
- A** Commercial aluminium joinery with double glazing, select anodized finish
- B** Translucent multicell polycarbonate panel facade system
- C** Panelised perforated aluminium screens over glazing
- D** Panelised aluminium rain-screen over fibre cement cladding

- E** Membrane warm roof system, with openings and aluminium louvre systems
- F** Metal tray roofing, select zinc finish
- G** Sheet metal soffits, mirror finish
- H** Covered canopy with aluminium louvre system and translucent roofing

SITE SECTIONS

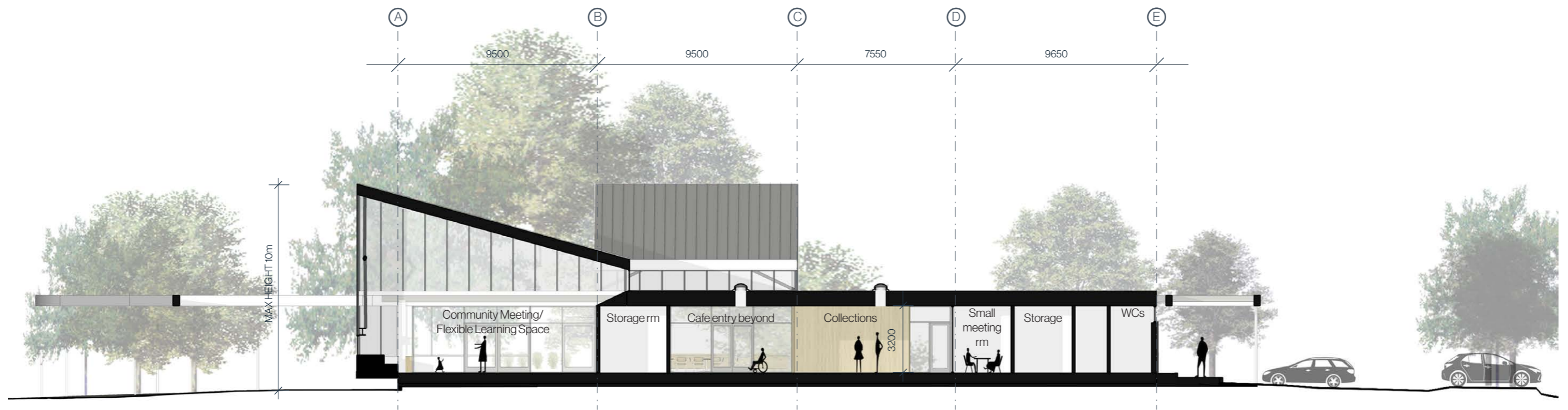
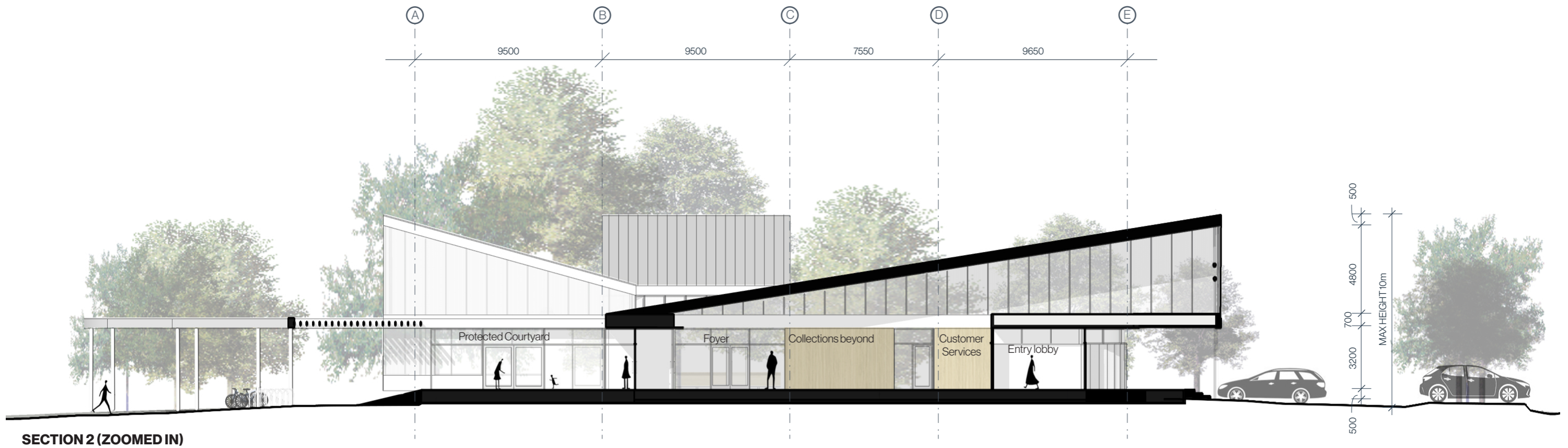


SECTION 1



SECTION 2

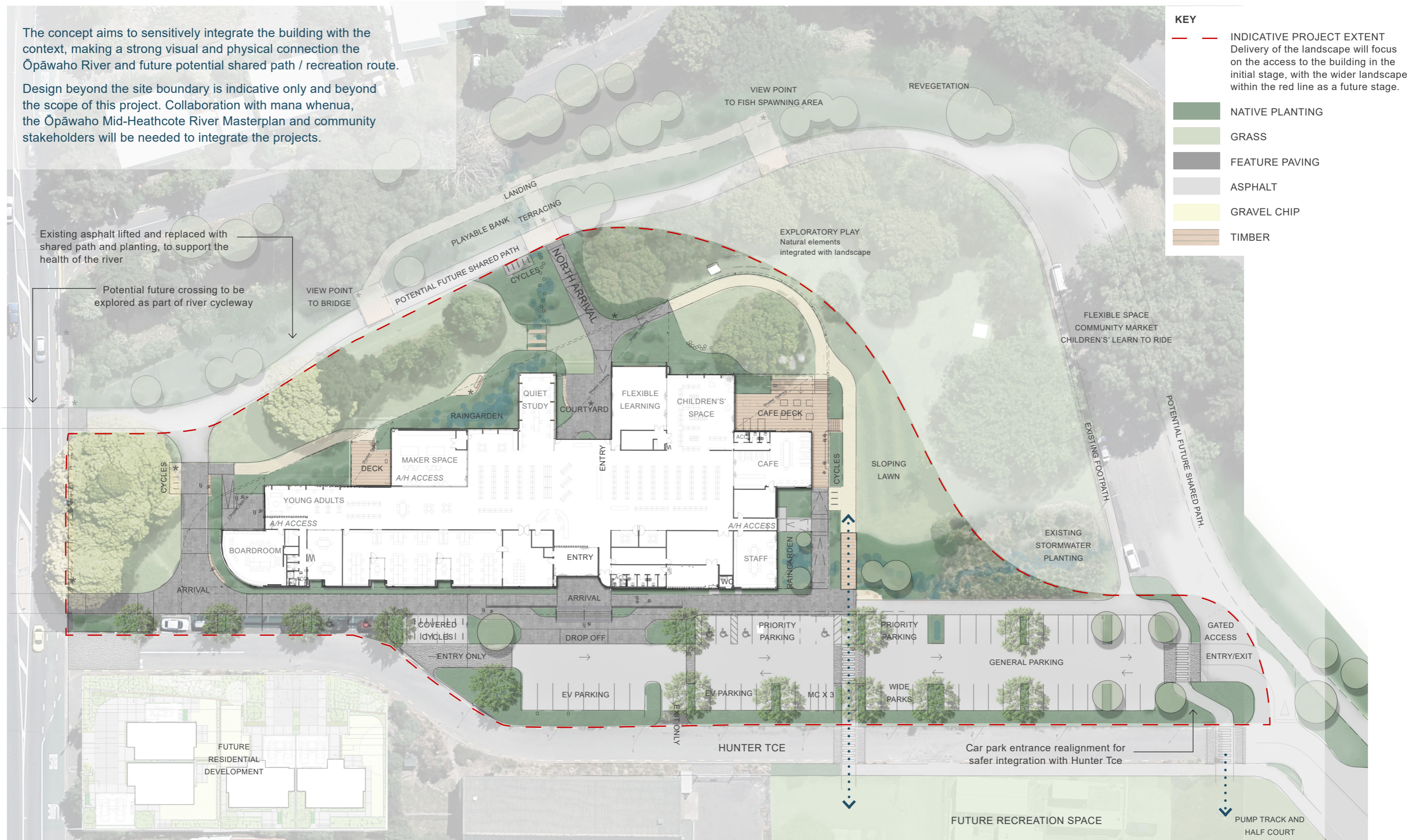
SECTIONS



CONCEPT PLAN

The concept aims to sensitively integrate the building with the context, making a strong visual and physical connection the Ōpāwaho River and future potential shared path / recreation route.

Design beyond the site boundary is indicative only and beyond the scope of this project. Collaboration with mana whenua, the Ōpāwaho Mid-Heathcote River Masterplan and community stakeholders will be needed to integrate the projects.



KEY

- INDICATIVE PROJECT EXTENT
Delivery of the landscape will focus on the access to the building in the initial stage, with the wider landscape within the red line as a future stage.
- NATIVE PLANTING
- GRASS
- FEATURE PAVING
- ASPHALT
- GRAVEL CHIP
- TIMBER

