

Ōtūkaikino Stormwater Management Plan



Council

Wednesday 21 June 2023

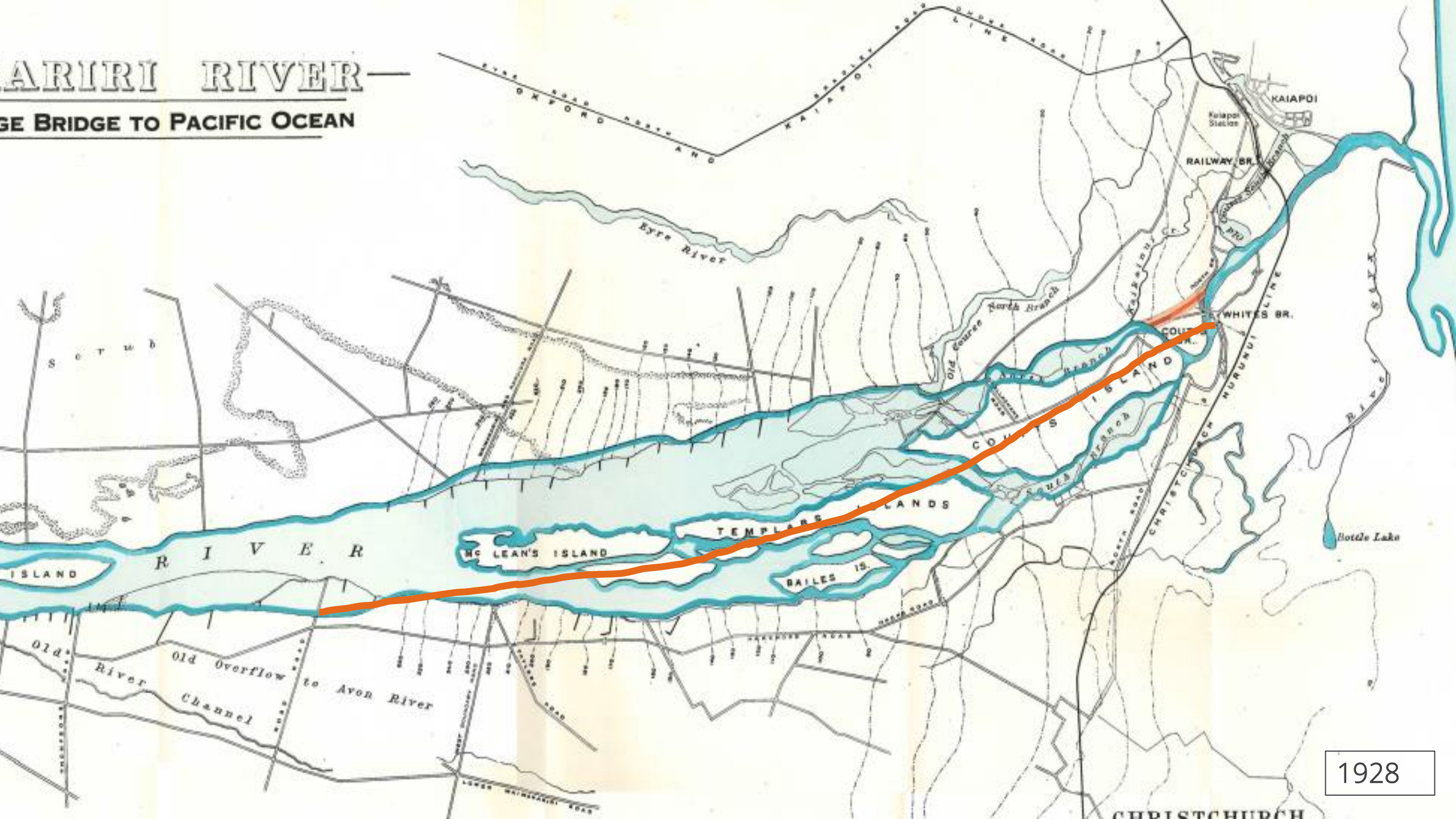
Item 6

Presentation material

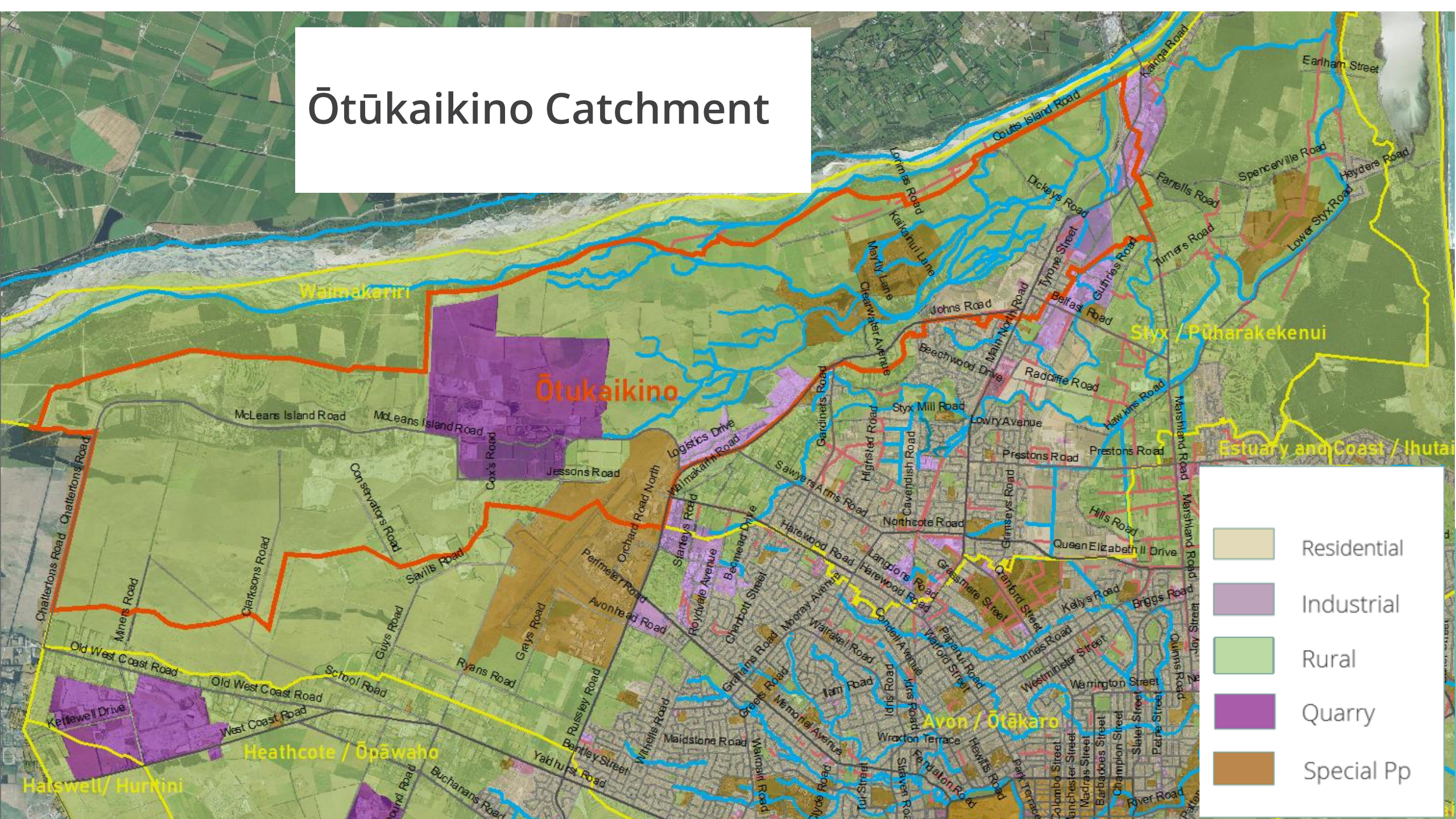
1. Ōtūkaikino Catchment
2. What is a stormwater management plan?
3. To be dealt with through a SMP
 - Contaminants
 - Flooding – not significant to this SMP
4. Proposed mitigations

ARIRI RIVER

GE BRIDGE TO PACIFIC OCEAN



Ōtūkaikino Catchment



CSNDC 2019
(the discharge consent)



Stormwater
Management Plans
(compliance)



1. Plan to build treatment basins proposed to the consent hearing.
2. Set contaminant reduction targets.
3. Demonstrate how stormwater quality will get better over time
4. Meet specific flood control objectives (mostly re new development)
5. Rural areas excluded from SMPs

Implementation
Plan

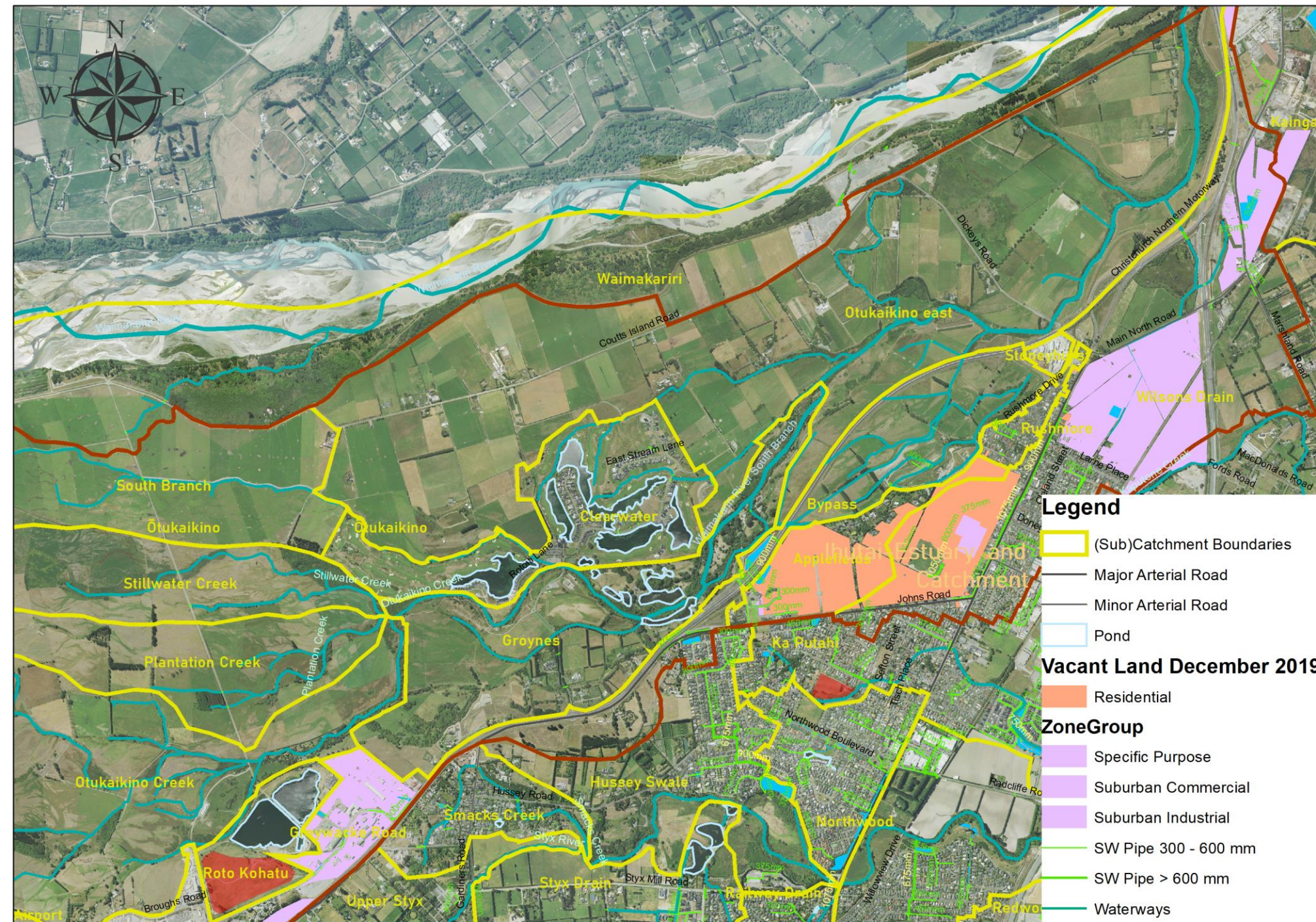


Long Term Plan
Activities funded

Key contaminants in this catchment

- Rural catchment.
 - TSS: stock in/near streams
 - TSS: stream bank erosion
- Urban catchment
 - Normal range of urban contaminants;
 - TSS: roads, construction
 - Copper: brake pad sources
 - Zinc: roofs and tyres

Planned Development Post 2019



Legend

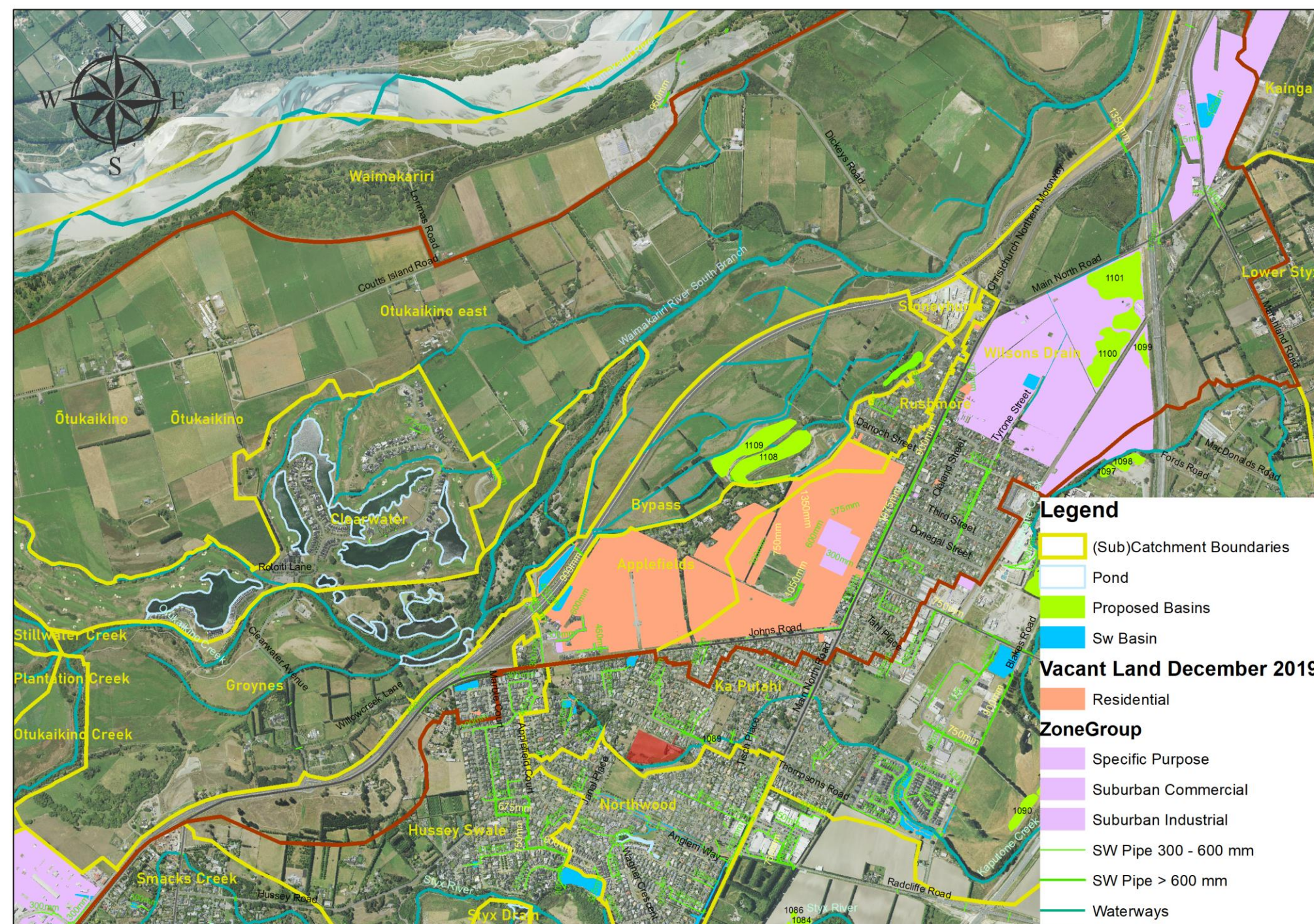
- (Sub)Catchment Boundaries
- Major Arterial Road
- Minor Arterial Road
- Pond

Vacant Land December 2019

- Residential

ZoneGroup

- Specific Purpose
- Suburban Commercial
- Suburban Industrial
- SW Pipe 300 - 600 mm
- SW Pipe > 600 mm
- Waterways



Development Mitigation - Proposed Treatment Basins

Legend

- (Sub)Catchment Boundaries
 - Pond
 - Proposed Basins
 - Sw Basin
- Vacant Land December 2019**
- Residential
- ZoneGroup**
- Specific Purpose
 - Suburban Commercial
 - Suburban Industrial
 - SW Pipe 300 - 600 mm
 - SW Pipe > 600 mm
 - Waterways
 - LANDSELLS - CCC



Other Council actions under the CSNDC

- Sediment Management Plan 2020 (Erosion and Sediment Control Plans for construction sites)
- Industrial site audits (visit, check compliance, agreed improvement plan)

End

Expectations for longer term improvements

- Old galv. roofs gradually replaced by ColorSteel™ reducing roof-sourced zinc
- Anticipate that low-copper brake pads will reduce copper over time
- Planting on hillsides and watercourses
- Remediate stormwater outfalls where there is erosion
- Long term brownfields redevelopment should incorporate passive treatment
- CCC could increase street sweeping after trials
- More effort needed for water quality to keep improving