

An aerial photograph of two tennis players in white shirts shaking hands on a tennis court. The court has white lines and a chain-link fence in the background. The image is darkened to serve as a background for the text.

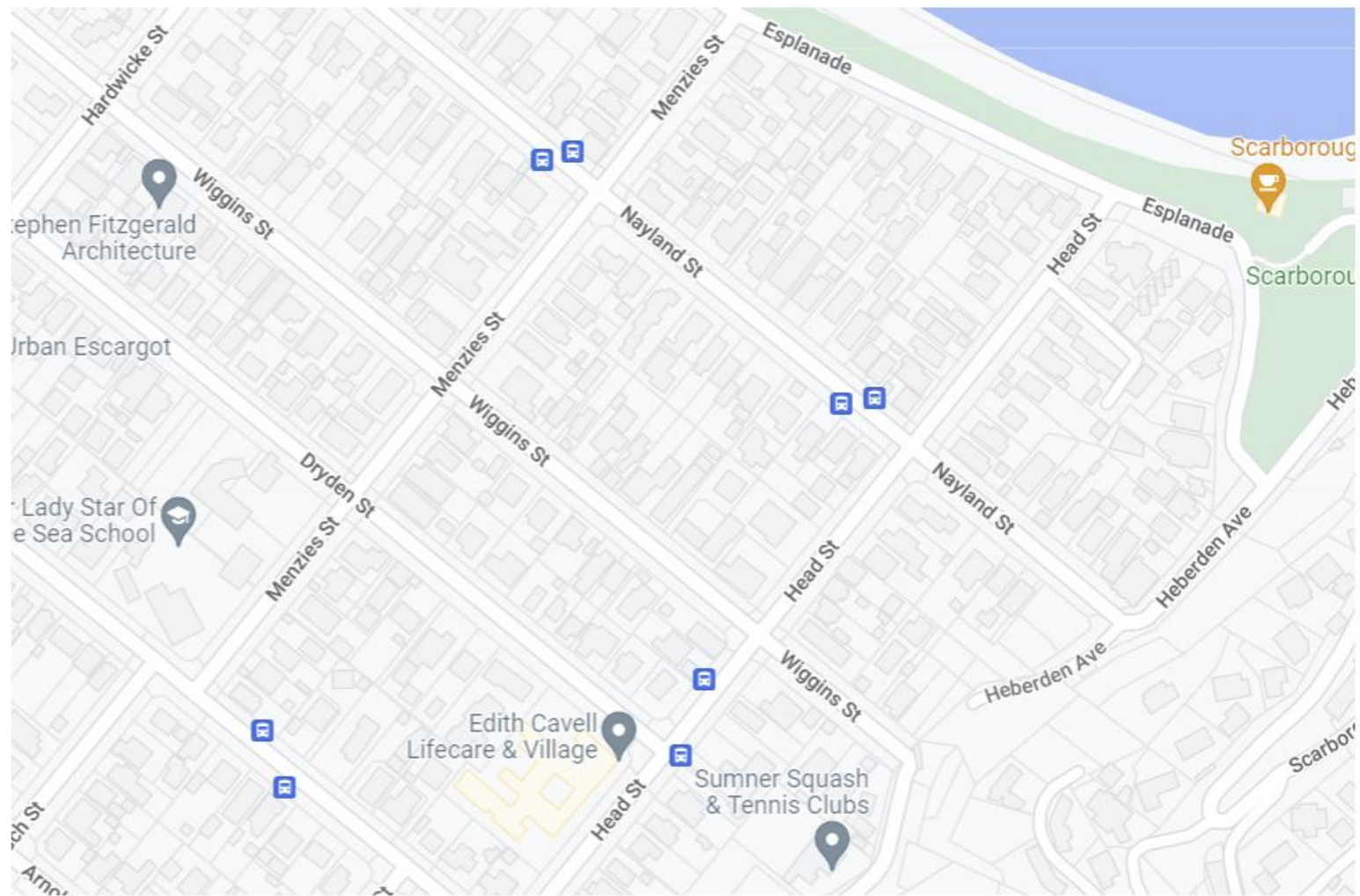
Red Zoned Land Proposal for Nayland / Wiggins Street

**Public Private Partnership for STSC Expansion & Red Zoned Land
Development**



Welcome to

Sumner Tennis Club





About Sumner Tennis & Squash Club

- Voted best club by Canterbury Tennis Association for 2021
- More adult members per court than any club in NZ
- 360 Adult members capped with 40 on waitlist



Tennis Canterbury Region
2020 - 2021
Club of the Year
**Sumner Tennis and
Squash Club Inc**

About Sumner Tennis & Squash Club

- Multisport club offering tennis, squash, table tennis, darts and basketball
- One of the lowest fee structures of any tennis and squash club in the country





One of the most affordable clubs in New Zealand

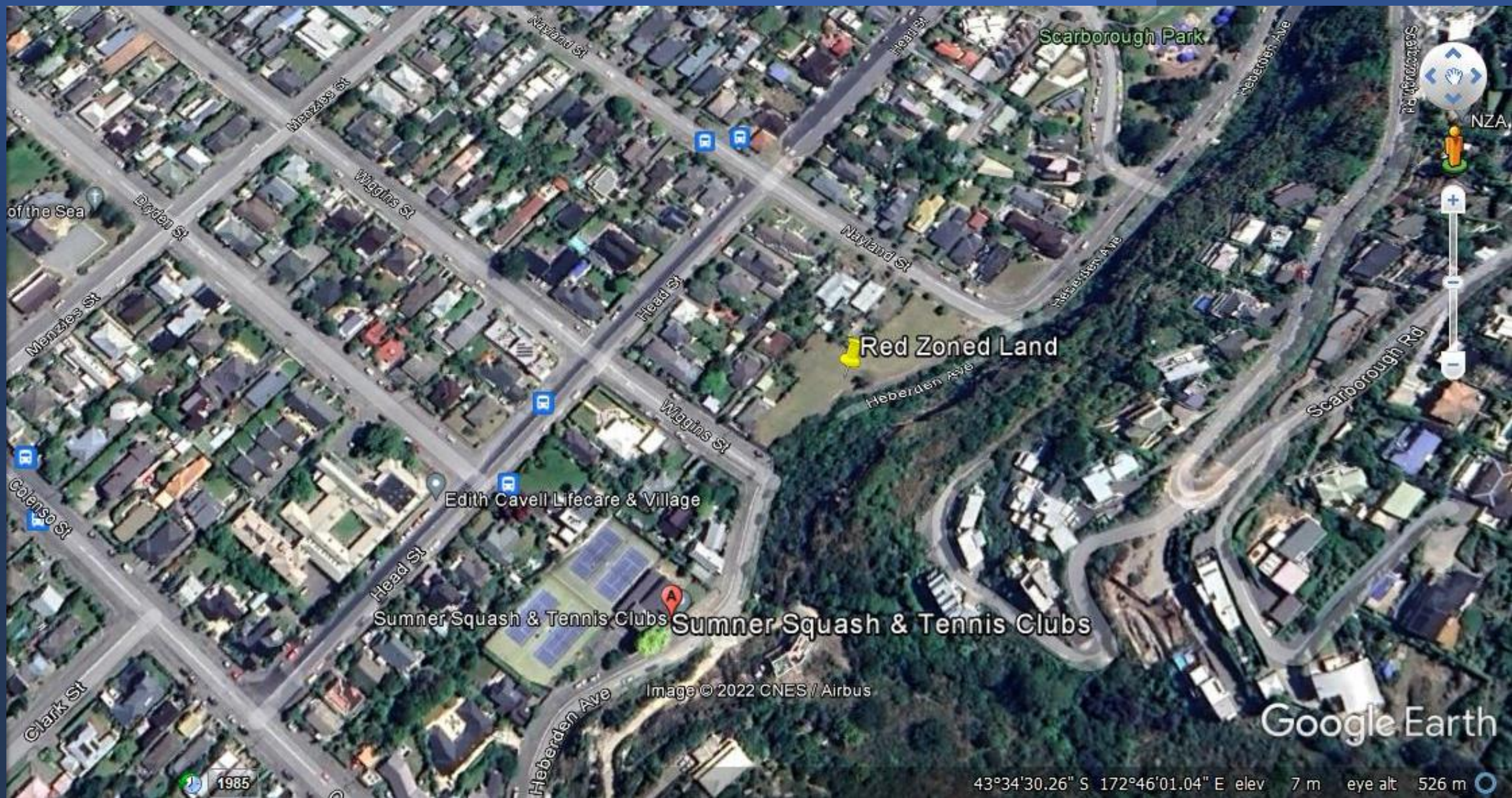
FAMILY	
Mount Pleasant	\$405
St Albans	\$450
SUMNER TENNIS AND SQUASH	\$450
Shirley	\$456
Riccarton	\$480
Hallswell	\$550
Redwood	\$670
Burnside	\$630
Burwood	\$650
South New Brighton	\$650
Bishopdale	\$720
Opawa	\$770
Waimairi	\$780
Elmwood	\$825
Cashmere (includes hotshots)	\$1,402
Average	\$659

OTHER TENNIS & SQUASH CLUBS	ADULT	COUPLE / FAMILY
Warkworth	\$242	\$460
SUMNER TENNIS AND SQUASH	\$245	\$450
Howick	\$329	\$658
Cambridge	\$350	\$700
Thorndon	\$360	\$720
Belmont	\$390	\$780
Khandallah	\$410	\$740
Hamilton	\$435	\$720
Browns Bay	\$440	\$779
Papakura	\$450	\$745
Henderson	\$499	\$998
Titirangi	\$504	\$1,008
Royal Oak	\$639	\$1,066
Eden Epsom	\$677	\$1,354
Remuera	\$840	\$1,320
AVERAGE	\$454	\$833



Sumner Tennis Court Usage Per Court Per Day

Month	Bookings	Average duration	Total time	Time Per Court Per Day
May	321	80 minutes	426 hours	3.4 hours
June	268	80 minutes	357 hours	3.0 hours
July	236	80 minutes	315 hours	2.5 hours
August	159	80 minutes	212 hours	1.7 hours
September	476	80 minutes	635 hours	5.3 hours
October	443	80 minutes	590 hours	4.8 hours
November	457	80 minutes	609 hours	5.1 hours
December	319	80 minutes	425 hours	3.4 hours
January	277	80 minutes	369 hours	3.1 hours
February	478	80 minutes	637 hours	5.7 hours
March	529	80 Minutes	705 hours	5.9 hours
April	344	80 Minutes	459 hours	3.8 hours



43°34'30.26" S 172°46'01.04" E elev 7 m eye alt 526 m

Sumner Tennis & Squash Club Proposal

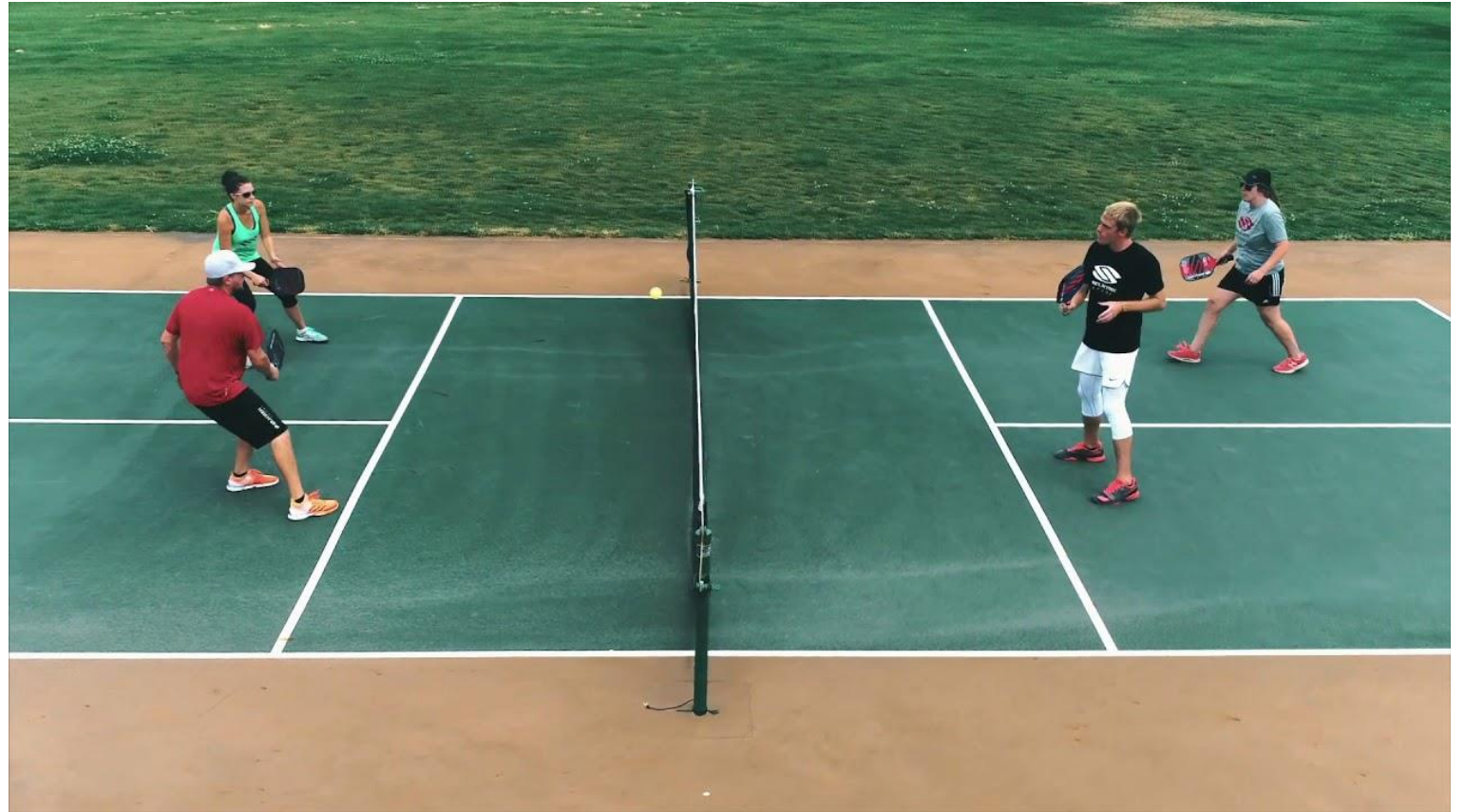
Develop the red zoned land near STSC into a public multi sport facility and park for all Christchurch residents to enjoy when visiting Sumner.

Provide public tennis, basketball and pickle ball courts close to Scarborough Park, widening the appeal of this well-loved corner of Christchurch.

Provide a cycle / walkway linking Nayland St to Heberden Ave

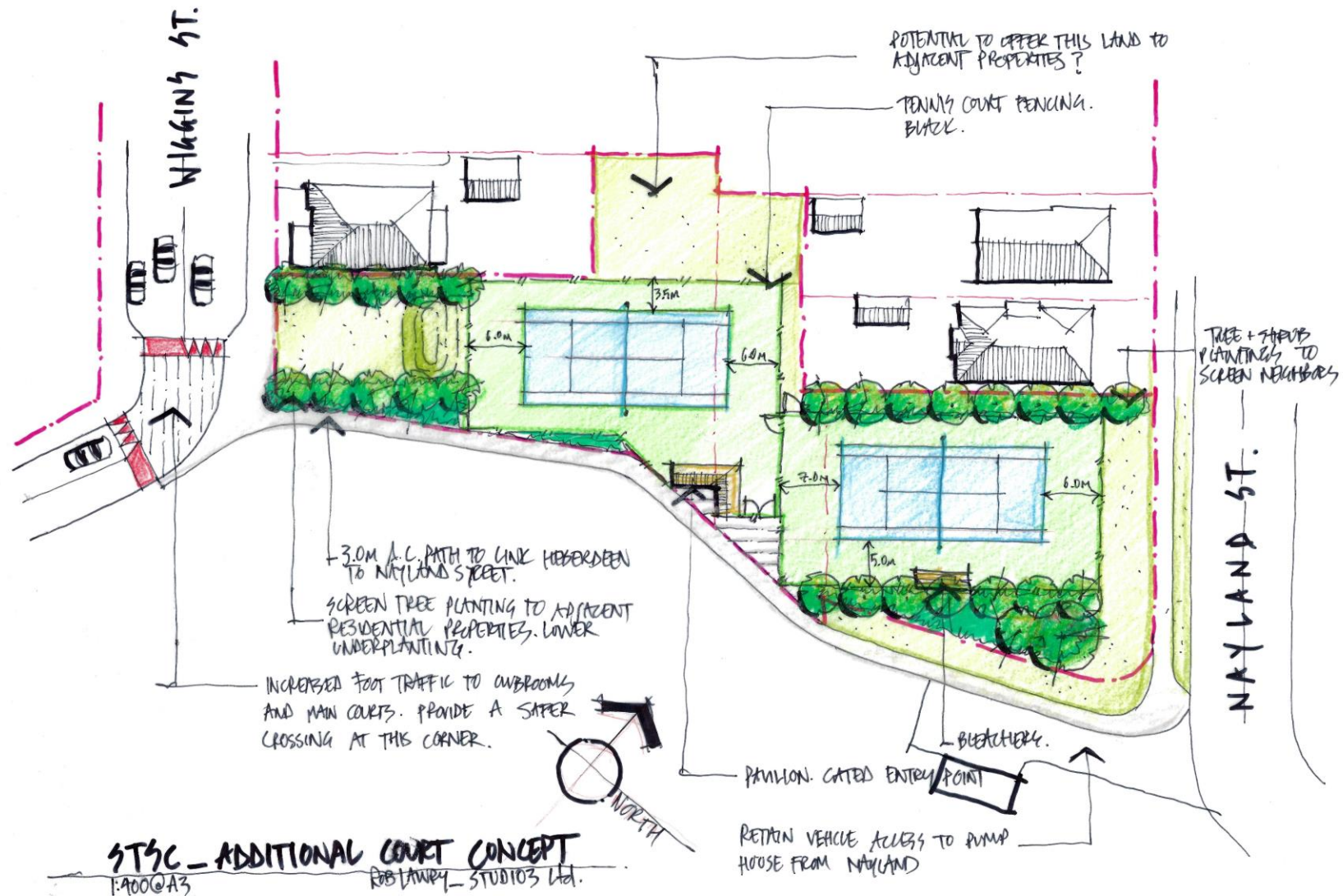
STSC would cover the cost of installing the two tennis courts and help fundraise for this project.

Pickleball – Fastest Growing Sport in USA



Basketball Court for Public Use





Key Points of Proposal

STSC would like to develop the red zoned land next to our club into a multi court, multi sport facility.

STSC is currently voted the number one club in Canterbury and has one of the lowest fee structures in the country. We have capped membership as we can not meet demand for our courts.

STSC would fund the development of the two tennis courts and help fundraise for the development as a whole.

We would like to ask tonight for the support of our proposal from the Waikura Linwood Central Heathcote Community Board.