

**Waipuna Halswell-Hornby-Riccarton Community  
Board Information Session/Workshop  
MINUTES ATTACHMENTS**

---

**Date:** Thursday 18 April 2024  
**Time:** 4 pm  
**Venue:** Rārākau: Riccarton Centre,  
199 Clarence Street, Christchurch

---

<b>TABLE OF CONTENTS NGĀ IHIRANGI</b>	<b>PAGE</b>
<b>2. Urban Planning for Hornby</b>	
A. Presentation - Urban Planning for Hornby.....	3

---



# Urban Planning In Hornby

Bruce Rendall, Head of City Growth and Property  
Sarah Oliver, City Planning Team Leader

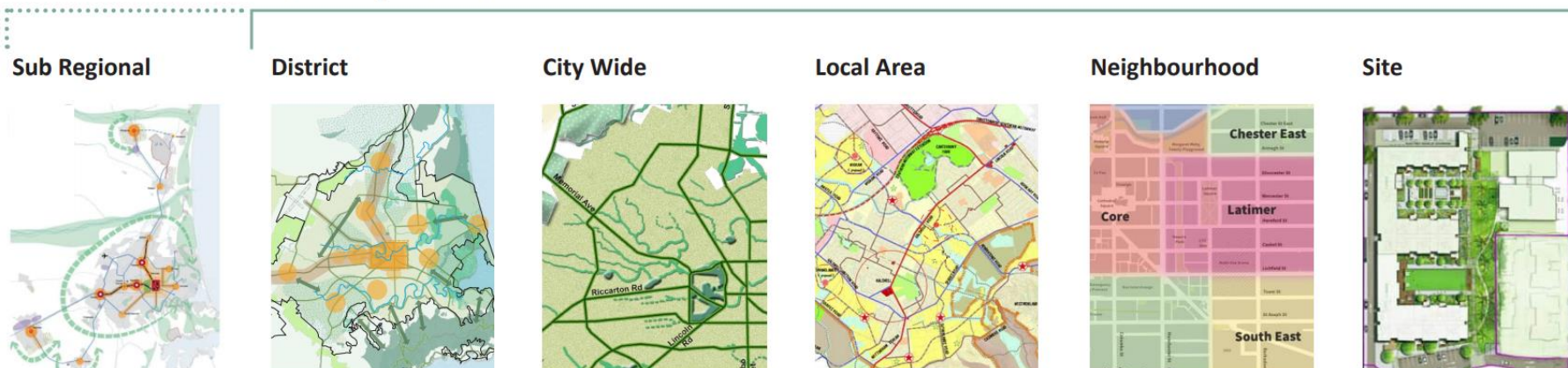
## Introduction

---

- Background: A Board Priority is the development and delivery of a Hornby Masterplan.
- Content:
  - Urban Planning Context
  - Current Programme
  - What are the Board's issues, concerns, questions, priorities?
  - Proposed way forward

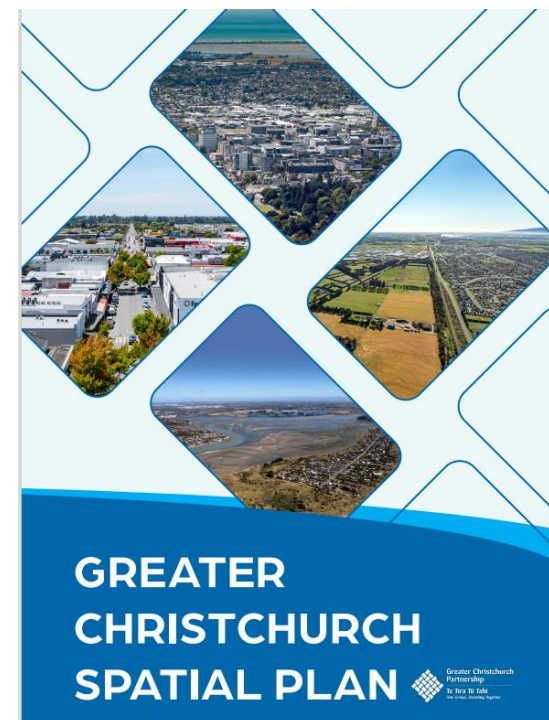
# Spatial Planning at different scales

## Delivery Scales



## Greater Christchurch Spatial Plan

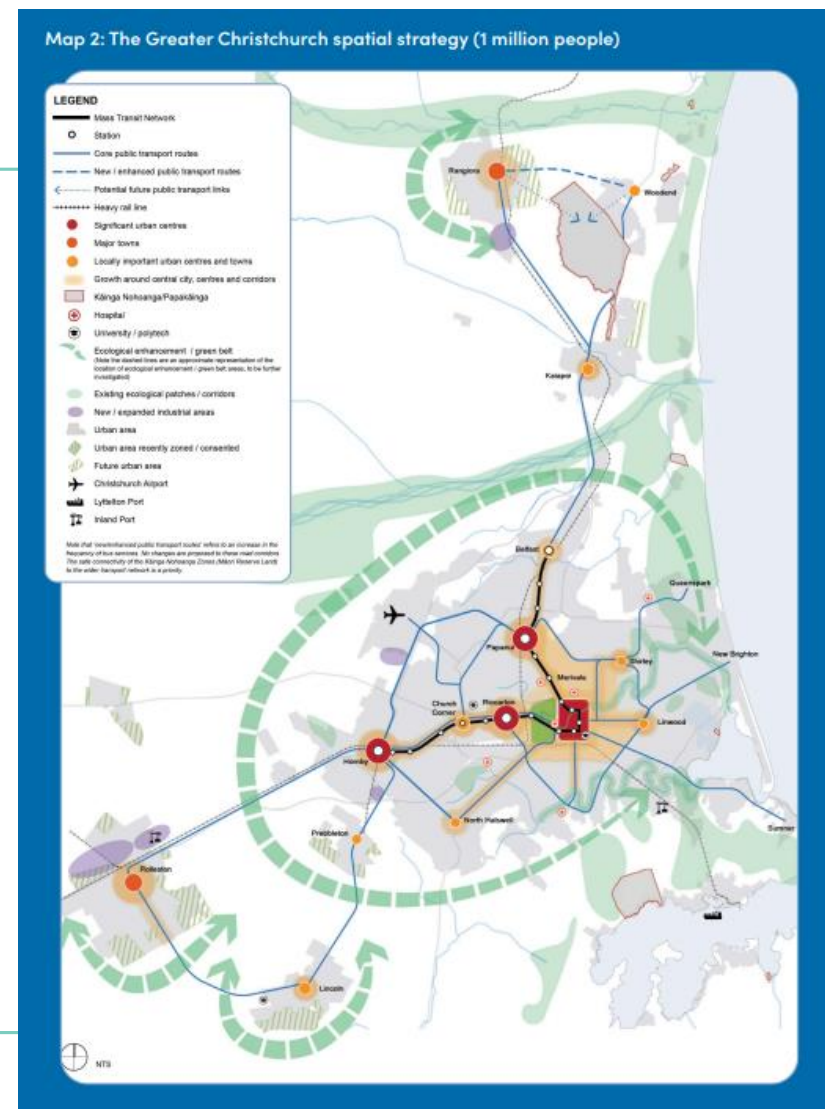
- Adopted 6 March 2024
- Spatial Strategy for a compact form
- Focus growth through targeted intensification in town centres and along public transport corridors
- Mass Rapid Transit – ‘city shaping’



# Greater Christchurch

- Riccarton corridor and Hornby –  
*Significant Urban Centres*  
*Priority Development Areas*

Priority Areas arising from Te Tiriti Partnership	Priority Development Areas		Priority Regeneration Area
Kāinga nohoanga on Māori Reserves and within urban areas	Rangiora Town Centre and surrounds		Eastern Christchurch area
	Mass rapid transit phase one corridor	Papanui	
		Central City	
		Riccarton	
	Hornby		
Rolleston Town Centre and surrounds			



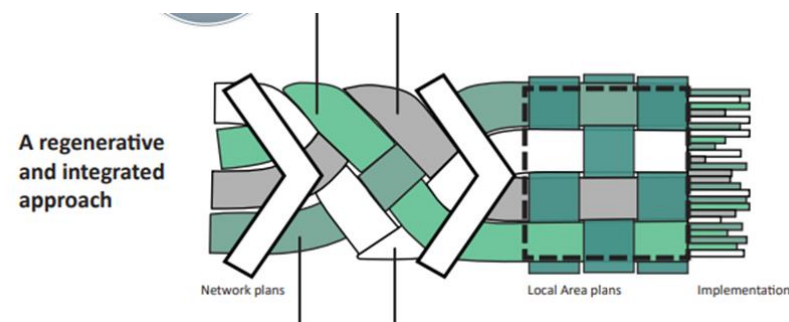


# Ōtautahi Christchurch Planning Programme

## Framework for Local Area Planning

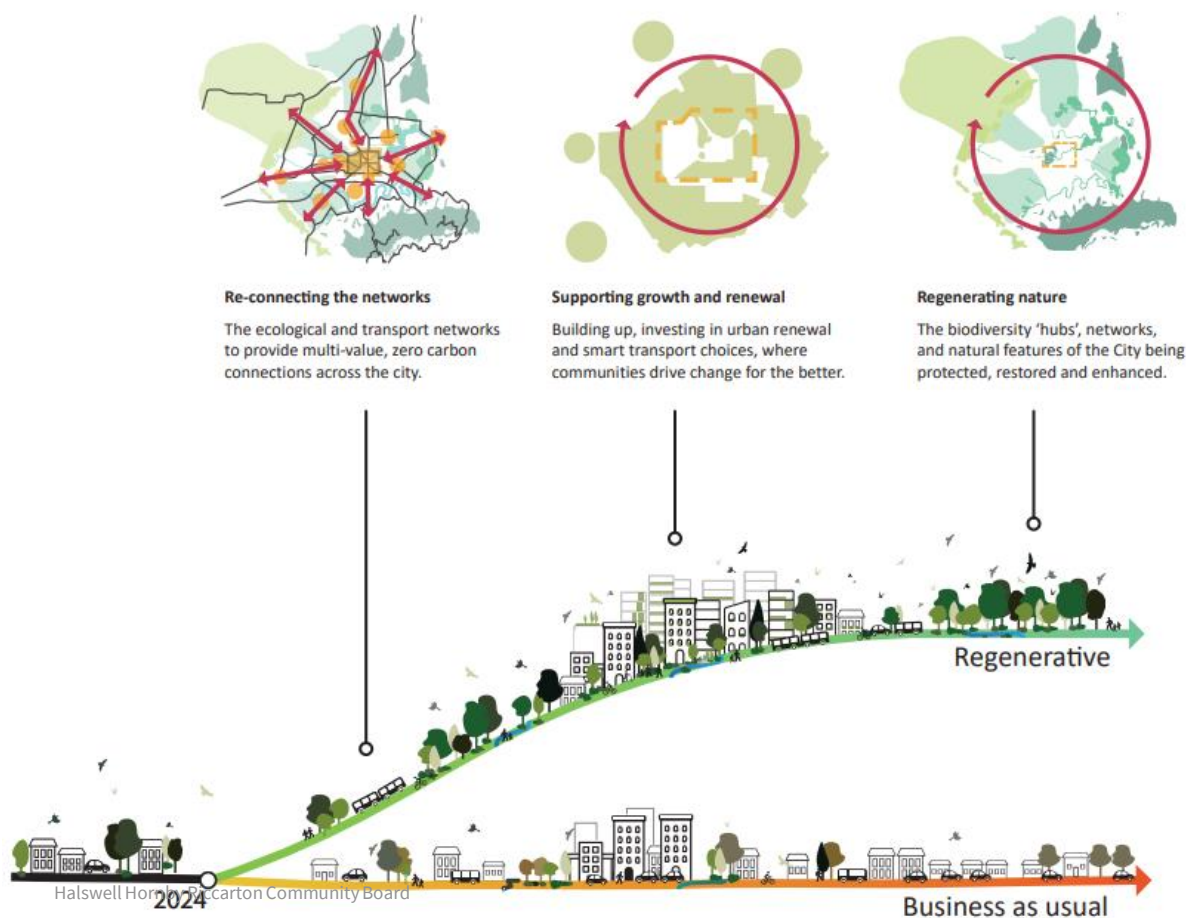
- Implements higher order direction
- Integration of plans/ strategies
- Partnership approach
- Opportunity to manage impacts of growth
- Priority areas – Riccarton corridor, Hornby

Achieving these four outcomes will be a particular focus for the ŌCPP.

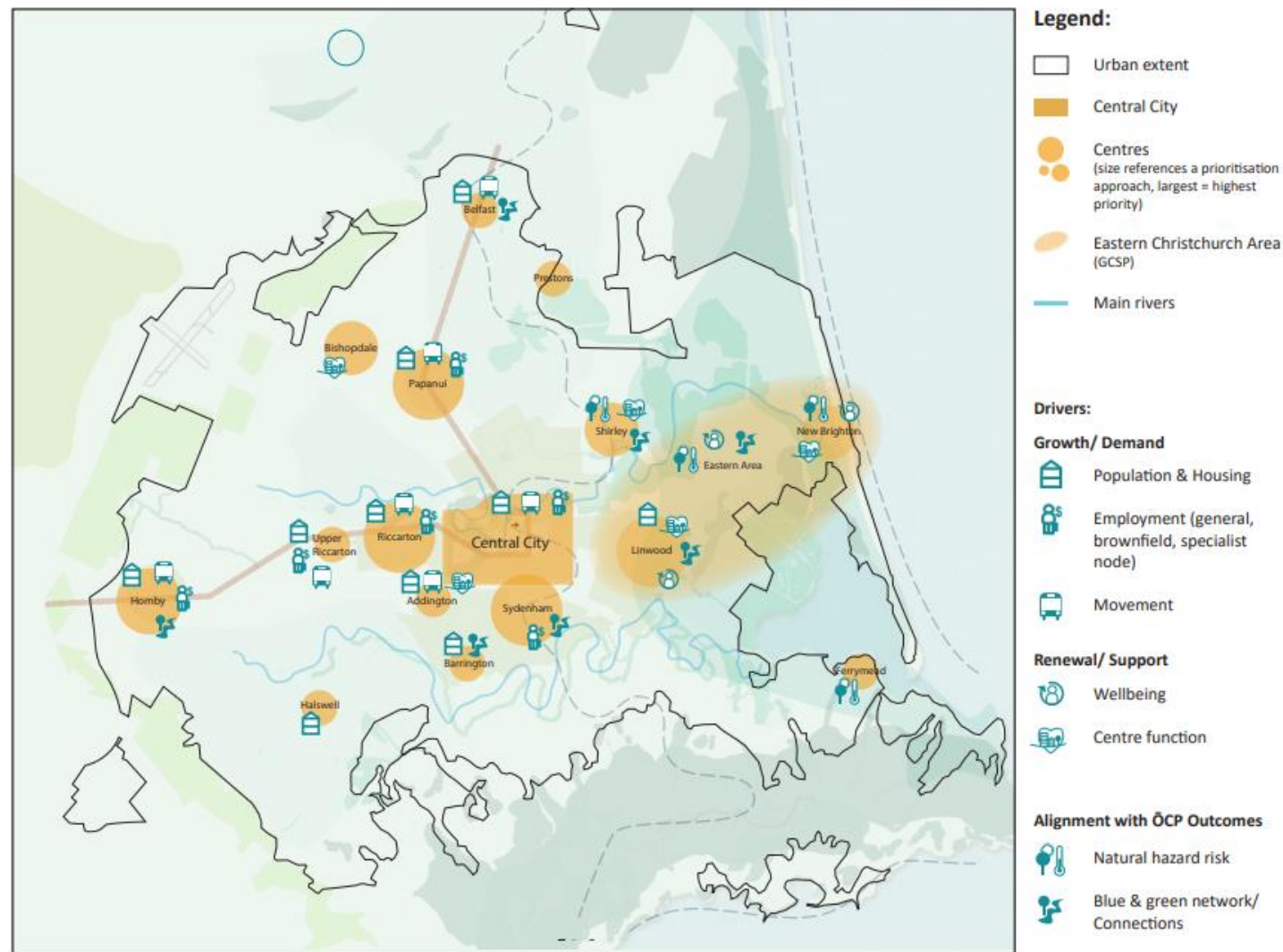




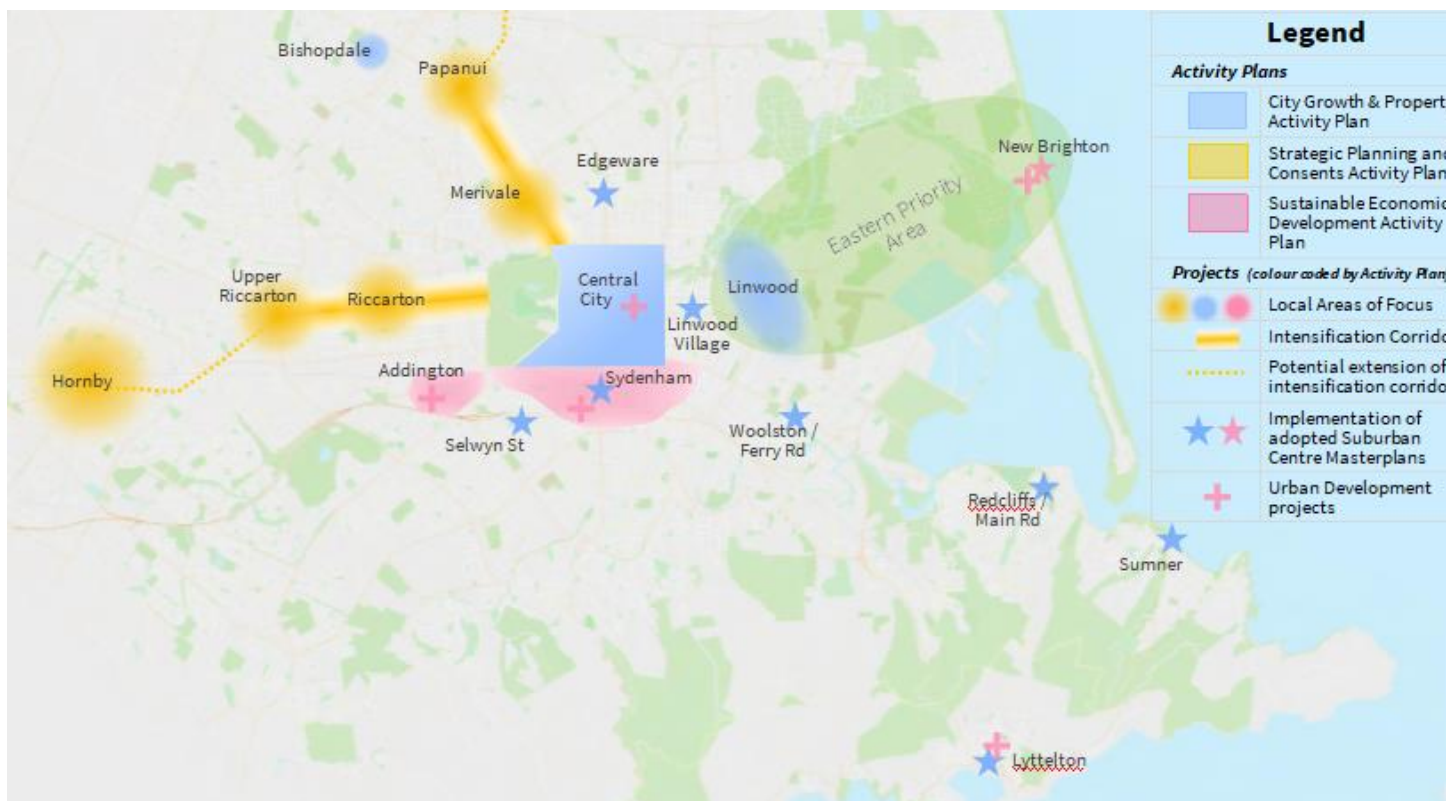
# An integrated and regenerative approach



## Focus for local area planning

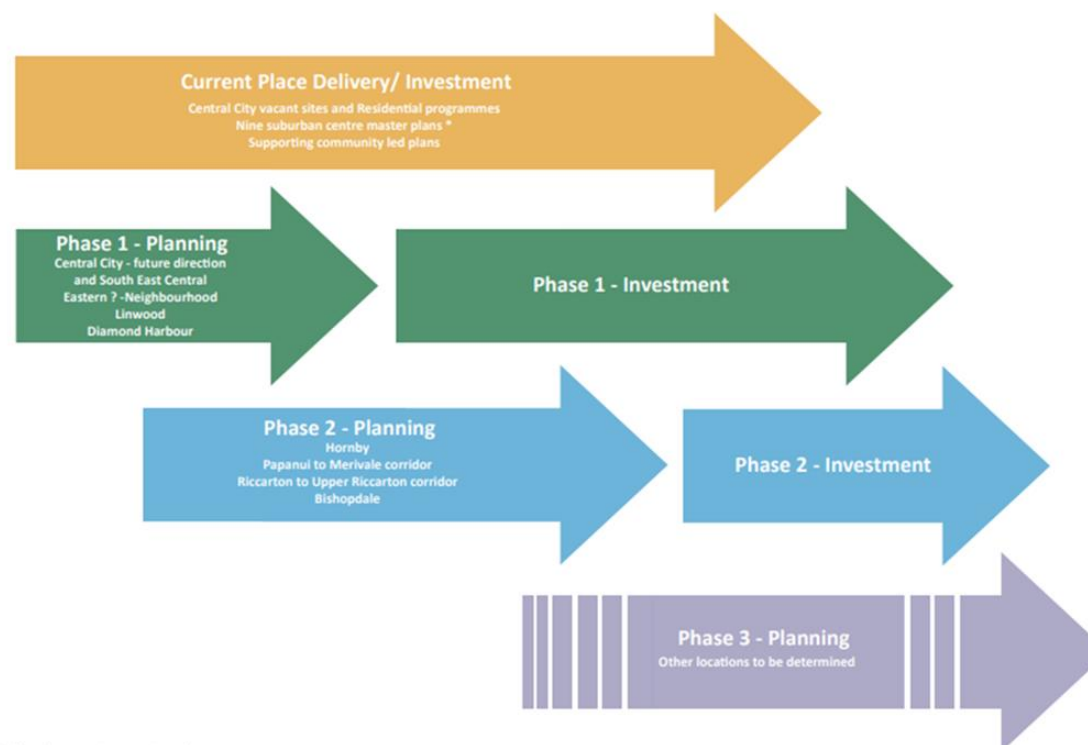


## Priority areas



# Phasing for local area planning

## Local Area Planning - Phasing



## Transport

- Draft GPS Land Transport
- Investment Proposal –

*We're looking to progress projects in the vicinity of Hornby on SH1 to improve economic growth and productivity as well as safety outcomes. Hornby experiences high delays and crash risks at key intersections, due to turning conflicts and pedestrian demands. The opportunity is to promote economic growth and productivity through reliable travel times and improved safety outcomes. ...*

### Proposed improvement activities

- State Highway Low Cost Low Risk programme
- Walking and cycling Low Cost Low Risk programme
- Public transport infrastructure Low Cost Low Risk programme
- 1 SH74 Lyttelton Commercial Vehicle Regional Safety Centre
- 2 SH1/73 Intersection improvement
- 3 SH1 Hornby Hub and corridor safety and optimisation
- 4 SH1 Hornby Access and Development PBC
- Greater Christchurch public transport improvements - phase 2





## Mass Rapid Transit Current Status and Next Steps

---

- Project in Investigation Phase
- The next phase is the Detailed Business Case (DBC). This will develop the design of the public transport service in more detail.
- Waka Kotahi currently working to make funding submissions. If funded, the DBC phase will start in the second half of 2024.
- Waka Kotahi are working on developing the potential project staging, identifying options regarding land use change, and gathering information for the DBC.

## Other Matters

---

- Resolution for the CE to provide budget and resource implications for commissioning a report with costed options and timeframes for providing walking and cycling connections between The Hub and Hornby Mega Centre
- Underway, but no decisions



# What are your issues / concerns / questions?



17 March 2022





17 March 2022

## Next steps

- Council – Endorsement of the Ōtautahi Christchurch Plan'
- Partnership approach to implementation of GCSP
- Establishment of Programme for ŌCPP
- Evidence / scoping
- Report back to Community Board





**Thank You**

