

Waitai
Coastal-Burwood-Linwood Community Board
MINUTES ATTACHMENTS

Date: Monday 8 April 2024
Time: 4.30 pm
Venue: Boardroom, Corner Beresford and Union Streets,
New Brighton

TABLE OF CONTENTS NGĀ IHIRANGI	PAGE
4.1. Public Forum - GreenLab	
A. The GreenLab Project Presentation	3
4.2. Public Forum - Renew Brighton	
A. Renew Brighton Emergency Response Presentation.....	10
4.3. Public Forum - East Shirley Cricket	
A. East Christchurch Shirley Cricket Club Presentation	25
8. Briefings	
A. Wastewater Treatment Plant Presentation	28
10. Proposed Linwood Park Changerooms	
A. Linwood Park pavilion and toilet renewal presentation	47

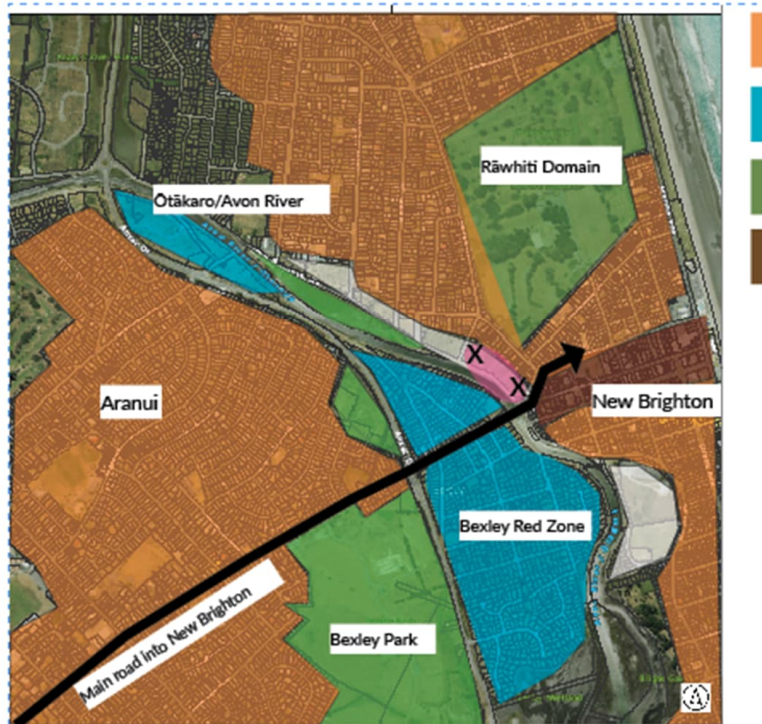
The Green Lab Mobile Workshop

Ecological Residency



The Green Lab Mobile Workshop

Ecological Residency



Ihutai Estuary of the Heathcote and Avon Rivers

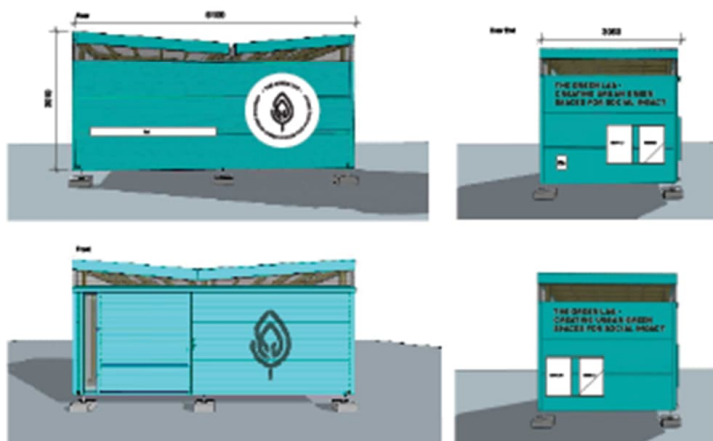
Vision

To introduce and educate the community about the ecology and biodiversity of the local environment, our impact, its importance and its future.



The Green Lab: Portable Workshop
Proposed Location

00 100m



How

By moving The Lab to the Gateway into New Brighton, and introducing, at street level, The Green Lab to the community

- Supplying a portable workshop space
- All accessible site, for everyone to be able to enjoy and learn from
- Creating a community meeting place with seating and shade
- Landscaping with local community to increase local biodiversity
- Working in partnership with local organisations
- Providing educational workshops
- Research and development in the area
- Signage regarding the surrounding environment and how we can make a beneficial impact

Workshops

- Drainage and flood management
- Building materials: Hard & soft timbers, treated & untreated timbers, native & exotic woods
- Insects in the surrounding area and insect hotels
- Making trap boxes to encourage a predator free New Zealand
- Backyard resilience design
- Making planter boxes using reclaimed materials

Landscaping

- Greening the area
- Native plants and trees
- Accessible path way
- Seating and shade
- Bird watching Platform

Research and Development

- Invertebrate population declining, and how to increase it
- Mycology (mushrooms/fungi) growth in the local area
- Human impact on nature: eg: Plastic weed matting vs wood chips vs flax weaved matts
- Microscope and equipment would be required
- Flood awareness
- Harnessing wind power on a small scale at coastal and estuary points

Working in Partnership with:

- The residents of greater New Brighton and Aranui- Community day and letter drop
- Christchurch City Park Rangers - Current
- Eastern Community Sport and Recreation Inc - Current, Office and greening at Avon Hub
- Canterbury University -Current
- Lincoln University- Current
- Department of Correction - Current
- Tētēkura Transition Education Centre- Current
- SkillWise-Current
- Kahukura Rongoa Maori Charitable Trust-Current
- Avon Ōtākaro Network - have support
- The Brighton Observatory of Environment and Economics - connecting
- Avon Heathcote Estuary Ihutai Trust
- New Brighton Community Gardens
- Renew Brighton
- Te Ngāi Tūāhuriri Rūnanga

The Green Lab Mobile Workshop

Ecological Residency



A

Pro:

Connection to Rāwhiti Domain
Better drive on access
More parking
Neighbors not as close
More higher ground for workshops
Mushrooms growing

Cons:

Not as visible
Further away from the central New Brighton

B

Pro:

Closer to central New Brighton
Higher visible when entering New Brighton
over Pages road bridge
Expected to get more cyclist walker from
city to sea bike path
More social surveillance
Future community site planned

Cons:

Less higher ground
Closer to neighbor
Less street parking



River outlook.
Create walking and bike connections- to the River to Rāwhiti
Domain to New Brighton
Build stronger social networks.
Education for sustainability and preparedness.

The Green Lab Mobile Workshop

Ecological Residency 

Ecological Residency_2024			Time line		
		COST			
Space Activator	24 h/p wk @ \$36	20736	September		
	*based on a 6 month initial project			Site works	
				Plantings for rain garden	
Mobile Workshop	moving costs from current site	2000	October	Start workshops	
	foundation for new site	2000		Design seating/ or stucture with community	
Wifi	mobile connection within container	420	November	Start building seating	
	*hotspot				
Resources & Materials	workshop materials	15000	December	Summer workshops	
	*printing/marketing/tools/stationery		January	Summer workshops	
			February	Summer workshops	
	TOTAL	\$40,156.00			



Why does the community need an emergency plan?



Prevent loss of life

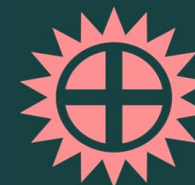
Align the Community's effort with the CCC Civil Defense strategy

Account for resources in the area and create a coordinated way to distribute resources

Ensure that every household has individual plan and resources available

Increase the risk awareness and educate community on how to be prepared

What hazards and risks does the plan cover?



Earthquakes



Heat wave



Flood



Storms



Fire



Tsunami



Toxic spill



Pandemic

Stakeholders & community



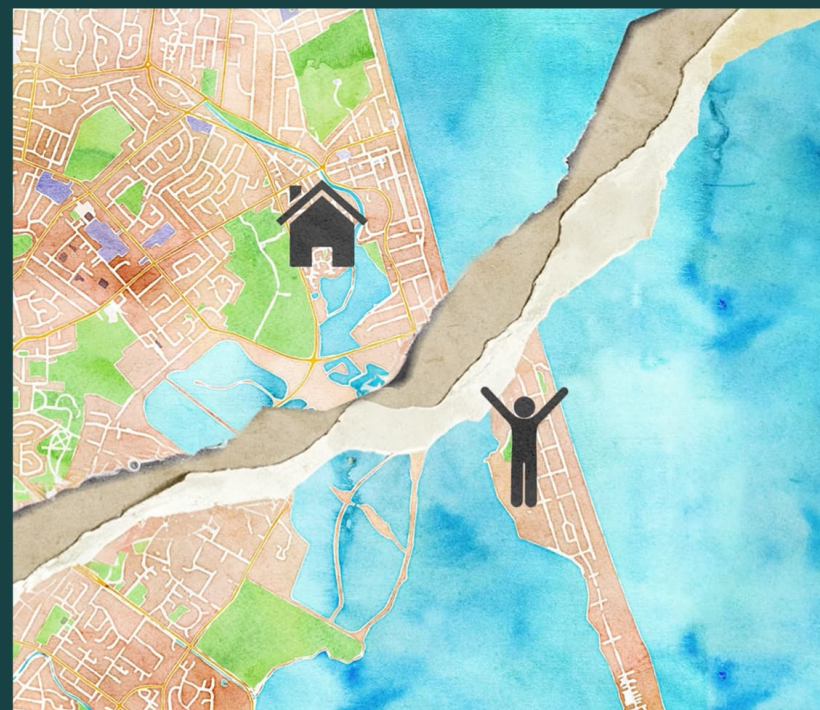
New Brighton, Southshore, South
New Brighton and Waimairi
beach resident associations

Renew Brighton

The Hubs

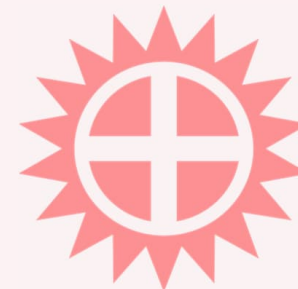
The CCC Civil Defense

The Community Board



What should I do?

- **Prepare your household emergency plan**
- **Know your neighbors**
- **Register to receive a local updates**
- **Know your closest Hub**
- **Know your exit route if need to evacuate**

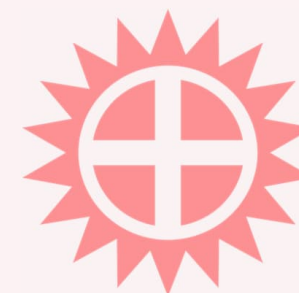




When will it be activated?

One of the stakeholders identifies the hazard

National or regional emergency declared





How it will be communicated?

Website:
www.emergencynewbrighton.org

Phone and email alerts

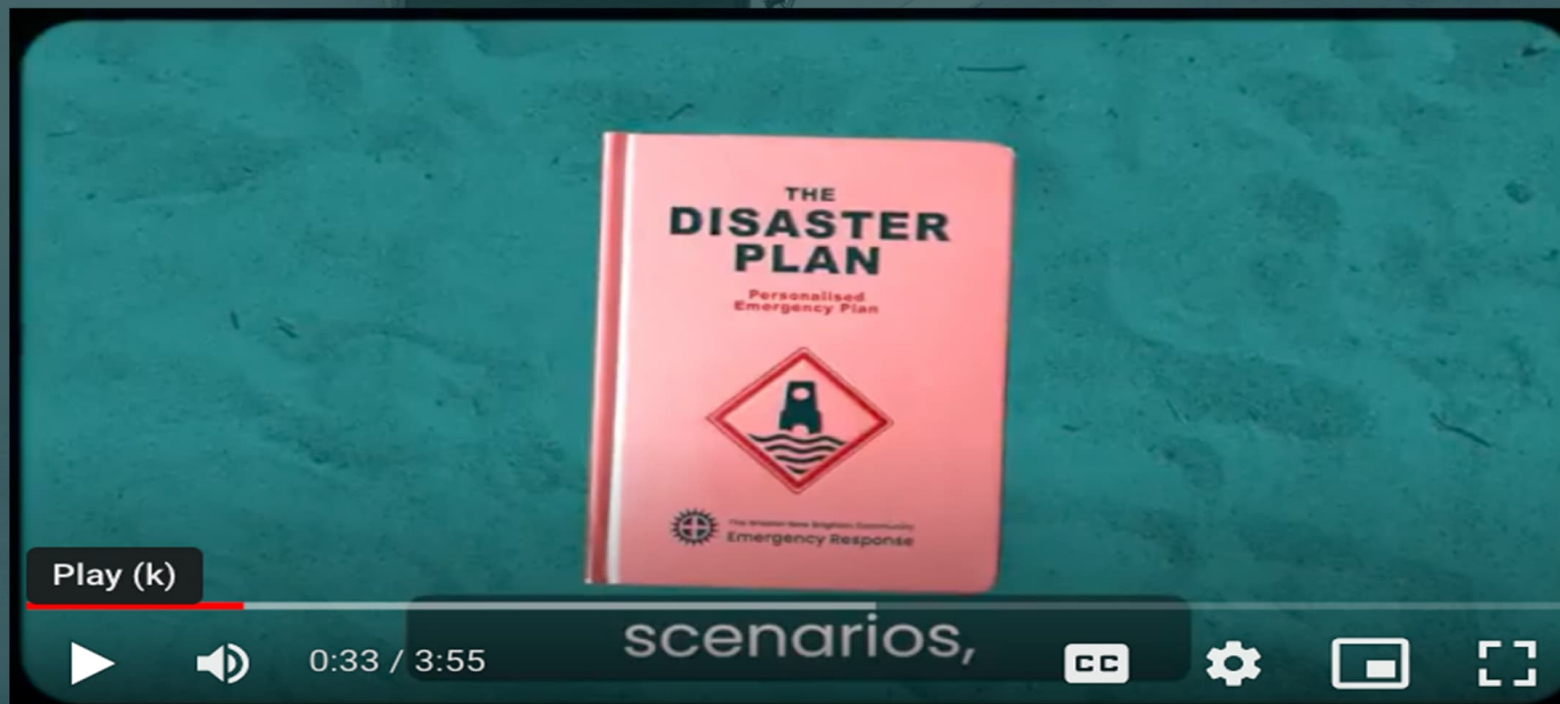
Local radio

Word of mouth (street hubs)



Video

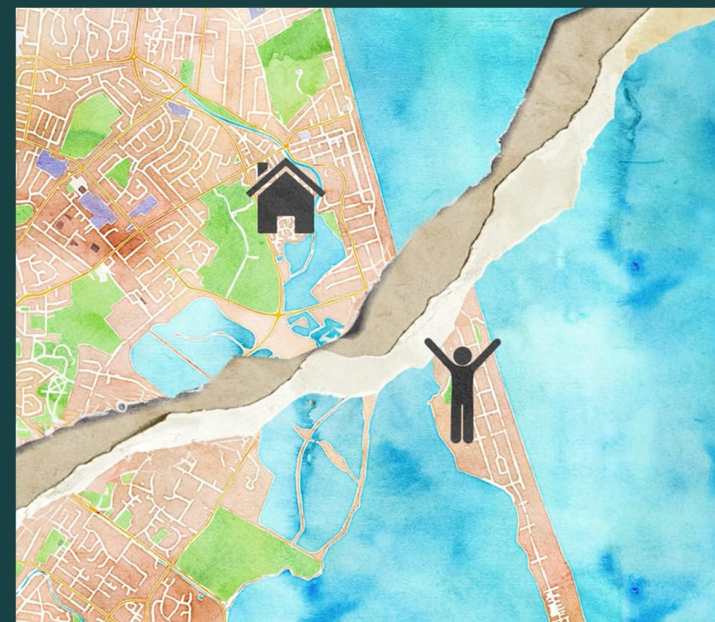
www.emergencynewbrighton.org



Community Hubs



1. Grace Vineyard; likely to be the first to open.
2. Union Church (backup for Grace)
3. The Bridge Hub
4. Other hubs may open if needed.

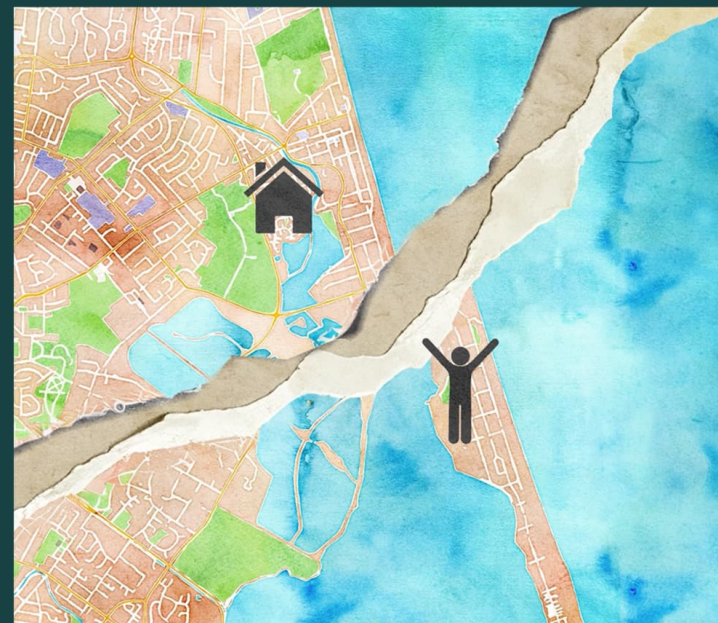


Community Hubs



The Community Hub is:

1. A meeting place for information sharing
2. You can donate resources or let the community know about your resources (water, food, medical, pet care, sleeping space, phone charging etc.)
3. You can access community resources.

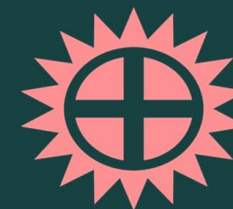


Community Hubs

www.emergencynewbrighton.org

Example

- 3 days of high heat and more expected
- Open Grace Vineyard Hub (perhaps The Bridge, Union Church)
- Actions and resources to support those impacted





Household plan



Is your Whānau
prepared for an
emergency?

[Download our planner and checklist](#)

Planner and Checklist - “Are you prepared for an emergency”

- Supplies you need at home and location
- What to take if you need to leave your home
- Your personal evacuation route
- Practice and update your plan every year (calendar)

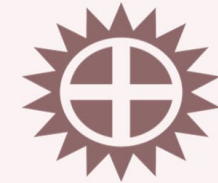


Planner and Checklist - “Are you prepared for an emergency”

- Meeting place, when Whānau scattered.
- Radio – what stations. Spare batteries
- Check take away bag, documents and important phone numbers
- Check your neighbors



Subscribe



www.emergencynewbrighton.org

Sign up

Subscribe to our mailing list to stay up to
date with important information

Sign up now



East Chch Shirley Cricket Club

Deputation to Coastal-Burwood-
Linwood Board

8 April 2024

Paul Cottam, Junior Convenor
Tim Grocott, Club President

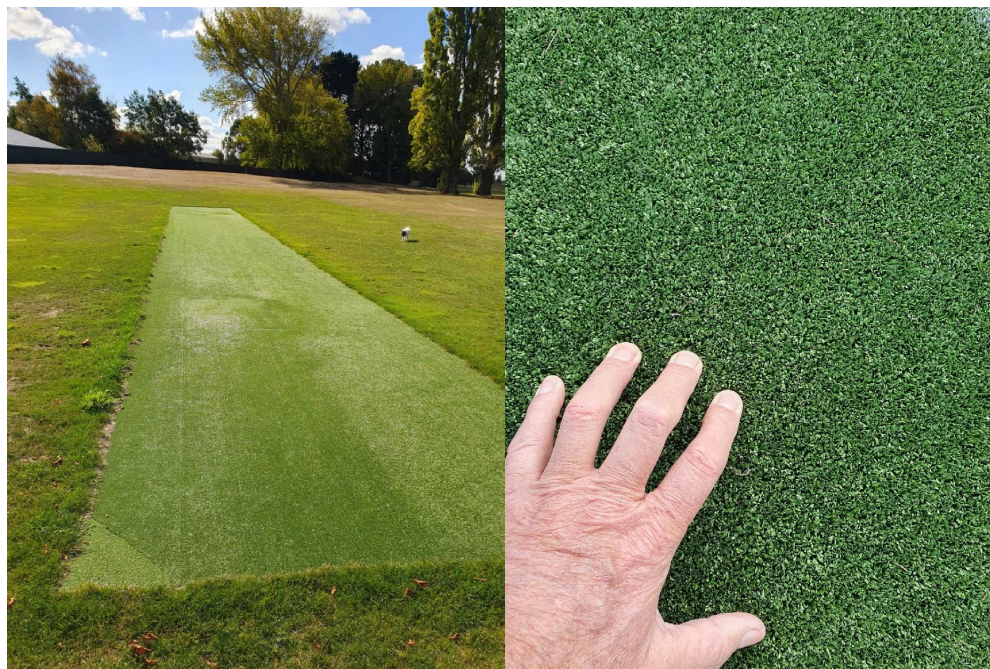
Artificial Nets - Worn internal surface

- Run-ups superb
- Internal surface worn
- Divets will lead to rips
- Safety issue
- Result of high use
- Quote obtained
- LTP request
- Fundraising



John Grocott Oval - Irrigation

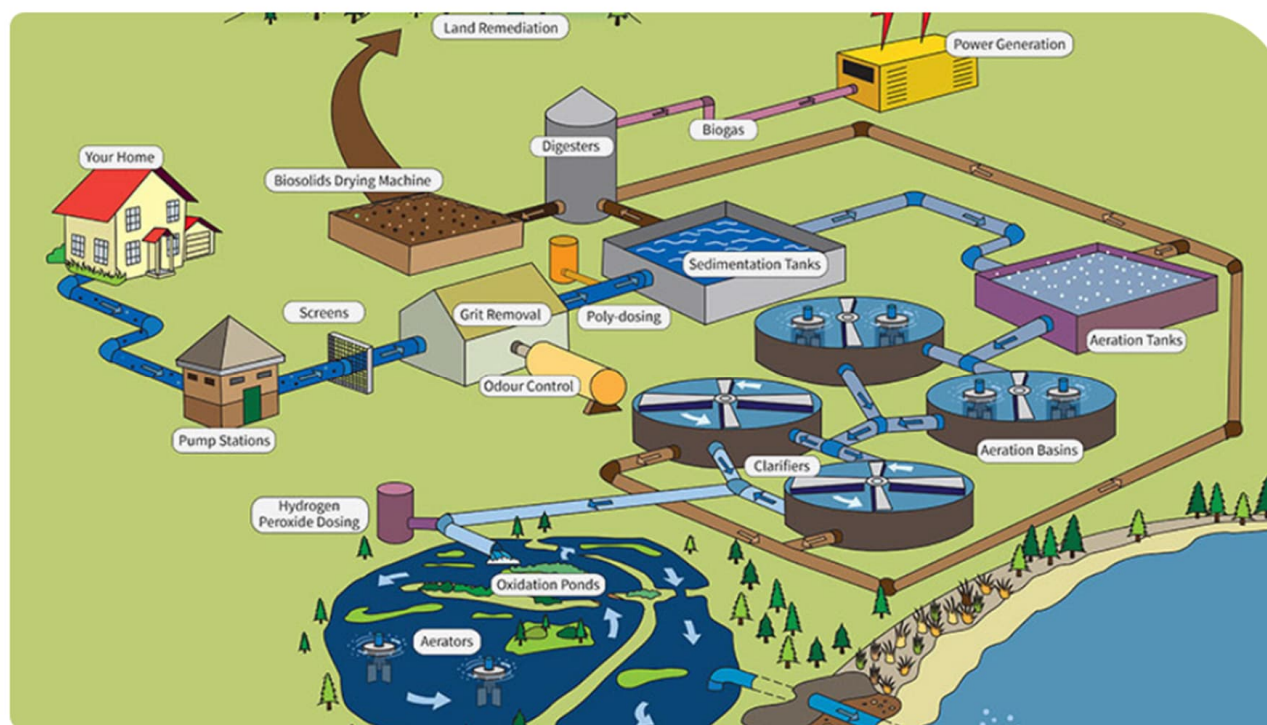
- Pitch great asset
- Multi-funded
- Council outfield work
- K-line manual watering
- Lucky so far
- Long term irrigation need
- LTP request



Community Liaison Group

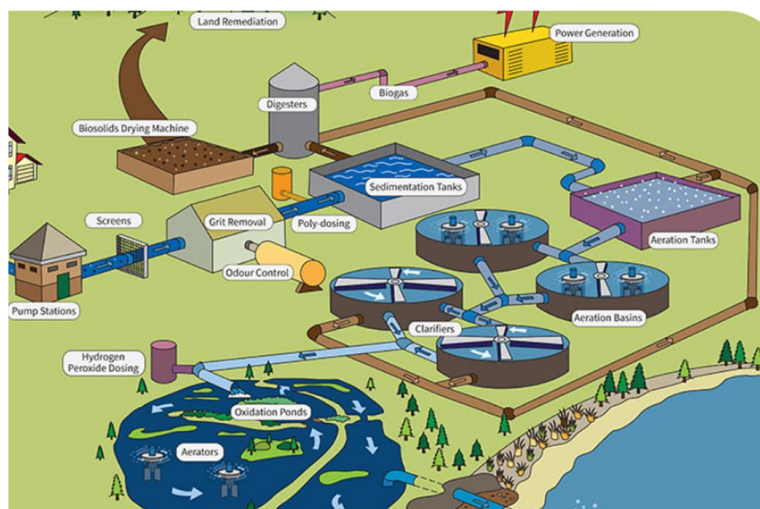
CWTP Odour – Sources & Actions

Christchurch Wastewater Treatment Plant - Overview of processes



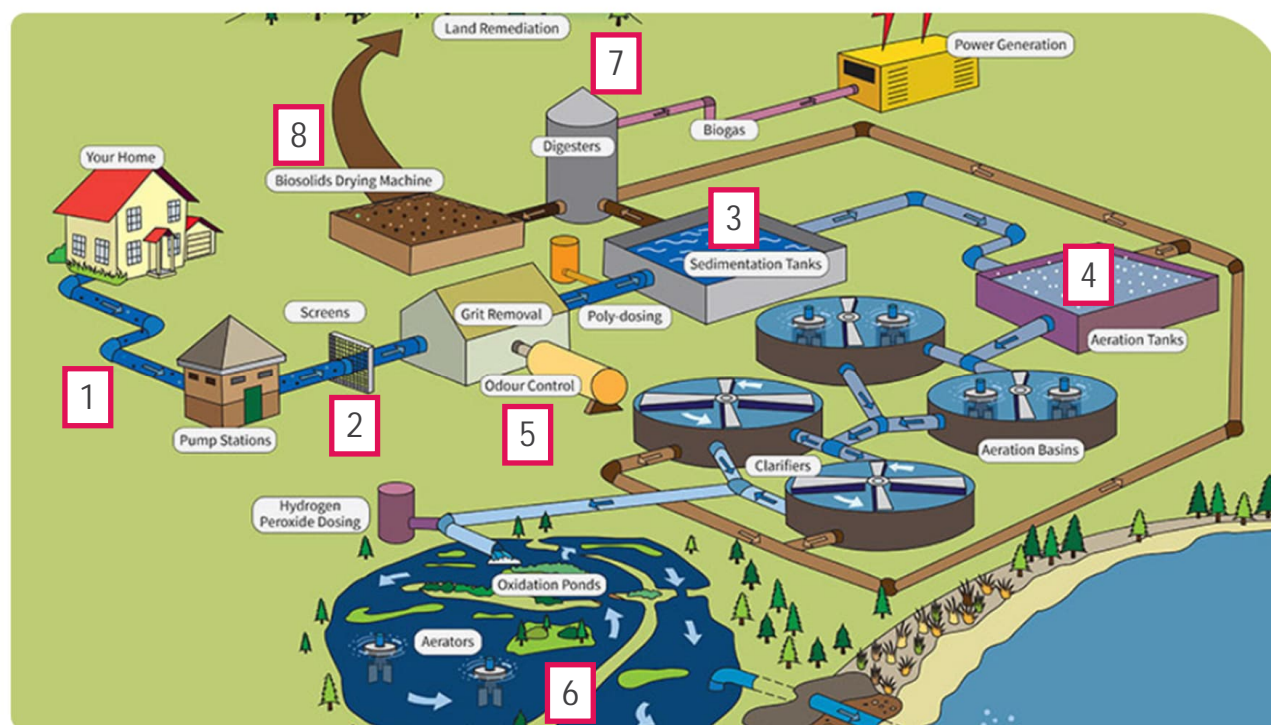
9 April 2024

Intensive odour investigation



Over the past several weeks, Our consultant has been undertaking an intensive odour investigation across the site.

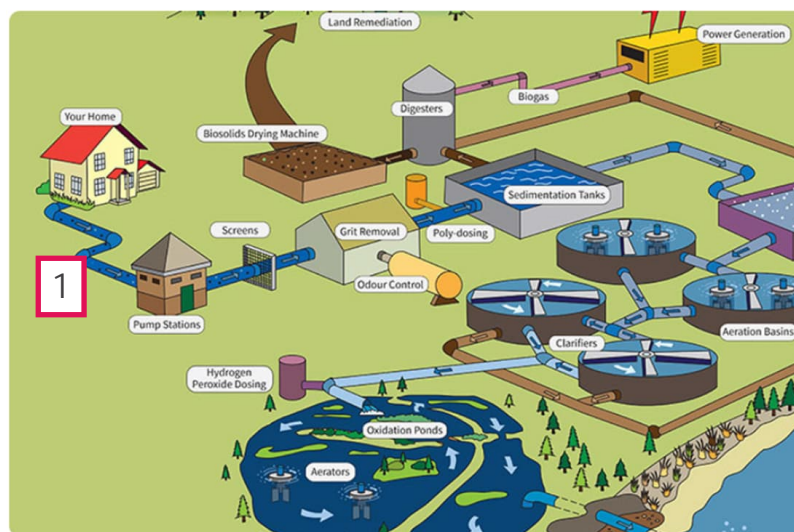
Identified odour sources



1. Tradewaste
2. Screen Room
3. Sedimentation Tanks
4. Temporary Secondary Treatment
5. Odour control system
6. Oxidation ponds
7. Digester
8. Sludge dryer

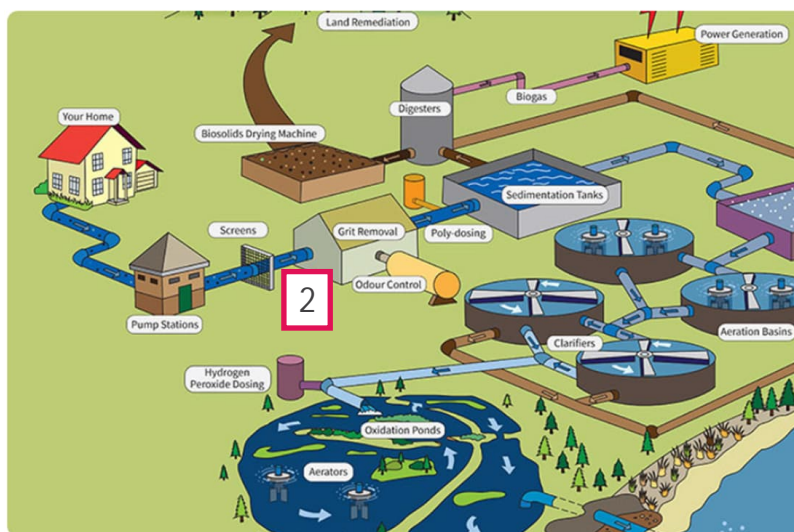
Key for following slides:
Green - completed
Orange – underway

1. TradeWaste



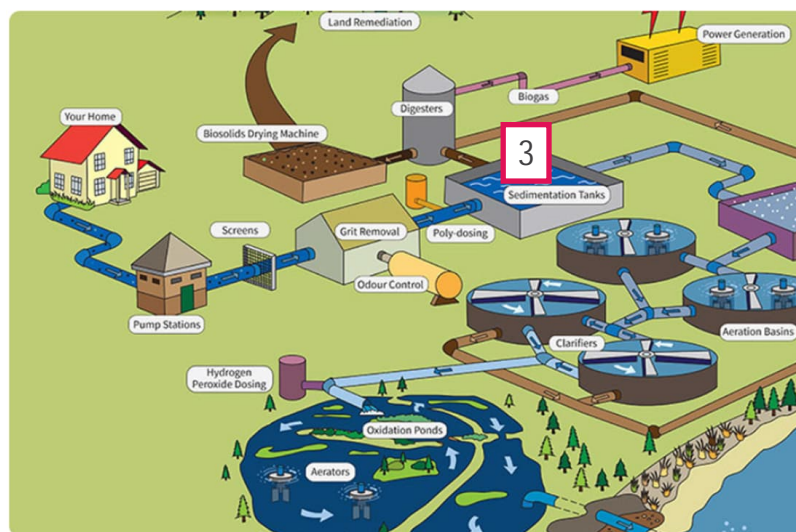
- We have been continuously working with the Trade Waste team to establish if this is a possible source of odour.
- Currently, no potential source of Trade Waste odour has been identified.

2. Screen Room



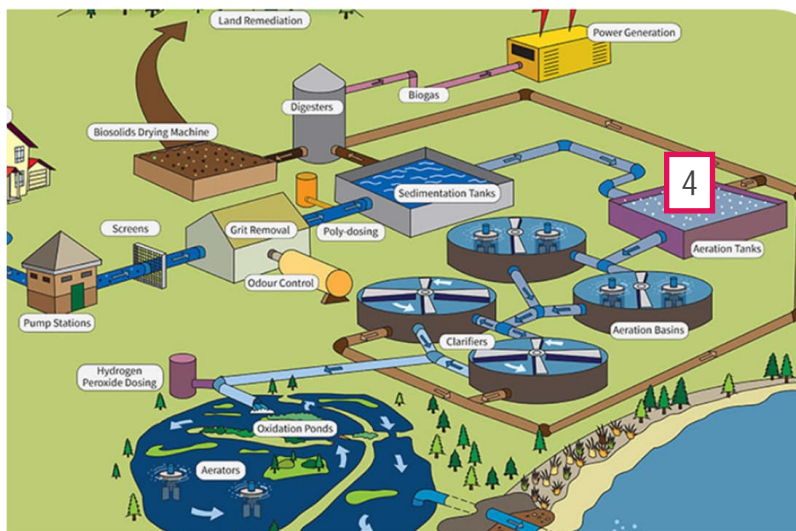
- Temporary ventilation system has been installed
- A new permanent ventilation system is required to be installed

3. Primary Settlement Tank



- Reduce the number of primary tanks in service.
- Undertake scum removal daily through manual hosing down.
- Assess whether contractor could be used to remove the scum utilising specialist machinery.
- Engaged with contractor for odour containment system.
- Cover chambers where there is significant surface disturbance – Work in progress.
- Improve the automatic water spray scum removal.

4. Temporary Secondary Treatment



- Consultant has been engaged to review the design parameters and provide operational, troubleshooting documentation and optimisation.

5. Odour Control System



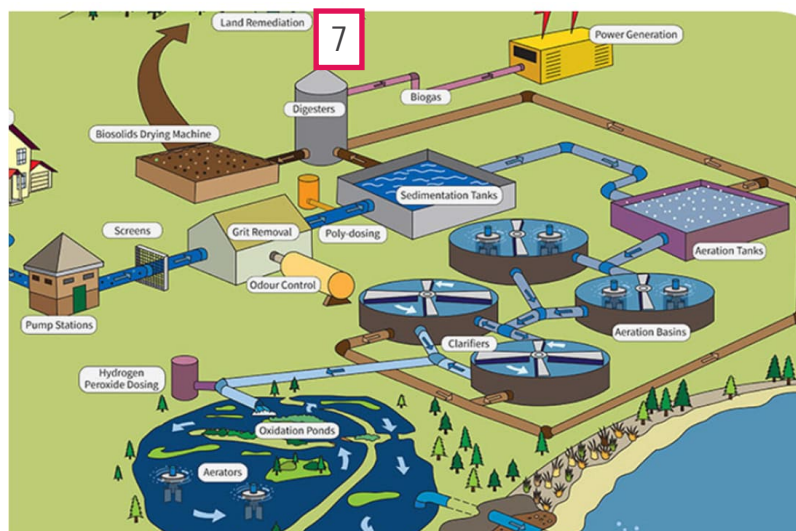
- Increase the odour control system suction.
- More proactive maintenance monitoring to ensure the sub-optimal system.
- Engaged contractor to renew the remaining bed media (est. completion in one month).

6. Oxidation ponds



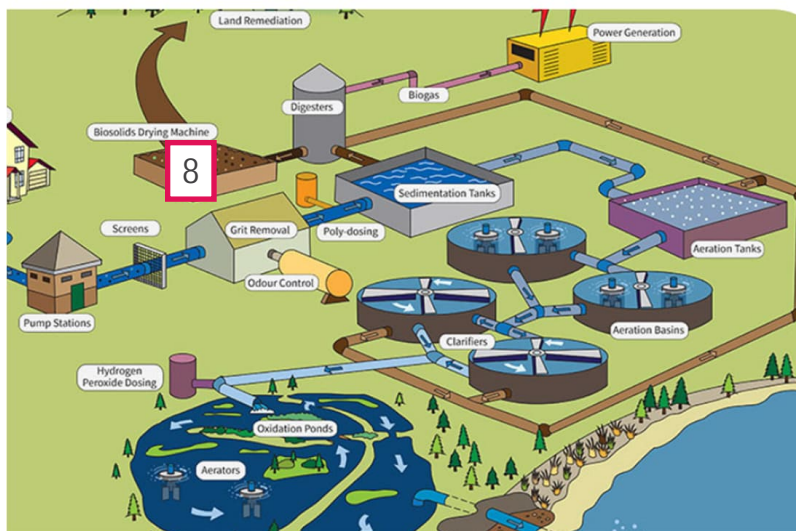
- Staff are working closely with the contractor to ensure the pond aerator reliability improves and that all aerators are available to be operated at the maximum design capacity.
- Develop Standard Operation Procedure (SOP) to minimise the potential for odour generation during summer/winter transition.
- SOP will be implemented next week to prepare the pond transition

7. Digesters



- There is currently a biogas project to upsize the biogas conveyance pipework (est. completion FY25).
- Undertake a proactive maintenance schedule to regularly clean the pressure release valves to minimise the amount of biogas being released.

8. Sludge dryer



- The sludge dryers will undergo an extensive maintenance overhaul following their installation 12 years ago (the project starts this year).

Ongoing activities

- Intensive odour monitoring service underway
- Odour management activity plan is a living document
- Continuing to work through the actions and adjust accordingly

Upcoming communication milestones

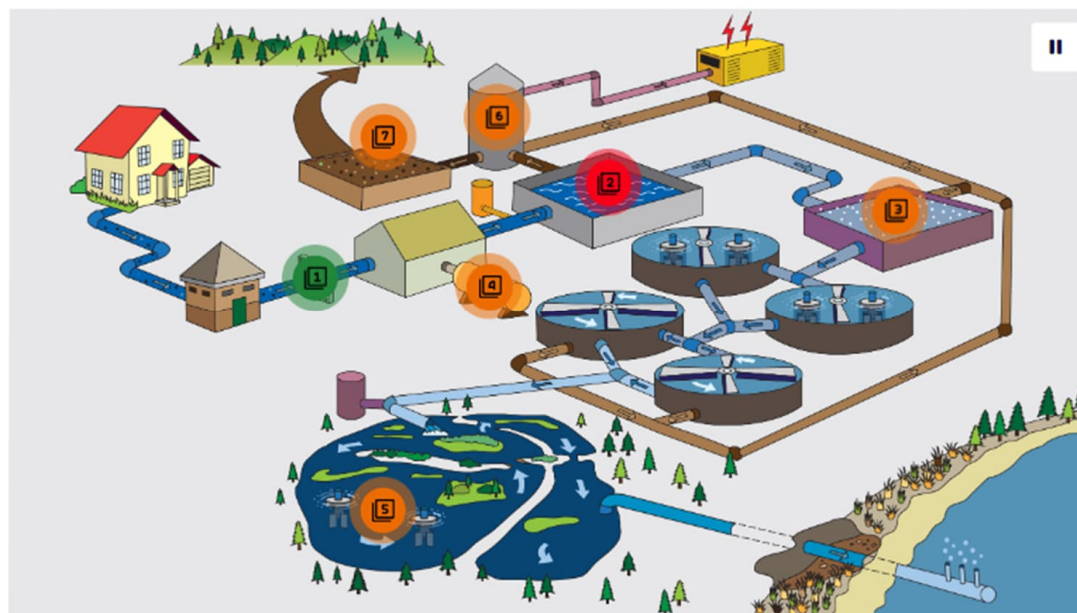
- Response to Environment Canterbury's compliance report – Has been provided
- Transition to winter mode and odour implications – Underway this week
- Weekly air quality information – ongoing
- Operational changes and maintenance work – ongoing
- Report on Wastewater Treatment Plant going to Council – 15th May
 - (PX to protect commercial / insurance sensitivity, will release what we can, when we can)

Upcoming communication milestones

- Response to Environment Canterbury's compliance report – Has been provided
- Transition to winter mode and odour implications – Underway this week
- Weekly air quality information – ongoing
- Operational changes and maintenance work – ongoing
- Report on Wastewater Treatment Plant going to Council – 15th May
 - (PX to protect commercial / insurance sensitivity, will release what we can, when we can)

Revised Webpage;

- https://ccc.govt.nz/services/water-and-drainage/wastewater/treatment-plants/christchurch-wastewater-treatment-plant/wastewaterfire/the-situation/?fbclid=IwAR3U1Lx9eXgkRcr9WS9eJbWUFuKX8otUCsNbwkg6kTI30TuqyGCFgKHIEz4_aem_Ac7E11HDxo8MHbIhIDo5F7dr18uSiD2eaPohSPYwZXIfYuxQrkINI15N0wMB9L4poiX1v1M7B89K9CKfmk2EBrce



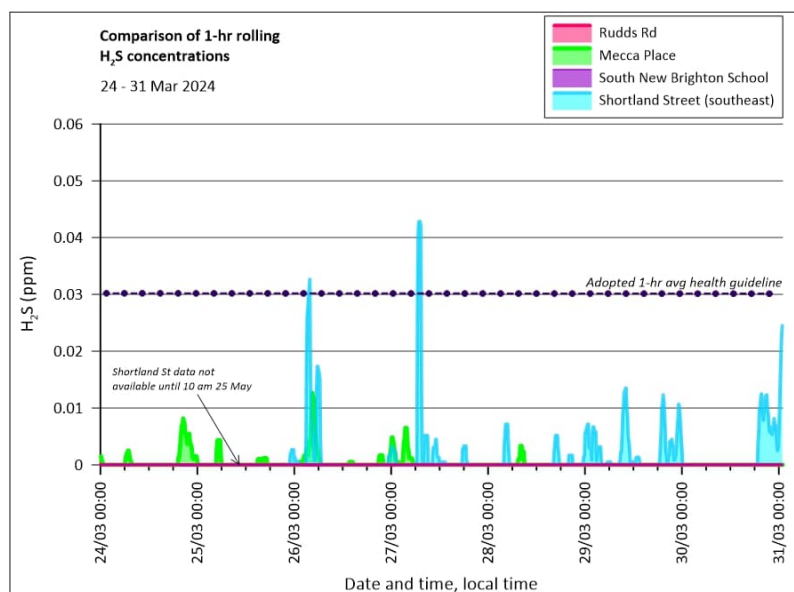
Inter-Agency Communications

- Fortnightly Meeting with Ecan officers to discuss -
 - Air Quality Monitoring
 - Treatment Operations
 - Complaint Updates
 - Communications
- Ecan provide weekly updates of complaint data and early notification of clusters
- Medical Officer of Health kept up to date by Email

Current Residential Sites



Weekly Sampling Results



- H_2S levels are being detected at Shortland St and Mecca Place depending on wind direction
- No detection at South Brighton as this location more influenced by ponds which are performing OK at present.

Linwood Park pavilion and toilet renewal

Report to the Coastal-Burwood-Linwood Community Board
8 April 2024



Purpose of the report

- To provide an update on the Linwood Park changing room renewal
- To present recommendations to the Board for renewal of the changing room

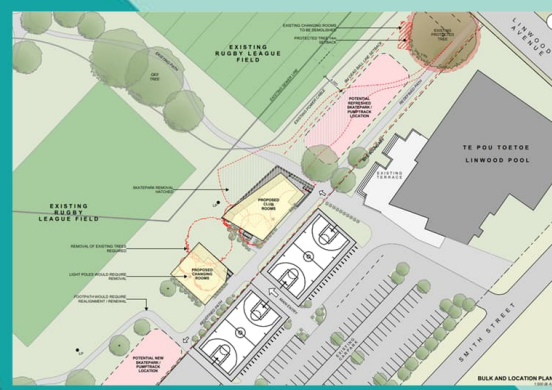
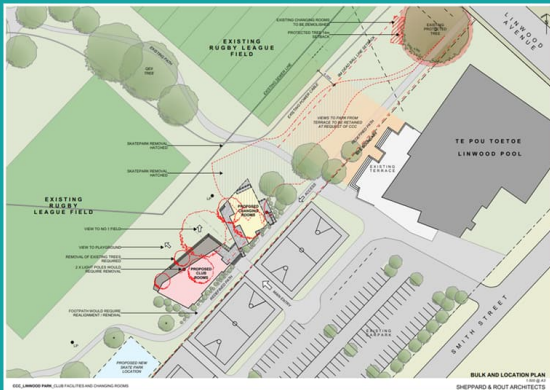
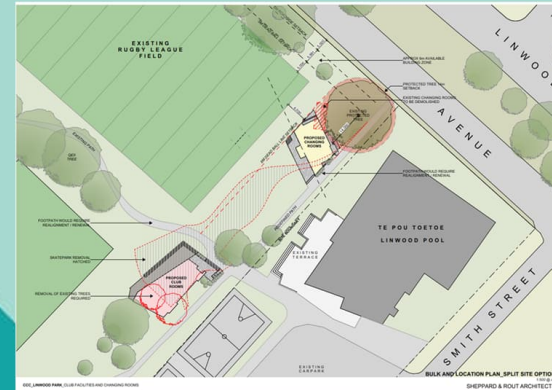
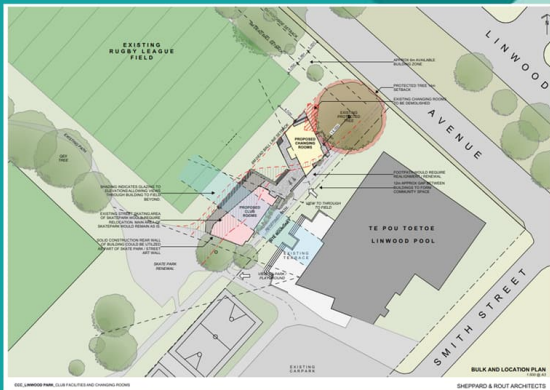
Note: this report deals only with the changing room renewal

Current layout



3

Several location options considered



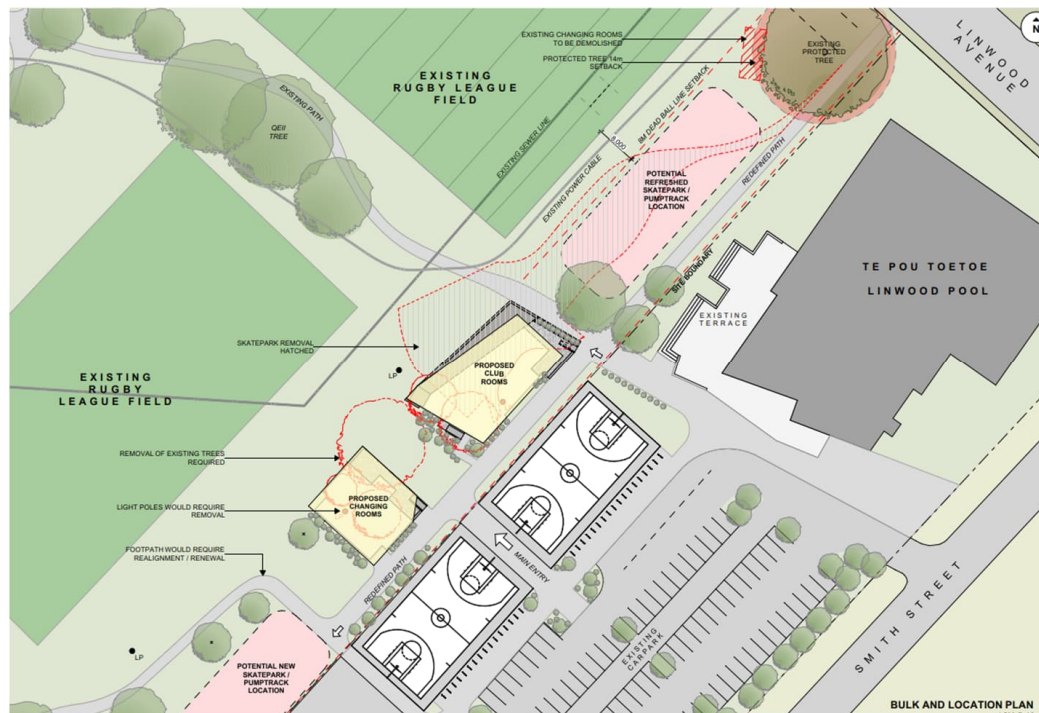
Current recommended building locations

Spacing between two buildings better for meeting CPTED requirements

Design of changing rooms optimised for internal layout

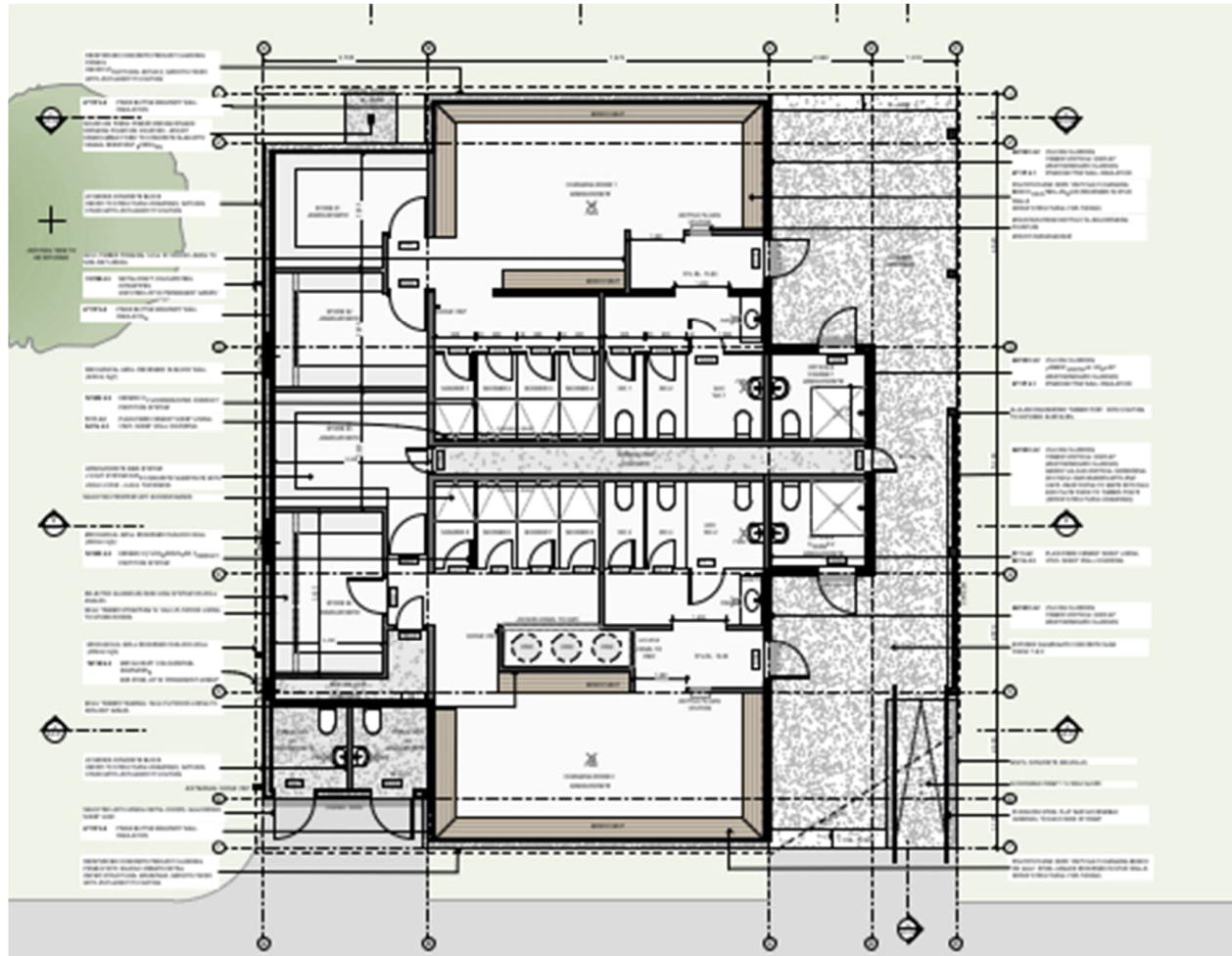
Good alignment for flow into the park and adjacent facilities

5



Floor
plan
view

6



Implications

- Tree removal required



Proposed tree replacement for Board approval



Recommendations

- Receive this report
- Approve proceeding to detailed design, resource and building consent and construction
- Approve removal of five existing trees and planting of 10 replacement trees (7 x Totara and 3 x Manuka)

Questions?

10