

Multicultural Committee
MINUTES ATTACHMENTS

Date: Friday 4 March 2022
Time: 1pm
Venue: Via audio/video link

TABLE OF CONTENTS	PAGE
7. Treaty Relationships Team Update Report	
A. Treaty Relationship Presentation	3
8. Improving Diversity and Representation in our Research	
A. Monitoring & Research Unit Research Programme Presentation.....	13

Treaty Relationship Team

Brief to the Multi Cultural Committee



CCC, Ngāi Tahu & Mana Whenua

Kia atawhai ki te iwi - Care for the people

Pita Te Hori Upoko - Ngāi Tūāhuriri, 1861

CCC, Ngāi Tahu & Mana Whenua

Ngāi Tahu



3

Mana whenua



Mana whenua across CCC takiwā



4

CCC, Ngāi Tahu & Mana Whenua

The 'law' of the partnership

Te Tiriti o Waitangi 1840

Deeds of Purchase 1848 - 1856 (Ngai Tahu specific)

Town & Country Planning Act 1958 (rezoning of Māori Reserve lands)

Resource Management Act 1997

Ngāi Tahu Deed of Settlement 1997

Ngāi Tahu Claims Act 1998

Local Government Act 2002

CERA Act 2011 / Greater Chch Regeneration Act 2016

CCC, Ngāi Tahu & Mana Whenua

The 'lore' of the partnership

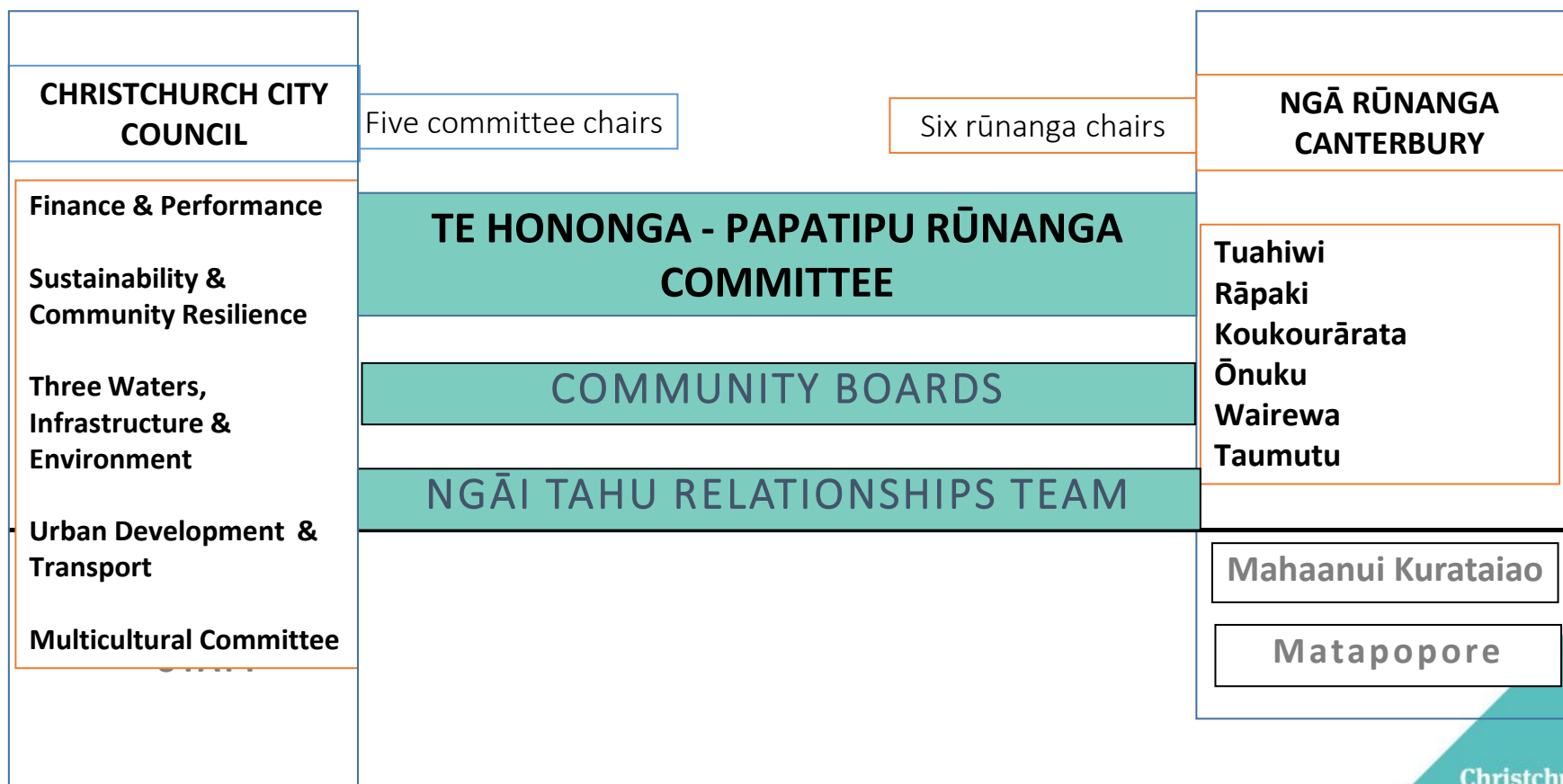
Mō tātou, ā, mō kā uri ā muri ake nei

Environment: Te Mana o te Wai Te Mana o te Whenua

Water / Climate Change

Kāinga Nohoanga Development

CCC, Ngāi Tahu & Mana Whenua



CCC, Ngāi Tahu & Mana Whenua

The Ngāi Tahu Relationship Team:

- Advisors & Connectors for CCC staff to Ngāi Tahu and mana whenua.
- Connect cultural perspectives to emerging policies and strategies in CCC.
- Deliver cultural support and advice to CCC and their key partners (major events).
- Advocates for collaborative solutions between CCC staff and mana whenua.
- Promote te reo Māori learning opportunities to CCC staff.
- Actively promote the strengthening of the CCC - mana whenua partnership.

Community Engagement: Multi-cultural Committee

The key differences between a treaty relationship and ‘other culture’ relationships

Connecting the committee to Mana whenua

Supporting important cultural occasions

Strengthening Cross cultural learning (what we can learn from you)

Te Reo & Te Ao Māori learning opportunities

Questions

10

MRT Primary Research Programme

Residents Survey Programme | Point of Contact & General Service Satisfaction |
Annual (November – February)

Life in Christchurch Programme | Topic Based & Pulse Issues | 3 – 4 surveys spread
throughout the year

Big Cities Quality of Life Survey | Quality of Life Issues | Every 2 years

Life in Christchurch Panel Demographics

Ethnicity	% of Panel	% of Population	Ethnicity	% of Panel	% of Population
NZ European	83.9%	71.6%	Filipino	0.3%	2.8%
British & Irish	8.2%	2.8%	Korean	0.3%	0.9%
Other (Please Specify)	7.7%		Cook Islands Maori	0.2%	0.5%
Maori	5.9%	9.9%	Japanese	0.2%	0.7%
Other European	3.3%	5.6%	Tongan	0.2%	0.6%
Australian	2.0%	0.7%	Sri Lankan	0.2%	0.3%
American	1.8%	0.004%	Vietnamese	0.2%	0.2%
Chinese	1.4%	5.1%	Cambodian	0.1%	0.1%
Canadian	1.1%	0.002%	Middle Eastern	0.1%	0.5%
Indian	0.8%	3.3%	Tokelauan	0.1%	0.04%
Latin America	0.8%	0.6%	Fijian	0.1%	0.3%
Samoan	0.7%	2.2%	Niuean	0.1%	0.2%
African	0.5%	0.4%			

The situation

Over Represented

- NZ European
- British & Irish
- Australian
- American
- Canadian
- Latin American

About Right

- African
- Fijian
- Cook Islands Maori
- Sri Lankan
- Vietnamese
- Tokelauan

Under Represented

- Maori
- Other European
- Chinese
- Indian
- Samoan
- Filipino
- Japanese
- Korean
- Middle Eastern
- Tongan
- Niuean
- Cambodian

The problem...

How do we give the groups that we aren't
hearing from more of a voice?

Potential Barriers

Time

Trust

Relevance

Understanding (process and impacts)

Other priorities

Language barriers

Other access barriers

What research pieces should we prioritise?

General Service Satisfaction Survey (Residents Survey Programme)

Communities & Neighbourhoods (Life in Christchurch Programme)

Arts, Culture & Heritage (Life in Christchurch Programme)

Climate Change (Life in Christchurch Programme)

Which groups should we focus on?

The approach

1. A collaborative approach
2. Leverage off the connections and relationships that the committee already has with a range of communities
3. Work with communities on how we can make participating more attractive – what issues are important to them?
4. Continue to leverage off the Life in Christchurch Panel as one of the most important tools that we have. Improve representation on the panel.
5. Closing the loop

Some options

1. Focus on building the survey panel
2. Alternative methodologies & frequencies
3. Different tiers of research with different treatments applied