

Waitai Coastal-Burwood Community Board AGENDA

Notice of Meeting:

An ordinary meeting of the Waitai Coastal-Burwood Community Board will be held on:

Date: Monday 14 March 2022

Time: 4.30pm

Venue: Audio/Visual Link

Under the provision of the Covid-19 Protection Framework (the Traffic Alert system) meeting attendance is only possible via an Audio/Visual link or by viewing a live stream

<https://www.youtube.com/channel/UCI96HGy4yTuHdxoX3617V0g> of the meeting.

Please request access details from cindy.sheppard@ccc.govt.nz for the Audio/Visual link.

Membership

Chairperson	Kelly Barber
Deputy Chairperson	Jo Zervos
Members	Celeste Donovan
	Bebe Frayle
	Phil Mauger
	Linda Stewart

8 March 2022

Christopher Turner-Bullock
Manager Community Governance, Coastal-Burwood
941 8233
christopher.turner@ccc.govt.nz
www.ccc.govt.nz

Note: The reports contained within this agenda are for consideration and should not be construed as Council policy unless and until adopted. If you require further information relating to any reports, please contact the person named on the report.

To view copies of Agendas and Minutes, visit:

<https://www.ccc.govt.nz/the-council/meetings-agendas-and-minutes/>



Developing Resilience in the 21st Century

Strategic Framework

Whiria ngā whenu o ngā papa,
honoa ki te maurua tāuiki

Bind together the strands of each mat and join
together with the seams of respect and reciprocity

Ōtautahi-Christchurch is a city of opportunity for all

Open to new ideas, new people and new ways of doing things – a city where anything is possible

Principles

Being open,
transparent and
democratically
accountable

Promoting
equity, valuing
diversity and
fostering inclusion

Taking an inter-generational approach
to sustainable development,
prioritising the social, economic
and cultural wellbeing of
people and communities
and the quality of the
environment, now
and into the
future

Building on the
relationship with
Te Rūnanga o Ngāi Tahu
and the Te Hononga-Council
Papatipu Rūnanga partnership,
reflecting mutual understanding
and respect

Ensuring
the diversity
and interests of
our communities
across the city and the
district are reflected in
decision-making

Actively collaborating and
co-operating with other
local, regional
and national
organisations

Community Outcomes

Resilient communities

Strong sense of community
Active participation in civic life
Safe and healthy communities
Celebration of our identity
through arts, culture, heritage,
sport and recreation
Valuing the voices of all cultures
and ages (including children)

Liveable city

Vibrant and thriving city centre
Sustainable suburban and
rural centres
A well connected and accessible
city promoting active and
public transport
Sufficient supply of, and
access to, a range of housing
21st century garden city
we are proud to live in

Healthy environment

Healthy water bodies
High quality drinking water
Unique landscapes and
indigenous biodiversity are
valued and stewardship
exercised
Sustainable use of resources
and minimising waste

Prosperous economy

Great place for people, business
and investment
An inclusive, equitable economy
with broad-based prosperity
for all
A productive, adaptive and
resilient economic base
Modern and robust city
infrastructure and community
facilities

Strategic Priorities

Enabling active
and connected
communities
to own their future

Meeting the challenge
of climate change
through every means
available

Ensuring a high quality
drinking water supply
that is safe and
sustainable

Accelerating the
momentum
the city needs

Ensuring rates are
affordable and
sustainable

Ensuring we get core business done while delivering on our Strategic Priorities and achieving our Community Outcomes

Engagement with
the community and
partners

Strategies, Plans and
Partnerships

Long Term Plan
and Annual Plan

Our service delivery
approach

Monitoring and
reporting on our
progress

Part A	Matters Requiring a Council Decision
Part B	Reports for Information
Part C	Decisions Under Delegation

TABLE OF CONTENTS

Karakia Tīmatanga	4
C 1. Apologies Ngā Whakapāha	4
B 2. Declarations of Interest Ngā Whakapuaki Aronga	4
C 3. Confirmation of Previous Minutes Te Whakaāe o te hui o mua	4
B 4. Public Forum Te Huinga Whānui	4
B 5. Deputations by Appointment Ngā Huinga Whakaritenga.....	4
B 6. Presentation of Petitions Ngā Pākikitanga	4
B 7. Correspondence	13

STAFF REPORTS

A 8. Dedication of Road Reserve as Legal Road - Cameo Grove and Burwood Road.....	17
A 9. Slow Speed Neighbourhoods Avondale	21
C 10. Burwood Road Proposed No Stopping Restrictions.....	35
C 11. Waitai Coastal-Burwood Community Board - Meeting Schedule 2022	41
B 12. Waitai Coastal-Burwood Community Board Area Report - March 2022.....	45
B 13. Elected Members' Information Exchange Te Whakawhiti Whakaaro o Te Kāhui Amorangi.....	75

Karakia Whakamutunga

Karakia Tīmatanga

1. Apologies Ngā Whakapāha

At the close of the agenda no apologies had been received.

2. Declarations of Interest Ngā Whakapuaki Aronga

Members are reminded of the need to be vigilant and to stand aside from decision making when a conflict arises between their role as an elected representative and any private or other external interest they might have.

3. Confirmation of Previous Minutes Te Whakaāe o te hui o mua

That the minutes of the Waitai Coastal-Burwood Community Board meeting held on [Monday, 14 February 2022](#) be confirmed (refer page 5).

4. Public Forum Te Huinga Whānui

A period of up to 30 minutes will be available for people to speak for up to five minutes on any issue that is not the subject of a separate hearings process.

There were no public forum requests received at the time the agenda was prepared.

5. Deputations by Appointment Ngā Huinga Whakaritenga

Deputations may be heard on a matter or matters covered by a report on this agenda and approved by the Chairperson.

There were no deputations by appointment at the time the agenda was prepared.

6. Presentation of Petitions Ngā Pākikitanga

There were no petitions received at the time the agenda was prepared.

Waitai Coastal-Burwood Community Board OPEN MINUTES

Date: Monday 14 February 2022
Time: 4.31pm
Venue: Audio/Visual Link

Present

Chairperson	Kelly Barber
Deputy Chairperson	Jo Zervos
Members	Celeste Donovan
	Bebe Frayle
	Phil Mauger
	Linda Stewart

Christopher Turner-Bullock
Manager Community Governance, Coastal-Burwood
941 8233
christopher.turner@ccc.govt.nz
www.ccc.govt.nz

Post Meeting Note:

It is noted that this meeting was held via audio/visual link on the Zoom platform due to the country being under COVID-19 Protection Framework (the Traffic Alert System Red) on the date the meeting was scheduled. These minutes provide a written summary of the meeting proceedings.

Karakia Tīmatanga: Led by Kelly Barber.

The agenda was dealt with in the following order.

1. Apologies Ngā Whakapāha

Part C

The Chair called for apologies and there were no apologies.

2. Declarations of Interest Ngā Whakapuaki Aronga

Part B

The Chair asked members if they wished to declare an interest in any item on the Agenda. There were no declarations of interest recorded.

3. Confirmation of Previous Minutes Te Whakaāe o te hui o mua

Part C

The Chair asked members to confirm the previous minutes were a true and accurate account of the meeting. No issues or questions were raised. The Chair moved the officer recommendation, which was seconded by Jo Zervos. Following invitation from the Chair, there was no debate on the item and the motion was put to the vote and carried unanimously.

Community Board Resolved CBCB/2022/00001

That the minutes of the Waitai Coastal-Burwood Community Board meeting held on Monday, 6 December 2021 be confirmed.

Kelly Barber/Jo Zervos

Carried

4. Public Forum Te Huinga Whānui

Part B

4.1 Spencerville Residents' Association

Craig Pawsey, President of the Spencerville Residents' Association addressed the Board in relation to road safety measures in Spencerville area. Mr Pawsey read from a prepared statement which is attached to these minutes.

Part B

That the Waitai Coastal-Burwood Community Board:

1. Refers the issues raised by the Spencerville Residents' Association in relation to preventing speeding drivers in the Spencerville Community to staff for investigation and response back to the Community Board by way of memorandum.

Attachments

- A Spencerville Residents' Association - Public Forum Statement

5. Deputations by Appointment Ngā Huinga Whakaritenga

Part B

There were no deputations by appointment.

6. Presentation of Petitions Ngā Pākikitanga

Part B

There was no presentation of petitions.

7. Correspondence - Aileen Trist - Fronds Lighting

Council Officers in attendance took the report as read.

The Chair called for questions. There were no questions.

The Chair moved the Officer recommendation and called for a seconder. Jo Zervos seconded the Officer recommendation. Following invitation from the Chair, there was no debate on the item. The motion was put to the vote and carried unanimously.

Community Board Resolved CBCB/2022/00002 Original Officer Recommendation accepted without change

Part B

That the Coastal-Burwood Community Board:

1. Receive the correspondence from Aileen Trist in relation to lighting for the Anzac Fronds on the corner of New Brighton Road and Anzac Drive and refer to staff for investigation and response back to the Community Board.
2. Note that the Mayor has been made aware of this request.

Kelly Barber/Jo Zervos

Carried

8. Bexley Reserve Pump Track

Council Officers in attendance took the report as read.

The Chair called for questions. There were no questions.

The Chair called for a mover and seconder. Phil Mauger moved the Officer recommendation which was seconded by Bebe Frayle. Following invitation from the Chair, there was no debate on the item. The motion was put to the vote and carried unanimously.

Community Board Resolved CBCB/2022/00003 Officer Recommendation accepted without change

Part C

That the Waitai Coastal-Burwood Community Board:

1. Approve the updated Bexley Reserve Concept Plan as shown in 5.1 of the agenda report.
2. Approve the construction of a pump track as indicated in 5.1 of the agenda report.

Phil Mauger/Bebe Frayle

Carried

9. Waitai Coastal-Burwood 2021-22 Discretionary Response Fund Application - Drug-Arm Christchurch

Council Officers in attendance took the report as read.

The Chair called for questions.

Bebe Frayle asked why the Officer recommendation was not 100 percent of what was requested by the group. Council Officers in attendance explained that they had reinforced sustainability and for the group to gain funding from an array of sources and funders.

The Chair called for a mover to the Officer recommendation. Phil Mauger moved the Officer recommendation which was seconded by the Chair.

Bebe Frayle moved an amendment to the motion to grant \$6,500 to Drug-Arm Christchurch towards rental costs for the project Art-East at 118 Shortland Street, Wainoni. The Chair called for a seconder. There was no seconder to the amendment.

Following invitation from the Chair, there was no debate on this item. The Chair put the original motion being the staff recommendation to the vote and carried unanimously.

Community Board Resolved CBCB/2022/00004 Officer Recommendation accepted without change

Part C

That the Waitai Coastal-Burwood Community Board:

1. Approves a grant of \$5,000 from its 2021-22 Discretionary Response Fund to Drug-Arm Christchurch towards rental costs for the project Art-East at 118 Shortland Street, Wainoni.

Phil Mauger/Kelly Barber

Carried

10. Waitai Coastal-Burwood Community Board Area Report - February 2022

Council Officers in attendance took the report as read but wanted to highlight a change to an item in the report. Officers explained that due to the COVID-19 Protection Framework system, the reinvented I Love Brighton Day events have been cancelled. Officers did inform those present that the planning group were working on the event going ahead on Waitangi Day 2023 at Thompson Park.

The Chair asked for questions on this item.

Bebe Frayle asked how much of the budget has been spent or lost due to the preparation work already undertaken. Council Officer informed those present that only initial planning had been undertaken and that they were seeking to have the funds transferred to the next financial year.

Council Officers asked the Board for their support for the funding to be transferred. The Chair asked those present if they supported this. There was unanimously support from the Board to have the funding transferred to the next financial year for the 2023 I Love Brighton event.

There were no other questions.

The Chair moved the Officer recommendation and called for a seconder. Linda Stewart seconded the Officer recommendation. Following invitation from the Chair, there was no debate on the item. The motion was put to the vote and carried unanimously.

Community Board Resolved CBCB/2022/00005 Original Officer Recommendation accepted without change

Part B

That the Waitai Coastal-Burwood Community Board:

1. Receive the Waitai Coastal-Burwood Community Board Area Report for February 2022.

Kelly Barber/Linda Stewart

Carried

11. Elected Members' Information Exchange Te Whakawhiti Whakaaro o Te Kāhui Amorangi

Part B

Board Members exchanged information on various matters of interest:

- PEEEP Trust – difficulties with COVID-19 vaccination policy
- ACTIS – upcoming meeting
- Te Tira Kāhikuhiku – have not met since December 2021. Due to meet on 22 February 2022
- Dallington Residents' Association – impacted by cancellation of events
- Dallington Landing – opening end of February/beginning of March 2022
- Dallington Community Trust – impacted by cancellation of events
- Flooding – wide spread in the wards
- PEEEP Trust – invitation to provide the Board with an update
- Southshore Residents' Association – meeting 14 February 2022
- New Brighton Museum – funding going well
- CEAT Group – meeting attendance
- Pages Road Bridge – dip on bridge path – no changes to date.
- Community Garden – Volunteers working with Citycare to install a cabin
- Marine Parade Garden Plots – widespread issue of maintenance
- Admirals Way Dog Park – meeting to be rescheduled
- Beach Mosaic – give a little page set up
- Crime rates – appear to be going up in the Brighton area
- Travis Road Medium Strip – waiting on consultation
- Prestons New World – working with staff on safety concerns and yellow lines
- Rubbish bin complaints – city wide issue
- Trees – residents' complaints
- Community Safety – meeting with MP Poto Williams and local residents
- Sustainable Coast Lines – meeting attendance
- Pukeko Centre – meeting attendance

- Hot Pools – since the opening, there has been a 15 percent increase in spending in local area
- WACST – 20 year anniversary 4 March 2022
- Hawke Street – footpath concerns and timing expectations

Karakia Whakamutunga: Led by Kelly Barber.

Meeting concluded at 5.18pm.

CONFIRMED THIS 14TH DAY OF MARCH 2022

KELLY BARBER
CHAIRPERSON

7. Correspondence

Reference Te Tohutoro: 22/222699

Report of Te Pou Matua: Cindy Sheppard, Community Board Advisor
cindy.sheppard@ccc.govt.nz

General Manager Mary Richardson, General Manager, Citizens and Community
Pouwhakarae: mary.richardson@ccc.govt.nz

1. Purpose of Report Te Pūtake Pūrongo

Correspondence has been received from:





Name	Subject
Burwood East Residents' Association	New Brighton Road Stop Bank – Pedestrian Access
Pukeko Centre	Draft Annual Plan – Support for Funding

2. Officer Recommendations Ngā Tūtohu

That the Waitai Coastal-Burwood Community Board:

1. Receive the correspondence from the Burwood East Residents' Association in relation to safe pedestrian access on the New Brighton Road stop bank and refer to staff for investigation and response back to the Community Board by way of Memorandum.
2. Receive the correspondence from Andrew Weastall on behalf of the Pukeko Centre and consider supporting the proposal to grant the Pukeko Centre \$200,000 by way of a Board Submission to the Draft Annual Plan.

Attachments Ngā Tāpirihanga

No.	Title	Page
A  	Burwood East Residents' Association - Pedestrian Access New Brighton Road Stop Bank	14
B  	Pukeko Centre - Draft Annual Plan Support for Funding	15

21 February 2022

Waitai Coastal-Burwood Community Board

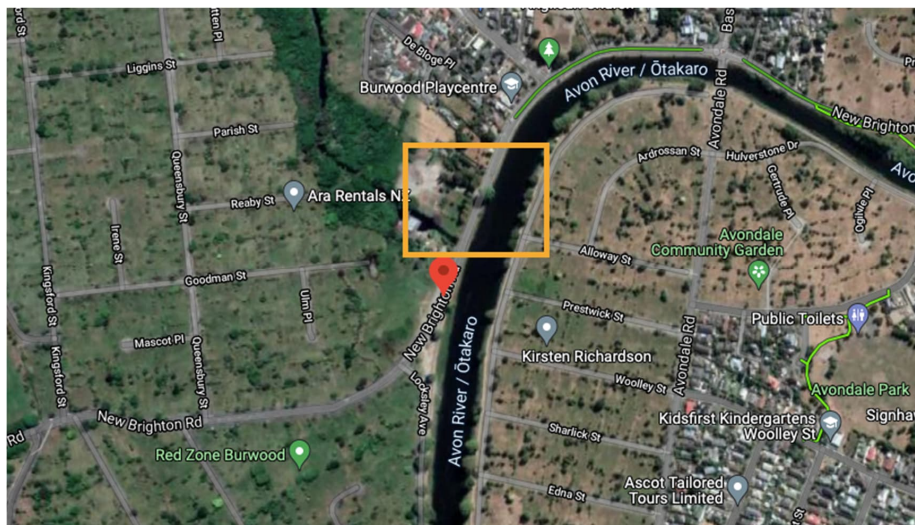
Dear Community Board Members

Burwood East Residents Association wish to raise concerns regarding an area on New Brighton Road stop bank that is hazardous for pedestrians and cyclists.

The area concerned is on the stop bank which runs along the west side of the Avon River along New Brighton Road (opposite the Pump Station). Along the stop bank is a walking/cycle dirt track, which is often used by members of the public and we would like retained.

The issue is that there is an area on the stop bank which is blocked from users. This, we believe, is due to the low hanging large tree boughs which hang over the trail and are hazardous for riders and walkers. The area which is cordoned off requires people to walk down the stop bank and walk along the roadway to enable them to rejoin the track. This is a major concern as mixing pedestrians and cyclists walking bikes on this busy road is not ideal and is hazardous.

We request that an investigation and, if possible, a safe access is made available for people using this track.



Kind regards

Gae Johns
Secretary
Burwood East Residents Association

4 March 2022

Waitai Coastal-Burwood Community Board

I am contacting the Community Board in my capacity as a committee member of The Pukeko Centre. Following on from the recent presentation at the Community Board meeting, Celeste Donovan was successful in having some additional funding for the Pukeko Centre added into the Draft Annual Plan of the Christchurch City Council.

I am sure you are aware of the addition, but just for information purposes, the proposal is to grant the Pukeko Centre \$200,000.00 per annum for the next two financial years from the Capital Endowment Fund. This is on the condition that the Pukeko Centre match the funding from other sources and that the funding provided results in the facility being open for public use. This represents a rates neutral position and as such we feel it is a really fantastic result for The Pukeko Centre and one we will be gathering support to ensure it is fulfilled.

To that end we would like to formally request the Community Board make a submission in support of the proposal in the draft annual plan, with submissions opening on 11 March 2022.

As I stated in the earlier presentation, the Community Board has been extremely supportive of the Pukeko Centre from inception, and this continues to be the case for which we are extremely thankful. If you could continue this by way of making a supporting submission this would be helpful in ensuring the draft proposal is ratified by Council and we can forge ahead with getting the Sports Hall built and open.

We are reaching out to all our key stakeholders in a similar fashion to ensure they provide supportive submissions but the support of The Community Board we consider critical to getting the result we are looking for.

Please come back to me if you require any further information or clarification on anything.

Warm regards, Andrew

Andrew Weastell

Committee Member

Pukeko Centre Incorporated

8. Dedication of Road Reserve as Legal Road - Cameo Grove and Burwood Road

Reference Te Tohutoro:	22/61352
Report of Te Pou Matua:	Raymond Qu, Property Consultant Raymond.qu@ccc.govt.nz
General Manager Pouwhakarae:	Jane Davis, General Manager Infrastructure, Planning and Regulatory Services jane.davis@ccc.govt.nz

1. Executive Summary Te Whakarāpopoto Matua

- 1.1 The purpose of this report is for the Waitai Coastal-Burwood Community Board to recommend to the Council that a Local Purpose (Road) Reserve legally described as Lot 42 DP 431366 and Lot 1 DP 420075 (hereafter, the subject land) be dedicated as road pursuant to Section 111 of the Reserves Act 1977.
- 1.2 The decision in this report is of low significance in relation to the Christchurch City Council's Significance and Engagement Policy. The level of significance was determined by assessing the impact of dedicating the land as road on the residential subdivision, rates and cost to the Council.

2. Officer Recommendations Ngā Tūtohu

That the Waitai Coastal-Burwood Community Board recommends to the Council that it:

1. Resolves to dedicate the Local Purpose (Road) Reserve more particularly described as Lot 42 DP 431366 and Lot 1 DP 420075 as road, pursuant to Section 111 of the Reserves Act 1977

3. Reason for Report Recommendations Ngā Take mō te Whakatau

- 3.1 This is an enabling decision, which will allow the road reserves to be formally legalised and merged in the road network.

4. Alternative Options Considered Ētahi atu Kōwhiringa

- 4.1 Do nothing:
 - 4.1.1 Advantages
 - There are no advantages.
 - 4.1.2 Disadvantages
 - Would not allow access to and from the adjoining development.
 - Prevents house construction.

5. Detail Te Whakamahuki

- 5.1 The subject land was vested to the Council due to the Resource Management Act requirements for private subdivisions. Road construction on these two portions of Road Reserve (21R Cameo Grove and 329Q Burwood Road) is completed, and hence Road Dedication is required.
- 5.2 The road connection is opened for through traffic. The image below shows the various land parcels (1 – 4) in relation to the accepted roading plan and panoramic photos of the physical road. Land parcels marked 1 and 2 are road reserves mentioned in 5.1. Land parcel 3 will be vested to the Council as road once CDL Land NZ Limited completes Preston Park Stage 4 subdivision. Land parcel 4 is still owned by CDL, which will also be vested as Council road should CDL decide to subdivide 12 Cameo Grove.



- 5.3 There is no staff or Community Board delegation to dedicate local purpose (road) reserve as legal road. A decision from the Council is required.
- 5.4 The decision affects the following wards/Community Board areas:
 - 5.4.1 Waitai Coastal-Burwood Community Board.

6. Policy Framework Implications Ngā Hīraunga ā- Kaupapa here

Strategic Alignment Te Rautaki Tīaroaro

- 6.1 Aligns with the Infrastructure Strategy by providing network connectivity and connection to a new housing area.
- 6.2 This report does not support the [Council's Long Term Plan \(2021 - 2031\)](#).

Policy Consistency Te Whai Kaupapa here

- 6.3 The decision is consistent with Council's Plans and Policies. The mission statement in The Living Streets Charter Policy is to create living streets and a living city where a variety of road environments support and encourage a greater range of community and street activity.

Impact on Mana Whenua Ngā Whai Take Mana Whenua

- 6.4 The decision does not involve a significant decision in relation to ancestral land or a body of water or other elements of intrinsic value, therefore this decision does not specifically impact Mana Whenua, their culture and traditions.

Climate Change Impact Considerations Ngā Whai Whakaaro mā te Āhuarangi

- 6.5 This is a private development that does not impact on the Council's climate change considerations.

Accessibility Considerations Ngā Whai Whakaaro mā te Hunga Hauā

- 6.6 The road has been formed with a standard footpath and road carriage way.

7. Resource Implications Ngā Hīraunga Rauemi

Capex/Opex Ngā Utu Whakahaere

- 7.1 Cost to Implement – nil.
7.2 Maintenance/Ongoing costs – the Council maintains the physical road.
7.3 Funding Source – Road maintenance budget.

8. Legal Implications Ngā Hīraunga ā-Ture

Statutory power to undertake proposals in the report Te Manatū Whakahaere Kaupapa

- 8.1 Section 111 of the Reserves Act 1977 provides specific provision to dedicate as road a local purpose road reserve.

Other Legal Implications Ētahi atu Hīraunga-ā-Ture

- 8.1 There is no legal context, issue or implication relevant to this decision.

9. Risk Management Implications Ngā Hīraunga Tūraru

- 9.1 This is a procedural matter that does not create any risks to the Council, unless the recommendations in this report are not adopted.

Attachments Ngā Tāpirihanga

There are no attachments for this report.

In addition to the attached documents, the following background information is available:

Document Name	Location / File Link

Confirmation of Statutory Compliance Te Whakatūtutanga ā-Ture

Compliance with Statutory Decision-making Requirements (ss 76 - 81 Local Government Act 2002).
(a) This report contains:

- (i) sufficient information about all reasonably practicable options identified and assessed in terms of their advantages and disadvantages; and
 - (ii) adequate consideration of the views and preferences of affected and interested persons bearing in mind any proposed or previous community engagement.
- (b) The information reflects the level of significance of the matters covered by the report, as determined in accordance with the Council's significance and engagement policy.

Signatories Ngā Kaiwaitohu

Author	Raymond Qu - Property Consultant
Approved By	Angus Smith - Manager Property Consultancy Kirsty Mahoney - Team Leader Asset Planning Lynette Ellis - Head of Transport & Waste Management Jane Davis - General Manager Infrastructure, Planning & Regulatory Services

9. Slow Speed Neighbourhoods Avondale

Reference Te Tohutoro:	22/114665
Report of Te Pou Matua:	Gemma Dioni Senior Transport Engineer gemma.dioni@ccc.govt.nz
General Manager Pouwhakarae:	Jane Davis, General Manager Infrastructure, Planning and Regulatory Services jane.davis@ccc.govt.nz

1. Purpose of the Report Te Pūtaka Pūrongo

- 1.1 The purpose of this report is for the Waitai Coastal-Burwood Community Board to consider the consultation feedback and views on the proposed speed limit changes for the Slow Speed Neighbourhood in Avondale, and to make a recommendation to the Council.
- 1.2 The decisions in this report are of low significance in relation to the Christchurch City Council's Significance and Engagement Policy. The level of significance was determined by the low level of impact and low number of people affected by the recommended decision.
- 1.3 The community engagement and consultation outlined in this report reflect the assessment.
- 1.4 The recommended option is to reduce the speed limits from 50 kilometre per hour to 40 kilometres per hour in accordance with **Attachment A**.

2. Officer Recommendations Ngā Tūtohu

That the Waitai Coastal-Burwood Community Board recommends that the Council:

1. Approves, pursuant to Part 4 Clause 27 of the Christchurch City Council Traffic and Parking Bylaw 2017 and Land Transport Rule: Setting of Speed Limits 2017, that the speed limits on the following roads be revoked and set generally as identified in Attachment A to the staff report and listed below in clauses 1a-1nn (including resultant changes made to the Christchurch City Council Register of Speed Limits and associated Speed Limit Maps).
 - a. Revoke the existing permanent speed limit of 50 kilometres per hour on Baladin Street (entire length).
 - b. Approve that the permanent speed limit on Baladin Street (entire length) be set at 40 kilometres per hour.
 - c. Revoke the existing permanent speed limit of 50 kilometres per hour on Belmont Street (entire length).
 - d. Approve that the permanent speed limit on Belmont Street (entire length) be set at 40 kilometres per hour.
 - e. Revoke the existing permanent speed limit of 50 kilometres per hour on Besant Place (entire length).
 - f. Approve that the permanent speed limit on Besant Place (entire length) be set at 40 kilometres per hour.
 - g. Revoke the existing permanent speed limit of 50 kilometres per hour on Binstead Place (entire length).
 - h. Approve that the permanent speed limit on Binstead Place (entire length) be set at 40 kilometres per hour.

- i. Revoke the existing permanent speed limit of 50 kilometres per hour on Briarmont Street (entire length).
- j. Approve that the permanent speed limit on Briarmont Street (entire length) be set at 40 kilometres per hour.
- k. Revoke the existing permanent speed limit of 50 kilometres per hour on Chardale Street (entire length).
- l. Approve that the permanent speed limit on Chardale Street (entire length) be set at 40 kilometres per hour.
- m. Revoke the existing permanent speed limit of 50 kilometres per hour on Colac Street (entire length).
- n. Approve that the permanent speed limit on Colac Street (entire length) be set at 40 kilometres per hour.
- o. Revoke the existing permanent speed limit of 50 kilometres per hour on Cowes Street (entire length).
- p. Approve that the permanent speed limit on Cowes Street (entire length) be set at 40 kilometres per hour.
- q. Revoke the existing permanent speed limit of 50 kilometres per hour on Cowper Place (entire length).
- r. Approve that the permanent speed limit on Cowper Place (entire length) be set at 40 kilometres per hour.
- s. Revoke the existing permanent speed limit of 50 kilometres per hour on De Courcy Place (entire length).
- t. Approve that the permanent speed limit on De Courcy Place (entire length) be set at 40 kilometres per hour.
- u. Revoke the existing permanent speed limit of 50 kilometres per hour on Doyle Place (entire length).
- v. Approve that the permanent speed limit on Doyle Place (entire length) be set at 40 kilometres per hour.
- w. Revoke the existing permanent speed limit of 50 kilometres per hour on Eglinton Street (entire length).
- x. Approve that the permanent speed limit on Eglinton Street (entire length) be set at 40 kilometres per hour.
- y. Revoke the existing permanent speed limit of 50 kilometres per hour on Glenrowan Avenue (entire length).
- z. Approve that the permanent speed limit on Glenrowan Avenue (entire length) be set at 40 kilometres per hour.
- aa. Revoke the existing permanent speed limit of 50 kilometres per hour on Hulverstone Drive commencing at its intersection with Chardale Street and extending in an easterly direction to its intersection with Briarmont Street.
- bb. Approve that the permanent speed limit on Hulverstone commencing at its intersection with Chardale Street and extending in an easterly direction to its intersection with Briarmont Street be set at 40 kilometres per hour.

- cc. Revoke the existing permanent speed limit of 50 kilometres per hour on Mervyn Drive commencing at its intersection with Avondale Road and extending in an easterly direction, to its intersection with Baladin Street.
- dd. Approve that the permanent speed limit on Mervyn Drive commencing at its intersection with Avondale Road and extending in an easterly direction, to its intersection with Baladin Street be set at 40 kilometres per hour.
- ee. Revoke the existing permanent speed limit of 50 kilometres per hour on Niven Street (entire length).
- ff. Approve that the permanent speed limit on Niven Street (entire length) be set at 40 kilometres per hour.
- gg. Revoke the existing permanent speed limit of 50 kilometres per hour on Orrick Crescent (entire length).
- hh. Approve that the permanent speed limit on Orrick Crescent (entire length) be set at 40 kilometres per hour.
- ii. Revoke the existing permanent speed limit of 50 kilometres per hour on Thorness Street (entire length).
- jj. Approve that the permanent speed limit on Thorness Street (entire length) be set at 40 kilometres per hour.
- kk. Revoke the existing permanent speed limit of 50 kilometres per hour on Waratah Street (entire length).
- ll. Approve that the permanent speed limit on Waratah Street (entire length) be set at 40 kilometres per hour.
- mm. Revoke the existing permanent speed limit of 50 kilometres per hour on Woolley Street (entire length).
- nn. Approve that the permanent speed limit on Woolley Street (entire length) be set at 40 kilometres per hour.
- 2. Approve that these resolutions take effect when the signage that evidence the restrictions described in the staff report are in place (or removed in the case of revocations).
- 3. Authorise staff to make any typographical changes or to correct minor errors or omissions in the above descriptions of the roads to which the speed limits apply (being changes that do not affect the materiality of the resolutions).

3. Reason for Report Recommendations Ngā Take mō te Whakatau

- 3.1 The preferred option is to change the speed limits as outlined in the staff recommendations in this report for the following reasons:
 - 3.1.1 Traffic speed data indicates that most road users in this area already recognise that the currently posted speed limit is not safe and appropriate for this area, and are travelling below this limit.
 - 3.1.2 Reduces the likelihood and severity of crashes and improves safety on local roads.
 - 3.1.3 Aligns with the overall vision of the Ministry of Transport/Te Manatū Waka New Zealand Road Safety Strategy - Road to Zero 2020-2030.
- 3.2 Achieves safe and appropriate speeds that reflect the road function, design, safety, and use for safer use by all. Local neighbourhood roads are low volume and low speed roads and are

where we would see more of our vulnerable road users such as school children, cyclists and pedestrians on the road and footpaths.

- 3.3 The Council determined through the Long Term Plan (LTP) to implement at least five slow speed neighbourhoods per year over the next three years. The Avondale Slow Speed Neighbourhood is identified as one of the five neighbourhoods.

4. Alternative Options Considered Ētahi atu Kōwhiringa

Maintain the status quo

- 4.1 Maintain the status quo – Retain the existing speed limits.
- 4.2 The advantages of this option include:
- 4.2.1 There are no identified benefits to road safety or consistency of speed limits from retaining the existing speed limits.
- 4.2.2 No further costs are incurred for providing or modifying speed limit signs.
- 4.3 The disadvantages of the option include:
- 4.3.1 Does not align with the objectives of the Waka Kotahi Speed Management Guide 2016.
- 4.3.2 Does not align with the overall vision of Road Safety Strategy- Road to Zero 2020-2030.
- 4.3.3 Does not align the posted speed limits with the operating speeds, the safe and appropriate speeds, and does not help improve the credibility and consistency across the network.
- 4.3.4 Does not deliver one of the five slow speed neighbourhoods this financial year as identified in the Long Term Plan.

5. Detail Te Whakamahuki

- 5.1 Improving safety on local roads in Christchurch is a priority for Council and is also a national priority under the principles and guidance of the Road to Zero - New Zealand's road safety strategy for 2020-2030. Road to Zero sets an initial target to reduce deaths and serious injuries on New Zealand's roads, streets, cycleways, and footpaths by 40 percent over the next 10 years. There are several focus areas being looked at nationally to achieve this, but where significant difference can be made is through having safe and appropriate speeds on Christchurch's roads.
- 5.2 It is proposed to reduce the speed limit from 50 kilometres per hour to 40 kilometres per hour on selected streets in Avondale.
- 5.3 There have been 11 reported crashes (4 minor injury and 7 non-injury) in this area over the 5-year period 2016-2020 (including available 2021 data).
- 5.4 The Council count data indicates that the majority of road users already recognise that the currently posted speed limit is not safe and appropriate for this area, and are travelling well below this limit. Implementing a lower speed limit will help to reinforce this safer driving behaviour, and help those unfamiliar with the area understand the safe and appropriate speed. Research suggests that, in some environments, changing speed limit signage alone (without complimentary engineering treatments) may result in a 2 to 3 km/h reduction in operating speeds. Installation of new speed limit signage in this area may also therefore result in a slight reduction in operating speeds.

- 5.5 Neighbourhoods are areas where we can make the most difference with slower speeds to improve safety for vulnerable road users, because everyone should get where they're going safely whether they're walking, cycling, driving, motorcycling, or using public transport.
- 5.6 The proposed slower speeds will also assist in improving pedestrian connectivity through the neighbourhood by making it safer for people to cross to get where they are going.
- 5.7 The slow neighbourhood speed limit has been determined based on several speed management principles. The fundamental principle is that speed affects the severity of all crashes. Even when speed doesn't cause the crash, it's what will most likely determine whether anyone is killed, injured, or walks away unharmed from that crash.
- 5.8 The local road network bound by Avondale Road, Breezes Road, Wainoni Road and the Avon River, has a history of community complaints and requests for service related to speed and anti-social road user issues.
- 5.9 Approval is required by the Council. If approved, the recommendations will be implemented within the next financial year (generally around 6-8 weeks after the Contractor receives the request).

Community Views and Preferences

- 5.10 Residents were encouraged to head online from 5 November to 5 December 2021 to have their say. A consultation summary is provided in **Attachment B**.
- 5.11 The consultation was advertised through a letter box flyer, [Newline story](#), social media posts on community Facebook pages, on-site signage and the online Have Your Say portal.
- 5.12 The Council received 62 submissions. The majority of submitters (56) were residents from Avondale with the remainder from outside the project area. One submitter did not provide an address. From those that submitted, 40% clearly supported the initiative and 23% clearly opposed. Feedback from the remaining 37% of submitters showed no clear indication for or against.
- 5.13 Although the majority of submitters did support the slow speeds for Avondale, there were concerns on how the speed limit would be enforced and there was a strong desire for traffic calming measures to be delivered as part of this project. This is due to the already high number of complaints regarding vehicles travelling at excessive speeds throughout this area. Key themes identified include:
 - The need for traffic calming measures (37%)
 - Legal enforcement (32%)
 - Signage is not enough (8%)
- 5.14 Although the majority of submitters supported the initiative, there was a general consensus that high number of 'boy racers' who currently use these roads to exceed the speed limit and undertake bad driver behaviour with 30 submitters (48%) mentioning concerns about this type of behaviour (*key words - boy racers, speedsters, motor heads, burnouts, donuts, skids, excessive speed*). Submitters who did not support the initiative believe the 'boy racers' are currently exceeding the speed limit and new signage will not be enough to deter this behaviour.
- 5.15 While out of scope for this project submitters commented on the option to install traffic calming measures such as speed humps, judder bars, speed cameras, planter boxes and new line marking to support the speed reduction.
- 5.16 Once a new speed is introduced in an area, Police will be notified and encouraged to educate and enforce with road users.

6. Policy Framework Implications Ngā Hīraunga ā- Kaupapa here

Strategic Alignment Te Rautaki Tīaroaro

- 6.1 The New Zealand Road Safety Strategy - Road to Zero: sets a target to reduce death and serious injuries on New Zealand roads by 40 percent over the next 10 years. There are five key focus areas: infrastructure improvements and speed management, vehicle safety, work related road safety, road user choices, and system management.
- 6.2 Waka Kotahi's Speed Management Guide 2016: setting safe and appropriate speeds, consistency and credibility of speed limits.
- 6.3 Land Transport Rule: Setting of Speed Limits 2017: requires that road controlling authorities must set speed limits that are safe and appropriate, and encourages a consistent approach to speed management throughout New Zealand.
- 6.4 The Council's strategic priorities have been considered in formulating the recommendations in this report, however this area of work is not specifically covered by an identified priority.
- 6.5 This report supports the [Council's Long Term Plan \(2021 - 2031\)](#):
 - 6.5.1 Activity: Transport
 - Level of Service: 10.0.6.1 Reduce the number of death and serious injury crashes on the local road network - ≤ 105 crashes.
 - Level of Service: 10.5.1 Limit deaths and serious injury crashes per capita for cyclists and pedestrians - ≤ 12 crashes per 100,000 residents.
 - Level of Service: 16.0.10 Maintain the perception that Christchurch is a walking friendly city - ≥85% resident satisfaction.
 - Level of Service: 10.0.2 Increase the share of non-car modes in daily trips - ≥17% of trips undertaken by non-car modes.
 - Level of Service: 10.5.2 Improve the perception that Christchurch is a cycling friendly city) - ≥65% resident satisfaction.
 - Level of Service: 10.5.3 More people are choosing to travel by cycling - ≥12,000 average daily cyclist detections.
 - Level of Service: 10.0.41 Reduce emissions and greenhouse gases related to transport - ≤1.10 million tonnes of CO2 equivalents.
 - 6.5.2 Capital Programme
 - \$250,000 capital expenditure per year for three years to implement at least five slow speed neighbourhoods a year.

Policy Consistency Te Whai Kaupapa here

- 6.6 The decisions in this report are consistent with Council's Plans and Policies.

Impact on Mana Whenua Ngā Whai Take Mana Whenua

- 6.7 The effects of this proposal upon Mana Whenua are expected to be insignificant.

Climate Change Impact Considerations Ngā Whai Whakaaro mā te Āhuarangi

- 6.8 This proposal includes measures to slow vehicle speeds and improve road safety. This could encourage people to use alternative modes to the private vehicle which will result in positive changes to reduce carbon emissions and the effects of Climate Change.

Accessibility Considerations Ngā Whai Whakaaro mā te Hunga Hauā

- 6.9 This proposal will result in vehicles travelling at reduced speeds, which will provide a safer and more accessible environment for all road users, including pedestrians and cyclists.

7. Resource Implications Ngā Hīraunga Rauemi

Capex/Opex Ngā Utu Whakahaere

- 7.1 Cost to Implement – approximately \$18,000.
7.2 Maintenance/Ongoing costs – approximately \$2,000/year.
7.3 Funding Source – Slow speed Neighbourhoods project 65987.

Other

- 7.4 None identified.

8. Legal Implications Ngā Hīraunga ā-Ture



Statutory power to undertake proposals in the report Te Manatū Whakahaere Kaupapa

- 8.1 Speed Limits must be set in accordance with the Land Transport Rule: Setting of Speed Limits 2017.
8.2 Clause 27 (Part 4) of the Christchurch City Council Traffic and Parking Bylaw 2017 provides the Council with the authority to set speed limits by resolution.

Other Legal Implications Ētahi atu Hīraunga-ā-Ture

- 8.3 There is a legal context, issue or implication relevant to this decision.
8.4 This specific report has not been reviewed and approved by the Legal Services Unit however the report has been written using a general approach previously approved of by the Legal Services Unit, and the recommendations are consistent with the policy and legislative framework outlined in sections 8.1 to 8.3.

Attachments Ngā Tāpirihanga

No.	Title	Page
A 	Slow Speed Neighbourhood - Avondale - For Approval Plan TG140757	29
B 	Consultation Summary - Slow Speed Neighbourhoods - Avondale	30

Additional background information may be noted in the below table:

Document Name	Location / File Link

Confirmation of Statutory Compliance Te Whakatūtutanga ā-Ture

Compliance with Statutory Decision-making Requirements (ss 76 - 81 Local Government Act 2002).

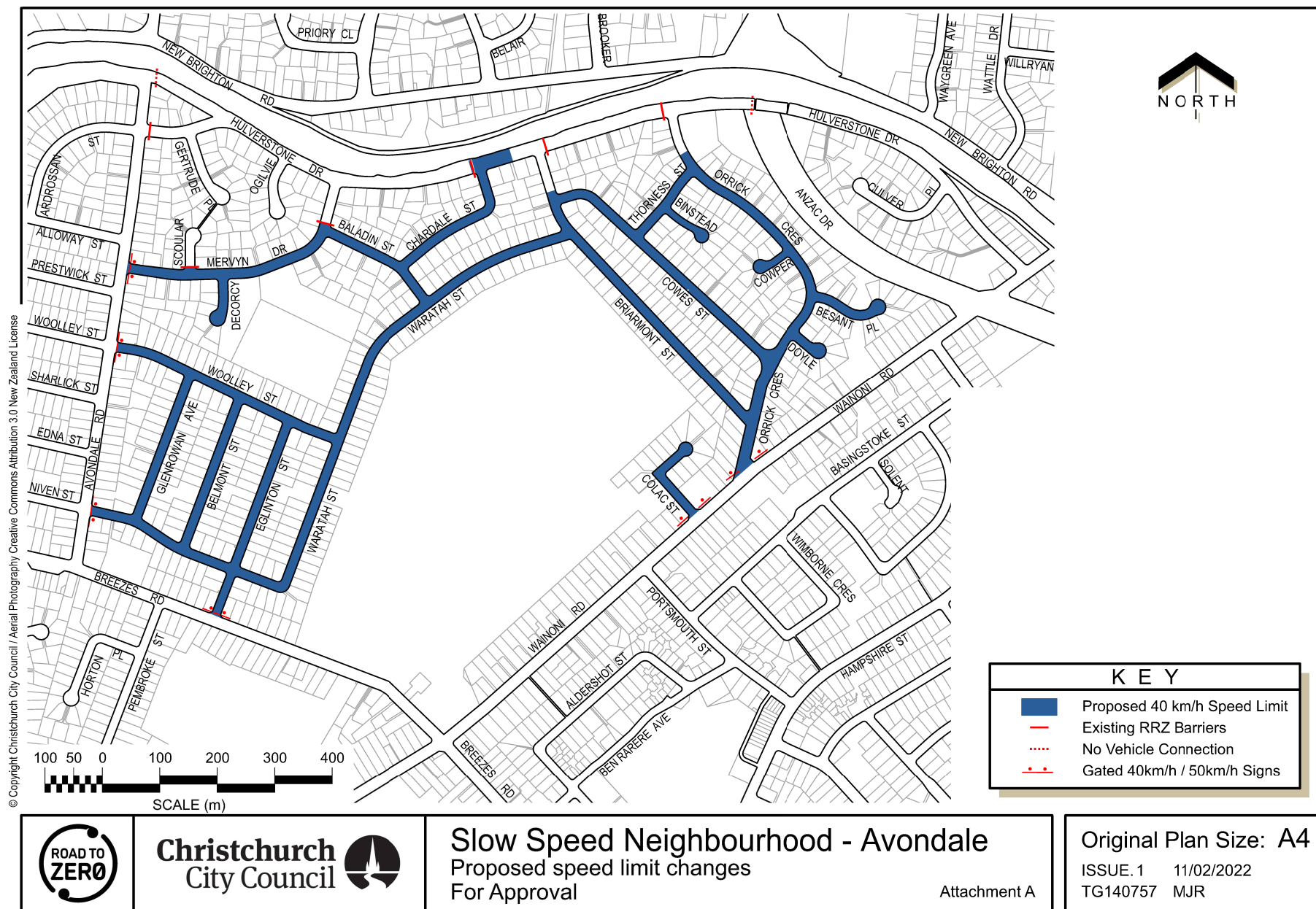
(a) This report contains:

- (i) sufficient information about all reasonably practicable options identified and assessed in terms of their advantages and disadvantages; and

- (ii) adequate consideration of the views and preferences of affected and interested persons bearing in mind any proposed or previous community engagement.
- (b) The information reflects the level of significance of the matters covered by the report, as determined in accordance with the Council's significance and engagement policy.

Signatories Ngā Kaiwaitohu

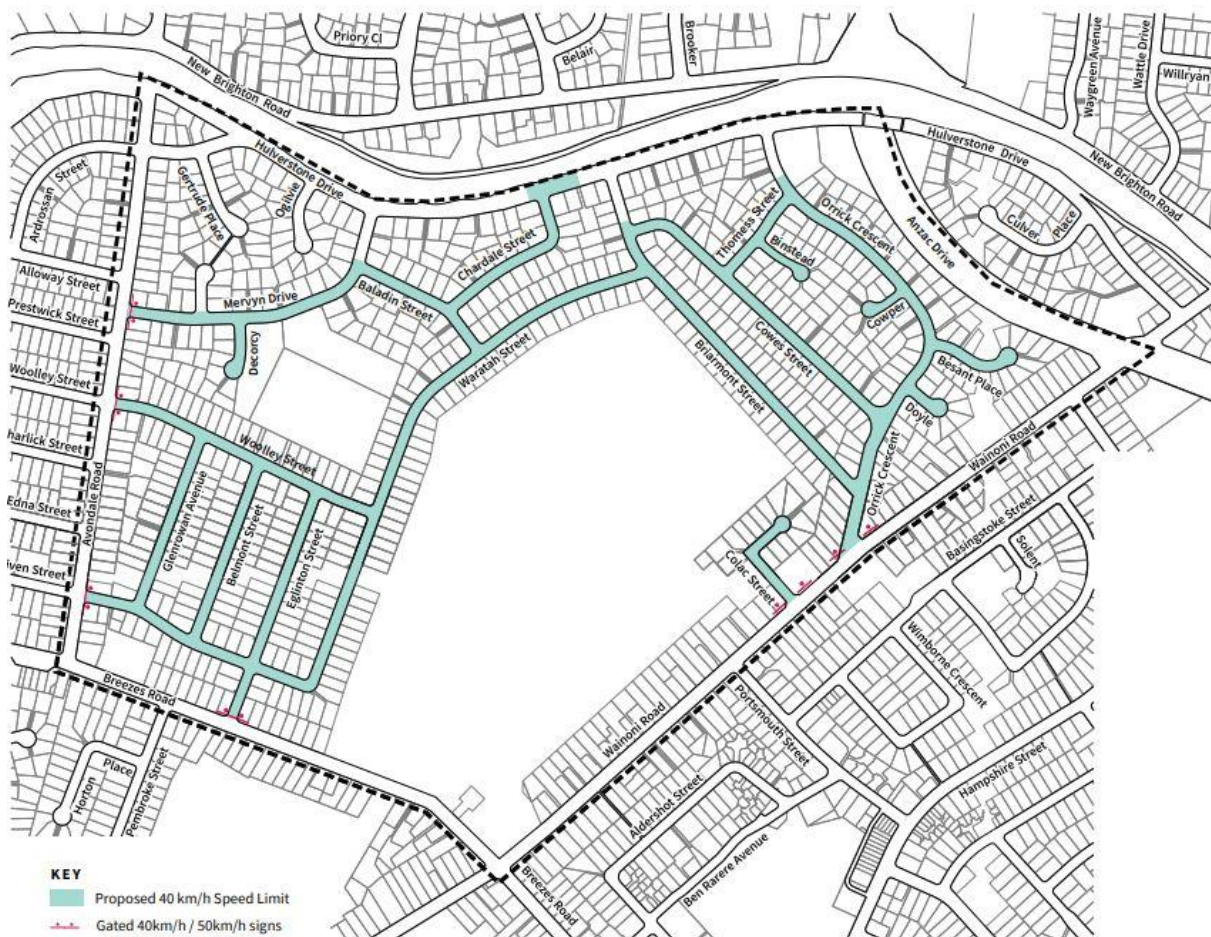
Authors	Gemma Dioni - Senior Transportation Engineer Hannah Ballantyne - Engagement Advisor
Approved By	Stephen Wright - Acting Manager Operations (Transport) Steffan Thomas - Head of Technical Services & Design Lynette Ellis - Head of Transport & Waste Management



Slow speeds – report - Avondale

Summary

The Slow Speeds Neighbourhood programme is focused on identifying areas around Christchurch where there is already community support about the speed limit. A priority tool has been developed to help determine where we should focus our budget. This tool uses a weighted matrix system to prioritise the suburbs based on three key criteria: Safety, Cost and Engagement response with sub categories including crash statistics, school numbers and wider project alignment opportunities. The roads shown below within Avondale have been identified as areas where a Slow Speed Neighbourhood would create a safer environment, scoring high in all three criteria of the priority tool.



It is proposed to reduce the speed limit from 50km/h to 40km/h on all roads bounded by Anzac Drive, Wainoni Road, Hulverstone Drive, Avondale Road and Breezes Road

We know there is already community support for this slower speed, however we are engaging with the local residents to understand if there was anything we need to know before implementing the speed reduction.

Residents were encouraged to head online from 5 November to 5 December 2021 to have their say.

The consultation was advertised through a letter box flyer, [Newsline story](#), social media posts on community Facebook pages, on-site signage and the online Have Your Say portal.

We received 62 submissions with 40% clearly supporting the initiative and 23% clearly opposed. Feedback from the remaining 37% of submitters showed no clear indication for or against.

Although the majority of submitters did support the slow speeds for Avondale, there were concerns on how the speed limit would be enforced and there was a strong desire for traffic calming measures to be delivered as part of this project. This is due to the already high number of complaints regarding vehicles travelling at excessive speeds throughout this area.

Key themes:

- the need for traffic calming measures
- legal enforcement
- signage is not enough.

Submitter profile

Consultation was open from 5 November to 5 December 2021 and we received 62 submissions.

The majority of submitters (56) were residents from Avondale with the remainder from outside the project area. One submitter did not provide an address.

The breakdown of submitter responses is as follows:

	Number of submitters	Percentage of submitters
Clear support	25	40%
Clearly oppose	14	23%
No clear support or opposition	23	37%

Although the majority of submitters supported the initiative, there was a general consensus that high number of 'boy racers' who currently use these roads to exceed the speed limit and undertake bad driver behaviour with 30 submitters (48%) mentioning concerns about this type of behaviour (*key words - boy racers, speedsters, motor heads, burnouts, donuts, skids, excessive speed*). Submitters who did not support the initiative believe the 'boy racers' are currently exceeding the speed limit and new signage will not be enough to deter this behaviour.

Although out of scope for this project submitters commented on the option to install traffic calming measures such as speed humps, judder bars, speed cameras, planter boxes and new line marking to support the speed reduction.

Consultation analysis

The key themes that arose during this consultation are:

- traffic calming measures
- legal enforcement
- signage is not enough

Key theme		Quotes from submitters
Traffic calming measures 23 submitters, 37%	Submitters would like to have traffic calming measures such as speed humps and judder bars in place on selected streets in Avondale.	<p><i>"I fully support the proposed speed reduction for parts of Avondale. I hope that the changes can be made soon and that they are accompanied by traffic calming measures as well, otherwise I don't believe that the behaviour of some will change at all."</i></p> <p><i>"Although you might not be able to install full traffic calming features straight away due to budget pressures, I'd suggest that you look at low-cost 'paint, planters & posts'"</i></p> <p><i>"What we need is judder bars"</i></p> <p><i>"I hope that the changes can be made soon and that they are accompanied by traffic calming measures as well, otherwise I don't believe that the behaviour of some will change at all"</i></p>
Need for legal reinforcement 20 submitters, 32%	Submitters would like to see legal reinforcement of this speed reduction. This involves increasing police surveillance and the installation of speed cameras.	<p><i>"Whilst a reduction in speed limit is welcome, how is it going to be policed when some people can't keep within the 50kph speed limit"</i></p> <p><i>"Signs do nothing without enforcement"</i></p> <p><i>"I and a few of my neighbours feel that there needs to be speed cameras, and higher visibility of policing in the area."</i></p>
Signage not enough 5 submitters, 8%	Submitters believe signs will not be enough to deter the unruly driver behaviour in Avondale.	<p><i>"Simply reducing the speed in the area, will not resolve the issue."</i></p> <p><i>"Maybe a Your Speed illuminated sign like Centaurs Rd Will batter the speed down"</i></p> <p><i>"I fail to understand how reducing the speed limit will have any effect? If the people who speed disregard the current speed limits they will disregard a lower one."</i></p>

Unfortunately traffic calming measures such as speed humps are not specifically funded in Council's Long Term Plan and are out of scope for this project. However, we will continue to monitor the roads once the slow speed zone is implemented and address as needed.

Once a new speed is introduced in an area, Police will be notified and encouraged to educate and enforce with road users.

Submitters will be notified once the full analysis has been completed and offered the opportunity to speak with the Community Board in 2022. This feedback along with any verbal submissions will help inform the Community Board to decide whether to introduce a Slow Speeds Neighbourhood for selected streets in Avondale.

10. Burwood Road Proposed No Stopping Restrictions

Reference Te Tohutoro: 22/80539

Report of Te Pou Matua: Wayne Anisy, Traffic Engineer
wayne.anisy@ccc.govt.nz

General Manager
Pouwhakarae: Jane Davis, General Manager Infrastructure, Planning and
Regulatory Services
jane.davis@ccc.govt.nz

1. Purpose of the Report Te Pūtake Pūrongo

- 1.1 The purpose of this report is for the Waitai Coastal-Burwood Community Board to consider approval of No Stopping areas on Burwood Road as shown on **Attachment A**. This report has been written following safety concerns raised by the community, including Waitakiri School representatives.
- 1.2 The decisions in this report are of low significance in relation to the Christchurch City Council's Significance and Engagement Policy. The level of significance was determined by the low level of impact and low number of people affected by the recommended decision.
- 1.3 The community engagement and consultation outlined in this report reflect the assessment.
- 1.4 The recommended option is to Install No Stopping restrictions in accordance with Attachment A. The length of No Stopping in this option is the minimum length needed to provide Minimum Gap Sight Distance, allowing a driver entering the intersection sufficient visibility of approaching traffic to make the desired turn safely.

2. Officer Recommendations Ngā Tūtohu

That the Waitai Coastal-Burwood Community Board:

1. Approves, pursuant to Clause 7 of the Christchurch City Council Traffic and Parking Bylaw 2017, that the stopping of vehicles be prohibited at any time on the west side of Burwood Road commencing at a point 221 metres south from its intersection with Newhaven Street and extending in a southerly direction for a distance of 18 metres.
2. Approves, pursuant to Clause 7 of the Christchurch City Council Traffic and Parking Bylaw 2017, that the stopping of vehicles be prohibited at any time on the east side of Burwood Road commencing at its intersection with Clarevale Street and extending in a northerly direction for a distance of 30 metres.
3. Revokes any previous resolutions pertaining to traffic controls made pursuant to any bylaw to the extent that they are in conflict with the traffic controls described in resolutions 1 and 2 above.
4. Approves that these resolutions take effect when there is evidence that the road marking restrictions described in the staff report are in place (or removed in the case of revocations).

3. Reason for Report Recommendations Ngā Take mō te Whakatau

- 3.1 Safety concerns have been identified/raised at the Clare Park/Burwood Road entranceway and at the intersection of Burwood Road and Clarevale Street due to restricted visibility caused by on street parking close to the entranceway and intersection. Implementing the

proposed recommendations will lead to a reduction in the risk of a crash by improving sightlines.

- 3.2 The recommendations in this report will help to achieve the desired community outcome of a well-connected and accessible city through improved road safety.
- 3.3 Install No Stopping restrictions in accordance with Attachment A. The length of No Stopping in this option is the minimum length needed to provide Minimum Gap Sight Distance, allowing a driver entering the intersection sufficient visibility of approaching traffic to make the desired turn safely.
- 3.4 Options within this report have been assessed against relevant industry-standard design guidance including the sight distance requirements of the Council's Infrastructure Design Standard.

4. Alternative Options Considered Ētahi atu Kōwhiringa

- 4.1 Maintain the status quo.
- 4.2 The advantages of this option include:
 - 4.2.1 Retaining six on-street parking spaces.
- 4.3 The disadvantages of the option include:
 - 4.3.1 Does not address the community concerns for improved visibility at the two locations identified.

5. Detail Te Whakamahuki

- 5.1 The Council has received requests from the community and Waitakiri School representatives to review the safety issues being experienced on Burwood Road. Currently there are visibility issues at peak times when vehicles are exiting the Clare Park entranceway (West side), and the Clarevale Street intersection (East side). The proposal is to remove two parking spaces on the west side of Burwood Road and three parking spaces on the east side of Burwood Road and replace with No Stopping lines which are based on intersection sight distance guidelines. Site investigations have shown that outside of peak times, there are sufficient nearby parking areas available to accommodate for the displacement of these parking spaces.
- 5.2 Approval is required by the Waitai Coastal-Burwood Community Board.
- 5.3 If approved, the recommendations will be implemented within the current financial year (generally around four weeks after the contractor receives the request, but this is subject to other factors such as resourcing and prioritisation beyond the Council's control).
- 5.4 As part of the staff investigations, further safety interventions have been carried out within the Clare Park entranceway which include the installation of a speed hump, pedestrian signage and associated No Stopping and centre line markings.

Community Views and Preferences

- 5.5 Consultation was held from Wednesday 12 January to Friday 28 January 2022. A total of 11 consultation documents were delivered to all affected property owners/residents and posted to any absentee owners.
- 5.6 There were three submissions received back. Two were in full support and one submitter supported the proposal however not the length of the proposed No Stopping areas. In the submission it was stated that parking demand was already high in the area and the submitter would prefer one parking space on each side removed. The submitter was advised that the

length of No Stopping proposed in the consultation document was the minimum length needed to provide Minimum Gap Sight Distance.

- 5.7 Based on the submissions received, the proposed consultation plan remains unchanged and forms the approval plan (Attachment A). All submitters will be notified of the meeting details if they wish to obtain speaking rights.
- 5.8 The Team Leader Parking Compliance supports the preferred option.
- 5.9 The alternative option is inconsistent with community requests to improve visibility at the intersection.

6. Policy Framework Implications Ngā Hīraunga ā- Kaupapa here

Strategic Alignment Te Rautaki Tīaroaro

- 6.1 The Council's strategic priorities have been considered in formulating the recommendations in this report, however this area of work is not specifically covered by an identified priority.
- 6.2 This report supports the [Council's Long Term Plan \(2021 - 2031\)](#):
 - 6.2.1 Activity: Transport
 - Level of Service: 10.0.6.1 Reduce the number of death and serious injury crashes on the local road network - ≤ 105 crashes

Policy Consistency Te Whai Kaupapa here

- 6.3 The recommendations in this report are consistent with the [Christchurch Suburban Parking Policy](#).

Impact on Mana Whenua Ngā Whai Take Mana Whenua

- 6.4 The effects of this proposal upon Mana Whenua are expected to be insignificant.

Climate Change Impact Considerations Ngā Whai Whakaaro mā te Āhuarangi

- 6.5 This proposal does not have any significant effect upon carbon emissions and Climate Change.

Accessibility Considerations Ngā Whai Whakaaro mā te Hunga Hauā

- 6.6 This proposal improves accessibility for all road users, by providing a safer means of accessing the identified intersection and entranceway.

7. Resource Implications Ngā Hīraunga Rauemi

Capex/Opex Ngā Utu Whakahaere

- 7.1 Cost to Implement – Approx. \$500 which includes the removal of existing parking ticks.
- 7.2 Maintenance/Ongoing costs - Will be covered under the area maintenance contract and effect will be minimal to the overall asset.
- 7.3 Funding Source - "Traffic Operations Lines and Signs" budget.

8. Legal Implications Ngā Hīraunga ā-Ture

Statutory power to undertake proposals in the report Te Manatū Whakahaere Kaupapa

- 8.1 Part 1, Clauses 7 and 8 of the Christchurch City Council Traffic and Parking Bylaw 2017 provides the Council with the authority to install parking restrictions by resolution.

- 8.2 Community Boards have delegated authority from the Council to exercise the delegations as set out in the Register of Delegations. The list of delegations for the Community Boards includes the resolution of stopping restrictions and traffic control devices.
- 8.3 The installation of any signs and/or markings associated with traffic control devices must comply with the Land Transport Rule: Traffic Control Devices 2004.


Other Legal Implications Ētahi atu Hīraunga-ā-Ture

- 8.4 There is a legal context, issue or implication relevant to this decision.
- 8.5 This specific report has not been reviewed and approved by the Legal Services Unit however the report has been written using a general approach previously approved of by the Legal Services Unit, and the recommendations are consistent with the policy and legislative framework outlined in sections 8.1 to 8.3.

9. Risk Management Implications Ngā Hīraunga Tūraru

- 9.1 None identified.

Attachments Ngā Tāpirihanga

No.	Title	Page
A 	Burwood Road No Stopping Plan for Board Report	39

Additional background information may be noted in the below table:

Document Name	Location / File Link

Confirmation of Statutory Compliance Te Whakatūtutanga ā-Ture

Compliance with Statutory Decision-making Requirements (ss 76 - 81 Local Government Act 2002).

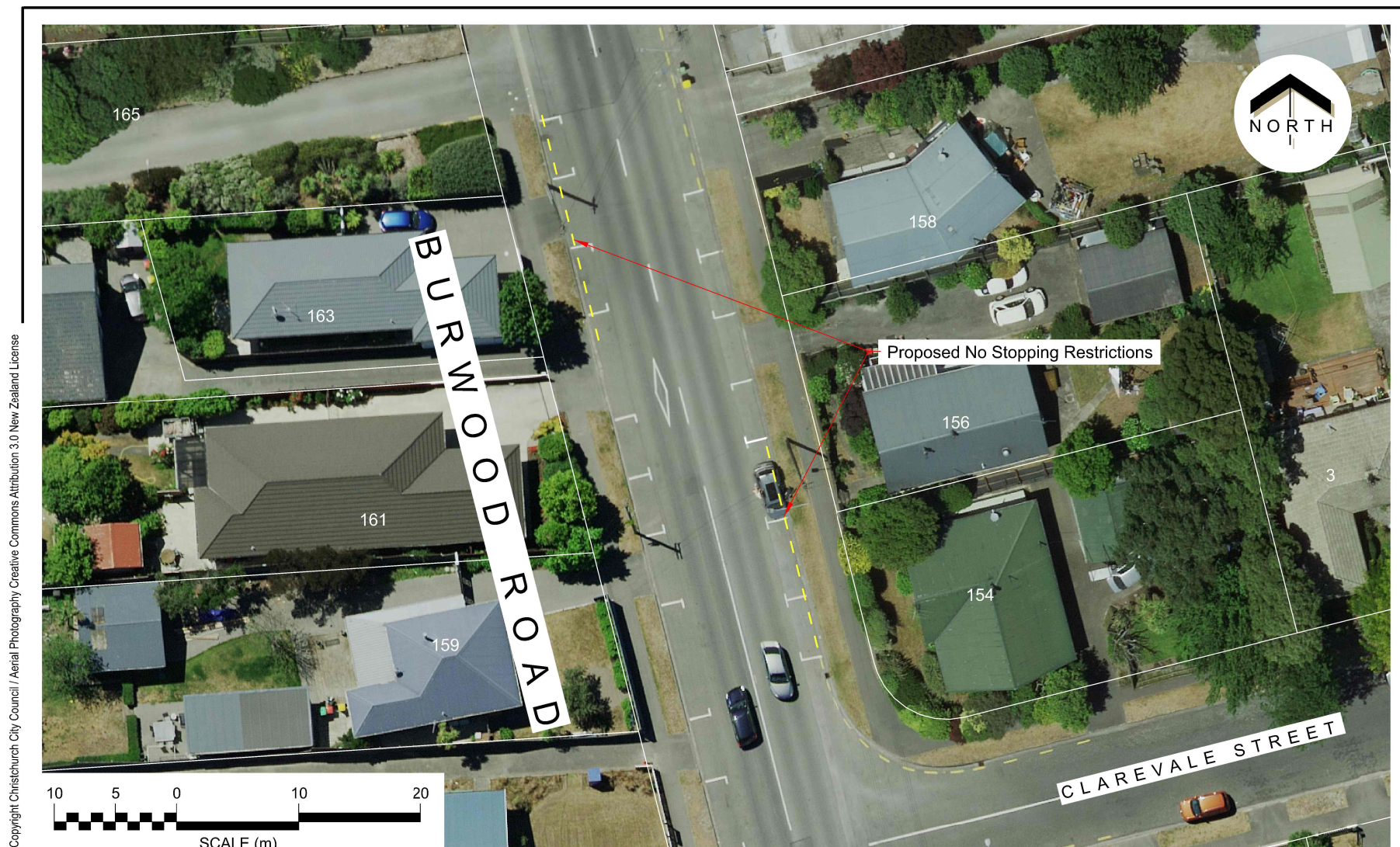
(a) This report contains:

- (i) sufficient information about all reasonably practicable options identified and assessed in terms of their advantages and disadvantages; and
- (ii) adequate consideration of the views and preferences of affected and interested persons bearing in mind any proposed or previous community engagement.

(b) The information reflects the level of significance of the matters covered by the report, as determined in accordance with the Council's significance and engagement policy.

Signatories Ngā Kaiwaitohu

Author	Wayne Anisy - Traffic Engineer
Approved By	Stephen Wright - Team Leader Traffic Operations Steffan Thomas - Manager Operations (Transport) Lynette Ellis - Head of Transport & Waste Management



Christchurch
City Council

Burwood Road
Proposed No Stopping Restrictions
For Board Approval

Attachment A

Original Plan Size: A4

ISSUE.1 08/03/2022
TG140763 MJR

11. Waitai Coastal-Burwood Community Board - Meeting Schedule 2022

Reference Te Tohutoro:	22/191481
Report of Te Pou Matua:	Cindy Sheppard, Community Board Advisor cindy.sheppard@ccc.govt.nz
General Manager Pouwhakarae:	Mary Richardson, General Manager Citizens and Community mary.richardson@ccc.govt.nz

1. Purpose of the Report Te Pūtake Pūrongo

- 1.1 The purpose of this report is for the Waitai Coastal-Burwood Community Board to amend its ordinary meeting arrangements for the period 14 February 2022 to 12 September 2022.
- 1.2 This report has been prepared at the request of the Community Board to enable the Board to consider amending the start times of their formal meetings to 5pm.
- 1.3 The Board can review these arrangements during 2022 should it wish to do so.
- 1.4 The decisions in this report is of low significance in relation to the Christchurch City Council's Significance and Engagement Policy.

2. Officer Recommendations Ngā Tūtohu

That the Waitai Coastal-Burwood Community Board:

1. Amend the schedule of Ordinary Meetings in 2022 to the following:

Date	Time	Location
Monday 11 April 2022	5pm	Board Room, corner Union and Beresford Streets, New Brighton
Monday 16 May 2022	5pm	Board Room, corner Union and Beresford Streets, New Brighton
Monday 13 June 2022	5pm	Board Room, corner Union and Beresford Streets, New Brighton
Monday 18 July 2022	5pm	Board Room, corner Union and Beresford Streets, New Brighton
Monday 15 August 2022	5pm	Board Room, corner Union and Beresford Streets, New Brighton
Monday 12 September 2022	5pm	Board Room, corner Union and Beresford Streets, New Brighton

2. Note the holding of Board briefings will take place prior to formal Board meetings and on the following dates:

Date	Time	Location
Monday 28 March 2022	3pm	Board Room, corner Union and Beresford Streets, New Brighton
Monday 2 May 2022	3pm	Board Room, corner Union and Beresford Streets, New Brighton

Monday 30 May 2022	3pm	Board Room, corner Union and Beresford Streets, New Brighton
Monday 4 July 2022	3pm	Board Room, corner Union and Beresford Streets, New Brighton
Monday 1 August 2022	3pm	Board Room, corner Union and Beresford Streets, New Brighton
Monday 29 August 2022	3pm	Board Room, corner Union and Beresford Streets, New Brighton

3. Reason for Report Recommendations Ngā Take mō te Whakatau

- 3.1 This report has been prepared at the request of the Community Board to enable the Board to consider amending the start times of their formal meetings to 5pm.

4. Context/Background Te Horopaki

- 4.1 In order that the business of the Board can be conducted in an orderly manner, and to allow for public notification of meetings to be given in compliance with the Local Government Official Information and meetings Act 1987 (LGOIMA), it is recommended that the Board adopt a schedule of meetings as per the Officer Recommendation.
- 4.2 It is recognised that events may arise, or circumstances change that would mean the schedule may need to be revised or additional meetings added. Any additional meetings will be appropriately publicly notified in compliance with the LGOIMA and Local Government Act 2020.
- 4.3 It is noted that holding an ordinary meeting each calendar month allows for all items of business to be progressed on a regular basis. The minutes of the Board meeting will be confirmed at the following Board meeting with any matters requiring a Council decision then referred on to the next appropriate Council meeting.
- 4.4 It is proposed that Board meetings be held on Mondays at 5pm on the third Monday of each calendar month. In addition to the decision making Board meetings, briefings or workshops will be scheduled prior to the commencement of meetings or at other times as required to provide an opportunity for Board members and staff to receive information and have an informal discussion on issues where no decision is required at the time.

Attachments Ngā Tāpirihanga

There are no attachments for this report.

Additional background information may be noted in the below table:

Document Name	Location / File Link

Confirmation of Statutory Compliance Te Whakatūturutanga ā-Ture

Compliance with Statutory Decision-making Requirements (ss 76 - 81 Local Government Act 2002).

- (a) This report contains:
- (i) sufficient information about all reasonably practicable options identified and assessed in terms of their advantages and disadvantages; and
 - (ii) adequate consideration of the views and preferences of affected and interested persons bearing in mind any proposed or previous community engagement.
- (b) The information reflects the level of significance of the matters covered by the report, as determined in accordance with the Council's significance and engagement policy.

Signatories Ngā Kaiwaitohu

Author	Cindy Sheppard - Community Board Advisor
Approved By	Christopher Turner-Bullock - Manager Community Governance, Coastal-Burwood

12. Waitai Coastal-Burwood Community Board Area Report - March 2022

Reference Te Tohutoro:	22/155521
Report of Te Pou Matua:	Christopher Turner-Bullock, Community Governance Manager Christopher.turner@ccc.govt.nz
General Manager Pouwhakarae:	Mary Richardson, General Manager Citizens and Community mary.richardson@ccc.govt.nz

1. Purpose of Report Te Pūtake Pūrongo

This report provides the Board with an overview on initiatives and issues current within the Community Board area.

2. Officer Recommendations Ngā Tūtohu

That the Waitai Coastal-Burwood Community Board:

1. Receive the Waitai Coastal-Burwood Community Board Area Report for March 2022.

3. Community Support, Governance and Partnership Activity

3.1 Community Governance Projects

Activity	Detail	Timeline	Strategic Alignment
Disc Golf Course at Ascot/QEII Park	The Christchurch Disc Golf Association are working towards the installation of the 18 basket course at QEII Park, the group received a grant of \$10,071 from the Board's 2020-21 Discretionary Response Fund, the total project costs are \$36,000. They received further funding from Rata Foundation in late 2021 and have a further \$8,000 to raise before installation can begin. They estimate the timeframe for this as May 2022.	Ongoing	Resilient Communities
Parklands/Queenspark	Staff have meet with a representative from the Parklands/Queenspark community to discuss installation of additional park furniture (picnic tables) in specific parks to encourage and allow communities to enjoy these spaces, examples given were the Parklands Reserve and Queenspark Reserve. Staff will continue to work	Ongoing	Resilient Communities

	with the community to assess the need, liaise with the Parks Unit and provide advice.		
Bottle Lake Forest ParkRun Pilot	Due to the Covid red light setting all ParkRuns within New Zealand are on hold and will begin again at the orange light setting. The launch of the pilot Parkrun at Bottle Forest will be confirmed as soon as the necessary resources have been secured.	Ongoing	Resilient Communities
Ascot Petanque Club based at Ascot Hub	Staff recently met with a representative from the Club to discuss the Clubs current financial situation and opportunities for support from the Council. The Club has been operating from Ascot Hub for 20+ years on Tuesdays and Fridays from 9.30am to 11.30am. They have 40 current members and welcome new members. They have provided positive feedback regarding the recent replacement of the Ascot Hub patio area.	Ongoing	Resilient Communities
Health Coaches and Health Improvement Practitioner's	<p>In January 2022, staff met with the new Health Improvement Coach based at New Brighton Healthcare.</p> <p>This role is part of a new project Te Tumu Waioira - Te Reo for to head towards wellness - is a new way of delivering wellbeing, mental health and addictions support through general practice.</p> <p>The model puts mental health and wellbeing at the heart of general practice with focused roles, Health Improvement Practitioners and Health Coaches, working as part of the general practice team. This model allows for a 'warm handover' which means that a GP or nurse in the general practice can offer someone who is experiencing mental distress or addiction issues the option of seeing the HIP in the same location quickly – often immediately.</p>	Ongoing	Resilient Communities

	The HIPs and Health Coaches provide advice and support based on individualised goals, promoting self-management and work closely with local community NGO support workers to ensure people can access the full range of help they need.		
Support the community-led action plan for Brooklands	<p>A specific Brooklands e-mailbox has been set up for correspondence and the first of a regular e-update was sent out on 11 February 2022 from this address to the mailing list.</p> <p>The e-update is intended to go out every few weeks or as updates arise. Staff will provide details on any scheduled work or new initiatives for the area so that residents are more informed on what is happening in their area, can offer feedback and better engage with staff working in the area.</p> <p>Drop-in sessions were held on 15 and 22 February 2022 at Brooklands Domain and were attended by 7 different residents (5 at each session). A range of subjects were discussed including drainage and flooding issues, safety concerns associated with car racing and burn-outs and suggestions on some initiatives to improve local amenities.</p> <p>The sessions will continue to be held weekly every Tuesday from 10.30am whilst staff continue to build relationships within the community. The aim of the sessions is to meet, listen to participants and gain a thorough understanding of the issues the community face and their aspirations for the future.</p>	Ongoing	Resilient Communities
Te Tira Kāhikuhiku	A group have been asked to continue in their current role and format for a further 6 months. This	Ongoing	Resilient Communities

	<p>was approved at Council on 10 February 2022.</p> <p>The first Te Tira Kāhikuhiku meeting was held on the 22 February with a number of LINZ Temporary Land Use agreements extended for a further 6 months or until the land transfers to the Council.</p> <p>An extension was approved for Life In Vacant Spaces for the Avondale Community Garden. In neighbouring wards projects approved for a 6 month extension include Ao Tawhiti – Climate Action Campus, Avon Ōtākaro Network in Avon Loop – Child-Led project, and the Eden Project.</p> <p>The first application to the Council using Christchurch City Council Policy regarding use of Residential Red Zone land (implemented in September 2020) was approved for a lease to Paul Cragg for a community berry garden for the Sumner Community on three sections on Richmond Hill Road, Sumner.</p>		
Ōtākaro Avon River Corridor Projects	<p>The Avondale Bridge will be opened to the public with a small ceremony on Friday 4 March 2022.</p> <p>The Dallington Landing will have a small opening ceremony on the 12 March although the facility will be open for use from early March.</p>	Ongoing	Resilient Communities

3.2 Community Funding Summary

3.2.1 For the Board's information, a summary is provided (refer **Attachment A**) on the status of the Board's 2021-22 funding as at 15 February 2022.

3.3 Participation in and Contribution to Decision Making

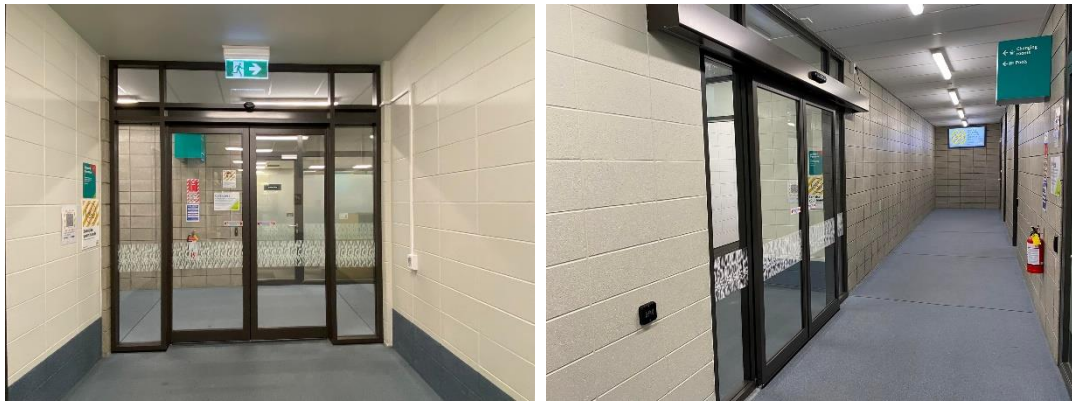
3.3.1 Report back on other Activities contributing to Community Board Plan [for items not included in the above table but are included in Community Board Plan]

- **Community Board Plan**

An update on the status of the Community Board Plan Priorities is attached (refer **Attachment B**).

- **Taiora QEII – New Automatic Door**

As part of the Community Board Plan priority to improve disability access at Taiora QEII the Community Board raised the issue of cold draughts impacting on users of the facility. During the planned closure of the facility staff took the opportunity to install an automatic door between the pool change rooms and the reception, in order to help cut down on any draughts coming from reception through to the pool.



3.3.2 Ascot Hub/Community Centre

The Ascot Hub which is managed by Eastern Community Sport and Recreation had some work done recently to the patio for health and safety reasons. The space is now bigger, flows freely between the building, carpark and petanque courts with improved ramp access. Outdoor lighting was installed around the patio area and landscaping improvements were made. These improvements will certainly ensure safe use of the space for current regular users and will make the Ascot Hub a more attractive option for one off venue hire.



3.3.3 Brooklands Site Visit

At the first drop-in session held on the 15 February 2022, residents highlighted to staff several sites that were particularly prone to regular flooding. Heavy rain had flooded the eastern end of Earlham Street where water was flowing across the road, cutting off access to a driveway and flooding a vacant property where the water had been laying stagnant for over a week. A local neighbour has been helping the other residents deal with the water, donating their own water pump and activating it each morning which has helped to keep residents driveways accessible to vehicles. Beacon Street was also flooded at the time of the site visit. Brooklands Domain, the location chosen to meet for the initial drop-in session was inaccessible at the time and so had to be reviewed as a meeting point.



To address the issue of car burn-outs, gabions basket have been installed by Parks staff at the end of Harbour Road and also at the southern end of the informal carpark at the former Blue Lagoon Restaurant site. It is hoped that this will deter cars from being driven on to and damaging the sand dunes and lagoon shore. Other spots for the gabions have been identified which aim to help mitigate the car racing and burn-outs

that occur frequently in the area and have been reported by residents as making them feel very unsafe.



3.3.4 Eastern Community Sport and Recreation Update

Back up and running in Term 1 with our in school delivery at South New Brighton, New Brighton Catholic and Rawhiti School.

Offering management support and activation for Pukeko Centre. 4 sessions in February covering different sports but community slow to engage, covid is a big issue and tamariki are being kept at home and not going out.

Avon Hub is coming online in mid-March, which will be a community based sport facility in the Papanui-Innes Ward.

Eastern/Rawhiti Domain Canopy

- Weekly drop-in Basketball sessions on Tuesdays 3.30pm to 4.30pm as a collaboration with Youth Alive Trust and New Zealand Police Youth Aid section. Free to attend. There is a core group of Year 10s from Shirley Boys High School also coming in to play in the afternoons.
- Fortnightly Friday Street Football 3pm to 5pm collaboration with Esperanca Football Academy with free kai.
- Futsal leagues running on Monday and Friday nights.
- Cricket training across the week during the evening and juniors 4pm to 6pm twice weekly.
- Casual hires over the balance of time covering all sporting codes, tennis courts popular when weather is wet.
- Astro Tennis court open for public use and being well maintained with regular grooming.
- Summer netball league put on hold due to Covid-19 as there was uncertainty around paying into league, was very successful in Term 4 2021. (Image below).
- Eastern Active Mornings and Afternoons run in the January holidays, will repeat again in school holidays throughout the year. Taster sessions of 90 minutes

covering different sports so using different motor/fundamental skills. Low cost at \$4 per session.

- New users: Canterbury Deaf Cricket and Wheelchair Rugby are now using the facility.
- Have offered several groups low cost or zero cost to enable them to use the Canopy – ACTIS Kids and Dads Day, New Brighton Catholic School celebration day and Netball Teachers v Year 8s, Te Ora Hou team building day.



Rawhiti Domain/Thomson Park

- Senior Touch module finals 24 February 2022 – has run well with cooperation from players with moves in the covid-19 settings. Junior Touch module runs through on Monday afternoons until 29 March 2022.
- Thanks for the irrigation on the lower fields and they look great for the upcoming rugby season. No1 ground grass has struck really well and growing well. Likely it will be planned on later in the season.
- Pre-season training underway for Senior teams on Thomson Park which has the lights installed and also looking in good shape with the irrigation upgrades.

Softball Diamond at Rawhiti Domain

- These are largely completed just awaiting perimeter fencing and soft nets to be installed. PCU Softball have started to use, junior practice image attached.



Ascot Hub

- Great feedback received on the patio upgrade but we are really keen to see the handrails installed as the older users don't want any falls onsite. All user groups are still using the Hub and happy to keep meeting and socialising. ECSR are supporting the clubs/groups with promotion of their activity and membership drive.

3.3.5 Beach Wheelchairs and Access Mat

A project led by the North Beach Residents' Association with support from the North Beach Surf Life Saving Club and the Council. The Council approved funding towards a storage container from the Metropolitan Discretionary Response Fund in November 2021. The storage container was moved onsite at North Beach Surf Club adjacent to the new mobility parking on 23 February 2022. The project was delayed due to a shortage of 10ft storage containers. The next phase of the project is to install signage on the container and kick off a promotional drive.



3.3.6 Community Events Update

- **Ray White Duke Festival of Surfing 2022**

The planning group have made the tough decision to cancel the 2022 Festival. This was announced publicly on the Festival Facebook page on 14 February 2022.

“With only 6ish weeks till the festival date, all of these COVID19 restrictions in place and the uncertainty around when and how bad Omicron will affect our community, we just wouldn’t be able to hold a community event to it’s full potential. The festival is about the spirit of Aloha and Aroha and so holding a capped event with so many restrictions not only doesn’t feel right but also decreases capacity of support for each event involved.

We did consider postponement, however this festival relies heavily on sponsorship, public support and voluntary hours. Had we postponed till later in the year, we would feel that we were asking too much of our sponsors and too much of our

organisers to do a Duke festival later in the year and then another festival next March as this festival is a mammoth job for our team.

FINALLY, The good news!!! We are looking to organise a small and local event as a celebration for Duke Kahanamoku's birthday in August instead and will be looking into hosting some virtual competitions and events so keep an eye on our social media for that".

The Festival received a grant of \$3,500 from the 2021-22 Waitai Coastal-Burwood Strengthening Communities Fund towards the Duke Festival of Surfing surf lessons and skate competition. They are liaising with the schools to confirm if they still want to go ahead with the surf lesson component.

- **2022 TSB Surf Lifesaving Championships**

Unfortunately due to the escalating COVID situation around the country the 2022 TSB Surf Lifesaving Championships scheduled for 10 to 13 March 2022 at New Brighton beach has now been cancelled. The organisers want to bring the event back to New Brighton in 2023 or 2024. They have indicated coming to Christchurch is still a priority.



- **ANZAC Parade**

The New Brighton RSA with deep regret, confirms the cancellation of the public Anzac events due to COVID regulations and civic responsibility to the citizens of New Brighton and the wider community.

- **Walking Festival 2022**

The Walking Festival in its normal format will take a break for 2022, however we will be promoting a range of self-guided walking opportunities with a social media campaign title Waitaha Walk Your Way that will include:

Agents of Discovery, an educational mobile gaming platform that uses augmented reality to encourage young people to be active. It uses an App that is free to download and doesn't require data on site. The 2022 locations for Agents of Discovery are Travis Wetland and Cass Bay.

Hidden World central city trail from 15 April to 15 May 2022 where adventurers can pick up an activity map from Turanga, Christchurch Museum, The Art Gallery or the Botanic Gardens. These central city trails have proved extremely popular in previous Festival's with 6,000 maps picked up by participants in 2021.

For further information about this campaign please talk to your Community Recreation Advisor or follow the facebook page at www.facebook.com/chchwalkingfestival

- **City 2 Surf 2022**

The City 2 Surf has been cancelled for 2022. The organisers are disappointed that they are not able to try out the new course with the new start and new finish, but have appreciated the input and support to bring the course back to the river corridor. Next years' date is Sunday 19 March 2023.

3.3.7 Council Engagement and Consultation.

Topic	Date	Link
Christchurch Gondola top terminal building – new leases	Open for feedback until 27 April 2022	https://ccc.govt.nz/the-council/haveyoursay/show/485
Ihutai-Estuary and Coastal Draft Stormwater Management Plan	Open for feedback until 26 April 2022	https://ccc.govt.nz/the-council/haveyoursay/show/489

- The Waitai Coastal-Burwood Community Board held a Public Forum Briefing on Monday 28 February 2022. This meeting was live streamed to YouTube <https://www.youtube.com/watch?v=rUXsolGml2Q>

The Board were provided with an update from Council Officers on Parks, Residential Red Zone, Coastal and Plain and Road Landscapes (Greenspace) schedules and responsibilities. An opportunity was provided for the Community to raise questions for consideration and response. Responses have been received and shared with those who raised them.

Another topic of relevance for the Coastal ward was a presentation from Emma Hunter on Sustainable Coastlines Christchurch and Pre-production pellet pollution in the Avon-Heathcote Estuary/Ihutai.



4. Advice Provided to the Community Board

4.1 Anzac Fronds – Burwood East Residents' Association

At its meeting on 15 November 2021, the Board received an item of correspondence from the Burwood East Residents' Association in relation to the remaining Fronds and the possibility of them being placed at the Avondale Bridge. The Board decided to refer to staff for investigation and response back to the Community Board by way of memorandum. Attached for the Board's information (refer **Attachment C**) is a memorandum from staff.

4.2 Customer Service Requests/Hybris Report











For the Board's information, attached is a copy of the January 2022 Hybris Report (refer **Attachment D**).

4.3 Burwood East Residents' Association – Avondale Bridge

The Board received email correspondence from the Burwood East Residents' Association on 24 February 2022 in relation to the naming of the Avondale Bridge (refer **Attachment E**). Staff provided the following advice to the Burwood East Residents' Association on Friday 25 February 2022:

"The process for naming the bridge has not started. The Ōtākaro Avon River Corridor co-governance entity will have a role in this - as will the community. No moves to name the bridge have been made yet."

Attachments Ngā Tāpirihanga

No.	Title	Page
A  	Waitai Coastal-Burwood Community Board Funding Update as at 15 February 2022	59
B  	Waitai Coastal-Burwood Community Board Plan Monitoring Report February 2022	60
C  	Waitai Coastal-Burwood Community Board - Staff Memorandum - Anzac Fronds - Response to Burwood East Residents' Associations Correspondence	70
D  	Waitai Coastal-Burwood Community Board - Hybris Report January 2022	73
E  	Burwood East Residents' Association - Avondale Bridge Correspondence	74

Signatories Ngā Kaiwaitohu

Authors	Cindy Sheppard - Community Board Advisor Emily Toase - Community Development Advisor Jacqui Miller - Community Recreation Advisor Katie MacDonald - Community Support Officer Rory Crawford - Community Recreation Advisor Christopher Turner-Bullock - Manager Community Governance, Coastal-Burwood
Approved By	Christopher Turner-Bullock - Manager Community Governance, Coastal-Burwood John Filsell - Head of Community Support and Partnerships

Waitai Coastal-Burwood 2021-22 Community Board Funds - Updated as at 15.02.2022		
Waitai Coastal-Burwood Discretionary Response Fund	Allocation 2021-22	Board Approval
Establishment of the 2021/22 DRF from the SCF	\$71,767.00	N/A
Carry-forward from previous financial year (TBC)	\$17,316.00	N/A
Return of Grant Money from 2020/21 SCF Application - New Brighton Cricket Club Inc	\$562.00	N/A
Waitai Coastal-Burwood Community Board - I Love New Brighton 2022	\$6,000.00	02.08.21
Waitai Coastal-Burwood Community Board - Parklands @ Play 2022	\$5,500.00	02.08.21
Waitai Coastal-Burwood Community Board - Youth Development Fund 2021-22	\$3,500.00	02.08.21
Waitai Coastal-Burwood Community Board - Summer With Your Neighbours 2021-22	\$2,300.00	02.08.21
Waitai Coastal-Burwood Community Board - ANZAC Day Expenses 2022	\$400.00	02.08.21
Waitai Coastal-Burwood Community Board - Garden Pride Awards 2022	\$250.00	02.08.21
St Martins Bowls Incorporated - Interior redecoration of Clubrooms	\$500.00	6.09.21
Educational Childcare Centre Inc - Purchase of blinds	\$3,590.00	6.09.21
Waitai Coastal-Burwood Community Board - Summer With Your Neighbours 2021-22 additional funds	\$1,505.00	18.10.21
Anglican Diocese of Christchurch, Parish of East Christchurch - Community Fridge and Pantry	\$4,800.00	18.10.21
Avon Heathcote Estuary Ihutai Trust - South New Brighton Park restoration and enhancement project	\$3,500.00	18.10.21
Drug-ARM Christchurch - Rent for Art-East	\$5,000.00	14.02.22
Available Balance	\$52,800.00	
Waitai Coastal-Burwood Youth Development Fund	Allocation 2021-22	Approval
Establishment of the 2021-22 Youth Development Fund	\$3,500.00	02.08.21
Holly Gray - National Secondary School Athletics Competition - \$150.00 granted, funds returned 1/11/21	\$0.00	1.09.21
Youth Development Fund Available BALANCE	\$3,500.00	
Shape Your Place Toolkit Funding	Allocation 2021-22	Approval
Allocated funds	\$4,300.00	
Shape your place toolkit funding balance	\$4,300.00	

Waitai Coastal-Burwood Community Board Plan 2020-22 – Monitoring Report

Priority: Make our place appealing and attractive for all.		
What the Board will do	Measures of Success	Progress to date/actions taken
<ul style="list-style-type: none">Encourage the tidying up of the gateway roads to New Brighton and the Waitai/Coastal-Burwood area generally.Advocate for an increase in the quality of general maintenance in the area (street cleaning, roadside maintenance, weeding and mowing and beach access) to improve the perception of the Coastal and Burwood wards.Work with the community to encourage personal responsibility to tidy up the area, possibly through clean-up events.	<ul style="list-style-type: none">Seeing an increase in the maintenance budgets in the long term plan which will ensure more regular maintenance in the Coastal-Burwood area.A decrease in requests for service received from residents.A more visible presence of both parks and maintenance staff and of the community taking personal responsibility for basic maintenance (weeding and rubbish tidy up) in the Coastal-Burwood area.An increase in population levels in the Coastal and Burwood wards.	<p>Date: December 2020 Since the adoption of the Waitai/Coastal-Burwood Community Board Plan on 6 July 2020, there have been several clean up days organised and attended by the Community and the Council. Examples:</p> <ul style="list-style-type: none">Spencerville Residents' Association - River Clean Up and Duck Race and Carnival, Saturday 21 November 2020,November 2020, roadside maintenance of New Brighton Road,October 2020, Graffiti Snapshot – 390.75 removals in the Burwood Ward and 695.5 removals in Coastal Ward.11 October 2020, Beach Clean-up presented by Bacon Brothers, Yoga by Kotte and He Puna TaimoanaSeptember 2020, Thomson Park Mural on the old toilet block.September 2020, Marine Parade/Hawke Street foreshore gardensOctober 2020, Shaw Avenue toilet block clean up and planting. <p>Date: May 2021 Mother of all Clean ups event – Estuary Edge at South Brighton Jetty - 8 May 2021</p> <p>Date: June 2021 Planting day at QEII led by Eco-Action Nursery Trust – 27 June 2021</p> <p>Date: July 2021 Anzac Bridge northern underpass - collaborative approach by Phil Mauger and the Council to make the northern underpass operational again for pedestrians/cyclists.</p> <p>Tirama Mai and Matariki – the light show and the fireworks spectacular event saw New Brighton in particular tidy and appealing for the many thousands of visitors through the months of June/July.</p> <p>New Brighton Mall Clean Up – collaborative approach from the Coastal new Brighton Time Bank, Christchurch City Council and others - 3 July 2021</p> <p>Date: August 2021 The clear film that protects the glass at the New Brighton Pier has been replaced. Planting days:</p> <ul style="list-style-type: none">North Beach Surf Life Saving Club – North Beach sand dunes, 7 August 202Dallington Forest Planting day – 7 August 2021Eco Action Nursery in the Red Zone – 8 August 2021Avon Otakaro Forest Park – 8 August 2021 <p>Date: October 2021 Brighten Up Brighton community clean update – 10 October 2021</p>

		<p>Date: December 2021 Dallington Landing - On Friday 19 November 2021, a small intimate site blessing was held at the Dallington Landing site.</p> <p>The blessing of the Dallington Landing is part of the Ōtākaro Avon River Corridor project which includes the Avondale, Medway and Snell bridges. The Dallington Landing is forecast to be completed in January 2022, except for some planting which will be completed in April/May due to plant availability. The Bridges will have a staggered completion with Avondale first, Medway second and Snell last. The current forecast timing spanning late quarter one of 2022 to early quarter 2 of 2022.</p> <p>Date: February 2022 New Brighton Clean Up Day – 26 February 2022</p>
--	--	--

Priority: Roads and transportation links.		
What the Board will do	Measures of Success	Progress to date/actions taken
<ul style="list-style-type: none"> Advocate during the long term plan process that funding be brought forward for the repair of the Pages Road Bridge and the entrance to the New Brighton Area (project 27273). Advocate during the long term plan process for the consideration of a project to move New Brighton Road onto nearby Red Zone land, to see it fully repaired and away from the current risk of flooding. Liaise with New Zealand Transport Agency where appropriate on roads they are responsible for. Acknowledge and appreciate the significant earthquake repair work that has already been done, much of which is unseen and underground and has required a significant investment of council resources. The board will continue to advocate for the remaining work to be completed. 	<ul style="list-style-type: none"> The current Pages Road Bridge project being brought forward in the next long term plan so the works can be completed earlier. Advice is received from council staff on the pathway to develop a project to move New Brighton Road into the Red Zone. Successfully advocated during the long term plan process for a project to move New Brighton Road into the Red Zone. 	<p>Date: February 2020 The Board received a memorandum providing advice on the pathway to develop a project to move New Brighton Road into the Red Zone. In light of the advice received, the Board are no longer supportive of advocating during the Long Term Plan process for this project.</p> <p>Date: September 2020 Bus Tour of the Coastal-Burwood Wards – The Board and staff had a bus tour on Wednesday 2 September 2020 for the Board to advocate for works to be carried out on street repairs effecting both the Coastal and Burwood wards. The Board also took this opportunity to advocate for the consideration of a new project to move New Brighton Road onto nearby Red Zone land, to see it fully repaired and away from the current risk of flooding.</p> <p>Date: October 2020 Anzac Fronds – A Council Structural Engineer and Architectural Designer have inspected the Fronds to gain insight to inform how they can suggest they can be best arranged and to consider applicable options for foundations. Staff are preparing to present high level options to the Community Board.</p> <p>Date: December 2020 Pages Road Bridge – The Board received a Briefing with an update on the Pages Road Bridge project and the CRAF (Way Better Roads) Project.</p> <p>Date: December 2020 Anzac Fronds – The Board received a Briefing from staff providing them with high level concept designs options to progress to the next stage.</p> <p>Date: February 2021 Anzac Fronds – Environmental planning checks have been completed. Work is currently being undertaken to prepare a Memorandum of Understanding (MOU) between the Council and NZTA. Work is also being undertaken for structural detailing before going out to tender.</p> <p>Date: March 2021 Pages Road Bridge – The Board received a Briefing from staff providing an update on the Pages Road Bridge Project. Staff indicated that they were working with Civil Defence on Tsunami evacuation times, plans and routes.</p> <p>Date: April 2021 Anzac Fronds - At its meeting on 12 April 2021, the Board approved a grant of \$5,000 from its 2020-21 Discretionary Response Fund toward the reinstatement of the Anzac Fronds. The Board also approved concept design option 1.</p> <p>Date: May 2021 Pages Road Bridge – The Board received a Briefing from staff providing an update on the Pages Road Bridge Project.</p> <p>Date: June 2021 Anzac Fronds – Following a safety audit of the Fronds at its previously approved proposed location, safety concerns were raised; 1. Cars driving directly into the fronds is virtually illuminated, 2. A barrier would be required in this position and with no kerb and clear run downhill, 3. The design of the Fronds could be potentially dangerous in a car accident situation.</p>

		<p>To mitigate the safety concerns, the Board was asked to consider an alternative location for the Fronds (to the left of the previously approved proposed location). The Board approved the new proposed location.</p> <p>Date: July 2021 Pages Road Bridge – The Board received a Briefing from staff providing them with an update and presentation on the Pages Road Bridge Renewal Project. Staff also provided traffic modelling scenarios.</p> <p>Date: July 2021 Anzac Fronds – Final signoff/acceptance of the safety audit report findings from New Zealand Transport Agency. Contractors instructed to start works.</p> <p>Date: August 2021 Anzac Fronds – Site preparation works commenced. Fronds arrangements and fabrication to take place at storage site.</p> <p>The Board received a briefing from staff in relation to the transport units work programme and how the Board's board plan priorities fit into the programme within the next three years of the Long Term Plan.</p> <p>Date: October 2021 Anzac Fronds - Following a safety audit of the proposed location of the Anzac Fronds, safety concerns were highlighted. To mitigate the safety concerns the Board approved an alternative location for the Fronds (highlighted in red).</p> <p>Construction is currently underway with an estimated completion date of the end of October/beginning of November 2021. The local Community Governance Team are in the process of organising an unveiling event to be held on Monday 15 November 2021.</p> <p>Date: November 2021 Anzac Fronds Unfurling The Waitai Coastal-Burwood Community Board hosted an event for the long awaited redesigned Anzac Fronds on Monday 15 November 2021. Representatives from the Community, NZTA, Citycare and Council units attended the event. Attendees were presented with a wonderful Kapa Haka performance from students of Rawhiti School. The Mayor and local resident Aileen Trist cut the ribbon to 'formally' reveal the redesigned Fronds. Following this, the Board held its formal meeting in an adjacent field for the swearing in of Councillor Celeste Donovan to the Community Board.</p> <p>Pages Road Bridge – The Board received a Briefing from staff providing an update on the Pages Road Bridge Project.</p> <p>Date: December 2021 Pages Road Bridge – The Board received a Briefing from staff providing an update on the Pages Road Bridge Project.</p>
--	--	---

Priority: Undertake planning for a new community-led facility in the Burwood ward.		
What the Board will do	Measures of Success	Progress to date/actions taken
<ul style="list-style-type: none">With the community, identify the requirements and need for a new community facility in the Burwood Ward.Develop a business case for a community facility.Work towards the community-led development of a facility.Support natural community facility partnerships within groups to flourish.	<ul style="list-style-type: none">A business case is developed for a new community-led facility in the Burwood Ward.Funding in the long term plan is secured if the business case is deemed feasible.A successful partnership model is supported.	<p>Date: November 2020 Staff reported to the Board about meetings held with representatives from Burwood Park Tennis Club to look at ways that the Clubrooms can become more accessible to the local community of Dallington.</p> <p>Date: February 2021 The Board invited All Saints Anglican Church to a Briefing, to listen to their plans for a new Community Facility and to begin discussing how the Board can support All Saints in order to achieve this objective.</p> <p>Date: March 2021 The Board were asked to appoint a Board Liaison person to All Saints Anglican Church in order to strengthen the relationship between the Board and All Saints. This will help progress this objective by providing a direct conduit for the group to the Board.</p> <p>Date June 2021 In June 2021 the Council adopted the Long Term Plan for 2021-2031. Included in this was the following resolution: <i>That the Council retains the existing \$500,000 budgeted in FY 2031/32 as the Council's contribution to a community-partnership development of a community facility between Redwood and Prestons.</i> There is a potential in future for making a case to bring forward this funding to support a new community-led facility in the Burwood Ward. The Board can consider this during future Annual Plans depending on how far progressed a Business Case for a community-led facility is.</p> <p>Date: December 2021 All Saints Anglican Church All Saints on New Brighton road, under the leadership of Carolyn Robertson, is well underway with a new development. All Saints have bought the old foundry from the University of Canterbury and have plans to be submitted to the Council for approval for a brand new Community Facility. The new facility makes use of the whole of the old foundry building and will be a multi-use facility that will offer spaces to all members of the community. Carolyn has a wonderful way of engaging with people and is very inclusive, an attitude that will bring people together in the new space. Carolyn has worked hard with the architects to ensure the spaces serve all ages, stages and demographics. We look forward to watching as the building takes shape and develops.</p>

Priority: Work with the council to improve service delivery at Taiora: QEII.		
What the Board will do	Measures of Success	Progress to date/actions taken
<ul style="list-style-type: none">The board will request and review a design and feasibility study for the installation of new toilets and full accessible change facilities closer to the hydrotherapy pool.The board will advocate, through the long term plan process, for sufficient budget to complete the installation at Taiora: QEII.	<ul style="list-style-type: none">Having the final design for the installation of additional toilets and full accessible change facilities closer to the hydrotherapy pool.The budget is included in the council's next long term plan.The new facilities are installed at Taiora: QEII.	<p>Date: March 2021 No progress has been made in regards to this objective to date. The Board has been provided with draft design for the new toilets and will need to make a submission to the Long Term Plan to secure funding.</p> <p>Date: June 2021 The Community Board included the following request in its Long Term Plan submission: <i>The Board have received feedback from the Community and has included as a priority in our Community Board Plan, the Board kindly requests that the Council include a budget for retrofitting new accessible changing rooms and toilets at Taiora: QEII. The Board has previously received a design and cost estimate for this project.</i> The Board was unsuccessful with this request for a budget and will continue to advocate for this Board Plan priority.</p> <p>Date: November 2021 The Community Board received further feedback to its Long Term Plan Submission: We noted your request for retrofitting new accessible toilets at Taiora: QEII. This was estimated to be \$438,347 for total project cost. We recommend that this is considered in the next LTP after the completion of the full network of aquatic facilities and there is a more comprehensive understanding of need, city-wide.</p> <p>Date February 2022 As part of the Community Board Plan priority to improve disability access at Taiora QEII the Community Board raised the issue of cold draughts impacting on users of the facility. During the planned closure of the facility staff took the opportunity to install an automatic door between the pool change rooms and the reception, in order to help cut down on any draughts coming from reception through to the pool.</p>

Priority: Support the transformation and activation of the Red Zone.		
What the Board will do	Measures of Success	Progress to date/actions taken
<ul style="list-style-type: none">Represent community views during red zone project discussions between council, Te Tira Kāhikuhiku – Red Zones Transformative Land Use Group and central government.Support community-initiated projects that meet the group's guidelines.	<ul style="list-style-type: none">Community Board representatives report back on information from the Te Tira Kāhikuhiku – Red Zones Transformative Land Use Group, via Elected Member Information Exchange.	<p>Date: September 2020 Eco Action Nursery Trust - Te Tira Kāhikuhiku provided a grant of \$20,000 to the Eco Action Nursery Trust to support the work they are doing in Ōtākaro Avon River Corridor green spine area of Chimera Crescent. A Newsline article outlining the project was published on the 24 August 2020. This was the first application to this fund.</p> <p>Date: October 2020 Te Tira Kāhikuhiku recommended the approval of a temporary land use license to Waitākiri Eco-Sanctuary Charitable Trust in Burwood East, to access the land to undertake investigations for an eco-sanctuary.</p> <p>Te Tira Kāhikuhiku recommended the approval of a lease variation to Avon-Ōtākaro Network Adventure Ave, Stage 1B Hut Building, corner of Medway Street and Woodchester Avenue, Richmond.</p> <p>Te Tira Kāhikuhiku recommended the approval of a License to He Waka Tapu for soil remediation in Wainoni and Dallington.</p> <p>Te Tira Kāhikuhiku recommended the approval of a lease to Animal Physio NZ Limited for Dog NeuroPark at 23, 23a and 25 Morganwood Street.</p> <p>Te Tira Kāhikuhiku recommended the approval of a lease to Avon-Ōtākaro Network for the land at the corner of Medway Street and Woodchester Avenue.</p> <p>Te Tira Kāhikuhiku approved a grant of \$12,410 from the Red Zone Transformative Land Use Fund to the Avon-Ōtākaro Forest Park Incorporated towards completing the Brooker Avenue Project.</p> <p>Paul Deacon from Christchurch Disc Golf addressed Te Tira Kāhikuhiku on 7 October 2020 regarding two possible sites for disc golf.</p> <p>Te Tira Kāhikuhiku recommended the approval of the use of land in Burwood east for the Red Zone Colour Run event in November.</p> <p>Date: November 2020 Te Tira Kāhikuhiku recommended the approval of a License to Dallington Residents Association for 17 Gayhurst Road for St Paul's Memorial Garden and placemaking activities.</p> <p>Te Tira Kāhikuhiku recommended the approval of a Licence to the Council for the 2021 Children's Day event to be held on Sunday 7 March 2021 on the corner of New Brighton Road and Locksley Avenue.</p> <p>Te Tira Kāhikuhiku recommended the approval of a Lease to Avon-Ōtākaro Network for the Whītau School – Fun Zone Red Zone on 746 to 774 Avonside Drive.</p> <p>Date: December 2020 Te Tira Kāhikuhiku approved a grant of \$19,663 to Greening the Rubble for a tree platform in the Dallington area and a grant of \$2,200 to Dallington Residents' Association for maintenance costs for the Glenarm Gardens Project.</p> <p>Date: February 2021 Te Tira Kāhikuhiku recommended the approval of a Temporary Land Use for the Locksley Avenue event site for Polyfest on the 13 March.</p>

		<p>Te Tira Kāhikuhiku approved a grant of \$5,700 to the Canine Neuro Park Trust for the Bexley Canine Neuro Park expenses including marketing, materials, plants and equipment.</p> <p>Date: March 2021 Te Tira Kāhikuhiku recommended for approval a temporary land use application for Ao Tawhiti Unlimited Discovery for a lease for a Climate Action Campus on the south side of Cowlshaw Street.</p> <p>Date: April 2021 Te Tira Kāhikuhiku approved a grant of \$8,309 to Watch this Space for Art installations for the Crossing and Play Again project.</p> <p>Te Tira Kāhikuhiku approved a Transformative Land Use application for a licence to hold the Red Zone 6 Mountain Bike Race on Monday 26 April 2021.</p> <p>Date: June 2021 Te Tira Kāhikuhiku approved a grant of \$10,542 to the Barkery Christchurch Limited to install a weekend pup-up café and canine enrichment area on the corner of New Brighton Road and Brooker Avenue in the East x East space.</p> <p>Te Tira Kāhikuhiku approved a Temporary Land Use Application for a licence to Avon Loop Planning Association for a Peace Park in the Avon loop block.</p> <p>Te Tira Kāhikuhiku approved a Temporary Land Use Application for a licence to The Christchurch City Council for Empowerment Project, The Salem Garden, 14 Harvey Terrace, Richmond.</p> <p>Te Tira Kāhikuhiku approved a Temporary Land use Application for a licence to the Avon Ōtākaro Network for Christchurch East Schools Avon Loop Block</p> <p>Date: July 2021 Te Tira Kāhikuhiku approved a grant of \$19,500 to Avon- Ōtākaro Incorporated towards children and young people engagement and facilitation - Whītau School Fun Zone Red Zone Project.</p> <p>Te Tira Kāhikuhiku recommended for approval to the Sustainability and Community Resilience Committee a grant of \$61,500 to Eco-Action Nursery Trust towards the School Programme and Revegetation Project.</p> <p>Te Tira Kāhikuhiku approved a Temporary Land Use Application for a licence to Life in Vacant Spaces (LiVS) for Avondale Red Zone Community Garden, 1 Scoular Place, Avondale, noting that the licence is granted for six months.</p> <p>Date: August 2021 Te Tira Kāhikuhiku approved a Temporary Land Use Application for a licence to Mainmark Ground Engineering (NZ) Limited for Ground improvement Trails at 4 to 10 Breezes Road, noting that the licence is granted for six months.</p> <p>Te Tira Kāhikuhiku approved a Temporary Land Use Application for a lease to Aerospace Christchurch for them to manage and conduct flight trials of small unmanned aerial vehicles/drones in an area generally bounded by Avondale, Hulverstone Drive and Mervyn Drive, Avondale.</p> <p>Date: September 2021 Te Tira Kāhikuhiku approved a grant of \$19,908 from the Red Zones Transitional Use Fund to Ao Tawhiti Unlimited Discovery Board of Trustees for the Climate Action Campus.</p>
--	--	--

		<p>Te Tira Kāhikuhiku recommended that Land Information New Zealand agrees to grant a license to New Zealand Disc Golf Association Inc. for a Disc Golf competition on 2/3 October 2021.</p> <p>Date: October 2021 Te Tira Kāhikuhiku approved the following grants: \$18,896 to Richmond Community Garden Trust for the Riverlution Community Hub, \$1,140 to Redzone Drone Racing Inc for the 2022 Drone Racing NZ Open, \$5,254 to Avon-Ōtākaro Network (AvON) for Children and young people Engagement and Facilitation and \$13,635 to Avon Ōtākaro Forest Park Inc for developing Brooker Ave.</p> <p>Date: December 2021 Te Tira Kāhikuhiku recommended that Land Information New Zealand extends the licence granted to Avon Loop Planning Association on the land in the Avon Loop (at 370-468 Oxford Terrace, 61 Bangor Street, even numbers 14-60 Bangor Street (excluding 44 Bangor Street) and Rees Street for six months, to 30 June 2022, or until such time as the land transfers to the Council.</p> <p>Te Tira Kāhikuhiku recommended that Land Information New Zealand extends the license granted to Christchurch City Council to investigate and plan for an Empowerment Project, The Salam Garden, at 14 Harvey Terrace, Richmond, for six months to 30 June 2022, or until such time as the land transfers to the Council.</p> <p>Te Tira Kāhikuhiku recommended that Land Information New Zealand extends the lease granted to Avon Ōtākaro Network for the storage of White Posts at 8A and 8B Eveleyn Couzins Avenue for six months to 30 June 2022, or until such time as the land transfers to the Council.</p> <p>Te Tira Kāhikuhiku ratified a recommendation made to Land Information New Zealand on 10 November 2021 to grant a license to CJM's Events Ltd for the Colour Zone Run to be held in the vicinity and surrounds of Brooker Avenue in Burwood on 21 November 2021, noting that the location requested has been used for three of their previous events without incident.</p>
--	--	--

Priority: Support the community-led action plan for Brooklands.		
What the Board will do	Measures of Success	Progress to date/actions taken
<ul style="list-style-type: none">Support the community-led action plan, currently being developed.Make a bid to the council's long term plan for a specific budget of up to \$200,000. This budget will enable the items detailed in the community-led action plan to be completed without the need to compete with the priorities for the whole city (e.g. each time a road or street light needs repair). This in turn will give confidence to the community that the council has listened to and addressed their concerns dating back to the earthquakes of 2010 and 2011.	<ul style="list-style-type: none">Liaising with the community to progress the community-led action plan.Budget is secured in the long term plan for a "Brooklands fund" of up to \$200,000.	<p>Date: March 2021 No progress has been made in regards to this objective to date. The Board will need to make a submission to the Long Term Plan to secure funding.</p> <p>Date: June 2021 The Community Board decided not to request a budget of \$200,000 in the 2021-2031 Long Term Plan as they were ultimately aware of the financial position that the Council is currently facing and were conscious of making additional requests for unbudgeted funds.</p> <p>The Community Board also acknowledged that a draft action plan framework was being created prior to Covid-19. In noting this, the majority of the short to medium term actions that were identified in the draft plan have already been completed. This included installing a new "Welcome to Brooklands" sign, assessing the roads in the Brooklands area, filling potholes as required, installing street lights in Earlham Street and replacing a number of bulbs on other streets in Brooklands, to help improve safety in the area. The Community Board noted that the \$200,000 detailed in the board plan was to be used to help prioritise these items and by the work being completed within operational budgets was a real benefit for the community and the Council.</p> <p>The Community Board instead included support for the allocation of \$21 million to the Ōtakaro Avon River Corridor (Project ID: 58672) noting that a portion of this funding will support future plans for Brooklands.</p> <p>Date: November 2021 Staff have been working to engage with the community, exploring avenues to create opportunities to connect with residents to gain a better understanding of their needs and aspirations for the area. Staff are developing a plan to hold a community BBQ to offer a forum for residents and staff to connect and start to build relationships.</p> <p>Date: December 2021 A community BBQ took place Sunday 5 December from 3 to 6pm on Brooklands reserve. The aim of the BBQ was to allow staff to reconnect with members of the community who participated in the previous workshops and to encourage newer members of the community to engage and re-start the conversation around the action plan.</p> <p>Date: February 2022 35 residents attended the community BBQ and staff were able to use the event to kōrero, gather contact details for follow up conversations and create a database of contacts and current issues. A specific Brooklands e-mailbox has been set up for correspondence and the first of a regular e-update was sent out on 11 February 2022 from this address to the mailing list. The e-update included details of a proposal to install gabion baskets at 4 sites where car racing and burnouts are common incidents with the aim of mitigating these issues. The e-mail also included details and encouraged residents to use the Police 105 non-emergency number to report such anti-social behaviour with the aim of reinforcing the understanding of the on-going safety issues in the area.</p> <p>A drop-in session was held 15 February 2022 at Brooklands domain where residents were invited to come along and met with a member of staff. Five residents attended this initial session and these will continue to be held weekly whilst staff build relationships within the community. The aim of the sessions is to meet, listen to participants and gain a thorough understanding of the issues the community face and their aspirations for the future. The information gathered over the coming weeks will feed into a plan drawn up in collaboration with the parks teams for some interim initiatives that will aim to help improve community well-being.</p>

Memos

Christchurch
City Council

Memo

Date: 4 February 2022
From: David Little - Senior Planner Residential Red Zone
To: Coastal-Burwood Community Board
Cc:
Reference: 22/145458

Update on Anzac Bridge fronds

1. Purpose of this Memo

- 1.1 At the Coastal-Burwood meeting of 15 November 2021 the following action was assigned to Council staff, regarding the former Anzac Bridge fronds:

"How many Fronds are left in storage, what condition the remaining Fronds are in, how much would it cost to have the remaining Fronds reinstated at the four corners of the Bridge and if there is a budget that would allow for this."

- 1.2 This memo provides an update to this request.

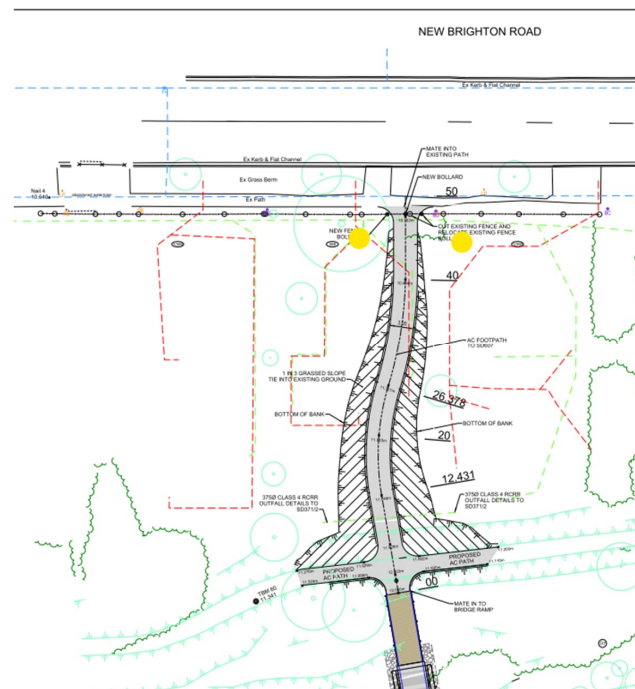
2. Update

- 2.1 There are around 12 fronds left over from the Anzac Drive project, and these are being stored at the Pages Road depot. A photo is attached below.




Memos

- 2.2 Thee fronds appear in reasonably good condition. They have some deformation as a result of being moved around, but this is generally minor and the rusty corten surface does not appear to have deteriorated.
- 2.3 Attaching the fronds to the bridge is not recommended from an architectural perspective. The bridge already has two different types of steel in three different colours (powdercoated red/black and stainless) as well as timber additions. Adding in a third type of steel (corten) with its rusty appearance would create a confusing visual result, and detract from the overall appearance.
- 2.4 As an alternative, we suggest deferring this and looking at options to include it in the City to Sea Pathway project, which is about to enter the design phase. An option of an alternative location is shown below in yellow (at the New Brighton Road entry to the Pathway). Here there would be synergy with the previous installation at the roundabout and it would also help build awareness of the new bridge.



- 2.5 We are still seeking confirmation but do not believe there would be any Resource Consent required to complete this work. Building Consent may be required.
- 2.6 Costs to complete this work would likely be in the same region as the Anzac Drive installation. Costs for either option (ground mount or attach to bridge) are likely to be similar.
- 2.7 This is not a funded project at this time.
- 2.8 As the Ōtākaro Avon River Corridor is a metropolitan facility, any allocation of funding towards this discrete project would need to be approved by the Council.

Memos

Christchurch
City Council 

3. Conclusion

- 3.1 The fronds are in a safe location and are not deteriorating. It is unlikely that funding/design/consenting could occur quickly enough to attach them to the bridge prior to opening. Attachment to the bridge is also not recommended for visual reasons.
- 3.2 Given that design of the City to Sea Pathway project is about to get underway, we recommend that consideration of this proposal is added to the scope of that work instead.

Attachments Ngā Tāpirihanga

There are no attachments to this memo.

Signatories Ngā Kaiwaitohu

Author	David Little - Senior Planner Residential Red Zone
Approved By	Andrew Rutledge - Head of Parks

Ticket Report

01 Jan 2022 - 31 Jan 2022

Coastal-Burwood

Tickets Reported in January 2022

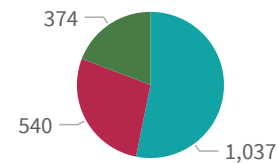
1,951

Tickets Reported

Status as of Report Date

1,417 Closed/Resolved
534 Open

Channels



- Phone/Email/Walk-in
- Snap, Send, Solve
- Website

Currently Open Tickets*

1,597

Open Tickets

110

Avg open ticket age (days)

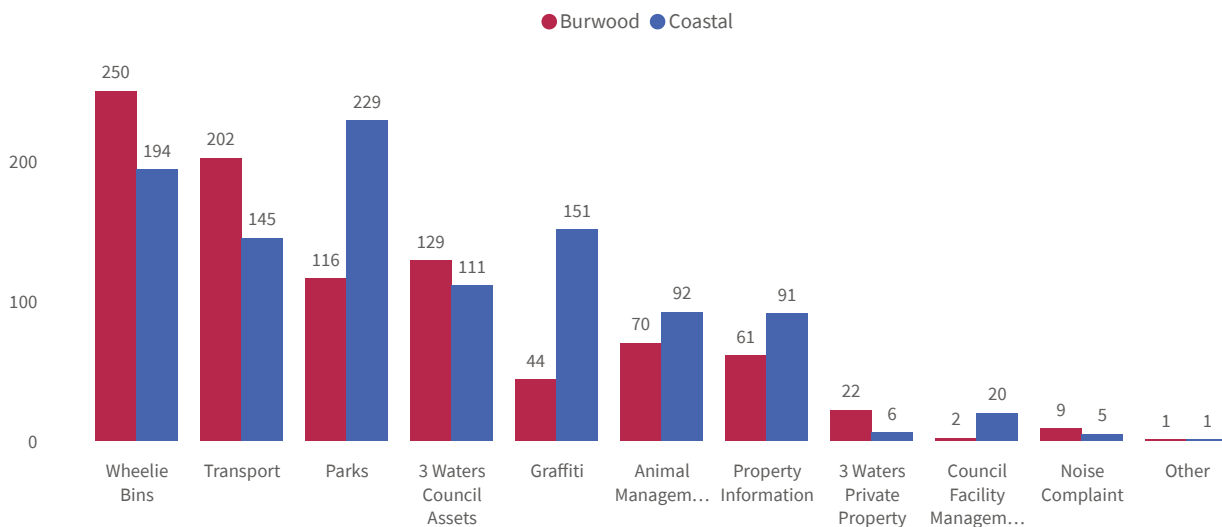
25% of open tickets are less than 8 days old

50% of open tickets are less than 44 days old

75% of open tickets are less than 133 days old

*Open as of report date, reported all time

Tickets Reported this Period by Incident Category



Top 10 Issues

# Tickets	Object Category (sub-categories of the above)
185	Bin Not Collected
154	Graffiti
153	Damaged Bin
127	Leak (Water Supply)
110	Litter (Park)
92	Litter (Road)
80	Residential LIM
59	Road Asset (e.g.footpath,road,furniture)
54	General Maintenance (Parks)
46	Residential Property Files

Report date:
03 Feb 2022

24 February 2022

Dear Community Board Members

We, BERA were dismayed and extremely disappointed to be advised that the Avondale Bridge opening is taking place on 4th March, 2022 with the name of the bridge remaining as Avondale Bridge.

BERA committee communicated with you in October via letter and explicitly requested that the name of the bridge be altered and requested community engagement occur to rename this. The response we received at the time was: *"The new/replacement Ōtākaro Avon River Corridor bridges haven't been formally named – to avoid confusion, they are being referred to by names that indicate their location. The formal process for naming of the bridges is yet to be determined and will be considered in due course."*

In light of this, your letter will now not be treated as correspondence but will be shared along with the staff advice with the Board at its 18 October 2021 meeting."

Unfortunately, we have not been informed of any progress or lack of it regarding the formal process undertaken.

The location of this bridge spans Burwood East and Avondale, so does not, to us, reflect the "location" as mentioned in the response. This still causes us confusion as to why it is named Avondale with the bridge 200m away also named Avondale Bridge. We would appreciate some communication regarding the decision-making process.

This is a missed opportunity to engage positively with our residents and enable them to have input into what occurs in our community.

Kind regards

BERA Committee

13. Elected Members' Information Exchange Te Whakawhiti Whakaaro o Te Kāhui Amorangi

This item provides an opportunity for Board Members to update each other on recent events and/or issues of relevance and interest to the Board.