

**Waipapa
Papanui-Innes Community Board
AGENDA**

Notice of Meeting:

An ordinary meeting of the Waipapa Papanui-Innes Community Board will be held on:

Date: Wednesday 16 June 2021
Time: 9am
Venue: Board Room, Papanui Service Centre,
Corner Langdons Road and Restell Street, Papanui

Membership

Chairperson	Emma Norrish
Deputy Chairperson	Simon Britten
Members	Pauline Cotter
	Mike Davidson
	Ali Jones
	Emma Twaddell

10 June 2021

Elizabeth Hovell
Manager Community Governance, Papanui-Innes
941 8637
Elizabeth.Hovell@ccc.govt.nz
www.ccc.govt.nz

Note: The reports contained within this agenda are for consideration and should not be construed as Council policy unless and until adopted. If you require further information relating to any reports, please contact the person named on the report.

To view copies of Agendas and Minutes, visit:

<https://www.ccc.govt.nz/the-council/meetings-agendas-and-minutes/>

Developing Resilience in the 21st Century

Strategic Framework



Whiria ngā whenu o ngā papa,
honoa ki te maurua tāuikiuki

Bind together the strands of each mat and join
together with the seams of respect and reciprocity

Ōtautahi-Christchurch is a city of opportunity for all

Open to new ideas, new people and new ways of doing things – a city where anything is possible

Principles

Being open,
transparent and
democratically
accountable

Promoting
equity, valuing
diversity and

Taking an inter-generational approach
to sustainable development,
prioritising the social, economic
and cultural wellbeing of
people and communities
and the quality of the
environment, now

Building on the
relationship with
Te Rūnanga o Ngāi Tahu
and the Te Hononga-Council
Papatipu Rūnanga partnership

Ensuring
the diversity
and interests of
our communities
across the city and the

Actively collaborating and
co-operating with other
local, regional
and national
organisations

Community Outcomes

Resilient communities

Strong sense of community
Active participation in civic life
Safe and healthy communities
Celebration of our identity
through arts, culture, heritage,
sport and recreation
Valuing the voices of all cultures
and ages (including children)

Liveable city

Vibrant and thriving city centre
Sustainable suburban and
rural centres
A well connected and accessible
city promoting active and
public transport
Sufficient supply of, and
access to, a range of housing
21st century garden city
we are proud to live in

Healthy environment

Healthy water bodies
High quality drinking water
Unique landscapes and
indigenous biodiversity are
valued and stewardship
exercised
Sustainable use of resources
and minimising waste

Prosperous economy

Great place for people, business
and investment
An inclusive, equitable economy
with broad-based prosperity
for all
A productive, adaptive and
resilient economic base
Modern and robust city
infrastructure and community
facilities

Strategic Priorities

Enabling active
and connected
communities
to own their future

Meeting the challenge
of climate change
through every means
available

Ensuring a high quality
drinking water supply
that is safe and
sustainable

Accelerating the
momentum
the city needs

Ensuring rates are
affordable and
sustainable

Ensuring we get core business done while delivering on our Strategic Priorities and achieving our Community Outcomes

Engagement with
the community and
partners

Strategies, Plans and
Partnerships

Long Term Plan
and Annual Plan

Our service delivery
approach

Monitoring and
reporting on our
progress

Mihi



Tēnā koutou

Kua hui mai nei

Ki tēnei whare ō tātou

Ki te kōrero, ki te whakarongo

i nga kaupapa ō to hapori

Nau mai, haere mai.

Nā reira tēnā koutou katoa

Greetings

to all who have gathered

within our (communal) house

to speak and to listen to the

topics/conversations of your community

Welcome, welcome

Therefore, again I greet all present

Part A	Matters Requiring a Council Decision
Part B	Reports for Information
Part C	Decisions Under Delegation

TABLE OF CONTENTS

Karakia Timatanga	5
C 1. Apologies Ngā Whakapāha	5
B 2. Declarations of Interest Ngā Whakapuaki Aronga	5
C 3. Confirmation of Previous Minutes Te Whakaāe o te hui o mua	5
B 4. Public Forum Te Huinga Whānui	5
B 5. Deputations by Appointment Ngā Huinga Whakaritenga.....	5
B 6. Presentation of Petitions Ngā Pākikitanga	5
B 7. Correspondence	11

STAFF REPORTS

C 8. Application to the Waipapa Papanui-Innes Community Board 2020-21 Discretionary Response Fund - Papanui Redwood Association Football Club Inc., Belfast Netball Inc. and the STYX Living Laboratory Trust	13
C 9. Waipapa Papanui-Innes Community Board Area Report - June 2021	19
B 10. Elected Members' Information Exchange Te Whakawhiti Whakaaro o Te Kāhui Amorangi.....	26

Karakia Timatanga

1. Apologies Ngā Whakapāha

At the close of the agenda no apologies had been received.

2. Declarations of Interest Ngā Whakapuaki Aronga

Members are reminded of the need to be vigilant and to stand aside from decision making when a conflict arises between their role as an elected representative and any private or other external interest they might have.

3. Confirmation of Previous Minutes Te Whakaāe o te hui o mua

That the minutes of the Waipapa Papanui-Innes Community Board meeting held on [Friday, 4 June 2021](#) be confirmed (refer page 6).

4. Public Forum Te Huinga Whānui

A period of up to 30 minutes will be available for people to speak for up to five minutes on any issue that is not the subject of a separate hearings process.

4.1 Positive Youth Development Report Back – Sarah Powley

Sarah Powley will report back to the Board on her participation in the school ecology trip organised by Eco Quest at Whakatiwai located on the Firth of Thames from 18-25 April 2021.

5. Deputations by Appointment Ngā Huinga Whakaritenga

Deputations may be heard on a matter or matters covered by a report on this agenda and approved by the Chairperson.

There were no deputations by appointment at the time the agenda was prepared.

6. Presentation of Petitions Ngā Pākikitanga

There were no petitions received at the time the agenda was prepared.

Waipapa Papanui-Innes Community Board OPEN MINUTES

Date: Friday 4 June 2021
Time: 9am
Venue: Board Room, Papanui Service Centre,
Corner Langdons Road and Restell Street, Papanui

Present

Chairperson	Emma Norrish
Deputy Chairperson	Simon Britten
Members	Pauline Cotter
	Mike Davidson
	Ali Jones
	Emma Twaddell

Elizabeth Hovell
Manager Community Governance, Papanui-Innes
941 8637
Elizabeth.Hovell@ccc.govt.nz
www.ccc.govt.nz

Part A Matters Requiring a Council Decision

Part B Reports for Information

Part C Decisions Under Delegation

Karakia Timatanga: Emma Norrish

The agenda was dealt with in the following order.

1. Apologies Ngā Whakapāha

Part C

Community Board Decision

There were no apologies.

2. Declarations of Interest Ngā Whakapuaki Aronga

Part B

Emma Twaddell declared an interest in Item 9 of the agenda and took no part in the Board's discussion or voting on this item.

3. Confirmation of Previous Minutes Te Whakaāe o te hui o mua

Part C

Community Board Resolved PICB/2021/00050

That the minutes of the Waipapa Papanui-Innes Community Board meeting held on Friday, 21 May 2021 be confirmed subject to the addition of the words "to feed into" between the words "project..." and "...before it goes" in item 9.1.

Mike Davidson/Pauline Cotter

Carried

4. Public Forum Te Huinga Whānui

Part B

There were no public forum presentations.

5. Deputations by Appointment Ngā Huinga Whakaritenga

Part B

There were no deputations by appointment.

6. Presentation of Petitions Ngā Pākikitanga

Part B

There was no presentation of petitions.

7. Waipapa Papanui-Innes Community Board 2020-21 Discretionary Response Fund Application – Papanui Community Toy Library Incorporated.

Community Board Resolved PICB/2021/00051

Officer Recommendation accepted without change

Part C

That the Waipapa Papanui-Innes Community Board:

1. Approves a grant of \$3,000 from its 2020-21 Discretionary Response Fund to Papanui Community Toy Library Incorporated towards the wages of the Toy Library Supervisor.

Ali Jones/Mike Davidson

Carried

8. Waipapa Papanui-Innes Community Board 2020-21 Discretionary Response Fund Application – Papanui Leagues Club Incorporated

Community Board Resolved PICB/2021/00052

Officer Recommendation accepted without change

Part C

That the Waipapa Papanui-Innes Community Board:

1. Approves a grant of \$6000 from its 2020-21 Discretionary Response Fund to Papanui Leagues Club Inc. towards the production of the Club's Centenary History book.

Emma Norrish/Simon Britten

Carried

Ali Jones requested that her vote against the resolution be recorded.

9. Waipapa Papanui-Innes Community Board 2020-21 Discretionary Response Fund Application - St Albans Residents Association

Board Comment

The Board discussed the appropriate level of funding and decided to approve a grant of \$3,000 instead of the \$2,000 recommended by officers.

Officer Recommendations / Ngā Tūtohu

That the Waipapa Papanui-Innes Community Board:

1. Approves a grant of \$2,000 from its 2020-21 Discretionary Response Fund to St Albans Residents Association towards the wages for an interim Community Centre Manager.

Community Board Resolved PICB/2021/00053

Part C

That the Waipapa Papanui-Innes Community Board:

1. Approves a grant of \$3,000 from its 2020-21 Discretionary Response Fund to St Albans Residents Association towards the wages for an interim Community Centre Manager

Pauline Cotter/Simon Britten

Carried

Emma Twaddell declared an interest in Item 9 of the agenda and took no part in the Board's discussion or voting on this item.

Ali Jones requested that her vote against the resolution be recorded.

10. Waipapa Papanui-Innes Community Board 2020-21 Discretionary Response Fund Application - Northcote School.

Officer Recommendations / Ngā Tūtohu

That the Waipapa Papanui-Innes Community Board:

1. Approves a grant of \$2,000 from its 2020-21 Discretionary Response Fund to Northcote School towards the purchase of Kapa Haka uniforms.

Community Board Resolved PICB/2021/00054

Part C

That the Waipapa Papanui-Innes Community Board:

1. Approves a grant of \$2,000 from its 2020-21 Discretionary Response Fund to Northcote School towards the purchase of Kapa Haka uniforms.

Pauline Cotter/Emma Norrish

Carried

Community Board Resolved PICB/2021/00055

2. Transfer any unallocated funds in the Positive Youth Development Fund into the Discretionary Response Fund.

Pauline Cotter/Emma Norrish

Carried

Pauline Cotter left the meeting at 9:36 am and returned to the meeting at 9:37 am.

11. Elected Members' Information Exchange Te Whakawhiti Whakaaro o Te Kāhui Amorangi

Part B

Board members exchanged information as follows:

11.1 Kohinga St Albans Community Centre

The Community Centre is proving to be very successful with good uptake of room bookings and programme memberships.

The noise echo in the hallway is challenging and some noise dampening on the floor might be necessary.

11.2 Redundant Road Cones

The Board asked whether the process for reporting redundant road cones through Snap Send Solve could be more widely advertised.

11.3 Westminster Street Traffic Counter

The Board discussed concerns about wet weather interfering with the traffic counting devices, and also concerns that the Westminster Street counter is on a corner so might under-report vehicle speeds at that location.

11.4 Housing Development on Oxley Street

Board members reported concerns from residents about the development on Oxley Street.

11.5 Traffic Enforcement

The Board discussed ongoing issues about speeding and red light running in the area and asked to meet with the Police to discuss this.

11.6 Air Monitoring Around the Christchurch Northern Corridor

The Board asked for information about what air quality monitoring is being done around the Christchurch Northern Corridor.

11.7 Car Park on Winston Avenue

The Board asked for information on what is happening with the car park on Winston Avenue.

11.8 Courtenay Street

The Board asked for information on whether any maintenance works are planned for Courtenay Street.

Meeting concluded at 9.51am.

CONFIRMED THIS 16TH DAY OF JUNE 2021.

**EMMA NORRISH
CHAIRPERSON**

7. Correspondence

Reference Te Tohutoro: 21/775953

Report of Te Pou Matua: Aidan Kimberley – Community Board Advisor Papanui-Innes
Aidan.Kimberley@ccc.govt.nz

General Manager Mary Richardson – General Manager Citizens and Community
Pouwhakarae: Mary.Richardson@ccc.govt.nz

1. Purpose of Report Te Pūtake Pūrongo

Correspondence has been received from:

Name	Subject
Jova Waqa	Positive Youth Development Report Back

2. Officer Recommendations Ngā Tūtohu

That the Papanui-Innes Community Board:

1. Receive the information in the Correspondence Report dated 16 June 2021.

Attachments Ngā Tāpirihanga

No.	Title	Page
A ↓	Jova Waqa - Thank you for Youth Fund grant	12

85 Harris Crescent
Papanui
Christchurch 8053

2 June 2021

Attention: Sharon
The Papanui-Innes Community Board
Papanui Services Centre
35 Langdons Road
Christchurch

Dear Sir/Madam,

**Re: NZ Secondary School Volleyball Nationals – Palmerston North Jova
Waga donation of \$350.**

I would like to take the opportunity to sincerely thank the chairman and board members of Papanui-Innes Community Board for the kind donation of \$350 that I was rendered to facilitate my travel to nationals in March this year.

My name is Jova Waga a New Zealander by birth but originally from the beautiful islands of Fiji. This was my first year at Nationals and I am forever grateful and humbled for the opportunity to take part and see the level of competition this tournament offered.

I have competed in school Volleyball since Year 9 and now at Year 11 and believe that being at nationals has inspired me to pursue Volleyball. We as team did not do too well at nationals however learned a lot and experienced.

However as of today, I am also grateful for opportunity to represent Canterbury Volleyball U17 for the IPC Games in Wellington from the 4th of June to 7 of June 2021. I am grateful for the support and help that birthed my desire to take on Volleyball seriously while at Nationals. Furthermore, I joined the Shirley Volleyball Club's team Blackbacks this winter and look forward to the many games and hope to do Papanui proud as I live in Papanui.

In conclusion my heartfelt thank you again for the kind donation which I believe my family and I much appreciate. Thank you kindly and god bless Papanui-Innes Community Board.

Yours faithfully
Jova Waga (Year 11 Burnside High School Volleyball)
Christchurch, NZ

8. Application to the Waipapa Papanui-Innes Community Board 2020-21 Discretionary Response Fund - Papanui Redwood Association Football Club Inc., Belfast Netball Inc. and the STYX Living Laboratory Trust

Reference Te Tohutoro: 21/654611

Helen Miles - Community Recreation Advisor

Helen.miles@ccc.govt.nz

Report of Te Pou Matua:

Trevor Cattermole – Community Development Advisor

Trevor.Cattermole@ccc.govt.nz

General Manager

Mary Richardson: General Manager Citizens & Community

Pouwhakarae:

Mary.Richardson@ccc.govt.nz

1. Purpose of Report Te Pūtake Pūrongo

- 1.1 The purpose of this report is for the Waipapa Papanui-Innes Community Board to consider an application for funding from its 2020-21 Discretionary Response Fund from the organisations listed below.

Funding Request Number	Organisation	Project Name	Amount Requested	Amount Recommended
00063148	Papanui Redwood Association Football Club Inc.	Owen Mitchell Park Floodlights	\$8756	\$8000
00063146	Belfast Netball Club Inc.	Court Hire, Balls	\$5,190	\$2000
00063167	STYX Living Laboratory Trust	Styx Living Laboratory Trust Work Programme, Education Programme and development of the Talking Circle	\$14,498	\$7,556

- 1.2 There is currently a balance of \$17,556 remaining in the fund.

2. Officer Recommendations Ngā Tūtohu

That the Waipapa Papanui-Innes Community Board:

- Approves a grant of \$8,000 from its 2020/21 Discretionary Response Fund to Papanui Redwood Association Football Club Incorporated towards the cost of new lights at Owen Mitchell Park.
- Approves a grant of \$2,000 from its 2020/21 Discretionary Response Fund to Belfast Netball Club Incorporated towards the cost of court hire and new balls.
- Approves a grant of \$7,556 from its 2020-21 Discretionary Response Fund to the STYX Living Laboratory Trust towards their Annual Work Programme, Education Programme and development of the Talking Circle.

3. Key Points Ngā Take Matua

Strategic Alignment Te Rautaki Tīaroaro

- 3.1 The recommendation is strongly aligned to the Strategic Framework and in particular the strategic priority of Resilient Communities – Strong sense of community, Safe and healthy communities, Celebration of our identity through arts, culture, heritage, sport and recreation and valuing the voices of all cultures and ages. Strengthening Communities Strategy goal five and six. It will also align to the Waipapa Papanui-Innes Community Board's Plan that vulnerable communities are supported by advocating for targeted funding to support youth, elderly and social isolation issues, build strong relationships and well-connected networks.

Decision Making Authority Te Mana Whakatau

- 3.2 The Community Board has the delegated authority to determine the allocation of the Discretionary Response Fund for each community.
- 3.2.1 Allocations must be consistent with any policies, standards or criteria adopted by the Council
- 3.2.2 The Fund does not cover:
- Legal challenges or Environment Court challenges against the Council, Council Controlled organisations or Community Board decisions
 - Projects or initiatives that change the scope of a Council project or that will lead to ongoing operational costs to the Council (though Community Boards can recommend to the Council that it consider a grant for this purpose).

Assessment of Significance and Engagement Te Aromatawai Whakahirahira

- 3.3 The decisions in this report are of low significance in relation to the Christchurch City Council's Significance and Engagement Policy.
- 3.4 The level of significance was determined by the number of people affected and/or with an interest.
- 3.5 Due to the assessment of low significance, no further community engagement and consultation is required.

Discussion Kōrerorero

- 3.6 At the time of writing, the balance of the 2020-21 Discretionary Response Fund is as below.

Total Budget 2020/21	Granted To Date	Available for allocation	Balance If Staff Recommendation adopted
\$146,506	\$133,950	\$21,256	\$3,700.55

- 3.7 Based on the current Discretionary Response Fund criteria, the applications listed above are eligible for funding.
- 3.8 The attached Decision Matrices provide detailed information for the applications including organisational details, project details, financial information and a staff assessment.

Attachments Ngā Tāpirihanga

No.	Title	Page
A ↓	Papanui-Innes Decision Matrix DRF 2020-21 - Papanui Redwood Association Football Club Inc.	16
B ↓	Papanui-Innes Decision Matrix DRF 2020-21 - Belfast Netball Club Inc.	17
C ↓	Papanui-Innes Decision Matrix DRF 2020-21 - Styx Living Laboratory Trust	18

Confirmation of Statutory Compliance Te Whakatūturutanga ā-Ture

Compliance with Statutory Decision-making Requirements (ss 76 - 81 Local Government Act 2002).

(a) This report contains:

- (i) sufficient information about all reasonably practicable options identified and assessed in terms of their advantages and disadvantages; and
- (ii) adequate consideration of the views and preferences of affected and interested persons bearing in mind any proposed or previous community engagement.

(b) The information reflects the level of significance of the matters covered by the report, as determined in accordance with the Council's significance and engagement policy.

Signatories Ngā Kaiwaitohu

Authors	Helen Miles - Community Recreation Advisor Trevor Cattermole - Community Development Advisor
Approved By	Elizabeth Hovell - Manager Community Governance, Papanui-Innes

2020/21 DRF PAPANUI-INNES DECISION MATRIX

Priority Rating

One	Meets all eligibility criteria and contributes significantly to Funding Outcomes and Priorities. Highly recommended for funding.
Two	Meets all eligibility criteria and contributes to Funding Outcomes and Priorities. Recommended for funding.
Three	Meets all eligibility criteria and contributes to Funding Outcomes and Priorities but to a lesser extent than Priority 2 applications. Not recommended for funding.
Four	Meets all eligibility criteria and has minimum contribution to Funding Outcomes and Priorities / Insufficient information provided by applicant (in application and after request from Advisor) / Other funding sources more appropriate. Not recommended for funding.

00063148	Organisation Name Papanui Redwood Association Football Club Incorporated	Name and Description Owen Mitchell Park Floodlights To replace the current poles and lights at Owen Mitchell Park with a more modern setup to give better direct lighting coverage of the pitch.	Funding History 2019/20 - \$3,500 (Club Activities) DRF PI 2018/19 - \$2,000 (Volunteer Recognition and Rental Costs) SCF PI 2018/19 - \$800 (Venue Hire and Volunteer Expenses) SCF FWH 2017/18 - \$5,000 (New Portable Goal Posts, Volunteer Recognition, Rent) SCF SP Other Sources of Funding \$15,000 - One Foundation and The Community Trust \$20,000 - Youthtown application pending	Request Budget Total Cost \$43,756 Requested Amount \$ 8,756 20% percentage requested Contribution Sought Towards: Equipment/Materials - \$8,756	Staff Recommendation \$ 8,000 That the Waipapa/Papanui-Innes Community Board approve a grant of \$8,000 from its 2020-21 Discretionary Response Fund to the Papanui Redwood Association Football Club Incorporated towards the cost of purchasing new lighting for Owen Mitchell Park subject to approval from Christchurch City Council Parks.	Priority 2
----------	--	--	---	--	---	---------------------------------

Organisation Details: Service Base: Redwood Park, Sturrocks Road, Redwood, Christchurch Legal Status: Incorporated Society Established: 30/01/1984 Staff – Paid: 0 Volunteers: 25 Annual Volunteer Hours: 2500 Participants: 300 Target Groups: Sports/Recreation Networks: Mainland Football, NZ Football	Alignment with Council Strategies and Policies <ul style="list-style-type: none"> Physical Recreation and Sport Strategy Strengthening Communities Strategy Youth Strategy Children's Strategy Council Community Outcomes: Resilient Communities Community Board Plan: Improve and support community facilities and amenity in the Papanui - Innes Wards. Vulnerable Communities are supported. Alignment with Council Funding Outcomes <ul style="list-style-type: none"> Support, develop and promote capacity Community participation and awareness Provide community based programmes Outcomes that will be achieved through this project Increase mid-week training sessions available to all members. Promote more active participation of our members and allegiance to the club. Encourage and nurture skill-development and team work within younger teams. How Will Participants Be Better Off? By bringing team members together mid-week will promote unity and team work as well providing an opportunity for skill development that can be put into practice on game day.	Staff Assessment Papanui Redwood Association Football Club (Club) was first established in 1974 originally as a section of the Papanui Working Men's Club. In 1983 the Club moved away from the Working Men's Club and added the name Redwood. The Club currently uses Owen Mitchell Park, Redwood Park and St James Park as their home grounds. The Club has approximately 300 members, ranging in age from six years through to 66 years with the majority of these being junior members. The current lights at Owen Mitchell Park urgently need updating due to their age, deterioration and cost to run. During the past season when the lights have broken down repairs have been difficult due to not being able to source appropriate parts. The current poor function of the lights now poses a Health and Safety issue to the Club in managing the up-keep of the lights and the wellbeing of players whilst practicing. The new lights will increase direct light to the pitch but will decrease lighting spill. Upon writing this assessment the Club are still in the process of gaining the full amount of funds for this project and approval from Christchurch City Council Parks for approval to install new lights.
--	---	---

2020/21 DRF PAPANUI-INNES DECISION MATRIX

Priority Rating

One	Meets all eligibility criteria and contributes significantly to Funding Outcomes and Priorities. Highly recommended for funding.
Two	Meets all eligibility criteria and contributes to Funding Outcomes and Priorities. Recommended for funding.
Three	Meets all eligibility criteria and contributes to Funding Outcomes and Priorities but to a lesser extent than Priority 2 applications. Not recommended for funding.
Four	Meets all eligibility criteria and has minimum contribution to Funding Outcomes and Priorities / Insufficient information provided by applicant (in application and after request from Advisor) / Other funding sources more appropriate. Not recommended for funding.

00063146	Organisation Name	Name and Description	Total Cost	Contribution Sought Towards	Staff Recommendation	Priority
	Belfast Netball Club Inc	<p>Court Hire, Balls</p> <p>Split Application – Papanui-Innes 50% / Fendalton-Waimairi-Harewood 50%</p> <p>Belfast Netball Club requires court hire due to the current condition of the outdoor courts - the courts at Sheldon Park are currently a health and safety concern. The repair is currently included in the Long Term Plan.</p> <p>We require more balls for the season.</p>	<p>\$ 5,190</p> <p>Requested</p> <p>\$ 4,190</p> <p>(81% requested)</p>	Rent/Venue Hire - \$2,500 Equipment/Materials - \$1,690	<p>\$ 2,000</p> <p>That the Waipapa/Papanui-Innes Community Board approve a grant of \$2,000 from its 2020-21 Discretionary Response Fund to the Belfast Netball Club Incorporated towards the cost of court hire and replacement of netball balls.</p>	2

Organisation Details

Service Base: 672 Main North Road, Belfast, Christchurch
Legal Status: Incorporated Society
Established: 20/03/1986
Target Groups: Sports/Recreation
Annual Volunteer Hours: 2100
Participants: 250

Alignment with Council Strategies

- Physical Recreation and Sport Strategy
- Strengthening Communities Strategy
- Youth Strategy
- Children's Strategy
- Council Community Outcomes: Resilient Communities
- Community Board Plan: Improve and support community facilities and amenity in the Papanui - Innes Wards. Vulnerable Communities are supported.

CCC Funding History

2020/21 - \$2,000 (Coaches Training and Canterbury Netball Fees) SCF PI
2019/20 - \$1,500 (Equipment) DRF PI
2019/20 - \$1,000 (Equipment) DRF FWH
2012/13 - \$1,000 (Training and Equipment) SGF SP
2012/13 - \$500 (Balls, Bibs for Junior Netball Programme) SGF BP

Other Sources of Funding

Nil

Staff Assessment

This is a split application: Papanui-Innes Community Board 50% / Fendalton-Waimairi-Harewood Community Board 50%.

This project takes a community recreation approach targeting grass roots participation and is increasing the capacity of the Belfast Netball Club (Club) to deliver quality recreation and sporting experiences for netball players in the Belfast area. Due to population shifts within Christchurch the Club has and will continue to grow as Belfast population increases. The condition of the netball courts are deemed by the Club as unsafe due to their condition for their higher grade teams to train at night. There has been a number of injuries and near misses and the Club feel they have a responsibility to provide a safe environment for the players to train on. This project has been highlighted in the Long Term Plan. At the time of writing of this report, there has been no decision by Council. In the interim the Club want to source alternative training facilities. The Club would like to hire a gymnasium twice a week from 6.30-8.00pm. These times will accommodate 50 players of their higher grade players. Netballs are well used by the members of the Club and requires replacement on an annual basis. The Club endeavors to keep all subscriptions to a minimum and runs a number of fundraising activities throughout the year.

This application presents a low financial and delivery risk.

Fendalton-Waimairi-Harewood staff recommendation is: \$1,000

2020/21 DRF PAPANUI-INNES DECISION MATRIX

Priority Rating

One	Meets all eligibility criteria and contributes significantly to Funding Outcomes and Priorities. Highly recommended for funding.
Two	Meets all eligibility criteria and contributes to Funding Outcomes and Priorities. Recommended for funding.
Three	Meets all eligibility criteria and contributes to Funding Outcomes and Priorities but to a lesser extent than Priority 2 applications. Not recommended for funding.
Four	Meets all eligibility criteria and has minimum contribution to Funding Outcomes and Priorities / Insufficient information provided by applicant (in application and after request from Advisor) / Other funding sources more appropriate. Not recommended for funding.

00063167	<p>Organisation Name</p> <p>STYX Living Laboratory Trust</p>	<p>Name and Description</p> <p>Styx Living Laboratory Trust Work Programme + Talking Circle</p> <p>Split application PI 60% / FWH 40%</p> <p>The Styx Living Laboratory Trust (STYXLL) was set up to implement Christchurch City Council (CCC) policy for the Styx River catchment in relation to the Styx Vision 2000 - 2040. The Trust's primary role is to develop the whole of the Styx River catchment as a place for learning and research.</p> <p>Funding is sought for the continuation of the Styx Living Laboratory Trust's Annual Work Programme, namely administration salary, intern salary, equipment and materials, travel and volunteer recognition.</p> <p>Funding is also sought for the construction of the talking circle and the education programme which will support and enhance the capacity of the Rongoā Practitioners.</p>	<p>Funding History</p> <p>2020/21 - \$666 (Woven Harakeke Concrete Bench Tops) Creative Communities Fund 2020-21 - \$6,500 (Programme) SCF PI 2020-21 - \$2,000 (Programme) SCF FWH 2019/20 - \$4,280 (Programme) SCF PI 2019/20 - \$4,000 (Programme) SCF FWH 2018/19 - \$6,000 (\$3,000 towards Intern salary and, \$3,000 towards administration) SCF PI</p> <p>Other Sources of Funding</p> <p>There are no other sources of funding granted to this project or activity.</p> <p>Much of our funding is tagged to specific projects such as creating a Restoration and Education Hub, Freshwater Improvement Fund Project, creating an urban national reserve, conservation projects coordinator. We have very few unallocated funds that we could dedicate to this project.</p>	<p>Request Budget</p> <p>Total Cost</p> <p>\$19,798</p> <p>Requested Amount</p> <p>\$14,498</p> <p>73% percentage requested</p> <p>Contribution Sought Towards:</p> <p>Equipment/Materials (Talking Circle) - \$1,598 Travel (Buses for schools) - \$1,500 Volunteer Recognition - \$200 Other: \$8,000 (Scholarships for research students) Other: \$3,200 (Joint Education Programme with Kuhukura Rongoā Maori Trust)</p>	<p>Staff Recommendation</p> <p>\$ 7,556</p> <p>That the Waipapa/Papanui-Innes Community Board approve a grant of \$7,556 from its 2020-21 Discretionary Response Fund to the STYX Living Laboratory Trust towards their Annual Work Programme, Education Programme and development of the Talking Circle.</p>	<p>Priority</p> <p>2</p>
----------	---	---	---	---	---	--

<p>Organisation Details:</p> <p>Service Base: Christchurch City Council (Parks) - 60 Husseys Road, Northwood, Christchurch.</p> <p>Legal Status: Charitable Trust</p> <p>Established: 6/05/2002</p> <p>Staff – Paid: 2</p> <p>Volunteers: 60</p> <p>Annual Volunteer Hours: 2000</p> <p>Participants: 5,000</p> <p>Target Groups: Environment</p> <p>Networks: No membership.</p> <p>We are supported through memorandums of understanding (MOUs) by Environment Canterbury, the Christchurch City Council, Maanaki Whenua - Landcare Research, NIWA, Lincoln University and Willowbank Wildlife Trust.</p> <p>Organisation Description/Objectives:</p> <p>Support Council Vision 3 - Develop a "Living Laboratory" that focuses on learning and research in the Styx River catchment.</p>	<p>Alignment with Council Strategies and Policies</p> <ul style="list-style-type: none"> Strengthening Communities Strategy The Styx Vision 2000-2040 <p>Alignment with Council Funding Outcomes</p> <ul style="list-style-type: none"> Support, develop and promote capacity Community participation and awareness Increase community engagement Provide community based programmes Reduce or overcome barriers Foster collaborative responses <p>Outcomes that will be achieved through this project</p> <ol style="list-style-type: none"> We will increase our education programmes/education activities with schools. Increased community awareness and participation in environmental activities in the Styx. We will increase research opportunities in the Styx through supporting a research student. The construction of the talking circle and the education programme will support and enhance the capacity of the Rongoā Practitioners. <p>How Will Participants Be Better Off?</p> <p>Declining freshwater quality is a huge problem throughout Aotearoa, and particularly so in Canterbury. By working to protect and restore the Styx/Pūharekekenui catchment, we can not only benefit the natural environment and the species therein, but we can also connect Christchurch residents to their own backyard through citizen science and education and raise awareness of how precious our waterways are. Our 'Summer in the Styx' event brings approximately 500 people out to the Styx every year to enjoy a day of exploring in the Styx and engaging in citizen science whilst highlighting the amazing work of all the different conservation groups operating in the Styx. Our mahi also provides recreation areas for families and environmental education for the community and particularly for young people who could grow up to be the next leading freshwater ecologists. Participants involved in the education programme will be provided with knowledge about tikanga and cultural practices.</p>	<p>Staff Assessment</p> <p>The Styx Living Laboratory Trust is a local river care group, which was established in 2000 to achieve Vision 3 (Develop a "living laboratory" that focuses on both learning and research) of the Christchurch City Council's `Styx Vision 2000 - 2040'. The Trust has since encompassed a role of guardianship and advocacy for the Pūharekekenui River and the biodiversity of the surrounding land as a living part of the Canterbury landscape. Engaging the community in citizen science is a key focus of the "Living Laboratory" component of the Trust and they promote and foster community awareness of the waterway by undertaking monthly community bird watching, water quality monitoring and forest restoration activities.</p> <p>Their work programme includes the above-mentioned activities as well as events such as, 'Summer in the Styx', education and research which encourages the community to visit and learn about monitoring and environmental issues and is undertaken in collaboration with other external community organisations including Avon Otakaro Forest Network and Travis Wetlands, Department of Conservation, Christchurch City Council, Fish and Game, Forest and Bird, Rongoā Maori, Styx History Group, Trees for Canterbury, Willowbank Wildlife Reserve and many others.</p> <p>The Trust is also seeking to provide a scholarship for either a Masters student or summer research scholar(s) to help further research activities and learning in the Styx. This scholarship would be supported by either Lincoln University, the Christchurch City Council or Environment Canterbury.</p> <p>This year the Trust is looking to provide an education programme working with the Kahukura Rongoā Maori Trust. Schools would be welcomed onto the site by Mana Whenua and would learn tikanga and Te Reo about Rongoā, Ngahere and the Whenua whilst planting, releasing or mulching before splitting into other rotating sessions such as water quality monitoring, bird monitoring and learning about Rongoā Māori.</p> <p>Concurrent with the education programme the Trust is seeking support for the further development of a "Talking Circle" where activities and education talks can be delivered during the tours, Matariki celebrations, planning Hui and night walks.</p> <p>The Trust's work actively contributes to the Christchurch City Council's 'Vision 2000-2040' and the protection of the Styx/Pūharakekenui river catchment and its environs.</p>
--	--	--



9. Waipapa Papanui-Innes Community Board Area Report - June 2021

Reference / Te Tohutoro: 21/611844

Report of / Te Pou Elizabeth Hovell – Community Board Advisor

Matua: Elizabeth.Hovell@ccc.govt.nz

General Manager / Mary Richardson – General Manager Citizens and Community

Pouwhakarae: Mary.Richardson@ccc.govt.nz

1. Purpose of Report / Te Pūtake Pūrongo

This report provides the Board with an overview on initiatives and issues current within the Waipapa Papanui-Innes Community Board area.

2. Officer Recommendations / Ngā Tūtohu

That the Waipapa Papanui-Innes Community Board:

1. Receive the Waipapa Papanui-Innes Community Board Area Report for June 2021.

3. Community Support, Governance and Partnership Activity

3.1 Community Governance Projects

Activity	Detail	Timeline	Strategic Alignment
Langdons Road	Safety audit requested.	Ongoing	Endorse and encourage a functioning and safe traffic network that supports a connected community.
10 Shirley Road activation	Landscape plan requested	Ongoing	Improve and support community facilities and amenity in the Papanui-Innes Wards.
Traffic Projects St Albans	Trials of calming measures being undertaken to mitigate rat-running	Ongoing	Endorse and encourage a functioning and safe traffic network that supports a connected community.

3.2 Community Funding Summary

- 3.2.1 The final balance for the 2020-2021 financial year's Positive Youth Development and Discretionary Response Funds Balance Sheet will be available after 30 June 2021 once the wash-up of any transferred or unused funds is available.

3.3 Participation in and Contribution to Decision Making

3.3.1 Report back on other Activities contributing to Community Board Plan [for items not included in the above table but are included in Community Board Plan]

- **Arbour Day 2021 – Papanui Bush**

Unfortunately the planned working bee to celebrate Arbour Day by clearing weeds and rubbish from the Papanui Bush (Bridgestone Reserve) had to be cancelled due to the excessive amount of rain the previous weekend.

Staff will look at the feasibility of another maintenance/planting day in conjunction with the local Rotary chapter.

3.3.2 Council Engagement and Consultation.

Current

- **Proposed Replacement Freedom Camping Bylaw 2021**

(closes 21 June 2021) Weblink: [Freedom Camping Bylaw 2021](#)

The Council is proposing changes to the Freedom Camping Bylaw which aims to balance freedom camping opportunities with necessary limitations to ensure local areas are protected.

Recent

- **Cranford Street bus lane trial**

(closed 1 June 2021)

Peak hour bus priority lanes were installed on Cranford Street between Innes Road and Berwick Street on a trial basis.

- **Representation Review Initial Proposal 2021**

(closed 16 May 2021)

Community feedback on how many councillors and community board members there are, how they're elected, and what communities they represent.

The verbal hearings for this initial proposal were held on 24 and 26 May 2021.

3.4 Governance Advice

3.4.1 Memorial Plaque/s

At the Board's meeting on 19 February 2021 the Board requested that staff provide information on the process for installing memorial plaques.

Local residents are able to request a plaque by phoning the call centre to log a customer service request. The area Parks Advisor will work with the resident to identify a suitable item and location to install the plaque on. Common examples of items that plaques are installed on are seats or picnic tables. Plaques on trees are not encouraged because they can harm the health of the tree.

Plaques are only installed on new assets, so this process always involves purchasing a new seat (or whatever other type of item the plaque is being installed on). This process is paid for by the resident, however once payment is made the Council manages the process to purchase and install the items and the new asset is added into the park maintenance schedule.



3.4.2 Innes Road Pedestrian Crossing Improvements

The Traffic Engineer advised that there has been good progress with the improvements to the pedestrian crossings near Mairehau School on Innes Road. Patch repairs were made to the asphalt at the two crossing points to allow the enhanced crossing markings to be installed in advance of the full resurface scheduled for that section of Innes Road.

The only outstanding element of the crossing improvements which is yet to be installed is the red coloured surfacing. This is because the contractor has advised that the best practice is to let the fresh asphalt cure for a couple of weeks before installing the

coloured surfacing. This ensures that both the asphalt and coloured surface last as long as possible and do not fail prematurely.

The area Traffic Engineer has been in direct contact with the two adjacent schools about this work.

Item 9

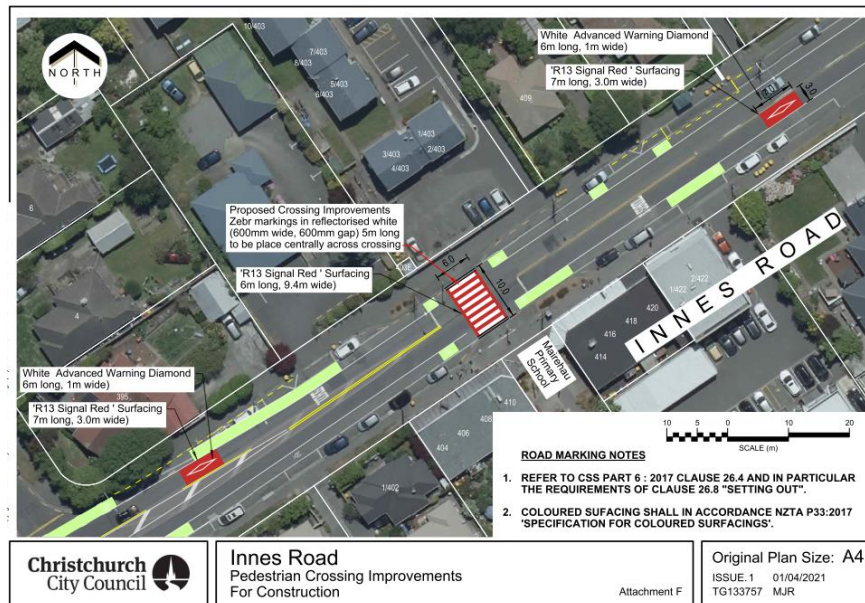


Fig 1: Mairehau School

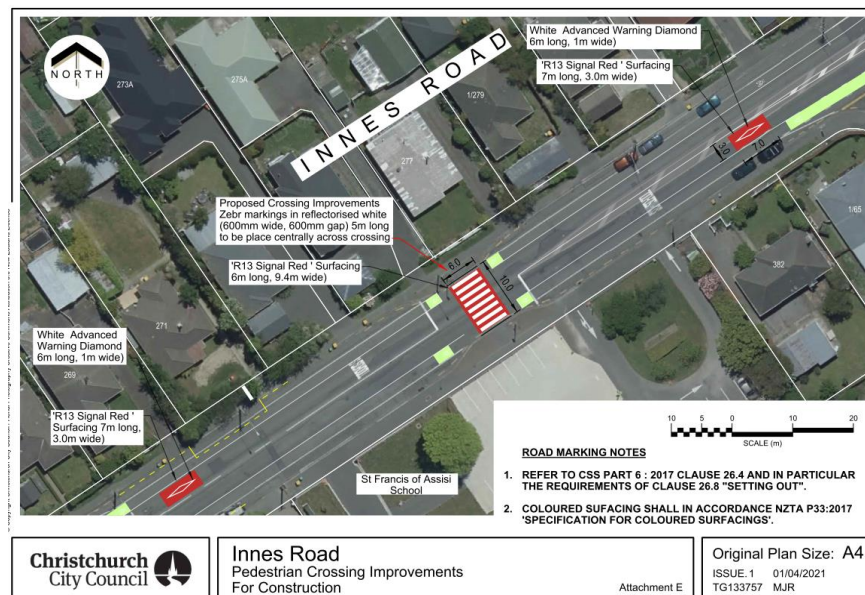


Fig 2: St Francis of Assisi School

3.4.3 Westminster Park Development

Recreation and Sport staff have provided the following advice on how space at Westminster Park is allocated.

- All sports fields on community parks are allocated to clubs through the Regional Sports Organisation. The Council does not allocate fields to clubs directly. This process takes place bi-annually for summer and winter sport. When not in use for training and games, the parks remain accessible for the community to use.

- From time to time through the allocation process the Council reconfigures fields in response to changing sports needs and growth in certain areas. The St Albans area has experienced huge growth in junior sports participation over the past two years. This is evident across cricket, football and rugby.
- Through the 2021 winter sports allocation process it became evident that the winter sports in the Westminster Park area were all experiencing increased participation numbers in their junior membership. This has resulted in a reconfiguration of Westminster Park to include a senior and a junior rugby field. The senior rugby field enables two junior games to be played in the morning. There is also a senior football field and football training space on the park. A junior rugby field has also been added at MacFarlane Park to assist with pressure on Westminster Park.
- The Council Parks Operations team drained two springs on Westminster Park in December 2020. This work enabled some parts of the park to be used for sport that have not been available since the earthquakes.

Regarding the future of the buildings, we have the following information:

- 280 Westminster Street – This building is currently vacant after the Fulton Hogan lease expired. We understand there is a community group applying to lease the building.
- 278 and 276 Westminster Street – these buildings are currently vacant and due for demolition (budgeted for FY25/26).

3.4.3 Customer Services – Hybris Report for the Papanui-Innes Wards

Refer to **Attachment A** for the month of May 2021 statistics.

3.4.4 Public Toilet Facilities – Shared use pathway CNC corridor

At its meeting on 21 May 2021 the Board, prompted by correspondence from a member of the public asking for public toilet facilities for those using the Northern Corridor Shared Use Path (SUP) as a recreation route, had requested that staff investigate installing signage to raise awareness of existing facilities.

Accordingly staff have identified three public toilet facilities located as follows:

- Owen Mitchell Park
- Belfast Cemetery
- Waimakariri Regional River Park (Northside).

Directional signage will be erected on the SUP adjacent to the entrance to these toilets in June 2021.

3.4.5 Road Cones

At the 5 May Board meeting and again on 21 May the Board raised the subject of whose responsibility it was to retrieve road cones on completion of road works.

Staff from the Traffic Management Team advised that all road works are contracted out, therefore it is the responsibility of the contractor/s to collect the cones once the work has been completed. The cones should be marked with the name of the contractor therefore when Board members or the public come across cones that are no longer required then use the Snap, Send, Solve app or the Council Call Line after ascertaining which company they belong to.

4. Advice Provided to the Community Board

4.1 Information circulated to the Board:

- CCC: Smokefree 2025 Action Plan proposal – Council staff submission (*circulated 3 May 2021*)
- SWN: Northcote water supply mains renewal (*circulated 5 May 2021*)
- CCC: Email re maintenance issues on cycleway between Langdons and Sawyers Arms Roads (*circulated 6 May 2021*)
- CCC: Email re Northcote/Cavendish and Northfield/Northcote Intersections (*circulated 11 May 2021*)
- SWN: Papanui and St Albans – wastewater renewals (*circulated 12 May 2021*)
- CCC: Copy of letter to Flockton and Francis Street residents re traffic (*circulated 13 May 2021*)
- CCC: Email Feedback Requested for Council Submissions on 1. Smokefree 2025 Action Plan and 2. Waka Kotahi - new rule for setting speed limits (*circulated 14 May 2021*)
- CCC: Two issues re traffic in the Innes Ward (*circulated 14 May 2021*)
- CCC: Otautahi Christchurch Climate Change Strategy – Information update (*circulated 18 May 2021*)
- CCC: Consultation on Proposed Replacement Freedom Camping Bylaw 2021 (*circulated 18 May 2021*)
- CCC: Bus Stop seat at 276 Wairakei Road – Garry Roberts 5 March 2021 (*circulated 19 May 2021*)
- Email forwarded from Sarah Walker re Francis Avenue and the DEMP (*circulated 19 May 2021*)
- CCC: DEMP Traffic Monitoring Data 21 May 2021 (*circulated 26 May 2021*)
- CCC: Public Toilets on the Shared User Path adjacent to the ChCh Northern Corridor (*circulated 26 May 2021*)
- CCC: Response to Board member's query re Alcohol Licence application 1 Radcliffe Road (*circulated 28 May 2021*)
- CCC: Speed Camera Deployment Sites (NZ Police) (*circulated 27 May 2021*)

4.2 Memoranda sent to the Board:

- CCC Alcohol Licence Memo: 505a Papanui Road (*circulated 5 May 2021*)
- CCC Alcohol Licence Memo: 135 Geraldine Street (*circulated 5 May 2021*)
- CCC Alcohol Licence Memo: 159 Cranford Street (*circulated 14 May 2021*)
- CCC Alcohol Licence Memo: 26 Main North Road (*circulated 20 May 2021*)
- CCC Practical Completion of CNC Downstream Works (*circulated 25 May 2021*)
- CCC Alcohol Licence Memo: 1/48 Solomon Avenue (*circulated 26 May 2021*)
- CCC Alcohol Licence Memo: 1 Radcliffe Road (*circulated 26 May 2021*)
- CCC Alcohol Licence Memo: 30 Morrison Avenue (*circulated 4 Jun 2021*)

Attachments / Ngā Tāpirihanga

No.	Title	Page
A ↓	Papanui Innes Community Board Hybris Report 19 May 2021	25

Signatories / Ngā Kaiwaitohu

Authors	Aidan Kimberley - Community Board Advisor Lyssa Aves - Governance Support Officer
Approved By	Elizabeth Hovell - Manager Community Governance, Papanui-Innes Matthew Pratt - Manager Community Governance, Halswell-Hornby-Riccarton John Filsell - Head of Community Support, Governance and Partnerships

Ticket Report

Papanui-Innes

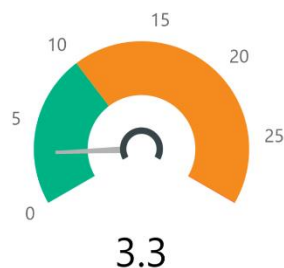
19 Apr 2021 - 18 May 2021

Report date:
19/05/2021

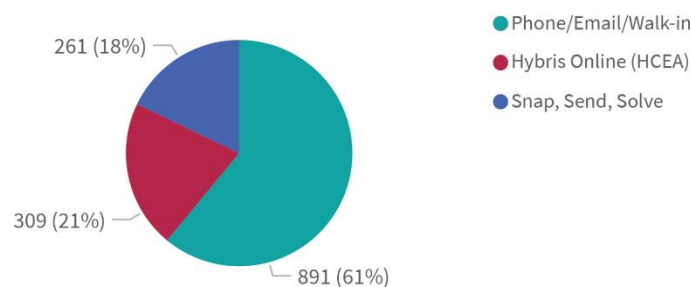
305
Open Tickets

1509
Tickets Closed/Resolved

Average days to complete ticket



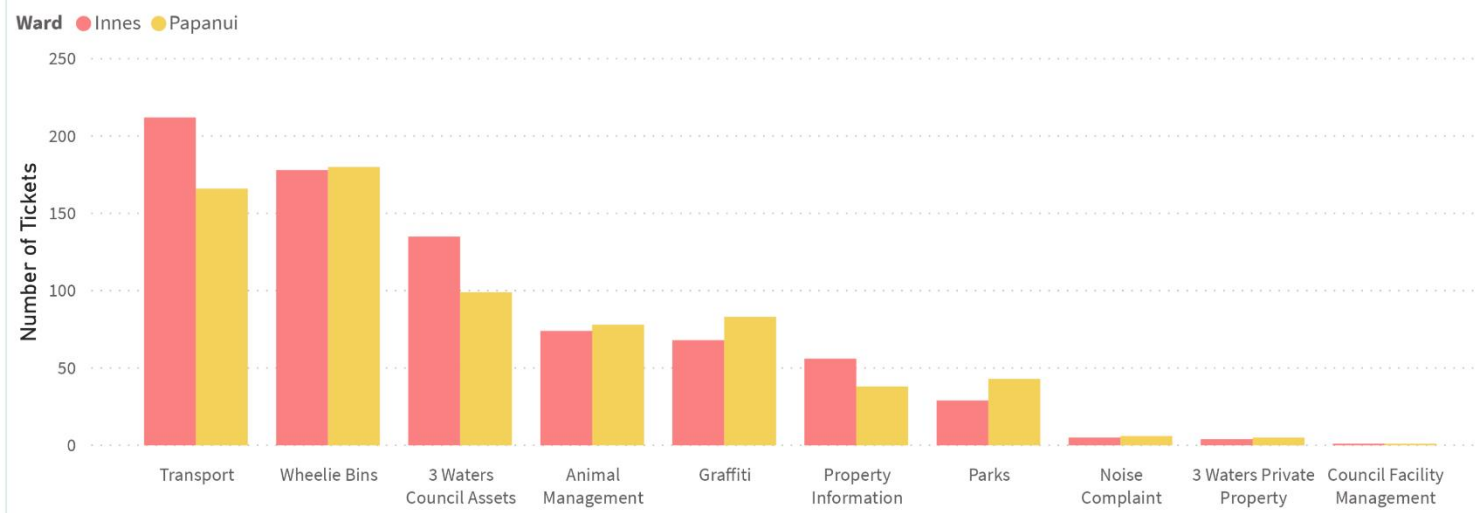
Channels



Top 10 Issues

Object Category	# Tickets
Bin Not Collected	152
Leak (Water Supply)	133
Litter (Road)	122
Damaged Bin	107
Graffiti	93
Residential Property Files	87
Road Asset (e.g.footpath,road,furniture)	49
Graffiti on Utility box	46
Found dog	42
Missing Bin	37

Tickets by Incident Category



10. Elected Members' Information Exchange Te Whakawhiti Whakaaro o Te Kāhui Amorangi

This item provides an opportunity for Board Members to update each other on recent events and/or issues of relevance and interest to the Board.