

Waikura
Linwood-Central-Heathcote Community Board
AGENDA

Notice of Meeting:

An ordinary meeting of the Waikura/Linwood-Central-Heathcote Community Board will be held on:

Date: Wednesday 28 April 2021
Time: 4.30pm
Venue: The Board Room, 180 Smith Street,
Linwood

Membership

Chairperson	Alexandra Davids
Deputy Chairperson	Michelle Lomax
Members	Sunita Gautam
	Yani Johanson
	Darrell Latham
	Tim Lindley
	Jake McLellan
	Jackie Simons
	Sara Templeton

22 April 2021

Arohanui Grace
Manager Community Governance, Linwood-Central-Heathcote
941 6663
arohanui.grace@ccc.govt.nz
www.ccc.govt.nz

Note: The reports contained within this agenda are for consideration and should not be construed as Council policy unless and until adopted. If you require further information relating to any reports, please contact the person named on the report.

To view copies of Agendas and Minutes, visit:

<https://www.ccc.govt.nz/the-council/meetings-agendas-and-minutes/>



Developing Resilience in the 21st Century

Strategic Framework

Whiria ngā whenu o ngā papa,
honoa ki te maurua tāuiki

Bind together the strands of each mat and join
together with the seams of respect and reciprocity

Ōtautahi-Christchurch is a city of opportunity for all

Open to new ideas, new people and new ways of doing things – a city where anything is possible

Principles

Being open,
transparent and
democratically
accountable

Promoting
equity, valuing
diversity and
fostering inclusion

Taking an inter-generational approach
to sustainable development,
prioritising the social, economic
and cultural wellbeing of
people and communities
and the quality of the
environment, now
and into the
future

Building on the
relationship with
Te Rūnanga o Ngāi Tahu
and the Te Hōnonga-Council
Papatipu Rūnanga partnership,
reflecting mutual understanding
and respect

Actively collaborating and
co-operating with other
local, regional
and national
organisations

Ensuring
the diversity
and interests of
our communities
across the city and the
district are reflected in
decision-making

Community Outcomes

Resilient communities

Strong sense of community
Active participation in civic life
Safe and healthy communities
Celebration of our identity
through arts, culture, heritage,
sport and recreation
Valuing the voices of all cultures
and ages (including children)

Liveable city

Vibrant and thriving city centre
Sustainable suburban and
rural centres
A well connected and accessible
city promoting active and
public transport
Sufficient supply of, and
access to, a range of housing
21st century garden city
we are proud to live in

Healthy environment

Healthy water bodies
High quality drinking water
Unique landscapes and
indigenous biodiversity are
valued and stewardship
exercised
Sustainable use of resources
and minimising waste

Prosperous economy

Great place for people, business
and investment
An inclusive, equitable economy
with broad-based prosperity
for all
A productive, adaptive and
resilient economic base
Modern and robust city
infrastructure and community
facilities

Strategic Priorities

Enabling active
and connected
communities
to own their future

Meeting the challenge
of climate change
through every means
available

Ensuring a high quality
drinking water supply
that is safe and
sustainable

Accelerating the
momentum
the city needs

Ensuring rates are
affordable and
sustainable

Ensuring we get core business done while delivering on our Strategic Priorities and achieving our Community Outcomes

Engagement with
the community and
partners

Strategies, Plans and
Partnerships

Long Term Plan
and Annual Plan

Our service delivery
approach

Monitoring and
reporting on our
progress

Part A	Matters Requiring a Council Decision
Part B	Reports for Information
Part C	Decisions Under Delegation

TABLE OF CONTENTS

Karakia Timatanga	4
C 1. Apologies / Ngā Whakapāha.....	4
B 2. Declarations of Interest / Ngā Whakapuaki Aronga	4
C 3. Confirmation of Previous Minutes / Te Whakaāe o te hui o mua	4
B 4. Public Forum / Te Huinga Whānui.....	4
B 5. Deputations by Appointment / Ngā Huinga Whakaritenga	4
B 6. Presentation of Petitions / Ngā Pākikitanga.....	4

STAFF REPORTS

C 7. Linwood Village Master Plan - Project C1 - Playful Children's Artwork.....	15
C 8. Linwood Park - Easements over Reserve -	27
C 9. Waikura/Linwood-Central-Heathcote Community Board Area Report - April 2021	31
B 10. Elected Members' Information Exchange / Te Whakawhiti Whakaaro o Te Kāhui Amorangi.....	41

Karakia Whakamutunga

Karakia Timatanga

1. Apologies / Ngā Whakapāha

At the close of the agenda no apologies had been received.

2. Declarations of Interest / Ngā Whakapuaki Aronga

Members are reminded of the need to be vigilant and to stand aside from decision making when a conflict arises between their role as an elected representative and any private or other external interest they might have.

3. Confirmation of Previous Minutes / Te Whakaāe o te hui o mua

That the minutes of the Waikura/Linwood-Central-Heathcote Community Board meeting held on [Wednesday, 14 April 2021](#) be confirmed (refer page 5).

4. Public Forum / Te Huinga Whānui

A period of up to 30 minutes will be available for people to speak for up to five minutes on any issue that is not the subject of a separate hearings process.

5. Deputations by Appointment / Ngā Huinga Whakaritenga

Deputations may be heard on a matter or matters covered by a report on this agenda and approved by the Chairperson.

There were no deputations by appointment at the time the agenda was prepared.

6. Presentation of Petitions / Ngā Pākikitanga

There were no petitions received at the time the agenda was prepared.

Waikura/ Linwood-Central-Heathcote Community Board OPEN MINUTES

Date: Wednesday 14 April 2021
Time: 4.32pm
Venue: The Board Room, 180 Smith Street,
Linwood

Present

Chairperson	Alexandra Davids
Deputy Chairperson	Michelle Lomax
Members	Sunita Gautam
	Yani Johanson
	Darrell Latham
	Tim Lindley
	Jake McLellan
	Jackie Simons
	Sara Templeton

14 April 2021

Arohanui Grace
Manager Community Governance, Linwood-Central-Heathcote
941 6663
arohanui.grace@ccc.govt.nz
www.ccc.govt.nz

To view copies of Agendas and Minutes, visit:
www.ccc.govt.nz/the-council/meetings-agendas-and-minutes/

Part A Matters Requiring a Council Decision

Part B Reports for Information

Part C Decisions Under Delegation

Karakia Timatanga:

The agenda was dealt with in the following order.

1. Apologies / Ngā Whakapāha

Part C

Community Board Resolved LCHB/2021/00018

That the apologies from Sunita Gautam and Michelle Lomax for absence and the apology for lateness from Sara Templeton be received.

Jake McLellan/Jackie Simons

Carried

2. Declarations of Interest / Ngā Whakapuaki Aronga

Part B

There were no declarations of interest recorded.

3. Confirmation of Previous Minutes / Te Whakaāe o te hui o mua

Part C

Community Board Resolved LCHB/2021/00019

That the minutes of the Waikura/Linwood-Central-Heathcote Community Board meeting held on Wednesday, 31 March 2021 be confirmed with the following amendment:

Clause 8 - the spelling of Adrienne Carmichael be corrected.

Tim Lindley/Jackie Simons

Carried

4. Public Forum / Te Huinga Whānui

Part B

4.1 Radley Street Vehicle Speed Concerns

Paul McMahon, local resident, spoke to the Board regarding concerns about the speed of vehicles on Radley Street and shared his ideas on how the speed could be mitigated.

After questions from members, the Chairperson thanked Mr McMahon for his presentation.

The Board requested staff to reassess and update the 2018 staff advice on residents' speeding concerns in Radley Street in light of the current 2021 environment.

Attachments

- A Linwood-Central-Heathcote Community Board Meeting Public Forum: Paul McMahon Pictures of Radley Street 14 April 2021

4.2 Radley Street and Wider Area Vehicle Speed Concerns

Anna Herbert, local resident, spoke to the Board regarding vehicle speed concerns on Radley Street and the wider neighbourhood.

Ms Herbert requested progress in finding solutions for this issue.

After questions from members, the Chairperson thanked Ms Herbert for her presentation.

5. Deputations by Appointment / Ngā Huinga Whakaritenga

Part B

5.1 Correspondence: Noise Level at Linwood-Central-Heathcote Events

Paul McMahon, addressed the Board regarding his correspondence to the Board on the level of sound at community events in the Waikura/Linwood-Central-Heathcote Community Board area.

After questions from members, the Chairperson thanked Mr McMahon for his presentation.

Item 7 of these minutes refers.

5.2 Bays Skate Park and Sumner Village Green – Landscape Plan Approval

Jens Christensen, resident, addressed the Board regarding the Bays Skate Park and Sumner Village Green – Landscape Plan Approval. Mr Christensen suggested that the design provide for the provision of lighting and security cameras.

After questions from members, the Chairperson thanked Mr Christensen for his presentation.

Item 9 of these minutes refers.

6. Presentation of Petitions / Ngā Pākikitanga

Part B

There was no presentation of petitions.

7. Correspondence

Board Comment

1. In its deliberations, the Board considered the information provided in the deputation from Paul McMahon (Item 5.1 of these minutes refers).

Officer Recommendations / Ngā Tūtohu

That the Linwood-Central-Heathcote Community Board:

1. Receives the information in the correspondence report dated 14 April 2021.

Community Board Resolved LCHB/2021/00020

Part B

That the Linwood-Central-Heathcote Community Board:

1. Receives the information in the correspondence report dated 14 April 2021.
2. Requests staff advice on the management of noise levels at community events as part of Health and Safety and Accessibility processes, and clarification of the Council's role in mitigating noise levels at events.
3. Receives the tabled correspondence from Mr Scott Cunnold regarding the Bays Area Skatepark.

Tim Lindley/Darrell Latham

Carried

Attachments

- A Correspondence: Mr Scott Cunnold Bays Area Skatepark - 14 April 2021

Sara Templeton joined the meeting at 5:07 pm.

11. Badminton Canterbury Incorporated - Lease for Badminton Hall at 220 Pages Road

Community Board Resolved LCHB/2021/00021 Original Officers recommendations accepted without change)

Part C

That the Waikura/Linwood-Central-Heathcote Community Board:

1. Grants a lease to Badminton Canterbury over that area of land at Cuthberts Green being approximately 1596sqm and being part of the land described as Section 4 SO 470186 Registered Title 667331 as shown on the plan attached in Attachment B attached to the meeting agenda report.
2. Approves the lease for a period of 33 years including renewals at an annual rental set in accordance with the Council's Sports Lease Charges Policy.
3. Authorises the Manager Property Consultancy to conclude and administer the terms and conditions of the lease.

Jake McLellan/Jackie Simons

Carried

8. Hearings Report to the Waikura/Linwood-Central-Heathcote Community Board on the Colombo Street Cycle Route Connection

Community Board Resolved LCHB/2021/00022 (Original staff recommendations accepted without change)

Part C

That the Waikura/Linwood-Central-Heathcote Community Board:

1. Approves the Scheme Design SK001-SK003 dated 24 February 2021, Issue 3 (Attachment A) on the Colombo Street Cycle Connection to progress to detailed design and construction, with the following amendments:
 - a. Requests staff to ensure that there is no reduction in short term parking on Colombo Street in the area immediately south of Bealey Avenue.
2. Approves the following associated detailed stopping and parking resolutions for the Colombo Street Cycle Route Connection subject to the amendments in recommendation 1a above.

Current Colombo Street Corridor - Bealey Avenue to Salisbury Street - Traffic Controls, Stopping and Parking

- a. Approves that any previously approved resolutions on Colombo Street from its intersection with Bealey Avenue to its intersection with Salisbury Street, pertaining to traffic controls (excluding the speed limit), parking restrictions and stopping restrictions, made pursuant to any Bylaw, to the extent that they are in conflict with the traffic controls, parking and stopping resolutions described in recommendations b-y below, are revoked.

Colombo Street Corridor - Bealey Avenue to Salisbury Street - Stopping and Parking

- b. Approves that the stopping of vehicles be prohibited at any time on the east side of Colombo Street commencing at its intersection with Bealey Avenue, and extending in a southerly direction for a distance of 12 metres.
- c. Approves that the parking of vehicles be restricted to a maximum period of 60 minutes on the east side of Colombo Street commencing at a point 12 metres south of its intersection with Bealey Avenue, and extending in a southerly direction for a distance of 10 metres.
- d. Approves that the stopping of vehicles be prohibited at any time on the east side of Colombo Street commencing at a distance 22 metres south of its intersection with Bealey Avenue, and extending in a southerly direction for a distance of 26 metres.
- e. Approves that the parking of vehicles be restricted to a maximum period of 60 minutes on the east side of Colombo Street commencing at a distance 57 metres south of its intersection with Bealey Avenue, and extending in a southerly direction for a distance of 36 metres.
- f. Approves that the stopping of vehicles be prohibited at any time on the east side of Colombo Street commencing at a distance 99 metres south of its intersection with Bealey Avenue, and extending in a southerly direction for a distance of three metres.
- g. Approves that the stopping of vehicles be prohibited at any time on the east side of Colombo Street commencing at a point 156 metres south of its intersection with Bealey Avenue, and extending in a southerly direction for a distance of 25 metres.
- h. Approves that a bus stop be installed on the east side of Colombo Street commencing at a point 181 metres south of its intersection with Bealey Ave, and extending in a southerly direction for a distance of 15 m.
- i. Approves that the stopping of vehicles be prohibited at any time on the east side of Colombo Street commencing at a point 196 metres south of its intersection

with Bealey Avenue, and extending in a southerly direction for a distance of five metres.

- j. Approves that the stopping of vehicles be prohibited at any time on the east side of Colombo Street commencing at a point 218 metres south of its intersection with Bealey Avenue, and extending in a southerly direction for a distance of three metres.
- k. Approves that the parking of vehicles be restricted to a maximum period of 120 minutes on the east side of Colombo Street commencing at a point 229 metres south of its intersection with Bealey Avenue, and extending in a southerly direction for a distance of 22 metres.
- l. Approves that the stopping of vehicles be prohibited at any time on the east side of Colombo Street commencing at a point 264 metres south of its intersection with Bealey Avenue, and extending in a southerly direction for a distance of 26 metres.
- m. Approves that a bus stop be installed on the east side of Colombo Street commencing at a point 290 metres south of its intersection with Bealey Avenue, and extending in a southerly direction for a distance of 15 metres.
- n. Approves that the stopping of vehicles be prohibited at any time on the east side of Colombo Street commencing at a distance 305 metres south of its intersection with Bealey Avenue, and extending in a southerly direction to its intersection with Salisbury Street.
- o. Approves that the stopping of vehicles be prohibited at any time on the west side of Colombo Street commencing at its intersection with Bealey Avenue, and extending in a southerly direction for a distance of 49 metres.
- p. Approves that the parking of vehicles be restricted to a maximum period of 60 minutes on the west side of Colombo Street commencing at a point 49 metres south of its intersection with Bealey Avenue, and extending in a southerly direction for a distance of 48 metres.
- q. Approves that the stopping of vehicles be prohibited at any time on the west side of Colombo Street commencing at a point 97 metres south of its intersection with Bealey Avenue, and extending in a southerly direction for a distance of 18 metres.
- r. Approves that a bus stop be installed on the west side of Colombo Street commencing at a point 115 metres south of its intersection with Bealey Avenue, and extending in a southerly direction for a distance of 15 metres.
- s. Approves that the stopping of vehicles be prohibited at any time on the west side of Colombo Street commencing at a point 130 metres south of its intersection with Bealey Avenue, and extending in a southerly direction for a distance of 12 metres.
- t. Approves that the stopping of vehicles be prohibited at any time on the west side of Colombo Street commencing at a distance 164 metres south of its intersection with Bealey Avenue, and extending in a southerly direction for a distance of three metres.
- u. Approves that the stopping of vehicles be prohibited at any time on the west side of Colombo Street commencing at a point 220 metres south of its intersection

with Bealey Avenue, and extending in a southerly direction for a distance of three metres.

- v. Approves that the parking of vehicles be restricted to a maximum period of five minutes on the west side of Colombo Street commencing at a point 254 metres south of its intersection with Bealey Avenue, and extending in a southerly direction for a distance of 7.5 metres. This restriction is to apply at any time.
- w. Approves that the stopping of vehicles be prohibited at any time on the west side of Colombo Street commencing at a point 268 metres south of its intersection with Bealey Avenue, and extending in a southerly direction for a distance of five metres.
- x. Approves that a bus stop be installed on the west side of Colombo Street commencing at a point 323 metres south of its intersection with Bealey Avenue, and extending in a southerly direction for a distance of 15 metres.
- y. Approves that the stopping of vehicles be prohibited at any time on the west side of Colombo Street commencing at a point 338 metres south of its intersection with Bealey Avenue, and extending in a southerly direction to its intersection with Salisbury Street.

Sara Templeton/Jake McLellan

Carried

Yani Johanson requested that his vote against the resolutions be recorded.

9. Bays Skate Park and Sumner Village Green - Landscape plan approval

Board Comment

Staff in attendance spoke to the accompanying report and clarified that while there is no current proposal to provide security cameras or lighting the design will incorporate ducting to allow for installation of these at a later date if needed.

The Board expressed their thanks to all Elected Members, staff and community members involved in this project, and their excitement for this momentous decision.

1. The Board also took into consideration the deputation from Jens Christensen (Item 5.2 of these minutes refers) and the tabled correspondence from Mr Scott Cunbold.

Community Board Resolved LCHB/2021/00023 (Original officer recommendations accepted without change)

Part C

That the Waikura/Linwood-Central-Heathcote Community Board:

1. Approves the landscape plan for the construction of a skate park at 26 Nayland Street, Sumner as per attachment A (Job No. 1292 Drawing No. C02, dated March 03, 2021)
2. Approves the landscape plan for the Sumner Village Green at 20/24 Nayland Street Sumner as per attachment B (Job No. 1292 dated March 03, 2021).
3. Approves the name Sumner Village Green for the entire site of the Bays Skate Park and Sumner Village Green which encompasses 20, 24 and 26 Nayland Street, Sumner (Lot 1, Lot 2 DP 3273 and Lot 1 DP 5823, note that the area outside of the Cliff Collapse

Management Area will form the Sumner Village Green and the area within the Cliff Collapse Management Area will be fenced off and access closed to the public).

4. Notes that the preferred use of 20-24 Nayland Street by the community is a public open space / village green, and not an off-street car parking facility as shown in the 2013 Sumner Village Centre Master Plan (project P4.3B)."

Sara Templeton/Darrell Latham

Carried

10. Cutler Park Renewal

Community Board Resolved LCHB/2021/00024 (Original officers recommendations accepted without change)

Part C

That the Waikura/Linwood-Central-Heathcote Community Board:

1. Receives the information on Cutler Park Renewal.

Jackie Simons/Yani Johanson

Carried

Jake McLellan left the meeting at 5:46 pm.

Jake McLellan returned to the meeting at 5:49 pm.

12. Elected Members' Information Exchange / Te Whakawhiti Whakaaro o Te Kāhui Amorangi

Part B

The Board exchanged information on the following:

- The Board discussed the process for the formulation of Board submissions.
- The Friends of Linwood Cemetery have developed a proposal for a permanent wreath/remembrance site.
- There will be memorial ceremony at the Waltham Park gates at 10am on ANZAC day.

12.1 Council Draft Long Term Plan 2021-31 – Additional Submission Point to Board Submission

The Board discussed including points from Redcliffs Residents Association recent email to Board members and staff regarding the timing of the Redcliffs Village (Main Road Masterplan) works forward in the Long Term Plan consideration

The Board agreed to request that that following additional submission point be added to the Community Board's Christchurch City Council Draft Long Term Plan 2021-31 submission.

The Linwood-Central-Heathcote Community Board advocates for the retention of all of the Suburban master plan projects and in particular the Main Road master plan. This has and continues to be a Board priority.

Karakia Whakamutunga:

Meeting concluded at 6:07pm.

CONFIRMED THIS 28th DAY OF APRIL 2021.

ALEXANDRA DAVIDS
CHAIRPERSON

Unconfirmed

Item 3 - Minutes of Previous Meeting 14/04/2021

7. Linwood Village Master Plan - Project C1 - Playful Children's Artwork

Reference / Te Tohutoro: 20/227057

Report of / Te Pou
Matua:

Josh Neville, Urban Regeneration Planner, josh.neville@ccc.govt.nz

General Manager /
Pouwhakarae:

Carolyn Gallagher, General Manager Infrastructure, Planning and
Regulatory Services

1. Executive Summary / Te Whakarāpopoto Matua

Purpose of Report

- 1.1 The purpose of this report is for the Waikura/Linwood Central Heathcote Community Board (the Board) to:
 - 1.1.1 Receive information about the Linwood Village Master Plan Project C1 – Doris Lusk Reserve Playful Children's Artwork.
 - 1.1.2 Receive information about the commissioning of selected Artwork – The Pumping Station – per the Council's Artworks in Public Places Policy, 2002.
 - 1.1.3 Approve an alteration to the Landscape plan at Doris Lusk Reserve.

Significance of Report

- 1.2 The decisions in this report are of low significance in relation to the Christchurch City Council's Significance and Engagement Policy. The level of significance was determined by:
 - 1.2.1 The limited number of affected people
 - 1.2.2 The easily reversible nature of the decisions.
 - 1.2.3 The high level of engagement with the community in the development and scoping of this project.

Key Points

- 1.3 The project - Doris Lusk Reserve Playful Children's Artwork – is a commission of an original artwork for the Doris Lusk Reserve in Linwood Village.
- 1.4 This project was initiated as part of delivering the Linwood Village Master Plan, 2012.
- 1.5 An artist brief co-design process was carried out with the community in mid-2019. Through this, community shared their views on a potential artwork and these are detailed in Attachment A.
- 1.6 A call for concepts was announced in December 2020 – in which seven high quality submissions were received.
- 1.7 On Wednesday 03 March 2021 a selection panel was convened recommending the Council commission the artwork – *The Pumping Station*, by artists Natasha English and Tatyanna Meharry (both grand-daughters of Doris Lusk).
- 1.8 A staff technical panel has reviewed the artwork concept regarding it as robust and easily maintained.

- 1.9 The decisions in this report support delivering the Council's Long Term Plan 2018 – 2028 – Project: 39154 Linwood Village - Design & Install Childrens Interactive Play Art (C1). Funding of \$51,695.00 was allocated for this project.
- 1.10 The decisions and process followed to commission this artwork are in compliance with the Artworks in Public Places Policy 2002.
- 1.11 The Board has the delegation to make these decisions, as per the current delegations register.
- 1.12 The following feasible options have been considered:
 - Option 1 – Commission the artwork '*The Pumping Station*' and make the alterations required to Doris Lusk Reserve (Recommended Option)
 - Option 2 – Discontinue the project
- 1.13 Option1 is recommended.
 - 1.13.1 The advantages of this option include:
 - Improvement to the Doris Lusk Reserve
 - Supporting community aspirations
 - Delivering on commitments made during the Master Plan process
 - 1.13.2 The disadvantages of this option include:
 - An asset requiring maintenance and subsequent ongoing operational funding
 - No operational funding has been allocated for this artwork

2. Officer Recommendations / Ngā Tūtohu

That the Waikura/Linwood-Central-Heathcote Community Board:

1. Endorse staff proceeding with the *Linwood Village Master Plan Project C1 – Doris Lusk Reserve Playful Children's Artwork* commissioned as per the Artworks in Public Places Policy, 2002 - Community Artwork process
2. Receive information on the commission of the artwork recommended by the selection panel - *The Pumping Station*, by artists Natasha English and Tatyanna Meharry
3. Adopt the changes to the Doris Lusk Reserve Landscape Plan as shown in the revised plan (Attachment C)

3. Reason for Report Recommendations / Ngā Take mō te Whakatau

- 3.1 In preparing this report and making a recommendation, staff considered and made their recommendation based on the following criteria:
 - The recommendation of the selection panel
 - Timeframes for delivery
 - Costs/funding
 - Community expectations
 - Inclusion of the community in the decision making
 - Competing priorities for regeneration assistance
 - Alignment with the project objectives
 - Alignment with the Council's policies

- Impact on the private sector confidence in regeneration.
- 3.2 The recommendations have been prepared in line with the Council's policies and Long Term Plan.
- 3.3 In order to complete the commissioning of the artwork, the project team will follow the process dictated by the Artworks in Public Places Policy, 2002. This commission of a community artwork follows the Community Artworks process in Appendix 6 of the policy.
- 3.4 The process includes a Project Selection Panel, who met on 3 March 2021 and included a local Community Board representative. The role of the selection panel was to input into decisions related to the site, artwork selection, project working party reviews and any other matters. This panel unanimously agreed to select the recommended artwork.
- 3.5 Commencing the project delivers on the community expectation that a piece of artwork is to be installed and that the community will be involved in the process.
- 3.6 Proceeding with the project builds on the relationship and engagement with the community that has occurred to date, through a transparent and clear process.

4. Alternative Options Considered / Ētahi atu Kōwhiringa

- 4.1 The alternative option considered in preparing this report was to not proceed with this project.
- 4.2 This alternative option was discounted. The reason for this is the disadvantages exceeded the advantages.
 - 4.2.1 The advantages of not proceeding with this project are:
 - Operational and Capital cost savings due to not commissioning the artwork, as well as additional operational costs not required for future maintenance.
 - Staff would be able to resource other projects and priorities, particularly other projects associated with revitalisation of the Linwood Village/Inner City East area.
 - Additional operational budget would not be required to maintain the artwork.
 - 4.2.2 The disadvantages of not proceeding are that:
 - This decision may not be acceptable to the community. The community are expecting the Council to deliver the project as stated in the Long Term Plan and the Linwood Village Master Plan. A lack of delivery on the Council's components and actions in the master plan may negatively impact private sector confidence in Linwood Village and impede regeneration.
 - The aspirations of the community, as articulated through consultation exercises that informed content of the artists brief, are not met.
 - The outcomes of the project are not achieved. Negative activity currently associated with Doris Lusk Reserve may persist as CPTED issues remain.
 - The decision to not deliver the project may perpetuate negative perceptions towards Linwood Village revitalisation.

5. Detail / Te Whakamahuki

Background

Linwood Village Master Plan

- 5.1 The Linwood Village Master Plan and subsequent commitment of funding in the 2018-2028 Long Term Plan has enabled the commencement of Project C1 Design and install Interactive Play Art for Children in the Doris Lusk Park – Now named Doris Lusk Reserve Interactive Artwork for Children (shown in figure 1).



Figure 1: Doris Lusk Reserve Schema from Linwood Village Master Plan - Showing location for Sculptural Play Feature

- 5.2 This project will assist in achieving the Master Plan goal for an attractive built environment.
- 5.3 The rationale for this project as stated in the master plan is to:
- 5.3.1 Contribute to the character of Doris Lusk Reserve as a public space and the centre of the village, with strong links to the Linwood Community Arts Centre
 - 5.3.2 Respect the 2008 Landscape concept plan
 - 5.3.3 Improve the southern boundary with the Linwood Bible Chapel
 - 5.3.4 Increase attractiveness in order to encourage activity in the Reserve to contribute to a vibrant and safe village
 - 5.3.5 Retain and enhance the space for festivals and music to be held in the Reserve.

Community Co-design Conversations

- 5.4 The above rationale remain relevant and were confirmed through a community co-design conversation in mid-2019 to develop a collaborative artist brief. Refer Attachment A. The community was invited to participate at three events held on the site, workshops were held with local children, and a several weeks-long display in the Linwood Community Arts Centre

occurred. Advertisements of these activities were published in News-On-Ice which was delivered to 3000 local households and available at local business and community premises.

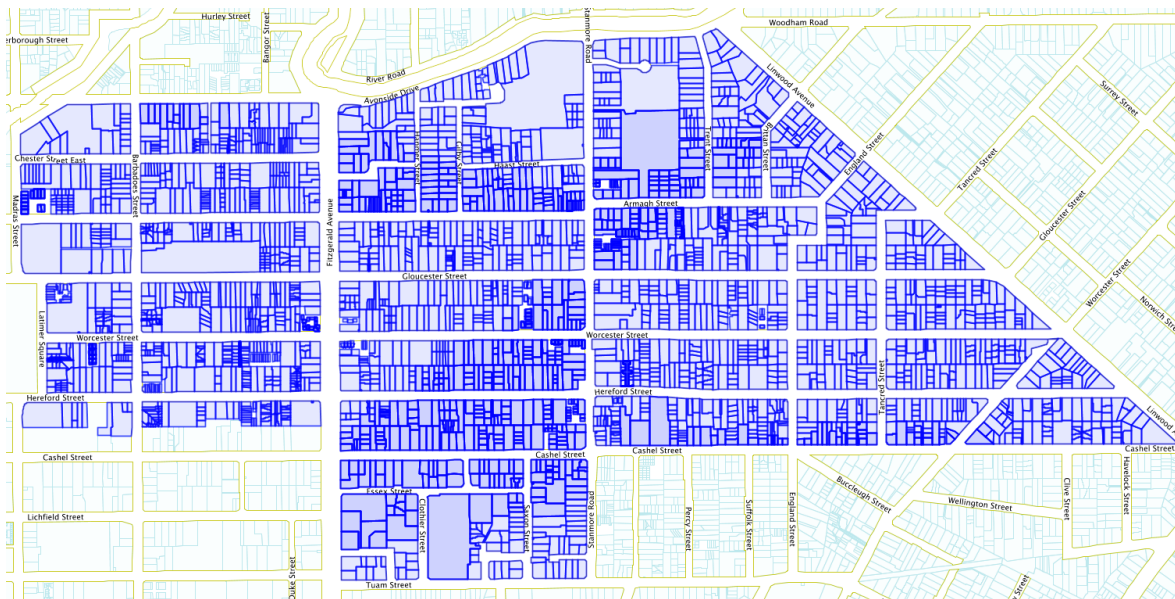


Figure 1 - News-On-Ice distribution map

- 5.5 Key themes that emerged from this process were for the project to:
 - 5.5.1 Develop a distinctive, interactive feature artwork that will assist in attracting families and children to Doris Lusk Reserve and to help discourage other undesirable use
 - 5.5.2 See art in the context of this project as 'Art as experience' rather than 'Art as object'
 - 5.5.3 Reflect children's experiences and desires in the final brief
 - 5.5.4 Address broader issues of poor visual amenity and low perceptions of safety to improve Doris Lusk Reserve
 - 5.5.5 Recognise Doris Lusk (the artist) in the Reserve better
- 5.6 There is a desire by the community that, throughout the delivery of the project, effort is made to harness their ability to participate, their knowledge and their skills. This strengthens community capacity and ensures ongoing local buy-in with this project.
- 5.7 Community input into this project has been a key element of the project.
- 5.8 These engagements with the wider community confirmed a desire for the project to proceed, and outlined the broad aspirations for the scope of the artwork brief.

Artwork Call for Concept and Selection Process

- 5.9 In December 2020 a call for submissions was sent out to Christchurch-based artists to design a stand-alone piece of playful artwork, which will help to reframe the purpose of Doris Lusk Reserve as a place for children and families, and enhance the reserves' relationship with the Linwood Community Arts Centre.
- 5.10 Seven submissions were received.
- 5.11 Technical Staff reviewed each of the artwork concept submissions.
- 5.12 A selection panel was convened on 03 March 2021. This panel consisted of representatives from the Linwood Community Arts Centre, a Council Community Arts Advisor, a Community Board member (Lin-Cen-Hea), and youth representatives from Linwood College.

- 5.13 The panel made a unanimous decision to recommend the commission of *The Pumping Station* by artists Tatyanna Meharry and Natasha English. Both artists are grand-daughters of Doris Lusk, grew up in the neighbourhood, and continue to have strong links artistically and to the community.

Policy

- 5.14 The project, commissioning, selection process and reporting is in accordance with the Artworks in Public Places Policy, 2002.

Location

- 5.15 The decision affects the following wards/Community Board areas:

5.15.1 Central Ward, namely Linwood Village and Doris Lusk Reserve.

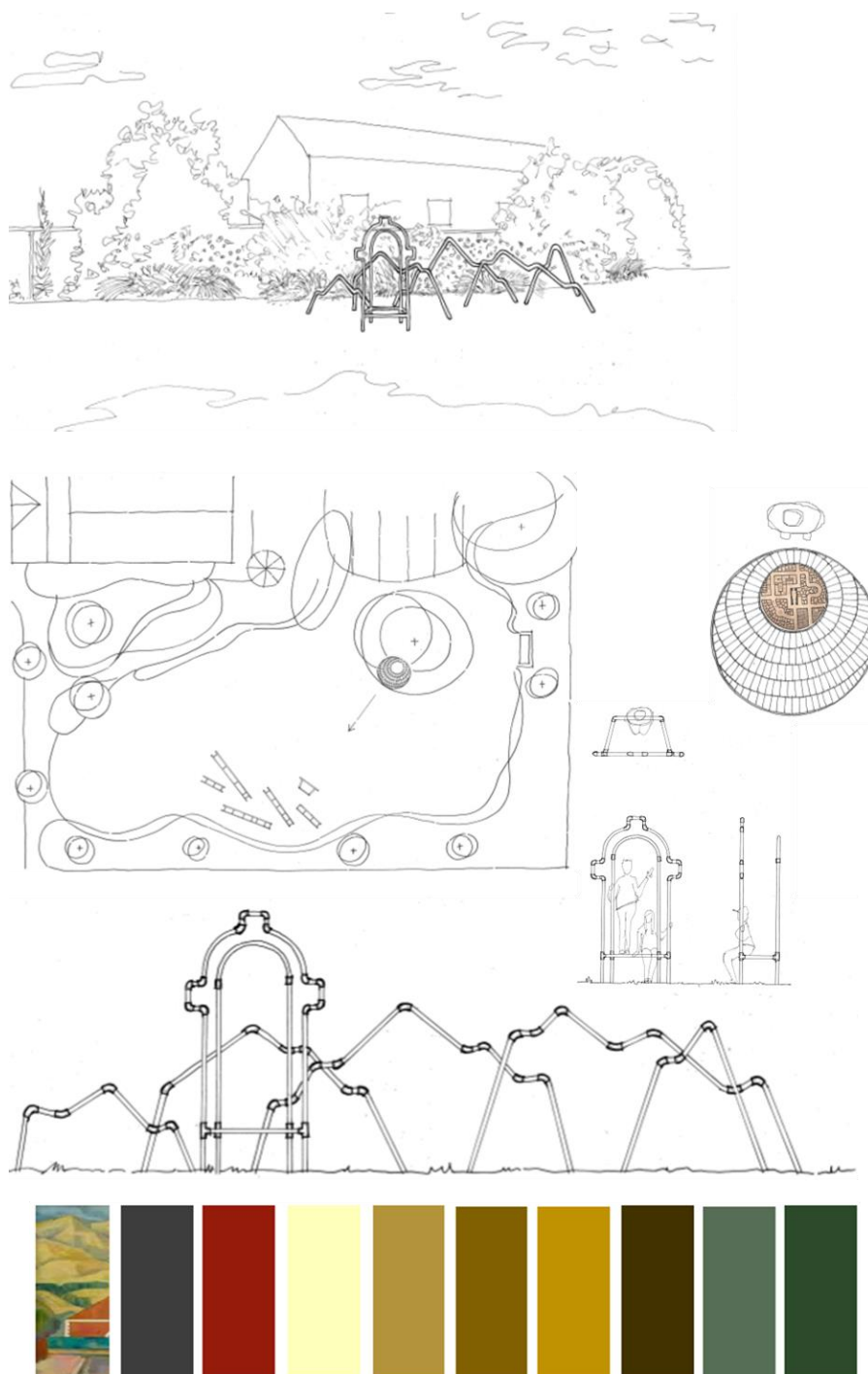
Timeline

- 5.16 The project is expected to be completed within the Council's 2021 financial year. However, final 'opening' may occur in late 2021.

6. Recommended Artwork Commission

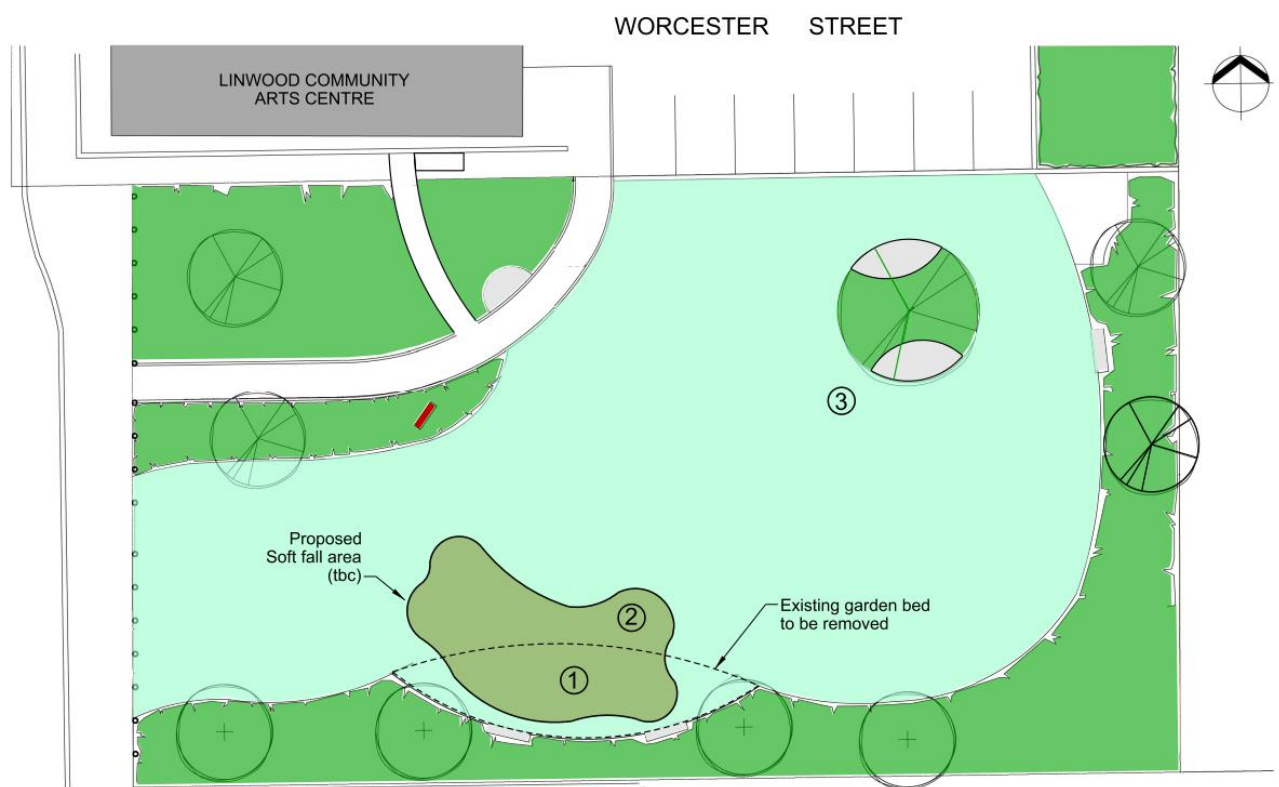
- 6.1 The recommended artwork commission is '*The Pumping Station*'.
- 6.2 The artwork will reimagine the Doris Lusk painting '*The Pumping Station*' as a three dimensional interactive art piece that can be played with both physically and conceptually. It consists of three independent parts that visually converge to create the whole artwork where the participants will be able to enact a variety of unique experiences of playfulness; Hills, Window and a Focal Point.
- 6.3 The work will use graphic tubular metal lines that rise up out of the ground to make a selection of hill shapes taken from the original artwork. Each hill will be conjoined in undulating pairs with swing rails that can be clambered on, swung from or slid down. They will be painted shades of tussock yellows and greens, colours drawn from the original painting.
- 6.4 The reimagining of the pumping station building has been filtered down to a three dimensional window frame that can be seen as the architectural beginnings of any imagined space such as a house, seat, gable or window. Participants may stand on the imagined ledge, sit on the window sill or climb inside the frame. This will be painted in colours that represent the original artwork building of brick red, white limestone and slate grey and shimmer at night.
- 6.5 All these shapes will be layered visually away from each other with room to play and for other community users to remain visually unencumbered during a variety of activities. The key to the artwork will be in the focal point. This will be an artist plaque installed in the ground at the perfect vantage point to see all the shapes come together to present as a single flat graphic linear interpretation of *The Pumping Station*. The circular plaque will have text relating to the artist and the image that they are looking at. It will point out the significance of the original artwork and connect the viewer to its community location. The use of locally sourced brick red clay will surround the sand cast steel plaque in the form of handmade bricks workshopped with children in the community to radiate like compass.
- 6.6 The intention of this playful artwork is that the participant will be able to place themselves both as viewer of or as participant inside the painting, by being able to either sit or play inside one of the reimagined pumping station windows, swing, climb and explore the Porthills shapes or seek out the focal point with plaque to stand on and obtain the perfect view point.

- 6.7 The images below give a sense of the concept.
- 6.8 Some changes may need to occur in detailed design to enable compliance with relevant safety, maintenance or engineering requirements.
- 6.9 The artists Natasha English and Tatayanna Meharry are sisters with a life practice in the arts who in partnership bring together separate skills in the arts and design industry. Recent collaborative works are part of the Wallace Art Collection and the World of Wearable Art Collection. Several have been award winning.
- 6.10 Both artists are granddaughters of Doris Lusk and grew up in the Linwood Area. She was instrumental to their creative pathway as they grew up. This unique neighbourhood was an integral part of her and their lives and *The Pumping Station* reflects this sense of place.



7. Changes to Doris Lusk Reserve Landscape Plan

- 7.1 To facilitate the installation there is a requirement to make changes to the current Doris Lusk Reserve shown in (Attachment C).
- 7.2 These changes are namely:
 - 7.2.1 Removal of several rose bushes and tussocks
 - 7.2.2 Installation of soft-fall material beneath the artwork
 - 7.2.3 Installation of the artwork
- 7.3 These minor changes to the original approved landscape plans for Doris Lusk Reserve (Attachment B) – which originally provided areas to display art, provides an open area for the proposed artwork
- 7.4 The removal of some foliage will assist in deterring anti-social behaviour – as people can be hidden by the current tussock grasses and rose bushes, making the park feel unsafe for some users, referenced anecdotally and in a CPTED report from 2014.
- 7.5 Recent maintenance activity by the Parks Staff has opened the park up and reduced areas to hide.
- 7.6 Changes to the Landscape Plan are shown below.



8. Policy Framework Implications / Ngā Hīraunga ā- Kaupapa here

Strategic Alignment /Te Rautaki Tīaroaro

- 8.1 This report supports the delivery of the adopted Linwood Village Master Plan.
- 8.2 This report supports the [Council's Long Term Plan \(2018 - 2028\)](#):
 - 8.2.1 Activity: Strategic Planning and Policy

- Level of Service: 17.0.20.2 Place-based policy & planning advice to support integrated urban regeneration & planning - Working collaboratively with Community Boards, DCL, RC & others, identify & address priority areas for CCC-led and community-led regeneration effort.

Policy Consistency / Te Whai Kaupapa here

- 8.3 The decision is consistent with Council's Plans and Policies.

Impact on Mana Whenua / Ngā Whai Take Mana Whenua

- 8.4 The decision does not involve a significant decision in relation to ancestral land or a body of water or other elements of intrinsic value, therefore this decision does not specifically impact Mana Whenua, their culture and traditions.

Climate Change Impact Considerations / Ngā Whai Whakaaro mā te Āhuarangi

- 8.5 The decision does not involve a significant decision in relation to climate change, however supports place-making which has been linked to improved resilience, and reduced vehicle use.
- 8.6 Any commission procurement will reference the Council's procurement policies and objectives of these.

Accessibility Considerations / Ngā Whai Whakaaro mā te Hunga Hauā

- 8.7 The decision does not involve a significant decision in relation to Accessibility considerations, however any accessibility considerations will be taken into account during the commissioning process.

9. Resource Implications / Ngā Hīraunga Rauemi

Capex/Opex / Ngā Utu Whakahaere

- 9.1 Cost to Implement - \$51,695
- 9.2 Maintenance/Ongoing costs – Estimated to be below \$600 per annum.
- 9.3 Funding Source – Included within the capital programme of the Long Term Plan (2018 – 2028). Minimal ongoing maintenance costs unfunded but will be absorbed within public artwork maintenance budgets.

Other / He mea anō

- 9.4 Staff Urban Regeneration, Parks, Participation and Engagement and Community Arts will be involved in delivering this project.

10. Legal Implications / Ngā Hīraunga ā-Ture

Statutory power to undertake proposals in the report / Te Manatū Whakahaere Kaupapa

- 10.1 The decision making authority of the Community Board to endorse the project and to nominate members to the public artwork team, is as per the Artworks in Public Places Policy, and the delegations register, which are policies and decisions of the Council made in compliance with the Local Government Act, 2002.

Other Legal Implications / Ētahi atu Hīraunga-ā-Ture

- 10.2 There is no legal context, issue or implication relevant to this decision.
- 10.3 This report has not been reviewed and approved by the Legal Services Unit.

11. Risk Management Implications / Ngā Hīraunga Tūraru

- 11.1 The decision does not involve a significant decision in relation to risk management, however any risk involved in commissioning an artwork and delivering a project will be managed through normal project processes.
- 11.2 Some project specific risks include:
- 11.2.1 Budget constraints – Funding for this project has been allocated in the 2018-2028 Long Term Plan, however this is a reasonably small budget that is not part of a wider capital works programme, as a consequence no other budget exists to cover a shortfall should it arise. To mitigate this risk there will be a need for careful use of the budget and a project manager has been appointed.
- 11.2.2 Community concerns – Doris Lusk Reserve has a number of interested and engaged community members, some who have concerns that an artwork may change what they like about Doris Lusk Reserve, coupled with those who have negative perceptions about the current use of the Reserve. These concerns will need to be managed by working with the artists to ensure the aspirations of the community are reflected in the artwork, particularly the creation of the vantage point element, and being transparent with the community about the process throughout.
- 11.2.3 Antisocial Uses – Doris Lusk Reserve has continued to attract antisocial behaviours by some members of the public. This project has been specifically developed to aid in limiting such use, through CPTED principles; other ways to address the anti-social use of the Reserve are being explored. Specific reference to this concern will be addressed in any contractor health and safety plan.

Attachments / Ngā Tāpirihanga

No.	Title	Page
A ➡	Doris Lusk Reserve - co-design process and feature commission report (<i>Under Separate Cover</i>)	
B ➡	Doris Lusk Reserve - Final plan for approval - Board Meeting 17.12.2008 (<i>Under Separate Cover</i>)	
C ➡	Doris Lusk Reserve - Updated Plan for Board Approval - The Pumping Station Artwork - 2021.04.06 (<i>Under Separate Cover</i>)	

In addition to the attached documents, the following background information is available:

Document Name	Location / File Link
Artworks in Public Places Policy, 2002	https://ccc.govt.nz/artworks-in-public-places-policy/
Artworks in Public Places Policy, 2002 – Appendix 6 - Community Artworks - Process Diagram	https://ccc.govt.nz/assets/Documents/The-Council/Plans-Strategies-Policies-Bylaws/Policies/APPOperationalAppendix6-docs.pdf
Linwood Village Master Plan, 2012	https://ccc.govt.nz/linwood-village-master-plan/

Confirmation of Statutory Compliance / Te Whakatūtutanga ā-Ture

Compliance with Statutory Decision-making Requirements (ss 76 - 81 Local Government Act 2002).

(a) This report contains:

- (i) sufficient information about all reasonably practicable options identified and assessed in terms of their advantages and disadvantages; and
- (ii) adequate consideration of the views and preferences of affected and interested persons bearing in mind any proposed or previous community engagement.

(b) The information reflects the level of significance of the matters covered by the report, as determined in accordance with the Council's significance and engagement policy.

Signatories / Ngā Kaiwaitohu

Author	Josh Neville - Planner Urban Regeneration
Approved By	Michael Down - Finance Business Partner Carolyn Ingles - Head of Urban Regeneration, Design and Heritage Carolyn Gallagher - Acting General Manager Infrastructure Planning & Regulatory Services

8. Linwood Park - Easements over Reserve

Reference / Te Tohutoro: 21/331972

Report of / Te Pou
Matua:

Sarah Stuart, Property Consultant, sarah.stuart@ccc.govt.nz

General Manager /
Pouwhakarae:

Mary Richardson, GM Citizens & Community

1. Purpose of the Report / Te Pūtake Pūrongo

- 1.1 The purpose of this report is to seek the Community Board's approval for an easement in favour of Orion in Linwood Park. The report is staff generated in order to obtain the approvals required to create the easements.
- 1.2 The easement will protect Orion's infrastructure which is already installed in the Park.
- 1.3 The decision in this report is of low significance in relation to the Christchurch City Council's Significance and Engagement Policy. The level of significance was determined by considering the impact of the easement on local residents and users of the reserve. There is a cost associated with the creation of the easements

2. Officer Recommendations / Ngā Tūtohu

That the Waikura/Linwood-Central-Heathcote Community Board:

1. Subject to the consent of the Minister of Conservation, approves pursuant to Section 48 of the Reserves Act 1977, the grant of easement to Orion over the indicative area in the plan shown in 5.3 below (or such other area as defined by survey of the infrastructure).
2. Recommends that the Chief Executive, using the Council's delegated authority from the Minister of Conservation, consents to the granting of the easement proposed in 1 above.
3. Authorises the Property Consultancy Manager, should the easement be granted with the consent of the Minister of Conservation, to finalise documentation to implement the easement.

3. Reason for Report Recommendations / Ngā Take mō te Whakatau

- 3.1 To obtain approval to create an easement in favour of Orion to protect its existing infrastructure within the Reserve.

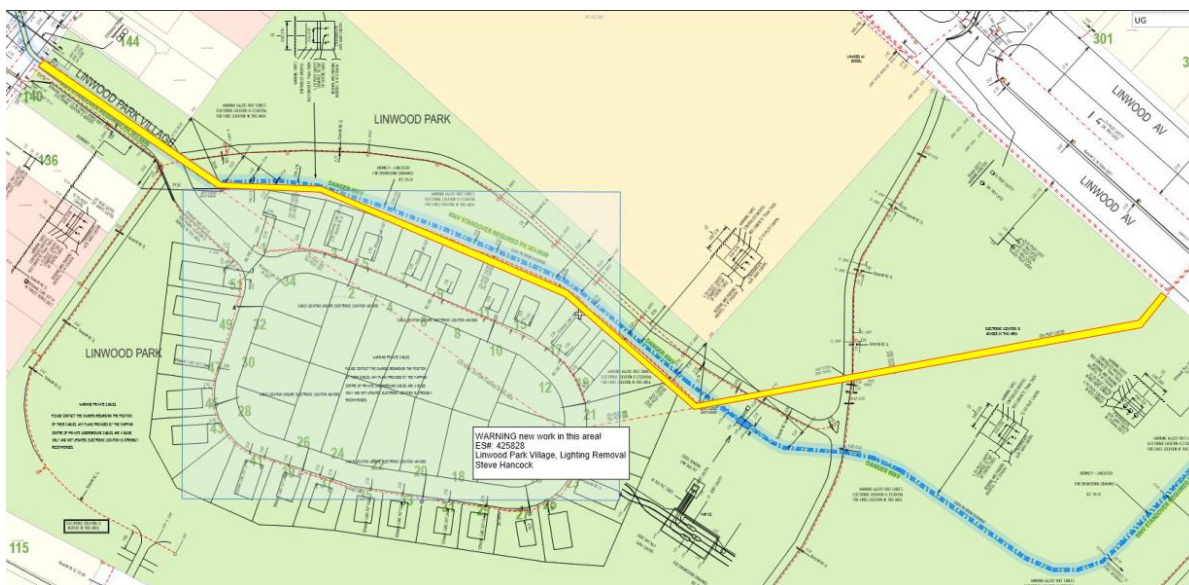
4. Alternative Options Considered / Ētahi atu Kōwhiringa

- 4.1 The alternative is not to create the proposed easement.
- 4.2 The disadvantages of this outcome would be that:
 - 4.2.1 Orion will not have legal access to its underground assets within the reserve.
 - 4.2.2 The presence of Orion's infrastructure will not be clearly identified on the relevant titles.
 - 4.2.3 It would not reflect best practice which is for Council to register easements over its land.
- 4.3 There is no advantage of not granting the easement proposed given Orion is meeting all associated costs.

5. Detail / Te Whakamahuki

Easement Location

- 5.1 Christchurch City Council has asked Orion to decommission the network that was used to service the Linwood Village during the earthquakes.
- 5.2 Orion has an existing 66 kv network and pilot cables that run through this site that need to be retained following the decommissioning of the network.
- 5.3 The 66kv (highlighted blue below) is already protected by an easement but a new easement is required to protect the pilot cables (highlighted yellow below):



- 5.4 The recommendation includes approval for "... such other area as defined by survey of the infrastructure". This is to cater for the possibility that on survey the infrastructure may be located in a slightly different position to that indicated. This approval assumes any such changes will not materially alter the reserve or have a permanent effect on its users.

Community views

- 5.5 Community views and preferences on the granting of the easement to Orion are unknown. The notification criteria outlined in section 48(2) of the Reserves Act 1977 requires public notice to be given except where the reserve is not likely to be materially altered or permanently damaged and where the rights of the public in respect of the reserve are not likely to be permanently affected. In this case notification is not required because the installation of an underground cable meets the criteria for exception under the Reserves Act.

Costs

- 5.6 Orion will pay for the survey and Council's costs associated with the granting of the easement.

Consent of the Minister of Conservation

- 5.7 In exercising the consent of the Minister of Conservation, the Council should be satisfied that due procedure has been followed and in this respect the Council should have regard to the following matters:
 - 5.7.1 The land affected by the application is a reserve subject to the provisions of the Reserves Act 1977. It is confirmed that the subject land, held in record of title CB188/155, is reserve land subject to the Reserves Act 1977.

- 5.7.2 The easement being applied for falls within the purposes specified in Section 48(1) of the Reserves Act. In this case the easement satisfies section 48(1)(d) being an electrical installation.
- 5.7.3 The provisions of Section 48(2) (public notification) have been complied with or a waiver can be given to this requirement under Section 48(3). The waiver applies in this instance because the reserve will not be materially altered or permanently damaged, and the rights of the public are not permanently affected.
- 5.7.4 Section 4 of the Conservation Act 1987 (this Act shall be interpreted and administered as to give effect to the principles of the Treaty of Waitangi) meaning that in consenting to transactions under the Reserves Act 1977, consideration is to be given to the requirement or otherwise to consult with iwi. This is addressed in Points 6.4-6.5 below.

Wards and Community Boards Affected

- 5.8 The decision affects the Linwood ward and the Waikura/Linwood-Central-Heathcote Community Board.

6. Policy Framework Implications / Ngā Hīraunga ā- Kaupapa here

Strategic Alignment / Te Rautaki Tīaroaro

- 6.1 The proposed creation of the easement within Linwood Park fits within the Council's Strategic Framework because the associated infrastructure increases participation opportunities.
- 6.2 This report supports the [Council's Long Term Plan \(2018 - 2028\)](#):
- 6.2.1 Activity: Parks & Foreshore
- Level of Service: 6.3.7.3 Provide community participation opportunities across the parks network. - Community Parks & Cemeteries: 6 volunteer hours/1000 people.

Policy Consistency / Te Whai Kaupapa here

- 6.3 The decision is consistent with Council's Plans and Policies.

Impact on Mana Whenua / Ngā Whai Take Mana Whenua

- 6.4 The decision does not involve a significant decision in relation to ancestral land or a body of water or other elements of intrinsic value, therefore this decision does not specifically impact Mana Whenua, their culture and traditions.
- 6.5 The creation of the proposed easement will not specifically impact Mana Whenua because there is no perceptible change to the status quo.

Climate Change Impact Considerations / Ngā Whai Whakaaro mā te Āhuarangi

- 6.6 The decisions in this report do not have any impact on climate change.

Accessibility Considerations / Ngā Whai Whakaaro mā te Hunga Hauā

- 6.7 The decisions in this report will have no impact on public accessibility.

7. Resource Implications / Ngā Hīraunga Rauemi

Capex/Opex / Ngā Utu Whakahaere

- 7.1 Cost to Implement – nil. All costs will be borne by Orion.
- 7.2 Maintenance/Ongoing costs – No on-going maintenance costs.
- 7.3 Funding Source – Initial investigation staff time costs from Parks Unit Planning operational budget.

Other / He mea anō

7.4 N/A

8. Legal Implications / Ngā Hīraunga ā-Ture

Statutory power to undertake proposals in the report / Te Manatū Whakahaere Kaupapa

8.1 Sections 10 and 48 of the Reserves Act 1977.

Other Legal Implications / Ētahi atu Hīraunga-ā-Ture

8.2 There is no legal context, issue or implication relevant to this decision.

8.3 This report has not been reviewed and approved by the Legal Services Unit. The Legal Services Unit will prepare all necessary easement documents.

9. Risk Management Implications / Ngā Hīraunga Tūraru

9.1 No risk has been identified.

Attachments / Ngā Tāpirihanga

There are no attachments for this report.

In addition to the attached documents, the following background information is available:

Document Name	Location / File Link

Confirmation of Statutory Compliance / Te Whakatūtutanga ā-Ture

Compliance with Statutory Decision-making Requirements (ss 76 - 81 Local Government Act 2002).

(a) This report contains:

- (i) sufficient information about all reasonably practicable options identified and assessed in terms of their advantages and disadvantages; and
- (ii) adequate consideration of the views and preferences of affected and interested persons bearing in mind any proposed or previous community engagement.

(b) The information reflects the level of significance of the matters covered by the report, as determined in accordance with the Council's significance and engagement policy.

Signatories / Ngā Kaiwaitohu

Author	Sarah Stuart - Property Consultant
Approved By	Angus Smith - Manager Property Consultancy Russel Wedge - Team Leader Parks Policy & Advisory Mary Richardson - General Manager Citizens & Community

9. Waikura/Linwood-Central-Heathcote Community Board Area Report - April 2021

Reference / Te Tohutoro: 21/211642

Report of / Te Pou Arohanui Grace, Community Governance Manager

Matua: arohanui.grace@ccc.govt.nz

General Manager / Mary Richardson, Citizens and Community

Pouwhakarae: mary.richardson@ccc.govt.nz

1. Purpose of Report / Te Pūtake Pūrongo

This report provides the Board with an overview on initiatives and issues current within the Community Board area.

2. Officer Recommendations / Ngā Tūtohu

That the Waikura/Linwood-Central-Heathcote Community Board:

1. Receive the Waikura/Linwood-Central-Heathcote Community Board Area Report for April 2021.

3. Community Support, Governance and Partnership Activity

3.1 Community Governance Projects

Activity	Detail	Timeline	Strategic Alignment
Community Events	The Walking Festival 2021 will be held in the Easter school holidays. Featuring 55 walks in total, 17 of which are based in the Waikura/Linwood-Central-Heathcote Community Board area, the festival is aimed at showcasing some great places to walk in the area and inspire more people to get outdoors and walk regularly.	17 April – 2 May	Community wellbeing is supported and improved
	Central Hoops - Following the success of the Hoops pilot at the Youth Space as part of the FRESH event, YCD, CCC and Gap Filler are joining together to hold a 3v3 youth basketball Tournament at the same site.	21 April	Community wellbeing is supported and improved
	EDEN , Earth Day Eastern is a new initiative from Bromley Community Trust which will mark this year's Earth Day with an event which will showcase different options to live more sustainably. The event will	22 April	Community wellbeing is supported and improved

	also feature Hoops in the Bronx , including a youth basketball 3v3 tournament and an inaugural wheelchair hoops competition.		
	Adventure on Te Ara Ihutai Christchurch Coastal Pathway walk is part of the Walking Festival but an event in its own right. Delivered by the Avon-Heathcote Ihutai Estuary Trust the walk starts at Mt Pleasant Community Centre, and follows the coastal pathway all the way Scarborough Beach, with a scavenger hunt, fun activities and guest speakers along the way.	24 April	Community wellbeing is supported and improved

- 3.2 **Community Ward Profiles** - The Community Governance Teams across the city have recently completed ward-based Community Profiles. These profiles are a continuation of the work that was done following the 2011 earthquake when central government asked the Community Support Unit to profile the worst effected suburbs across the city. The project was then extended to include all suburbs across the city being profiled on an annual basis, with the last ones being completed in 2014.

Following feedback from both internal and external stakeholders on how useful the profiles were, and to assist with planning and prioritising of local issues, the Community Support, Governance and Partnerships Unit has refreshed the profiles and created one for each ward.

The profiles are a 'snapshot' of the community at a particular point in time and include information on key demographics, community infrastructure, community capacity and key issues. The profiles will be updated yearly.

Profiles for the Linwood, Central and Heathcote wards are attached (**Attachment A**).

- 3.3 **Meeting with School Principals** – The Board held its first breakfast meeting of the year with the Board Area school principals on 24 February 2021. A presentation was given on the Council's School Travel Planning programme.

- 3.4 **Community Funding Summary**

3.4.1 **Youth Dance Party**

The second event in the FRESH series was held at Te Puna o Waiwhetū Christchurch Art Gallery on Saturday 13 February 2021. The event was planned and hosted by Youth and Cultural Development (YCD) working alongside Council staff, the Christchurch Youth Council and VOYCE Whakaronga Mai. Around 300 rangatahi were in attendance and the evening included performances from local up and coming young artists as well as Christchurch's celebrity rapper Scribe who delighted the crowd with a couple of his best-known tracks.

YCD are now working on their next two youth events; a Pool Party at Waltham on the 28 March 2021, Central Hoops at the Youth Space on 21 April 2021 and LYFE Ball on 15 May 2021 at Woolston Club.



3.4.2 Sumner Skate Ramp

The community at Sumner were welcomed back to the newly refurbished Sumner Skate Ramp on Saturday 11 April. With funding from the Waikura/Linwood-Central-Heathcote

Community Board the group were able to get the materials required to replace the skate surface and fix the fencing and lower supports making the ramp once again safe for use.

Once the repairs were complete, Sumner Community Residents Association held a painting bee on Saturday 13 March where skaters from the community were invited to help put the finishing touches to the ramp before its relaunch. The ramp is now back in action and continues to attract hundreds of skaters every week.



3.4.3 Edible and Sustainable Garden Awards 2021

The Waikura/Linwood-Central-Heathcote Community Board allocated funding for Edible and Sustainable Garden Award ceremony, scheduled on 4 March 2021 however the event was cancelled owing to COVID alert level 2. Some Community Board members and Community Governance team members delivered the award certificates and prizes to the recipients' garden locations. Photos were taken and sent to the recipients for displaying on their individual/ community groups' social media. Photos were also sent to the biggest prize sponsor, the Orderings, for their media release.



3.4.4 Community Board Discretionary Response Fund 2020-21

- Discretionary Response Fund unallocated balance for 2020/21 is \$44,315.00.
- Youth Development Fund unallocated balance for 2020/21 is \$3,700.
- Light Bulb Moments Fund unallocated balance for 2020/21 is \$3,400.

3.4.5 The 2020/21 Discretionary Response Funding Spreadsheet is attached. **(Attachment B).**

3.4.6 **2019-20 Strengthening Communities Funding** - A summary of the End of Project Reports for the 2019-20 Strengthening Communities Fund is attached. **(Attachment C).**

3.5 Participation in and Contribution to Decision Making

3.5.1 Report back on other Activities contributing to Community Board Plan [for items not included in the above table but are included in Community Board Plan]

- A six monthly status update on the progress against the outcomes for the Community Board Plan was reported back to the Board at its 1 February 2021 meeting. The next update will be presented to the Board in August 2021.
- **Eastside Tākaro Network** - After receiving feedback from groups that they would like more opportunity to connect with other sporting codes and work more

collaboratively; this initiative aims to bring together a range of sports associations and recreation providers to form a network.

An initial session as a pilot for the network was held on the 23 February 2021 with twelve people in attendance from nine different organisations. The group set the kaupapa for this network, dates and timings for future hui, decided on the structure and agreed on some key themes they would like to cover in the next series of sessions.

Staff have since heard from other organisations who could not make the first hui but were keen to be part of the network. The theme for the next session will be on funding in anticipation of the up-coming Strengthening Communities Funding round.

3.5.2 Council Engagement and Consultation.

- **Community Board Newsletter** – Social media promotion of community board newsletters was held in February 2021 through the Council’s Facebook page and within various community Facebook pages. The posts have been well-received and to date there has been an increase of 50 new subscribers to the Waikura/Linwood-Central-Heathcote Community Board newsletter bringing the total of subscribers to 744.
- **Environment Canterbury Draft Long Term Plan 2021-31** – The Board provided the following comment for input into the Council’s submission on the Environment Canterbury Draft Long Term Plan.
 - **Enviroschools Programme** – the Board supports the concept of Environ Schools, and wishes that schools to be involved in the programme.
 - **Air Quality Level of Service** – The Board wishes to see Environment Canterbury to respond in a timely manner to residents’ concerns/complaints in relation to air discharges, odours, etc.
 - **Cost Recovery from Consent Holders** – The Board would like to see full cost recovery from consent holders for monitoring and compliance and the cost burden not put on ratepayers.
 - **Public Transport** – The Board supports the reinstatement and enhancement of bus services in the east of the city, especially Linwood ward.
- **Have your Say** – at the time of writing the report the following consultations were open within the Community Board Area and city-wide consultation:

Topic	Closing Date	Link
Te Mahere Rautaki Kaurera – Council Draft Long Term Plan 2021-31	18 April 2021	https://ccc.govt.nz/the-council/consultations-and-submissions/haveyoursay/show/386
Draft Development Contributions Policy 2021	18 April 2021	https://ccc.govt.nz/the-council/consultations-and-submissions/haveyoursay/show/398
Draft Ōtautahi Christchurch Climate Change Strategy 2021	25 April 2021	https://ccc.govt.nz/the-council/consultations-and-submissions/haveyoursay/show/395

Topic	Closing Date	Link
Representation Review Initial Proposal 2021	16 May 2021	https://ccc.govt.nz/the-council/consultations-and-submissions/haveyoursay/show/396
Ferry Road Cycleway Trial	31 January 2022	https://ccc.govt.nz/the-council/consultations-and-submissions/haveyoursay/show/379

- **Board Submissions Committee** –the Board’s Submission Committee met on 31 March 2021 to formulate the following Board submissions:
 - Christchurch City Council’s Draft Long Term Plan 2021-31.
 - Christchurch City Council’s Draft Development Contributions Policy Review 2021.
 - Draft Ōtautahi Christchurch Climate Change Strategy 2021.
 - Christchurch Representation Review.
 - Christchurch District Plan Change 4 – Short Term Accommodation (Board’s Oral Submission). The hearing for Plan Change 4 is to be held on Monday 17 May 2021.

4. Governance Advice

- 4.1 The Board reported to the Council’s 11 March meeting giving an update on the decisions and work of the Board during February.
- 4.1.1 The Board advocated to the Council on the following:
- The issues of Garlands Road and Radley Street Intersection Issues which have been
 - The Board’s support of a community proposal for a cycleway connection on Stanmore Road from Worcester Street to Avonside Drive. The Urban Development and Transport Committee received a public forum presentation on the proposal at its 10 March 2021 meeting.
- 4.2 **Greening the East Development Plan** – The Board at its 31 March 2021 approved the Greening the East Development Plan.
- 4.3 **Board’s Quarterly Workshops** – The Board discussed the Board’s quarterly workshops dates and times during the formation of the Board’s 2021 meeting schedule. Prior to the Board confirming its 2021 meeting schedule the Board were advised on 18 December 2020 of the proposed meeting dates, and times. Some Board members have advised that they will not be available to attend the quarterly workshops. The Board is asked to discuss this matter and provided direction for staff.

5. Advice Provided to the Community Board

- 5.1 **CoastSnap Project** – Memorandum giving an update on the CoastSnap Project with installations at Te Onepoto/Taylors Mistake and Kaiua/New Brighton Pier. **(Attachment D).**
- 5.2 **Te Ara Ihutai Coastal Pathway** – Memorandum in reply to the Board’s 4 November 2020 briefing *request for staff advice on the preconstruction and post construction safety audit of the*

Moncks Bay section of Te Ara Ihutai Coastal Pathway and a map of the current speed zones from the causeway through to Rapanui Cave Road. (Attachment E).

- 5.3 **Colourful Cashel** – Memorandum advising on the installation of pavement art and roadway art to support the upcoming Christchurch Pride Events (5 March – 14 March). **(Attachment F).**
- 5.4 **Central City Residential Programme** – Memorandum advising on the progress of the Central City Residential Programme **(Attachment G).**
- 5.5 **Aldred Reserve – Play Facilities** - Memorandum updating that the play facilities upgrade in Aldred Reserve is now on hold. **(Attachment H).**
- 5.6 **Kiwirail Bridge 7 Replacement Landscape Plan** - Memorandum in reply to the Board's 20 October 2020 request: *The Board agreed to request staff advice on the landscaping that is planned for the Kiwirail Bridge 7 Replacement Project.* **(Attachment I).**
- 5.7 **Stability of Landscaping Boulders** – Memorandum in reply to the Board's 1 February 2021 request: *Agreed to request staff advice on the use of large landscaping boulders and structures being placed on steep streets on property boundaries.* **(Attachment J).**
- 5.8 **Charlesworth Reserve** – Memorandum advising of public consultation on a proposed variation to the lease held by the Green Effect Trust for the Trees of Canterbury native plant nursery. **(Attachment K).**
- 5.9 **Community Board Plan Priority: Improving Bromley's Roads, Parks and Infrastructure** – Memorandum outlining the process to date and setting out key matters to be addressed, and propose a way forward for future action. **(Attachment L).**
- 5.10 **Mecca Place – Tree Shading** – Memorandum in reply to the Board's 2 November 2020 requests: *For staff advice on the health of the Pine trees on the boundary of Cuthberts Green Reserve and for staff advice on the shade assessment of the Pine Trees on the boundary of Cuthberts Green and Mecca Place.* **(Attachment M).**
- 5.11 **Lancaster Park Update** – Memorandum in reply to the Board's 30 November 2020 request: *Requests staff advice on the updated plan for Lancaster Park and recent engagement.* **(Attachment N)**
- 5.12 **Capital Delivery Community Update –February 2021** is attached. **(Attachment O).**
- 5.13 **Graffiti Snapshot Report** – February 2021 is attached. **(Attachment P).**
- 5.14 **Parks Unit Bi-monthly Report** – March 2021 is attached. **(Attachment Q).**

Attachments / Ngā Tāpirihanga

No.	Title	Page
A ➡	Linwood-Central-Heathcote Community Wards Profiles - April 2021 <i>(Under Separate Cover)</i>	
B ➡	Waikura/Linwood-Central-Heathcote Community Board 2020-21 Discretionary Fund <i>(Under Separate Cover)</i>	
C ➡	Waikura/Linwood-Central-Heathcote Community Board 2019-20 Strengthening Communities Fund End of Project Report <i>(Under Separate Cover)</i>	
D ➡	Memorandum: CoastSnap Project Update 23 February 2021 <i>(Under Separate Cover)</i>	
E ➡	Memorandum: Te Ara Ihutai Coast Pathway -Safety Audit and Speed Limit Zones 24 February 2021 <i>(Under Separate Cover)</i>	
F ➡	Memorandum: Colourful Cashel Pride Week 2021 Project 24 February 2021 <i>(Under Separate Cover)</i>	
G ➡	Memorandum: Central City Residential Programme Progress Update 24 February 2021 <i>(Under Separate Cover)</i>	
H ➡	Memorandum: Aldred Reserve - Play Facilities 2 March 2021 <i>(Under Separate Cover)</i>	
I ➡	Memorandum: Kiwirail Bridge 7 Replacement Project - Landscape Plan 5 March 2021 <i>(Under Separate Cover)</i>	
J ➡	Memorandum: Stability of Landscaping Boulders - 11 March 2021 <i>(Under Separate Cover)</i>	
K ➡	Memorandum: Charlesworth Reserve - Upcoming Consultation 19 March 2021 <i>(Under Separate Cover)</i>	
L ➡	Memorandum: Community Board Plan Priority: Improving Bromley's Roads, Parks and Infrastructure - 24 March 2021 <i>(Under Separate Cover)</i>	
M ➡	Memorandum: Mecca Place Tree Shading 25 March 2021 <i>(Under Separate Cover)</i>	
N ➡	Memorandum: Lancaster Park Update - 26 March 2021 <i>(Under Separate Cover)</i>	
O ➡	Linwood-Central-Heathcote Capital Delivery Community Update - February 2021 <i>(Under Separate Cover)</i>	
P ➡	Graffiti Update - February 2021 <i>(Under Separate Cover)</i>	
Q ➡	Waikura/Linwood-Central-Heathcote Community Board Parks Update - March 2021 <i>(Under Separate Cover)</i>	

Signatories / Ngā Kaiwaitohu

Authors	Liz Beaven - Community Board Advisor Rochelle Faimalo - Community Development Advisor Chien-Chi Lin - Support Officer Courtney Reid - Support Officer Sol Smith - Community Development Advisor Emily Toase - Community Recreation Advisor
Approved By	Arohanui Grace - Manager Community Governance, Linwood-Central-Heathcote Matthew McLintock - Manager Community Governance Team John Filsell - Head of Community Support, Governance and Partnerships

10. Elected Members' Information Exchange / Te Whakawhiti Whakaaro o Te Kāhui Amorangi

This item provides an opportunity for Board Members to update each other on recent events and/or issues of relevance and interest to the Board.