

**Waihoru/
Spreydon-Cashmere Community Board
AGENDA**

Notice of Meeting:

An ordinary meeting of the Waihoru/Spreydon-Cashmere Community Board will be held on:

Date: Tuesday 30 March 2021
Time: 5pm
Venue: Raupō Hub, Spreydon School
50 Hoon Hay Road, Hoon Hay

Membership

Chairperson	Karolin Potter
Deputy Chairperson	Lee Sampson
Members	Melanie Coker
	Keir Leslie
	Tim Scandrett
	Callum Ward

Jo Wells
Manager Community Governance, Spreydon-Cashmere
941 6451
jo.wells@ccc.govt.nz
www.ccc.govt.nz

Note: The reports contained within this agenda are for consideration and should not be construed as Council policy unless and until adopted. If you require further information relating to any reports, please contact the person named on the report.

To view copies of Agendas and Minutes, visit:

<https://www.ccc.govt.nz/the-council/meetings-agendas-and-minutes/>



Developing Resilience in the 21st Century

Strategic Framework

Whiria ngā whenu o ngā papa,
honoa ki te maurua tāuiki

Bind together the strands of each mat and join
together with the seams of respect and reciprocity

Ōtautahi-Christchurch is a city of opportunity for all

Open to new ideas, new people and new ways of doing things – a city where anything is possible

Principles

Being open,
transparent and
democratically
accountable

Promoting
equity, valuing
diversity and
fostering inclusion

Taking an inter-generational approach
to sustainable development,
prioritising the social, economic
and cultural wellbeing of
people and communities
and the quality of the
environment, now
and into the
future

Building on the
relationship with
Te Rūnanga o Ngāi Tahu
and the Te Hononga-Council
Papatipu Rūnanga partnership,
reflecting mutual understanding
and respect

Ensuring
the diversity
and interests of
our communities
across the city and the
district are reflected in
decision-making

Actively collaborating and
co-operating with other
local, regional
and national
organisations

Community Outcomes

Resilient communities

Strong sense of community
Active participation in civic life
Safe and healthy communities
Celebration of our identity
through arts, culture, heritage,
sport and recreation
Valuing the voices of all cultures
and ages (including children)

Liveable city

Vibrant and thriving city centre
Sustainable suburban and
rural centres
A well connected and accessible
city promoting active and
public transport
Sufficient supply of, and
access to, a range of housing
21st century garden city
we are proud to live in

Healthy environment

Healthy water bodies
High quality drinking water
Unique landscapes and
indigenous biodiversity are
valued and stewardship
exercised
Sustainable use of resources
and minimising waste

Prosperous economy

Great place for people, business
and investment
An inclusive, equitable economy
with broad-based prosperity
for all
A productive, adaptive and
resilient economic base
Modern and robust city
infrastructure and community
facilities

Strategic Priorities

Enabling active
and connected
communities
to own their future

Meeting the challenge
of climate change
through every means
available

Ensuring a high quality
drinking water supply
that is safe and
sustainable

Accelerating the
momentum
the city needs

Ensuring rates are
affordable and
sustainable

Ensuring we get core business done while delivering on our Strategic Priorities and achieving our Community Outcomes

Engagement with
the community and
partners

Strategies, Plans and
Partnerships

Long Term Plan
and Annual Plan

Our service delivery
approach

Monitoring and
reporting on our
progress

Part A	Matters Requiring a Council Decision
Part B	Reports for Information
Part C	Decisions Under Delegation

TABLE OF CONTENTS

Mihi/Karakia Timatanga	4
Waiata	
C 1. Apologies / Ngā Whakapāha.....	4
B 2. Declarations of Interest / Ngā Whakapuaki Aronga	4
C 3. Confirmation of Previous Minutes / Te Whakaāe o te hui o mua	4
B 4. Public Forum / Te Huinga Whānui.....	4
B 5. Deputations by Appointment / Ngā Huinga Whakaritenga	4
B 6. Presentation of Petitions / Ngā Pākikitanga.....	5
B 7. Correspondence - Traffic Safety at Cashmere Primary School	13
C 8. Correspondence - Street Names in Middleton	17
C 9. Briefings - Council's Draft Climate Change Strategy	19
STAFF REPORTS	
C 10. Waihoru / Spreydon-Cashmere 2021/22 Discretionary Response Fund Applications: Multiple Sclerosis and Parkinson's Society of Canterbury, and Spreydon-Cashmere Community Board Off the Ground Fund.....	21
C 11. Submissions.....	27
B 12. Elected Members' Information Exchange / Te Whakawhiti Whakaaro o Te Kāhui Amorangi.....	30
Karakia Whakamutunga	

Mihi/Karakia Timatanga

Waiata

1. Apologies / Ngā Whakapāha

At the close of the agenda no apologies had been received.

2. Declarations of Interest / Ngā Whakapuaki Aronga

Members are reminded of the need to be vigilant and to stand aside from decision making when a conflict arises between their role as an elected representative and any private or other external interest they might have.

3. Confirmation of Previous Minutes / Te Whakaāe o te hui o mua

That the minutes of the Waihoru/Spreydon-Cashmere Community Board meeting held on [Wednesday, 17 March 2021](#) be confirmed (refer page 6).

4. Public Forum / Te Huinga Whānui

A period of up to 30 minutes will be available for people to speak for up to five minutes on any issue that is not the subject of a separate hearings process.

4.1 Somerfield Park Basketball Court

Curtis Higginson, Canterbury Youth Workers Collective, students from Cashmere High School and Julie Tobbell, Somerfield Residents Association, will speak to the Board regarding the potential to have a basketball court on Somerfield Park.

4.2 Champ Nations Youth Academy

Curtis Higginson, Canterbury Youth Workers Collective, and students from Hillmorton High School will speak to the Board regarding the Champ Nations Youth Academy.

4.3 Reduced Speed Limit on Ferniehurst Street

Michael Fowke, resident, will speak about his proposal to reduce the speed limit on Ferniehurst Street.

4.4 Christchurch South Community Gardens

Christine Blance, Manager, will provide an update on Christchurch South Community Gardens.

4.5 Traffic Safety at St Martins Road/ Ensors Road/ Riverlaw Terrace Intersection

Finn Jackson, resident, will speak on about traffic safety concerns at the St Martins Road/ Ensors Road/ Riverlaw Terrace intersection.

5. Deputations by Appointment / Ngā Huinga Whakaritenga

Deputations may be heard on a matter or matters covered by a report on this agenda and approved by the Chairperson.

There were no deputations by appointment at the time the agenda was prepared.

6. Presentation of Petitions / Ngā Pākikitanga

There were no petitions received at the time the agenda was prepared.

Waihoru/ Spreydon-Cashmere Community Board OPEN MINUTES

Date: Wednesday 17 March 2021
Time: 8.04am
Venue: Boardroom, Beckenham Service Centre,
66 Colombo Street, Beckenham

Present

Chairperson	Karolin Potter
Deputy Chairperson	Lee Sampson
Members	Melanie Coker
	Keir Leslie
	Tim Scandrett
	Callum Stewart-Ward

Jo Wells
Manager Community Governance, Spreydon-Cashmere
941 6451
jo.wells@ccc.govt.nz
www.ccc.govt.nz

Part A Matters Requiring a Council Decision

Part B Reports for Information

Part C Decisions Under Delegation

Mihi/Karakia Timatanga: Tim Scandrett

Waiata: The Board sang a waiata to open the meeting.

The meeting held a moment of silence to acknowledge the two year anniversary of the Christchurch terror attacks.

The agenda was dealt with in the following order.

1. Apologies / Ngā Whakapāha

Part C

Community Board Resolved SCCB/2021/00014

That the apology for absence from Lee Sampson, and the apologies for early departure from Tim Scandrett, who was absent for part of Item 8 and Item 11, and Melanie Cooker, who was absent for Item 11, be accepted.

Melanie Coker/Keir Leslie

Carried

2. Declarations of Interest / Ngā Whakapuaki Aronga

Part B

There were no declarations of interest recorded.

3. Confirmation of Previous Minutes / Te Whakaāe o te hui o mua

Part C

Community Board Resolved SCCB/2021/00015

That the minutes of the Waihoru/Spreydon-Cashmere Community Board meeting held on Tuesday, 2 March 2021 be confirmed with the following amendments:

Item 8. Elected Members' Information Exchange

- A Board member noted that Cracroft Residents Association requested staff to come to their next meeting on Monday, 8 March to speak to the newly opened ~~Gosford~~ Gosforth Way.
- The Board held a site visit at the Curletts Stormwater Basin. Staff advised that they are employing a strategy that uses protective canopy plants to help native plants grow. *Staff agreed to prepare a leaflet about the project to distribute to residents.*

Tim Scandrett/Callum Stewart-Ward

Carried

4. Public Forum / Te Huinga Whānui

Part B

4.1 Sunflower Competition

Ruth Vercoe, member of Spreydon Neighbourhood Network, was scheduled to speak to the Board regarding the recent Sunflower Competition that she organised, but did not attend.

4.2 Environment Canterbury's Draft Long Term Plan

Vicky Southworth, Councillor, and Phil Clearwater, Councillor, Environment Canterbury (ECan), spoke about ECan's Draft Long Term Plan for 2021-31.

The Board was advised that, if it wishes, it can provide input into the Council's submission on ECan's Long Term Plan.

After questions from members, the Chairperson thanked Ms Southworth and Mr Clearwater for their presentation.

Attachments

- A Environment Canterbury's Presentation
- B Environment Canterbury's Long Term Plan 2021-31

4.3 Pedestrian and Cyclist Safety on Brougham Street

Jo Robertson, Chairperson, Te Kura Taumatua Addington School Board of Trustees, and David Hawke, resident, spoke about pedestrian and cyclist safety on Brougham Street, particularly near Addington School at the intersection with Collins/Simeon Streets.

Following Addington School and the Board's request in 2020, Waka Kotahi made several interim safety improvements to the intersection. Mr Hawke presented findings from data collected before and after these changes.

Mr Hawke and Ms Robertson noted that while Waka Kotahi also committed to new signage to alert road users of the presence of school children crossing the road, this has not yet been installed. They also requested that a speed alert sign, which has been broken for some time, is repaired and that the existing school sign is relocated so that vehicles exiting the motorway see it before they reach the crossing.

Ms Robertson noted that the community does not support widening Brougham Street or building a tunnel for pedestrians and cyclists. Instead, the community supports slower speeds along Brougham Street, particularly past Addington School, to improve safety for pedestrians and cyclists.

After questions from members, the Chairperson thanked Ms Robertson and Mr Hawke for their presentation.

The Waihoru/Spreydon-Cashmere Community Board agreed to:

1. Request that Waka Kotahi install signage near the Brougham Street and Simeon/Collins Streets intersection to alert road users to the presence of school children crossing the road, as it committed to in 2020, repair the speed alert sign and move the existing school sign so that vehicles exiting the motorway see it before reaching the intersection.
2. Request that Waka Kotahi and Council staff brief the Board urgently about the proposal to improve Brougham Street in Addington, particularly at the Brougham Street and Simeon/Collins Streets intersection, including timeframes and details of the proposal.

3. Request that Waka Kotahi engage with the local community, including Addington School, from an early stage on the proposal to improve Brougham Street in Addington.

Attachments

- A Brougham St Crossing

5. Deputations by Appointment / Ngā Huinga Whakaritenga

Part B

There were no deputations by appointment.

6. Presentation of Petitions / Ngā Pākikitanga

Part B

There was no presentation of petitions.

8. Kidson Terrace Proposed No Stopping Restrictions

Community Board Resolved SCCB/2021/00017 (Original officer recommendations accepted without change.)

Part C

That the Waihoru/Spreydon-Cashmere Community Board:

1. Approves, pursuant to Clause 7 of the Christchurch City Council Traffic and Parking Bylaw 2017, that the stopping of vehicles be prohibited at all times on the east side of Kidson Terrace, commencing at its intersection with Iles Lane and extending in a northerly direction for a distance of 13 metres.
2. Revokes any previous resolutions pertaining to traffic controls made pursuant to any bylaw to the extent that they are in conflict with the traffic controls described in resolution 1 above.
3. Approves that these resolutions take effect when parking signage and/or road markings that evidence the restrictions described in the staff report are in place (or removed in the case of revocations).

Tim Scandrett/Keir Leslie

Carried

9. Waihoru / Spreydon-Cashmere 2021/22 Discretionary Response Fund Application - Huntsbury Community Centre.

Community Board Resolved SCCB/2021/00018 (Original officer recommendation accepted without change.)

Part C

That the Waihoru/Spreydon-Cashmere Community Board:

1. Approves a grant of \$768 from its 2020/21 Discretionary Response Fund to Huntsbury Community Centre towards the Huntsbury Trestles project.

Keir Leslie/Tim Scandrett

Carried

10. Waihoru/Spreydon-Cashmere Community Board Area Report - March 2021

Community Board Resolved SCCB/2021/00019 (Original officer recommendation accepted without change.)

Part B

That the Waihoru/Spreydon-Cashmere Community Board:

1. Receives the Waihoru/Spreydon-Cashmere Community Board Area Report for March 2021.

Melanie Coker/Callum Stewart-Ward

Carried

7. Briefing - Innovating Streets for People Projects in Beckenham and Selwyn

Staff briefed the Board on progress with the Innovating Streets for People projects in Beckenham and Selwyn.

Tim Scandrett left the meeting at 10.02am.

Community Board Resolved SCCB/2021/00020 (Original officer recommendation accepted without change.)

Part B

That the Waihoru/Spreydon-Cashmere Community Board:

1. Notes the information supplied during the Briefing on Innovating Streets for People Projects in Beckenham and Selwyn.

Keir Leslie/Callum Stewart-Ward

Carried

Melanie Coker left the meeting at 10.10am.

11. Elected Members' Information Exchange / Te Whakawhiti Whakaaro o Te Kāhui Amorangi

Part B

There was no information exchanged at this meeting.

Karakia Whakamutunga: Callum Ward

Meeting concluded at 10.11am.

CONFIRMED THIS 30th DAY OF MARCH 2021

KAROLIN POTTER
CHAIRPERSON

Unconfirmed

Item 3 - Minutes of Previous Meeting 17/03/2021

7. Correspondence - Traffic Safety at Cashmere Primary School

Reference / Te Tohutoro: 21/333466

Report of / Te Pou

Matua:

Amy Hart, Community Board Advisor, Amy.Hart@ccc.govt.nz

General Manager /

Pouwhakarae:

Mary Richardson, General Manager Citizens & Community,

Mary.Richardson@ccc.govt.nz

1. Purpose of Report / Te Pūtake Pūrongo

Correspondence has been received from:

Name	Subject
Cashmere Primary Te Pae Kereru Board of Trustees	Traffic Safety at Cashmere Primary School

2. Officer Recommendations / Ngā Tūtohu

That the Spreydon-Cashmere Community Board:

1. Receive the information in the correspondence report regarding traffic safety at Cashmere Primary School dated 30 March 2021.

Attachments / Ngā Tāpirihanga

No.	Title	Page
A ↓	Cashmere Primary Te Pae Kereru Board of Trustees - Road Safety Concern	14



p 03 326-6786
e office@cashmereprimary.school.nz
135 Hackthorne Rd, Cashmere
Christchurch, 8022

17 March 2021

Amy Hart
Waihoru/Spreydon-Cashmere Community Board
c/- Christchurch City Council
Christchurch

Dear Amy

Safety Concern - Hackthorne Road and Entrance to Hackthorne Gardens (141 Hackthorne Road)

We would like to formally request the Community Board's assistance to resolve an ongoing significant safety issue caused by u-turns from the parking area outside of the school's Hackthorne Road gate (p3 area) and also on the footpath at the entrance to Hackthorne Gardens at 141 Hackthorne Road.

We have discussed this issue previously with Council officers (parking and roading) and also with local police. We have not been able to resolve the issue to date because neither Council's parking officers nor police are able to ticket drivers who u-turn in these locations due to the roading marking in these areas.

Despite regular messaging in our school newsletter, at least 5-10 drivers carry out u-turns from the p3 area every morning and afternoon at a time of day when the road is very busy with cars, children, cyclists, a school road patrol crossing and buses. U-turns in this location are incredibly unsafe and have the potential to cause serious harm to children and local community members. There is very limited visibility of traffic which is coming down the hill, and this traffic includes cyclists and the Blue Bus. The cyclists are often local community children travelling to Cashmere High School. Near misses are common, and one of our staff was almost hit recently when standing on the footpath outside the school gate. If she had not moved in time, she would have been hit.

We also have an ongoing issue with drivers driving up onto the footpath outside the entrance to Hackthorne Gardens at 141 Hackthorne Road, where children and parents are walking, to u-turn. Again, there have been near misses in this location involving very young children who do not see the cars coming and do not move out of the way.

Constable Ross, our local school community officer (Christchurch South Police) has suggested that the Council paint double yellow lines along the centre of the road in these locations. This is a low cost solution which would create a visible deterrent for drivers and which could be enforced by police (u-turning across double yellow lines is a traffic offence). Please find attached an aerial photograph which shows the area concerned and location where the double yellow lines are required.

This is a very serious H&S concern for us and one that has been shared with us, on numerous occasions by our school whānau and community.

Together Empowering to *Thrive*

cashmereprimary.school.nz

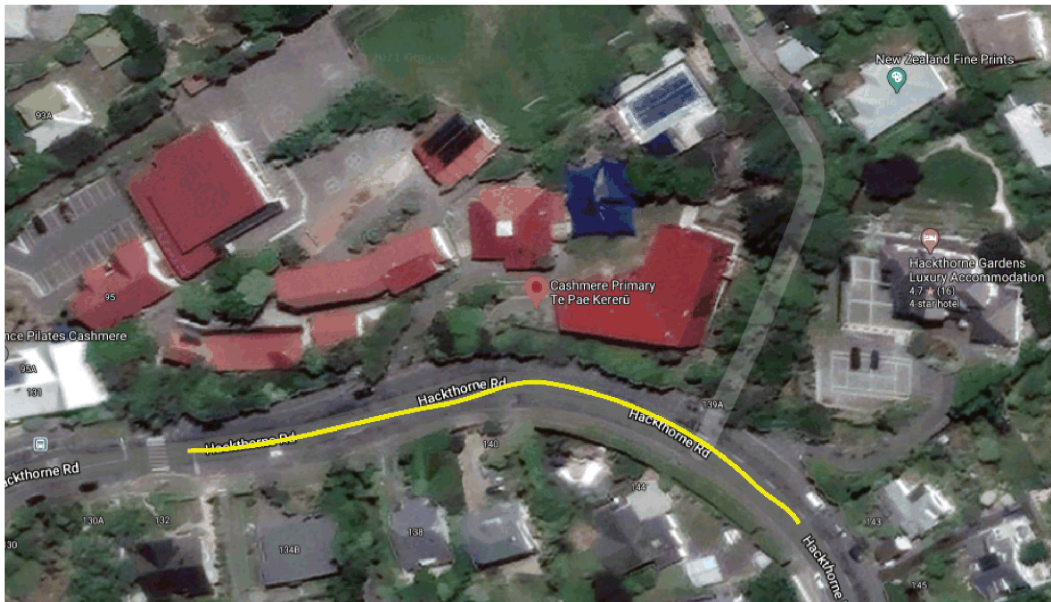


p 03 326-6786
e office@cashmereprimary.school.nz
135 Hackthorne Rd, Cashmere
Christchurch, 8022

We would be grateful for your urgent assistance in this matter and would be happy to meet with you at your convenience.

Yours faithfully

Monique Thomas
Presiding Member, Board of Trustees



Together Empowering to *Thrive*

cashmereprimary.school.nz

8. Correspondence - Street Names in Middleton

Reference / Te Tohutoro: 21/333615

Report of / Te Pou

Matua:

Amy Hart, Community Board Advisor, Amy.Hart@ccc.govt.nz

General Manager /

Pouwhakarae:

Mary Richardson, General Manager Citizens & Community,

Mary.Richardson@ccc.govt.nz

1. Purpose of Report / Te Pūtake Pūrongo

Correspondence has been received from:

Name	Subject
Citizen	Street Names in Middleton

2. Officer Recommendations / Ngā Tūtohu

That the Spreydon-Cashmere Community Board:

1. Receive the information in the correspondence report regarding street names in Middleton dated 30 March 2021.

Attachments / Ngā Tāpirihanga

No.	Title	Page
A ↓	Street Names in Middleton	18

There are some streets and a reserve in the suburb of Middleton that I believe are extremely inappropriately named. Specifically:

Marylands Place

Magdala Place

Nazareth Avenue

Marylands Reserve

My former brother-in-law was a 'pupil' at Marylands and during his time there was subjected to abuse.

My late cousin was an abandoned child at St. Joseph's Girls Orphanage and when that closed at Nazareth House Orphanage. At the age of 13 she was sent to Mount Magdala Home which operated a Magdalene Laundry. It's worth noting the Mount Magdala was an institute for "fallen women", something I can barely believe my cousin was at the age of 13.

This is not just about being politically correct (an expression I loathe); it's about recognizing that we should not as a society be honouring places where much harm was done to children.

In my opinion, it is time for the Christchurch to re-think the names of those places.

I am not a Christchurch resident, although did live there for a short period some years ago. I also have a family member who lives in an adjoining suburb to Middleton, and I know she finds those names inappropriate too.

9. Briefings - Council's Draft Climate Change Strategy

Reference / Te Tohutoro: 21/291688

Report of / Te Pou
Matua:

Amy Hart, Community Board Advisor, Amy.Hart@ccc.govt.nz

General Manager /
Pouwhakarae:

Mary Richardson, General Manager, Mary.Richardson@ccc.govt.nz

1. Purpose of Report / Te Pūtake Pūrongo

The Board will be briefed on the following:

Subject	Presenter(s)	Unit/Organisation
Council's Draft Climate Change Strategy	Carey Graydon, Senior Policy Analyst, Policy Team	Strategic Policy

2. Officer Recommendations / Ngā Tūtohu

That the Waihoru/Spreydon-Cashmere Community Board:

1. Notes the information supplied during the Briefing – Council's Draft Climate Change Strategy.

Attachments / Ngā Tāpirihanga

There are no attachments to this report.

10. Waihoru / Spreydon-Cashmere 2021/22 Discretionary Response Fund Applications: Multiple Sclerosis and Parkinson's Society of Canterbury, and Spreydon-Cashmere Community Board Off the Ground Fund

Reference / Te Tohutoro: 21/275038

Report of / Te Pou
Matua:

Jay Sepie, Community Development Advisor

General Manager /
Pouwhakarae:

Mary Richardson, General Manager Citizens and Community,
mary.richardson@ccc.govt.nz

1. Purpose of Report / Te Pūtake Pūrongo

- 1.1 The purpose of this report is for the Waihoru/Spreydon-Cashmere Community Board to consider applications for funding from its 2020/21 Discretionary Response Fund from the organisations listed below.

Funding Request Number	Organisation	Project Name	Amount Requested	Amount Recommended
62387	Multiple Sclerosis and Parkinson's Society of Canterbury	Specialist classes in St Martins	\$2000	\$2000
62472	Spreydon-Cashmere Community Board	Off the Ground Fund Supplement	\$1500	\$1500

- 1.2 At the time of writing there is currently a balance of \$108,893 remaining in the fund

2. Officer Recommendations / Ngā Tūtohu

That the Waihoru/Spreydon-Cashmere Community Board:

- Approves a grant of \$2000 from its 2020/21 Discretionary Response Fund to the Multiple Sclerosis and Parkinson's Society Canterbury towards the Specialist yoga classes in St Martins project.
- Approves a grant of \$1,500 from its 2020/21 Discretionary Response Fund to the Spreydon-Cashmere Off the Ground Fund Community Board project.

3. Key Points / Ngā Take Matua

Strategic Alignment / Te Rautaki Tīaroaro

- 3.1 The recommendations are strongly aligned to the Strategic Framework and in particular the strategic priority of enabling active and connected communities to own their future. They will provide resilient community outcomes to this priority.

Decision Making Authority / Te Mana Whakatau

- 3.2 The Community Board has the delegated authority to determine the allocation of the Discretionary Response Fund for each community
- 3.2.1 Allocations must be consistent with any policies, standards or criteria adopted by the Council
- 3.2.2 The Fund does not cover:
- Legal challenges or Environment Court challenges against the Council, Council Controlled organisations or Community Board decisions
 - Projects or initiatives that change the scope of a Council project or that will lead to ongoing operational costs to the Council (though Community Boards can recommend to the Council that it consider a grant for this purpose).

Assessment of Significance and Engagement / Te Aromatawai Whakahirahira

- 3.3 The decisions in this report are of low significance in relation to the Christchurch City Council's Significance and Engagement Policy.
- 3.4 The level of significance was determined by the number of people affected and/or with an interest.
- 3.5 Due to the assessment of low significance, no further community engagement and consultation is required.

Discussion / Kōrerorero

- 3.6 At the time of writing, the balance of the 2020/21 Discretionary Response Fund is as below.

Total Budget 2020/21	Granted To Date	Available for allocation	Balance If Staff Recommendations adopted
\$172,609	\$63,716	\$108,893	\$105,393

- 3.7 Based on the current Discretionary Response Fund criteria, the applications listed above are eligible for funding.
- 3.8 The attached Decision Matrices provide detailed information for the applications. This includes organisational details, project details, financial information and a staff assessment.

Attachments / Ngā Tāpirihanga

No.	Title	Page
A ↓	Decision Matrix 62387 DRF Spreydon-Cashmere - Multiple Sclerosis and Parkinson's Society	24
B ↓	Decision Matrix 62472 DRF Spreydon Cashmere - Off the Ground Fund Supplement	25

Confirmation of Statutory Compliance / Te Whakatūtutanga ā-Ture

Compliance with Statutory Decision-making Requirements (ss 76 - 81 Local Government Act 2002).

(a) This report contains:

- (i) sufficient information about all reasonably practicable options identified and assessed in terms of their advantages and disadvantages; and

- (ii) adequate consideration of the views and preferences of affected and interested persons bearing in mind any proposed or previous community engagement.
- (b) The information reflects the level of significance of the matters covered by the report, as determined in accordance with the Council's significance and engagement policy.

Signatories / Ngā Kaiwaitohu

Author	Jay Sepie - Community Development Advisor
Approved By	Jo Wells - Manager Community Governance, Spreydon-Cashmere

2020/21 DRF SPREYDON-CASHMERE DECISION MATRIX

Priority Rating

One	Meets all eligibility criteria and contributes significantly to Funding Outcomes and Priorities. Highly recommended for funding.
Two	Meets all eligibility criteria and contributes to Funding Outcomes and Priorities. Recommended for funding.
Three	Meets all eligibility criteria and contributes to Funding Outcomes and Priorities but to a lesser extent than Priority 2 applications. Not recommended for funding.
Four	Meets all eligibility criteria and has minimum contribution to Funding Outcomes and Priorities / Insufficient information provided by applicant (in application and after request from Advisor) / Other funding sources more appropriate. Not recommended for funding.

00062387	Organisation Name	Name and Description	Total Cost	Contribution Sought Towards	Staff Recommendation	Priority
	Multiple Sclerosis and Parkinson's Society of Canterbury	Specialist yoga classes in St Martins Support is sought for bespoke and professionally supported yoga classes provided to people with multiple sclerosis and Parkinson's disease who live in South Christchurch.	\$ 6,617 Requested \$ 2,000 (30% requested)	Wages - \$2,000	\$ 2,000 That the Waihoru/Spreydon-Cashmere Community Board approves a grant of \$2,000 from its 2020-21 Discretionary Response Fund to Multiple Sclerosis and Parkinson's Society of Canterbury towards the Specialist Yoga Classes in St Martins project.	2

Organisation Details

Service Base: 49 Sir William Pickering Drive, Burnside
Legal Status: Incorporated Society
Established: 22/03/1962
Target Groups: Disability
Annual Volunteer Hours: 3358
Participants: 35

Alignment with Council Strategies

- Strengthening Communities
- Equity and Access for People with Disabilities Policy

CCC Funding History

2019/20 - \$6,000 (community support services) SCF Metro
2018/19 - \$5,000 (rent) DRF Metro

Other Sources of Funding

None at this stage.

Staff Assessment

The Multiple Sclerosis and Parkinson's Society of Canterbury (MSPC) was formed in 1999 as one support organisation from two previously separate groups. The Society works to support people with the two named conditions to live well in the community. It employs professionally trained staff to advise participants and supervise activities. Within the next 12 months the Society expects to be co-located with Dementia Canterbury at a new wellness centre at 70 Langdons Road, Papanui.

A key method for the Society to help keep people healthy, reduce symptoms, and encourage peer relationships is through exercise. The current operational base in Burnside has a gym where specialised exercise classes and open gym use can be supervised. The Society more recently has delivered yoga classes at the Council owned St Martins Community Centre. This has made access to bespoke yoga exercise easier for people for people in Spreydon, Cashmere, and neighbouring south Christchurch communities. The cost is only partly met by subscription fees of \$8 per session per person, and would become a barrier to participation if fully charged.

The yoga class at St Martins Community Centre is with a yoga instructor who has been trained in working with neurological conditions. Participants are also supervised by the Physiotherapist from MSPC. The Society's Community Nurses and Physiotherapist make the referrals of people living in the south of Christchurch to this class. Classes have been tailored to suit people with multiple sclerosis or Parkinson's disease, which due to the individualised support costs involved means that a full user pays system would be largely unaffordable.

It is intended that over 12 months, approximately 35 people will benefit from the weekly yoga classes and the social connections that result. The Society intend to seek alternative funding sources for the following 12 months.

2020/21 DRF SPREYDON-CASHMERE DECISION MATRIX – OFF THE GROUND FUND SUPPLEMENT

Priority Rating

One	Meets all eligibility criteria and contributes significantly to Funding Outcomes and Priorities. Highly recommended for funding.
Two	Meets all eligibility criteria and contributes to Funding Outcomes and Priorities. Recommended for funding.
Three	Meets all eligibility criteria and contributes to Funding Outcomes and Priorities but to a lesser extent than Priority 2 applications. Not recommended for funding.
Four	Meets all eligibility criteria and has minimum contribution to Funding Outcomes and Priorities / Insufficient information provided by applicant (in application and after request from Advisor) / Other funding sources more appropriate. Not recommended for funding.

00062472	Organisation Name Spreydon-Cashmere Community Board	Name and Description Off The Ground Fund Supplement The Spreydon-Cashmere Off The Ground Fund supplies timely access to small grants for voluntary and community projects, especially those that catalyse a "moment of joy" resulting from local cooperation and social connection.	Total Cost \$ 1,500 Requested \$ 1,500 (100% requested)	Contribution Sought Towards Grants - \$1,500	Staff Recommendation \$ 1,500 That the Waihoru/Spreydon-Cashmere Community Board approves a grant of \$1,500 from its 2020-21 Discretionary Response Fund towards the Spreydon-Cashmere Off The Ground Fund.	Priority 2
----------	---	---	---	--	--	-----------------------------

Organisation Details Service Base: N/A Legal Status: N/A Established: Target Groups: Children/Youth Annual Volunteer Hours: Participants: 250 Alignment with Council Strategies <ul style="list-style-type: none"> Strengthening Communities Community Board Plan CCC Funding History 2020/21 - \$2,500 (OTGF) SC DRF 2019/20 - \$2,000 (OTGF) SC DRF 2018/19 - \$1,000 (OTGF) SC DRF 2018/19 - \$1,500 (OTGF) SC DRF 2017/18 - \$799 (OTGF) SC DRF	Other Sources of Funding Nil Staff Assessment The Off The Ground Fund has been provided by the Spreydon-Cashmere Community Board for several years. It was designed to provide fast access to very small grants to support projects of community benefit that enhance community connection and participation. For the 2020/21 financial year, an initial project sum of \$2,500 was approved by the Community Board. Despite disruptions caused by COVID-19 Levels that directed lock-downs and limited real life social contact, the demand for this grant type has continued at a modest but steady rate. The fund is administered by Spreydon-Cashmere Community Governance staff. Applications are recommended and circulated to Community Board members for a decision finally determined by the Community Board Chair, which generally occurs within a week of receiving an application. Grant payment is made upon receipt of a small report and proof of expenditure. This year, there were two criteria changes: the maximum amount for a grant was increased from \$250 to \$300; and instead of being restricted to a single grant, a same or a similar event can be applied for in subsequent years by community project groups. The initial allocation of \$2,000 is now almost fully expended. A further allocation of \$1,500 is expected to be sufficient for the remainder of the financial year. To date seven projects have been approved grants, of which five have been paid amounts ranging between \$145 and \$300. The application process has recently been provided on line, with some applicants still preferring to apply on hard copy forms.
--	---

11. Submissions

Reference / Te Tohutoro: 21/302203

Report of / Te Pou

Matua:

Amy Hart, Community Board Advisor, amy.hart@ccc.govt.nz

General Manager /

Pouwhakarae:

Mary Richardson, General Manager Citizens and Community,
mary.richardson@ccc.govt.nz

1. Purpose of the Report / Te Pūtake Pūrongo

- 1.1 The purpose of this report is for the Board to decide whether it wishes to make a submission on the Council's Draft Long Term Plan 2021-31, Draft Climate Change Strategy 2021 and Initial Proposal on the Representation Review. This is a staff generated report.
- 1.2 The decisions in this report are of low significance in relation to the Christchurch City Council's Significance and Engagement Policy. While the proposals will have an impact on many Christchurch residents, the Council is the final decision-maker and the Board is simply considering whether to provide submissions.

2. Officer Recommendations / Ngā Tūtohu

That the Waihoru/Spreydon-Cashmere Community Board:

1. Receive the information in the Submissions report.
2. Decide whether to provide a submission on the Council's Draft Long Term Plan 2021-31, and delegate authority to the Chairperson and Deputy Chairperson to approve the submission.
3. Decide whether to provide a submission on the Council's Draft Climate Change Policy 2021, and delegate authority to the Chairperson and Deputy Chairperson to approve the submission.
4. Decide whether to provide a submission on the Council's Initial Proposal on the Representation Review, and delegate authority to the Chairperson and Deputy Chairperson to approve the submission.

3. Reason for Report Recommendations / Ngā Take mō te Whakatau

- 3.1 The reason for the report recommendations is that the proposals are strategic documents that affect local communities.

4. Alternative Options Considered / Ētahi atu Kōwhiringa

- 4.1 An alternative option is for the Board not to provide submissions.
- 4.2 The advantage of this option is that it would require less Board and staff time.
- 4.3 The disadvantage of this option is that the Board would not have an opportunity to provide feedback on strategic documents that affect local communities.

5. Detail / Te Whakamahuki

- 5.1 **Draft Long Term Plan 2021-31** – The Council's 10-year \$13.1 billion budget focuses on investing in core infrastructure, delivering key services and positioning Christchurch and Banks Peninsula for the future. More information is available [here](#).
- 5.2 **Draft Climate Change Strategy 2021** – The Council's Draft Climate Change Strategy is a long-term framework for Christchurch's climate change journey. It is part of a wider conversation about how everyone can work together to reduce greenhouse gas emissions, prepare for the changes that are ahead, and respond to the ongoing effects of climate change. More information is available [here](#).
- 5.3 **Initial Proposal on the Representation Review** – Local authorities are required by the Local Electoral Act 2001 to review their representation arrangements at least once every six years. Having conducted a Representation Review in 2015 for the 2016 local body elections, the Council is required to undertake a representation review for the 2022 local body elections. More information is available [here](#).
- 5.4 The decision affects the following wards/Community Board areas:
 - 5.4.1 Waihoru/Spreydon-Cashmere

6. Policy Framework Implications / Ngā Hīraunga ā- Kaupapa here

Strategic Alignment / Te Rautaki Tīaroaro

- 6.1 Providing submissions supports the following Strategic Priority in the Council's Strategic Framework: Enabling active and connected communities to own their future.
- 6.2 This report supports the [Council's Long Term Plan \(2018 - 2028\)](#):
 - 6.2.1 Activity: Governance & Decision Making
 - Level of Service: 4.1.18 Participation in and contribution to Council decision-making.

Policy Consistency / Te Whai Kaupapa here

- 6.3 The decision is consistent with Council's Plans and Policies.

Impact on Mana Whenua / Ngā Whai Take Mana Whenua

- 6.4 The decision does not involve a significant decision in relation to ancestral land or a body of water or other elements of intrinsic value, therefore this decision does not specifically impact Mana Whenua, their culture and traditions.

Climate Change Impact Considerations / Ngā Whai Whakaaro mā te Āhuarangi

- 6.5 Making submissions provides an opportunity to raise climate change issues.

Accessibility Considerations / Ngā Whai Whakaaro mā te Hunga Hauā

- 6.6 Making submissions provides an opportunity to raise accessibility issues.

7. Resource Implications / Ngā Hīraunga Rauemi

Capex/Opex / Ngā Utu Whakahaere

- 7.1 Cost to Implement – Staff time.
- 7.2 Maintenance/Ongoing costs – Nil.
- 7.3 Funding Source - Community Governance Team operational budget.

Other / He mea anō

7.4 Not applicable.

8. Legal Implications / Ngā Hīraunga ā-Ture

Statutory power to undertake proposals in the report / Te Manatū Whakahaere Kaupapa

8.1 The Board has the delegation to decide whether it would like to make submissions on Council proposals.

Other Legal Implications / Ētahi atu Hīraunga-ā-Ture

8.2 There is no legal context, issue or implication relevant to this decision.

8.3 This report has not been reviewed and approved by the Legal Services Unit.

9. Risk Management Implications / Ngā Hīraunga Tūraru

9.1 If the Board does not provide submissions on the proposals, there is a risk that the Board would have missed an opportunity to influence strategic documents that affects local communities.

9.2 This risk would be eliminated if the Board decided to provide submissions on the proposals.

Attachments / Ngā Tāpirihanga

There are no attachments to this report.

In addition to the attached documents, the following background information is available:

Document Name	Location / File Link
Not applicable	Not applicable

Confirmation of Statutory Compliance / Te Whakatūtutanga ā-Ture

Compliance with Statutory Decision-making Requirements (ss 76 - 81 Local Government Act 2002).

(a) This report contains:

- (i) sufficient information about all reasonably practicable options identified and assessed in terms of their advantages and disadvantages; and
- (ii) adequate consideration of the views and preferences of affected and interested persons bearing in mind any proposed or previous community engagement.

(b) The information reflects the level of significance of the matters covered by the report, as determined in accordance with the Council's significance and engagement policy.

Signatories / Ngā Kaiwaitohu

Author	Amy Hart - Community Board Advisor
Approved By	Jo Wells - Manager Community Governance, Spreydon-Cashmere

12. Elected Members' Information Exchange / Te Whakawhiti Whakaaro o Te Kāhui Amorangi

This item provides an opportunity for Board Members to update each other on recent events and/or issues of relevance and interest to the Board.