

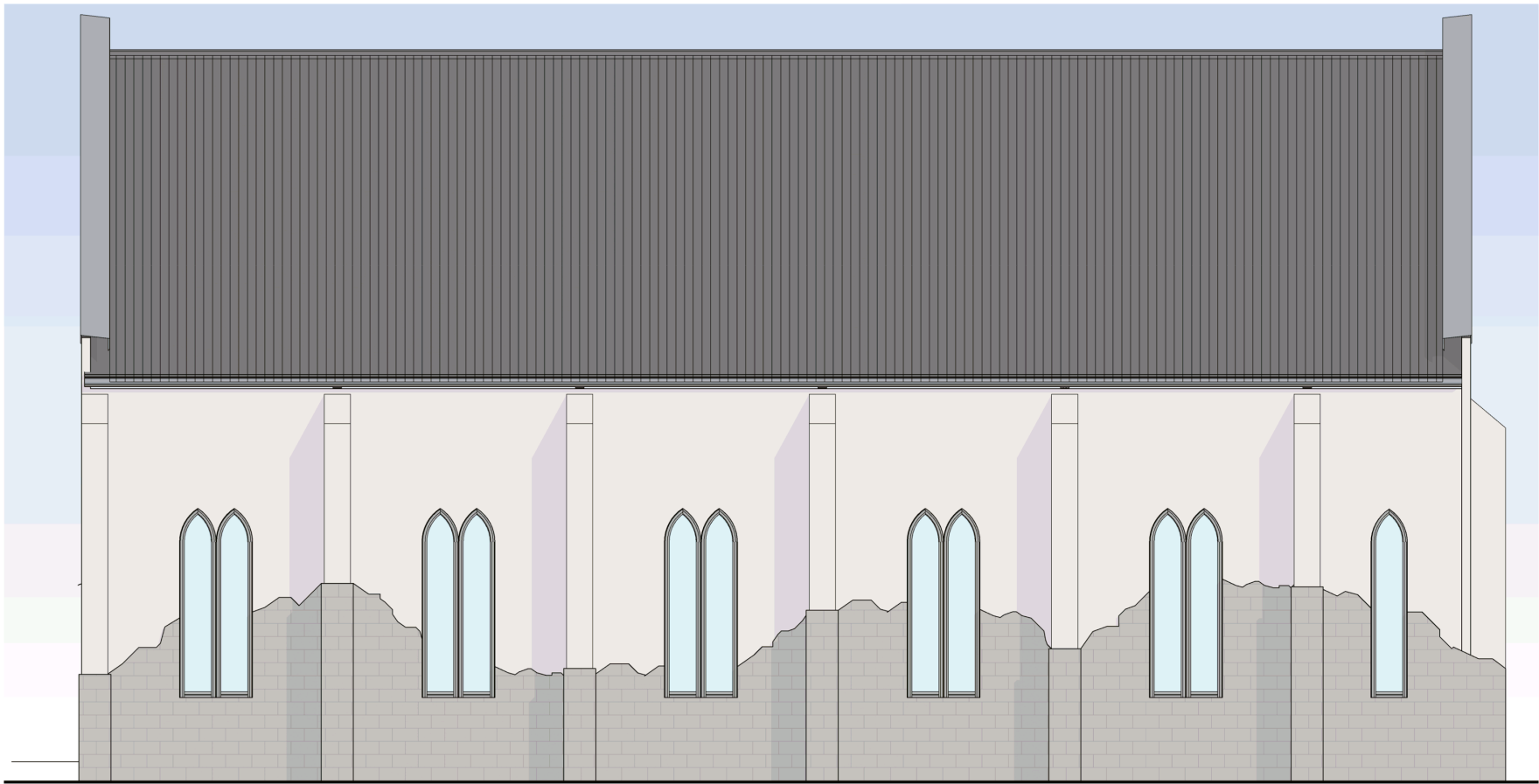
Sustainability and Community Resilience Committee MINUTES ATTACHMENTS

Date: Wednesday 24 March 2021
Time: 9.30am
Venue: Council Chambers, Civic Offices,
53 Hereford Street, Christchurch

TABLE OF CONTENTS	PAGE
4.2 Sydenham Heritage Trust	
A. Colombo Street Elevation	3
5.1 Deputations by Appointment	
A. Photos of Shand's and Trinity Congregational Church	4
7 Te Tira Kāhikuhiku - December, February and March Minutes	
A. Presentation from Chrissie Williams	6



COLOMBO ST ELEVATION
1 : 50



BROUGHAM ST ELEVATION
1 : 50

CONCEPT DESIGN

This drawing and its contents are the property of Engenium Limited. Any unauthorised use or reproduction, in full or in part, is forbidden.

SYDENHAM HERITAGE
TRUST

343 COLOMBO STREET

TITLE	ELEVATIONS
FILE	E1500
SCALE	1 : 50 @ A1
DATE	11/12/19
SHEET	AC-04
SHEET SIZE	A1
REVISION	A







Sustainability and Community Resilience Committee 24 March 2021

Chrissie Williams, Independent Chair

Te Tira Kāhikuhiku

Red Zones Transformative Land
Use Consultative Group



Report

- Recent meetings minutes
 - 2 December 2020
 - 3 February 2021
 - 8 March 2021
- Summaries
 - Recommendations made to LINZ for leases/licenses
 - Presentations to Te Tira Kāhikuhiku
 - Grants from the Red Zones Transformative Fund

Current issues

Length of leases/licenses

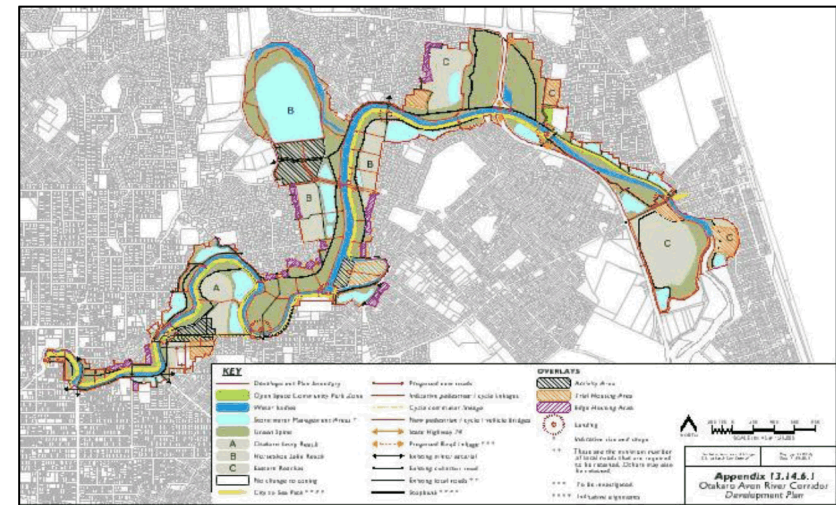
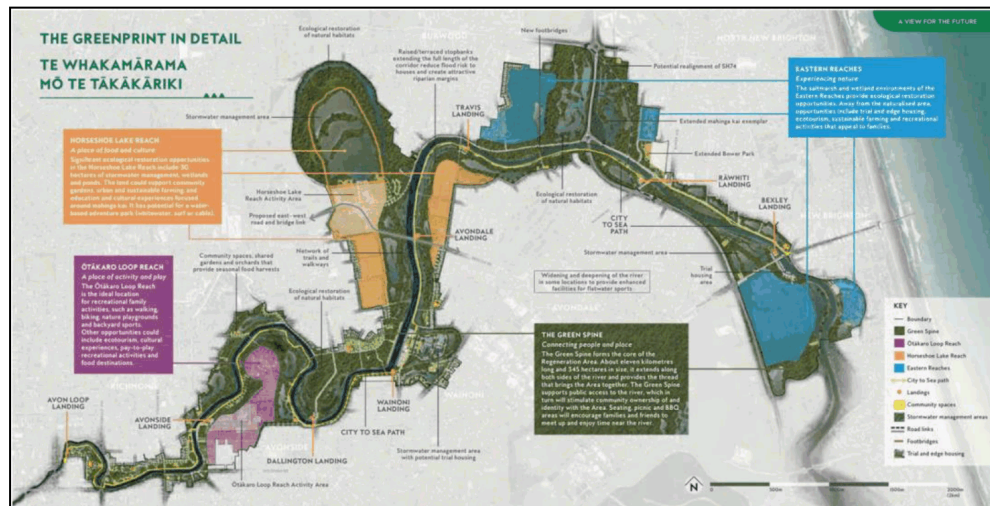
- 6 month limit on a lease/license granted by LINZ for a Transitional Land Use
 - Any proposal for longer than 6 months directed to CCC
 - CCC needs to be ready to consider applications for leases/licenses based on policy approved Nov. 2020
 - Suggest CCC negotiates with LINZ for decisions on transitional land uses to be delegated to CCC

Current issues

Long-term co-governance

- Long-term co-governance
 - Unlikely to be in place before end of calendar year
 - Te Tira Kāhikuhiku to continue for another year
 - Surplus budget to be carried forward in draft LTP
 - For co-governance group/entity to be effective Council will need to delegate decision making and provide significant funding

ŌARC Regeneration Plan and Christchurch District Plan



ŌARC Regeneration Plan
Vision and Objectives
Preferred land uses

Christchurch District Plan
Objectives, Policies and Rules
Development Plan

Current issues

Revocation of GCRA Act

- Greater Christchurch Regeneration Act 2016 (amended in 2020)
 - Sections related to recovery plans and regeneration plans to be revoked on 30 June 2021
 - ŌARC Regeneration Plan provisions inserted into the Christchurch District Plan
 - Regeneration Plan still a useful guiding document
 - Could Council 'adopt' the ŌARC Regeneration Plan as a policy/strategy?