

**Waihoru/
Spreydon-Cashmere Community Board
AGENDA**

Notice of Meeting:

An ordinary meeting of the Waihoru/Spreydon-Cashmere Community Board will be held on:

Date: Tuesday 2 February 2021
Time: 5pm
Venue: Boardroom, Beckenham Service Centre,
66 Colombo Street, Beckenham

Membership

Chairperson	Karolin Potter
Deputy Chairperson	Lee Sampson
Members	Melanie Coker
	Keir Leslie
	Tim Scandrett
	Callum Stewart-Ward

Jo Wells
Manager Community Governance, Spreydon-Cashmere
941 6451
jo.wells@ccc.govt.nz
www.ccc.govt.nz

Note: The reports contained within this agenda are for consideration and should not be construed as Council policy unless and until adopted. If you require further information relating to any reports, please contact the person named on the report.

To view copies of Agendas and Minutes, visit:

<https://www.ccc.govt.nz/the-council/meetings-agendas-and-minutes/>



Developing Resilience in the 21st Century

Strategic Framework

Whiria ngā whenu o ngā papa,
honoa ki te maurua tāuiki

Bind together the strands of each mat and join
together with the seams of respect and reciprocity

Ōtautahi-Christchurch is a city of opportunity for all

Open to new ideas, new people and new ways of doing things – a city where anything is possible

Principles

Being open,
transparent and
democratically
accountable

Promoting
equity, valuing
diversity and
fostering inclusion

Taking an inter-generational approach
to sustainable development,
prioritising the social, economic
and cultural wellbeing of
people and communities
and the quality of the
environment, now
and into the
future

Building on the
relationship with
Te Rūnanga o Ngāi Tahu
and the Te Hononga-Council
Papatipu Rūnanga partnership,
reflecting mutual understanding
and respect

Ensuring
the diversity
and interests of
our communities
across the city and the
district are reflected in
decision-making

Actively collaborating and
co-operating with other
local, regional
and national
organisations

Community Outcomes

Resilient communities

Strong sense of community
Active participation in civic life
Safe and healthy communities
Celebration of our identity
through arts, culture, heritage,
sport and recreation
Valuing the voices of all cultures
and ages (including children)

Liveable city

Vibrant and thriving city centre
Sustainable suburban and
rural centres
A well connected and accessible
city promoting active and
public transport
Sufficient supply of, and
access to, a range of housing
21st century garden city
we are proud to live in

Healthy environment

Healthy water bodies
High quality drinking water
Unique landscapes and
indigenous biodiversity are
valued and stewardship
exercised
Sustainable use of resources
and minimising waste

Prosperous economy

Great place for people, business
and investment
An inclusive, equitable economy
with broad-based prosperity
for all
A productive, adaptive and
resilient economic base
Modern and robust city
infrastructure and community
facilities

Strategic Priorities

Enabling active
and connected
communities
to own their future

Meeting the challenge
of climate change
through every means
available

Ensuring a high quality
drinking water supply
that is safe and
sustainable

Accelerating the
momentum
the city needs

Ensuring rates are
affordable and
sustainable

Ensuring we get core business done while delivering on our Strategic Priorities and achieving our Community Outcomes

Engagement with
the community and
partners

Strategies, Plans and
Partnerships

Long Term Plan
and Annual Plan

Our service delivery
approach

Monitoring and
reporting on our
progress

Part A	Matters Requiring a Council Decision
Part B	Reports for Information
Part C	Decisions Under Delegation

TABLE OF CONTENTS

Mihi/Karakia Timatanga	4
Waiata	
C 1. Apologies / Ngā Whakapāha.....	4
B 2. Declarations of Interest / Ngā Whakapuaki Aronga	4
C 3. Confirmation of Previous Minutes / Te Whakaāe o te hui o mua	4
B 4. Public Forum / Te Huinga Whānui.....	4
B 5. Deputations by Appointment / Ngā Huinga Whakaritenga	4
B 6. Presentation of Petitions / Ngā Pākikitanga.....	4
STAFF REPORTS	
C 7. Cashmere View Playground - Basketball Court Request	15
C 8. Waihoru/Spreydon-Cashmere 2020-21 Discretionary Response Fund Report Needs Analysis/Feasibility Adults Playground	21
CA 9. Cashmere / Worsley / Hoon Hay Road - Intersection Upgrade	25
C 10. Proposed New Mountain Bike Track in Montgomery Spur Reserve	33
C 11. Waihoru/Spreydon-Cashmere Community Board Meeting Schedule 2021.....	37
B 12. Elected Members' Information Exchange / Te Whakawhiti Whakaaro o Te Kāhui Amorangi.....	41
Karakia Whakamutunga	

Mihi/Karakia Timatanga

Waiata

1. Apologies / Ngā Whakapāha

At the close of the agenda no apologies had been received.

2. Declarations of Interest / Ngā Whakapuaki Aronga

Members are reminded of the need to be vigilant and to stand aside from decision making when a conflict arises between their role as an elected representative and any private or other external interest they might have.

3. Confirmation of Previous Minutes / Te Whakaāe o te hui o mua

That the minutes of the Waihoru/Spreydon-Cashmere Community Board meeting held on [Tuesday, 15 December 2020](#) be confirmed (refer page 5).

4. Public Forum / Te Huinga Whānui

A period of up to 30 minutes will be available for people to speak for up to five minutes on any issue that is not the subject of a separate hearings process.

4.1 Hoon Hay Community Association Trust

Jenny Goodman, Deputy Chair of Hoon Hay Community Association Trust, will speak to the Board about the Trust's Strategic Plan, which is under development.

4.2 Cycle Safety

Sophia White, resident, will speak about concerns with cycle safety in the Board area.

5. Deputations by Appointment / Ngā Huinga Whakaritenga

Deputations may be heard on a matter or matters covered by a report on this agenda and approved by the Chairperson.

There were no deputations by appointment at the time the agenda was prepared.

6. Presentation of Petitions / Ngā Pākikitanga

There were no petitions received at the time the agenda was prepared.

Waihoru/ Spreydon-Cashmere Community Board OPEN MINUTES

Date: Tuesday 15 December 2020
Time: 8.04am
Venue: Boardroom, Beckenham Service Centre,
66 Colombo Street, Beckenham

Present

Chairperson	Karolin Potter
Deputy Chairperson	Lee Sampson
Members	Melanie Coker
	Keir Leslie
	Tim Scandrett
	Callum Stewart-Ward

Jo Wells
Manager Community Governance, Spreydon-Cashmere
941 6451
jo.wells@ccc.govt.nz
www.ccc.govt.nz

To view copies of Agendas and Minutes, visit:
www.ccc.govt.nz/the-council/meetings-agendas-and-minutes/

Part A Matters Requiring a Council Decision

Part B Reports for Information

Part C Decisions Under Delegation

Mihi/Karakia Timatanga: Lee Sampson

Waiata: The Board sang a waiata to open the meeting.

The agenda was dealt with in the following order.

1. Apologies / Ngā Whakapāha

Part C

Community Board Resolved SCCB/2020/00092

That the apology received from Tim Scandrett be accepted.

Lee Sampson/Melanie Coker

Carried

2. Declarations of Interest / Ngā Whakapuaki Aronga

Part B

There were no declarations of interest recorded.

3. Confirmation of Previous Minutes / Te Whakaāe o te hui o mua

Part C

Community Board Resolved SCCB/2020/00093

That the minutes of the Waihoru/Spreydon-Cashmere Community Board meeting held on Tuesday, 1 December 2020 be confirmed.

Lee Sampson/Callum Stewart-Ward

Carried

4. Public Forum / Te Huinga Whānui

Part B

4.1 Rowley Mamaz – Community Service Awards

Tiresa Sio, Susannah Muamua, Laiga Tomuli and Julie Ausage, the Rowley Mamaz who have been involved with a myriad of community events for over ten years, were scheduled to come to thank the Board for their recent Community Service Award, but did not attend.

4.2 Begging at Barrington Mall

Jill Kearns, Centre Manager, and Katie Nash, Centre Administrator, of Barrington Mall, spoke about ongoing concerns with begging on Council property near Barrington Mall. Ms Kearns has received many complaints from customers and has contacted the Police on numerous occasions due to intimidating and aggressive behaviour. Ms Kearns noted that an individual often stands on the pedestrian island at the entry/exit to Barrington Mall from

Barrington Street and has stepped into traffic to get the attention of drivers. At other times, an individual stands on the nearby footpath and has blocked older adults from passing by.

After questions from members, the Chairperson thanked Ms Kearns and Ms Nash for their presentation.

Part B

The Waihoru/Spreydon-Cashmere Community Board agreed to request staff advice on whether there are any traffic safety or footpath obstruction issues resulting from the proximity of any individuals begging close to the entry/exit to Barrington Mall on Barrington Street.

4.3 Environment Canterbury – Findings from Odour Assessment Pilot

Ruth Sarson, Resource Management Officer, Environment Canterbury (ECan), presented findings from a pilot that assessed odours near Bupa Care Services Limited in Cashmere. Ms Sarson also explained the approach used, including community engagement and the Smelt-It reporting application.

ECan confirmed that Bupa is not meeting its permitted activity status. Next, it will look at a collaborative approach with Bupa to gain compliance and to balance needs of the community.

The Board expressed its appreciation for ECan working innovatively to resolve this longstanding issue. After questions from members, the Chairperson thanked Ms Sarson for her presentation.

Attachments

A PowerPoint Presentation

4.4 Update on the Age-Friendly Public Transport Project

Dr Angela Curl, Senior Lecturer, Otago University, spoke regarding the Spreydon-Cashmere Age-Friendly Public Transport Project, highlighting the proportion of the population in the Spreydon-Cashmere area with accessibility to bus stops within 400 metres or 250 metres of their home.

Next, based on the statistics, the project will measure access to facilities such as health facilities and shopping centres, measure access to bus stops with frequent buses, audit areas to locate additional seating and optimise seating for people aged 65+.

The Board suggested that the project could also measure which bus stops have shelter and which high frequency bus stops have seating.

Dr Curl will present the additional findings to the Board in the New Year.

After questions from members, the Chairperson thanked Dr Curl for her presentation.

Attachments

A Preliminary Report

5. Deputations by Appointment / Ngā Huinga Whakaritenga

Part B

5.1 Parking in Rose Street

Wayne Nolan, resident of Rose Street, spoke regarding Item 7 – Correspondence – Parking in Rose Street. Mr Nolan highlighted the limited parking around this area as protected grass verges block cars from parking on the side of the road. Mr Nolan also noted that steel waratahs and large rocks that have been placed on the roadside to protect the verges could pose a health and safety risk to passers-by, including cyclists who could fall onto them.

Mr Nolan suggested the grass verges on the roadside be sealed to provide parking.

Item 7 of these minutes refers.

After questions from the Board members, the Chairperson thanked Mr Nolan for his deputation.

Part B

The Waihoru/Spreydon-Cashmere Community Board agreed to:

1. Request that staff consider addressing the issues raised in the deputation and correspondence (refer Item 7 of these minutes) regarding parking on Rose Street as part of the Capital Regeneration Acceleration Fund (CRAF) programme or other budgets.
2. Request that staff investigate whether steel waratahs and large rocks on the roadside of Rose Street pose a health and safety risk to passers-by such as cyclists.

6. Presentation of Petitions / Ngā Pākikitanga

Part B

There was no presentation of petitions.

7. Correspondence - Parking in Rose Street

Community Board Resolved SCCB/2020/00094 (Original staff recommendation accepted without change.)

Part B

That the Spreydon-Cashmere Community Board:

1. Receive the information in the correspondence report regarding parking in Rose Street dated 15 December 2020.

Lee Sampson/Keir Leslie

Carried

8. Correspondence - Request for Tree Removal

Officer Recommendations / Ngā Tūtohu

That the Spreydon-Cashmere Community Board:

1. Receive the information in the correspondence report regarding a resident's request for removal of a tree dated 15 December 2020.

Community Board Resolved SCCB/2020/00095

Part B

That the Spreydon-Cashmere Community Board:

1. Receive the information in the correspondence report regarding a resident's request for removal of a tree dated 15 December 2020.
2. Request that staff investigate whether pruning the tree on Rossmore Terrace will resolve the issues raised in the correspondence.
3. If pruning the tree on Rossmore Terrace does not resolve the issues raised, request that staff provide further information regarding the tree for the Board to consider at the a future meeting.

Callum Stewart-Ward/Keir Leslie

Carried

9. Spreydon-Cashmere 2020-21 Discretionary Response Fund Application - Landsdowne Terrace Playcentre

Community Board Resolved SCCB/2020/00096 (Original staff recommendation accepted without change.)

Part C

That the Waihoru/Spreydon-Cashmere Community Board:

1. Approves a grant of \$1,050 from its 2020/21 Discretionary Response Fund to Landsdowne Terrace Playcentre towards the Landsdowne Community Centre Mural.

Keir Leslie/Melanie Coker

Carried

10. Waihoru/Spreydon-Cashmere Community Board Recess Committee 2020-2021

Officer Recommendations / Ngā Tūtohu

That the Waihoru/Spreydon-Cashmere Community Board:

1. Appoint a Recess Committee, comprising the Board Chairperson, Deputy Chairperson and any two other members available, to be authorised to exercise the delegated powers of the Waihoru/Spreydon-Cashmere Community Board for the period following its ordinary meeting on 15 December 2020 up until its next ordinary meeting in 2021.
2. Note that any such delegation exercised by the Board's Recess Committee will be reported to the Board for record purposes.
3. Note that any meeting convened of the Board's Recess Committee will be publically notified and the details forwarded to all Board members.

Community Board Resolved SCCB/2020/00097

Part C

That the Waihoru/Spreydon-Cashmere Community Board:

1. Appoint a Recess Committee, comprising the Board Chairperson, and any two other members available, to be authorised to exercise the delegated powers of the Waihoru/Spreydon-Cashmere Community Board for the period following its ordinary meeting on 15 December 2020 up until its next ordinary meeting in 2021.
2. Note that any such delegation exercised by the Board's Recess Committee will be reported to the Board for record purposes.
3. Note that any meeting convened of the Board's Recess Committee will be publically notified and the details forwarded to all Board members.

Keir Leslie/Callum Stewart-Ward

Carried

11. Waihoru/Spreydon-Cashmere Community Board Meeting Schedule 2021

Officer Recommendations / Ngā Tūtohu

That the Waihoru/Spreydon-Cashmere Community Board:

1. Adopt one of the following options as its schedule for ordinary meetings in 2021:

a. Option 1 – Mondays

Date	Time	Location
Monday 1 February 2021	4.30pm or 5pm	Boardroom, Beckenham Service Centre, 66 Colombo Street
Monday 15 February 2021	4.30pm or 5pm	Boardroom, Beckenham Service Centre, 66 Colombo Street
Monday 1 March 2021	4.30pm or 5pm	Boardroom, Beckenham Service Centre, 66 Colombo Street
Monday 15 March 2021	4.30pm or 5pm	Boardroom, Beckenham Service Centre, 66 Colombo Street
Monday 29 March 2021	4.30pm or 5pm	Boardroom, Beckenham Service Centre, 66 Colombo Street
Monday 12 April 2021	4.30pm or 5pm	Boardroom, Beckenham Service Centre, 66 Colombo Street
Monday 3 May 2021	4.30pm or 5pm	Boardroom, Beckenham Service Centre, 66 Colombo Street
Monday 17 May 2021	4.30pm or 5pm	Boardroom, Beckenham Service Centre, 66 Colombo Street
Monday 31 May 2021	4.30pm or 5pm	Boardroom, Beckenham Service Centre, 66 Colombo Street
Monday 14 June 2021	4.30pm or 5pm	Boardroom, Beckenham Service Centre, 66 Colombo Street
Monday 28 June 2021	4.30pm or 5pm	Boardroom, Beckenham Service Centre, 66 Colombo Street
Monday 12 July 2021	4.30pm or 5pm	Boardroom, Beckenham Service Centre, 66 Colombo Street
Monday 2 August 2021	4.30pm or 5pm	Boardroom, Beckenham Service Centre, 66 Colombo Street

Monday 16 August 2021	4.30pm or 5pm	Boardroom, Beckenham Service Centre, 66 Colombo Street
Monday 6 September 2021	4.30pm or 5pm	Boardroom, Beckenham Service Centre, 66 Colombo Street
Monday 20 September 2021	4.30pm or 5pm	Boardroom, Beckenham Service Centre, 66 Colombo Street
Monday 4 October 2021	4.30pm or 5pm	Boardroom, Beckenham Service Centre, 66 Colombo Street
Monday 18 October 2021	4.30pm or 5pm	Boardroom, Beckenham Service Centre, 66 Colombo Street
Monday 1 November 2021	4.30pm or 5pm	Boardroom, Beckenham Service Centre, 66 Colombo Street
Monday 15 November 2021	4.30pm or 5pm	Boardroom, Beckenham Service Centre, 66 Colombo Street
Monday 6 December 2021	4.30pm or 5pm	Boardroom, Beckenham Service Centre, 66 Colombo Street

- i. Note that ordinary meetings will be immediately preceded by briefings.

b. Option 2 – Wednesdays

Date	Time	Location
Wednesday 3 February 2021	5.30pm	Boardroom, Beckenham Service Centre, 66 Colombo Street
Wednesday 17 February 2021	8am	Boardroom, Beckenham Service Centre, 66 Colombo Street
Wednesday 3 March 2021	5.30pm	Boardroom, Beckenham Service Centre, 66 Colombo Street
Wednesday 17 March 2021	8am	Boardroom, Beckenham Service Centre, 66 Colombo Street
Wednesday 31 March 2021	5.30pm	Boardroom, Beckenham Service Centre, 66 Colombo Street
Wednesday 14 April 2021	8am	Boardroom, Beckenham Service Centre, 66 Colombo Street
Wednesday 5 May 2021	8am	Boardroom, Beckenham Service Centre, 66 Colombo Street
Wednesday 19 May 2021	8am	Boardroom, Beckenham Service Centre, 66 Colombo Street
Wednesday 2 June 2021	5.30pm	Boardroom, Beckenham Service Centre, 66 Colombo Street
Wednesday 16 June 2021	8am	Boardroom, Beckenham Service Centre, 66 Colombo Street
Wednesday 30 June 2021	5.30pm	Boardroom, Beckenham Service Centre, 66 Colombo Street
Wednesday 14 July 2021	8am	Boardroom, Beckenham Service Centre, 66 Colombo Street
Wednesday 4 August 2021	5.30pm	Boardroom, Beckenham Service Centre, 66 Colombo Street
Wednesday 18 August 2021	8am	Boardroom, Beckenham Service Centre, 66 Colombo Street

Wednesday 1 September 2021	5.30pm	Boardroom, Beckenham Service Centre, 66 Colombo Street
Wednesday 15 September 2021	8am	Boardroom, Beckenham Service Centre, 66 Colombo Street
Wednesday 6 October 2021	5.30pm	Boardroom, Beckenham Service Centre, 66 Colombo Street
Wednesday 20 October 2021	8am	Boardroom, Beckenham Service Centre, 66 Colombo Street
Wednesday 3 November 2021	5.30pm	Boardroom, Beckenham Service Centre, 66 Colombo Street
Wednesday 17 November 2021	8am	Boardroom, Beckenham Service Centre, 66 Colombo Street
Wednesday 1 December 2021	5.30pm	Boardroom, Beckenham Service Centre, 66 Colombo Street

- c. Note that briefings will be held on the Monday or Tuesday of the week of ordinary meetings.
2. Delegate the power to amend the ordinary meeting schedule for 2021 to the Community Governance Manager and Community Board Chairperson, as required.

Community Board Resolved SCCB/2020/00098

Part C

That the Waihoru/Spreydon-Cashmere Community Board:

1. Adopt the following as its schedule for ordinary meetings in February 2021:
 - a. Tuesday 2 February 2021 at 5pm
 - b. Wednesday 17 February 2021 at 8am
2. Delegate the power to amend the ordinary meeting schedule for February 2021 to the Community Governance Manager and Community Board Chairperson, as required.
3. Note that the Board will consider a report recommending its schedule for ordinary meetings for the remainder of 2021 in February 2021.
4. Note that briefings will be held on Monday, 8 February 2021 at 3pm and Monday, 22 February 2021 at 3pm. The Board will consider its briefing schedule for the remainder of 2021 in February 2021.

Keir Leslie/Callum Stewart-Ward

Carried

12. Waihoru/Spreydon-Cashmere Community Board Area Report - December 2020

Community Board Resolved SCCB/2020/00099 (Original staff recommendation accepted without change.)

Part B

That the Waihoru/Spreydon-Cashmere Community Board:

1. Receive the Waihoru/Spreydon-Cashmere Community Board Area Report for December 2020.

Melanie Coker/Callum Stewart-Ward

Carried

13. Elected Members' Information Exchange / Te Whakawhiti Whakaaro o Te Kāhui Amorangi

Part B

Board members shared the following information:

- A Board member acknowledged the success of the Board's Community Service Awards and End of Year Function on 3 December 2020.
- A Board member attended the Spreydon Neighbourhood Network's recent Christmas Twilight Market.
- A Board member noted that the revised Facilities Network Plan incorporated key aspects of the Board's feedback.
- The Board recently presented its submission on the Council's Draft Community Housing Strategy at a hearing.
- The Council's Accessibility Working Group will have a site visit at Ngā Puna Wai.
- The Council's Urban Development and Transport Committee will consider requesting that staff investigate whether the high kerb along Domain Terrace is accessible.
- A Board member recently attended a meeting of the Addington Neighbourhood Association.
- A Board member recently attended the Beckenham Neighbourhood Association's BBQ, which was well-attended.
- A Board member noted that a resident is concerned with the safety of the St Martins / Centaurus Roads roundabout for pedestrians. At a previous meeting, the Board requested that staff investigate this issue.

Karakia Whakamutunga: Karolin Potter

Meeting concluded at 10.27am.

CONFIRMED THIS 2nd DAY OF FEBRUARY 2021

KAROLIN POTTER
CHAIRPERSON

Unconfirmed

Item 3 - Minutes of Previous Meeting 15/12/2020

7. Cashmere View Playground - Basketball Court Request

Reference / Te Tohutoro: 20/1471220

Report of / Te Pou
Matua: Megan Carpenter, Parks Recreation Planner,
megan.carpenter@ccc.govt.nz

General Manager /
Pouwhakarae: Mary Richardson, General Manager Citizens and Community

1. Brief Summary

- 1.1 The purpose of this report is to provide information to the Waihoru/Spreydon-Cashmere Community Board following a request from the Community to install a basketball court and hoop at Cashmere View Playground, 42 Cashmere View Street, Spreydon.
- 1.2 At the Waihoru/Spreydon-Cashmere Community Board meeting on 1 September 2020 the Board decided to:
 - Receive the information in the correspondence report dated 1 September 2020 and to refer the request raised in the correspondence for a half basketball court at Fairview Street Park to staff for advice.
- 1.3 Refer to **attachment A** for information that was included in the deputation.

2. Officer Recommendations / Ngā Tūtohu

That the Waihoru/Spreydon-Cashmere Community Board:

1. Receive the information in the Cashmere View Playground – Basketball Court Request report.

3. Key Points

- 3.1 Cashmere View Reserve is located at 42 Cashmere View Street, Spreydon. The playground is a local neighbourhood reserve that includes a playground with a swing set (strap seat and toddler seat), a maypole, a see-saw and a small modular structure that includes a slide, fireman's pole and a cliff hanger (similar to monkey bars). The park also has a pathway that is suitable for learning to ride bikes and scooters and some open space for ball games.
- 3.2 New basketball courts need to be located a suitable distance away from residential dwellings to ensure that the noise generated from playing basketball complies with the noise standards of the Christchurch District Plan. Noise testing of an existing basketball court has indicated 30m is a suitable separation distance. The recommended separation distance cannot be achieved at Cashmere View Reserve.
- 3.3 Larger parks are better suited to having activities that generate noise and possible parks nearby that may be suitable for a half basketball court include Barrington Park, Somerfield Park (assuming there is suitable separation from Spreydon Cemetery) and Centennial Park. There are two existing tennis courts at Centennial Park which are directly beside a basketball court at Te Kura Kaupapa Māori o Te Whānau Tahi which the community can use outside school hours.
- 3.4 Nearby Council provision of basketball courts

- 3.4.1 Francis Reserve, 7 Penruddock Rise, Westmorland, has a half basketball court and is approximately two kilometres away (This court is in the Halswell-Hornby-Riccarton Community Board area).
- 3.4.2 Holliss Reserve, 21 Holliss Avenue has a half basketball court and is approximately two kilometres away.
- 3.4.3 Hoon Hay Park, 61 Mathers Road has a full basketball court and is approximately 3.2 kilometres away.
- 3.5 In 2019/2020 Council staff asked schools in Christchurch whether they allow the public to access their school after hours to use play equipment and recreation facilities such as basketball courts. The following schools are open outside of school hours and have a basketball court or hard court surface.
 - 3.5.1 Te Kura Kaupapa Māori o Te Whānau Tahī, 83 Lyttelton Street, Spreydon has a full basketball court that is located directly beside the tennis courts at Centennial Park.
 - 3.5.2 Somerfield Te Kura Wairepo School, 42 Studholme Street, Somerfield has a half basketball court.
 - 3.5.3 Te Kura o Huriawa Thorrington School, 22a Colombo Street Cashmere has courts but not for basketball
 - 3.5.4 Te Ara Koropiko West Spreydon School, 147 Lyttelton Street, Spreydon has courts, but not for basketball.
 - 3.5.5 Hoon Hay School/ Te Kura Kōaka, has a full basketball court.
 - 3.5.6 Cashmere Primary School Te Pae Kereru, has a full basketball court.

4. Financial Implications

- 4.1 Budget Code: The Council has no funding available within its current 2018 - 2028 long term plan to develop a new half basketball court in the Cashmere area.
- 4.2 The approximate cost to develop a half basketball court is \$45,000.

5. Community Interest and Consultation

- 5.1 The request from the resident mentions that they have spoken to a number of families in the area and all were extremely positive with supporting the installation of basketball keyhole and hoop at Cashmere View Playground. They also mention that they have seen many young people in the area with basketballs who are out on the footpaths dribbling and pretending to shoot hoops.

Attachments / Ngā Tāpirihanga

No.	Title	Page
A ↓	Deputation - Agenda of Waihoru/Spreydon-Cashmere Community Board - 1 September 2020 p.11-12	18

In addition to the attached documents, the following background information is available:

Document Name	Location / File Link
<enter document name>	<enter location/hyperlink>

Confirmation of Statutory Compliance / Te Whakatūtutanga ā-Ture

Compliance with Statutory Decision-making Requirements (ss 76 - 81 Local Government Act 2002).

(a) This report contains:

- (i) sufficient information about all reasonably practicable options identified and assessed in terms of their advantages and disadvantages; and
- (ii) adequate consideration of the views and preferences of affected and interested persons bearing in mind any proposed or previous community engagement.

(b) The information reflects the level of significance of the matters covered by the report, as determined in accordance with the Council's significance and engagement policy.

Signatories / Ngā Kaiwaitohu

Author	Megan Carpenter - Planner Recreation
Approved By	Kelly Hansen - Manager Parks Planning & Asset Management Al Hardy - Manager Community Parks Andrew Rutledge - Head of Parks Mary Richardson - General Manager Citizens & Community

Waihoru/Spreydon-Cashmere Community Board
01 September 2020



7. Correspondence

Reference / Te Tohutoro: 20/1021477

Report of / Te Pou
Matua:

Amy Hart, Community Board Advisor, amy.hart@ccc.govt.nz

General Manager /
Pouwhakarae:

Mary Richardson, General Manager Customer and Community,
mary.richardson@ccc.govt.nz

1. Purpose of Report / Te Pūtake Pūrongo

Correspondence has been received from:

Name	Subject
Brian Rattray, resident	Basketball at Fairview Street Park

2. Officer Recommendations / Ngā Tūtohu

That the Spreydon-Cashmere Community Board:

1. Receive the information in the correspondence report dated 01 September 2020.

Attachments / Ngā Tāpirihanga

No.	Title	Page
A ↓	Basketball at Fairview Street Park	12

Item 7
Item 7
Attachment A

Attn Amy Hart.

My name is Brian Rattray and reside in Fairview Street where my family has lived since 1940.
Firstly, my congratulations to everyone, particularly the committee who has made such a delightful area of the Fairview Street Park.
I grew up there with a multitude of kids from the surrounding areas.
Some of the activities we immersed ourselves in over the years included: Soccer, make shift rugby, kite flying, cycle speedway, cricket, softball[rounders] and fireworks.
Sometimes there would be up to 20 of us at any one time.
BUT, Today, there is a small childrens area and -----?
Now it appears to be either a walk through for most people or a seat for the elderly.
I believe this area is grossly under utilised. The majority of times in afternoons and weekends when I pass the park or walk through, it is devoid of children.
We knew it as a play park for all children.
Within "playing" proximity are; A High School of 2000 students,
An Intermediate School, and 5 Primary Schools, with the majority of these children not catered for in this area for Play, Fun, and Enjoyment.
PROPOSAL.
That a Basketball Keyhole and Backboard be installed .
I have discussed this with a number of families in the area and all were extremely positive.
There are many young, and not so young, people in the area who I believe would use this facility.
Basketball is now the fastest growing sport in New Zealand.
Having seen how many young people in this area who have basketballs and are out on the footpaths dribbling and pretend shooting I am certain this facility would be well used and continue why this area was originally developed.
I sincerely hope you will give this proposal your full consideration and see it through the eyes of our young people.
I am available to speak to the committee if they so wish.
Thank you for your time, and enthusiasm for this delightful area.
Brian Rattray JP.
HOD Physical Education Cashmere High School, 1975-----2000.

B R Rattray 6/7/2019
32 Fairview Street
3320640.

8. Waihoru/Spreydon-Cashmere 2020-21 Discretionary Response Fund Report Needs Analysis/Feasibility Adults Playground

Reference / Te Tohutoro: 20/1541892

Report of / Te Pou

Emma Pavey, emma.pavey@ccc.govt.nz

Matua:

General Manager /

Pouwhakarae:

Mary Richardson, GM Citizens & Community

1. Purpose of Report / Te Pūtake Pūrongo

- 1.1 The purpose of this report is for the Waihoru/Spreydon-Cashmere Community Board to consider an application for funding from its 2020-21 Discretionary Response Fund from the organisation(s) listed below.

Funding Request Number	Organisation	Project Name	Amount Requested	Amount Recommended
#62208	Waihoru/Spreydon-Cashmere Community Board	Needs Analysis/Feasibility for the Adults Playground	\$5,000	\$5,000

- 1.2 There is currently a balance of \$117,109 remaining in the fund

2. Officer Recommendations / Ngā Tūtohu

That the Waihoru/Spreydon-Cashmere Community Board:

- Approves a grant of \$5,000 from its 2020-21 Discretionary Response Fund towards the Needs Analysis/Feasibility for the Adults Playground project.

3. Key Points / Ngā Take Matua

Strategic Alignment / Te Rautaki Tīaroaro

- 3.1 The recommendation is strongly aligned to the Strategic Framework and in particular the strategic priority of resilient communities. It will provide a strong sense of community.
- 3.2 Decision Making Authority / Te Mana Whakatau
- 3.3 The Community Board has the delegated authority to determine the allocation of the Discretionary Response Fund for each community
- 3.3.1 Allocations must be consistent with any policies, standards or criteria adopted by the Council
- 3.3.2 The Fund does not cover:
- Legal challenges or Environment Court challenges against the Council, Council Controlled organisations or Community Board decisions
 - Projects or initiatives that change the scope of a Council project or that will lead to ongoing operational costs to the Council (though Community Boards can recommend to the Council that it consider a grant for this purpose).

Assessment of Significance and Engagement / Te Aromatawai Whakahirahira

- 3.4 The decisions in this report are of low significance in relation to the Christchurch City Council's Significance and Engagement Policy.
- 3.5 The level of significance was determined by the number of people affected and/or with an interest.
- 3.6 Due to the assessment of low significance, no further community engagement and consultation is required.

Discussion / Kōrerorero

- 3.7 At the time of writing, the balance of the 2020-21 Discretionary Response Fund is as below.

Total Budget 2020/21	Granted To Date	Available for allocation	Balance If Staff Recommendation adopted
\$172,609	\$55,500	\$117,109	\$112,109

- 3.8 Based on the current Discretionary Response Fund criteria, the applications listed above are eligible for funding.
- 3.9 The attached Decision Matrix provides detailed information for the applications. This includes organisational details, project details, financial information and a staff assessment.

Attachments / Ngā Tāpirihanga

No.	Title	Page
A ↓	Waihoru/Spreydon-Cashmere 2020-21 Discretionary Response Fund Decision Needs Analysis/Feasibility Matrix Adults Playground	23

Confirmation of Statutory Compliance / Te Whakatūtutanga ā-Ture

Compliance with Statutory Decision-making Requirements (ss 76 - 81 Local Government Act 2002).

(a) This report contains:

- (i) sufficient information about all reasonably practicable options identified and assessed in terms of their advantages and disadvantages; and
- (ii) adequate consideration of the views and preferences of affected and interested persons bearing in mind any proposed or previous community engagement.

(b) The information reflects the level of significance of the matters covered by the report, as determined in accordance with the Council's significance and engagement policy.

Signatories / Ngā Kaiwaitohu

Author	Emma Pavey - Community Recreation Advisor
Approved By	Jo Wells - Manager Community Governance, Spreydon-Cashmere

2020/21 DRF SPREYDON-CASHMERE DECISION MATRIX

Priority Rating

One	Meets all eligibility criteria and contributes significantly to Funding Outcomes and Priorities. Highly recommended for funding.
Two	Meets all eligibility criteria and contributes to Funding Outcomes and Priorities. Recommended for funding.
Three	Meets all eligibility criteria and contributes to Funding Outcomes and Priorities but to a lesser extent than Priority 2 applications. Not recommended for funding.
Four	Meets all eligibility criteria and has minimum contribution to Funding Outcomes and Priorities / Insufficient information provided by applicant (in application and after request from Advisor) / Other funding sources more appropriate. Not recommended for funding.

00062208	Organisation Name	Name and Description	Total Cost	Contribution Sought Towards	Staff Recommendation	Priority
	Spreydon-Cashmere Community Board	Needs Analysis/ Feasibility Adult Playground This project is to provide a Needs Analysis/Feasibility for the provision of an Adult Playground in the Waihoru/Spreydon-Cashmere ward.	\$ 5,000 Requested \$ 5,000 (100% requested)	Needs Analysis/ Feasibility - \$5,000	\$ 5,000 That the Waihoru/Spreydon-Cashmere Community Board makes a grant of \$5,000 from its 2020-21 Discretionary Response Fund towards the Needs Analysis/Feasibility for the Adult Playground.	2

Organisation Details

Service Base: 66 Colombo Street
 Legal Status: N/A
 Established: N/A
 Target Groups: Adults, Older Adults
 Annual Volunteer Hours: N/A
 Participants: N/A

Alignment with Council Strategies

- Physical Recreation and Sport Strategy
- Strengthening Communities Strategy
- Community Board Plan

CCC Funding History

Nil for this project.

Other Sources of Funding

Nil

Staff Assessment

The Waihoru/Spreydon-Cashmere Community Board has six priority projects as part of the 2020-22 Community Board Plan. One of the priority projects is to explore the provision of an adult playground in the Spreydon-Cashmere area.

To help identify the potential for an adult playground a Needs Analysis/Feasibility is required to identify if there is a need for the adult playground, and if there is, identify potential sites that this can be installed.

The Community Board has stated in their Board Plan that this project is significant as it is important that the needs of those suffering from loneliness or social isolation are recognised and addressed by providing creative spaces for community interaction.

The requested amount for the project is the maximum amount and any unspent funds will be returned to the Discretionary Response Fund.

9. Cashmere / Worsley / Hoon Hay Road - Intersection Upgrade

Reference / Te Tohutoro: 20/1242366

Report of / Te Pou
Matua:

Pana Togiasso, Project Manager, pana.togiasso@ccc.govt.nz

General Manager /
Pouwhakarae:

David Adamson, General Manager City Services

1. Purpose of the Report / Te Pūtake Pūrongo

- 1.1 The purpose of this report is to seek support for the recommendation to Council to remove zebra crossing road markings from the design and to approve a change in tree species from Cherry Blossoms Yoshino Cherry (*Prunus yedoensis*) to native Black Beech trees (*Fuscospora solandri*).
- 1.2 This change is a result of the road safety audit and as per the community board meeting 7th November 2017 the “[board discussed also the species of trees be planted as part of the proposals and expressed a preference for native specials to be used](#)”.

2. Precursor

- 2.1 The project was approved to proceed to detailed design and construction by the Spreydon-Cashmere Community Board in November 2017 and by the Council in December 2017. The report to Council (with the Spreydon-Cashmere Community Board recommendation) and the Council decision are available online via the link as follows: <https://ccc.govt.nz/the-council/consultations-and-submissions/haveyoursay/show/52>.
- 2.2 Detailed design for the project has now been completed, including completion of a pre-construction road safety audit by an independent safety audit team. There are two required changes from the consultation plan (and that ultimately require approval by the Spreydon Cashmere Community Board and Council):
 - 2.2.1 The species of the replacement trees is proposed to change from cherry blossoms to black beech. This change was prompted by the community, who requested native planting as reflected in paragraph 55 of the Spreydon-Cashmere Community Board resolution SCCB/2017/00164. The final planting plan is attached in **Appendix A**.
 - 2.2.2 In response to safety issues raised in road safety audit, the marked pedestrian zebra crossings over the slip lanes is recommended to be removed. This changes to address issues with advance visibility, and because associated regulatory line markings (limit lines and advance warning diamonds) could not be accommodated due to the geometry of the intersection. The final road marking plan is attached in **Appendix B**.
- 2.3 The first of the two resolutions that require attention in this report is the tree planting at the intersection as per paragraph 55 of the Spreydon Cashmere Community Board resolution SCCB/2017/00164 from its meeting of 7 November 2017 as below;

SCCB/2017/00164

That the Spreydon-Cashmere Community Board:

55. *Requests that any trees planted as part of the intersection improvements, including replacements for those removed, be suitable native species.*

- 2.4 The second of the two resolutions that require attention in this report is the matter of the planting plan, and the pedestrian crossings, are paragraphs 15, 16 and 18 of Council resolution CNCL/2017/00340 from its meeting of 7 December 2017 as below;

CNCL/2017/00340

That the Council:

15. *Approves that a pedestrian crossing be duly established and marked in accordance with section 8.2 of the Land Transport Rule: Traffic Control Devices 2004, on the Cashmere Road west approach left turn slip lane at its intersection with Hoon Hay Road, as detailed on Attachment A. (Note 2 Applies)*
 16. *Approves that a pedestrian crossing be duly established and marked in accordance with section 8.2 of the Land Transport Rule: Traffic Control Devices 2004, on the Cashmere Road west approach left turn slip lane at its intersection with Hoon Hay Road, as detailed on Attachment A. (Note 2 Applies).*
 18. *Approves the lane marking changes, kerb alignment changes and road surface changes, at the Cashmere Road / Hoon Hay Road / Worsleys Road intersection, as detailed in Attachment A. (Note 2 Applies). Waka Kotahi / NZ Transport Agency subsidy for this project has been approved.*
- 2.5 This project is now being progressed to tender and construction.
- 2.6 The successful contract is anticipated to be awarded by mid to late February 2021, and construction is expected to be completed in the first half of 2021.

3. Officer Recommendations / Ngā Tūtohu

That the Waihoru/Spreydon-Cashmere Community Board recommend that Council:

1. Approves the change in respect of the tree planting species and removal of marked pedestrian zebra crossings for the Cashmere / Worsley / Hoon Hay Road - Intersection Upgrade project, in accordance with the final planting plan (**Attachment A**) and final road marking plan (**Attachment B**).
2. Pursuant to Clause 19.6 of the Christchurch City Council Standing Order, revokes paragraphs 15 and 16 of Resolution **CNCL/2017/00340** as below;
 15. *Approves that a pedestrian crossing be duly established and marked in accordance with section 8.2 of the Land Transport Rule: Traffic Control Devices 2004, on the Cashmere Road west approach left turn slip lane at its intersection with Hoon Hay Road, as detailed on Attachment A. (Note 2 Applies)*
 16. *Approves that a pedestrian crossing be duly established and marked in accordance with section 8.2 of the Land Transport Rule: Traffic Control Devices 2004, on the Cashmere Road west approach left turn slip lane at its intersection with Hoon Hay Road, as detailed on Attachment A. (Note 2 Applies).*

4. Reason for Report Recommendations / Ngā Take mō te Whakatau

- 4.1 The staff recommendations in this report are to respond to community requests for native tree species to be accommodated in the new intersection layout, and also to address safety issues raised in the detailed design road safety audit related to the previously approved marked pedestrian zebra crossings.

- 4.2 The identified safety issue with having marked pedestrian zebra crossings on the raised platforms in the left turn slip lanes (on the east and west Cashmere Road approaches), is that the geometry of the intersection results in restricted advance visibility of the crossing locations. Required regulatory markings (limit line and advance warning diamonds) also cannot be accommodated clear of the adjacent traffic lanes. This means that pedestrians may step out onto the crossing without checking appropriately for oncoming traffic, while approaching drivers may not see the pedestrian and/or be aware of the presence of the pedestrian crossing in the first instance.

5. Alternative Options Considered / Ētahi atu Kōwhiringa

- 5.1 Do nothing – retain and implement the previously approved design, with non-native tree species and marked zebra crossings on the left turn slip lane raised platforms.
- 5.1.1 Advantages – some members of the community may prefer the Cherry Blossoms Yoshino Cherry (*Prunus yedoensis*) tree species
- 5.1.2 Disadvantages – does not respond to community requests for the inclusion of native tree species in the design, and would result in unsafe pedestrian crossings that would also be non-compliant with regulations and design standards without the required road markings (limit lines and advance warning diamonds).

6. Detail / Te Whakamahuki

- 6.1 In order to respond to community requests for the inclusion of native tree species in the design, and also to address safety issues identified in the independent road safety audit regarding the marked pedestrian zebra crossings on the left turn slip lane platforms, staff are seeking the support of the Cashmere-Spreydon Community Board to recommend that Council approve a change in scope for the project.
- 6.2 The staff recommendation to include native tree species in the design responds to community requests on this matter, therefore no further engagement / consultation is undertaken.
- 6.3 The staff recommendation to remove the marked pedestrian zebra crossings from the left turn slip lane raised platforms is to address a safety issue identified in the independent road safety audit. The remainder of the previously approved intersection design will stay the same including, of most importance, the retention of the raised platforms in the left turn slip lanes on the east and west Cashmere Road approaches. For this reason, staff considered that no further engagement / consultation was required on this matter.
- 6.4 The decision affects the following wards/Community Board areas:
- 6.4.1 Cashmere-Spreydon Community Board

7. Policy Framework Implications / Ngā Hīraunga ā- Kaupapa here

Strategic Alignment / Te Rautaki Tīaroaro

- 7.1 This report supports the [Council's Long Term Plan \(2018 - 2028\)](#):
- 7.1.1 Activity: Traffic Safety and Efficiency
- Level of Service: 10.0.6.1 Reduce the number of crashes on the road network. - <=119 (reduce by 5 or more per year)

Policy Consistency / Te Whai Kaupapa here

- 7.2 The decision is consistent with Council's Plans and Policies.

Impact on Mana Whenua / Ngā Whai Take Mana Whenua

- 7.3 The decision does not involve a significant decision in relation to ancestral land or a body of water or other elements of intrinsic value, therefore this decision does not specifically impact Mana Whenua, their culture and traditions.

Climate Change Impact Considerations / Ngā Whai Whakaaro mā te Āhuarangi

- 7.4 It will contribute to the cumulative citywide cycle improvements and compliment the Major Cycle Routes (MCR) program. Aiming to provide improved options to motorised vehicle travel.

Accessibility Considerations / Ngā Whai Whakaaro mā te Hunga Hauā

- 7.5 Although the recommendations in this report include the removal of marked pedestrian zebra crossings, which would have given pedestrians priority over on-road traffic turning left from Cashmere Road to Hoon Hay Road and Worsleys Road, restricted visibility and inability to accommodate associated road markings means that operation of the pedestrian crossing would be unsafe.
- 7.6 Retention of the raised platforms will still provide convenient and accessible crossing locations over the left turn slip lanes, albeit with the requirement that pedestrians do not have priority and therefore have to check more carefully for approaching traffic. It is considered that the physical attributes of the platforms themselves will moderate traffic speeds more so than the presence of a priority pedestrian crossing anyway.

8. Resource Implications / Ngā Hīraunga Rauemi

Capex/Opex / Ngā Utu Whakahaere

- 8.1 Cost to Implement – The requested changes does not have any additional cost to the project
- 8.2 Maintenance/Ongoing costs – There will be a minor reduction in operational costs due to not having to maintain the pedestrian crossing markings
- 8.3 Funding Source – Capital Programme; CPMS ID#1346, Intersection Improvement: Cashmere / Hoon Hay/ Worsleys, Financial Year 2021

9. Legal Implications / Ngā Hīraunga ā-Ture

Statutory power to undertake proposals in the report / Te Manatū Whakahaere Kaupapa

- 9.1 Clause 30(6) of Schedule 7 of the Local Government Act 2002 and Clause 19.6 of the Christchurch City Council Standing Orders.

Other Legal Implications / Ētahi atu Hīraunga-ā-Ture

- 9.2 The Standing Orders contain rules for the conduct and proceedings of local authorities, committees, subcommittees and community boards, including the revocation or alteration of resolutions. All members of a local authority must abide by the Standing Orders.
- 9.3 Under Clause 9.2 of the Standing Orders any revocation must be made by the body responsible for the decision. Clause 19.6 of the Standing Orders provides:

19.6 Revocation or alteration by recommendation in report

The Council, on a recommendation in a report by the chairperson, chief executive, or any committee or community board, may revoke or alter all or part of a resolution passed by a previous meeting. The chief executive must give at least 2 clear working days' notice of any

meeting that will consider a revocation or alteration recommendation, with details of the proposal to be considered

10. Risk Management Implications / Ngā Hiraunga Tūraru

- 10.1 The risk of associated with non-approval of this report is that the pedestrian crossing will have to be marked and due to the lack of visibility of the crossing to approaching vehicles it may result in a pedestrian/vehicle crash.

Attachments / Ngā Tāpirihanga

No.	Title	Page
A ↓	Final Planting Plan	30
B ↓	Final Road Marking Plan	32

In addition to the attached documents, the following background information is available:

Document Name	Location / File Link
<enter document name>	<enter location/hyperlink>

Confirmation of Statutory Compliance / Te Whakatūtutanga ā-Ture

Compliance with Statutory Decision-making Requirements (ss 76 - 81 Local Government Act 2002).

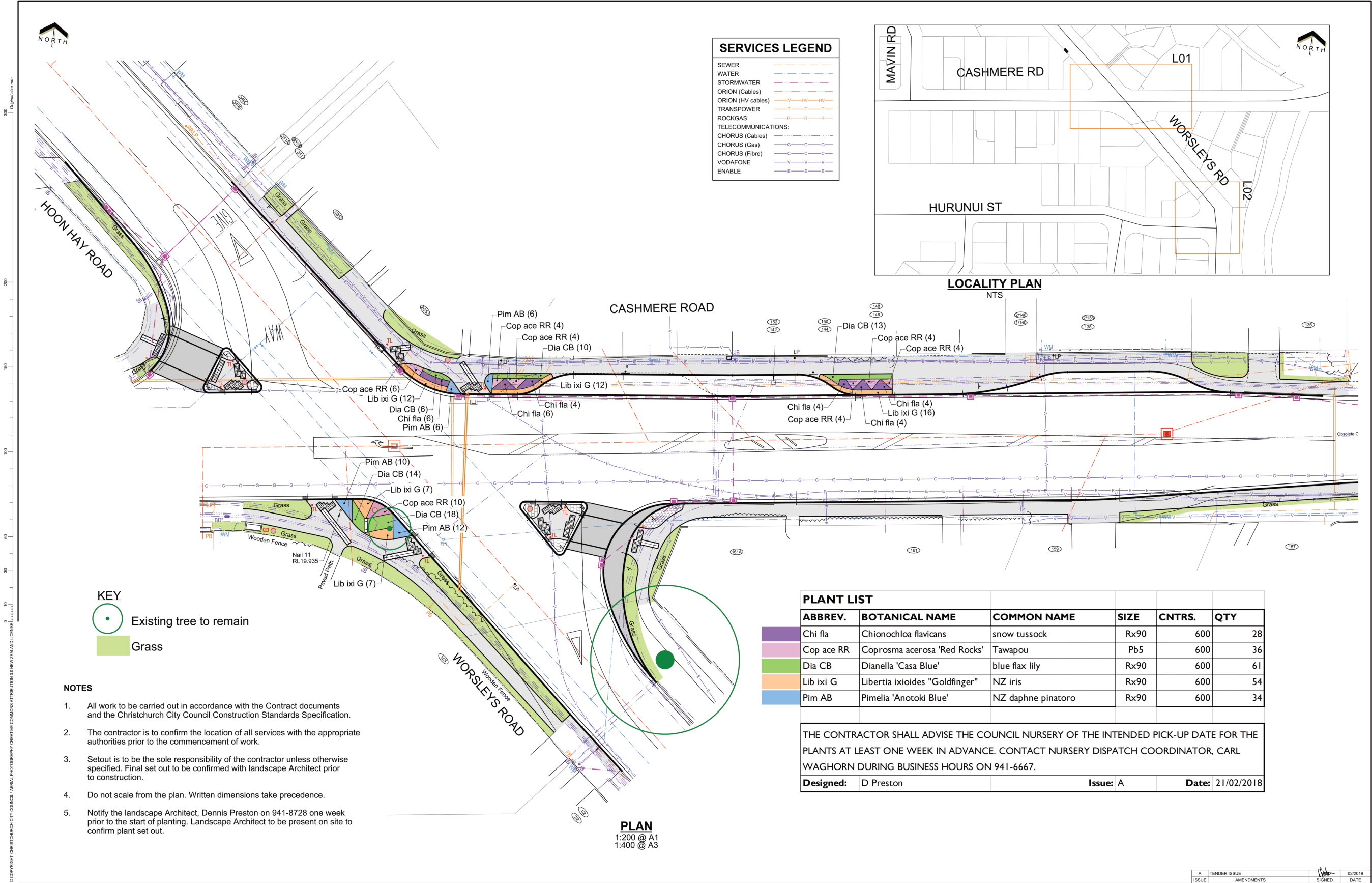
(a) This report contains:

- (i) sufficient information about all reasonably practicable options identified and assessed in terms of their advantages and disadvantages; and
- (ii) adequate consideration of the views and preferences of affected and interested persons bearing in mind any proposed or previous community engagement.

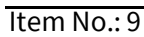
(b) The information reflects the level of significance of the matters covered by the report, as determined in accordance with the Council's significance and engagement policy.

Signatories / Ngā Kaiwaitohu

Author	Pana Tогiaso - Project Manager
Approved By	Lynette Ellis - Manager Planning and Delivery Transport Richard Osborne - Head of Transport David Adamson - General Manager City Services







10. Proposed New Mountain Bike Track in Montgomery Spur Reserve

Reference / Te Tohutoro: 21/31317

Report of / Te Pou

Matua:

Amy Hart, Community Board Advisor

General Manager /

Pouwhakarae:

Mary Richardson, General Manager Citizens and Community

1. Purpose of the Report / Te Pūtake Pūrongo

- 1.1 The purpose of this report is for the Board to decide whether it wishes to make a submission on the Council's proposed new mountain bike track in Montgomery Spur Reserve. This is a staff generated report.
- 1.2 The decision in this report is of low significance in relation to the Christchurch City Council's Significance and Engagement Policy. While the new mountain bike track may be used by a wide range of residents, the Council is the final decision-maker and the Board is simply considering whether to provide a submission.

2. Officer Recommendations / Ngā Tūtohu

That the Waihoru/Spreydon-Cashmere Community Board:

1. Receive the information in the Proposed New Mountain Bike Track in Montgomery Spur Reserve report.
2. Decide whether to provide a submission on the Council's proposed new mountain bike track in Montgomery Spur Reserve.

3. Reason for Report Recommendations / Ngā Take mō te Whakatau

- 3.1 The reason for the report recommendations is that Montgomery Spur Reserve borders the Board's area.

4. Alternative Options Considered / Ētahi atu Kōwhiringa

- 4.1 An alternative option is for the Board not to provide a submission.
- 4.2 The advantage of this option is that it would require less Board and staff time.
- 4.3 The disadvantage of this option is that the Board would not have an opportunity to provide feedback on a proposal that affects local communities.

5. Detail / Te Whakamahuki

- 5.1 The Council has been working with mountain bike groups to add to the existing tracks in Montgomery Spur Reserve. The Council also wants to improve safety for everyone, and the new mountain bike track will help separate walkers and runners from mountain bikers across the area, especially on the nearby Rapaki Track.
- 5.2 If approved, the Council will build the new mountain bike track at the same time as the Kowhai Walking Track, which has already been approved.

- 5.3 Consultation is open until 5 March 2021. A Hearings Panel will then consider submissions and make a recommendation to the Council in March/April 2021. The Council will make a decision in April/June 2021.
- 5.4 Board members were briefed on the proposed new mountain bike track in October 2020.
- 5.5 Please refer to the Council's [Have Your Say](#) website for more details.
- 5.6 The decision affects the following wards/Community Board areas:
 - 5.6.1 The decision on whether to make a submission affects the Spreydon-Cashmere Community Board area.

6. Policy Framework Implications / Ngā Hīraunga ā- Kaupapa here

Strategic Alignment / Te Rautaki Tīaroaro

- 6.1 This report supports the following items in the Council's Strategic Framework:
 - 6.1.1 Principle: Being open, transparent and democratically accountable.
 - 6.1.2 Strategic Priority: Enabling active and connected communities to own their future.
- 6.2 This report supports the [Council's Long Term Plan \(2018 - 2028\)](#):
 - 6.2.1 Activity: Governance and Decision-Making. Level of Service: 4.1.18 Participation in and contribution to Council decision-making.

Policy Consistency / Te Whai Kaupapa here

- 6.3 The decision is consistent with Council's Plans and Policies.

Impact on Mana Whenua / Ngā Whai Take Mana Whenua

- 6.4 The decision to make a submission does not involve a significant decision in relation to ancestral land or a body of water or other elements of intrinsic value, therefore this decision does not specifically impact Mana Whenua, their culture and traditions.

Climate Change Impact Considerations / Ngā Whai Whakaaro mā te Āhuarangi

- 6.5 The proposed new mountain bike track does not include climate change impact considerations.

Accessibility Considerations / Ngā Whai Whakaaro mā te Hunga Hauā

- 6.6 The proposed new mountain bike track does not include accessibility considerations.

7. Resource Implications / Ngā Hīraunga Rauemi

Capex/Opex / Ngā Utu Whakahaere

- 7.1 Cost to Implement – Staff time.
- 7.2 Maintenance/Ongoing costs – Nil.
- 7.3 Funding Source – Community Governance Team operational budget.

Other / He mea anō

- 7.4 Not applicable.

8. Legal Implications / Ngā Hīraunga ā-Ture

Statutory power to undertake proposals in the report / Te Manatū Whakahaere Kaupapa

- 8.1 The Board has the delegation to decide whether it would like to make submissions on Council proposals.

Other Legal Implications / Ētahi atu Hīraunga-ā-Ture

- 8.1 There is no legal context, issue or implication relevant to this decision.
- 8.2 This report not been reviewed and approved by the Legal Services Unit.

9. Risk Management Implications / Ngā Hīraunga Tūraru

- 9.1 If the Board does not provide a submission on the proposed new mountain bike track, there is a risk that the Board would have missed an opportunity to influence a proposal that affects local communities.
- 9.2 This risk would be eliminated if the Board decided to provide a submission on this matter.

Attachments / Ngā Tāpirihanga

There are no attachments for this report.

In addition to the attached documents, the following background information is available:

Document Name	Location / File Link
Not applicable	Not applicable

Confirmation of Statutory Compliance / Te Whakatūtutanga ā-Ture

Compliance with Statutory Decision-making Requirements (ss 76 - 81 Local Government Act 2002).

(a) This report contains:

- (i) sufficient information about all reasonably practicable options identified and assessed in terms of their advantages and disadvantages; and
- (ii) adequate consideration of the views and preferences of affected and interested persons bearing in mind any proposed or previous community engagement.

(b) The information reflects the level of significance of the matters covered by the report, as determined in accordance with the Council's significance and engagement policy.

Signatories / Ngā Kaiwaitohu

Author	Amy Hart - Community Board Advisor
Approved By	Jo Wells - Manager Community Governance, Spreydon-Cashmere

11. Waihoru/Spreydon-Cashmere Community Board Meeting Schedule 2021

Reference / Te Tohutoro: 21/33365

Report of / Te Pou
Matua: Amy Hart, Community Board Advisor, amy.hart@ccc.govt.nz

General Manager /
Pouwhakarae: Mary Richardson, General Manager Citizens and Community,
mary.richardson@ccc.govt.nz

1. Purpose of the Report / Te Pūtake Pūrongo

- 1.1 At its 15 December 2020 meeting, the Waihoru/Spreydon-Cashmere Community Board adopted the following for its schedule for ordinary meetings in February 2021:
 - 1.1.1 Tuesday 2 February 2021 at 5pm
 - 1.1.2 Wednesday 17 February 2021 at 8am.
- 1.2 The purpose of this report is for the Waihoru/Spreydon-Cashmere Community Board to approve its ordinary meetings arrangements for the period 1 March to 31 December 2021.
- 1.3 The Board requested to review these arrangements in July 2021.
- 1.4 The decision/s in this report are of low significance in relation to the Christchurch City Council's Significance and Engagement Policy.

2. Officer Recommendations / Ngā Tūtohu

That the Waihoru/Spreydon-Cashmere Community Board:

1. Adopt the following as its schedule for ordinary meetings for the period 1 March to 31 December 2021:

Date	Time	Location
Tuesday 2 March 2021	5pm	Boardroom, Beckenham Service Centre, 66 Colombo Street
Wednesday 17 March 2021	8am	Boardroom, Beckenham Service Centre, 66 Colombo Street
Tuesday 30 March 2021	5pm	Boardroom, Beckenham Service Centre, 66 Colombo Street
Wednesday 14 April 2021	8am	Boardroom, Beckenham Service Centre, 66 Colombo Street
Tuesday 4 May 2021	5pm	Boardroom, Beckenham Service Centre, 66 Colombo Street
Wednesday 19 May 2021	8am	Boardroom, Beckenham Service Centre, 66 Colombo Street
Tuesday 1 June 2021	5pm	Boardroom, Beckenham Service Centre, 66 Colombo Street
Wednesday 16 June 2021	8am	Boardroom, Beckenham Service Centre, 66 Colombo Street
Tuesday 29 June 2021	5pm	Boardroom, Beckenham Service Centre, 66 Colombo Street

Wednesday 14 July 2021	8am	Boardroom, Beckenham Service Centre, 66 Colombo Street
Tuesday 3 August 2021	5pm	Boardroom, Beckenham Service Centre, 66 Colombo Street
Wednesday 18 August 2021	8am	Boardroom, Beckenham Service Centre, 66 Colombo Street
Tuesday 31 August 2021	5pm	Boardroom, Beckenham Service Centre, 66 Colombo Street
Wednesday 15 September 2021	8am	Boardroom, Beckenham Service Centre, 66 Colombo Street
Tuesday 5 October 2021	5pm	Boardroom, Beckenham Service Centre, 66 Colombo Street
Wednesday 20 October 2021	8am	Boardroom, Beckenham Service Centre, 66 Colombo Street
Tuesday 2 November 2021	5pm	Boardroom, Beckenham Service Centre, 66 Colombo Street
Wednesday 17 November 2021	8am	Boardroom, Beckenham Service Centre, 66 Colombo Street
Tuesday 7 December 2021	5pm	Boardroom, Beckenham Service Centre, 66 Colombo Street

- a. Note that briefings will be held on Mondays of the week of ordinary meetings at 3pm.
2. Delegate the power to amend the ordinary meeting schedule for 2021 to the Community Governance Manager and Community Board Chairperson, as required.
3. Review its ordinary meeting schedule for 2021 in July 2021.

3. Reason for Report Recommendations / Ngā Take mō te Whakataurua

- 3.1 In order that the business of the Board can be conducted in an orderly manner, and to allow for public notification of meetings to be given in compliance with the Local Government Official Information and meetings Act 1987 (LGOIMA), it is recommended that the Board adopt a schedule of meetings as per the Officer Recommendation.
- 3.2 At its 15 December 2020 meeting, the Board adopted the following for its schedule for ordinary meetings in February 2021:
 - 3.2.1 Tuesday 2 February 2021 at 5pm
 - 3.2.2 Wednesday 17 February 2021 at 8am.
- 3.3 The purpose of this report is for the Waihoru/Spreydon-Cashmere Community Board to approve its ordinary meetings arrangements for the period 1 March to 31 December 2021. It is proposed that the Board adopt a meeting schedule for this period as below, with meetings generally held fortnightly alternating between Tuesdays at 5pm and Wednesdays at 8am:
 - 3.3.1 Tuesday 2 March at 5pm
 - 3.3.2 Wednesday 17 March at 8am
 - 3.3.3 Tuesday 30 March at 5pm
 - 3.3.4 Wednesday 14 April at 8am
 - 3.3.5 Tuesday 4 May at 5pm

- 3.3.6 Wednesday 19 May at 8am
 - 3.3.7 Tuesday 1 June at 5pm
 - 3.3.8 Wednesday 16 June at 8am
 - 3.3.9 Tuesday 29 June at 5pm
 - 3.3.10 Wednesday 14 July at 8am
 - 3.3.11 Tuesday 3 August from at 5pm
 - 3.3.12 Wednesday 18 August at 8am
 - 3.3.13 Tuesday 31 August at 5pm
 - 3.3.14 Wednesday 15 September at 8am
 - 3.3.15 Tuesday 5 October at 5pm
 - 3.3.16 Wednesday 20 October at 8am
 - 3.3.17 Tuesday 2 November at 5pm
 - 3.3.18 Wednesday 17 November at 8am
 - 3.3.19 Tuesday 7 December at 5pm
 - 3.3.20 Note: It is proposed that briefings be held on the Mondays of the week of ordinary meetings at 3pm to provide an opportunity for Board members and staff to receive information and have an informal discussion on issues where no decision is required at the time.
- 3.4 It is noted that holding an ordinary meeting approximately each fortnight allows for all items of business to be progressed on a regular basis. The minutes of the Board meeting will be confirmed at the following fortnightly Board meeting with any matters requiring a Council decision then referred on to the next appropriate Council meeting.
- 3.5 It is recognised that events may arise, or circumstances change, that would mean the schedule may need to be revised or additional meetings added. Any additional meetings will be appropriately publicly notified in compliance with the LGOIMA and Local Government Act 2020. The Board requested that it review its ordinary meeting schedule for 2021 in July 2021.

4. Context / Background / Te Horopaki

- 4.1 The options in this report for the Board's ordinary meeting schedule for the period 1 March to 31 December 2021 have been developed based on a number of factors:
- The Board's meeting schedule for the 2020 year
 - The holding of an ordinary Board meeting approximately each fortnight
 - Consideration of other commitments on the Council calendar, including Council meetings and briefings, Committee meetings and Recess Weeks.

Attachments / Ngā Tāpirihanga

There are no attachments for this report.

In addition to the attached documents, the following background information is available:

Document Name	Location / File Link
Not applicable	Not applicable

Confirmation of Statutory Compliance / Te Whakatūtutanga ā-Ture

Compliance with Statutory Decision-making Requirements (ss 76 - 81 Local Government Act 2002).

(a) This report contains:

- (i) sufficient information about all reasonably practicable options identified and assessed in terms of their advantages and disadvantages; and
- (ii) adequate consideration of the views and preferences of affected and interested persons bearing in mind any proposed or previous community engagement.

(b) The information reflects the level of significance of the matters covered by the report, as determined in accordance with the Council's significance and engagement policy.

Signatories / Ngā Kaiwaitohu

Author	Amy Hart - Community Board Advisor
Approved By	Jo Wells - Manager Community Governance, Spreydon-Cashmere Matthew McLintock - Manager Community Governance Team John Filsell - Head of Community Support, Governance and Partnerships

12. Elected Members' Information Exchange / Te Whakawhiti Whakaaro o Te Kāhui Amorangi

This item provides an opportunity for Board Members to update each other on recent events and/or issues of relevance and interest to the Board.