

**Waihoru**  
**Spreydon-Cashmere Community Board**  
**AGENDA**

---

**Notice of Meeting:**

An ordinary meeting of the Waihoru/Spreydon-Cashmere Community Board will be held on:

**Date:** Tuesday 3 March 2020  
**Time:** 5pm  
**Venue:** Church Hall, Cashmere Presbyterian Church,  
2 Macmillan Avenue, Cashmere

---

**Membership**

Chairperson	Karolin Potter
Deputy Chairperson	Lee Sampson
Members	Melanie Coker
	Keir Leslie
	Tim Scandrett
	Callum Stewart-Ward

---

**26 February 2020**

Emma Pavey  
Manager Community Governance, Spreydon-Cashmere  
941 5107  
emma.pavey@ccc.govt.nz  
[www.ccc.govt.nz](http://www.ccc.govt.nz)

Note: The reports contained within this agenda are for consideration and should not be construed as Council policy unless and until adopted. If you require further information relating to any reports, please contact the person named on the report.

**To view copies of Agendas and Minutes, visit:**

<https://www.ccc.govt.nz/the-council/meetings-agendas-and-minutes/>



## Ōtautahi-Christchurch is a city of opportunity for all

Open to new ideas, new people and new ways of doing things – a city where anything is possible

### Principles

Being open, transparent and democratically accountable	Promoting equity, valuing diversity and fostering inclusion	Taking an inter-generational approach to sustainable development, prioritising the social, economic and cultural wellbeing of people and communities and the quality of the environment, now and into the future	Building on the relationship with Te Rūnanga o Ngāi Tahu and the Te Hononga-Council Papatipu Rūnanga partnership, reflecting mutual understanding and respect	Ensuring the diversity and interests of our communities across the city and the district are reflected in decision-making	Actively collaborating and co-operating with other local, regional and national organisations
--	---	--	---	---	---

### Community Outcomes

<b>Resilient communities</b> Strong sense of community Active participation in civic life Safe and healthy communities Celebration of our identity through arts, culture, heritage, sport and recreation Valuing the voices of all cultures and ages (including children)	<b>Liveable city</b> Vibrant and thriving city centre Sustainable suburban and rural centres A well connected and accessible city promoting active and public transport Sufficient supply of, and access to, a range of housing 21st century garden city we are proud to live in	<b>Healthy environment</b> Healthy water bodies High quality drinking water Unique landscapes and indigenous biodiversity are valued and stewardship exercised Sustainable use of resources and minimising waste	<b>Prosperous economy</b> Great place for people, business and investment An inclusive, equitable economy with broad-based prosperity for all A productive, adaptive and resilient economic base Modern and robust city infrastructure and community facilities
--	---	--	---

### Strategic Priorities

Enabling active and connected communities to own their future	Meeting the challenge of climate change through every means available	Ensuring a high quality drinking water supply that is safe and sustainable	Accelerating the momentum the city needs	Ensuring rates are affordable and sustainable
---	---	--	--	---

### Ensuring we get core business done while delivering on our Strategic Priorities and achieving our Community Outcomes

Engagement with the community and partners	Strategies, Plans and Partnerships	Long Term Plan and Annual Plan	Our service delivery approach	Monitoring and reporting on our progress
--	------------------------------------	--------------------------------	-------------------------------	--

---

Part A	Matters Requiring a Council Decision
Part B	Reports for Information
Part C	Decisions Under Delegation

---

## TABLE OF CONTENTS

C	1.	Apologies / Ngā Whakapāha.....	4
B	2.	Declarations of Interest / Ngā Whakapuaki Aronga .....	4
C	3.	Confirmation of Previous Minutes / Te Whakaāe o te hui o mua .....	4
B	4.	Public Forum / Te Huinga Whānui.....	4
B	5.	Deputations by Appointment / Ngā Huinga Whakaritenga .....	4
B	6.	Presentation of Petitions / Ngā Pākikitanga.....	4

## STAFF REPORTS

C	7.	Proposed Parking Restrictions - Lincoln Road, Annex Road and Lyttelton Street.....	9
B	8.	Elected Members' Information Exchange.....	20

## **1. Apologies / Ngā Whakapāha**

At the close of the agenda no apologies had been received.

## **2. Declarations of Interest / Ngā Whakapuaki Aronga**

Members are reminded of the need to be vigilant and to stand aside from decision making when a conflict arises between their role as an elected representative and any private or other external interest they might have.

## **3. Confirmation of Previous Minutes / Te Whakaāe o te hui o mua**

That the minutes of the Waihoru/Spreydon-Cashmere Community Board meeting held on [Tuesday, 18 February 2020](#) be confirmed (refer page 5).

## **4. Public Forum / Te Huinga Whānui**

A period of up to 30 minutes will be available for people to speak for up to five minutes on any issue that is not the subject of a separate hearings process.

## **5. Deputations by Appointment / Ngā Huinga Whakaritenga**

Deputations may be heard on a matter or matters covered by a report on this agenda and approved by the Chairperson.

There were no deputations by appointment at the time the agenda was prepared.

## **6. Presentation of Petitions / Ngā Pākikitanga**

There were no petitions received at the time the agenda was prepared.

---

## Waihoru Spreydon-Cashmere Community Board OPEN MINUTES

---

**Date:** Tuesday 18 February 2020  
**Time:** 8am  
**Venue:** Boardroom, Beckenham Service Centre,  
66 Colombo Street, Beckenham

---

**Present**

Chairperson	Karolin Potter
Deputy Chairperson	Lee Sampson
Members	Melanie Coker
	Keir Leslie
	Tim Scandrett
	Callum Stewart-Ward

---

18 February 2020

Emma Pavey  
Manager Community Governance, Spreydon-Cashmere  
941 5107  
emma.pavey@ccc.govt.nz  
[www.ccc.govt.nz](http://www.ccc.govt.nz)

To view copies of Agendas and Minutes, visit:  
[www.ccc.govt.nz/the-council/meetings-agendas-and-minutes/](http://www.ccc.govt.nz/the-council/meetings-agendas-and-minutes/)

- 
- Part A**      **Matters Requiring a Council Decision**  
**Part B**      **Reports for Information**  
**Part C**      **Decisions Under Delegation**
- 

The agenda was dealt with in the following order.

**1. Apologies / Ngā Whakapāha**

**Part C**  
**Community Board Decision**

There were no apologies.

**2. Declarations of Interest / Ngā Whakapuaki Aronga**

**Part B**  
There were no declarations of interest recorded.

**3. Confirmation of Previous Minutes / Te Whakaāe o te hui o mua**

**Part C**  
**Community Board Resolved SCCB/2020/00007**

That the minutes of the Waihoru/Spreydon-Cashmere Community Board meeting held on Tuesday, 4 February 2020 be confirmed.

Lee Sampson/Tim Scandrett

**Carried**

**4. Public Forum / Te Huinga Whānui**

**Part B**

**4.1 Summit Road Society-New Lookout Project**

**Part B**

Marie Gray and Paula Jameson of the Summit Road Society's presented to the Board on the Society's proposal for a new lookout, which is planned for the carpark at the Sign of the Bellbird. Consultation has been undertaken with the public, and artist's impressions of the lookout were shown to the meeting.

#### **4.2 Cashmere Road/Barrington Street Intersection**

##### **Part B**

Local resident Jaclyn Pow addressed the Board regarding her concerns about pedestrian safety on Cashmere Road between its intersection with Dyers Pass Road and Barrington Street. Ms Pow explained that while there is a pedestrian refuge it does not feel a safe place to cross largely due vehicle speed and driver behaviour on Cashmere Road.

After questions from members, the Chairperson thanked Ms Pow for her presentation.

The Board requested staff advice on measures that can be implemented to improve pedestrian safety across Cashmere Road in the vicinity of Barrington Street.

#### **4.3 Addington Road Safety and Proposed Playground Re-Development**

##### **Part B**

Jo Robertson spoke on behalf of the Addington Primary School Board and Addington community and outlined concerns about the safety of pedestrians, particularly school pupils crossing Brougham Street at the Selwyn Street and Collins Street crossings.

Ms Robertson explained that the concern centres on vehicle noting that the speed limit on Brougham Street changes from 100 kilometres per hour to 60 kilometres per hour close to the Collins Street intersection. In addition she does not consider that road signage indicating the school is adequate.

Ms Robertson also outlined a proposal for renewal of the Addington Primary School playground that it is hoped may provide a safe play area for the community and address local concerns about the lack of safe play spaces in the locality.

After questions from members, the Chairperson thanked Ms Robertson for her presentation.

The Board requested staff advice on the safety of local parks in the Addington area, including Addington Park and whether they comply with the principles of Crime Prevention Through Environmental Design.

#### **5. Deputations by Appointment / Ngā Huinga Whakaritenga**

##### **Part B**

There were no deputations by appointment.

#### **6. Presentation of Petitions / Ngā Pākikitanga**

##### **Part B**

There was no presentation of petitions.

## 7. Marylands Place - Proposed No Stopping Restrictions

**Community Board Resolved SCCB/2020/00008 (Original staff recommendations accepted without change)**

### Part C

That the Waihoru/Spreydon-Cashmere Community Board:

1. Approves under clause 7 of the Christchurch City Council Traffic and Parking Bylaw 2017, that the stopping of vehicles be prohibited at all times on Marylands Place as shown by broken yellow lines on drawing TG133788, issue.1 dated 14/06/2019 attached to the agenda for this meeting.
2. Revokes any previous resolutions pertaining to traffic controls made pursuant to any bylaw to the extent that they are in conflict with the traffic controls described in 1.
3. Approves that these resolutions take effect when road marking that evidences the restrictions described in 1. and 2. are in place (or removed in the case of revocations).

Melanie Coker/Lee Sampson

Carried

## 8. Elected Members' Information Exchange

### Part B

Board Members shared the information on the following:

- Local residents have expressed concerns around pedestrian safety on Tennyson Street – the Board noted that staff advice on the Priority for Pedestrian Safety improvements on roads is pending.
- Lower Cashmere Residents' Association has held its Annual General Meeting.
- There are concerns about motorcycles using the public walkway on Derrett Place.
- It was noted that the Draft Annual General Plan has been passed by the Council.

### 8.1 Cracroft Terrace centre line

The Board requested staff advice on the inclusion of a white centre line along Cracroft Terrace in the vicinity of Sulby Road.

**Meeting concluded at 9.31am.**

**CONFIRMED THIS 3RD DAY OF MARCH 2020**

**KAROLIN POTTER  
CHAIRPERSON**



## 7. Proposed Parking Restrictions - Lincoln Road, Annex Road and Lyttelton Street

Reference / Te Tohutoro: 20/42048

Presenter(s) / Te kaupāhō: Stephen Wright – Team Leader, Traffic Operations

### 1. Purpose of Report / Te Pūtake Pūrongo

- 1.1 The purpose of this report is for the Waihoru/Spreydon-Cashmere Community Board to approve the no stopping restrictions, P3 parking restrictions and school bus parking restrictions as shown on Attachments A and B.

### 2. Executive Summary / Te Whakarāpopoto Matua

- 2.1 This report is staff generated in response to a request from the Ministry of Education and West Spreydon School in developing a travel plan to allow West Spreydon School to operate at their temporary site at 2 Halswell Road while their school on Lyttelton Street is being re-built.
- 2.2 The proposed school bus parking restrictions will allow a designated area for buses to wait when picking-up and dropping-off students to transport them between West Spreydon School and their temporary school site on 2 Halswell Road. In addition, there is very limited parking at the temporary school site and the P3 parking restriction will ensure that there are some spaces available for parents and caregivers wishing to pick-up/drop-off students themselves.
- 2.3 Following the initial request, the bus parking spaces on Lyttelton Street and Halswell Road have been issued to be installed using the provision available under Clause 9 of the Christchurch City Council Traffic and Parking Bylaw 2017. This provision allows the bus parks to be in place for a period of three months from installation unless the Council, by resolution, has approved its continued use. It was critical for the operation of the school that the signs and markings for the bus parking spaces are in place by the start of Term One, 3 February 2020.
- 2.4 Both, the school bus parking restriction and the P3 parking restriction will only be in place whilst West Spreydon School is being re-built.

### 3. Staff Recommendations / Ngā Tūtohu

That the Waihoru/Spreydon-Cashmere Community Board resolve to approve:

School bus parking restriction beside West Spreydon School on Lyttelton Street:

1. Under clause 7 of the Christchurch City Council Traffic and Parking Bylaw 2017, that the stopping of vehicles is prohibited on the part of Lyttelton Street referred to as A1 and as shown by broken yellow lines, identified as 'No Stopping Restrictions' on drawing TG136501 Issue 1, dated 14/01/2020, Attachment A of the report attached to the meeting agenda.
2. Under clause 8 of the Christchurch City Council Traffic and Parking Bylaw 2017, that the part of Lyttelton Street referred to as A1, identified as 'School Bus Parking Restriction on School Days Only' on drawing TG136501 Issue 1, dated 14/01/2020, Attachment A of the report attached to the meeting agenda, is reserved as a parking place for the exclusive use of school buses between the times of 8 – 9am and 2.30 – 4pm on school days only.

School bus parking restriction beside 2 Halswell Road:

3. Under clause 7 of the Christchurch City Council Traffic and Parking Bylaw 2017, that the stopping of vehicles is prohibited on the part of Halswell Road referred to as A1 and as shown by broken yellow lines, identified as 'No Stopping Restrictions' on drawing TG135582 Issue 1, dated 14/11/2019, Attachment B of the report attached to the meeting agenda.
4. Under clause 8 of the Christchurch City Council Traffic and Parking Bylaw 2017, that the part of Halswell Road referred to as A1, identified as 'School Bus Parking Restriction on School Days Only' on drawing TG135582 Issue 1, dated 14/11/2019, Attachment B of the report attached to the meeting agenda, is reserved as a parking place for the exclusive use of school buses between the times of 8 – 9am and 2.30 – 4pm on school days only.

P3 parking restriction on Annex Road:

5. Under Clause 8 of the Christchurch City Council Traffic and Parking Bylaw, that the part of Annex Road referred to as A2, identified as 'P3 School Days Parking Restriction' on drawing TG135582 Issue 1, dated 14/11/2019, Attachment B of the report attached to the meeting agenda, is reserved as a parking place for any vehicles, subject to the following restriction: the maximum time for parking of any vehicle is three minutes between the hours of 8am to 9am and 2.30pm to 4pm School Days Only.

No stopping restrictions on Halswell Road:

6. Under clause 7 of the Christchurch City Council Traffic and Parking Bylaw 2017, that the stopping of vehicles is prohibited on the part of Halswell Road referred to as A3 and as shown by broken yellow lines, identified as 'No Stopping Restrictions' on drawing TG135582 Issue 1, dated 14/11/2019, Attachment B of the report the attached to the meeting agenda.
7. That any previous resolutions pertaining to traffic controls made pursuant to any bylaw to the extent that they are in conflict with the traffic controls described in 1.,2.,3.4.,5., and 6. are revoked.
8. That these resolutions take effect when parking signage and/or road marking that evidence the restrictions described in 1.,2.,3.4.,5., and 6 are in place (or removed in the case of revocations).

#### 4. Key Points / Ngā Take Matua

- 4.1 The recommendations in this report are consistent with the anticipated outcomes of the Traffic Safety & Efficiency Service Plan in the [Councils Long Term Plan \(2018 - 2028\)](#).
- 4.2 The following feasible options have been considered:
  - Option 1 - Install parking restrictions on Lincoln Road, Annex Road and Lyttelton Street as shown on Attachments A and B (preferred option)
  - Option 2 - Do Nothing
- 4.3 Option Summary - Advantages and Disadvantages (Preferred Option)
  - 4.3.1 The advantages of this option include:
    - Reduces the risk of a crash (Pedestrian vs Vehicle) by improving visibility and accessibility at the pedestrian crossing point;
    - Provides parking spaces for the pickups/drop-offs for the parents and caregivers;
    - Provides designated areas for the school buses to wait when picking-up and dropping-off students to transport them between West Spreydon School to their temporary school site on 2 Halswell Road;

- Supports school safety by reducing the number of vehicles (parents/caregivers picking up and dropping off children) travelling to the temporary school site as there is very limited parking surrounding 2 Halswell Road; and
- The P3 parking restrictions and the school bus parking restriction will be temporary. They will be installed for the duration of the re-build of West Spreydon School.

4.3.2 The disadvantages of this option include:

- Removes car parking spaces.

## 5. Context/Background / Te Horopaki

### Issue / Ngā take

- 5.1 Council staff was approached by West Spreydon School and the Ministry of Education in developing a travel plan for their temporary site (2 Halswell Road) and as a result some safety concerns were raised. These relate to pedestrian safety and drop-off/ pick-up zones.

### Strategic Alignment / Te Rautaki Tīaroaro

- 5.2 Council's strategic priorities have been considered in formulating the recommendations in this report, however this area of work is not specifically covered by an identified priority.
- 5.3 The recommendations in this report will help to achieve the desired community outcome of a well-connected and accessible city through improved road safety.
- 5.4 The recommendations in this report are also consistent with the anticipated outcomes of the Traffic Safety & Efficiency Service Plan in the [Councils Long Term Plan \(2018 - 2028\)](#).

### Decision Making Authority Te Mana Whakatau

- 5.5 Part 1, Clauses 7 and 8 of the Christchurch City Council Traffic and Parking Bylaw 2017 provides Council with the authority to install parking restrictions by resolution.
- 5.6 The Community Boards have delegated authority from the Council to exercise the delegations as set out in the Register of Delegations. The list of delegations for the Community Boards includes the resolution of stopping restrictions and traffic control devices.
- 5.7 The installation of any signs and/or markings associated with traffic control devices must comply with the Land Transport Rule: Traffic Control Devices 2004.

### Assessment of Significance and Engagement / Te Aromatawai Whakahirahira

- 5.8 The decisions in this report are of low significance in relation to the Christchurch City Council's Significance and Engagement Policy.
- 5.9 The level of significance was determined by the low level of impact and low number of people affected by the recommended decision
- 5.10 The community engagement and consultation outlined in this report reflect the assessment

### Context/ Te Horopaki

- 5.11 The investigation was initiated by staff following requests from the Ministry of Education and West Spreydon School.
- 5.12 West Spreydon School are having their school renovated on Lyttelton Street. Their temporary school site will be located on 2 Halswell Road until the re-build on Lyttelton Street is complete.

- 5.13 At the temporary schools site on 2 Halswell Road, there is very limited parking for the pick-ups and drop-offs for parents/caregivers. Given the distance between the two sites, a challenge is faced as to how to transfer students from one site to the other.
- 5.14 The Ministry of Education and West Spreydon School have agreed to provide three buses to and from the two sites during school pick-up and drop-off times (8 – 9am and 2.30 – 4pm).
- 5.15 It was critical for the operation of the school that the school bus parking spaces were in place by the start of Term One, 3 February 2020 so in order for that to occur, the bus parking spaces have been issued to be installed in accordance with the provisions set out in Part 9 of the Council's Traffic and Parking Bylaw 2017, which allows for temporary discontinuance of a parking place for the stopping or standing provisions for specified vehicles at that parking place. However, any sign or traffic control installed under this clause must be removed after a period of three months from installation unless the Council, by resolution, has approved its continued use.
- 5.16 Compliance with Part 9 of the Council's Traffic and Parking Bylaw 2017 means that the school bus parking spaces can only be in place for 90 days after its installation, after which time the school bus parking restriction will either have to be removed, or by resolution the permanent bus parking spaces are approved by the respective Community Board.
- 5.17 It is important for the Community Board to be aware that should they proceed with the 'Do Nothing' option there will be no area available for three school buses to park and transport students between the two sites.
- 5.18 The proposed P3 on Annex Road will ensure that some pick-up/drop-off parking spaces are provided for those who wish to pick-up/drop-off their children.
- 5.19 While investigating the walking routes, staff noticed that the crossing point in front of 16 Lincoln Road should be made safer by installing No Stopping Restrictions. This will ensure that the crossing is un-obstructed allowing pedestrians access to the crossing facility and improve the visibility for pedestrians to see oncoming vehicles. In addition, it will also allow vehicles improved visibility of pedestrians crossing Lincoln Road.

## 6. Options Analysis / Ngā Kōwhiringa Tātari

### Options Considered Ngā Kōwhiringa Whaiwhakaaro

- 6.1 The following reasonably practicable options were considered and are assessed in this report:
- Option 1 - Install parking restrictions on Lincoln Road, Annex Road and Lyttelton Street as shown on Attachments A and B (preferred option)
  - Option 2 - Do nothing, the school bus parking restriction will be removed after 90 days from its date of installation.
- 6.2 No other options were considered.

### Options Descriptions / Ngā Kōwhiringa

- 6.3 **Option One: Preferred Option:** Install parking restrictions
- 6.4 **Option Description:** Install parking restrictions on Lincoln Road, Annex Road and Lyttelton Street as shown on Attachments A and B (preferred option)

#### 6.4.1 Option Advantages

- Reduces the risk of a crash (Pedestrian vs Vehicle) by improving visibility and accessibility at the pedestrian crossing point;
- Provides parking spaces for the pick-ups/drop-offs for the parents and caregivers;

- Provides designated areas for the school buses to wait when picking-up and dropping-off students to transport them between West Spreydon School to their temporary school site on 2 Halswell Road;
- Supports school safety by reducing the number of vehicles (parents/caregivers picking up and dropping off children) travelling to the temporary school site as there is very limited parking surrounding 2 Halswell Road; and
- The P3 parking restrictions and the bus parking restriction will be temporary. They will be installed for the duration of the construction of the West Spreydon School.

#### 6.4.2 Option Disadvantages

- The no stopping restriction in front of 16 Lincoln Road removes parking.
- The school bus parking areas on Lincoln Road and Lyttelton Street and P3 on Annex Road will restrict parking during the school pick-ups /drop-off times.

#### 6.5 Option Two: Do Nothing

6.5.1 **Option Description:** Retain existing parking layout.

#### 6.5.2 Option Advantages

- Retains existing parking layout, no parking loss.

#### 6.5.3 Option Disadvantages

- Does not support school safety and does not align with Council policies.
- There will be no designated areas for the school buses to pick-up and drop-off students which will affect the operation of the school bus shuttle service. In addition, buses may be parked in locations which may affect the safety of students and other road users.

### Analysis Criteria / Ngā Paearu Wetekina

6.6 Options within this report have been assessed against the sight distance requirements of Council's Infrastructure Design Standard.

## 7. Community Views and Preferences / Ngā mariu ā-Hāpori

- 7.1 Affected property owners and residents were advised of the recommended option by letter drops on the 16<sup>th</sup> January 2020 and given 2 weeks to provide a feedback should they wish. Letters were also sent to absentee owners.
- 7.2 The consultation catchment area for the proposed school bus park on Lyttelton Street beside West Spreydon School is shown in Figure 1.





Figure 1: Bus parking on Lyttelton Street beside West Spreydon School, consultation catchment area

- 7.3 The Team Leader Parking Compliance supports the preferred option.
- 7.4 It should be noted that the school bus parking restrictions on Lyttelton Street and Halswell Road and the P3 parking restriction on Annex Road are located on the frontages of either West Spreydon School or their temporary school site. Both the West Spreydon School's principal and the Ministry of Education are supportive of the proposal.
- 7.5 At the time of writing this report, there was one feedback received regarding the school bus park on Lyttelton Street. The submitter was in support of the proposal and stated that it would be a great idea as the children will love going to school on the bus. Also at the time of writing this report, there was one feedback received in regarding to the no stopping restrictions on Halswel Road. The submitter was in support and stated that it was a good idea safety wise.

## 8. Legal Implications / Ngā Hīraunga ā-Ture

- 8.1 There is a legal context, issue or implication relevant to this decision
- 8.2 This specific report has not been reviewed and approved by the Legal Services Unit however the report has been written using a general approach previously approved of by the Legal Services Unit, and the recommendations are consistent with the policy and legislative framework outlined in sections 5.5-5.7.

## 9. Next Steps / Ngā mahinga ā-muri

- 9.1 Approval is required by the Waihoru/Spreydon-Cashmere Community Board.

- 9.2 If approved, the recommendations will be implemented approximately four weeks after the contractor receives the request.

9.3

Issue Specific Criteria			
Criteria		Option 1 – Install Parking Restrictions	Option 2 – Do Nothing
Financial Implications	Cost to Implement	The cost to install the traffic controls for the proposed bus parking (\$5,000-\$6,000) will be covered by the Ministry of Education. \$750 for the consultation and the preparation of this report. For the installation of the broken yellow lines = \$100 including TMP. \$250 for the supply and installation of the traffic controls in regards to the P3 restriction on Annex Road.	\$750 for the consultation and the preparation of this report
	Maintenance/Ongoing	Will be covered under the area maintenance contract and effect will be minimal to the overall asset	\$0
	Funding Source	Traffic Operations Budget	Existing Staff budgets
	Impact on Rates	No Impact	No impact
School Safety		Supports school safety and improves on site traffic management	No Impact
Pedestrian Safety		Significant visibility and accessibility improvements	No Impact
Environmental Impacts		Bus stops provide access to public transport. Public transport is part of a wider transport package to support mode shift to reduce greenhouse gas emissions, reduce traffic congestion and traffic crashes. This in turn helps the Council provide a healthy environment and liveable city (Council's strategic framework)	No Impact



## Attachments / Ngā Tāpirihanga

No.	Title	Page
A <a href="#">↓</a>	West Spreydon School - Lyttelton Street	18
B <a href="#">↓</a>	West Spreydon School - Halswell Road	19

## Confirmation of Statutory Compliance / Te Whakatūturutanga ā-Ture

Compliance with Statutory Decision-making Requirements (ss 76 - 81 Local Government Act 2002).

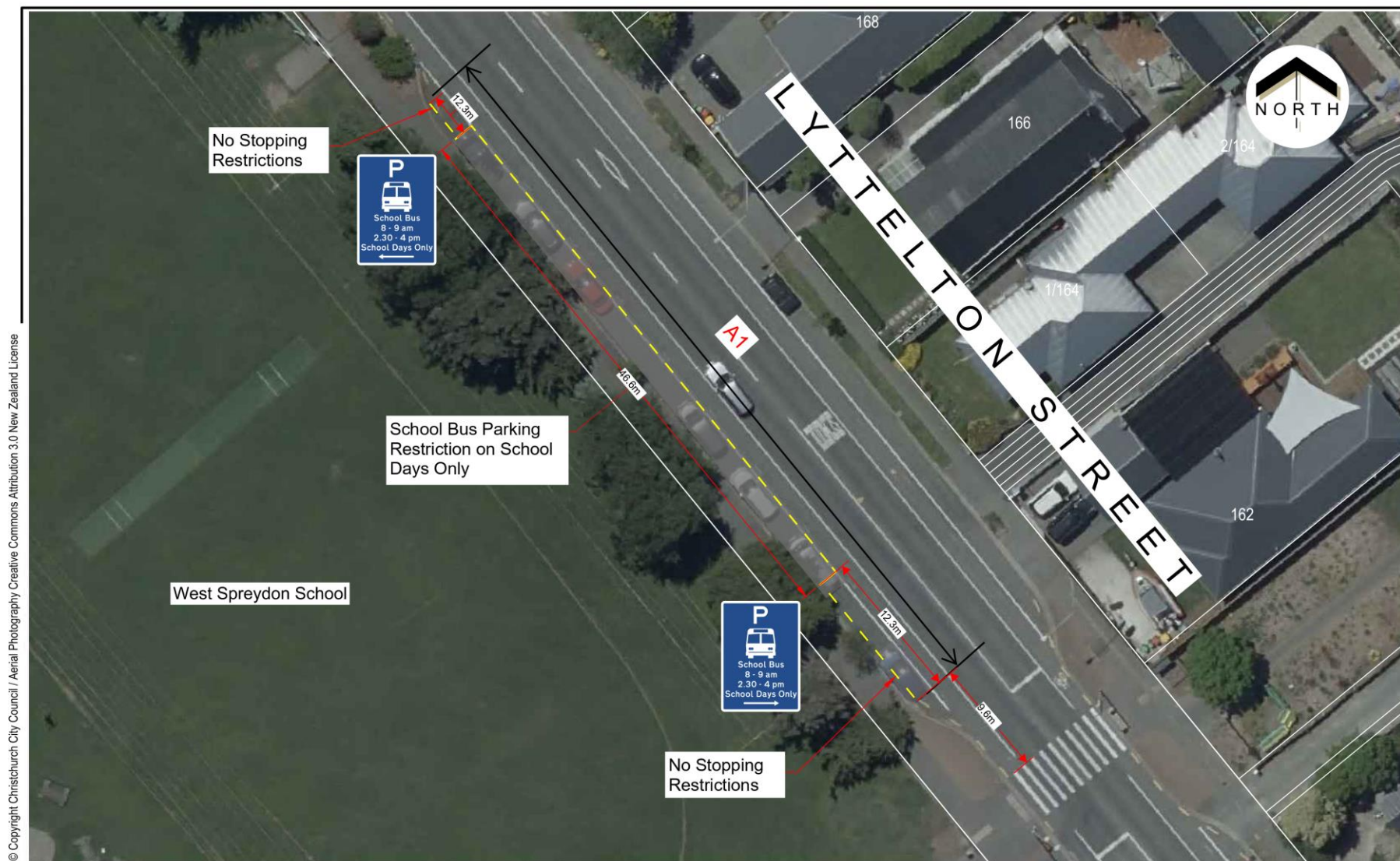
(a) This report contains:

- (i) sufficient information about all reasonably practicable options identified and assessed in terms of their advantages and disadvantages; and
- (ii) adequate consideration of the views and preferences of affected and interested persons bearing in mind any proposed or previous community engagement.

(b) The information reflects the level of significance of the matters covered by the report, as determined in accordance with the Council's significance and engagement policy.

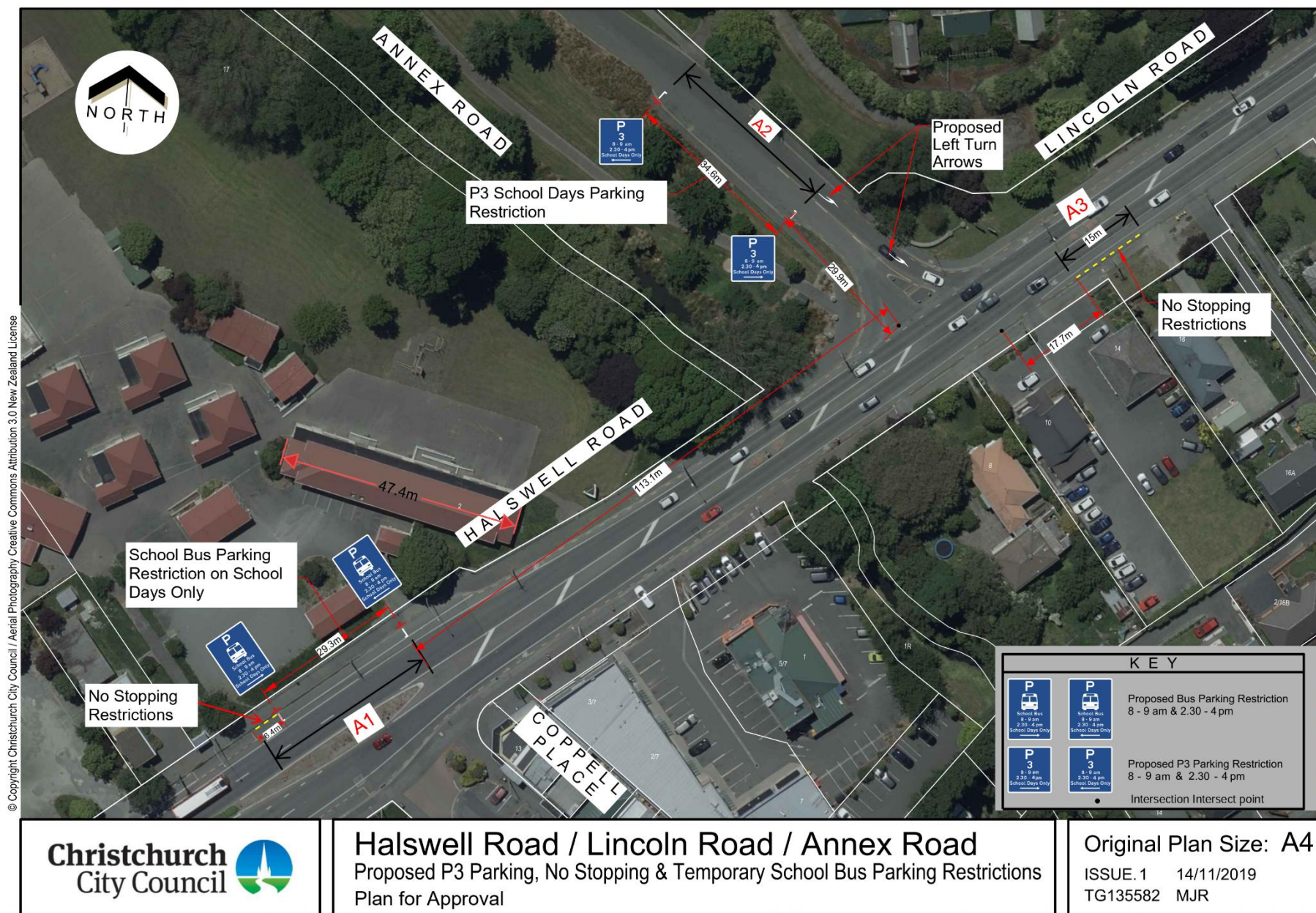
## Signatories / Ngā Kaiwaitohu

<b>Authors</b>	Privinn Mwene - Traffic Engineer Patricia Su - Passenger Transport Engineer
<b>Approved By</b>	Stephen Wright - Team Leader Traffic Operations Steffan Thomas - Manager Operations (Transport) Richard Osborne - Head of Transport



© Copyright Christchurch City Council / Aerial Photography Creative Commons Attribution 3.0 New Zealand License





---

## 8. Elected Members' Information Exchange

---

This item provides an opportunity for Board Members to update each other on recent events and/or issues of relevance and interest to the Board.