



Te Pātaka o Rākaihautū
Banks Peninsula Community Board
MINUTES ATTACHMENTS

Date: Monday 5 August 2019
Time: 10am
Venue: Lyttelton Community Boardroom,
25 Canterbury Street, Lyttelton

TABLE OF CONTENTS	PAGE
4.2 Public Forum - Graham Dingle Foundation	
A. PowerPoint Presentation.....	3
5.1 Summit Road Parking Occupancy Survey	
A. PowerPoint Presentation.....	14



We want every child to know:
**What you have inside
is greater than any
obstacle.**



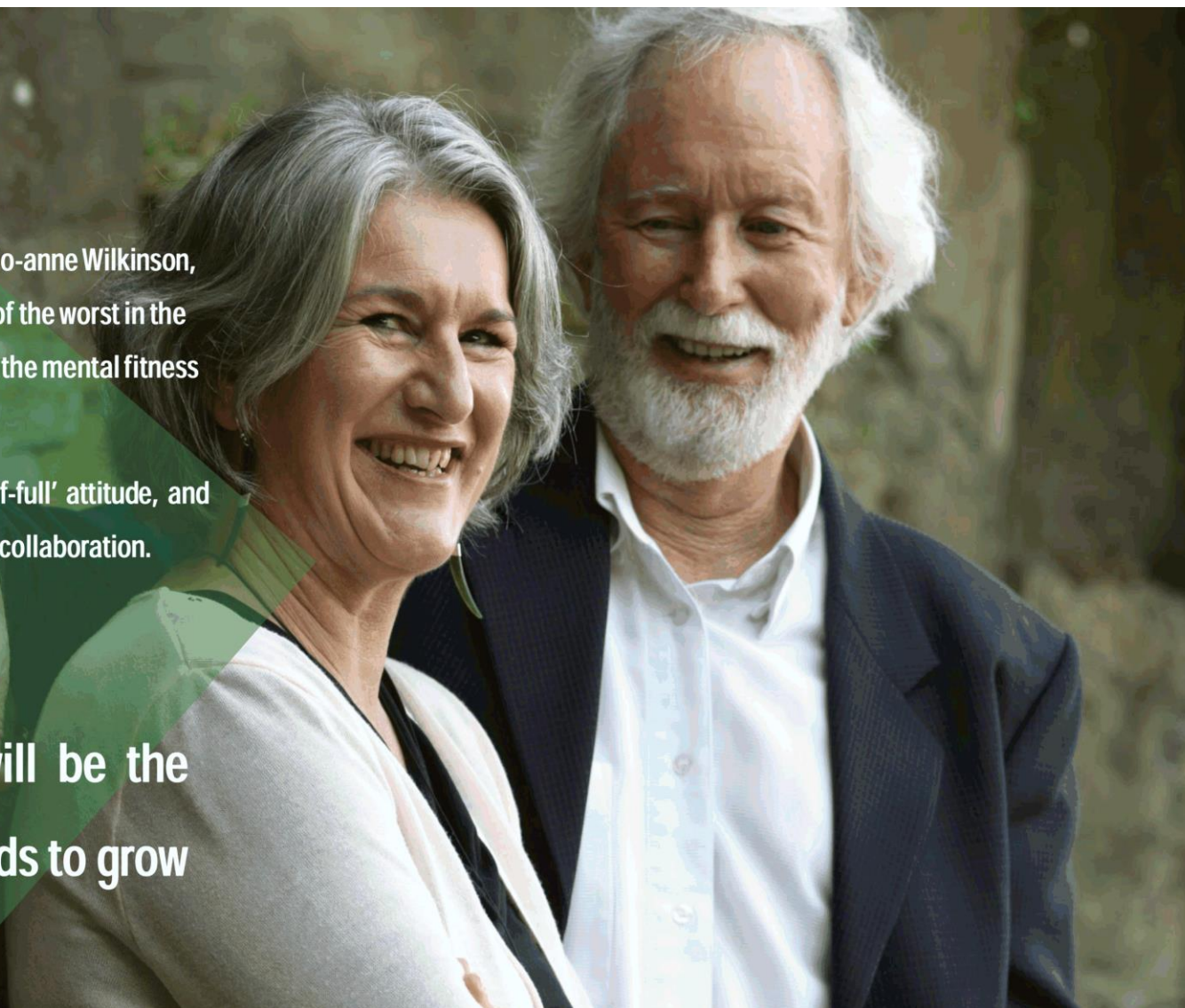
**GRAEME DINGLE
FOUNDATION**
Transforming young lives forever
Oranga Taiohi, Oranga Ake

Our story.

Founded by Kiwi legends, Sir Graeme Dingle and Jo-anne Wilkinson, in response to NZ's woeful youth statistics (some of the worst in the OECD), we've walked alongside and strengthened the mental fitness of young Kiwis for the past 24 years.

We're positive, upbeat, with a can-do, 'glass-half-full' attitude, and we believe our vision is possible, but only through collaboration.

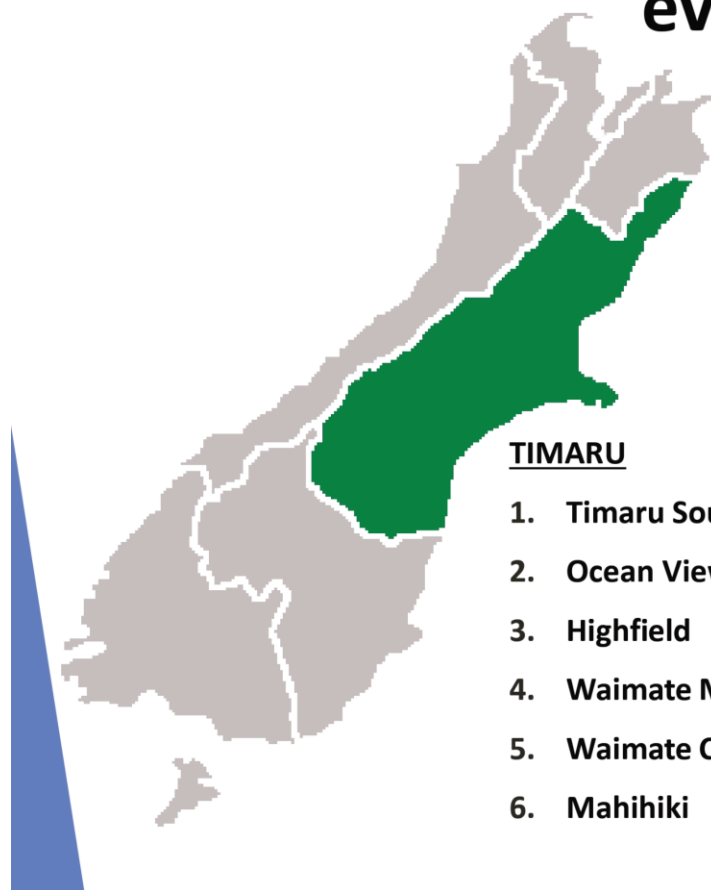
Our vision: By 2050, NZ will be the best place in the world for kids to grow up.



Graeme Dingle Foundation Canterbury

3500 students

every class, every week.



ASHBURTON

1. Wakanui

TIMARU

1. Timaru South School
2. Ocean View Heights
3. Highfield
4. Waimate Main
5. Waimate Cenntenial
6. Mahihiki

CHRISTCHURCH

1. Te Waka Unua
2. Lyttleton
3. St Annes
4. Gilberthorpe
5. Burnside
6. Bamford
7. St Bernadettes
8. Wakanui
9. Hornby High yr 7/8
10. Hornby High
11. Whitau / Linwood North
12. Linwood College



Lyttelton Primary School



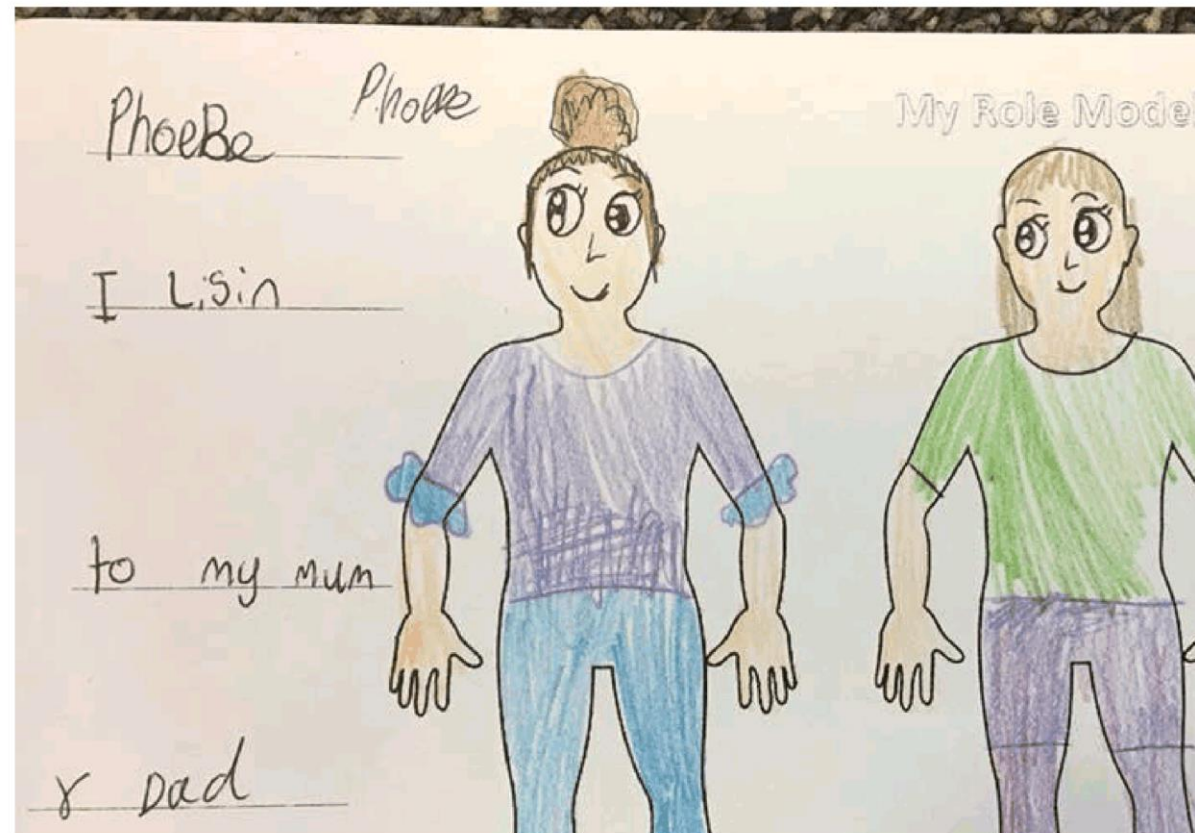

**GRAEME DINGLE
FOUNDATION**
Transforming young lives forever
Oranga Taiohi, Oranga Ake

Lyttelton Primary School




**GRAEME DINGLE
FOUNDATION**
Transforming young lives forever
Oranga Taiohi, Oranga Ake

Lyttelton Primary School



Lyttelton Primary School

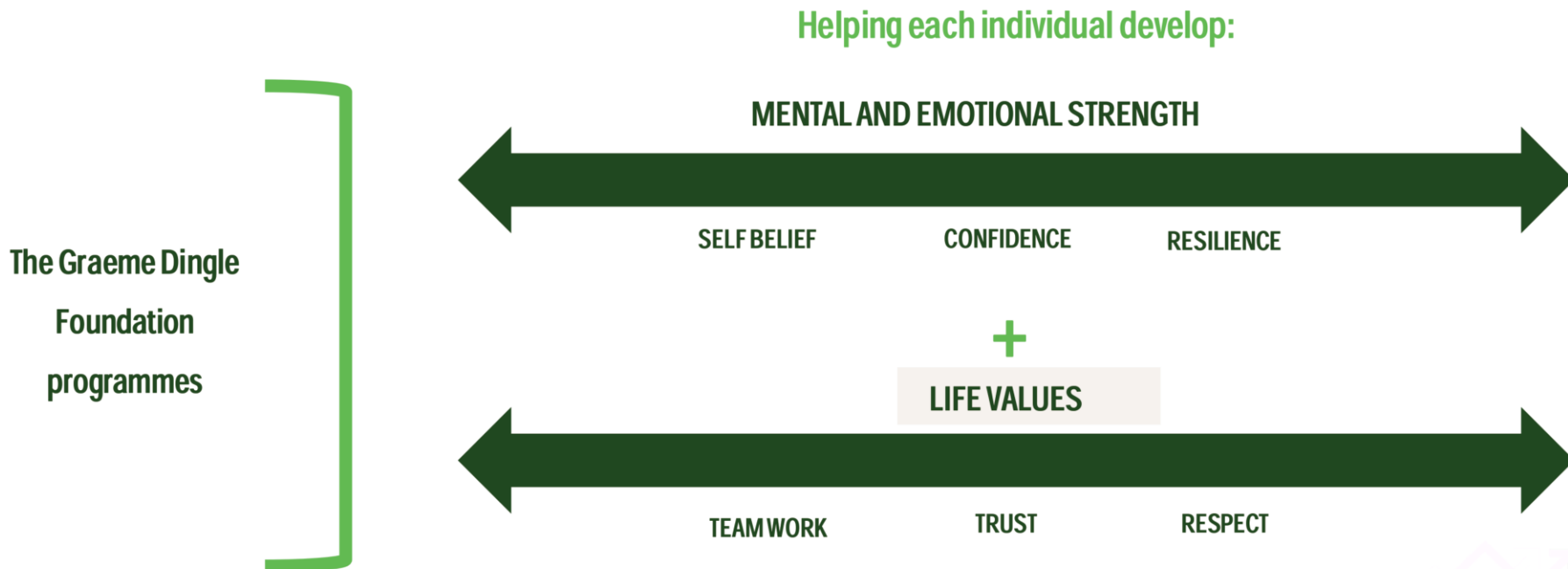


Lyttelton Primary School




**GRAEME DINGLE
FOUNDATION**
Transforming young lives forever
Oranga Taiohi, Oranga Ake

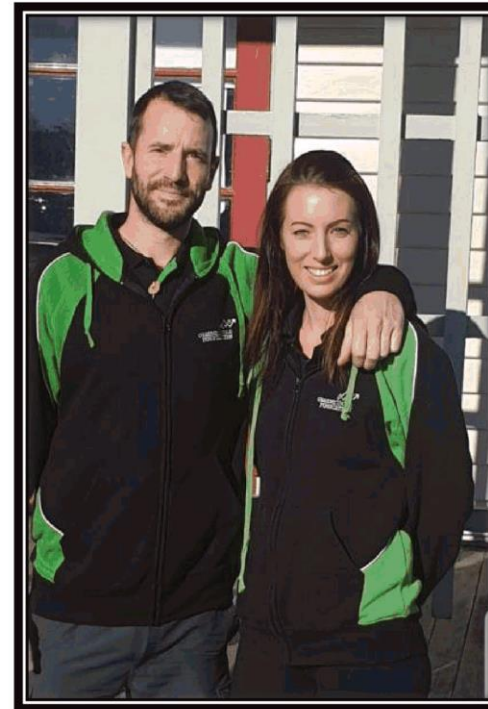
What Students Learn.



The Kiwi Can Team



Christchurch Team



Timaru Team







Why would someone park at the Sign of the Kiwi

- Go for a walk
- Look at the view
- Go to café
- Go for a run
- Use toilets – only ones in vicinity
- Get away from the city
- Peaceful area / reduce stress (Mental Health)
- Work in café
- Any combination of the above
 - Perhaps cycling, but likely to park elsewhere
 - Rock climbing and para-gliding park elsewhere

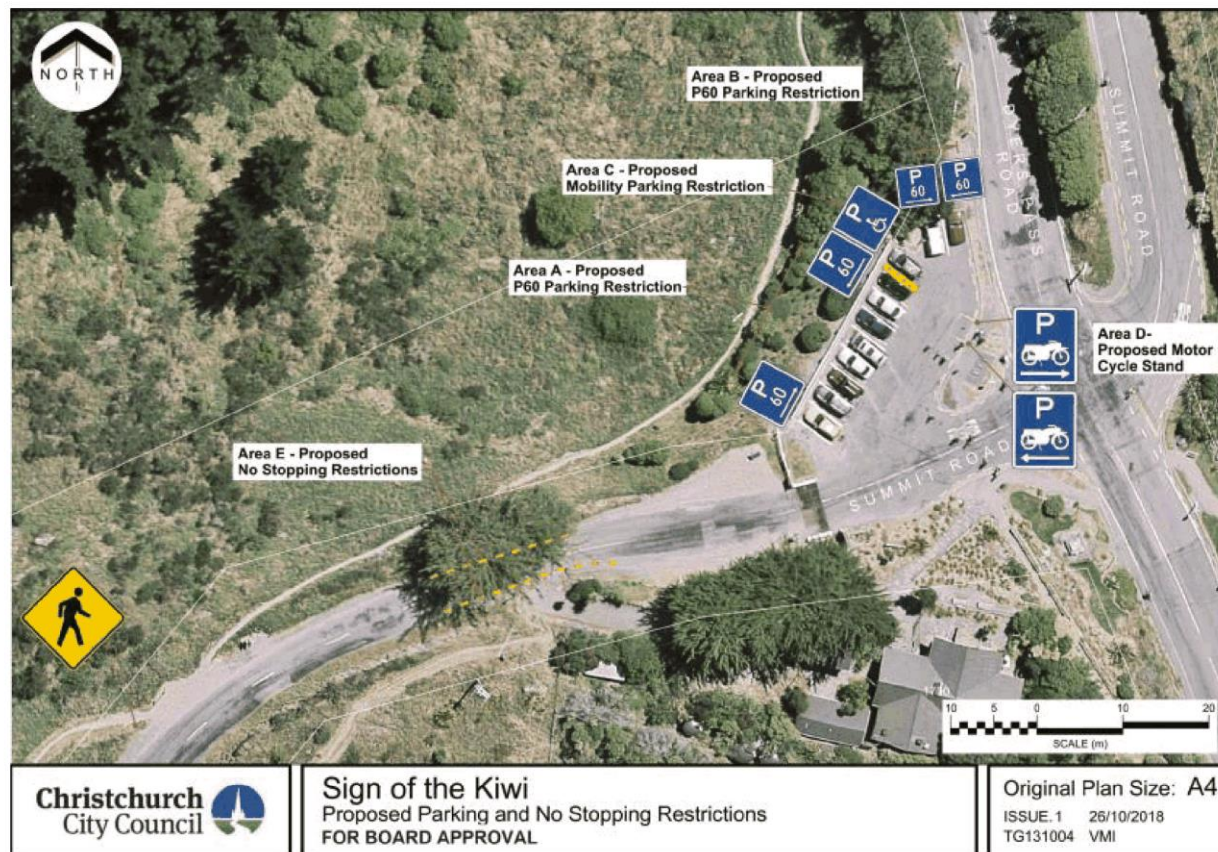
Factors that affect number of vehicles

- Time of day
- Day of week – Sundays, Saturdays, weekdays, statutory holidays, school holidays
- Seasons – Winter, Spring, Summer, Autumn
- Weather – warm, freezing, wet, sunny, snowing, windy, still
- Closeness to café and opening hours
- Nearby tracks – convenient starting point
- Longer tracks – convenient starting point
- View
- Toilets nearby
- Personal safety – varies depending on numbers around
- Vehicle safety – varies depending on numbers around

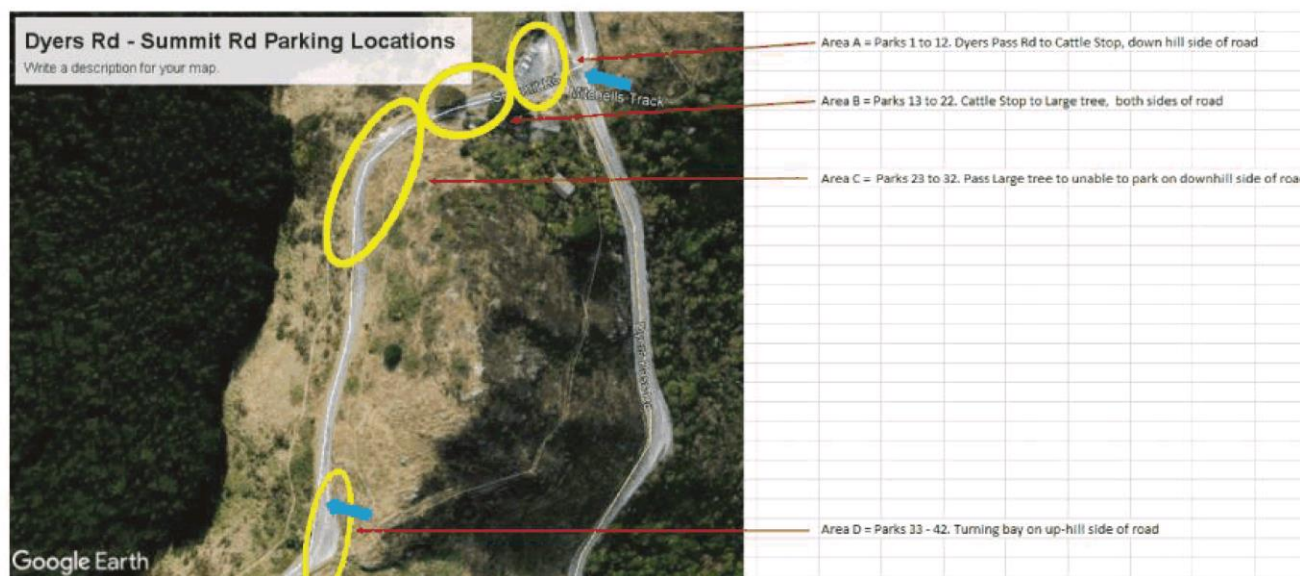
Who might be in the vehicles - can describe in different ways

- Local people familiar with the area – regular visits
 - Local people not familiar with Port Hills
 - Tourists
-
- ❖ Able adults / children
 - ❖ Less able adults / children w/out mobility card
 - ❖ Adults / children with mobility card

Approved Parking Restrictions at the Sign of the Kiwi – Nov 2018



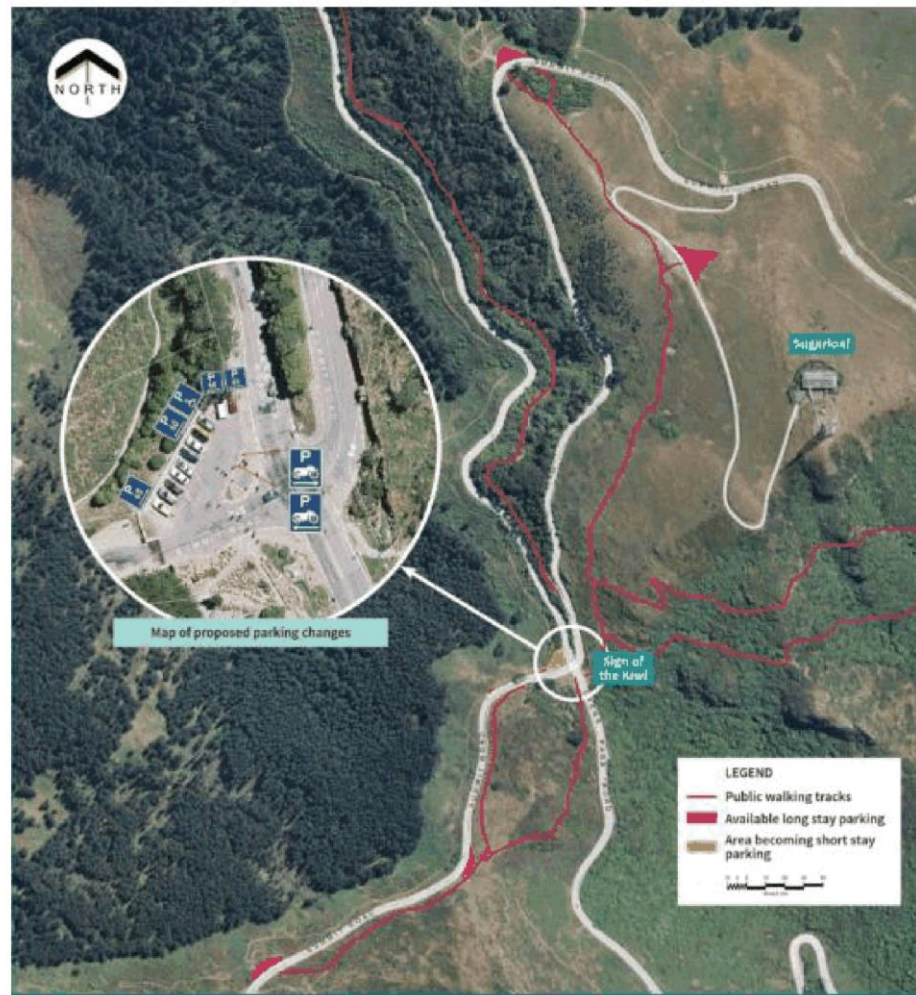
5



PARKING SURVEY AREAS

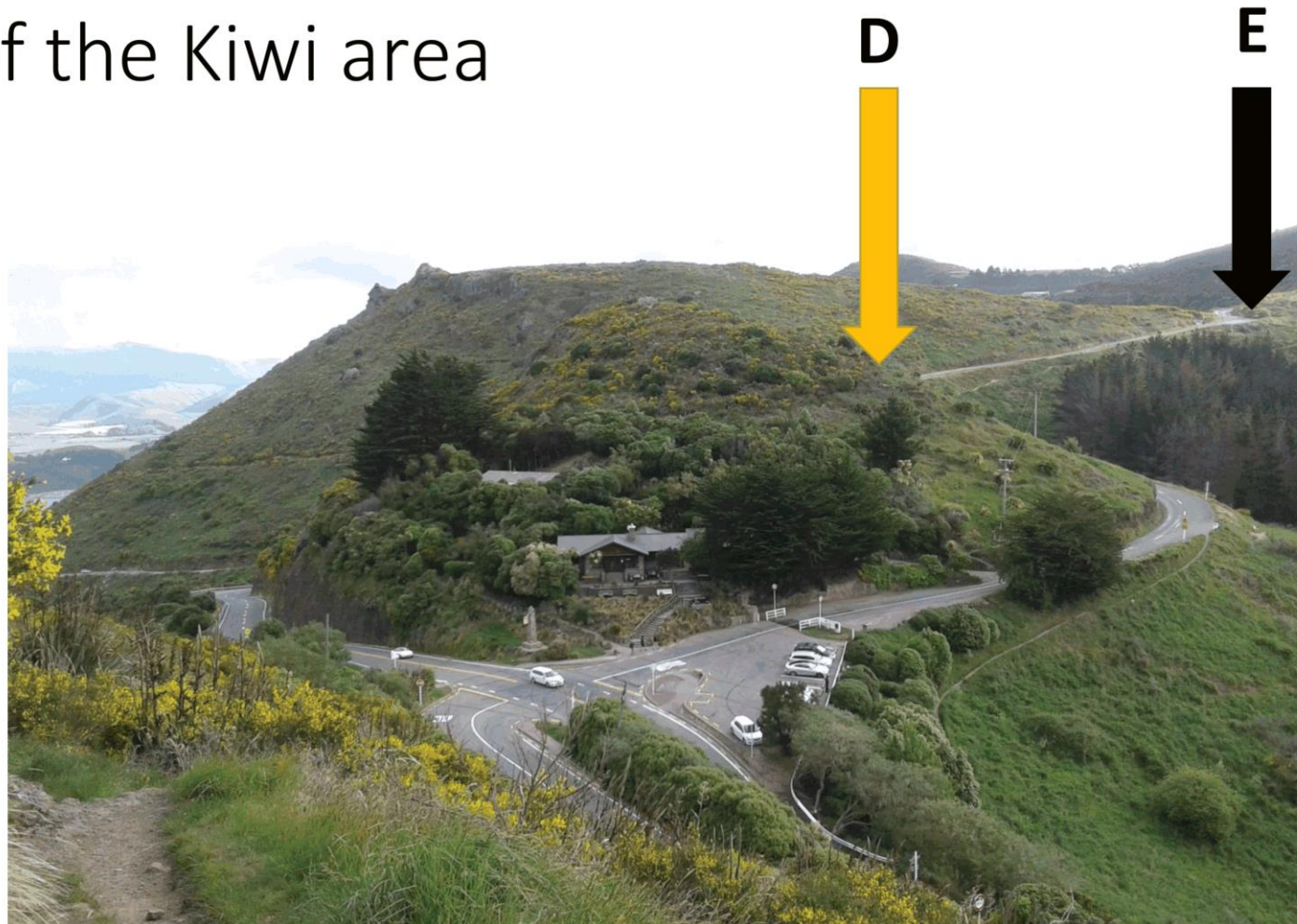
Attachment B Item 11

Query: Can 9 vehicles still park in area B now that there are yellow - - - both sides of the road where the tree is?
How many cars can park on each side of the road in Area B? Does area C begin the other side of the yellow - - - ?



Pedestrian paths marked in red, but without contour lines. Sugarloaf is steep, so next easiest parking spaces to Kiwi are west along Summit Road

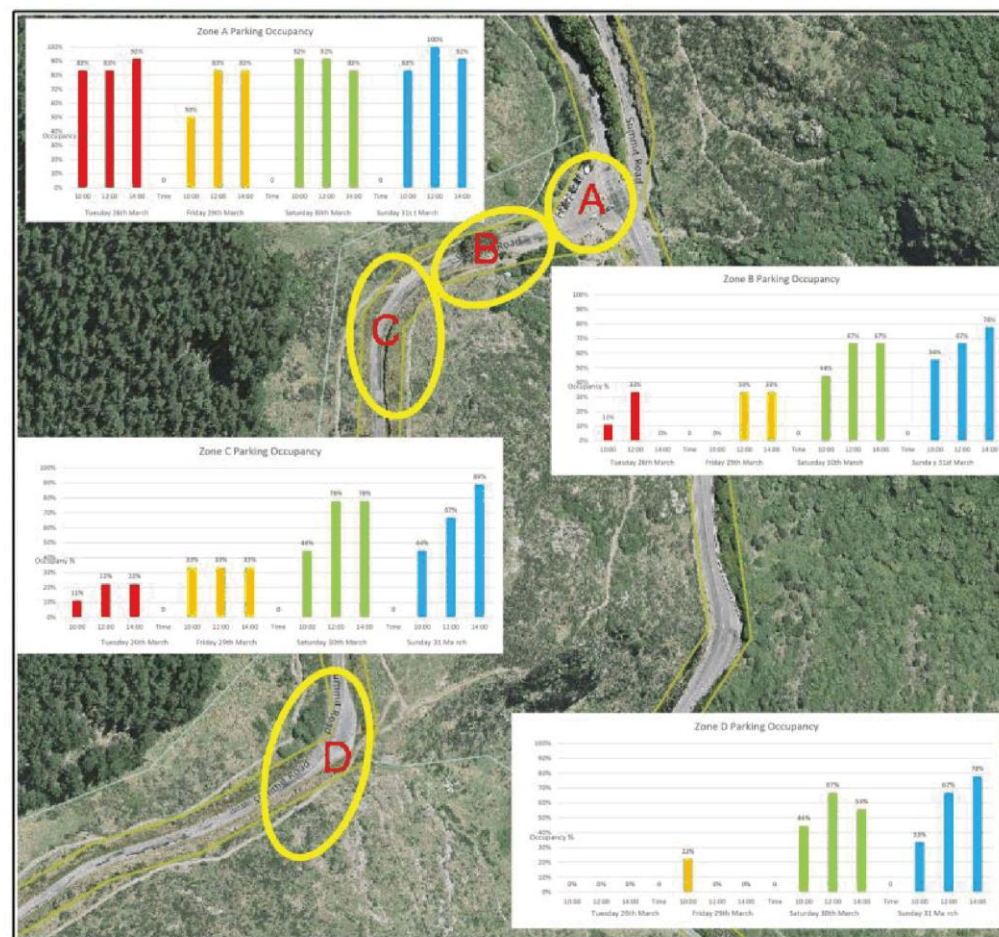
Sign of the Kiwi area



8

05 August 2019

City Council



Zone	Supply
A	12
B	9
C	9
D	9

KEY	
■	Tuesday 26th March
■	Friday 29th March
■	Saturday 30th March
■	Sunday 31st March

Summit Rd Parking Surveys 2019
Zones A - D

Christchurch
City Council

Information query

Zone A – When there are spaces, was the disabled space occupied?

Zone B – now has yellow - - - . Where are 9 parks? (2 Sign of Kiwi side of road, 5 between cattle stop and - - -? Are 9 possible?)

Zone C – all parks on city side of Summit Road. Are Sign of Kiwi café staff parking in Zone C?

Were any motorcycles in the two spaces allocated to them? No signage



Saturday Comparison

Attachment D Item 11

Observations do not

- Indicate the effect of seasonal change as only Sept and March days. Do not indicate weather on surveyed days
- Indicate whether disabled parking space used when not 100% capacity in area A
- No indication from this data whether the length of the restriction is optimal (does it need to be until 5pm?)
- Whether zone C is being used for café staff parking
- Realistically after A,B & C zones, best parking in zones D & E for access to Sign of Kiwi amenities as closer & more accessible than zones G, H & I

Just before midday on Thursday, 1st August 2019



11

Disabled parking

- Disabled park to be 3rd or 4th from cattle-stop to allow view while seated in vehicle
- Is it possible to have a disabled park that can be used by others for up to 5 or 10mins who may have just wanted to stop to look at view or for toilets?



12

Car parks accessibility – west on Summit Road

- 5 mins walk along path by road to first (9 spaces) or walk both ways on city side of road
- 10 mins walk along path by road to second (22 spaces) or walk both ways on city side of road
- Some steps just before Sign of Kiwi on path – erect handrail
- As mainly be used in Summertime retain natural character
- Superb views of harbour along path just before first parking place
- Will require seating along roadside / paths for those requiring a rest along way
- Safety / security concerns when less people in area



13



Area E

Parking
Spaces = 22

9% = 2
vehicles

Not seen
from Sign of
Kiwi or
Dyers Pass
Road

14



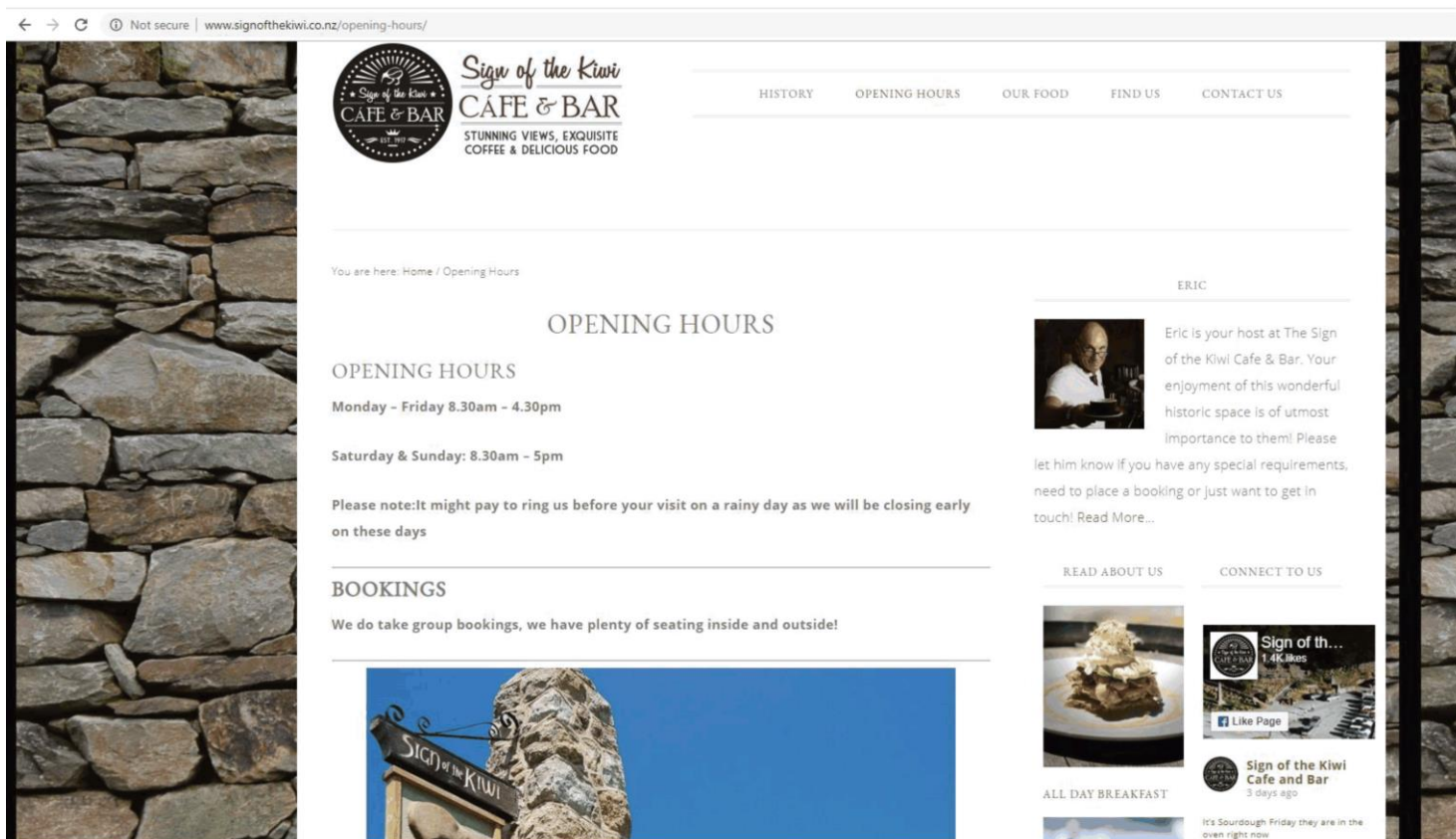
Area D

Parking
Spaces = 9

22% = 2
vehicles
67% = 6
vehicles

Not seen
from Sign of
Kiwi or
Dyers Pass
Road

15



The screenshot shows the website for Sign of the Kiwi Cafe & Bar. The header includes the logo and navigation links: HISTORY, OPENING HOURS, OUR FOOD, FIND US, and CONTACT US. The main content area is titled 'OPENING HOURS' and lists the following times: Monday - Friday 8.30am - 4.30pm, and Saturday & Sunday: 8.30am - 5pm. A note states: 'Please note: It might pay to ring us before your visit on a rainy day as we will be closing early on these days'. Below this is a 'BOOKINGS' section with the text: 'We do take group bookings, we have plenty of seating inside and outside!'. On the right side, there is a section for 'ERIC' with a photo and text: 'Eric is your host at The Sign of the Kiwi Cafe & Bar. Your enjoyment of this wonderful historic space is of utmost importance to them! Please let him know if you have any special requirements, need to place a booking or just want to get in touch! Read More...'. Below this are sections for 'READ ABOUT US' (featuring 'ALL DAY BREAKFAST') and 'CONNECT TO US' (featuring a Facebook post from 'Sign of the Kiwi Cafe and Bar' dated 3 days ago).

www.signofthekiwi.co.nz/opening-hours

Opening Hours

Mon – Fri 8:30am – 4:30pm

Sat – Sun 8:30am – 5pm

(closes early on rainy days)

**Current parking restriction is
9am – 5pm (can park longer
between 4pm – 10am)**

Harry Ell: A network of scenic
reserves along the Port Hills
with regularly spaced rest
houses for the refreshments
of walkers

Item 5.1

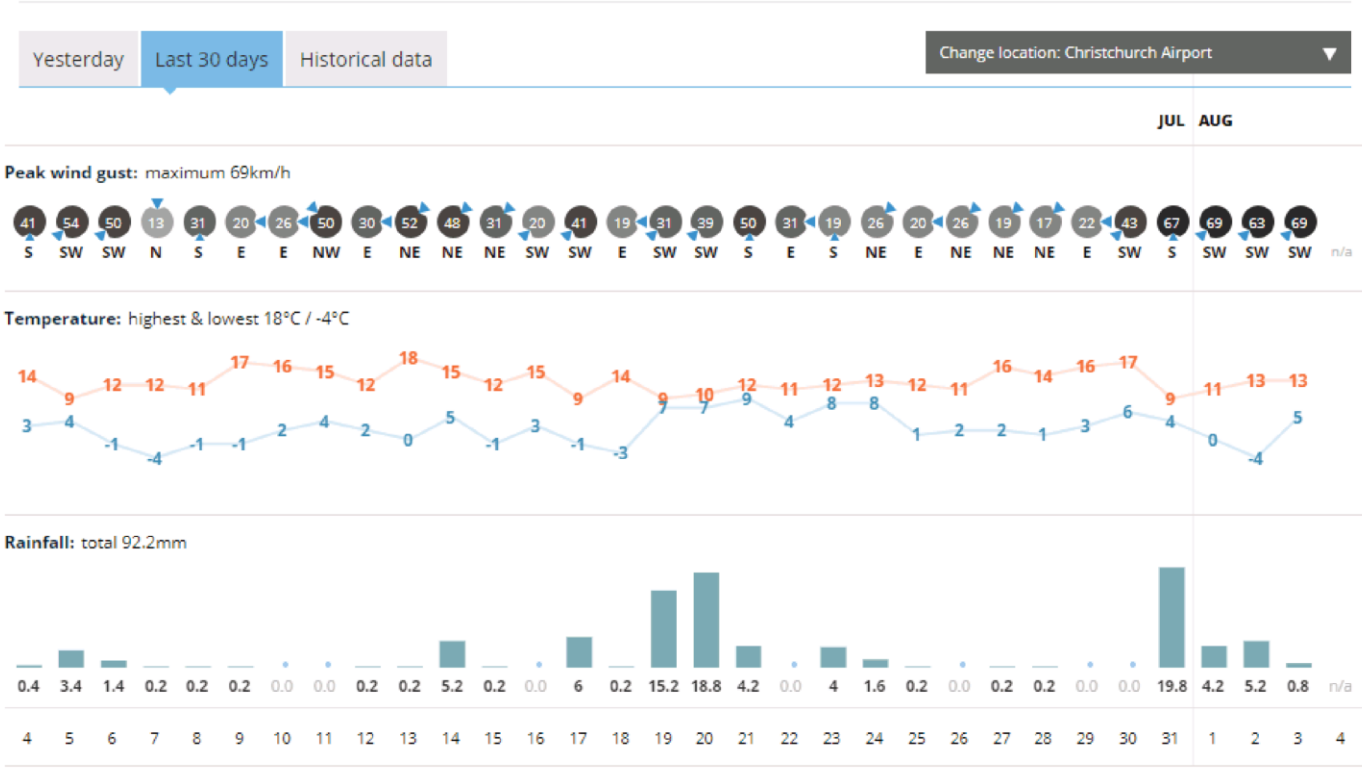
Attachment A



11:55am Thursday, 1st August, 2019
weather – windy but not raining

17

Past weather



Thursday, 1st August,
2019

Christchurch Airport

Wind: 69km/hr SW
Temp: 0 – 11C
Rainfall: 4.2mm

Signage at car park – zone A

I'm just a little carpark and sometimes more people want to park here than there is space. It all depends on the seasons and the weather. If I look busy and you can walk 5 or 10 minutes, please consider parking at Parks D & E. D is only 5mins walk and there are great views over the harbour. E is a much bigger space, but will take



10 minutes to walk to the Sign of Kiwi, and you can stop and look at the views at D. It will be well worth it. There is a seat for those who need a rest.

Not everyone can walk that far, so if you can walk and I'm nearly full please park elsewhere and walk so those less able can use this space. If the weather is lousy and I've got lots of room, you're free to park here too.

19

Please consider:

- P60 only in months October to March and only to 4:30pm so parents can park there if drive children up straight after school
- There are many who do not qualify for a mobility card, but who cannot walk 5 minutes on the hills.
- Sign at car park asking more able to park elsewhere and walk when car park busy
- Is it possible to permit others to park for just 10mins in disabled park?
- Roadside path required from parks D & E as present paths include steps. Seats along way required. Consider also where mountain bikers enter and exit Summit Road
- Possibility in future of CCTV being used to issue parking tickets for revenue

20

Other car parks accessibility – Sugarloaf car park

- 15 minutes walk (30 car spaces)
- Uninterrupted views of the city
- View of city, mountains, sea and estuary
- Requires ability to manage rocky steps
- Natural path with exposed volcanic rock and many steps
- Signage needs improving especially from car park



22

Coronation Hill Track round 2nd bluff



← Dangerous
rocks – path
requires closing
until made safe

Overgrown
path
requires
trimming →





11:55am Thursday, 1st August, 2019
weather – windy but not raining although had
been

24

Consideration of parking nearby

- Are there plans to restrict other nearby parking?
- Will parking on the other side of cattle-stop be affected? (time restriction, parking formally marked – zone B
- Will parking along roadside continue to be permitted – zone C? Are there safety concerns?
- Signage from other parking areas – no sign at Sugarloaf carpark and path is below carpark so not seen from where park
- Paths left in present state, close to natural as possible - not upgraded to remove steps, metres wide, loose shingle, remove grass, wooden edging

25

Proposal P60 every day from 8am – 6pm

- This allows to park longer provided left by 9am and arrive after 5pm
- Very busy days – 60 minute parking restriction will still leave insufficient space for all who wish to park, even for less than 60 minutes
- Not possible to go for a walk and café. Café may suffer less patronage
- Always conscious of the time you have – anxiety and stress
- Times when very few people around forced to park away to a less visible area than this park is, while this parking area is 99% not full. Will be more frequent than when full.
- Person / vehicle safety, less convenient
- In the middle of winter, covers through to sunset, only one hour after dawn

Time required for activities

- Look at the view – 10 minutes
- Eat at café – 10 minutes to buy ice cream, much longer for café
- Walk circuit of Coronation Hill – 30 minutes
- Walk a circuit of Sugarloaf – 70 minutes
- Longer walking / running – 1+ hours
- Combination – short walk & café – 1 ½ to 2 hrs
- Longer walking / running & café 1 ½ + hours

The Winter Tale – William Shakespeare



• Jog on, Jog on, the footpath way •
And merrily hent the stile-a •
A merry heart goes all the day •
Your sad ties in a mile a •

Harry Ell: A network of scenic reserves along the Port Hills with regularly spaced rest houses for the refreshments of walkers

Attachment A

29

Possible effects of P60 restriction from 8am to 6pm

- People deterred from parking here, just in case their walk / run takes longer than intended.
- No time to visit café after a walk / run
- Car park near empty but forced to park elsewhere
- Changes – automatic ticketing, even when carpark near empty
- What should have been an enjoyable day in the Port Hills becomes stressful because of a parking fine

4. Key points

4.2 The following feasible options have been considered

Option 1: P60 as described

Option 2: Do nothing

Why not consider:

- Making people aware – asking for consideration to self-regulate
- P120 but only on busy days and times in summer

Alternatives

Parking permitted for longer, only days that are deemed likely to be busy, less of the day

- On really busy days still no spaces in car park because all those who will be less than an hour will park there
- Those less able to walk a distance cannot park and walk to cafe
- Councils tend to cover more days / times than are necessary
- Cannot know in advance of putting up notices, what the weather will be like (nor-west Sunday in Winter, wet windy day in Summer)
- May have only intended to walk / run for so long but enjoying it and would have gone further, but have to turn back to leave car park in case get ticket.
- Denied parking in car park with better personal and vehicle safety when car park is empty or nearly empty
- Not able to change into dry, warm clothes after long walk / run before getting into car
- Always conscious of the time / stress over how long it will take to get back to vehicle especially if doing a circuit

Polite Notice – Self regulate Option One

Design a notice pointing out that sometimes this car park is really busy, but at other times there is plenty of space. Ask for consideration on busy days, especially if you are fit and able to park and walk from nearby car parks (marked on a map with times to walk) which will be a more enjoyable experience too. But welcome those who are less able to walk and for those who have very limited time to stop.

When not busy, if concerned for personal or vehicle safety, or convenience, park there.

Write notice so it's appealing, perhaps witty and fun to read.

But finish that if the car park is not self-regulated, parking restrictions will be imposed.