

## Innovation and Sustainable Development Committee AGENDA

---

### Notice of Meeting:

An ordinary meeting of the Innovation and Sustainable Development Committee will be held on:

**Date:** Wednesday 26 June 2019  
**Time:** 9am  
**Venue:** Committee Room 1, Level 2, Civic Offices,  
53 Hereford Street, Christchurch

---

### Membership

Chairperson	Councillor Vicki Buck
Deputy Chairperson	Councillor Sara Templeton
Members	Councillor Jimmy Chen
	Councillor Mike Davidson
	Councillor Anne Galloway
	Councillor James Gough
	Councillor Glenn Livingstone
	Deputy Mayor Andrew Turner

---

20 June 2019

### Principal Advisor

Brendan Anstiss  
General Manager Strategy &  
Transformation  
Tel: 941 8472

Aidan Kimberley  
Committee and Hearings Advisor  
941 6566  
aidan.kimberley@ccc.govt.nz  
[www.ccc.govt.nz](http://www.ccc.govt.nz)

Note: The reports contained within this agenda are for consideration and should not be construed as Council policy unless and until adopted. If you require further information relating to any reports, please contact the person named on the report.

**To view copies of Agendas and Minutes, visit:**

<https://www.ccc.govt.nz/the-council/meetings-agendas-and-minutes/>

# Strategic Framework

**The Council's Vision** – Christchurch is a city of opportunity for all.

Open to new ideas, new people and new ways of doing things – a city where anything is possible.

## Whiria ngā whenu o ngā papa Honoa ki te maurua tāuikiuki

Bind together the strands of each mat  
And join together with the seams of respect  
and reciprocity.

The partnership with Papatipu Rūnanga  
reflects mutual understanding and respect,  
and a goal of improving the economic,  
cultural, environmental and social  
wellbeing for all.

### Overarching Principle

Partnership – Our  
people are our taonga  
– to be treasured and  
encouraged. By working  
together we can create  
a city that uses their  
skill and talent, where  
we can all participate,  
and be valued.

### Supporting Principles

Accountability	Collaboration
Affordability	Prudent Financial Management
Agility	Stewardship
Equity	Wellbeing and resilience
Innovation	Trust

## Community Outcomes

What we want to achieve together as our city evolves

### Strong communities

Strong sense of  
community  
Active participation in  
civic life  
Safe and healthy  
communities  
Celebration of our  
identity through arts,  
culture, heritage and  
sport  
Valuing the voices of  
children and young  
people

### Liveable city

Vibrant and thriving  
central city, suburban  
and rural centres  
A well connected and  
accessible city  
Sufficient supply of, and  
access to, a range of  
housing  
21st century garden city  
we are proud to live in

### Healthy environment

Healthy waterways  
High quality drinking  
water  
Unique landscapes and  
indigenous biodiversity  
are valued  
Sustainable use of  
resources

### Prosperous economy

Great place for people,  
business and investment  
An inclusive, equitable  
economy with broad-  
based prosperity for all  
A productive, adaptive  
and resilient economic  
base  
Modern and robust  
city infrastructure and  
community facilities

## Strategic Priorities

Our focus for improvement over the next three years and beyond

Enabling active citizenship and connected  
communities

Maximising opportunities to develop a vibrant,  
prosperous and sustainable 21st century city

Climate change  
leadership

Informed and proactive  
approaches to natural  
hazard risks

Increasing active, public  
and shared transport  
opportunities and use

Safe and sustainable  
water supply and  
improved waterways

---

**INNOVATION AND SUSTAINABLE DEVELOPMENT COMMITTEE - TERMS OF REFERENCE**

<b>Chair</b>	Councillor Buck
<b>Membership</b>	Deputy Mayor Turner, Councillor Davidson, Councillor Gough, Councillor Livingstone, Councillor Swiggs, Councillor Templeton
<b>Quorum</b>	Half of the members if the number of members (including vacancies) is even, or a majority of members if the number of members (including vacancies) is odd.
<b>Meeting Cycle</b>	Monthly
<b>Reports To</b>	Council

***Areas of Focus***

The focus of the Innovation and Sustainable Development Committee is driving the concept of innovation, as in the City vision of a “City of Opportunity, where anything is possible” and to do so in ways that may be experimental and different.

The Committee considers and reports to Council on issues and activities relating to:

- Strategies and priorities in relation to innovation and sustainable development.
- Climate change and sustainability initiatives such as electric vehicles, carbon reduction and waste minimisation.
- City Promotion initiatives such as Christchurch Narrative and Visitors Strategy.
- Innovative or disruptive strategies and programmes, including Smart Cities programme of work.
- Innovative approaches to the delivery of issues that often go across levels of government.
- Allocation of funds related to the innovation and sustainability sector, including a new Innovation and Sustainability Fund.
- Council’s Brand and Communications strategies.

**Delegations**

- The Council delegates to the Innovation and Sustainable Development Committee the authority to make decisions on applications to the Enliven Places Projects Fund of more than \$15,000.
- The Innovation and Sustainable Development Committee has the delegated authority to approve Applications to the Innovation and Sustainability Fund seeking between \$10,001 and \$100,000 and Council approval will be required for Committee funding recommendations over \$100,001.
  - Applications up to and including \$10,000 can be made by an individual, however applications from legal entities are preferred.
  - Applicants seeking more than \$10,001 must be a legal entity registered in New Zealand.
  - The following resolution was passed at the Council meeting of 28 September 2017 and 28 June 2018.

## 42. Innovation and Sustainability Fund Establishment

### Council Resolved CNCL/2017/00001

That the Council:

1. Approve the creation of an Innovation and Sustainability Fund ("Fund") for 2017/18 funded by:
  - a. \$400,000 from the Capital Endowment Fund as provided in the 2017/18 Annual Plan; and
  - b. Additional funding from donations in lieu of the Councillors Director Fees as provided for in the Policy for the Appointment of Directors to Council Organisations (adopted 28 September 2017, reference CNCL/2017/00002).
2. Approve the funding in the draft 2018-28 Long Term Plan for future years until 2025:
  - a. \$400,000 per year from the Capital Endowment Fund for the first three years; and
  - b. additional funding from donations in lieu of the Councillors Director Fees as provided for in the Policy for the Appointment of Directors to Council Organisations.
3. Delegate to:
  - a. the Head of Urban Design, Regeneration and Heritage, the delegated authority to approve Innovation and Sustainability Grant applications of up to and including \$10,000 in accordance with the Terms Of Reference for the Fund; and
  - b. the Innovation and Sustainable Development Committee, the delegated authority to approve Innovation and Sustainability Grant applications between \$10,001 and \$100,000, in accordance with the Terms Of Reference for the Fund; and
  - c. the Head of Urban Design, Regeneration and Heritage the delegated authority to determine and carry out the administration requirements for this Fund, and to enter into Funding Agreements with Grant recipients.
4. Approve the Fund's Terms of Reference, as amended by these resolutions (Attachment A of the report).
5. Approve that any unallocated funds remaining at financial year end (30 June annually) will be recognised as committed, but unallocated on the Balance Sheet and added to the total funding available for allocation.

Councillor Buck/Councillor Scandrett

**Carried**

### Council Resolved CNCL/2018/00130

That the Council:

1. Approve the following amendment to the Innovation and Sustainability Fund's Terms of Reference (word changes in italics):
  - a. Applications seeking between \$10,001 and \$100,000 will be delegated to the Innovation and Sustainable Development Committee, *and Council approval will be required for Committee funding recommendations over \$100,001.*
2. Delegate to the Head of Urban Design, Regeneration and Heritage the decision to publicly release this report when there is no longer any commercial sensitivity relating to any of the applications.

Councillor Buck/Councillor Davidson

**Carried**

---

Part A	Matters Requiring a Council Decision
Part B	Reports for Information
Part C	Decisions Under Delegation

---

## TABLE OF CONTENTS

C	1.	Apologies.....	6
B	2.	Declarations of Interest .....	6
C	3.	Confirmation of Previous Minutes.....	6
B	4.	Public Forum.....	6
B	5.	Deputations by Appointment.....	6
B	6.	Presentation of Petitions .....	6

## STAFF REPORTS

A	7.	Climate Change Programme - Consultation on Draft Targets.....	13
C	8.	Update on Extinction Rebellion Deputation Request .....	21
C	9.	Update from ChristchurchNZ on the Antarctic Gateway Strategy.....	27
C	10.	Suburban Regeneration Biannual Report to end of March 2019 .....	37
C	11.	Smart Christchurch Programme Update .....	47
C	12.	Enliven Places Projects Fund - Grant Approval - Little Andromeda 2019 .....	69
C	13.	Resolution to Exclude the Public.....	76

## 1. Apologies

At the close of the agenda no apologies had been received.

## 2. Declarations of Interest

Members are reminded of the need to be vigilant and to stand aside from decision making when a conflict arises between their role as an elected representative and any private or other external interest they might have.

## 3. Confirmation of Previous Minutes

That the minutes of the Innovation and Sustainable Development Committee meeting held on [Monday, 20 May 2019](#) be confirmed (refer page 7).

## 4. Public Forum

A period of up to 30 minutes may be available for people to speak for up to five minutes on any issue that is not the subject of a separate hearings process.

It is intended that the public forum session will be held at <Approximate Time>

### 4.1 Whākōkī

Bridget Frame and Michael Toothill will speak on behalf of Whākōkī regarding, a joint venture between Space Craft Systems and Kilmarnock Enterprises, who together bring a shared vision about Improving lives by empowering people with the tools needed to build thriving communities

### 4.2 Canopy of Lights – GHD Smart Seeds Project Presentation

Shane Sword will speak on behalf of the project team regarding their recent involvement in the challenge.

### 4.3 Food Repurposing

Heidi Rada will speak regarding repurposing food and employing our disadvantaged people in the city

## 5. Deputations by Appointment

There were no deputations by appointment at the time the agenda was prepared.

## 6. Petitions

There were no petitions received at the time the agenda was prepared.

---

## Innovation and Sustainable Development Committee OPEN MINUTES

---

**Date:** Monday 20 May 2019  
**Time:** 1pm  
**Venue:** Council Chamber, Level 2, Civic Offices,  
53 Hereford Street, Christchurch

---

**Present**

Chairperson	Councillor Vicki Buck
Deputy Chairperson	Councillor Sara Templeton
Members	Councillor Jimmy Chen
	Councillor Mike Davidson
	Councillor Anne Galloway
	Councillor James Gough
	Councillor Glenn Livingstone
	Deputy Mayor Andrew Turner

---

20 May 2019

**Principal Advisor**

Brendan Anstiss  
General Manager Strategy &  
Transformation  
Tel: 941 8472

Sarah Drummond  
Committee and Hearings Advisor  
941 6262  
sarah.drummond@ccc.govt.nz  
[www.ccc.govt.nz](http://www.ccc.govt.nz)

To view copies of Agendas and Minutes, visit:  
[www.ccc.govt.nz/the-council/meetings-agendas-and-minutes/](http://www.ccc.govt.nz/the-council/meetings-agendas-and-minutes/)

**Part A Matters Requiring a Council Decision**

**Part B Reports for Information**

**Part C Decisions Under Delegation**

---

The agenda was dealt with in the following order.

**1. Apologies**

**Part C**

**Committee Resolved ISDC/2019/00013**

That the apologies from Deputy Mayor Turner for absence and Councillor Livingstone for early departure be accepted.

Councillor Gough/Councillor Galloway

**Carried**

**2. Declarations of Interest**

**Part B**

Councillor Buck declared an interest in Item 11.

**3. Confirmation of Previous Minutes**

**Part C**

**Committee Resolved ISDC/2019/00014**

That the minutes of the Innovation and Sustainable Development Committee meeting held on Wednesday, 27 March 2019 be confirmed.

Councillor Davidson/Councillor Templeton

**Carried**

**4. Public Forum**

**Part B**

**4.2 350.org Christchurch**

Charles Drace spoke on behalf of 350.org Christchurch regarding waste minimisation and tree planting in relation to climate change.

**Part B**

That the Innovation and Sustainable Development Committee:

1. Thanks Mr Drace for his presentation.

**4.3 Electric Air**

Gary Freedman spoke on behalf of Electric Air regarding bringing a demonstration electric aircraft to Christchurch, with a view to beginning their use to reduce reliance on fossil fuel.

**Part B**

That the Innovation and Sustainable Development Committee:

1. Thanks Mr Freedman for his presentation.

**4.1 Nicola Wilkie**

Nicola Wilkie will speak to the Committee.

This public forum did not take place

## **5. Deputations by Appointment**

**Part B**

**5.1 Extinction Rebellion**

Julie Downard spoke on behalf of Extinction Rebellion regarding declaring a climate change emergency.

**Part B**

That the Innovation and Sustainable Development Committee:

1. Thanks Ms Downard for their deputation.

**5.2 Christchurch School Strike 4 Climate Team**

Mia Sutherland and Ciara Foley spoke on behalf of Christchurch School Strike 4 Climate Team regarding Climate Change.

**Part B**

That the Innovation and Sustainable Development Committee:

1. Thanks Ms Sutherland and Ms Foley for their deputation.

## **6. Presentation of Petitions**

**Part B**

There was no presentation of petitions.

Councillor Gough left the meeting at 1.40pm during presentation of item 5 and returned at 1.43pm

## 7. Information on declaring a climate emergency

### Committee Resolved ISDC/2019/00015

#### Part C

1. That the Innovation and Sustainable Development Committee:
  - a. Receive this report and consider whether to recommend that Council declares a climate emergency.

Councillor Chen/Councillor Gough

Carried

## 8. Declaration of a Climate Change and Ecological Emergency

### Committee Comment

1. The Committee received several deputations to this report at the start of the meeting. Following the deputations the Committee received the information report (Attachment A) from Council Officers regarding declaring a climate emergency and discussed this and the Chairpersons recommendations below.

### Chairperson's Recommendations

That the Innovation and Sustainable Development Committee Recommends that the Council Resolves that:

1. Christchurch joins with over 500 other cities and districts in declaring a climate and ecological emergency.
2. Climate change leadership and safe and sustainable water be the overarching objectives of our key Strategic Documents including, but not limited to the Long Term Plan/Infrastructure and Finance Strategies.
3. A question be included in the annual resident's survey on Council's action on climate change.
4. The Christchurch City Council approach other major cities to initiate cooperative work on climate and ecological change work.
5. The Christchurch City Council recognises that action is required and challenges other local authorities and Central Government to recognise the climate change emergency and act accordingly.

Notes that the following work on climate change is already underway;

- Work on a city-wide target for carbon net-neutrality is underway with an updated Climate Strategy due in 2019.
- Climate change impacts are now considered in all Christchurch City Council Reports.
- The City Council's vehicle fleet has been electrified through a shared fleet with Yoogo.
- The City Council procurement policy has been altered to include sustainability as a high priority.
- The Major Cycleway Routes are now being built across the city and are encouraging active transport and the central city is being designed to encourage active transport.

- An eco-designer is available to ensure people can get help with rebuild, or build of housing and has supported commercial buildings to be more sustainable.
- Sustainability is already included as an objective by the Christchurch City Council Holdings Limited (CCHL) group of companies.

**Committee Decided ISDC/2019/00016**

**Part A**

That the Innovation and Sustainable Development Committee Recommends that the Council Resolves that:

1. Christchurch joins with other cities and districts in declaring a climate and ecological emergency.
2. Climate change leadership and safe and sustainable water should be the overarching objectives of our key Strategic Documents including, but not limited to the Long Term Plan/Infrastructure and Finance Strategies.
3. A question be included in the annual resident's survey on Council's action on climate change.
4. The Christchurch City Council approach other major cities to initiate cooperative work on climate and ecological change work.
5. The Christchurch City Council recognises that action is required and challenges other local authorities and Central Government to recognise the climate change emergency and act accordingly.
6. Requests further advice from Council Officers based on the deputation and requests presented by Extinction Rebellion, to be reported to the June and July 2019 Innovation and Sustainable Development Meetings.

Notes that the following work on climate change is already underway;

- Work on a city-wide target for carbon net-neutrality is underway with an updated Climate Strategy due in 2019.
- Climate change impacts are now considered in all Christchurch City Council Reports.
- The City Council's vehicle fleet has been electrified through a shared fleet with Yoogo.
- The City Council procurement policy has been altered to include sustainability as a high priority.
- The Major Cycleway Routes are now being built across the city and are encouraging active transport and the central city is being designed to encourage active transport.
- An eco-designer is available to ensure people can get help with rebuild, or build of housing and has supported commercial buildings to be more sustainable.
- Sustainability is already included as an objective by the Christchurch City Council Holdings Limited (CCHL) group of companies.

Councillor Davidson/Councillor Livingstone

**Carried**

Councillor Gough requested that his vote against the recommendation be recorded.

**9 Resolution to Exclude the Public**  
**Committee Resolved ISDC/2019/00017**

**Part C**

That at 2.19pm the resolution to exclude the public set out on pages 21 to 22 of the agenda be adopted.

Councillor Livingstone/Councillor Galloway

**Carried**

**The public were re-admitted to the meeting at 2.37pm.**

**Meeting concluded at 2.38pm.**

**CONFIRMED THIS 26<sup>th</sup> DAY OF JUNE 2019**

**COUNCILLOR VICKI BUCK  
CHAIRPERSON**

## 7. Climate Change Programme - Consultation on Draft Targets

Reference: 19/643803

Presenter(s): Emma Davis, Head of Strategic Policy

### 1. Purpose of Report

- 1.1 The purpose of this report is to seek a recommendation from the Innovation and Sustainability Committee to the Council to approve that the consultation document on setting emissions targets for the Christchurch District be released for public consultation.

### 2. Executive Summary

- 2.1 The Council resolved **CNCL/2019/00063** at its meeting on 11 April to, recognising the urgency of the climate crisis, establish by September 2019 a net carbon neutral target for Christchurch as a whole.
- 2.2 The Council has instigated a climate change programme that builds upon the action that Council has taken on climate change to date. This programme of work includes developing a climate change strategy with reference to the existing Climate Smart Strategy and developing the action plans to support this. The full strategy development will be undertaken in the FY19/20 with the first stage being to establish an emissions target for the Christchurch District.
- 2.3 An emissions target consultation document has been prepared, for which approval for public consultation is being sought.

### 3. Staff Recommendations

That the Innovation and Sustainable Development Committee recommend that Council:

1. Approve that the consultation document on emissions targets (Attachment A), be released for public consultation.

### 4. Context/Background

#### Opportunity

- 4.1 The Christchurch City Council is committed to climate change leadership. The evidence is clear – greenhouse gas emissions are causing unprecedented increases in global temperatures, and we must rapidly cut our emissions to prevent further warming and disruption in the future.
- 4.2 The emissions target consultation document provides the background on greenhouse gas emissions including the Christchurch Districts emissions profile. This shows that in the 2016/2017 financial year, transportation was the largest contributor at 53%, followed by stationary energy (from homes and buildings) at 22%, agriculture at 10.5%, waste at 9% and industry at 4.7%.
- 4.3 The discussion document seeks feedback on how quickly or boldly we should aim to reduce emissions across our District. The proposal sets out the approach by central government (net zero emissions of GHG, other than biogenic methane by 2050) or a more ambitious pathway (e.g. net zero emissions of GHG, other than biogenic methane by 2040). The proposal also

presents an additional target of a 50% reduction in GHG emissions (other than biogenic methane) district wide by 2030 (from 2016/2017 baseline levels).

- 4.4 The consultation is designed to seek the community's feedback and views on setting an emissions target for the Christchurch District.

### Strategic Alignment

- 4.5 This report is aligned with the Council's strategic priority, Climate Change Leadership and this aligns with all the Community Outcomes.
- 4.6 This report supports the [Council's Long Term Plan \(2018 - 2028\)](#):

#### 4.6.1 Activity: Strategic Planning and Policy

- Level of Service: 17.0.1.7 Advice to Council on high priority policy and planning issues that affect the City. Advice is aligned with and delivers on the governance expectations as evidenced through the Council Strategic Framework - Policy advice to Council on emerging issues.

### Assessment of Significance and Engagement

- 4.7 The decision in this report is of low significance in relation to the Christchurch City Council's Significance and Engagement Policy.
- 4.8 The level of significance was determined by the fact that the decision to publically consult is not a statutory one, as the setting of targets is not a statutory decision.

## 5. Community Views and Preferences

- 5.1 A sentiment survey was conducted in May which asked residents about their views on climate change, which showed that the majority of respondents perceive climate change as extremely important. There has also been some initial engagement with an external technical advisory group on the broader climate change strategy to inform its development.
- 5.2 The next step, subject to Council approval will be to undertake public consultation on setting an emissions target for the Christchurch District council.

## 6. Legal Implications

- 6.1 There is not a legal context, issue or implication relevant to this decision. This report has not been reviewed and approved by the Legal Services Unit

## 7. Risks

- 7.1 The risk is that without including the targets within a broader strategy for consultation, there may be a missed opportunity to position the targets within a broader context linked to overall goals and principles. This risk can be managed by giving visibility on our wider programme of work.

## 8. Next Steps

- 8.1 Once the consultation document has been approved for public consultation, the document will be prepared for publication.
- 8.2 It is anticipated that public consultation would begin in early to mid-July. Submissions on the document will be heard by the Innovation and Sustainability Development Committee.

## Attachments

No.	Title	Page
A <a href="#">↓</a>	Have your say: Emissions Target DRAFT	16

## Confirmation of Statutory Compliance

Compliance with Statutory Decision-making Requirements (ss 76 - 81 Local Government Act 2002).

(a) This report contains:

- (i) sufficient information about all reasonably practicable options identified and assessed in terms of their advantages and disadvantages; and
- (ii) adequate consideration of the views and preferences of affected and interested persons bearing in mind any proposed or previous community engagement.

(b) The information reflects the level of significance of the matters covered by the report, as determined in accordance with the Council's significance and engagement policy.

## Signatories

<b>Authors</b>	Carey Graydon - Senior Policy Analyst Emma Davis - Head of Strategic Policy
<b>Approved By</b>	Brendan Anstiss - General Manager Strategy and Transformation

## Have your say: Emissions Target

The Christchurch City Council is committed to climate change leadership. The evidence is clear – greenhouse gas emissions are causing unprecedented increases in global temperatures, and we must rapidly cut our emissions to prevent further warming and disruption in the future.

Christchurch's greenhouse gas emissions are only a small part of total global emissions, but New Zealand's per capita emissions are among the highest in the world. Countries which individually emit less than 1% of global totals, collectively contribute significantly to total emissions. This means we all have an important part to play in limiting warming.

We are currently in the process of developing our district's climate change strategy to ensure it reflects community aspirations for Christchurch. Our district includes Christchurch City and Banks Peninsula. As part of this work, we want to hear your views on what targets we should be adopting. Do we go with the proposed national targets, or do you want us to be more ambitious? We want to hear your views.

### Graphics:

- **What is our current footprint?**  
*The Christchurch district currently produces far more greenhouse gas emissions than we offset. During the 2016/2017 June financial year (our baseline year), Christchurch emitted an estimated 2,485,335 tonnes of carbon dioxide equivalent (t CO<sub>2</sub>e) equating to 6.6 t CO<sub>2</sub>e per person. This is lower than Auckland (7.9 t CO<sub>2</sub>e) and Dunedin (11.4 t CO<sub>2</sub>e), but more than Wellington (5.7 t CO<sub>2</sub>e). Forestry in Christchurch resulted in sequestration of an estimated 362,679 t CO<sub>2</sub>e, which reduced Christchurch's net greenhouse gas emissions to 2,122,656 t CO<sub>2</sub>e.<sup>1</sup>*
- **Where do our greenhouse gas emissions come from?**  
*A breakdown of our emissions in the 2016/2017 financial year found that transportation was the largest contributor at 53%, followed by stationary energy (from homes and buildings), at 22%, agriculture at 10.5%, waste at 9% and industry at 4.7%.*

### What are the proposed targets for New Zealand?

If passed into law, the Government's Climate Change Response (Zero Carbon) Amendment Act will contain the national targets for New Zealand to collectively meet.

The government's proposed targets can be summarised as:

- *net zero emissions of greenhouse gases by 2050, other than biogenic methane (then remaining at net zero for each subsequent year),*
- *by 2030, gross annual emissions of biogenic methane are 10% less than 2017 emissions; and are at least 24% to 47% less than 2017 emissions by 2050 (and for each subsequent year)<sup>2</sup>*

<sup>1</sup> Christchurch Community Carbon Footprint 2016/17 - AECOM report available here: our community carbon footprint <https://ccc.govt.nz/environment/climate-change/>

<sup>2</sup> Based on Climate Change Response (Zero Carbon) Amendment Act targets. Read the entire Bill here: <https://www.parliament.nz/en/pb/bills-and-laws/bills-digests/document/52PLLaw25931/climate-change-response-zero-carbon-amendment-bill-2019>

The government's Zero Carbon Bill proposes treating biogenic methane (largely emitted by the agriculture and waste sectors) differently from other greenhouse gases. Although it has stronger warming effects than carbon dioxide, methane is a relatively 'short lived' gas (doesn't last as long in the atmosphere) compared with other greenhouse gases. It remains in the atmosphere for about 12 years, whereas carbon dioxide can remain in the atmosphere for thousands of years.

#### Reductions are needed in all areas

New Zealand needs to reduce its emissions drastically across all areas in order to reach this net zero emissions target. This will require a number of different approaches, and the support of government, business, and the community. As a country, we will need to reimagine the way we travel, generate energy, produce food, manage waste, develop agriculture, build infrastructure, and develop our towns and cities. We can also 'offset' our emissions through carbon sequestration, or carbon capture. This means capturing carbon dioxide from the atmosphere and storing it using trees, wetlands and soils.

The Council recognises the importance of reducing greenhouse gas emissions as quickly as possible, while continuing to support the wider needs of the community. This means we need to manage the speed at which we reduce greenhouse gas emissions to enable there to be time for a just and equitable transition to a low carbon economy.

If our cuts are too drastic before we undertake detailed analysis, there is the risk of not understanding potentially harmful impacts on the community and the economy. However, if we act too slowly to reduce our emissions, we won't be taking the necessary action to limit warming to 1.5°C, may miss opportunities to adopt useful new technologies, and won't be leading on climate action.

#### Should we be more ambitious?

We have the option of setting more ambitious targets for emissions reductions (along with more ambitious actions) in the Christchurch district if we have community support for this kind of approach.

Some people believe the government's targets are too conservative, and that we should make the necessary sacrifices and lifestyle changes to reduce emissions faster. This could include getting out of our cars, or travelling less, investing in new technology earlier, reducing meat in our diets, planting more trees, and investing in more efficient homes and buildings sooner than would be necessary to achieve the government's proposed targets.

One way we could be more ambitious than the national targets is to aim for net zero emissions across all greenhouse gases, including methane. Agricultural emissions in our district (10.5% in 2016/17)<sup>3</sup>, are much lower than in New Zealand as a whole (48.1% in 2017). This means achieving net zero emissions across all gases should be more achievable in our district, although more work will need to be done to understand how we can reduce methane from our waste management systems, including landfills.

A more ambitious approach for Christchurch could also include bringing forward the target year to reach net zero greenhouse gas emissions (for example to 2040).

<sup>3</sup>Christchurch Community Carbon Footprint 2016/17 - AECOM report available here: our community carbon footprint <https://ccc.govt.nz/environment/climate-change/>

Reducing our greenhouse gas emissions will create a cleaner healthier environment, while providing the opportunity for innovative solutions and new industries to be developed in Christchurch.

### An interim target

Whether our district supports aligning with the national Zero Carbon Bill targets, or adopting a more ambitious approach, we believe setting an intermediary target will help ensure we are making good progress towards our target. In line with the International Panel on Climate Change (IPCC) advice on the need to roughly halve recent emissions by 2030, we suggest setting an additional target for the district:

- *50% reduction in greenhouse gas emissions district-wide by 2030 (from our 2016/17 baseline levels)*

### BREAKOUT BOX: What is climate change?

Climate change refers to significant changes in global temperature, precipitation, wind patterns and other measures of climate that occur over several decades or longer<sup>4</sup>.

Earth's climate has changed over millions of years - from warmer periods to ice ages and back again. In the past, changes in the earth's climate were usually gradual, which allowed time for plants and animals to adapt. In recent decades the climate has been changing far more rapidly. Since the industrial revolution there has been a noticeable increase in greenhouse gas producing activities such as transportation, industry, and agriculture. These human-induced (anthropogenic) activities are increasing the level of greenhouse gases in our atmosphere and causing the Earth to heat up at an unprecedented rate<sup>5</sup>.

### BREAKOUT BOX: What are greenhouse gases?

Greenhouse gases - including carbon dioxide (CO<sub>2</sub>), methane (CH<sub>4</sub>), and nitrous oxide (N<sub>2</sub>O) - trap heat from the sun in the atmosphere and prevent the planet's surface from freezing. Recently though, the concentration of greenhouse gases in the atmosphere has significantly increased, causing the atmosphere to retain more heat. Without swift action to reduce greenhouse gas emissions there will likely be serious consequences later this century.

The scientific consensus behind international climate policy is that warming needs to be restricted to less than 2°C above pre-industrial levels to prevent damaging effects later this century. The strong preference is limiting warming to below 1.5°C, which would likely prevent the worst consequences of climate change. To avoid warming greater than 1.5°C, global carbon emissions need to rapidly reduce, and then remain at very low (even net negative) levels in the future.

The International Panel on Climate Change (IPCC) reported that human activities are already estimated to have caused approximately 1.0°C of global warming above pre-industrial levels, and that global warming is likely to reach 1.5°C between 2030 and 2052 if it continues to increase at the

<sup>4</sup> <https://climatechange.ucdavis.edu/science/climate-change-definitions/>

<sup>5</sup> <http://www.mfe.govt.nz/climate-change/why-climate-change-matters/evidence-climate-change>

current rate<sup>6</sup>. If we don't take any action and global emissions remain high, New Zealand could reach a potentially devastating 3.7°C rise by the end of the century<sup>7</sup>.

### **BREAKOUT BOX: International and national context**

At an international level, New Zealand is a party to the United Nations Framework Convention on Climate Change and the Kyoto Protocol, and must report progress on our obligations. In 2016 parliament ratified the Paris Agreement, which comes into effect from 2020.

At a national level the Ministry for the Environment provides guidance on climate change issues. A Climate Change Response (Zero Carbon) Amendment Bill<sup>8</sup> is currently moving through parliament. In addition to setting national emissions reduction targets, the Bill will establish a Climate Change Commission to provide independent advice to the government on setting emission budgets and further guidance on adaptation issues.

### **Have your say**

We'd like to hear your thoughts on whether our district should use the national emissions targets, or whether you would like the district to take a more ambitious approach when setting our targets.

#### **Comments:**

**Do you support an interim target as a way to encourage early action?** YES / NO

#### **Any other comments**

### **What's next after setting targets?**

Once we've heard your views and the targets are adopted, we'll continue our work with the community on actions we can take towards achieving the targets. The targets will be integrated into development of our upcoming climate change strategy. The strategy will also consider wider issues around climate change in the district, including how we'll plan and adapt to changes in the future, the importance of ensuring a just and equitable transition to a low carbon economy, and how we'll continue to care for our natural environment.

<sup>6</sup> IPCC Special Report: Global Warming of 1.5°C <https://www.ipcc.ch/sr15/chapter/summary-for-policy-makers/>

<sup>7</sup> Ministry for the Environment – Climate Change Projections for New Zealand, 2018.

<https://www.mfe.govt.nz/publications/climate-change/climate-change-projections-new-zealand>

<sup>8</sup> <https://www.parliament.nz/en/pb/bills-and-laws/bills-digests/document/52PLLaw25931/climate-change-response-zero-carbon-amendment-bill-2019>

### Developing the climate change strategy

We'll be closely engaging with the community as we develop our district's climate change strategy to ensure it reflects community aspirations for Christchurch. Once we're sure we're on the right track we'll begin work on implementation planning with the community.

While developing our strategy we will continue to build on our existing climate change programme. You can find out more about what we're already doing here and how you can get involved: <https://ccc.govt.nz/environment/climate-change/>

DRAFT

## 8. Update on Extinction Rebellion Deputation Request

Reference: 19/655721

Presenter(s): Teresa Wooding

### 1. Purpose of Report

- 1.1 The purpose of this report is to provide advice on the deputation requests presented by Extinction Rebellion at the Council meeting 23 May (CNCL/2019/00101)

### 2. Executive Summary

- 2.1 Extinction Rebellion presented a deputation at the meeting of Council on 23<sup>rd</sup> May, making a number of recommendations and points of importance to note. The Council resolved to request further advice from Council officers based on their deputation and requests. This report summarises the recommendations presented by Extinction Rebellion in light of what action Council has taken in regards to the issue.

### 3. Staff Recommendations

That the Innovation and Sustainable Development Committee:

1. [Receive the information in the report](#)

### 4. Context/Background

#### Issue or Opportunity

- 4.1 Extinction Rebellion presented a deputation at the meeting of Council on 23<sup>rd</sup> May, making a number of recommendations and points of importance to note. The Council resolved to request further advice from Council officers based on their deputation and requests, to be reported to the June and July 2019 Innovation and Sustainable Development Committee meetings. The handout outlining the recommendations from Extinction Rebellion is attached.

#### Strategic Alignment

- 4.2 This report is aligned with the Council's strategic priority, Climate Change Leadership and with the four community outcomes.
- 4.3 This report supports the [Council's Long Term Plan \(2018 - 2028\)](#):
  - 4.3.1 Activity: Strategic Planning and Policy
    - Level of Service: 17.0.1.7 Advice to Council on high priority policy and planning issues that affect the City. Advice is aligned with and delivers on the governance expectations as evidenced through the Council Strategic Framework - Policy advice to Council on emerging issues.

#### Assessment of Significance and Engagement

- 4.4 The decision in this report is of low significance in relation to the Christchurch City Council's Significance and Engagement Policy.
- 4.5 The level of significance was determined by the fact that report is for information only.

## 5. Community Views and Preferences

- 5.1 The recommendations presented by Extinction Rebellion are summarised below in light of what action Council has taken on the issue.
- 5.2 In summary, the recommendations include declaring a climate and ecological emergency and making a pledge to make Christchurch City Council carbon neutral by 2025 and add the words “the wider city of Christchurch to the pledge for carbon neutrality by 2025”.
- 5.3 It is recommended that climate change leadership and safe and sustainable water become over-arching objectives of strategic documents and that Council establish a Citizen’s Assembly to make decisions about how Christchurch City should respond to climate change.
- 5.4 Further recommendations are orientated towards the use of resources to promote the message of emergency and the reprioritisation and allocation of funding in light of climate change action and sustainable funding for the future, acknowledging the intergenerational impacts of climate change.
- 5.5 The recommendations focus on working in partnership with communities, Tangata Whenua and youth as well as other cities, local authorities and central government in addressing the impacts of climate change.
- 5.6 Extinction Rebellion recommends that Council prioritise ecological restoration by ensuring that it doesn’t use substances that are harmful to the environment, and phase out the trade and use of pollutants and promotes restorative agriculture practices. It’s also recommended that Council prepare contingency plans for an abrupt climate change emergency.
- 5.7 Finally, the recommendations include reporting back to Council by September on actions taken to address the climate emergency.
- 5.8 Significant action has been taken and is planned on the issues identified by Extinction Rebellion, some of which are detailed in the resolutions of Council at its meeting on 25 May 2019. Many of the recommendations and issues of importance raised are being addressed through the climate change programme.
- 5.9 The Council resolved that Christchurch join with other cities and districts in declaring a global climate and ecological emergency, in order to raise public awareness about the urgency of the need for everyone to take action to reduce carbon emissions to zero, and to highlight the importance of engaging our communities to better prepare ourselves for the impacts of climate change, including undertaking mitigation measures and co-creating adaptive planning tools. This included making climate change leadership and safe and sustainable water the overarching objectives of our key strategic documents including, but not limited to the Long Term plan/Infrastructure and Finance Strategies.
- 5.10 Council has a history of climate change action and has set itself the goal of being carbon neutral for its operations by 2030. It is planning public consultation to set an emissions target for the Christchurch District by September 2019.
- 5.11 Council is active in the community on a range of sustainable initiatives and climate change actions and is developing its external engagement approach. This has included a sentiment survey to all residents seeking their views on climate change and Council is planning further external engagement in developing its climate change strategy and action plans. Council engages and works with other local authorities for example the Regional Climate Working group and other major cities including Auckland, Wellington and Dunedin, through national events such as the recent Transition summit in New Plymouth and LGNZ events. Council advocates to central government and is preparing a submission on the Climate Change Response (Zero Carbon) Amendment Act.

- 5.12 The Council is committed to promoting climate change action and has a role to play in this space. The Council uses its communications platform, Newsline to profile climate change initiatives and feature stories of community action involving Council. We are currently developing our internal and external communications strategy and how we can spread the word and share the stories of our collective action as a community.
- 5.13 Educational support is a key component of the climate change programme both in terms of increasing understanding about climate change and also about individual and collective action. As well as increased collaboration with and support for existing school and community programmes such as 'Future Living Skills we are also pursuing opportunities to invite and host speakers as part of the Christchurch Conversation Series and public talks using our facilities such as libraries where people can come and engage and educate on the issue of climate change.
- 5.14 The Council has taken a lead on the reduction of the use of glyphosate and is looking to increase that reduction in its current annual plan.
- 5.15 In regards to issues of funding and decision making, the Council has a framework through its Long term plan and Annual plan on the allocation of funding with regard to the Council's levels of service to achieve the Community outcomes and Strategic priorities. The Council has developed a climate change programme and reports six monthly to the Council on its programme of work and achievements. During the programme of work, there will be the opportunity for participation and partnerships with our community. This is the engagement approach over the establishment of a Citizens Assembly.

## **6. Legal Implications**

- 6.1 There is not a legal context, issue or implication relevant to this decision. This report has not been reviewed and approved by the Legal Services Unit

## **7. Risks**

- 7.1 There is a risk that the community does not fully participate in our programme of work but this is mitigated with our internal and external engagement programme.

## **8. Next Steps**

- 8.1 The Council and Innovation and Sustainable Development Committee will continue to receive updates on the climate change programme which includes the climate change strategy development and ongoing action. The next stage will be the public consultation on the emissions target for the Christchurch District which is anticipated as being undertaken in July 2019.



## Attachments

No.	Title	Page
A <a href="#">↓</a>	Extinction Rebellion Handout	26

## Confirmation of Statutory Compliance

Compliance with Statutory Decision-making Requirements (ss 76 - 81 Local Government Act 2002).

(a) This report contains:

- (i) sufficient information about all reasonably practicable options identified and assessed in terms of their advantages and disadvantages; and
- (ii) adequate consideration of the views and preferences of affected and interested persons bearing in mind any proposed or previous community engagement.

(b) The information reflects the level of significance of the matters covered by the report, as determined in accordance with the Council's significance and engagement policy.

## Signatories

<b>Authors</b>	Emma Davis - Head of Strategic Policy Teresa Wooding - Project Manager
<b>Approved By</b>	Brendan Anstiss - General Manager Strategy and Transformation

Christchurch City Council Declaration

That the Innovation and Sustainable Development Committee Recommends that the Council resolves that:

1. Christchurch joins with other cities and districts in declaring a climate and ecological emergency.
2. We will pledge to make the Christchurch City Council carbon neutral by 2025.
3. Climate change leadership and safe and sustainable water become the overarching objectives of our key Strategic Documents including, but not limited to the Long Term Plan/Infrastructure and Finance Strategies.
4. Council will establish a Citizens Assembly made up of a randomly chosen representative range of Christchurch citizens. This shall be independently run by facilitators trained in running Citizen's Assemblies, and will make decisions about how Christchurch City should respond to climate breakdown and the ecological crisis. This assembly will include youth representatives and will be independently run by facilitators trained in running Citizen's Assemblies and advised by a range of unaffiliated experts. Would need a report.
5. Council will use all the resources available to get the message of emergency and the facts underpinning it, out to the wider public.
6. Council will prioritise ecological regeneration by ensuring that no substances it uses are harmful to the environment
7. Council will continue to call on government to provide the necessary powers and resources to make local action on climate breakdown a reality.
8. The Christchurch City Council will work with other major cities and local authorities to determine and implement best practice methods to achieve carbon neutrality.
9. That a report be made to Full Council by September detailing the actions the Mayor/Council will take to address this emergency.

Further, while we recognise that the following clauses would require a report to council or further discussion and therefore cannot be added today, we would like the council to note them as important and to consider adding them at a later date:

- To add the words "the wider city of Christchurch to the pledge for carbon neutrality by 2025", following the outcome of the review of the mayoral agreement.
- All moneys that have been allocated but not yet used, and all plans presently in place but not yet actioned, will be reviewed in light of the climate and ecological emergency.
- Council will not prioritise expenditure on short-term adaptation and the avoidance of economic impacts on the current generation over the ability of future generations to adapt to increasingly severe climate change. The council will explore options to preserve funding for the future, to help our children adapt to an increasingly challenging future.
- Council will focus on equity so that the burden of transformation is shared in a reasonable manner which prioritises those most vulnerable to climate impacts and most in need of support in transitioning to renewable energy/carbon neutral society. This must be done through meaningful partnerships with communities, Tangata Whenua, and youth to ensure a just transition and that no-one is left behind.
- Council will direct staff to establish a remaining carbon budget for corporate and community emissions commensurate with limiting warming to 1.5°C, re-evaluate how to best measure such emissions, and report annually on the expenditure of city's remaining carbon budget.
- To add the words "by phasing out the trade and usage of all pollutants, and commit to promoting and encouraging restorative agricultural practices" to the clause on ecological regeneration.
- The council will begin to prepare contingency plans for an abrupt climate change scenario and the effect this could have on food supplies and other critical resources required by the people of Christchurch.

## 9. Update from ChristchurchNZ on the Antarctic Gateway Strategy

Reference: 19/617978

Presenter(s): David Kennedy , Head of the Antarctic Office

### 1. Purpose of Report

- 1.1 At the 24 May 2018 Council meeting the Antarctic Gateway Strategy was adopted and transferred to the Antarctic Office.

#### **Council Resolved CNCL/2018/00092**

That the Council:

1. Approve Christchurch's Antarctic Gateway Strategy noting that leadership of the Strategy is retained by the city and the implementation of the Strategy is the responsibility of ChristchurchNZ.
2. Approve the responsibility for the Antarctic Office being transferred to ChristchurchNZ, together with accompanying funding, effective as at 1 July 2018, noting that working closely with the Mayor's office and Civic and International Relations team will be an important part of the relationship.
3. Request ChristchurchNZ report on a six monthly basis to the Innovation and Sustainability Committee, with the International Relations Working Group invited to attend.

The update report is provided as Attachment A.

### 2. Staff Recommendations

That the Innovation and Sustainable Development Committee:

1. Receive the information in the report.

### Attachments

No.	Title	Page
A <a href="#">↓</a>	The Antarctic Office - Six Monthly Update	29

### Confirmation of Statutory Compliance

Compliance with Statutory Decision-making Requirements (ss 76 - 81 Local Government Act 2002).

(a) This report contains:

- (i) sufficient information about all reasonably practicable options identified and assessed in terms of their advantages and disadvantages; and
- (ii) adequate consideration of the views and preferences of affected and interested persons bearing in mind any proposed or previous community engagement.

(b) The information reflects the level of significance of the matters covered by the report, as determined in accordance with the Council's significance and engagement policy.

Signatories

Author	Sarah Drummond - Committee and Hearings Advisor
Approved By	Sarah Drummond - Committee and Hearings Advisor



The  
Antarctic  
Office

# The Antarctic Office

Report from 30 May 2018 to 30 May  
2019

ChristchurchNZ™



## CONTENTS

1. Executive Summary
2. The Antarctic Office - Strategy Implementation progress
3. National Antarctic Programme updates
4. Antarctic Sector updates

---

The Antarctic Office 6 monthly report to June 2019



## 1. EXECUTIVE SUMMARY

The Christchurch Antarctic Gateway Strategy (CAGS) was ratified by CCC in May 2018. The first action under the CAGS was to integrate The Antarctic Office (TAO) into ChristchurchNZ. Manager – Relationships for TAO, Sue McFarlane began working with the ChristchurchNZ team, and the role of “Head of The Antarctic Office” was advertised and filled, with David Kennedy commencing in the role in mid-November 2018.

A busy programme of public, business and civic events was once again rolled out to celebrate Antarctic Season Opening in late September with one of the highlights being the availability of two C17 Globemasters for the public “Air Day” at the International Antarctic Campus. Over 6,500 Christchurch residents turned out for this public celebration of the city’s Antarctic connections. A delegation of 40 international delegates were hosted to business forums and a civic welcome reception celebrating season opening and welcoming the Antarctic Programs back to the city.

The 2018/19 Antarctic season was marked by some interesting logistical challenges. The non-licensing of the Italian charter aircraft resulted in most of the Italian air logistics being hubbed out of Hobart, while the shipping logistics remained in Lyttleton. Consistently bad weather in Antarctica at the commencement of the season meant the first flights to the ice were delayed by two weeks. There is a COMNAP (Council of Managers of National Antarctic Programmes) meeting in Christchurch in May 2019 to discuss logistics sharing options moving forward with key countries involved in the Ross Sea/Terra Nova Bay region.

From November 2018, The Antarctic Office has been consulting with key stakeholders in the Antarctic sector around prioritisation of the action areas within the strategy and has identified four “Priority Projects”, as the first stage of implementation of the Christchurch Antarctic Gateway Strategy. These key projects target the three main audiences highlighted in the strategy – Businesses, Locals and Visitors.

The remaining financial year to 30 June will see The Antarctic Office focusing on commencing the “Priority Projects” while utilising the leverage of the broader ChristchurchNZ pillar teams to amplify the stories of Christchurch’s Antarctic connections. The NASA “Flying Observatory” SOFIA will deploy in Christchurch again from late May to late July. The Antarctic Office is investigating the possibility of a Public Open Day for SOFIA pencilled for 20 July.

---

The Antarctic Office 6 monthly report to June 2019



## 2. ANTARCTIC OFFICE STRATEGY IMPLEMENTATION

The Antarctic Office visited key diplomats and stakeholders in Wellington in early 2019 to introduce the new Head of The Antarctic Office, including MFAT and Antarctic Programme partners, USA, Korea, Italy, as well as Antarctic Gateway city partners Chile, Argentina and South Africa.

In the first half of 2019, The Antarctic Office will focus on commencement of “Priority Projects” targeting different audiences identified in the Christchurch Antarctic Gateway Strategy:

Action	Date	Status
Christchurch Antarctic Gateway Strategy approved by CCC	May 2018	Achieved
The Antarctic Office moved to ChristchurchNZ	July 1 2018	Achieved
Delivery of successful Antarctic Season Opening 2018	Sept/Oct 2018	Achieved
Commencement of new Head of The Antarctic Office	Nov 12 2018	Achieved
Consultation with Key Antarctic stakeholders around priorities for Antarctic Strategy implementation	Nov/Dec/Jan 18/19	Achieved
Civic welcome of Chinese Icebreaker <i>Xue Long</i>	Dec 2018	Achieved
Antarctic Strategy Implementation plan finalised	Feb 2019	Achieved
Co-ordination of Open Day for Korean Icebreaker <i>Araon</i>	March 2019	Achieved
Planning commenced for SOFIA welcome and Open Day	March 2019	Achieved
Initial planning for Antarctic Season Opening 2019	March 2019	Achieved
<b>Priority &amp; Future Projects</b>		
The Explorers Club – Christchurch Chapter		Launch 20 July
SOFIA – Welcome and Open Day	May-July	Planning underway
Antarctic Season Opening enhancement	Commenced	October 2019
Christchurch Antarctic Business Network and Directory	Commenced	Launch late 2019
Antarctic Tourism Trail	Scoping	Pilot launch by June 2020

The Antarctic Office 6 monthly report to June 2019



### 3. NATIONAL ANTARCTIC PROGRAMMES

#### Antarctica New Zealand

- In November 2018 MBIE contracts AntarcticaNZ to manage the Antarctic Science Platform, a \$49 million research fund available over the next seven years
- New Zealand Minister for Climate Change, James Shaw visits Antarctica in January 2019
- Business Case proposal for Scott Base redevelopment presented to NZ Government for 2019 Budget consideration
- In conjunction with COMNAP, MFAT and The Antarctic Office, organised a Ross Sea logistics meeting in Christchurch May 15, 2019 – all countries operating in the Ross Sea in attendance, agree to take this discussion further at a COMNAP sub-committee level
- NZ Antarctic Science Conference booked for Christchurch Town Hall 17/19 June 2019
- Public Science Talks (Antarctica After Dark) planned for the evening of Monday 17 June 2019 at The Great Hall – Christchurch Arts Centre – co-ordinated by AntarcticaNZ, promoted and supported by The Antarctic Office
- New CEO for Antarctica NZ announced in April 2019. Sarah Williamson commences in the role in mid-June 2019

#### United States Antarctic Programme (USAP)

- US Air Force flew two C17 Globemasters to 2018 Season Opening for the first time. This gave greater capacity for public “Air Day” and helped logistically through the early part of the season as one of these C17s had mechanical problems – 6,500 Christchurch residents attended “Air Day” as part of Antarctic Season Opening celebrations
- Some issues with late arrival of USAP supply ship “Ocean Giant” to Lyttleton Port
- Tragic fatalities of two fire technicians at McMurdo who were servicing a fire suppression system in a generator building near McMurdo base – cause of the incident under investigation
- US Coastguard Polar Star Icebreaker visited Wellington. The Antarctic Office attended a reception at the invitation of the US Embassy. The US Ambassador indicated that the Polar Star will visit Auckland next season. New USD \$ 655 million Icebreaker commissioned expected to be launched in 2024
- US Ambassador Scott Brown kindly offered his presence and assistance at any Antarctic related Christchurch events
- US Head of Polar Programs for the National Science Foundation (NSF), Dr Kelly Falkner gives public talk in Christchurch Town Hall in April 2019, on the AIMS project – Antarctic Infrastructure Modernisation for Science – a US\$ 600 million development of 24,000 square metres of construction over the next ten years. The Antarctic Office is working with the USAP to introduce local businesses to opportunities around the McMurdo rebuild

---

The Antarctic Office 6 monthly report to June 2019



#### Korean Antarctic Programme (KOPRI)

- Christchurch Deputy Mayor Andrew Turner visited KOPRI in Seoul. This was seen by the Koreans as reinforcement of Christchurch's commitment to and support of KOPRI's programme based in Christchurch and followed a visit from Mayor Dalziel in June 2017. This ongoing Christchurch Civic commitment was remarked upon and highly appreciated by the Korean Ambassador to NZ when TAO visited the Korean Embassy in February.
- Korean Icebreaker Araon visited Lyttleton from 23 – 25 March 2019 on its return journey, with a limited "Open Day" for selected primary and secondary school science educators and their students, and scientists from UC, Ara, Antarctica NZ and other institutions
- There are indications that Korea will shortly approve the construction of a new Icebreaker, expected to be commissioned in four to five years
- The Araon Icebreaker assisted the Chinese Icebreaker Xue Long after a collision with an iceberg. The Araon returned several Chinese scientists to Lyttleton after the incident in the spirit of Antarctic cooperation
- Mayor Dalziel meets with KOPRI programme Director Dr. Yeadong Kim, and officially thanks and farewells him, as he returns to Korea for retirement

#### Italian Antarctic Programme (ENEA)

- Difficulties prior to season opening with normal South African charter aircraft failing to secure a licence to operate. Hobart offered to help with Italian air logistics. Australians fly Airbus 319 directly to sea ice runway near Mario Zuchelli Station for the first time
- Italian sea logistics still departed from Lyttleton for 2018/19 season
- Christchurch Meeting on May 15, 2019 was co-ordinated by COMNAP, AntarcticaNZ and MFAT to discuss logistics sharing options in the Ross Sea region in the future
- Italians construct first section of hard rock runway near Mario Zuchelli Station. When completed the 2km long runway will be capable of landing LC130 Hercules aircraft, or similar. This runway will be a pivotal air logistic (and SAR) hub for the Terra Nova Bay region, with Italy, Korea, Germany, France and China all potential users
- The Italian National Institute of Oceanography and Experimental Geophysics – (OGS) have purchased former British Antarctic Survey Icebreaker/Research vessel "RRS Ernest Shackleton". The new OGS ship that will work for PNRA/ENEA (The Italian Antarctic Programme). The Icebreaker ship, is to be renamed **N/R Laura Bassi** in honor of the Italian scientist **Laura Maria Caterina Bassi Veratti** who, in the 1700's became the first female Italian University Professor. She was the second woman graduate of Italy after the Venetian Elena Lucrezia Cornaro, the first to pursue an academic and scientific career and the first in the world to obtain a university chair. The **N/R Laura Bassi** is expected to visit Lyttelton twice over the 2019/2020 Antarctic Season, and may operate out of Lyttelton for Autumn/Winter 2020, undertaking oceanographic research for OGS.

---

The Antarctic Office 6 monthly report to June 2019



### Other Antarctic Programmes

#### China

- (CHINARE35) – China's Icebreaker Xue Long visited Lyttleton in late December 2018. A Christchurch welcome delegation of sector representatives was led by Cr. Anne Galloway
- Research vessel and Icebreaker Xue Long collided with an iceberg on the way to Terra Nova Bay, with no injuries
- Construction of new Chinese base on Inexpressible Island near Terra Nova Bay continues

#### Germany

- Germany's Gondwana base in Terra Nova Bay is operated by BGR, a private German research company and logistics are currently operated on an informal basis with the Italian programme. There are initiatives underway to bring the German programme in through official German government channels, which could open the opportunities for increased German activities and joint venture operations through the Christchurch gateway.

#### 4. ANTARCTIC SECTOR UPDATES – other stakeholders

Antarctic Heritage Trust - Several initiatives and local exhibitions being planned for 2019. Details still being finalised

COMNAP – COMNAP SAR workshop held in Christchurch 16/17 May 2019 – 80 delegates attended. First time this workshop has been held outside South America

SOFIA – Working with the Christchurch Aerospace Industry Group to provide a welcome/networking event for SOFIA team on 14 June 2019. Public open day on 20 July for SOFIA display and aircraft walk through

Canterbury Museum – Breaking the Ice Exhibition- 18 May - to 13 October. *Breaking the Ice: The First Year in Antarctica* will be the public's only chance to see items left behind by Carsten Borchgrevink's *Southern Cross* and Robert Falcon Scott's *Terra Nova* expeditions in two huts at Cape Adare. The artefacts were conserved in a Canterbury Museum laboratory by an Antarctic Heritage Trust team of international experts. Under the government permit required to remove the items from Antarctica, they must be returned to the huts following their temporary removal for conservation

Antarctic Spirit Concert- 29 June 2019. Christchurch Town Hall. The Christchurch City Choir and Southern Cross Brass present a programme of music and imagery by predominantly New Zealand composers and artists to commemorate the diamond jubilee of the signing of the International Antarctic Treaty and 100 years since the birth of Sir Edmund Hillary. The Antarctic Office has facilitated introductions to the Antarctic community and promoted this event through ChristchurchNZ media and marketing channels.

#### University of Canterbury – Antarctic Scholarships

Shinae Montie was awarded an MFAT scholarship for her research using satellite remote sensing to detect heatwaves in the Antarctic Ocean. Rose Foster will explore the microhabitat variables,

---

The Antarctic Office 6 monthly report to June 2019



such as fast ice (sea ice attached to the shore), for emperor penguin colonies in the Ross Sea area, joining an international Antarctic-wide project, thanks to a scholarship from CCC, which will in future be part of The Antarctic Office strategy implementation.

---

The Antarctic Office 6 monthly report to June 2019

## 10. Suburban Regeneration Biannual Report to end of March 2019

Reference: 19/348769

Presenter(s): Miranda Charles, Senior Planner – Urban Regeneration

### 1. Purpose of Report

- 1.1 The purpose of this report is for the Innovation and Sustainable Development Committee to be informed on implementation progress for projects within the Suburban Regeneration Programme.

### 2. Executive Summary

- 2.1 This report is for 'information only' purposes, and is relevant for the period between October 2018 and March 2019. Key progress for projects within the Suburban Regeneration Programme is outlined in paragraphs 4.2 to 4.14 below. A more detailed update is provided in Attachment A.

### 3. Staff Recommendations

That the Innovation and Sustainable Development Committee:

1. [Receive the report.](#)

### 4. Key Points

- 4.1 Progress on implementing projects within the Suburban Regeneration Programme is reported via a biannual overview. The progress update (Attachment A) has been circulated to Community Boards, with a request for feedback and comment. No feedback was received.

#### North-west

- 4.2 Edgeware Village Master Plan: While waiting for the Village street upgrade to commence in FY21/22, the community has undertaken some targeted beautification initiatives (e.g. refreshed gardens, rubbish bin repainting and sourcing of planter boxes).
- 4.3 Bishopdale Village Mall revitalisation: Following an 'inquiry by design' workshop with stakeholders, staff are considering options for the future management of Council-owned land in the Mall. A community activation project on the old Bishopdale Library site has also received Shape Your Place Toolkit-related funding from the Community Board's FY18/19 Discretionary Response Fund.

#### South-west

- 4.4 Sydenham Master Plan: Staff have worked with Fletcher Living to relocate some of the original artefacts from Buchan Park back to the former Sydenham School site.
- 4.5 Selwyn Street Master Plan: Public consultation has been completed on the draft Selwyn Street Reserve landscape plan. Staff will report to the Community Board in May 2019.

#### North-east

- 4.6 Linwood Village projects: Progress on the Linwood Village Master Plan includes planning for community engagement to design and install children's interactive play/art in Doris Lusk Park. The *Linwood Tiny Shops* project has also received an Enliven Places Rates Incentive credit.

Staff continue to support the working group created to develop the Linwood/Inner City East Revitalisation Plan.

- 4.7 Richmond Village: Funding from the Enliven Places Programme has been used to help beautify Richmond Village with the installation of ten planter boxes. A further project is in the planning stages.
- 4.8 New Brighton Master Plan: Staff are continuing to work with DCL to finalise a concept design for the Marine Parade and Brighton Mall street upgrade. The Enliven Places Projects Fund was also used to support various New Brighton projects during this reporting period.

### South-east

- 4.9 Ferry Road Master Plan: Detailed design work is underway on the street upgrade through Woolston Village, and road safety improvements have commenced at Woolston Park and Te Waka Unua School. The Enliven Places Projects Fund supported the theatre performance *Up and Away* at the Phillipstown Community Hub.
- 4.10 Main Road Master Plan: Public consultation has been completed on the draft Scott Park landscape plan, and staff will report to the Community Board shortly. Progress continues to be made on road safety improvements near the new Redcliffs School site.
- 4.11 Sumner Master Plan: Construction on the street upgrade through Sumner Village commenced on 19 March 2019, and the work will take approximately six months to complete.

### Bank Peninsula

- 4.12 Lyttelton Master Plan: A heritage grant has been approved to restore/reuse the former home of artist Bill Hammond at 26 Canterbury Street, and the Community Board has received a staff report on the Lyttelton Design Review Panel. Sumner Road from Evans Pass to Lyttelton has reopened, and progress continues to be made on the Naval Point development. An Enliven Places Rates Incentive is supporting the 'Collette's Corner' site.

### Other relevant projects

- 4.13 NZTA and the Council are working together on a thirty-year strategy for the Brougham Street/SH75 and Moorehouse Avenue area. The project has an interface with three suburban centre master plans (i.e. Selwyn Street, Sydenham and Ferry Rd).
- 4.14 The Council adopted the Suburban Parking Policy in February 2019.

## 5. Context/Background

### New template

- 5.1 The previous Suburban Biannual Report was presented to the Innovation and Sustainable Development Committee on 21 November 2018.
- 5.2 As the Suburban Regeneration Programme now includes a variety of other work, e.g. revitalisation initiatives in Linwood/Inner City East Revitalisation Plan and in Bishopdale Mall, the template for the Suburban Biannual Report (Attachment A) has been reformatted. This reflects the ongoing evolution of the Programme since the 2010/2011 earthquakes.
- 5.3 Previous progress updates have focused on the nine Council-adopted suburban centre master plans and projects delivered through the Enliven Places Programme. This Biannual Report has been organised spatially, into Christchurch City (north-west, south-west, north-east and south-east) and Banks Peninsular. The last page of the report includes a section for 'other relevant projects'.

- 5.4 Similar to the Central City Biannual Report, the Suburban Biannual Report has included information about Council funding.

## Attachments

No.	Title	Page
A <a href="#">↓</a>	Attachment A - Suburban Biannual Report Oct 2018 - Mar 2019	40

Item 10

## Confirmation of Statutory Compliance

Compliance with Statutory Decision-making Requirements (ss 76 - 81 Local Government Act 2002).

(a) This report contains:

- (i) sufficient information about all reasonably practicable options identified and assessed in terms of their advantages and disadvantages; and
- (ii) adequate consideration of the views and preferences of affected and interested persons bearing in mind any proposed or previous community engagement.

(b) The information reflects the level of significance of the matters covered by the report, as determined in accordance with the Council's significance and engagement policy.

## Signatories

<b>Author</b>	Miranda Charles - Senior Advisor Urban Regeneration
<b>Approved By</b>	Carolyn Ingles - Head of Urban Regeneration, Design and Heritage Brendan Anstiss - General Manager Strategy and Transformation

## ATTACHMENT A—Suburban Regeneration Biannual Report

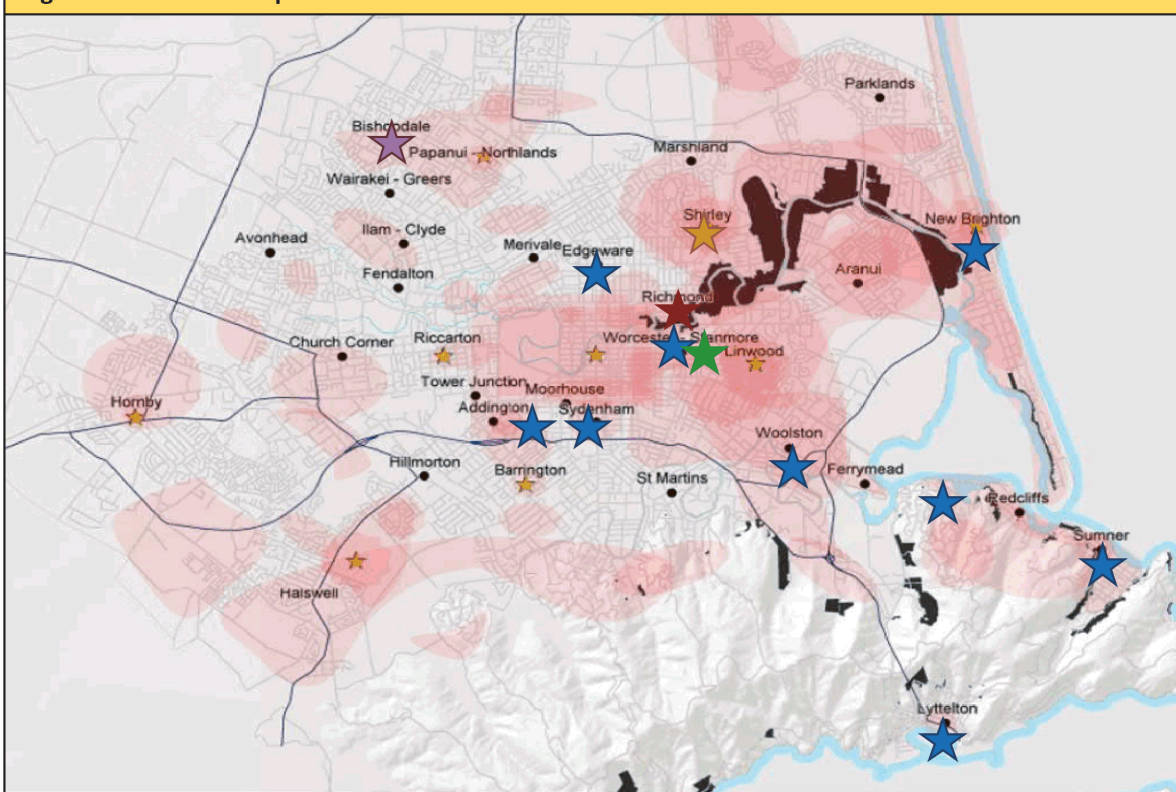
### Key Updates for the Period October 2018— March 2019

The enclosed information highlights project progress made over the past six months. The information is organised spatially and clustered into the following areas: Christchurch North-west, South-west, North-east and South-east and Banks Peninsular. Project updates are provided where relevant, as well as general programme funding information and capital delivery progress for Council-led master plan projects. It should be noted that this report is not a complete view of the Council's regeneration progress. Many other projects that contribute to suburban regeneration outcomes will be reported through other channels.

**Background:** The Suburban Programme has evolved over several years following the 2010/2011 Canterbury Earthquakes. From 2011, the programme predominantly consisted of nine 'Suburban Centre Master Plans' and projects supported through the 'Enliven Places Programme' (formerly called the 'Transitional City Programme'). Other projects have been added in recent years as a result of Council or Community Board resolutions and/or identified opportunities for integrated planning approaches with other agency partners (e.g. the Crown/government departments, Regenerate Christchurch, Development Christchurch Limited).

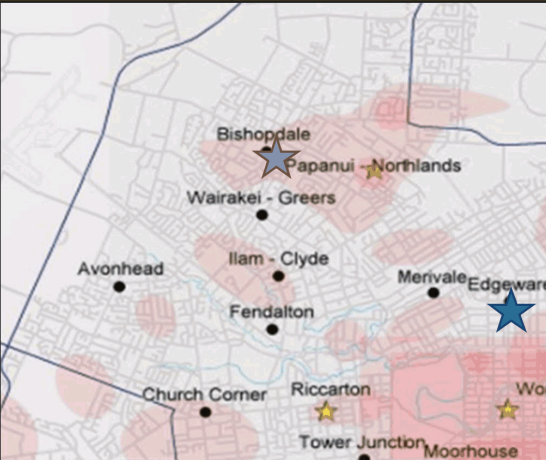

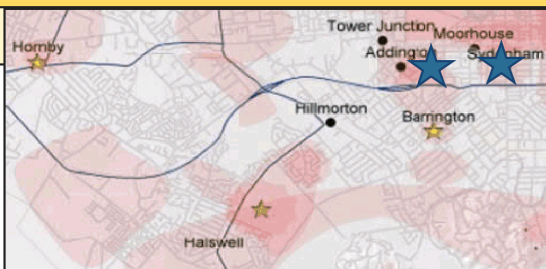

**'Regeneration Heat Map':** The figure below is a 'regeneration heat map' that has been developed by the Urban Regeneration Team. Specific environmental, social or economic data of relevance to urban regeneration has been layered over the city's urban areas. The darker the colour-hue, the more complex the regeneration issues. The spatial distribution of projects within the Suburban Programme is also shown on the map.

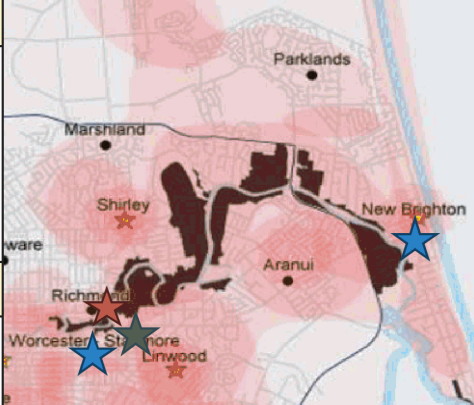

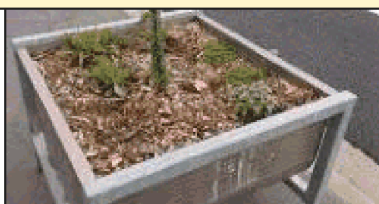

### Regeneration "heat map"



#### Key

- ★ Suburban master plan
- ★ Bishopdale Village Mall revitalisation project
- ★ Linwood Village/ Inner City East community-led revitalisation plan
- ★ Enliven Places project in FY18/19
- ★ Shirley HNZ partnership (on-hold)
- ★ Key Activity Centre

NORTH-WEST	
<b>Edgeware Village Master Plan — Council-led</b>	
At the Community Board’s request, staff have considered opportunities for earlier delivery of relocatable elements of the ‘A1’ streetscape upgrade through Edgeware Village. The LTP allocates a small capital budget in FY18/19, with the bulk of the budget allocated from FY21/22. This two-phased delivery approach reflects an earlier request by the Business Association and the Board to achieve some limited beautification initiatives (i.e. gardens refreshed, planter boxes sourced and rubbish bins repainted) whilst deferring major street works for several years. The deferral was requested by businesses to provide time to recover from previous disruptions arising from other works (e.g. the Major Cycleway). Meanwhile, several community-led initiatives have provided a spruce up to some public realm elements.	
<b>Bishopdale Village Mall revitalisation project — collaboration</b>	
The Community Board has asked Council staff and Development Christchurch Limited (DCL) to advise on the revitalisation of Bishopdale Mall. Over the past six months, staff have been working closely with DCL, the Bishopdale Business Association and the Board to research and scope issues and challenges. An ‘inquiry by design’ (IBD) workshop was held with key stakeholders and the results are informing possible future solutions for the centre. Staff are now considering options for future management of Council-owned land in the Mall.	
SOUTH-WEST	
<b>Sydenham Master Plan — Council-led</b>	
Staff have worked closely with Fletcher Living to return some of the original artefacts in Buchan Park back to the former Sydenham School site, now that the ‘Housing Accord’ development is all but complete. Community Development staff are also investigating options for a community use for the site at 1 Carlyle Street. Under the current 2018-28 Long Term Plan, capital funding is allocated in FY21/22 for the remodel of Buchan Park, and funding is allocated to streetscape improvements through Sydenham from FY21/22- FY24/25.	
<b>Selwyn Street Master Plan — Council-led</b>	
Public consultation has been completed on a draft landscape plan for Selwyn Street Reserve (see image on the far-right), and staff will report to the Community Board in May. Once approved, detailed design work will commence so that project delivery can occur in FY19/20.	

NORTH-EAST	
<b>Linwood Village Master Plan — Council-led</b>	
Capital funding is allocated in FY18/19 for a children's play area/ interactive artwork, and community engagement has commenced. Capital funding has also been allocated in FY20/21-FY21/22 to complete a streetscape upgrade through Linwood Village. Some intersection improvements have already been achieved through the delivery of the Rapanui-Shag Rock Major Cycleway.	
<b>Linwood/Inner City East Revitalisation Plan — community-led</b>	
This project arose following a Community Board resolution and a community working group was established in partnership with Te Whare Roimata and the Council. Staff are supporting the working group which is creating a revitalisation plan to facilitate the development of the Inner City East / Linwood Village area. The group is guided by ideas and research from the community who have been asked to come up with creative neighbourhood revitalisation solutions. The key focus of the work is on physical amenity, housing, safety, greenspace, and community development. Project funding is provided through the Resilient Cities Programme.	
<b>Linwood Village 'Enliven Places' project: Tiny shops — collaboration</b>	
Staff are continuing to work closely with Te Whare Roimata to activate the Stanmore Road site following the opening of the "Tiny Shops" project. Shops, community cafe, a community garden, children's play space and a bike repair hut are all located on the site. A new workshop has recently been installed to enable hands-on arts and craft sessions. The last tiny shop will be delivered to site in April.	
<b>Richmond Village 'Enliven Places' project—collaboration</b>	
Staff are working with Richmond Residents' and Business Association (RR&BA) and have installed ten planter boxes on Stanmore Road, to help improve the amenity of the area. Plants requested by the RR&BA have been used, including herbs for use by local restaurateurs and the community generally. A further project is in the planning stages.	
<b>New Brighton Master Plan — collaboration</b>	
Staff are working with DCL to deliver a \$4M streetscape improvement to Marine Parade and Brighton Mall, and will report to the Community Board in April. The upgrade is scheduled to be completed in early 2020. Funding has been allocated for other public realm improvement projects in later years of the 2018-28 LTP. DCL is responsible for master plan delivery and a commercial strategy for the centre. It is also overseeing the construction of hot salt water pools. The image to the right shows a new seaside basketball court artwork titled <i>FORCES</i> and a mural <i>Low Pressure High Pressure</i> which were installed as part of the "SCAPE Public Art Re:ACTIVATE 2018: New Brighton" competition.	

## SOUTH-EAST

### Ferry Road Master Plan — Council-led

The Woolston Village streetscape upgrade has been approved by the Community Board and the Council. Detailed design work can now commence. The contract for safety improvements at Woolston Park and Te Waka Unua School has been awarded and works are expected to commence in the near future. The 'Estuary Edge/ Coastal Pathway' and 'Humphrey's Drive crossing' projects have been integrated with delivery of the Rapanui Shag Rock Major Cycleway project. Funding is allocated in the 2018-28 Long Term Plan to deliver other public realm improvements within the corridor.



### Main Road Master Plan — Council-led

Public consultation on a draft landscape plan for Scott Park closed on 11 March, and staff are due to report to the Community Board in May. Pedestrian safety improvements associated with the relocation of Redcliffs School to Redcliffs Park on Beachville Road have been approved by both the Community Board and the Council. Detailed design work can now commence. Funding is allocated in the 2018-28 LTP to deliver other improvements within the corridor.

### Sumner Master Plan — Council-led

Construction on the Marriner Street—Wakefield Ave street upgrade started on 19 March. Staff have also been gathering pre-construction data (i.e. traffic data, field and online surveys). The information will be collected again in twelve months to help understand the impact of the project on user perceptions and behaviour. Funding is allocated in the 2018-28 Long Term Plan to deliver other public realm improvements within the village.

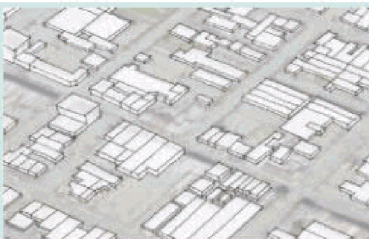




## BANKS PENINSULAR

### Lyttelton Master Plan — Council-led

Staff are investigating the delivery of pedestrian linkages identified in the master plan for which there is capital funding in the LTP. Staff are also been working closely with the Collett's Corner developers (see artists image on right). The City Plan Team is investigating amendments to the on-site car parking rules in the District Plan which would make them less restrictive in parts of the commercial area that are still recovering from the earthquakes. The Lyttelton Historical Museum concept design is being refined ahead of the resource consent application. A fundraising plan will be prepared following preparation of cost estimates. Key stakeholders meetings are taking place to discuss options for the Naval Point development. An interim tidy up of the area is also underway, to improve access and traffic flow within the site. Fifty two remnant piles from a previous marina development will be removed in April. The Community Board has led a review into the Lyttelton Design Review Panel, and a staff report and recommendations have been prepared for the Community Board's consideration. A significant heritage grant of \$258,782 has been approved to help preserve, upgrade and adaptively reuse "Kilwinning Lodge" (the former home of artist Bill Hammond) at 26 Canterbury St. Sumner Rd, from Evans Pass to Lyttelton, reopened on 29 March.



COUNCIL-LED CAPITAL PROJECT MASTER PLAN ACTIONS — completion status since plans adopted										
<p><b>Progress spectrum</b> — The table below shows the percentage of Council-led master plan capital projects that are completed, commenced, ongoing, yet to be started or discontinued. Other master plan projects (e.g. Council-led operational projects or projects to be delivered by land and business owners and/or community groups) are not shown.</p> <p>Note: individual master plans do not have the same number of Council-led capital projects.</p>										
KEY	Not started	Commenced	Completed	Ongoing	Discontinued					
Master Plan										
New Brighton	66%						33%			
Sumner Village	72%						14%		14%	
Sydenham	86%								14%	
Ferry Road	53%				40%			7%		
Edgware Village	75%							25%		
Linwood Village	33%		33%			33%				
Main Road	31%		38%			31%				
Selwyn Street	50%				50%					
Lyttelton	18%	27%		54%				9%	9%	
<div><div><p>Suburban Centres Programme</p></div><div></div><div></div></div>										
COUNCIL-LED CAPITAL PROJECT MASTER PLAN ACTIONS — completion status since plans adopted										
<p><b>Master Plan capital delivery programme</b> - the table below shows current capital budget allocations as shown in the 2018-28 Long Term Plan for the nine suburban master plans.</p>										
Master Plan	FY18/19	FY19/20	FY20/21	FY21/22	FY22/23	FY23/24	FY24/25	FY25/26	FY26/27	FY27/28
New Brighton	\$1,888K	\$2,195K	0	0	0	0	0	\$2,352K	\$4,826K	\$4,957
Sumner Village	\$1,500	\$925K	\$542K	\$3,524K	\$1,682K	\$175K	0	0	0	0
Sydenham	0	0	\$264K	\$804K	\$2,283K	\$2,691K	\$688K	0	0	0
Ferry Road	\$1,563K	\$3,516M	\$209K	\$1,820K	0	0	0	\$454K	0	0
Edgware Village	\$50K	0	0	\$427K	\$1,469K	0	0	0	0	0
Linwood Village	\$27K	0	\$313K	\$1,507K	0	0	0	0	0	0
Main Road	\$190K	\$138K	\$126K	\$827K	\$559K	\$219K	0	0	0	0
Selwyn Street	\$112K	0	0	\$741K	0	0	0	0	0	0
Lyttelton	\$51K	\$111K	\$132K	\$427K	0	0	0	0	0	0

BUDGET OVERVIEW continued

**Enliven Places Programme:** This programme (formally the Transitional City Programme) supports regeneration by encouraging and supporting the community to deliver projects and events that enliven and transform places to leave a lasting legacy. For more information, see [ccc.govt.nz/enliven-places-projects-programme](http://ccc.govt.nz/enliven-places-projects-programme).

**Enliven Places Grant Funding, City-making partners:** The Council supports Gap Filler, Greening the Rubble and Life in Vacant Spaces with a grant of \$100,000 for each organisation per year. This supports regeneration outcomes in Christchurch, the Council’s Strategic Priorities – particularly Strong Communities – and the Enliven Places Aims. (A full update on the partners is outlined in the *Central City Biannual Report*).

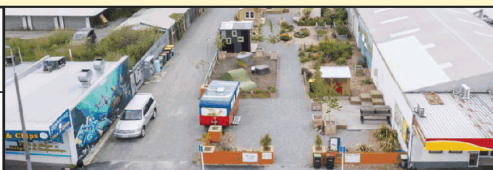
**Enliven Places Projects Fund:** Contestable grant funding that supports community-led projects to temporarily enliven Christchurch’s vacant spaces. For more information, see [ccc.govt.nz/enliven-places-projects-fund](http://ccc.govt.nz/enliven-places-projects-fund). Suburban projects which commenced between October and March are listed in the table below.

Cubbin Theatre	<b>Up and Away.</b> Theatre for babies and their carers performed at the Phillipstown Community Hub and the Old School in New Brighton.	39 Nursery Rd; 140 Seaview Rd	Complete	\$4,777
Kerry Tunstall	<b>Art Science Tent.</b> Free events themed around Art and Science at the Old School in New Brighton.	140 Seaview Rd	Complete	\$3,438
Renew Brighton	<b>Enliven Brighton.</b> A window display of upcoming summer events in New Brighton aligned with the “Shore Thing” calendar.	40 Brighton Mall	Ongoing	\$2,414
Renew Brighton	<b>RECREATE.</b> Activation of 40 Brighton Mall to include a showcase of works by the makers at the former school, as well as local artists	40 Brighton Mall	Ongoing	\$9,000
New Brighton Business Assn	<b>Rockabilly Show and Shine Street Party.</b> An opening evening event to kick-off the Rockabilly weekend in New Brighton.	Brighton Mall	Complete	\$2,900

**Enliven Places Rates Incentive for Property Owners:** supporting suburban property owners who allow their vacant sites (interior or exterior) to be used for temporary activations. For more information, see [www.ccc.govt.nz/rates-incentive](http://www.ccc.govt.nz/rates-incentive).

This financial year, approximately \$4,418 has been allocated for suburban projects from the City-wide 2018/2019 budget of \$45,000. The following three sites have been credited: **Collett’s Corner** in Lyttelton; **Tiny Shops** in Linwood; **Common Ground** in Southshore, New Brighton.


**Enliven Places Programme capital budget:** The programme has a modest capital budget to deliver new temporary capital assets. The following two suburban projects are being supported through the FY18/19 budget:

Linwood Tiny Shops	\$20K	
Richmond	\$30K	

**Shape Your Place Toolkit-related funding:** An operational budget of \$3.5K was offered to each of the respective community board’s Discretionary Response Funds. In the 1 Oct 2018—31 Mar 2019 period, the budget has been used to support the following projects:

- \$5,000 by the Fendalton-Waimairi-Harewood Community Board towards community activation of the old Bishopdale Library site.
- \$1,500 by the Halswell-Hornby-Riccarton Community Board towards another building for the Hei Hei/Broomfield Community Development Trust to provide and operate various community activities and community-building projects.
- \$2,500 by the Coastal-Burwood Community Board towards community activation of an empty section at the South Brighton roundabout (the “Common Ground” project).
- No expenditure by the other four Community Boards.

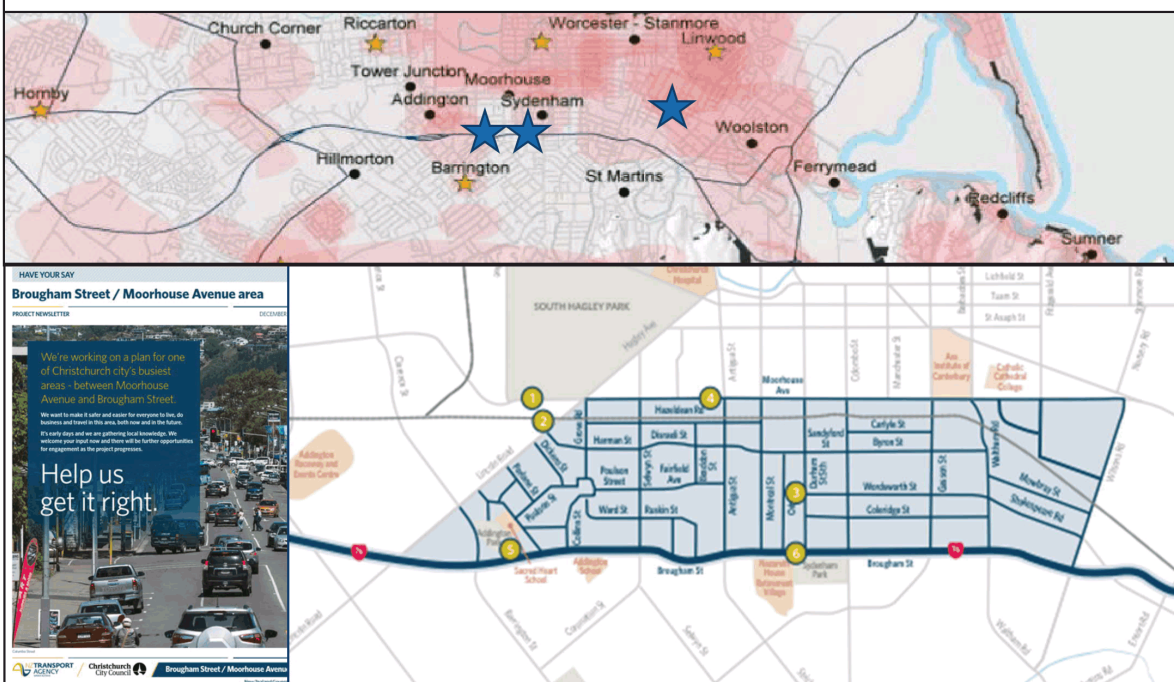
**PLACE-BASED PLANNING**  
A Decision Making Framework



## OTHER RELEVANT PROJECTS

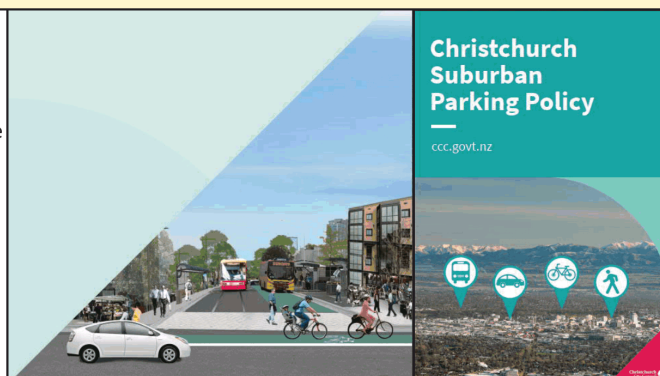
### Brougham Street / Moorhouse Avenue — collaboration

**Brougham Street / Moorhouse Avenue** — This is a partnership-based approach with New Zealand Transport Authority (NZTA). The project involves a 30 year strategy for the area between Moorhouse Avenue and Brougham Street/SH76, adopting an integrated transport and land use planning approach. The strategic response aims to improve the convenience and connectivity of walking, cycling and public transport, whilst addressing specific safety and travel time reliability issues affecting the operation of the transport system. The joint CCC-NZTA project team is aware of the interface with the master plans either within the project areas or nearby, e.g. Selwyn Street, Sydenham and Ferry Road.



### Suburban Parking Policy — Council-led

A Suburban Parking Policy was adopted by the Council on 28 February 2019 to provide a framework to guide future decision making for suburban parking management. The policy recognises the important role that suburban streets play for both residents and the city as a whole, providing space for a range of uses and competing demands. For more information see: <https://ccc.govt.nz/transport/parking/suburbanparking/>



### 'Liveable City' Community Outcome for vibrant thriving Central City, suburban and rural centres -

*Suburban and rural centres play an important role in providing accessible services for communities and are a focal point for social and economic activity. Well-designed centres are people focused, providing social hubs which meet the needs of the community.*

## 11. Smart Christchurch Programme Update

Reference: 19/271161

Presenter(s): Teresa McCallum, Programme Manager

### 1. Purpose of Report

- 1.1 The purpose of this report is for the Innovation and Sustainable Development Committee to be updated on the Smart Christchurch Programme. A presentation will be made to the Committee.

### 2. Executive Summary

- 2.1 Update on key projects and upcoming initiatives.

### 3. Staff Recommendations

That the Innovation and Sustainable Development Committee:

1. Receive the Smart Christchurch programme update.

### 4. Key Points

- 4.1 Trial status update
- Pedestrian Flow
  - Christchurch SmartView
  - Christchurch Free Wi-Fi
- 4.2 SoLGM Award for EQNet: Seismic Resilience as a Service
- 4.3 Post-trial update - Bigbelly Bins
- 4.4 Coming soon
- Parking Solutions
  - SmartView production launch
  - Smart Christchurch Commercial Framework
  - Smart Christchurch Website and Innovation Hub
- 4.5 No actions are required from the Committee and these updates are provided for your information.

### Attachments

No.	Title	Page
A <a href="#">↓</a>	Smart Christchurch Programme Update	49

### Confirmation of Statutory Compliance

Compliance with Statutory Decision-making Requirements (ss 76 - 81 Local Government Act 2002).

(a) This report contains:

- (i) sufficient information about all reasonably practicable options identified and assessed in terms of their advantages and disadvantages; and

- (ii) adequate consideration of the views and preferences of affected and interested persons bearing in mind any proposed or previous community engagement.
- (b) The information reflects the level of significance of the matters covered by the report, as determined in accordance with the Council's significance and engagement policy.

### Signatories

<b>Author</b>	Teresa McCallum - Smart Cities Programme Manager
<b>Approved By</b>	Brendan Anstiss - General Manager Strategy and Transformation

# Smart Christchurch Programme Update

## Innovation & Sustainable Development Committee

26 June 2019

Teresa McCallum, Smart Christchurch Programme Manager

1

## Agenda

1. Trial status update
  - Pedestrian Flow
  - Christchurch SmartView
  - Christchurch Free Wi-Fi
2. SoLGM Award for EQRNet: Seismic Resilience as a Service
3. Post-trial update - Bigbelly Bins
4. Coming soon
  - Parking Solutions
  - SmartView production launch
  - Smart Christchurch Commercial Framework
  - 2 - Smart Christchurch Website & Innovation Hub

## Trial status update

- Pedestrian Flow
- Christchurch SmartView
- Christchurch Free Wi-Fi

3

## Pedestrian flow

- 1<sup>st</sup> Phase completed
  - Partnership with Monitoring & Research
  - Data being used by ChristchurchNZ
- Data
  - Reports on Council website <https://www.ccc.govt.nz/culture-and-community/christchurch/statistics-and-facts/facts-stats-and-figures/central-city-indicators/visitors-to-the-central-city/>
  - Raw data on Smart Christchurch page <http://smartchristchurch.org.nz/pedestrian-counting-trial/>
- Initiating 2<sup>nd</sup> Phase
  - Monitoring & Research and Urban Regeneration
  - Improved technology (real-time, reliable data)
  - More cameras in a greater number of locations

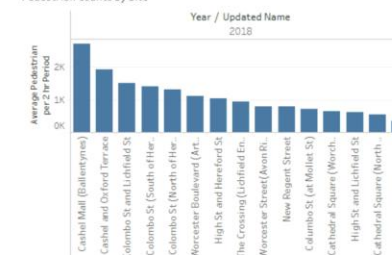
4

### Central City Pedestrian Counts

Source: Christchurch City Council, Central City Pedestrian Counts, January 2018

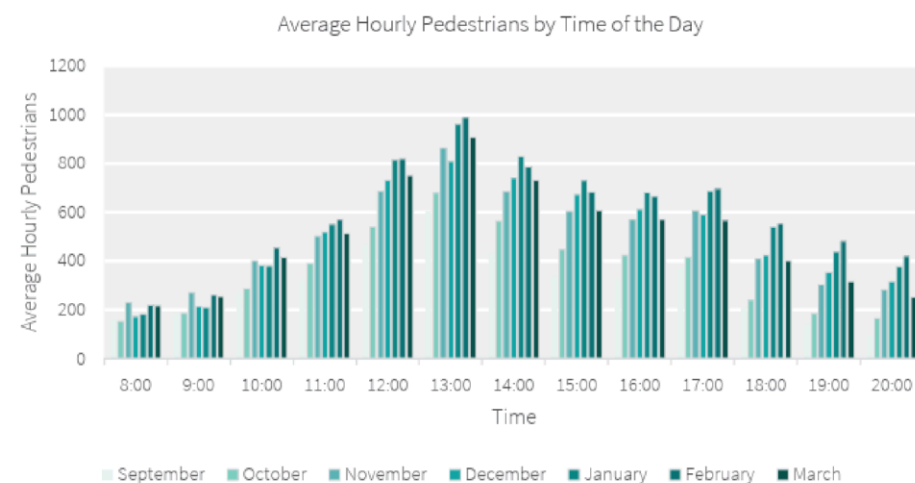
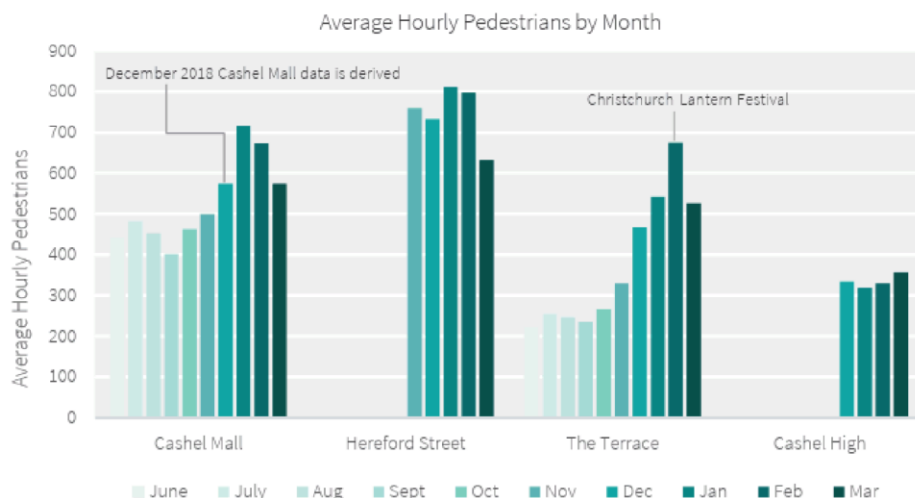


Pedestrian Counts by Site



Pedestrian Counts by Time of Day





\* Average of Cashel Mall, The Terrace, Cashel & High & Hereford Street sites

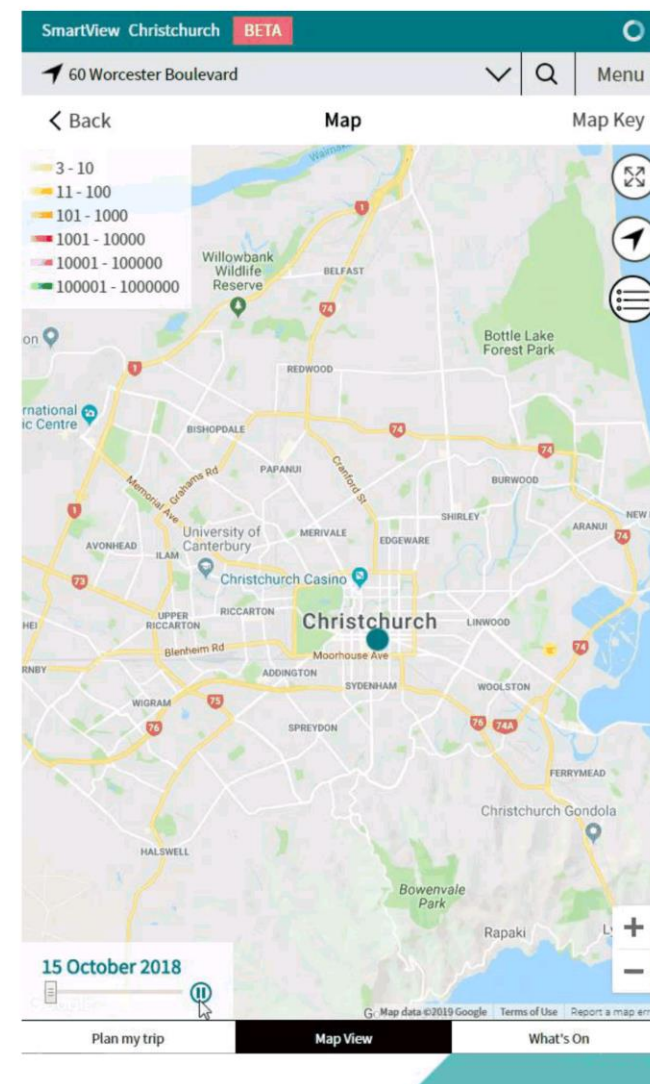
## Pedestrians in our retail areas...

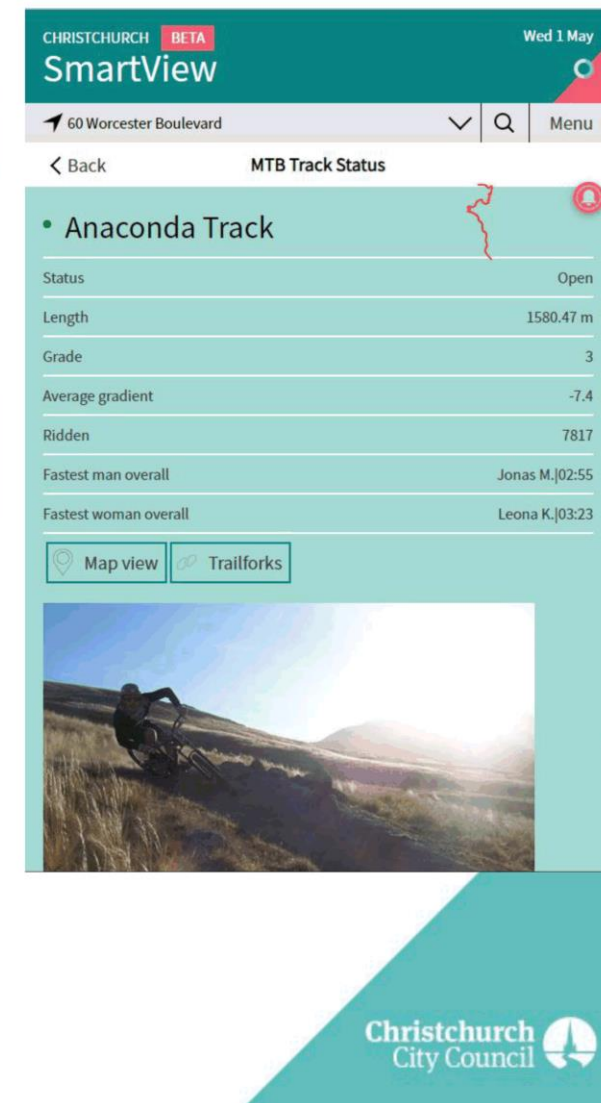
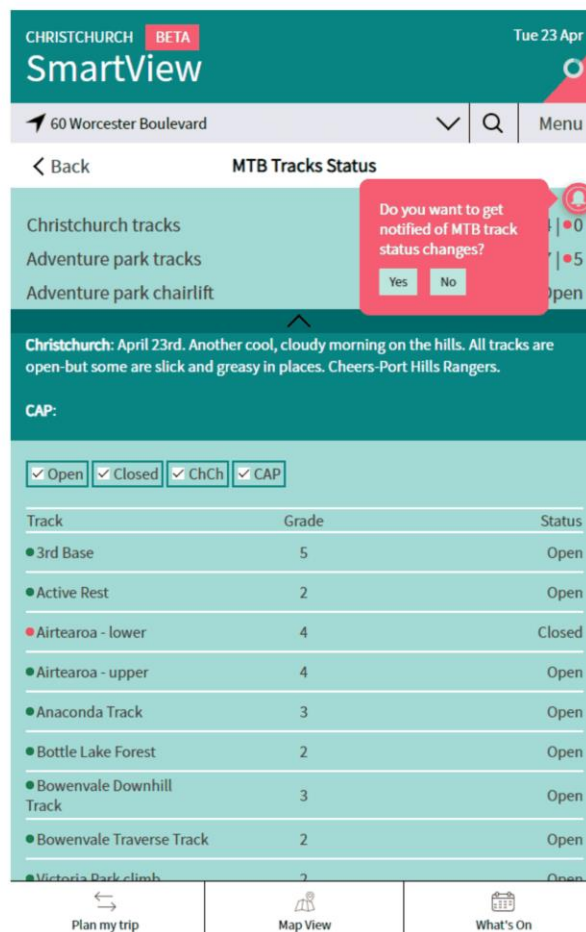
- Average of around 600 pedestrians per hour at Cashel Mall site over the summer period.
- Monitoring only began at the Cashel & High site in December, average pedestrians per hour has been consistent.
- Pedestrian numbers at The Terrace site have been growing over the summer period; highest recorded average in January (around 675 pedestrians per hour)
- Hereford Street is recording consistently high numbers (highest of all sites); average of around 700 pedestrians per hour since monitoring began.
- Retail areas tend to be busiest around midday both during the week and the weekends.
- Noticeably higher averages after 17:00 in both January and February.

## SmartView updates

- New Features
  - Scooter visualisation
  - Mountain bike tracks
  - Water consumption
  - Fire incidents
- SmartView data being used
  - Internal staff
  - Cycling advocates
- Replication
  - Hutt City
  - Tauranga
  - Dunedin

6





## SmartView data use

2019-  
03-04  
10:12:44



Hi Great initiative, well done. I am Acting Director City Presentation of Bayside Council in New South Wales, Australia. I would be very appreciative if I could correspond with the responsible or an appropriate personnel involved in this fabulous project. It is something that we were planning on doing and I have just come across your initiative on the internet whilst on holiday in Christchurch. Kind Regards, Joe Logiaccio

joe.logiaccio@bayside.nsw.gov.au

Luke F says:

March 19, 2019 at 10:13 am

I'm glad to be part of these statistics for the last year and a half. And as of Feb my wife has also joined the catalyst).

Great to see so many people out and about using the cycleways/ shared paths.

REPLY

GlenK says:

March 19, 2019 at 10:17 am

Great to see the uptick: we're seeing similar growth patterns in Christchurch as the network rolls out here (see

<https://smartview.ccc.govt.nz/#map/layer/ecocounter/@172.62658,-43.53288,13> – can also see/download data at each site right back to their installation).

Capturing e-scooter numbers is useful to see as well, but I would like to think that they can still separate out the figures as desired (in the same way that road counters can differentiate cars vs trucks) so that we can still understand the growth in cycling alone.

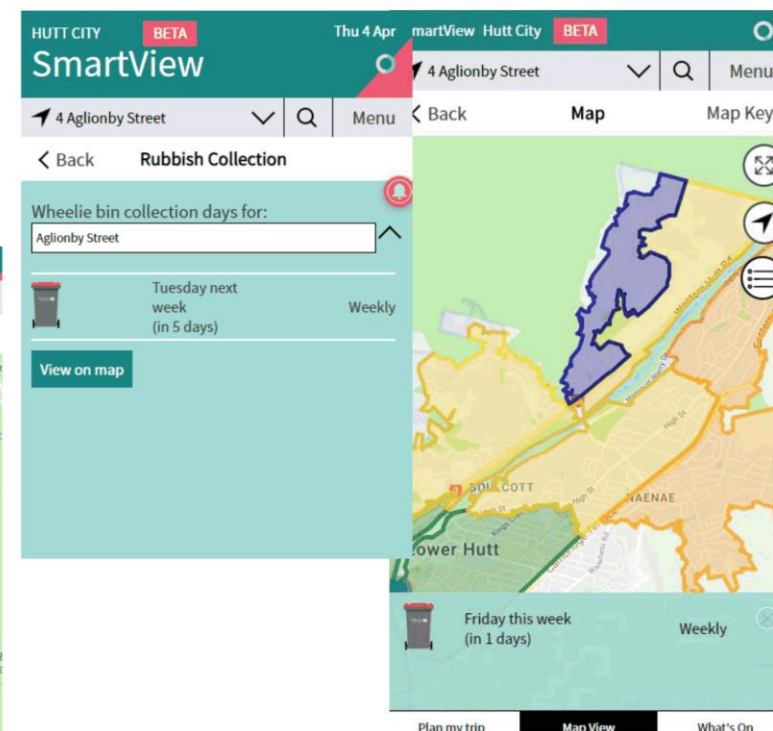
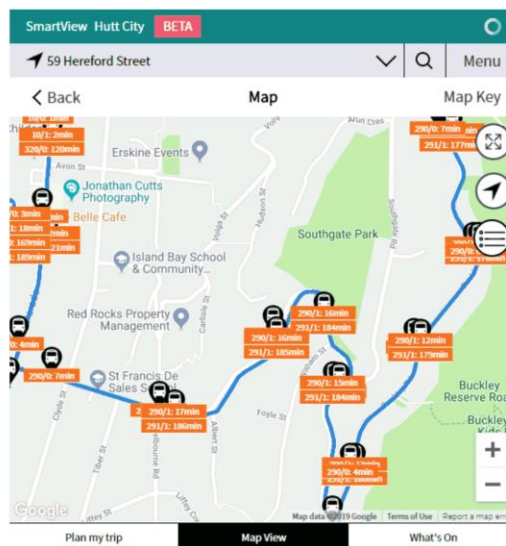
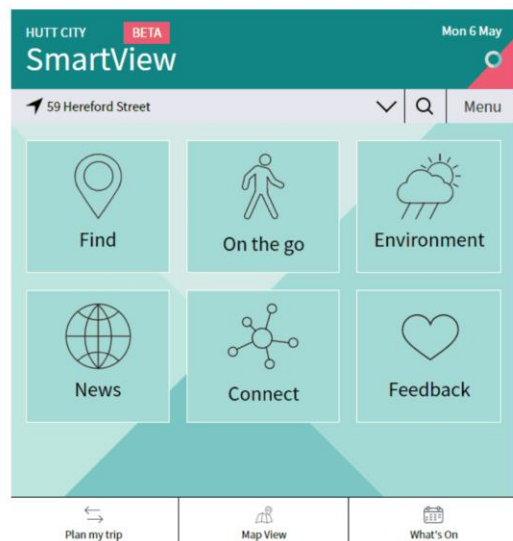
iezza says:

There's still a lot more that could be done. Some of the sensors have been in for much longer than 6 months, so I think council must have data going back further at some locations. I can't find it anywhere online but if anyone knows how to get access to it I'd love ... [Continue reading Cycle Counts February 2019](#)

Yea thanks Michel, I did see your email, just forgot to reply. I think the extra functionality you've added is absolutely brilliant! I have downloaded some csv files and have begun playing with some different types of graphs in excel. Some very interesting longer-term trends visible. Will post something on it in due course...

Thanks Michael, that is a brilliant data source and some great data going back a few years! I will certainly use that for an upcoming conf presentation in Brisbane...

## SmartView replication



2019-03-04  
10:12:44



Hi Great initiative, well done. I am Acting Director City Presentation of Bayside Council in New South Wales, Australia. I would be very appreciative if I could correspond with the responsible or an appropriate personnel involved in this fabulous project. It is something that we were planning on doing and I have just come across your initiative on the internet whilst on holiday in Christchurch. Kind Regards, Joe Logiacco

joe.logiacco@bayside.nsw.gov.au

## ‘Christchurch Free’ Wi-Fi

- Current status
  - Project Manager started 23 May
  - Cathedral Square
  - Spark & Enable
- Next steps
  - Central City Activation Plan action
  - Formal partnership required
  - Extending to New Brighton
  - Metro Sports Facility



## 2019 SoLGM Award Winner

- GHD Advisory Award for Innovation in Asset and Infrastructure Management

11

## EQRNet: Seismic Resilience as a Service for New Zealand

- Winner - GHD Advisory Award for Innovation in Asset and Infrastructure Management (SoLGM)
- EQRNet has already extended to Waimakariri District Council and Hutt City Council. There are also discussions underway with several other district councils and commercial organisations.
- Interest from from the Local Government Minister, Hon Nanaia Mahuta



## Post-trial update

- Bigbelly bins one year after trial completed

## Post-trial update: Bigbelly bins

- Sumner (5)
  - 2 in Scarborough Playground
  - 1 outside the café in Scarborough
  - 2 at Cave Rock
- New Brighton Whale Pool playground (2)
- Akaroa freedom camping area (1)
- MBIE funding application to install six bins with built in Wi-Fi functionality in Akaroa



14

## Coming soon

- On-street parking solutions
- SmartView production launch
- Commercial Framework
- Website & Innovation Hub

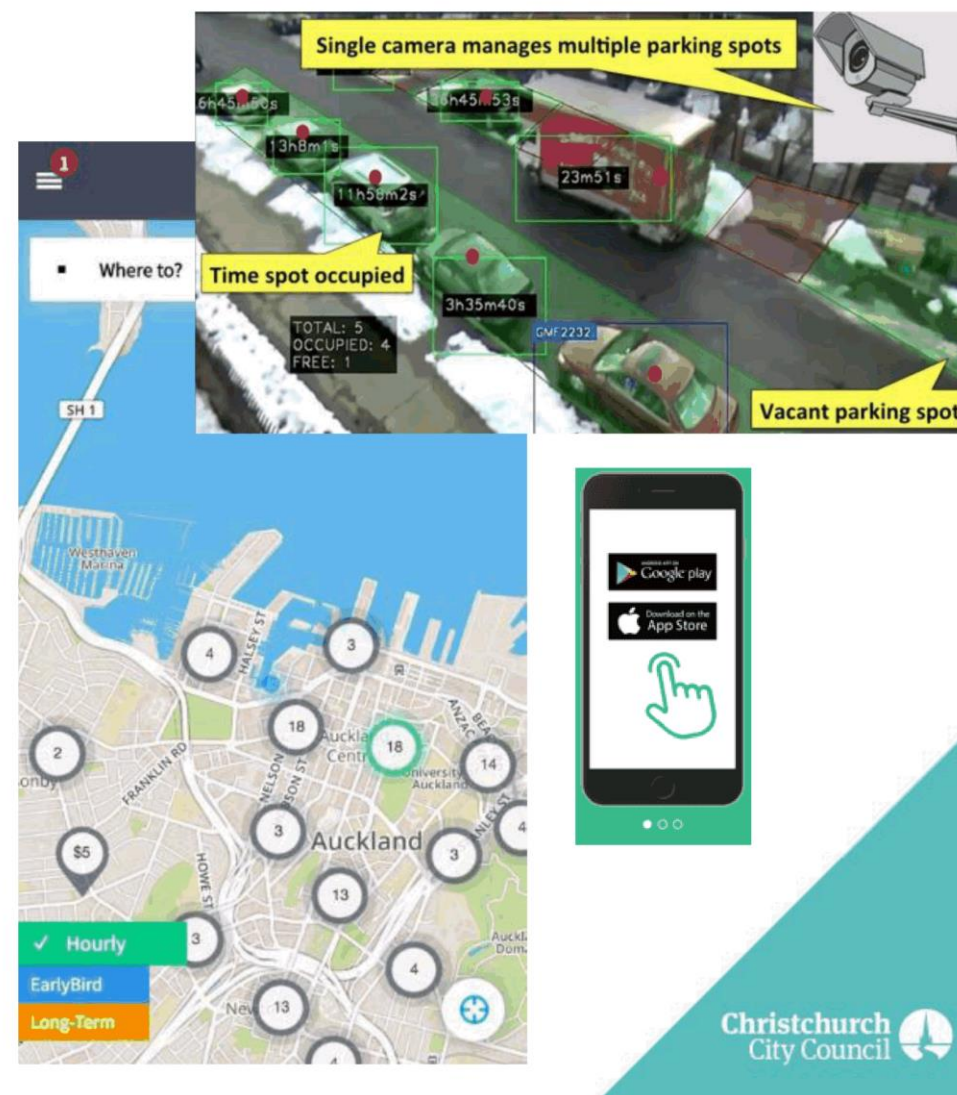
15

## On-street parking solutions

- Parking payment app
- Parking capacity for way finding

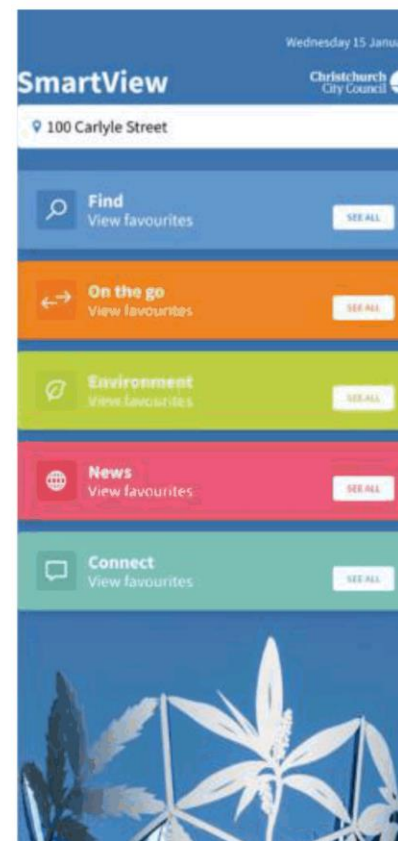
The Crossing - 71 Lichfield St	236 free		
The Hereford Street Carpark	140 free		
Lichfield Street car park building	104 free		
The West End Carpark	61 free		
Art Gallery car park building	21 free		

16



## SmartView production launch

- Brand refresh implemented by June 30
  - Collaboration with design and branding teams
- Beta removed



17

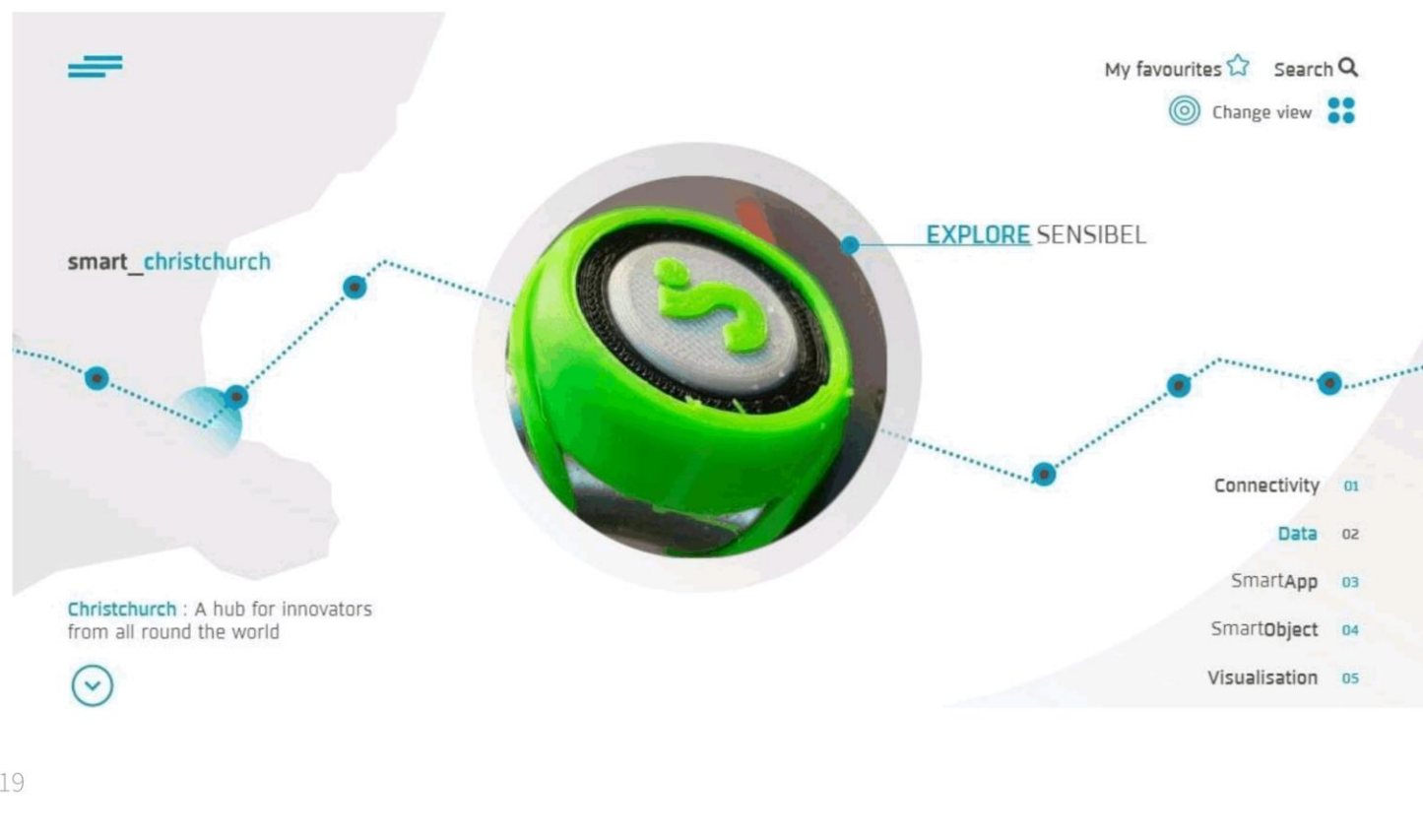
## Smart Christchurch Commercial Framework

- Deliver the Smart Christchurch vision
- Complement all agencies' programmes and existing commercial arrangements
- Attract investment and stimulate opportunities within the city
- Reduce ratepayer burden



18

## Website



19

## Innovation Hub

- Putting innovators in touch with opportunities
  - Platform for Smart Christchurch to access innovation
  - Tells the Christchurch innovation story
  - Supports local innovators



**SOLUTIONS BY INDICATOR**

Smart Economy	Smart Environment	Smart Government	Smart Living	Smart Mobility	Smart People
<b>Search</b> Search for and view smart city solutions in our database and filter results by different smart city indicators.		<b>Add solutions</b> Add new solutions to the database and edit/modify your solutions.		<b>Share</b> Share solutions on social media platforms or by email with colleagues, business partners or other interested parties.	
<b>Smart</b> Label solutions as being smart to indicate smartness of solutions to other members.	<b>Follow</b> Follow solutions to add them to your favorites list for quick access.		<b>Chat Support</b> Use our chat support to directly get in touch with us regarding suggestions, feedback or questions you might have.		

Christchurch City Council

## 12. Enliven Places Projects Fund - Grant Approval - Little Andromeda 2019

Reference: 19/654416

Presenter(s): Brindi Joy – Transitional Projects Advisor

### 1. Purpose of Report

- 1.1 For the Innovation and Sustainable Development Committee to seek a Council funding decision of \$49,855 for Andromeda Arts Trust to deliver Little Andromeda 2019.

### 2. Executive Summary

- 2.1 The Enliven Places Projects Fund received an application for \$49,855 for Little Andromeda 2019 from the Andromeda Arts Trust in the 2018/2019 financial year.
- 2.2 The application for a 6-week pop-up theatre in the central city business core aligns with the Fund's Terms of Reference and will support the Council's Strategic Priorities, Central City Action Plan and Draft Arts Strategy.
- 2.3 Little Andromeda 2019 will support a diverse mix of performing arts groups by providing an affordable central city performance space, as well as sustainable remuneration model for the performers (see paragraph 4.2). The Project will create over 40 opportunities (live performances) for an estimated 5,000 visitors to spend time in, and explore, the central city. Therefore, funding is recommended.
- 2.4 The application was received late in the financial year and the Enliven Places Projects Fund was fully allocated for 2018/2019. The application has been assessed against the Fund's Terms of Reference. It is recommended funding is allocated from the Urban Design, Urban Regeneration and Heritage Unit 2018/2019 operational budget underspend. Funding from the current financial year will enable the applicant more lead in time to plan the project and ensure the Fund begins the new financial year with the full budget of \$150,000.

### 3. Staff Recommendations

That the Innovation and Sustainable Development Committee recommend that the Council:

1. Provide a grant of \$49,855 to the Enliven Places Projects Fund application Little Andromeda 2019.
2. That funding is allocated from the 2018/2019 Urban Design, Urban Regeneration and Heritage Unit operational budget.

### 4. Background

#### Opportunity

- 4.1 The Enliven Places Projects Fund received an application for \$49,855 for Little Andromeda 2019 from the Andromeda Arts Trust. The application has been assessed against the Fund's Terms of Reference and funding is recommended.
- 4.2 The Project diversifies Christchurch's theatre and performance offering and contributes more to the city than its own activity. That includes supporting local creative performance groups and providing a no-risk platform for these groups to develop and present their work;

encouraging wider participation in the performing arts sector; and contributing economic benefit through show attendance and associated spending.

- 4.3 The Project also experiments with different layouts, locations and systems for fringe theatre in Christchurch, becoming a test case for a permanent small-scale venue for fringe theatre. This has not yet occurred in the central city regeneration.

### Strategic Alignment

- 4.4 This report supports the [Council's Long Term Plan \(2018 - 2028\)](#):

4.4.1 Activity: Community Development and Facilities

- Level of Service: 2.3.1.1 Effectively administer the grants schemes for Council - 95% of reports demonstrate benefits that align to Council outcomes and priorities.

- 4.5 This report supports the aims of the [Central City Action Plan](#) by:

- Adding everyday activity into the heart of the central city that will add to its experience for visitors;
- Making use of premises that would otherwise be vacant;
- Providing reason for people to linger in the central city into the evening, which provides opportunities for retailers and hospitality businesses to leverage;
- Adding uniqueness that can be marketed as a point of difference from other centres.

- 4.6 This report supports the [Draft Strategy for Arts and Creativity in Ōtautahi Christchurch 2019-2024](#), including:

4.6.1 Create and Encounter – support opportunities to create and to experience the arts across a range of places and spaces so that a diversity of art forms and of cultures are visible, ideas can be tested and shared, and the city and region is activated. Key actions look like this:

- Ensure that there is access to a range of affordable and interesting spaces to develop and present work
- Increase opportunities to present a range of arts forms through exhibitions, events and festivals

### Decision Making Authority

- 4.7 Applications to the Enliven Places Projects Fund are considered against the Fund's Terms of Reference and funding decisions must follow agreed delegated authority. Delegated authority is:

- Up to \$15,000: Head of Urban Design, Urban Regeneration and Heritage
- Greater than \$15,000: full Council

### Previous Decisions

- 4.8 The Applicant received \$14,970 from the Enliven Places Projects Fund in 2018/2019 for Little Andromeda 2018 to support capital and operational costs.
- 4.9 A description of the Fund, its evaluation and eligibility criteria, and a snapshot of funded applications is published on [the Council website](#).

### Assessment of Significance and Engagement

- 4.10 The decision in this report is of low significance in relation to the Christchurch City Council's Significance and Engagement Policy. The level of significance was determined by considering

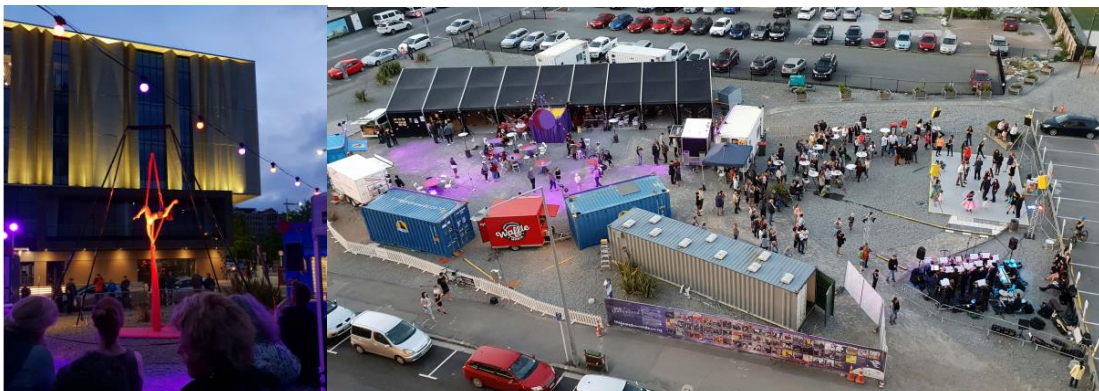
the size of the grant and the nature of the application recommended for funding, and the delegated authorities established by the Council.

### Enliven Places Projects Fund

- 4.11 The [Enliven Places Projects Fund](#) (formally the Transitional City Projects Fund) was established in 2012 to support the city's recovery by lowering barriers and encouraging light-touch projects that help bring life back into the city. Projects take place in vacant spaces. Vacant is defined as indoor or outdoor sites awaiting development or tenants. The Fund is unique to Christchurch and represents one of the successful recovery investments initiated by Council following the earthquakes. The Fund continues to support regeneration.
- 4.12 Since 2014, the Fund has seen a shift in applications away from small projects that require less funding (\$0-\$5,000). Many applicants are now delivering higher quality projects with greater community outcomes. Funding requests often reflect this (\$5,000-\$15,000+).
- 4.13 All applications to the Fund are assessed against the Fund's Terms of Reference by an inter-disciplinary staff Panel.
- 4.14 The Fund has been well utilised to date with total annual expenditure of 95% since 2012, supporting projects including *Ka Awatea*, *New Regent Street Summer of Music*, *Plain Sight Augmented Street Art App*, and *Arts Centre Mākata and Pop Up Art Exhibition*.
- 4.15 A budget of \$150,000 was allocated to the Fund in the 2018/2019 financial year. The Fund has been fully allocated and will renew 1 July 2019 with \$150,000.
- 4.16 The Fund's legacy is a diverse range of projects that individually and collectively encourage a culture of creativity, innovation, experimentation and volunteering. This in turn means a range of short and long term outcomes for community wellbeing, our sense of place and the local economy.

### Little Andromeda 2018

- 4.1 Little Andromeda is led by the Andromeda Arts Trust with Project Lead and Manager, Michael Bell, who has extensive experience establishing and operating successful arts businesses, including: New Zealand's second largest recording studio in New Zealand, Orange Studio; New Zealand Playhouse in 2009, a touring theatre company in NZ and Australia. Michael developed the business plan for Andromeda Theatre in 2015.
- 4.2 [Little Andromeda](#) took place on 4 October – 17 November 2018. The Project transformed a vacant exterior site on the corner of Colombo and Gloucester Streets in the Performing Arts Precinct. The 300-seat pop-up theatre located in a tent and tested a casual, low-risk and accessible performing arts venue with a diverse six week programme. The theatre was run on a non-profit basis with a joint-venture model (75% of ticket sales returned to the performers, 25% supported running costs).



**Figures 1 & 2:** Little Andromeda pop-up from 2018 on the corner of Colombo and Gloucester Streets. Over 7,000 attendees visited over the six week run. Little Andromeda transformed an outdoor site into a vibrant, buzzing, central city attraction.

- 4.3 The Applicant leveraged the Council's funding support of \$14,970 from the Enliven Places Projects Fund to deliver a project valued at \$200,000. The Applicant exceeded the agreed outcomes for the proposal with a diverse group of 50 community and international performing arts groups (680 individual performers), 92 performances, 7,000 attendees and over 2,000 volunteer hours.
- 4.4 The Project diversified Christchurch's theatre and performance offering by creating a venue for community and suburban performing arts groups to have a central performing arts venue, also providing a "bumping space" and awareness of other groups. It supports the creative community (performance) as well as the public (something to do).
- 4.5 Council staff have received reporting for Little Andromeda 2018, which exceeded the agreed outcomes.

## 5. Current application

- 5.1 The Council's Events and Festivals Fund initially received a variation of this application. Staff Advisors for both the Events and Enliven Funds discussed the merit of the Project. Staff agreed a better alignment with the Enliven Places Projects Fund, as this fund has specific criteria to support temporary projects to effectively activate vacant spaces. However, the level of funding request in the current application is consistent with other Events and Festivals Funded events, including the 2018/2019 funded opening event for *SCAPE* and the 3-day International Jazz and Blues Festival. In 2017/2018 the Enliven Places Projects Fund supported *Ka Awatea* at a total of \$46,940 for a six month programme of art and culture activity at the future Lyttelton Museum site on London Street.
- 5.2 To meet the application request, it is recommended that this Project is funded from the Urban Design, Urban Regeneration and Heritage Unit's 2018/2019 operational budget. Funding from the current financial year will enable the applicant more lead in time to plan the project and ensure the Fund begins the new financial year with the full budget of \$150,000.

### Little Andromeda 2019

- 5.3 The current application seeks \$49,855 in funding to support the set-up costs for the pop-up theatre for six weeks beginning in October 2019. The proposed location is an indoor, as-yet untenanted vacant site in the central city business core. The site will be fitted-out with a 100-seat theatre with toilets and a bar.
- 5.4 The Project will host a minimum 40 performances, 50 performing arts groups and 5,000 attendees. While offering significant benefits to the central city, Little Andromeda 2019 offers excellent return on Council investment. The total request represents 22% of the estimated \$226,017 to deliver the Project. Partnership is demonstrated with remaining requirements met through a mix of in-kind and funding support.
- 5.5 Little Andromeda 2019 will:
  - Have the same financial model as in 2018: non-profit and joint-venture (75% of ticket sales returned to the performers, 25% supported running costs). Ticket prices will be kept free or affordable to lower barriers of accessibility. Average ticket price will be \$10 - \$15.
  - Run regular performances, ensuring regular activity and foot traffic. Back-to-back performances are proposed for weekends, from lunchtime until 11.30pm. Weekdays will

offer lunchtime entertainment, theatre for toddlers and retirees, as well as providing a bookable and affordable space for rehearsals and festivals.

- Consider extending the Project timeframe beyond six weeks if the Project income proves sufficient.

5.6 Little Andromeda 2019 will adapt to lessons learned during Little Andromeda 2018, including:

- Test an indoor space so the venue is less affected by weather
- More lead-in time to plan and create buzz
- Reduce theatre size
- Seek a higher level of funding to support covering necessary costs, requiring less reliance on personal investment and volunteering

## 6. Community Views and Preferences

6.1 Given the feedback from 2018, it is likely that Little Andromeda 2019 will receive a similar or improved responses from performers and the public. Little Andromeda 2018 survey results included:

6.1.1 Attendee feedback:

- *Please rate your experience at Little Andromeda:* 93% responded “Fantastically Awesome”.
- *Rate the value for money of the show and overall time here:* 83% responded “Great prices”
- *Other comments included:* “Definitely be back, we need more of this” and “Actually think it’s awesome only downside is the weather dependant (semi)...” and “It’s a good central venue and it’ll be sad to see it go” and “Needs a flat floor, maybe real walls”. Face-to-face comment noted the free and low ticket costs made attending theatre possible.

6.1.2 Performer feedback:

- The joint-venture model benefited performers
- Little Andromeda provides the city with something truly unique: a diverse, safe, supportive, vibrant performing arts hub
- They’re ready to take part again in 2019

6.2 At the end of the project or funding period each applicant must prepare an accountability report that describes how the community or environment has benefited from the project and if any unspent funds are to be returned to the Council.

## 7. Legal Implications

7.1 If funded, a standard Grant Funding Agreement approved by the Legal Service Unit will be used for this Project.

## 8. Risks and Responsibilities

8.1 Risks specific to this Project will be managed through the Grant Funding Agreement. The main risks relate to Project delivery time or scope changes and reputational risks to Council.

8.2 The Applicant is responsible for securing all necessary approvals/consents, licenses and health and safety.

## 9. Next Steps

- 9.1 The applicant will be notified within 24 hours about the decisions made by the Council.

## Attachments

There are no attachments to this report.

## Confirmation of Statutory Compliance

Compliance with Statutory Decision-making Requirements (ss 76 - 81 Local Government Act 2002).

(a) This report contains:

- (i) sufficient information about all reasonably practicable options identified and assessed in terms of their advantages and disadvantages; and
- (ii) adequate consideration of the views and preferences of affected and interested persons bearing in mind any proposed or previous community engagement.

(b) The information reflects the level of significance of the matters covered by the report, as determined in accordance with the Council's significance and engagement policy.

## Signatories

<b>Author</b>	Brindi Joy - Transitional Projects Advisor
<b>Approved By</b>	Carolyn Ingles - Head of Urban Regeneration, Design and Heritage Brendan Anstiss - General Manager Strategy and Transformation

## 13. Resolution to Exclude the Public

*Section 48, Local Government Official Information and Meetings Act 1987.*

I move that the public be excluded from the following parts of the proceedings of this meeting, namely items listed overleaf.

Reason for passing this resolution: good reason to withhold exists under section 7.

Specific grounds under section 48(1) for the passing of this resolution: Section 48(1)(a)

### Note

Section 48(4) of the Local Government Official Information and Meetings Act 1987 provides as follows:

“(4) Every resolution to exclude the public shall be put at a time when the meeting is open to the public, and the text of that resolution (or copies thereof):

- (a) Shall be available to any member of the public who is present; and
- (b) Shall form part of the minutes of the local authority.”

This resolution is made in reliance on Section 48(1)(a) of the Local Government Official Information and Meetings Act 1987 and the particular interest or interests protected by Section 6 or Section 7 of that Act which would be prejudiced by the holding of the whole or relevant part of the proceedings of the meeting in public are as follows:

ITEM NO.	GENERAL SUBJECT OF EACH MATTER TO BE CONSIDERED	SECTION	SUBCLAUSE AND REASON UNDER THE ACT	PLAIN ENGLISH REASON	WHEN REPORTS CAN BE RELEASED
14	PUBLIC EXCLUDED INNOVATION AND SUSTAINABLE DEVELOPMENT COMMITTEE MINUTES - 20 MAY 2019			REFER TO THE PREVIOUS PUBLIC EXCLUDED REASON IN THE AGENDAS FOR THESE MEETINGS.	
15	INNOVATION AND SUSTAINABILITY FUND	S7(2)(C)(II)	PREVENT DAMAGE TO THE PUBLIC INTEREST	POINTS TO BE DISCUSSED ARE COMMERCIALY SENSITIVE.	ONCE THERE IS NO LONGER ANY COMMERCIAL SENSITIVITY RELATING TO ANY OF THE APPLICATIONS.