

Waimāero
Fendalton-Waimairi-Harewood Community Board
MINUTES ATTACHMENTS

Date: Monday 15 April 2019
Time: 4.30pm
Venue: Ōrauwhata, Bishopdale Community Centre Hall
13P Bishopdale Court, Bishopdale

TABLE OF CONTENTS	PAGE
4.1 Public Forum	
A. Community Energy Action Presentation	3

Community Energy Action

Charitable Trust

Creating healthy
living and working
environments for
our community for
25 years

Caroline Shone, Chief Executive



Te Rōpu āhuru riaka iwi ki Otautahi

Our Services

- Insulation (subsidised and non-subsidised work)
- Help with earthquake damaged properties (North Canterbury and Marlborough)
- Independent energy advice for existing homes and new builds
- Free, recycled curtains
- Home Energy Checks
- Affordable energy efficient products
- ECAN - Heathier Homes Targeted Rates Programme



The Curtain Bank

- Curtains donated by public and retail businesses
- Free, recycled curtains
- Thermal layer to windows, adds comfort and warmth
- Privacy in the home
- Better light and temperature control in the home
- In 2018, the Curtain Bank
 - saved 19,000m² of curtain fabric from landfill
 - curtained nearly 900 households
- Mobile Curtain Bank Van





Public Display Room

Open Monday to Friday, 9am – 4.30pm
at 299 Tuam Street, Christchurch.

We also utilise this space for educational presentations and demonstrations to community groups and organisations.



Effects of cold, damp homes

- People get sick more often
 - Reduced productivity
 - Increased number of sick days
 - Businesses affected
 - Lower academic results for students
 - Financial stresses for households
- More likely to end up in hospital
 - Adds pressure to hospitals and GP's
- Overall wellbeing deteriorated, particularly mental health with added stresses.



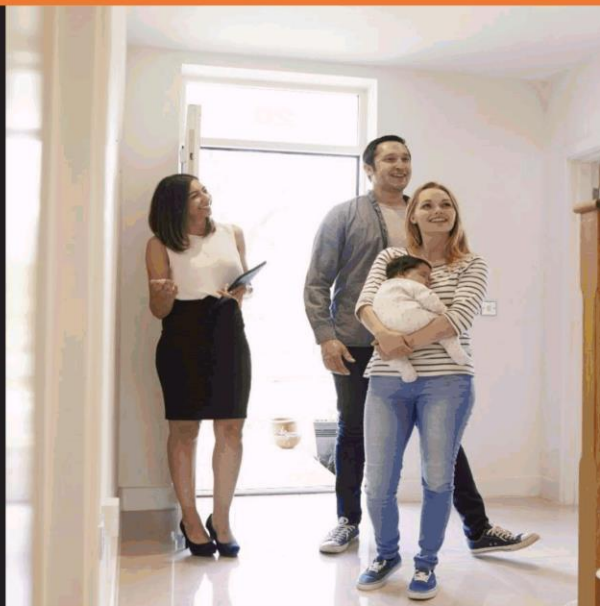


State of the Nation

- 50,000 – 80,000 homes have little or no insulation (Canterbury and West Coast)
- More than 100,000 households are experiencing energy hardship in NZ
- Without funding, insulation is unaffordable for many
- Rise in 'working poor'
- Government launched Warmer Kiwi Homes (\$142m 4-year programme mid-2018)

Rental Properties

- Residential Tenancies Act changes effective from July 2016:
 - Adequate insulation (by July 2019)
 - Correct installation of smoke alarms
 - Insulation Statement for new tenancies
- Subsidies for landlords ended June 2018
- CEA now working with Fire and Emergency NZ on their Home Fire Safety Visit Programme





Insulation Subsidies

Warmer Kiwi Homes Government (EECA) subsidies available.

Up to 92% off the costs of ceiling and underfloor insulation.

- Built before 2008, owner-occupied
- CSC holder, or area identified as lower-income (dep. 9 or 10)
- Heating subsidies to come mid-2019

CEA are the only Service Provider of this subsidy from Ashburton to Kaikoura.

Working with Environment Canterbury

- Non compliant fires
- Financial assistance available
- Ultra low emission fires, and heat pumps as replacement
- Clean burning advice and training
- Christchurch, Rangiora, Kaiapoi, Ashburton





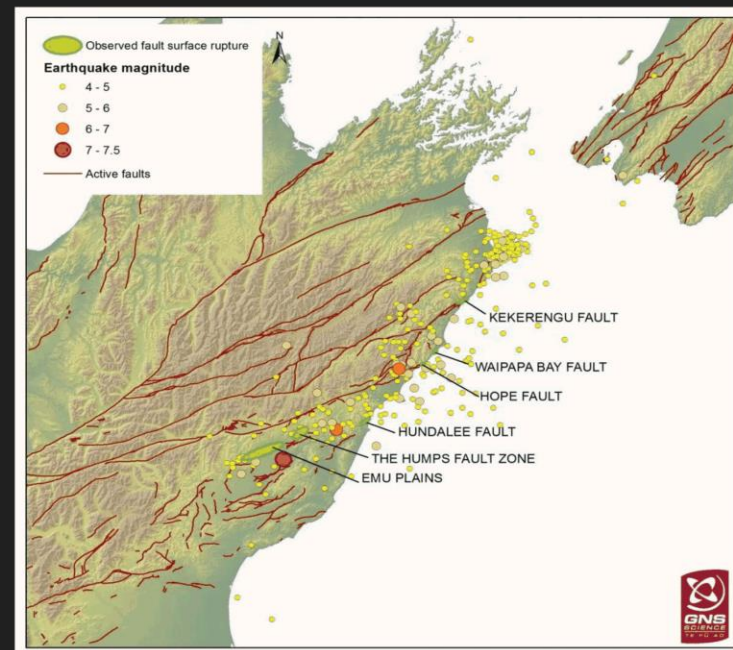
Heathier Homes Canterbury

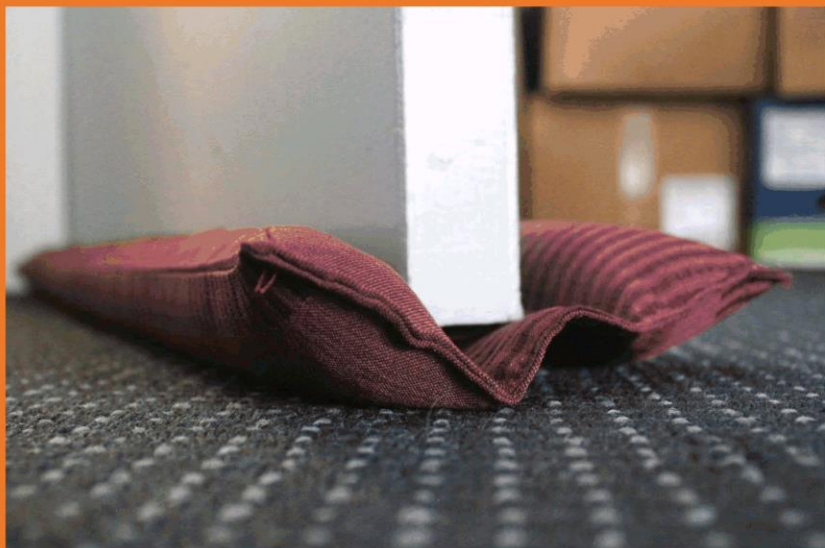
- Scheme provided by Environment Canterbury (ECan) offering low interest loans to eligible Canterbury ratepayers
- Towards to costs of insulation, simple ventilation, and heating
- Rate payments must be up-to-date (good history for over three years)
- Each ratepayer can only apply once
- \$500 to \$6,000 (including gst)
- 5.9% fixed interest rate for nine years (for those joining before 30 June 2019)
- Offered until 2028

North Canterbury Earthquake Hardship programme

- Continued partnership with NZ Red Cross, utilising Earthquake Appeal Funds.
- Focussing on:
 - Energy efficiency measures, including insulation and heating
 - Essential repairs for security, weather tightness and effective sanitation
 - Assistance with heating costs (gas, firewood, electricity)
- Programme extended until July 2019.
- As at 31 March 2019, 90% of available funding has been spent.
- Kaikoura, Hurunui, Marlborough districts.

Image: The Spinoff





Energy Efficiency Products

- DIY products for creating a healthier home:
 - Window kits (DIY double glazing)
 - Scoopys (remove condensation)
 - V-Seal (draught stop for doors and windows)
 - Door sausages (handmade by Curtain Bank volunteers)
 - Draught stop brush strip (external and internal doors)
 - Hot water cylinder wraps



Housing impacts for Older People

- By 2030, over 60's expected to represent 25.3% of NZ
- Elderly more likely to have health issues exacerbated by cold, damp homes
- Older people living in rental accommodation show higher mortality rates
- Many choose between heating the home or eating
- CEA has some funding available to assist elderly with insulation and/or heating

Healthier Homes Programme

- Housing is a key determinant of health
- Low indoor temperatures, dampness and mould is linked to poor health, particularly respiratory problems
- Good insulation, heating and sound energy efficiency advice can improve health
- Canterbury DHB developed *Healthy Homes programme* to keep people in their own homes and out of hospital
- Programme initially focussed on secondary care
- Extended to include primary care patients referred from GP's
- Over \$1.5m was split between the two elements of the programme



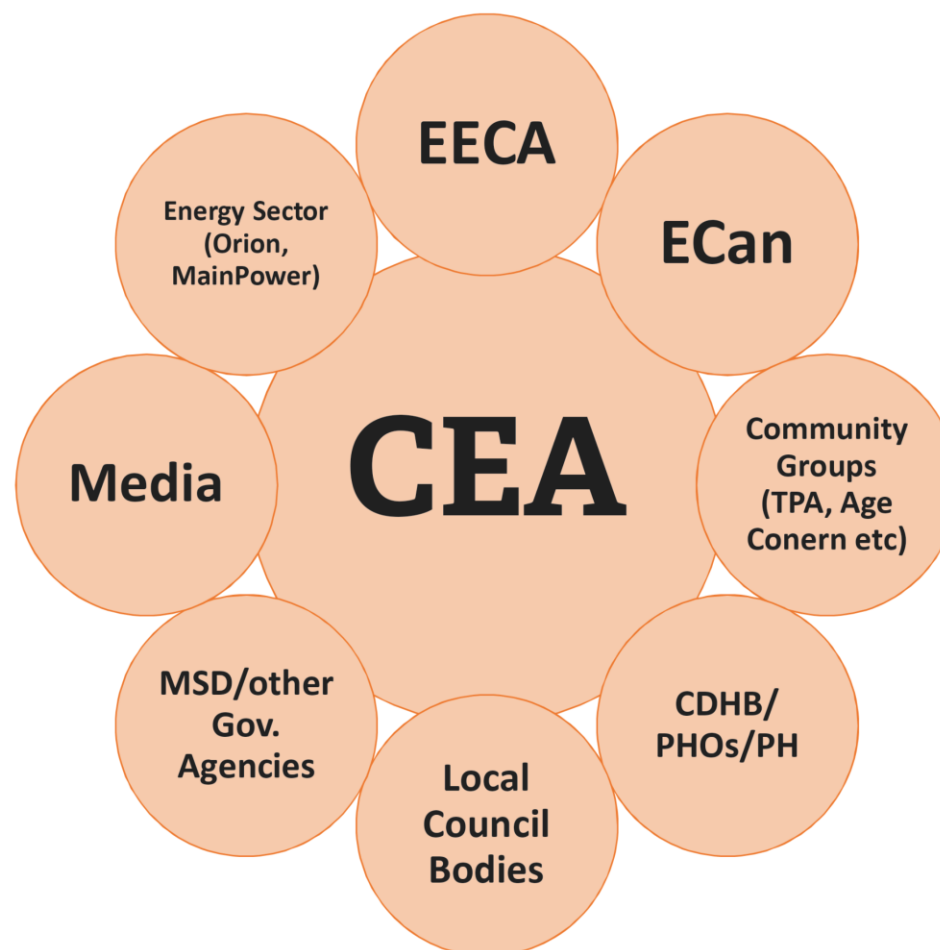
Healthier Homes Project Outcomes

- Project 2013-16 – CDHB, ECAN, CEA, EECA, Orion, Mainpower.
- Provided 1,500 insulation installations
- Over 450 households provided with heating appliances, curtaining, Home Energy Performance reports, helping change behaviours.
- This programme saved the CDHB over \$1m +
- Qualitative analysis;
 - The programme supported and reinforced existing data
 - Result of 'improved homes' positively impacts physical *and* mental wellbeing
 - Additional 'holistic' benefits for the whole family
 - More could be done; the programme could be replicated for other high health needs



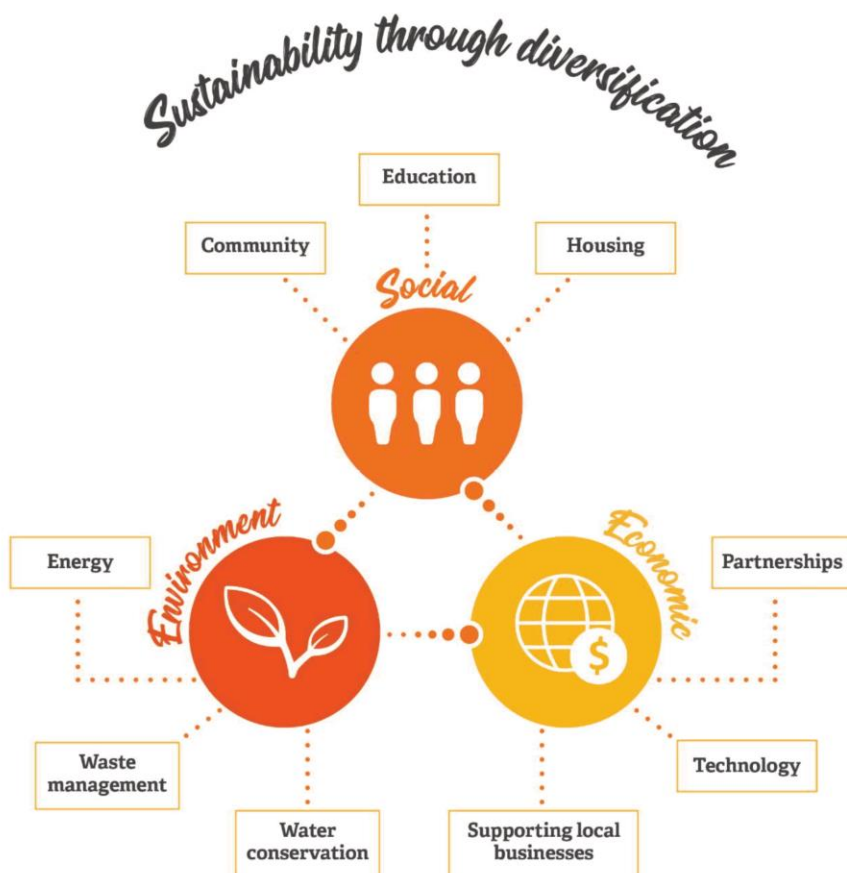
Collaborative Partnerships

Working together with organisation is how we are going to achieve the **greatest impact and change** for our community.



Our Partners, Funders and Supporters





Looking to the future

- Non-Government organisations important intermediaries between households and Government
- CEA's ongoing focus to improve living environments
- Holistic approach, indoor and outdoor, with a focus on sustainability
- Collaborative partnerships proven successful to achieve effective outcomes

Community Energy Action

Charitable Trust

0800 GET WARM

info@cea.co.nz

299 Tuam Street

www.cea.co.nz

Thank you for your time



Te Rōpu āhuru riaka iwi ki Otautahi

Find us on

