

Christchurch City Council
MINUTES ATTACHMENTS

Date: Wednesday 3 June 2026
Time: 9.31 am
Venue: Camellia Chambers, Civic Offices,
53 Hereford Street, Christchurch

TABLE OF CONTENTS NGĀ IHIRANGI	PAGE
8. Monthly Report from the Community Boards - May 2026	
A. Waipapa Papanui-Innes-Central Community Board - Presentation to Council.....	3
B. Waipuna Halswell-Hornby-Riccarton Community Board - Presentation to Council.....	15
C. Waitai Coastal-Burwood-Linwood Community Board - Presentation to Council	22
D. Te Pātaka o Rākaihautū Banks Peninsula Community Board - Presentation to Council	27
E. Waihoru Spreydon-Cashmere-Heathcote Community Board - Presentation to Council	31
F. Waimāero Fendalton-Waimairi-Harewood Community Board - Presentation to Council	37
3.1.1. Public Forum - Vanessa Weenink	
A. Vanessa Weenink - Presentation to Council.....	43
3.1.2. Halswell Residents' Association	
A. Halswell Residents' Association - Presentation to Council	45
15. Mayor's Monthly Report	
A. Mayor's Monthly Report	47

Waipapa Papanui-Innes-Central Community Board Report to Council for April & May 2026



Presenters: Dr Sunita Gautam and Simon Britten

3 June 2026

Public Forum

13 April 2026

- Libby Greaves – YDF report back on competing in the NZ Rowing and Beach Spring Championships in Auckland (*top*)
- Virginia Irving - works and truck movements associated with the Grassmere development and infrastructure projects (*centre*)

11 May 2026

- St Albans Residents Association - traffic concerns around Cranford Street, north of Innes Road
- Erin McGill - traffic issues around Francis Ave

Briefing

 ecan.govt.nz/metroreview

- Environment Canterbury (ECan) – Public Transport Network Review (*bottom*)



Community Liaison

Summer with your neighbours

- Cherrywood Place (top left)
- Moa Reserve (top right)
- Weston Road (bottom left)
- Stapletons Road (bottom right)



Strengthening Communities Together
Enabling active and connected communities to own their futures

Community Liaison

Community Events

- Te Whare Roimata Cultural Day *(top)*

- Shirley 'Shine' *(bottom)*



Strengthening Communities Together
Enabling active and connected communities to own their futures

Community Liaison

- Shirley Village Project – Oak seat from the Emmet Street Oaks, a new instalment at the Neighbourhood Centre (*top*)



Strengthening Communities Together
Enabling active and connected communities to own their futures

Community Liaison

Parks Update

- Olliviers Reserve
- Welcome Rest
- Lewisham Reserve
- Petrie Park
- Essex Reserve



Olliviers Reserve



Essex Reserve: 'before and after'

Strengthening Communities Together
Enabling active and connected communities to own their futures

Community Liaison

Richmond Gala 2026



Strengthening Communities Together
Enabling active and connected communities to own their futures

Community Liaison

Packe Street Park and
Community Garden 30th
Anniversary



Strengthening Communities Together
Enabling active and connected communities to own their futures

Community Liaison

Te Ora Hou Community Day



Strengthening Communities Together
Enabling active and connected communities to own their futures

Community Liaison

Anzac Day Memorial

“Lest we forget”



Strengthening Communities Together
Enabling active and connected communities to own their futures

Board Plan

Waipapa Papanui-Innes-Central
Community Board Plan 2026-28
adopted prioritising:

- An Integrated Transport Network for the Waipapa Board
- Thriving, Safe and Prepared Communities
- Urban Growth and Community Planning
- Grassmere Development
- Papanui Youth Project
- Macfarlane Park
- Westminster Park
- Phillipstown Hub
- Greening the East 2.0



Thank you!



Waipuna Halswell-Hornby-Riccarton Community Board Report to Council – 3 June 2026

Te kaipāhō (Presenters): Marie Pollisco, Chairperson



1



2

Community Board Plan Priorities

- Cashmere Road Renewal between Sutherlands Road and Halswell Quarry
- Dunbars Road Renewal
- Advocate for signal lights at the Halswell Junction Road / Nicholls Road Intersection
- Support the Hornby MenzShed to secure a permanent home





3

Community Board Plan Priorities

- Fit for purpose Community Facilities and Parks
- Hornby – Transport Improvements
- Central Riccarton Revitalisation
- Smarter Transport: Traffic Optimisation
- Increase Greenspace and Tree Canopy Cover



Halswell Community Garden

The Halswell Community Garden Open Day was a successful and enjoyable event, with visitors welcomed to explore the garden, share food, and discuss future plans.



Te Reo and Te Ao Māori session

Community leaders and representatives attended a session delivered by Reo Māori Mai kaiako to further grow understanding of te ao Māori, gain confidence and understand key cultural values for working with mana whenua.



Mid Month Mahi

Halswell-Hornby-Riccarton Community Advisers have initiated Mid Month Mahi, an online series of workshops for people working in the community across the Board area.

Hornby Events

Residents in the Hornby area have had the opportunity to enjoy and take part in a wide variety of events and activities organised by various community organisations.



6

Thank you!

Waitai Coastal-Burwood-Linwood Community Board

Report to Council - June 2026

Presenters – Paul McMahon (Chair) & Jackie Simons (Deputy Chair)



Highlights from the Board Area

Waitai Coastal-Burwood-Linwood Board Priorities 2026-28

Support a new
Marshland
Community Centre

Reutilisation of the
Bromley
Composting Site for
Community

Reutilisation of the
Smith Street
Service Centre

Burwood /
Mairehau
Intersection
Improvements

Support Resilience
Planning

Rawhiti School
Minor Safety
Improvements

North Beach Car
Park and Freedom
Camping Issues

Wainoni Park
Lighting Upgrades

New Brighton Mall

Highlights from the Board Area



Advocacy

Our Purpose

To Strengthen connections and improve Christchurch City Councils relationship with Eastern Suburb communities.

Our Objectives

- Engage with community groups to foster a collaborative relationship with council, improving mutual understanding and trust
- Engage with community members to identify practical actions that Council can take to improve community infrastructure and development
- Collaborate with communities to develop effective disaster response strategies enhancing Council and community preparedness
- Engage with community groups to increase awareness and use of Council resources, enhancing their capacity to address community needs
- Increase community members awareness of Council processes to facilitate more active participation in local decision-making
- Achieve these objectives to enable Council to contribute to social cohesion and well-being in the eastern suburbs by fostering community development and collaboration.

Our Data at Large



TOP THREE THEMES ACROSS THE EASTERN SUBURBS

Classifications

Tasks	
Under Review:	52
Seeding:	19
Growing:	60
Established:	93

Under Review: Work or Project has yet to be considered
Seeding: Idea or intention has been identified
Growing: Work is underway
Established: Work or Project is Complete and is delivering value for the community

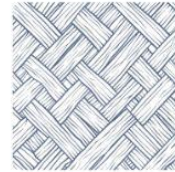
To stay up to date with the work so far, read our Recommendations Report from October here:
<https://login.app.bigtincan.com.au/story/1137282868>



RARANGA TE RAWHITI ACTION STATUS REPORT JANUARY 2026

About Us

Raranga Te Rāwhiti – Weaving the East aims to strengthen the threads that connect Council and communities across Ōtautahi's eastern suburbs. Emerging from the Wastewater Treatment Plant Fire Review, this work is part of a wider commitment to listen, learn, and co-create with residents in the Eastern Suburbs.



Raranga Te Rāwhiti – Weaving the East continues to strengthen the threads that connect Council and communities across Ōtautahi's eastern suburbs. Building on the earlier recommendations report, this work reflects Council's ongoing commitment to listen, learn, and co-create with residents in the Eastern Suburbs.

At the heart of Weaving the East are shared values that guide how Council works in partnership with communities:

- Kotahitanga (we are all in this together)
- Trust
- Respect
- Equity
- Managing expectations well

The up-report, the practical actions identified by the Social Wellbeing Network are now being used and classified to guide Council's actions. This recommendation has been used and categorised according to its

By grounding the classification of recommendations in these values, Council ensures that its actions are practical, achievable, and aligned with the aspirations and wellbeing of the communities of the East.

Community Snapshot Aranui



Aranui is characterised by deep intergenerational ties. Families have often lived in the community across generations, and a sense of "everyone knows everyone" was a consistent theme. The community shows particular strength in times of difficulty, with people naturally looking out for each other and supporting those in need, descending from a strong and distinct sense of belonging to Aranui with this pride being central to the community's character. The area is supported by a number of vital

"The heartbeat behind this community is that everyone knows everyone, or they've got generations that have grown up in this community. And because it's so small, it's tight-knit... Aranui is Aranui."

"There's a great sense of community, the Aranui community has been well established for a long time."

"Those environments and the things like Affirm [community event] and all that sort of stuff, you do see the real positive stuff in

Introduction

Raranga Te Rāwhiti – Weaving the East aims to strengthen the threads that connect Council and communities across Ōtautahi's eastern suburbs. Emerging from the Wastewater Treatment Plant Fire Review, this work is part of a wider commitment to listen, learn, and co-create with residents in the Eastern Suburbs.

As part of this work Christchurch City Council has partnered with the Social Equity & Wellbeing Network (SEWN) to carry out a range of community-based interviews with various organisations and individuals across the eastern suburbs. The interviews were focused around 15 community "zones", with each zone producing a unique report that captures that community's priorities, challenges, and aspirations as well as their relationship and connection with Council.

This recommendations report summarises the content and draws attention to the key themes highlighted as well as the recommendations provided by the independent researcher highlighting the practical actions the Council can take to support communities with what matters most to them.

Interviews commenced in mid 2025 and concluded in September with the community reports being released progressively as each zone is completed. This staged approach has allowed Council staff to begin exploring and responding to

Council recognise that relationship-building and community resilience are ongoing processes. In order to acknowledge the fluid nature of this we will be categorising progress on our actions into three stages: Seeding, Growing and Established.

At the heart of Weaving the East are shared values that shape how we aspire to work in collaboration with our communities:

- Kotahitanga (we are all in this together)
- Trust
- Respect
- Equity
- Managing Expectations Well

By grounding our work in these values, we ensure that the actions we take are not only practical and achievable, but also aligned with the aspirations and wellbeing of the communities of the East.



Coastal Ward

Bounded by the Waimakariri to the north and Te Ōkāroo-Ōpāwaho Ihutai to the south, the ward forms a long corridor which, hugged by the coastline, extends down to the southernmost tip of Te Karoro Karoro Southshore Spit, transitioning through rural to urban environments.

The communities who reside within the Coastal Ward enjoy diverse and easy access to the beach and an extensive range of sport and recreational opportunities. Bottle Lake Forest and Spencerville Park have horse, walking and cycling trails. There are walks through the sand dunes and along the Ōkāroo-Ōpāwaho Ihutai, a wetland of international significance all of which continues to be a key attraction for people choosing to live in the area.

This area of Christchurch was extensively damaged in the Canterbury Earthquakes in 2010/2011. A great deal of work has been undertaken underneath the ground to fix waterways and infrastructure, however the significant above groundwork has taken longer to repair and recover from.

A map of the Coastal Area highlighting the project "zones" - Spencerville/Brooklands, Parklands, New Brighton, South New Brighton and Southshore



Key
 Parklands South New Brighton
 New Brighton Southshore
 Spencerville/Brooklands



Raranga Te Rawhiti Weaving the East

Thank you!

Te Pātaka o Rākaihautū Banks Peninsula Community Board Report to Council – 3 June 2026



Presenters: Lyn Leslie, Chairperson and Nigel Millar, Deputy Chairperson

Waka Kotahi NZ Transport Agency Update

- State Highway maintenance activities
- The new maintenance contract and delivery approach
- Emergency response activities



Board Plan Priority: Strengthening Infrastructure to be more resilient

Community Facilities Update

- 25% (18) of CS&P Unit Community facilities are on Te Pātaka o Rākaihautū Banks Peninsula
- All except one are community managed
- Critical to support social connection in rural communities
- Used as Community Response Hubs in emergency situations
- Identified several priorities to continue to advocate for:
 - Improvements to the Akaroa Sports Pavilion (Parks asset) to cater for youth and multicultural needs
 - Earthquake repairs for Port Levy Hall



Akaroa Sports Pavilion

Board Plan Priority: Fit For Purpose Community Facilities



Governors Bay Community Centre with Pairman Library in left background.

Thank you!
Ngā mihi nui!

Waihoru Spreydon-Cashmere-Heathcote Community Board

Report to Council – 3 June 2026



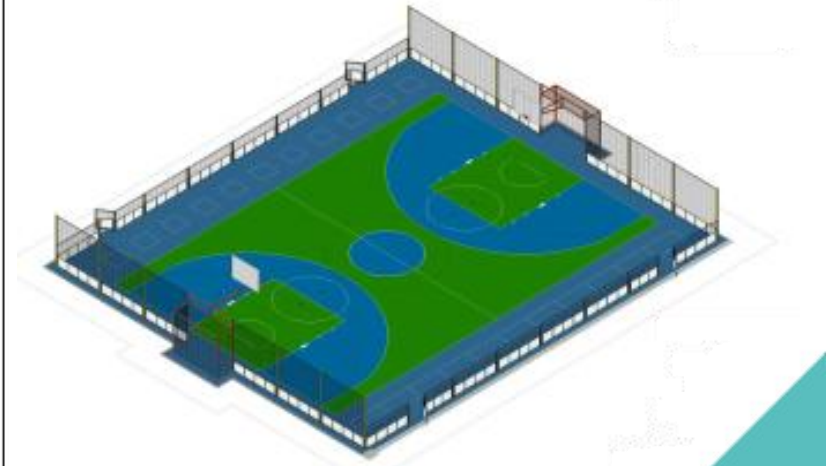
Presenters: Keir Leslie (Chair), Sophie Bond (Deputy Chair)

Grant of Easement Cracroft Reserve



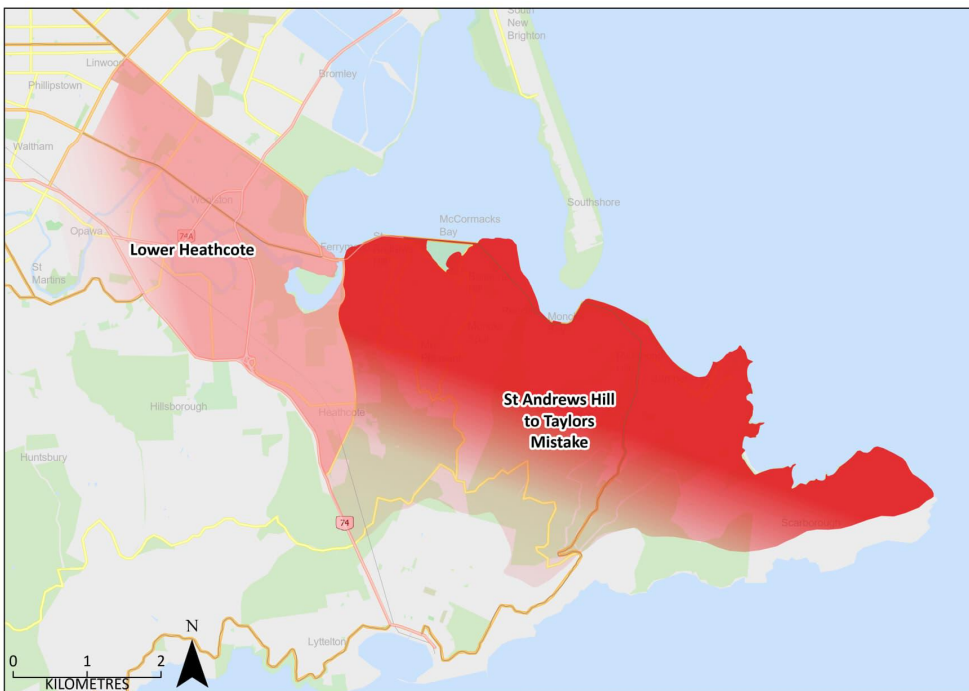
2

Waltham Park renewals



3

Community Resilience: Coastal hazards adaptation planning



Resilience

Readiness

Civil Defence
Emergency
Management
Update

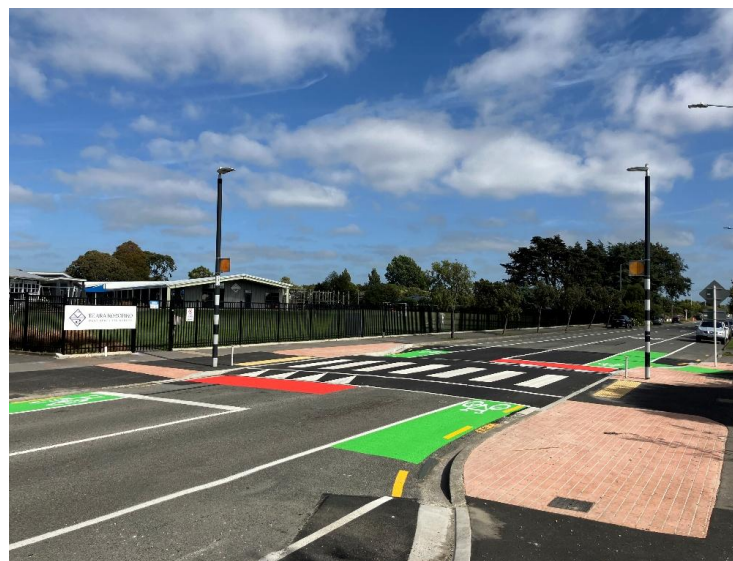


Completion of Christchurch Regeneration Acceleration Facility (CRAF) projects



West Spreydon School raised crossing

Safer streets



5

Safer Transport Choices



Selwyn Street pedestrian safety project



6

Waimāero Fendalton-Waimairi-Harewood Community Board

Presentation to Council – 3 June 2026



Presenters: Jason Middlemiss (Chair) and Nicola McCormick (Deputy Chair)

Community Garden Pride Awards



The Board recently held our Community Garden Pride Awards function at the Russley Golf Club.

46 certificates were presented, along with 5 trophies. Our 1st Place trophy went to a property on Memorial Avenue (above) and The Commodore Airport Hotel was the winner of our Best Commercial Garden trophy.

Community Funding Hui

Our Community Governance team recently hosted two Community Funding Hui for local community organisations.

Presentations were delivered by representatives from Christchurch City Council, Department of Internal Affairs, Perpetual Guardian, Sport Canterbury, NZCT, and Pub Charity.



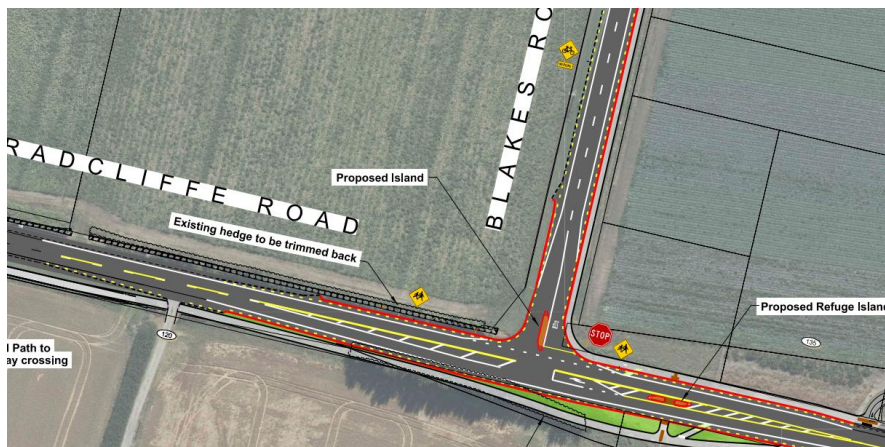
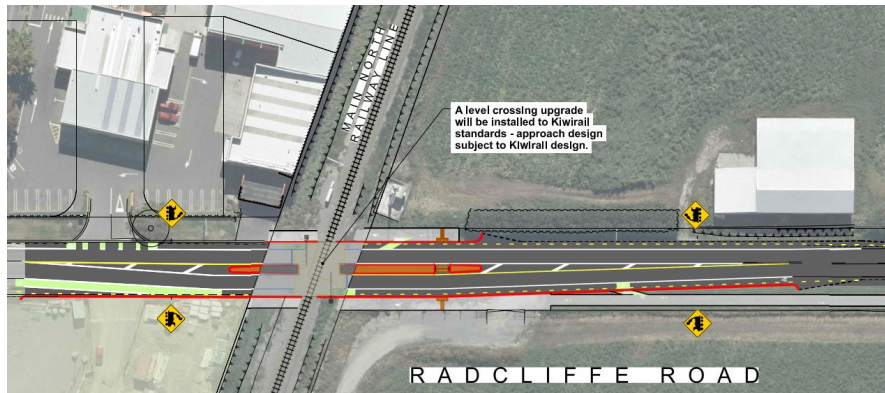
De-escalation Workshop for Community Groups



Our local Governance staff recently organised a ‘de-escalation’ workshop for local community groups which was delivered by Dr Chris Taua from Pumahara Consultants.

The feedback from participants was so positive that we will be hosting another session in July 2026 for other groups to attend.

Part A – Radcliffe Road Corridor Improvement



Our Board supported the staff recommendations regarding a number of safety improvements to be implemented around Radcliffe Road and Blakes Road in Belfast.

In addition, the Board requested advice from staff on lowering the speed limit on Radcliffe Road between Blakes Road and the Northwood Supa Centa.

Thank you!



Pitch to Christchurch City Council: Supporting Dark Sky Certification for Banks Peninsula

I request council support to progress certification for Banks Peninsula as a dark sky reserve. A lighting management plan is needed to meet requirements for Dark Sky International. Such a plan could be expedited now because of the community processes already undertaken and the political and legislative environment at the current stage. This is a practical, community-backed opportunity to protect the natural environment, reduce light pollution, support biodiversity, strengthen sustainable tourism, and enhance the Peninsula's identity as a special place within Christchurch district.

Community support and survey findings

Community support for dark sky certification is strong. Reporting on the proposal found that 85% of nearly 300 survey respondents supported progressing a dark sky reserve for parts of Banks Peninsula. Public commentary on the initiative has consistently highlighted the value of darker skies for conservation, human health, energy efficiency, and tourism. This level of support provides a solid mandate to continue the work and demonstrates that the proposal is not being advanced in isolation, but with clear local backing.

Results of community meetings

Initial public meetings in Akaroa and Birdlings Flat confirmed encouraging support for the initiative. Reporting on those meetings recorded attendance of more than 20 people in Akaroa and more than 40 in Birdlings Flat, with overall feedback described as positive. Community members recognised the environmental and amenity benefits of reducing light pollution. The main concern raised was the possibility of increased tourism pressure in some areas. That concern is valid and should be addressed through careful planning, staged implementation, and alignment with wider destination management work, rather than treated as a reason to halt the project.

Local organisations and stakeholders

This initiative has been supported and advanced by a growing network of local stakeholders. Akaroa Stargazing has played a leading role in community outreach and technical advocacy for certification. The Te Pātaka o Rākaihautū Banks Peninsula Community Board was approached and could not comment as it was outside their remit. The work also aligns with broader community discussions about balanced

tourism, sustainable destination management, and preserving the distinctive environmental qualities of Banks Peninsula.

Why Christchurch City Council should support this

Council support would help convert strong public interest into a credible, deliverable certification pathway. Dark sky certification offers multiple public benefits: protection of nocturnal ecosystems, better management of light spill and glare, stronger public awareness of responsible lighting, and a distinctive tourism proposition that complements Banks Peninsula's natural and cultural assets. It also aligns with a balanced approach to tourism by encouraging lower-impact, experience-based visitation rather than high-volume growth alone. Importantly, this is a project that can reinforce local identity while contributing to district-wide goals around sustainability, place-making, and environmental stewardship.

Suggested actions for Christchurch City Council

- Commit to progressing a lighting plan change for Banks Peninsula so that the planning framework supports dark sky certification outcomes.
- Use the recommendations of Dark Sky lighting consultants as the technical basis for that plan change, so that any new provisions are practical, evidence-based, and capable of meeting certification requirements without the need for spend on further consultants.
- Prioritise the lighting rules, standards, and implementation measures needed on Banks Peninsula to reduce light spill, glare, and inappropriate outdoor lighting in line with the certification pathway.
- Write to the minister for RMA reform to request an exemption from the "All-Stop" notice on plan changes, to allow a lighting plan change for Banks Peninsula.
- Set out a clear timetable for progressing the plan change so that certification work can move forward with confidence and certainty.

Conclusion

Banks Peninsula is exceptionally well placed to pursue dark sky certification, and the case for Council support is compelling. The community response has been positive, the environmental and tourism benefits are clear, and the initiative fits with a long-term vision of protecting what makes this part of our district unique. I would welcome the opportunity to work with Christchurch City Council, the Community Board, local organisations, and residents to help move this project into its next phase.

A



B

Mayor's monthly report

May 2026

Item 15

Attachment A

Kia ora

May has been a busy and productive month for the city.

At a national level, the Government has announced its *Head Start for Simplifying Local Government* proposal. This offers a streamlined, voluntary pathway for councils prepared to reorganise ahead of wider reform in 2028.

Initial outline proposals for new unitary authorities are due in August, with detailed policy decisions expected early next year. It will be a full and focused period ahead for Council and staff as we work through what this could mean for Christchurch.

Closer to home, we have progressed key decisions that shape our city's future. This month, we provided direction on the Annual Plan, asking staff to develop a \$1.6 billion programme with an overall average rates increase of 7.83% for consideration in June.

We also marked an exciting milestone with the first concert at One New Zealand Stadium at Te Kaha. This was an outstanding event that drew visitors from across the country and reinforced Christchurch's growing reputation as the sports and events capital of New Zealand.

Looking ahead, there is real cause for optimism. Christchurch has been selected as one of 300 cities worldwide to take part in the Bloomberg Philanthropies Youth Climate Action Fund, empowering our young people to design and deliver practical climate solutions for their communities. This reflects both the strength of our young people and the city's commitment to a more sustainable, resilient future.

As the days grow shorter and the nights cooler, I encourage you to stay connected. As I have been out and about this month, I've been reminded time and time again it is these connections that continue to make Christchurch and Banks Peninsula such a strong and vibrant place to live.

Ngā mihi,



Phil Mauger
MAYOR



Head Start

Head Start proposal

We've had a busy time recently with the Government's direction for councils to get together to come up with options for amalgamation within their regions.

It's a big piece of work, so we're cracking on with looking at what the reform process means for us. We've also started having conversations with our partners.

As you'd expect, there are a few concerns out there about the pace of change and what it all means for local communities. That's completely fair. Protecting local voice and identity is important to all of us, and it's something we need to get right.

I've always believed there's value in looking at how local government can work better. What this "Head Start" approach gives us is the chance to shape something ourselves, rather than having it imposed on us later. If we do this well, it could mean better planning for infrastructure, a stronger regional voice, and making better use of ratepayers' money. This has to be a good thing for everyone.

At the end of the day, we want to engage across the region and put a proposal forward and I believe that working together with our regional and Te Tiriti partners will get us the best outcome.

The key now is working together. That means sitting down with neighbouring councils, mana whenua, and all stakeholders to have the necessary conversations. A strong model will support local identity and voice while building the regional capability our communities need.

No decisions have been made yet, but we do need to keep moving and land on a clear direction before August.

In the meantime, please be assured we're using this time wisely, keeping an open mind, and focusing on what's going to deliver the best outcome for our communities in the long run.

Bloomberg Youth Climate Action Fund

Christchurch has been selected as one of 300 cities worldwide to take part in the Bloomberg Philanthropies Youth Climate Action Fund. This is a global initiative empowering young people to design and deliver practical climate solutions in their own communities. I was keen to support this initiative as soon as I heard about it, and I recently joined a global webinar alongside mayors also involved in the Fund.

Having spent time talking with young people about climate action, I know just how passionate they are about making a difference for their city. Our young people bring energy, creativity, and a strong sense of responsibility for the future, and I'm really looking forward to seeing the ideas they bring forward and the practical solutions they come up with for Christchurch.

Through the programme, Christchurch City Council will receive approximately \$85,000 to support youth-led climate projects, with micro-grants available to those aged 15 to 24. Climate action is not something councils can do alone. By backing youth-led initiatives, we are growing the next generation of leaders who are invested in the future of this city, while delivering real benefits for our communities today.

Annual Plan 2026/27

Christchurch City Council staff now have all the guidance they need to begin finalising the city's Annual Plan 2026/27.

The Annual Plan is, effectively, the city's budget for the coming financial year, outlining the services the Council will deliver and how it will pay for them. The Council took its Draft Annual Plan out for public feedback in February.

At a workshop this month, councillors and I weighed up all the public feedback and gave direction on the sort of budget we want staff to build – broadly, a \$1.6 billion budget with an overall average rates increase of 7.83%. We will make a final decision on the Annual Plan in June.

One New Zealand Stadium at Te Kaha

Once in a Lifetime at One New Zealand Stadium

I attended the “Once in a Lifetime” event, the first concert at the One New Zealand Stadium at Te Kaha.

The atmosphere was fantastic, the music was great, and I am looking forward to the opportunities events like this will create for Christchurch and the wider region.

Crusaders vs Chiefs

I attended the Super Rugby match between the Crusaders and the Chiefs; the Crusaders held their composure in a gripping final quarter to overcome the Chiefs 36–32.

Major sporting events continue to play an important role in bringing communities together, supporting local businesses, and showcasing Christchurch as the vibrant events and sporting capital of New Zealand.

St Paul’s Trinity Pacific Church memorial plaque and tree planting

I attended the unveiling and blessing of the memorial plaque commemorating the former St Paul’s Trinity Pacific Church site. Built in 1877, St Paul’s was both a place of worship and a significant heritage landmark in Christchurch for well over a century.

Importantly, the story of St Paul’s is not simply about a building, but about the generations of people and communities connected to it.

That legacy was especially evident following the earthquakes, when the site became home to the 185 Empty White Chairs memorial, created by Peter Majendie, honouring the lives lost in the February 2011 earthquake. The memorial became a deeply moving place of reflection and remembrance for Christchurch and visitors alike.

The plaque unveiling was an opportunity to acknowledge both loss and legacy, while also celebrating and recognising the enduring contribution of faith communities- and particularly Pacific communities- to the social and spiritual fabric of Christchurch.



Community Events, Meetings, and Highlights

TRENZ Tourism Growth Forum

I participated in the TRENZ Mayoral Tourism Forum, which was attended by the Minister for Tourism & Hospitality, Hon. Louise Upston, as well as the mayors from Rotorua, Auckland and Queenstown.

The discussion focussed on strengthening the relationship between central and local government, and across regions, to drive sustainable visitor growth.

New Zealand's Future Food and Fibre Summit

I attended E Tipu: The New Zealand Future Food and Fibre Summit, hosted at Te Pae. The summit brought together leaders and innovators from across the food and fibre sector to explore the ideas and technologies shaping the future of one of New Zealand's most important industries.

Hosting the summit at Te Pae reflects the city's growing role as a centre for innovation, research, agritech, and food production. It was valuable to acknowledge the sector's significant contribution to the national economy and the opportunities that exist for sustainability, productivity, and regional growth.

Air New Zealand: Regional Stakeholder Workshop

I attended an Air New Zealand Regional Stakeholder Workshop focused on the airline's strategy reset and the future of regional aviation. The discussion explored the challenges and opportunities facing the aviation sector, including connectivity, affordability, resilience, and the importance of maintaining strong regional links across New Zealand.

Reliable air connections remain critical for the city's economic growth, tourism sector, business activity, and social connectivity, and the workshop provided a constructive opportunity to share regional perspectives and discuss future priorities collaboratively.

Public Libraries New Zealand: National Forum

I welcomed delegates to Christchurch for the Public Libraries New Zealand National Forum. Public libraries continue to play an essential role in supporting literacy, lifelong learning, community connection, and access to information and technology. It was a pleasure to host library leaders and professionals from across the country as they shared ideas and explored the future of library services in our communities.

Aviva annual street collection

I participated in the annual street collection for Aviva, supporting the organisation's important work assisting individuals and families affected by family violence and abuse.

Aviva provides critical services across Christchurch, and the community's ongoing support helps ensure vulnerable people can access safety, advocacy, and practical assistance when needed most. Thank you to everyone who stopped for a chat and donated.

Ecogas Christchurch construction site

I visited the Ecogas Christchurch construction site to view progress on this significant investment in sustainable infrastructure. The facility represents an important step toward reducing organic waste sent to landfill while supporting innovation in renewable energy and resource recovery.

64th Independence Celebrations 2026 for Samoa

I attended the 64th Independence Celebrations for Samoa at St Paul's Trinity Pacific Church.

The occasion highlighted the strong and enduring contribution Pacific peoples make to Christchurch through leadership, service, business, education, faith communities, sport, and culture.

Community Events, Meetings, and Highlights

Burnside Bowling Club season closing day

I attended the Burnside Bowling Club's official season closing day in my role as Club Patron. This event is also a great opportunity to acknowledge the contribution of life members, welcome new members, and recognise the important role the club continues to play in the wider community.

Clubs like Burnside are a cornerstone of our city, bringing people together and strengthening community connections across Christchurch and Banks Peninsula. My thanks and congratulations to the many volunteers who give their time, week after week and year after year, to make these spaces thrive. Your service is what keeps our communities strong and connected.

Nurse Maude Hospice

I attended the opening of the new Nurse Maude Hospice facility. The new facility reflects a significant investment in compassionate care and support for patients and families during some of life's most challenging moments. It was also an opportunity to acknowledge the dedication of staff, volunteers, and supporters who make this vital service possible.

Blessing of Youth Hub Events Centre

I attended the blessing of the Youth Hub Events Centre, an important milestone for a project focused on supporting and empowering young people in Christchurch. The centre will provide a welcoming space for connection, creativity, learning, and community activity, helping foster a sense of belonging and opportunity for young people across our city.



Civic and International Relations

Citizenship ceremony

Another citizenship ceremony this month and another opportunity to celebrate people from around the world who have chosen to make Christchurch their home. As ever, it was a significant milestone for the new citizens and their families, and a powerful reminder that Christchurch is strengthened by the diversity, skills, cultures, and perspectives people bring to our city and to New Zealand.

Ambassador of Timor-Leste

I welcomed Her Excellency Mrs Idelita Rodrigues, Ambassador of Timor-Leste, during her first official visit to Christchurch. Discussions focused on opportunities for cooperation between Christchurch and municipalities in Timor-Leste, particularly regarding capacity building in agriculture, education, and local government.

It was a valuable opportunity to strengthen relationships and explore how Christchurch can contribute to supporting community and institutional development internationally.

Ambassador of The Netherlands

I also attended a courtesy call with His Excellency Mr Ard van der Vorst, Ambassador of The Netherlands. The meeting provided an opportunity to acknowledge the longstanding relationship between New Zealand and The Netherlands and to discuss areas of shared interest, including international cooperation, innovation, and community connections.



Regional Partnerships

Canterbury Mayoral Forum

The Canterbury Mayoral Forum, which typically meets quarterly, comprises the mayors of the 10 territorial authorities in Canterbury and the Chair of the regional council (Environment Canterbury).

The forum met on 29 May 2026, and the agenda papers and confirmed meeting minutes can be found here:

- <https://canterburymayors.org.nz/resources/>

Looking Ahead

Events and meetings calendar

03 June to 12 June	Visiting Sister Cities in China
13 June to 16 June	Attending the World Cities Summit in Singapore
22 June	Attending the Ngā Hau E Whā National Marae Board of Trustees Meeting
29 June	CIR Citizenship Ceremony