

**Waipapa**  
**Papanui-Innes-Central Community Board**  
**MINUTES ATTACHMENTS**

---

**Date:** Monday 13 April 2026  
**Time:** 4 pm  
**Venue:** Board Room, Papanui Service Centre,  
Corner Langdons Road and Restell Street, Papanui

---

<b>TABLE OF CONTENTS NGĀ IHIRANGI</b>	<b>PAGE</b>
<b>4.2. Public Forum - Libby Greaves</b>	
A. Presentation - Libby Greaves.....	3
<b>7. Briefings</b>	
A. Presentation - Environment Canterbury - Public Transport Network Review .....	8

---













ENVIRONMENT CANTERBURY  
Kaunihera Taiao ki Waitaha

*Greater Ōtautahi Network Review  
&  
Ten-year Plan for Service  
Improvements 2027-37*

 **Environment  
Canterbury**  
Regional Council  
Kaunihera Taiao ki Waitaha

## Strategic Context

### *Regional Public Transport Plan (2025-35)*

The Regional Public Transport Plan 2025-35:

- Sets the vision, priorities, policies and actions.
- Is focused on growth - creating a high patronage network that prioritises frequent services and routes in high-density areas, with walkable catchments, and with direct routes.



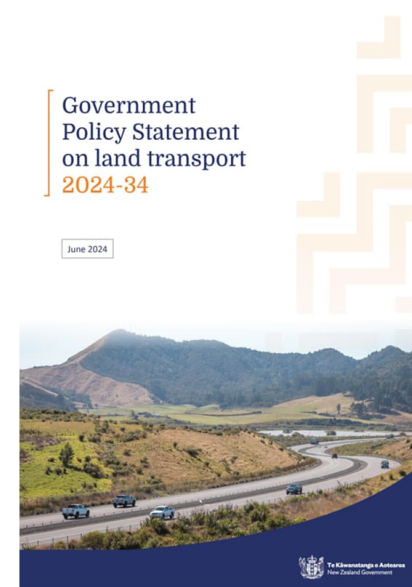
**Our vision:**

Public transport is the mode of choice for more people and provides a safe, frequent, accessible, low emission transport option.

## Strategic Context

### *National direction*

- Ministerial expectations that PTAs will:
  - actively work towards increasing public transport private share. (e.g. ensuring passenger fares and third-party revenue covers a greater portion of public transport expenditure).
  - deliver National Ticketing Solution (Motu Move)
- Constrained funding environment
- To secure NLTP co-investment (51%) need to evidence value for money investments in improvements.
- This supports the focus on driving patronage growth though improvements.



## Christchurch, Waimakariri and Selwyn *Growing fast*

- Over the past 15 years, Greater Christchurch has grown rapidly to a population of around half a million.
- By 2050 up to 700,000 people could be living in Greater Christchurch – 40% more than there are today, with potentially an additional 100,000 cars on the road
- ~50,000 people a decade
- Placing increasing pressure on the land transport network.

we're for canterbury

STAR NEWS DISTRICTS LIFESTYLE SPORT DIGITAL EDITIONS FEATURES VID

Thursday, 15 January 2026

### Christchurch congestion worse than Auckland - and it's set to compound

By Dylan Smits

Canterbury > Christchurch



Waltham Rd traffic going on to Moorhouse Ave. The avenue sees 52,848 vehicle on average a day. Photo: Geoff Sloan

**What streets have the worst congestion in Christchurch and what transport projects could help move the more than 100,000 extra vehicles projected to be on roads by 2050? Dylan Smits reports**

Greater Christchurch's population is projected to increase by about 85,000 by 2050, adding 30-40% more vehicles to the city's roads.

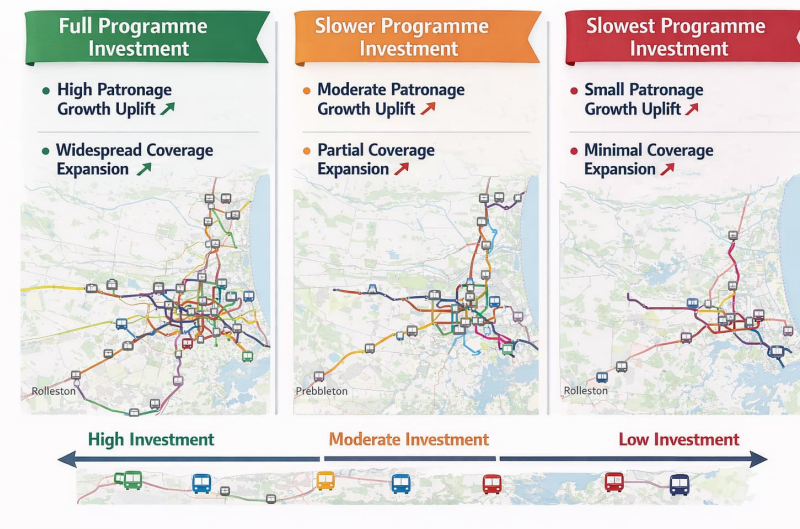
The population, including Selwyn and Waimakariri, could rise from about 560,000 to about 640,000 in 2050 – or up to 700,000 in higher projections.

# Community engagement

## *Public Transport Network Review & Ten-year Plan for Service Improvements*

### Key phases

- Mar-Apr 26: Outreach to key stakeholders, key stakeholder workshops
- May-Jun 26: (i) Public consultation: Network Review
- Mar 27 (TBC): (ii) Draft LTP 2027-37
- 3 options for a Ten-year Plan for Service Improvements
  - Key difference will be levels of co-investment and speed of programme implementation - particularly for improved coverage



# Customer meta-analysis

## *What communities are asking for*

### Key themes

Frequency, capacity and reliability	All current routes received requests to add trips or to make the service more frequent, aligns with comments about overcrowding.
Directness and express services	Reduce travel times, make routes more direct and add express links.
Service performance	Fix reliability/delays, bunching & better connections a key theme - cross-town links, bus-ferry alignment
Coverage gaps	New or extended routes for rapidly growing suburbs and rural townships.

## Waipapa Papanui-Innes-Central *What is the local community telling us?*

*I think the bus system in Christchurch is great though Redwood isn't well serviced by public transport (Redwood)*

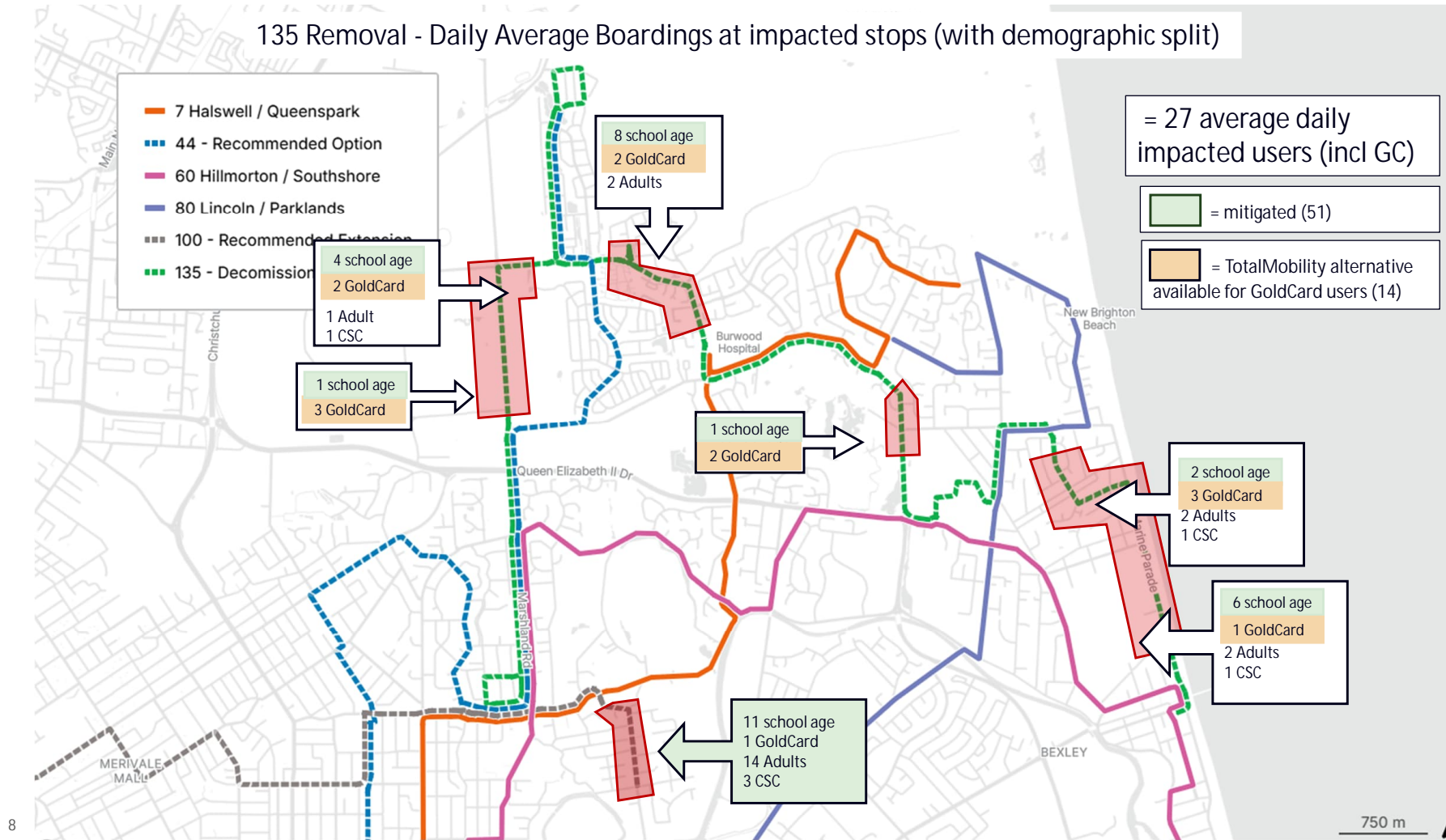
*7.40am bus running late with Cranford street build up all the way thru to Bealey Ave it is getting in too late for people who start at 8:30 ... this bus route either needs to start earlier or we all might have to use the 7:10 (which is full to the brim) normally I luv this service but it is going down hill (St Albans)*

- Requests for more reliable and frequent services.
- Better links to nearby employment areas.
- People have commented about coverage gaps in Papanui, mainly Northlink shopping centre and services on Langdons Road. Northlands is a key destination in this area.
- People say that congestion through areas like Cranford Street, Main North Road, and Papanui Road can impact the reliability of the bus schedule and cause missed connections.
- Requests for earlier/later services

*Buses do not serve shift workers, nor support those working later than ~8pm. (ChCh central)*

*I currently work a temporary job in what I call the "public transport deadzone" of South Hornby, I take the first bus of the day to Wigram and then bike from there. For many industrial workers, public transport is not a viable option, as buses don't go near these worksites or align with shift start times (Edgeware).*

*Can we have a bus go down Langdons Rd to service Northlink Shopping Centre?*



## Discussion

*How can we support your community conversations?*

- Newspaper advertisements and flyer inserts, digital campaign, bus backs, radio
- Survey: 13 May to 24 June
- Schedule of engagement events
- Supporting materials:
  - Flyers and posters
  - Social media posts

 [ecan.govt.nz/metroreview](https://ecan.govt.nz/metroreview)

Thank you!

Any pātai?