

Waipuna
Halswell-Hornby-Riccarton Community Board
MINUTES ATTACHMENTS

Date: Tuesday 28 April 2026
Time: 4.30 pm
Venue: Horoeka Room, Rārākau: Riccarton Centre,
199 Clarence Street, Riccarton

| TABLE OF CONTENTS NGĀ IHIRANGI | PAGE |
|--|-------------|
| 5.1. Deputations by Appointment - Opouira Knights Stream Park - Tree Planting Plan | |
| A. Presentation (Ōtumatua sculpture image) - Opouira Knights Stream Park - Tree Planting Plan | 3 |
| 7. Waipuna Halswell-Hornby-Riccarton Community Board Area Tree Planting Plans (Various Parks) | |
| A. Presentation - Waipuna Halswell-Hornby-Riccarton Community Board Area Tree Planting Plans..... | 4 |



Waipuna H-H-R Tree Planting Plans

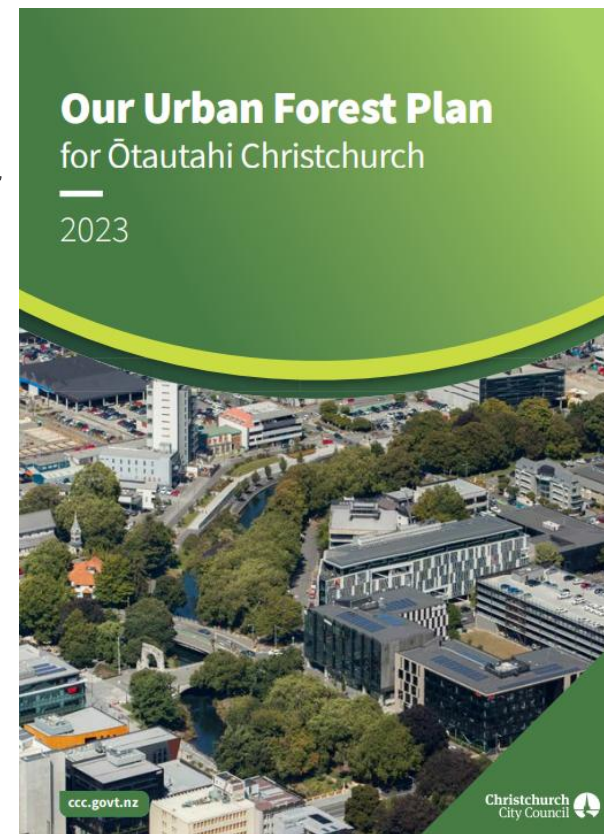
Waipuna Halswell-Hornby- Riccarton Community Board

Summary of Engagement and Changes to Plans

Tuesday 28th April 2026, 4.30pm

Urban Forest Plan

- Increase canopy cover across our city
- Focus on getting the overall canopy cover within our Parks spaces to 40%
- Providing for a network of native forest patches across the city
- Increasing the visibility of indigenous species
- Planting trees in sites that are able reach maturity



Why plant more trees?



Shading helps to reduce temperatures in parks. Climate change modelling shows Canterbury will have 20-60 more hot days each year by 2090 (25°C or above).



Help block wind. Climate change modelling shows wind is likely to increase in speed, winter and spring are likely to be windier.



Take up water from the ground, aiding in storm water management.



Filter out pollutants, and turn CO² into O²



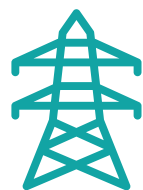
Provide a canopy corridor for native birds and insects to travel across the city.

Design considerations

Right location, right type, right function



Existing use of
the spaces



Overground &
underground
services



Future plans for
the park or
reserve



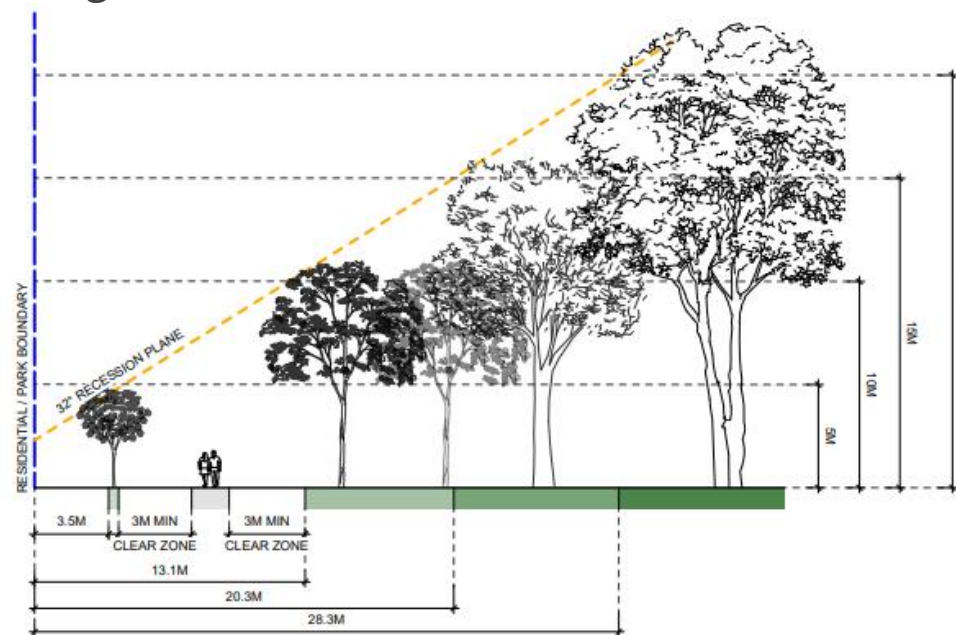
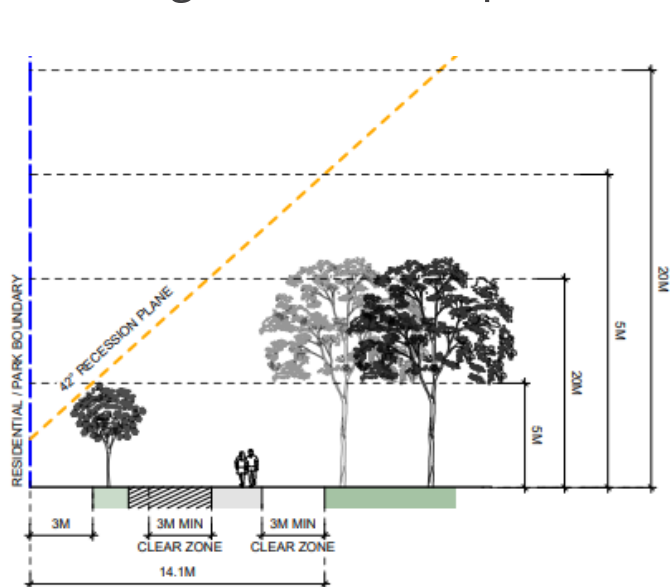
Location of
waterways in
the park or
reserve



Distribution of
nearby
indigenous
forests

Design considerations

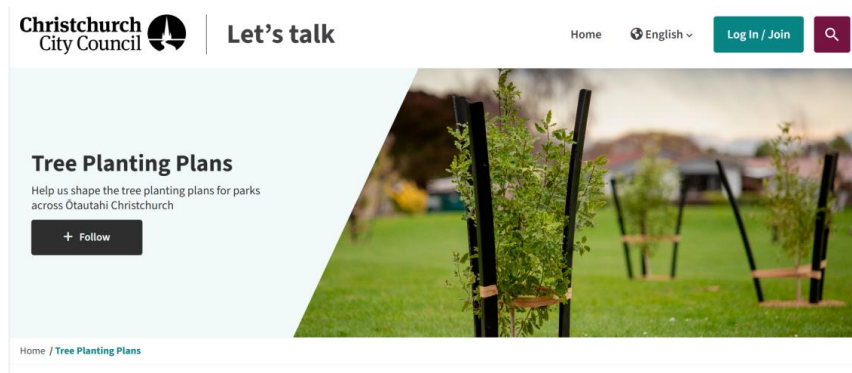
- Adherence to recession planes
- Creating off-sets from paths to avoid damage



Tree size when planted



Consultation



- Korero Mai
- Facebook posts
- Emails to stake holders
- Early engagement with sport clubs
- Hello Hornby
- Letter Drops
- Resident onsite meetings
- Engage over phone and emails
- Onsite Signage
- Letter Drops
- Resident onsite meetings
- Engage over phone and emails

Engagement Summary

- Consultation started on 6 March and ran until 22 March 2026.
- Project details including links to the tree planting plan [Kōrero mai | Let's Talk page](#) were advertised via:
 - An email sent to 41 key stakeholders, including residents' associations and community organisations.
 - Leaflets delivered to properties adjacent to the parks.
 - Signs installed at park entrances.
- The tree planting plan [Kōrero mai | Let's Talk](#) page had 1217 views throughout the consultation period.

Please Note Wycola Tree Planting Plan was consulted separately

Plans with no submissions requesting changes

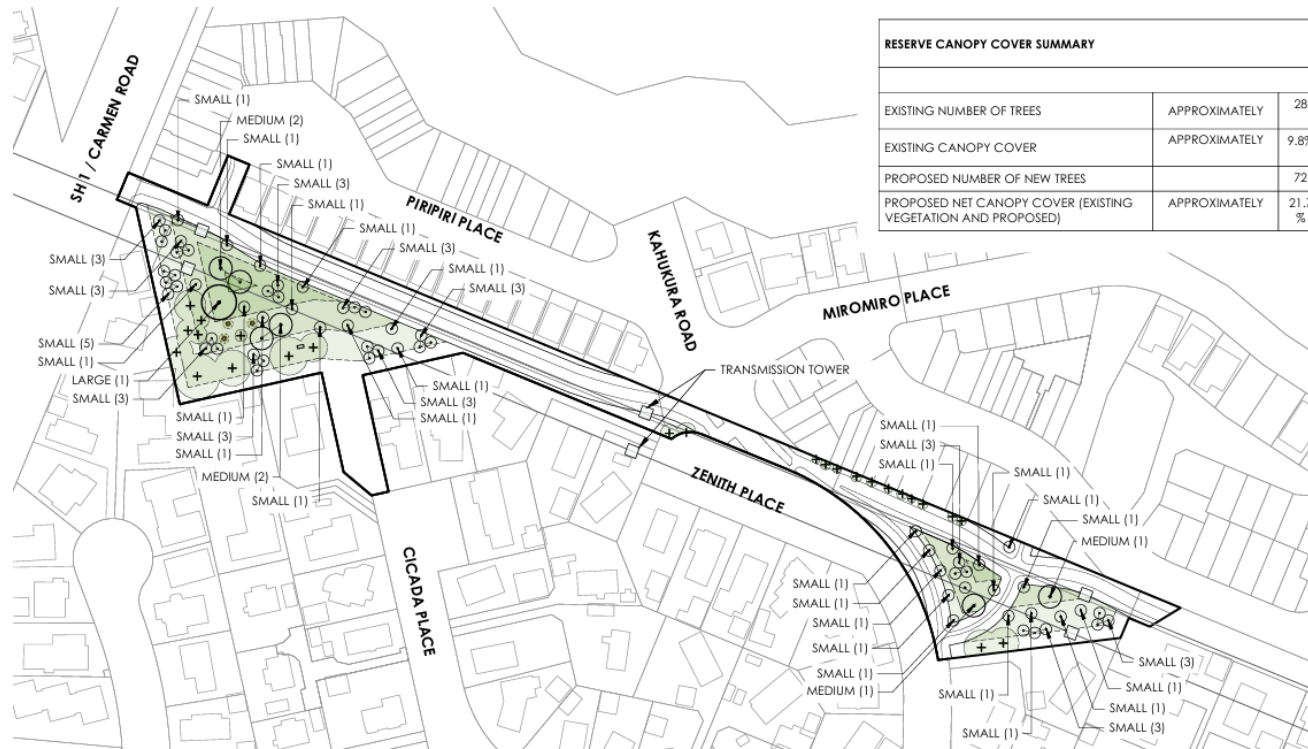
- Awatea Basin / Kahurangi Drainage Reserve
- Cicada Reserve
- Colman Reserve
- Coprosma Drainage Reserve / Dianthus Drainage Reserve
- Corbett Reserve
- Dow Park
- Dunbars Reserve and Dunbars Landscape Reserve
- Foremans Reserve
- Gloaming Reserve
- Helmore Park
- Kumara Reserve
- Parera Park
- Quaifes Road Springlands
- Somerville Reserve
- John Olliver Reserve

Awatea Drainage Basin / Kahurangi Drainage Reserve



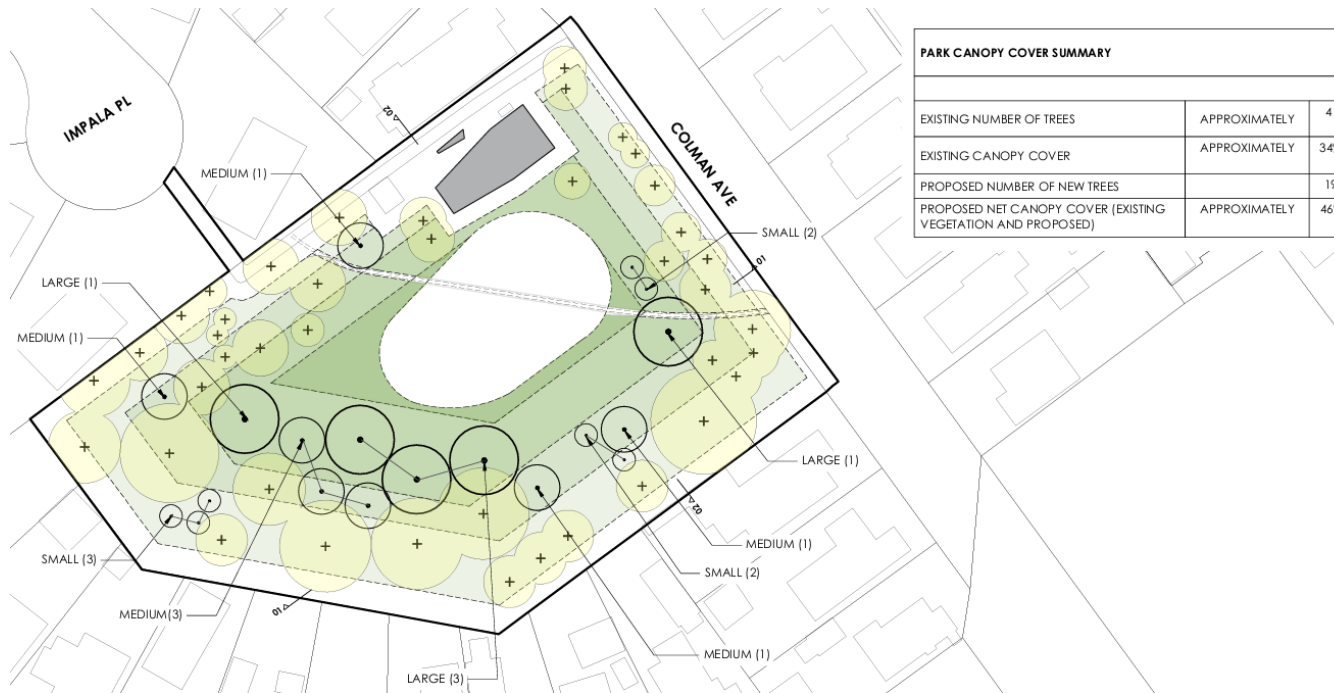
- 70 new trees
- Increase in canopy cover from 5% to 37% at maturity.

Cicada Reserve



- **72 new trees.**
- Increase in canopy cover from 10% to 22% at maturity

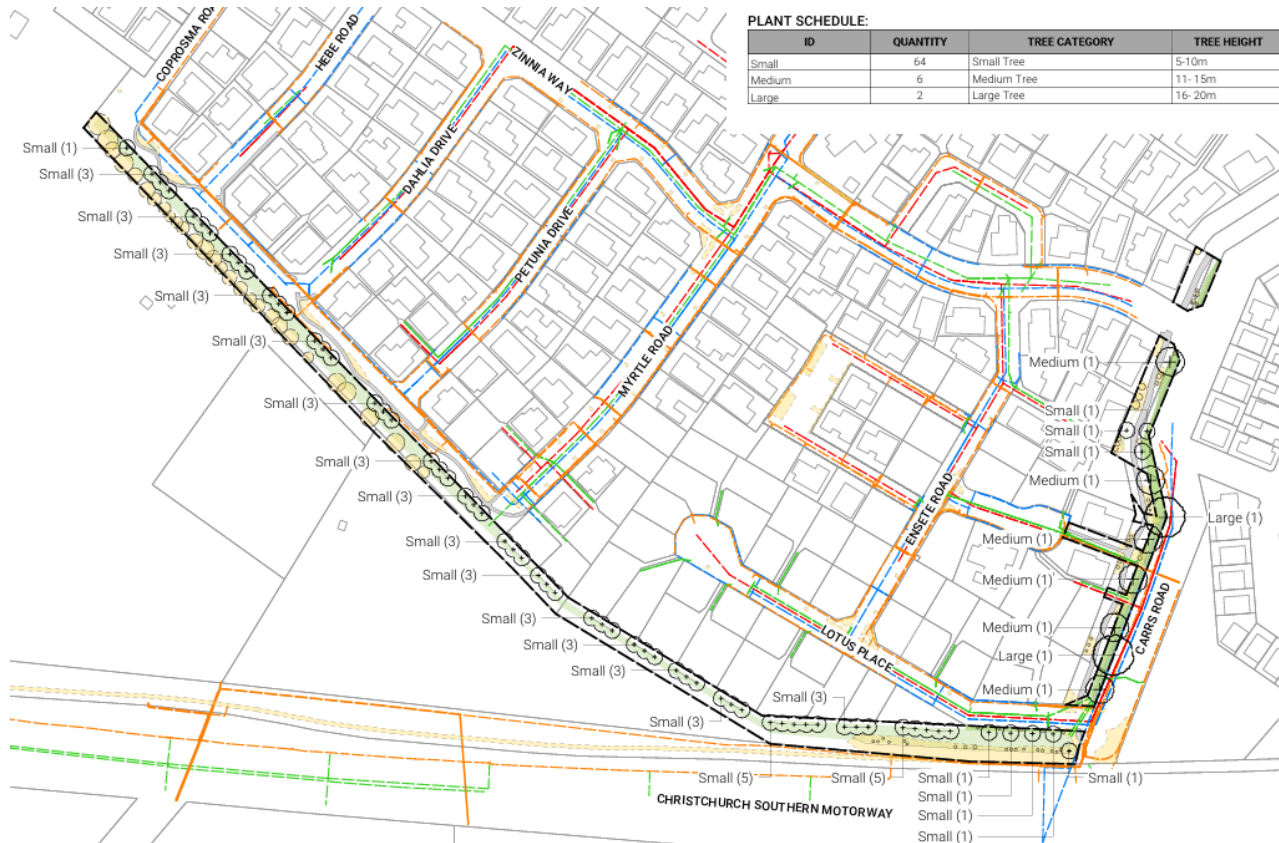
Colman Reserve



| PARK CANOPY COVER SUMMARY | | |
|--|---------------|-----|
| EXISTING NUMBER OF TREES | APPROXIMATELY | 41 |
| EXISTING CANOPY COVER | APPROXIMATELY | 34% |
| PROPOSED NUMBER OF NEW TREES | | 19 |
| PROPOSED NET CANOPY COVER (EXISTING VEGETATION AND PROPOSED) | APPROXIMATELY | 46% |

- **19 new tree**
- Increase in canopy cover from 34% to 46% at maturity

Coprosma Drainage Reserve / Dianthus Drainage Reserve



- 72 new trees
- Increase in canopy cover from 12% to 44% at maturity

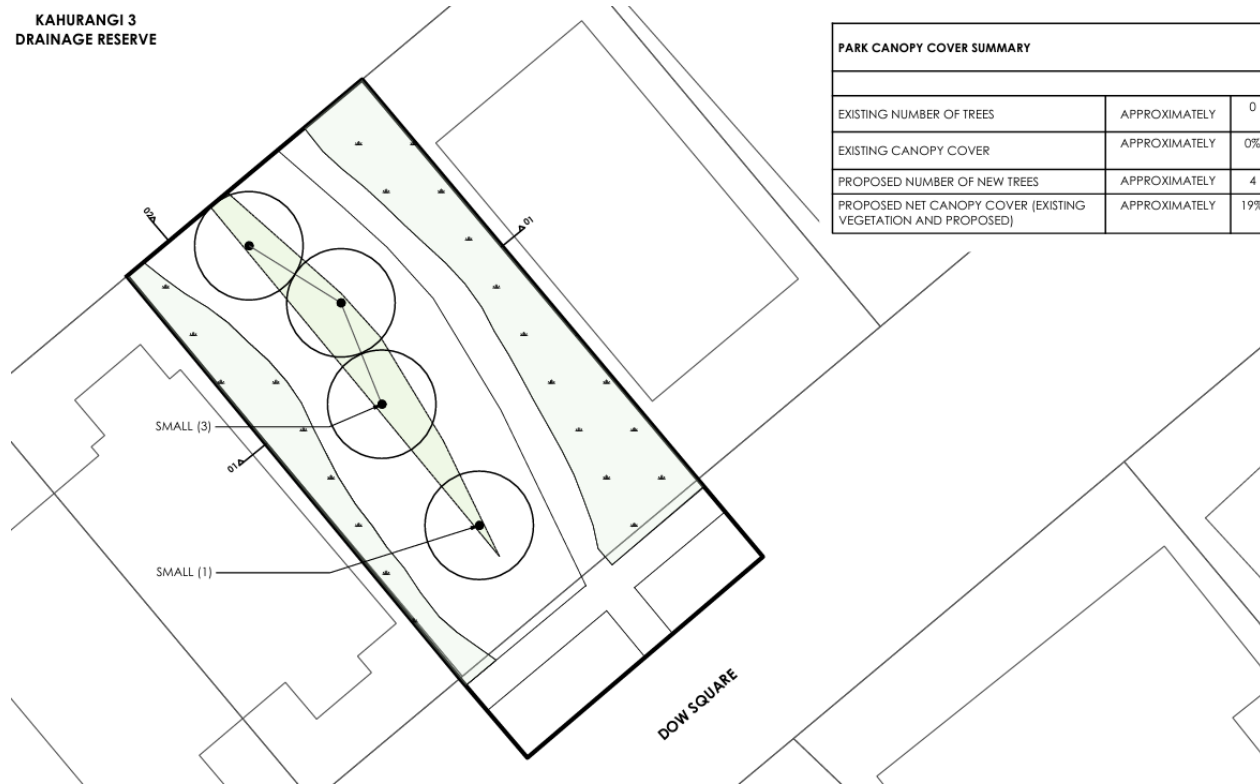
Corbett Reserve



- 5 new trees
- Increase in canopy cover from 0% to 47%

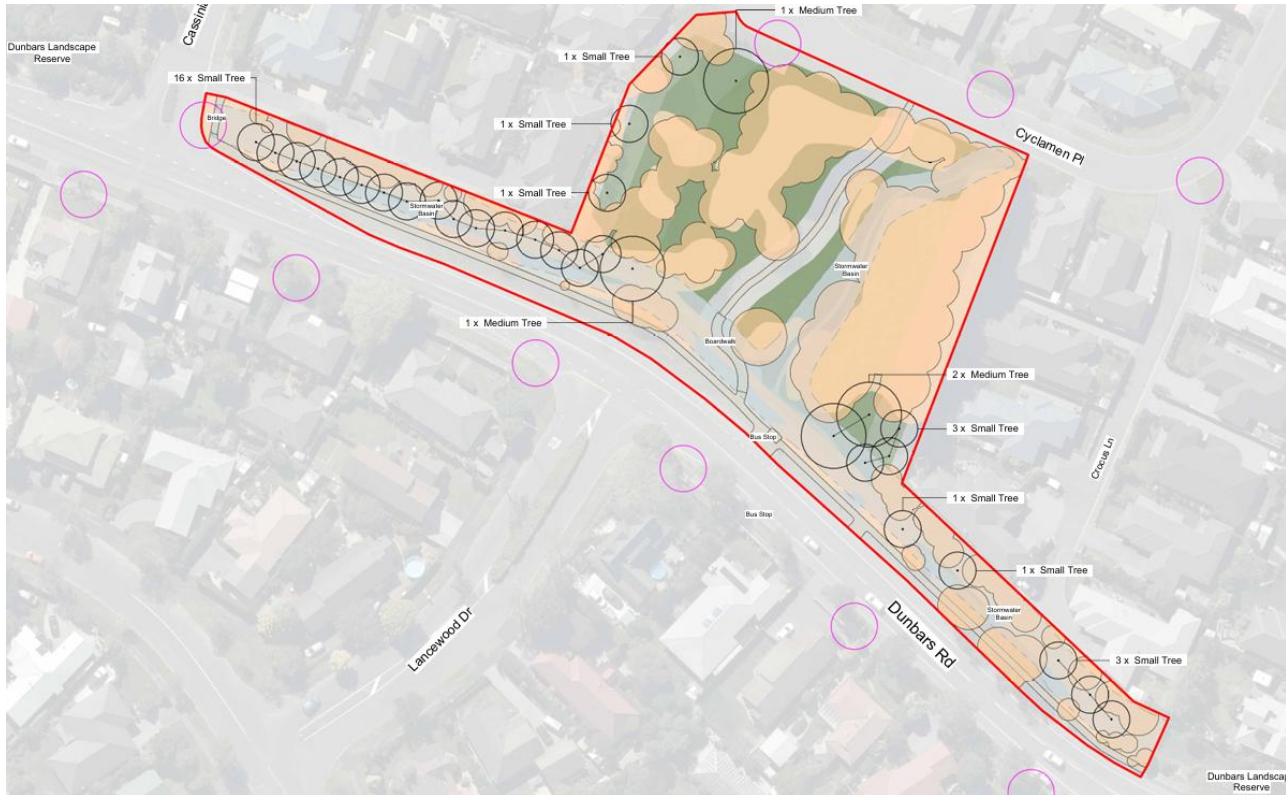
Dow Park

KAHURANGI 3
DRAINAGE RESERVE



- 4 new trees
- Increase in canopy cover from 0% to 19%

Dunbars Reserve



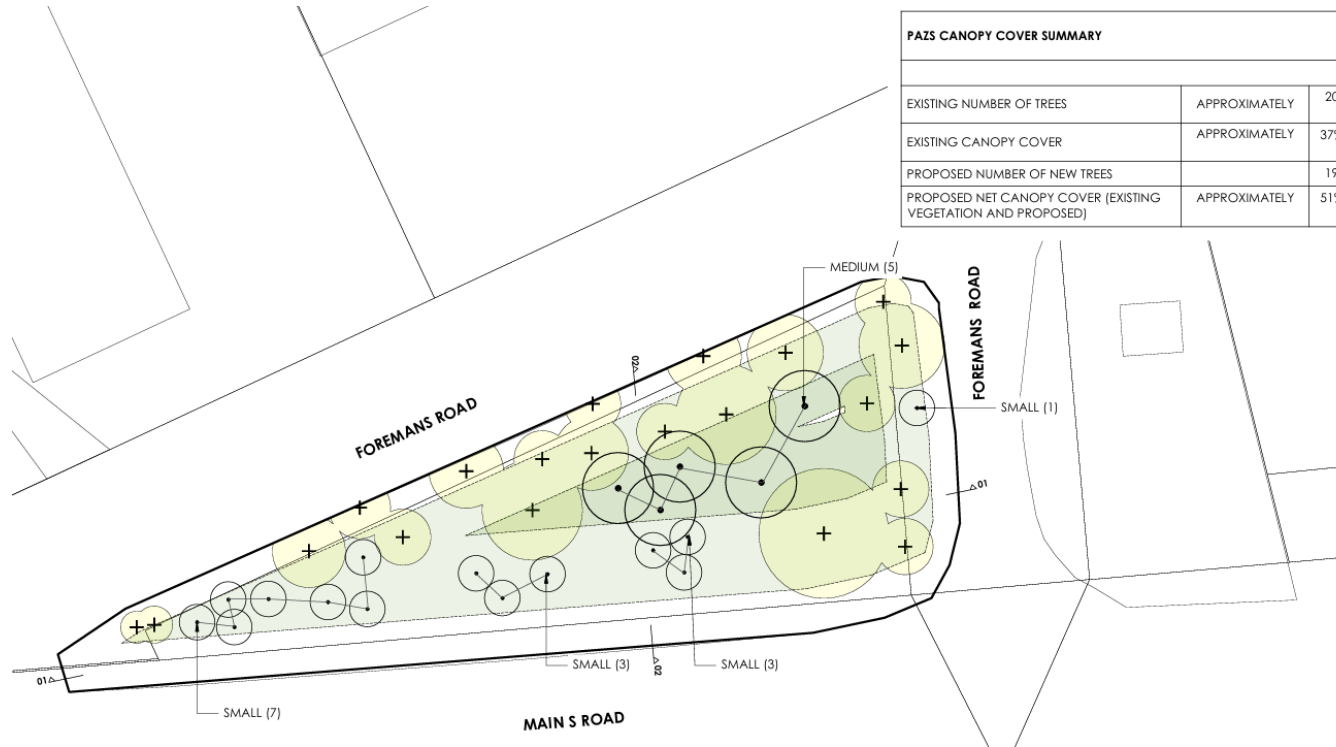
- **31 new trees**
- Increase in canopy cover from 50% to 72%

Dunbars Landscape Reserve



- **51 new trees.**
- Increase in canopy cover from 36% to 63% at maturity

Foremans Reserve



- **20 new trees.**
- Increase in canopy cover from 37% to 51% at maturity

Gloaming Reserve



- **12 new trees.**
- Increase in canopy cover from 19% to 55% at maturity

Kumara Reserve



- 10 new trees.
- Increase in canopy cover from 15% to 42% at maturity

Helmore Park



- **15 new trees.**
- Increase in canopy cover from 22% to 53% at maturity

Parera Park



- **53 new trees.**
- Increase in canopy cover from 6% to 59% at maturity

Quaifes Road Springlands



- 77 new trees.
- Increase in canopy cover from 9% to 18% at maturity

Somerville Reserve



- **24 new trees.**
- Increase in canopy cover from 5% to 27% at maturity

John Olliver Reserve



- **50 new trees**
- Increase the canopy cover in the park from 6% to 40% once they reach maturity.
- **Note** – Submissions received regarding maintenance, sufficient large tree setbacks, and request for native species.

Plans with no submissions but not included today

Decision Report 12th May 2026

- Caulfield Drainage Reserve & Greenaway Park, Halswell,
- Glen Kerran & Rannoch Drainage Reserve, Broomfield,
- Euphrasie & Heathcote Esplanade Reserve, Aidanfield,
- Kahuku Park, Wigram.

Further Meetings and Redesign

- Globe Bay Reserve
- Leslie Park

Plans which received Submissions for changes to plan

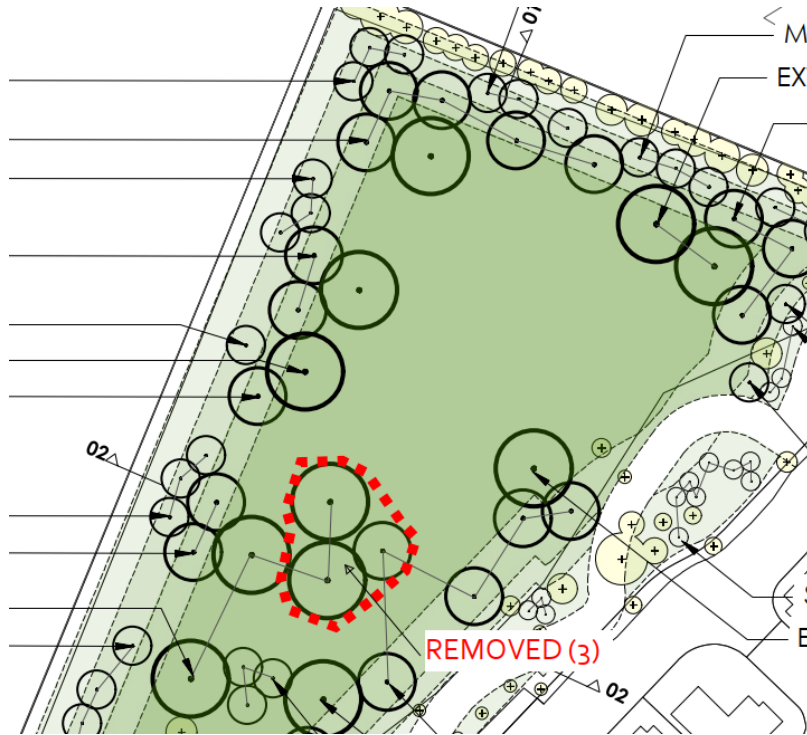
- F W Delamain Park, Yaldhurst
- Opouira Knights Stream Park, Halswell
- Raukura Park, Wigram
- Wycola Park, Hornby (note separate engagement)

F W Delamain Park

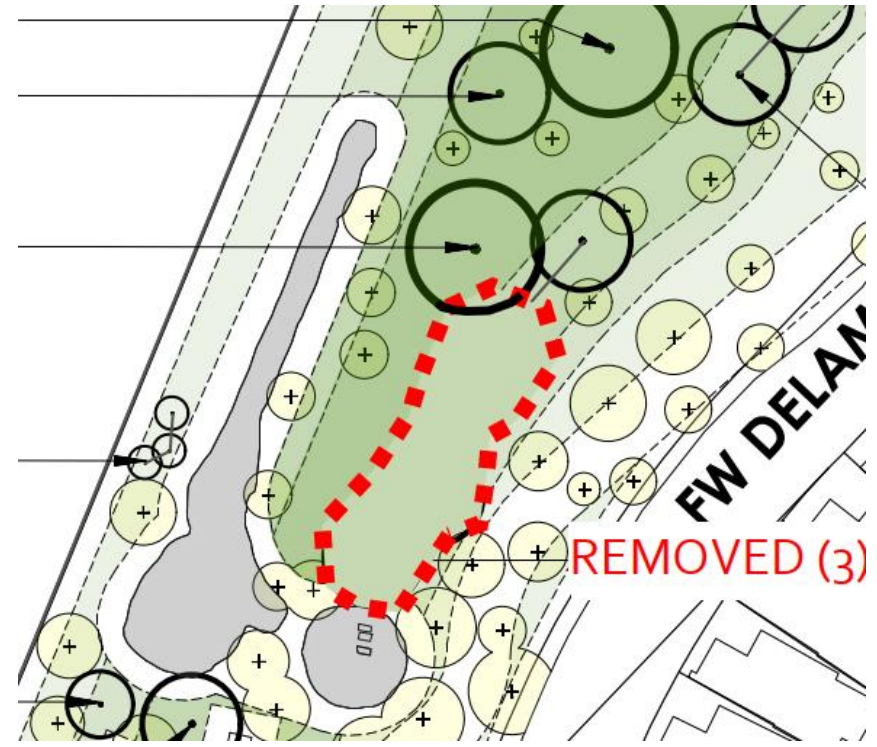
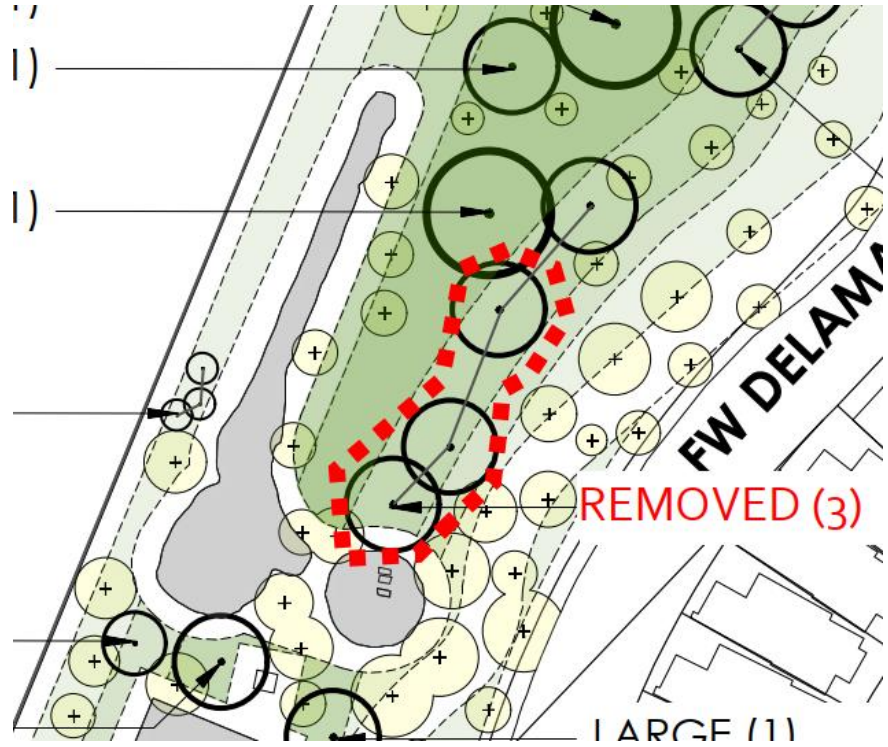


- The consulted planting plan proposed 109 new trees which would increase the canopy cover in the park from 15% to 36% once they reach maturity.
- Retaining unimpeded/unshaded open space in middle of park and by playground was the key theme in submission
- Changes made to address submissions see the revised tree total at **103 new trees**

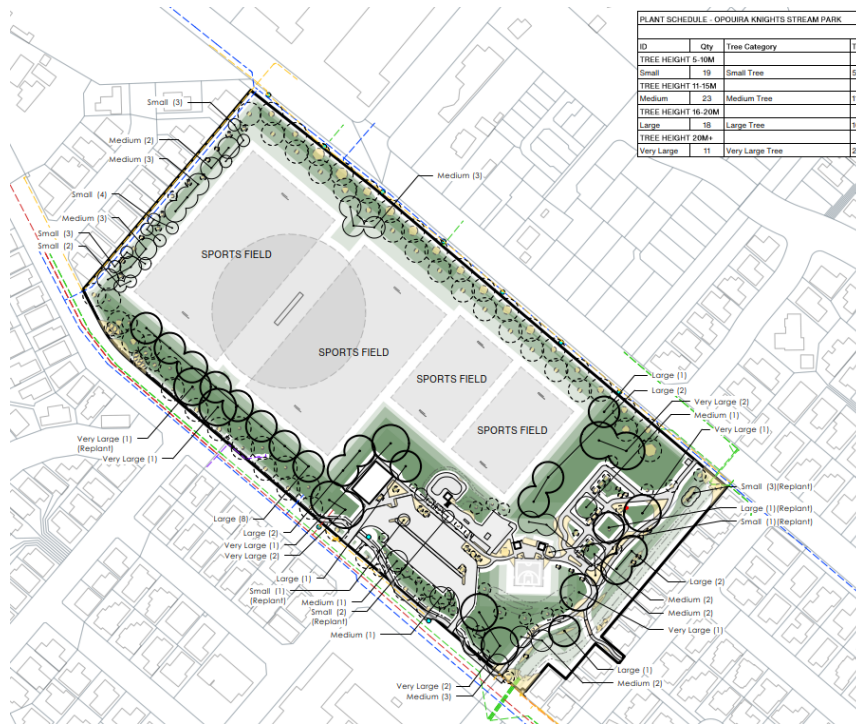
F W Delamain Park



F W Delamain Park

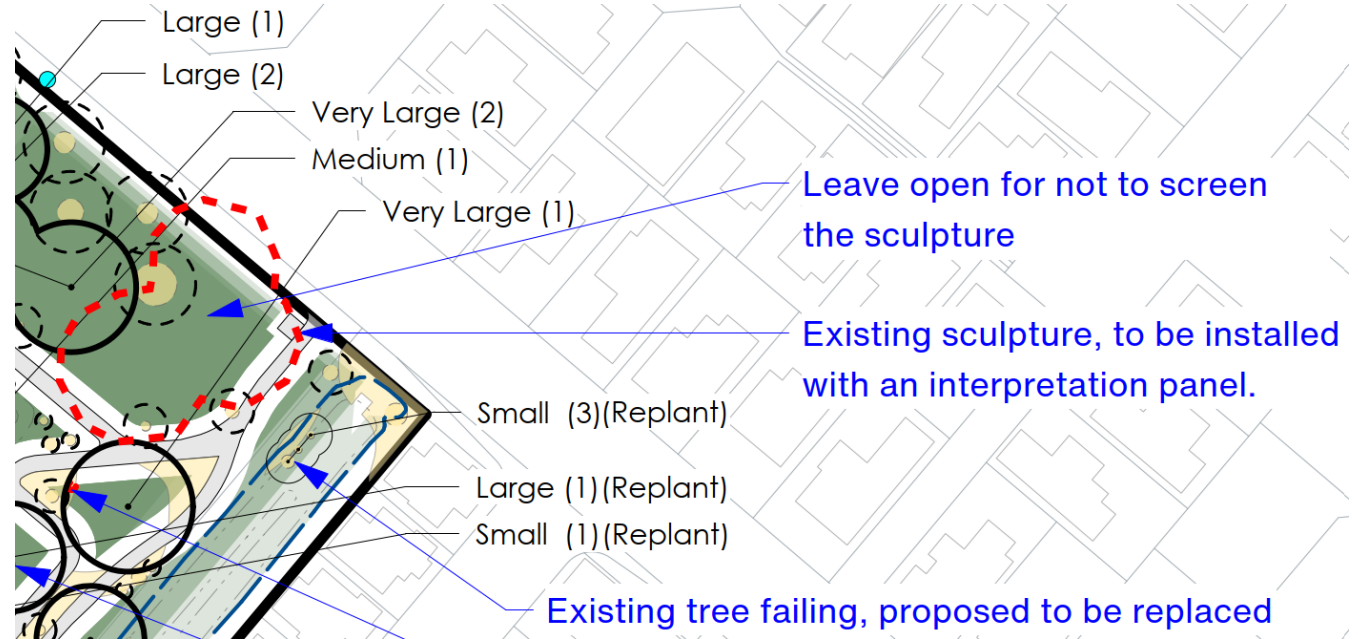
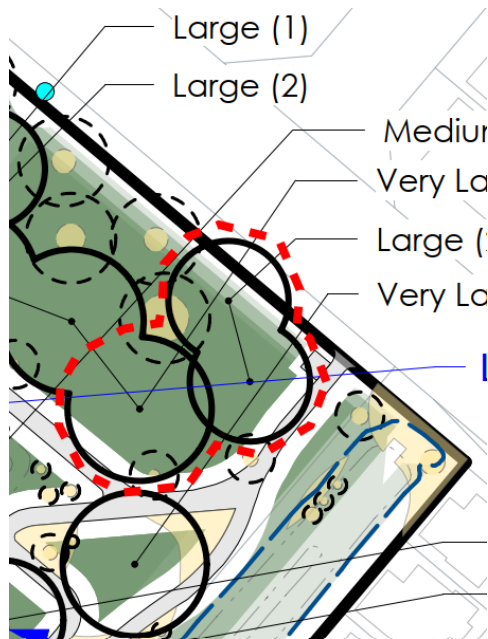


Opouira Knights Stream Park



- Amended plan to address submission of the Halswell Residents Association
- The consulted planting plan proposed 71 new trees which would increase the canopy cover in the park from 14% to 32% once they reach maturity
- The amended plan sees a slight reduction to **68 new trees**

Opouira Knights Stream Park



Wycola Park

Engagement Summary

- An initial plan was developed and went out for consultation in September 2024
- 57 submissions, 19 of which were strongly opposed, 6 somewhat opposed, 2 neutral and 30 either somewhat supported or strongly supported. Key concerns with the plan related to the following:
 - Shading on property (particularly on Manurere Street)
 - Safety concerns through loss of sight lines
 - Leaf fall
 - Shading of pathway
 - Too many trees proposed
- Two meetings were held with concerned submitters in the park
- Hello Hornby – engaged with directly regarding changes and impact on event use of space

Next steps

- For each park or reserve approved, staff will order trees for this planting season.
- Planting will begin in 2026 planting season and will be completed by the Councils internal tree planting team.
- Community planting days may also be utilised to assist with planting.



Questions