

Christchurch City Council MINUTES ATTACHMENTS

Date: Wednesday 1 April 2026
Time: 9.32 am
Venue: Camellia Chambers, Civic Offices,
 53 Hereford Street, Christchurch

TABLE OF CONTENTS NGĀ IHIRANGI	PAGE
6. Monthly Report from the Community Boards - March 2026	
A. Waihoru Spreydon-Cashmere-Heathcote Community Board - Monthly Update and Draft Annual Plan 2026/27 Submission - Presentation to Council	4
B. Waimāero Fendalton-Waimairi-Harewood Community Board - Monthly Update and Draft Annual Plan 2026/27 Submission - Presentation to Council	22
C. Waipuna Halswell-Hornby-Riccarton Community Board - Monthly Update and Draft Annual Plan 2026/27 Submission - Presentation to Council	29
D. Waitai Coastal-Burwood-Linwood Community Board - Monthly Update and Draft Annual Plan 2026/27 Submission - Presentation to Council	37
E. Te Pātaka o Rākaihautū Banks Peninsula Community Board - Monthly Update and Draft Annual Plan 2026/27 Submission - Presentation to Council	45
F. Waipapa Papanui-Innes-Central Community Board - Monthly Update and Draft Annual Plan 2026/27 Submission - Presentation to Council	52
3.1.1. Public Forum - Laura Fergusson Brain Injury Trust	
A. Laura Fergusson Brain Injury Trust - Presentation to Council	69
3.1.3. Public Forum - Non-Resident Nepali Association (NRNA)	
A. Non-Resident Nepali Association (NRNA) - Presentation to Council.....	78
3.1.4. Public Forum - South Island Wildlife Hospital	
A. South Island Wildlife Hospital - Presentation to Council.....	84
3.1.5. Public Forum - Jolt Dance Company	
A. Jolt Dance Company - Presentation to Council.....	105
3.1.6. Public Forum - AquaPave Permeable Concrete	
A. AquaPave Permeable Concrete - Presentation to Council	118
3.2.1. Don Gould	
A. Don Gould - Presentation to Council	129
3.2.1. Rebecca Robin	
A. Rebecca Robin - Presentation to Council.....	133
9. Christchurch Wastewater Treatment Plant Pond Odour Mitigation	

A. Council Workshop Notes and Officer Presentation - 1 April 2026..... 140

Waihoru Spreydon-Cashmere-Heathcote Community Board

Report to Council – 1 April 2026



Presenters: Keir Leslie (Chair), Sophie Bond (Deputy Chair)

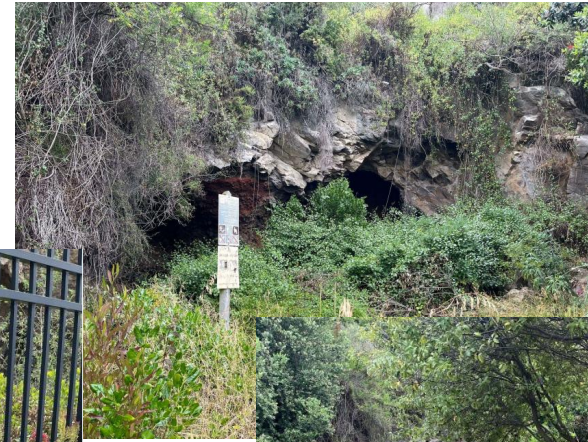
Mowbray Street - P5 Loading Zone



Cultural Heritage of Te Rae Kura Redcliffs Caves



Te Ana o Hineraki /
Moa Point Cave



Moncks Cave



3

Ōpāwaho Pathway Hunter Terrace Stage 1

LANDSCAPE CONCEPT SKETCH PLAN

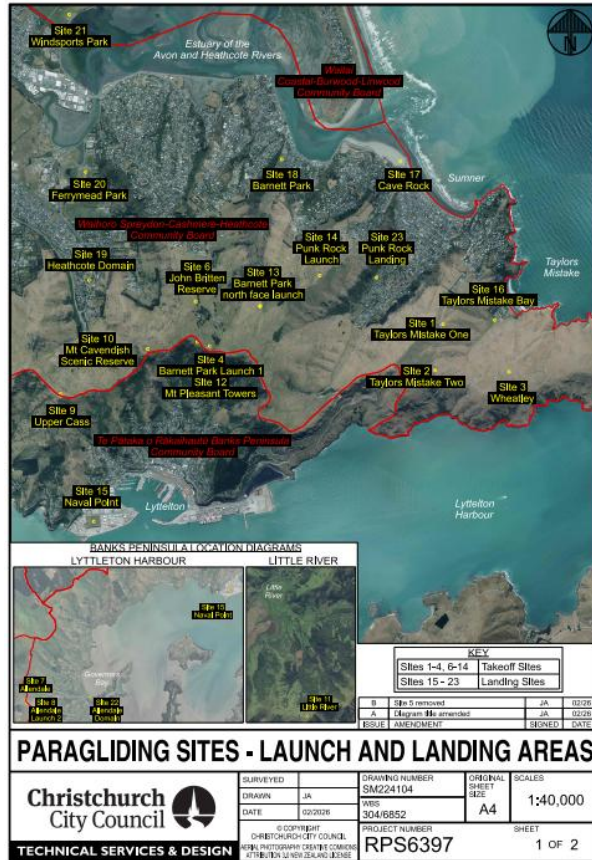
A 3m wide shared path with the option to add sittable terracing in the future.
An arrival space and ramp connecting to the northern entrance of Ōmōkihi.
Native planting to river banks with clusters of larger shrubs and trees.



4



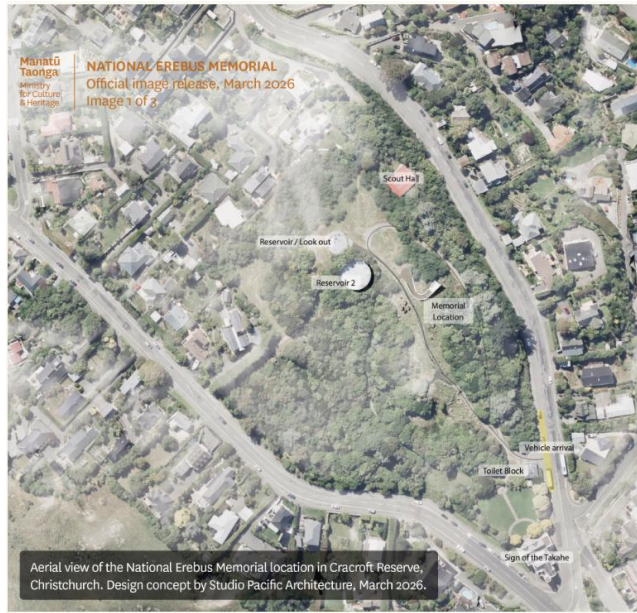
Port Hills Paragliding Schools - new licences



5

Memorial projects

National Erebus Memorial



Sydenham Cemetery Unmarked Graves Memorial

6

Community Board Plan 2026-28



7



Community Events



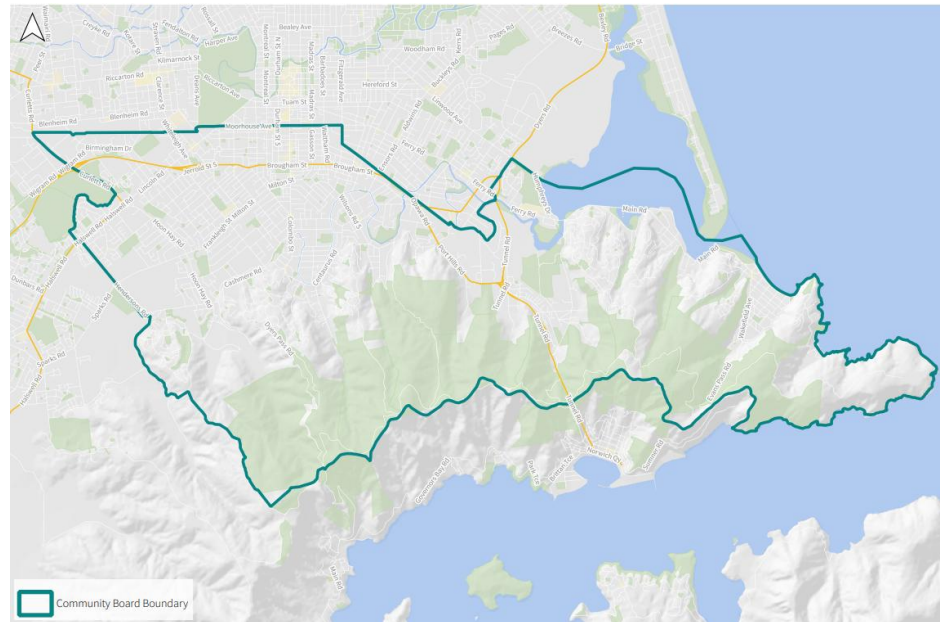
2026 PARA & BLIND LOW VISION LAWN BOWLS TOURNAMENT

Hosted by BARRINGTON UNITED BOWLING CLUB



Waihoru Spreydon-Cashmere-Heathcote Community Board

Submission on Council's Draft Annual Plan 2026/27



Presenters: Keir Leslie (Chair), Sophie Bond (Deputy Chair)

Draft Board priorities

Ki uta ki tai – From the Hills to the Sea

- **Port Hills Plan** - development, conclusion and implementation.
- **Sediment management** in the rivers and estuary
 - continued levels for funding for Port Hills Revegetation and Sediment Control Stage 1
- Historic **stormwater** discharge in hillside suburbs
 - 19398 Ōpāwaho - Heathcote Waterways Detention & Treatment Facilities - reduction of \$341,000 in 2028/29-34
 - 73550 - Programme - SW Heathcote Floodplain Management Implementation - reduction of \$162,000 in 2028/29-34



Ki uta ki tai – From the Hills to the Sea (cont'd)

- **Ōpāwaho Lower Heathcote Guidance Plan**
 - 45213 - Programme - SW Lower Ōpāwaho - Heathcote River Guidance Plan reduction of \$2,000 in 2026/27 and \$85,000 2028/29-34 in the proposed Capital Programme.
- **Ōpāwaho Heathcote River Network (OHRN)** - oppose reducing Contestable Grant funding to adequately support groups like OHRN.
- **Pest management, trapping projects and Ōpāwaho Heathcote River Planting Plan**
- **Planting in Red Zone areas**
 - 61723 - Programme - Red Zone Regeneration New Development – has a proposed budget reduction of \$22,000 in 2028/29-34.



Response to Intensification

- **SoMo (South of Moorhouse)** – activation of the area with events, placemaking and streetscape improvements.
- **Affordable housing options** – the Board supports high-quality and affordable housing options.
- **Waltham community connections**
 - 65005 - Waltham Park - Play Space Renewal is in the proposed Capital Programme is unchanged and the Board supports continued funding.
- **Greenspaces and trees**



Safe Transport Choices

- **Cycleways** – the Board supports linking nearby existing cycleways within the transport network and the delivery of planned Major Cycleway Route (MCR) projects.
- The Board opposes the reduction of funding for cycleways in the proposed Capital Programme:
 - Ōpāwaho River Route (Section 1) Princess Margaret Hospital to C - reduction of \$2,000 in 2026/27 and \$176,000 in 2028/29-34
 - Major Cycleway - Ōpāwaho River Route (Section 3) Waltham to Ferrymead Bridge - reduction of \$6,000 in 2026/27 and \$653,000 in 2028/29-34
 - Major Cycleway - Ōpāwaho River Route (Section 2) Corson to Waltham - reduction of \$4,000 in 2026/27 and \$64,000 2028/29-34
 - Major Cycleway - Southern Lights Route (Section 1) Strickland to Tennyson - reduction of \$2,000 in 2026/27 and \$33,000 2028/29-34
 - Local Cycle Network - Opawa & St Martins - reduction of \$1,000 in 2026/27 and \$2,000 2028/29-34
 - Local Cycle Network – Ferrymead - reduction of \$3,000 2028/29-34
- **Cycle parking and end-of-trip facilities**

5

Safe Transport Choices (cont'd)

- **Safer transport on hills** - through smart design choices and improvements
- **Bus infrastructure** – priority lanes and improved shelters.
- **30kp/h speed areas** – traffic solutions to promote adherence to 30kp/h speed areas.
- **School safety** –support school safety with crossing points, sight lines, and pedestrian access changes.
- **Selwyn Street Masterplan**
 - Board supports the delivery of the Selwyn Street Masterplan and continued funding, which moved from the 2026/27 financial year to 2027/28.
- **Sydenham Masterplan** – funding to deliver the Sydenham Masterplan.



Parks & Recreational Amenities

- **Non-structured play elements in parks** – nature, recreation and non-structured play elements in parks
- **Somerfield Park toilet renewal** – renewal or construction of a new standalone toilets
 - 80996 - Somerfield Park Toilet Renewal – \$304,000 in 2026/27
- **The pathway at Barrington Park** – hard surface pathway at Barrington Park
 - part of Community Parks Rolling Renewal Programme
- **Vernon Terrace public toilets** – Board continues to advocate for access and facilities at the base of the Rapaki Track.
 - 69975 - Vernon Terrace Public Toilets Renewal – \$317,000 2026/27.
- **Unmarked Graves** – funding to acknowledge the unmarked graves at Sydenham Cemetery

7

Parks & Recreational Amenities (cont'd)

- **Addington Park Community Garden and adjacent facility** –development of Addington Park Community Garden and adjacent facility
- **Hoon Hay Pavillion** – support for successful upgrade of the Hoon Hay Pavillion
 - project 74022 - Hoon Hay Sports Pavilion and Toilets – \$419,00 in 2026/27.
- **Basketball Court at Ti Rakau Reserve** – support for the development of a Basketball Court at Ti Rakau Reserve.
- **Coastal Pathway & Moncks Bay** – concerned with the proposed budget reduction of \$600,000 in 2028/29-34 for project 71306 - Coastal Pathway & Moncks Bay - Council Funded in the proposed Capital Programme.



Community Resilience

- **Local community hubs** – resourcing and preparedness of local community hubs
- **Rooftop solar and battery storage** – investment in rooftop solar and battery storage
 - Supports Ōmōkihi to be established as a community-based solar hub & emergency centre - installation of solar panels
 - Ōmōkihi to be included on the list of facilities for solar installation, 82510 - Facilities Solar Panel Installation in the proposed Capital Programme.

Activation of Ōmōkihi and Surrounds

- **Hunter Terrace, surrounding Ōmōkihi** – Ōmōkihi Shared Pathway and Hunter Terrace Landscape Plan and delivery of Hunter Terrace Pump Track and Basketball Court
- **Mid-Heathcote Master Plan** – review of mid-Heathcote Master Plan and its implementation
 - funding outlined in the proposed Capital Programme project 1410 - Mid Heathcote Masterplan Implementation \$72,00 in 2026/27.

9

Main proposals

- **The Climate Resilience Fund** – continue to fund by maintaining the 0.25% rates increase
- **Contestable community grants** – not support reducing some contestable grant schemes
- **Environmental Partnerships Fund** – support to increase the Fund by \$300,000.
- **Potential disposal of Council-owned properties**
 - a first right of refusal is offered to former homeowners; and
 - properties at 156 McCormacks Bay Road, 4 and 6 Balmoral Hill Road - subject to an investigation into historical significance and burial site

Other matters

- **Grange street** – notes the concerns raised by residents on Grange Street and the request for a Transport Street Renewal.

10

Waimāero Fendalton-Waimairi-Harewood Community Board

Presentation to Council – 1 April 2026



Presenters: Jason Middlemiss (Chair), Nicola McCormick (Deputy Chair)

School Principals' Meeting

The Board was pleased to host our first school Principals' meeting for the year on 18 March 2026.

Fifteen of our local principals attended and shared some of the issues they have, mainly involving traffic safety.



2026-28 Community Board Plan

Community consultation on our draft Community Board Plan priorities closed on 15 March 2026.

Our Board members have been going through the submissions and are really pleased to see overwhelming support for all of our nine priorities.

 <p>Safety improvements at the Withells Road/Yaldhurst Road intersection</p> <p>The primary safety concern at this intersection relates to right turn movements both into and out of Withells Road, which have a higher likelihood of resulting in severe crashes.</p>	 <p>Safety improvements for the pedestrian crossing at Avonhead School - Rakipapa on Avonhead Road</p> <p>Safety improvements at the pedestrian crossing outside Avonhead school, with their preference being the installation of a signalised pedestrian crossing.</p>	 <p>Improvements to facilities at Burnside Park</p> <p>Investing in fit-for-purpose, accessible, and sustainable facilities at Burnside Park will support long-term community resilience, enhance inclusivity, and ensure the park continues to thrive as a shared hub for all users.</p>
 <p>Community Traffic Safety Committee - Merivale pilot project</p> <p>The pilot aims to improve safety for all road users while feeding into longer-term transport planning and making the neighbourhood safer and more liveable for everyone.</p>	 <p>Elmwood Park playground renewal</p> <p>The renewal of the playground is currently scheduled for 2029 but the Board and the local community would like to see this happen sooner.</p>	 <p>Strengthening Community Connections in Bryndwr</p> <p>Strengthening connections will build on existing strengths, reduce isolation, and foster a strong, inclusive sense of belonging and local pride.</p>
 <p>Belfast Road improvements (Blakes to Main North Road)</p> <p>Improvements to Belfast Road and establishing a strategic plan to connect Belfast's residential areas separated by industrial zones.</p>	 <p>Radcliffe Road railway crossing safety improvements</p> <p>The plan for a safe pedestrian/cyclist crossing over the railway line is yet to be approved by KiwiRail. Our Board is keen to continue to advocate strongly for a plan to be approved and implemented.</p>	 <p>Sheldon and Nunweek Park improvements</p> <p>Sheldon Park is a vital recreation space that would benefit from upgrades. Nunweek Park has been identified as a priority for improvements as part of the Sports Field Network Plan.</p>

Kia Ora Burnside – Connect@Kendal Event



Approximately 700 people attended the Belfast FRESH Event held at Sheldon Park on 15 February 2026, hosted by the Belfast Community Network.

Activities included free hair braids, barber cuts, basketball competition, crazy bikes and more!



Draft 2026/27 Annual Plan Submission

Thank you!



Waipuna Halswell-Hornby-Riccarton Community Board Report to Council – 1 April 2026

Te kaipāhō (Presenters): Marie Pollisco, Chairperson



1



2

Community Board updates

- ECAN Submission
- Awatea Athletics at Te Kāhu Park



Awatea Athletics Club – Te Kāhu Park



3

Hapori Hui – Learn, Lead, Connect

The hui brought together more than 40 leaders and organisations and focused on building relationships, shaping shared community aspirations, and creating space for kōrero with Community Board members.



4

Connect 2026



Held at Harrington Park this free community event brought Riccarton residents together to share an array of food, enjoy activities, and take part in friendly competitions, such as the popular tug of war, strengthening local connections.

*Photography: Achilles
Photography, Christchurch*

Philippines Day 2026

The festivities featured games and activities, live music, cultural dances, and a variety of delicious Filipino dishes, offering a welcoming space for connection and an opportunity to enjoy Filipino culture.



Annual Plan Submission

7



Thank you!

Waitai Coastal-Burwood-Linwood Community Board

Report to Council - April 2026



Highlights from the Board Area

Estuary Fest 2026



Highlights from the Board Area

Bromley Community Fair



Highlights from the Board Area

Summer with your Neighbours



SUMMER WITH YOUR NEIGHBOURS



Advocacy



**Wastewater
Treatment Plant**



**Board Priority Potential
Reutilisation of the Smith Street
Service Centre**

Annual Plan Submissions – Key Projects



Pages Road Bridge



Ōtākaro Avon River Corridor – MCR City to Sea

Annual Plan Submissions – Key Projects



Burwood and Bexley Landfills



Burwood/Mairehau Roads – Intersection Improvements

Thank you!

Te Pātaka o Rākaihautū Banks Peninsula Community Board Report to Council – March 2026



Presenters: Lyn Leslie, Chairperson & Nigel Millar, Deputy Chairperson

Continuing Flood Recovery

- Loss of Communications
- Psycho-social recovery
- Community Resilience Hubs
- Flooding Round Table Group



Ātaahua Community Trust

New community trust formed in 2025 to:

- Create a vibrant, caring, connected and resilient community.
- Manage Kaituna hall, Domain and cricket pavilion.
- Create community emergency readiness.
- Enhance natural environment and preserve history.



Ātaahua Community Trust...

Activities to date:

- Hall functions - hire out & local events
- Christmas get together
- Domain use (e.g. cricket)
- Emergency preparedness: Okuti Hall / Red Cross collaboration
- ‘Summer with your neighbours’ - ‘Celebrating our community’
- Umbrella group for Kaituna Collective Weeding Team initiative
- Cricket with Birdlings Flat in the New Year 2026, cricket becoming the home-ground for BP team



Lyttelton Harbour Whakaraupō Information Centre



- Governed by a Trust
- Funded by grants and donations
- Open 363 days each year
- 26 volunteers + paid coordinator (15 hours/week)
- 2025: 10,527 visitors of which 1,841 were cruise ship passengers
- Serve local community and visitors (from near and far)

Annual Plan





Thank you!
Ngā mihi nui!



Waipapa Papanui-Innes-Central Community Board

Report to Council for April 2026



Presenters: Dr Sunita Gautam and Simon Britten
1 April 2026



Public Forum

9 March 2026

- Ruth Davies – Neighbourhood Trust regarding the work they do (*top*)
- Dave Gardner – Cranford Basin & other issues (*centre*)



Deputations

- Dr Krzysztof Pawlikowsky – Little Poland Park – Landscape Plan Approval (*bottom*)



Community Liaison

Summer with your neighbours

- Atlas Apartments (*top*)
- Redwood Playcentre (*centre*)

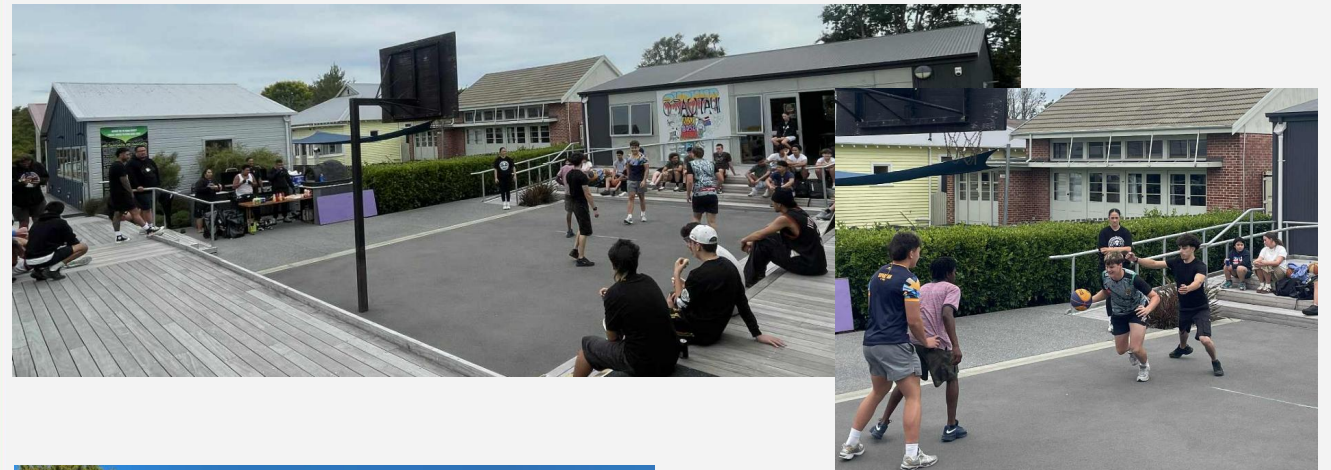


Strengthening Communities Together
Enabling active and connected communities to own their futures

Community Liaison

Community Events

- Papanui House of Hoopz (top)
- Petrie Park community clean up (bottom)



Strengthening Communities Together
Enabling active and connected communities to own their futures

Community Liaison

- Saraswati Festival 2026 *(top)*
- Summer in the Styx *(bottom)*



Strengthening Communities Together
Enabling active and connected communities to own their futures

Community Liaison

Richmond Community Garden and Riverlution

- New Gazebo
- Richmond Gala



Avebury House, Richmond Community Garden & We Are Richmond present

Richmond Gala 2026

10AM TO 2PM | SATURDAY 28 MARCH
9 EVELEYN COUZINS AVE & 46A VOGEL ST, RICHMOND

*Craft Vendors * Car Boot Sale * Food Trucks * Devonshire Tea
Fun and Games * Fresh Produce * Preserves Competition
Live Music and much more!*

Preserves Competition!

Richmond Community Garden invites you to put your preserves to the test and bring them along between now and March 28th. They will be carefully labelled and then judged by a panel of expert picklers, preservers and punters! Results will be revealed at the Gala! Please contact Morgane at admin@richmondcommunitygarden.co.nz for further details.

DEADLINE FOR ENTRIES: MARCH 28TH
DROP OFF: RIVERLUTION ECO HUB, 46A VOGEL ST
OPEN MONDAY: FRIDAY 9AM - 4PM AND SATURDAY 10AM-1PM
CATEGORIES: JAMS, PICKLES & CHUTNEYS, DRINKS & VINEGARS

WONKY VEG COMPETITION

THE MOST GARGANTUAN MARROW!
Who wins the cut the day it's a challenge and day it's a challenge... take this opportunity to test your growing fun and see who can produce the most gargantuan marrow!

THE LONGEST BEAN!!
Be it runner beans, string beans, butter beans, borlotti, or any other bean... bring your longest bean to the Hub for judging!

FUNKIEST-SHAPED VEGETABLE!
Who wants to try out perfectly-shaped veg? Bring them to Richmond Community Garden for the ultimate challenge. Bring your most unusual and funky vegetables for our judges to judge!

Bring the unusual fruits of your labours for judging on Gala Day, Saturday March 28, between 10am and 11am. Drop off is at the Hub. Winners announced at 1pm.

Strengthening Communities Together
Enabling active and connected communities to own their futures

Community Liaison

Phillipstown Party for the People!



Strengthening Communities Together
Enabling active and connected communities to own their futures

Board Site Visit

- St James Avenue Trees



Strengthening Communities Together
Enabling active and connected communities to own their futures

Thank you!



Waipapa Papanui-Innes-Central Community Board

Draft Annual Plan 2026-27 Submission



Presenters: Sunita Gautam and Simon Britten
1 April 2026

Community Investment Matters

- Keep rates low as possible while ensuring levels of service are maintained that affect community wellbeing and safety.
- Strong communities make for a thriving city for which community development, funding, and resilience is vital.
- Strategic support for community groups, volunteers and spaces delivers underappreciated results and savings.
- Deferring or underfunding essential renewals and resilience projects will create greater financial burdens in future years.

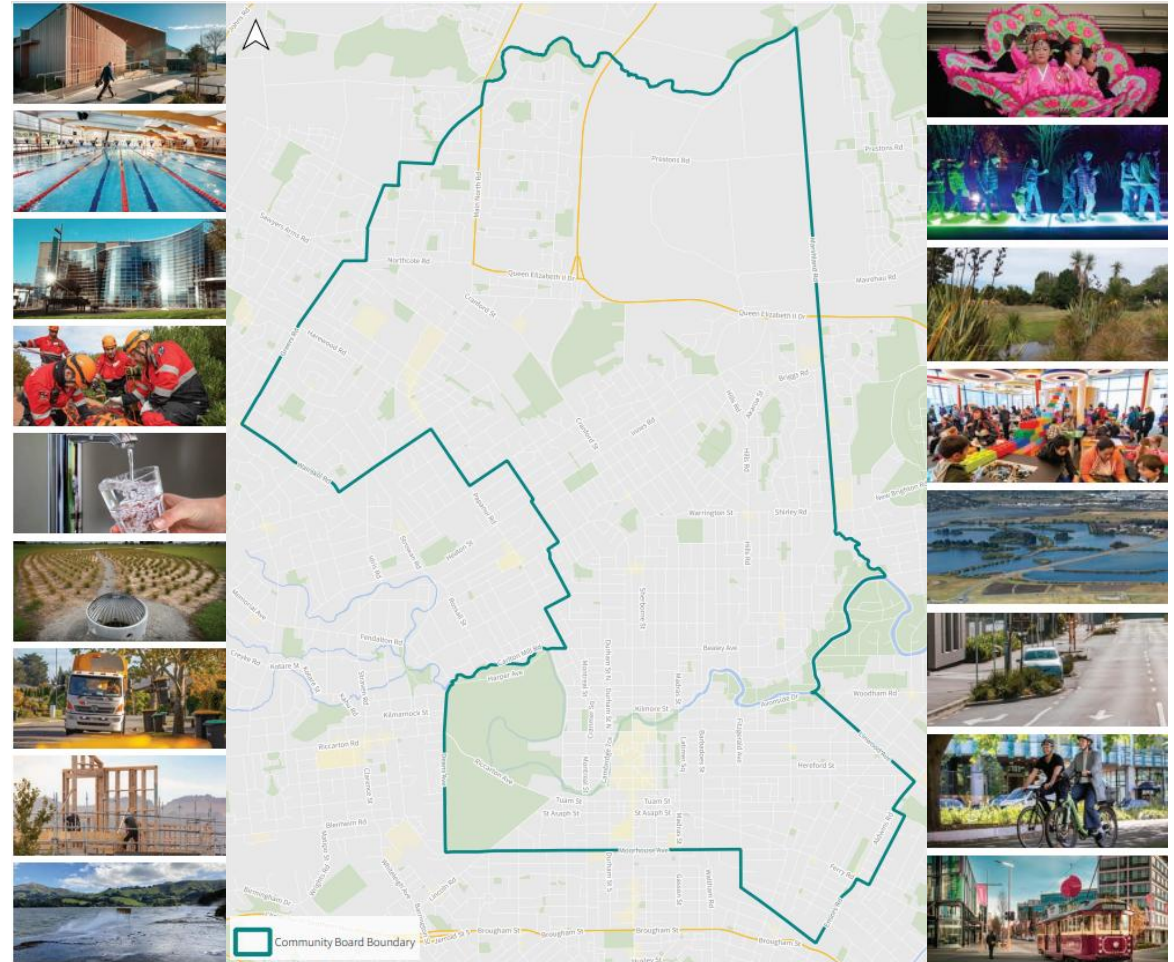


Strengthening Communities Together

Enabling active and connected communities to own their futures

What Matters for Waipapa Papanui-Innes-Central

- Climate Change & Climate Resilience
- Drinking Water
- Road and Footpaths
- Travel Choice
- Parks and Gardens
- Community Development
- Community Funding



Strengthening Communities Together

Enabling active and connected communities to own their futures

A Safe, Efficient Transport Network

School Safety & Road Safety Interventions

- Safe crossings for students
- Retain funding for road safety programmes

Safe and Efficient Transport Corridors

- Northcote Rd corridor & Greers/Sawyer Arms intersection safety
- Langdons-Northcote-Main North Road Block efficiency study
- Red light cameras at the Westminster Street/Cranford Street and English Park pedestrian traffic signals
- Downstream Effects Management Plan (DEMP)

Planning for Growing, Resilient & Thriving Communities

- Grassmere site access from Cranford Street to reduce pressures
- Timely completion of MCRs & local cycle connections
- Central city shuttle scoping study



Strengthening Communities Together

Enabling active and connected communities to own their futures

Green Community Anchor Projects

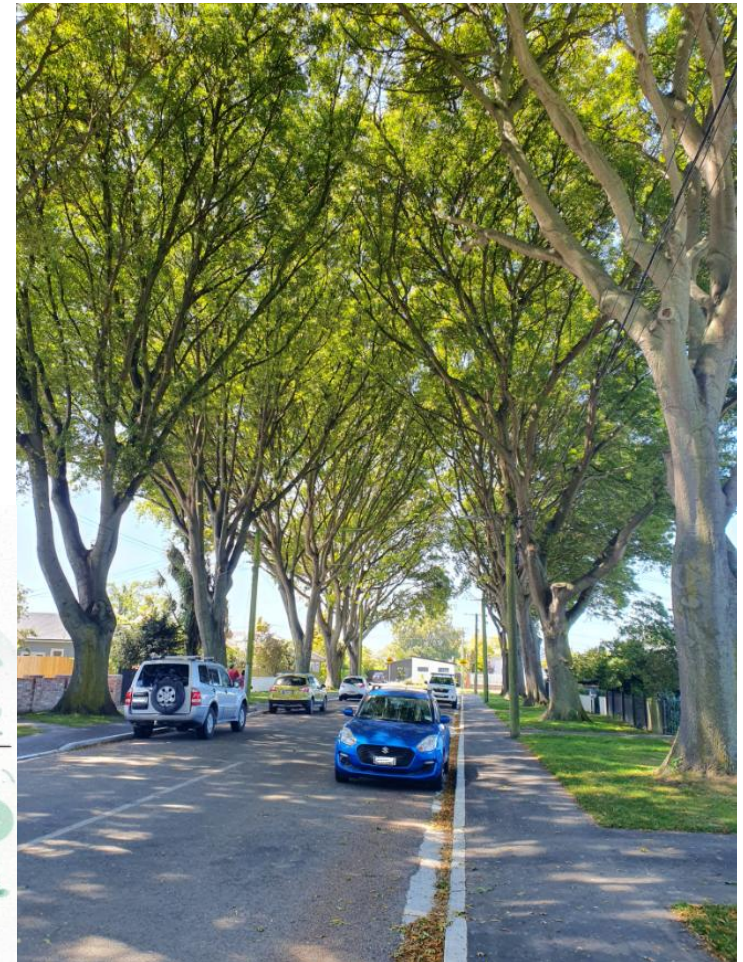
- MacFarlane Park – renewals, CPTED & planning
- Retain the current funding for:
 - Westminster Park
 - Shirley Community Reserve
 - Phillipstown Community Hub
 - Papanui Youth Project
- Greening the East 2.0
- Micro Forests or Orchard Gardens in urban spaces
- Grassmere development and green community spaces
- Digital equity and the importance of libraries & community facilities



Looking after our people, trees & assets

Capital & operational budgets that enable:

- Strategic management of ageing street trees
- Addressing exceptional situations that a source of distress e.g. Dudley Street startling nuisance
- Street renewals e.g. Somme St
- Community Safety initiatives
- Factoring for Urban Growth
- Investing in Three Waters



Water supply



Wastewater



Stormwater

Strengthening Communities Together

Enabling active and connected communities to own their futures

Strong Communities Prep & Plan

Flood Mitigation

Retain the surface flooding reduction programme, and regularly review areas affected by significant rain.

Climate Change Mitigation + Adaptation & Resilience

Support for Climate Resilience and Environmental Partnerships funds, and climate mitigation goals.

Support for adaptation planning and building up our resilience to climate change hazards & emergencies.

Community Preparedness

Support for community groups, facilities, and CDEM in planning for AF8 and disaster response & recovery.



Strengthening Communities Together

Enabling active and connected communities to own their futures





Thank you!



Waipapa Papanui-Innes-Central
**Community Board
Plan 2026-28**



Strengthening Communities Together
Enabling active and connected communities to own their futures

Christchurch
City Council

Laura Fergusson Brain Injury Trust deputation to the Christchurch City Council

Jasmine Harris Fundraising & Marketing Manager
Kathryn Jones CEO

March 2026

Who we are and why we're here

We're here to share our journey, raise awareness, and seek your continued support for our vital work.



How we help

- We employ over 240 staff in the Canterbury Region.
- Our team includes support workers, speech language therapists, physiotherapists, occupational therapists, clinical psychologists, neuropsychologists, dietitians and social workers.
- 1,120 clients receive services from us on any given day.
- We provide advocacy for disabled people e.g. housing.
- We provide employment for disabled people within our social enterprise, Can Do Catering.

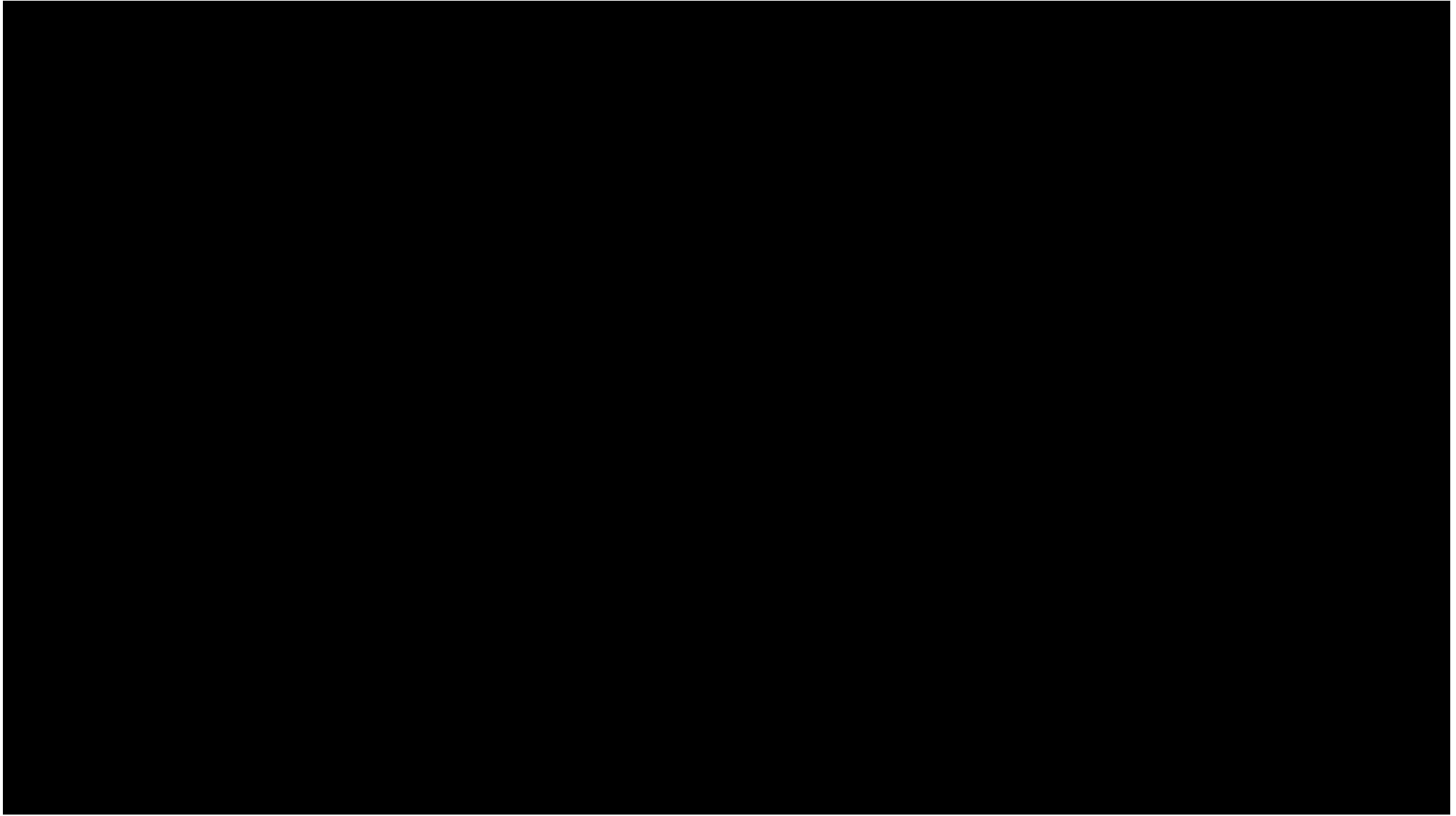


Our Social Enterprise – Can Do Catering

Can Do Catering employs people with brain and complex injuries, who would normally find gaining paid, purposeful employment very challenging, due to their physical impairments and care needs.



 Laura Fergusson
Brain Injury Trust





Our Redevelopment Journey

279 Ilam Road

An ageing building (opened 1979), out of date model of care. We need to relocate 30 disabled residents with high and complex 24/7 needs to modern housing.

- 2021 – Purchased land 126 North Parade, Richmond with savings (former Marian College site)
- 2024 – CCC resource consent approved to build
- 2025 – Ecan and CCC consent approved to repair the bridge over Dudley Creek
- March 2026 – Ilam Road site on the market to sell
- 23 March 2026 – Bridge repairs began



Laura Fergusson
Brain Injury Trust



Christchurch City Council



Our project aligns
with CCC strategic
priorities

And we need your support and advocacy for
the project



Laura Fergusson
Brain Injury Trust

Questions?



NEPAL FESTIVAL 2026

Dr. SULAV PAUDEL

Non-Resident Nepalese Association (NRNA)

Christchurch City Council Meeting



Introduction



First-ever Nepal Festival in the South Island, marking a milestone for cultural representation and inclusion in Christchurch.

Celebrates and promotes Nepalese heritage, culture, arts, and traditions for present and future generations.

Strengthens the long-standing Nepal–New Zealand friendship, including historic links through Mount Everest and people-to-people connections.

Creates an inclusive cultural experience for all communities in New Zealand, not just the Nepalese diaspora.

Supports multicultural understanding and social cohesion by showcasing Nepal’s culture in a family-friendly, public setting.



When and where

18 April 2026 (Saturday)

11:00 AM to 5:00 PM

455 Hagley Avenue, Christchurch (Multicultural Recreation and Community Center)

Free-Event

Highlights

**Multicultural parade
Festival introduction & national
anthems**

**Cultural performances (local artists &
band from Nepal)**

Everest Heritage storytelling session

**Guided tour of Nepal tourism & cultural
stalls**

**Stalls from some NGOs working in
Nepal**

Authentic Nepalese Cuisine

**Interactive quiz on Everest & Nepalese
culture**



OTHER HIGHLIGHTS

OVERWHELMING SUPPORT

- MORE THAN 20 COMMUNITY ORGANIZATIONS FROM SOUTH ISLAND
- FINANCIAL SUPPORT FROM COMMERCIAL PARTNERS (12 FROM New Zealand - 2 from Australia)
- FUNDING SUPPORT FROM CHRISTCHURCH CITY COUNCIL AND PUB CHARITY
- CLOSE COLLABORATION WITH MULTICULTURAL CENTER

NEPAL Festival 2026
April 18 | Christchurch | New Zealand

Celebrating Culture, Community & Connection
Join for a spectacular day filled with culture, colour, music, food, & community celebration.

What to Expect:

- Live Music & Cultural Performances
- Traditional & Modern Dance
- Authentic Nepali Cuisine
- Market Stalls
- Cultural Exhibitions
- Family-Friendly Activities

Guest Artist
Pashupati Sharma
LIVE BAND

TITLE SPONSOR
expert™
EDUCATION | VISA

GOLD SPONSOR
DURGESH ADHIKARI
Mortgage Advisor | Christchurch

TOUR BY
DAJU BHAI

BRONZE SPONSOR
HABIN ACHARYA

VENUE
455 Hagley Avenue,
Christchurch Central City

TRAVEL PARTNER
BUDDHA
travel & tours

MEDIA & PRODUCTION PARTNERS
www.nznewsnepal.com



INSPIRED BY THE HISTORIC FRIENDSHIP OF SIR EDMUND HILARY AND TENZING NORGAY, A SYMBOL OF THE ENDURING BOND BETWEEN NEPAL AND NEW ZEALAND.

IN ASSOCIATION WITH

SUPPORTED BY

EMBASSY OF NEPAL CANBERRA | HONORARY CONSUL OF NEPAL TO NEW ZEALAND | Christchurch City Council | Pub Charity | Lottery Grants Board

THANK YOU AND WE HOPE TO SEE YOU ALL THERE ON 18 APRIL 2026

Fostering connection and showcasing heritage	
 Showcase	 Connect
Presenting the vibrancy of Nepalese music, traditions, and cultural heritage to the broader Christchurch public.	Fostering deep community spirit and serving as the essential gathering touchstone for New Zealand's Nepali diaspora.

South Island Wildlife Hospital





South Island
Wildlife
Hospital

About us:



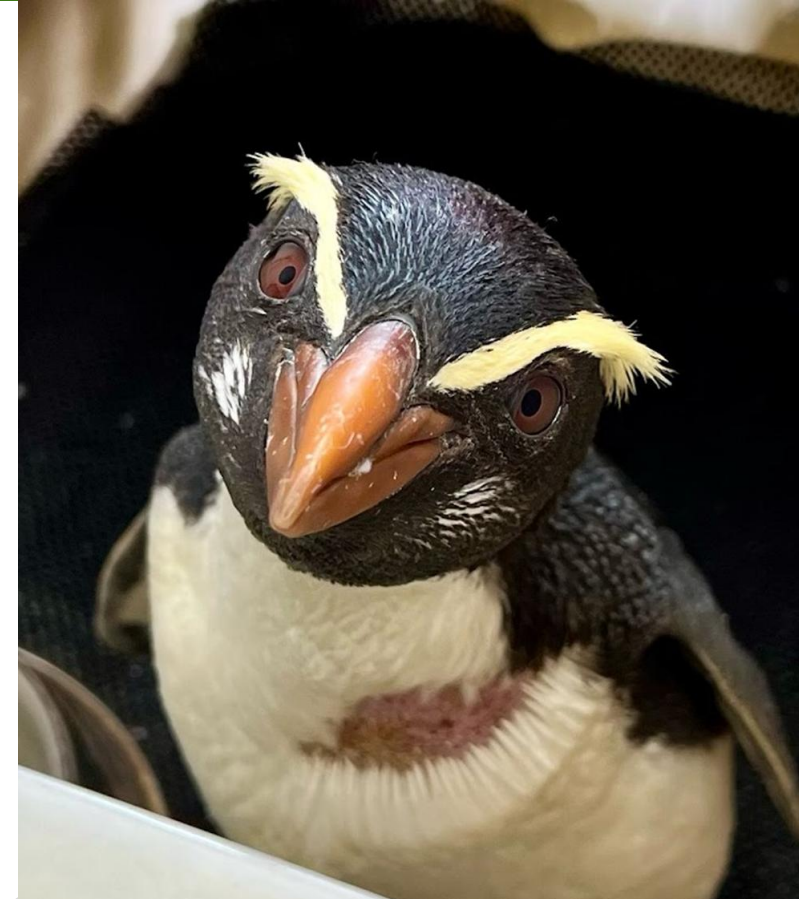
A registered charity since 2007, with doors opening to the clinic in 2014. Providing critical high quality veterinary care to wildlife for release back to the wild. Running entirely on sponsorship and donation.



Our team: Highly qualified wildlife vets (1 full time and 2 part time), over 50 dedicated local volunteers, board of trustees and fundraising group



We are **critical infrastructure** for conservation in Christchurch contributing to biodiversity resilience



Community Partnership



Contributes to our city's story:

A Wildlife Hospital (Eco hub) our city is a special positive contribution to the area, so many engagement, learning and teaching opportunities

Community led:

45 volunteers turn up 7 days a week 52 weeks a year

Kaitiakitanga:

A privilege to care for native wildlife Taonga species

Education/Teaching hospital:

Specialist training opportunities with wildlife vet oversight provides pathways for volunteers to further education, careers in conservation

Support conservation groups:

ie Pohatu Penguins, Kea Conservation trust.



South Island
Wildlife
Hospital

What we do:



Provide advanced wildlife veterinary care, rehabilitation and release.



Providing ecosystem support and ensure genetic diversity, especially of threatened and keystone species.



Biomonitoring and disease surveillance. Early warning system of environmental health for both people and wildlife



Disaster response
eg.... oil spills, botulism outbreaks, HPAI



Education and Research
Wildlife veterinary teaching hospital, we train everyone from vets to community volunteers, have extensive research collaborations.



Empower community conservation through collaborations and outreach programmes, promoting stewardship and mitigating human-wildlife conflicts





South Island
Wildlife
Hospital

Bittersweet statistics:

Grateful for public engagement but increasing numbers signal changes in our environment.

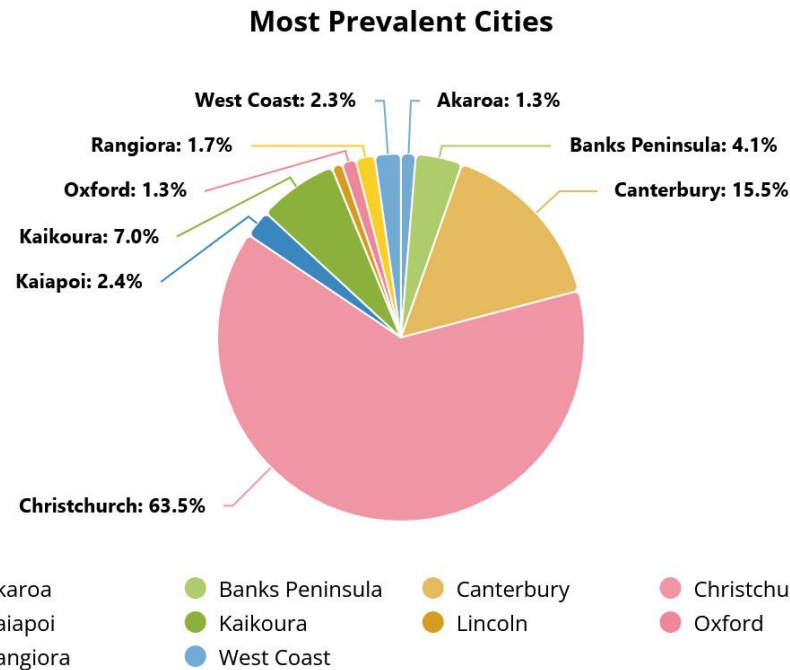
Last year (2025) saw a record number of admissions.....

- *671 patients admitted*
- *77 species treated*
- *Nearly 70% survival rate*
- *Jan/Feb 2026 not slowing down*

High quality, veterinary care with extensive experience. Husbandry, medical treatments, surgery and rehabilitation treating a wide variety of species.



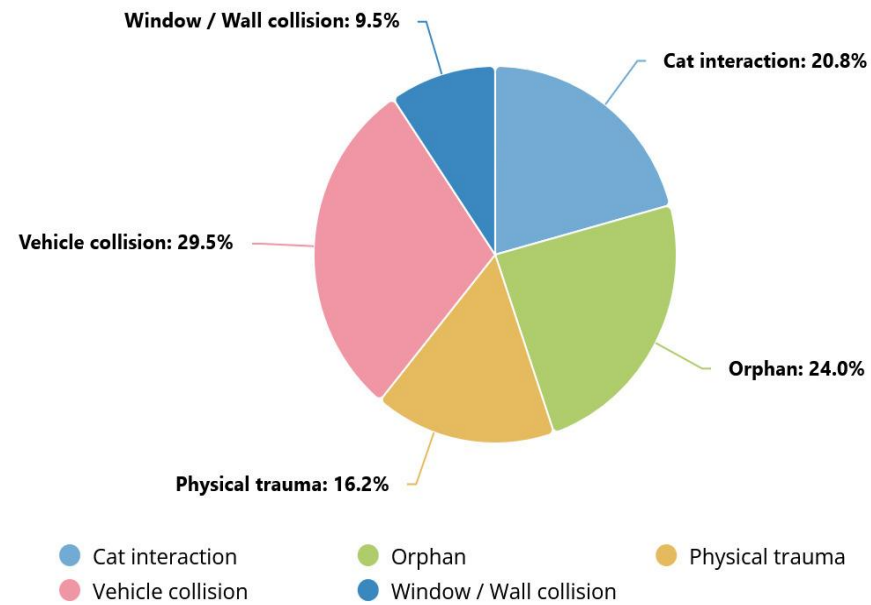
Where wildlife admissions come from



Cause of Admission



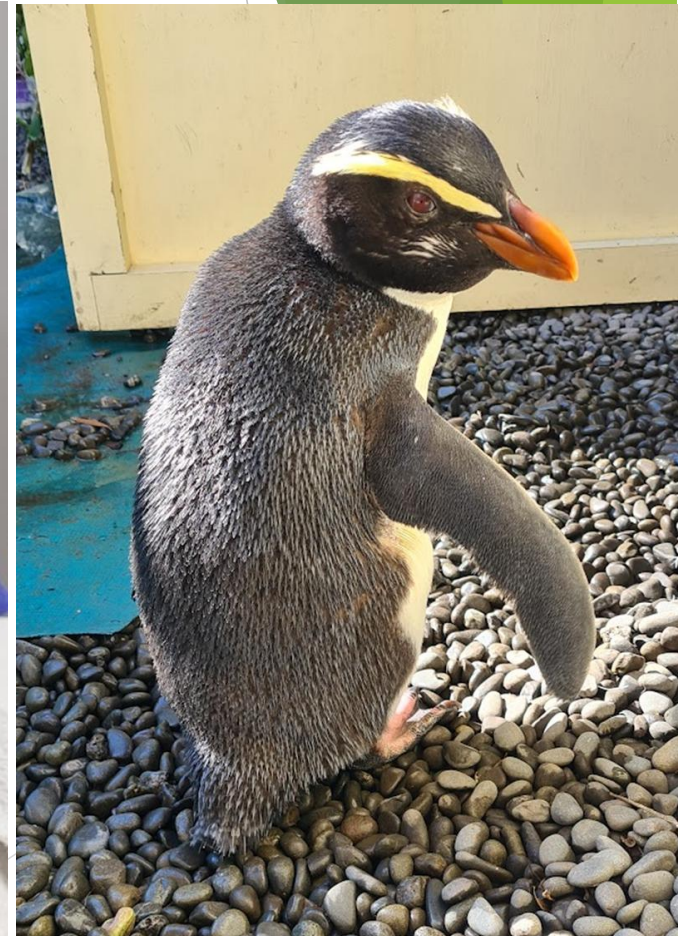
Most Frequent Circumstances of Admission





Critically & Nationally Endangered Species

Penguins



Raptors

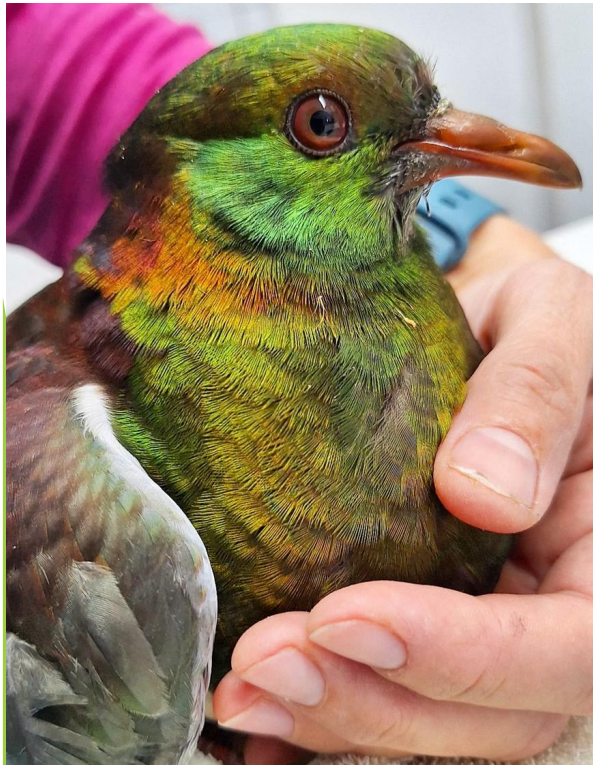


Seabirds

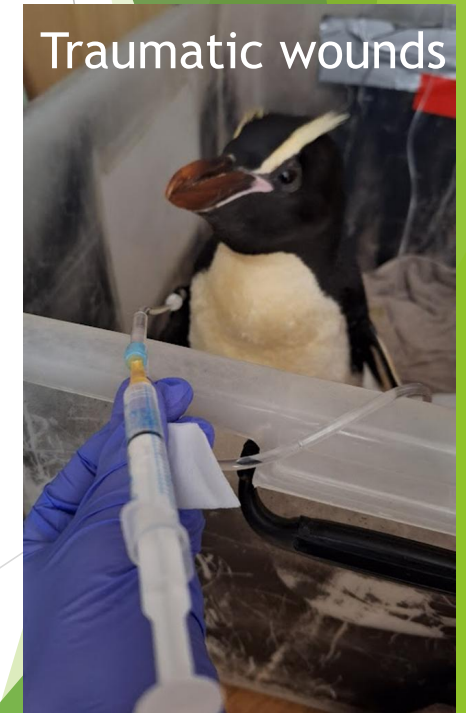




A variety of species
from around the
motu



Common Surgeries



The highlight and goal is always to return wildlife back into the wild healthy enough to breed and thrive



South Island
Wildlife
Hospital









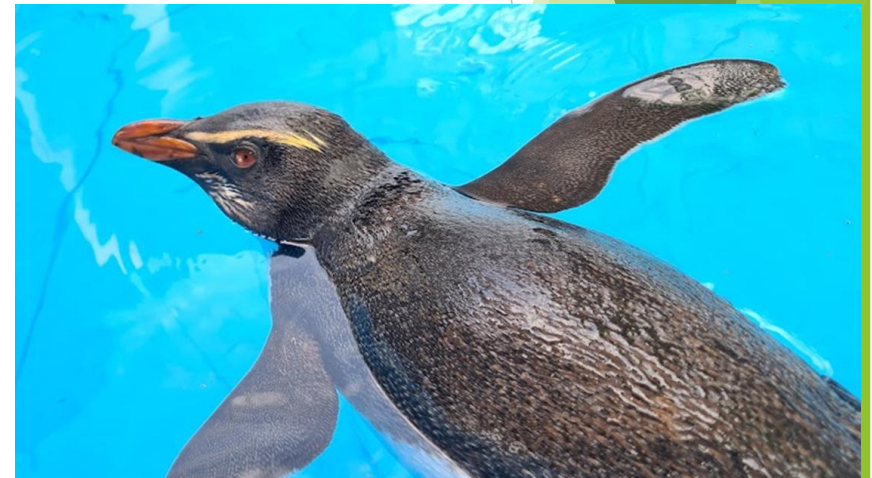
Our volunteers are vital for the hospital to function. They help with medical treatments and are trained in wildlife first aid, assist with cleaning, hospital hygiene, pool swimming the wildlife, education and outreach programs, collaborative partnerships, and by far love the most....the wildlife releases back to the wild



South Island
Wildlife
Hospital

Strengthening our cities environmental Identify...

- ▶ A new purpose-built hospital (eco hub) Including quarantine area
- ▶ Expand volunteer support
- ▶ Grow Education outreach
- ▶ For Ōtautahi -Healthy wildlife signals a healthy city- we are part of the city's environmental identity





South Island
**Wildlife
Hospital**

He pūmahara te tangata
Kia tika te noho o te whānau
Tuturu whakamaua kia tina, Tina!
Haumi e, Hui e, Taiki e























2025 MADE x Jolt 리더십 개발 워크숍

Professional Teaching Development

★ 줄트댄스 소개 ★

줄트댄스는 뉴질랜드 아오테아로아에서 출발해 2001년부터 지적장애 무용수들의 목소리를 춤으로 전해온 단체입니다. 지역 수업부터 전문 무용단 활동까지 연계된 프로그램으로 200여명의 무용수와 함께하고 있으며, 전문 강사 양성을 통해 현장 역량을 높이고 지속 가능한 교육 생태계를 넓혀가고 있습니다.



Lyn Cotton
린 코튼
줄트댄스 예술감독



Joel Forman
조엘 포먼
줄트댄스 무용수



Lachlan Oakes
라클런 오크스
줄트댄스 무용수



Rachel Tully
레이첼 툴리
줄트댄스 매니저

일정·Schedule

주제·Theme

2025 MADE x Jolt 창작워크숍

Creative Spirit

★ 줄트댄스 소개 ★

줄트댄스는 뉴질랜드 아오테아로아에서 출발해 2001년부터 지적장애 무용수들의 목소리를 춤으로 전해온 단체입니다. 지역 수업부터 전문 무용단 활동까지 연계된 프로그램으로 200여명의 무용수와 함께하고 있으며, 전문 강사 양성을 통해 현장 역량을 높이고 지속 가능한 교육 생태계를 넓혀가고 있습니다.



Lyn Cotton
린 코튼
줄트댄스 예술감독



Joel Forman
조엘 포먼
줄트댄스 무용수



Lachlan Oakes
라클런 오크스
줄트댄스 무용수



Rachel Tully
레이첼 툴리
줄트댄스 매니저

일정·Schedule

주제·Theme

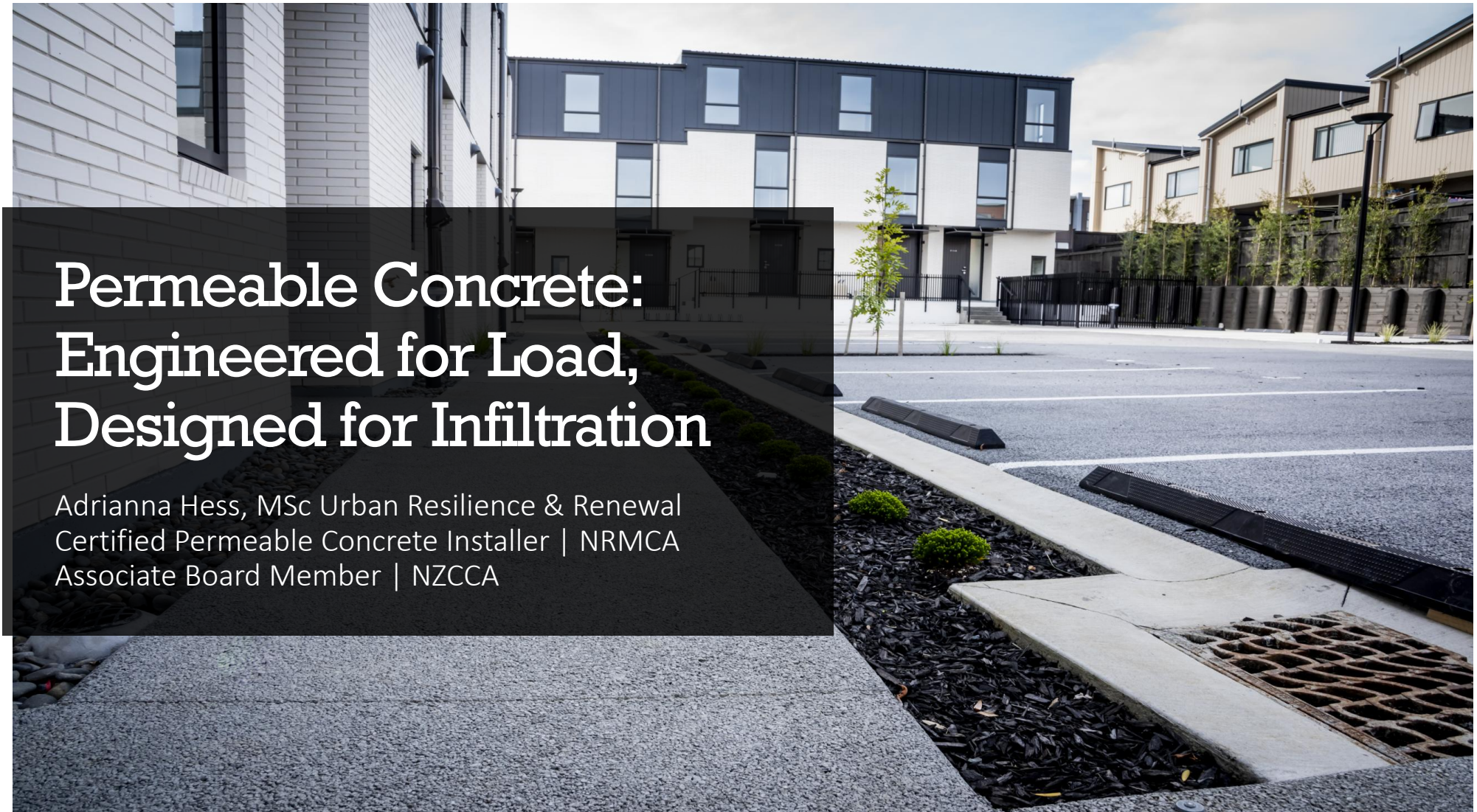
11. 3. MON

신체와 공간 인식
Body and Space Awareness



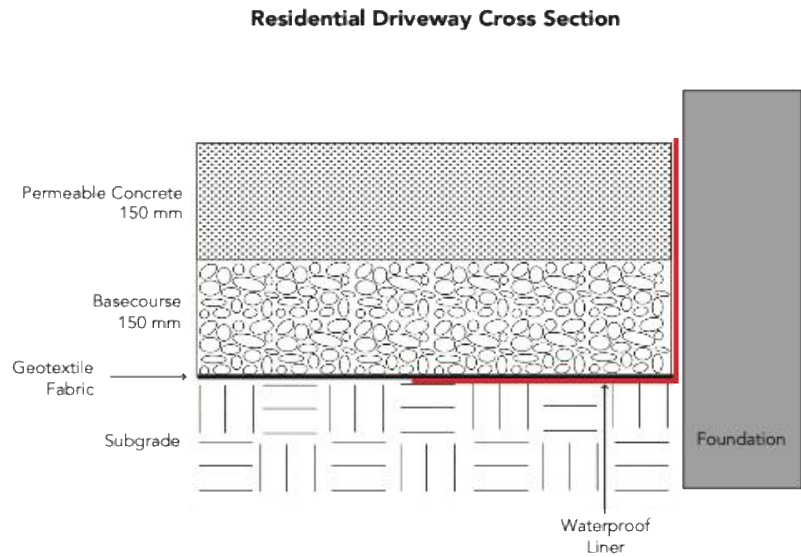
**Help us get to
Rarotonga**





Permeable Concrete: Engineered for Load, Designed for Infiltration

Adrianna Hess, MSc Urban Resilience & Renewal
Certified Permeable Concrete Installer | NRMCA
Associate Board Member | NZCCA



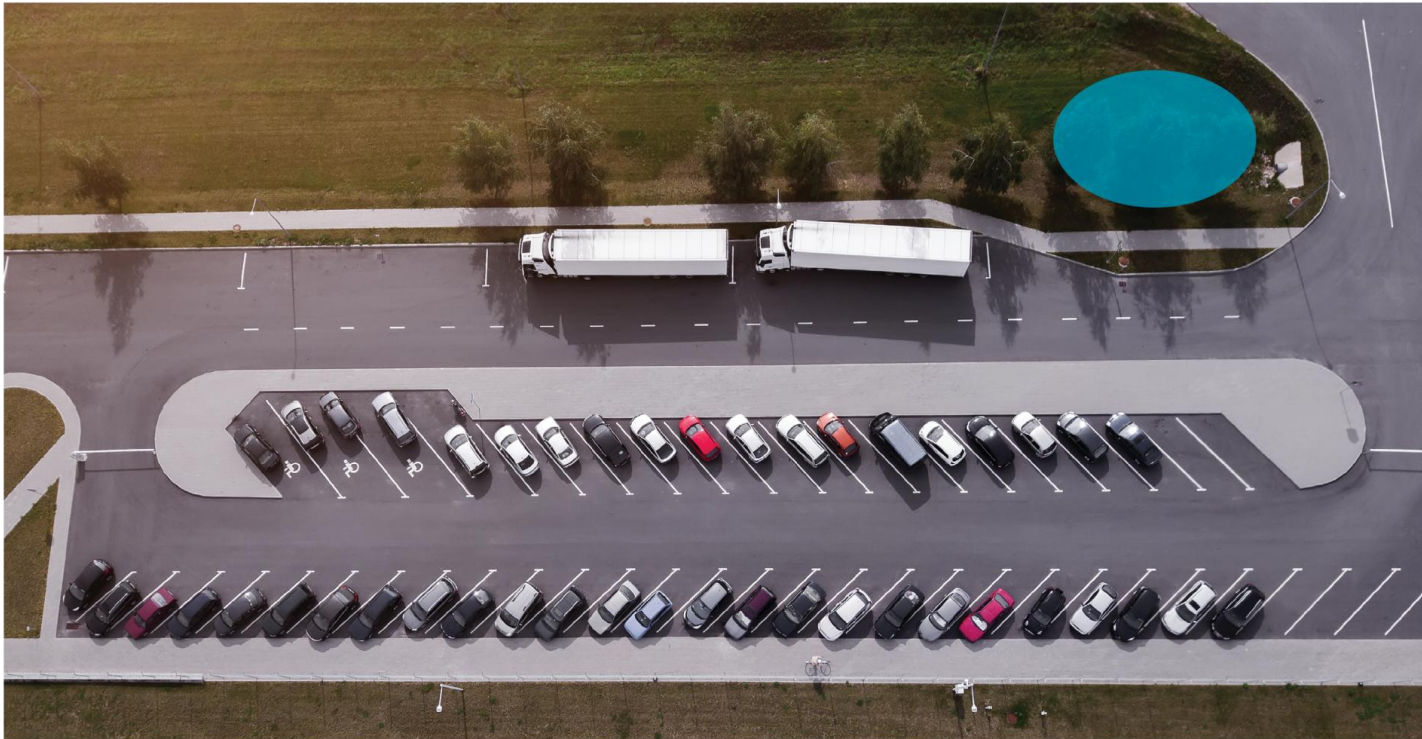
- Concrete 20% voids
- Basecourse 40% voids
- Every 11m² = 1m³ of static stormwater storage



The Infiltration Problem - Conventional Water Stacking



The Infiltration Problem - Conventional Water Stacking



Infiltration Problem - Conventional Water Stacking

- 10-year storm = 102mm rain in 24 hours
- Conveying 1000m² -> 100m²
- 102mm -> 1.02 meters
- Clay Soil Infiltration Rate: 3mm/hr
- 340 Hours ~ 14.2 Days



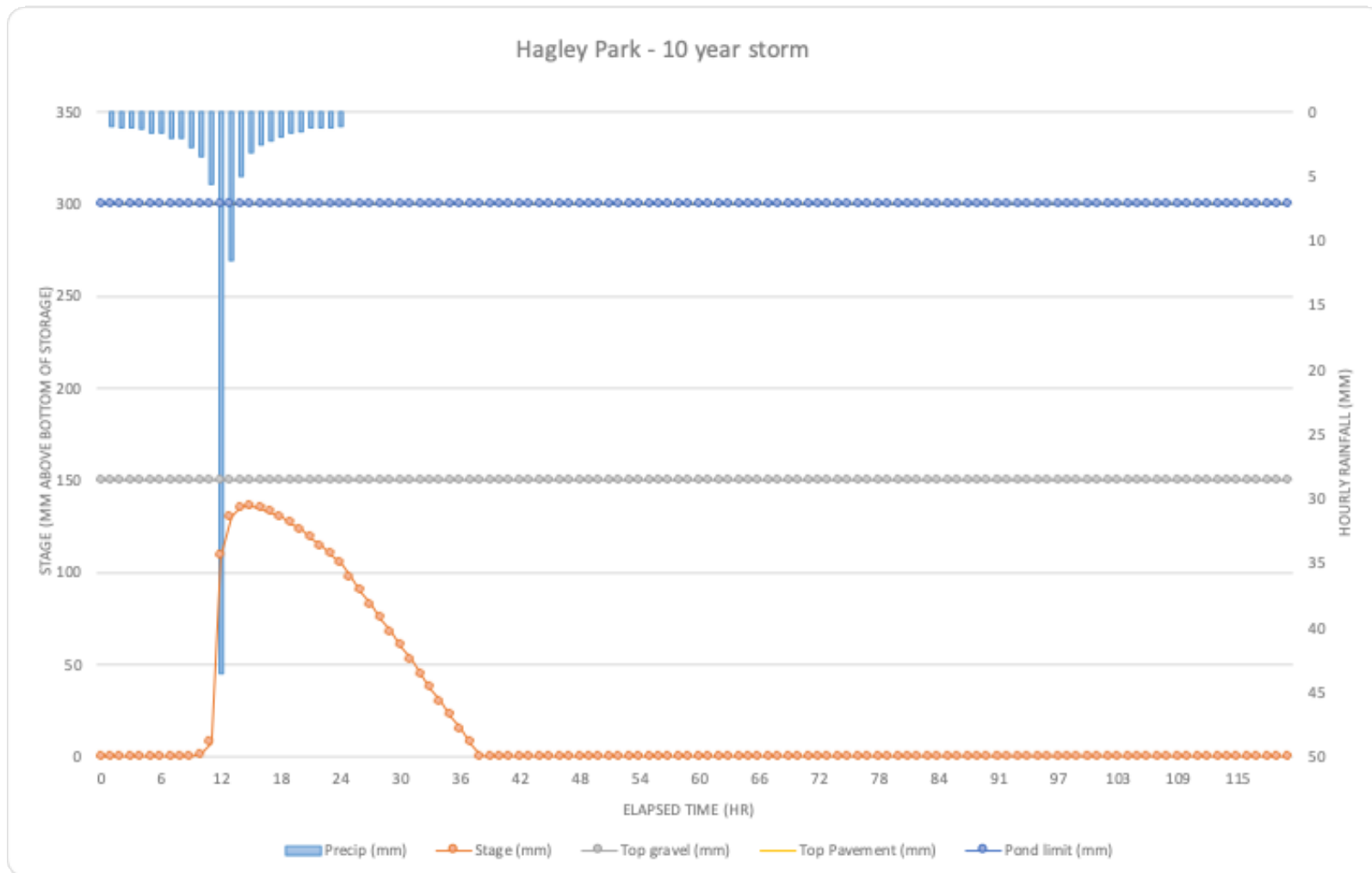
The Solution – Permeable Pavements



Solution – Permeable Concrete

- 10-year storm = 102mm rain in 24 hours
- 102mm total
- Clay Soil Infiltration Rate: 3mm/hr
- 34 Hours ~ 1.42 Days





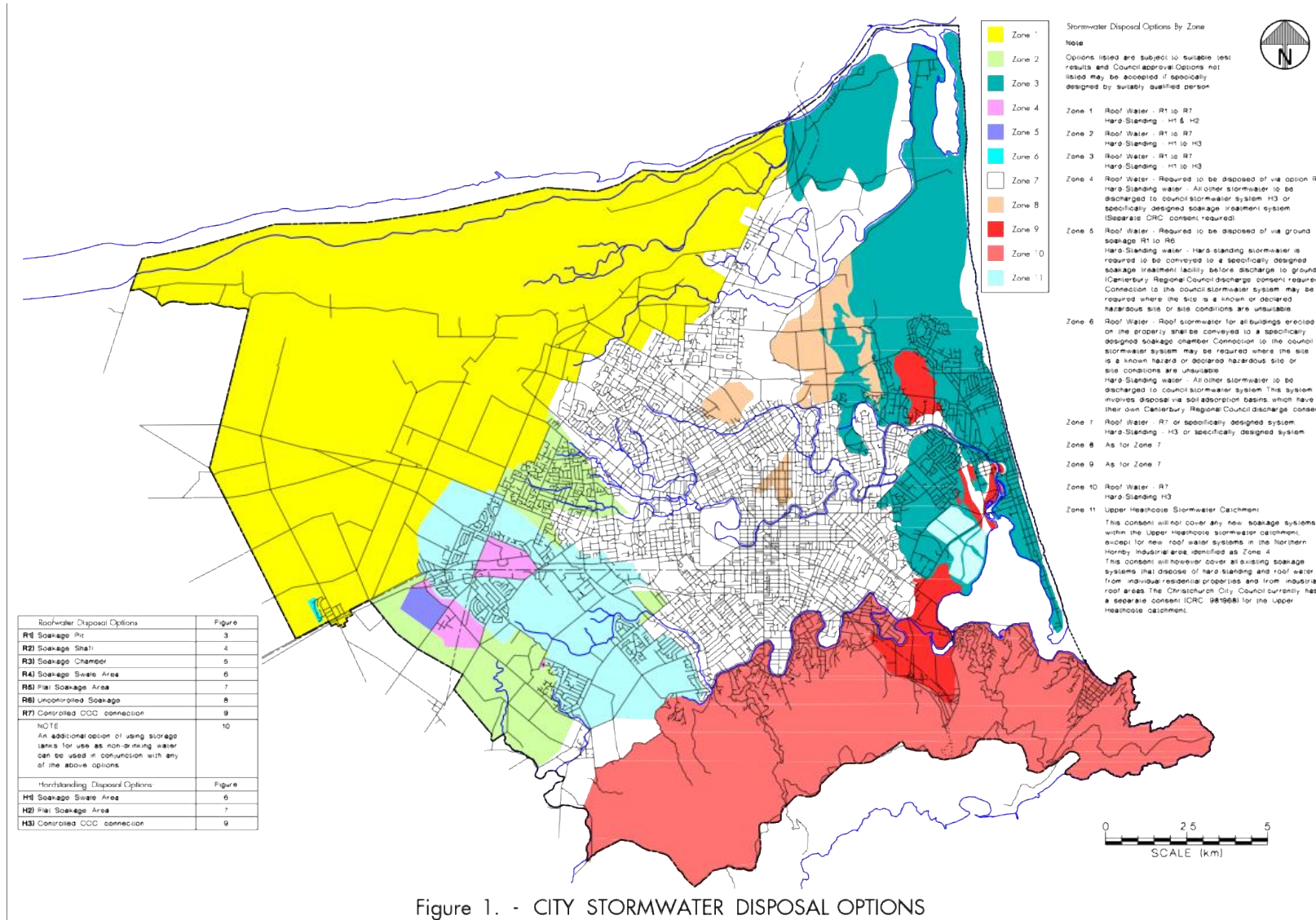


Figure 1. - CITY STORMWATER DISPOSAL OPTIONS

Link Stormwater Management & Development Planning



Concerns

- Saturated subgrade & high water table reduces infiltration
- System clogs over time
- Large storms may overwhelm system
- Over-compacted subgrade (over 95% where 88-92% standard proctor is ideal)
- Developers circumvent 70% site coverage



Solutions

- Adhere to current advice, 300mm between high water table and bottom of system
- System designed to clog to 95% (350mm/hr)
- Minimum 10-year storm capacity filters first flush pollutants before outflow
- Require subgrade compaction testing
- Reduces stormwater flooding & overloading of existing infrastructure



WHERE ARE WE TODAY?

- **The stench is largely gone.**
 - **We know why.**
 - **We know what caused it.**
- **We understand if it will come back and why.**

Proposal on the table – 3, and are they good?

- Diversion Pipe – no, write off.
- 95% or 99% Aeration – 16 units, \$12m – no.
- Addresses an issue (BOD in ponds 2a & 2b) , not the issue (H₂S in the water in ponds 3, 4 & 5).
- Far to expensive, doesn't meet the legal threshold of value.
- 140% expansion of aeration – overkill to not address root cause of stench.
- Far to long lead time.

The solution

- 6 additional aeration units across ponds 2a and 2b.
- 55% more headroom not 140%
- Support BOD issue, not go nuts.

- Test for and locate H₂S in the water (test kits \$600)
- Treat high levels of H₂S with FeCl₃ – (\$1,000 per IBC – expensive but fast)
- Manage H₂S levels in water with Fe (\$220/ton – slow but cheap – 2 to 3 weeks)

- Address high sludge levels with removal program – slow, expensive, long term requirement

Questions?

Don't Dump on the East: Stop the Ocean Outfall Bypass

To: Christchurch City Council

To the Christchurch City Council

We, the residents of Bromley, the surrounding East side neighborhoods, and the wider tautahi community, demand an immediate halt to the investigation into diverting partially treated wastewater through the ocean outfall.

Why this matters

The air quality from the Christchurch Wastewater Treatment Plant is actively worsening, and the reality of the situation is reflected in the current abatement notice. Instead of focusing all resources on an immediate, root-cause solution at the plant, the Council is investigating a "diversion" option that the community vehemently opposes. [1]

We are drawing a hard line:

No Ocean Dumping: We absolutely refuse to accept the dumping of partially treated wastewater into our ocean as a band-aid solution. It is unacceptable for our city and our environment.

Stop the Waste: Spending millions of dollars of public money just to investigate an option the community will never accept is entirely irresponsible.

Focus on the Fix: We demand that the Council stop this investigation immediately and redirect those millions of dollars toward actual, permanent solutions at the plant that do not involve sacrificing our marine environment.

Our Demand:

For CCC to permanently remove the ocean outfall diversion from the Pond Resilience Project options and halt all related spending and investigations immediately.

Why is this important?

Right now, our community is already enduring worsening air quality, and the Council is currently operating under an abatement notice for their ongoing failures at the plant.

Instead of focusing 100% of their resources on fixing the root cause of the odour, the Council is spending millions of ratepayer dollars to investigate dumping partially treated wastewater directly into our ocean outfall. This is being looked at as a "Diversion Option" under their Pond Resilience Project.

We need to stop this for three main reasons:

Trading One Crisis for Another: We cannot allow the Council to trade a devastating air quality crisis for a marine environmental disaster in Pegasus Bay. Pumping partially treated wastewater into our ocean is not a solution; it is a dangerous band-aid.

Wasting Millions of Dollars: It is completely irresponsible to spend millions of dollars just to investigate a backup plan that the community vehemently opposes. That money needs to be spent on actual, permanent fixes at the plant itself.

Enough is Enough for the East: The residents of Bromley and the surrounding areas have endured enough disruption and environmental stress. We are united in saying no to this outfall diversion, and we refuse to let this happen in our city.

We need to send a loud, undeniable message to the Council before they vote on the Pond Resilience Project on April 1st. Sign this petition to demand they take the ocean outfall investigation off the table permanently and focus entirely on fixing the plant.

References

Don't Dump on the East: Stop the Ocean Outfall Bypass

[1] Christchurch City Council, "CWTP Odour Proposed Pond By-pass" briefing document, outlining the proposed secondary treatment bypass (Page 1). Available at:
<https://drive.google.com/file/d/1mydPWu6wWuGTF9NwmzmSj3EdTrIFQxOm/view?usp=drivesdk>

Don't Dump on the East: Stop the Ocean Outfall Bypass

Signed by 121 people:

Name	Postcode	Physical address	I consent to my email being shared with the Christchurch City Council
Rebecca Robin	8023		
Gwenn Meadows	8023	[REDACTED]	x
Ethan Gullery	8011	[REDACTED]	x
Rebecca Swain-Robin	8023		x
Leo He	8011		x
Allan Taunt	8051		x
Elyana Shukri	8971	[REDACTED]	x
Jane Dunn	8022		
Katie Croat	8081		x
Connor McKinnon	8011		
Maree Greaves	8013	[REDACTED]	x
Quentin Bourne	8062	[REDACTED]	
Jillian Weston	8061	[REDACTED]	
Joan Wilson	8013	[REDACTED]	
Kalah Blair	8061	[REDACTED]	x
Ann Matheson	8083	[REDACTED]	x
Marilyn Dwight	8083	[REDACTED]	
Julia McLean	7410	[REDACTED]	
Holly Catton	8062	[REDACTED]	x
Michael Fitzgerald	8014	[REDACTED]	
Alma De Anda	8025		
Teresa Butler	8013	[REDACTED]	x
AARON MINSON	8062	[REDACTED]	x
Hora Nicholas	8042	[REDACTED]	
Leanne Baird	8024	[REDACTED]	x

Don't Dump on the East: Stop the Ocean Outfall Bypass

Name	Postcode	Physical address	I consent to my email being shared with the Christchurch City Council
Melva Gill	8062	[REDACTED]	x
Megan Colmore	8062	[REDACTED]	
Katrina Lajunen	8062	[REDACTED]	x
Kev SIBBALD	8083	[REDACTED]	
Fiona Garrett	8062	[REDACTED]	x
Ellen Hoy	8062	[REDACTED]	
Toni Minson	8062	[REDACTED]	x
Nigel Vine	8062	[REDACTED]	x
Áine Kelly-Costello	0626	[REDACTED]	
Manuel Mania	8061	[REDACTED]	x
Mark Harvey	0604	[REDACTED]	
Julie Bolt	8062	[REDACTED]	x
Aroha Young	7500	[REDACTED]	x
Lorraine Wiersma	8016	[REDACTED]	x
Greg davis	8062	[REDACTED]	
Chay Froggatt	8062	[REDACTED]	x
Daniel Starky	8041	[REDACTED]	x
Deb Brown	8061	[REDACTED]	x
Rosemary Neave	8081	[REDACTED]	
Bernice Swain	8023	[REDACTED]	x
Rachel Stansbury	8053	[REDACTED]	
Sharon Lewis	8083	[REDACTED]	
Christine Williams	8023	[REDACTED]	x
Tanya Didham	8061	[REDACTED]	x
Chris Harms	8062	[REDACTED]	x
Paul Corliss	8081	[REDACTED]	x
Anne-Marie Wylie	0000	[REDACTED]	x

Don't Dump on the East: Stop the Ocean Outfall Bypass

Name	Postcode	Physical address	I consent to my email being shared with the Christchurch City Council
Felix Swain	8062		x
Lorraine Edelston	8067		x
Tiffany Staines	2260		x
Fay Brorens	8061		x
Nelleke Passchier	8062		
Denise Ford	8062		x
Nikki Berry	8083		x
Rafi Bullet	8083		
Matthew Beechey	8051		
Christine Gordon	8062		x
Carol Vernal	0192		
Jessica Fraemohs	8013		
Brenda Benge	8061		
Renate Galetzka	8062		x
Jessica Thompson	8062		
Jocelyn Fraemohs	8053		x
Katia De Lu	8042		x
Melody Baird	8042		x
Rachel Gaffikin	8022		x
Tracy Anderson	8022		
Nadia Moffat	8062		x
Melanie Foote	8022		x
Eve Strecker	8023		x
Marik Kardel	8024		x
Lisa Jonathan	8025		x
Peter Thompson	8062		
Hayley Mahanga	8062		
Greig McCann	8062		x
Rebecca Mckenzie	8024		x

Don't Dump on the East: Stop the Ocean Outfall Bypass

Name	Postcode	Physical address	I consent to my email being shared with the Christchurch City Council
kylie solomon	8051	[REDACTED]	x
Gerard Sutton	8062	[REDACTED]	x
Barbara Savage	8061	[REDACTED]	x
Brian Minson	8062	[REDACTED]	
Sylvie Oliver	CHRIST CHURCH	[REDACTED]	
Elizabeth Elizabeth	8061	[REDACTED]	x
Kathy Simmons	8061	[REDACTED]	
Andre Thomas	7004	[REDACTED]	x
Gabby Stewart	8042	[REDACTED]	
Jennie Swain-Nicholls	8061	[REDACTED]	x
David Nicholls Crozier	8061	[REDACTED]	
Aashok F&C Advisory	781025	[REDACTED]	
Lydia Sharp	8022	[REDACTED]	
Amy Berteis	8062	[REDACTED]	x
Jasmine Macgregor	8062	[REDACTED]	
Tamsin Harrington	8083	[REDACTED]	x
Emma Rodriguez Dos Santos6	8061	[REDACTED]	x
Dave Mitchell	8024	[REDACTED]	
federico Rodriguez Mendoza	8053	[REDACTED]	
Wendy Baird	7910	[REDACTED]	
Ann Vanschevens teen	8023	[REDACTED]	x
Atmavidya Schon	8062	[REDACTED]	x
Margie McDiarmid	8011	[REDACTED]	

Don't Dump on the East: Stop the Ocean Outfall Bypass

Name	Postcode	Physical address	I consent to my email being shared with the Christchurch City Council
Cris Ardouin	8083	[REDACTED]	
Wikitoria Kurene	8061		x
Emma Smith	8083	[REDACTED]	x
Isabella Sixtus	8023	[REDACTED]	
Sarah Eynon	8013		
Gillian Langman-Croucher	8083	[REDACTED]	
Sally Aitchison	8083	[REDACTED]	x
Cyril Hector	8013	[REDACTED]	x
Nicola Browne	8061	[REDACTED]	x
Annette Bolton	8062	[REDACTED]	
Zoe Sixtus	8023	[REDACTED]	
Shae Hooper	0000	[REDACTED]	x
Heav Kar	8083	[REDACTED]	
Al Park	8082	[REDACTED]	
Joy Rogers	8061	[REDACTED]	x
Raymon Robin	8023	[REDACTED]	
Robin Robin	8023	[REDACTED]	

Council Workshop NOTES

Date: Wednesday 1 April 2026
Time: 2.55 pm
Venue: Camellia Chambers, Civic Offices,
53 Hereford Street, Christchurch

Present

Chairperson	Mayor Phil Mauer
Deputy Chairperson	Deputy Mayor Victoria Henstock
Members	Councillor Kelly Barber
	Councillor David Cartwright
	Councillor Melanie Coker
	Councillor Pauline Cotter
	Councillor Celeste Donovan
	Councillor Tyrone Fields
	Councillor Nathaniel Herz Jardine
	Councillor Yani Johanson
	Councillor Aaron Keown
	Councillor Sam MacDonald
	Councillor Jake McLellan
	Councillor Andrei Moore
	Councillor Mark Peters
	Councillor Tim Scandrett

Principal Advisor

Mary Richardson
Chief Executive
Tel: 941 8999
mary.richardson@ccc.govt.nz

Meeting Advisor

Katie Matheis
Senior Democratic Services Advisor
Tel: 941 5643
katie.matheis@ccc.govt.nz
Website: www.ccc.govt.nz

Note: This forum has no decision-making powers and is purely for information sharing.

To find upcoming meetings, watch a recording after the meeting date, or view copies of meeting Agendas and Notes, go to:

<https://www.ccc.govt.nz/the-council/meetings-agendas-and-minutes/>



Councillor Donovan left the Workshop at 3.30 pm and did not return.

9. Christchurch Wastewater Treatment Plant Pond Odour Mitigation

Secretarial Note: The Council meeting adjourned at 2.45 pm and was followed by a Workshop on Item 9. Due to technical issues, the recording of this Workshop is unavailable.

Council Officers Gavin Hutchinson, Adam Twose, and Kylie Hills joined the table to present this Item and answer questions from elected members.

Key presentation points:

- Background information was provided regarding what has necessitated this work, e.g., to address future pond odour, abatement notice, timing of completion of the new Plant, etc.
- The report's options to address the pond odour were reviewed, including the cost-effectiveness and assessment criteria of aeration vs. diversion.
- Additional information was shared regarding a biochemical additive being trialled by staff on a small scale as another way of addressing the odour.
 - Staff outlined the current risks of using the additive and recommended that this not be progressed as an option at this time. Trials would continue with staff reporting back in the future.
- The meaning of "95%" and "99%" of days discussed in the report were further clarified.

Key discussion points:

- Clarification on how these options progressed to the Council for consideration and whether there was a delay in pursuing the option of installing aerators.
- Clarification on the lifespan of the aerators and whether the amount of time they were operating would be dictated, in part, by the option progressed – 95% or 99% aeration.
 - Staff noted the aerators would still have use after the new plant was completed and there would be further update works on the current wastewater treatment plant.
- The discharge of the biochemical additive to the ocean – one of the risks noted and why this was not being progressed as an option at this time.
- The aerators have not yet been ordered, but were on hold and available in Wānaka.
- The expected timeline before the aerators would be operational if that option was progressed and how they would be powered.
- Hydrogen sulfide levels and whether/how the options presented may impact those levels.

The Workshop concluded at 3.56 pm.

CWTP Pond Odour Mitigation Options

Aeration or diversion?

Gavin Hutchison, Head Three Waters

Why is this work required?

- Mitigate future pond odour caused by high BOD
- Now over 4 years of sending higher than previous organic load to the ponds
- Still 2 years before new Activated Sludge Plant (ASP) is commissioned
- Abatement Notice
- Critical Maintenance requirements
- Planned treatment interruptions – Activated Sludge Plant Construction

Options Assessed in Report

Issue: A pond odour problem that Council needs to fix now.

Options:

- Increased aeration (2 options – 95% and 99% effective)
- Constant diversion (2 options – 95% and 99% effective)
- Both increased aeration and diversion (2 options – occasional and constant diversion)

Not in Report – Biochemical Additive

What is being proposed?

- Introduction of a biochemical additive to reduce odour from oxidation ponds by changing the bacteria population
- Sourced from South Africa

Other alternatives

- Council received a large number of proposals to mitigate odours
- Council undertook trials last year on a number of additives – none were successful



Not in Report – Biochemical Additive

- Consent compliance risks
- Process performance risks
- No track record on municipal plants outside of Africa or plants of scale
- It needs time-consuming trial
- Supply chain uncertainties
- We are not in a suitable place to undertake large scale trials
- Does not solve the problem now
- Expected to still require mechanical mixing

Based on the above staff are not recommending this option. However staff will conduct trials and report back.

Meaning of aeration and diversion (report 4.7-4.9)

Aeration: air mixed into the ponds by mechanical aerators. No change to outfall.

Diversion: some of the partially treated wastewater that has been through the Treatment Plant does not go into the ponds. It gets piped around the ponds and then combined with the fully treated wastewater in the outfall pump station. It gets discharged in the existing 3km outfall.

Either aeration or diversion improves the resilience of the ponds, being they can accept higher organic loading without causing odours

Most cost-effective (Report 4.25 – 4.29)

New legal test in the Local Government (Water Services) Act 2025 – when selecting a wastewater service option Council must chose the most cost-effective

That does not mean cheapest – The term “cost-effective” requires an assessment of the value obtained for the cost, over the life of infrastructure. Value for each project can include social, cultural and environmental attributes.

Council decides what all its objectives are (including those in the Act) and what weight to put on various objectives and chooses the most cost-effective in achieving those

Criteria for assessing the aeration and diversion options

How effective: days that high BOD could create odour issues?

Discharge: days per year of ocean outfall of diverted partially treated wastewater

Ecological impact

Cost: capex and opex

Complexity in construction and in operation

Time to implement

Consenting ease

Mana whenua views

Overall test: is it the most cost-effective option in achieving those objectives?

Meaning of the “95%” and “99%” of days (Report 4.15)

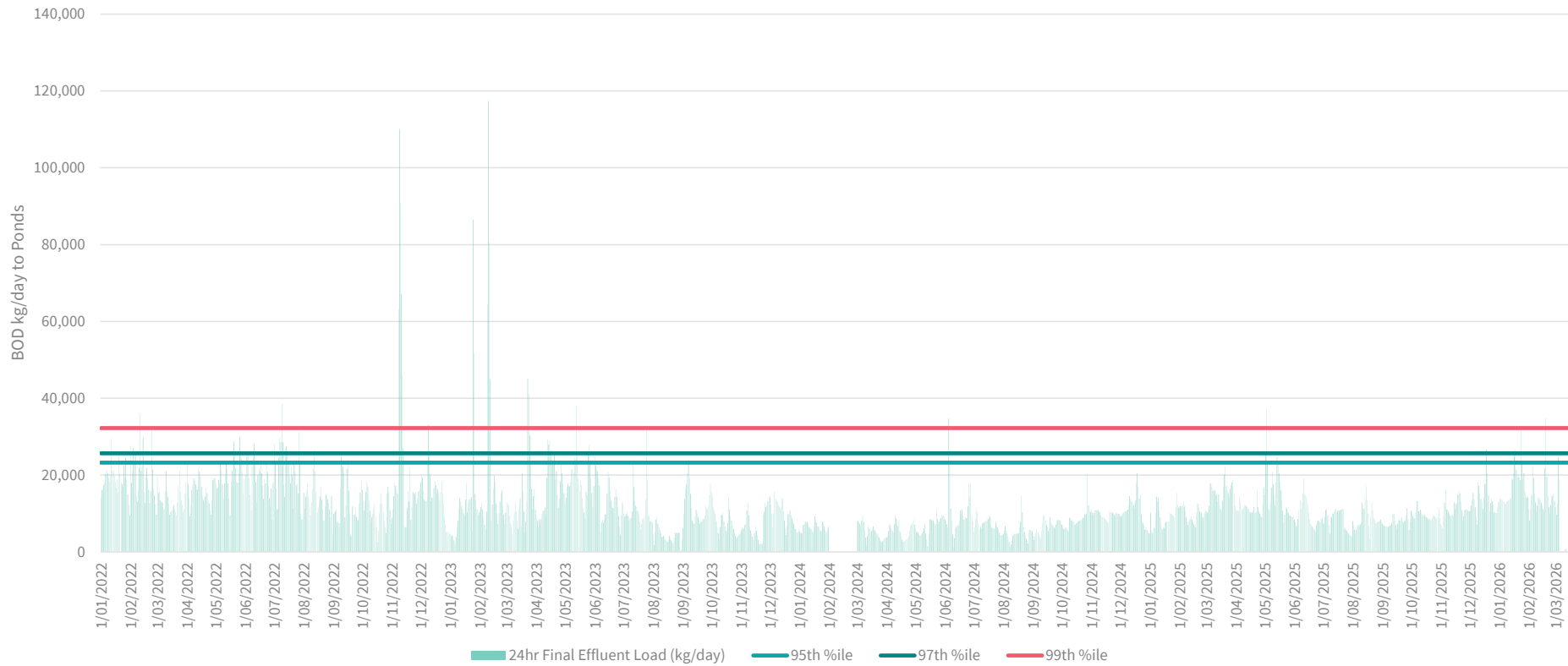
Days per annum that BOD might still potentially cause offensive and objectionable odour: Officers modelled the extent to which the option would have treated BOD in the ponds to acceptable levels using flow and BOD data from the last three years.

The modelling excluded:

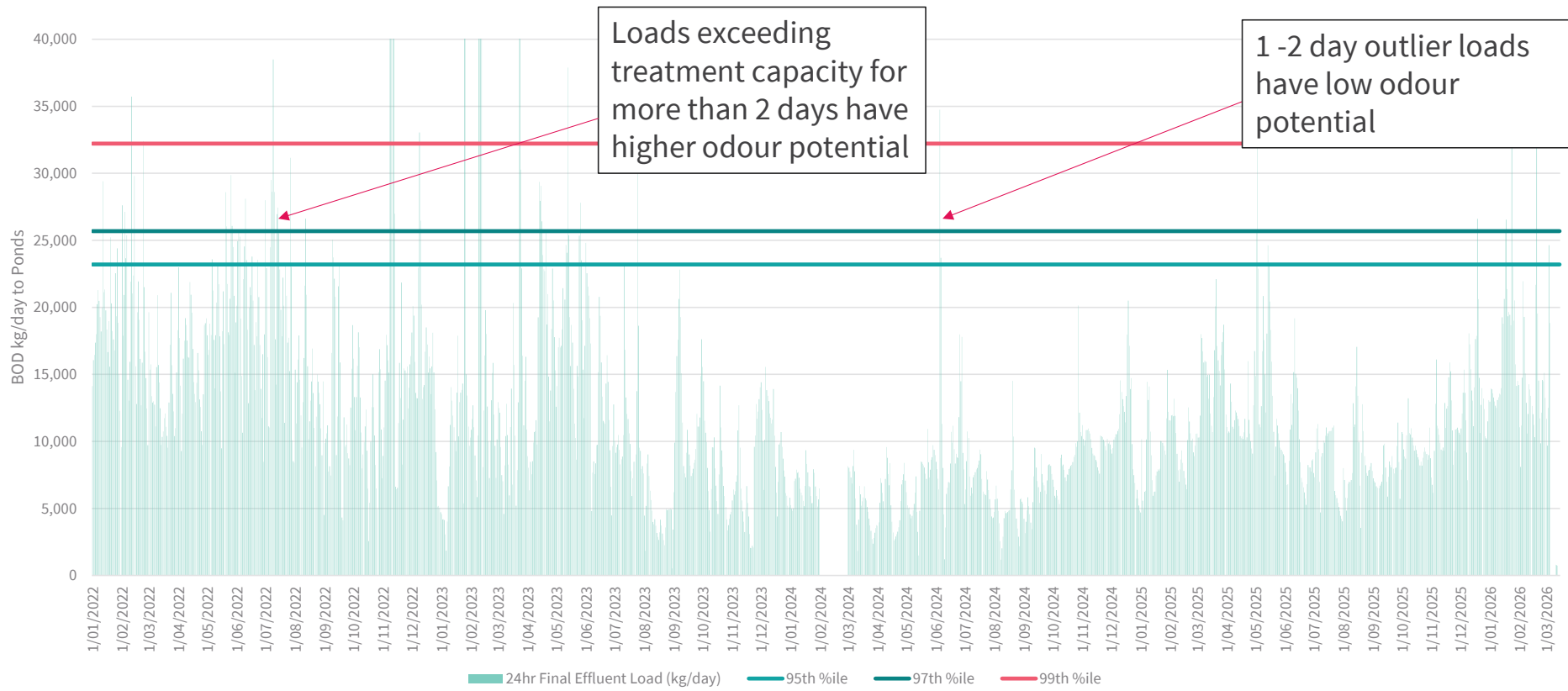
(i) A period in February 2024 in which the cause has now been separately fixed; and

(ii) Periods of 1-2 days of high BOD because it is likely that aeration will improve pond health to the extent that high BOD for 1-2 days is unlikely to cause offensive and objectionable odour.

Meaning of the “95%” and “99%” of days (Report 4.15)



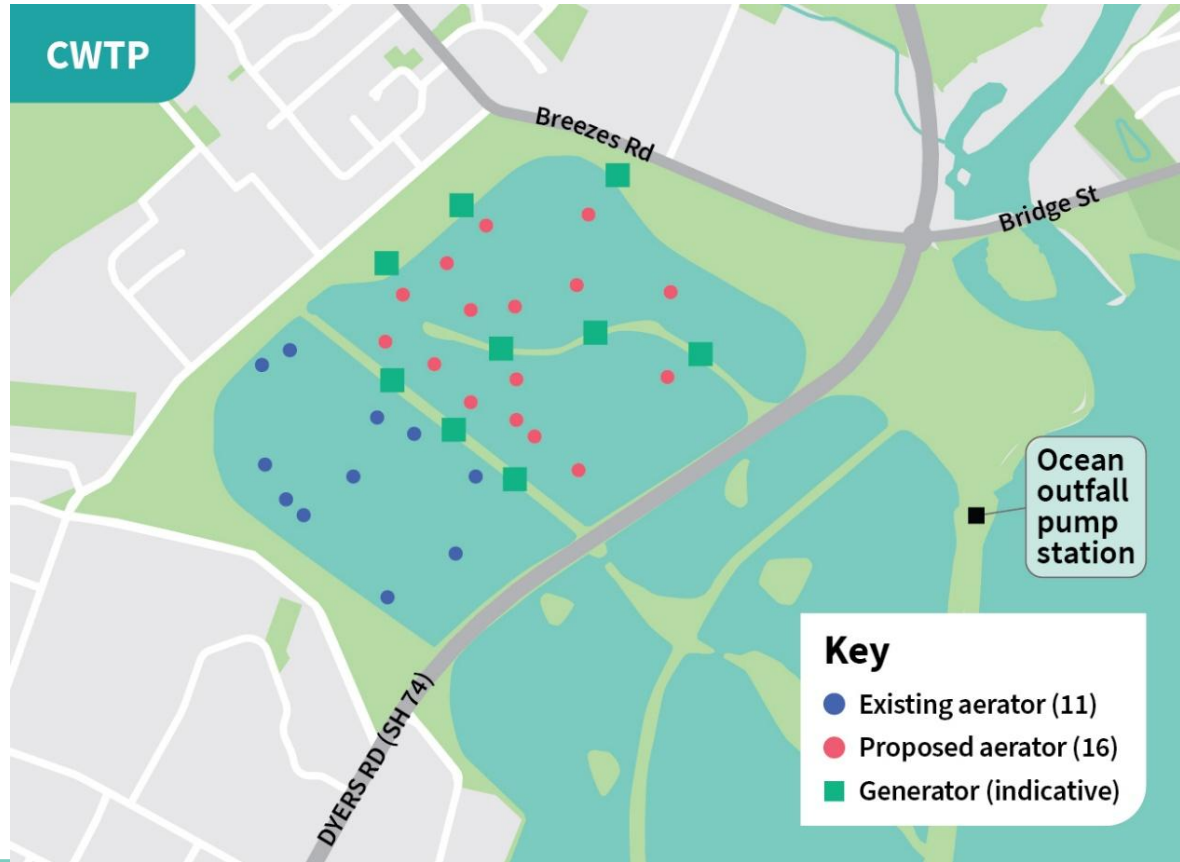
Meaning of the “95%” and “99%” of days (Report 4.15)



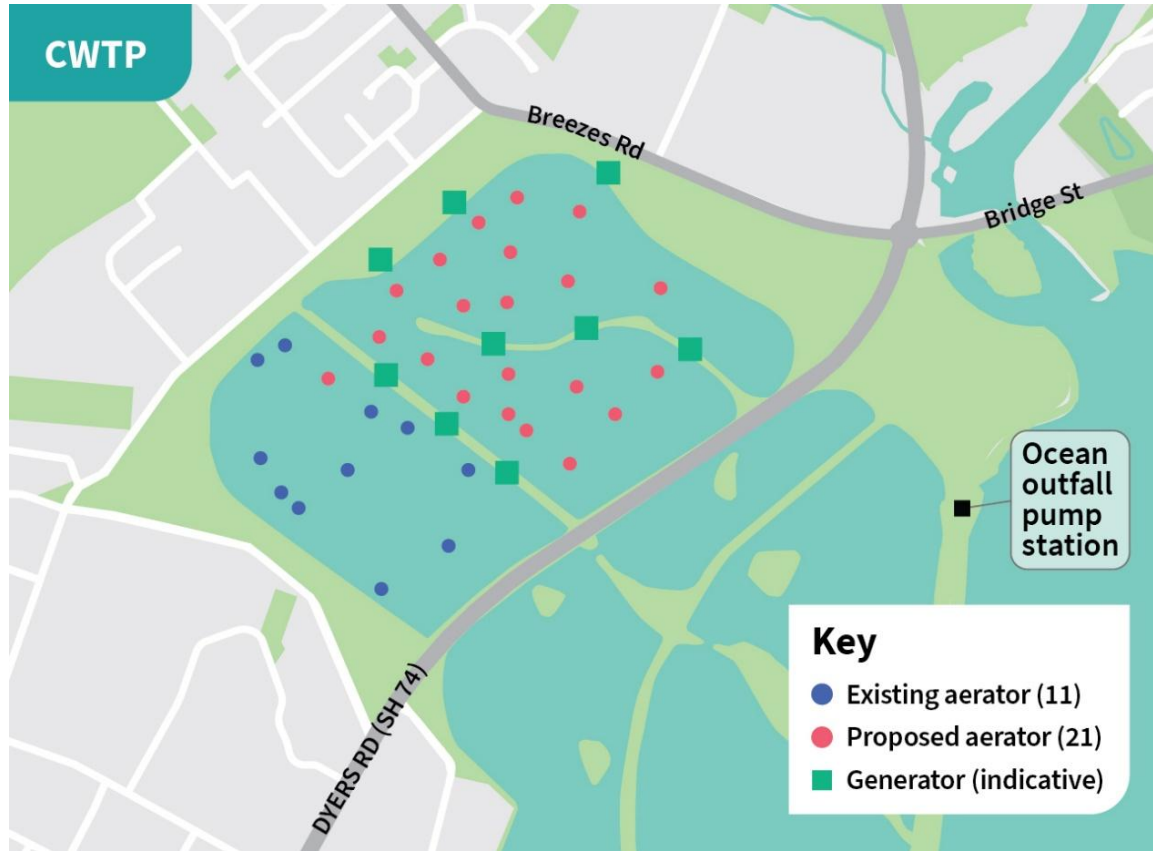
Background: Current Aeration plus 3km outfall



Option 1: 95% Aeration and no change to outfall



Option 2: 99% Aeration and no change to outfall

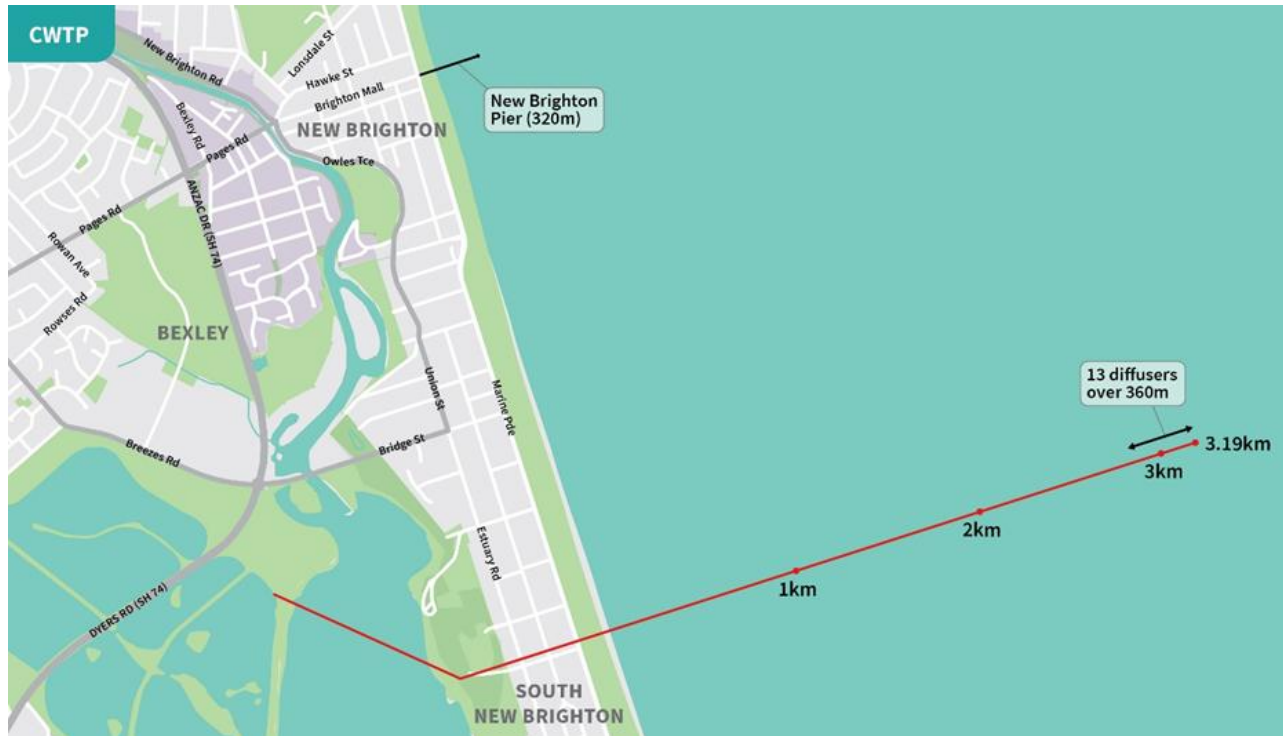


Option 3 & 4: Pond Diversion and current aeration



- Operation 365 days per annum
- Option 3 Flow rate 1400 l/s
- Option 4 Flow rate 1900 l/s

Option 3 & 4 (cont.)



- Operation 365 days per annum
- Option 3 Flow rate 1400 l/s
- Option 4 Flow rate 1900 l/s

Option 5 and 6: Aeration plus diversion



Both: flow rate 400 L/sec

Option 5: discharge 18 – 60 days per annum

Option 6: constant discharge

Options Assessment

	1. Aeration 95 th %	2. Aeration 99 th %	3. Diversion 95 th %	4. Diversion 99 th %	5. Aeration 95 th % plus Diversion 400 L/s occasionally when needed	6. Aeration 95 th % plus Diversion 400 L/s constantly
Quantity of partially treated wastewater being diverted around the ponds	0%	0%	64% (1400L/sec)	86% (1900 L/sec)	18% (400 L/sec)	18% (400 L/sec)
Days pa that BOD might still potentially cause offensive and objectionable odour	3	0	12	1	0	0
Days pa that there will be discharge of partially treated wastewater in the ocean outfall	0	0	243	243	18 (min), 60 more likely – to avoid the risk of turning the diversion on too late	365
Effect on ocean ecology	None	None	Unknown	Unknown	Unknown	Unknown
Cost 3 years:						
- Capital	\$4.8m	\$7.1m	\$6.3m	\$8.4m	\$7.5m	\$8.5m
- Operational	\$1.9m	\$2.7m	\$6.8m	\$7.5m	\$3.1m	\$6.0m
- Contingency	\$1.0m	\$1.5m	\$2.0m	\$2.4m	\$1.6m	\$2.2m
Total	\$7.7m	\$11.2m	\$15.1m	\$18.3m	\$12.2m	\$16.6m
Construction complexity	Low	Low	Medium	Medium	Medium	Medium
Time to implement if using generators	6-10 weeks	6-10 weeks	N/A	N/A	10 weeks	10 weeks
Time to implement if using permanent network power supply	16 weeks	16 weeks	18 weeks	20 weeks	16 weeks	16 weeks
Generator Power Supply Required	6 - 10 weeks	6 - 10 weeks	N/A	N/A	6 -10 weeks	6 - 10 weeks
Operational complexity and risk of performance failure	Low	Low	High	Very High	High	High
RMA consent requirements	Possibly for temporary diesel generators	Possibly for temporary diesel generators	New consent needed for discharge	New consent needed for discharge	New consent needed for discharge and possibly diesel generators	New consent needed for discharge and possibly diesel generators
Mana whenua views	Supported	Supported				
Assessed under the Local Government Water Services Act objectives including cost-effectiveness	More cost-effective than 99 th percentile aeration?	Less cost-effective than 95 th percentile aeration?	Less cost-effective than aeration alone	Less cost-effective than aeration alone	Less cost-effective than aeration alone	Less cost-effective than aeration alone

Officer view in Report:

Aeration alone is preferred

- Either option 1 for 95% (3 days) or option 2 99% (0 days). They are cost-effective
- The choice of these two options is finely balanced
- It is for Council to decide whether the possibly reduction in odour risk warrants the increased cost

Option 5 Increased aeration plus occasional diversion

- **Not preferred, not the most cost-effective** (report para 4.13)
- Doesn't avoid the discharge to ocean
- It is harder to implement and is more complex to operate, leading to greater risk of failure

Options 3, 4 and 6 Continuous diversion

- **Not cost-effective** (report para 4.11.3)
- Costs significantly more than aeration alone
- Takes longer to implement, has increased construction and operational complexity
- Might have adverse ecological effects in the ocean
- Has additional consenting requirements

Open for questions

