

**Te Pātaka o Rākaihautū**  
**Banks Peninsula Community Board**  
**MINUTES ATTACHMENTS**

---

**Date:** Monday 13 April 2026  
**Time:** 10 am  
**Venue:** Lyttelton Ōhinehau Community Boardroom,  
25 Canterbury Street, Lyttelton

---

| <b>TABLE OF CONTENTS NGĀ IHIRANGI</b>  | <b>PAGE</b> |
|--|-------------|
| <b>4.1. Public Forum - Lyttelton Reserves School Programme</b>   |             |
| A. Item 4.1 Public Forum Lyttelton Reserves School Education Programme – Te Pātaka o Rākaihautū Banks Peninsula Community Board – 13 April 2026.....         | 3           |
| <b>5.1. Deputations by Appointment - Te Ra Community Park – Community Garden Application</b>   |             |
| A. Item 5.1 – Deputation Te Ra Community Park Mr Murray Campbell Presentation – Te Pātaka o Rākaihautū Banks Peninsula Community Board – 13 April 2026 ..... | 10          |
| <b>5.2. Deputations by Appointment - Te Ra Community Park Community Garden Application</b>   |             |
| A. Item 5.2 – Deputation Te Ra Community Park Ms Dawn Sutton Presentation – Te Pātaka o Rākaihautū Banks Peninsula Community Board – 13 April 2026.....      | 13          |

---



# Ngā Kaitiaki o Urumau

## *The Guardians of Urumau*



- 20 years teaching experience
- Environmental Science/ outdoor educator
- Winner of Prime Minister's Science Prize
- Lead Teacher B5 Butterfly Project
- Member of Lyttelton Reserve Committee
- Live in Whakaraupo/ Lyttelton
- Children go to Lyttelton School

# Bianca Woyak



Page 2

- Connects tamariki directly to their place/ sense of ownership.
- Taking action for the future/ feeling climate hope.
- Understanding how they can be active citizens in their community.
- Upskilling kaiako and giving them confidence in local enviro education.
- Connecting kura with local agencies.



## Why NKU Matters?

### Term 1

**In class:** Urumau Past Present Future

What is a reserve?

**Field Trip:** Our Lyttelton School Site

Planting of 100 trees.

### T2

**In class:** Importance of Native Trees

Native Tree identification

**Field Trip:** ID of native trees

Maintenance of LPS site.

### T3

**In class:** Importance of Biodiversity

Pine Trees: Problem or Resource?

**Field Trip:** Bioblitz and Butterfly Survey

### T4

**In class:** Taking Action

**Field Trip:** Planting at LPS site and taking chosen action.

## Program Structure



Page 4



“So far we have more male than female copper butterflies, I wonder why this is?”



“What should I name my plant? Maybe Jeffery.”



“I want to plant one of each type of tree to get the collection!”



“This is a girl butterfly as she has a big abdomen and purple on the sides of her wings.”

## Tamariki Comments



“I think this is a karamu because of the shape of the leaves.”



“All the lancewoods are dead. Next time let's not plant these.”



“All the girl butterflies we will give a name starting with A. This is Alice.”

# Tamariki Comments

- Lyttelton Port Company
- Christchurch City Council
- Conservation Volunteers
- Lyttelton Reserve Committee
- Lyttelton Primary School
- B5 Butterfly Project
- Rob from Revival



# Thank you!

## Te Ra Park Development

### **Why the raised garden beds will provide a future for the Park**

1. Food Security by training local residents with the skills to grow edible plants
2. Raised garden beds reduce the risk of back injuries associated with full bending to weed and mulch
3. The gardens will not be productive if the gum tree along the boundary remains in situ
4. This tree was planted after the neighbouring property owner settled in his house and it has grown to such a size that it is a significant safety hazard in storms and high winds. It prevents insolation of the area where the gardens will be established

# Mitigating Safety Hazards

5. Friends of Te Ra (FOTR) applied for dissolution because members will not take up roles on the committee due to the responsibilities of being liable for ensuring safety to residents and visitors.
6. FOTR is unable to continue to insure against injury to Park visitors and residents going forward in the event of the branches falling off trees. The amount of insurance required to cover such damage is beyond the resources of volunteers.
7. The resident's daughter no longer sleeps in the bedroom adjacent to the tree for fear that parts of it will smash through the window

## The Gardens are consistent with Council Policy

8. The Council adopted a food resilience Policy in 2014
9. I laud the outcomes of that policy to develop a self-reliant and close-knit community, a thriving food economy food economy consistent with our garden city heritage
10. The water infrastructure that keeps the native plantings healthy is already in place thanks to FOTR
11. Approval of the raised gardens provides the Community with the opportunity to restore FOTR



**COMMUNITY  
GARDEN  
PROPOSAL FOR  
TE RA  
COMMUNITY  
PARK**



## Te Rā Community Garden Proposal

- Community-led
- Sustainable
- Connected



## Why a Community Garden?

A proven model for connection,  
resilience, and wellbeing



## What Community Gardens Provide

- Food resilience
- Social connection
- Skill-sharing
- Environmental education
- Volunteer opportunities
- Community pride

Welcome to the

# Canterbury Community Gardens Association

Find your closest community garden

The Canterbury Community Gardens Association supports over 55 community gardens across Canterbury.

Established in 2000, we provide resources, training, and support to build stronger more engaged communities, whilst fostering human connection and environmental diversity.



- Local Community Gardens are supported by an established regional association
- This group was established over 25 years ago
- Aligned with CCC values

## Community gardens work across Aotearoa

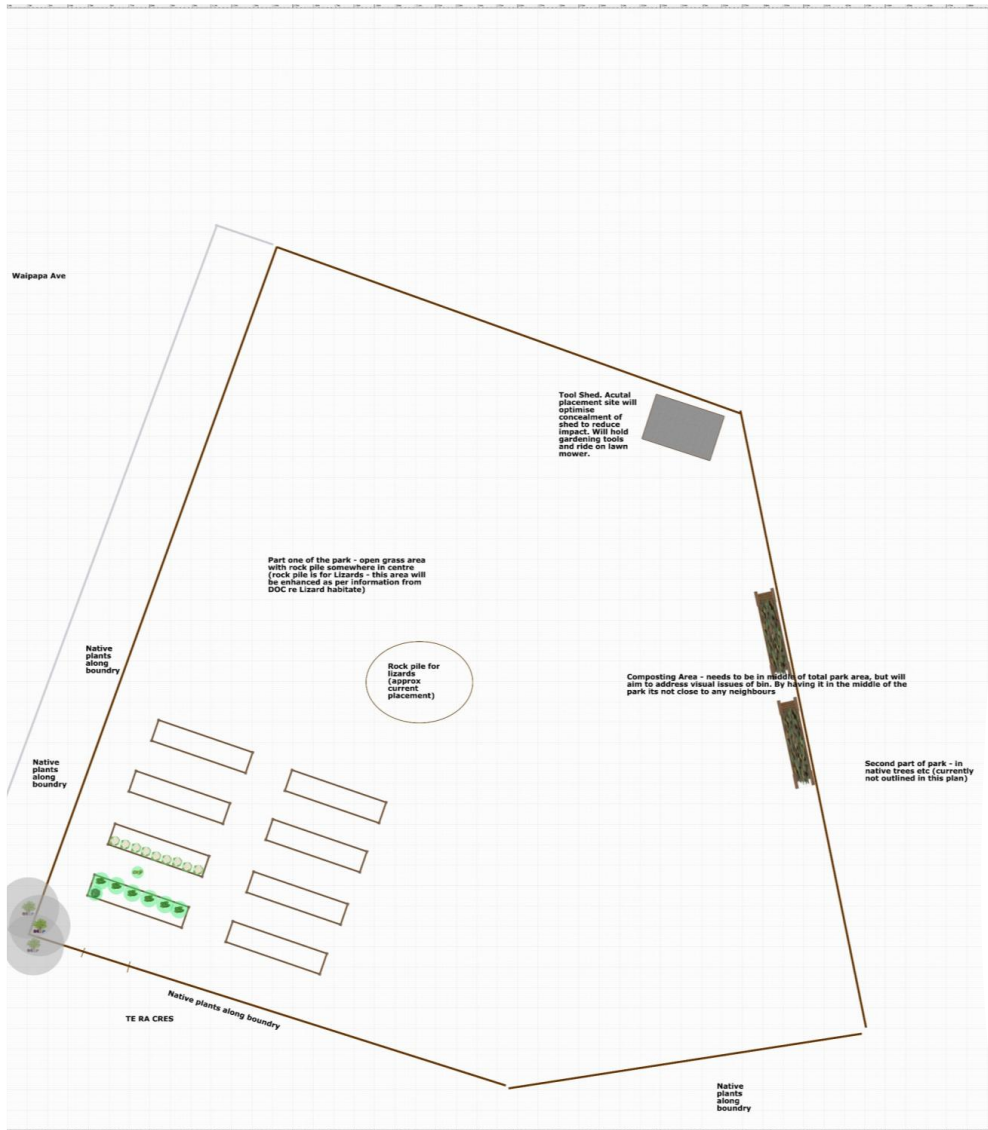
- Marton: connection + food resilience
- Waitara: community pride + education
- Auckland: neighbours connecting through baking + gardening



## Why Te Rā Is a Good Fit for a Community Garden

- Upper area currently under-utilized
- Garden would provide a regular, year-round community focus
- Interest from locals who want to learn, share, and grow food





## What We Will Grow & Do

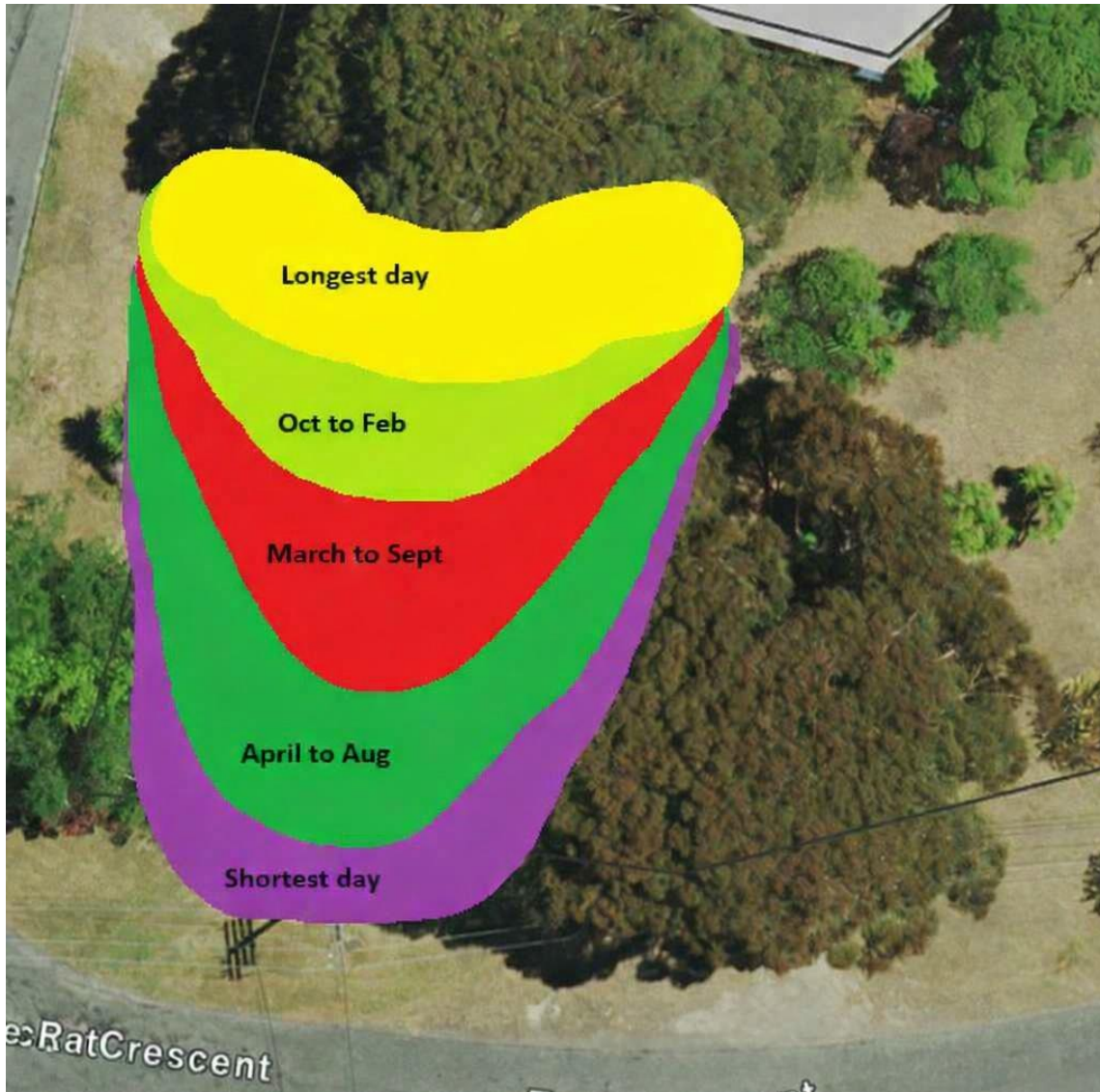
- Seasonal vegetables
- Herbs
- Pollinator plants
- Composting
- Workshops
- Tamariki learning opportunities

# The One Barrier: Winter Sunlight

Winter crops require 6+ hours of direct sun (Daltons & Kings Plant Barn guidance)

(Photo: Te Ra Community Park 15 August 2025)





## Tree Shade Projections

Diagram provided by Pete Ozich

Diagram developed using solar view tool from NIWA  
<https://solarview.niwa.co.nz/>



## Why we would like the tree removed

- Non-native eucalyptus
- Evergreen canopy blocks winter sun
- Roots spread will affect the garden - they will come up through the raised beds seeking nutrients and water
- Sits on boundary
- Root spread affecting neighbouring property
- Neighbour supports removal

## After Removal

- Winter sunlight restored
- Replant natives in appropriate areas
- Improved biodiversity
- Long-term safety and maintenance





## Conclusion:

### What We're Asking For

- Approve lease change for community garden
- Approve removal of gum tree
- Support a community-led, sustainable project