

---

## Te Pātaka o Rākaihautū Banks Peninsula Community Board Information Session/Workshop AGENDA

---

### Notice of Information Session/Workshop Te Pānui o te Hui:

Te Pātaka o Rākaihautū Banks Peninsula Community Board Information Session/Workshop will be held on:

**Date:** Monday 16 February 2026  
**Time:** 10:00 am  
**Venue:** Little River Wairewa Boardroom  
4238 Christchurch Akaroa Road  
Little River Wairewa

---

### Membership Ngā Mema

Chairperson	Lyn Leslie
Members	Tyrone Fields
	Jillian Frater
	Asif Hussain
	Cathy Lum-Webb
	Nigel Millar
	Josie Ogden Schroeder

---

**11 February 2026**

#### Principal Advisor

Penelope Goldstone  
Manager Community Governance  
Tel: 941 5689  
[penelope.goldstone@ccc.govt.nz](mailto:penelope.goldstone@ccc.govt.nz)

#### Meeting Advisor

Liz Beaven  
Community Board Advisor  
Tel: 941 6601  
[liz.beaven@ccc.govt.nz](mailto:liz.beaven@ccc.govt.nz)

**Website:** [www.ccc.govt.nz](http://www.ccc.govt.nz)

**Note:** This forum has no decision-making powers and is purely for information sharing.

**To watch the meeting live, or previous meeting recordings, go to:**

<https://www.youtube.com/@bankspeninsulacommunityboa3600/streams>

**To view copies of Agendas and Notes, go to:**

<https://www.ccc.govt.nz/the-council/meetings-agendas-and-minutes/>



## TABLE OF CONTENTS NGĀ IHIRANGI

<b>Karakia Tīmatanga .....</b>	<b>3</b>
<b>1. Apologies Ngā Whakapāha .....</b>	<b>3</b>
<b>2 Open Forum Te Wā Kōrerorero .....</b>	<b>3</b>

## INFORMATION SESSION/WORKSHOP ITEMS

<b>3. Parks Capital Programme Overview.....</b>	<b>5</b>
The time allocated for this Information Session/Workshop is 60 minutes.	
<b>4. Workshop - Te Pātaka o Rākaihautū Banks Peninsula Toilets .....</b>	<b>7</b>
The time allocated for this Information Session/Workshop is 45 minutes.	
<b>5. 2026 Transport Work Programme Priorities and Update .....</b>	<b>11</b>
The time allocated for this Information Session/Workshop is 45 minutes.	
<b>Karakia Whakamutunga</b>	



## **Karakia Tīmatanga**

Whakataka te hau ki te uru	<i>English translation</i>
Whakataka te hau ki te tonga	Cease the winds from the west
Kia mākinakina ki uta	Cease the winds from the south
Kia mātaratara ki tai	Let the breeze blow over the land
E hī ake ana te atakura	Let the breeze blow over the ocean
He tio, he huka, he hau hū	Let the red-tipped dawn come with a sharpened air.
Tihei mauri ora!	A touch of frost, a promise of a glorious day.

### **1. Apologies Ngā Whakapāha**

Apologies will be recorded at the meeting.

### **2. Open Forum Te Wā Kōrerorero**

#### **2.1 Freedom Camping, Destination Management Plan and Wairewa Weed Busters**

Marcus Puentener, local resident, will speak to the Board regarding:

- Freedom Camping;
- Te Pātaka o Rākaihautū Banks Peninsula Destination Management Plan; and
- Wairewa Weed Busters.

To present to the Community Board, refer to the [Participating in decision-making](#) webpage or contact the meeting advisor listed on the front of this agenda.



### 3. Parks Capital Programme Overview

Reference Te Tohutoro: 26/252957

Bridie Gibbings, Capital Development Operations Manager –  
Community Parks

Presenter(s) Te Kaipāhō: Paul Devlin, Manager Regional Parks

Al Hardy, Manager Community Park

Jacqui Cook, Senior Advisor Parks Capital Programme

#### 1. Detail Te Whakamahuki

<b>Timing</b>	This workshop is expected to last for 60 minutes.
<b>Purpose / Origin of the Workshop</b>	The purpose of the staff-initiated workshop is to update Te Pātaka o Rākaihautū Banks Peninsula Community Board on the Parks Unit capital programme.
<b>Background</b>	The update aims to support the Community Board in prioritising its Community Board Plan and informing its annual plan bid. The workshop will also provide a high-level overview of the Parks Unit structure.
<b>Key Issues</b>	<ul style="list-style-type: none"> <li>Update on Marine Structures. What is in the Programme and what is not.</li> <li>Heritage Assets including buildings.</li> <li>Reserve Committees – Future funding to support their ongoing development and renewal works.</li> </ul>
<b>Next Steps</b>	<ul style="list-style-type: none"> <li>Provide the Board with additional information on the Parks Unit Capital Programme not covered in the workshop, and continue open dialogue to support prioritisation of the Community Board Plan and Annual Plan bid.</li> </ul>
<b>Useful Links</b>	<ul style="list-style-type: none"> <li>Not applicable.</li> </ul>

#### Attachments Ngā Tāpirihanga

There are no attachments to this coversheet.

#### Signatories Ngā Kaiwaitohu

<b>Author</b>	Bridie Gibbings - Manager Operations - Parks Development
<b>Approved By</b>	Rupert Bool - Head of Parks



## 4. Workshop - Te Pātaka o Rākaihautū Banks Peninsula Toilets

Reference Te Tohutoro: 25/2652081



Presenter(s) Te Kaipāhō: Maria Adamski, Senior Parks Asset Planner

### 1. Detail Te Whakamahuki

<b>Timing</b>	This workshop is expected to last for 45 minutes.
<b>Purpose / Origin of the Workshop</b>	<p>Following a presentation to Te Pātaka o Rākaihautū Banks Peninsula Community Board in July 2025 the Community Board requested a workshop to discuss the suitability of toilet locations in the Banks Peninsula Ward, the Long-Term Plan program for refurbishment and renewal of the toilets, removal of toilets, and new toilets.</p> <p>To present information on the maintenance, locations, and long-term plan program for public toilets in the Banks Peninsula Ward and seek Te Pātaka o Rākaihautū Banks Peninsula Community Board's input into the future planning for this service.</p>
<b>Background</b>	<p>Te Pātaka o Rākaihautū Banks Peninsula Community Board are developing its Board Plan and have identified 'Fit for purpose Public Toilets' as a priority. Toilets are considered a key element of visitor infrastructure, and it is expected that they are well planned and future proofed.</p> <p>There are 40 toilets on Banks Peninsula with many of these in isolated areas. Post 2010 Banks Peninsula has experienced an increase in visitors.</p> <p>Three toilet renewals, Awa-iti Domain, Duvauchelle Sports Grounds and Le Bons Bay, were completed in 2015.</p> <p>Beca were commissioned and completed a report in August 2016 and June 2017 assessing the Onsite Wastewater Capacity of nine toilet sites located on Banks Peninsula beachfronts. The report recommendations formed the program of works on toilets for the next five years. The actions have been either completed, are underway, or in planning.</p> <p>In 2020 Cass Bay and Stoddart Point toilets were renewed.</p> <p>Purau Bay Recreation Ground toilet renewal is planned for FY26, Stanbury Reserve toilet, Wainui, refurbishment project is underway and Tikao Bay toilet renewal is in the early stages of planning.</p>
<b>Key Issues</b>	<ul style="list-style-type: none"> <li>• Climate Change, sea level rising, land slips, coastal erosion.</li> <li>• Banks Peninsula is a large area with toilets located in isolated areas.</li> <li>• Increased visitors and freedom camping.</li> <li>• Competing projects within limited budget.</li> </ul>
<b>Next Steps</b>	<ul style="list-style-type: none"> <li>• Incorporate information from the workshop into the 2027/2037 Long Term Plan.</li> </ul>
<b>Useful Links</b>	<ul style="list-style-type: none"> <li>• Recording of Te Pātaka o Rākaihautū Banks Peninsula Community Board meeting 21st July 2025 of Public Toilet Information session provides background to this workshop. It includes a power point presentation that covers the condition of toilets, maintenance program and renewals program. The recording starts at 43.33mins to</li> </ul>

	1hour 23mins. Note there is a loss of sound partway through. <a href="https://www.youtube.com/watch?v=ulq2R2Qqm6k">https://www.youtube.com/watch?v=ulq2R2Qqm6k</a> .
--	---

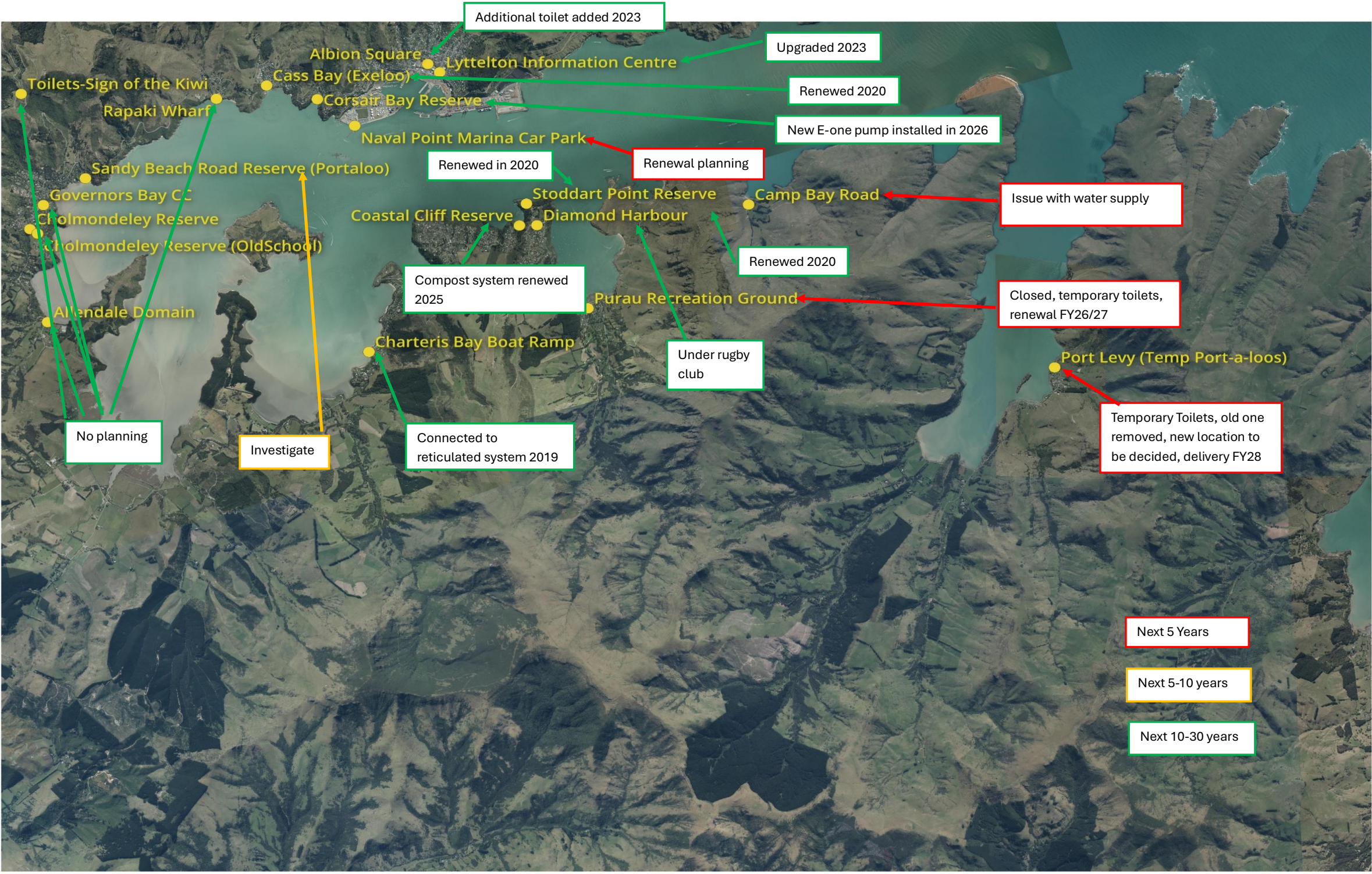
## Attachments Ngā Tāpirihanga

No.	Title	Reference	Page
A  	Lyttelton Harbour and Banks Peninsula toilets Map	26/188548	9

## Signatories Ngā Kaiwaitohu

<b>Author</b>	Maria Adamski - Senior Parks Asset Planner
<b>Approved By</b>	Kelly Hansen - Manager Parks Planning & Asset Management Al Hardy - Manager Community Parks Rupert Bool - Head of Parks





Lyttelton Harbor





Banks Peninsula



## 5. 2026 Transport Work Programme Priorities and Update

Reference Te Tohutoro: 25/2610729

Presenter(s) Te Kaipāhō: Edwin Tiong, Traffic Engineer

### 1. Detail Te Whakamahuki

<b>Timing</b>	This information session is expected to last for 45 minutes.
<b>Purpose / Origin of the Information Session</b>	To inform the Board about several potential projects around Te Pātaka o Rākaihautū Banks Peninsula for prioritisation in the programme, and available funding.
<b>Background</b>	Staff held an Information Session/Workshop with the Board on 24 March 2025 to discuss several potential projects relating to Te Pātaka o Rākaihautū Banks Peninsula area. Additional funding for the Inner Harbour Route projects has now become available. Staff have prioritised projects that align with this funding opportunity. The related priority projects are outlined below.
<b>Key Issues</b>	<p><b><u>Governors Bay</u></b></p> <ol style="list-style-type: none"> <li>1. Establish a treatment plan at the intersection of Main Road, Governors Bay Road, and Dyers Pass Road to make it difficult for anti-social road users to perform burnouts at that intersection.</li> <li>2. Establish a safe pedestrian crossing location by the bus stop.</li> </ol> <p>Three options have been considered by staff previously.</p> <ol style="list-style-type: none"> <li>1. Option 1 – Retaining wall on Zephyr Terrace west side (<b>Attachment A</b>). Potential to be expensive to build.</li> <li>2. Option 2 – In-lane bus stop proposal (<b>Attachment B</b>). Bus stopping in lane could delay traffic.</li> <li>3. Option 3 – Maintain existing bus stop location (<b>Attachment C</b>). Cheaper to build.</li> </ol> <p>Staff has ruled out Options 1 and 2.</p> <p>Option 1 – Traffic island at the intersection of Main Road / Governors Bay Road, 35m retaining wall on the west side of Zephyr Terrace, refuge island and 25m kerbing and asphalt footpath on Main Road and Zephyr Terrace, with bus stopping in the middle of the lane - expensive to build; potential hazard for rear-ended crash when bus stopping to pick up or drop off passenger.</p> <p>Option 2 – Traffic island at the intersection of Main Road / Governors Bay Road, refuge island and 25m of kerbing and asphalt footpath on Main Road and Zephyr Terrace, with bus stopping in the middle of the lane - potential hazard for rear-ended crash when bus stopping to pick up or drop off passenger.</p> <p>Staff recommend Option 3 – Traffic Island at the intersection of Main Road / Governors Bay Road, refuge island and 25m of kerbing and asphalt footpath on Main Road and Zephyr Terrace, with existing recessed bus stop. Note that due to geographical terrain left turn traffic out of Zephyr Terrace will always track over the median or the opposite lane for all 3 options.</p>

Cost estimate to install \$130,176 +GST (including 30% contingency, excluding lighting and service alterations). This project can be funded from the Inner Harbour project.

#### **Rāpaki Crossing**

*Establish a crossing point on Governors Bay Road to access bus shelter as part of the LTP.*

Two options have been produced by staff.

1. Option 1 – Pedestrian refuge island with timber walkway and retaining wall (**Attachment D**). Expensive to build.
2. Option 2 – Pedestrian safety improvement – AC footpath with a more direct crossing path to bus stop (**Attachment E**).

Staff recommend Option 2 as it is a more direct path for pedestrians to cross Governors Bay Road. This is also the current location where pedestrian cross the road. The southeast corner of the intersection of Rapaki Drive and Governors Bay Road to be widened to allow for smooth left turn into Rapaki Drive. Cost estimate to install \$52,500 +GST (including traffic management). This project can be funded from the Inner Harbour project.

#### **Akaroa**

*Beach Road – Aylmers Valley to Hempleman Drive pedestrian safety improvements. The Board has requested that staff review the condition of the seaward grass verge along Beach Road from the Boat Club to the Yacht Club, which is a popular walking route frequently used by locals and tourists. The road is narrow and the grass often long and difficult to walk through, causing safety concerns when pedestrians walk along the road. Is there a possibility to provide a safe walking space for pedestrians.*

This section of road has been reduced to 30km/h a few years ago to support people walking along the roadway. Staff have presented a few options and undertaken cost estimates below to the Board during the Information Session/Workshop last year 24 March 2025:

1. Option 1 – Marked pedestrian walkway - \$4,000 +GST.
2. Option 2 – Marked pedestrian walkway along seawall side with speed humps - \$34,000 +GST.
3. Option 3 – Marked pedestrian walkway along land side with speed humps - \$91,000 +GST.
4. Option 4 – Do nothing / status quo.

Staff recommended Option 1 as it helps to support the existing desire line to access the lighthouse. It is also the cheapest option that can be funded through minor safety budget allocated to the Banks Peninsula. The Board acknowledged, and recommended Staff to consider extending the pedestrian walkway to Takapūneke reserve.















An updated plan as shown in **Attachment F** with marked pedestrian walkway along Beach Road extended up to the accessway Britomart Monument. Cost estimate is roughly \$8,000 +GST.

#### **Corsair Bay**

*Park Terrace – Corsair Bay – Cars Park on both sides of the road especially in summer, which may block emergency vehicles passing. Could the road marking be reviewed.*

	<p>Staff have developed a draft scheme plan, see <b>Attachment G</b>. Approximate cost to install \$25,000 +GST. This project can be funded from the Inner Harbour project. The scheme is ready for consultation.</p> <p><b><u>Charteris Bay</u></b></p> <p><i>Along Marine Drive – whether 200 metres of missing footpath in Charteris Bay can be established.</i></p> <p>Staff have considered two options, noting that there are numerous sections of Marine Drive in a similar situation with no footpath. Staff has consulted the five residents affected by the proposal, and majority are in objection. Currently, this project is on hold while Charteris Bay Residents Association Howard Buchanan continues discussion with the affected residents.</p> <p><b><u>Cass Bay Crossing</u></b></p> <p><i>Can a crossing point on Governors Bay Road to access to Steadfast Reserve be installed?</i></p> <p>Staff are currently undertaking investigations to identify an appropriate crossing point.</p> <p><b><u>Purau Bay</u></b></p> <p><i>Investigate adequate separation between pedestrians walking on the informal track and traffic on the roadway on Purau avenue from the Coastal Track to Purau Beach. Refer to memo in Attachment I.</i></p> <p>The Head-to-Head Working Party recommended that Te Pātaka o Rākaihautū Banks Peninsula Community Board approve Option 3: Localised widening of the informal track on seaward side of Purau Avenue. The cost estimate for Option 3 is \$25,000.</p> <p>Furthermore, the Working Party notes that this option addresses the area from the Purau Bay Boat Ramp to the Beach and highlighted its request for the same or similar treatment of the pathway from the exit of the Coastal track (from Stoddard Point) to the boat jetty as originally requested on 11 March 2025. Staff visited the site and considered that the route is no longer necessary to build a path as the outside grass edge is cut back there is perfectly good surface for pedestrian to safely walk the path. Staff have informed the Head-to-Head walking party on 2 February 2026.</p> <p><b>Budget</b></p> <p>There are approximately \$20,000 (±\$5,000) available from our Minor Safety Intervention fund for Banks Peninsula projects this year. The Board can decide which above projects to proceed so staff can initiate the consultation.</p> <p>In addition to the above budget, there is additional funding for Inner Harbour Route Project available for use within the next two year. Projects such as the Governors Bay, Rapaki Crossing, and Corsair Bay could be funded through the Inner Harbour Route Project.</p>
<p><b>Next Steps</b></p>	<ul style="list-style-type: none"> <li>• Staff will initiate another briefing with the Board on 16 March to provide an update on the next steps for each project and proposed timelines.</li> </ul> <p>Staff will initiate the consultation process once the priority of projects is established.</p>

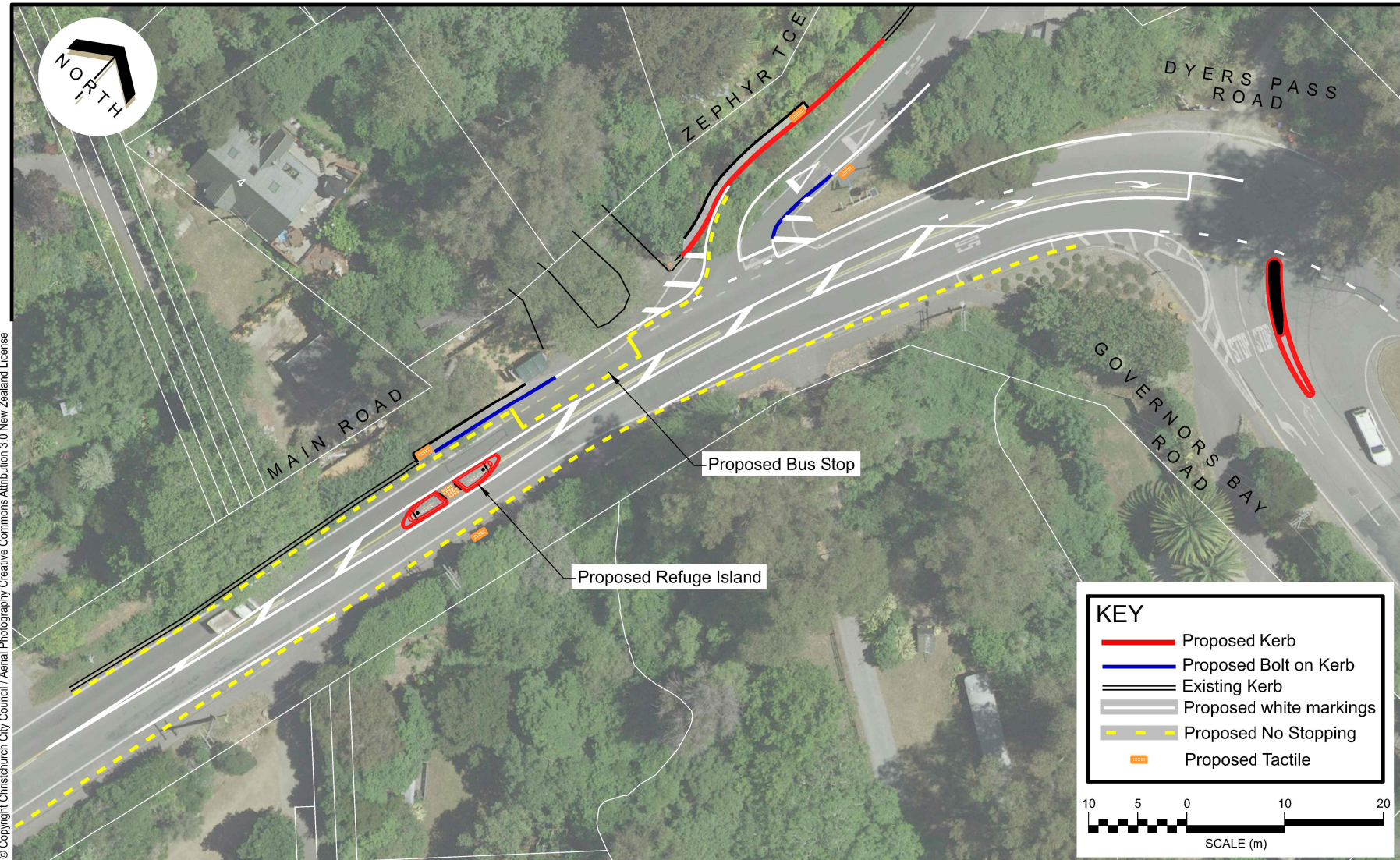
## Attachments Ngā Tāpirihanga

No.	Title	Reference	Page
A  	Attachment to report 25/368670 (Title: Governors Bay Road Dyers Pass Road and Main Road Safety Improvement TG146878-option 1)	26/230984	15
B  	Attachment to report 25/368670 (Title: Governors Bay Road Dyers Pass Road & Main Road Safety Improvement TG146878-option 2)	26/230999	16
C  	Attachment to report 25/368670 (Title: Governors Bay Rd Dyers Pass Rd & Main Rd safety improvement TG146878-option 3 tracking)	26/231005	17
D  	Governors Bay Road Rapaki Drive Proposed Pedestrian Improvements drawing tg150167 Option 1 For Information	26/231008	18
E  	Governors Bay Road Rapaki Drive Proposed Pedestrian Safety Improvement drawing rd3697s4 Option 2 For Consultation	26/231011	19
F  	Beach Road Proposed Pedestrian Safety Improvements Option 1 roadmarking only	26/138775	20
G  	Attachment to report 25/368670 (Title: RD369201 Inner Harbour Proposed Edge Lines & No Stopping Restrictions)	26/231015	22

### Signatories Ngā Kaiwaitohu

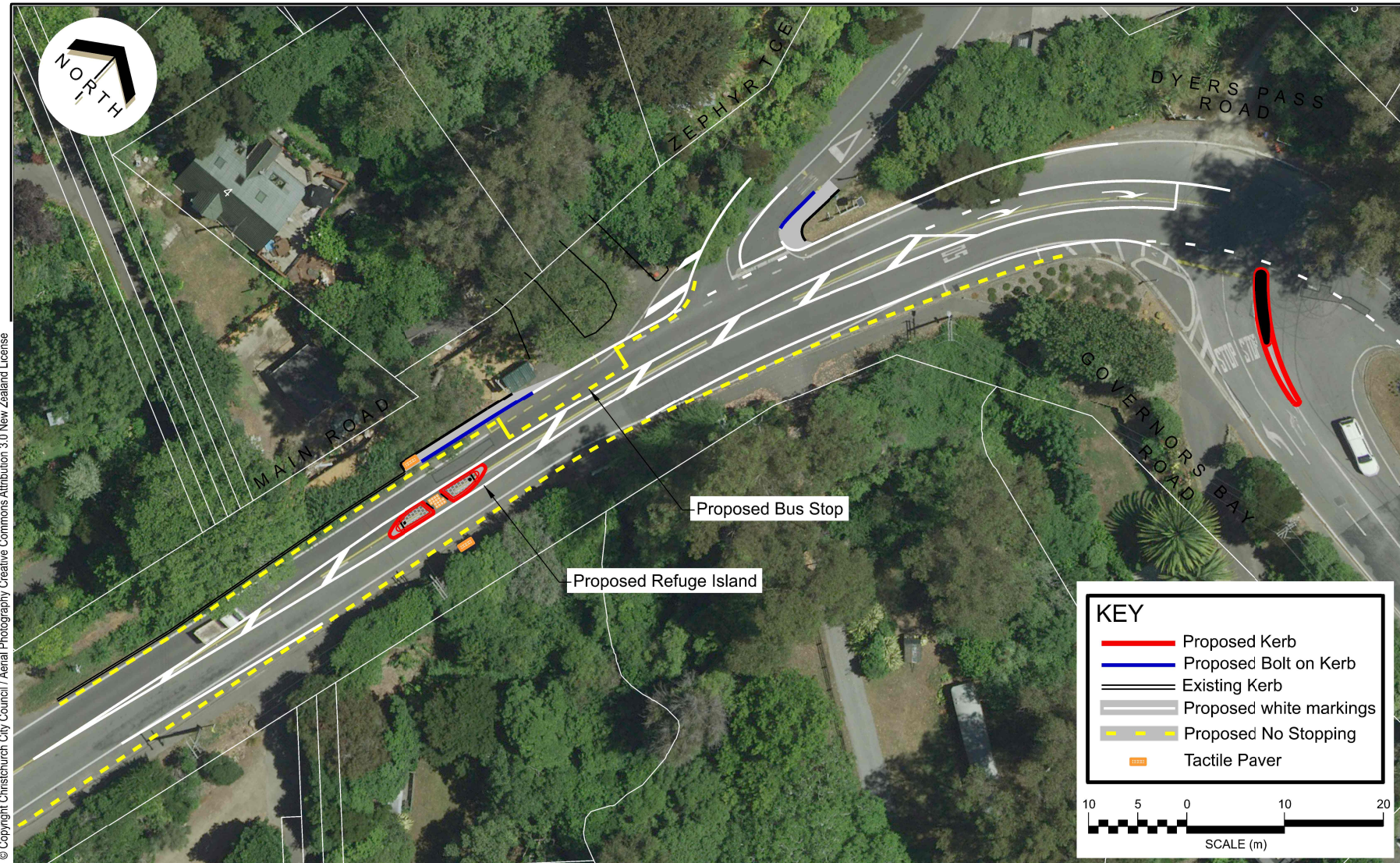
<b>Author</b>	Edwin Tiong - Traffic Engineer
<b>Approved By</b>	Kathy Graham - Team Leader Traffic Operations Stephen Wright - Manager Operations (Transport)





© Copyright Christchurch City Council / Aerial Photography Creative Commons Attribution 3.0 New Zealand License





Christchurch  
City Council

Governors Bay Rd-Main Rd-Dyers Pass Rd  
Proposed Refuge Island and Right Turn Bay  
Consultation Plan  
For Information

Option 2

Original Plan Size: A4

Drawn: VMI Issue 1 20/02/2024  
Designed: ET Drawing: TG146878  
Approved: LB Project:





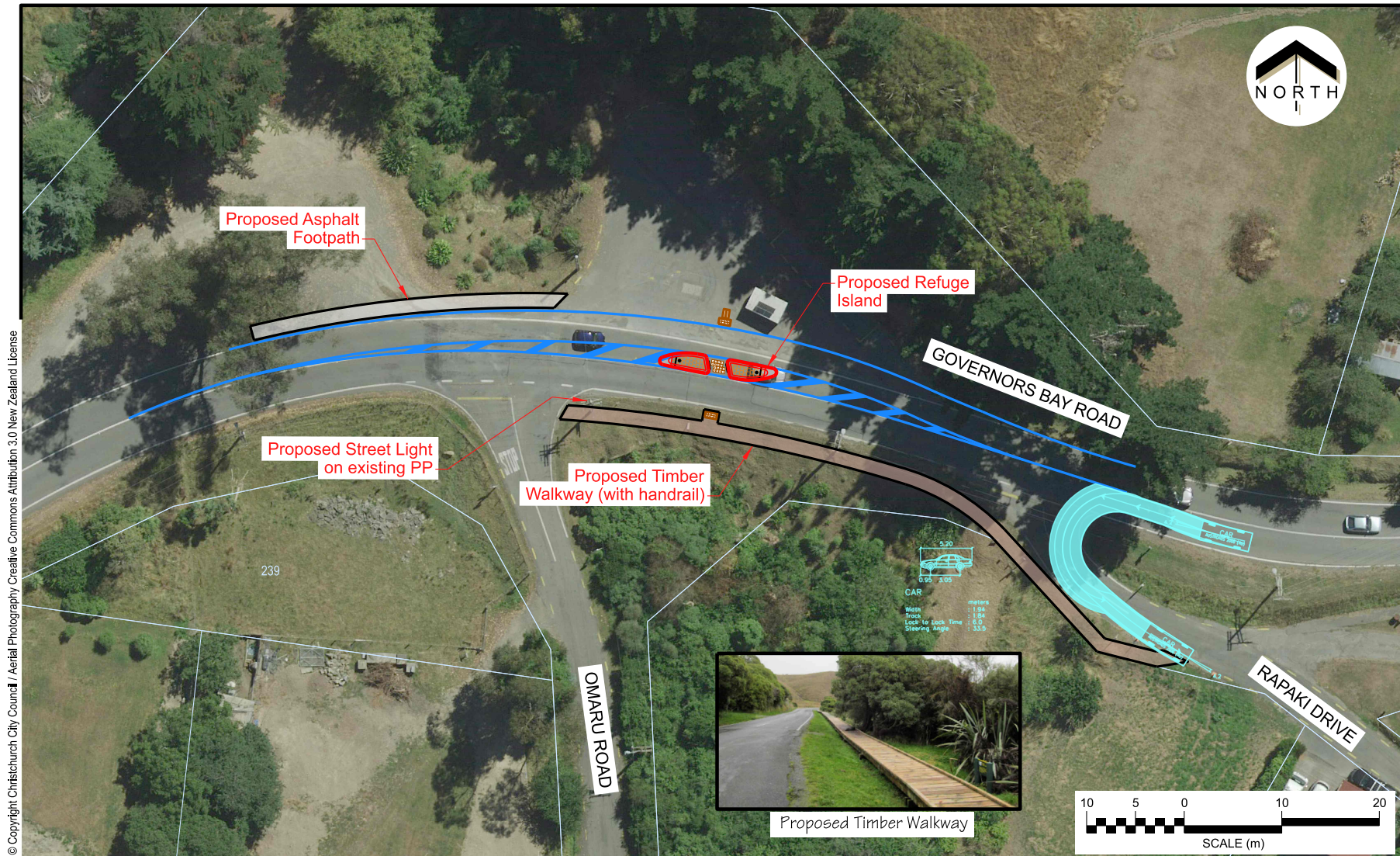
Christchurch  
City Council

Governors Bay Rd-Main Rd-Dyers Pass Rd  
Proposed Refuge Island and Right Turn Bay  
Consultation Plan  
For Information

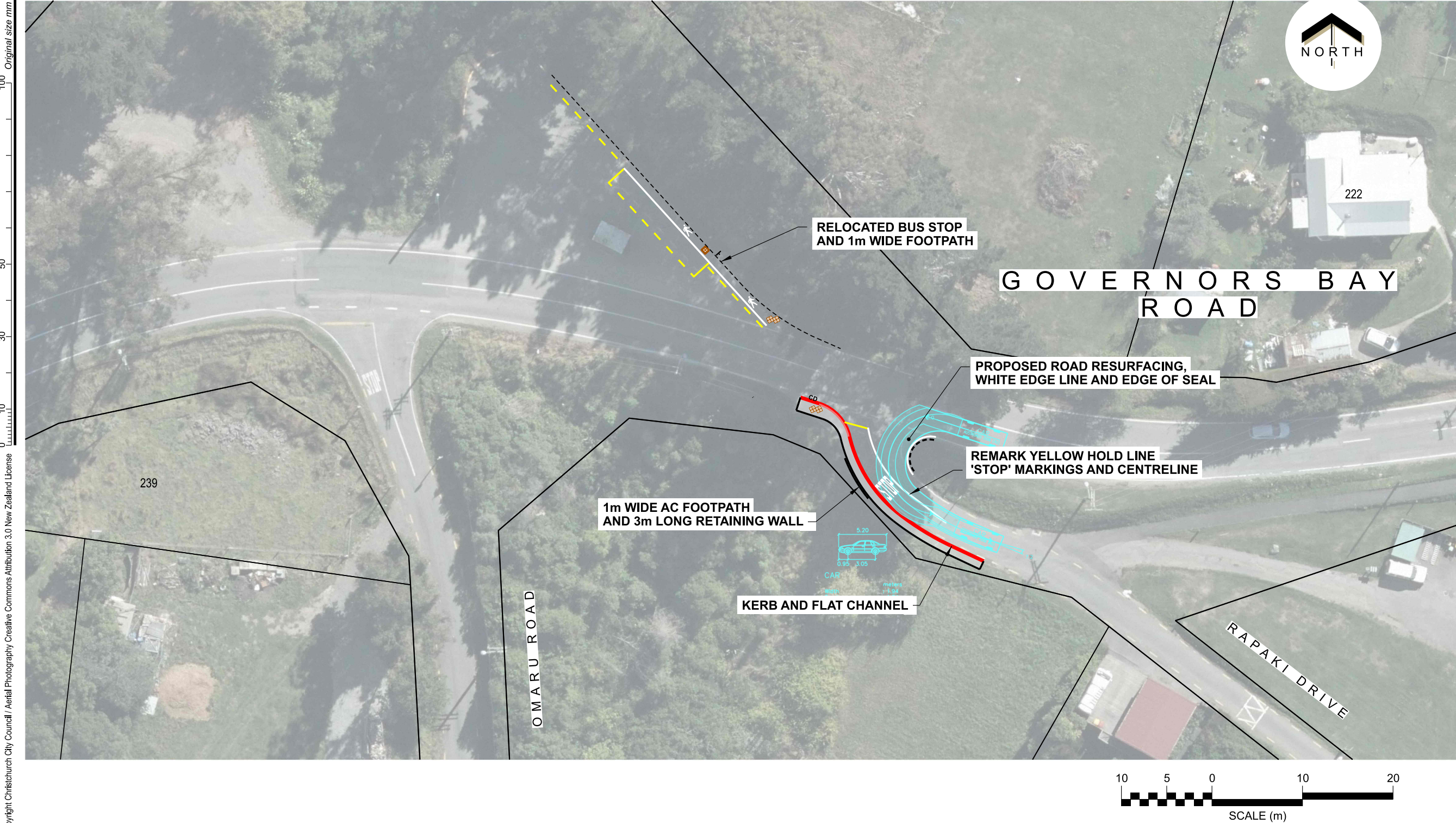
Option 3

Original Plan Size: A4  
Drawn: VMI Issue 1 03/02/2025  
Designed: ET Drawing: TG146878  
Approved: LB Project:

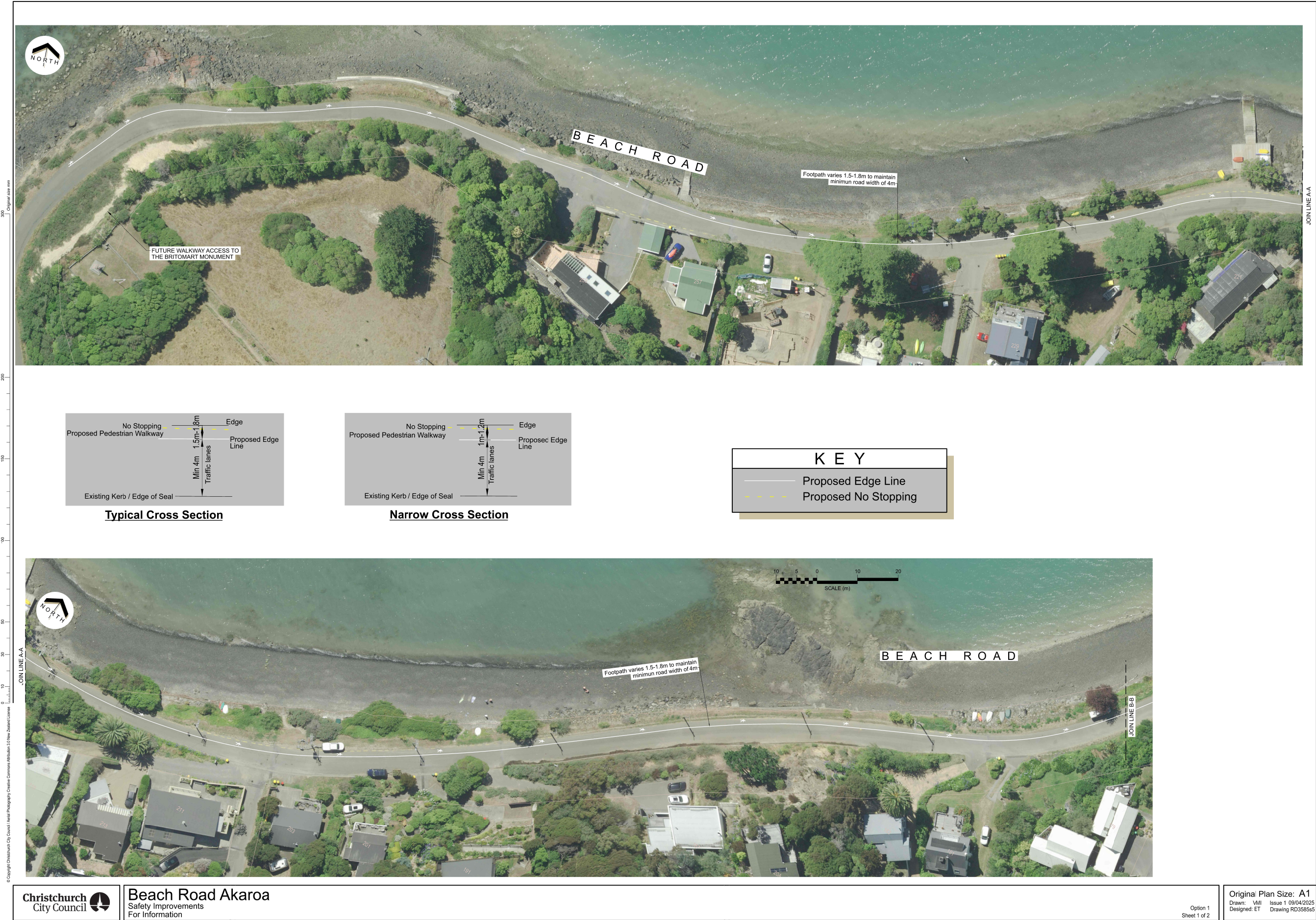




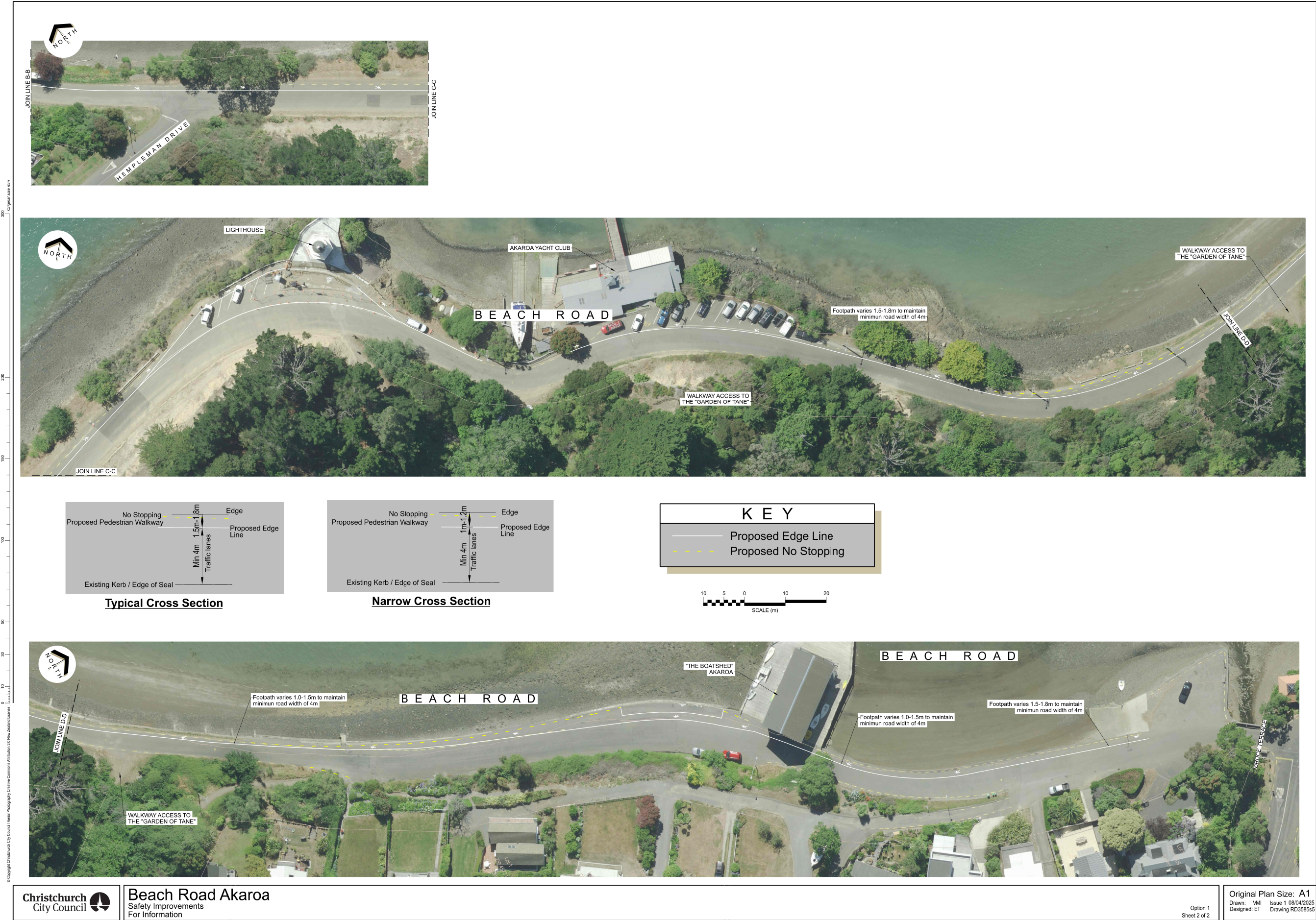




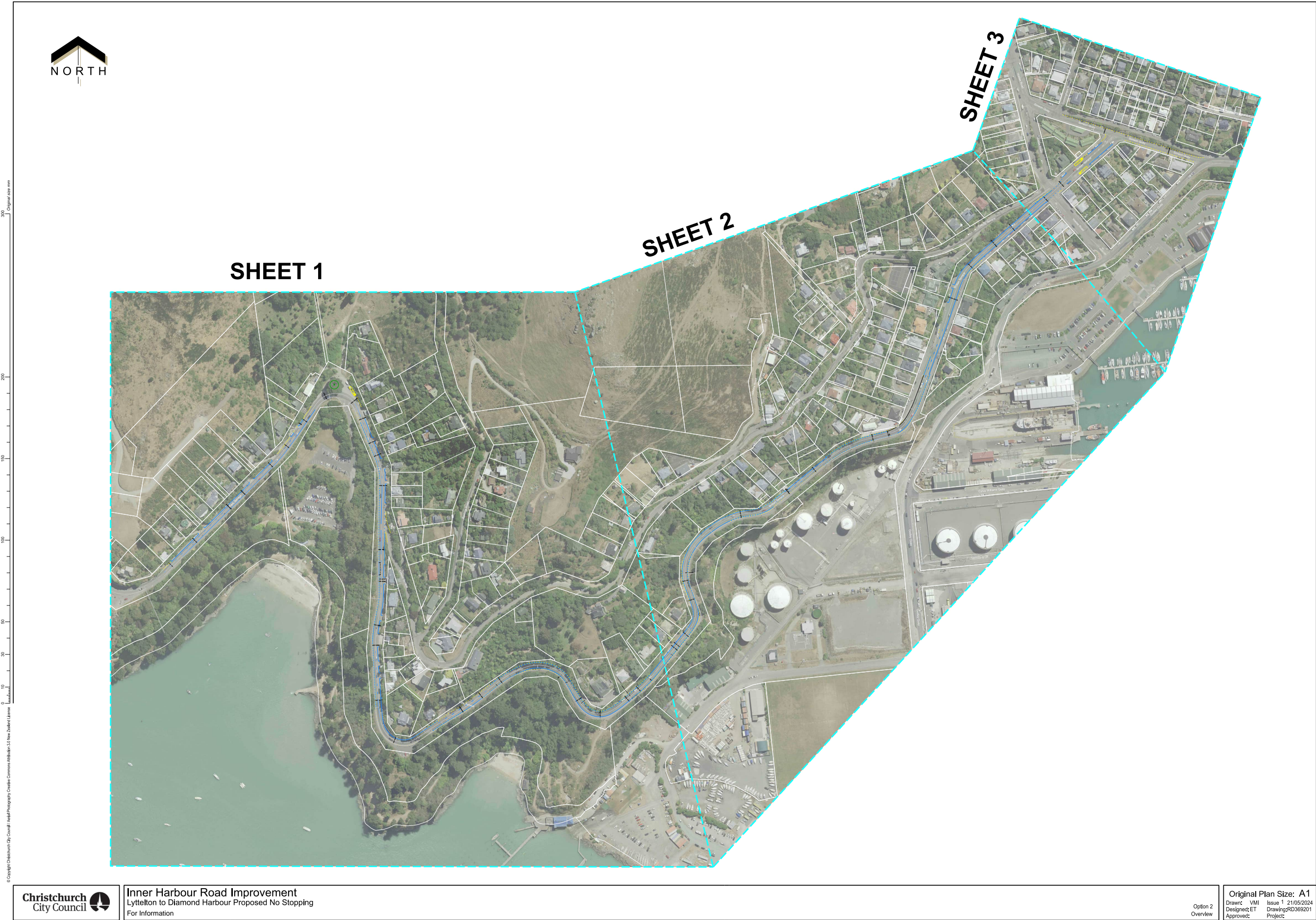




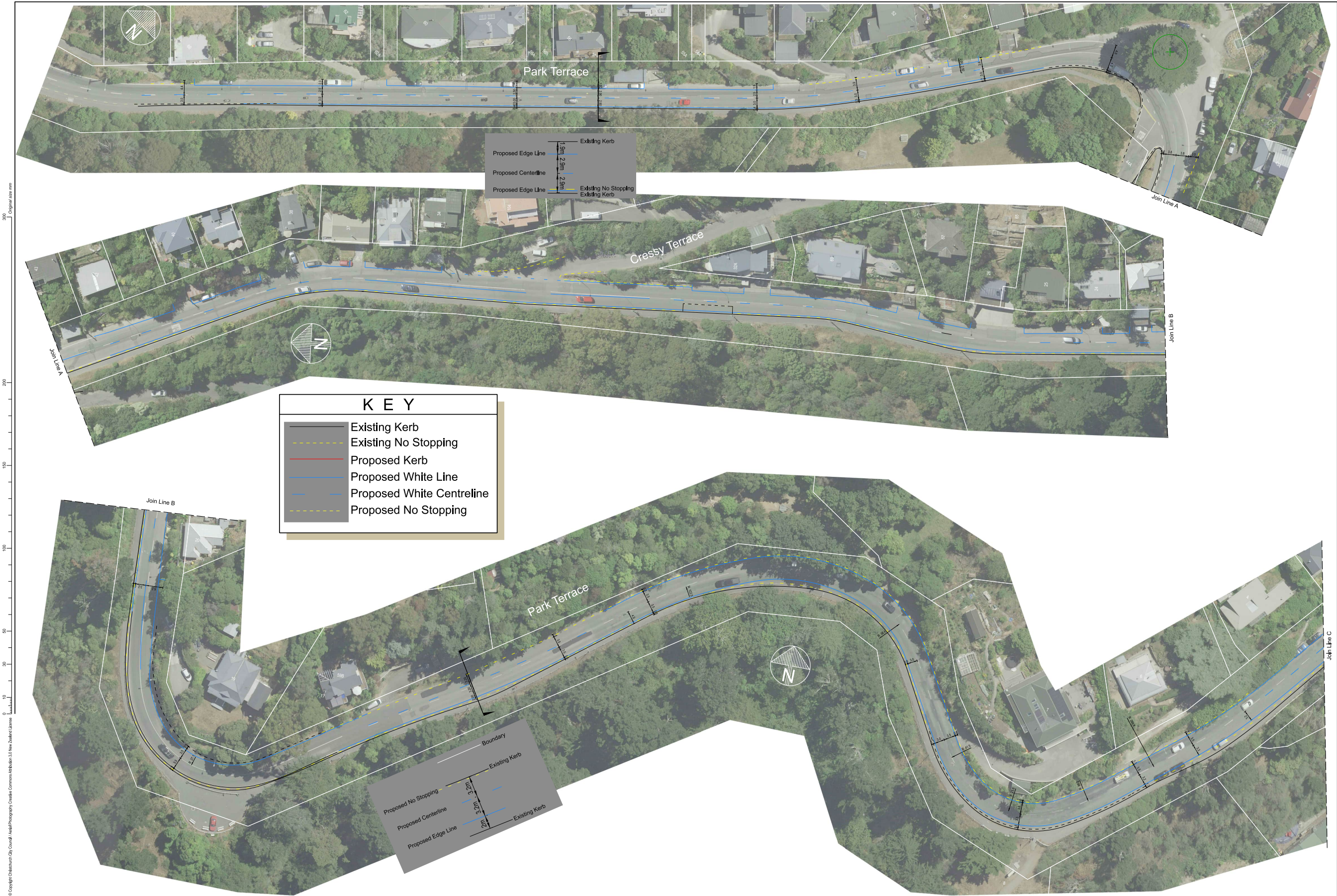




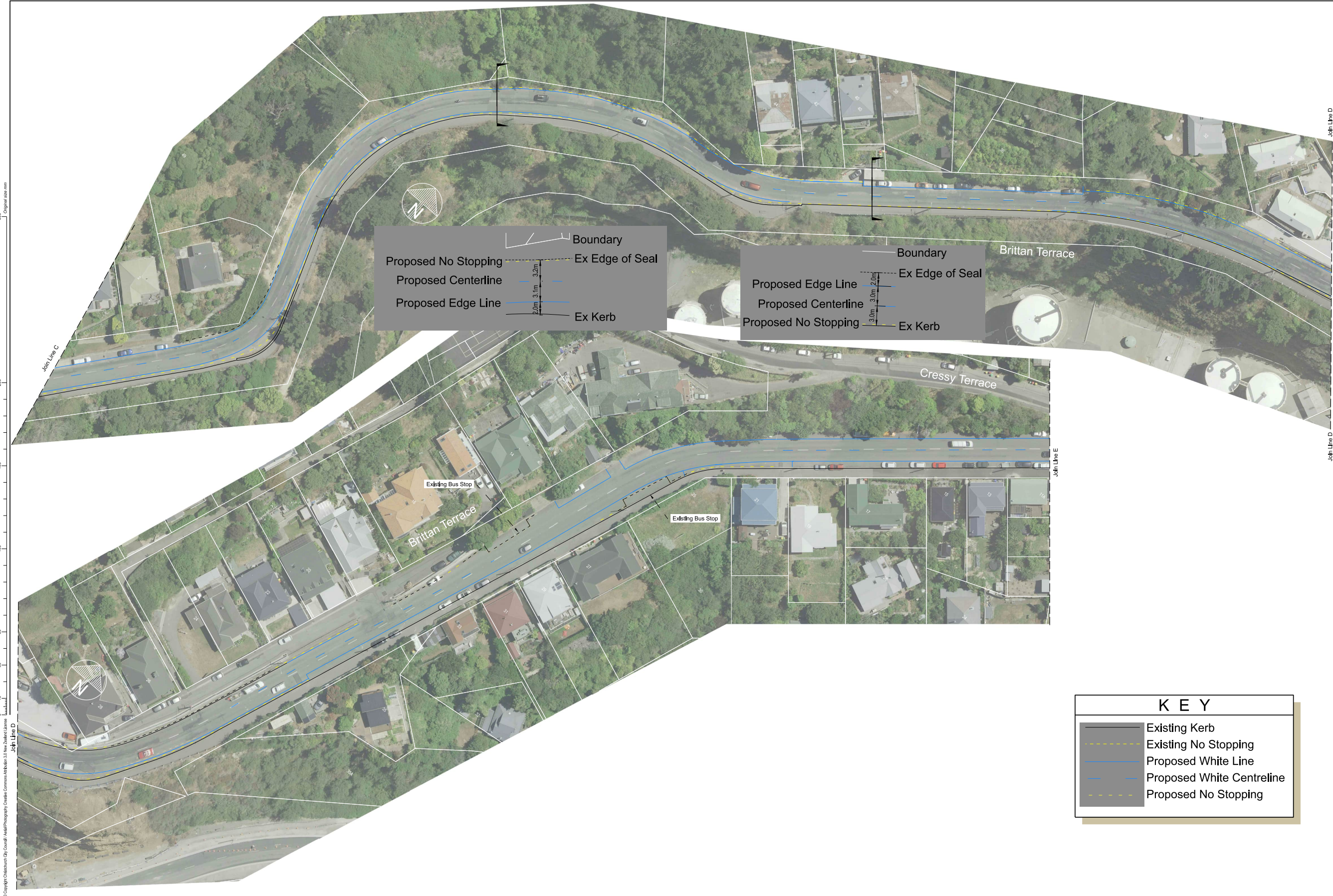














0 10 30 50 100 150 200 300  
Original size mm



K E Y	
	Existing Kerb
	Existing No Stopping
	Proposed White Line
	Proposed White Centreline
	Proposed No Stopping

## **Karakia Whakamutunga**

### **Closing Prayer**

Unuhia, unuhia Unuhia ki te uru tapu nui Kia wātea, kia māmā, te ngākau, Te tinana te wairua i te ara takatā Koia rā e Rongo, whakairia ake ki runga Kia tina! TINA! Hui e! TĀIKI E!	Draw on, draw on, Draw on the supreme sacredness To clear, to free the heart, the body and the spirit of mankind Rongo, suspended high above us (i.e. in 'heaven') Draw together! Affirm!
---	--