

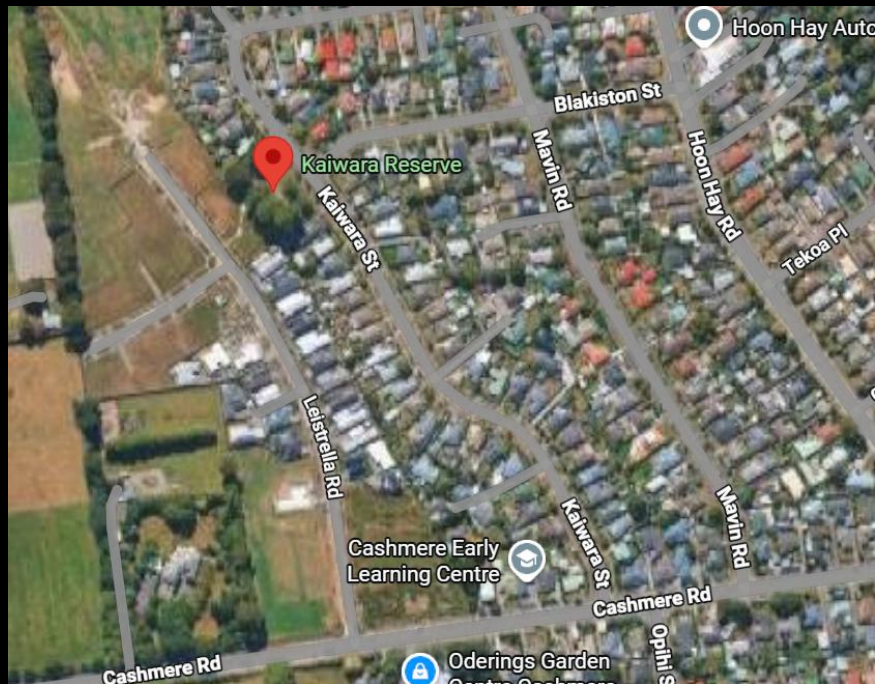
Waihoru
Spreydon-Cashmere-Heathcote Community Board
MINUTES ATTACHMENTS

Date: Thursday 11 December 2025
Time: 4.01 pm
Venue: Linwood Boardroom, Gate B, 180 Smith Street,
Woolston

TABLE OF CONTENTS NGĀ IHIRANGI	PAGE
4.1. Public Forum - Accessibility issues at Kaiwara Reserve	
A. Accessibility Issues at Kaiwara Reserve - presentation to the Board	3
4.2. Public Forum - Sumner Sports Pavilion Committee update	
A. Sumner Sports Pavilion Committee update - presentation to the Board	9
4.4. Public Forum - Noise from basketball court at Spreydon School	
A. Noise from basketball court at Spreydon School - tabled document notes	17
B. Noise from basketball court at Spreydon School - tabled document map	20
10. Urban Forest Planting Plan for Hansen Park	
A. Urban Forest Planting Plan for Hansen Park - staff presentation.....	21



Accessibility Issues at Kaiwara Reserve



- Kaiwara Reserve is used not just by locals but neighbouring areas to access local schools, the orbiter bus stop and for commuters heading into the city
- School kids cycle this way as it is a safer route than Cashmere road as the cycle lane gets blocked at the Cashmere Early Learning Centre



- Post and wire fence prohibits access at the desire line between the constructed footpath on the Leistrella side of the park and the footpath on Blakiston Street leading to the nearest Orbiter bus stop
- It is a trip hazard
- There is no drop down kerb near here



- There are cutdowns both sides of Blakiston Street but no option on the other side of the road
- Wheelchair users, Prams and kids on bikes have no safe access across the street



- There is access to the park here also but no cutdown or at a desire line



- Only cut down available is at a residential driveway
- Recently blocked off access from the park has not worked
- People still use driveway to access park
- Vulnerable users are at risk of collision on the driveway
- Puts significant pressure and stress on homeowner of driveway



GAME ON



Community Board Update
Dec 2025

Sumner Sports Pavilion

Item 4.2

Attachment A



Overview

- The Sumner Sports Pavilion has traditionally been the home of the Sumner Rugby and Cricket clubs. Collective membership is around 1000 people from across the Bays. Fastest growing segment of the wider membership is girls, and membership is increasingly more ethnically diverse.
- The building is no longer fit for purpose
 - No longer meets building code, seismic performance requirements
 - No changing facilities for females and disabled. Also, no disabled toilet.
 - Limited kitchen facilities.
 - Limited storage.
 - Existing design limits use for other sport and recreation activity and is too bar focused.

Overview

- We are building a multi-use facility designed by and for the community.
- Community benefits
 - **Stronger Community Wellbeing:** inclusive hub fostering connection and activity
 - **Youth Development:** safe spaces for young people and families
 - **Emergency Preparedness:** resilient structure in a high-risk area
 - **Year-Round Multi-Use:** sports, events, cultural activities, and community programmes

Project Update

- We have formed a Sumner Sports Pavilion Project Team (all volunteers) which includes community and club representation. Amy Carter is leading the capital campaign. Trevor Hone is leading the build.
- Conceptual design has been completed, and work is now underway on detailed plans in preparation for building consent to be lodged and for our preferred contractor to quote against.
- Our preferred contractor has agreed to an open book approach which allows us to utilise gifts of manpower and materials which keeps costs down and the community involved.
- Communications will largely be undertaken through our website www.sumnerSportsPavilion.kiwi and social media. Direct engagement continues with the neighbours.
- Fundraising started with direct approaches underway. Grant applications, events and crowd funding begin in early 2026.

Key Achievements to Date

- Costs to date (\$350k +) all funded by the Sumner Sports Pavilion
- We have enjoyed significant probono support from local businesses and individuals which has kept costs low on the design phase of both the fundraising campaign and building.
- Signed agreement with Sumner Residents Associations re acting as Emergency Evacuation Hub.
 - Provides elevated safe evacuation point
 - Storage for emergency equipment
 - Serve as base for preparedness training
- Excellent working relationship with CCC Parks & Rec team.
- Signed MOU with Sumner Redcliffs RSA to investigate collaboration including provision of wellbeing/exercise programme for their members.
- Being approached by other sporting clubs without a home about joining the project, which would see greater use.

How can you support?

- Formal endorsement of the project. This would aid with funding applications and fundraising campaign.
- Support of our upcoming T20 Cricket Fundraiser 3pm 5 February. Promotion of the event to your networks and attendance.
- Funding from Council? To date we have received no CCC funding.

GAME ON

Questions?



To Community Board 11/12/2025.

Hello, I'm Mike Bennett and I'm here on behalf of my wife, Aly, and myself.

1. I've owned my home next to what is now Spreydon Primary School for 30 years.
2. Here's a map showing where my house is situated in relation to the school.
3. First it was Manning Intermediate and never had a problem for 25 years. I really enjoyed the happy sound of kids playing.
4. Then about 5-6 years ago it became a primary school. The first thing they do is install a jungle gym climbing set right opposite our bedroom window, the kids regularly sit on top of it and can look into our bedroom window.
But I'm not here to complain about that, I've installed screening to block their view, unfortunately it's blocked my view too.
5. As a Primary School we now have screaming 5 and 6 year olds almost incessantly screaming. High pitched screams. Not giggling, actual screaming. I'm sure you've all heard this before. This really spoils our ability to have the bedroom window open for fresh air, or have breakfast on our patio. But I'm not here to complain about that either.
6. What I am here to complain about is the new basketball hoops installed last year that they put right outside our bedroom and

patio, as the map shows.

The school issues basketballs at 7.30am to the before-school care kids, and I'm sure you can imagine the noise of 4 or 5 basketballs bouncing, bouncing, bouncing on asphalt courts at 7.30am, plus the children's noise that goes with it.

Then again at after-school-care up to 5pm when we're often coming home and wanting a relaxing wine on our patio.

We can't even open our bathroom window in the morning because of the screaming, some of it is fun playing, I admit, which is nice, ...and bouncing balls.!!

7. Anyway, So you can imagine we really look forward to the weekends and especially school holidays when school's out, so we can have breakfast, lunch or a BBQ on the patio with friends.

But no, the school has become very popular with all the local kids and they play with multiple balls at both ends at a time often until dusk at 9pm!!

Our enjoyment of the patio has been ruined.

I asked the school to restrict the hours of use but was refused by the principal saying "*the courts are a community facility, funded by the community and she can't stop people*".

She did offer to put a sign up on the fence asking to respect the neighbours, but the sign ended up being more about respecting school property.

I'm here to ask, no implore you to please restrict the hours of

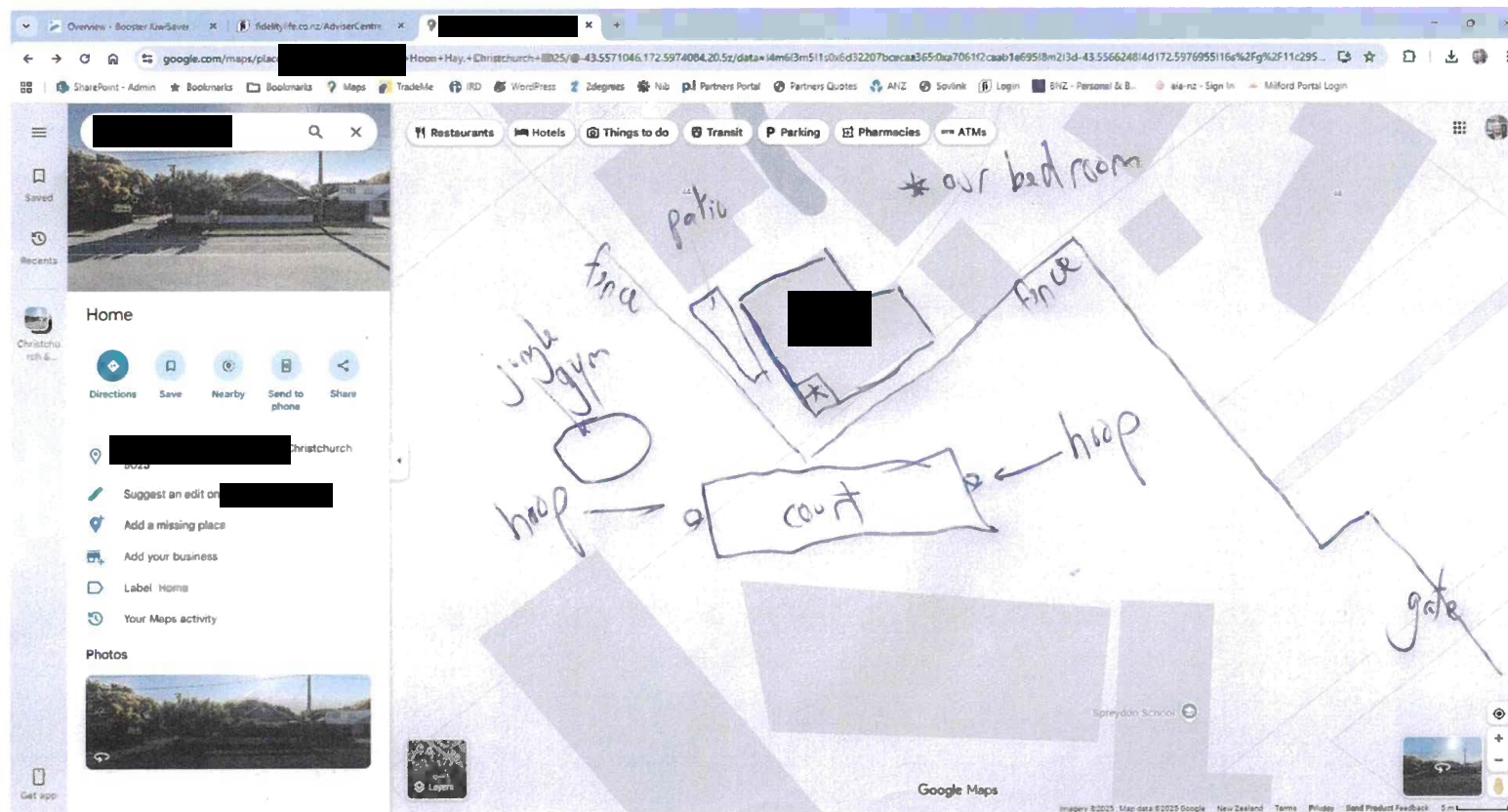
use in some way so we can have our patio back. Now at my age I'm looking forward to spending more time on our patio, and in the garden, but the noise is awful, penetrating and nearly constant.

Here's my request;

1. The basketballs are not issued to kids until the 8.30am normal school grounds opening time.
2. Stop public use of the courts on the weekends so we can enjoy our home again. There are numerous other courts available to use that are nowhere near someone's home.
3. Eg; Pioneer, Hillmorton High, and very close by Bellbird Park on Mathers Rd,

Please help.

Thanks, Mike and Aly Bennett

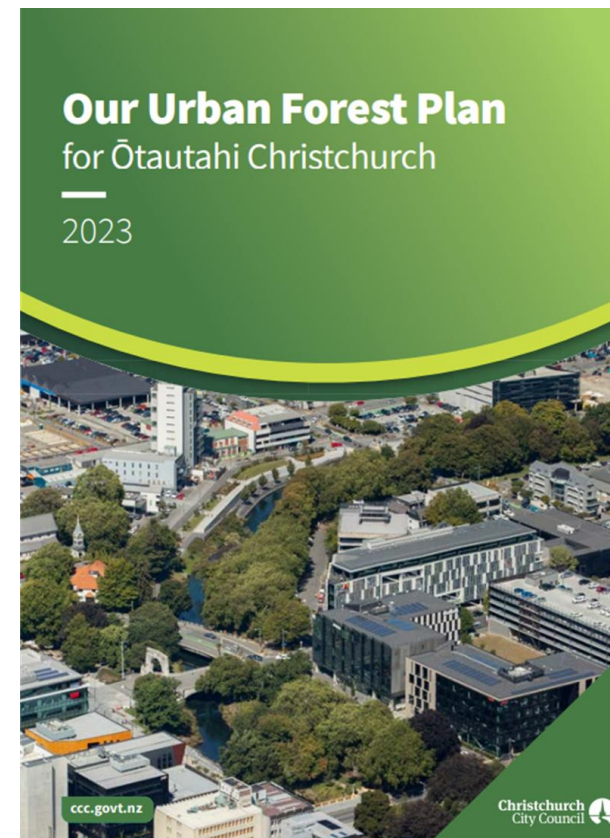


Urban Forest Planting Programme

Hansen Park Planting Plan 2025

Urban Forest Planting Programme

- Increase tree canopy cover to 40% across the city.
- Provide a network of native forest patches across the city.
- Increase the visibility of indigenous species.
- Plant trees in sites that support trees reaching maturity.



Why plant more trees?



Shading helps to reduce temperatures in parks. Climate change modelling shows Canterbury will have 20-60 more hot days each year by 2090 (25°C or above).



Help block wind. Climate change modelling shows wind is likely to increase in speed, winter and spring are likely to be windier.



Take up water from the ground, aiding in storm water management



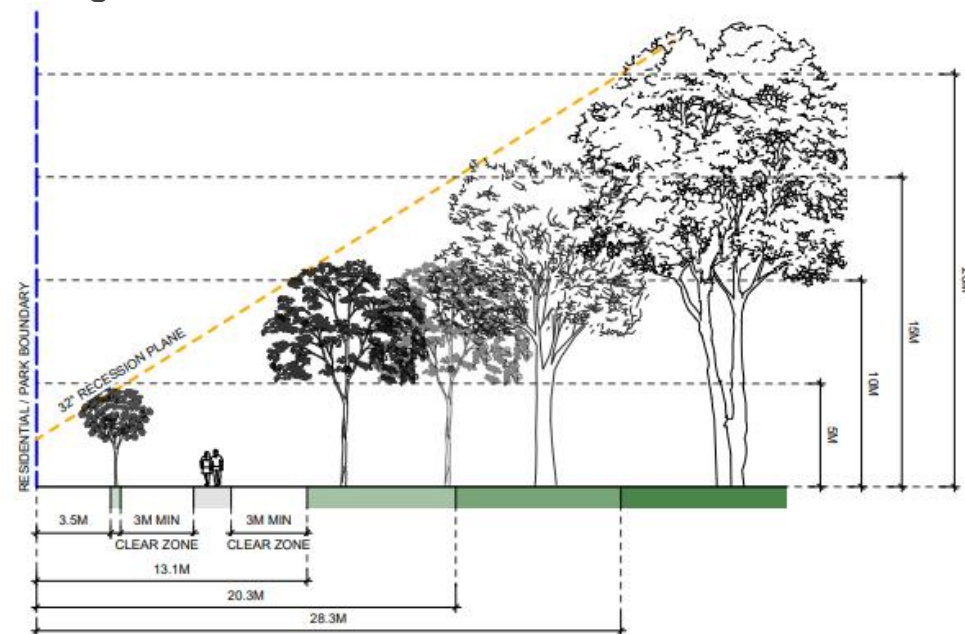
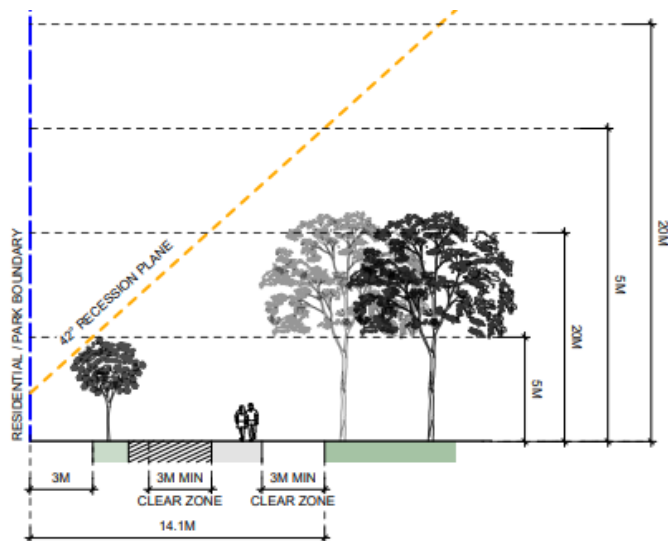
Filter out pollutants, and turn CO² into O²



Provide a canopy corridor for native birds and insects to travel across the city.

Design considerations

- Adherence to recession planes
- Creating off-sets from paths to avoid damage

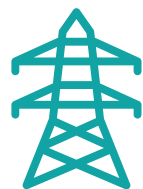


Design considerations

Right location, right type, right function



Existing use of
the spaces



Overground &
underground
services



Future plans for
the park or
reserve



Location of
waterways in
the park or
reserve



Distribution of
nearby
indigenous
forests

Tree size when planted



Urban Forest Planting Programme – Hansen Park

12 December
2025

Hansen Park consultation

- Open from 8 May – 26 May
- Flyers delivered to bordering properties
- Signage installed in the park with a QR code to the tree planting consultation site
- 328 views of the consultation page
- 41 submissions
 - 16 supported
 - 15 somewhat supported
 - 6 do not support
 - 4 unsure/ don't know

Planned tree planting areas

Swipe the slider from left to right to see the existing trees and where we plan to plant:



Hansen Park planting plan



Current park planting

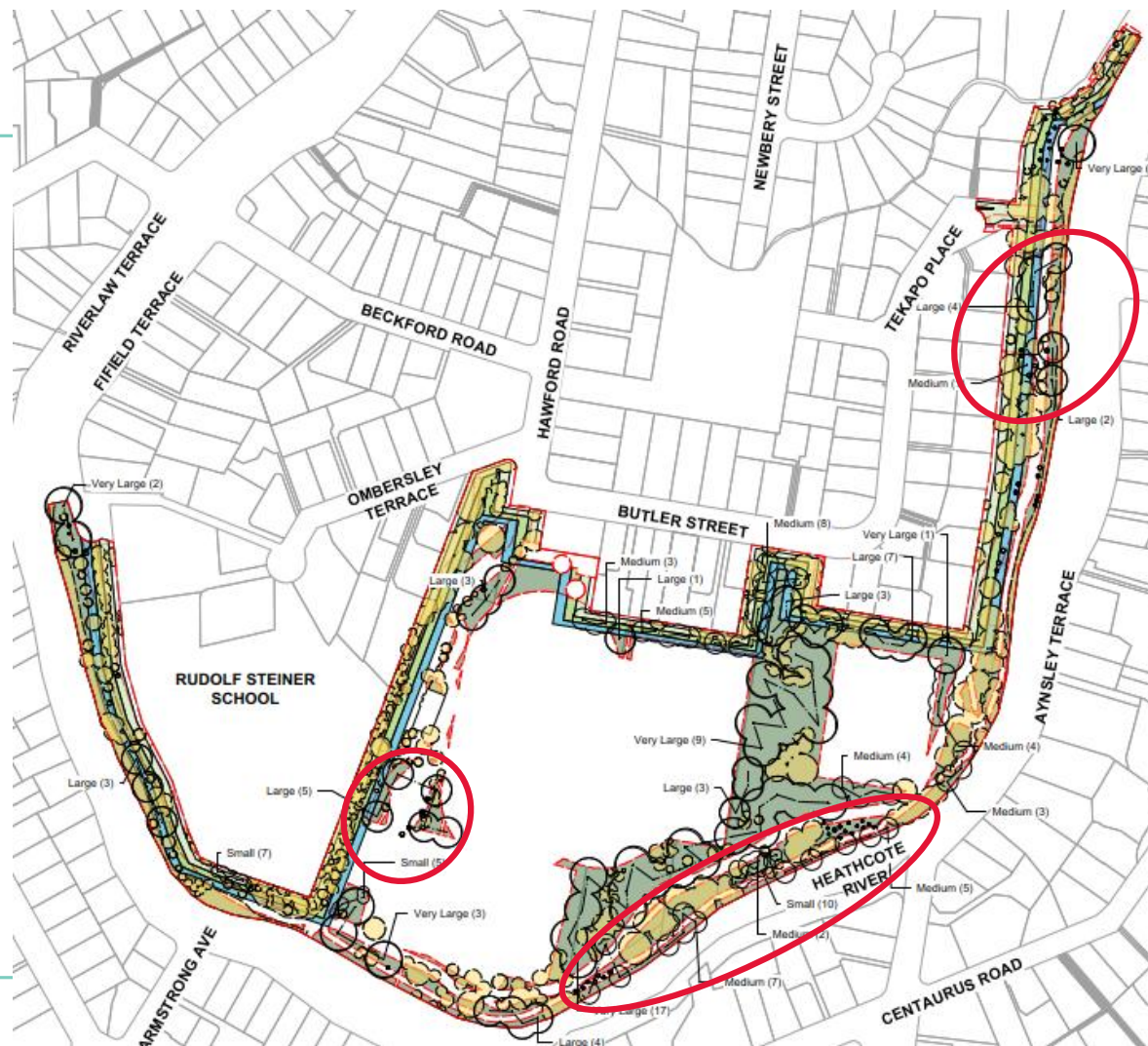


Proposed additional planting

Final Plan

- 130 new trees proposed.
- 32% canopy cover.
- Changes from feedback ○
 - Trees added near playground.
 - Tree size behind property reduced.
 - Riparian planting along side river.

Urban Forest Planting Programme – Hansen Park



Next steps

- If approved, staff will order trees for this planting season.
- Planting will begin in 2027 planting season and will be completed by the Councils internal tree planting team.
- Community planting days may also be utilised to assist with planting.

