

**Information Session/Workshop –
Waitai Coastal-Burwood-Linwood Community Board
NOTES ATTACHMENTS**

Date: Monday 8 December 2025
Time: 3.49 pm
Venue: Boardroom, Corner Beresford and Union Streets,
New Brighton

TABLE OF CONTENTS NGĀ IHIRANGI	PAGE
2. Bromley Roads Package 2 - Project Update	
A. Bromley Roads Package 2 - Project Update.....	3

Bromley Roads update

Ann Tomlinson – Project Manager

Tom Williams – Senior Traffic Engineer

Amy Rice – Engagement Advisor

8 December 2025

Process to date



Bromley Transport Action Plan developed following community engagement



CERF programme, projects approved for Bromley Roads



CERF programme cancelled following change in government – no implementation



Bromley Roads 1 projects completed around Bromley School and Bromley Community Centre



Further funding approved in 2025/2026 Annual Plan - \$5m



Bromley Roads 2 – continuing work done to date

Bromley Roads 1

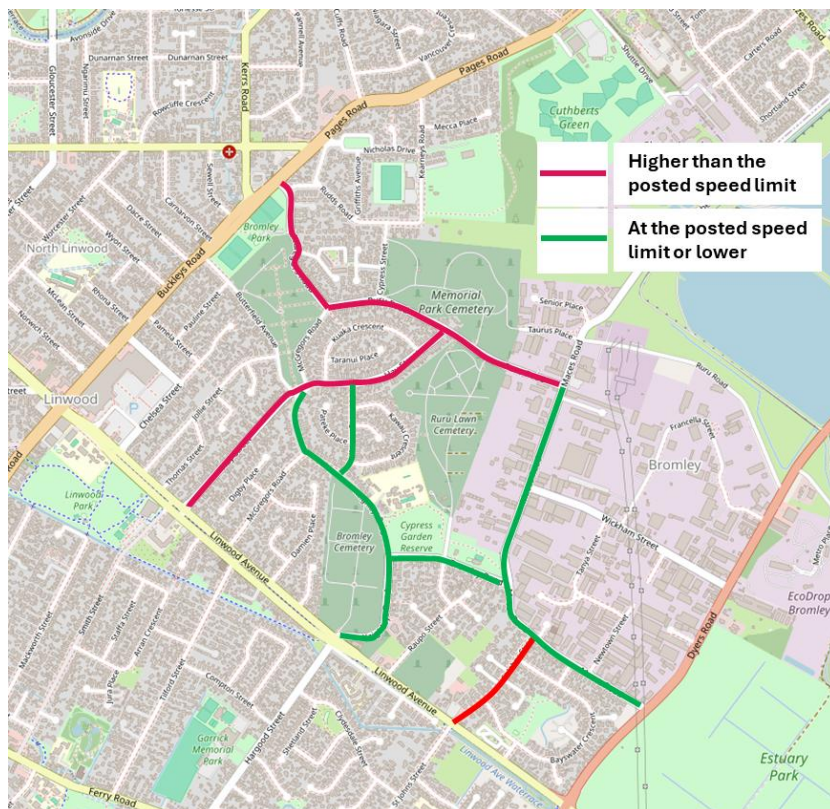
Bromley Road



Keighleys Road



Post construction results (speed)



Post-construction monitoring identified a decrease in traffic speeds on:

- Keighleys Road
- Korora Street
- Bromley Road

Vehicle speeds on Hay Street, Ruru Road, and St Johns Street are still higher than the posted speed limit (30 km/h).

Average vehicle speeds on Maces Road are lower than the posted speed limit.

Post construction results (traffic volumes)



Post construction monitoring identified an increase in traffic volumes on:

- Hay Street (200 vpd)
- Korora Street (250 vpd)
- St Johns Street (60 vpd)

No change in the number of vehicles travelling on Keighleys Road/Bromley Road.

Traffic volumes on these roads remain higher than appropriate for a collector road.

Bromley Roads 2

Funding



FY 26

\$1,000,000



FY 27

\$4,000,000



\$1.2m of works to be delivered under the existing CERF contract with Isaac Construction Ltd – quick wins



Remainder tendered and delivered alongside Hay Street street renewal project

Proposed “quick wins”

The following has informed the proposed quick wins:

- Identified by the community through previous engagement and included in the **Bromley Transport Action Plan**
- Aligns with recommendations for the Bromley community from the **Weaving the East** report
- CERF Bromley Roads project
- Scheme designs previously approved by Council as part of the CERF programme – *Community Board informed throughout the wider Bromley engagement process prior to identification of CERF sites*
- Other works proposed as quick wins over and above CERF approvals

Quick wins – stage 1 (January-February 2026)

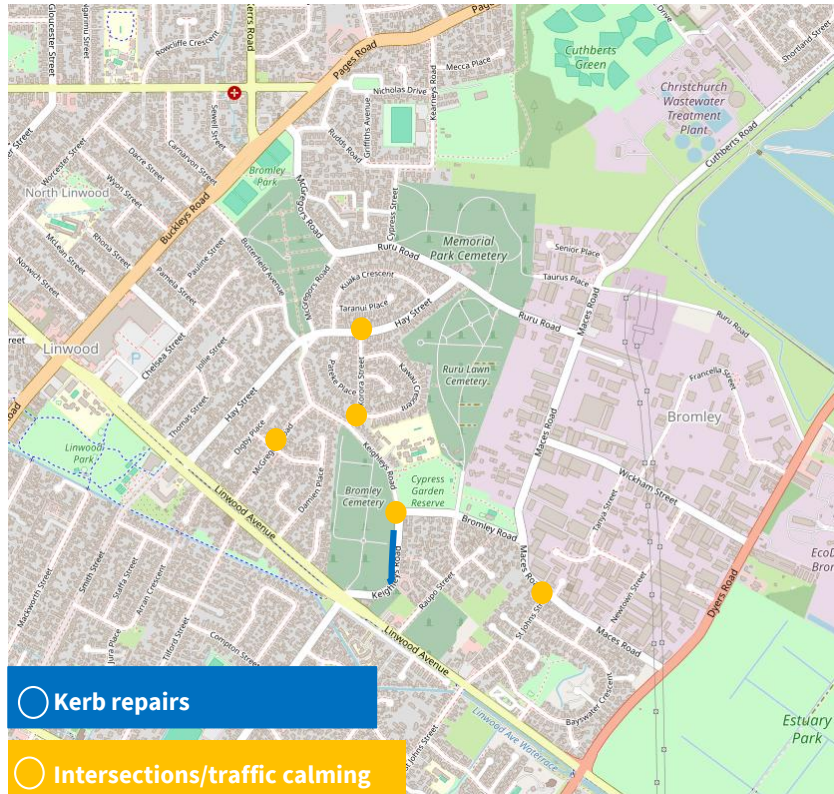


Speed Gateway signage

- Updated signage to reinforce the change in speed environment for vehicles turning into the area from the arterial roads



Quick wins – stage 2 (March-May 2026)



Intersection narrowing

- Discourages rat running – focused on areas of concern highlighted in the post-construction monitoring

Kerb repairs and landscaping

- This will help visually narrow this section of Keighleys Road – will require engagement and Community Board approval

St Johns Street

- Investigations to discourage rat running and heavy vehicle movements – will require engagement and Community Board approval

Engagement approach

We've already heard lots from this community about road safety issues. Going forward we'll continue to:

- Work with the Bromley Residents' Working Group
- Utilise the Bromley Community Centre
- Provide updates through the Bromley Transport Action Plan webpage, Bromley Community Association and Bromley School newsletter
- Engage with directly affected residents on projects

Next steps



Community Board update and support to progress “quick wins” to construction early 2026



Ongoing engagement and Community Board approval for remaining projects

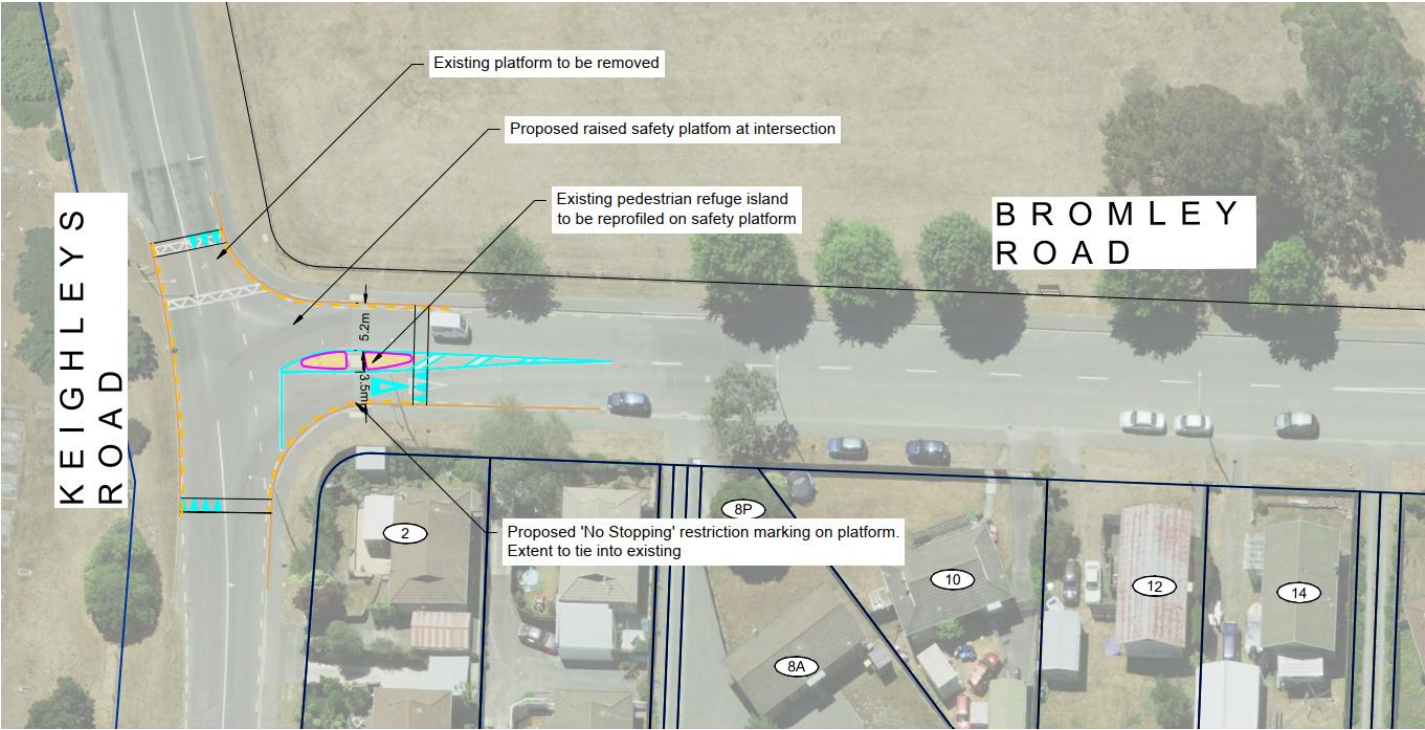


Tender as part of Hay Street street renewal package

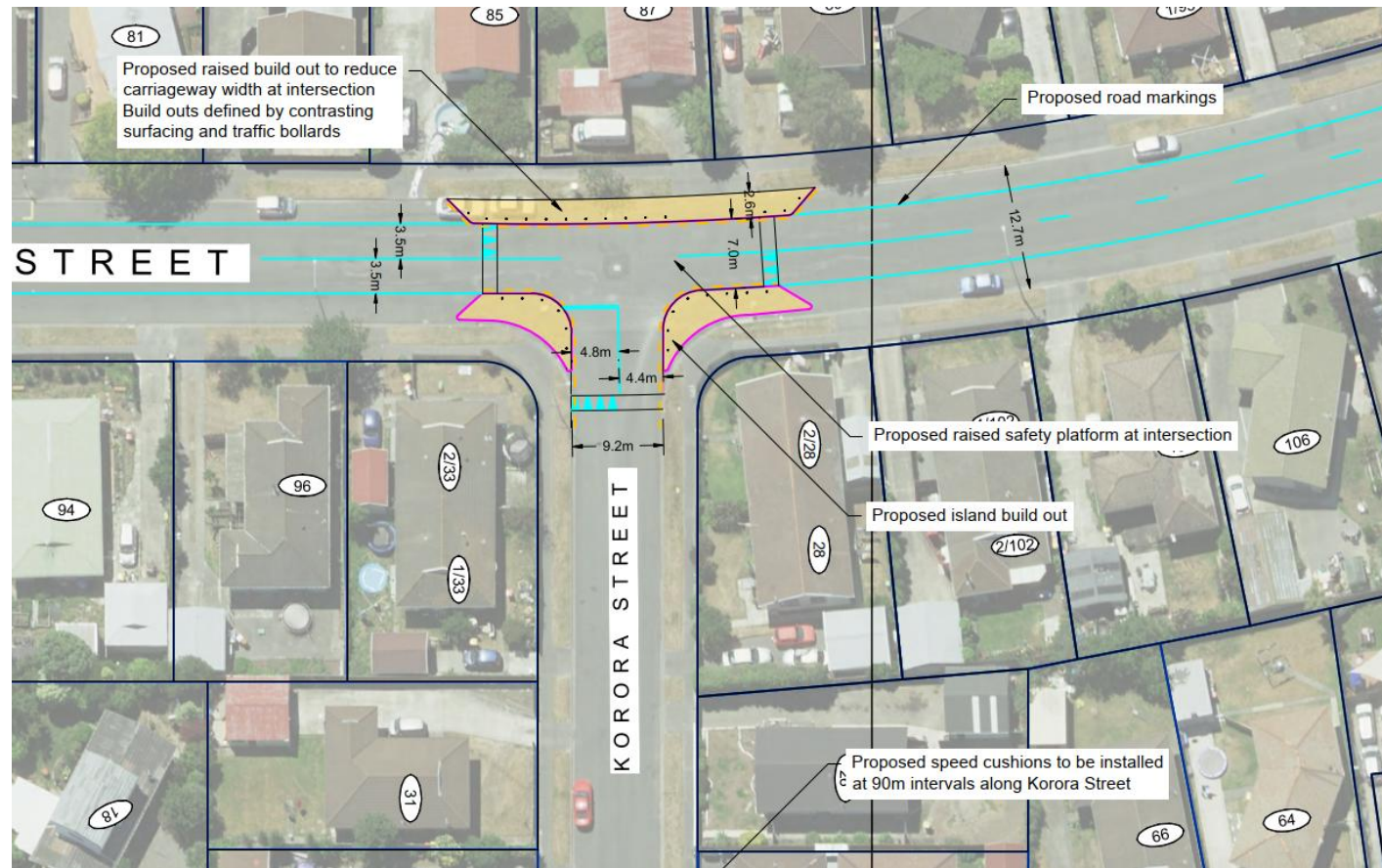


Construction begins late 2026

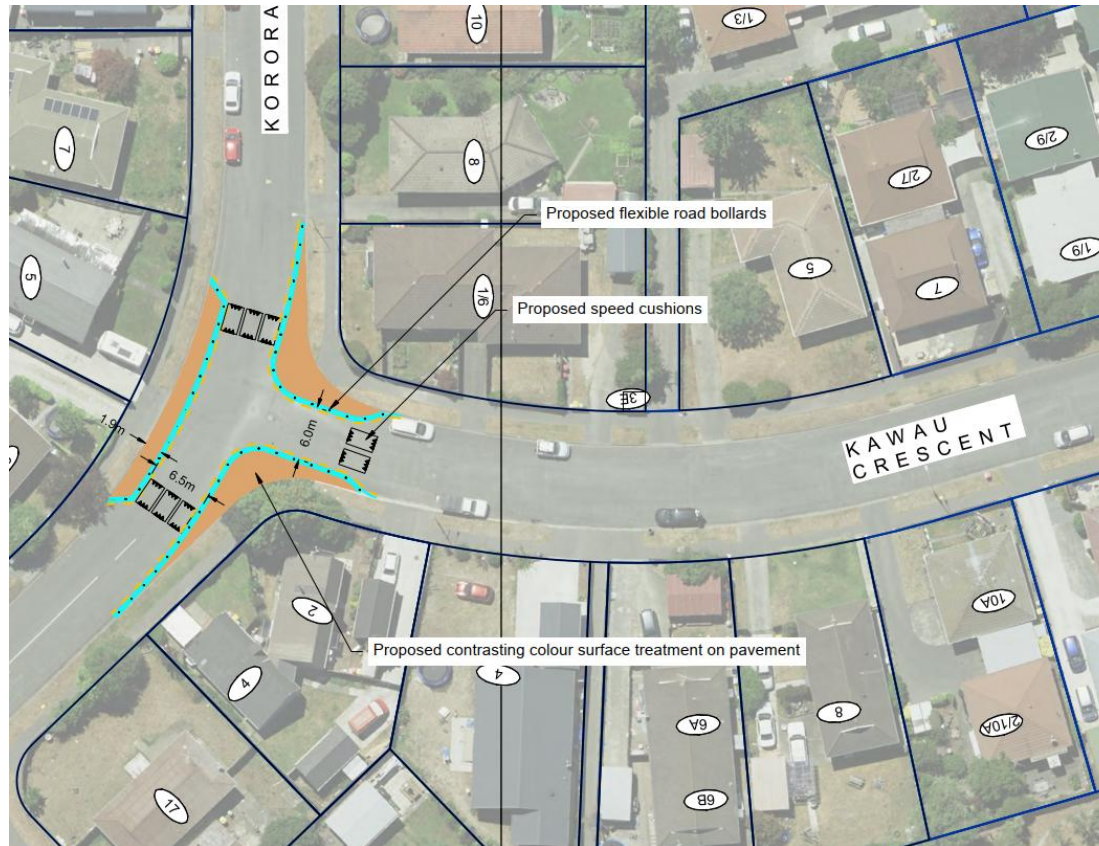




22 February 2024



22 February 2024



22 February 2024

Street		Pre Construction		Post Construction		Change	
		Vehicles per day	%HCV	Vehicles per day	%HCV	Vehicles per day	%HCV
Hay	Linwood Ave to McGregors	2,330	6.2%	2,543	4.3%	+213 (increase)	-2.0%
Hay	McGregors to Ruru	1,466	8.9%	1,394	6.3%	-72 (decrease)	-2.6%
Keighleys	Linwood Ave to Bromley	4,764	12.7%	4,752	12.3%	-12 (no change)	0%
Keighleys	Bromley to Korora	1,740	4%	1,428	2.6%	-312 (decrease)	-1.4%
Keighleys	Korora to McGregors	1,308	3.8%	1,048	3.8%	-260 (decrease)	0%
Bromley	Raymond to Maces	4,051	13.1%	3,795	14.2%	-256 (decrease)	+1%
Maces	Woburn to St Johns	2,403	20.2%	2,431	18.1%	+28 (increase)	-2%
Korora	Keighleys to Hay	1,155	3.5%	1,410	2.9%	+255 (increase)	0%
St Johns	Bayswater to Maces	1,586	3.4%	1,643	5%	+57 (increase)	+1.8%

Volumes	Type	Recorded volume	Typical volume
Korora Street	Local Road	1,410 vpd	Less than 1,500 vpd
Keighleys Road	Local Road	4,752 vpd	Less than 1,500 vpd
Bromley Road	Local Road	3,795 vpd	Less than 1,500 vpd
St John Street	Local Road	1,586 vpd	Less than 1,500 vpd
Hay Street	Collector	2,543 vpd	Up to 6,000 vpd

Street		Direction	Pre construction speed		Post construction speed		Change in speed	
			Mean	85 th	Mean	85 th	Mean	85 th
Hay Street	Linwood to McGregors	Eastbound	47 km/h	54 km/h	47 km/h	54 km/h	No change	No change
		Westbound	47 km/h	55 km/h	47 km/h	54 km/h	No change	No change
Hay Street	McGregors to Ruru	Northbound	44 km/h	51 km/h	44 km/h	51 km/h	No change	No change
		Southbound	42 km/h	50 km/h	43 km/h	50 km/h	No change	No change
Keighleys Road	Linwood Ave to Bromley	Northbound	47 km/h	53 km/h	24 km/h	29 km/h	-23 km/h	-24 km/h
		Southbound	47 km/h	54 km/h	27 km/h	33 km/h	-19 km/h	-21 km/h
Keighleys Road	Bromley to Korora	Northbound	44 km/h	52 km/h	33 km/h	40 km/h	-10 km/h	-12 km/h
		Southbound	39 km/h	48 km/h	31 km/h	38 km/h	- 8 km/h	-11 km/h
Keighleys Road	Korora to McGregors	Northbound	41 km/h	47 km/h	33 km/h	39 km/h	- 8 km/h	- 9 km/h
		Southbound	40 km/h	46 km/h	32 km/h	38 km/h	- 7 km/h	- 9 km/h
Bromley Road	Raymond to Maces	Eastbound	45 km/h	52 km/h	36 km/h	41 km/h	- 9 km/h	- 10 km/h
		Westbound	45 km/h	51 km/h	34 km/h	39 km/h	- 11 km/h	- 12 km/h
Maces Road	Woburn to St Johns	Northbound	45 km/h	53 km/h	45 km/h	53 km/h	No change	No change
		Southbound	46 km/h	54 km/h	44 km/h	52 km/h	No change	No change
Korora Street	Keighleys to Hay	Northbound	37 km/h	47 km/h	37 km/h	47 km/h	No change	No change
		Southbound	37 km/h	46 km/h	36 km/h	45 km/h	No change	No change
St Johns	Bayswater to Maces	Northbound	43 km/h	50 km/h	45 km/h	53 km/h	No change	No change
		Southbound	42 km/h	49 km/h	44 km/h	52 km/h	No change	No change