
Workshop - Council

NOTES ATTACHMENTS

Date:

Time:

Venue:

Tuesday 25 November 2025

10:00 am

Camellia Chambers, Level 2, Civic Offices,
53 Hereford Street, Christchurch

TABLE OF CONTENTS NGĀ IHIRANGI	PAGE
2. Greater Christchurch Partnership update	
A. Presentation - GCP presentation - Open 25 November 2025	3



**Greater Christchurch
Partnership**

Te Tira Tū Tahi
One Group, Standing Together

Greater Christchurch Partnership

*Strategically managing growth in Canterbury's largest
urban area*

Christchurch City Council
25 November 2025

Welcome and purpose

- ❖ **Why it exists** – its purpose and shared vision
- ❖ **What it does** – key functions and strategic priorities
- ❖ **How it works** – governance, structure, and collaboration
- ❖ **What it has achieved** – milestones and impact
- ❖ **What's happening now** – current work programme and focus areas

*One group,
standing together
for Greater
Christchurch.*

The Greater Christchurch Partnership – Our why

Purpose: To take a collaborative approach to address strategic challenges and opportunities for Greater Christchurch.

Local government, mana whenua and government agencies working collaboratively.

21 years of partnership, working collaboratively for Greater Christchurch since 2004.

Shared recognition of challenges and opportunities facing Greater Christchurch that transcend political boundaries and functions.



***One group,
standing together
for Greater
Christchurch.***



82% of the region's population lives in Greater Christchurch.

The Greater Christchurch Partnership – What we do

Collective wellbeing and strategic alignment

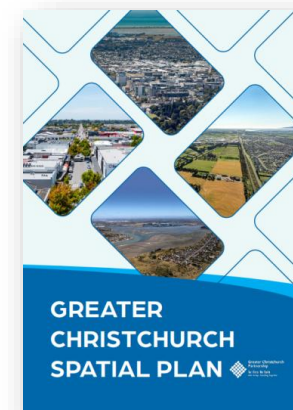
- Develop and implement strategies that support intergenerational wellbeing across Greater Christchurch.
- Deliver a joint work programme aligned with shared strategies.
- Advocate collectively to central government on sub-regional priorities.

Collaborative action on key issues

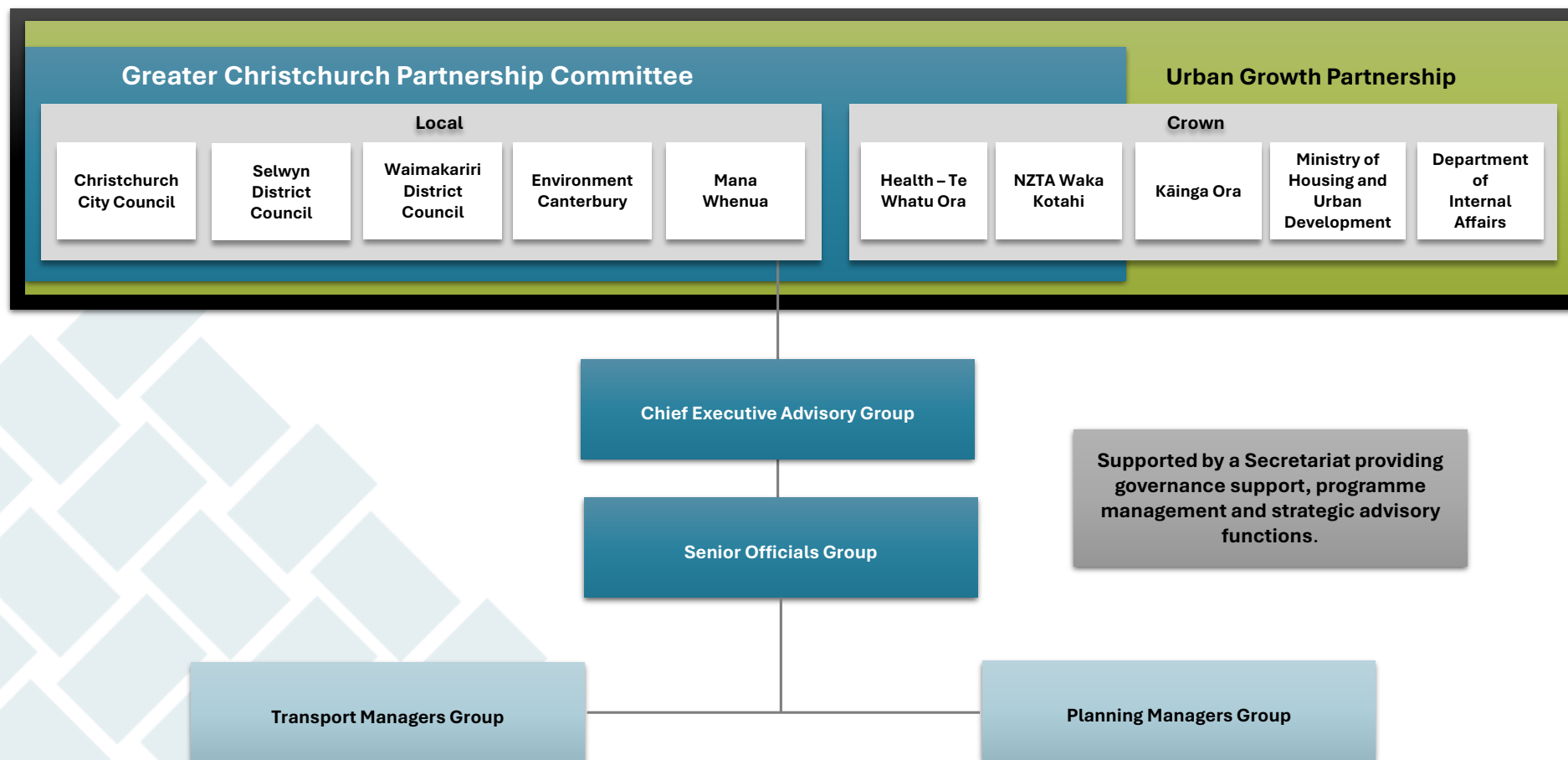
- Partner on specific challenges and emerging opportunities.
- Coordinate strategic transport planning and delivery functions.

Urban Growth Priorities

- Create a well-functioning, sustainable urban environment by prioritising:
 - Transport Decarbonisation – Shift to low-emission, sustainable transport systems.
 - Climate Resilience – Strengthen resilience to natural hazards and climate impacts.
 - Housing Acceleration – Enable the delivery of quality, affordable housing at pace.
 - Equitable Access – Improve access to jobs, education, and essential services.

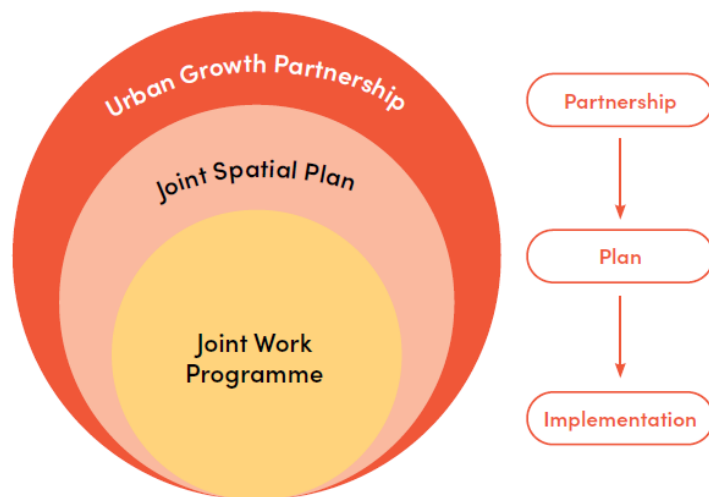


How the Partnership is structured

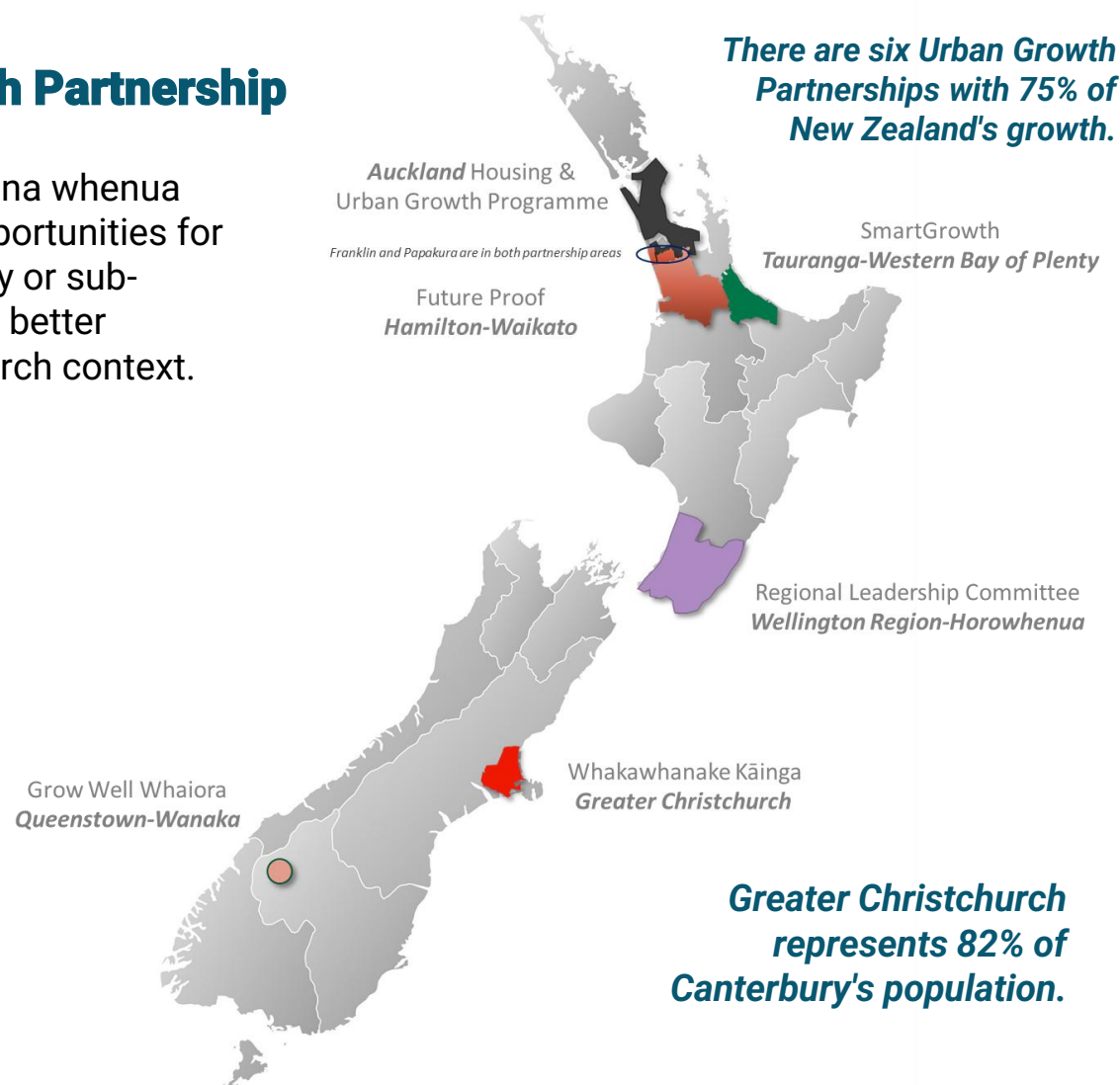


Greater Christchurch's Urban Growth Partnership

Central government, local government and mana whenua addressing strategic urban challenges and opportunities for Greater Christchurch which are cross boundary or sub-regionally important, and to enable partners to better understand the national and Greater Christchurch context.



Future Development Strategy is a legal requirement under the NPS Urban Development.



Huihui Mai engagement and public consultation

Of the more than 7,000 people who responded to the online survey:

86%

Agreed with the direction to focus growth around key urban and town centre and along public transport routes

68%

Identified improving the health of waterways as a top priority.

56%

Of people are open to higher density living, but it needs to be planned and designed to meet their different needs and provide quality of life for all people.

53%

Of people agree with the proposed MRT route. Agreement was much higher in suburbs along the MRT route (72%)

- **358** submissions were received.
- An Officers' Report was prepared to consider submissions and make recommendations to the Hearing Panel.
- Heard **86** submitters over six days across the three Districts.



The Greater Christchurch Spatial Plan

The Spatial Plan aims to deliver the aspirations of the communities of Greater Christchurch.

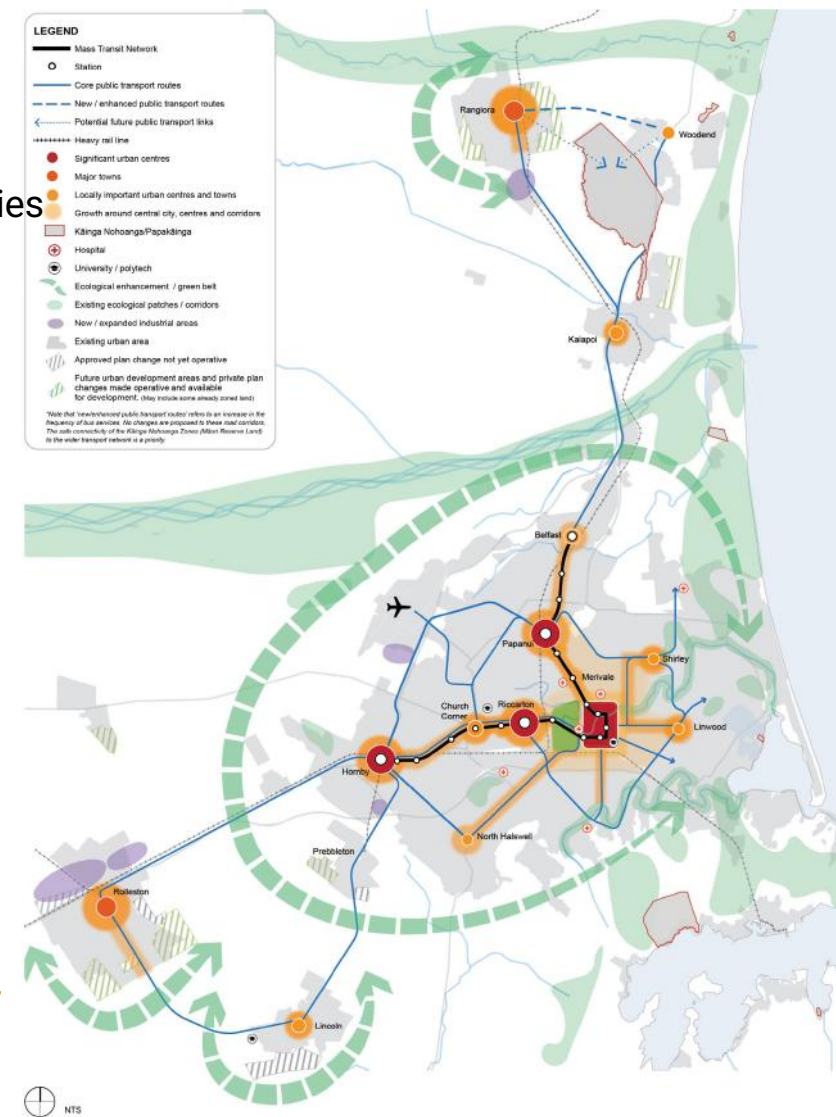
Unanimously endorsed by the Greater Christchurch Partnership Committee in February 2024.

In March 2024, all **partner Councils adopted** the Greater Christchurch Spatial Plan as their Future Development Strategy.

Acts as the blueprint for an urban form that accommodates a population potentially doubling to 1 million people.

Overarching directions:

- ❖ Targeted intensification in urban and town centres and along public transport corridors
- ❖ The prosperous development of kāinga nohoanga



Greater Christchurch Spatial Plan – Opportunities and alignment



1: Protect, restore and enhance historic heritage and sites and areas of significance to Māori, and provide for people's physical and spiritual connection to these places



2: Reduce and manage risks so that people and communities are resilient to the impact of natural hazards and climate change



3: Protect, restore and enhance the natural environment, with particular focus on te ao Māori, the enhancement of biodiversity, the connectivity between natural areas and accessibility for people



4: Enable diverse, quality and affordable housing in locations that support thriving neighbourhoods that provide for people's day-to-day needs



5: Provide space for businesses and the economy to prosper in a low carbon future



6: Prioritise sustainable and accessible transport choices to move people and goods in a way that significantly reduces greenhouse gas emissions and enables access to social, cultural and economic opportunities



What has the Greater Christchurch Partnership achieved?

Strategic Planning & Vision

2007: Established the **Urban Development Strategy (UDS)**

2020: Developed **Greater Christchurch 2050**, shaped by extensive community engagement.

2023: Huihui Mai engagement reinforced community priorities for the **Greater Christchurch Spatial Plan (GCSP)**.

2024: **Greater Christchurch Spatial Plan** endorsed and adopted by all partner councils as a 30-year blueprint for sustainable growth, provides a coordinated response to projected population growth and has been praised by central government as one of the best in New Zealand.

Current: Implementation Plan 2024–2027: Provides clear actions, costs, and milestones for delivering the GCSP.

Community Engagement and Involvement

Over **7,000 residents** engaged through Huihui Mai.

358 submissions received on the draft GCSP.

Youth engagement widely recognised and emphasised climate action, clean environment, and better transport.

Transport & Infrastructure

Enabled **government investment in motorways** through strategic alignment.

Supported **investment in PT Futures**, including planning for a **Mass Rapid Transit (MRT)** corridor.

Indicative Business Case completed for MRT recognised as a nationally significant infrastructure projects and evidence of the Partnership's capability to coordinate..

Endorsed the **Greater Christchurch Transport Plan (GCTP)** to guide future transport investment decisions across the region.



Achievements of the Greater Christchurch Partnership (continued)

Housing & Urban Growth

UDS enabled **fast-track planning post-earthquake**, accelerating recovery and development.

Guided **intensification and greenfield development** across the region and enabled a **joined-up response** to national planning requirements (NPS-UD and FDS).

2024: Joint Housing Action Plan: Endorsed and adopted by councils to address housing needs.

Supporting development of a mana whenua led **Kāinga Nohoanga Strategy** to reflect mana whenua aspirations.

Collaborative Governance

21years of partnership provides a **forum for partners** to raise and address regional issues.

Coordinates **submissions on legislation** impacting Greater Christchurch.

Formed the **Urban Growth Partnership** with central government.

Established a **reporting framework** for transparency and accountability, aligned to the requirements of the National Policy Statement on Urban Development.

Environmental Leadership

GCSP recognised the need for an integrated a **blue/green network** to protect biodiversity and support climate adaptation.

Planning reflects **mana whenua values**, including support for kāinga nohoanga development.



Operating environment for Greater Christchurch

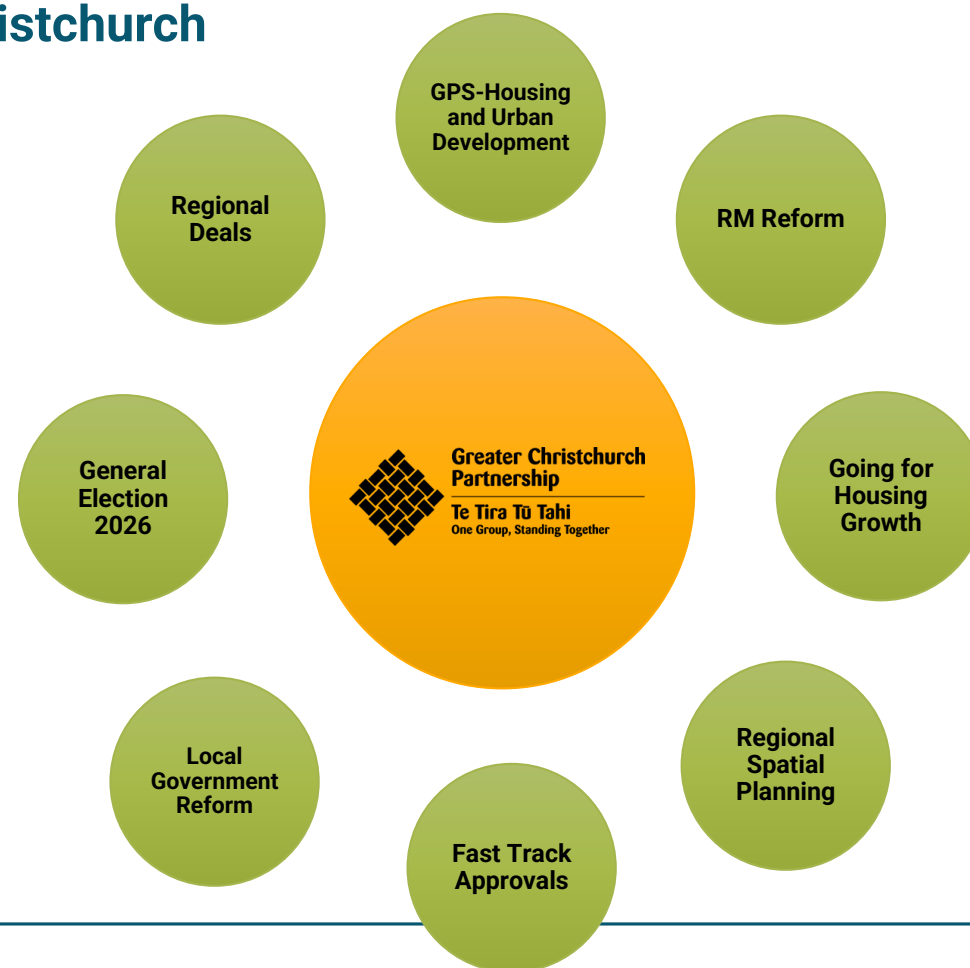
Councils are needing to be responsive to significant Government Policy Reforms

Government policies e.g. NPS-UD are to be implemented through a coordinated approach, given the extent of the urban areas.

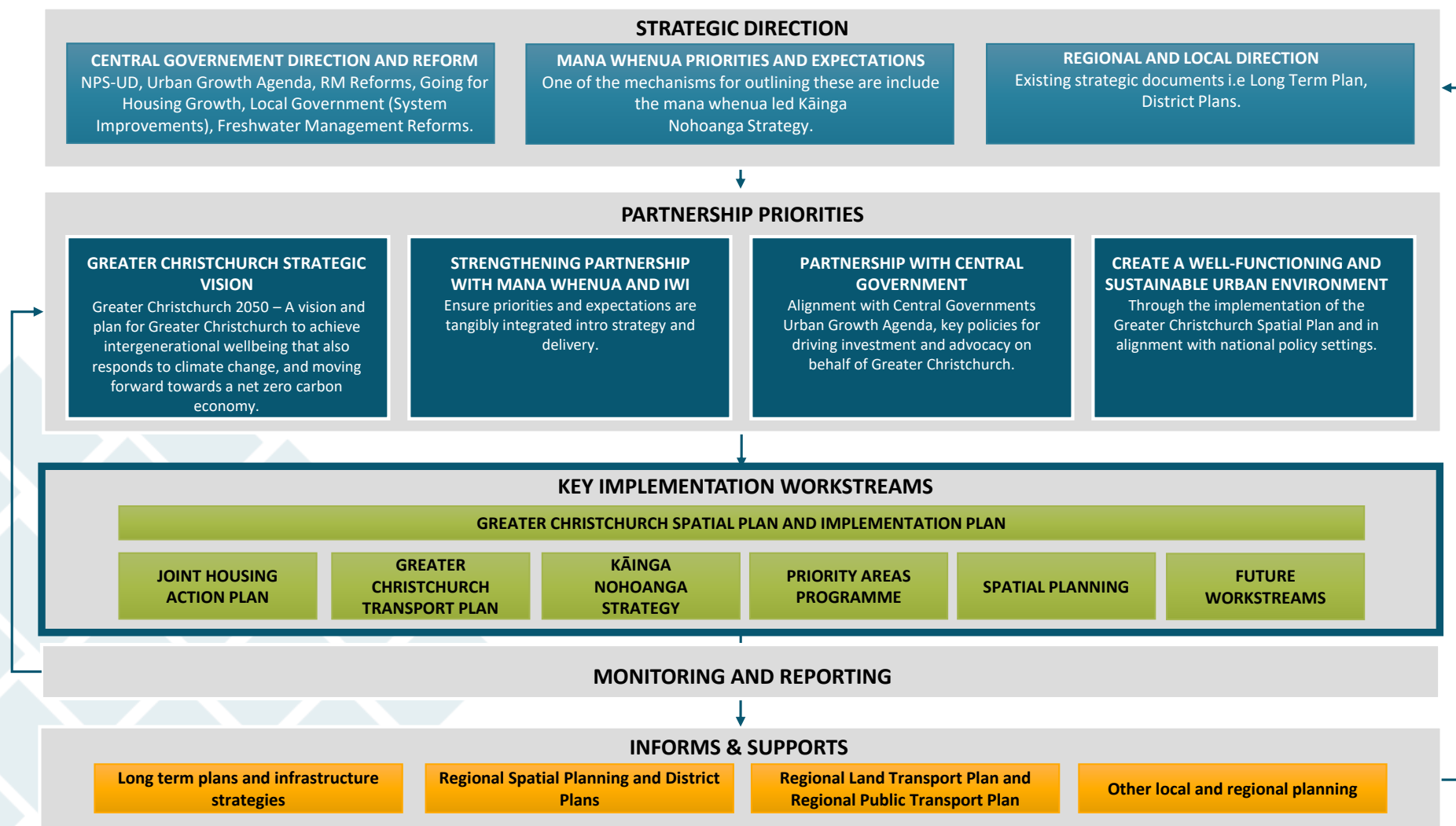
Greater Christchurch is the most cost-effective place to grow and invest.

Minister sees the UGP as key to delivering on these new systems and reforms.

Crown Partner involvement is important



Strategic framework and work programme



Greater Christchurch Partnership Independent Review

- ❖ In December 2024, the Committee endorsed the need for an independent review of the Partnership's form, function, and strategic focus to ensure it remains fit for purpose into the future.
- ❖ MartinJenkins were engaged to undertake the review. They delivered:
 - ❖ An Insights Report
 - ❖ An Independent Review Report, which includes:
 - ❖ functional model options for change for consideration
 - ❖ 18 recommendations across three phased timeframes
- ❖ Implementation workshops led by MartinJenkins are proposed for December 2025, February 2026 workshop and the March 2026 Committee meetings.
- ❖ The March 2026 meeting will be a key decision point for selecting and implementing structural options.

Key decisions ahead (Dec 2025 – Jun 2026)

The Committee will be asked to make strategic decisions on the future direction of the Partnership, including:

- ❖ Endorsing GC2050 as the long-term strategic vision for the Partnership
- ❖ Setting strategic priorities for the next 3 years
- ❖ Reviewing the future of the Greater Christchurch Partnership – functions, workstreams, and structure
- ❖ Endorsing Phase 2 actions of the Joint Housing Action Plan
- ❖ Endorsing refreshed Housing & Business Capacity Assessments

Council's involvement in the GCP

Council's involvement in the Greater Christchurch Partnership (GCP) Involves:

- ❖ **Resourcing:** Council's participation and input occurs at multiple levels including operational, executive and governance
- ❖ **Funding:** Council contributes funding towards the GCP secretariat and key initiatives, maximising impact and value for money through cost-sharing.
- ❖ **Joint responsibility:** Council shares responsibility for delivering on agreed outcomes and priorities for the GCP, including the implementation of agreed work programme priorities.
- ❖ **Influence and Advocacy:** Has enabled a joined up approach between Councils to advocate at national level for funding, investment, and policy support e.g. submissions.

Relationship of Council activities to GCP programme

- ❖ **Spatial Planning:** Through the Ōtautahi Christchurch Planning Programme and local area planning (e.g. Hornby), Council is implementing the GCSP and its key moves, including collaboration with NZTA on State Highway access and other Government partners.
- ❖ **Intensification:** Additional areas rezoned in September 2025 generally aligns with the urban form defined through the GCSP
- ❖ **Joint Housing Action Plan:** Council is partnering with GCP members to progress implementation of the Joint Housing Action Plan, helping to address Christchurch's housing and affordability needs

Ngā mihi, He pātai?



Greater Christchurch Partnership:

Web: <https://www.greaterchristchurch.org.nz>

Email: secretariat@greaterchristchurch.org.nz