

---

## Waimāero

### Fendalton-Waimairi-Harewood Community Board

### SUPPLEMENTARY AGENDA

---

#### Notice of Meeting Te Pānui o te Hui:

An ordinary meeting of the Waimāero Fendalton-Waimairi-Harewood Community Board will be held on:

**Date:** Monday 8 September 2025  
**Time:** 4.30 pm  
**Venue:** Boardroom, Fendalton Service Centre,  
Corner Jeffreys and Clyde Roads, Fendalton

---

#### Membership Ngā Mema

Chairperson	Jason Middlemiss
Deputy Chairperson	Bridget Williams
Members	David Cartwright
	Linda Chen
	James Gough
	Aaron Keown
	Sam MacDonald
	Nicola McCormick

---

5 September 2025

#### Principal Advisor

Maryanne Lomax  
Manager Community Governance  
Tel: 941 6730  
[maryanne.lomax@ccc.govt.nz](mailto:maryanne.lomax@ccc.govt.nz)

#### Meeting Advisor

Aidan Kimberley  
Community Board Advisor  
Tel: 941 6566  
[aidan.kimberley@ccc.govt.nz](mailto:aidan.kimberley@ccc.govt.nz)  
**Website:** [www.ccc.govt.nz](http://www.ccc.govt.nz)

**Note:** The reports contained within this agenda are for consideration and should not be construed as Council policy unless and until adopted. If you require further information relating to any reports, please contact the person named on the report.

**To watch the meeting live, or a recording after the meeting date, go to:**

<https://www.youtube.com/@fendaltonwaimairiharewoodc6878/streams>

**To view copies of Agendas and Minutes, go to:**

<https://www.ccc.govt.nz/the-council/meetings-agendas-and-minutes/>





Part A	Matters Requiring a Council Decision
Part B	Reports for Information
Part C	Decisions Under Delegation

TABLE OF CONTENTS NGĀ IHIRANGI

C	19.	Resolution to Include Supplementary Reports Te Whakataunga Whakauru Pūrongo āpiti .....	4
C	20.	Halifax Reserve play space renewal and Urban Forest plan .....	5

---

## 19. Resolution to Include Supplementary Reports Te Whakataunga Whakauru Pūrongo āpiti

---

### 1. Background Te Horopaki

- 1.1 Approval is sought to submit the following report to the Waimāero Fendalton-Waimairi-Harewood Community Board meeting on 08 September 2025:
  20. Halifax Reserve play space renewal and Urban Forest plan
- 1.2 The reason, in terms of section 46A(7) of the Local Government Official Information and Meetings Act 1987, why the report was not included on the main agenda is that it was not available at the time the agenda was prepared.
- 1.3 It is appropriate that the Waimāero Fendalton-Waimairi-Harewood Community Board receive the report at the current meeting.

### 2. Recommendation Te Tūtohu

- 2.1 That the report be received and considered at the Waimāero Fendalton-Waimairi-Harewood Community Board meeting on 08 September 2025.
  20. Halifax Reserve play space renewal and Urban Forest plan

## 20. Halifax Reserve play space renewal and Urban Forest plan

Reference Te Tohutoro: 25/1800839

Responsible Officer(s) Te Pou Matua: Holly Whitaker (Project Manager Community Parks) and Toby Chapman (Urban Forest Manager)

Accountable ELT Member Pouwhakarae: Andrew Rutledge, General Manager Citizens and Community

### 1. Purpose and Origin of the Report Te Pūtake Pūrongo

- 1.1 The purpose of this report is to request the Waimāero Fendalton- Waimari-Harewood Community Board approve:
  - 1.1.1 The concept plan for the renewal of the play space at Halifax Reserve
  - 1.1.2 The tree planting plan for Halifax Reserve using the attached tree planting plan.
- 1.2 The report is in response to the adoption of the Urban Forest Plan which seeks to increase canopy cover across the city by 40%.

### 2. Officer Recommendations Ngā Tūtohu

That the Waimāero Fendalton-Waimairi-Harewood Community Board:

1. Receives the information in the Halifax Reserve play space renewal and Urban Forest plan Report.
2. Notes that the decisions in this report are of low significance in relation to the [Christchurch City Council's Significance and Engagement Policy 2019](#). The level of significance was determined by the low number of people affected and the low level of impact on Council's functions.
3. Approves the Halifax Reserve play space renewal plan set out in attachment A to the report in the agenda.
4. Approves the planting of trees in Halifax Reserve in alignment with the planting plan described in section 4 of the report in the agenda.

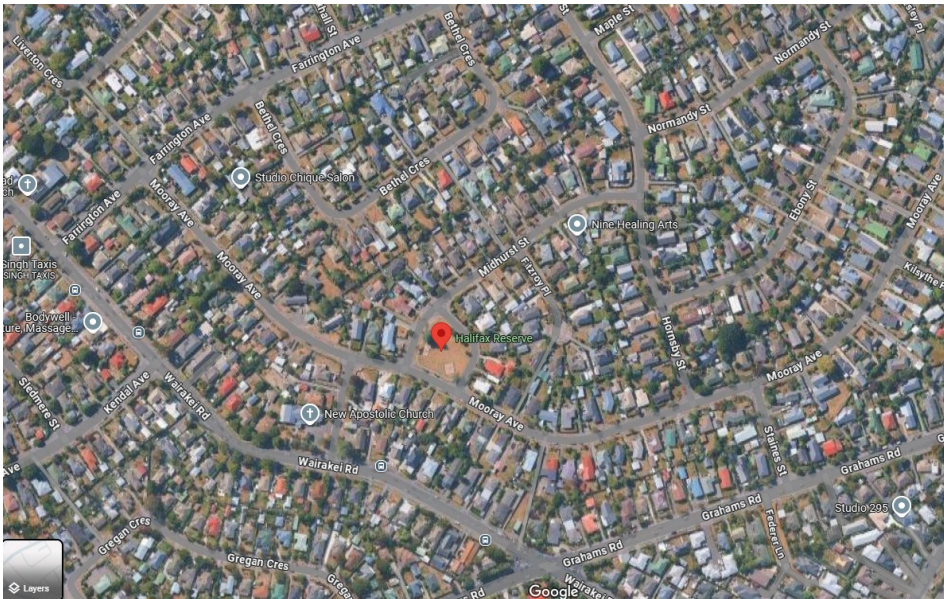
### 3. Executive Summary Te Whakarāpopoto Matua

- 3.1 The renewal of the play space forms part of the Community Parks Planned Play Space Renewal Programme. This play space is being renewed based on its age and condition.
- 3.2 The play space is being renewed 'like-for-like', meaning a similar number of play elements will be maintained, whilst also taking into account feedback from community consultation. The design will ensure that today's NZ Play Safety Standards are being met as well as taking into consideration any basic updates to levels of service.

3.3 Photo of current play space at Halifax Reserve:



3.4 Halifax Reserve is located in Bishopdale, surrounded by Mooray Avenue, Halifax Lane and Midhurst Street that form the boundaries.



3.5 Community consultation was considered, and the renewed play space includes the following:

- 3.5.1 A play space that provides enjoyable recreational features for general park users. Minimal feedback was received regarding the play space renewal through the two consultation periods and therefore Parks staff have attempted to create a space for users who may not actively 'play' to also enjoy. The new walkway from the corner of Halifax Lane and Midhurst street will provide an accessible pathway, via a bridge to the 'low fort platform' and if budget allows will connect to an accessible picnic table.
- 3.5.2 Two forts that are designed to resemble tree houses, connecting the play space to the existing established cypress tree. In the initial consultation, two of the respondents requested a play space that is suitable for younger children, one requested a play fort and another requested nature play. The forts have been chosen as staff feel they will appeal to younger children who generally enjoy imaginative play and 'hiding places'. CPTED was also considered, and due to the excellent sight lines into the Reserve, forts were deemed appropriate.
- 3.5.3 Climbing elements in the form of balance ropes, climbing posts, ladder and natural stepping logs. These are suitable for a range of ages as hand holds are included so younger children can participate.
- 3.5.4 A double slide from the accessible platform, creating play opportunities for multiple children.



- 3.5.5 A basket swing, which provides play options for multiple children at once and is suitable for infants to adults, due to the support it provides.



#### 4. Background/Context Te Horopaki

- 4.1 Consultation was first undertaken through the Korero Mai process in late October 2024. [Halifax Reserve play space renewal | Kōrero mai | Let's talk](#). Four responses were received, please see attachment B.
- 4.2 The integration of nature play, forts and equipment suitable for younger children was considered in the design stage. Space and noise limitations meant the requested basketball court was not an option.
- 4.3 Budget restraints and lack of space prohibited our ability to include a scooter track.

- 4.4 The Parks Unit then consulted on the tree planting plan in Halifax Reserve and therefore the community were then given a second opportunity to give feedback on the play space, this time with the inclusion of the concept plan.
- 4.5 The planting plan proposes to plant 5 new trees which will increase the canopy cover in Halifax Reserve from 17% to 56% once they reach maturity, in approximately 30 years.
- 4.6 The images below show the proposal for the planting and what modelling estimates it to look like once the trees have reached maturity:



Image one: Aerial view of the existing reserve.

Image two: Aerial view of the reserve with the proposed new trees included at maturity.

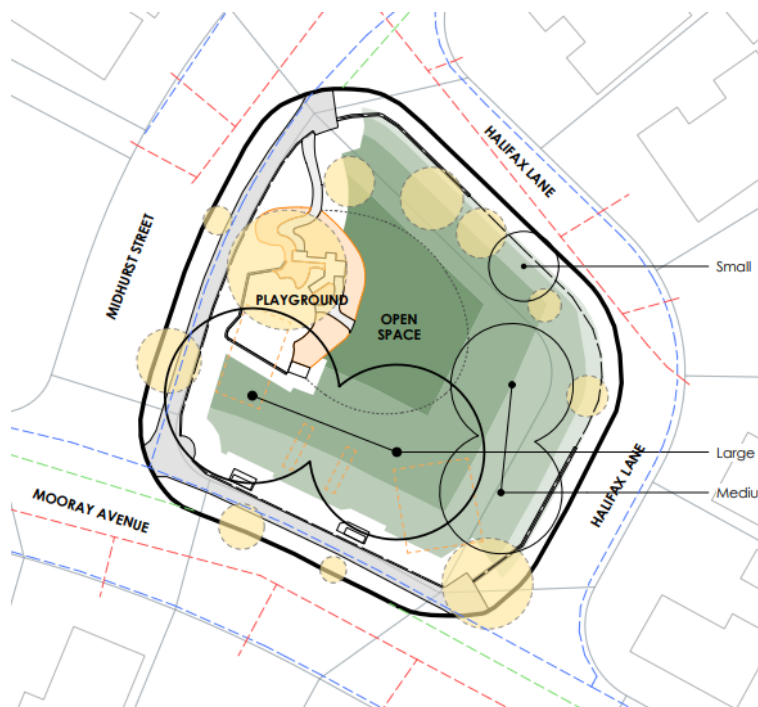


Image three: Aerial view of the new trees placement



- 4.7 Feedback received on the tree planting plan was mixed. Of the six that provided feedback three supported the plan, two somewhat supported the plan and one was unsure/did not know. Comments shared by those who somewhat supported the plan and were unsure stated concern that the trees would provide too much shade on nearby properties and make pathways slippery, could impede properties view into the park, could impede drivers view at the intersection of Midhurst Street and Mooray Avenue and requested use of low allergen plant species.
- 4.8 The plan has been developed using a recession plane to help reduce shading impact. While we cannot avoid shading all together, this model does assist in ensuring it is managed to the same extent as would occur if a resident's neighbour was constructing a new building.
- 4.9 Staff will be selecting a mix of deciduous and light canopy evergreen trees to assist in managing the amount of shade on neighbouring properties in winter. Trees will be lifted and widely spaced to retain views into the park area and ensure sight lines are maintained, and species will be low allergen.
- 4.10 Staff will be maintaining all trees once planted for the first seven years using our own in-house team. Maintenance will include watering, pruning and mulching. After seven years the trees will be inputted to our contracted maintenance program.
- 4.11 The following related memos/information were circulated to the meeting members:

Date	Subject
31/10/2024	Halifax Reserve play space renewal 24/1857002 25/180083925/881304

### Options Considered Ngā Kōwhiringa Whaiwhakaaro

- 4.12 The following reasonably practicable options were considered in this report:
- 4.12.1 The Community Board adopt the proposed concept plan for the play space renewal at Halifax Reserve and the tree planting plan.
- 4.12.2 The Community Board do not approve the concept plans and requests that staff consider an alternative design and re-consult with the community.
- 4.12.3 Remove play equipment from the Park and do not replace. Do not plant any more trees.

### Options Descriptions Ngā Kōwhiringa

- 4.13 **Preferred Option:** The Community Board adopt the proposed concept plans for the play space renewal and tree planting plan at Halifax Reserve.

#### 4.13.1 Option Advantages

- The community will receive a safe play space that offers increased play value, more age-appropriate equipment, and improved accessibility.
- Supports the Urban Forest Plan objectives and targets by increasing canopy cover in Halifax Reserve to 56% once trees reach maturity.
- Local community gain some of the many benefits trees provide.

#### 4.13.2 Option Disadvantages

- No additional changes to the concept plan can be made.
- Some may see the planting of trees presents a loss of open space.

4.14 **Option 2:**

4.14.1 **Option Description:** The Community Board does not approve the concept plans and requests that staff consider an alternative design and re-consults with the community.

4.14.2 **Option Advantages**

- The Community have the option to offer alternative suggestions to the proposed concept plans.

4.14.3 **Option Disadvantages**

- This option would impact the allocated budget as the new playground design and engagement costs would be funded from within the current budget. It is likely that this would impact the type of equipment we would be able to include in a revised plan.
- Dissatisfaction among the local community due to the delay.

4.15 **Option 3:** Remove play equipment from the Park and do not replace. Do not plant any more trees.

4.15.1 **Option Advantages**

- This would provide Council with a saving in capital and operating expenditure.
- Open space within the park would be retained.

4.15.2 **Option Disadvantages**

- The play equipment would be removed from the Park at the end of its life span resulting in no Council play provision in this area.
- The local area will be deprived of the benefits that trees provide.

## 5. Financial Implications Ngā Hīraunga Rauemi

### Capex/Opex Ngā Utu Whakahaere

	Recommended Option	Option 2 – reject and redevelop plan	Option 3 – do not approve
Cost to Implement	Allocated CAPEX budget \$125,000 for play space renewal  Tree planting \$2800	Allocated CAPEX budget \$125,000 for play space renewal  Tree planting \$0	Decommissioning of old assets, approximately \$15,000  Tree planting \$0
Maintenance/Ongoing Costs	Covered by existing maintenance budget  Tree planting Nil	Covered by existing maintenance budget  Tree planting NA	N/A  Tree planting NA
Funding Source	Community Parks Fixed Renewal Budget  Tree planting Better off funding budget	Community Parks Fixed Renewal Budget  Tree planting' NA	Community Parks Fixed Renewal Budget  Tree planting NA

Funding Availability	Yes  Tree planting Existing	Yes  Tree planting Existing	Yes  Tree planting NA
Impact on Rates	N/A	N/A	N/A

Planting will be funded through the Urban Forest Tree Planting program which is currently funded through the Better Off Fund.

## 6. Considerations Ngā Whai Whakaaro

### Risks and Mitigations Ngā Mōrearea me ngā Whakamātautau

- 6.1 Implementation costs of the play space renewal are based on anticipated product supply, installation, and wider construction costs. There is a risk that these costs could change due to product availability and supply. The final cost of construction will be confirmed during the tender phase. If costs escalate beyond the approved budget, staff will manage small shortfalls through minor design amendments. In this instance, the amount of nature play will be reduced if required. If there are major implications to the level of service, staff will discuss these with the Community Board before proceeding further with the project.
- 6.2 The availability of trees can be challenging. If not all trees and plants are available, staff will push planting out to 2026.

### Legal Considerations Ngā Hīraunga ā-Ture

- 6.3 As per the Christchurch City Council's Delegation Register, 9 August 2024, the Community Board has the delegation to;
  - 6.3.1 Approve the location of, and construction of, or alteration or addition to, any structure or area on parks and reserves provided the matter is within the policy and budget set by the Council. (Part D – Sub Part 1 – Community Boards – Pg 96)
  - 6.3.2 Under the Reserves Act, Community Boards have the delegation to “determine to plant, maintain and remove trees on reserves within the policy set by the Council”.
- 6.4 Other Legal Implications:
  - 6.4.1 There is no legal context, issue, or implication relevant to this decision.

### Strategy and Policy Considerations Te Whai Kaupapa here

- 6.5 The required decisions
  - 6.5.1 Align with the [Christchurch City Council's Strategic Framework](#) with a particular focus on a green, liveable city.
  - 6.5.2 Are assessed as low significance based on the Christchurch City Council's Significance and Engagement Policy. The level of significance was determined by assessing the impact the decision will have on the city which is low.
  - 6.5.3 Is consistent with Council's Plans and Policies. The planting plan forms a key component of the implementation of the Council's Urban Forest Plan.
- 6.6 This report supports the [Council's Long Term Plan \(2024 - 2034\)](#):
- 6.7 Parks, Heritage and Coastal Environment
  - 6.7.1 Activity: Parks and Foreshore
    - Level of Service: 6.8.5 Resident satisfaction with the overall availability of recreation facilities within the City's parks and foreshore network - >= 70%

- Level of Service: 6.8.2.1 Increasing tree canopy in Parks - A net increase in total number of trees is achieved (1:2 replacement policy), with a minimum of 50% of the trees being medium to very large species

6.8 Parks, Heritage and Coastal Environment

6.8.1 Activity: Parks and Foreshore

- Level of Service: 6.8.5 Resident satisfaction with the overall availability of recreation facilities within the City's parks and foreshore network -  $\geq 70\%$
- Level of Service: 6.8.2.1 Increasing tree canopy in Parks - A net increase in total number of trees is achieved (1:2 replacement policy), with a minimum of 50% of the trees being medium to very large species

**Community Impacts and Views Ngā Mariu ā-Hāpori**

- 6.9 Early engagement with park users on the play space renewal started in October 2024. A [Kōrero mai | Let's talk webpage](#) included a survey that asked for high level feedback on a play space renewal. Park visitors were asked for play opportunities and concerns / barriers they experienced coming to the park. Users were also asked whether they preferred renewing the play equipment or replacing the play equipment with a simple tree fort.
- 6.10 Consultation on the concept design and tree planting plan started on 17 June and ran until 7 July 2025.
- 6.11 Consultation details including links to the project information shared on the [Kōrero mai | Let's Talk webpage](#) were advertised via:
- 6.11.1 Flyer delivery to neighbouring properties
  - 6.11.2 Local community Facebook pages.
  - 6.11.3 Signage at the park
- 6.12 The [Kōrero mai | Let's Talk](#) page had 186 views throughout the consultation period.

**Summary of Submissions Ngā Tāpaetanga – play space renewal**

- 6.13 A submission was made by Spokes Canterbury and six individuals. [All submissions are available on our Kōrero mai webpage.](#)
- 6.14 Spokes Canterbury supported the play space renewal and requested secure bike parking to encourage families to actively travel to and from the play space.
- 6.15 Submitters were asked whether they thought we had the play space renewal plan right.
- 6.16 Most submitters thought we had the plan right (5, 71%) because the improved equipment provides more play opportunity for all ages.
- 6.17 Some submitters thought we had the plan somewhat right (2, 29%) for the following reasons:
- Feeling there is not enough space between the proposed play equipment.
  - Requesting more seating in the reserve.

**Summary of Submissions Ngā Tāpaetanga – tree planting plan**

- 6.18 Submissions were made by six individuals. [All submissions are available on our Kōrero mai webpage.](#)
- 6.19 Submitters were asked how important certain aspects were in the park, what aspects were concerning going forward with the park and whether they felt we got this tree planting plan right.



- 6.20 Three submitters felt we had the tree planting plan right, two submitters felt we had the plan somewhat right and one submitter didn't know / wasn't sure.
- 6.21 Submitters were asked to rate the importance of various aspects when increasing the tree cover in this park. The top aspects were: native trees (5), providing enough shade (5), climbable trees (5) and attracting birds and insects (5).
- 6.22 Submitters were asked whether they were concerned about various aspects when increasing the tree cover in this park. Submitters were able to select more than one concern. While most submitters had no concerns, two selected potential debris, one selected potential hazards and one selected loss of view.
- 6.23 Submitters were also invited to provide additional feedback. Comments shared by those who somewhat supported the plan and were unsure stated concern that the trees would provide too much shade on nearby properties and make pathways slippery, could impede properties view into the park, could impede drivers view at the intersection of Midhurst Street and Mooray Avenue and requested use of low allergen plant species.

### **Supplementary information**

- 6.24 A quick poll was conducted on the Let's Talk webpage to reduce barriers to participate and the concept design received nine 5-star responses.
- 6.25 The tree planting plan received eight 5-star responses and one 4-star response.

### **Impact on Mana Whenua Ngā Whai Take Mana Whenua**

- 6.26 The decisions do not involve a significant decision in relation to ancestral land, a body of water or other elements of intrinsic value, therefore this decision does not specifically impact Mana Whenua, their culture, and traditions.
- 6.27 The tree planting is in alignment with the Councils Urban Forest Plan which sought feedback from Mana Whenua and is in alignment with the Iwi Management Plan.
- 6.28 The decision does not involve a matter of interest to Mana Whenua and will not impact on our agreed partnership priorities with Ngā Papatipu Rūnanga.

### **Climate Change Impact Considerations Ngā Whai Whakaaro mā te Āhuarangi**







- 6.29 The decision in this report is likely to contribute positively to emissions reductions, in that local residents will have access to a play facility within walking distance and therefore may choose not to drive to other playgrounds.
- 6.30 If possible, existing unsuitable safe fall (bark) will be reused as mulch in the garden beds.
- 6.31 The decision on tree planting in this report is likely to:
  - 6.31.1 Contribute positively to adaptation to the impacts of climate change.
  - 6.31.2 Contribute positively to emissions reductions.
- 6.32 Tree planting will assist Council in offsetting its emissions and coping with the impacts of climate change.

## **7. Next Steps Ngā Mahinga ā-muri**

- 7.1 If the Board approves the play space renewal plan then equipment can be ordered and construction can begin in spring 2025.
- 7.2 Urban Forest staff will also proceed with sourcing trees and schedule the Reserve for planting.

7.3 If the Community Board decline the plan no further action will be taken.

Attachments Ngā Tāpirihanga

No.	Title	Reference	Page
A  	Final Concept plan for Halifax Reserve play space renewal	25/1248003	15
B  	Halifax Reserve play space renewal- anonymised feedback from October 2024 consultation	25/1248007	19
C  	Memo - Update to Halifax Reserve play space renewal design	25/1801115	21

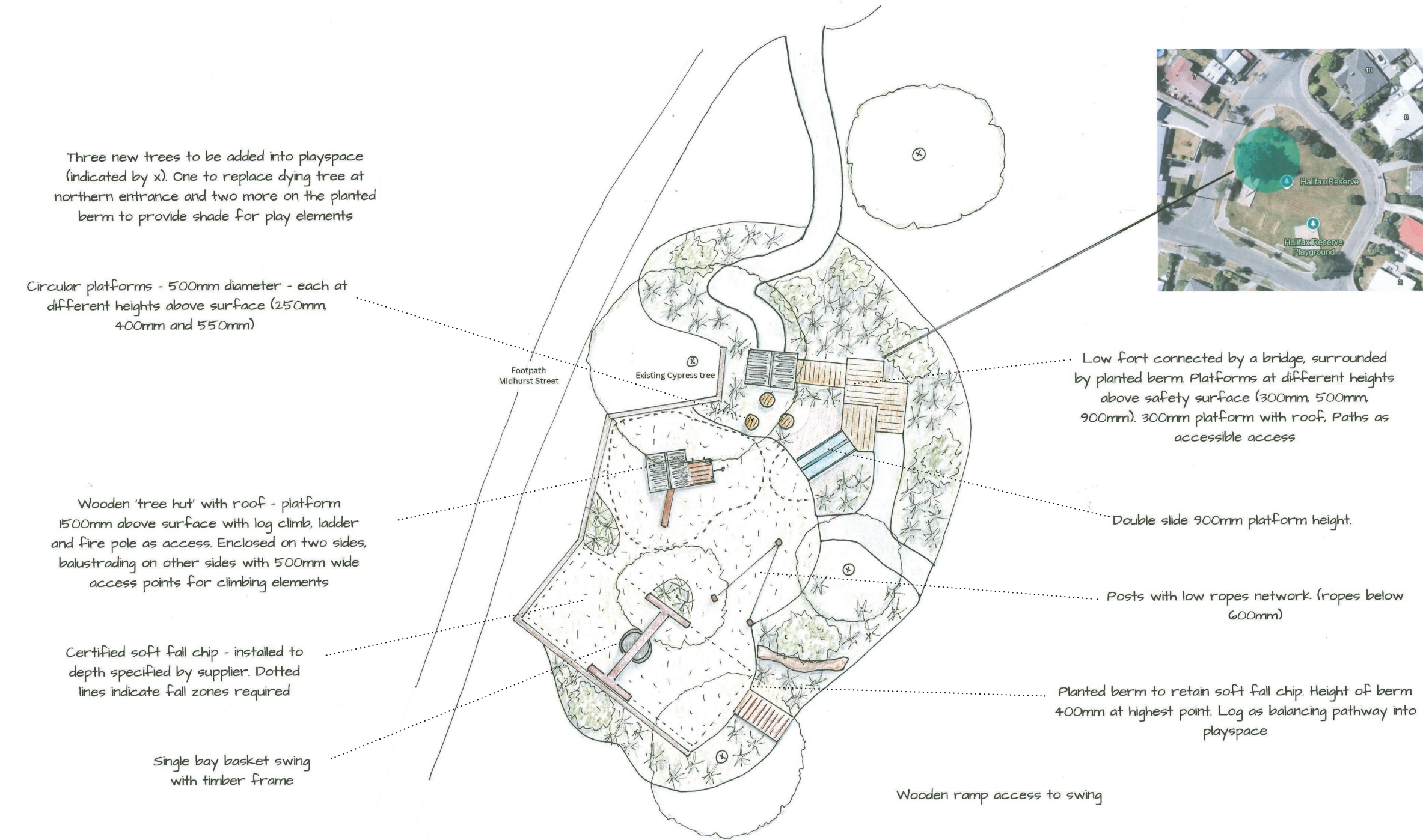
In addition to the attached documents, the following background information is available:

Document Name – Location / File Link
Not applicable

Signatories Ngā Kaiwaitohu

Authors	Holly Whitaker - Project Manager - Community Parks Toby Chapman - Manager Urban Forest Kiran Skelton - Engagement Advisor Claire Fletcher - Project Manager - Community Parks
Approved By	Bridie Gibbings - Manager Operations - Parks Development

The image is a cover page for a concept plan. At the top left, there is a logo consisting of the word "WOOD" in a sans-serif font next to a circle. The background features a large, detailed illustration of a playground. The playground includes a large, leafy tree, a wooden playhouse with a gabled roof, a winding path, and various play structures. The text "Halifax Playground" is centered in a large, bold, sans-serif font. Below it, "Christchurch City Council" is written in a smaller, bold, sans-serif font. Further down, "Concept plan" is written in a medium-sized, bold, sans-serif font. At the bottom left, the text "WOOD LIMITED LANDSCAPE ALTERNATIVES" is displayed in a small, bold, sans-serif font. At the bottom right, the contact information "117 Tai Tapu", "027 783 5722", and "STEFFAN@WOODLA.CO.NZ" is listed in a small, bold, sans-serif font.



WOOD

Playspace - Halifax Reserve  
June, 2025  
Woodland Escape  
emmawoods@woodland-escape.co.nz

Scale approx 1:100 printed on A2.  
Contractors to verify all measurements on site and location of underground services prior to commencing work.  
Although all care is taken to ensure this plan meets NZS 5828:2015, it is not certified to be compliant.

	Halifax Landscape concept plan	27/05/25 collated by: Steffan Kraberger	Page 2
--	-----------------------------------	--	--------





	Halifax Playground Landscape concept	27/05/25 collated by: Steffan Kraberger	Page 3
--	---	--	--------



	Halifax Playground Landscape concept	27/05/25 collated by: Steffan Kraberger	Page 4
--	---	--	--------

Name	Keep swings	Keep roundabout	Keep slide	New items
L T				Basketball court
K R				Toddler friendly play items. Nature play.
C M				Play fort for multi-users. Scooter track.
L H				Equipment suitable for younger children

Other comments



Memos

Christchurch  
City Council 

# Memo

Date: 3 September 2025  
From: Holly Whitaker - Project Manager Community Parks  
To: Waimāero Fendalton- Waimari-Harewood Community Board  
Cc: Bridie Gibbings- Operations Manager Community Parks Development  
Reference: 25/1786813

## Update to Halifax Reserve play space renewal design

### 1. Purpose of this Memo Te take o tēnei Pānui

- 1.1 To update the Waimāero Community Board on the reviewed design for the play space at Halifax Reserve
- 1.2 The information in this memo is not confidential and can be made public.

### 2. Update He Pānui

- 2.1 On 11<sup>th</sup> August 2025, the Waimāero Community Board were presented with a decision report titled, 'Halifax Reserve play space renewal and urban forest plan'. Resolution FWHB/2025/00036 stated "that the Waimāero Fendalton-Waimairi-Harewood Community Board leaves the report to lie on the table and requests staff to work with the Board on alternative play equipment options, with the report to come back for decision at the September Board meeting".
- 2.2 Taking on feedback from Board members, staff then conducted a third engagement event with Isleworth School on 18<sup>th</sup> August 2025. 30 tamariki from a class of 5-6 year olds and a class of 9-10 year olds participated. Tamariki were asked to vote on their favourite two items, based on a list of eight items staff members suggested that would fit within the allocated space and budget. The two most popular items were stepping posts and a wiggly pole.
- 2.3 Based on requests from the Board and input from the community the basket swing has been swapped for a standard swing with strap seat and toddler seat, the stepping post proposed in the original design will remain and we will swap a balancing beam for a wiggly pole.

Memos

Christchurch  
City Council



- 2.4 All other parts of the 'Halifax Reserve play space renewal and urban forest plan' report remain the same.

### 3. Conclusion Whakakapinga

- 3.1 If the Board approves the play space renewal plan then equipment can be ordered and construction can begin in spring 2025.
- 3.2 Urban Forest staff will also proceed with sourcing trees and schedule the Reserve for planting.

### Attachments Ngā Tāpirihanga

There are no attachments to this memo.

### Signatories Ngā Kaiwaitohu

Author	Holly Whitaker - Project Manager - Community Parks
Approved By	Bridie Gibbings - Manager Operations - Parks Development