

Christchurch City Council
MINUTES ATTACHMENTS

Date: Wednesday 17 September 2025
Time: 9.32 am
Venue: Camellia Chambers, Level 2, Civic Offices, 53 Hereford Street

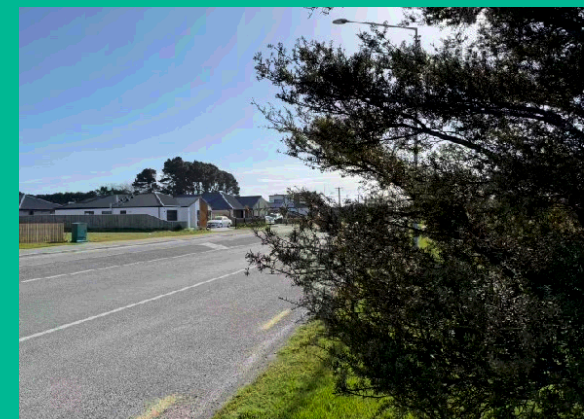
TABLE OF CONTENTS NGĀ IHIRANGI	PAGE
3.2.3. Deputations by Appointment - Cody Cooper	
A. Cody Cooper - Presentation to Council	3
3.2.4. Paul McGarry	
A. Paul McGarry - Presentation to Council.....	18
3.2.5. Atlas Quarter	
A. Mark Darbyshire - Presentation to Council	20

New Footpaths Programme

Further Context and Recommendation

Cody Cooper, 17 September 2025







Awatea Road 1
South, 5 (staff) to 9 (alt.)





Wilmers Road
16 (staff) to 22 (alt.)





Steadman Road
19 (staff) to 29 (alt.)

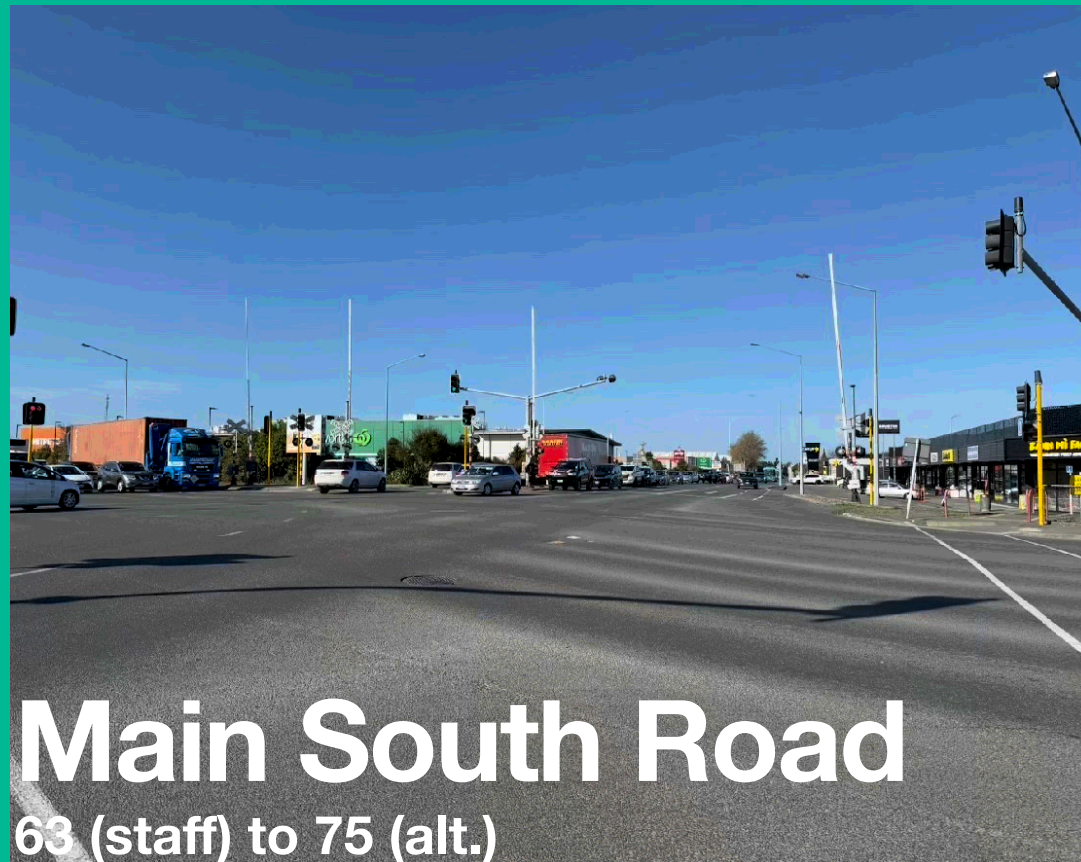




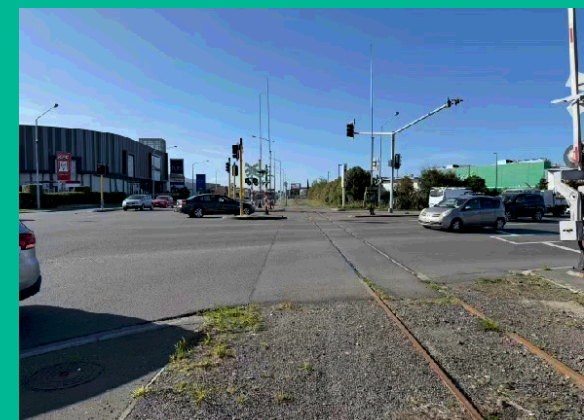
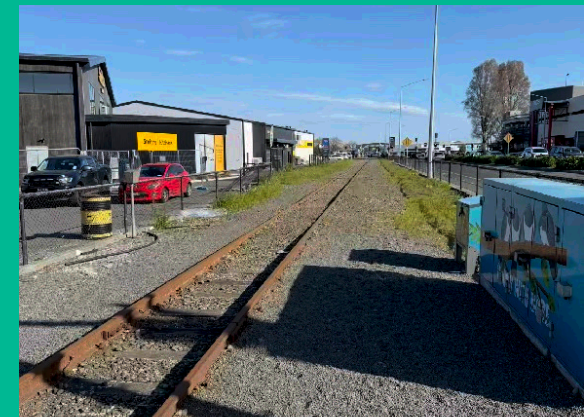
Vickerys Road 1 & 2

35+



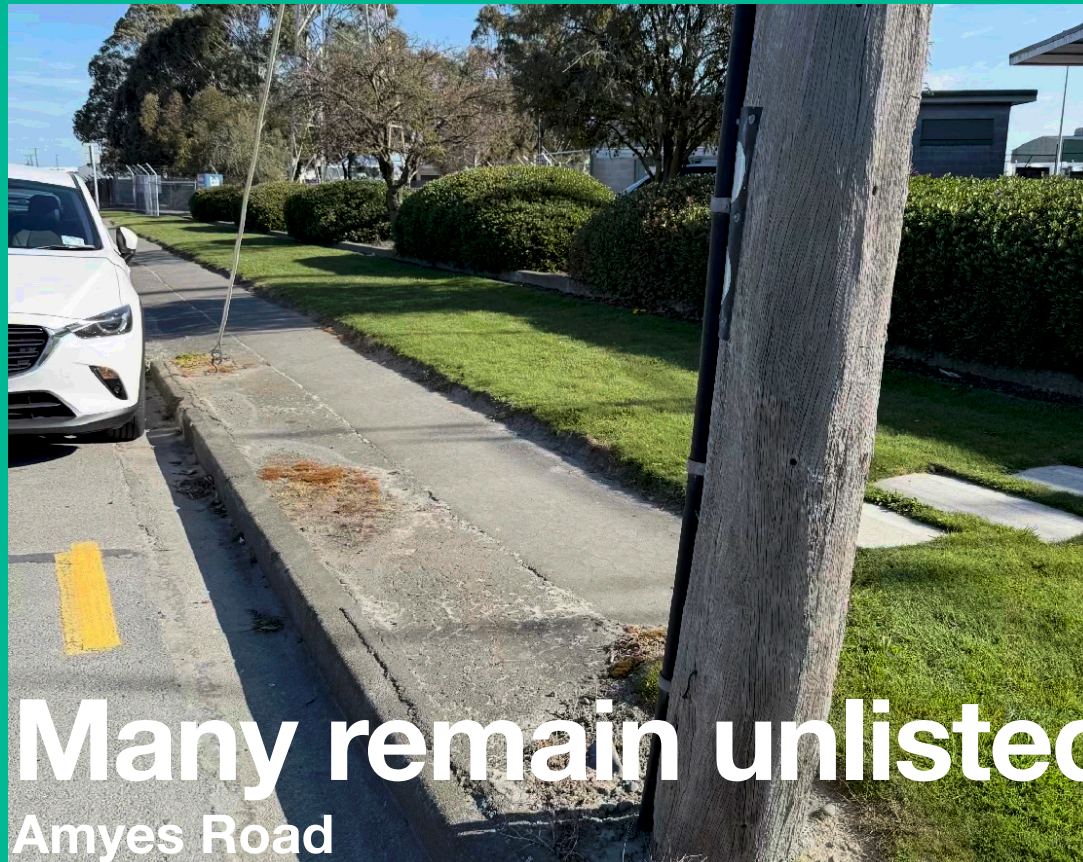


Main South Road
63 (staff) to 75 (alt.)





New devs continuing without
Samantha Lawry Road



\$3.7m

Halswell Minor Safety Improvements

Halswell

Improvements by Ward

- Improve Wigram/Hayton Road intersection
- Upgrade Kennedys Bush Road
- Corridor of Quaifes Road
- School Area Improvements
 - Knights Stream School
 - Halswell School
 - Oaklands School
- Signalised Crossings
 - Halswell Junction Road
 - Dunbars Road
- Speed Humps for Milns Road
- Bus stop upgrade for Murphys Road

\$6.6m

Riccarton CRAF funding

Riccarton

Improvements by Ward

- Church Corner safety improvements, and subsequent re-working (x2)
- Traffic islands on Riccarton Road, and subsequent removal thereof
- Deans Ave crossing & speed hump
- Bradshaw Terrace street renewal
- Athol/Waimairi Safety Improvements
- Pedestrian crossing near Yaldhurst Road / Brake Street
- Speed Humps
 - Suva Street
 - Owens Terrace
 - Hillary Crescent

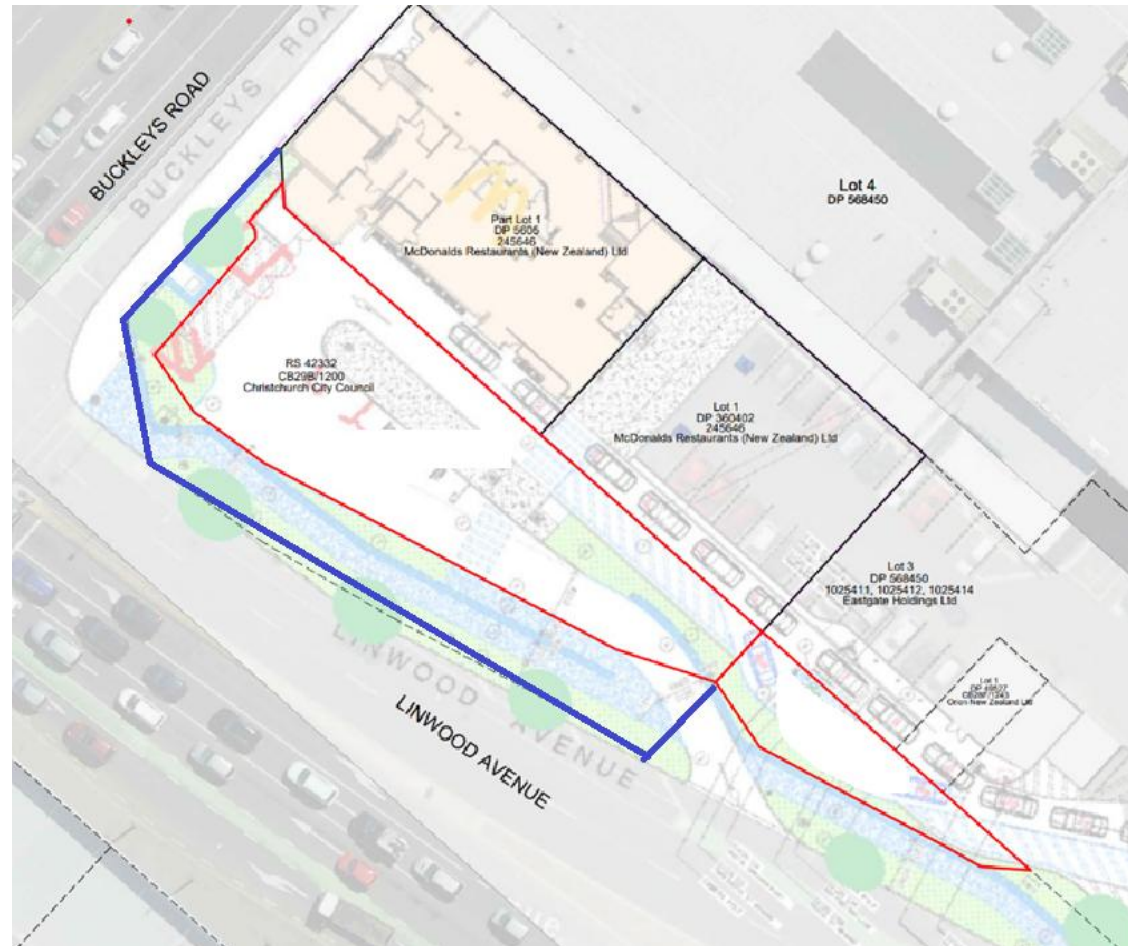


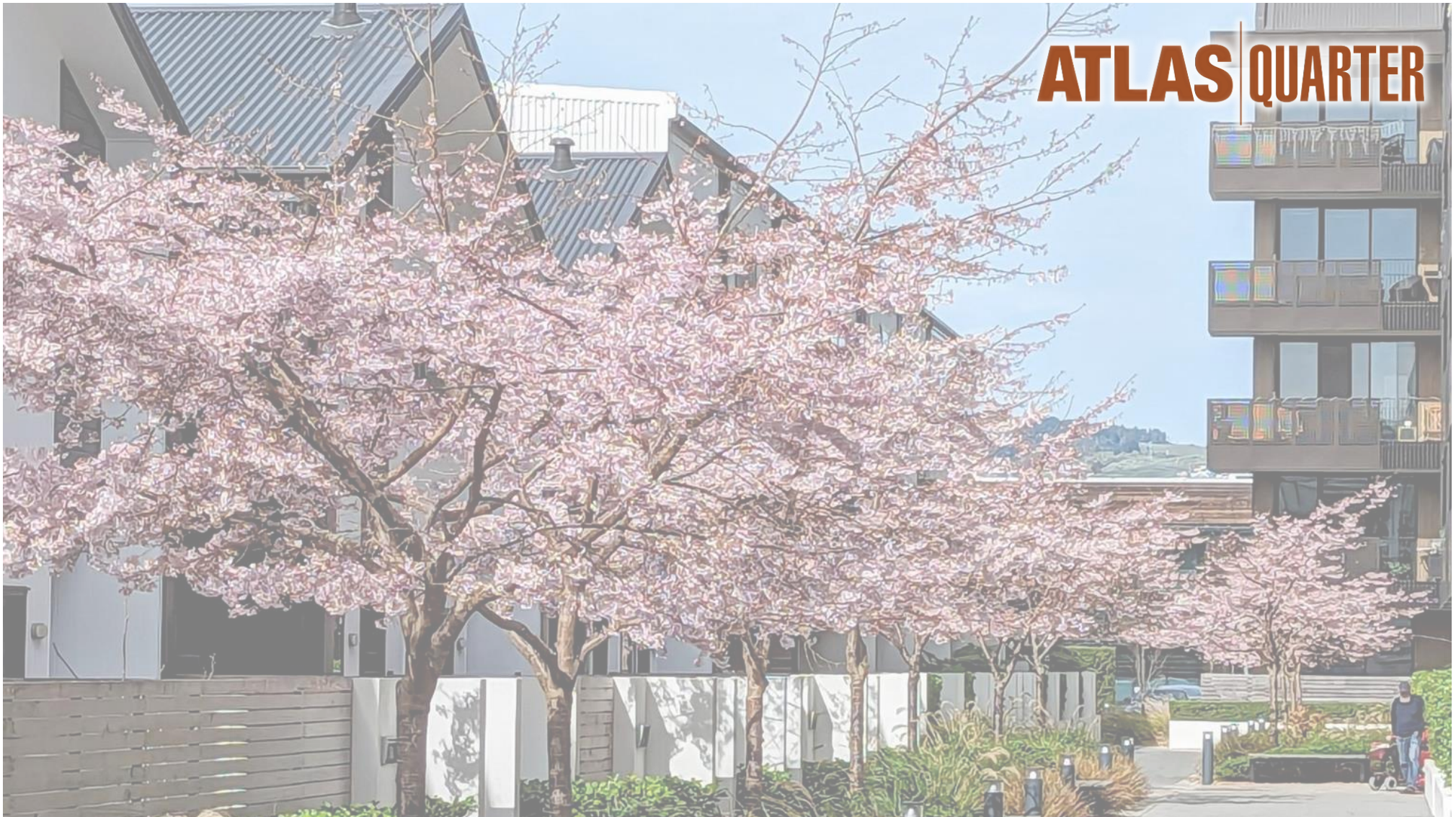
Most expensive level crossing, and 1 new speed hump

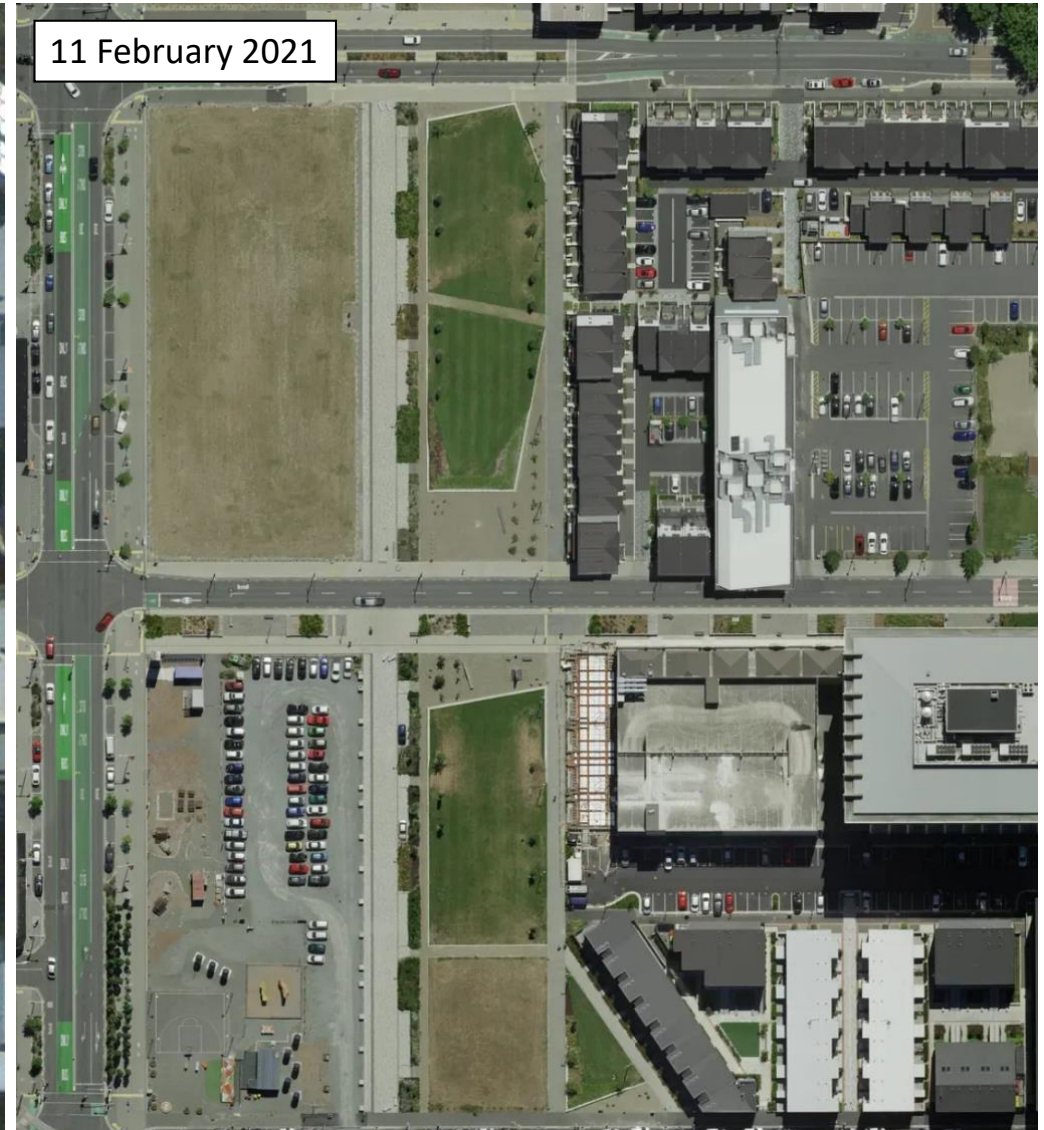
Hornby “major” transport projects

~~Rates cap?~~ I support a rail cap!







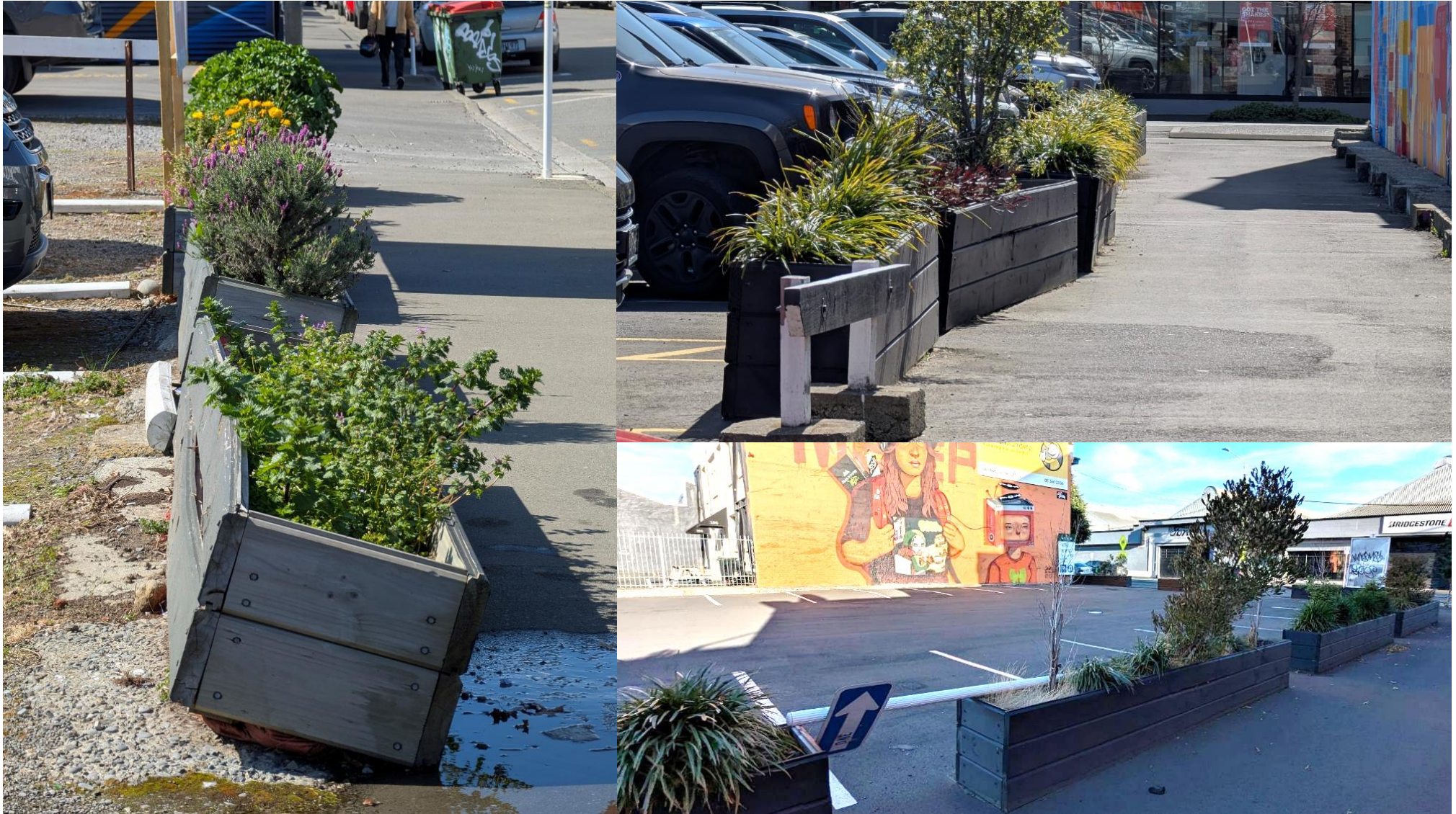


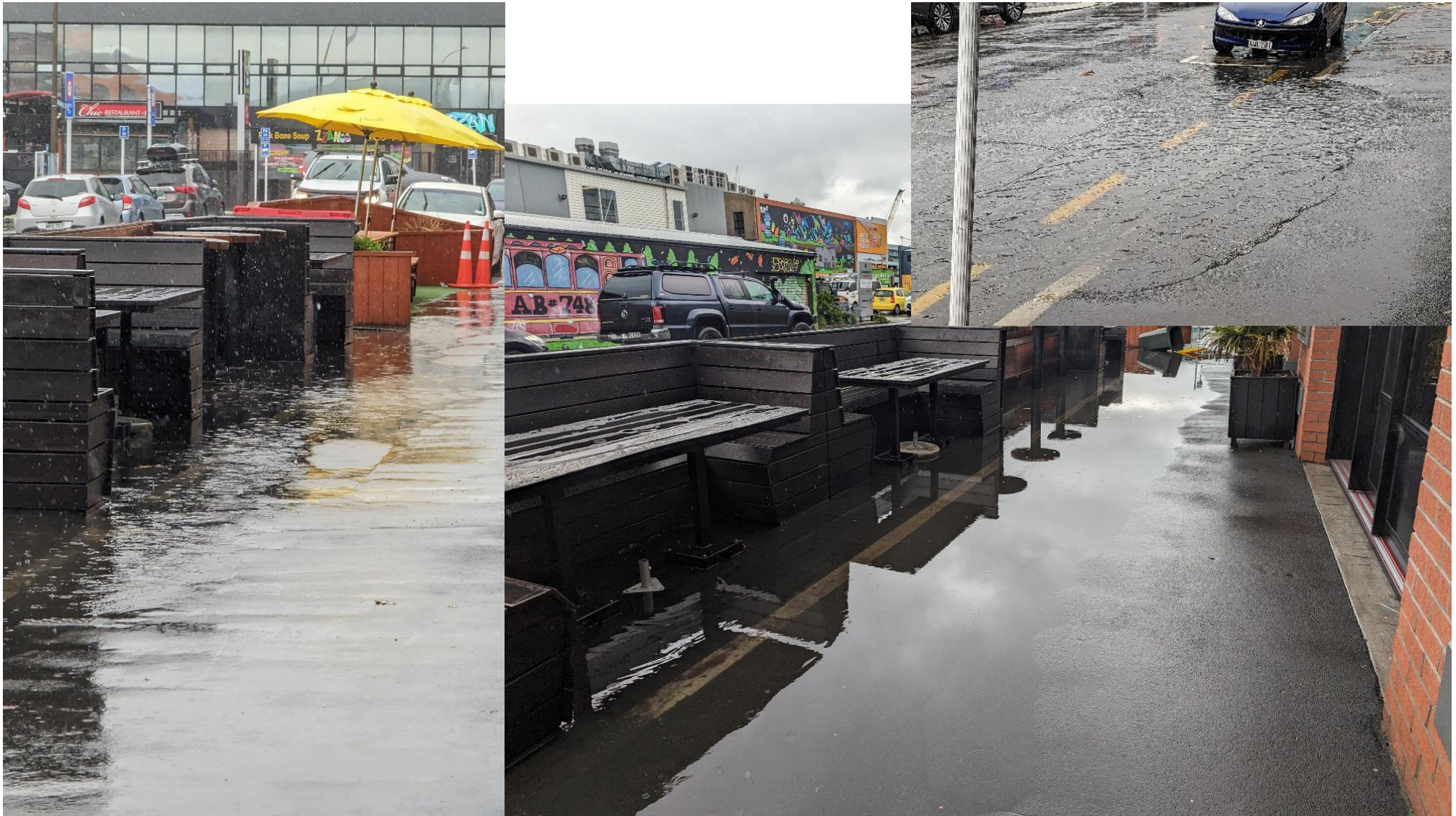
3 September 2010

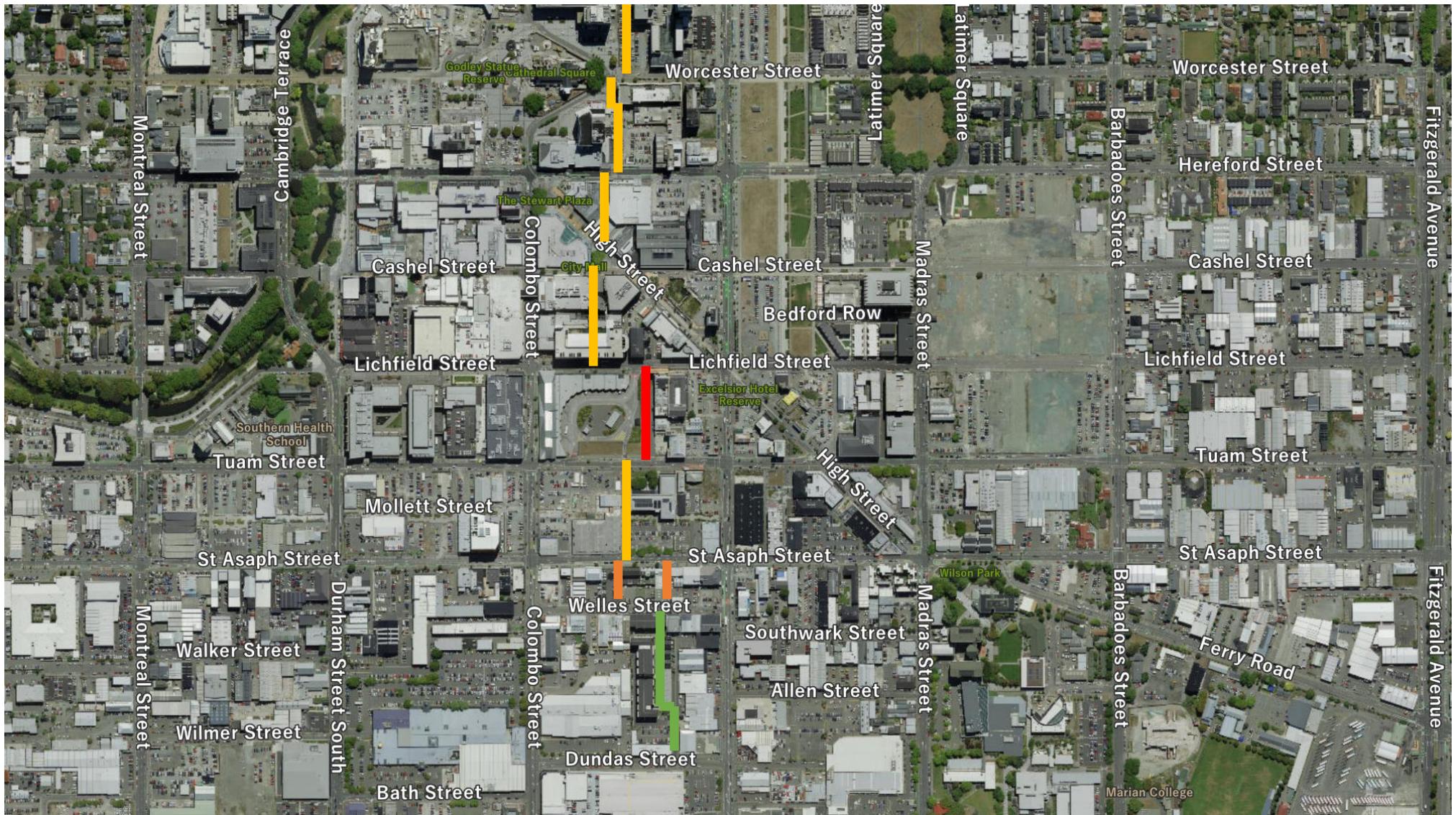


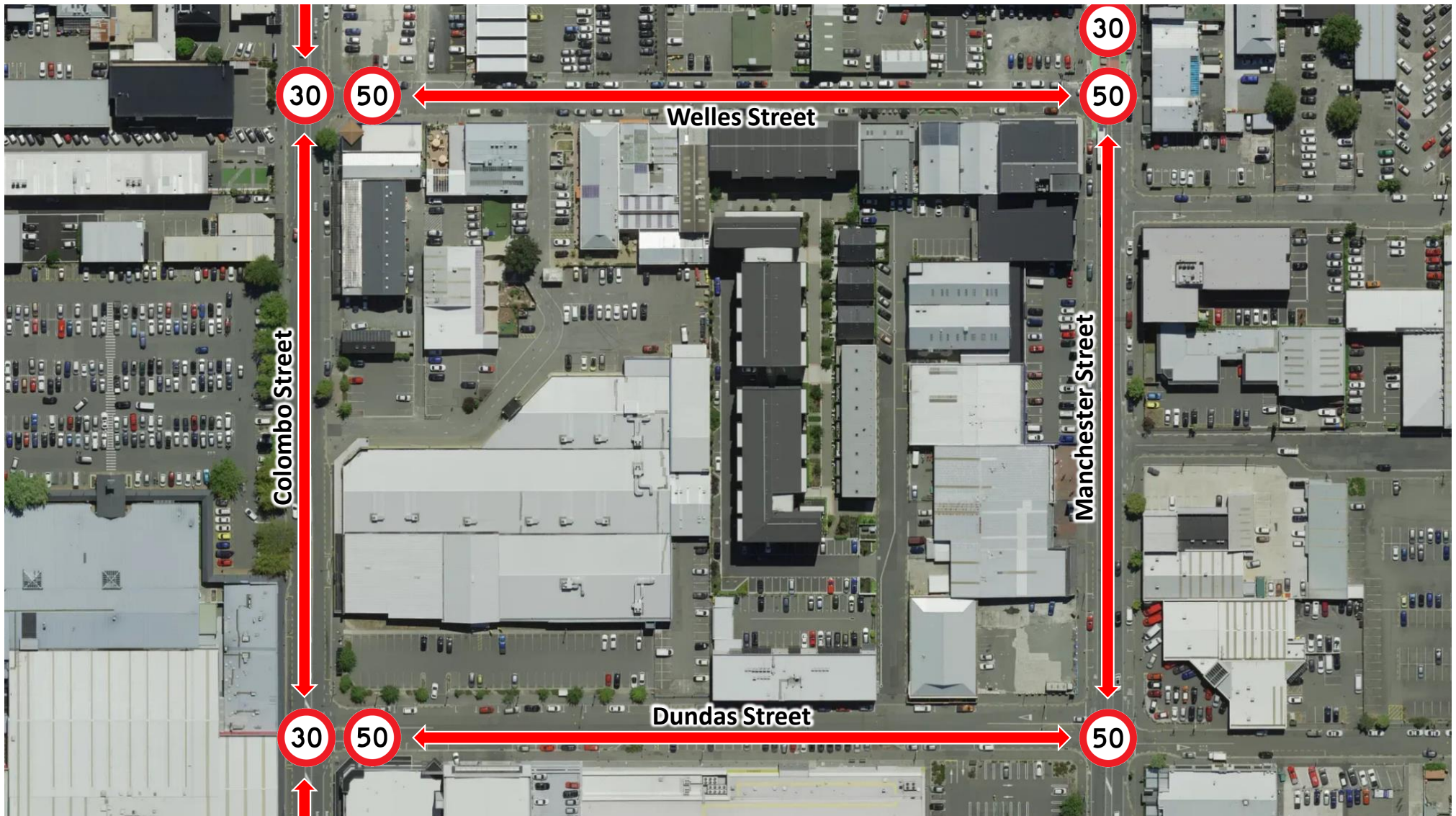
11 February 2021











Security incidents

- Over 50 security incidents since Atlas Quarter began
 - Car and bike thefts, break-ins, aggression, tagging
- Likely many more incidents we don't know about
- Only a fraction were reported to police

ATLAS QUARTER

Cameras in safe high-density neighbourhoods

- Let's show 20,000 people can live ***safely*** in the city centre.
- Atlas Quarter is open to cost-sharing for on-street cameras near our entrances
- Please find out how much this would cost and whether the necessary cables already exist
- A crime deterrent
- An incentive for residents to report incidents to the police.



Other ideas

- Bike parks closer to O-Studio
- Rubbish and recycling bins
- Close the street for a family-friendly fair!

ATLAS QUARTER

