

Christchurch City Council MINUTES ATTACHMENTS

Date: Wednesday 3 September 2025
Time: 9.31 am
Venue: Camellia Chambers, Level 2, Civic Offices, 53 Hereford Street

TABLE OF CONTENTS NGĀ IHIRANGI	PAGE
12. Monthly Report from the Community Boards - August 2025	
A. Waipapa Papanui-Innes-Central Community Board - Presentation to Council.....	3
B. Waipuna Halswell-Hornby-Riccarton Community Board - Presentation to Council.....	12
C. Waitai Coastal-Burwood-Linwood Community Board - Presentation to Council	19
D. Te Pātaka o Rākaihautū Banks Peninsula Community Board - Presentation to Council	25
E. Waihoru Spreydon-Cashmere-Heathcote Community Board - Presentation to Council	31
F. Waimāero Fendalton-Waimairi-Harewood Community Board - Presentation to Council	38
3.1.2. Rebecca Robin	
A. Rebecca Robin - Presentation to Council.....	44
13. Plan Change 14 Decision (in-part) and Proposed Withdrawal	
A. Item 13 - Plan Change 14 Decision (in part) and Proposed Withdrawal - Staff Presentation to Council.....	51
B. Item 13 - Plan Change 14 Decision (in part) and Proposed Withdrawal - Replacement Attachment A - Proposal Belfast Map 1.....	60
C. Item 13 - Plan Change 14 Decision (in part) and Proposed Withdrawal - Replacement Attachment B - Proposal Papanui Map 2	61
D. Item 13 - Plan Change 14 Decision (in part) and Proposed Withdrawal - Replacement Attachment C - Proposal St Albans Map 3	62
E. Item 13 - Plan Change 14 Decision (in part) and Proposed Withdrawal - Replacement Attachment F - Proposal Linwood Map 6.....	63
F. Item 13 - Plan Change 14 Decision (in part) and Proposed Withdrawal - Replacement Attachment H - Proposal Addington Hillmorton Map 8	64

Waipapa Papanui-Innes-Central Community Board

Report to Council for August 2025



Papanui



Innes



Central

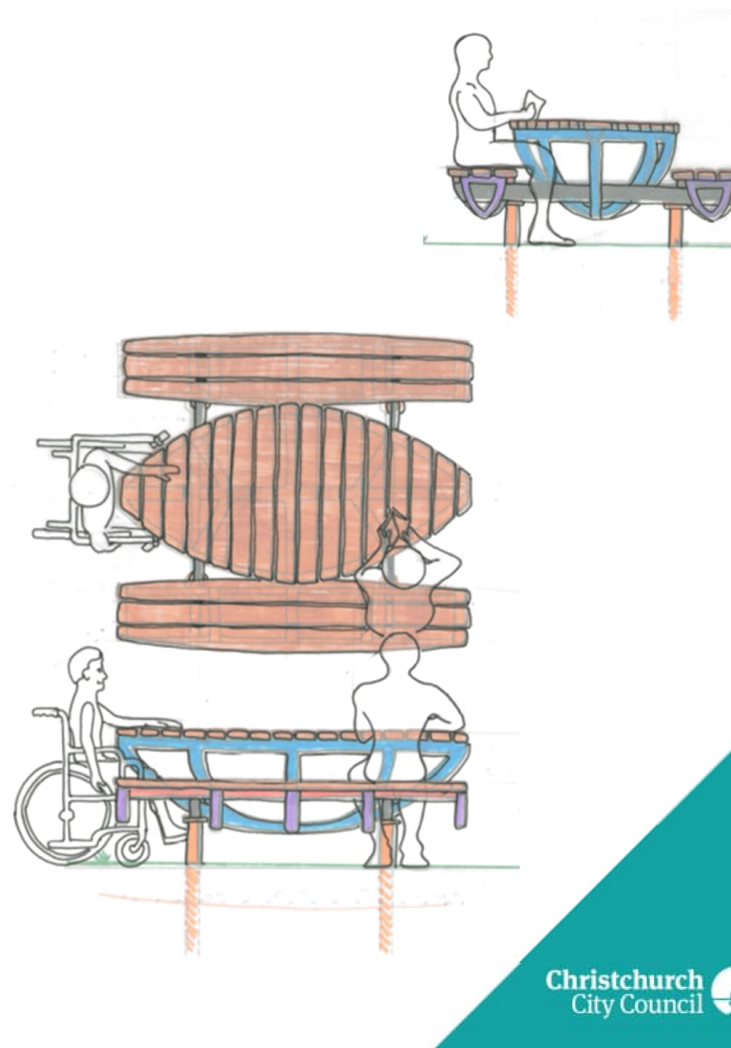
Presenters: Emma Norrish and Simon Britten
3 September 2025

Public Forum

- Elisha Brocherie – YDF report on competing at the Korfball Club Championships in Adelaide, Australia
- Alisa Wada – YDF report on representing New Zealand at the FISU Summer World University Games 2025 for Artistic Gymnastics in Germany

Deputations

- Treena Davidson – Ferry Road Active Transport Improvements
- Diane Mulholland – Momorangi Reserve play space renewal - concept plan
- Jim Harris, St Bede's College – Momorangi Reserve play space renewal - concept plan

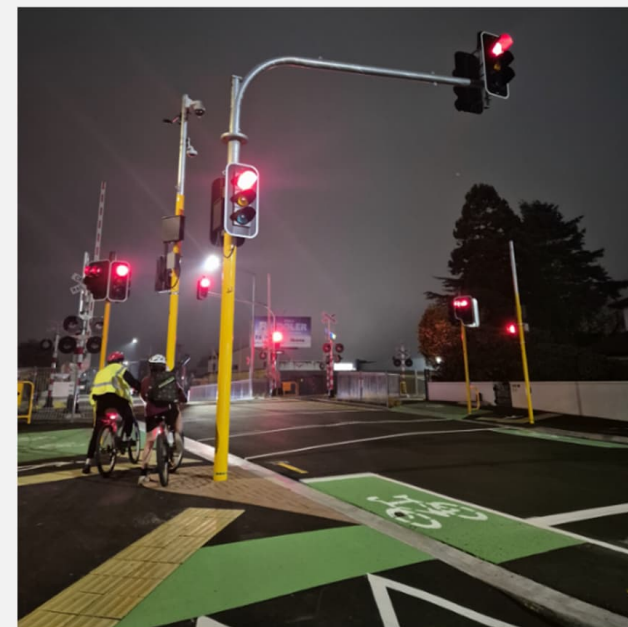


Transport Upgrades

Northern Line Cycleway Railway Crossing Upgrades Complete

The commissioning process for the new signalised cyclist/pedestrian crossings and automatic railway gates along the Northern Line cycleway route was completed as planned on 15 July, and the Railway Crossing Upgrades at Harewood Road, Langdons Road and Sawyers Arms Road are now operational.

This has been a successful collaborative project between the Council, KiwiRail, Fulton Hogan and Peloton (Designer) teams, which will result in safer journeys for road, path and rail users in the community.



Strengthening Communities Together
Enabling active and connected communities to own their futures

Christchurch
City Council

Community Liaison

CHS Avebury Climate Resilient Garden

New signage has been erected at Avebury House regarding the CHS Avebury Climate Resilient Garden, which is a collaborative project by Canterbury Horticultural Society to create and maintain an ornamental garden which showcases a wide variety of plants that are resilient in Christchurch's changing climate.



Strengthening Communities Together
Enabling active and connected communities to own their futures

Community Liaison

Delta Mid-Year Xmas Lunch &
Delta 30-Year Celebration

Delta staff and clients enjoyed a
mid-year Xmas lunch on 18 July,
and Delta held their 30-year
celebration on 19 August.

Volunteers at the latter event
spoke outlining their commitment
and feeling of "home" that Delta
has given them. One of the
speakers had volunteered at Delta
for 28 years.



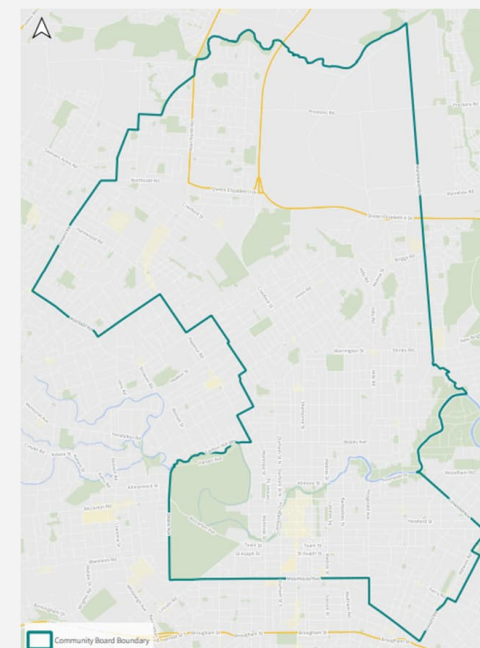
Strengthening Communities Together
Enabling active and connected communities to own their futures

Christchurch
City Council

Community Liaison

Community Liaison Hui

On Thursday 31 July a community liaison hui was held with representatives of community groups from the Papanui-Innes-Central area interested to connect and exchange information about local initiatives and activities.



Strengthening Communities Together
Enabling active and connected communities to own their futures

Community Liaison

Principal's Breakfast

On Friday 22 August local principals were hosted in the Papanui Boardroom for a kōrero. The hui provided a valuable chance to connect, and Principals had the opportunity to share wins, concerns, and ideas, building a supportive network.

The Play Director from Kia Kori Waitahi also presented as guest speaker, offering insights into the role of play in supporting tamariki and schools.



Strengthening Communities Together
Enabling active and connected communities to own their futures

Environment

Local Parks Update

- Oliviers Reserve (top left)
Working Bee maintenance & weeding.
- Rutland Reserve (top right and bottom)

A planting was held on 27 July with the Vanuatu community in Rutland Reserve with a gifted kahikatea tree to honour their language being added into the Ministry of Pacific People's language week series.



Strengthening Communities Together
Enabling active and connected communities to own their futures

Thank you!

Waipuna Halswell-Hornby-Riccarton Community Board Report to Council – 3 September 2025

Te kaipāhō (Presenters): Marie Pollisco, Chairperson
Helen Broughton, Deputy Chairperson



1

What is the Riccarton Tool Shed?

The purpose of the Riccarton Tool Shed is to provide residents with easy and affordable access to tools and resources in their local community. The Riccarton Tool Shed will be stocked with over 200 tools, gardening equipment and household items that members can borrow to maintain their house and section, and to do their own gardening and DIY projects.

The Riccarton Tool Shed will operate as a not for profit cooperative with members asked to assist with the operation of the Tool Shed sessions four times a year.

Membership fees are \$30 for the first year, and \$20 per year for renewing memberships. Members visit the Riccarton Tool Shed and borrow the items they need for a week. All hand tools and safety equipment is free to borrow and a small borrowing fee is applied to electrical items (\$5), mowers (\$10), and higher wear motorised items (\$15). Weekly borrowing session will be held, where members can borrow and return tools.



2

Riccarton Tool Shed opening

The Riccarton Tool Shed has officially opened.

Located within the Riccarton Baptist Church complex, the project was initiated by Oak Development Trust and will eventually offer more than 200 tools and household items for community members to borrow for personal use.

Riccarton Community Garden and Pātaka Trust Mid-Year Hui



Riccarton Community Garden and Pātaka Trust held a mid-year hui to honour Nick and Loretta Te Paa and their volunteers at Wharenuui School.

Glow Disco

The Greater Hornby Residents' Association hosted a vibrant Glow Disco held at Hornby Primary School. The event was a hit with tamariki, who arrived dressed in neon outfits and enjoyed the positive atmosphere.



Community Service Awards 2025

The final Award presentation was held this month. The Board has presented nine Community Service Awards and three Youth Service Awards at various community gatherings.



Upper Riccarton War Memorial Park Opening



The Upper Riccarton War Memorial Park was officially opened on Saturday 16 August.

Located where the Upper Riccarton War Memorial Library once stood, the park has been designed to retain a sense of remembrance for those who have given their lives in service for the country.

Thank you!

Waitai Coastal-Burwood-Linwood Community Board

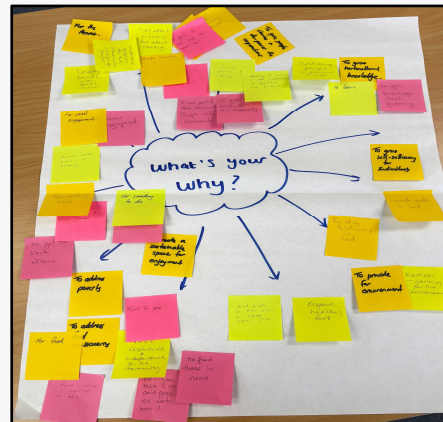
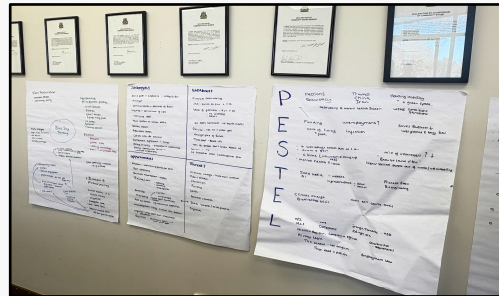
Report to Council – September 2025



Tekaipāhō (Presenter): Jackie Simons, Deputy Chair

Highlights from the Board Area

Smith Street Community Farm Workshop



Highlights from the Board Area

SuperGrans SuperSkills Ōtautahi



Highlights from the Board Area

Ōtākaro Avon River Corridor



Advocacy

Bromley Noise
Issues

Homelessness in the
Red Zone

Portlink

Thank you!

Te Pātaka o Rākaihautū Banks Peninsula Community Board Report to Council – August 2025



Photo by Lukas Bischoff

Presenters: Lyn Leslie, Chairperson & Penelope Goldstone, Community Governance Manager Banks Peninsula

Coastal Hazards Adaptation Planning

Akaroa and the Bays

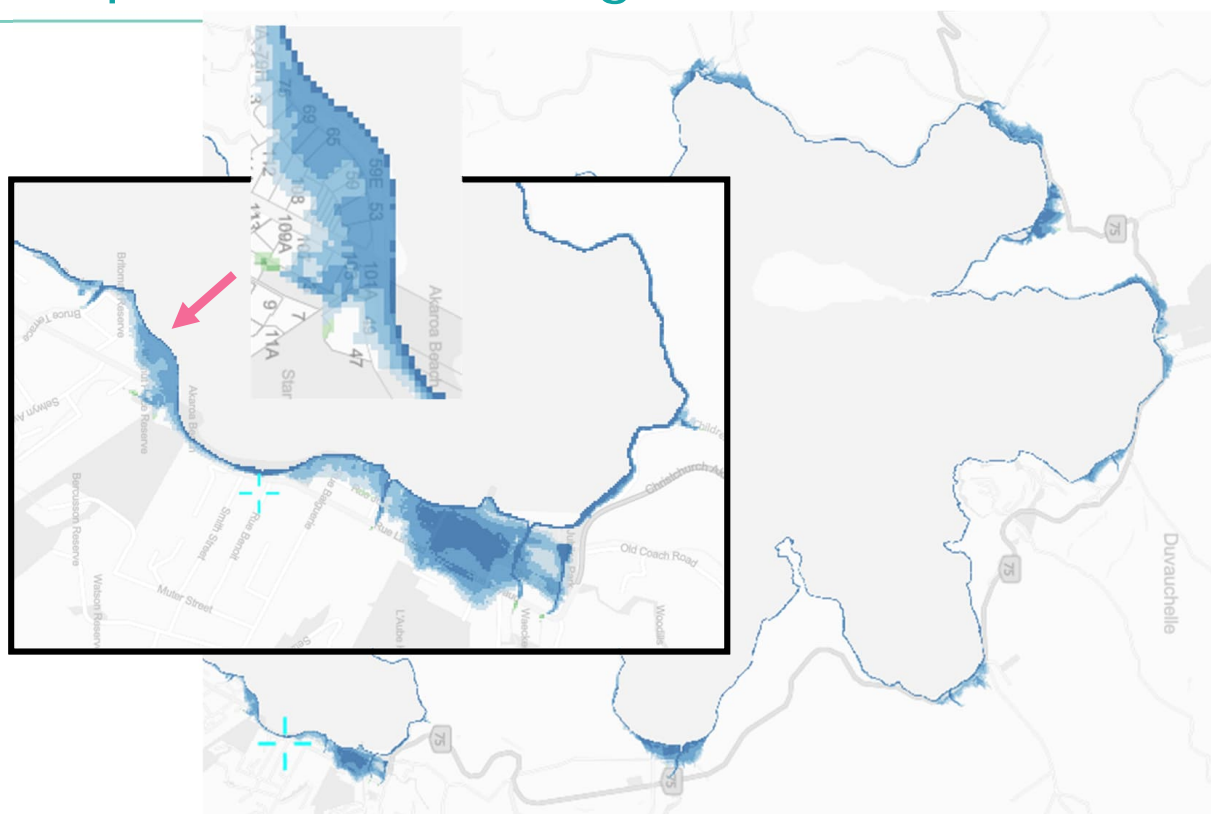
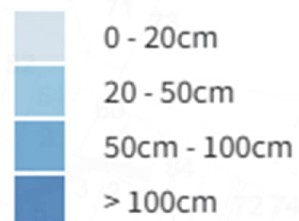
Year: 2050

Sea level rise: 20 cm

Potential flooding:

Depth of flooding

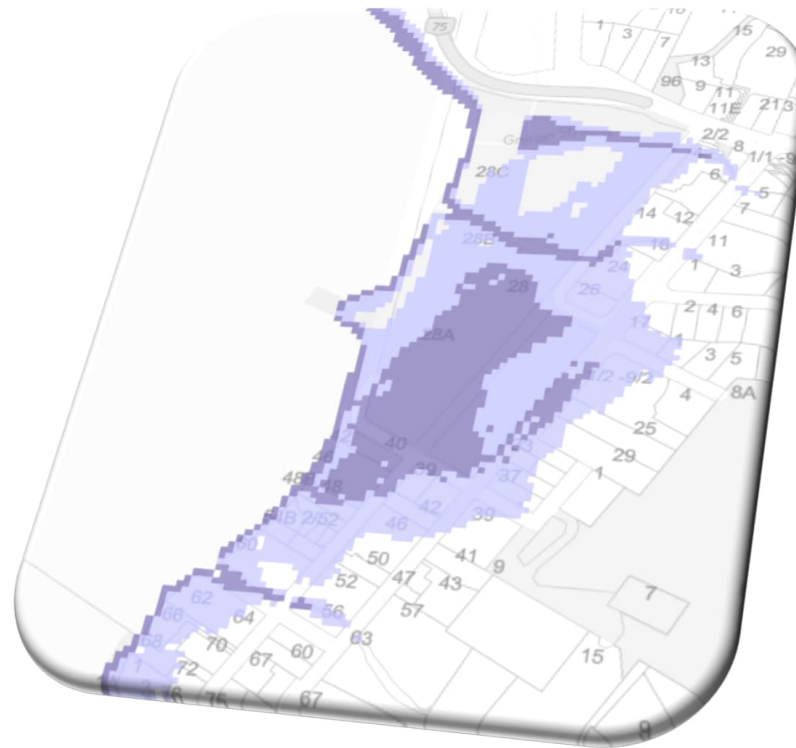
Direct



2 September 2025

Attachment D

Item 12



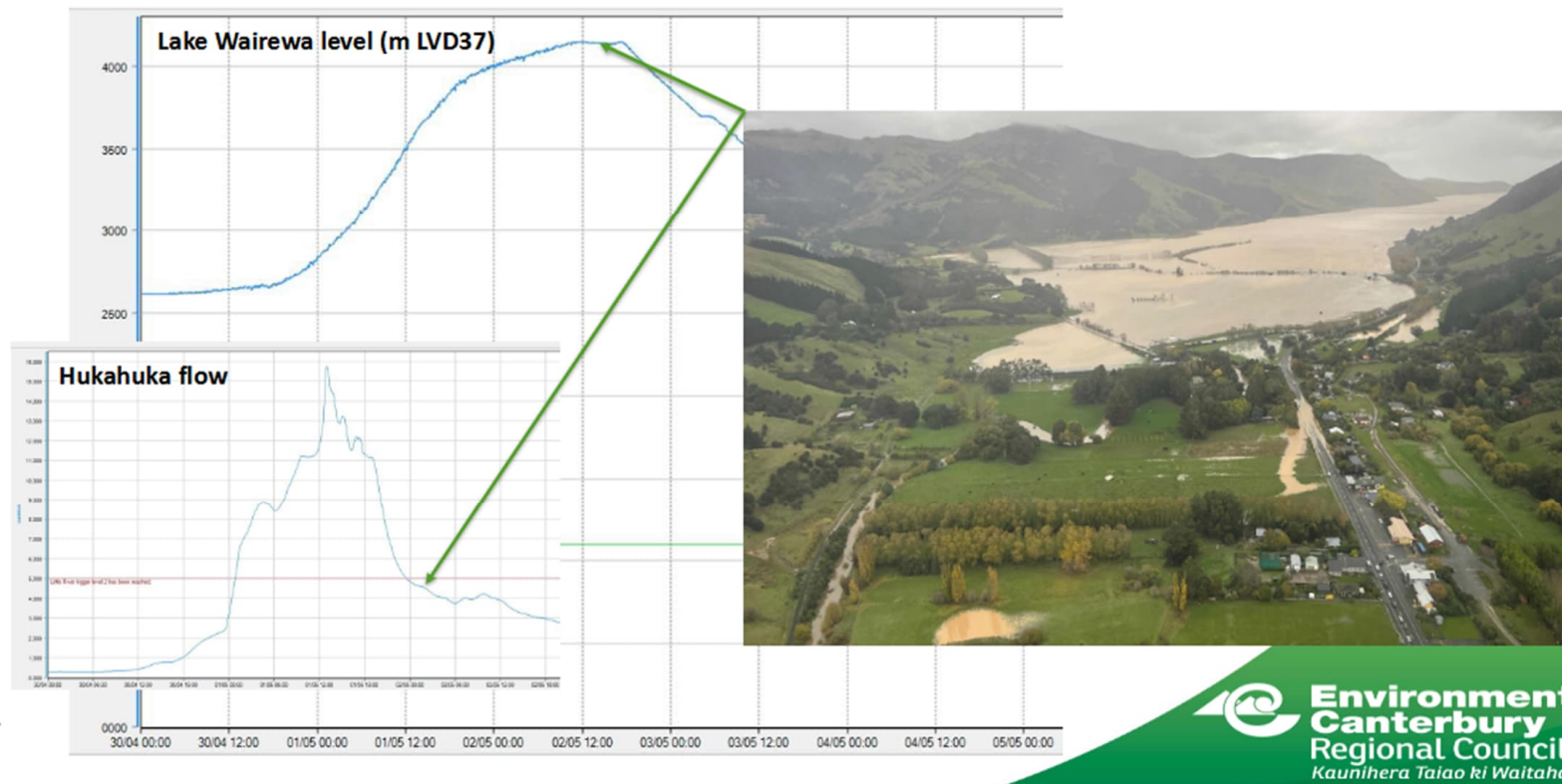
Little River Flood Modelling Results

Little River – 1 May 2025 at 2-3pm



Little River Flood Modelling Results

Lake Forsyth (Lake Wairewa) – 2 May 2025 at 1:40pm



Thank you!
Ngā mihi nui!



Waihoru Spreydon-Cashmere-Heathcote Community Board

Report to Council

Te kaipāhō (Presenters):
Callum Ward, Chairperson
Keir Leslie, Deputy Chairperson

Part A



Strickland Street/Somerfield
Street safety improvements

Christchurch Regeneration
Acceleration Facility (CRAF)
programme

10 September 2025
Council Meeting

Board priorities

Ōmōkihi South Library and Customer Service Hub update



Community



Neighbourhood
building

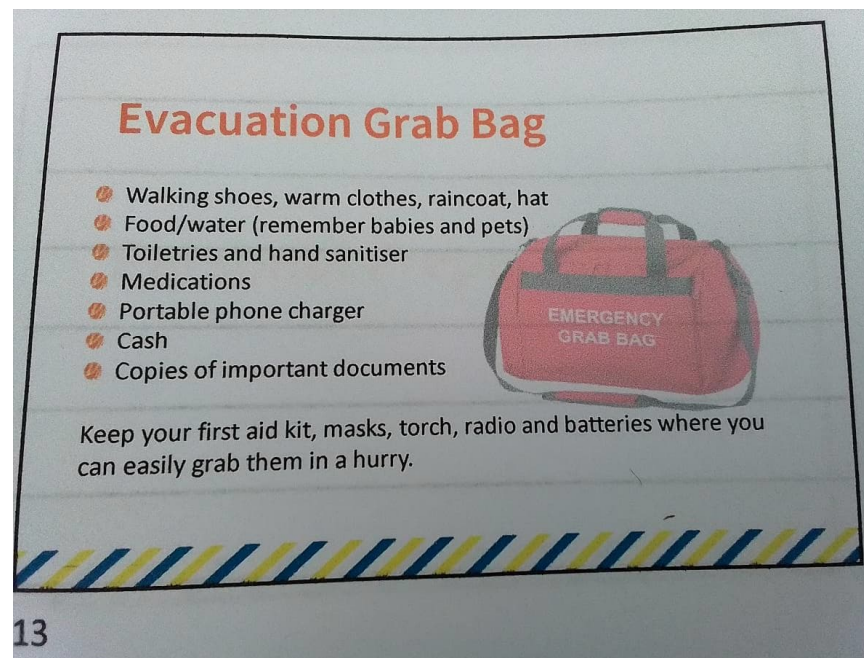
Community



Community

Emergency Preparedness – Emergency Hubs

- Sumner Residents Association
- Redcliffs Residents Association
- Cashmere Residents Emergency Support Team
- Somerfield Community Emergency Response Team



13

Our Board's ambition is
liveable communities!

Waimāero Fendalton-Waimairi-Harewood Community Board

Report to Council – 3 September 2025

Presenters: Jason Middlemiss (Chair), Maryanne Lomax (Community Governance Manager)

Ilam Stream Restoration

The plantings along the banks of the Ilam Stream through Avonhead Park and Crosbie Park have now been completed, marking a significant milestone in efforts to “bring our stream back to life.”



August Community Liaison Meeting

There was another great turn-out for our August community networking meeting with approximately 30 people in attendance, representing a variety of local community organisations.

Our guest speaker was Wayne Hamilton from Fire and Emergency NZ who spoke about the four R's of emergency management – Risk reduction; Readiness; Response; and Relief.



Bishopdale Outdoor Table Tennis

An outdoor table tennis table will be going in in the next few months on the Bishopdale Village Green.

This project was a result of a recent public forum to our Board which highlighted to popularity of outdoor table tennis, particularly amongst our Asian communities.

The table will be going in at the Bishopdale Village Green next to the library.



Bishopdale Village Green



Example of table to be used

Belfast Cemetery Cat Trapping



Jarad with his new traps!

There has been a noticeable increase in the number of feral cats in the Belfast area, particularly at the Belfast Cemetery.

Local Christchurch man, Jarad Pateman, has been volunteering his time and resources to trap the cats and working with other agencies to rehome them.

So far, he has managed to catch 14 cats and kittens. This included one cat who was microchipped and had been missing from the Shirley area for a few months. It has now been reunited with its family!

Thank you!

Red Zone Response – Building a Better Bridge

**Rebecca Robin | August 2025 |
Musician & Advocate**

What's Missing?

- Agencies are doing important mahi — and we honour that
- But where's the permanent link between Council and the people?
- Council staff decisions sometimes bypass elected members and community
- The Community feels unheard, disconnected, or moved on without notice

A Bridge, Not a Barrier

- A Homelessness Liaison role embedded within Council
- Not replacing agencies — but connecting them
 - Rooted in lived experience, not just policy
 - A voice between community, staff, and elected members

Future Solutions?

- Could Council support co-design workshops with people with lived experience?
- Could we trial a liaison pilot for three months?
 - Could the Community Board host quarterly grassroots hui?
- Can we create clear protocols for responding to encampments?

From my Māori Liaison Report

- "The Council's response to homelessness must be guided by manaakitanga, transparency,
- and an understanding of who holds lived experience — and who makes decisions."
- — Rebecca Robin, Māori Liaison Report, August 2025

Closing Thoughts

- This isn't about blame — it's about building forward
- Elected members stepped in when it mattered — and it made a difference
 - Let's make that difference permanent
- "We're not asking you to reinvent the wheel — just to tighten the spokes."

Plan Change 14 Decision (in part) and Withdrawing PC14

3 September 2025

Brent Pizzey – Senior Legal Counsel

Sarah Oliver – Team Leader, City Planning

Key points

- Legal deadline for Council’s final decision making on IHP recommendations: **12 December 2025**
- Council can apply to withdraw undecided part of PC14, but first must meet RMA requirement for 30 years of "feasible housing capacity" in the Operative District Plan
- Only way to achieve feasible requirement in the time available: **Accept IHP recommendations for more medium density.** If reject, may not be time to complete decisions.
- Medium density locations are consistent with Council's decisions on intensification around centres in PC14 and Greater Christchurch Spatial Plan.
- All geographic areas in the “Proposed MRZ” recommendations are required to provide feasible capacity – if reduced will not meet the criteria to withdraw.
- Councillor additional recommended “Prospective MRZ Areas” are not needed to meet requirement.

The RMA path to withdraw undecided parts of PC14

- Council can apply to the Minister to withdraw.
- Minister may approve withdrawal if satisfied that the Operative District Plan meets the "key requirement" being:
 - = sufficient feasible housing capacity (commercially feasible for a developer) to meet Stats NZ projected high growth demand for a 30 year period, plus a 20% margin.
- Need **65,600** feasible housing capacity. Operative District Plan has a shortfall of approximately 7,000 feasible houses.
- The only way to meet the key requirement in the time available:
 - Accept IHP recommendations for more medium density.
 - If accept, medium density areas become operative in the District Plan.

Process outcomes if Council take a different path

Not providing any more medium density areas:

- Will not meet the "key requirement".
- Cannot withdraw PC14.
- If can not withdraw, must decide on medium density for all residential areas.

Removing or changing some of the recommended medium density areas:

- Need to recalculate feasible housing capacity.
- Risk of delay and December deadline not achieved.

Rejecting IHP recommendations on medium density zones, qualifying matters, overlays or rules and recommending an alternative:

- Whether the Council meets the "key requirement" for the Operative Plan must be recalculated after the Minister's decision on the alternative.

Decision making considerations

On PC14 decisions on IHP recommendations:

- Confined to what is in the IHP record
- Cannot consider anything outside of the IHP records.

On what geographic areas to make those PC14 decisions for:

- Are not confined to the IHP record
- Can consider other relevant matters
- Can consider public views outside of the IHP record

Community views on what areas for more medium density

The Act does not require, and provides no time for, further consultation and engagement on PC14

Extensive engagement and consultation on intensification has occurred to inform Council's decision:

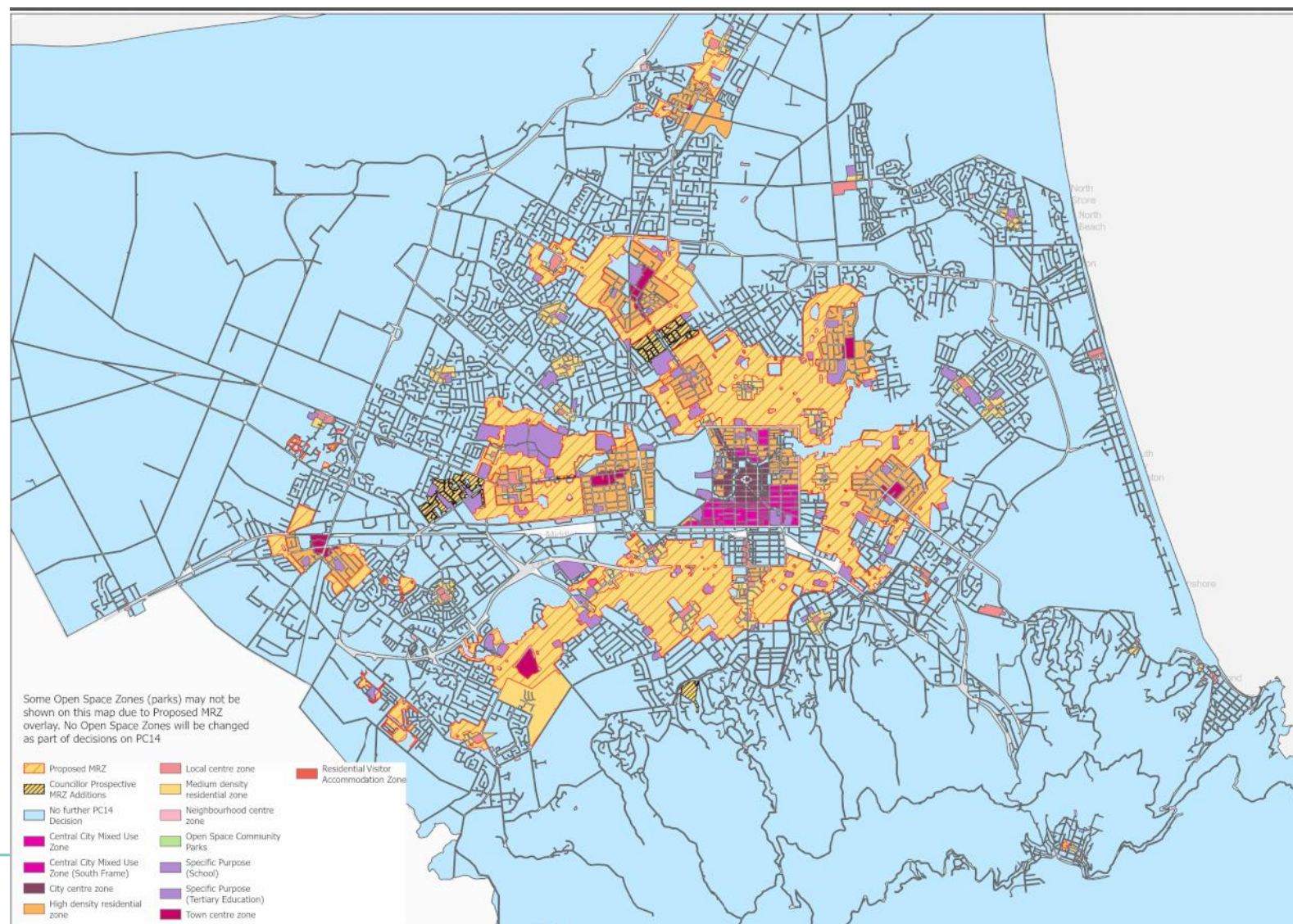
- Feedback on draft plan change - 700 respondents
- Submissions on notified plan change - over 1,000 submissions
- Greater Christchurch Spatial Plan (GCSP) - over 7,000 respondents

Council's December 2024 PC14 decision supported residential intensification around commercial centres.

Council's adoption of the GCSP supported residential intensification around centres and along public transport corridors.

Structure of the report recommendations

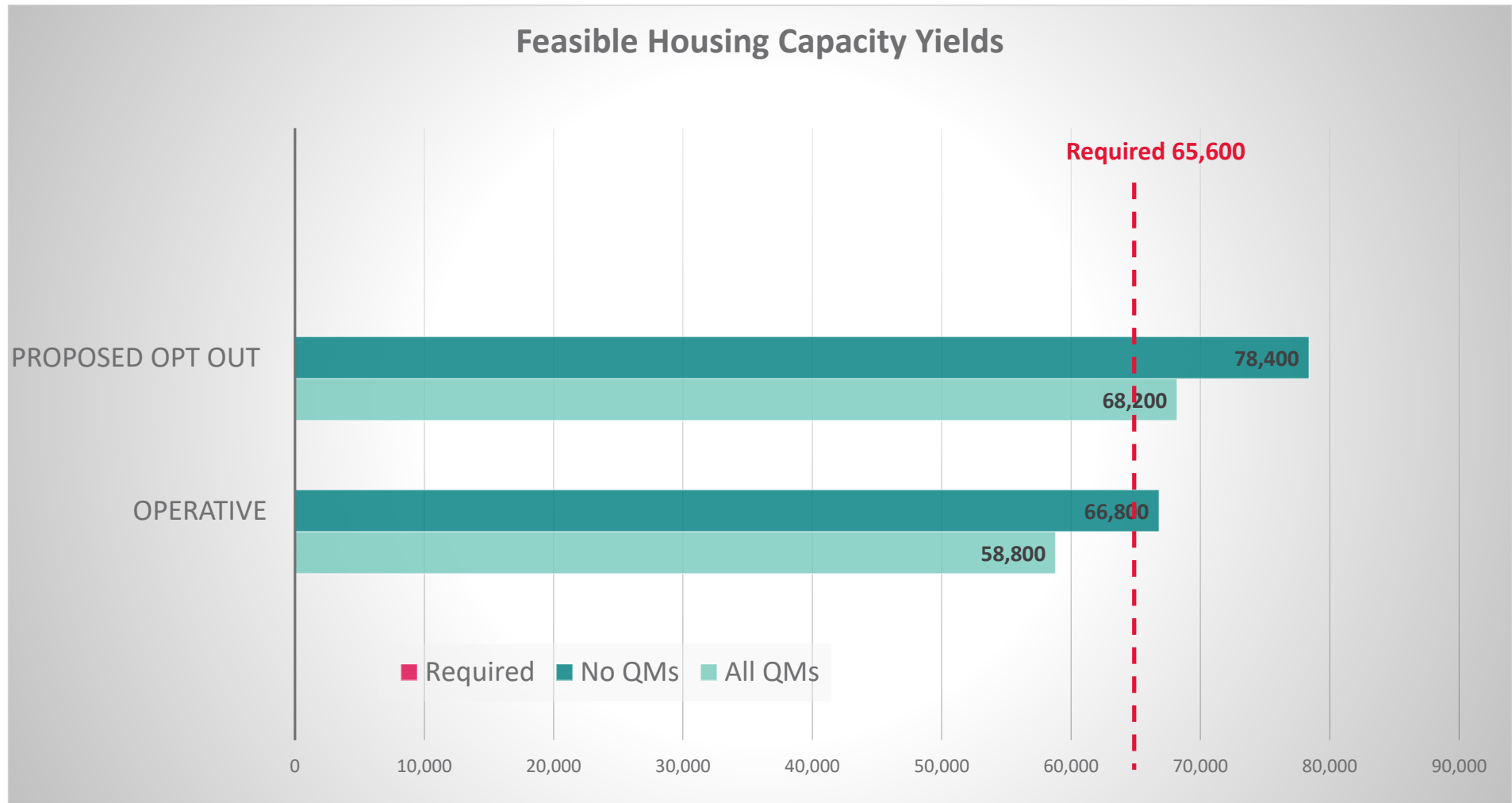
- First part: Geographic areas to decide on IHP recommendations - Need resolution 5.
- Second part: Decisions on the IHP Recommendations relevant to the geographic areas decided:
 - Zoning of new Medium density areas (MRZ and SPZ alternative zoning)
 - Qualifying matters applicable to the new medium density areas
 - Other related provisions and consequential amendments
- Third part: Agree delegations



Overview of Proposed MRZ and Councillor Prospective MRZ zones, includes:

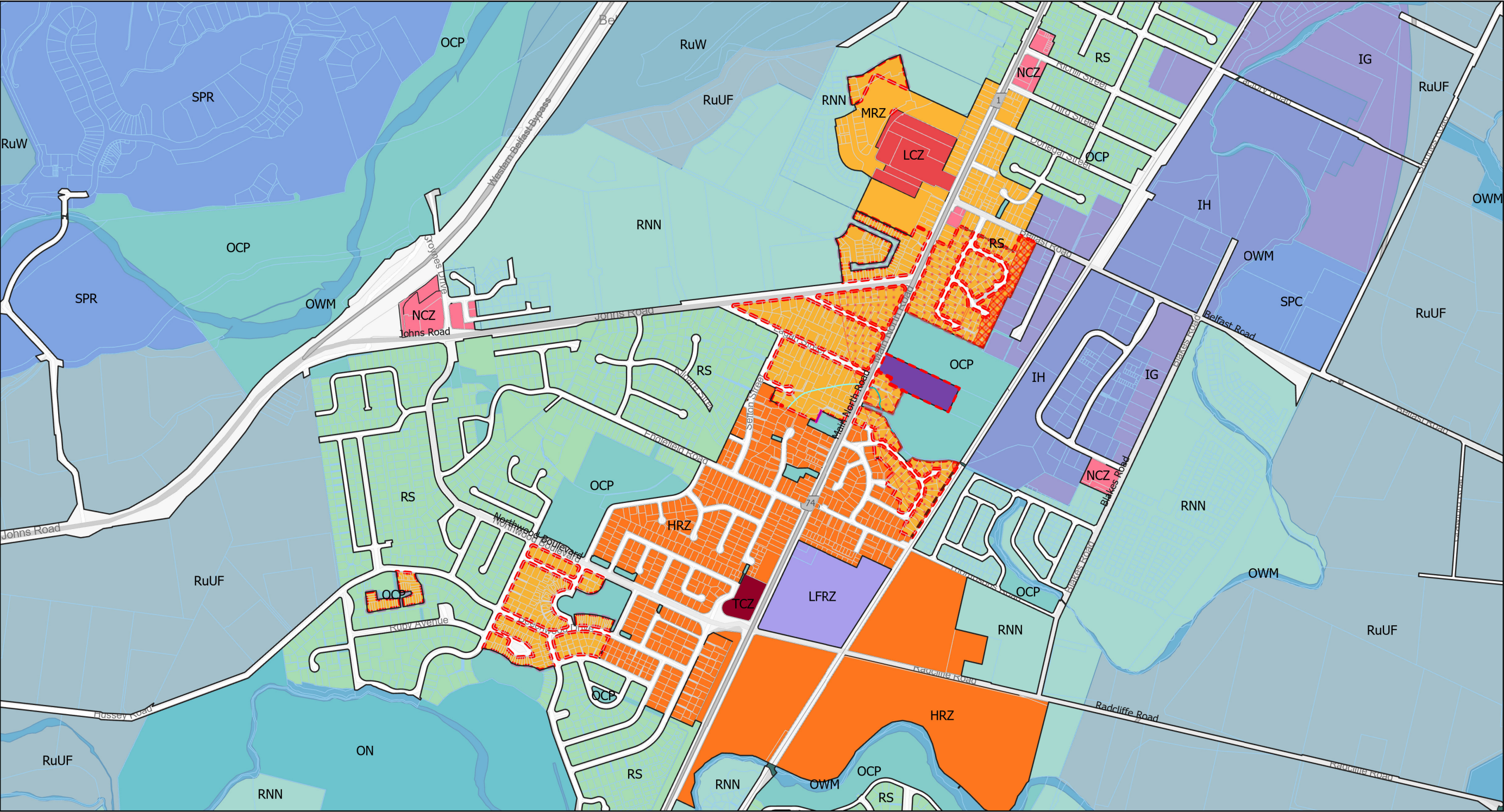
- Areas already zoned medium density including the RSDT zone;
- Some new medium density areas.

NB: Only relates to residential zones, no other zones changed, except the alternative zoning for Specific Purpose Zones



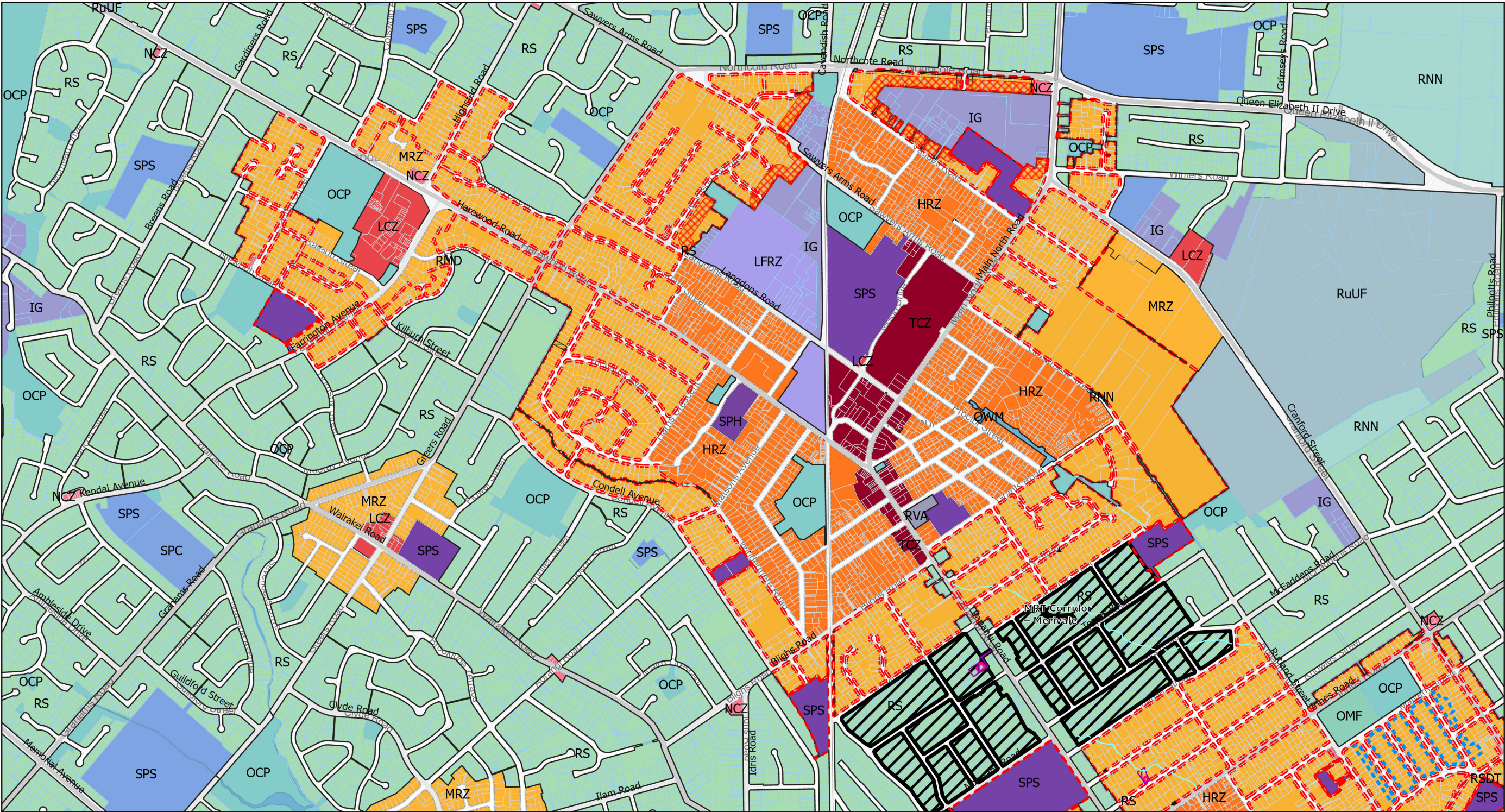
PC14 Decision (in part) and Withdrawal

3 September 2025

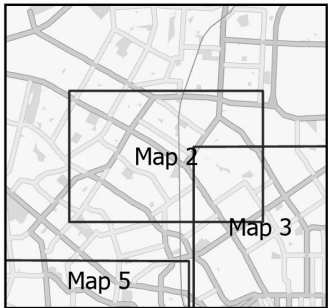
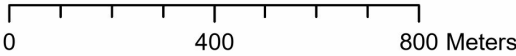


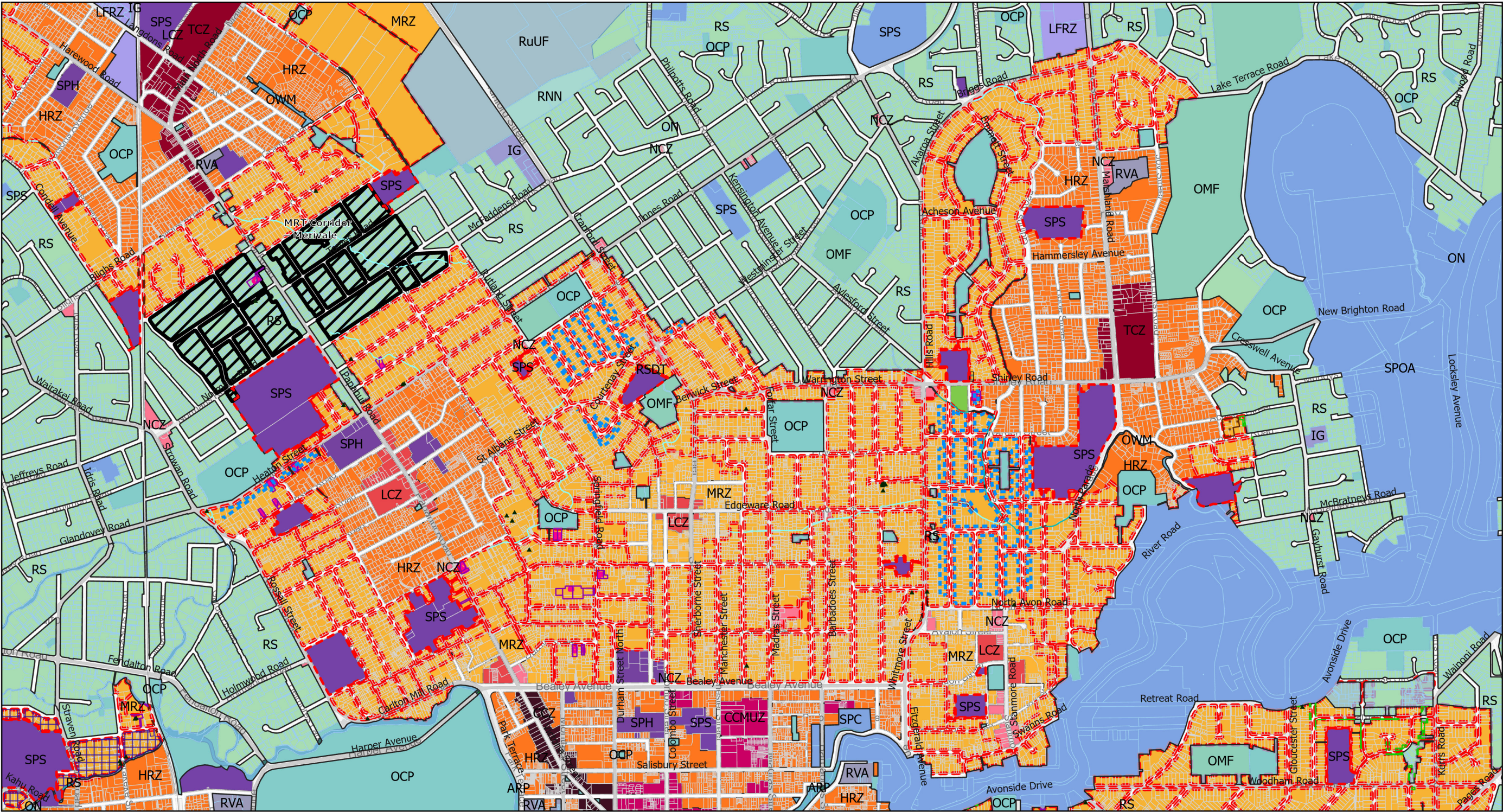
PC14 MRZ Council Opt Out - Proposal: Map 1

0 400 800 Meters

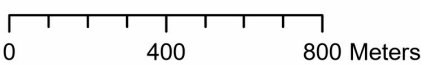


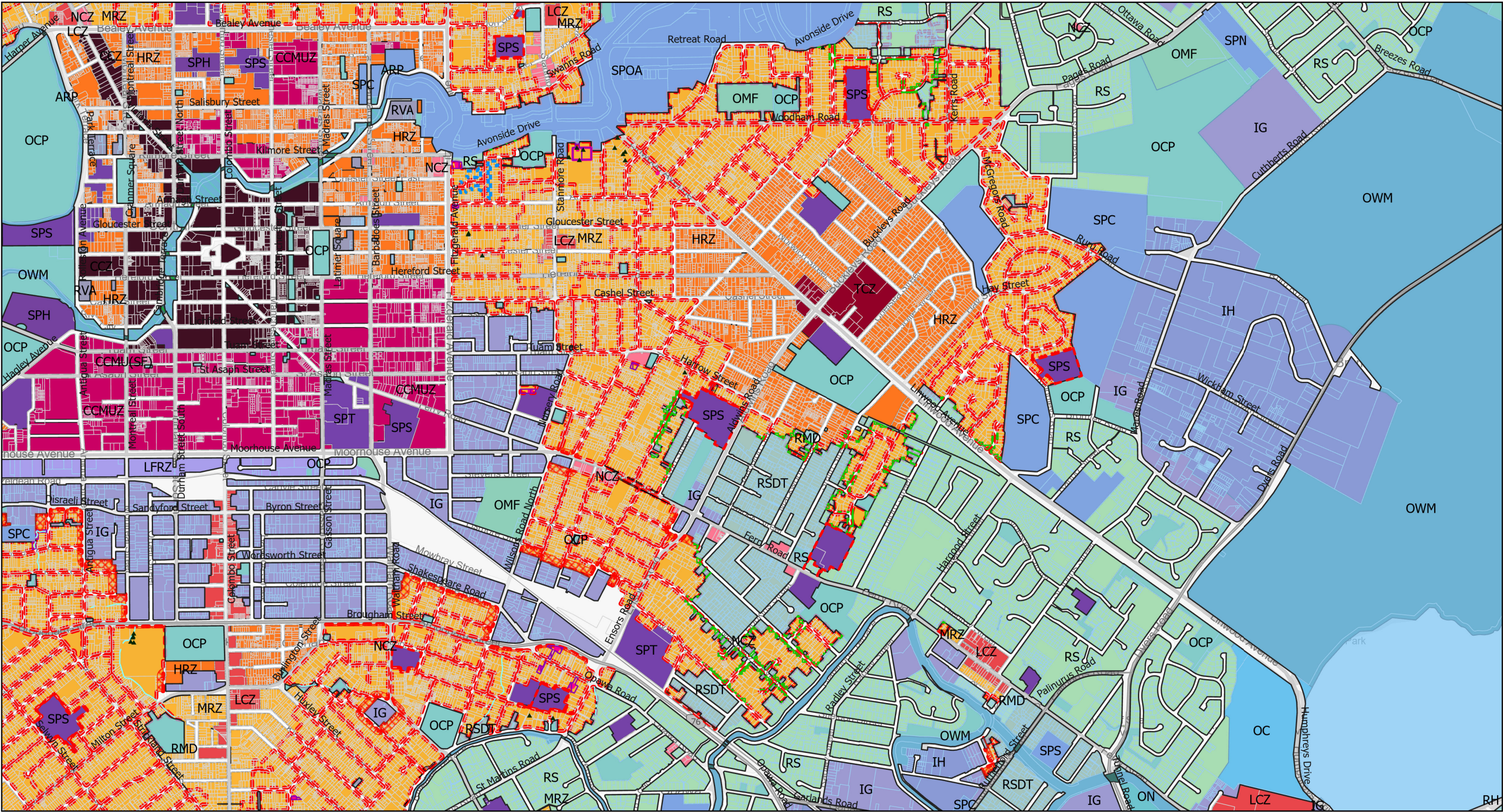
PC14 MRZ Council Opt Out - Proposal: Map 2



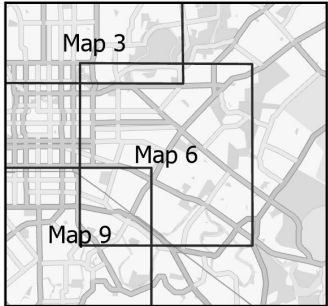
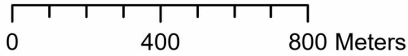


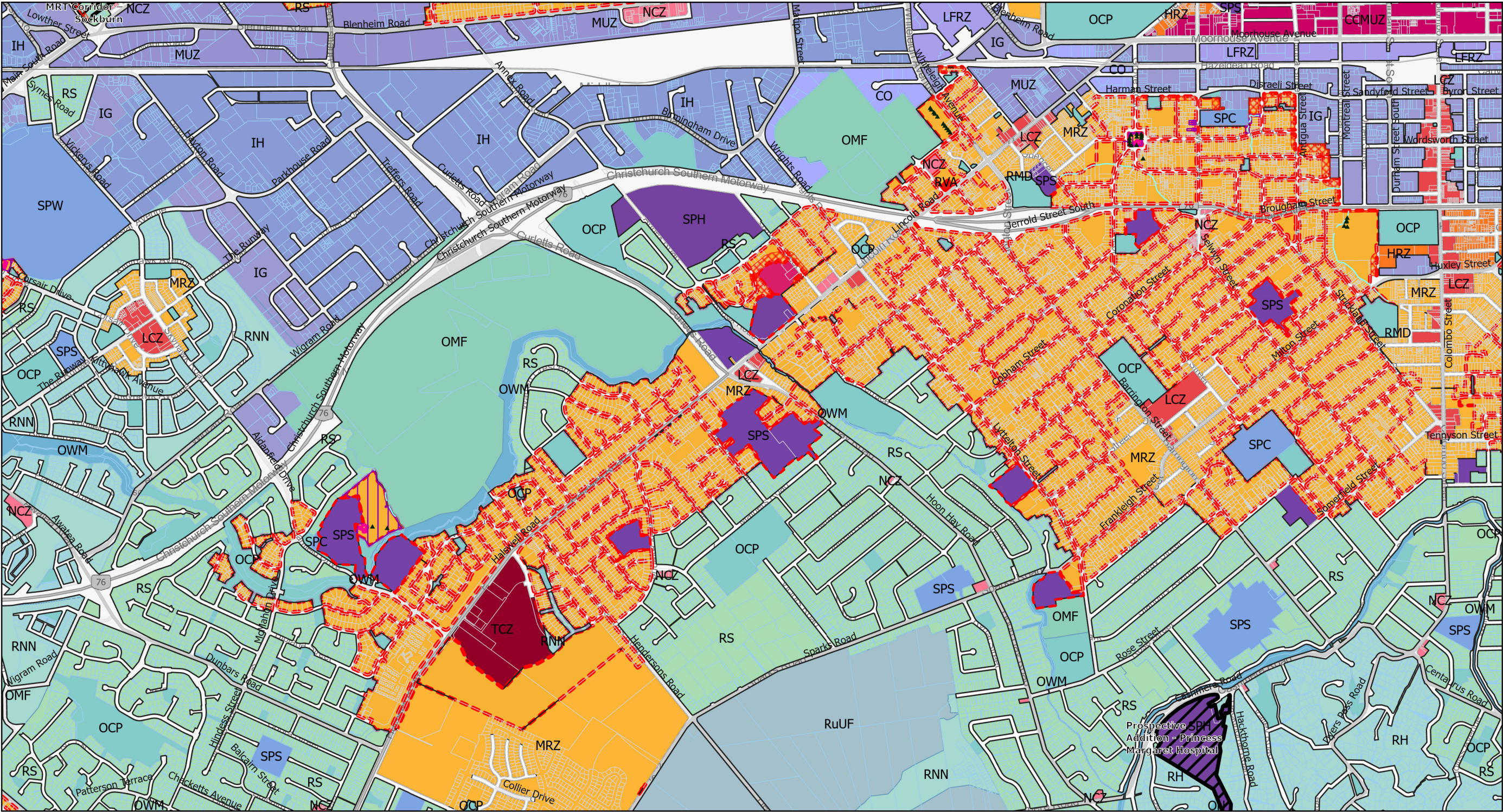
PC14 MRZ Council Opt Out - Proposal: Map 3





PC14 MRZ Council Opt Out - Proposal: Map 6





PC14 MRZ Council Opt Out - Proposal: Map 8

