

**Waitai Coastal-Burwood-Linwood Community Board  
Information Session/Workshop  
MINUTES ATTACHMENTS**

---

**Date:** Monday 7 July 2025  
**Time:** 3.45 pm  
**Venue:** Boardroom, Corner Beresford and Union Streets,  
New Brighton

---

<b>TABLE OF CONTENTS NGĀ IHIRANGI</b>	<b>PAGE</b>
<b>2. Pegasus Bay Cycle Trail - Proposal and Status</b>	
A. Pegasus Bay Cycle Trail Proposal.....	3

---



# Proposed Pegasus Bay Cycle Trail

1. Background to the Pegasus Bay Cycle Trail & Inter-regional Trail/s
2. Christchurch part of the Trail route options, preferred route
3. Sections: existing cycle provision, not existing divided non and scheduled
4. Ways forward (relative to CCC priorities) possibilities incl. governance models



## 1. Background to the PB - the Inter-regional Trail

- Ships Cove to Cathedral Square
- Hurunui Heartland Trail – what's in a name?
- Wheels to Wiapara
- Pegasus Bay Cycle Trail



# 1.

## **Background -Pegasus Bay Cycle Trail & Inter-regional Trail/s:**

### **Marlborough - Christchurch Trail “Hurunui Heartland Ride”**

### **2017 MOU btwn 5 District Councils**

Christchurch City Council  
Resolved to join the four  
other District Councils re a  
proposed Picton to  
Christchurch continuous cycle  
route, in signing a  
Memorandum of  
Understanding to confirm  
support for the project at a  
governance level for each  
Council.

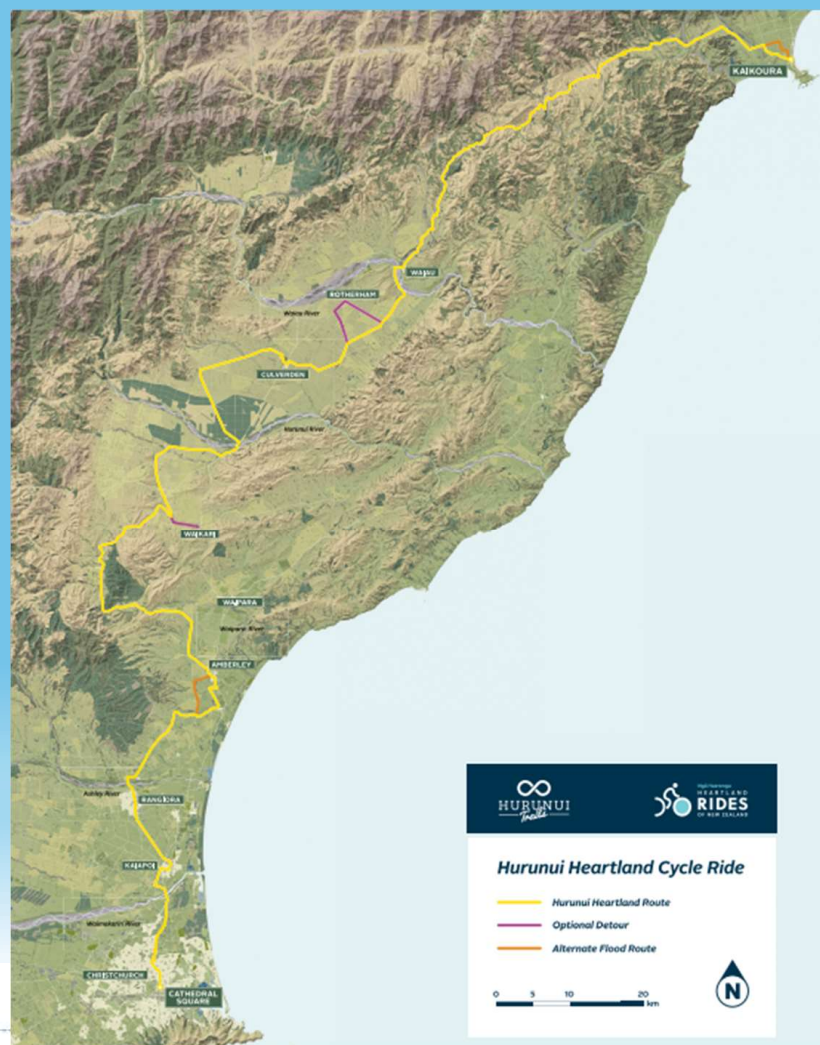


1.

## Background -Pegasus Bay Cycle Trail & Inter-regional Trail/s:

**Marlborough -  
Christchurch Trail  
“Hurunui Heartland  
Ride”**

**2017 MOU btwn 5  
District Councils**



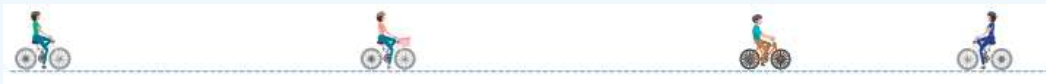
1.

## Background -Pegasus Bay Cycle Trail & Inter-regional Trail/s:

Between Picton &  
Christchurch

**Kaikōura– Picton  
2025 “Half  
completion”**

**“ Whale Trail “**





1.

## Background -Pegasus Bay Cycle Trail & Inter-regional Trail/s:

### Kaikōura- Picton

Milestone 2017 Marlborough Kaikōura Trail  
Trust formed



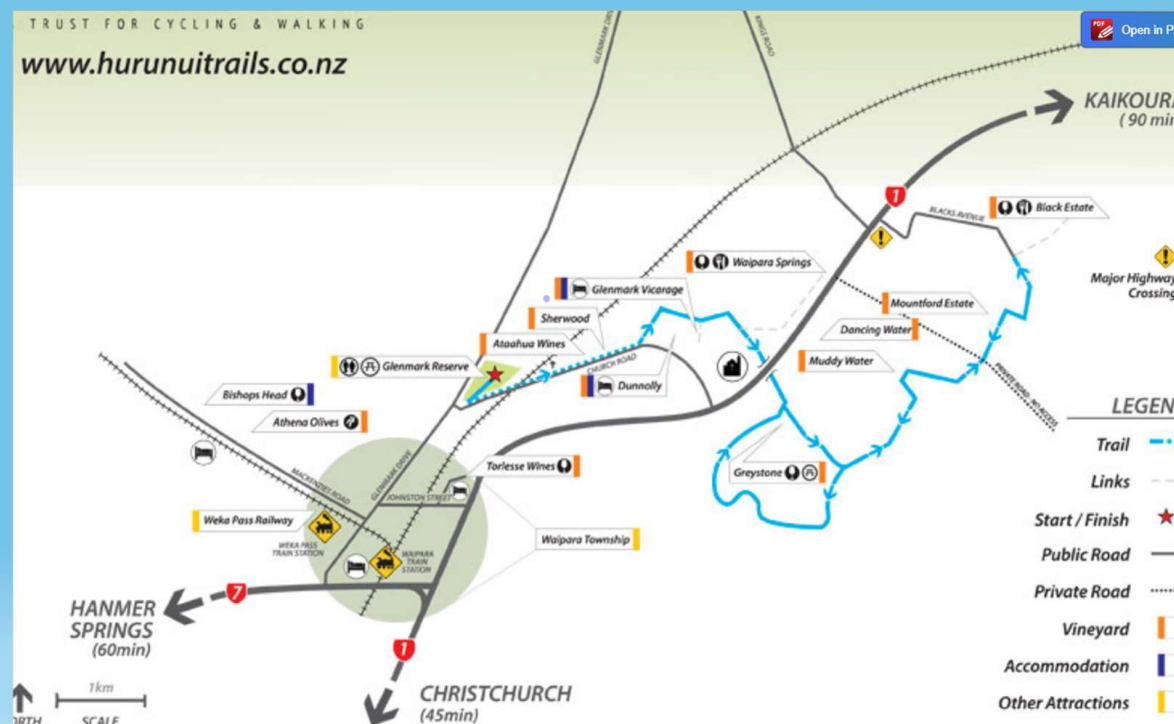


1.

## Background -Pegasus Bay Cycle Trail & Inter-regional Trail/s

2017 Wheels to  
Waipara or "Wheels  
to Wine"  
(Christchurch to  
Waipara wineries)

Pegasus Bay Cycle  
Trail



# 1. An early draft Pegasus Bay Cycle Trail Map



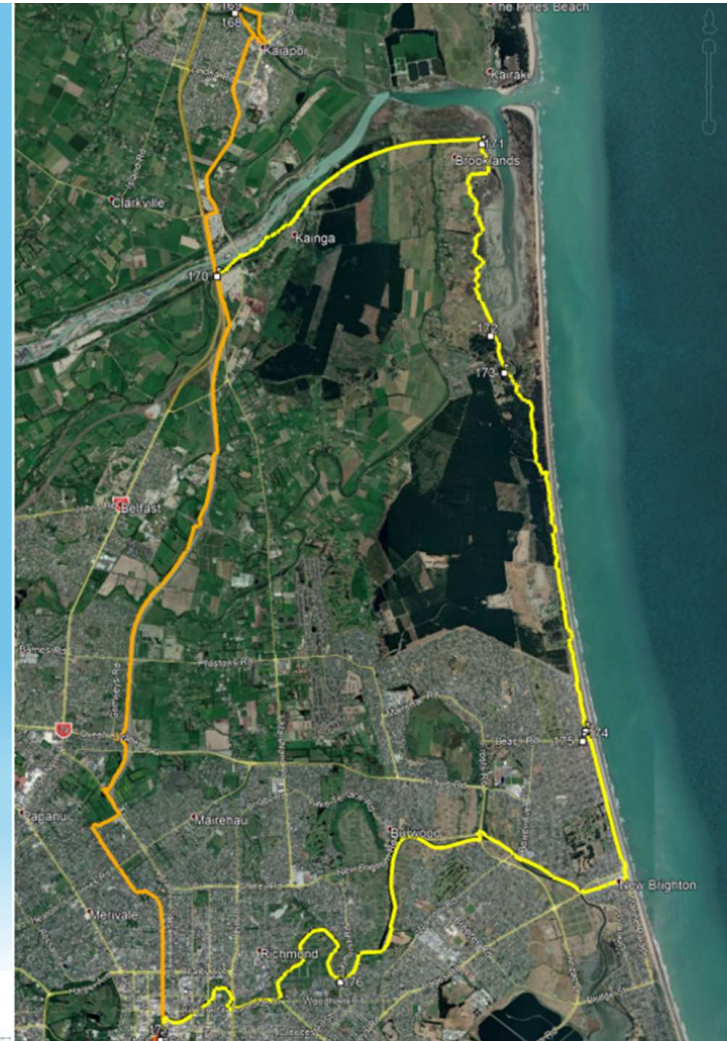
## 2. An early draft Pegasus Bay Cycle Trail Map



## 2. Christchurch part of the Hurunui Heartland Trail, route options

**Pegasus Bay Cycle Trail early draft  
(and Hurunui Heartland alternative)  
route = yellow.**

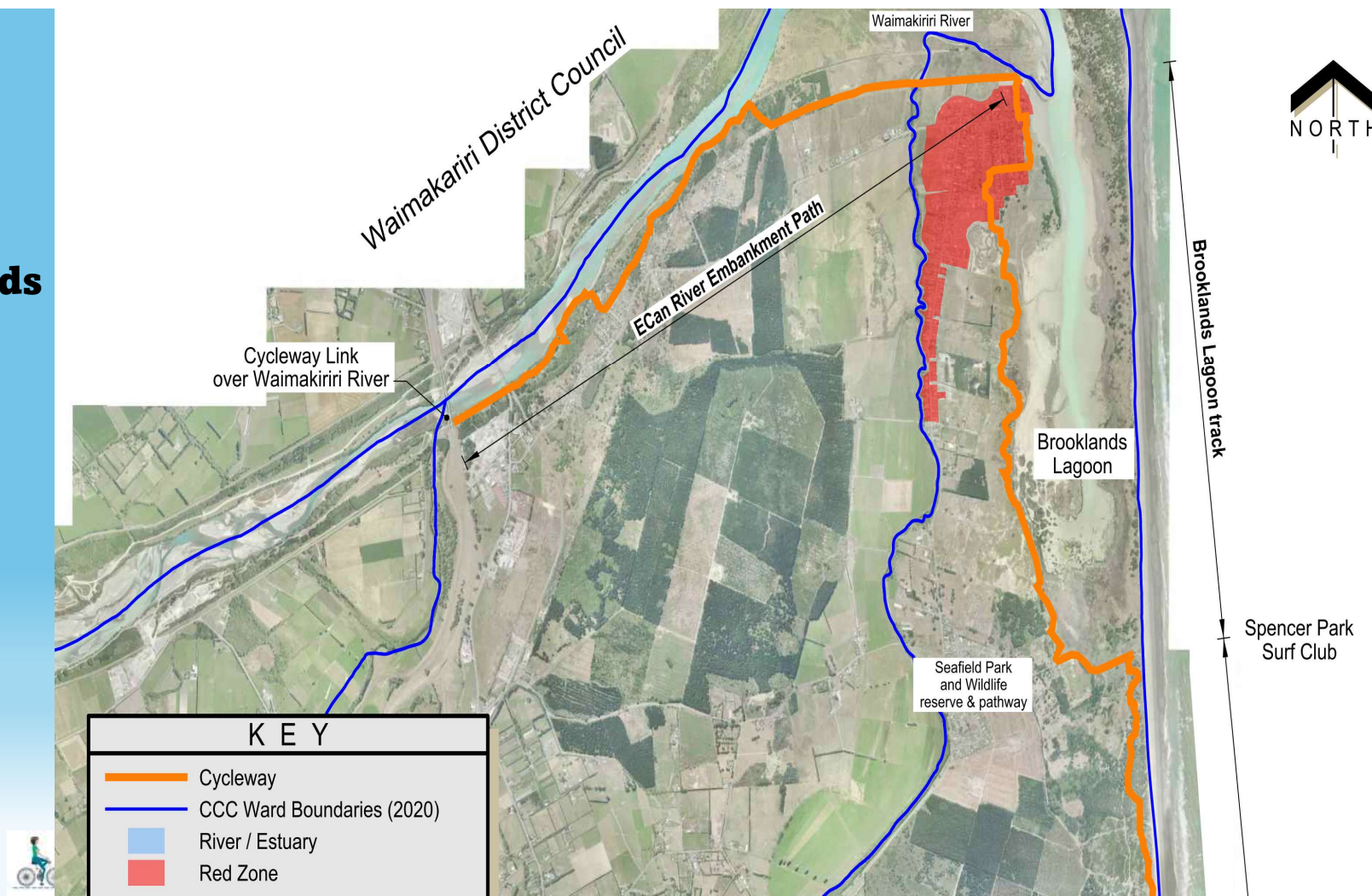
**Hurunui Heartland Ride primary  
route = gold**



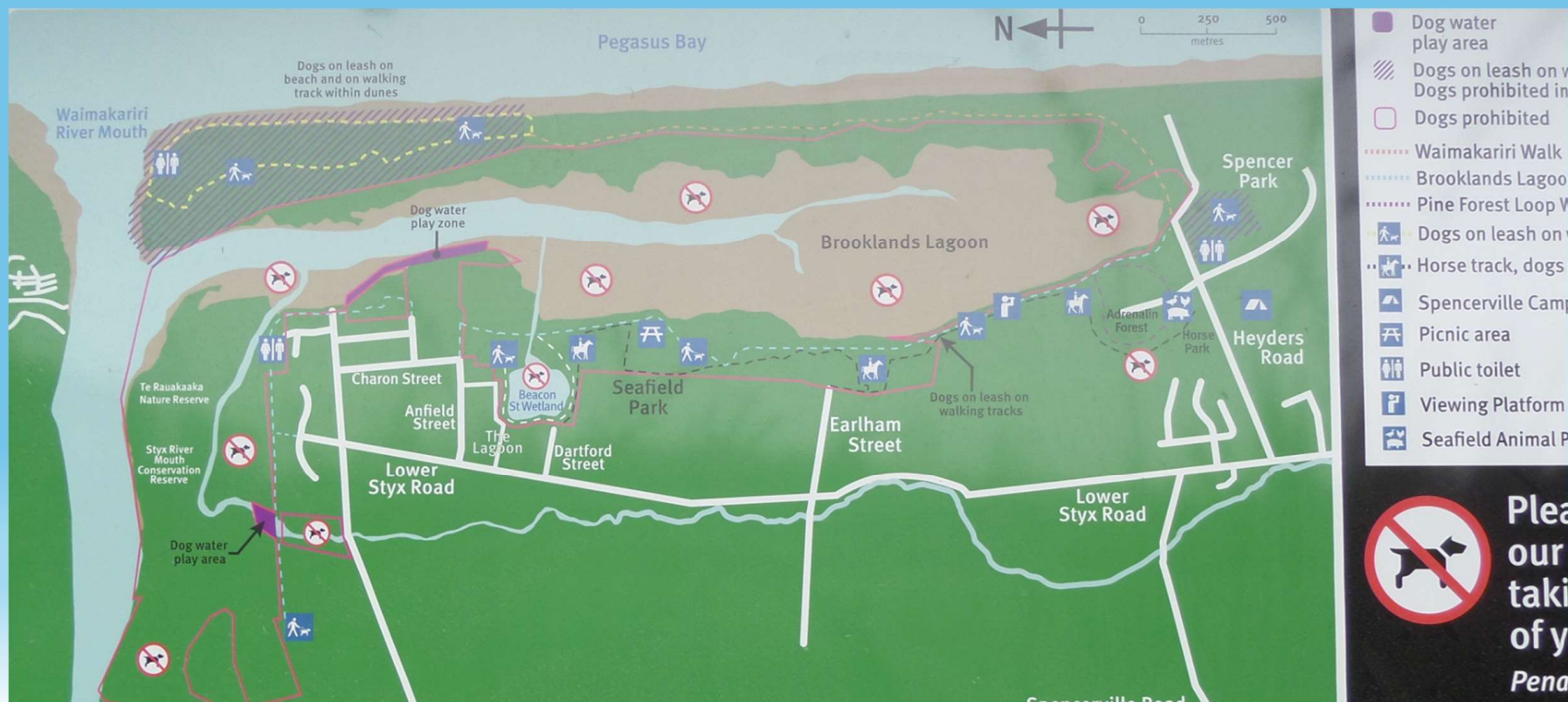


### 3.

## Brooklands



### 3. Brooklands



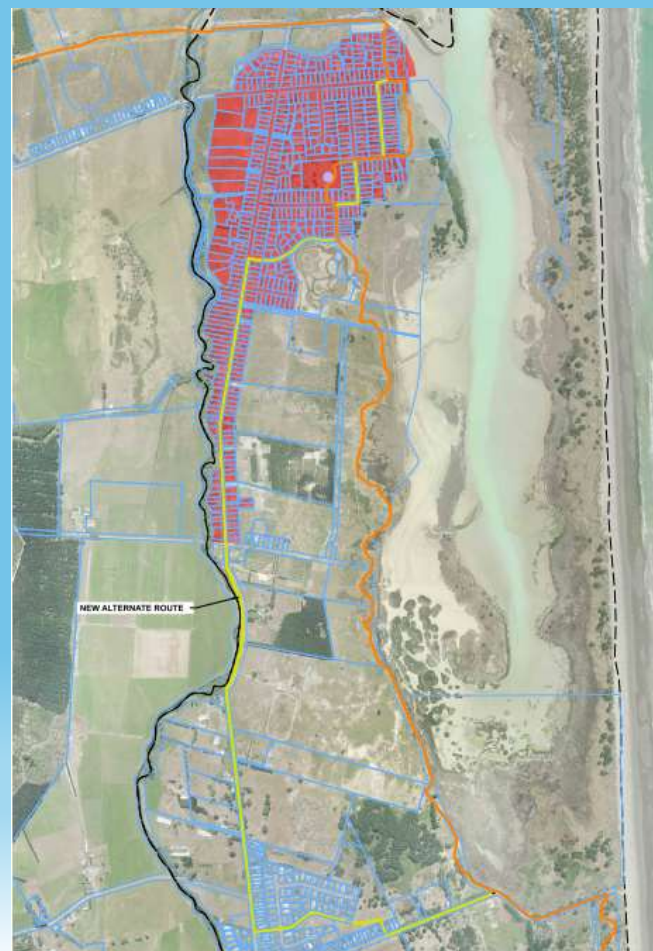


### **3. PBCT ChCH Sections: existing provision, none – divided, scheduled & non-scheduled**

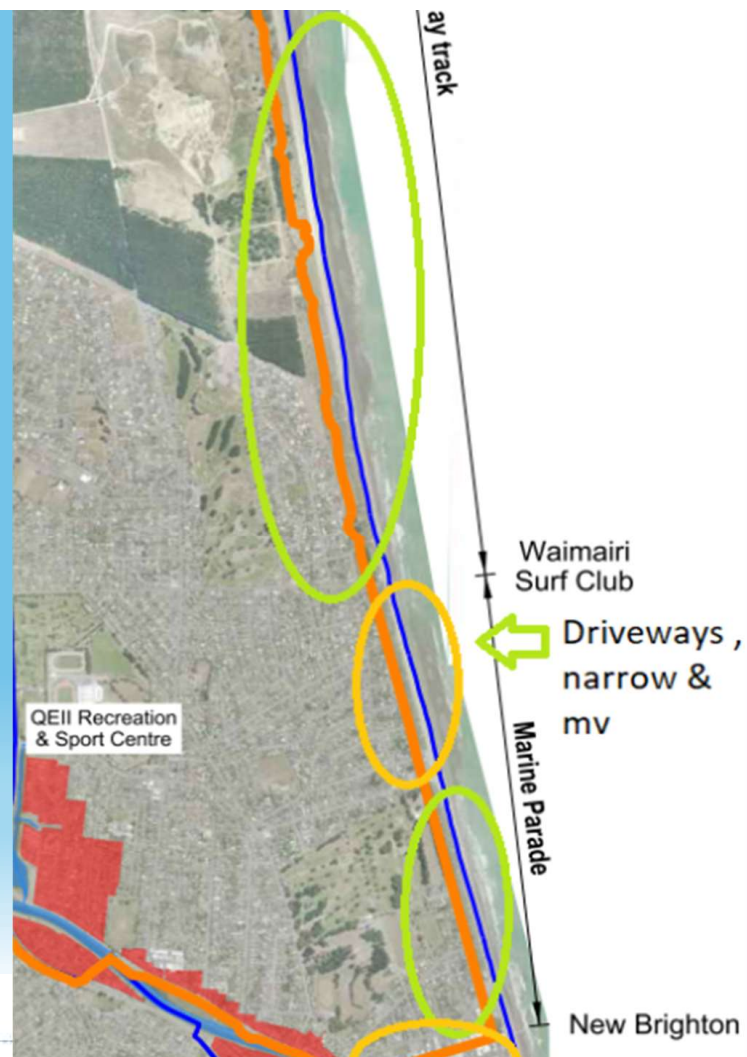
#### **Brooklands**

**gold = early draft route via walkway**

**Yellow = current draft route - Lower Styx Rd corridor**



### 3. PBCT Sections: Waimairi surf lifesaving club – New Brighton



### 3. Marine Parade@Nth New Brighton Surf Club

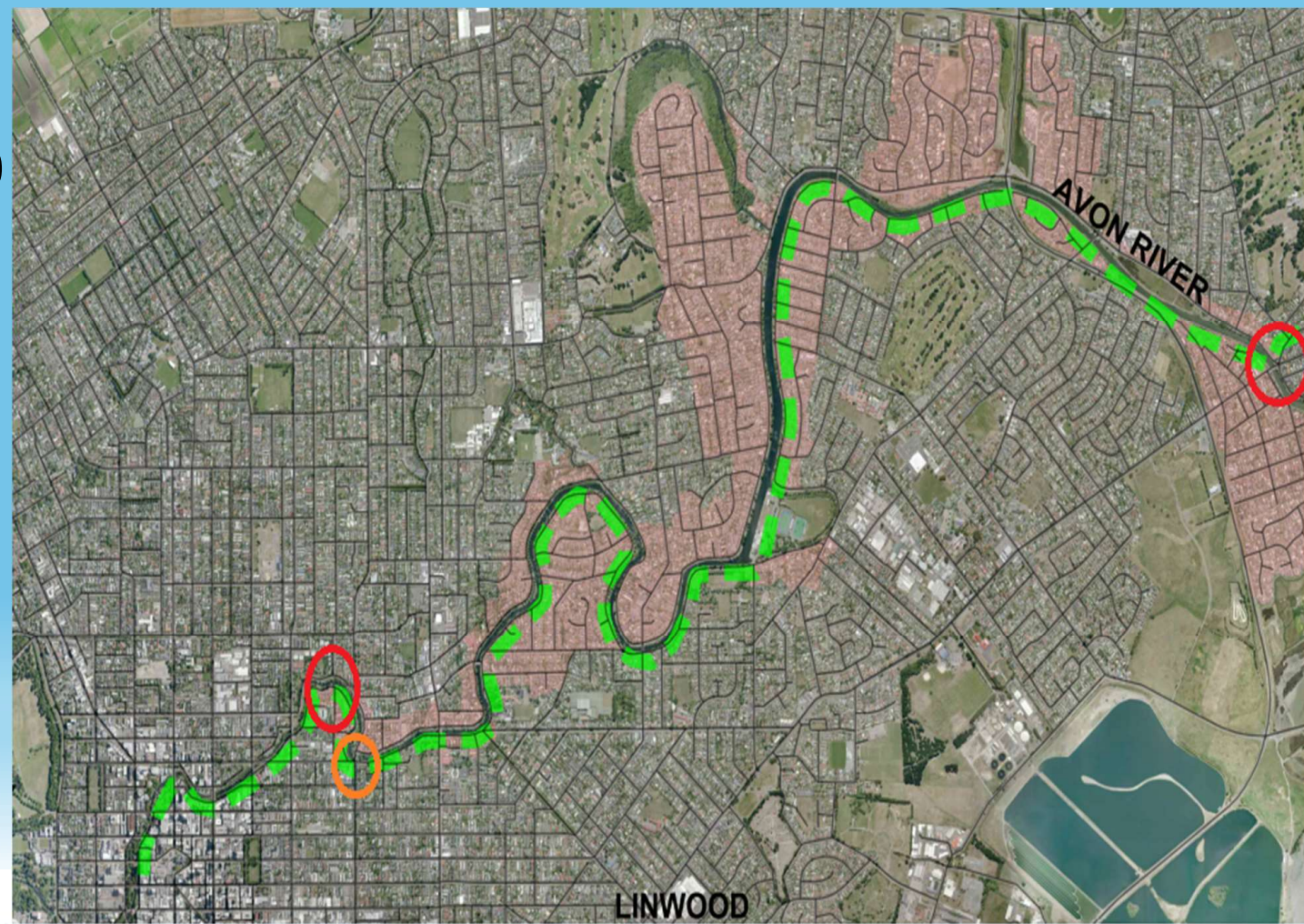


Item 2

Attachment A



### 3. PBCT Sections: New Brighton - CBD



## 4. Where to ?

Discussion:

Pegasus Bay Cycle Trail, without specific focus

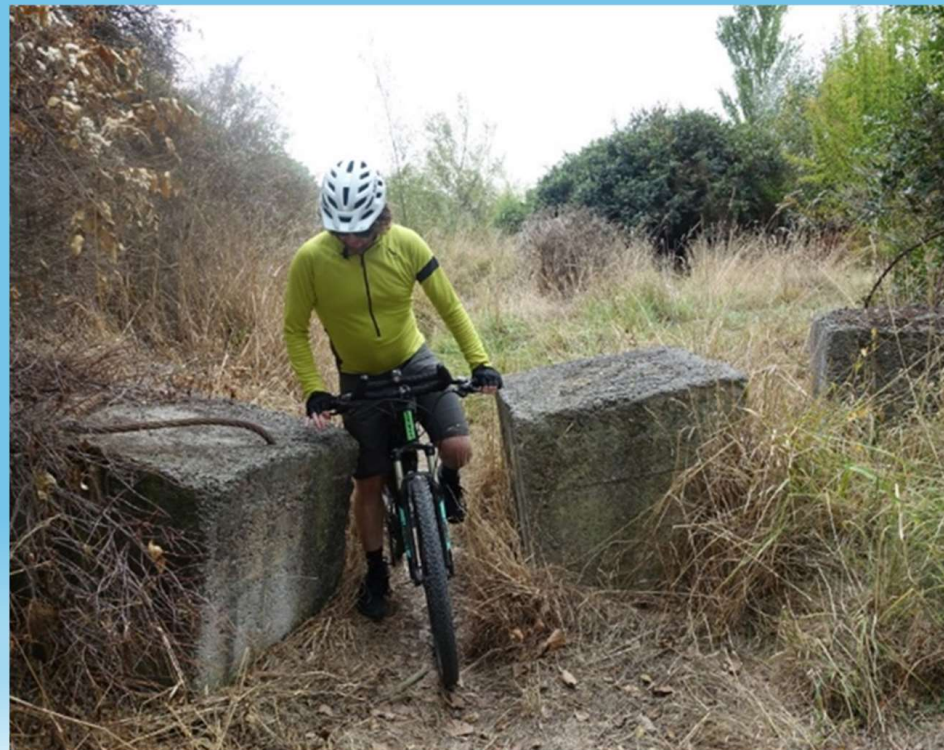
Focus options:

- Resource the assessment of a B/C
- Estimate demand
- Establish ROCs
- Governance model

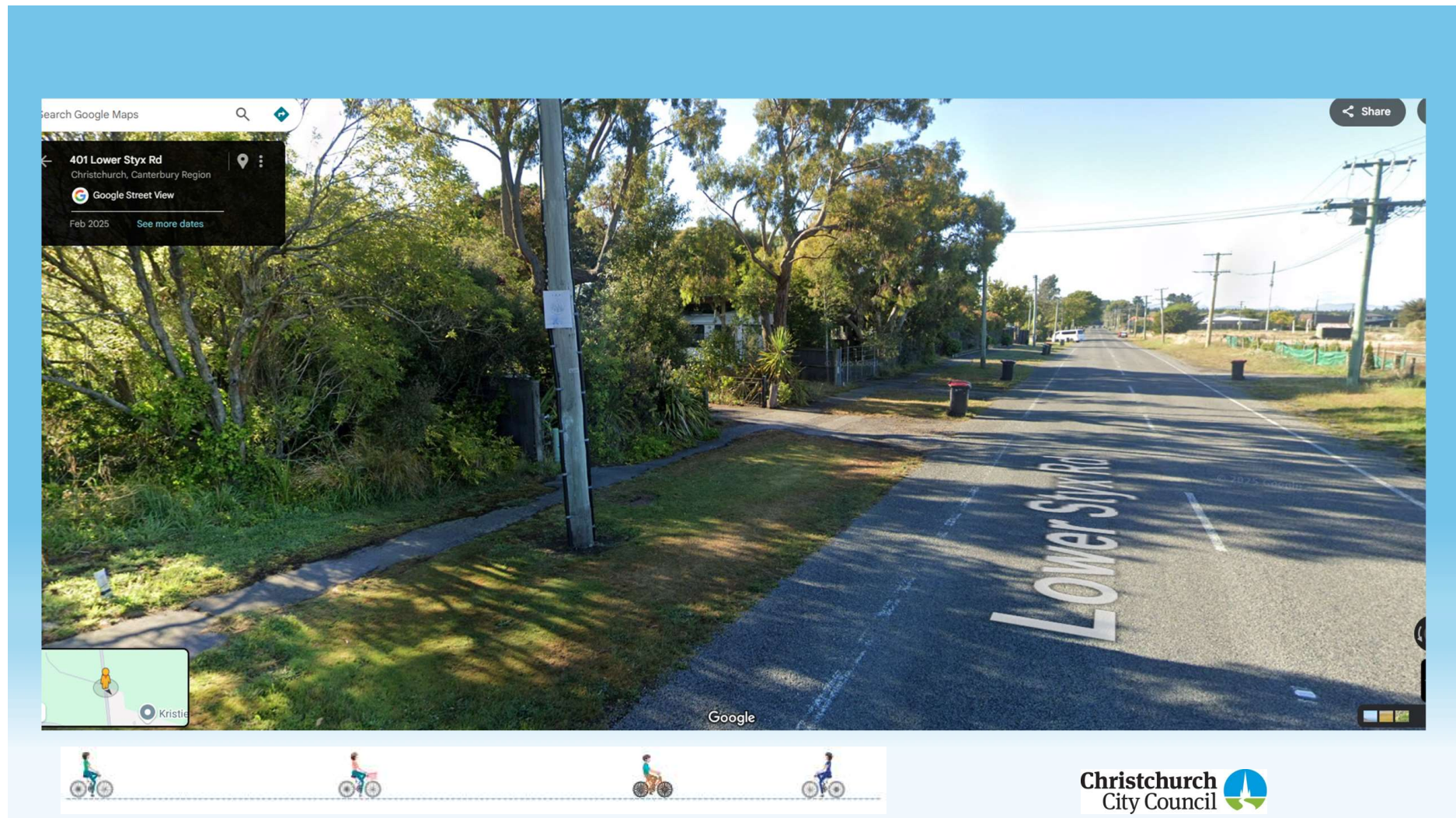




# Waimakariri Bridge to Brooklands Photo credit Johnathan Kennett

















## Lower Styx Rd 50 to 80kph

