

**Waipuna**  
**Halswell-Hornby-Riccarton Community Board**  
**MINUTES ATTACHMENTS**

---

**Date:** Thursday 10 July 2025  
**Time:** 4.31 pm  
**Venue:** Rārākau: Riccarton Centre,  
199 Clarence Street, Christchurch

---

<b>TABLE OF CONTENTS NGĀ IHIRANGI</b>	<b>PAGE</b>
<b>4.1. Public Forum - Te Kuru Wetlands Interpretive Centre Project</b>	
A. Presentation - Cashmere Rotary Club, Te Kuru Wetlands Proposal.....	3
<b>5.1. Deputations by Appointment - Calverton Place Proposed No Stopping Restrictions</b>	
A. Presentation - Ivan Martin and Erin Hamilton, Calverton Place Proposed No Stopping Restrictions .....	8
<b>5.3. Deputations by Appointment - Oaklands School Safety Improvements - Dunbars Road Signalised Crossing</b>	
A. Presentation - Matt Stewart, Oaklands School Safety Improvements - Dunbars Road Signalised Crossing.....	13
<b>17. Halswell School Safety Improvements</b>	
A. Presentation - Halswell School Safety Improvements .....	24
<b>18. Oaklands School Safety Improvements</b>	
A. Presentation - Oaklands School Safety Improvements.....	29
<b>19. Oaklands School Safety Improvements - Dunbars Road Signalised Crossing</b>	
A. Presentation - Oaklands School Safety Improvements - Dunbars Road Signalised Crossing.....	34
<b>20. Knights Stream School Safety Improvement - Signalised Crossing on Halswell Junction Road</b>	
A. Presentation - Knights Stream School Safety Improvement - Signalised Crossing on Halswell Junction Road.....	39

---





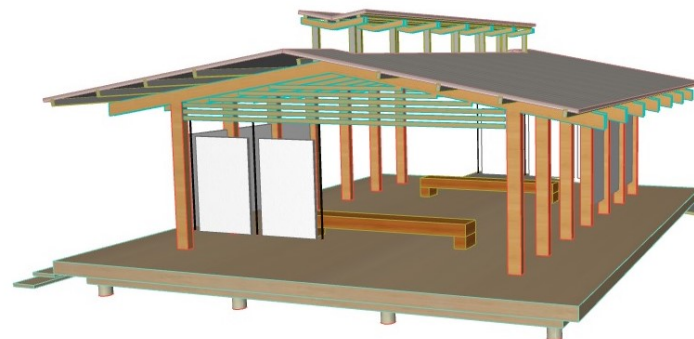
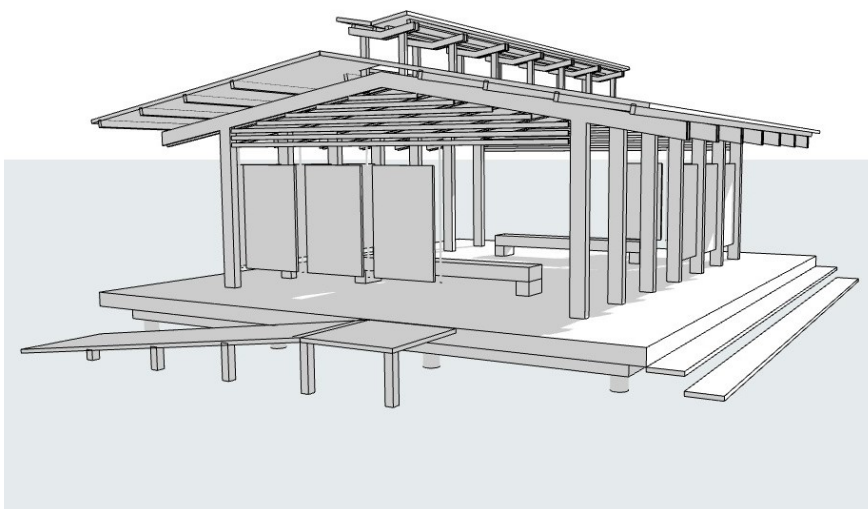


Cashmere Rotary Club



**Te Kuru  
Proposal  
2025**

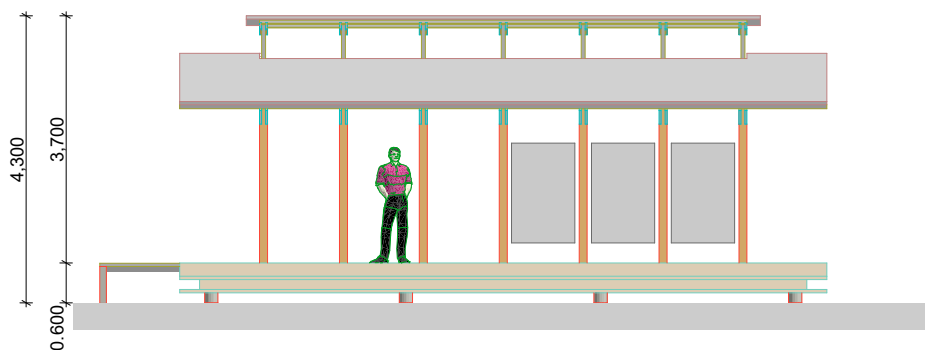
“We present to you our project proposal to celebrate the 50<sup>th</sup> anniversary of our Rotary Club. We intend to focus on community youth and education.”



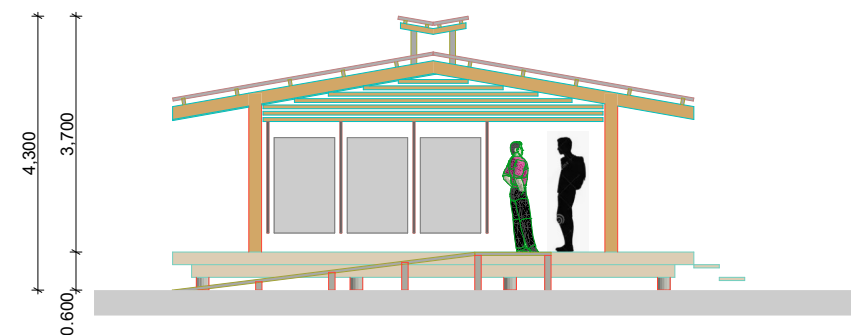
“Within our territorial boundaries are the world class environmental assets of the spring fed Cashmere Stream and Te Kuru Wetlands. These assets are already attracting strong public usage as a recreational space and by schools as an environmental educational space.”



“Our proposal, for which we seek your support, is that our Club majority fund and manage an architecturally designed wharenui (shelter) within Te Kuru and adjacent to Cashmere Stream. The main purpose of this wharenui is to provide an education hub.”



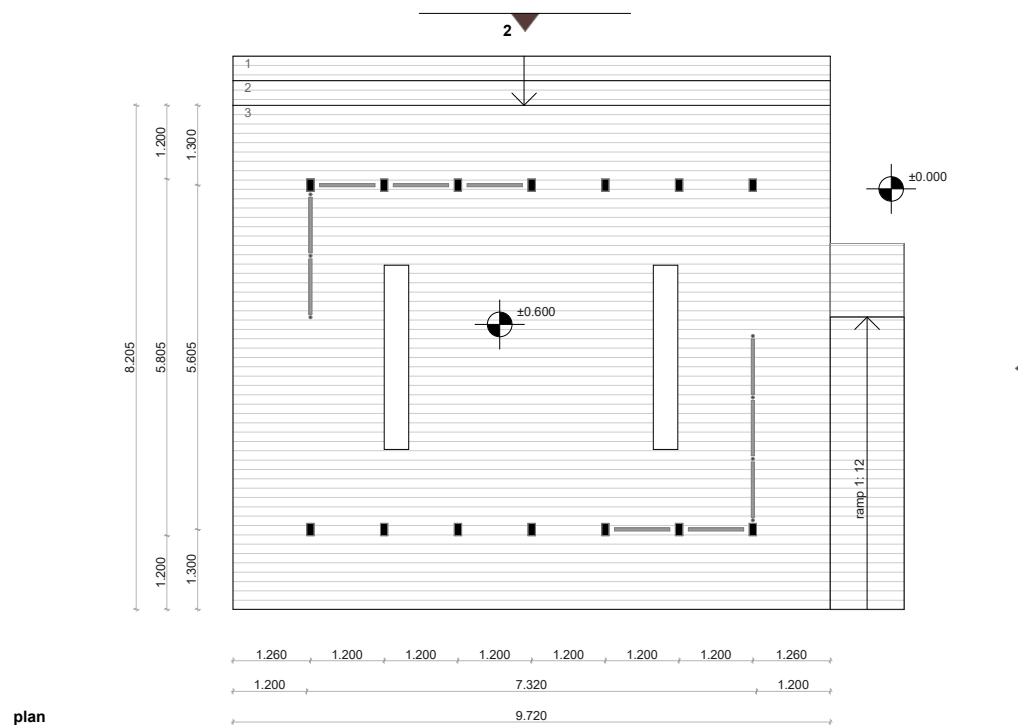
elevation 2



elevation 1

“We propose a structure constructed of low maintenance and recycled materials, incorporating interpretation panels and providing all weather protection.”

“We are encouraged by the support voiced for such a project by school leaders who currently monitor sites within the wetland and Cashmere Stream, e.g Cashmere High School, Rowley School and Hillmorton High School.”



### DESIGN CONSIDERATIONS

- The structure is elevated on piles to sit above the flood level, allowing floodwaters to flow beneath the platform. This also provides elevated views over Te Kuru.
- The roof overhangs the line of structural posts by approximately 1.2 metres, creating spaces on the deck, both inside and outside the post line. Exhibition panels can be displayed and viewed from both sides within this space.
- Two wide steps along the entire northern edge of the deck provide informal seating, accommodating a full class of students. There is potential to further extend the roof over this area, to offer additional shade and weather protection.
- A roof light introduces additional natural light into the structure. Rainwater from the internal gutter of the roof light can be directed through a chain drain, which passes through a grated opening in the decking — within the interior space — turning the drainage element into a visible and engaging design feature.

### MATERIALS

#### STRUCTURE

- structural timber: Oregon or Macrocarpa
- use the lowest treatment levels as possible to minimise environmental impact and maintain material integrity

#### ROOF

- Corrugated Colorsteel sheeting
- Durable, low-maintenance, and appropriate for local weather conditions

#### DECKING

- Recycled hardwood
- Laid with gaps to allow dirt and water to fall through, reducing maintenance needs and enhancing longevity

#### EXHIBITION PANELS

- Approximate size: 1500 x 900 mm
- Constructed from marine-grade plywood
- Suspended using a simple steel rod system for flexibility and ease of installation

### **FOR MORE INFORMATION, PLEASE CONTACT:**

**ALAN MORGAN: 0274 356 615   [A.MORGAN@XTRA.CO.NZ](mailto:A.MORGAN@XTRA.CO.NZ)**

**KEN ROUSE: 0274 794 841   [ROUSEKEN@XTRA.CO.NZ](mailto:ROUSEKEN@XTRA.CO.NZ)**





**Presentation - Calverton Place Proposed No Stopping Restrictions**















# Improving Pedestrian Safety

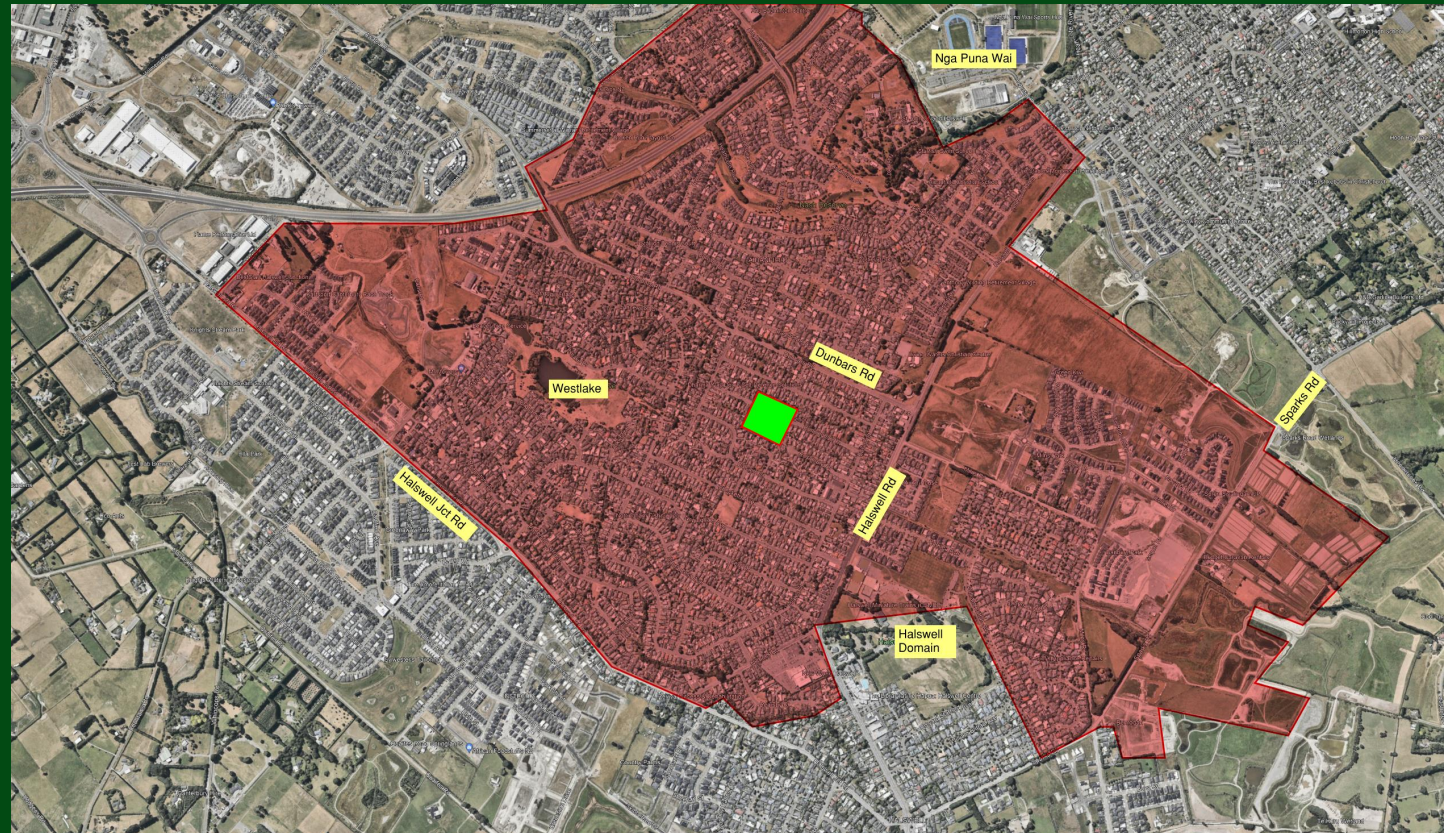
## Oakland School Students Cobra Street

Matt Stewart

Parent - Oaklands School



# Oakland School Zone









## Cunningham Place

- No Parking – 20m from entrance
- 3 Min Parking – 8:15am - 9:15am & 2:30pm - 3:30pm





## Jarrow Place

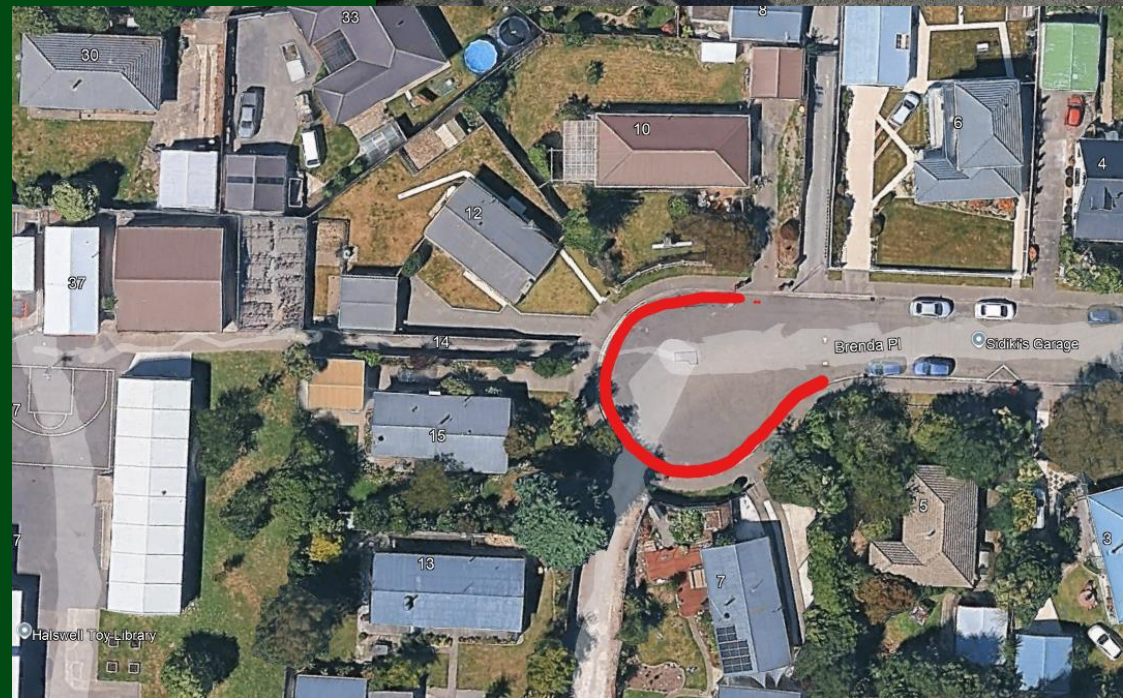
- No stopping 8am – 5pm – 15m from entrance





## Brenda Place

- No Stopping 8:30am – 9:15am & 2:30pm – 3:30pm





# Cobra Street

- Through traffic
- Near 3 way intersection
- No parking restrictions
- 2 School Signs
- Near 3 way intersection



Oaklands School has a file of  
“near misses” on Cobra Street















# Make Cobra Street Exit Safe

Increase safety by improving **visibility** to students and drivers

- . At entrance/ exit point - No stopping during pickup & drop off hours
- . New signage warning drivers of the school

# Halswell School - Te Kura O Te Tauawa Safety Improvements

Gemma Dioni

10 July 2025

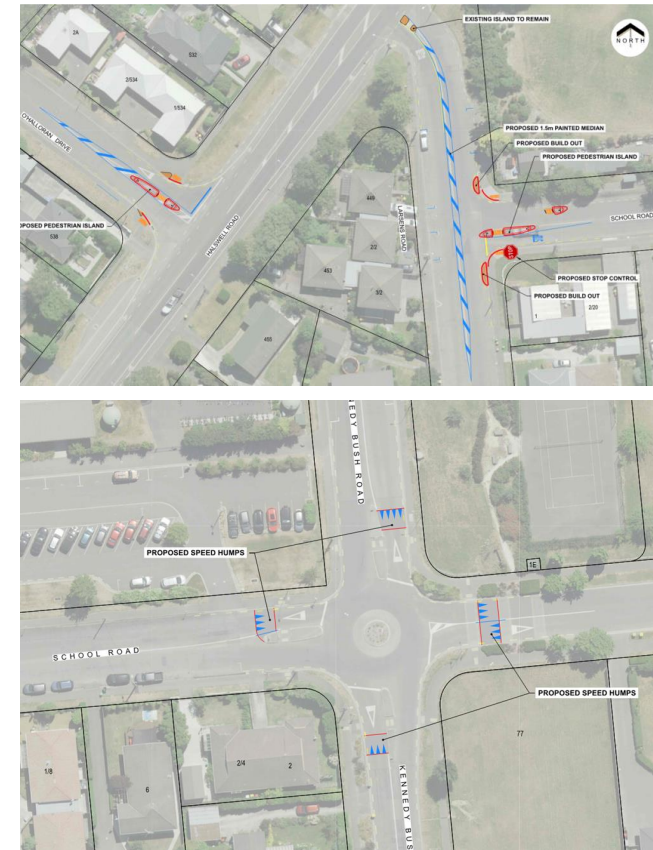
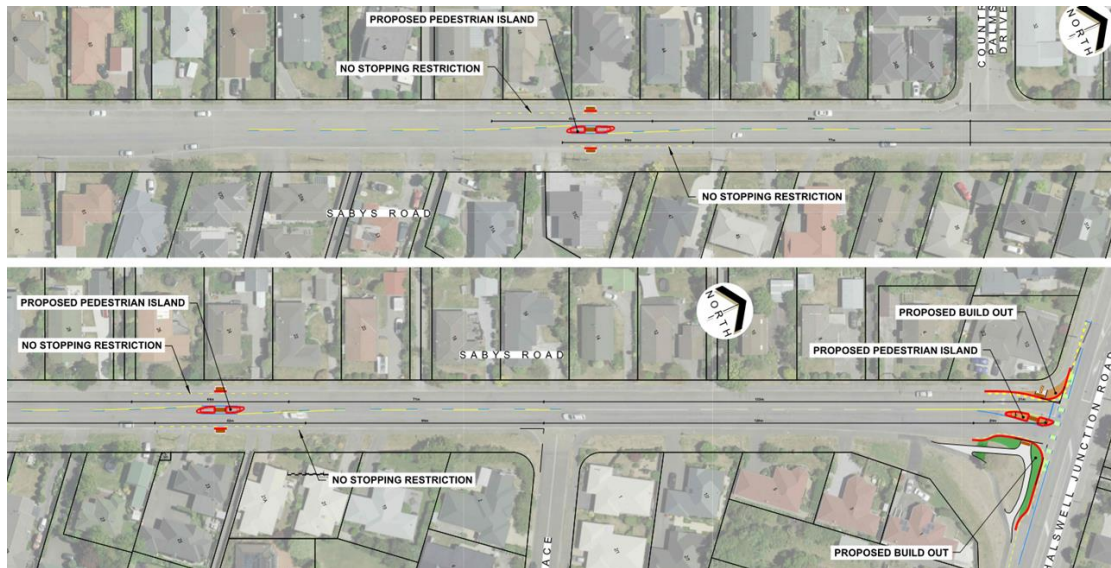
## Halswell School Safety Improvements

---

- Halswell School improvements seeks to address:
  - Two Notice of Motions for Sabys Road
  - Concerns raised through the Halswell School Travel Plan
- Students (Georgia, Lotty & Nathan) during the public forum on 12/06:
  - *Refuge island on O'Halloran Drive definitely needed as cars can't right turn on to Halswell Road and they turn left and then u-turn at O'Halloran Drive. Problem for kids trying to cross the road as they are not sure what the car is doing.*
  - *Roundabout is problem for children walking, not patrolled by teachers. Would like speed humps to ensure that cars coming into the roundabout don't keep going so fast.*
  - *Having the refuge islands will help make Sabys Road safer.*



## Halswell School Safety Improvements





## Consultation summary

### Sabys Road (42 submitters provided feedback)

- Support – 28
- Somewhat support – 5
- Oppose – 7
- Did not state - 4

### Larsens Road (26 submitters provided feedback)

- Support – 19
- Somewhat support – 5
- Oppose – 2

### O'halloran (25 submitters provided feedback)

- Support – 21
- Somewhat support – 3
- Oppose – 1

### Kennedys Bush Road (33 submitters provided feedback)

- Support – 16
- Somewhat support – 12
- Oppose – 5

# Over to you

# Oaklands Te Kura o Ōwaka School Safety Improvements

Gemma Dioni

10 July 2025

## Oaklands Safety Improvements

---

- Oaklands School improvements seeks to address:
  - Notice of Motion for Dunbars Road
  - Concerns raised by the school to our Travel Demand Team
- Students (Griffin, Toby and River) during the public forum on 12/06:
  - *Think this is good as it will make it easier to walk and bike to school as it will make it easier to cross. Will also make cars slow down as we have seen cars speed through the roundabout causing near misses.*
  - *Ensign Street crossing. This proposal would make it safer crossing for kids to get home and use the bus stop. There is no safe crossing.*
  - *Lillian St crossing. This is good because kids can't see if kids are turning. Cars turn really fast when they are waiting in the middle of the road.*

# Oaklands School Safety Improvements



## Consultation summary

### Dunbars Roundabout (47 submitters provided feedback)

- Support – 23
- Somewhat support – 7
- Oppose – 12
- Did not state - 2

### Lillian Street island (21 submitters provided feedback)

- Support – 18
- Somewhat support – 2
- Oppose – 1

### Ensign Street (28 submitters provided feedback)

- Support – 15
- Somewhat support – 5
- Oppose – 5
- Did not state - 3

### Lillian Street no stopping (18 submitters provided feedback)

- Support – 12
- Somewhat support – 4
- Oppose – 2

# Over to you



# Oaklands Te Kura o Ōwaka School Safety Improvements

Gemma Dioni

10 July 2025

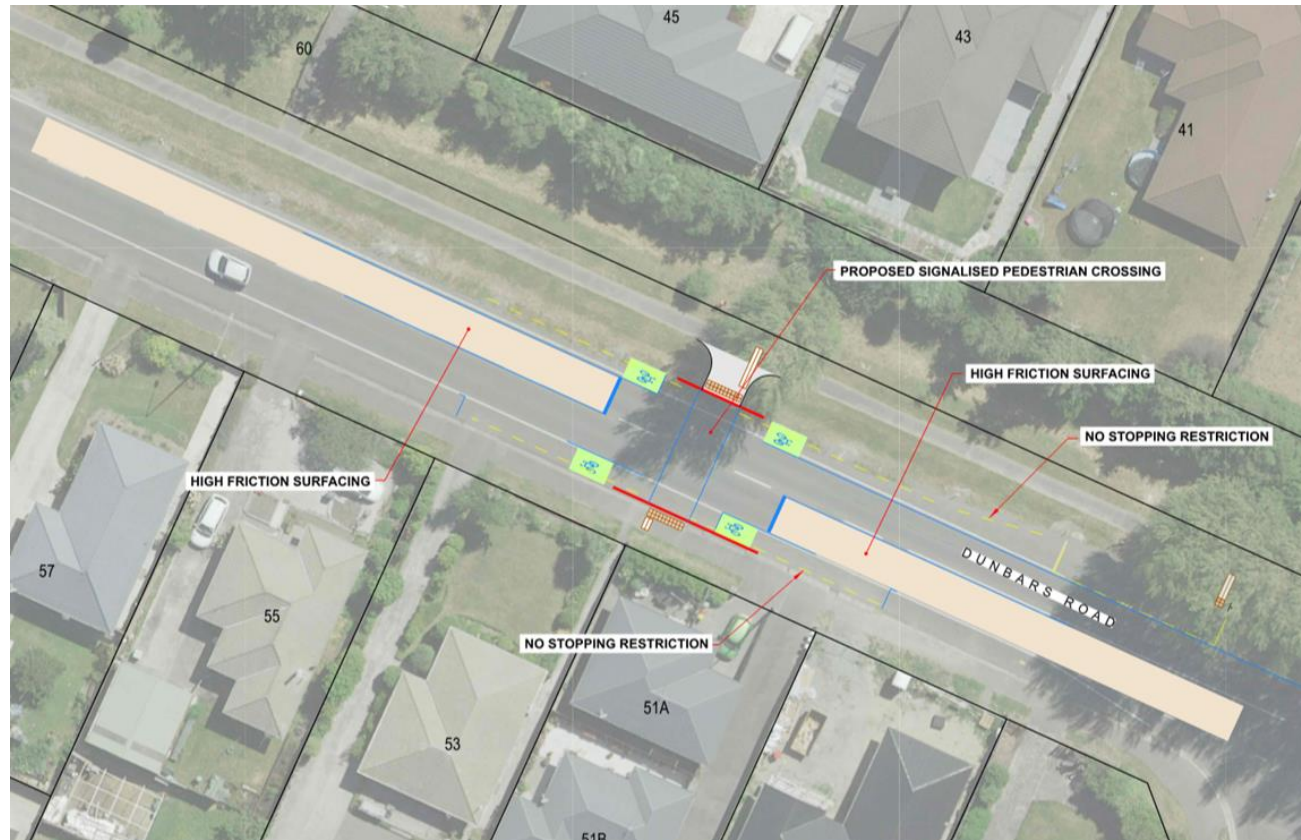


## Oaklands Safety Improvements

---

- Oaklands School improvements seeks to address:
  - Notice of Motion for Dunbars Road
  - Concerns raised by the school to our Travel Demand Team
- Students (Griffin, Toby and River) during the public forum on 12/06:
  - *“Think this is a good idea as have safer option.*
  - *Otherwise have to go to roundabout or signals, which adds five minutes on to the commute. Most students just run across and try not to get hit when cars are speeding down this road. Much easier for school and also for the community to access the park and the bike track”.*

## Oaklands School Safety Improvements



## Consultation summary

---

**Dunbars Crossing (35  
submitters provided  
feedback)**

- Support – 28
- Somewhat support – 1
- Did not support - 3
- Did not state - 3

# Over to you



# Mingimingi Hautoa Knights Stream School, Safety Improvements

Gemma Dioni

10 July 2025

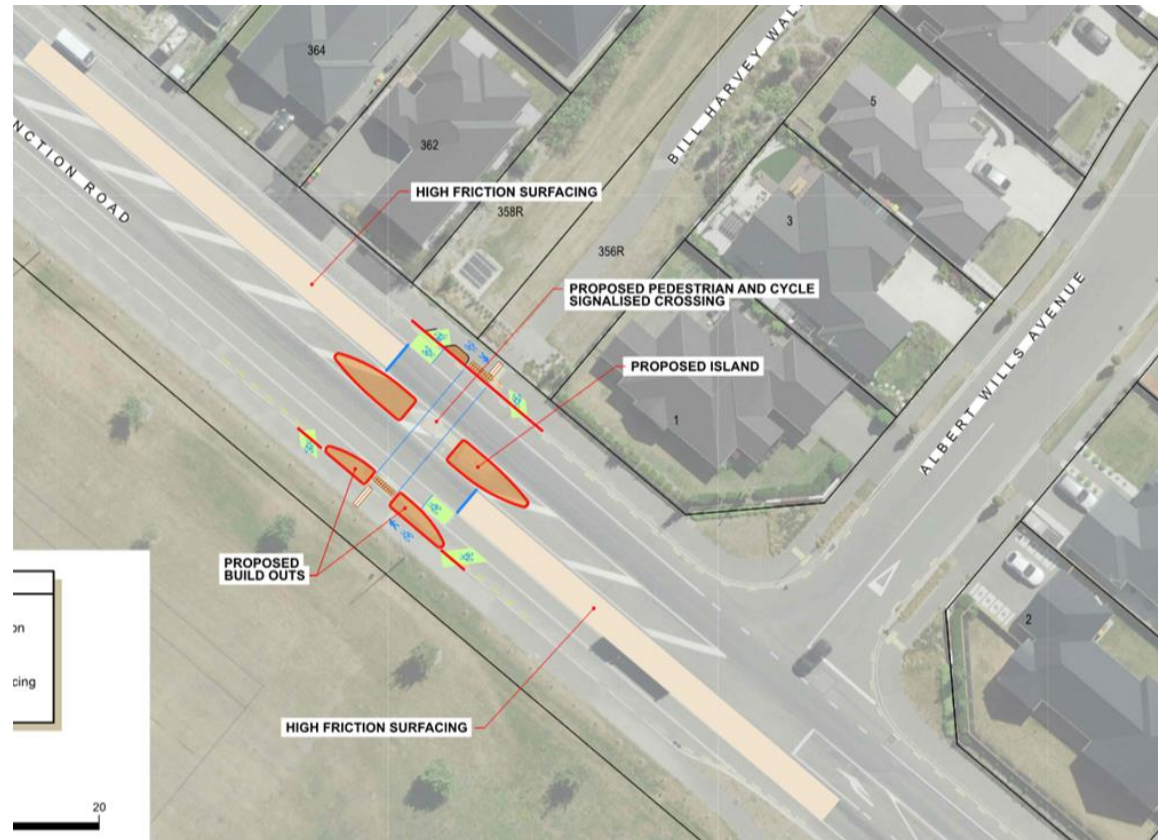
## Oaklands Safety Improvements

---

- Knights Stream School safety improvements seeks to address:
  - Ongoing safety concern around children crossing Halswell Junction Road.
  - A parent whose child was hit presented at Council.
  - Request from Kainga Ora who have built new homes adjacent to Halswell Junction Road.
- Students (Tiegan, Alexis, Grace) during the public forum on 12/06:
  - *“It will make it safer to cross the road, for school children and for people wanting to go to the park. Cars go fast through here.”*



## Knights Stream School Safety Improvements



## Consultation summary

---

**Halswell Junction Road  
Crossing (23 submitters  
provided feedback)**

- Support – 17
- Somewhat support – 3
- Did not support - 2
- Did not state - 1



# Over to you