

## Christchurch City Council MINUTES ATTACHMENTS

---

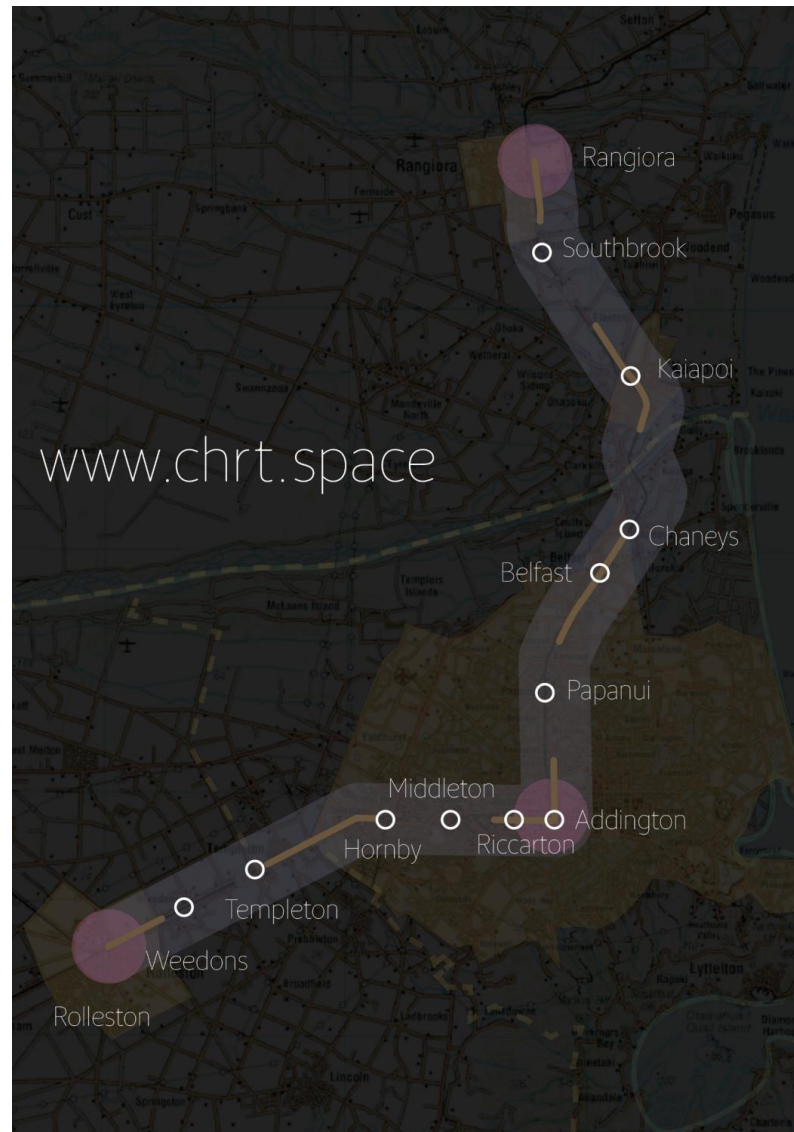
**Date:** Wednesday 2 July 2025  
**Time:** 9.30 am  
**Venue:** Boardroom, Fendalton Service Centre, Corner Jeffreys  
and Clyde Roads, Fendalton

---

TABLE OF CONTENTS NGĀ IHIRANGI	PAGE
<b>Apologies</b>	
A. Joe Davies - Presentation to Council .....	3
<b>10. Monthly Report from the Community Boards - May and June 2025</b>	
A. Waihoru Spreydon-Cashmere-Heathcote Community Board - Presentation to Council .....	17
B. Waimāero Fendalton-Waimairi-Harewood Community Board - Presentation to Council .....	25
C. Waipapa Papanui-Innes-Central Community Board - Presentation to Council.....	32
D. Waipuna Halswell-Hornby-Riccarton Community Board - Presentation to Council.....	41
E. Waitai Coastal-Burwood-Linwood Community Board - Presentation to Council .....	48
F. Te Pātaka o Rākaihautū Banks Peninsula Community Board - Presentation to Council .....	55

---

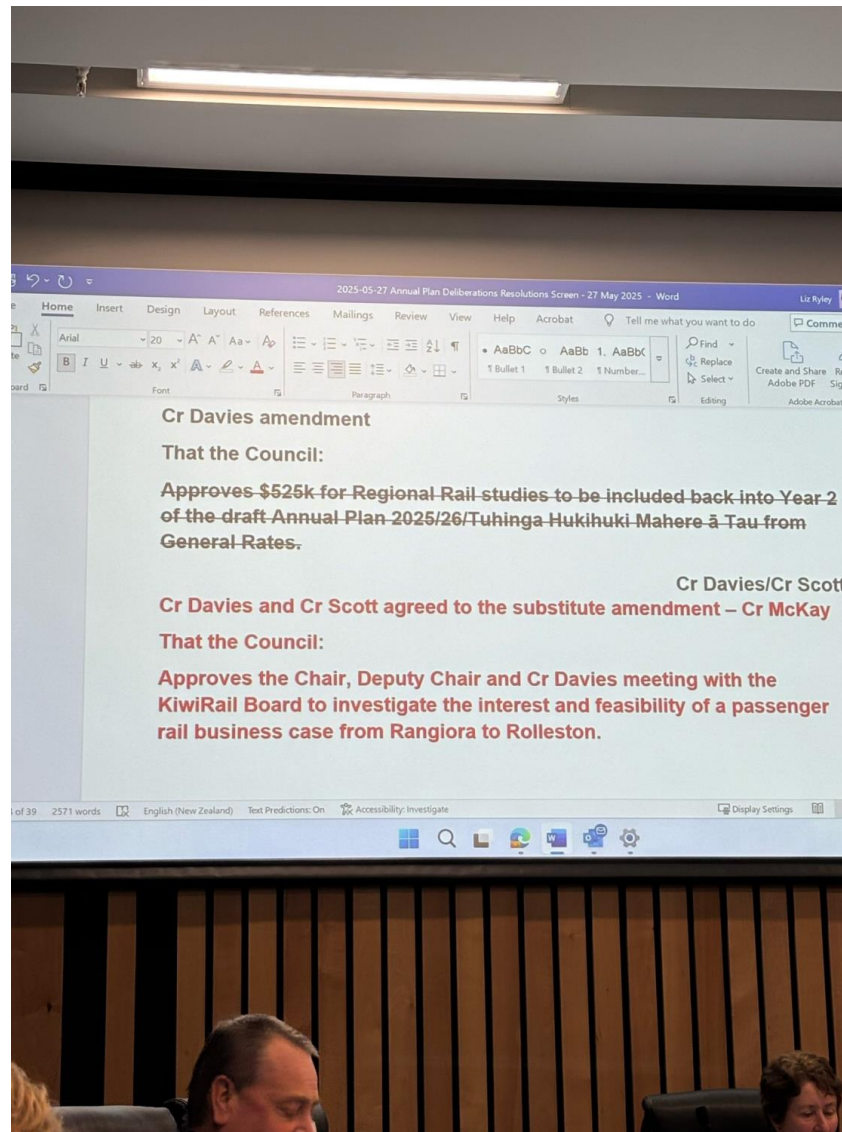




CRC does not have a position on  
exempt passenger transport services  
before the time that exemption has been  
granted

CRC supports MRT and the spatial plan

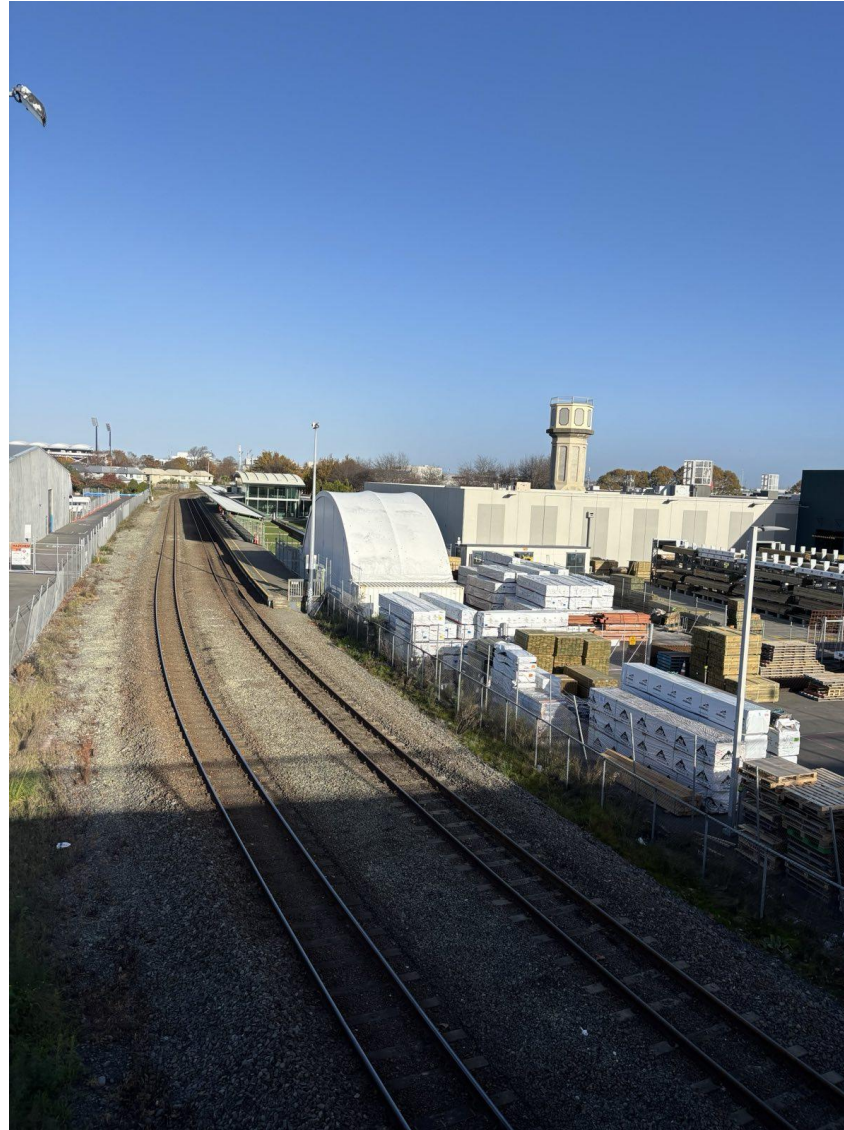
Today we are talking about the following  
amendment





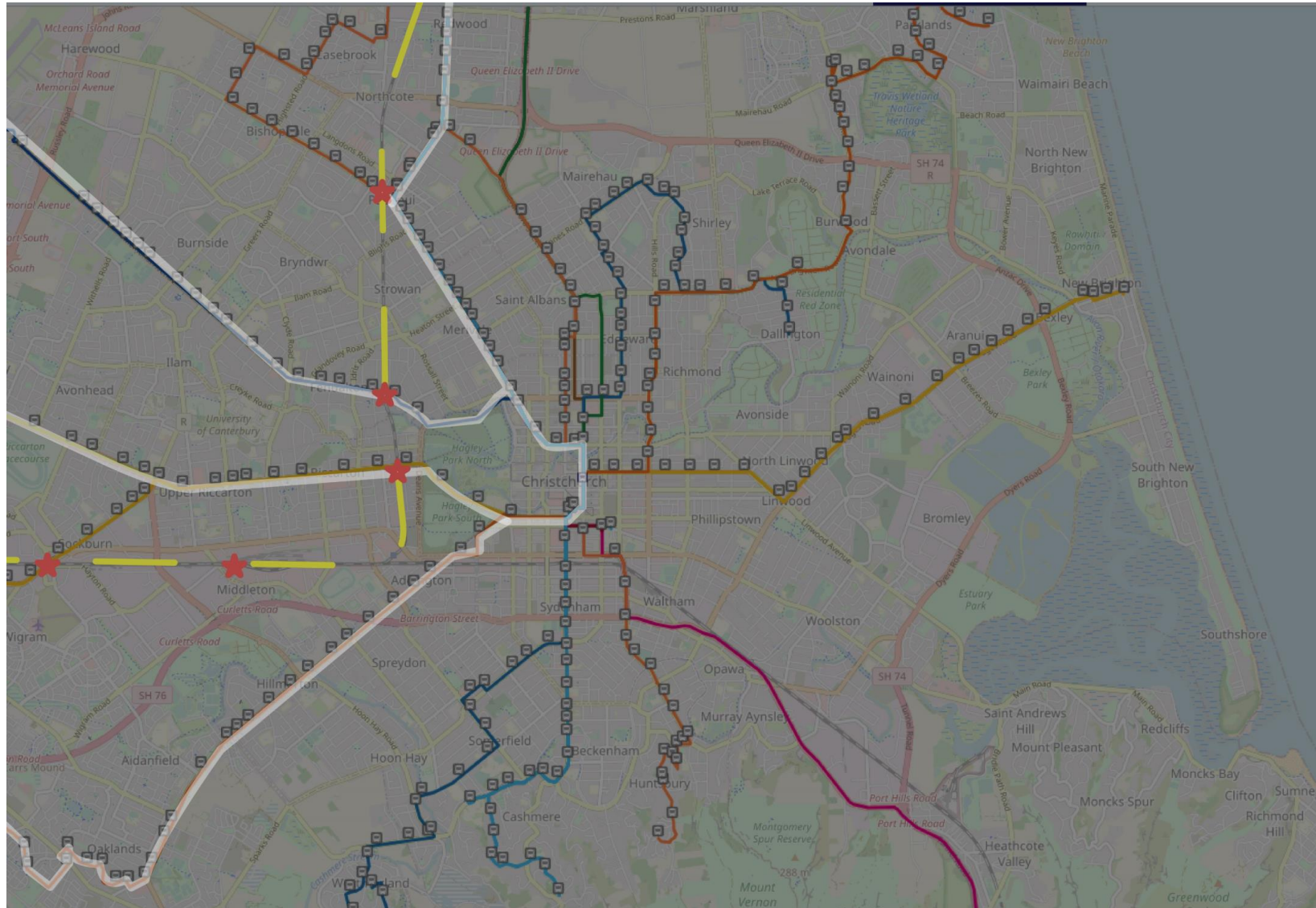
















Attachment 8.4.1



The processes, advantages,  
disadvantages, and legal considerations  
involved in establishing CCOs for service  
delivery or commercial investments

Environment Canterbury

28 April 2025

Council Meeting 2025-05-28

49 of 210



# Waihoru Spreydon-Cashmere-Heathcote Community Board Report to Council

Te kaipāhō (Presenters):  
Callum Ward, Chairperson  
Keir Leslie, Deputy Chairperson



## Community Events

### Cashmere Residents' Emergency Support Team - Neighbourhood Support Community Information Evening



## Community Events

### Neighbourhood Building in Addington



## Advocacy

### Selwyn Street / Milton Street Safety Concerns



## Community Consultation

### Tuawera Cave Rock mast lights



## Community Events

### Community Pride Garden Awards Edible and Sustainable Garden Awards



## Advocacy

### Grange Street renewal of watermain



**Our Board's ambition is  
liveable communities!**

# Waimāero Fendalton-Waimairi-Harewood Community Board

Report to Council – 2 July 2025



**Presenters:** Jason Middlemiss (Chair), Bridget Williams (Deputy Chair)

## Community Preparedness Hui

On 15 May 2025, the Community Governance Team ran a session on Community Organisations and Responding to Emergencies.

Eighteen people came from twelve different organisations.

The aim of the session was to get organisations thinking about how they could respond if an emergency happened in their organisation and/or community. They were asked to look at what policies, procedures, physical supplies and organisational resources they currently have in place.



## Jeffreys Reserve Bike Jump

As a result of a public forum from local young people, we are trialling some 'unstructured play' at Jeffreys Reserve next to the Fendalton Library.



## Community Service Awards

The Waimāero Fendalton-Waimairi-Harewood Community Service awards were held on Tuesday 17th June at the Commodore Hotel.

The Community Board had the pleasure of presenting 13 awards to local residents for their outstanding volunteer service.





## Shirish Paranjape

On Monday, 30 June 2025, Shirish resigned from his role as a member of our Community Board.

Shirish was given the opportunity for a job transfer to Sydney which means he and his wife will be able to reconnect with his children and his 8-month old grandchild.

Our Board would like to take this opportunity to thank Shirish and acknowledge his contribution to the Board and Council over the past 9 years as a Board member.



Thank you!

# Waipapa Papanui-Innes-Central Community Board

## Report to Council for July 2025



**Presenters:** Emma Norrish and Simon Britten  
2 July 2025

## Public Forum – 15 May Board Meeting

- Ruby-Grace Miller - pedestrian safety on Fitzgerald Avenue
- Jennifer Dalziel - promoting the Dudley Design Guide
- Holy Trinity Church - the Church's activities and vision for the homeless in their area

### Holy Trinity Avonside

Community  
Op-Shop



## 12 June Board Meeting

- Justin Fields – Christchurch North College
- Rhys Lewis – YDF report back on competing at World VEX Robotics Championships in Dallas, USA
- David Laird - urban timber recovery
- Nigel Larsen - Predator Free St Albans – trap distribution activities



# Deputations

**Ian Lochhead** - Sutton House -  
Lease to The Sutton Heritage House  
and Garden Charitable Trust



**We Are Richmond** - Tree Planting  
Plan for Petrie Park

**Kris Mackie** - Tree Planting Plan for  
Petrie Park

## Community Board Plan

### Revitalisation of Petrie Park

- Tree Planting Plan approved
- We Are Richmond's concept plan approved subject to funding and consenting requirements being met

#### Petrie Park, North Richmond

WE ARE  
RICHMOND

#### Concept master-plan

Revamp the southern half of Petrie Park, once a bowling green, with a redesigned concept that incorporates the Urban Forest Tree Plan. Include amenities for dog walkers. The formal fence of the bowling green will once again be activated. Along the fence, there will be murals and plants explained and seating. A shelter has been strategically located away from the historical sheds, known to have soil contaminated with reported arsenic concentrations. Soil samples were gathered from the former bowling green, identifying areas at the southwestern corner of the park, revealing the presence of asbestos in the near-surface soil. An asbestos management plan will be devised for this section.

Sample 50 and Sample 25 results indicate that isolated areas of health-significant arsenic (above recreational and residential soil contaminant standards) are present in the soil. Despite this, it is considered acceptable for recreational use, mainly due to the isolated nature of results exceeding residential guidelines. However, structures that attract people to this location for recreational purposes, such as picnic tables or other features, should not be installed unless soil management measures are implemented, such as capping.

Health significant level of arsenic (chrysothol) present at locations 50 and 55. Health significant levels of arsenic (chrysothol) were also identified in soil sample 55. Note a 0.05 m cap over contaminant area.



Concept plan Petrie park  
Urban forest with dog park features. Scale 1:3000

0 10 20 30 40 Meters



Concept drawing (2024) Single pitched roof that can catch rain water for fruit trees.

# Community Liaison

## ANZAC Day 2025

A great turnout from the local community marked the last ever ANZAC Service at the Papanui RSA, with the Board Chair laying a wreath on behalf of the Board.

Next year the service will be at a different location in Papanui.



**Strengthening Communities Together**  
Enabling active and connected communities to own their futures

# Community Liaison

## Events

- Te Ora Hou Night Market *(top)*
- Eid al-Fitr Festival 2025 *(bottom)*



**Strengthening Communities Together**  
Enabling active and connected communities to own their futures

# Community Liaison

## Engagement / Philipstown Hub Fall Market

Entertainment, food and market stalls plus activities made the day a great experience for everyone.

Local staff and the Council Engagement Team were in attendance gaining feedback on the Cross Street Reserve play space renewal.



**Strengthening Communities Together**  
Enabling active and connected communities to own their futures

Christchurch  
City Council

# Community Liaison

Youth Week – Northlands Mall



Celebrate...

# YOUTH week

Northlands Mall

2:45-4:45pm

May 19-23

- Live Bands - Local DJ's
- Dance Crews - Bouncy Stuff
- Kapa haka performances
- Singer songwriters
- Jazz combo - Prizes, etc.

Located near the playground

TE ORA HOU ŌTAUTAHU

LOOP PYDT



**Strengthening Communities Together**  
Enabling active and connected communities to own their futures

# Environment

## Local Parks Update

- **Rutland Reserve** (top left)  
*Mulching native plantings.*
- **Shirley Birdsong Trail** (top right)  
*Planting and mulching*
- **Papanui Bush** (lower left)  
*Eight specimen trees planted – kahikatea and rimu – on the Langdons Road frontage.*
- **Packe Reserve Community Garden** (lower right)  
*New benches, new plants and tree maintenance.*



**Strengthening Communities Together**  
Enabling active and connected communities to own their futures

Thank you!

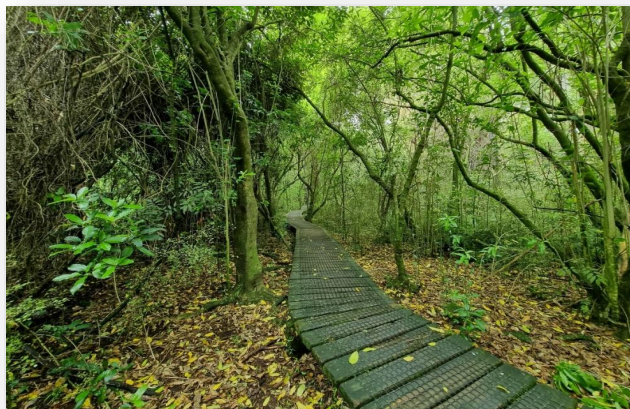
# Waipuna Halswell-Hornby-Riccarton Community Board Report to Council – 2 July 2025

**Te kaupāhō Presenter(s):** Marie Pollisco, Chairperson



1

## Better-Off Fund



Pūtaringamotu Riccarton Bush is closed until September while Boardwalk replacement work is undertaken.

All the existing concrete paths and boardwalk will be replaced with wider, safer tracks that will be more accessible.



Work is underway on the new Upper Riccarton War Memorial Park on the site of the former Upper Riccarton War Memorial Library on Riccarton Road.

2

## Wycola Park Consultation – Hornby Schools Engagement



Productive engagement sessions took place at Hornby High School and Hornby Primary School, which supported the wider consultation on the Wycola Skate Park.

3

## Sharing Kai together



The popular Share Kai initiative was hosted by Oak Development Trust, and Off the Ground Fund recipient, Vy Tran organised a Vietnamese Beef Noodle Pho Bo Workshop.

## Community Pride Garden Awards 2025



An awards function to acknowledge Community Pride Garden Award recipients was held at Te Hāpua Halswell Centre.

It was a well-attended event, celebrating recipients' hard work and dedication to gardening.

## Celebrating one year of Matatiki Hornby Centre



Matatiki Hornby Centre celebrated its first anniversary showcasing an impressive year of community engagement and growth. A pool party event was run by YCD with a strong focus on creating a fun, safe space for young people.

Thank you!

# Waitai Coastal-Burwood-Linwood Community Board

## Report to Council – July 2025



Tekaipāhō (Presenters): Paul McMahon, Chair and Jackie Simons, Deputy Chair

# Highlights from the Board Area

## Planting Working Bees at Dallington Landing



Volunteers kicked off the new planting season at Dallington Landing



# Highlights from the Board Area

## Alpine Fault 8 Roadshow



The AF8 Roadshow stopped at South Brighton in May for a public talk from scientists at the University of Canterbury surrounding the likely impacts of a large alpine fault earthquake.



# Highlights from the Board Area

## Community Pride and Edible & Sustainable Garden Awards

The Waitai Coastal-Burwood-Linwood hosted a joint award ceremony on behalf of the Christchurch Beautifying Association and the Canterbury Horticultural Society



# Advocacy



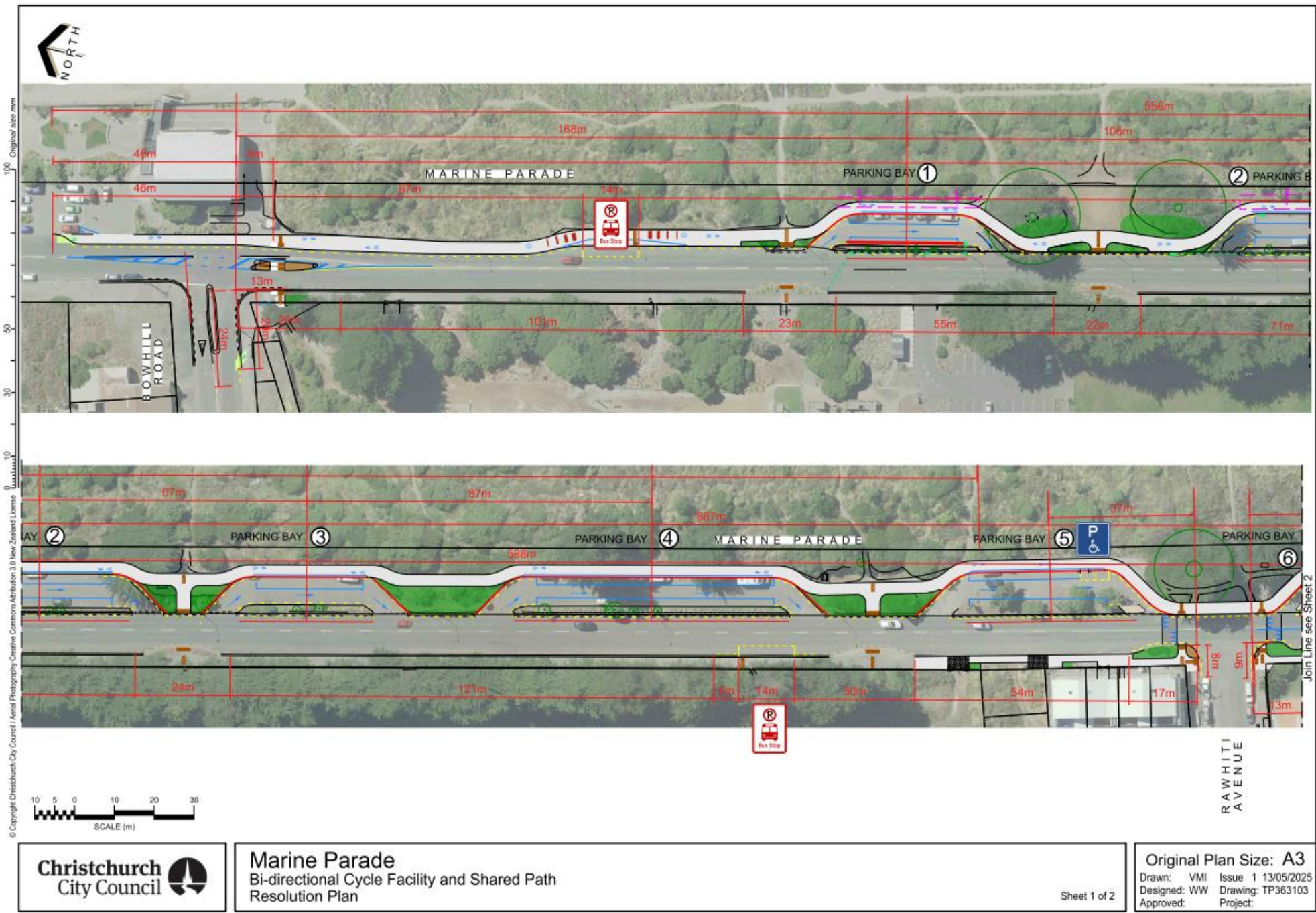
**Portlink**



**New Consultation  
Process for Road  
Renewals**

# COMMUNITY BOARD PART A REPORT

## New Brighton CRAF Marine Parade (Hawke to Bowhill) Street Renewal



**Thank you!**

## Te Pātaka o Rākaihautū Banks Peninsula Community Board Report to Council – May/June 2025



**Presenters:** Lyn Leslie, Chairperson & Penelope Goldstone, Community Governance Manager Banks Peninsula

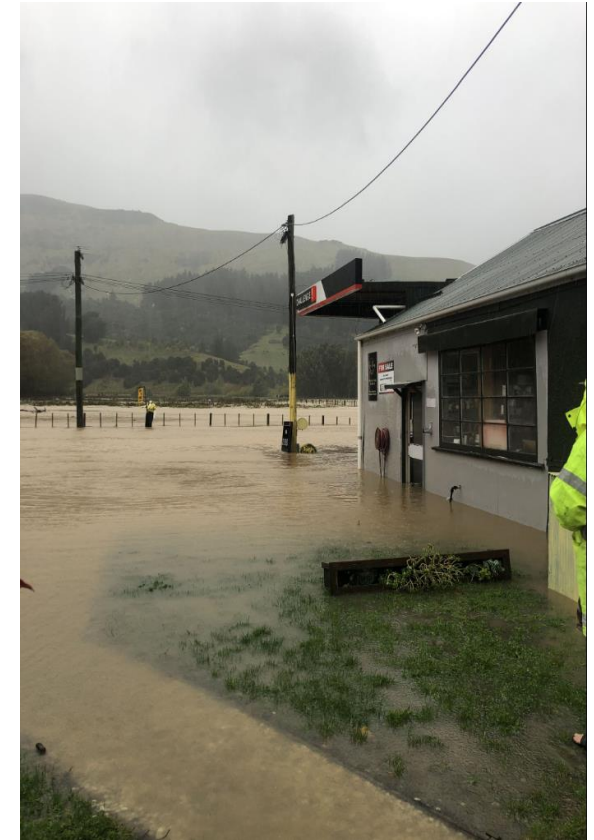
## May 2025 Wairewa Flooding

Property  
Christchurch Akaroa Road



1 July 2025

## Flooded Businesses Little River



## Little River Flooding Round Table Group

### PURPOSE:

To explore options for mitigating flooding in the Little River township and to share information.

### WHY:

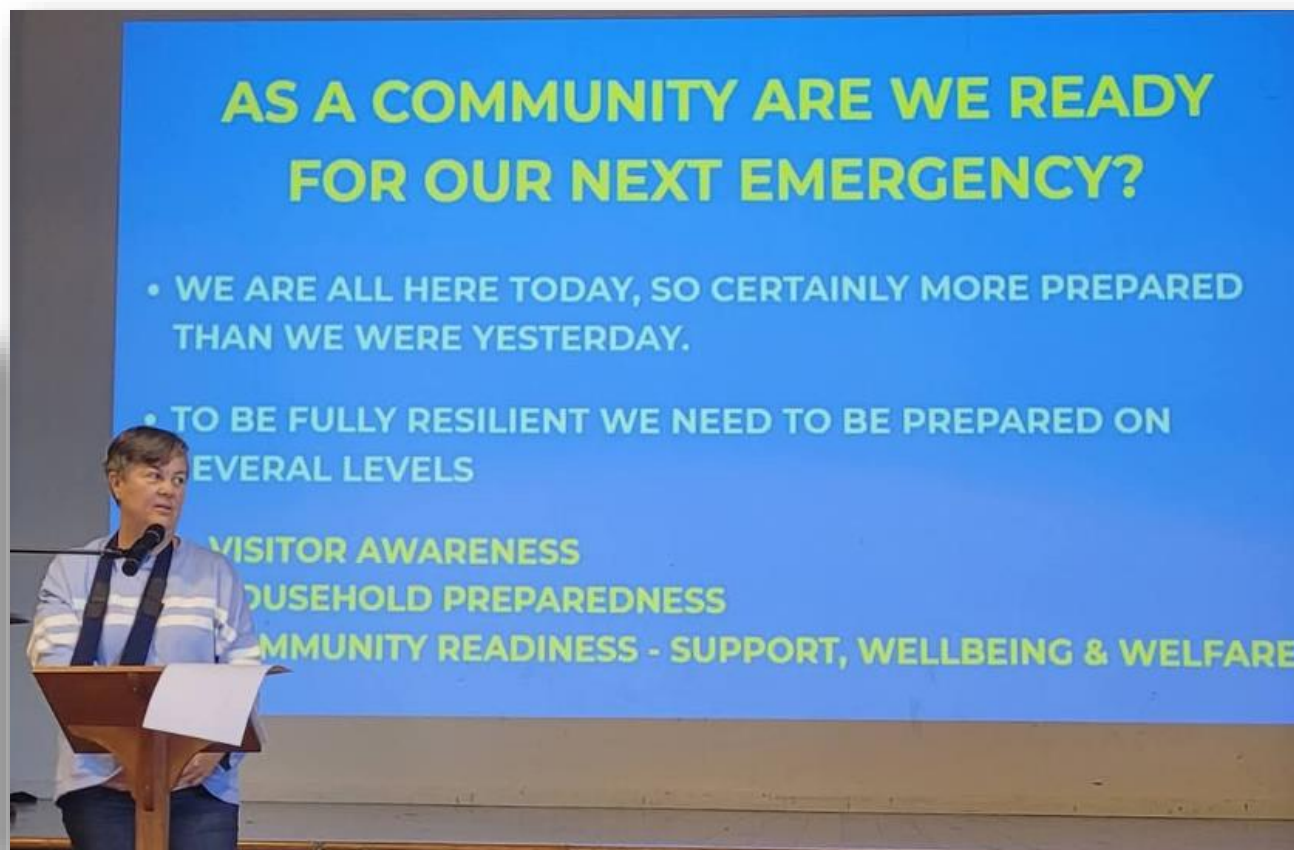
- Multiple stakeholders and interested parties – a complex picture.
- Flooding impacts extend regionally through disruptions to State Highway 75—a key route for tourism, freight, and emergency services
- Targeted investment now can help reduce long-term costs, protect critical infrastructure, and strengthen regional connectivity



**Wairewa Mahinga Kai  
Catchment Group**

## Akaroa and the Bays Resilience Planning

Successful launch  
Saturday 24 May



1 July 2025

Te Rangi Pō o Matariki

Thank you!  
Ngā mihi nui!