

**Te Pātaka o Rākaihautū Banks Peninsula Community  
Board Information Session/Workshop  
MINUTES ATTACHMENTS**

---

**Date:** Monday 9 June 2025  
**Time:** 12.04 pm  
**Venue:** Lyttelton Community Boardroom,  
25 Canterbury Street, Lyttelton

---

<b>TABLE OF CONTENTS NGĀ IHIRANGI</b>	<b>PAGE</b>
<b>3. Te Nukutai o Tapoa Naval Point - Project Update</b>	
A. Item 3 - Te Nukutai o Tapoa Naval Point Project Update Te Pātaka o Rākaihautū Banks Peninsula Community Board 9 June 2025 .....	3

---





# Project Update Te Nukutai o Tapoa – Naval Point

Banks Peninsula Community Board  
9 June 2025

## Agenda

### ▪ Update on Tapoa Projects

- Change Pavilion and Recreation Grounds
- Magazine Bay Marina upgrade
- Western Redevelopment

### ▪ Whakaraupō Recreation Incorporated

# Current Construction Dates:

- Recreation Ground and Sport Courts: December 2024
- Change Pavilion Construction: September 2024 – May 2025
- Recreation Grounds Civil and Landscape: Construction Programme:  
20th January – June 2025

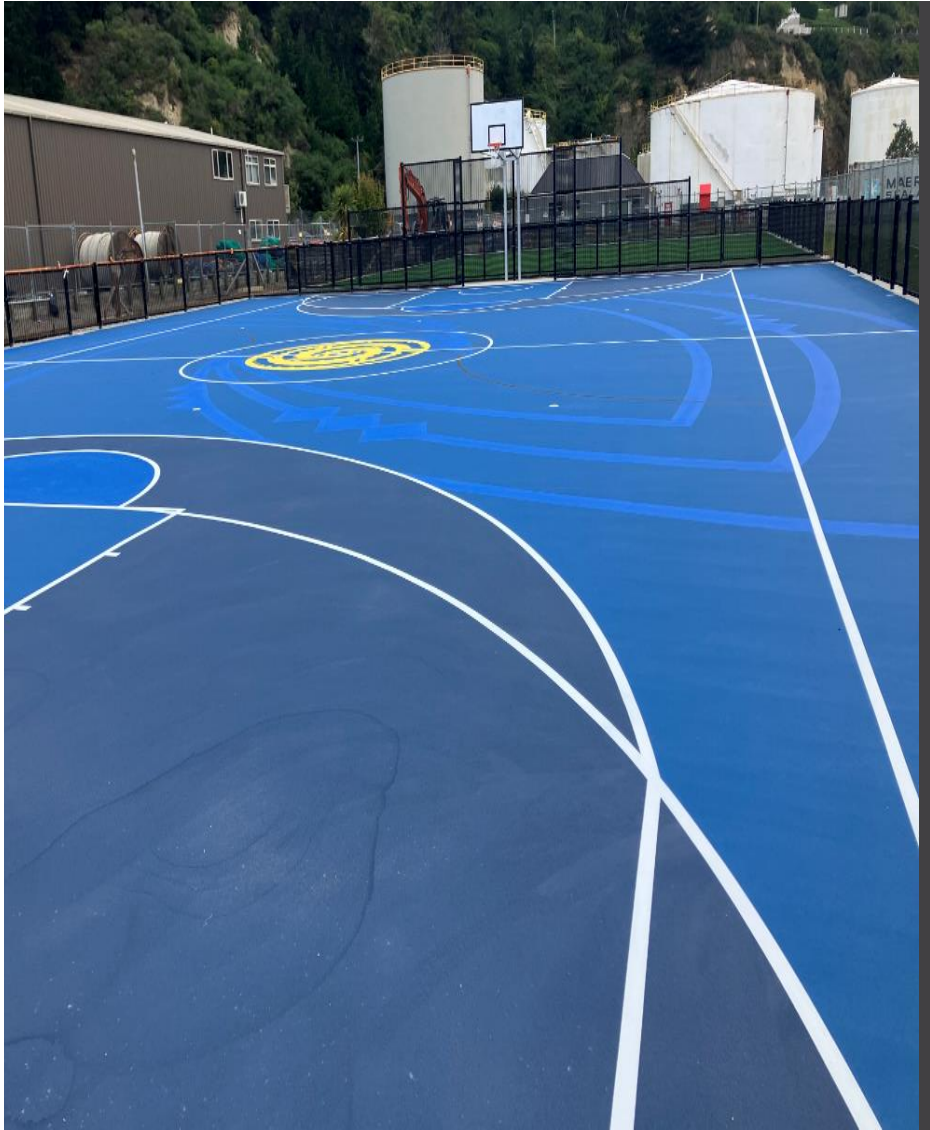






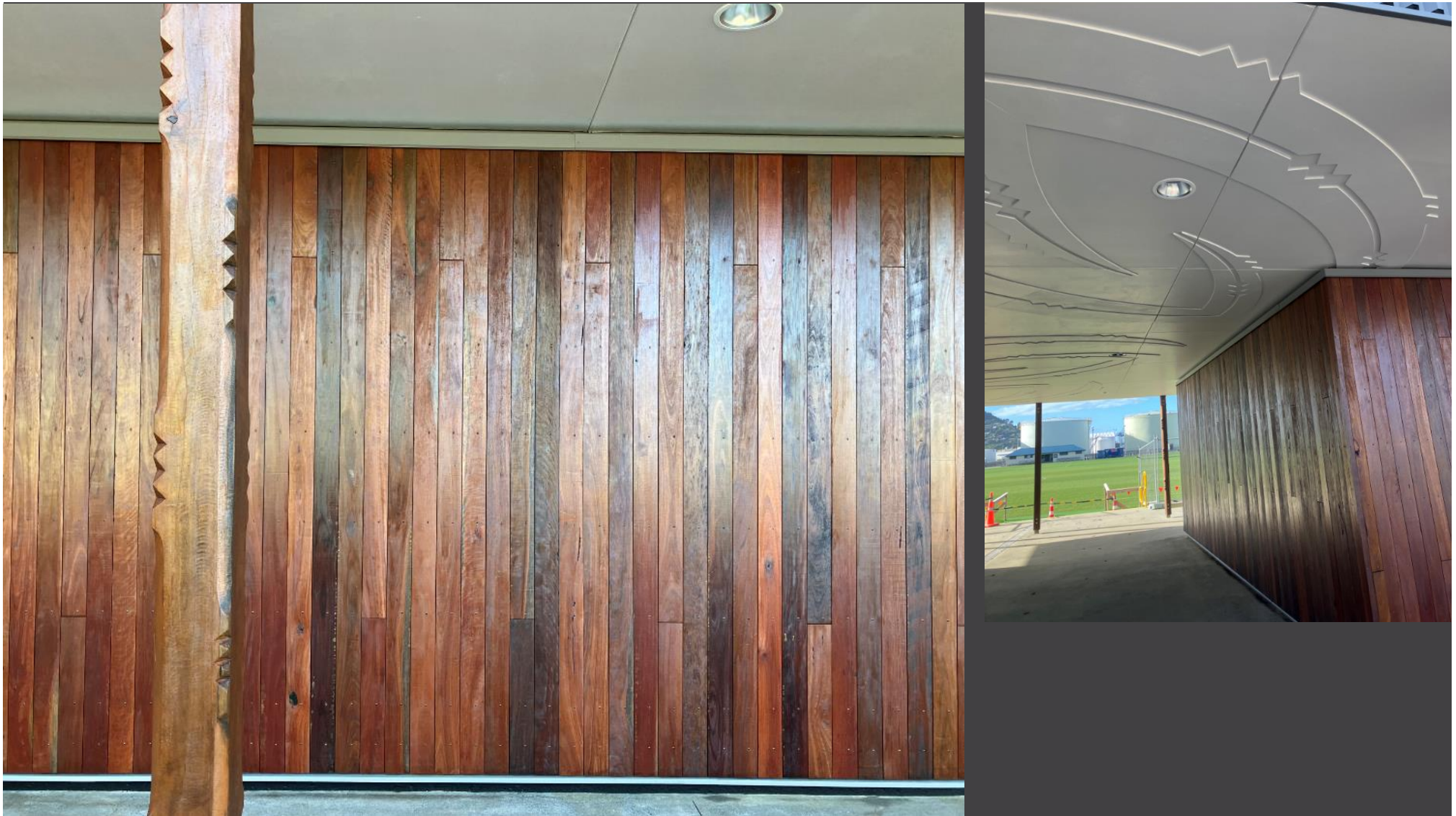




































# Key Programme Dates

- Land sale and transfer with LPC – underway
- Magazine Bay Jetty Upgrade – works scheduled to commence in late 2025
- **Park Terrace Reserve**
  - *Consultation with Ngāti Wheke*
  - *Project scoping and archaeological / heritage significance*
- **Western Redevelopment Works**
  - *Confirmation of Multiuse Building and Wharewaka approach – WRI / Naval Point Club*
  - *Concept Design (including staging and concept design for marine infrastructure in partnership with Ngāti Wheke): December 2024 – July 2025*
  - *Resource Consenting Technical Reporting and Detailed Design Work: July 2025 – September 2025*
  - *Resource Consent Process including Hearing: Estimated mid-2026*



Stage 3 – Civil & Landscape Works – Construction to start January 2025







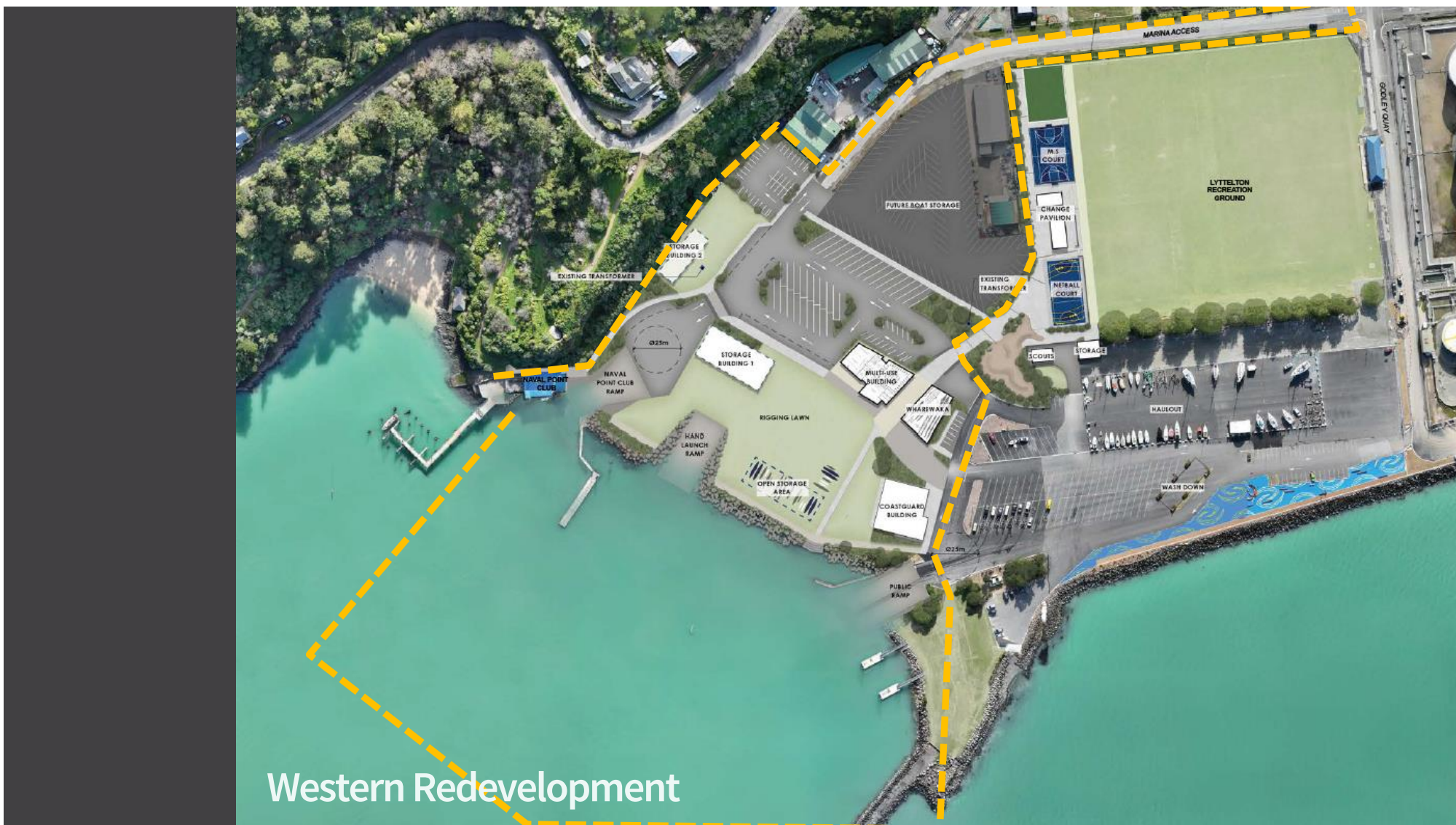


18



















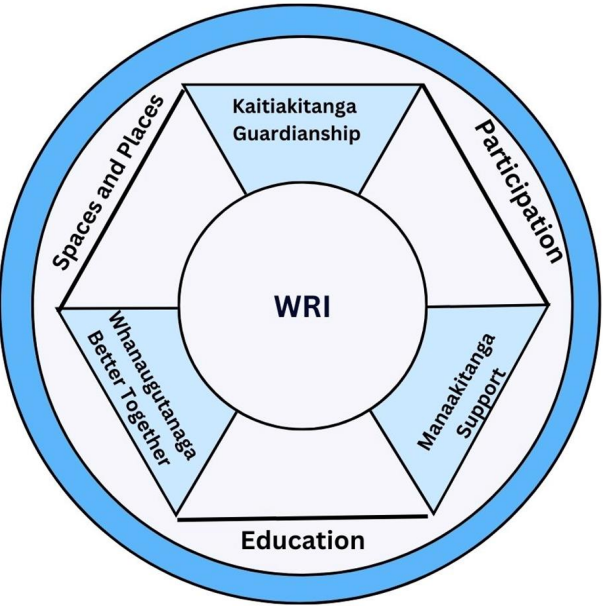
# WRI – Who we are

## The Board:

Ben Keys  
Miriam Denney (secretary)  
Jamie Macgregor (chair)  
Ben Acland  
Kevin Scoville  
Craig Pauling (Ngati Wheke)  
Caine Tauwhare (Ngati Wheke)  
Tim Bloy (NPCL)

Incorporated Sept 2022

Mandated to make member clubs stronger



	Member Groups
	Naval Point Club Lyttelton (799)* (overlap with 112 paddle members)
	Te Ana Marina Association (60)
	Ocean Ski Canterbury (10)
	Jet Junkies
	Te Awahaku Outrigger Canoe Club Inc (23)
	Z2O Salt Water Polo (148)
	Lyttelton Rugby Club Inc (240)
	Canterbury Zephyr Owners (40)
	Little Ships Club (80)
	Waitaha Paddling Club (42)
	Te Waka Pounamu Outrigger Canoe Club (200)
	Purau Moorings Association (106)
	Si Finn Association Inc (21)
	South Brighton Surf Life Saving Club (250)
	Canterbury Yachting Association
	Lyttelton and Whakaraupō Netball (and South Island Māori Netball Association (200)
	Waimari Surf Life Saving Club (140)
	Christchurch Windsports Association
	Sailability
	Team Sailing Trust (pending)
	Dare/ Blue light Trust
	Canterbury Open Water Swimming
	Kai Ngaru
	TOTAL (Draft Member Number) 2359 through 21 clubs



## Summary of Key Objectives

1. Coordinate and facilitate shared events and activities at Te Nukutai o Tapoa / Naval Point within **12 months**
2. Inform the design and the development of the shared rigging lawn and hand launch ramp within **2 years**
3. Design, build and operate a shared & multi use storage facility within **3 years**
4. To design, build and co-manage a shared Hub Building within **5 years**
5. Manage shared services on behalf of member clubs **ASAP**

# Capital Projects



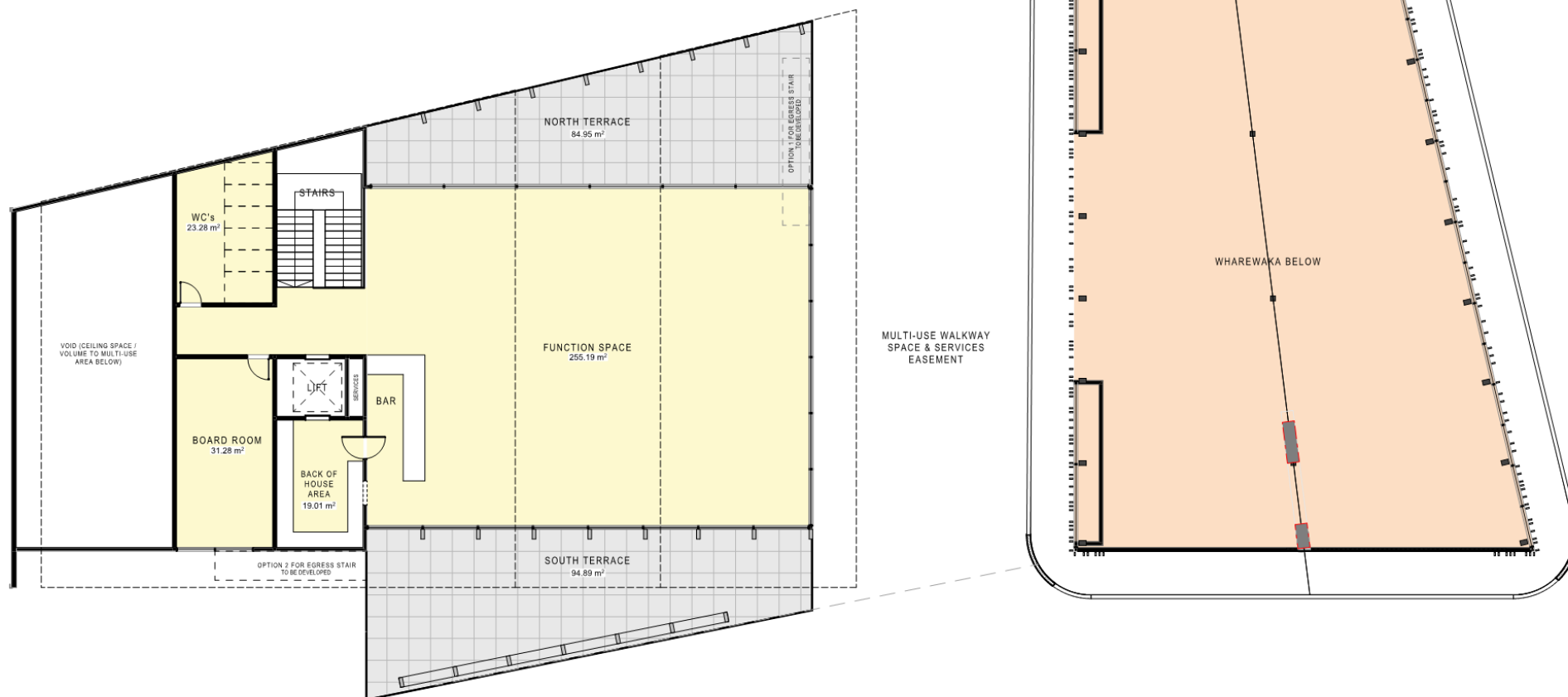
# KEY STRUCTURES







## 2) Multi – Use Hub



## 1) Storage

