
Te Pātaka o Rākaihautū Banks Peninsula Community Board Information Session/Workshop AGENDA

Notice of Information Session/Workshop Te Pānui o te Hui:

Te Pātaka o Rākaihautū Banks Peninsula Community Board Information Session/Workshop will be held on:

Date: Monday 26 May 2025
Time: 10.00 am
Venue: Akaroa Boardroom, 78 Rue Lavaud Akaroa

Membership Ngā Mema

Chairperson	Lyn Leslie
Deputy Chairperson	Nigel Harrison
Members	Tyrone Fields
	Jillian Frater
	Asif Hussain
	Cathy Lum-Webb
	Howard Needham
	Luana Swindells

20 May 2025

Principal Advisor

Penelope Goldstone
Manager Community Governance
Tel: 941 5689
penelope.goldstone@ccc.govt.nz

Meeting Advisor

Liz Beaven
Community Board Advisor
Tel: 941 6601
liz.beaven@ccc.govt.nz

Website: www.ccc.govt.nz

Note: This forum has no decision-making powers and is purely for information sharing.

To watch the meeting live, or previous meeting recordings, go to:

<https://www.youtube.com/@bankspeninsulacommunityboa3600/streams>

To view copies of Agendas and Notes, go to:

<https://www.ccc.govt.nz/the-council/meetings-agendas-and-minutes/>



TABLE OF CONTENTS NGĀ IHIRANGI

Karakia Tīmatanga	3
1. Apologies Ngā Whakapāha	3
2 Open Forum Te Wā Kōrerorero	3

INFORMATION SESSION AND WORKSHOP ITEMS

3. 2025 Banks Peninsula Wikipedian at Large Project	5
The time allocated for this Information Session is 20 minutes.	
4. Smart Christchurch Update	7
The time allocated for this Information Session is 20 minutes.	
5. Siting a stormwater treatment filter on greenspace	9
The time allocated for this Information Session is 20 minutes.	
6. Tsunami Readiness.....	15
The time allocated for this Information Session is 45 minutes.	

Karakia Whakamutunga

Karakia Tīmatanga

Whakataka te hau ki te uru	<i>English translation</i>
Whakataka te hau ki te tonga	Cease the winds from the west
Kia mākinakina ki uta	Cease the winds from the south
Kia mātaratara ki tai	Let the breeze blow over the land
E hī ake ana te atakura	Let the breeze blow over the ocean
He tio, he huka, he hau hū	Let the red-tipped dawn come with a sharpened air.
Tihei mauri ora!	A touch of frost, a promise of a glorious day.

1. Apologies Ngā Whakapāha

An apology for absence was recieved from Jillian Frater.

2. Open Forum Te Wā Kōrerorero

There were no open forum requests at the time the agenda was prepared.

To present to the Community Board, refer to the [Participating in decision-making](#) webpage or contact the meeting advisor listed on the front of this agenda.

3. 2025 Banks Peninsula Wikipedian at Large Project

Reference Te Tohutoro: 25/547625

Presenter(s) Te Kaipāhō: Dr Mike Dickison, Consulting Wikipedian

1. Detail Te Whakamahuki

Timing	This information session is expected to last for 20 minutes.
Purpose / Origin of the Information Session	Introducing Wikipedian at Large 2025 project focussed on Te Pātaka o Rākaihautū Banks Peninsula.
Background	<p>Wikimedia Aotearoa NZ is a non-profit charitable trust funded by the Wikimedia Foundation in the United States of America, which is in turn funded by donations to Wikipedia. They have an annual Wikipedian at Large grant to fund an experienced Wikipedia editor to train volunteer editors, run public events, and work with organisations to improve Wikipedia content. The 2025 grant is focused on Te Pātaka o Rākaihautū Banks Peninsula.</p> <p>Mike Dickison has been Wikipedian at Large twice before and has previously done projects with Development West Coast and Ashburton District Council. He is based in Christchurch and working on different Banks Peninsula projects January–December 2025.</p>
Key Issues	<ul style="list-style-type: none"> Improved Wikipedia coverage has a significant effect on tourist spending; a study in Spain measured an 8% increase in tourist nights for cities with improved Wikipedia articles. Many places on the Peninsula have very poor or absent Wikipedia coverage and few open-licensed photos. Photos owned by Councils or tourism groups are usually copyrighted All Rights Reserved and can't be used. Conflict of interest rules prevent organisations from promoting themselves in Wikipedia. Edits must be done by independent volunteers. There is a good volunteer-editor community in Christchurch city, but nothing on the Peninsula itself.
Next Steps	<ul style="list-style-type: none"> Work with historical societies to cover Banks Peninsula history, especially making out-of-copyright photos available. Run public talks and “edit-a-thons” in Lyttelton Ōhinehou, Akaroa, and Little River Wairewa. Coordinate with conservation groups and Council to improve coverage of scenic reserves and tourist destinations, with publications and publicity photos.

	<ul style="list-style-type: none">• Run online and in-person training for keen volunteers.
Useful Links	<ul style="list-style-type: none">• https://www.thepress.co.nz/nz-news/360536761/wikipedians-shine-light-banks-peninsula• https://www.odt.co.nz/star-news/star-christchurch/putting-banks-peninsula-wiki-map• https://en.wikipedia.org/wiki/Wikipedia:GLAM/AoWPAL_2025

Attachments Ngā Tāpirihanga

There are no attachments to this coversheet.

Signatories Ngā Kaiwaitohu

Author	Liz Beaven - Community Board Advisor
Approved By	Penelope Goldstone - Manager Community Governance, Banks Peninsula

4. Smart Christchurch Update

Reference Te Tohutoro: 25/962686

Presenter(s) Te Kaipāhō: Michael Healy, Innovation and Improvement Manager and Aimee Martin, Senior Research Analyst.

1. Detail Te Whakamahuki

Timing	This information session is expected to last for 20 minutes.
Purpose / Origin of the Information Session	<p>To provide an update on a Smart Christchurch Initiative (project) which has upcoming installations in the areas of Lyttleton and Akaroa.</p> <p>The project is titled micro-mobility monitoring, and will provide key cycle, scooter, and pedestrian (micro-mobility) data to various Christchurch City Council's teams as well as made available to the Community Board.</p> <p>The purpose of this session will be to:</p> <ul style="list-style-type: none"> • Introduce the project. • Share data accessibility instructions. • A chance to feedback. <p>Since 2020, Christchurch City Council has utilised sensors to monitor pedestrian activity and active transport within the Central Business District (CBD) set-up by the Smart Christchurch team in the Innovation & Improvement Unit. An expansion for this network has been approved, allowing new units to be installed where there are existing gaps in monitoring areas, both within the CBD and sub-urban areas.</p>
Background	<p>Complete, high-quality data micro-mobility data is essential to secure capital and operational funding, support the shift toward net-zero, and drive informed decision-making in urban development.</p> <p>Two units are planned for both Lyttleton and Akaroa (four in total). These have been decided in a working group between Smart Christchurch, Research + Monitoring, Urban Design, Urban Regeneration, Transport, and Events, joining an expansion of a total 21 new sites to an existing network of 21.</p> <p>The Christchurch City Council has partnered with CountCulture to supply the technology and monitoring systems. The installed kits consist of a pole-mounted sensor powered by a solar attachment. These sensors are designed to be versatile, allowing for relocation to expand the number of monitoring sites. The kits can be installed on existing street poles or custom-constructed posts without permanently altering the poles.</p> <p>Micro-mobility monitoring within the areas of Akaroa and Lyttleton will provide Community Board members with accurate counts on pedestrian traffic in key areas for use in both decision-making and future requests for funding or assets.</p>
Key Issues	<ul style="list-style-type: none"> • N/A
Next Steps	<ul style="list-style-type: none"> • Accept any feedback on site locations within Lyttleton and Akaroa.

	<ul style="list-style-type: none">Progress proposed installation dates.
Useful Links	<ul style="list-style-type: none">Pedestrian counters : Christchurch City Council.

Attachments Ngā Tāpirihanga

There are no attachments to this coversheet.

Signatories Ngā Kaiwaitohu

Authors	Sam Bacon - Project Coordinator Michael Healy - Manager Innovation & Improvement
Approved By	Michael Healy - Manager Innovation & Improvement

5. Siting a stormwater treatment filter on greenspace

Reference Te Tohutoro: 25/790180


Presenter(s) Te Kaipāhō: Paul Dickson, Drainage Engineer

1. Detail Te Whakamahuki

Timing	This information session is expected to last for 20 minutes.
Purpose / Origin of the Information Session	Three Waters staff seek the Board's views on siting stormwater treatment filters on greenspace in Akaroa.
Background	<p>In July the Council will present to Environment Canterbury Te Pātaka o Rākaihautū Banks Peninsula Stormwater Management Plan (BP SMP). The plan will propose some mitigations for the effects of urban contaminants in stormwater. Stormwater filters will be included in the proposal.</p> <p>The Council has yet to decide whether stormwater treatment should (a) target the most contaminated stormwater or (b) treat all or most stormwater discharging into priority streams. Responses to public consultation will help us to decide.</p> <p>Busy roads and commercial/industrial areas will be targeted as they generally discharge more contaminants. Filters of a given size have more effect when treating more contaminated stormwater. Under the “treat worst stormwater” scenario there would be treatment devices in Lyttelton, Governors Bay and Akaroa. Akaroa town centre is an example of a more contaminated area.</p> <p>There is a choice between two filter types:</p> <ol style="list-style-type: none"> A Filterra™ biofilter: installed on the surface, is cheaper and provides better treatment. A biofilter has an organic filter medium. A Stormfilter™ : an underground chamber containing filter cartridges. It can be sited in more places including under a road, if other services permit. It is less effective removing zinc and copper. <p>To treat some parts of Akaroa town centre in a Filterra™ the device would need to be installed on greenspace. Parks Unit has been consulted and advised that the Community Board is best placed to judge the merits of a utility land use on green spaces.</p>
Key Issues	<ul style="list-style-type: none"> The BP SMP must propose some stormwater treatment in the larger settlements including Akaroa. The most contaminated stormwater in Akaroa is expected to come from the town centre. The choice to treat town centre stormwater depends partly on whether a practicable site can be found for a treatment device. Filterra™ devices are preferred because of cost and effectiveness but can only be installed on unbuilt land (i.e. unoccupied greenspace).

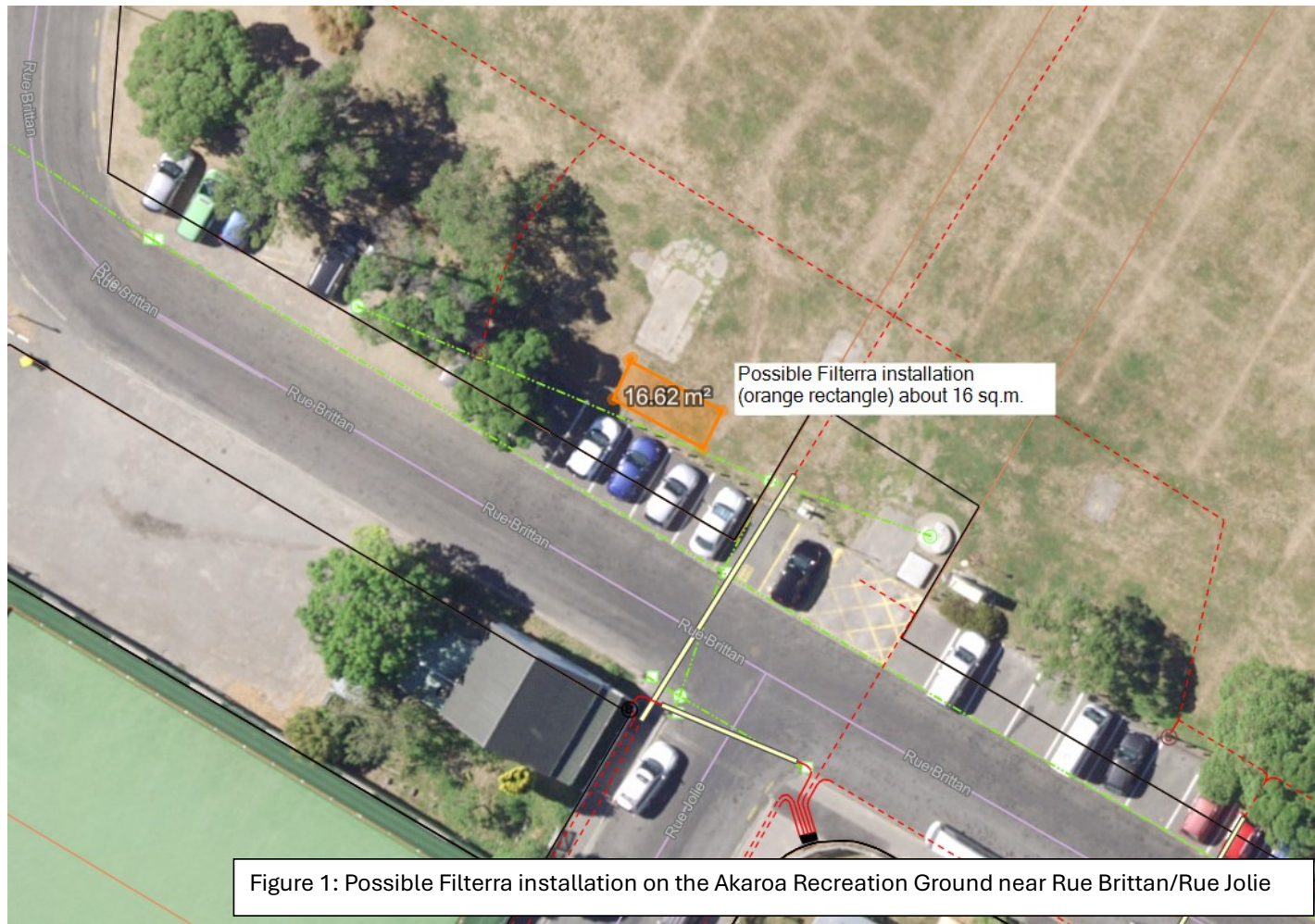
	<ul style="list-style-type: none"> Four potential sites are shown in the attachments. Devices will not necessarily be installed on the sites indicated.
Next Steps	<p>The next steps for the SMP are:</p> <ul style="list-style-type: none"> Receive a statement of the Board's views about installations on certain green spaces in Akaroa. Obtain public preferences on mitigation options through public consultation. Discuss mitigation options with the four rūnanga and obtain their preferences. Choose one of the three mitigation options in the draft SMP and complete the SMP for Board approval in July 2025.
Useful Links	<ul style="list-style-type: none"> https://www.newline.ccc.govt.nz/news/story/have-your-say-on-the-future-of-waterways-in-banks-peninsula https://hdp-au-prod-app-ccc-letstalk-files.s3.ap-southeast-2.amazonaws.com/3117/4477/8487/WEB_-_INF7867_Banks_Peninsula_SMP_-_Summary.pdf

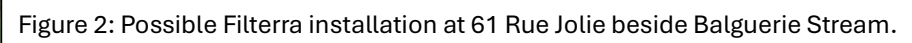
Attachments Ngā Tāpirihanga

No.	Title	Reference	Page
A 	Possible locations for Filterra biofilters on Akaroa greenspace	25/790244	11

Signatories Ngā Kaiwaitohu

Author	Paul Dickson - Drainage Engineer
Approved By	Kevin McDonnell - Team Leader Asset Planning Gavin Hutchison - Head of Three Waters









6. Tsunami Readiness

Reference Te Tohutoro: 25/530685

Presenter(s) Te Kaipāhō: Brendan Winder, Manager Civil Defence & Emergency Management

1. Detail Te Whakamahuki

Timing	This information session is expected to last for 45 minutes.
Purpose / Origin of the Information Session	<ul style="list-style-type: none"> To update Community Board members and see their feedback on tsunami risks, planning initiatives, building community resilience at a local level and the optimal tsunami alerting system for Christchurch and the Banks Peninsula. Council staff will be joined by Canterbury Group CDEM.
Background / Key Issues	<ul style="list-style-type: none"> Christchurch and Banks Peninsula are potentially at risk from distant, medium and locally sourced tsunamis. National, regional and local agencies collaborate and continually update a suite of planning initiatives, “a planning eco-system” to mitigate the risk posed by tsunamis. All planning initiatives are supported by ongoing locally focused community resilience activities. Council’s tsunami alerting capability has been reviewed in light of an updated risk profile and national-regional best practice. Options for updating Council’s tsunami alerting system have been developed, with a preferred option emerging.
Next Steps	<ul style="list-style-type: none"> Present similar information, in an open forum, to the (coastal) Waihoru a Community Board in May 2025. Incorporate Board feedback into the tsunami alerting review project going forward. Present an options report on the tsunami alerting system to the Council, This is anticipated to be in June 2025.
Useful Links	

Attachments Ngā Tāpirihanga

There are no attachments to this coversheet.

Signatories Ngā Kaiwaitohu

Authors	John Filsell - Head of Community Support and Partnerships Nikki Hamilton - Senior Projects Coordinator Brenden Winder - Manager Civil Defence & Emergency Management
Approved By	John Filsell - Head of Community Support and Partnerships

Karakia Whakamutunga

Closing Prayer

Unuhia, unuhia Unuhia ki te uru tapu nui Kia wātea, kia māmā, te ngākau, Te tinana te wairua i te ara takatā Koia rā e Rongo, whakairia ake ki runga Kia tina! TINA! Hui e! TĀIKI E!	Draw on, draw on, Draw on the supreme sacredness To clear, to free the heart, the body and the spirit of mankind Rongo, suspended high above us (i.e. in 'heaven') Draw together! Affirm!
-----------------------------------------------------------------------------------------------------------------------------------------------------------------------------------------------------	----------------------------------------------------------------------------------------------------------------------------------------------------------------------------------------------------------