
Finance and Performance Committee
MINUTES ATTACHMENTS

Date: Wednesday 28 May 2025
Time: 9.30 am
Venue: Boardroom, Fendalton Service Centre,
Corner Jeffreys and Clyde Roads, Fendalton

TABLE OF CONTENTS NGĀ IHIRANGI	PAGE
5.1. Christchurch Civic Trust	
A. Christchurch Civic Trust - Presentation to Finance & Performance Committee notes	3
10. ChristchurchNZ Holdings Ltd - Quarter 3 2024/25 Performance Report	
A. ChristchurchNZ Holdings Ltd - Presentation to Finance and Performance Committee	5

CCC FINANCE AND PERFORMANCE COMMITTEE MEETING 28 MAY 2025

Christchurch Civic Trust Deputation

Presenter: Anne Dingwall
Christchurch Civic Trust Board Member
(Member of the Trust's Heritage, Urban Design and Resource Management Subcommittee)

AGENDA ITEM 13. CANTERBURY PROVINCIAL COUNCIL BUILDINGS - proposed expressions of interest process

Introduction

Before you today is a staff report seeking your approval to commence an Expression of Interest process to restore the earthquake-damaged Canterbury Provincial Council Buildings (CPCB).

Christchurch Civic Trust Support

The staff report cites (at clause 8.9) the Christchurch Civic Trust as having shown *recent interest in the future of the buildings*. Indeed, the Trust remains supportive of restoration. To this end, Dr Ian Lochhead, noted Christchurch architectural historian and former Associate Professor of Art History at the University of Canterbury, last year presented his detailed and illustrated research of the heritage and architecture of the Provincial Council Buildings to the Civic Trust Board and members. Photographs revealed much of the scale of the 2011 earthquake damage and the complexity of any restoration project.

Expressions of Interest Process

This staff-generated report has come out of the blue. We now learn of earlier public-excluded Council decisions favouring an unsolicited bid for repair of the Provincial Council Buildings. No doubt aware of the risk of legal challenge, the report proposes that the Council now commence an Expressions of Interest (EOI) process.

Given the national heritage significance of the Provincial Council Buildings and the scale, complexity and mandatory conditions of any restoration, not to mention sources of funding, the Civic Trust contends that this staff EOI proposal is not the current answer. The report is silent as to the Option of Public Consultation and also as to any advice having been provided by the Council's Legal Team. The Trust is alarmed by the prospect of the Council's proceeding to a formal commercial process, shaping future confidential commercial decisions.

Decisions Significance

Central to the heritage of Christchurch and located in the central city is Hagley Park (whose historic heritage has been found a matter of national importance), a legacy of the newly constituted Canterbury Provincial Council, which, in 1855, reserved Hagley Park for ever as a public park for public recreation and enjoyment.

Similarly, the purpose-built Canterbury Provincial Council Buildings, located also in the central city, are a legacy of that same Provincial Council, and central to the heritage of Christchurch and indeed Canterbury. In 2012, notwithstanding the earthquake damage, the Canterbury Provincial Government Buildings [sic] were recognised internationally for their architectural and historical significance and listed on the World Monuments Fund's World Monuments Watch. Already, that Fund has financially supported the restoration and exhibition of important retrieved artefacts *to promote the future rebuilding...helping to ensure that the buildings' heritage lives on for generations to come.*

www.wmf.org/projects/canterbury-provincial-government-buildings

Therefore, the Civic Trust is concerned that notwithstanding the staff report's acknowledgement (at clause 4.) of the importance of the Provincial Council Buildings' nationally significant heritage, citing also the 1928 Canterbury Provincial Buildings Vesting Act, in the absence of prior full public consultation and any Option for Public Consultation, the staff have assessed the *required decisions* by this Committee as of *medium significance* (at clause 8.5.2).

Conclusion

The Christchurch Civic Trust endorses fully the position of Historic Places Canterbury and their arguments in support of their request for:

- the Finance and Performance Committee to resolve to appoint an advisory Canterbury Provincial Council Buildings Reference Group of Heritage Experts, and for the Council to seek its advice/input in Council decision-making in respect of the Canterbury Provincial Council Buildings, including but not limited to future use(s), commercial processes and restoration. (This group could function within the constraints of a Council-determined commercial process.)
- the Finance and Performance Committee to resolve to undertake **full public consultation, with heritage professionals and academics included**, on future use options and the process for restoration of the Canterbury Provincial Council Buildings.

Given the national heritage significance of the Canterbury Provincial Council Buildings, the Civic Trust contends that it is imperative that these resolutions be made **before** the Council initiates any commercial discussions or negotiations.

The old adage *Time spent in reconnaissance is seldom wasted* is applicable to the situation now facing us all regarding the restoration of the Canterbury Provincial Council Buildings, as it emphasises the importance of comprehensive investigation and assessment of a situation, necessary for informed decision-making before taking action, thereby preventing or limiting wasted effort, time, and resources - all critical where restoration of a nationally significant complex of heritage buildings with public funding is proposed.

ChristchurchNZ

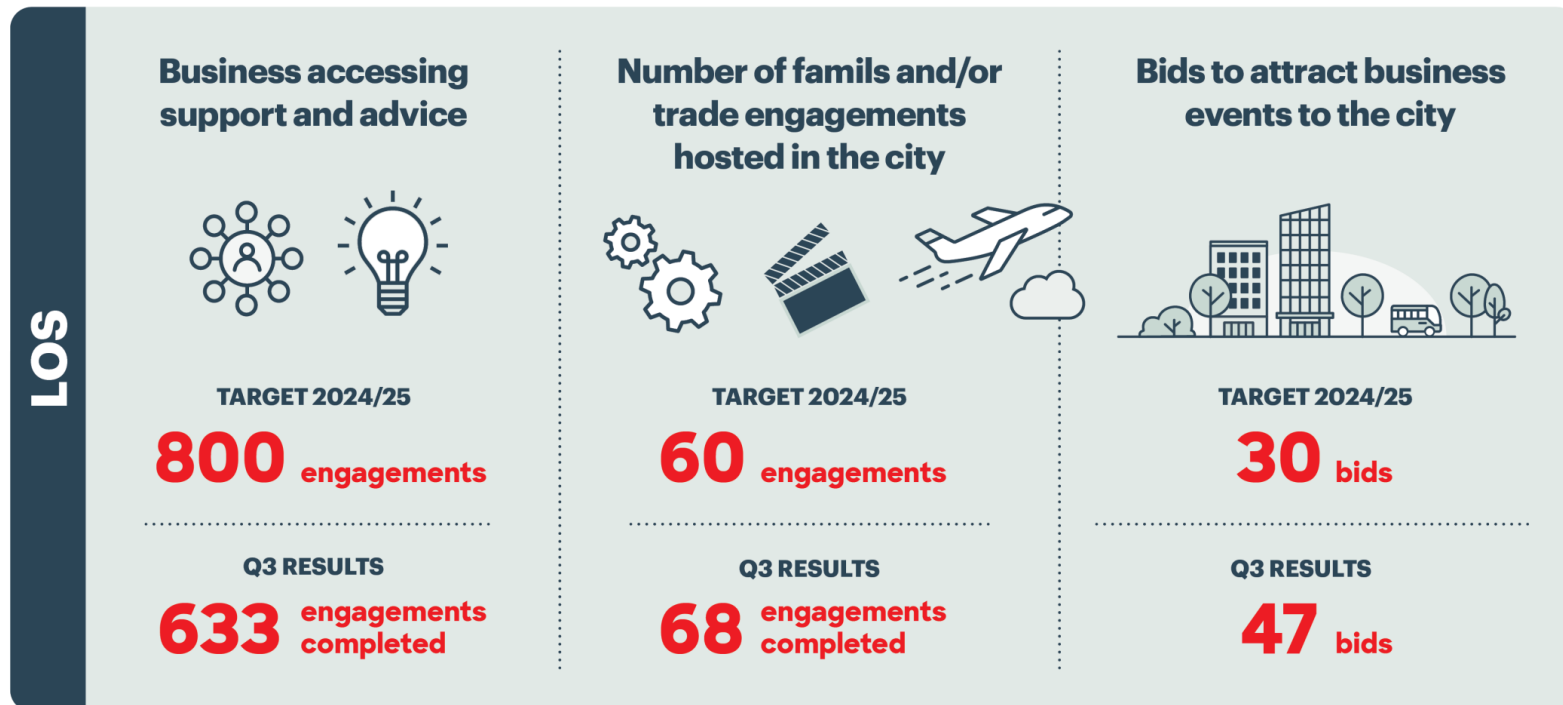
Powered by: **Christchurch**
City Council 

Q3 Report to 31 March 2025

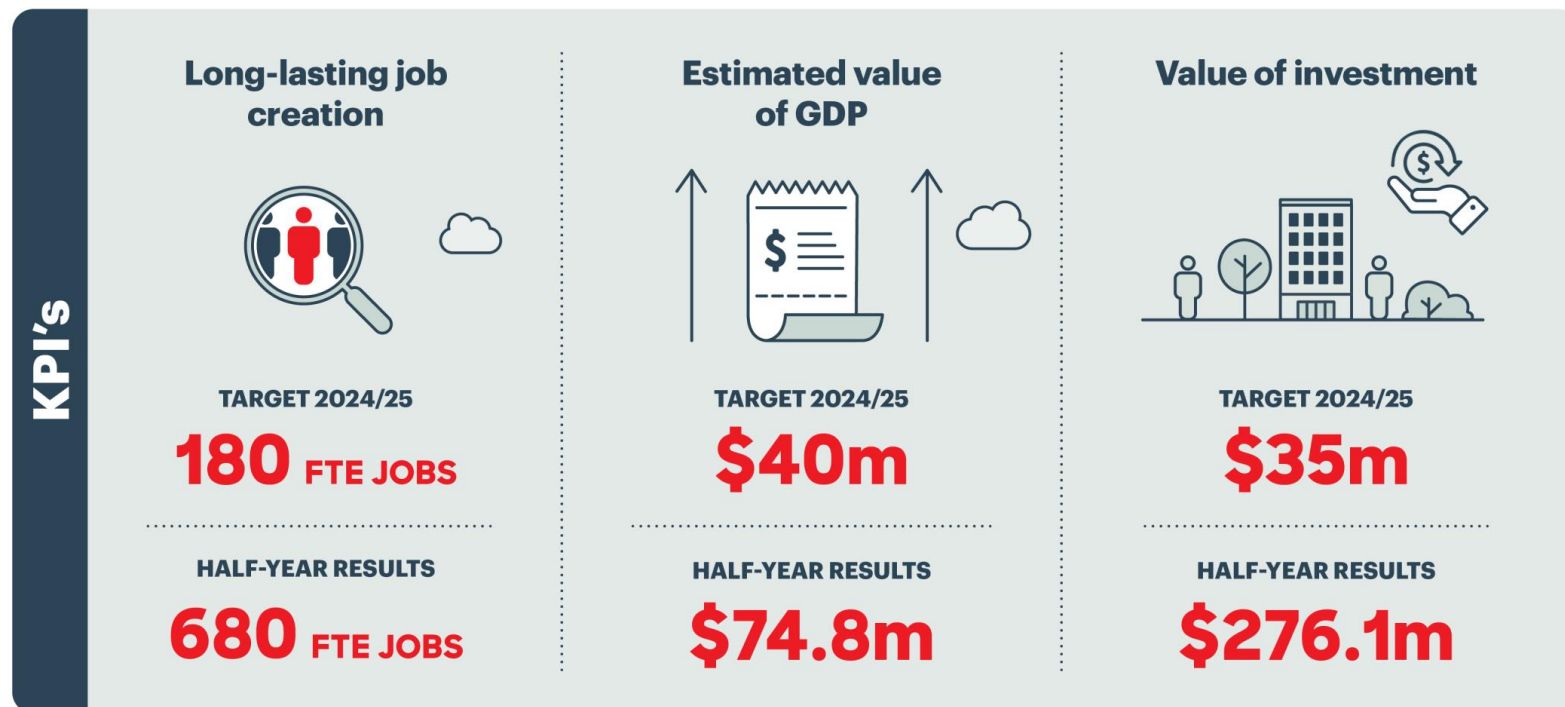
Lauren Quaintance, Chair
Ali Adams, CEO



Performance Measures – LoS YTD results



Performance Measures – KPI half year results



Quarter 3 delivery

Innovation and Business Growth



- Extension to Regional Business Partners contract
- MOU with Christchurch Educated
- Third party funding for a larger screen grant
- Hosted Japanese Space Agency, Antarctic Season opening and 75 investors and entrepreneurs from the Far Out 4x4 tour
- Refreshed Antarctic Gateway Plan
- Facilitated 3 new commercial attraction opportunities (Aerospace sector)
- Facilitated new science commercialisation tool – partnering with Canterbury Health Innovation

Urban Development



- More that 100 people signed up to rent or buy homes in Te Pakau Maru (New Brighton)
- Supported progress of Seaview residential development
- Implemented activations in Oram Ave to help revitalise commercial spaces
- Finalised sale and purchase for Sydenham Yard housing

Quarter 3 delivery

Destination and Attraction



- Revitalised Buskers Festival
- Pinot Noir 2025 event generating \$1m + in visitor spend
- Annual Christchurch Showcase in Australia – 25 Operators presenting
- Crankworx Summer Series – over 220 riders
- Sponsorship for Electric Ave
- Submitted a bid for the World Open Masters
- Negotiating major event for Stadium opening
- Won \$600k in contestable funding from Central Government for winter tourism campaign in Australia

Marketing, Brand and Communications



- City brand installed at international arrivals area at the Airport
- Christchurch brand awareness campaign – 480k views (13% higher than target)
- Black Clash city brand exposure reached 914k Kiwis
- City logo on pitch during Wallabies vs Kiwis (1.2m Australian viewers)

PRODUCTIVITY



WHAT WE DELIVERED Q3 HIGHLIGHTS

FAR-OUT VC NETWORKING EVENT

- 75 investors and entrepreneurs
- 35 participants from Silicon Valley
- 50 Christchurch tech founders and company leaders



LIVEABILITY



WHAT WE DELIVERED Q3 HIGHLIGHTS

MILTON ST DEVELOPMENT

- 80 new homes and 120 workers close to the city centre
- Upgraded water and electricity infrastructure
- Government research facility



ATTRACTIVENESS

WHAT WE DELIVERED Q3 HIGHLIGHTS

SUMMER OF MAJOR EVENTS

- Electric Avenue
 - World Buskers Festival
 - Crankworx Summer Series
 - T20 Black Clash
 - PSA NZ Squash Open
 - White Ferns & BLACKCAPS
-
- 96,000 attendees at 7 Major Events
 - 78,000 visitor nights
 - \$13.25 million in visitor spending



Financial and Operational Performance: to 31 March

OPERATING EXPENDITURE | \$13.2m – 3.7% less than budgeted

INCOME | \$486k more than budget

16% of income from third party funding (target is > 10%)

LIVING WAGE | 100% compliant

CARBON EMISSIONS | On track to meet KPI

CYBER SECURITY | External testing completed



What's coming up

BioOra Clinical trials



Winter Different Campaign and Coolest intern



Canterbury Aerospace strategy (launching July)



Economic Ambition Workshop with city leaders



DMP Implementation Banks Peninsula – Dark Sky destination



DMP Implementation Provenance Strategy



**THANK YOU
& QUESTIONS**
