
Waihoru Spreydon-Cashmere-Heathcote Community Board Information Session/Workshop AGENDA

Notice of Information Session/Workshop Te Pānui o te Hui:

A Waihoru Spreydon-Cashmere-Heathcote Community Board Information Session/Workshop will be held on:

Date: Thursday 17 April 2025
Time: 4 pm
Venue: Linwood Boardroom,
Gate B, 180 Smith Street,
Woolston

Membership Ngā Mema

Chairperson	Callum Ward
Deputy Chairperson	Keir Leslie
Members	Melanie Coker
	Will Hall
	Roy Kenneally
	Tim Lindley
	Lee Sampson
	Tim Scandrett
	Sara Templeton

Principal Advisor

Jess Garrett
Manager Community Governance
Tel: 941 6289
jessica.garrett@ccc.govt.nz

11 April 2025

Meeting Advisor

Jonathon Jones
Community Board Advisor
Tel: 941 5563
Jonathon.Jones@ccc.govt.nz

Website: www.ccc.govt.nz

Note: This forum has no decision-making powers and is purely for information sharing.

To watch the meeting live, or a recording after the meeting date, go to:

<https://www.youtube.com/@waihorospreydon-cashmere-h3561/streams>

To view copies of Agendas and Notes, go to:

<https://www.ccc.govt.nz/the-council/meetings-agendas-and-minutes/>



TABLE OF CONTENTS NGĀ IHIRANGI

Karakia Timatanga	3
Waiata	3
1. Apologies Ngā Whakapāha	3
2. Open Forum Te Wā Kōrerorero	3

INFORMATION SESSION AND WORKSHOP ITEMS

3. Purau Reserve Landscape Development Plan Workshop	5
The time allocated for this Information Session/Workshop is 30 minutes	
4. Community Funding Information Session.....	17
The time allocated for this Information Session/Workshop is 30 minutes	
5. Elected Members' Information Exchange Te Whakawhiti Whakaaro o Te Kāhui Amorangi.....	22
Karakia Whakakapi	22

Karakia Tīmatanga

Kia tau te mauri o runga	<i>May the essence of above settle here</i>
Kia tau te mauri o raro	<i>May the essence of below settle here</i>
Paiheretia te ture wairua	<i>Bind together that we can't see and bind that we can see</i>
Paiheretia te ture tangata	<i>And have them guide us at this time</i>
Hei pou arahi i a tātou i tēnei wā	<i>May the thought be true</i>
Kia tika te whakaaro	<i>May the words be true</i>
Kia tika te kupu	
Tīhei Mauri Ora!	

Waiata

Manu tiria manu tiria Manu werohia ki te poho o Te Raka Ka tau rērere Ka tau mai i te Ruhi E tau e koia a Koia koia ko Tarauriki Kī mai i Māui Ehara i te whitu me te waru e E tau e koia, koia	Te whakamārama This song tells the story of Māui changing into a kererū and following his father into the underworld whereupon he returns with the kūmara. The kūmara is seen not only as food for the body but also food for the mind, thus referring to the importance of mātauranga.
---	--

1. Apologies Ngā Whakapāha

Apologies will be recorded at the meeting.

2. Open Forum Te Wā Kōrerorero

2.1 The Gather Foundation

Wendy Hoddinott will speak on behalf of The Gather Foundation regarding play opportunities in Hoon Hay.



3. Purau Reserve Landscape Development Plan Workshop

Reference Te Tohutoro: 25/644666
Bridie Gibbings, Manager Operations – Community Parks Development
Presenter(s) Te Kaipāhō : Krystle Anderson, Senior Engagement Advisor
Toby Chapman, Manager Urban Forest
Ruby Mountford-McAuley, Community Partnership Ranger

1. Detail Te Whakamahuki

Timing	This workshop is expected to last for 30 minutes.
Purpose / Origin of the Workshop	<p>The purpose of this information session is to update the Waihoru Spreydon-Cashmere-Heathcote Community Board on the changes to the Purau Reserve Landscape Concept Plan (attachment A) following the Board’s meeting on 10 October 2024.</p> <p>Staff will provide information on how the existing exotic trees affect Purau Reserve and the surrounding area, as well as the potential impact of their removal as they begin to decline.</p>
Background	<ul style="list-style-type: none">• Since June 2020, the Friends of Purau Reserve (FRP) have been working to improve Purau Reserve through weeding, planting, and creating pathways. However, in September 2023, residents raised concerns about the removal of vegetation, including trees, without prior consultation. They feared it could destabilise the land and impact neighbouring properties.• Additional concerns included the loss of the reserve's character, the removal of a plum tree, and the impact on seasonal variation. In response, the Parks Unit consulted a geotechnical engineer, who found no immediate risk but recommended further planting to stabilise the bank and reduce future runoff.• A stop-work notice was issued, and a meeting was held with Parks staff and FPR volunteers to address the concerns.• To guide the future development of the reserve, staff engaged with the community in March 2024 to understand what they wanted to see. This feedback was used to develop a Concept Plan for the reserve, which went out for formal consultation from 29 May to 26 June 2024. Submissions were received from one recognised organisation and 21 individuals. The majority of submitters (13, or 61.9%) supported the Purau Reserve Landscape Concept Plan.• The plan was revised based on feedback to better align with concerns about exotic species.• A decision report (attachment B) was presented to the Board on 10 October 2024.• The Board resolved to lay the report on the table and decided to hold a site meeting with residents and staff to better understand the issues raised by those who made deputations against the proposed Draft Landscape Concept Plan.



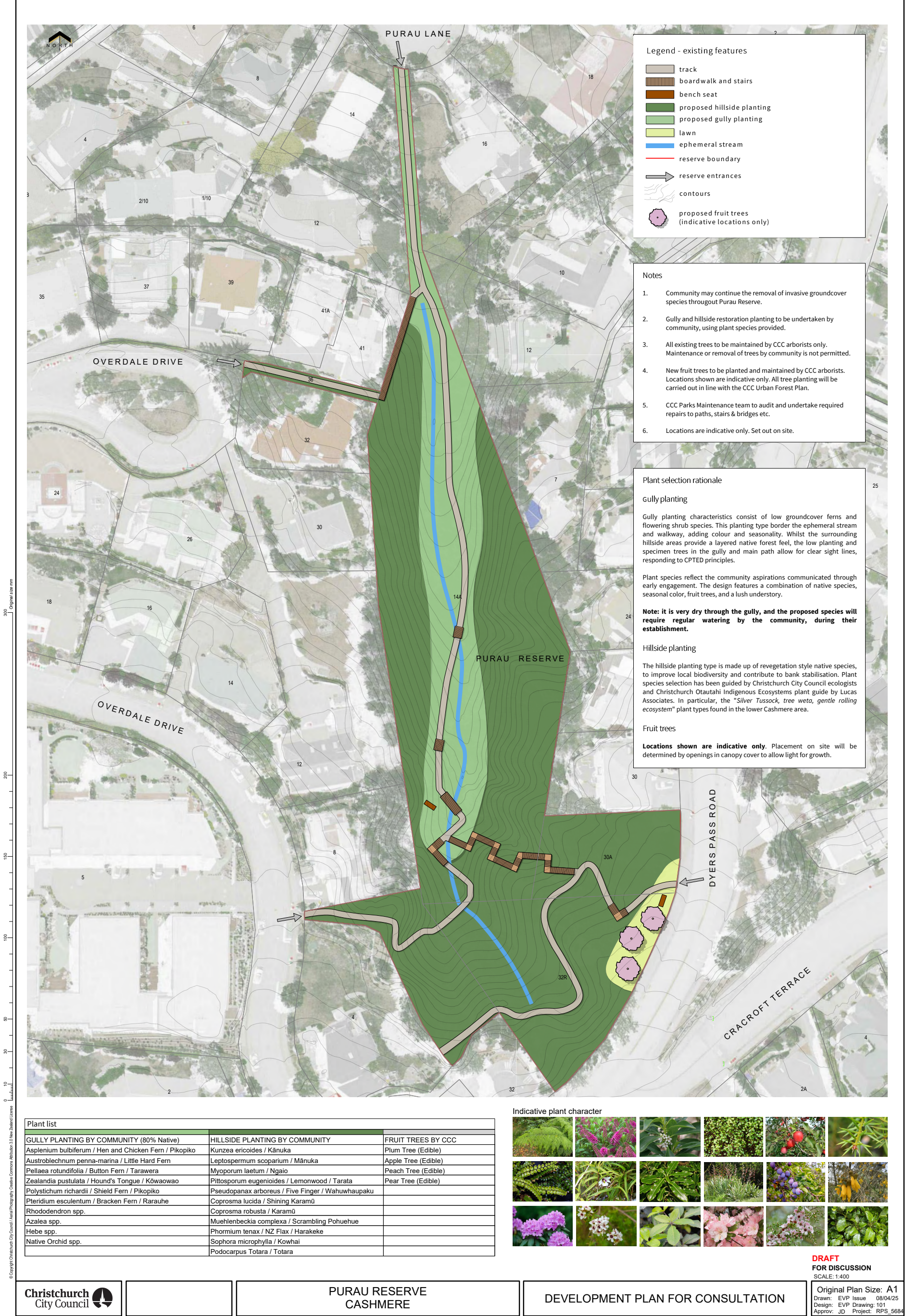
	<ul style="list-style-type: none">Staff provided the Board with individual comments from early engagement, but due to contrasting desires, the Board determined the information was not helpful for their decision-making.Staff met with members of the Board at Purau Reserve on 11 December 2024.The Board members agreed to share the information discussed with absent members and requested that a workshop be held in the new year.
Key Issues	<ul style="list-style-type: none">Impact on Purau Reserve and neighbouring properties if tree removals were to occurThere are many differing community views and opinions about the future of Purau ReservePlan implementation
Next Steps	<ul style="list-style-type: none">Carry out further amendments to the Landscape Concept Plan if requiredStaff to return to the Board to seek approval on the Landscape Concept PlanLift the Stop-work notice
Useful Links	

Attachments Ngā Tāpirihanga

No.	Title	Reference	Page
A	Purau Reserve Landscape Concept Plan	25/707124	7
B	Waihoru Spreydon-Cashmere-Heathcote Community Board Purau Reserve Landscape Concept Plan 10 October 2024 Report	24/1331051	8

Signatories Ngā Kaiwaitohu

Author	Bridie Gibbings - Manager Operations - Parks Development
Approved By	Al Hardy - Manager Community Parks



Waihoru Spreydon-Cashmere-Heathcote Community Board
10 October 2024v

Christchurch
City Council 

9. Purau Reserve Landscape Concept Plan

Reference Te Tohutoro: 24/1331051
Responsible Officer(s) Te Bridie Gibbings, Manager Operations – Parks Development,
Pou Matua: Community Parks
Accountable ELT Andrew Rutledge, Acting General Manager Citizens and Community
Member Pouwhakarae:

1. Purpose and Origin of the Report Te Pūtake Pūrongo

- 1.1 The purpose of this report is to seek approval from the Waihoru Spreydon-Cashmere-Heathcote Community Board for a landscape concept plan (Attachment A) for Purau Reserve.
- 1.2 The report is staff-generated.

2. Officer Recommendations Ngā Tūtohu

That the Waihoru Spreydon-Cashmere-Heathcote Community Board:

1. Receives the information in the Purau Reserve Landscape Concept Plan Report.
2. Notes that the decision in this report is assessed as low significance based on the Christchurch City Council's Significance and Engagement Policy.
3. Approves the landscape plan attached to this report (Attachment A)

3. Executive Summary Te Whakarāpopoto Matua

- 3.1 This report outlines the recent developments, concerns, and proposed actions regarding the management of Purau Reserve. In September 2023, the removal of trees and vegetation by Parks staff and volunteers without prior consultation, raised significant concerns among neighbouring residents. Their primary concerns were potential land destabilisation and loss of the reserve's character. In response, staff engaged a geotechnical engineer to assess the bank's stability, resulting in a report (Attachment B) that identified limited immediate risk to neighbouring properties and recommended new planting to stabilise the bank and reduce runoff.
- 3.2 A stop-work notice was issued, followed by discussions between staff and volunteers from the 'Friends of Purau Reserve' (FPR). Early engagement with the community in March 2024 informed the development of a Draft Landscape Concept Plan, which was subsequently released for public consultation from 29 May to 26 June 2024. Feedback from 21 individuals and one recognised organisation showed a majority support (61.0%) for the proposed plan.
- 3.3 In response to the feedback received, several changes were made to the draft plan, including relocating fruit trees to the road frontage, adding Podocarpus totara to the plant list, and removing Ginkgo biloba.
- 3.4 The purpose of the Landscape Concept Plan is to enable ongoing volunteer efforts while addressing the concerns of neighbouring residents.

4. Background/Context Te Horopaki

- 4.1 Purau Reserve has been a focal point of community efforts since June 2020, with the FPR actively involved in weeding, planting, and creating pathways to enhance the area. However, in September 2023, concerns arose among neighbouring residents regarding the removal of significant amounts of vegetation, including trees, from the reserve without prior consultation. The primary concern was that such activities could potentially destabilise the land, increasing the risk of land instability to neighbouring properties.
- 4.2 Other concerns included the loss of the reserve's character, a lack of consultation with the community, the removal of a plum tree, and the loss of seasonal variation. In response, the Parks Unit engaged a geotechnical engineer to evaluate the situation and provide an assessment of the bank's stability (Attachment B). The report concluded that while there was limited immediate increase in risk, additional planting would help stabilise the bank and mitigate potential runoff in the future.
- 4.3 Subsequent actions included issuing a stop-work notice and convening a meeting with the Manager of Community Parks, Head of Parks and FPR volunteers, to address the concerns raised.
- 4.4 To guide future development and address these issues, staff initiated early engagement with the community in March 2024 to inform a Draft Landscape Concept Plan. The consultation process from 29 May to 26 June 2024 attracted feedback from 102 individuals and three community groups, with the majority expressing support for the proposed plan.
- 4.5 Considering the feedback, adjustments were made to the plan to better align with community expectations and environmental sustainability goals.
- 4.6 The following related memos/information were circulated to the meeting members:

Date	Subject
12 March – 7 April	Early Engagement survey
29 May- 26 June	Draft Landscape Development Plan Consultation
22 August	Amended Draft Landscape Concept Plan

Options Considered Ngā Kōwhiringa Whaiwhakaaro

- 4.7 The following reasonably practicable options were considered and are assessed in this report:
 - 4.7.1 Approve the Purau Reserve Landscape Concept Plan.
- 4.8 The following options were considered but ruled out:
 - 4.8.1 Continue without an approved Landscape Concept Plan.
 - 4.8.2 Only include native plant species in the Landscape Concept Plan.

Options Descriptions Ngā Kōwhiringa

- 4.9 **Preferred Option:** Approve the Purau Reserve Landscape Concept Plan
 - 4.9.1 **Option Description:** This option includes native and exotic species that provide bank stabilisation, addresses concerns raised by neighbours about the reserve's lost look and feel, and incorporates a limited number of fruit trees to replace the removed plum tree.
 - 4.9.2 **Option Advantages**

Approving the landscape plan will facilitate planting around decaying stumps to stabilise the bank, guide the FPR for future working bees, and include neighbours and other interested parties input in its future development.

Waihoru Spreydon-Cashmere-Heathcote Community Board
10 October 2024v

- Aligns with Councils Food Resilience Policy

4.9.3 **Option Disadvantages**

- Includes some species that some respondents do not consider important.

4.10 Continue without an approved Landscape Concept Plan – Consider but ruled out

4.10.1 **Option Description:** This option allows the FPR to continue to volunteer in the reserve without a plan, which has the potentially for FPR to inadvertently carry out works that require Community Board approval as per the Reserves Act 1977.

4.10.2 **Option Advantages**

- Weed species continue to be controlled and planting to continue in Purau Reserve

4.10.3 **Option Disadvantages**

- This option does not allow for the Community Board to exercise its delegated authority to approve and adopt any new landscape plans
- It limits the FPRs ability to strategically plan for future works and development
- Does not consider wider public opinion or views as to how Purau Reserve will develop moving forward.

4.11 Only include native plant species in the Landscape Concept Plan – Considered but ruled out.

4.11.1 **Option Description:** This option only allows native species to be planted in Purau Reserve.

4.11.2 **Option Advantages**

- Meets the desires of some respondents and aligns with Councils biodiversity strategy

4.11.3 **Option Disadvantages**

- This option does not include most neighbours and other interested parties' feedback

Analysis Criteria Ngā Paearu Wetekina

4.11 The ability for FPR Reserve to continue planting and park maintenance works.

5. Financial Implications Ngā Hīraunga Rauemi

Capex/Opex Ngā Utu Whakahaere

	Recommended Option	Option 2 – Decline plans	Option 3 – Only plant native species
Cost to Implement	\$10,000.00	nil	\$10,000.00
Maintenance/Ongoing Costs	nil	nil	nil
Funding Source	#43686 Community Parks Green Asset Renewal. \$5,000.00	N/A	#43686 Community Parks Green Asset Renewal. \$5,000.00
Funding Availability	Partially. Volunteers to seek funding for deficit	N/A	Partially. Volunteers to seek funding for deficit
Impact on Rates	nil	N/A	nil

- 5.1 Any additional maintenance will be absorbed into existing Community Parks Operational budgets.

6. Considerations Ngā Whai Whakaaro

Risks and Mitigations Ngā Mōrearea me ngā Whakamātautau

- 6.1 Not approving the Landscape Concept Plan will potentially place neighbouring properties at risk due to land destabilisation as the reserve may not be planted as recommended in the Purau Reserve Geotechnical Report.
- 6.2 The risk of not approving the landscape concept plan would delay the development of Purau Reserve and prevent the FPR group from continuing to volunteer in the reserve.
- 6.3 There is a possibility of amending the plan to only include native plants, as suggested by some submitters. This approach aligns with the Council's sustainability goals but does not consider the wishes of several neighbouring property owners.

Legal Considerations Ngā Hīraunga ā-Ture

- 6.4 Statutory and/or delegated authority to undertake proposals in the report:
- 6.4.1 Council has the delegation to approve landscape plans and plant trees and shrubs within the park.
- 6.4.2 There is no legal context, issue, or implication relevant to this decision.

Strategy and Policy Considerations Te Whai Kaupapa here

- 6.5 The required decision
- 6.5.1 Aligns with the [Christchurch City Council's Strategic Framework](#). In particular this recommendation is strongly aligned with the community outcomes of a thriving prosperous city and a green, liveable city. The landscape concept plan will allow for the FPR and Christchurch City Council to build climate resilience and positively contribute to increasing tree canopy cover.
- 6.5.2 Is assessed as low significance based on the Christchurch City Council's Significance and Engagement Policy. The level of significance was determined by the fact that the development of the site impacts a small number of residents and park users
- 6.5.3 Is consistent with Council's Plans and Policies.
- 6.6 This report supports the [Council's Long Term Plan \(2024 - 2034\)](#):
- 6.7 Parks, Heritage and Coastal Environment
- 6.7.1 Activity: Parks and Foreshore
- Level of Service: 6.3.7.4 Volunteer participation at community opportunities across parks network - Volunteer hours – maintain or grow compared to previous year
 - Level of Service: 6.8.2.1 Increasing tree canopy in Parks - A net increase in total number of trees is achieved (1:2 replacement policy), with a minimum of 50% of the trees being medium to very large species

Community Impacts and Views Ngā Mariu ā-Hāpori Early Engagement

- 6.8 Early engagement started in March 2024 to help inform the draft plan. A survey was sent out to residents neighbouring Purau Reserve and the Friends of Purau Reserve Volunteer group to find out what they would like for the future of the reserve.

Waihoru Spreydon-Cashmere-Heathcote Community Board
10 October 2024

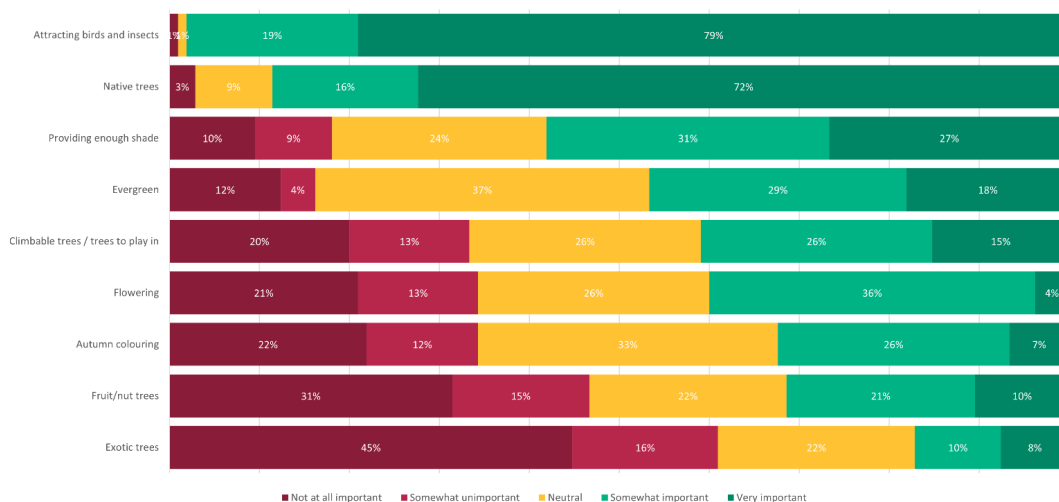
- 6.9 We heard from 102 individuals and three community groups; Friends of Purau Reserve, Friends of Ernle Clark Reserve and Karitane Valley Residents Association.
- 6.10 Respondents were asked how important it was to them that more trees and shrubs are planted in Purau Reserve, and to rate how important or concerning certain aspects are.
- 6.11 Most respondents (94, 89.5%) said it was somewhat or very important to plant more trees and shrubs in Purau Reserve as shown below.

Community views on how important it is to plant more trees and shrubs in Purau Reserve



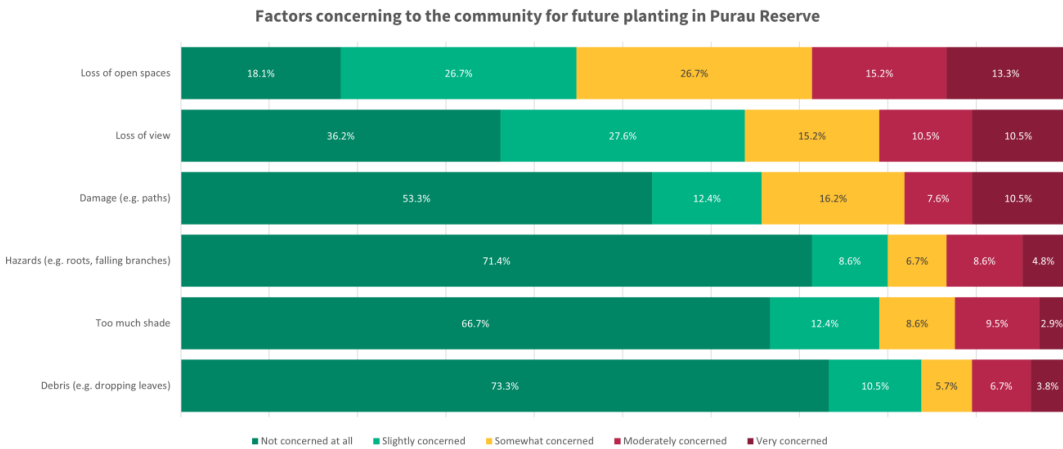
- 6.12 Respondents were asked to rate how important various aspects were to them when thinking about planting more trees and shrubs in the reserve. As shown below, the top three aspects were attracting birds and insects, planting native trees and providing enough shade.

Factors important to the community for future planting in Purau Reserve



- 6.13 Respondents were asked to rate how concerned they were about certain aspects when thinking about planting more trees and shrubs in the reserve. As shown below, the top three aspects of concern were loss of open spaces, loss of view and damage (e.g. paths).

Waihoru Spreydon-Cashmere-Heathcote Community Board
10 October 2024v



6.14 This feedback helped inform the development of the Draft Landscape Concept Plan for Purau Reserve which was then put out for formal public consultation in May/June 2024.

Public Consultation Te Tukanga Kōrerorero

6.15 Consultation on the Draft Landscape Concept Plan for Purau Reserve started on 29 May 2024 and ran until 26 June 2024. An email was sent to 105 key stakeholders, including Friends of Purau Reserve.

Summary of Submissions Ngā Tāpaetanga

6.16 Submissions were made by one recognised organisation, and 21 individuals. All submissions are available on [Kōrero mai | Let's Talk](#)

6.17 A full table of submission feedback is available in **Attachment C**.

6.18 The majority of submitters were in support of the Purau Reserve Landscape Concept Plan. (13, 61.9%).

6.19 Submitters were asked to select which species they would like to see planted in the reserve. They were able to select plant species for the three following categories: Gully plantings, Hillside plantings, and Specimen trees.

6.20 Of the Gully plantings, most submitters (14, 64%) chose Pikopiko (Hen and Chicken Fern), Kōwaowao (Hounds Tounge), and Pikopiko (Shield Fern) as their preferred choice of species to be planted in the gully.

Gully planting species	Responses
Pikopiko (Hen and Chicken Fern)	14
Kōwaowao (Hounds Tounge)	14
Pikopiko (Shield Fern)	14
Rarauhe (Bracken Fern)	13
Tarawera (Button Fern)	13
Orchid	11
Little Hard Fern	11
Hebe	11
Azalea	9
Rhododendron	9

Waihoru Spreydon-Cashmere-Heathcote Community Board
10 October 2024v

- 6.21 Of the Hillside plantings, most submitters chose Kowhai (15, 68%), Mānuka (14, 64%), and Shining Karamū (13, 59%) as their preferred choice of species to be planted on the hillside.

Hillside planting species	Responses
Kowhai	15
Mānuka	14
Shining Karamū	13
Kānuka	12
Ngaio	12
Scrambling Pohuehue	12
Tarata (Lemonwood)	12
Harakeke (NZ Flax)	12
Karamū	11
Wahuwhaupaku (Five Finger)	11

- 6.22 Of the Specimen tree species, the most preferred were Apple tree, Magnolia, and Pear tree, with eight (36%) submitters selecting these species.

Specimen tree species	Responses
Apple Tree	8
Magnolia	8
Pear Tree	8
Plum Tree	7
English Beech	6
Ginkgo	6
Olive	6
Prunus	5
Peach Tree	5
Nyssa sylvatica	5

- 6.23 There were a number of different themes mentioned by submitters in their comments. The key themes were positive comments regarding the gully plantings and native plants, and concerns regarding fruit trees. The top request was for the removal of specific species already present in the reserve.

Theme	Mentions (# of submitters)
Gully planting (including low level, and valley)	5
Native plants	5
Mix of planting	4
Ferns / mosses	4
Fruit trees	4
Fruit / food source	4
Fruit trees	5
Exotic plants / specimen trees / non native	4
Specific species	4
Ability for new trees to survive (light / water / space restrictions)	4
Suitability of proposed plants	4

Waihoru Spreydon-Cashmere-Heathcote Community Board
10 October 2024v

Removal of specific plant / species	5
Retention of specific trees / species	4

6.24 The decision affects the following wards/Community Board areas:

Waihoru Spreydon-Cashmere-Heathcote Community Board

Impact on Mana Whenua Ngā Whai Take Mana Whenua

- 6.25 The decision does not involve a significant decision in relation to ancestral land, a body of water or other elements of intrinsic value, therefore this decision does not specifically impact Mana Whenua, their culture, and traditions.
- 6.26 The decision does not involve a matter of interest to Mana Whenua and will not impact on our agreed partnership priorities with Ngā Papatipu Rūnanga.
- 6.27 The planting of natives along the stream channel is in alignment with the Mahaanui Management Plan

Climate Change Impact Considerations Ngā Whai Whakaaro mā te Āhuarangi

- 6.28 The decisions in this report are likely to:
- 6.28.1 Contribute positively to adaptation to the impacts of climate change.
- 6.28.2 Contribute positively to emissions reductions.
- 6.29 The plans will result in an increase in canopy cover across the city. As trees sequester carbon, this will have a positive impact on the Councils emissions reduction.

7. Next Steps Ngā Mahinga ā-muri

- 7.1 If the Community Board approves the landscape concept plan, the stop work notice will be lifted, allowing FPR to begin implementing the plan and coordinating associated working bees.

Attachments Ngā Tāpirihanga

No.	Title	Reference	Page
A	Purau Reserve Landscape Concept PlanFor Community Board Meeting	24/1549566	
B	Purau Reserve Geotechnical Report	24/1338384	
C	Submission Table - Purau Reserve Landscape Plan	24/1573022	

In addition to the attached documents, the following background information is available:

Document Name – Location / File Link
Not applicable

Waihoru Spreydon-Cashmere-Heathcote Community Board
10 October 2024v

Christchurch
City Council 

Signatories Ngā Kaiwaitohu

Authors	Bridie Gibbings - Manager Operations - Parks Development Krystle Anderson - Engagement Advisor
Approved By	Al Hardy - Manager Community Parks Rupert Bool - Acting Head of Parks

4. Community Funding Information Session

Reference Te Tohutoro: 25/686464




Presenter(s) Te Kaipāhō : Joshua Wharton, Community Funding Team Leader
Marianne Lomax, Community Governance Manager

1. Detail Te Whakamahuki

Timing	This information session is expected to last for 30 minutes.
Purpose / Origin of the Information Session	<p>The purpose of this information session is to update elected members on the changes to Council's contestable funding for the 2025/26 financial year; including the new funding platform, SmartyGrants.</p> <p>Staff will also provide information on the range of community funding that is available to community organisations through Council.</p> <p>This information session is being provided in advance of a comprehensive review that will be presented to the incoming Council and Community Boards in late-2025.</p>
Background	<p>Council's previous funding platform, Salesforce, was at the end of its lifecycle as an IT platform and was costing Council significant OpX to maintain.</p> <p>The new funding platform, SmartyGrants is used by over half of the TLA's across New Zealand (<i>including Environment Canterbury and Auckland City</i>), as well as various community trusts and funding providers. It is an industry-leading solution and a social-enterprise, with fees less than ¼ other competitive options available.</p> <p>Compared with the outgoing solution, SmartyGrants will bring a range of improvements to Council's community funding schemes for the community organisations who apply, staff and elected members alike.</p> <p>Included as Attachment A, staff have provided a summary of the contestable and non-contestable funding schemes that are available to community organisations in Christchurch. The intention is to inform elected members of these offerings, so that in interactions with community organisations, quality advice can be provided.</p>
Key Points	<ul style="list-style-type: none"> • Improved reporting capability. • Ease of application for groups, assessment for staff, and consideration for elected members. <ul style="list-style-type: none"> ○ SmartyFile ○ Mapping tool ○ Viewing previous applications ○ Ability to present a cohesive picture of all CCC funding (<i>and detail where groups are receiving funding from within Council</i>) • The impact on Community Board splits. • Presentations by groups before elected member considerations of contestable funding.

	<ul style="list-style-type: none"> Clarification around funding of food, trustees, and other general criteria.
Next Steps	<ul style="list-style-type: none"> A number of funds are <u>already</u> being administered through Smartygrants. Elected members will note an immediate improvement to the presentation of decision matrices and reports on grant-spend. The remaining funds will be transferred to the new platform, before decommissioning Salesforce at the start of the new Financial Year. Staff will collect and review community feedback on the changes made and adjust/improve the new platform and any processes iteratively over the coming year.
Useful Links	<ul style="list-style-type: none"> https://ccc.govt.nz/culture-and-community/community-funding https://ccc.smartygrants.com.au/

Attachments Ngā Tāpirihanga

No.	Title	Reference	Page
A 	CCC - Community Funding Scheme Overview	25/479881	19
B 	Environmental Fund Comparisons	25/479883	20
C 	Community Board Splits	25/504132	21

Signatories Ngā Kaiwaitohu

Authors	Josh Wharton - Team Leader Community Funding Maryanne Lomax - Manager Community Governance, Fendalton-Waimairi-Harewood
Approved By	Gary Watson - Manager Community Partnerships

CHRISTCHURCH
CITY COUNCIL

Funding Schemes

CITYWIDE COMMUNITY

STRENGTHENING COMMUNITIES FUND - COMMUNITY
STRENGTHENING COMMUNITIES FUND - ARTS
STRENGTHENING COMMUNITIES FUND - SPORT & RECREATION
DISCRETIONARY RESPONSE FUND
CITY PLACEMAKING FUND
PLACE PARTNERSHIPS FUND

ENVIRONMENTAL

SUSTAINABILITY FUND
BIODIVERSITY FUND
ENVIRONMENTAL PARTNERSHIPS FUND
COMMUNITY WATERWAYS PARTNERSHIP FUND
WASTE MINIMISATION FUND

COMMUNITY BOARDS

STRENGTHENING COMMUNITIES FUND - x6
DISCRETIONARY RESPONSE FUND - x6
YOUTH DEVELOPMENT FUND - x5
KORU FUND - Waitai
OFF THE GROUND FUND - Waihoru & Waipuna

EVENTS

EVENTS & FESTIVALS SPONSORSHIP FUND
SMALL SPORTS EVENTS FUND
EVENTS SEEDING FUND

EXTERNAL FUNDS

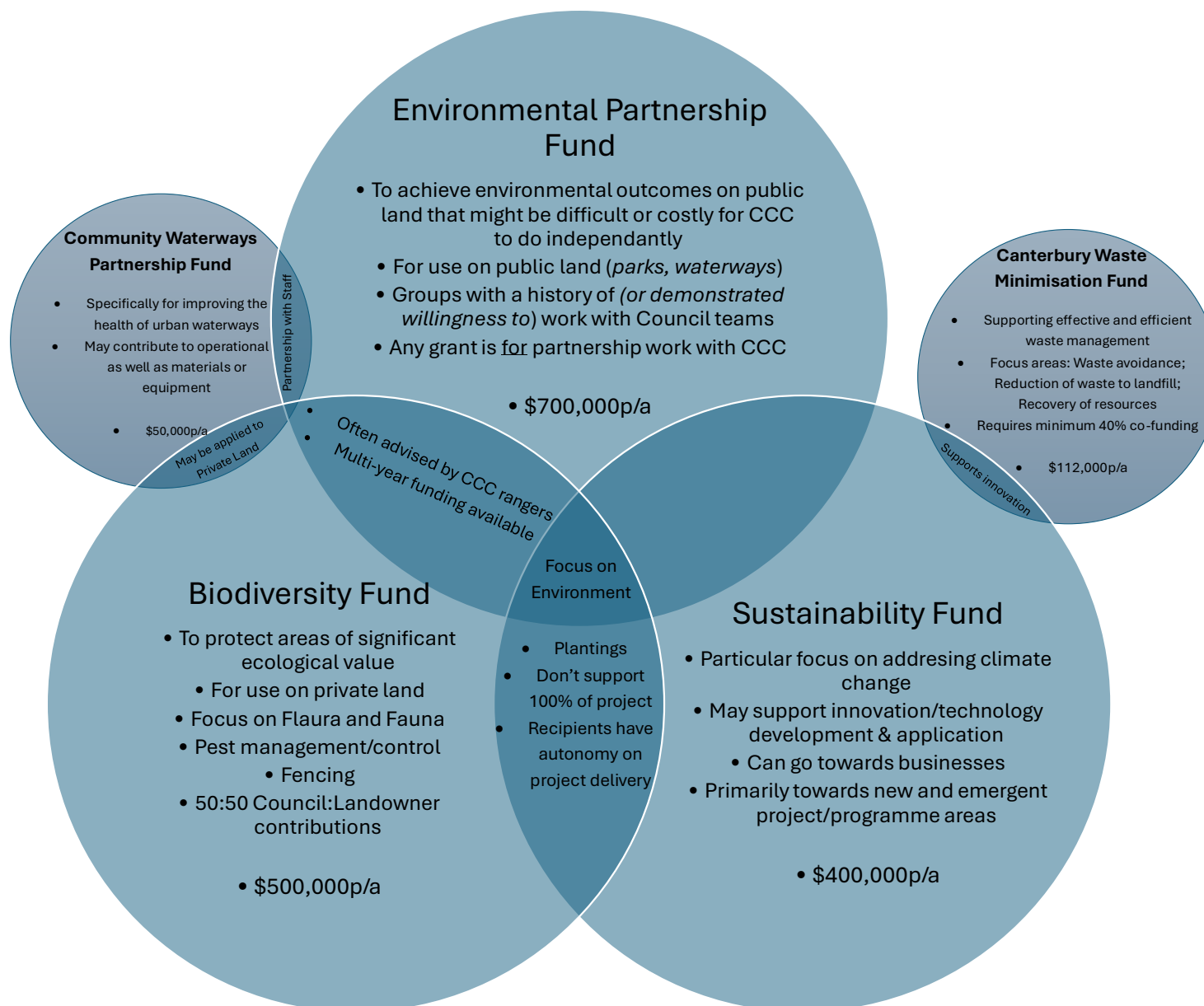
CREATIVE COMMUNITIES SCHEME
MAYOR'S WELFARE CHARITABLE TRUST

OTHER SCHEMES

CAPITAL ENDOWMENT FUND
COMMUNITY LOANS
SPECIAL LOANS
COMMUNITY ORGANISATION RATES REMISSIONS
BUSINESS IMPROVEMENT DISTRICT GRANT

NON-CURRENT
SCHEMES

Better Off Fund, Community Activation Fund, Community Resilience Partnership Fund, Red Zone Transformative Land Use Fund, Heritage Fund, Intangible Heritage Fund, Shape Your Place Fund, Arts Culture Sponsorship, City Identity Fund



Board Splits

If all previously split projects are now funded by the one Board where the majority of the people benefiting come from, the differences to each Board's budget is below:

Board	Amount
Banks Peninsula	\$400
Coastal-Burwood-Linwood	\$13,300
Fendalton-Waimairi-Harewood	-\$2,850
Halswell-Hornby-Riccarton	-\$26,400
Papanui-Innes-Central	\$4,200
Spreydon-Cashmere-Heathcote	\$13,450

Note:

This takes into account the group being funded for the same amount as they were last year.

It also includes multi-year funded projects, although, all existing multi-year grants are in their final year of the agreement(s), so the estimated budget impact has been calculated using the same Boards that funded them in Year 1 of their agreement.

5. Elected Members' Information Exchange Te Whakawhiti Whakaaro o Te Kāhui Amorangi

This item provides an opportunity for Board Members to update each other on recent events and/or issues of relevance and interest to the Board.

Karakia Whakakapi

Tukuna te wairua kia rere ki te taumata Ko te matatika te mātāpono hei arahi i ngā mahi Ka arotahi te tira kia eke panuku, kia eke Tangaroa Haumi e, hui e, tāiki e	<i>May the spirit be released to soar to its zenith Ethics is the principle that guides our work As we focus on the success for our community Bring together! Gather together and bind together!</i>
---	--