

---

## Waipuna Halswell-Hornby-Riccarton Community Board Information Session/Workshop AGENDA

---

### Notice of Information Session/Workshop Te Pānui o te Hui:

A Waipuna Halswell-Hornby-Riccarton Community Board Information Session/Workshop will be held on:

**Date:** Thursday 10 April 2025  
**Time:** 4 pm  
**Venue:** Rārākau: Riccarton Centre,  
199 Clarence Street, Christchurch

---

#### Membership Ngā Mema

Chairperson	Marie Pollisco
Deputy Chairperson	Helen Broughton
Members	Sarah Brunton
	Henk Buunk
	Tyla Harrison-Hunt
	Andrei Moore
	Debbie Mora
	Mark Peters

---

#### Principal Advisor

Bailey Peterson  
Manager Community Governance  
Tel: 941 6743  
[Bailey.Peterson@ccc.govt.nz](mailto:Bailey.Peterson@ccc.govt.nz)

8 April 2025

#### Meeting Advisor

Faye Collins  
Community Board Advisor  
Tel: 941 5108  
[faye.collins@ccc.govt.nz](mailto:faye.collins@ccc.govt.nz)

**Website:** [www.ccc.govt.nz](http://www.ccc.govt.nz)

**Note:** This forum has no decision-making powers and is purely for information sharing.

**To watch the meeting live, or previous meeting recordings, go to:**

<https://www.youtube.com/@waipunahalswell-hornby-ric5806/streams>

**To view copies of Agendas and Notes, go to:**

<https://www.ccc.govt.nz/the-council/meetings-agendas-and-minutes/>



**TABLE OF CONTENTS NGĀ IHIRANGI**

**1. Apologies Ngā Whakapāha ..... 3**

**INFORMATION SESSION AND WORKSHOP ITEMS**

**2. Community Funding Information Session..... 5**

The time allocated for this Information Session/Workshop is 30 minutes.

## **1. Apologies Ngā Whakapāha**

Apologies will be recorded at the meeting.



## 2. Community Funding Information Session

Reference Te Tohutoro: 25/637210




Presenter(s) Te Kaipāhō : Joshua Wharton, Community Funding Team Leader  
Marianne Lomax, Community Governance Manager

### 1. Detail Te Whakamahuki

<b>Timing</b>	This information session is expected to last for 30 minutes.
<b>Purpose / Origin of the Information Session</b>	<p>The purpose of this information session is to update elected members on the changes to Council's contestable funding for the 2025/26 financial year; including the new funding platform, SmartyGrants.</p> <p>Staff will also provide information on the range of community funding that is available to community organisations through Council.</p> <p>This information session is being provided in advance of a comprehensive review that will be presented to the incoming Council and Community Boards in late-2025.</p>
<b>Background</b>	<p>Council's previous funding platform, Salesforce, was at the end of its lifecycle as an IT platform and was costing Council significant OpX to maintain.</p> <p>The new funding platform, SmartyGrants is used by over half of the TLA's across New Zealand (<i>including Environment Canterbury and Auckland City</i>), as well as various community trusts and funding providers. It is an industry-leading solution and a social-enterprise, with fees less than ¼ other competitive options available.</p> <p>Compared with the outgoing solution, SmartyGrants will bring a range of improvements to Council's community funding schemes for the community organisations who apply, staff and elected members alike.</p> <p>Included as <b>Attachment A</b>, staff have provided a summary of the contestable and non-contestable funding schemes that are available to community organisations in Christchurch. The intention is to inform elected members of these offerings, so that in interactions with community organisations, quality advice can be provided.</p>
<b>Key Points</b>	<ul style="list-style-type: none"> <li>• Improved reporting capability.</li> <li>• Ease of application for groups, assessment for staff, and consideration for elected members. <ul style="list-style-type: none"> <li>○ SmartyFile</li> <li>○ Mapping tool</li> <li>○ Viewing previous applications</li> <li>○ Ability to present a cohesive picture of all CCC funding (<i>and detail where groups are receiving funding from within Council</i>)</li> </ul> </li> <li>• The impact on Community Board splits.</li> </ul>

	<ul style="list-style-type: none"> <li>• Presentations by groups before elected member considerations of contestable funding.</li> <li>• Clarification around funding of food, trustees, and other general criteria.</li> </ul>
<b>Next Steps</b>	<ul style="list-style-type: none"> <li>• A number of funds are <u>already</u> being administered through Smartygrants. Elected members will note an immediate improvement to the presentation of decision matrices and reports on grant-spend.</li> <li>• The remaining funds will be transferred to the new platform, before decommissioning Salesforce at the start of the new Financial Year.</li> <li>• Staff will collect and review community feedback on the changes made and adjust/improve the new platform and any processes iteratively over the coming year.</li> </ul>
<b>Useful Links</b>	<ul style="list-style-type: none"> <li>• <a href="https://ccc.govt.nz/culture-and-community/community-funding">https://ccc.govt.nz/culture-and-community/community-funding</a></li> <li>• <a href="https://ccc.smartygrants.com.au/">https://ccc.smartygrants.com.au/</a></li> </ul>

## Attachments Ngā Tāpirihanga

No.	Title	Reference	Page
A 	CCC - Community Funding Scheme Overview	25/479881	7
B 	Environmental Fund Comparisons	25/479883	8
C 	Community Board Splits	25/504132	9

## Signatories Ngā Kaiwaitohu

<b>Authors</b>	Josh Wharton - Team Leader Community Funding Maryanne Lomax - Manager Community Governance, Fendalton-Waimairi-Harewood
<b>Approved By</b>	Gary Watson - Manager Community Partnerships

CHRISTCHURCH  
CITY COUNCIL

# Funding Schemes

## CITYWIDE COMMUNITY

STRENGTHENING COMMUNITIES FUND - COMMUNITY  
STRENGTHENING COMMUNITIES FUND - ARTS  
STRENGTHENING COMMUNITIES FUND - SPORT & RECREATION  
DISCRETIONARY RESPONSE FUND  
CITY PLACEMAKING FUND  
PLACE PARTNERSHIPS FUND

## ENVIRONMENTAL

SUSTAINABILITY FUND  
BIODIVERSITY FUND  
ENVIRONMENTAL PARTNERSHIPS FUND  
COMMUNITY WATERWAYS PARTNERSHIP FUND  
WASTE MINIMISATION FUND

## COMMUNITY BOARDS

STRENGTHENING COMMUNITIES FUND - x6  
DISCRETIONARY RESPONSE FUND - x6  
YOUTH DEVELOPMENT FUND - x5  
KORU FUND - Waitai  
OFF THE GROUND FUND - Waihoru & Waipuna

## EVENTS

EVENTS & FESTIVALS SPONSORSHIP FUND  
SMALL SPORTS EVENTS FUND  
EVENTS SEEDING FUND

## EXTERNAL FUNDS

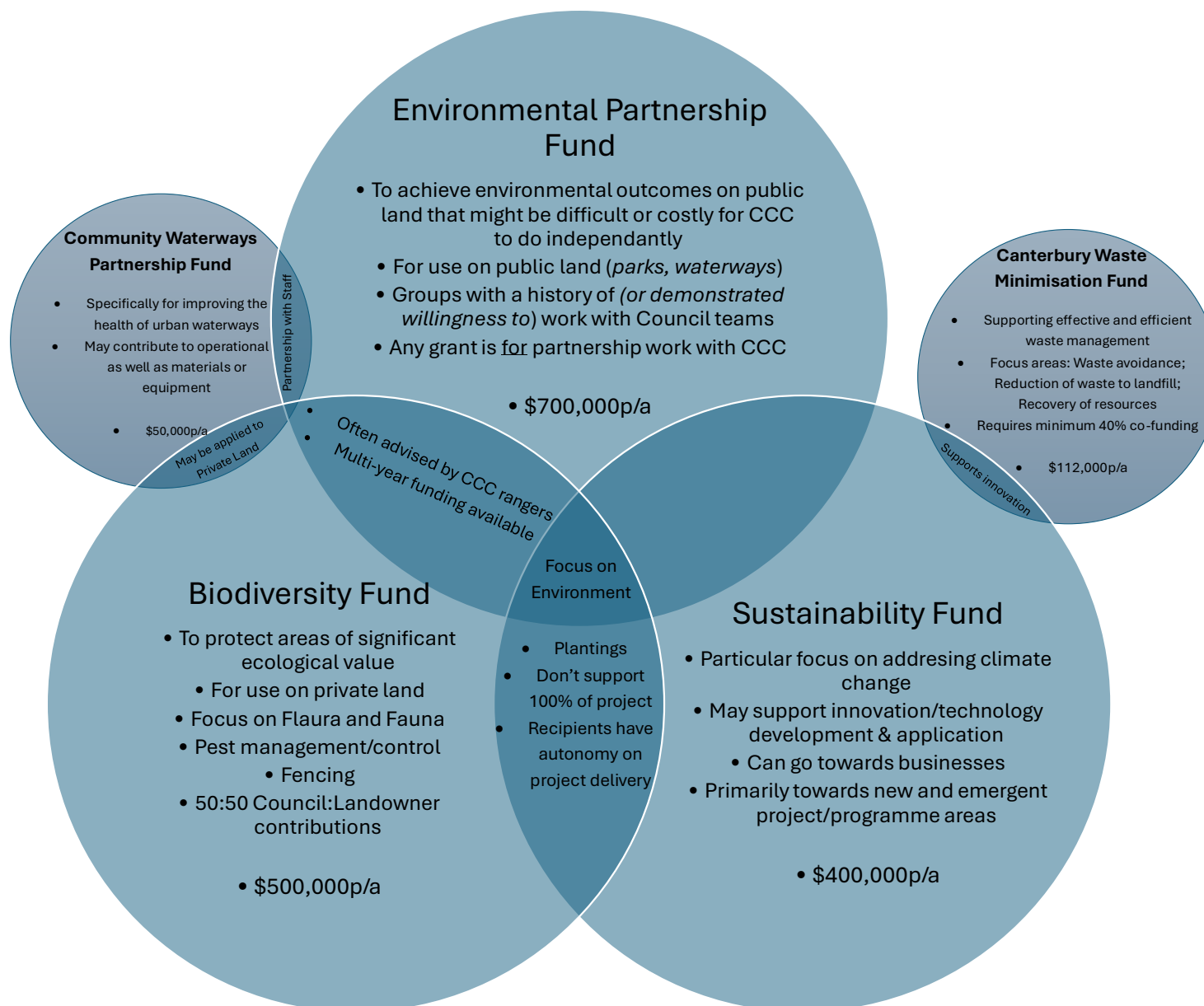
CREATIVE COMMUNITIES SCHEME  
MAYOR'S WELFARE CHARITABLE TRUST

## OTHER SCHEMES

CAPITAL ENDOWMENT FUND  
COMMUNITY LOANS  
SPECIAL LOANS  
COMMUNITY ORGANISATION RATES REMISSIONS  
BUSINESS IMPROVEMENT DISTRICT GRANT

NON-CURRENT  
SCHEMES

Better Off Fund, Community Activation Fund, Community Resilience Partnership Fund, Red Zone Transformative Land Use Fund, Heritage Fund, Intangible Heritage Fund, Shape Your Place Fund, Arts Culture Sponsorship, City Identity Fund





### Board Splits

If all previously split projects are now funded by the one Board where the majority of the people benefiting come from, the differences to each Board's budget is below:

Board	Amount
Banks Peninsula	\$400
Coastal-Burwood-Linwood	\$13,300
Fendalton-Waimairi-Harewood	-\$2,850
Halswell-Hornby-Riccarton	-\$26,400
Papanui-Innes-Central	\$4,200
Spreydon-Cashmere-Heathcote	\$13,450

### Note:

*This takes into account the group being funded for the same amount as they were last year.*

*It also includes multi-year funded projects, although, all existing multi-year grants are in their final year of the agreement(s), so the estimated budget impact has been calculated using the same Boards that funded them in Year 1 of their agreement.*