

**Te Pātaka o Rākaihautū Banks Peninsula Community  
Board Information Session/Workshop  
MINUTES ATTACHMENTS**

---

**Date:** Tuesday 22 April 2025  
**Time:** 10.00 am  
**Venue:** Lyttelton Community Boardroom,  
25 Canterbury Street, Ōhinehou Lyttelton

---

<b>TABLE OF CONTENTS NGĀ IHIRANGI</b>	<b>PAGE</b>
<b>3. Steadfast - Cass Bay Residents' Association Building Project (Site Visit)</b>	
A. Cass Bay Residents Association Handout - Te Pātaka o Rākaihautū Banks Peninsula Community Board - 22 April 2025.....	3
<b>5. Pūrau Foreshore and Reserves Development</b>	
A. Item 5 - Pūrau Foreshore and Reserves Development - Te Pātaka o Rākaihautū Banks Peninsula Community Board - 22 April 2025.....	4
<b>6. Lyttelton Port Masterplan</b>	
A. Item 6 - Lyttelton Port Masterplan - Te Pātaka o Rākaihautū Banks Peninsula Community Board - 22 April 2025.....	14

---



**Cass Bay Residents Association**

**Notes on their progress to develop a community facility and Emergency Hub.**

- Maori called this bay Motukauatirahi/Cass bay which means the "the big fire making grove" because they came here to collect Kaikomako and mahoe trees to make fire. These species have been reintroduced to the reserve as part of the Cass Bay community's regeneration plans.
- In most recent European times this area was farmed by the Allan and Wallace families up until it was acquisitioned to become the "Cass Bay Armament Depot" in 1945, Noeline Allan has lived here all oh her life.
- Cass Bay locals had a good relationship with the personnel and joined them for movie evenings and other activities.
- The "garage" was bought and hurriedly relocated form HMNZS Tasman in Lyttelton in 1956, where is had been a shipwright's shop, to house large vehicles. We have a signed affidavit from Robert Allan who witnessed this happening. It was described at the time as in very poor condition due to lack of maintenance and re-erected by the resident personnel due to lack of funds to employ contractors.
- Robert also states that the shed next to the "garage" was relocated from another site within the depot, where it had been probably used as a garden shed. At a later date, the Navey cadets relocated it to its current position and had to largely rebuilt it due to its poor condition.
- 1965-the first sections were sold in the new Cass Bay subdivision. The Navy Cadets were given permission to use some of the government buildings.
- About the end of the 1980's the Navy Cadets substantially altered the "garage" to use the building as a classroom and store.
- In the 1990's the building was used by locals from Cass Bay and Corsair Bay for a popular weekly playgroup.
- The Cass Bay community had an ongoing involvement with the buildings which were also used for social functions like barn dances, pot luck dinners and Halloween parties, as well as Residents Association meetings.
- In 2006 When Banks Peninsula District Council amalgamated with Christchurch City Council a meeting was held between the CCC, Cass Bay Residents Association, Navy Cadets and Brian Downey (who had a nursery on site) and it was deemed that the buildings would not suit the communities needs and the gates were locked which prevented local access. The other organisations continued to use the space.
- 2020- the Cass Bay community stated a riparian planting project as part of the Whaka Ora Healthy Harbour Initiative. They have since planted 10000 natives and continue to also develop the reserve and new tracks with over 2000 volunteer hours last year.
- January 2024- the gates were opened to allow public access again.

# Pūrau Foreshore & Reserves Development

Te Pātaka o Rākaihautū Banks Peninsula  
Community Board

Information Session:

22 April 2025, 10:00am

## Project Area



- The Pūrau Recreation Ground is located at 187 Pūrau Avenue and is adjacent Pūrau Stream.
- The Pūrau Foreshore Reserve extends along the eastern and western sides of Pūrau Stream on the seaward side of Pūrau Ave.



## Background

---

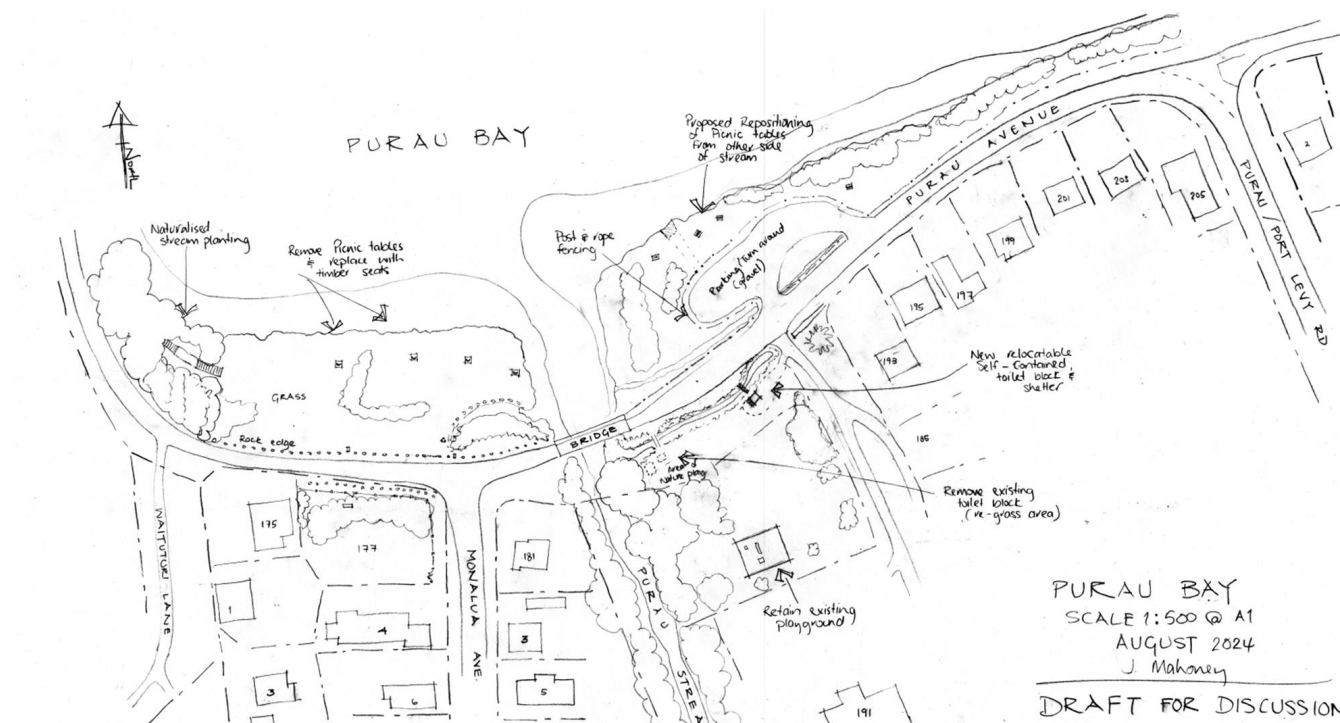
- The Council approved funding for the development of Pūrau Foreshore and Reserves in the FY24 – FY34 Long Term Plan (LTP)
- Scope for the project is to develop a landscape plan to provide better public amenity while protecting the foreshore and recreational play ground from further environmental damage.
- The public toilet block has been closed since the Canterbury Earthquakes and has an New Building Standard (NBS) of 25%.

# Early engagement with the local community

Pūrau residents group  
meeting (September 2024)

## Feedback

- Parking use
- Transport and launch of small boats off western shoreline
- Request for historical signage to include torpedo boat





# Preliminary Concept Design



## Design Comments

- Provide an accessible connection to the public toilet and play space.
- New nature play features and an inclusive play item.
- Replace the existing toilet with a relocatable, self contained toilet block.
- Relocation of existing picnic tables from the western side of the foreshore to the eastern side.
- Provide new timber seats to the eastern foreshore.
- Formalise and reshape the carparking area to the east
- New rock edge to the western foreshore road frontage
- More naturalised planting
- New park signage and interpretive signage.



# Preliminary Concept Design – Recreation Ground



## Project considerations

---

The available project budget is across two projects:

ID: 18100 Pūrau Foreshore & Reserves Development

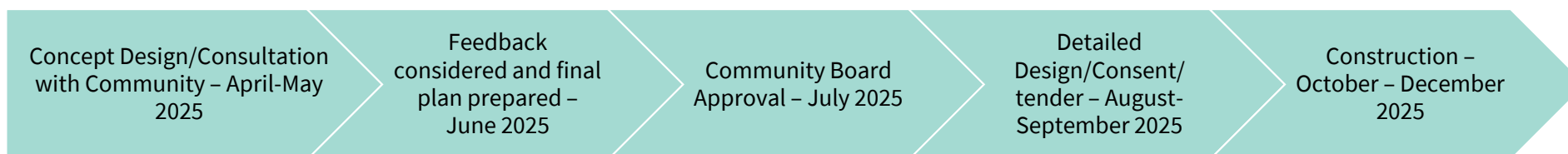
- Budget available \$170,000
- Construction & Consent \$145,000
- Design/PM/Construction Management \$25,000

ID: 65442 Public Toilets Banks Peninsula Facilities Renewal

- Budget available \$350,000
- Demolition \$10,000
- Construction & Consents \$320,000
- Design/PM/Construction Management \$20,000

## Project considerations continued

- Accessibility
  - Sealed path connecting the footpath to the public toilet and play space to provide year round access for all
  - Selection of play equipment – whilst not wheelchair accessible, there are opportunities to use the equipment in different ways depending on ability
  - Inclusive furniture – wheelchair accessible picnic table
- Timeline:



## Our community engagement approach

Sense check the preliminary concept plan with the community

- Signs on site with link to the consultation website.
- Information provided to local residents associations/groups and other key stakeholders
- Emails to previous submitters



*Sign is yet to be designed – this is our standard template.*

# Questions



→ Richard Hill

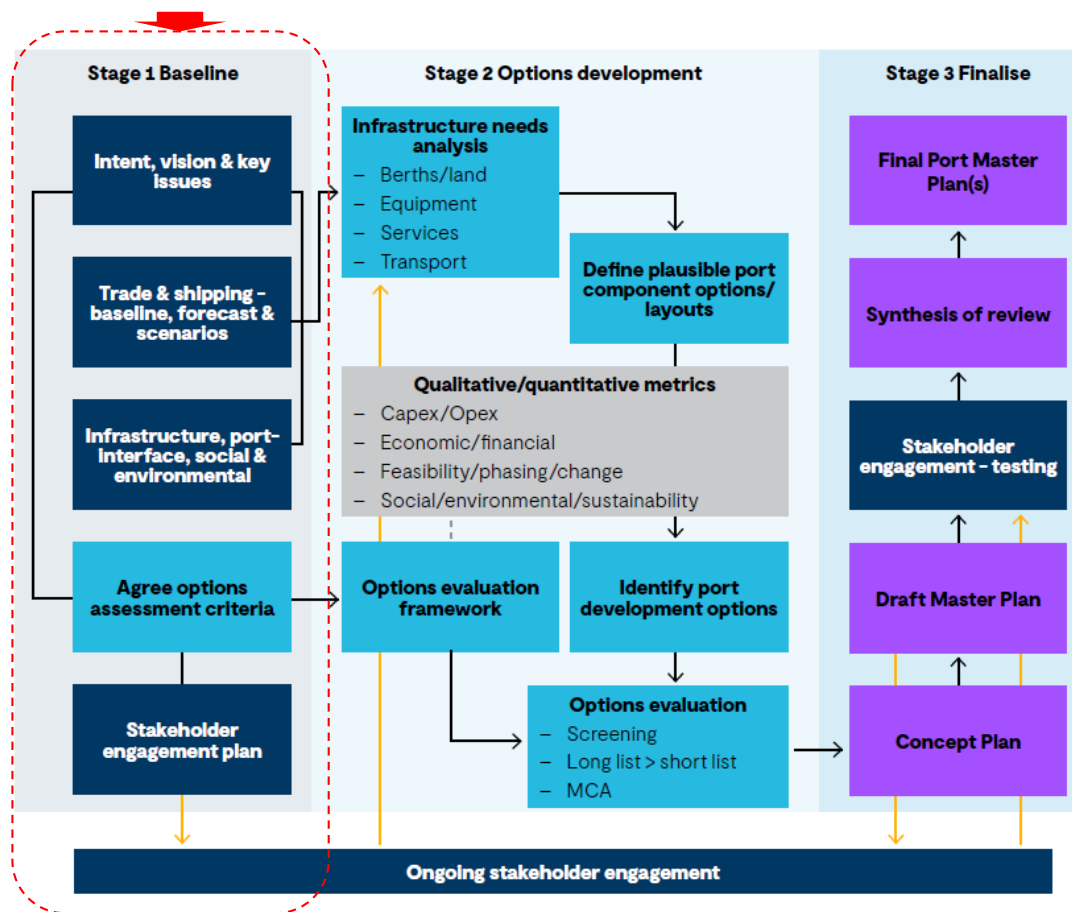
# Port Master Plan for Lyttelton Port

Study introduction

# Welcomed



# Port master planning methodology



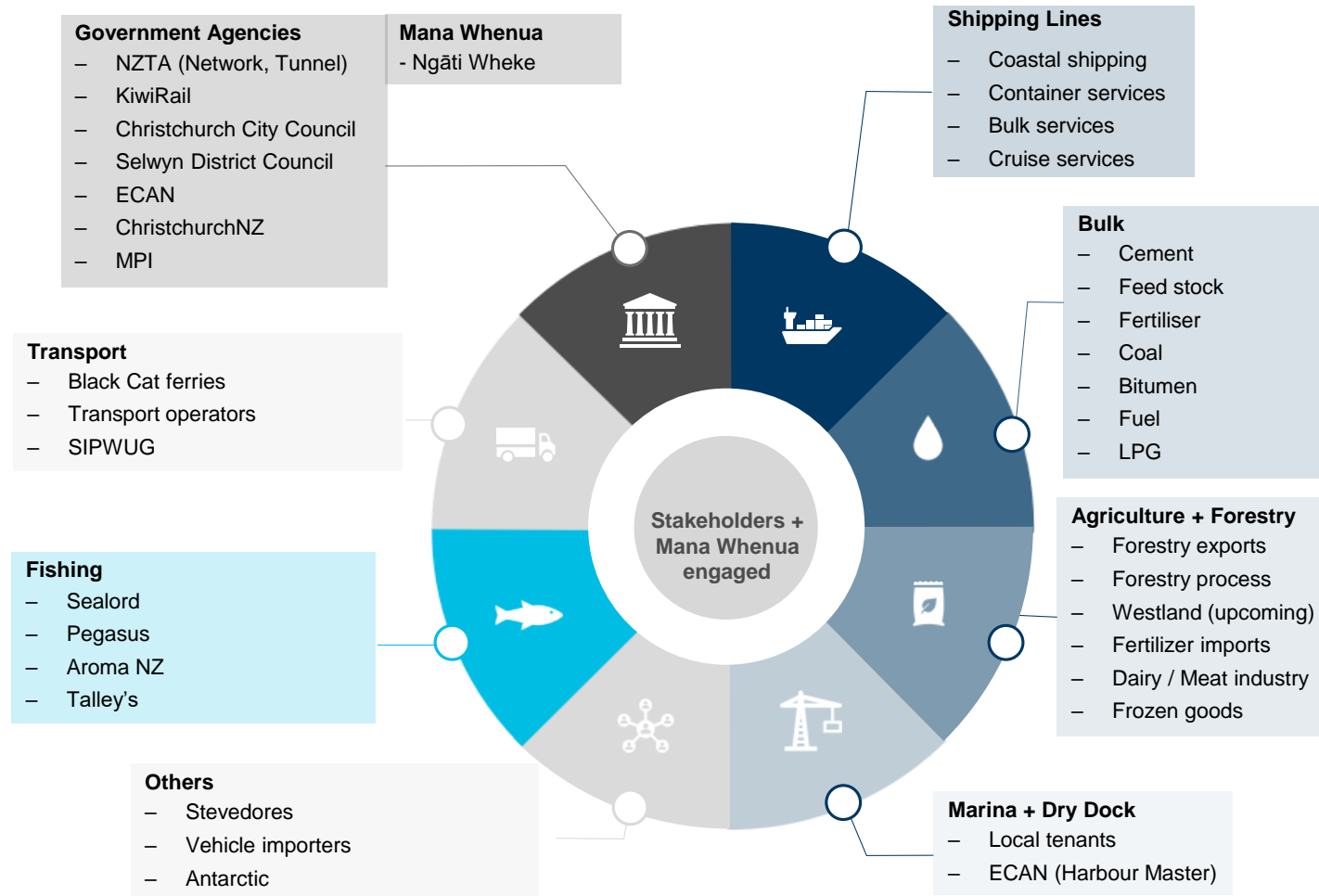
## SCOPE

- 30 YEAR TIME FRAME
- PORT FOOTPRINT & ENVIRONS, FREIGHT NETWORKS + INLAND TERMINALS
- ALL LPC SERVICES AND INTERACTIONS

## TIMELINE

	2025	QTR 1	QTR 2	QTR 3	QTR 4
Baseline					
Options					
Finalise					
Community survey					

# LPC current engagement snapshot



# LPC proposed community engagement

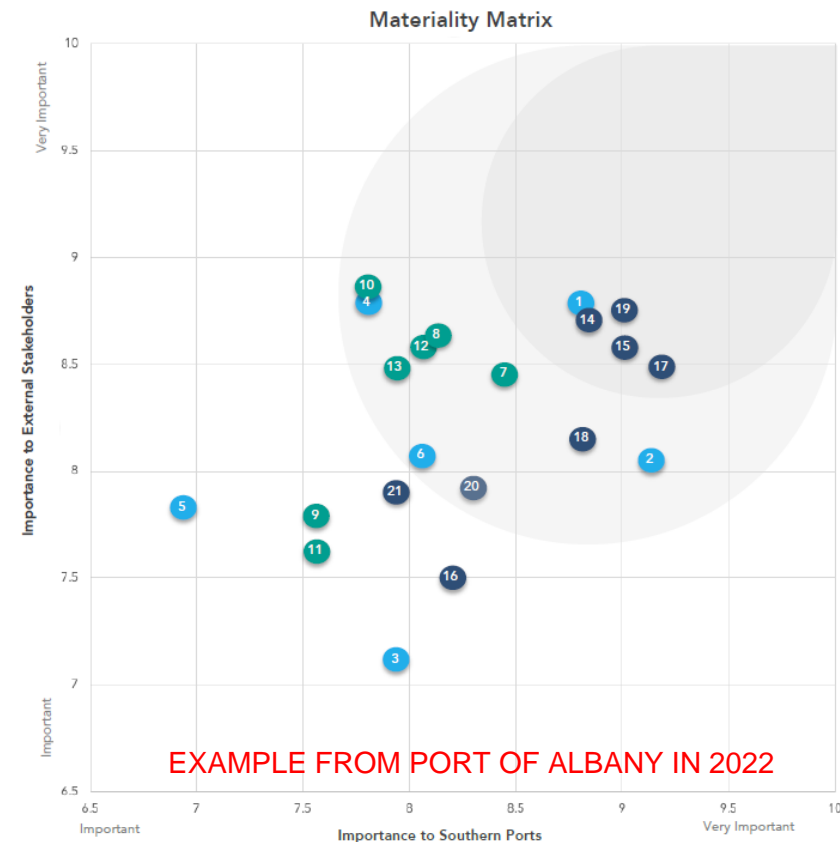
- Engagement exercise to help us prioritise the key issues
- This will involve an online survey open to public, staff, industry
- Use of online platforms like 'Survey Monkey' and supported by Facebook / other social media outlets
- A 3-4 week period to receive responses supported by media release
- In parallel community drop-in opportunities in the Township

*Within the Survey stakeholders would be asked to:*

- Identify their stakeholder group i.e. internal / external, port tenant, regulator, exporter/importer, transport operator, local community etc
- Rank/score each themed 'important issue' between 1 (lowest) to 10 (highest)
- Provide comments / views on the 'important issues'
- Raise / provide comment on additional 'important issues' relevant to the study
- Answer a question about 'one issue that they would change' at the Port of Lyttelton and its networks if they could.

PEOPLE & PARTNERSHIPS	ENVIRONMENT	PROSPERITY
1. Ensuring the Safety & Security of people at and around the port	7. Managing potential Port 'Interface' Impacts (eg. dust, noise, stormwater)	14. Supporting Great Southern Regional Growth & Confidence
2. Clarifying the 'Vision' for the Port of Albany	8. Ensuring a focus on Sustainability	15. Facilitating / Supporting Future Port Development (Trade Growth & Diversity)
3. Management of Separation Distances / Port Buffers.	9. Facilitating 'Green/Renewable Energy' Partnerships	16. Facilitating increased Tourism activity (ie. cruise shipping / related activities)
4. Investigating Local Supply Opportunities	10. Focussing on Safe & Clean Shipping	17. Ensuring 'fit for purpose' assets
5. Increasing public education & awareness of port activities	11. Addressing Climate Change Resilience & Adaptation (eg. sea level rise, storm events etc)	18. Ensuring Business Flexibility, Resilience & Adaptation
6. Facilitating Waterfront Connections with the City and The Mounts area	12. Managing & preserving the environment & biodiversity around the port catchment	19. Ensuring Efficient and Protected Transport Corridors (ie. road, rail & sea channels)
	13. Robust management of future dredging & land reclamation	20. Exploring New Technologies / Digitalisation / 'Smart Operations'
		21. Exploring joint venture partnerships / industry opportunities for future development

EXAMPLE FROM PORT OF ALBANY IN 2022



EXAMPLE FROM PORT OF ALBANY IN 2022

NB. Matrix commences from 6.5, as all important issues were ranked highly above 6.5.

# Community interests in relation to the port

## Important issues in relation to the port we are aware of:

- Reductions in environmental pollution (air, water, noise and light)
- Protection of all marine life, including but not limited to invertebrates, vertebrates, mammals, birds, plants, algae, fungi, protists, single-celled microorganisms etc. i.e. the whole marine ecosystem.
- Public access to the waterfront to be allowed as much as possible (i.e. outside of the port's secure operations)
- Good public transport links between the ferry, buses into Christchurch and walking into Lyttelton township.
- Advocate for LPC to remove all derelict infrastructure that it has been paid out for to reduce biosecurity risk and support the health of Whakaraupō Lyttelton Harbour

