

Canterbury Regional Landfill Joint Committee
MINUTES ATTACHMENTS

Date: Monday 7 April 2025
Time: 12 pm
Venue: Committee Room 2, Level 2, Civic Offices,
53 Hereford Street, Christchurch

TABLE OF CONTENTS NGĀ IHIRANGI	PAGE
9. Amendments to Transwaste Canterbury Limited Constitution and Shareholders Agreement	
A. TCL Briefing - Canterbury Regional Landfill Joint Committee - 7 April 2025.....	3



Transwaste Canterbury Ltd

Canterbury Regional
Landfill Joint Committee

7th April 2025 -12.00,
Room 2, level 2, Civic
offices

- **Gill Cox** – Chair, Transwaste Canterbury
- **Hayden Leach** – Regional Manager – Canterbury Landfill & Energy WMNZ
- **Jeremy Parker** – Commercial Manager, Transwaste Canterbury

Contents

	<u>Page</u>
1. Interim results to December 2024	3
2. Forecast Financial Result 2024	4
3. 2026/28 Draft Statement of Intent	6
4. Milestones	7
5. What Next	9
6. Competition	12
7. Price	13
8. Sustainability – LFG	15
9. Truck Trial	18
10. Capital Projects Energy	20
11. Tiromoana Bush	23
12. Questions	26

Interim Result for 6 months to December 2024

	<u>Dec 24</u>	<u>SOI</u>	<u>Dec 23</u>
Tonnes received	172,568	178,234	185,415
	<u>(000's)</u>	<u>(000's)</u>	<u>(000's)</u>
• Landfill Revenue (exl levy)	27,900	28,275	27,836
• Total Revenue (inc levy, forestry & power)	40,167*	40,106	38,253
• NPAT *	7,004*	7,367	8,004
• Shareholders' Funds to Total Assets	47.3%	47.7%	48.2%
• Dividends paid	7,650	7,650	5,200

**Profit was down on budget with tonnage, but total revenue was not down due to unbudgeted forestry. This generates cash but has minimal profit impact as the return is already built into the annual timber stock valuation.*

Transwaste Canterbury Financial Forecast – Year to June

	<u>June 25</u>	<u>SOI</u>	<u>June 24</u>
• Tonnage	346,091	355,000	355,048
	<u>(000's)</u>	<u>(000's)</u>	<u>(000's)</u>
• Landfill Revenue (exl levy)	55,504	56,292	53,536
• Total Revenue (inc levy)	80,898	79,979	73,949
• NPAT	13,956	14,530	14,542
• Shareholders' Funds to Total Assets	43.3%*	40.7%*	48.2%
• Dividends payable	19,650	19,900	12,050

* Reduced by impact of forecast final BRRP dividend



The steep, old and wind damaged stand of radiata on the way into Kate Valley has been harvested. It will be replanted. The landfill lies over the hill crest.

2026/28 (draft) Statement of Intent

- Attempted to rationalize and make more measurable the list of KPI's.
- Where a KPI has been dropped it doesn't mean it is no longer relevant, it will continue to be used at the management reporting level.
- Goals and performance measures grouped in the SOI as follows:
 - Environment
 - Corporate Citizenship/ Community Relations
 - Service Quality
 - Health and Safety
 - Good Employer
 - Legislation/Regulatory Compliance
 - Shareholder Interests
- The overlying aim remains to be the best, safest custodian of our communities' waste, and maintaining our social license to operate.
- The draft SOI does not contain the final financial targets – these are still being worked on. What is included is the 24/25 budget.

Milestones

- In late 2024 Kate Valley received its 6 millionth tonne of waste which is approximately half the total capacity.
- To mark this milestone and thank the staff an open day was held for employee's family and friends attracting over 400 people for site tours and events.
- In June 2025 Kate Valley will have been operating for 20 years. By then it will have:
 - Paid Dividends of (incl BRRP) \$231.6m
 - Paid Community Trust contributions of \$1.63m
 - Funded Tiromoana Bush to (excl land) \$2.75m
 - Safely placed waste totaling 6.27m tonnes



What Next?

- Kate Valley is currently consented to mid 2039 but is not likely to be full by then.
- After that, if landfills are still needed Transwaste has further options within its existing landholding.

Rough renders of Kate
Valley looking east now
(right) and the final profile
in the 2040s (below)



Alternate view of Kate
Valley looking north now
(right) and the final profile
in the 2040s (below)



Page 11

Competition

Transwaste accepts competition but will resist any erosion of environmental standards.

- Transwaste is submitting on all land fill consent applications in our region to ensure standards are maintained.
- Several consents for new facilities in the region have been lodged. Usually in old quarries the applicants already own without any selection process to find the best possible site as was done for Kate Valley.
- Frequently they state as justification that Kate Valley is running out of space. That is not the case.



Price

As stated Transwaste accepts competition. It aims for its price to be amongst the lowest for a Class 1 facility.

- Compared to other class 1 facilities that have publicly available pricing we believe that the Kate Valley disposal rate is the lowest in South Island. It is also below similar facilities in Auckland and Wellington.

Base Price \$125.15

Waste Levy \$ 60.00

Total Disposal Price \$185.15 excluding GST

- Landfills that are significantly cheaper are Class 2 and 3 facilities unable to accept the range of material received at Kate Valley.
- Such facilities have less environmental protection. They pay a much lower waste levy. They do not capture their landfill gas emissions or are required to be in the ETS, despite material such as timber in these facilities still generating landfill gas.



LFG monitoring at a well head

Sustainability - Landfill Gas

Landfill Gas (LFG) originates from the decomposition of organic matter over many years within the landfill.

- Approximately 50% of the Landfill Gas is Methane, most of the rest is CO₂
- Leakage of methane from the landfill is monitored by gas sniffing drones to detect problems early.
- 95% of expected methane generation was captured in FY24 (per MoE model).
- This avoided an equivalent emission of approximately 118,000 cars and was used to generate sufficient electricity to power over 2,000 houses.
- Gas capture saved Transwaste (and its customers) \$14m in FY24 ETS costs.
- Gas is also now being used to treat leachate onsite (reducing road trips).
- Other beneficial uses of the gas are being investigated.

Green House Gas Emissions – Key Points

- Gas Capture relies on a network of some 60 wells (so far) drawing the gas out under vacuum.
- As the methane and CO₂ generated in the landfill is biogenic, the CO₂ including that from destroying the methane is not additional. This CO₂ would have been produced anyway from natural decomposition.
- No offset is claimed for the electricity generated with no additional emissions.
- Diesel comprises just under 1/4 of the gross emissions for FY23 and FY24.
- The increase in diesel was mostly due to cell construction.
- Emissions from Transport and Landfill diesel were fully offset by carbon sequestration in TCLs own forests.

Incineration would emit all the biogenic CO₂ released in the landfill over many years on day 1. It would also release the fossil CO₂ from plastics that would otherwise remain locked up in the landfill.

Green House Gas Emissions (in tonnes CO2 equivalent)

	FY24 Audited (yet to be certified)		FY23 Certified	
Potential emission from landfill gas	100%	297,608	100%	299,398
Gas captured and destroyed	95%	<u>282,693</u>	96%	<u>287,382</u>
Direct emission	5%	14,915	4%	12,016
Transport diesel		2,471		2,454
Landfill diesel (Ops & construction)		1,598		1,486
Construction subcontractor diesel		<u>512</u>		<u>484</u>
Total Diesel		<u>4,581</u>		<u>4,424</u>
Gross Emission Footprint		19,496		16,440
Sequestration by TCL Forest		<u>-8,483</u>		<u>-6,804</u>
Net Emission		<u>11,013</u>		<u>9,636</u>

Emissions are very sensitive with respect to the Landfill Gas capture %.

Electric Truck Trial

Transwaste, via its contractor WM New Zealand is about to start a trial of an electric line haul truck as a proof of concept on selected routes

This is a challenging ask of the technology given the payloads required.

The big attraction is being able to charge the vehicle from electricity generated at Kate Valley. The landfill gas used would otherwise be flared as we do not yet have the lines capacity to export all the power we could generate.

Transwaste are continuing to evaluate other uses for the landfill Gas captured at the landfill and other sources of energy for the fleet.

Messaging - Waste Bins to website



New “skins” being trialled on the bins to help convey what more we do.

Kate Valley landfill – Major capital expenditure projects

Landfill Construction

- Cell Construction of 3B/4C (north side of landfill) and 5A underway (west side of landfill)
- 3B/4C and 5A costs some \$4m each

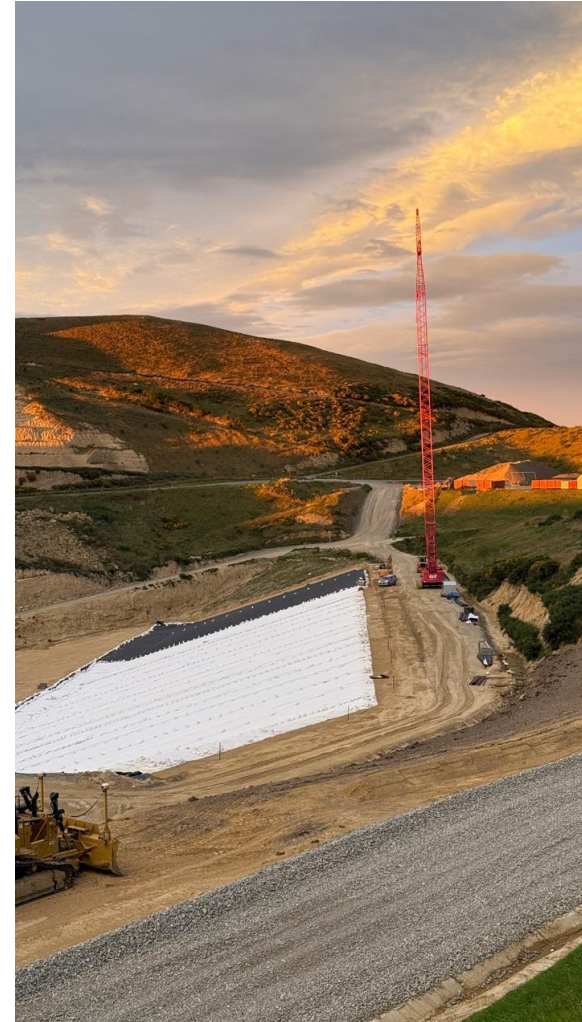
Other ongoing enabling earthworks on Southern Ridge and Mt Cedric

Other

- 2nd LFG Flare at c.\$1m
- Gareth James Energy Park workshop for c.\$0.5m (allowing servicing to be done on site)



Gas and Energy Platform with 2nd Flare and new Generator service workshop

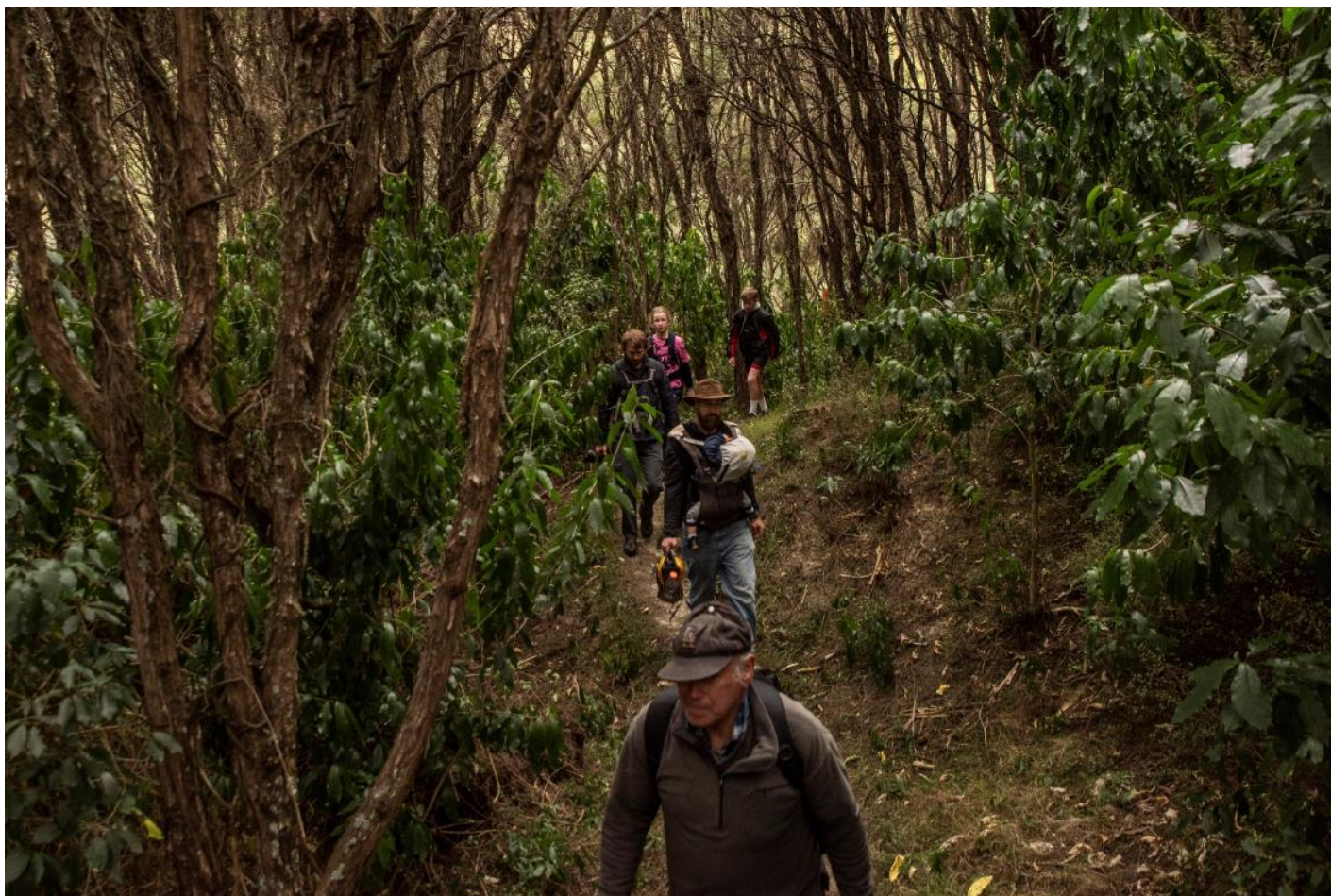


Various stages of Cell 5A construction below the Landfill office

Tiromoana Bush – 2022 - 2027 Management Plan

- Investing c.\$160k+ per annum in planting, weeding and pest control
- Total will reach c.\$2.7m by year end excluding the land value.
- Focus remains on control of deer pigs and small animals to help native flora and fauna.
- Ongoing trial of A.I. driven automated bird monitors
- Website for walkway and Tiromoana Bush
<https://transwastecanterbury.co.nz/walkways/tiromoana-bush-walkway/> Please go and have a look and walk it!

Tiromoana Bush Update



Recovering bush under story has improved the quality of the bush,
as well as plantings expanding the bush area

Tiromoana Bush Pest Control

Tiromoana Bush Pest trapping continues to yield large numbers of pests including near 600 mustelids and 200 feral cats so far.

	Oct 19 - Jun 20	Jul 20 - Jun 21	Jul 21 - Jun 22	Jul 22 - Jun 23	Jul 23 - Jun 24	Jul 24 – Jan 25	Grand Total
Weasel	139	87	70	72	65	30	463
Stoat	29	26	15	18	12	5	105
Ferret	6	9	3	3	3	1	25
Feral cat	11	59	32	42	31	19	194
Hedgehog	114	116	105	99	111	66	611
Ship rat	66	177	170	214	205	123	955
Mouse	54	88	105	116	88	38	489
Possum	117	32	44	64	79	65	401
Deer	-	-	-	13	9	4	26
Pig	-	-	-	59	24	11	94

****This data only includes Tiromoana Bush QEII covenant area, and excludes Landfill pest control.**

Questions?

