
Waipapa Papanui-Innes-Central Community Board AGENDA

Notice of Meeting Te Pānui o te Hui:

An ordinary meeting of the Waipapa Papanui-Innes-Central Community Board will be held on:

Date: Thursday 13 March 2025
Time: 4 pm
Venue: Board Room, Papanui Service Centre,
Corner Langdons Road and Restell Street, Papanui

Membership Ngā Mema

Chairperson	Emma Norrish
Deputy Chairperson	Simon Britten
Members	Pauline Cotter
	Sunita Gautam
	Victoria Henstock
	Ali Jones
	Jake McLellan
	John Miller
	Emma Twaddell

7 March 2025

Principal Advisor

Emma Pavey
Manager Community Governance
Tel: 941 5107
emma.pavey@ccc.govt.nz

Meeting Advisor

Mark Saunders
Community Board Advisor
Tel: 941 6436
mark.saunders@ccc.govt.nz

Website: www.ccc.govt.nz

Note: The reports contained within this agenda are for consideration and should not be construed as Council policy unless and until adopted. If you require further information relating to any reports, please contact the person named on the report.

To watch the meeting live, or a recording after the meeting date, go to:

<https://www.youtube.com/@waipapapapanui-innes-centr7673/streams>

To view copies of Agendas and Minutes, go to:

<https://www.ccc.govt.nz/the-council/meetings-agendas-and-minutes/>



What is important to us?

Our Strategic Framework is a big picture view of what the Council is aiming to achieve for our community

Our focus this Council term 2022–2025

Strategic Priorities



Be an inclusive and equitable city which puts people at the centre of developing our city and district, prioritising wellbeing, accessibility and connection.



Champion Ōtautahi-Christchurch and collaborate to build our role as a leading New Zealand city.



Build trust and confidence in the Council through meaningful partnerships and communication, listening to and working with residents.

Adopted by the Council on 5 April 2023



Reduce emissions as a Council and as a city, and invest in adaptation and resilience, leading a city-wide response to climate change while protecting our indigenous biodiversity, water bodies and tree canopy.



Manage ratepayers' money wisely, delivering quality core services to the whole community and addressing the issues that are important to our residents.



Actively balance the needs of today's residents with the needs of future generations, with the aim of leaving no one behind.

Our goals for this Long Term Plan 2024–2034

Draft Community Outcomes



Collaborative and confident

Our residents have the opportunity to actively participate in community and city life, have a strong sense of belonging and identity, and feel safe.



Green and liveable

Our neighbourhoods and communities are accessible and well connected, supporting our goals to reduce emissions, build climate resilience and protect and regenerate the environment, especially our biodiversity, water bodies and tree canopy.

To be adopted by the Council as part of the Long Term Plan 2024–2034



A cultural powerhouse

Our diverse communities are supported to understand and protect their heritage, pursue their arts, cultural and sporting interests, and contribute to making our city a creative, cultural and events 'powerhouse'.



Thriving and prosperous

Our city is a great place for people, business and investment where we can all grow our potential, where enterprises are innovative and smart, and where together we raise productivity and reduce emissions.

Our intergenerational vision

A place of opportunity for all.

Open to new ideas, new people,
new investment and new ways
of doing things – a place where
anything is possible.



Ngāi Tahu has rangatiratanga over its takiwā – the Council is committed to partnering with Ngāi Tahu to achieve meaningful outcomes that benefit the whole community

- Part A Matters Requiring a Council Decision
Part B Reports for Information
Part C Decisions Under Delegation
-

TABLE OF CONTENTS NGĀ IHIRANGI

Karakia Tīmatanga	4
C 1. Apologies Ngā Whakapāha	4
B 2. Declarations of Interest Ngā Whakapuaki Aronga	4
C 3. Confirmation of Previous Minutes Te Whakaāe o te hui o mua	4
B 4. Public Forum Te Huinga Whānui	4
B 5. Deputations by Appointment Ngā Huinga Whakaritenga.....	5
B 6. Presentation of Petitions Ngā Pākikitanga	5
STAFF REPORTS	
C 7. Corner of Armagh / Barbadoes Street - Proposed Parking Restrictions - P30	13
C 8. 146 Edgeware Road - Proposed Revocation of P30 Parking Restriction.....	21
C 9. Grant an Easement for Fibre Installation, Dunedin Reserve, Redwood	27
C 10. Waipapa Papanui-Innes-Central 2024-25 Discretionary Response Fund Application - Avebury House Community Trust for Volunteer Expenses, Materials and Equipment	35
C 11. Waipapa Papanui-Innes-Central 2024-25 Discretionary Response Fund Application - St Albans Resident Association (SARA) Inc - Community Gardens Coordinator	39
C 12. Waipapa Papanui-Innes-Central Community Board Area Report - March 2025	43
B 13. Elected Members' Information Exchange Te Whakawhiti Whakaaro o Te Kāhui Amorangi.....	83
Karakia Whakamutunga	

Karakia Tīmatanga

Whakataka te hau ki te uru Whakataka te hau ki te tonga Kia mākinakina ki uta Kia mātaratara ki tai E hī ake ana te atakura He tio, he huka, he hauhūnga Tīhei Mauri Ora	Cease the winds from the west Cease the winds from the south Let the breeze blow over the land Let the breeze blow over the ocean Let the red-tipped dawn come with a sharpened air. A touch of frost, a promise of a glorious day.
--	---

1. Apologies Ngā Whakapāha

Apologies will be recorded at the meeting.

2. Declarations of Interest Ngā Whakapuaki Aronga

Members are reminded of the need to be vigilant and to stand aside from decision-making when a conflict arises between their role as an elected representative and any private or other external interest they might have.

3. Confirmation of Previous Minutes Te Whakaāe o te hui o mua

That the minutes of the Waipapa Papanui-Innes-Central Community Board meeting held on [Thursday, 13 February 2025](#) be confirmed (refer page 6).

4. Public Forum Te Huinga Whānui

A period of up to 30 minutes will be available for people to speak for up to five minutes on any issue that is not the subject of a separate hearings process.

4.1 Tiana Olney

Tiana Olney will report back on her attendance at the Outward Bound Classic Course, which the Board supported through its Youth Development Fund.

4.2 Together Diverse

Sheelagh McHaffie will speak on behalf of Together Diverse regarding their initiative.

4.3 Step Ahead Trust

Bryan Gilchrist will speak on behalf of Step Ahead Trust regarding the Trust's mahi.

4.4 We Are Richmond

Hayley Guglietta will speak on behalf of We Are Richmond regarding an update on their mahi.

5. Deputations by Appointment Ngā Huinga Whakaritenga

Deputations may be heard on a matter or matters covered by a report on this agenda and approved by the Chairperson.

Deputations will be recorded in the meeting minutes.

6. Presentation of Petitions Ngā Pākikitanga

There were no petitions received at the time the agenda was prepared.

**Waipapa
Papanui-Innes-Central Community Board
OPEN MINUTES**

Date: Thursday 13 February 2025
Time: 4.01 pm
Venue: Board Room, Papanui Service Centre,
Corner Langdons Road and Restell Street, Papanui

Present

Chairperson Emma Norrish
Deputy Chairperson Simon Britten
Members Pauline Cotter
Sunita Gautam
Victoria Henstock
Ali Jones
Jake McLellan
John Miller
Emma Twaddell

Principal Advisor

Emma Pavey
Manager Community Governance
Tel: 941 5107
emma.pavey@ccc.govt.nz

Meeting Advisor

Mark Saunders
Community Board Advisor
Tel: 941 6436
mark.saunders@ccc.govt.nz

Website: www.ccc.govt.nz

To watch meetings, live, or previous recordings, go to:

<https://www.youtube.com/@waipapapapanui-innes-centr7673/streams>

To view copies of Agendas and Minutes, go to:

<https://www.ccc.govt.nz/the-council/meetings-agendas-and-minutes/>



- Part A** Matters Requiring a Council Decision
Part B Reports for Information
Part C Decisions Under Delegation

Karakia Tīmatanga

The agenda was dealt with in the following order.

1. Apologies Ngā Whakapāha

Part C

There were no apologies received.

The meeting adjourned at 4.04pm and reconvened at 4.19pm.

2. Declarations of Interest Ngā Whakapuaki Aronga

Part B

There were no declarations of interest recorded.

3. Confirmation of Previous Minutes Te Whakaāe o te hui o mua

Part C

Community Board Resolved PCBCC/2025/00001

That the minutes of the Waipapa Papanui-Innes-Central Community Board meeting held on Thursday, 12 December 2024 be confirmed.

Pauline Cotter/Emma Twaddell

Carried

4. Public Forum Te Huinga Whānui

Part B

4.1 Viane Makalio

Viane Makalio, Event Manager for Canterbury Polyfest, spoke regarding SPACPAC Canterbury Polyfest 2025, emphasising that it is an event for all of Christchurch, and highlighting how it brings value to Christchurch by fostering cultural diversity, community engagement, and economic benefits.

Attachments

A SPACPAC Canterbury Polyfest - Presentation

4.2 Richmond Community Garden

Hayley Guglietta and Morgane Honore spoke on behalf of Richmond Community Garden regarding an update on the Riverlution Café and stage two of the plastics project.

Attachments

A Riverlution Eco Park - Presentation

- 4.3 Dave Gardner**
Dave Gardner did not speak.

- 4.4 Papanui Baptist Church**
Daniel Carter and Don Jellyman spoke on behalf of the Papanui Baptist Church regarding a proposal to plant fruit trees in Craighead Reserve.

The Board requested that staff investigate the attached proposal to plant fruit trees in Craighead Reserve with a view to considering options for the upcoming planting session.

Attachments

- A Papanui Baptist Church - Presentation
- B Craighead Food Commons Proposal

- 4.5 Shirley Village Project**
Bec Roper-Gee and Emma McGurk spoke on behalf of Shirley Village Project regarding the community response to tree removals scheduled for Emmett and Riselaw streets.

Attachments

- A Shirley Village Project - Presentation

- 4.6 Marina Wylaars**
Marina Wylaars spoke regarding the tree removals scheduled for Emmett and Riselaw streets.

5. Deputations by Appointment Ngā Huinga Whakaritenga

Part B

There were no deputations by appointment.

6. Presentation of Petitions Ngā Pākikitanga

Part B

There was no presentation of petitions.

7. Richmond CRAF - Slater Street Renewal (Shirley Road - Warden Street)

The Project Manager and Engagement Manager presented the attached slides to introduce the report.

Community Board Resolved PCBCC/2025/00002 Officer recommendations accepted without change

Part C

That the Waipapa Papanui-Innes-Central Community Board:

1. Receive the information in the Richmond CRAF - Slater Street Renewal (Shirley Road - Warden Street) report.

2. Notes that the decision in this report is assessed as low significance based on the Christchurch City Council's Significance and Engagement Policy.
3. Approves the following resolutions required for the implementation of the project, relying on its powers under the Christchurch City Council Traffic and Parking Bylaw 2017 and Part 21 of the Local Government Act 1974.
4. Approves that any previous resolutions pertaining to parking, no-stopping restrictions and traffic controls made pursuant to any bylaw to the extent that they are in conflict with resolutions 5-8 below be revoked.
5. Approves all road surface treatments, traffic controls, traffic calming devices and road markings on Slater Street, commencing at its intersection with Shirley Road, and extending to its intersection with Warden Street, as detailed on plan(s) TP361901, sheet 1, dated 06.11.2024, and attached to the agenda report as **Attachment A**.
6. Approves in accordance with the relevant sections of the Land Transport Rule: Traffic Control Devices 2004:
 - a. That a road hump, as detailed in **Attachment A** to the agenda report, be installed on Slater Street at a point approximately 9 metres north of its intersection with Warden Street.
7. Approves pursuant to Clause 7 of the Christchurch City Council Traffic and Parking Bylaw 2017, that the stopping of vehicles be prohibited at all times:
 - a. Along the east side of Slater Street, commencing at its intersection with Shirley Road and extending in a southerly direction for a distance of 30 metres;
 - b. Along the east side of Slater Street, commencing at a point 58 metres south of its intersection with Shirley Road and extending in a southerly direction for a distance of 32 metres;
 - c. Along the east side of Slater Street, commencing at a point 154 metres south of its intersection with Shirley Road and extending in a southerly direction for a distance of 21 metres;
 - d. Along the east side of Slater Street, commencing at a point 215 metres south of its intersection with Shirley Road and extending in a southerly direction for a distance of 16 metres;
 - e. Along the west side of Slater Street, commencing at its intersection with Shirley Road and extending in a southerly direction for a distance of 30 metres;
 - f. Along the west side of Slater Street, commencing at a point 58 metres south of its intersection with Shirley Road and extending in a southerly direction for a distance of 32 metres;
 - g. Along the west side of Slater Street, commencing at a point 154 metres south of its intersection with Shirley Road and extending in a southerly direction for a distance of 21 metres;
 - h. Along the west side of Slater Street, commencing at a point 215 metres south of its intersection with Shirley Road and extending in a southerly direction for a distance of 16 metres.
8. Approves that these resolutions 3-7 take effect when road markings that evidence the restrictions described in the agenda report are in place (or removed in the case of revocations).

9. Approves tree removal as detailed in **Attachment B** of the agenda report with the tree numbers listed below, noting that these will be retained if on-site assessment allows. Refer to attachments B, D and F of the agenda report for information pertaining to the tree location, tree assessments and previous discussions with the board.
- a. 41918 (Outside the Shirley Community Reserve). This tree is a Crab-apple, in poor condition and is within the encroachment zone of the overhead lines and water main;
 - b. 41917 (Outside the Shirley Community Reserve). This tree is a Crab-apple, in poor condition, is within the footpath realignment and the encroachment zone of the overhead lines and water main;
 - c. 41916 (Outside the Shirley Community Reserve). This tree is a Crab-apple, in poor condition, is within the footpath realignment and the encroachment zone of the overhead lines and water main;
 - d. 41915 (Outside the Shirley Community Reserve). This tree is a Crab-apple, in poor condition, and is within the encroachment zone of the overhead lines and water main;
 - e. 41914 (Outside # 156 Slater Street). This tree is a Crab-apple, in poor condition, is within the footpath realignment and the encroachment zone of the overhead lines and water main;
 - f. 41913 (Outside # 154 Slater Street). This tree is a Crab-apple, in poor condition, is within the footpath realignment and the encroachment zone of the overhead lines and water main;
 - g. 41912 (Outside # 152 Slater Street). This tree is a Crab-apple, in poor condition, is within the footpath realignment and the encroachment zone of the overhead lines and water main;
 - h. 41911 (Outside # 150 Slater Street). This tree is a Crab-apple, in poor condition, is within the footpath realignment and the encroachment zone of the overhead lines and water main;
 - i. 41910 (Outside # 142 Slater Street). This tree is a Crab-apple, in poor condition, is within the footpath realignment and the encroachment zone of the overhead lines and water main;
 - j. 41909 (Outside # 140 Slater Street). This tree is a Crab-apple, in poor condition, is within the footpath realignment and the encroachment zone of the overhead lines and water main;
 - k. 41908 (Outside # 138 Slater Street). This tree is a Crab-apple, in poor condition, and is within the kerb realignment and the encroachment zone of the overhead lines;
 - l. 41929 (Outside # 131 Slater Street). This tree is a Crab-apple, in poor condition, and is within the footpath realignment;
 - m. 41928 (Outside # 132 Slater Street). This tree is a Crab-apple, in poor condition, and is within the footpath realignment;
 - n. 41927 (Outside # 137 Slater Street). This tree is a Crab-apple, in poor condition, and is within the footpath realignment;
 - o. 41926 (Outside # 141 Slater Street). This tree is a Crab-apple, in poor condition, and is within the footpath realignment;
 - p. 41925 (Outside #143 Slater Street. This tree is a Crab-apple, in poor condition, and is within the footpath realignment;

- q. 41924 (Outside # 145 Slater Street). This tree is a Crab-apple, in poor condition, and is within the footpath realignment;
 - r. 41923 (Outside # 151 Slater Street). This tree is a Crab-apple, in poor condition, and is within the footpath realignment;
 - s. 41922 (Outside # 159 Slater Street). This tree is a Crab-apple, in poor condition, and impacts on the renewal of the carriageway;
 - t. 41920 (Outside # 165G Slater Street). This tree is a Crab-apple, in poor condition, and impacts on the renewal of the carriageway;
 - u. 41919 (Outside # 165H Slater Street). This tree is a Crab-apple, in poor condition, and impacts on the renewal of the carriageway.
10. Notes that staff will work with residents on the potential inclusion of additional vehicle crossings at property entrances.
- a. The exact degree of provision is dependent on formal requests being received and processed prior to the start of road construction.

Jake McLellan/Pauline Cotter

Carried

Ali Jones requested that her vote against the resolutions be recorded.

Victoria Henstock requested that her abstention from the vote be recorded.

Attachments

- A Richmond CRAF - Slater Street Renewal - Staff Presentation

8. Waipapa Papanui-Innes-Central 2024-25 Discretionary Response Fund Application - Christchurch Methodist Central Mission for Aratupu Preschool and Whānau Hub culturally responsive resources

Community Board Resolved PCBCC/2025/00003 Officer recommendations accepted without change

Part C

That the Waipapa Papanui-Innes-Central Community Board:

1. Receives the information in the Waipapa Papanui-Innes-Central 2024-25 Discretionary Response Fund Application - Christchurch Methodist Central Mission for Aratupu Preschool and Whānau Hub culturally responsive resources.
2. Notes that the decisions in this report are assessed as low significance based on the Christchurch City Council's Significance and Engagement Policy.
3. Approves a grant of \$2,178 from its 2024-25 Discretionary Response Fund to Christchurch Methodist Central Mission towards resources for Aratupu Preschool and Whānau Hub.

Emma Norrish/Simon Britten

Carried

9. Waipapa Papanui-Innes-Central Community Board Area Report - February 2025

Community Board Resolved PCBCC/2025/00004 Officer recommendations accepted without change

Part B

That the Waipapa Papanui-Innes-Central Community Board:

1. Receives the Waipapa Papanui-Innes-Central Community Board Area Report for February 2025.

Pauline Cotter/Emma Twaddell

Carried

10. Elected Members' Information Exchange Te Whakawhiti Whakaaro o Te Kāhui Amorangi

Part B

Board members exchanged information on their activities, including in relation to:

- Papanui Bush planting day and mural initiative
- Nor'West Arc Cycleway extension & wastewater works – arrangement of Isaacs hosting a residents' information session at local retirement village
- Snap Send Solve promotion and experiences.

Karakia Whakamutunga

Meeting concluded at 5.38pm.

CONFIRMED THIS 13th DAY OF MARCH 2025

EMMA NORRISH
CHAIRPERSON

7. Corner of Armagh / Barbadoes Street - Proposed Parking Restrictions - P30

Reference Te Tohutoro: 25/96695

Responsible Officer(s) Te Pou Matua: Sahan Lalpe, Traffic Engineer

Accountable ELT Member Pouwhakarae: Brent Smith, Acting General Manager City Infrastructure

1. Purpose and Origin of the Report Te Pūtake Pūrongo

- 1.1 The commercial property at 324 Barbadoes Street, Beat Street Cafe, has limited on-street parking available for patrons. There is currently one 10-minute time restricted parking space available.
- 1.2 A customer request was raised on behalf of the cafe, requesting staff to investigate increasing the short-term parking available.
- 1.3 The recommendation of that investigation is presented in this report. The proposal presented allows for at least three cars to park outside Beat Street Cafe for a period of 30 minutes.

2. Officer Recommendations Ngā Tūtohu

That the Waipapa Papanui-Innes-Central Community Board:

1. Receives the information in the Corner of Armagh / Barbadoes Street - Proposed Parking Restrictions - P30 Report.
2. Notes that the decision in this report are assessed as low significance based on the Christchurch City Council's Significance and Engagement Policy.
3. Revokes any previous resolutions pertaining to traffic controls made pursuant to any bylaw to the extent that they are in conflict with the parking or stopping restrictions described in resolutions 4 and 5 below.
4. Approves that, in accordance with Clause 7 of the Christchurch City Council Traffic and Parking Bylaw 2017, the parking of vehicles be restricted to a maximum period of 30 minutes on the north side of Armagh Street, commencing at a point four metres east of its intersection with Barbadoes Street and extending in an easterly direction for a distance of 29 metres as shown on Attachment A, plan TG150122, Issue 1, dated 24/02/2025.
5. Approves that these resolutions take effect when parking signage and/or road markings that evidence the restrictions described in this staff report are in place (or removed in the case of revocations).

3. Executive Summary Te Whakarāpopoto Matua

- 3.1 A customer request on behalf of Beat Street Cafe, which occupy 1/324 Barbadoes Street, initiated an investigation to provide more short-term parking outside the cafe.
- 3.2 This short-term parking restriction will assist the local business by providing short-term parking for servicing vehicles associated with their business, and for customers.

4. Background/Context Te Horopaki

- 4.1 Council received a customer request to investigate providing further short-term parking at this location on 1 October 2024. A site visit was conducted on 4 October 2024 and the findings were communicated to the management staff at the cafe.
- 4.2 The key findings were that it was possible to provide additional short-term parking, 2-4 spaces depending on the vehicle sizes outside the cafe. A concept was presented to the café covering the extent of the short-term parking restriction, options for time restrictions, and the duration of the time restriction. It is also proposed to mark parking ticks to assist users with parking.
- 4.3 The investigation also showed the presence of a fire hydrant, with a missing yellow circle marking, highlighting the location of the hydrant. Action was taken to remark the missing marking.
- 4.4 Searching the 'Parking Compliance Complaints Database' found two callouts to this location, which involved drivers parking over the fire hydrant and exceeding the 10-minute time limit.
- 4.5 A proposal was developed by the end October 2024, following discussions with staff at the cafe. The proposal was consulted in November 2024m which included P10 car parking.
- 4.6 The consultation plan was sent for feedback to the two businesses occupying 324 Barbadoes Street, and residents/owners of 255 Armagh Street (the neighbours of the cafe). The main points of feedback are outlined below, with more commentary provided below under Section 6.
- 4.7 The tenant of 2/324 Barbadoes Street was the only one to provide feedback within the allocated consultation period. The following feedback was provided:
"I occupy 2/324 Barbadoes Street (above Beat Street) as a tattoo studio. These parking changes won't affect me in the slightest and I think it will make it easier for patrons to come and go from the cafe as they collect their takeaway coffee on the way to work".
- 4.8 The owners of 255 Armagh Street provided feedback on 25 January 2025. The release of this report was delayed to account for this feedback. The following feedback was provided:
"...This has big implications for our tenants in 255 Armagh St - there are 5 people in residence and only 2 car parks onsite. So this will take away all their additional residential parking. Can we have an additional resident only carpark also if this is planned to go ahead - we are already struggling for space when we need tradesmen to come to our properties due to visitors to cafe and local attractions etc Would like to discuss options for the cafe and 255 going forward".
"...255 Armagh st is a problem. people often park over our drive at 255 in an effort to avoid the hydrant. there is just not enough room. Can you make that a motor bike park or yellow line it to avoid it".
- 4.9 If approved, the recommendations will be implemented within the current financial year (generally around four weeks after the contractor receives the request, but this is subject to other factors such as resourcing and prioritisation beyond Council's control).

Options Considered Ngā Kōwhiringa Whaiwhakaaro

- 4.10 The following reasonably practicable options were considered and are assessed in this report:
 - 4.10.1 Install P30 time restricted parking from 8am to 4pm as per **Attachment A**.
 - 4.10.2 Do nothing and leave the parking as unrestricted.
 - 4.10.3 Install P10 time restricted parking from 8am to 6pm, same extent as shown in **Attachment A**.

4.10.4 Install P10 time restricted parking from 8am to 6pm, same extent as shown in Attachment A. In addition, having motorcycle parking between the fire hydrant and the driveway of 255 Armagh Street.

Options Descriptions Ngā Kōwhiringa

4.11 **Preferred Option:** Install P30 time restriction from 8am to 4pm in accordance with Attachment A.

4.11.1 Option Advantages

- Addresses local business owners request to provide more short stay parking and better access to/from business premises.
- Restriction is only active from 8am to 4pm (eight hours), the space is unrestricted for the rest of the day (16 hours). The space is available for parking by the rest of the public, including the residents of the neighbouring property. This is considered a better balance in meeting the needs of the business and neighbouring residents.
- The space is available for residents to park outside of the restriction times.
- The additional time (i.e., P30 instead of P10) better reflects the needs of customers visiting the cafe.

4.11.2 Option Disadvantages

- Removes approximately two unrestricted parking spaces. This is a disadvantage to those using this unrestricted parking space as all day commuter parks.

4.12 **Alternative Option 1:** Maintain the status quo – do nothing and leave the parking spaces unrestricted.

4.12.1 Option Advantages

- Retains two unrestricted parking spaces.

4.12.2 Option Disadvantages

- Does not address local business requests to provide more short stay parking and improve access into/out of business premises.

4.13 **Alternative Option 2:** Install P10 time restriction from 8am to 6pm in accordance with Attachment A.

4.13.1 Option Advantages

- Addresses local business owners request to provide more short stay parking and better access to/from business premises.

4.13.2 Option Disadvantages

- The restriction is active for a longer period of time, (i.e., 8am to 6pm, 10 hours). The space is unavailable for people wanting to park for longer.
- Removes approximately two unrestricted parking spaces.

4.14 **Alternative Option 3:** Install P10 time restriction from 8am to 6pm within the same extent as shown in Attachment A. In addition, have a motorbike park between the fire hydrant and the driveway of 255 Armagh Street.

4.14.1 Option Advantages

- Addresses local business owners request to provide more short stay parking and better access to/from business premises.

- Addresses concerns of residents of drivers blocking the driveway of 255 Armagh Street.

4.14.2 Option Disadvantages

- The restriction is active for a longer period of time, (i.e., 8am to 6pm). The space is unavailable for longer stay parking for longer.
- There is limited demand for motorbike parking at this location, and the motorbikes/bikes are able to use the driveway of the cafe to park, under the current operating conditions of the cafe. Therefore, limiting the legal parking of vehicles over the fire hydrant with a parking restriction that will likely be under-utilised.
- Removes approximately two unrestricted parking spaces.

5. Financial Implications Ngā Hīraunga Rauemi

Capex/Opex Ngā Utu Whakahaere

	Recommended Option	Option 2 - Do nothing
Cost to Implement	\$2,000 to write report including consultation and site visit.	\$2000 to write report in including consultation and site visits
Cost to implement	\$1,000 to install new signs with line marking	\$0
Maintenance/Ongoing Costs	Will be added to and covered by the area maintenance contract	\$0
Funding Source	Traffic Operations Team's 'Road Marking and Signs' budget.	n/a

6. Considerations Ngā Whai Whakaaro

Risks and Mitigations Ngā Mōrearea me ngā Whakamātautau

6.1 Non identified.

Legal Considerations Ngā Hīraunga ā-Ture

6.2 Statutory and/or delegated authority to undertake proposals in the report:

6.2.1 Part 1, Clause 7 of the Christchurch City Council Traffic and Parking Bylaw 2017 provides Council with the authority to install parking or stopping restrictions by resolution.

The Community Boards have delegated authority from the Council to exercise the delegations as set out in the Delegations Register. The list of delegations for the Community Boards includes the resolution of stopping and traffic control devices.

6.2.2 The installation of any signs and/or markings associated with traffic control devices must comply with the Land Transport Rule: Traffic Control Devices 2004.

6.3 Other Legal Implications:

6.3.1 There is no other legal context, issue, or implication relevant to this decision.

6.3.2 This specific report has not been reviewed and approved by the Legal Services Unit however the report has been written using a general approach previously approved of by the Legal Services Unit, and the recommendations are consistent with the policy and legislative framework outlined in this report.

Strategy and Policy Considerations Te Whai Kaupapa here

6.4 The required decision:

- 6.4.1 Align with the [Christchurch City Council's Strategic Framework](#).
- 6.4.2 The recommendations in this report are consistent with the Central City Parking Policy
- 6.4.3 The decisions in this report are assessed as low significance based on the Christchurch City Council's Significance and Engagement Policy. The level of significance was determined by the low level of impact and low number of people affected by the recommended decision.
- 6.5 The community engagement and consultation outlined in this report reflect the assessment.
- 6.6 This report supports the [Council's Long Term Plan \(2024 - 2034\)](#):
- 6.7 Transport
 - 6.7.1 Activity: Transport
 - Level of Service: 10.3.3 Maintain customer satisfaction with the ease of use of Council on-street parking facilities - >=50%

Community Impacts and Views Ngā Mariu ā-Hāpori

- 6.8 Affected property owners and residents were advised of the recommended option by a letter being delivered.
- 6.9 Letters were sent to two properties (tenants and owners), 324 Barbadoes Street and 255 Armagh Street.
- 6.10 Feedback was received from 2/324 Barbadoes Street, a business tenant occupying the same building as the cafe. The feedback was supportive of the proposed plan.
- 6.11 The feedback from the property owners of 255 Armagh Street was not supportive of the consulted plan (i.e., Alternative Option 2 above), feedback outlined under Section 4.8 was considered and the plan was changed to what is proposed in this report.
- 6.12 The consulted plan was **Alternative Option 2** above. Based on the feedback from property owners of 255 Armagh Street, **Alternative Option 3** was considered. Option 3 was consulted with the cafe owner, who provided feedback on the motorcycle parking, and the 30-minute restriction better aligning with the needs of the cafe customers. The **Preferred Option** is the result of considering the feedback from the property owners of 255 Armagh Street.
- 6.13 The Team Leader Parking Compliance supports the preferred option.

Impact on Mana Whenua Ngā Whai Take Mana Whenua

- 6.14 The decision does not involve a significant decision concerning ancestral land or a body of water or other elements of intrinsic value, therefore this decision does not specifically impact Mana Whenua, their culture and traditions.
- 6.15 The decision does not involve a matter of interest to Mana Whenua and will not impact on our agreed partnership priorities with Ngā Papatipu Rūnanga.

Climate Change Impact Considerations Ngā Whai Whakaaro mā te Āhuarangi

- 6.16 The decisions in this report are likely to:
 - 6.16.1 Contribute positively to adaptation to the impacts of climate change.
 - 6.16.2 Contribute positively to emissions reductions.
- 6.17 The short-term parking in this area will prevent long-term commuter parking occupying this area and encourage drivers to park at paid car parks or choose alternative travel models. Customers attempting to go to the businesses at 324 Barbadoes Street have a better chance of



finding a short-term car park, and do not have to drive around the neighbourhood looking for a free car parking space.

- 6.18 Ultimately, the proposals in this report are unlikely to contribute significantly to adaptation to the impacts of climate change or emissions reductions.

7. Next Steps Ngā Mahinga ā-muri

- 7.1 If approved, staff will arrange for the new road marking and signs to be installed.

Attachments Ngā Tāpirihanga

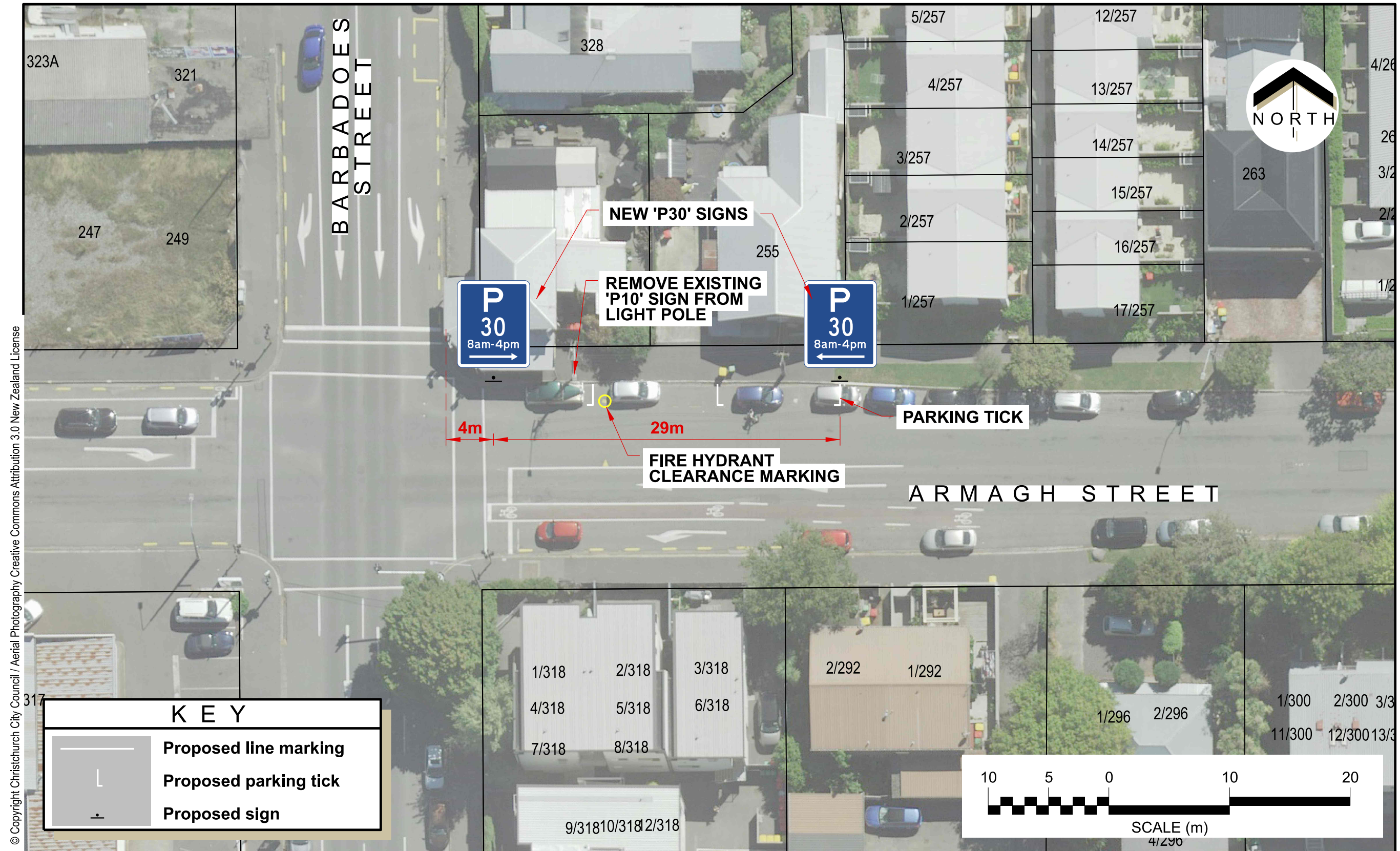
No.	Title	Reference	Page
A  	Corner of Armagh / Barbadoes Street - Proposed Parking Restriction - P30	25/357711	19

In addition to the attached documents, the following background information is available:

Document Name - Location / File Link
Not applicable

Signatories Ngā Kaiwaitohu

Author	Sahan Lalpe - Traffic Engineer
Approved By	Gemma Dioni - Acting Team Leader Traffic Operations/Principal Advisor Stephen Wright - Manager Operations (Transport)



Corner of Armagh / Barbadoes Street
Proposed Parking Restrictions - P30
For Board Approval

Original Plan Size: A4
Drawn: GA Issue 1 24/02/2025
Designed: SL Drawing: TG150122
Approved: GD Project: RPS845

8. 146 Edgware Road - Proposed Revocation of P30 Parking Restriction

Reference Te Tohutoro: 25/282898

Responsible Officer(s) Te Pou Matua: Sally-Ann Marshall, Traffic Engineer

Accountable ELT Member Pouwhakarae: Brent Smith, Acting General Manager City Infrastructure

1. Purpose and Origin of the Report Te Pūtake Pūrongo

- 1.1 For the Waipapa Papanui-Innes-Central Community Board to approve the proposed revocation of existing parking restrictions adjacent to 146 Edgware Road.
- 1.2 This report has been written in response to a request from the property owner of 146 Edgware Road. This was previously a commercial property, however, it is now being developed into residential dwellings, which would benefit from unrestricted parking.
- 1.3 The Preferred Option is for the existing P30 time restricted parking spaces adjacent to 146 Edgware Road to be revoked as shown on **Attachment A**.

2. Officer Recommendations Ngā Tūtohu

That the Waipapa Papanui-Innes-Central Community Board:

1. Receives the information in the 146 Edgware Road - Proposed Revocation of P30 Parking Restriction Report.
2. Notes that the decision in this report is assessed as low significance based on the Christchurch City Council's Significance and Engagement Policy.
3. Approves that any previously approved resolutions be revoked, in accordance with Clause 6 (2) of the Christchurch City Council Traffic & Parking Bylaw 2017, on the south side of Edgware Road, commencing at the intersection with Madras Street and extending in a westerly direction for a distance of 20 metres as shown on plan 146 Edgware, Issue 2, dated 25 February 2025, refer **Attachment A**.
4. Approves that, in accordance with Clause 7 of the Christchurch City Council Traffic and Parking Bylaw 2017, the stopping of all vehicles be prohibited at all times on the south side of Edgware Road commencing at its intersection with Madras Street, and extending in a westerly direction for a distance of nine metres as shown on plan 146 Edgware, Issue 2, dated 25 February 2025, refer **Attachment A**.
5. Approves that these resolutions take effect when parking signage and/or road markings that evidence the restrictions described in this staff report are in place (or removed in the case of revocations).

3. Executive Summary Te Whakarāpopoto Matua

- 3.1 Staff received a request to have the existing P30 parking restriction adjacent to 146 Edgware Road revoked.
- 3.2 The request complies with Councils Suburban Parking Policy requirements.

- 3.3 There are no other commercial businesses in the immediate vicinity and parking demands are low.
- 3.4 We received no response to our consultation on the proposal from neighbouring property owners and residents.

4. Background/Context Te Horopaki

- 4.1 The property owner has requested that the existing P30 parking adjacent to 146 Edgeware Road be revoked. This was previously a commercial property, however is now being developed into residential dwellings which would benefit from these being unrestricted parking spaces.
- 4.2 Council staff have observed on two site visits that the parking spaces were not in use. The property owner has also confirmed that for most of the time these spaces are unoccupied.
- 4.3 Parking demands in the area are low and do not meet the minimum criteria in Councils Suburban Parking Policy for timed parking restrictions.
- 4.4 We have consulted with the property owners and residents who are affected by this change, refer Section 6.7.
- 4.5 If approved, the parking changes will be implemented in this financial year (generally around four weeks after the contractor receives the request, but this is subject to other factors such as resourcing and prioritisation beyond Council's control).

Options Considered Ngā Kōwhiringa Whaiwhakaaro

- 4.6 The following reasonably practicable options have been considered and are assessed in this report:
 - 4.6.1 Revoke the two existing P30 time restricted spaces.
 - 4.6.2 Maintain the status quo – do nothing.

Options Descriptions Ngā Kōwhiringa

- 4.7 **Preferred Option:** Revoke the two existing P30 time restricted spaces.
 - 4.7.1 **Option Advantages**
 - Provides two unrestricted parking spaces adjacent to the new residential development.
 - Aligns with the requirements of the Suburban Parking Policy.
 - Addresses property owners request to review parking restrictions.
 - 4.7.2 **Option Disadvantages**
 - Cost to remove signage.
- 4.8 Maintain the status quo – do nothing:
 - 4.8.1 **Option Advantages**
 - No removal costs.
 - 4.8.2 **Option Disadvantages**
 - Does not provide more unrestricted parking spaces for new residential development.

- Does not align with the Suburban Parking Policy.
- Does not address property owner request to review parking restrictions.

5. Financial Implications Ngā Hīraunga Rauemi Capex/Opex Ngā Utu Whakahaere

Capex/Opex Ngā Utu Whakahaere

	Preferred Option	Option 2 – Do nothing
Cost to investigate	\$1,500 to write report including consultation and two site visits	\$1,500 to write report including consultation and two site visits
Cost to Implement	\$200 to remove existing signage	\$0
Maintenance/Ongoing Costs	Will be added to and covered by the area maintenance contract	\$0
Funding Source	Traffic Operations Team traffic signs and markings budget	\$0

6. Considerations Ngā Whai Whakaaro

Risks and Mitigations Ngā Mōrearea me ngā Whakamātautau

6.1 None identified.

Legal Considerations Ngā Hīraunga ā-Ture

6.2 Statutory and/or delegated authority to undertake proposals in the report:

6.2.1 Part 1, Clause 7 of the Christchurch City Council Traffic and Parking Bylaw 2017 provides Council with the authority to install parking or stopping restrictions by resolution.

6.2.2 The Committee has delegated authority from the Council to exercise the delegations as set out in Part D of the Register of Delegations. The Committee has delegated authority to approve parking and stopping restrictions within the area described as Plan A of the Register of Delegations.

6.2.3 The installation of any signs and/or markings associated with traffic control devices must comply with the Land Transport Rule: Traffic Control Devices 2004.

6.3 Other Legal Implications:

6.3.1 There is no other legal context, issue, or implication relevant to this decision.

6.3.2 This specific report has not been reviewed and approved by the Legal Services Unit however the report has been written using a general approach previously approved of by the Legal Services Unit, and the recommendations are consistent with the policy and legislative framework outlined in this report.

Strategy and Policy Considerations Te Whai Kaupapa here

6.4 The required decisions:

6.4.1 Align with the [Christchurch City Council's Strategic Framework](#).

6.4.2 The recommendations in this report are consistent with the Suburban Parking Policy.

6.4.3 The decisions in this report are assessed as low significance based on the Christchurch City Council's Significance and Engagement Policy. The level of significance was determined by the low level of impact and low number of people affected by the recommended decision.

- 6.4.4 The community engagement and consultation outlined in this report reflect the assessment.
- 6.5 This report supports the [Council's Long Term Plan \(2024 - 2034\)](#):
- 6.6 Transport
 - 6.6.1 Activity: Transport
 - Level of Service: 10.3.3 Maintain customer satisfaction with the ease of use of Council on-street parking facilities - >=50%

Community Impacts and Views Ngā Mariu ā-Hāpori

- 6.7 Consultation documentation was posted to the property owners and residents of the adjacent and opposite properties. No feedback has been received yet, but any feedback received before the Community Board meeting will be tabled at the meeting.
- 6.8 The Team Leader Parking Compliance supports the preferred option.
- 6.9 The decision affects the following wards/Community Board areas:
 - 6.9.1 Waipapa Papanui-Innes-Central.

Impact on Mana Whenua Ngā Whai Take Mana Whenua

- 6.10 The decision does not involve a significant decision concerning ancestral land or a body of water or other elements of intrinsic value, therefore this decision does not specifically impact Mana Whenua, their culture and traditions.
- 6.11 The decision does not involve a matter of interest to Mana Whenua and will not impact on our agreed partnership priorities with Ngā Papatipu Rūnanga.


Climate Change Impact Considerations Ngā Whai Whakaaro mā te Āhuarangi

- 6.12 The proposals in this report do not contribute significantly to adaptation to the impacts of climate change or emissions reductions.

7. Next Steps Ngā Mahinga ā-muri

- 7.1 If approved, staff will arrange for the existing P30 signage to be removed.

Attachments Ngā Tāpirihanga

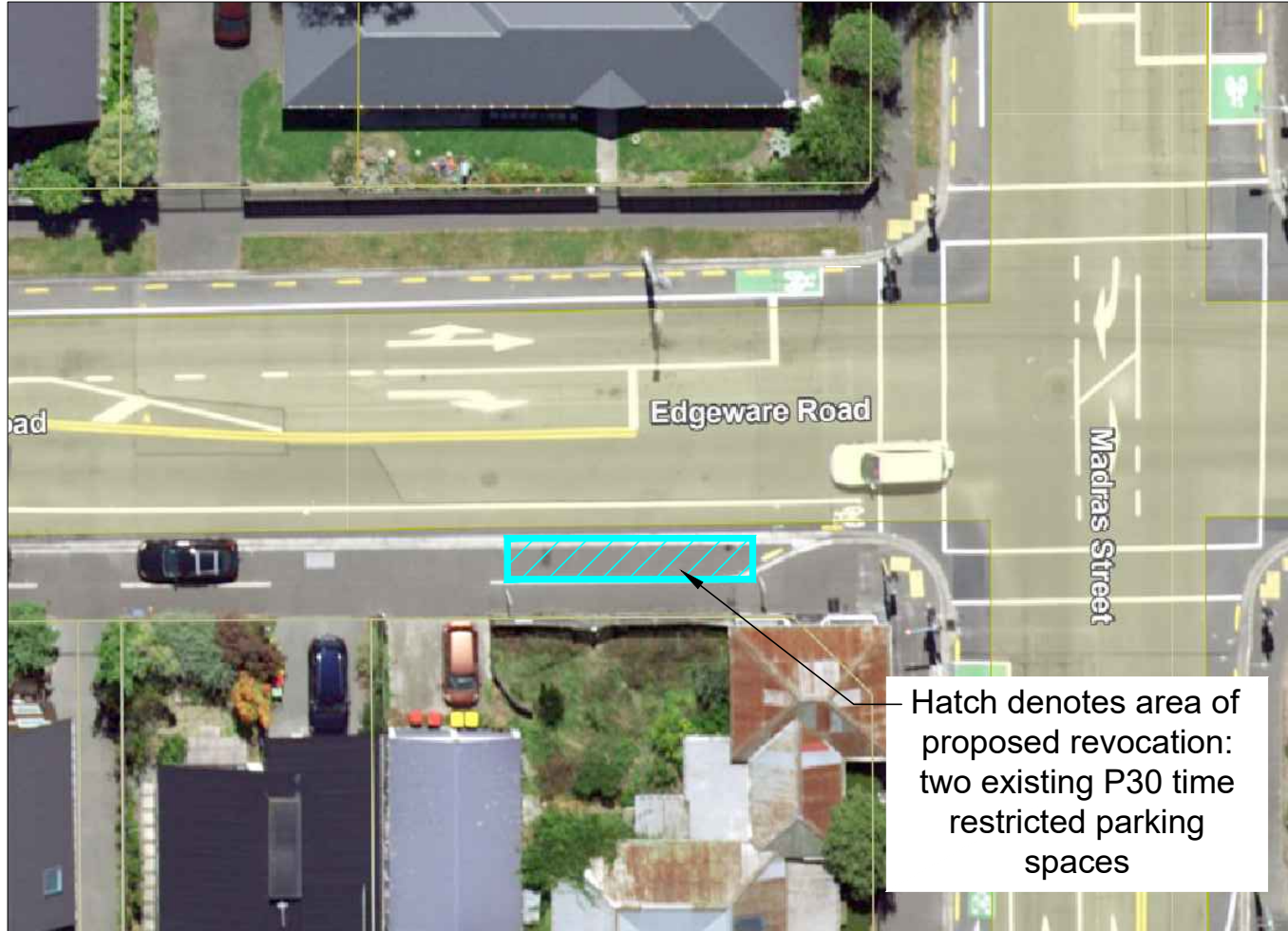
No.	Title	Reference	Page
A 	Attachment A - #146 Edgware Road, Proposed P30 Time Restricted Parking Space Revocation	25/368055	26

In addition to the attached documents, the following background information is available:

Document Name – Location / File Link
Not applicable

Signatories Ngā Kaiwaitohu

Author	Sally-Ann Marshall - Traffic Engineer
Approved By	Gemma Dioni - Acting Team Leader Traffic Operations/Principal Advisor Stephen Wright - Manager Operations (Transport)



9. Grant an Easement for Fibre Installation, Dunedin Reserve, Redwood

Reference Te Tohutoro: 25/164341

Responsible Officer(s) Te Pou Matua: Elizabeth Hoskins – Property Consultant

Accountable ELT Member Pouwhakarae: Andrew Rutledge, Acting General Manager Citizens and Community

1. Purpose and Origin of the Report Te Pūtake Pūrongo

- 1.1 The purpose of this report is to request the Community Board to exercise its delegation to approve an easement over land governed under Section 48(1) of the Reserves Act 1977.
- 1.2 The easement will be for Enable Networks Limited, to provide fibre across Dunedin Reserve to the Redwood Playcentre located part way through the reserve.
- 1.3 The decision in this report is of low significance in relation to the Christchurch City Council's Significance and Engagement Policy. The level of significance was determined by considering the easement over the reserve will allow continued internet connectivity to the Lessee when copper is no longer available for use and is below ground.
- 1.4 The Community Board holds the delegation to grant easements over reserve land pursuant to the Reserves Act 1977, subject to consent from the Minister of Conservation (delegated to the Council Chief Executive)

2. Officer Recommendations Ngā Tūtohu

That the Waipapa Papanui-Innes-Central Community Board:

1. Receives the information in the Grant an Easement for Fibre Installation, Dunedin Reserve, Redwood Report.
2. Notes that the decision in this report is assessed as low significance based on the Christchurch City Council's Significance and Engagement Policy.
3. Approves the installation of a fibre cable and subsequent granting of an easement in favour of Enable Networks Limited to convey utilities within the land described as Reserve 4912 comprising 1.0345ha and vested as Recreation Reserve by Gazette 1957 p2327.
4. Notes that approval is subject to Section 48(1) of the Reserves Act 1977 and is subject to the Minister of Conservation consent to the easement, as delegated to the Council Chief Executive under the Instrument of delegation for Territorial Authorities dated 12 June 2013. The Community Board approve the Chief Executive exercising their delegation in this regard.
5. Delegates authority to the Manager Property Consultancy to conclude negotiations and sign the easement document.

3. Executive Summary Te Whakarāpopoto Matua

- 3.1 Staff recommend granting the easement for services required to provide fibre across the Dunedin Street Reserve recreation reserve to the Lessee, Redwood Playcentre.

- 3.2 The proposed location of the fibre will be from the street and beside an existing concrete path and into the proposed lease area of the Lessee to the building behind.
- 3.3 Other options for internet connectivity to the Playcentre were investigated and fibre was the preferred option to provide a reliable internet service for the business to operate efficiently.
- 3.4 This installation and easement will have minimal impact on the public and will not affect access to the reserve.
- 3.5 The city arborist has confirmed there will be no impact to the existing trees as the trench will go through existing driveway and if near any existing roots the cable trench will be hand dug.

Aerial View of Dunedin Reserve.



Proposed cable route in red



Dunedin Street this end



Cable will be mainly through the lease plan for the Playcentre, outlined in yellow

4. Background/Context Te Horopaki

- 4.1 Dunedin Reserve is a Recreation Reserve being Reserve 4912 comprising 1.0345ha. The land was vested as Recreation Reserve in Gazette Notice 1957 p2327.
- 4.2 The Redwood Playcentre is a 'not for profit' entity and has been in Dunedin Reserve since 1976.
- 4.3 The Playcentre is currently on a lease in holdover on the reserve and own the building and other improvements on the land surrounding the building and play area. Their business requires reliable and robust internet activity to function effectively.
- 4.4 Copper will be decommissioned, and a wireless network will not provide the acceptable level of connectivity for this business, hence the need for fibre to be installed to their building.
- 4.5 Access for the cable is from the street and through the recreation reserve to the building located halfway through the site. The process under section 48(1) of the Reserves Act 1977 is required to allow this fibre installation by way of an easement.
- 4.6 There is an expectation that Lessees on the reserve which are community groups or 'not for profit' entities will have the ability to be provided with utilities that support the functionality of that entity.
- 4.7 The aerial image above shows the location of the reserve and clearly shows the Playcentre building.
- 4.8 The following related memos/information were circulated to the meeting members:

Date	Subject
	N/A

- 4.9 The following related information session/workshops have taken place for the members of the meeting:

Date	Subject
	N/A

Options Considered Ngā Kōwhiringa Whaiwhakaaro

- 4.10 The following reasonably practicable options were considered and are assessed in this report:
 - Granting an easement to allow a fibre connection to the Playcentre is the only reasonable and practical option.
- 4.11 The following options were considered but ruled out:
 - Do not grant an easement and request the Playcentre use other options for internet connectivity. Other options would not provide sufficient capability for the efficient use as an internet connection or be as cost effective as the fibre option.

Options Descriptions Ngā Kōwhiringa

- 4.12 **Preferred Option: Grant an easement to allow fibre installation.**

4.12.1 Option Description: Grant an Easement to allow fibre installation.

4.12.2 Option Advantages

- This will allow a robust and reliable internet connection needed for the business to operate effectively.

4.12.3 **Option Disadvantages**

- There are no disadvantages with this option.

4.13 **Do not grant an easement for fibre.**

4.13.1 **Option Description: Do not grant an easement for fibre.**

4.13.2 **Option Advantages**

- There are no advantages with this option.

4.13.3 **Option Disadvantages**

- Other options for internet connectivity would be an inferior service and not practical in this situation.

Analysis Criteria Ngā Paearu Wetekina

- 4.14 Installation of fibre to the building through the reserve was the most practical, reasonable and cost-effective option.

5. Financial Implications Ngā Hīraunga Rauemi

Capex/Opex Ngā Utu Whakahaere

	Recommended Option	Option 2 - <enter text>	Option 3 - <enter text>
Cost to Implement	Staff time only. All other costs to be met by the applicant		
Maintenance/Ongoing Costs	Nil		
Funding Source	Staff budgets		
Funding Availability	Staff budgets		
Impact on Rates	Nil		

6. Considerations Ngā Whai Whakaaro

Risks and Mitigations Ngā Mōrearea me ngā Whakamātautau

- 6.1 There are no risks in granting this easement to Enable Networks Limited. The utility will be managed under a business-as-usual approach by the operators and any access to install or maintain will require notification to the Council. The Council will be indemnified for any damage to the cable or conduit.
- 6.2 Should the Council need the cable to be relocated in the future this will be at the cost of Enable Networks Limited.

Legal Considerations Ngā Hīraunga ā-Ture

- 6.3 Statutory and/or delegated authority to undertake proposals in the report:
- 6.3.1 Section 48(1) of the Reserves Act 1977 states that the administering body of a reserve may grant easements over any part of the reserve.
- 6.3.2 Section 48(2) of the Reserves Act 1977 stipulates the administering body of a reserve must give public notice to the proposal to grant an easement, however s48(3) of the Act provides that subsection (2) will not apply in circumstances where the reserve is not likely to be materially amended or damaged and the rights of the public are not permanently affected. Section 48(3) applies in this case.

- 6.3.3 The Council in the Delegations register has given authority to recommend granting easements on reserves to the Community Board subject to the Minister of Conservation approval (which is delegated to Council Chief Executive).
- 6.4 Other Legal Implications:
- 6.4.1 There is no legal context, issue, or implication relevant to this decision and Council's legal team had drafted the documentation.

Strategy and Policy Considerations Te Whai Kaupapa here

- 6.5 The required decision
- 6.5.1 Aligns with the Framework. The decision to grant this easement to Enable Networks Limited is consistent with Council's Plans and Policies.
- 6.5.2 Is assessed as low significance based on the Christchurch City Council's Significance and Engagement Policy. The level of significance was determined by there being no impact to park users or access to the Park and the cable will be underground.
- 6.5.3 Is consistent with Council's Plans and Policies.
- 6.6 This report supports the [Council's Long Term Plan \(2024 - 2034\)](#):
- 6.7 Parks, Heritage and Coastal Environment
- 6.7.1 Activity: Parks and Foreshore
- Level of Service: 6.8.10.1 Appropriate use and occupation of parks is facilitated - Processing of the application is started within ten working days of receiving application – 95%

Community Impacts and Views Ngā Mariu ā-Hāpori

- 6.8 Under Section 48(3) of the Reserves Act a public notice and any subsequent submissions was not required where the reserve is not likely to be materially amended or damaged and the rights of the public are not permanently affected. There will be no restriction regarding access or use of the Reserve by the public.
- 6.9 The decision affects the following wards/Community Board areas:
- 6.9.1 Waipapa Papanui-Innes-Central Community Board.
- 6.10 The Community Board view has not been tabled prior to this report.

Impact on Mana Whenua Ngā Whai Take Mana Whenua

- 6.11 The decision does not involve a significant decision in relation to ancestral land, a body of water or other elements of intrinsic value, therefore this decision to grant this easement, does not specifically impact Mana Whenua, their culture, and traditions.
- 6.12 The decision does not involve a matter of interest to Mana Whenua and will not impact on our agreed partnership priorities with Ngā Papatipu Rūnanga.
- 6.13 This decision does not impact on Mana whenua as the location is not a site of significance nor does the granting of an easement impact on any culture or values.

Climate Change Impact Considerations Ngā Whai Whakaaro mā te Āhuarangi

- 6.14 The proposals in this report are unlikely to contribute significantly to adaptation to the impacts of climate change or emissions reductions.
- 6.15 The granting of an easement is to allow the installation of a utility on Council owned land.

7. Next Steps Ngā Mahinga ā-muri

- 7.1 Following the recommendation to grant this easement, we will seek Minister of Conservation approval then complete the documentation and processes required, prior to any works commencing on the reserve.

Attachments Ngā Tāpirihanga

There are no attachments for this report.

In addition to the attached documents, the following background information is available:

Document Name – Location / File Link
Not applicable

Signatories Ngā Kaiwaitohu

Author	Elizabeth Hoskins - Property Consultant
Approved By	Angus Smith - Manager Property Consultancy Kelly Hansen - Manager Parks Planning & Asset Management Rupert Bool - Acting Head of Parks

10. Waipapa Papanui-Innes-Central 2024-25 Discretionary Response Fund Application - Avebury House Community Trust for Volunteer Expenses, Materials and Equipment

Reference Te Tohutoro: 25/258817

Responsible Officer(s) Te Trevor Cattermole Community Development Advisor

Pou Matua: Trevor.Cattermole@ccc.govt.nz

Accountable ELT

Member Pouwhakarae: Andrew Rutledge, Acting General Manager Citizens and Community

1. Purpose and Origin of the Report Te Pūtake Pūrongo

- 1.1 The purpose of this report is for the Waipapa Papanui-Innes-Central Community Board to consider an application for funding from its 2024-25 Discretionary Response Fund from the organisation listed below.

Funding Request Number	Organisation	Project Name	Amount Requested	Amount Recommended
00068551	Avebury House Community Trust	Volunteer Expenses, Materials and Equipment	\$10,695	\$8,000

- 1.2 There is currently a balance of \$34,222 remaining in the fund.

2. Officer Recommendations Ngā Tūtohu

That the Waipapa Papanui-Innes-Central Community Board:

1. Receives the information in the Waipapa Papanui-Innes-Central 2024-25 Discretionary Response Fund Application - Avebury House Community Trust for Volunteer Expenses, Materials and Equipment Report.
2. Notes that the decisions in this report are assessed as low significance based on the Christchurch City Council's Significance and Engagement Policy.
3. Approves a grant of \$8,000 from its 2024-25 Discretionary Response Fund to Avebury House Community Trust towards the Volunteer Expenses, Materials and Equipment.

3. Key Points Ngā Take Matua

Strategic Alignment Te Rautaki Tīaroaro

- 3.1 The recommendations above are aligned with the Council's Strategic Framework and in particular the strategic priority of being an Inclusive and equitable city which puts people at the centre of developing our city and district, prioritising wellbeing, accessibility and connection. The project also aligns with the Strengthening Communities Together Strategy.
- 3.2 The recommendations are consistent with the Strengthening Communities Together Strategy.

Decision Making Authority Te Mana Whakatau

- 3.3 The Community Board has the delegated authority to determine the allocation of the Discretionary Response Fund for each community.
- 3.3.1 Allocations must be consistent with any Council-adopted policies, standards or criteria.
- 3.3.2 The Fund does not cover:
- Legal or environmental court challenges against the Council, Council Controlled Organisations, or Community Board decisions.
 - Projects or initiatives that change the scope of a Council project or lead to ongoing operational costs to the Council (though Community Boards can recommend to the Council that it consider a grant for this purpose).

Assessment of Significance and Engagement Te Aromatawai Whakahirahira

- 3.4 The decisions in this report are assessed as low significance based on the Christchurch City Council’s Significance and Engagement Policy.
- 3.5 The significance level was determined by the number of people affected and/or with an interest.
- 3.6 Due to the assessment of low significance, no further community engagement and consultation is required.


Discussion Kōrerorero

3.7 At the time of writing, the balance of the 2024-25 Discretionary Response Fund is:

Total Budget 2024/25	Granted To Date	Available for allocation	Balance If Staff Recommendation adopted
\$111,628	\$77,406	\$34,222	\$26,222

- 3.8 Based on the current Discretionary Response Fund criteria, the application above is eligible for funding.
- 3.9 The attached Decision Matrix provides detailed information for the application. This includes organisational details, project details, financial information, and a staff assessment.

Attachments Ngā Tāpirihanga

No.	Title	Reference	Page
A 	Decision Matrix - Avebury House	25/320093	37

Signatories Ngā Kaiwaitohu

Author	Trevor Cattermole - Community Development Advisor
Approved By	Emma Pavey - Manager Community Governance, Papanui-Innes-Central

2024/25 DRF PAPANUI-INNES-CENTRAL DECISION MATRIX

Priority Rating

One	Meets all eligibility criteria and contributes significantly to Funding Outcomes and Priorities. Highly recommended for funding.
Two	Meets all eligibility criteria and contributes to Funding Outcomes and Priorities. Recommended for funding.
Three	Meets all eligibility criteria and contributes to Funding Outcomes and Priorities but to a lesser extent than Priority 2 applications. Not recommended for funding.
Four	Meets all eligibility criteria and has minimum contribution to Funding Outcomes and Priorities / Insufficient information provided by applicant (in application and after request from Advisor) / Other funding sources more appropriate. Not recommended for funding.

00068551	Organisation Name Avebury House Community Trust	Name and Description Volunteer Expenses, Materials & Equipment (Split CBL 25% / PIC 75%) The Trust is seeking funding to support the work of the volunteers within the house and externally supporting the growing number of events held on site, materials for the HUGS Quilters group, newsletter costs and the purchase of replacement chairs and a vacuum cleaner.	Funding History 2024/25 - \$40,000 (Avebury House Y1 of 2) SCF PIC 2023/24 - \$40,000 (Avebury House Y3 of 3) SCF PIC 2022/23 - \$40,000 (Avebury House Y2 of 3) SCF LCH 2021/22 - \$37,000 (Avebury House Y1 of 3) SCF LCH 2021/22 - \$5,000 (Matariki in the Zone) Events & Festivals Sponsorship Fund. Other Sources of Funding John Ilot Trust - \$1,000 (Hugs Quilters) - Confirmed Sponsorship - \$1,365 (Advertisers) - Confirmed Funds on hand - \$4,458 - Confirmed	Request Budget Total Cost \$17,618 Requested Amount \$10,695 61% percentage requested Contribution Sought Towards: Chairs and Vacuum cleaner - \$1,900 HUGS Quilters (Backing material) - \$3,000 Contribution to yearly newsletter costs - \$3,195 Volunteer expenses - \$2,600	Staff Recommendation \$ 8,000 That the Waipapa Papanui-Innes-Central Community Board approves a grant of \$8,000 from its 2024-25 Discretionary Response Fund to Avebury House Community Trust for Volunteer Expenses, Materials & Equipment.	2
-----------------	---	--	---	---	---	----------

<p>Organisation Details:</p> <p>Service Base: 9 Eveleyn Couzins Ave, Richmond</p> <p>Legal Status: Charitable Trust</p> <p>Established: 18/09/2002</p> <p>Staff – Paid: 8</p> <p>Volunteers: 80</p> <p>Annual Volunteer Hours: 5,000</p> <p>Participants: 4,000</p> <p>Target Groups: Community Development</p> <p>Networks: Richmond Community Action Network, ACE Aotearoa, Vol Can, Riverlution.</p> <p>Organisation Description/Objectives:</p> <p>Avebury House was established to be a community hub for Richmond. A place for gathering, learning, creating - to foster social connection and community wellbeing. As a Heritage 2 listed building, Avebury House is also representative of and a repository for local history.</p>	<p>Alignment with Council Strategies and Policies</p> <ul style="list-style-type: none"> Strengthening Communities Together Strategy <p>Alignment with Council Funding Outcomes</p> <ul style="list-style-type: none"> Support, develop and promote capacity Community participation and awareness Increase community engagement Enhance community and neighbourhood safety Provide community-based programmes Reduce or overcome barriers Foster collaborative responses <p>Outcomes that will be achieved through this project</p> <p>Volunteers feel appreciated and their commitment and Mahi is recognised and rewarded.</p> <p>Avebury House will have a full complement of chairs and equipment to keep the house clean and tidy.</p> <p>Volunteers will focus on making sure events are as waste-free as possible.</p> <p>The newsletter will continue to be printed and delivered by volunteers.</p> <p>A high standard of cleanliness is maintained in the house.</p> <p>HUGs volunteers will provide upwards of 160 handmade quilts to underprivileged children.</p> <p>How Will Participants Be Better Off?</p> <p>All users of the house will benefit from the increased amenity of more chairs and keeping the house clean. The newsletter is key outreach for over 2,000 local homes and around 500 online subscribers - keeping folk up to date, including those who do not use or have access to the internet. Attendees of events are assured their day out is not at the expense of a large landfill footprint via the clean-up work of volunteers and the house waste management system. The HUGs volunteers are not only giving their time but are creating quilts that will provide comfort for dozens of young families in need all over Christchurch. Volunteers themselves will feel appreciated and know they are giving their time and energy to an organisation that values them.</p>	<p>Staff Assessment</p> <p>Established in 2002, The Avebury House Community Trust (The Trust) operates out of the Council owned Avebury House (1885) located on Avebury Park in Richmond. The Trust provides a place where local community groups could gather, connect, and learn.</p> <p>The Trust continually strive to maintain the balance between preserving and displaying the Victorian heritage of the house, whilst keeping it accessible and relevant to community needs and encouraging volunteers to contribute to maintaining the history of the house while being involved in contributing to and supporting the community activities the building and surrounds enable.</p> <p>Avebury House provides a variety of regular activities and services. They have six annual events per year Richmond Gala; Anzac Remembrance; Matariki in the Zone; Spring Fair/Heritage Fest; Teddy Bears' Picnic and Christmas market plus six Vintage markets on site. These events provide opportunities for the community to engage, enjoy and support their wellbeing. These events remain successful because of the huge commitment of the team of volunteers who set up, pack down and clean up after each event. Appropriate waste is taken to Living Earth.</p> <p>The HUGS quilters are a group of volunteers who meet regularly and make handmade quilts for underprivileged children. Since 2003, 2,000 have been donated. A contribution to the cost of materials, (batting and flannelette backing) is sought.</p> <p>The monthly newsletter is a high value output, but also a big expense for the house It requires a large printer that is useful for promotional material and used by the community garden group and several regular house users. The Trust this year is actively seeking future advertising revenue.</p> <p>In respect of equipment, alternative funding was previously secured for 60 of the 80 house chairs and to have a full complement of seating in the house, twenty more chairs are needed. A new vacuum cleaner is also required.</p> <p>Rationale for Staff Recommendation:</p> <p>The project aligns to People, Place, Participation and Preparedness pillars of the Strengthening Communities Together Strategy, particularly the objective that supports the community activation and kaitiakitanga of public places and spaces.</p> <p>Avebury House connects the community, empowers, and supports volunteers, enhances learning and the sense of belonging.</p> <p>Coastal-Burwood -Linwood staff recommendation - \$1,200</p>
--	---	--

11. Waipapa Papanui-Innes-Central 2024-25 Discretionary Response Fund Application - St Albans Resident Association (SARA) Inc - Community Gardens Coordinator

Reference Te Tohutoro: 25/314871

Responsible Officer(s) Te Stacey Holbrough, Community Development Adviser

Pou Matua: Stacey.holbrough@ccc.govt.nz

Accountable ELT

Member Pouwhakarae: Andrew Rutledge, Acting General Manager Citizens and Community

1. Purpose and Origin of the Report Te Pūtake Pūrongo

- 1.1 The purpose of this report is for the Waipapa Papanui-Innes-Central Community Board to consider an application for funding from its 2024-25 Discretionary Response Fund from the organisation(s) listed below.

Funding Request Number	Organisation	Project Name	Amount Requested	Amount Recommended
00068555	St Albans Resident Association (SARA) Inc	Community Gardens Coordinator	\$10,820	\$4,000

- 1.2 There is currently a balance of \$34,222 remaining in the fund.

2. Officer Recommendations Ngā Tūtohu

That the Waipapa Papanui-Innes-Central Community Board:

1. Receives the information in the Waipapa Papanui-Innes-Central 2024-25 Discretionary Response Fund Application - St Albans Resident Association (SARA) Inc - Community Gardens Coordinator Report.
2. Notes that the decisions in this report are assessed as low significance based on the Christchurch City Council's Significance and Engagement Policy.
3. Approves a grant of \$4,000 from its 2024-25 Waipapa Papanui-Innes-Central-Innes Discretionary Response Fund to St Albans Resident Association (SARA) Inc towards the Community Gardens Coordinator project.

3. Key Points Ngā Take Matua

Strategic Alignment Te Rautaki Tīaroaro

- 3.1 The recommendations above are aligned with the Council's Strategic Framework and in particular the strategic priority of being an Inclusive and equitable city which puts people at the centre of developing our city and district, prioritising wellbeing, accessibility and connection.
- 3.2 The recommendations are consistent with the Strengthening Communities Together Strategy.

Decision Making Authority Te Mana Whakatau

- 3.3 The Community Board has the delegated authority to determine the allocation of the Discretionary Response Fund for each community.
- 3.3.1 Allocations must be consistent with any Council-adopted policies, standards or criteria.
- 3.3.2 The Fund does not cover:
- Legal or environmental court challenges against the Council, Council Controlled Organisations, or Community Board decisions.
 - Projects or initiatives that change the scope of a Council project or lead to ongoing operational costs to the Council (though Community Boards can recommend to the Council that it consider a grant for this purpose).

Assessment of Significance and Engagement Te Aromatawai Whakahirahira

- 3.4 The decisions in this report are assessed as low significance based on the Christchurch City Council’s Significance and Engagement Policy.
- 3.5 The significance level was determined by the number of people affected and/or with an interest.
- 3.6 Due to the assessment of low significance, no further community engagement and consultation is required.


Discussion Kōrerorero

- 3.7 At the time of writing, the balance of the 2024-25 Discretionary Response Fund is:

Total Budget 2024-25	Granted To Date	Available for allocation	Balance If Staff Recommendation adopted
\$111,628	\$77,406	\$34,222	\$30,222

- 3.8 Based on the current Discretionary Response Fund criteria, the applications above are eligible for funding.
- 3.9 The attached Decision Matrix provides detailed information for the applications. This includes organisational details, project details, financial information, and a staff assessment.

Attachments Ngā Tāpirihanga

No.	Title	Reference	Page
A 	Waipapa Papanui-Innes-Central 2024-25 Discretionary Response Fund Application - St Albans Resident Association - Community Gardens Coordinator	25/345112	41

Signatories Ngā Kaiwaitohu

Author	Stacey Holbrough - Community Development Advisor
Approved By	Emma Pavey - Manager Community Governance, Papanui-Innes-Central

2024/25 WAIPAPA PAPANUI-INNES-CENTRAL DISCRETIONARY RESPONSE FUND DECISION MATRIX

Organisation Name	Project	Request Budget	Staff Recommendation	Priority
<p>St Albans Residents Association (SARA) Inc</p> <p>Application Number: DRF24/25_020_PIC</p> <p>Physical address 1047 Colombo St, St Albans</p> <p>Funding History (past three years) 2024/25 - \$35,000 - Operations - SCF PIC 2024/25 - \$2,000 - Operations - SCF PIC 2023/24 - \$3,500 - Community Website - DRF PIC 2023/24 - \$35,000 - Operations - SCF PIC 2023/24 - \$781 - Rat Trap Project - DRF PIC 2022/23 - \$2,000 - St Albans News - DRF PIC 2022/23 - \$150 - Halloween in Abberley Park - DRF PIC</p>	<p>Community Gardens Coordinator</p> <p>St Albans Residents Association (SARA) are an active Resident Association and the kaitiaki (guardians) of Te Kohinga - St Albans Community Centre and their Kohinga Māra (community gardens). SARA are seeking funding for their part-time Community Gardens Coordinator.</p>	<p>Total Cost of Project: \$10,820</p> <p>Total Amount Requested: \$4,500</p> <p>Percentage of project cost requested: 42%</p> <p>Contribution sought towards: Garden Contractor - \$4,500</p> <p>Other sources of funding: Funds on Hand - \$6,320</p>	<p>\$4,000</p> <p>That the Waipapa Papanui-Innes-Central Community Board makes a grant of \$4,000 from its 2024/25 Waipapa Papanui-Innes-Central Discretionary Response Fund to St Albans Residents Association (SARA) Inc towards the Community Gardens Coordinator project.</p>	<p>2</p>

<p>CCC Strategy Alignment</p> <p>Strengthening Communities Together Strategy</p> <p>Outcomes that will be achieved through this project</p> <p>This collaboration aims to provide a role in the community supported by both organisations, to improve retention and in turn increase engagement and productivity.</p>	<p>Staff Assessment</p> <p>The St Albans Residents Association (SARA): Develops local activities for residents, including children and older residents. Educates residents about matters potentially affecting them, their environment, their welfare, through the publication and circulation of information. Promotes the health and wellbeing of St Albans residents. Provides space and resources for residents to meet and connect.</p> <p>Kohinga Māra (community garden) was established in 2021 and has thrived and grown with local businesses and contractors donating resources. SARA employs a part-time Community Gardener whose main task is to undertake basic gardening duties in the Kohinga Māra which is different from the Community Gardens Coordinator role. The Community Gardens Coordinator role is about planning and implementing the work that needs to be done to maintain food production and supporting coordinating the Community Gardener and volunteers not just at Kohinga Māra but also at Abberley Park. Kohinga Māra has approximately 15 volunteers per month and garden produce is placed in the community pantry for the community to take and use.</p> <p>SARA is seeking funding for a new Community Gardens Coordinator. The coordinator has been engaged for 10 hours per week to develop their Kohinga Māra and work closely with The Friends of Abberley Park and other garden spaces in St Albans. This new position has occurred in collaboration with Packe Street Park and Community Garden (Packe Street Park) to ensure a continuation of the engagement of the current Packe St Park Community Gardens Coordinator. In recent years the Packe Street Park committee have contracted a number of good coordinators who after gaining experience have moved on quickly to fulltime roles elsewhere.</p> <p>Rationale for staff recommendation</p> <p>Project aligns to the People and Participation pillars of the Strengthening Communities Together Strategy, particularly the objective of 2.1 Encourage communities to create and sustain a sense of local identity and ownership. The community coordination and collaboration are a good community development practice.</p>
---	--

12. Waipapa Papanui-Innes-Central Community Board Area Report - March 2025

Reference Te Tohutoro: 25/206634

Responsible Officer(s) Te Pou Matua: Emma Pavey, Community Governance Manager Papanui-Innes-Central

Accountable ELT Member Pouwhakarae: Andrew Rutledge, Acting General Manager Citizens and Community

1. Purpose of Origin of the Report Te Pūtake Pūrongo

- 1.1 This monthly staff-generated report provides the Board with an overview of initiatives and issues current within the Community Board area.

2. Officer Recommendations Ngā Tūtohu

That the Waipapa Papanui-Innes-Central Community Board:

1. Receives the information in the Waipapa Papanui-Innes-Central Community Board Area Report - March 2025.

3. Community Support, Governance and Partnership Activity

3.1 Community Governance Projects

Activity	Detail	Timeline	Strategic Alignment
Youth Recreation	<p>Staff are working in collaboration with youth focussed organisations to discuss potential opportunities in the Papanui, Innes and Central ward areas. These include:</p> <p>Papanui House of Hoopz was held in collaboration with CCC, YCD and Te Ora Hou. More details in the report.</p> <p>Planning is underway for an event to activate Stanmore Village in collaboration with CCC, YCD and the local community. More details will be provided as plans are confirmed.</p> <p>Initial conversations have begun with SARA to hold a Skate Jam in the St Albans area in the coming months. More details will be provided as plans are confirmed.</p> <p>Staff are working in collaboration with Te Ora Hou and Papanui Youth Development Trust to discuss their upcoming events and the upskilling opportunities and support available.</p>	Ongoing	<p>Te Haumako Te Whitingia</p> <p>Strengthening Communities Together Strategy</p>

<p>Shirley Community Reserve</p>	<p>The Board resolved for staff to initiate the process to design an on-budget community building on the Reserve that will enable mixed use.</p> <p>Emma Norrish, Jake McLellan and Emma Twaddell will join the Working Party for the project to represent the Community Board with work underway to identify community representatives to also join the group. It is anticipated that an initial meeting will be held the end of March/April.</p> <p>The Project Manager has engaged with Geotech consultants who have started their investigations.</p>	<p>Ongoing</p>	<p>Te Haumako Te Whitingia Strengthening Communities Together Strategy</p>
<p>Youth Safety</p>	<p>A youth space has opened in Northlands Mall with the support of the Board's Better Off Fund, in collaboration with Papanui Youth Development Trust and Te Ora Hou.</p> <p>Participation numbers have been steady with young people using the space after school hours, often prior to catching buses from the bus exchange.</p> <p>Further work is progressing to support the installation of Wi-Fi at the site, and the possibility of having the bus timetable screens installed.</p>	<p>Ongoing</p>	<p>Te Haumako Te Whitingia Strengthening Communities Together Strategy</p>
<p>Revitalisation of Petrie Park</p>	<p>An engagement session and community barbeque were held in Petrie Park on 23 February 2025 to talk with locals about the Petrie Park tree planting plan that has been out for consultation.</p>	<p>Ongoing</p>	<p>Te Haumako Te Whitingia Strengthening Communities Together Strategy</p>
<p>Safety Initiatives - CPTED</p>	<p>The CPTED report the Board funded with its Better Off Fund for MacFarlane Park has been completed and presented back to the Board.</p>	<p>Relevant Council teams are reviewing the CPTED report.</p>	<p>Te Haumako Te Whitingia Strengthening Communities Together Strategy</p>
<p>- Aggressive begging</p>	<p>Metro staff are working with local staff, the Police and Christchurch City Mission to help address the issues that have been identified. There has been increased Police visibility through the community beat team's and the Christchurch City Mission workers have been present on the streets offering support when required. This work has seen a decrease in the aggressive begging being reported.</p>	<p>Ongoing</p>	<p>Te Haumako Te Whitingia Strengthening Communities Together Strategy</p>

Safety Initiatives Civil Defence Resilience Plans	Staff are working with groups in the Papanui, Innes and Central wards to create Community Resilience Plans that will support their communities during events. This is supported by Civil Defence staff who has been providing expert guidance and input into the plans.	Ongoing	Te Haumako Te Whitingia Strengthening Communities Together Strategy
Safety Initiatives All Things Shirley	Shirley Community Trust hosted a community meeting inviting along a range of CCC staff and Board Members to look at the future development of MacFarlane Park and the surrounding area. This conversation included what is happening in the community, the recommendations from the CPTED report and what the community aspirations are. Staff will continue to support the community on their journey.	Ongoing	Te Haumako Te Whitingia Strengthening Communities Together Strategy
Community Pride Garden Awards	These awards are in partnership with Keep Christchurch Beautiful's Street and Garden Awards. Participating Boards award certificates to residents and businesses who maintain their street-visible gardens to a high standard.	Certificates will be issued from April.	Te Haumako Te Whitingia Strengthening Communities Together Strategy
Summer with your neighbours (SWYN)	SWYN is about bringing people closer together and celebrating the unique and diverse mix of each neighbourhood. Below are photos of some recent SWYN events from participants.	This year's events can be held from 26 October 2024 to 31 March 2025.	Te Haumako Te Whitingia Strengthening Communities Together Strategy



• **Summer With Your Neighbours Events**

“The Harrys Way gathering went well introducing three new neighbours (different homes) and catching up with long-time residents. It was a perfect afternoon and many thanks to the Board for their continuing support and contribution.”





On 31 January the Shirley Community Trust Neighbourhood Barbeque was held outside the MacFarlane Park Community Centre. The Trust’s Finance Manager reported it was: “Lots of fun as usual and a lovely, relaxed atmosphere to start the year off with, plus wonderful weather really made the evening. Thanks for the funding – so helpful.”



3.2 Community Funding Summary

The balance of the Board’s funding pools at the time of writing is currently as follows subject to subtraction of the grants proposed through the reports to this meeting as shown:

2024/25 Waipapa Papanui-Innes-Central Discretionary Response Fund (DRF)	
Approved Board Projects:	
<ul style="list-style-type: none"> • Summer with your neighbours; Youth Recreation; Community Liaison; Youth Development Fund; Community Pride Garden Awards 	
DRF Grants approved last meeting:	Granted:
<ul style="list-style-type: none"> • Christchurch Methodist Central Mission towards culturally responsive resources. 	\$2,178
AVAILABLE BALANCE (at time of writing):	\$34,222
Proposed DRF Grants (subject to approval at this meeting):	Recommended:
<ul style="list-style-type: none"> • Avebury House Community Trust towards volunteer expenses, materials and equipment 	\$8,000
<ul style="list-style-type: none"> • SARA towards wages for their Community Garden Coordinator 	\$4,500
Prospective remaining balance (if all recommendations accepted):	\$22,222

2024/25 Waipapa Papanui-Innes-Central Youth Development Fund (YDF)	
YDF grants approved so far this financial year:	
<ul style="list-style-type: none"> • Grant to Disharn Noda towards travelling to Tahiti for a cultural exchange 	\$300
<ul style="list-style-type: none"> • Grants to Katia and Elena Ashmore towards the costs of attending the National Secondary Schools' Brass Band Course 2024 	\$300 & \$300
<ul style="list-style-type: none"> • Grant to Laura Powley towards participating in the Avonside Girls' High School French Trip to Angers 	\$500

<ul style="list-style-type: none"> Grant to Olivia Zeng towards the costs of attending the Aspire (Dance) Programme at Convergence Dance Studio 	\$100
<ul style="list-style-type: none"> Grant to Natalia Kay towards competing in the Deaf World 3v3 Basketball Championships at Gallaudet University, Washington DC 	\$500
<ul style="list-style-type: none"> Grant to Ollie Dysart towards representing the South Island at the ITKD Taekwondo National Championships 2024 in Palmerston North 	\$350
<ul style="list-style-type: none"> Grant to Villa Maria College for Oriana Puhiatau towards playing in the 1st XI Football Team attending the New Zealand Secondary Schools Tournament in Blenheim 	\$100
<ul style="list-style-type: none"> Grant to Tiana Olney towards attending the Outward Bound Classic Course 	\$300
<ul style="list-style-type: none"> Grant to Jorja Ashley McCaughan towards competing at the NZCAF Aerobics Nationals in Queenstown 	\$200
<ul style="list-style-type: none"> Grant to Lauren Dyet towards travelling with the Mixx U19 Korfball Team to the National Championships in Taiwan (see Attachment A) 	\$500
AVAILABLE BALANCE (at time of writing):	\$4,550

3.3 The Mayor’s Welfare Fund

The Mayor’s Welfare Fund provides financial support to families and individuals in the community who are in extreme financial distress. It is a last resource when people have exhausted other appropriate sources such as Work and Income New Zealand (WINZ). The criteria and instructions on how to apply can be found here: [Mayors Welfare Fund - all you need to know](#).

3.4 Upcoming Community Events and Activities

- Volunteer Events**

Visit [this link](#) for the variety of volunteer events held around the city, and [this link](#) to volunteer at a Council-produced event. There is also information at [this link](#) on becoming a Graffiti Programme volunteer, or register at [this link](#) to join the Parks Volunteers Team.

Some planting events are [eligible for Children's University \(CU\) credits](#), and family-friendly. Schools can be supported by the ‘connect and grow’ planting programme: [Manaaki Taiao – Nurture Nature](#).

Or find other opportunities to volunteer in your community at [this link](#), whether it be sharing your passion for art at the Art Gallery, helping the [Friends of the Library](#), joining the [Friends of the Botanic Gardens](#), or any of the number of volunteer opportunities listed on the site for [Volunteering Canterbury](#).



- FRESH Events 2025**

Information on events from Youth & Cultural Development (YCD) is available at [this link](#).

- **Other upcoming community events and festivals in the city**

Visit [this link](#) for the variety of community events and festivals held around the city. You can also visit the [What's On](#) site, for one-off and regular events like:



- [Culture Galore 2025](#) – 8 March, 12-4pm at Ray Blank Park, 46 Maidstone Road - Culture Galore is a multicultural festival that celebrates our city's diversity with food, arts and crafts, and music and dance performances from more than 30 cultures that call Christchurch home.

- [Queer Eye for the Biblical Guy](#) – 12 March, 6-7.30pm at Aldersgate, 309 Durham Street North - A brief guide to LGBTQI+ characters in the bible, that

your Sunday School teacher might not have given you the full story about.

- [Project Night](#) – 18 March, 7-9pm at Photosynthesis, 400 St Asaph Street - Hear from artists about any stage of their photo projects, share yours, network and spend an evening as part of our passionate creative community making fine art.



- [Food Lovers Masterclass Lower Waste Session](#) – 24 March, 5.30-7.30pm at Tūranga - Learn how to reduce your household food waste with Kate Fenwick, a nationally recognised educator and motivational speaker.



- [Richmond Gala](#) – 29 March, 10am-2pm at Avebury House - A brilliant local day out, and a showcase of all the amazing happenings in and around the suburb, the Richmond Gala is a collaborative community event.

They'll be live entertainment, fabulous food vendors, and of course Avebury's famous Devonshire Tea in the House!

- [Ōtautahi Pride Service](#) – 30 March, 10-11.30am at Aldersgate, 309 Durham Street North - As 2025 Ōtautahi Pride month comes to an end, all are warmly invited, to join this fabulous annual Pride Service. Followed by sumptuous refreshments.

- **Christchurch City Council Libraries Events**

Christchurch City Libraries run a wide range of classes and programmes both in libraries and through its learning centres for everyone from babies to seniors, with information at [this link](#).



The Libraries' [technology programmes](#) are designed to help people become more comfortable with technology, and to make better use of available computer tools. Better Digital Futures Computer Programmes for ages 65+ is a free programme (though it does require bookings). There is also technology help drop-in sessions, and a GenConnect Drop-in to help with questions about your iPad, Smart Phone or Tablet, and how to use Skype, Facebook, or share your

photos with family or friends.



[JP Clinics](#) - Justices of the Peace are available at set times at a number of Christchurch City libraries. JPs can witness signatures, verify copies of documents, hear oaths, declarations and more. There is no charge for JP services.

[Book Clubs and Book Discussion Groups](#) - If you enjoy reading, sharing ideas and getting together with friends, you might enjoy being in a book club or reading group. The library can help.

The Libraries' Events Calendar can be found [here](#), and there are dedicated pages for significant events and related topics like:

- [Neurodiversity celebration week](#)

Resources and events are listed at the above link for the neurodiverse community, including people with ADHD, Autism, Dyspraxia, Dyslexia, Dyscalculia and more.

- [International Women's Day 8 March](#)

This global day connects women around the world and aims to inspire them to achieve their full potential.

- [St Patrick's Day - 17 March](#)

Links and resources about the patron saint of Ireland and Irish culture are available through this page developed by Christchurch City Libraries.



- [Race Relations Day](#)

Race Relations Day is on 21 March each year. This page recommends books and resources with a focus on uniting against racism and hate.



- [International Children's Book Day](#)

2 April is International Children's Book Day. Celebrate at your library, or at home - everywhere!

3.5 Participation in and Contribution to Decision Making

3.5.1 Report back on other Activities contributing to Community Board Plan

- **Riverlution Farmers Market**



Staff attended the inaugural Farmers Market held at Riverlution on Saturday 15 February 2025. Over the time of the event 9am to 12pm over 200 people attended, and the stalls were well patronised.

Fresh garden produce, cheeses, sprouts, oils/pickles, ground coffee, sour dough breads were available. A cake stall, pottery stall and the Riverlution information tent were also set up.

Vendors sold out of eggs, bread, honey, and most of the vegetables. The café did a roaring trade, and it was their biggest day since it started.

Riverlution staff and volunteers were available to answer any questions and support the event.



- **Papanui House of Hoopz**

Papanui House of Hoopz took place on 8 February 2025 at Paddington Park. The event was organised by YCD with support from the Christchurch City Council and Te Ora Hou. It was a fantastic day for the rangatahi, with a great turnout and seven



teams competing. Community members and local neighbours also stopped by to enjoy the atmosphere, music, free sausages, and prizes. The newly refurbished basketball court looked amazing as well.

- **Opening of Christchurch Methodist Mission's new housing**



On 5 February 2025, staff took part in the Christchurch Methodist Mission's celebration marking the opening of 14 new accessible homes at Wesley Village.

Housing Minister Chris Bishop officially opened the units, which include both social housing and affordable rental options. Designed with accessibility in mind, these homes also feature solar panels to help lower energy costs. It was a wonderful event, bringing the community together in celebration.



- **Parks Update**

The Community Partnership Rangers continue their collaborative work with the community around the greenspaces in the Board area:

Essex Reserve – Photos from the last working bee are below.



Packe St Community Garden – The Community Partnerships Ranger recently met the Council Arborist, Pack St Garden Co-Ordinator, and Treotech, to talk about tree maintenance to happen in the reserve. The idea is to trim trees back down to a manageable level for the volunteers to maintain.

The possibility of adding a few seats into the reserve, and replacing the stolen chain has also been discussed, and the Community Partnerships Ranger is working on getting some compost, plants and mulch delivered for the volunteers to use. Altogether they report that things are ticking along nicely at the community garden, and the collaboration with the Garden Co-Ordinator is going really well.

Petrie Park – Staff had a meeting there recently with members from We Are Richmond to chat about their landscape plan for the park. So far, the Parks team is happy with what have been proposed, and the goal is to have the plan approved at the same time as the Urban Forest Planting Plan.

Once We Are Richmond's plan is approved, they will need to maintain and find funding for the assets they want to put into the park.

Macfarlane Park – Shirley Community Trust have requested a few hundred plants to do an infill planting in the birdsong trail this autumn. The Community Partnerships Ranger has put an order into the nursery and will aim to help.

- ***Parakoire Recreation and Sport Centre Site Visit***

On 14 February 2025 members of the community board and governance team took the opportunity to see the progress on constructing the [Parakoire Recreation and Sport Centre](#).



When complete, it will be the largest aquatic and indoor recreation and leisure venue of its kind in New Zealand. The scale of the facility was amazing to see, and it was truly impressive the thought that has been put in to ensuring it will foster such a wide range of recreational and sporting opportunities. The site visit was eye-opening for how much more it will bring to the city – so much more than just a pool, though the swimming and driving spaces are especially spectacular.

- ***Petrie Park Community Barbeque***

On 23 February 2025 We Are Richmond hosted a wonderful community barbeque at Petrie Park, which facilitated meeting some new residents, existing neighbours and lots of happy dogs.

The Council's Engagements team was also there to talk to locals about the





proposed new planting plan created by We Are Richmond in conjunction with the Council's Parks team.



- **Te Whare Roimata Cultural Fun Day**



Staff attended the Te Whare Roimata Cultural Fun Day held at the Doris Lusk Reserve on Saturday 1 March. Over 300 people attended over the Day, with local volunteers supporting the event, ensuring that it ran smoothly and was a success.

In conjunction with the Village Market, food stallholders offered varied exotic fare from, India, Morocco, Macedonia, Afghanistan, Bohemia, Sri Lanka and Vietnam.

Local performers included the Maea ukelele band, Chinese classical dance, Kashmir - Egyptian and Turkish dance, Jobelle Filipino / Kiwi hip-hop, Eastern European dances, Belly Dancers, Brazilian Capoeira group, Macedonian dance and Brazilian Samba and Music.

The event contributes to the building and celebration of the strong, multicultural identity of the Inner City East, and the importance and richness of its diversity. It is encouraging that more groups within the neighbourhood want to join the event next year.





• **Children's Day 2025**

The Papanui-Innes-Central Community Governance Team supported this year Children's Day event being an amazing celebration of our city's tamariki, full of fun interactive activities and entertainment.



3.5.2 **Council Engagement and Consultation**

- [Local Alcohol Policy development](#) (early feedback closes 9 March 2025)

Options for what could be included in a draft Local Alcohol Policy for Christchurch and Banks Peninsula have been open for feedback.

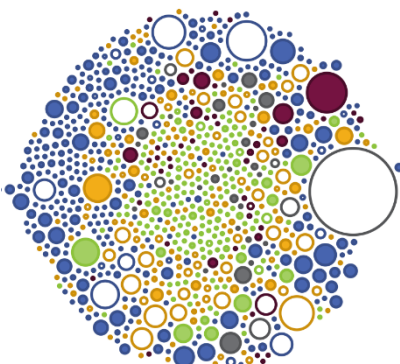


- [Get ready](#) - How prepared are you and your family for a civil defence emergency?

Complete the five-minute Emergency Management Canterbury Community Resilience Survey at the link above.

- [Draft Annual Plan 2025/26](#) (closes 26 March 2025)

An Annual Plan outlines the activities, services and capital projects the Council will deliver and how it will fund them, including the required rates. It also highlights any key changes from the Long Term Plan for the year.



This Draft Annual Plan covers the second financial year of the Long Term Plan, from 1 July 2025 to 30 June 2026.

Also explore the [interactive tool](#) that shows how much money the Council is spending on capital projects and where.



- [Development Contributions Policy Review 2025](#) (closes 26 March 2025)



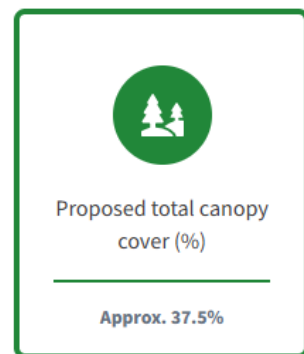
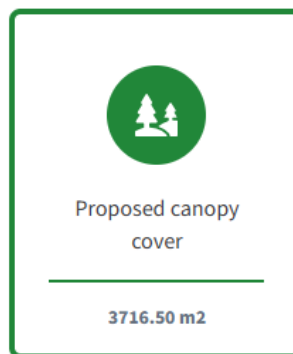
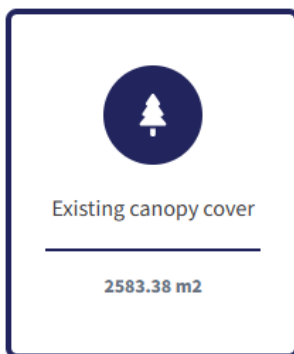
The Council has had a development contributions policy since 2004. Development contributions are collected to fund infrastructure required to support growth including the provision of roading, water supply, wastewater, parks, swimming pools and libraries along with public transport and active travel infrastructure.

The current Development Contributions Policy was adopted in 2021 and now requires review.

The policy sets out the methodology used to recover the cost incurred by Council for providing growth infrastructure from those who benefit from the provision of that infrastructure, such as private developers.

- [Petrie Park - tree planting plan](#) (closes 10 March 2025)

Help shape the tree planting plan for Petrie Park.



- [Plan Change 20 - Industrial Plan Change](#) (early feedback closes 17 March 2025)

The Council is proposing to make changes to its planning rulebook, the District Plan, to help manage the effects of industrial activity happening close to housing.

Early feedback is sought on the proposal so the potential environmental, economic, social and cultural impacts can be weighed up before notifying the plan change for submissions later this year.

- [Local Water Done Well](#) (closes 6 April 2025)

Local Water Done Well is a government-led reform aimed at addressing long-standing water supply, wastewater and stormwater infrastructure challenges across the country. It is intended to address inconsistencies in water service delivery and ensure that every community has access to safe, reliable, and sustainable water services. It provides some local flexibility on how this is achieved; however, the reform puts a strong emphasis on compliance with central government rules and regulations.

- [Play space projects](#)

The Council are constantly replacing, upgrading, and creating new play spaces for people of all ages. Find out more and share what you think about play space projects.

- [Consultations in other parts of the district:](#)
 - [Addington Park Community Garden Lease](#) (closes 18 March 2025)
 - [Chelsea Street renewal](#) (closes 23 March 2025)

3.6 Governance Advice

3.6.1 Customer Service Request (CSR) Report for the Papanui-Innes-Central Wards

Refer to **Attachment B** for the 1 to 28 February 2025 statistics, providing an overview of the number of CSRs that have been received, including the types of requests being received and a breakdown of how they are being reported.

[Snap Send Solve](#) is the smartphone app the Council offers to help make reporting issues easy, and it is still possible to [report issues online](#), by calling Council on 03 941 8999 or visiting one of the Council's [Service centres](#).

3.6.2 Waipapa Papanui-Innes-Central Community Board Plan 2023-25 – Monitoring as of February 2025

Refer to **Attachment C** for a summary of occurrences to February 2025 relevant to the advancement of the Board's priorities, which are also displayed on the Board Social Pinpoint page.

3.6.3 Climate action

The Board's vision statement reflects its commitment to supporting the [Ōtautahi Christchurch Climate Resilience Strategy's climate goals](#) and the [Ōtautahi-Christchurch Urban Forest Plan](#).



A key resource for understanding the Council's targets, what it's doing, how emissions are tracking, and finding relevant community events and activities, is the [Council's Climate Action webpage](#).

We've got greenhouse gas emission reduction targets to aim for. [Find out here](#) where our emissions come from and how we're tracking them within the Council and

across the Christchurch district.

We need everyone to play their part to reach our targets. These online tools can help you measure and reduce your household or business greenhouse gas emissions:

- [Future Fit household emissions calculator](#)
- [Sustainable Business Network Climate Action Toolbox](#)

Whether you are going to work or school, choose ways that are better for you and our environment. For more information, visit [getting to work](#) or [getting to school](#).

We also recognise that our tamariki and rangatahi are the leaders of tomorrow. The [Learning Through Action programme](#) encourages students to get creative and find innovative ideas for meaningful climate action.

- **Prepare for the impacts of climate change**

We're already feeling the effects of a changing climate in the form of wetter winters, and hotter, drier and longer summers. [Find out more here](#), and browse the [Christchurch District Risk Screening Report \(2022\)](#), which identifies how climate

change will affect our natural and built environments. The document is based on the latest scientific information and input from key agencies in the region.

- **Get updates on climate action**

[Sign up](#) for the Council's newsletter and get the latest news and information delivered to your inbox.



3.6.4 Community Patrols

The [Community Patrols of New Zealand website](#) hosts a wealth of information relevant to what they do in helping to build safer communities, becoming a patroller, and setting up a patrol. Patrols in the Board area include the Christchurch North and City Park community patrols. Their [statistical information](#) can be found on the website.

3.6.5 Planned road works and closures

Planned road works and closures are indicated on the map at the [Traffic Updates page at this link](#). Additionally, a Smartview of nearby road works and closures is available at the following link: <https://smartview.ccc.govt.nz/travel/roads>.

There is also a project page for the work in Bishopdale and Papanui at [this site](#).

3.6.6 Public Notices

- [Temporary road closures - Sea 2 Sky Challenge - City2Surf 2025 - Le race - Round the Bays Running Race - Single Fin Mingle - Canterbury University graduation parade - Christchurch Marathon](#)

3.6.7 School travel

The Council offers a wealth of resources [at this link](#) relevant to how together we can make it way safer and easier for more children to walk, bike and scooter to school.

[Good-to-go ways to get to school](#) is an exciting programme designed to support schools in encouraging safe, active, fun, affordable, low-emission ways to travel to and from school.

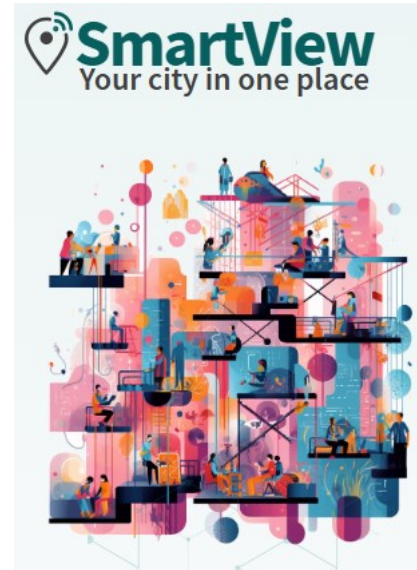


3.6.8 Travel Planning

The Council also offers free city travel planning to help organisations, businesses and staff get to know their travel options, with personalised journey planning sessions, advice, practical resources, and services such as Metro incentives for taking the bus, and onsite bike workshops. Information is available [at this link](#), which notes that over 50 workplaces have been supported since 2016, assisting thousands of staff across the city.

3.6.9 SmartView

The Council's [SmartView page](#) gives users access to a range of real-time information about the city, including data on how to find local mountain bike tracks and also check that they are open, the number of spaces available in car park buildings, the nearest bus stop and the time of the next arrival, air quality, how to get to places, events, where to see street art, weather updates and the latest airport arrivals and departures. Advice Provided to the Community Board Ngā Kupu Tohutohu ka hoatu ki te Poari Hapori



4. Advice Provided to the Community Board Ngā Kupu Tohutohu ka hoatu ki te Poari Hapori

4.1 Start Work Notices (SWN)

SWN relating to the Board area are separately circulated to the Board. All Board area and city-wide start work notices can be found at [this link](#). Recent SWN relating to the Board area are:

- Akaroa Street, Dawe Street & Onawe Place - watermain renewal (*circulated 6 March 2025*)
- Slater Street - investigation work for road and footpath renewal (*circulated 5 March 2025*)
- Colombo Street and Gloucester Street – footpath and signals works (*circulated 25 February 2025*)
- Innes Road - street renewal (*circulated 25 February 2025*)
- Cranford Street / McFaddens Road intersection - safety improvements (night and day works) (*circulated 10 February 2025*)
- Langdons Road water main relocation - night works (*circulated 5 February 2025*)
- England Street (Cashel Street to Hereford Street) - wastewater renewal (*circulated 5 February 2025*)

4.2 Memoranda

Memoranda related to matters of relevance to the Board have been separately circulated for the Board's information and are listed below.

- CCC: Ōtautahi Christchurch Organics Processing Facility: ECan Consent Update (*circulated 6 March 2025*)
- CCC: Parking near Christchurch Hospital - Clearway trial along Hagley Avenue (*circulated 5 March 2025*)
- CCC: Te Kaha Surrounding Streets update (*circulated 25 February 2025*)
- CCC: LAP consultation commences 17 February 2025 (*circulated 14 February 2025*)
- CCC: RMA/2024/3209 - 484 Madras St - Proposed Woolworths Supermarket - Update (*circulated 13 February 2025*)
- CCC: Eastgate Mall Public Transport Lounge (*circulated 11 February 2025*)
- CCC: RMA/2024/2460 - Resource consent application at 394 Prestons Road for Mitre 10 Mega (*circulated 5 February 2025*)

- CCC: Bus stop upgrades within the Waipapa Papanui-Innes-Central Community Board area (*circulated 5 February 2025*)
- CCC: Locky Dock (*circulated 4 February 2025*)
- CCC: Linwood Village streetscape upgrade-related post-construction monitoring (*circulated 4 February 2025*)

Attachments Ngā Tāpirihanga

No.	Title	Reference	Page
A  	Youth Development Fund Grant under Delegation for Lauren Dyet	25/412376	60
B  	Customer Service Request Report - February 2025	25/410652	62
C  	Waipapa Papanui-Innes-Central Community Board Plan 2023-25 – Monitoring as at February 2025	25/337019	63

Signatories Ngā Kaiwaitohu

Authors	Mark Saunders - Community Board Advisor Lyssa Aves - Support Officer Trevor Cattermole - Community Development Advisor Stacey Holbrough - Community Development Advisor Jason Chee - Community Recreation Advisor Hannah Martin - Community Support & Events Coordinator Emma Pavey - Manager Community Governance, Papanui-Innes-Central
Approved By	Emma Pavey - Manager Community Governance, Papanui-Innes-Central Matthew McLintock - Manager Community Governance Team John Filsell - Head of Community Support and Partnerships

Memos

Christchurch
City Council 

Memo

Date: 28 February 2025
From: Lyssa Aves
To: Emma Pavey
Cc: Mark Saunders
Reference: 25/398933

Waipapa Papanui-Innes-Central Community Board 2024/25 Positive Youth Development Application - Lauren Dyet

1. Application Details Ngā Taipitopito Tono

Date of Decision Meeting: 28 February 2024

Venue: Papanui

Date Application Received: 28 February 2024

Applicant: Lauren Alex Dyet

Application Assigned to: Lyssa Aves

Total Budget Costs: \$5,500

Funding Requested: \$500

Staff Recommendations: That the following is paid:

- \$500 for Lauren Dyet to travel with the Mixx U19 Korfball Team to the National Championships in Hsinchu, Taiwan from 15 to 27 March 2025.

2. Background Te Horopaki

- 2.1 This Positive Youth Development Application is from Lauren Alex Dyet for a grant to participate as a member of the Mixx U19 NZ Korfball Team on their trip to Hsinchu, Taiwan for the Korfball National Championships from 15 to 27 March 2025.
- 2.2 Lauren is a 17-year-old Year 13 student at Christchurch Girls' High School and is a dedicated athlete and a passionate ambassador for Korfball in Christchurch and at her school. She has been involved with Korfball for the last three years and is excited to be part of a relatively young sport in New Zealand. Lauren started taking her Korfball skills to the next level last year when she was selected as co-captain for the Mixx NZ U19 Korfball team. She is also actively involved in coaching her school Korfball teams and regularly referees games at the Mixx events. She plans to be a part of the Korfball sport for years to come not only as a player but also a captain, coach and referee. She is looking forward to the experience and new opportunities that travelling to Taiwan will offer her.
- 2.3 Lauren was very excited to gain an excellence in calculus and art for her 2024 NCEA studies. She hopes to start a primary teaching degree next year as she feels her personal experience

Memos



with learning gives her the foundation and understanding to support others in their learning journeys.

- 2.4 Lauren lives at home with her mother and four siblings. Lauren has fundraised with sausage sizzles, raffles, quiz nights and is working at a part time job to help with the costs of the trip.
- 2.5 The cost per applicant to compete is:

EXPENSES	Cost (\$)
Training Camps/Flights/ Visa/ Accommodation	\$5,500
Total	\$5,500

3. Summary He Whakarāpopototanga

- 3.1 Staff recommend \$500 from the Waipapa Papanui-Innes-Central 2024-25 Youth Development Fund to Lauren Alex Dyet to travel with the Mixx U19 Korfbal Team to compete at the National Championships in Hsinchu, Taiwan from 15 to 27 March 2025 .

4. Decision of Community Governance Manager – Emma Pavey – Te Whakataunga a te Kaiwhakahaere Kāwana ā-Hapori

- 4.1 Approved.

Attachments Ngā Tāpirihanga

There are no attachments to this memo.

Signatories Ngā Kaiwaitohu

Author	Lyssa Aves - Support Officer
Approved By	Emma Pavey - Manager Community Governance, Papanui-Innes-Central

Ticket Report

01 02 2025 - 28 02 2025

Filter by Ward

Papanui-Innes-Central

Filter by month

2025 (Year) + February (Month)

4704

Reported Tickets last month

86.61%

Resolved within SLA

Status as of Report Date

Closed/Resolved

68.43%

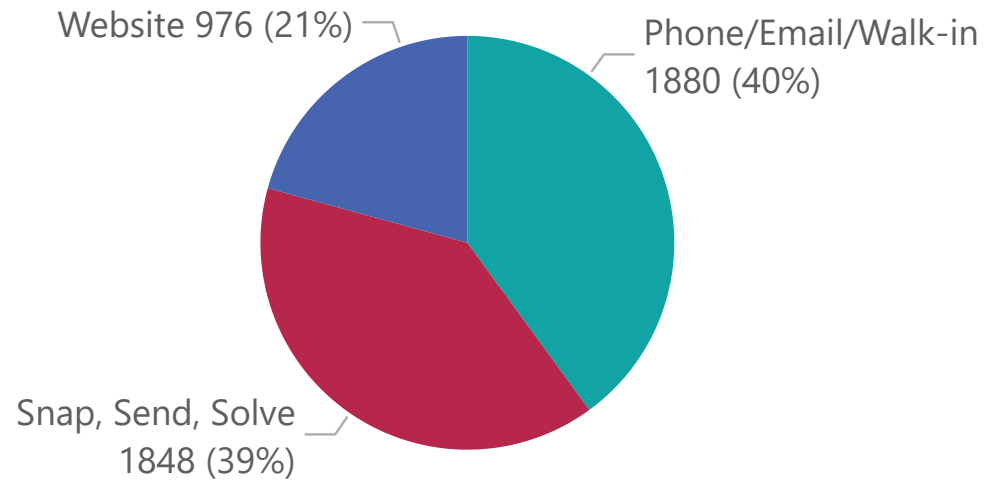
Open

28.89%

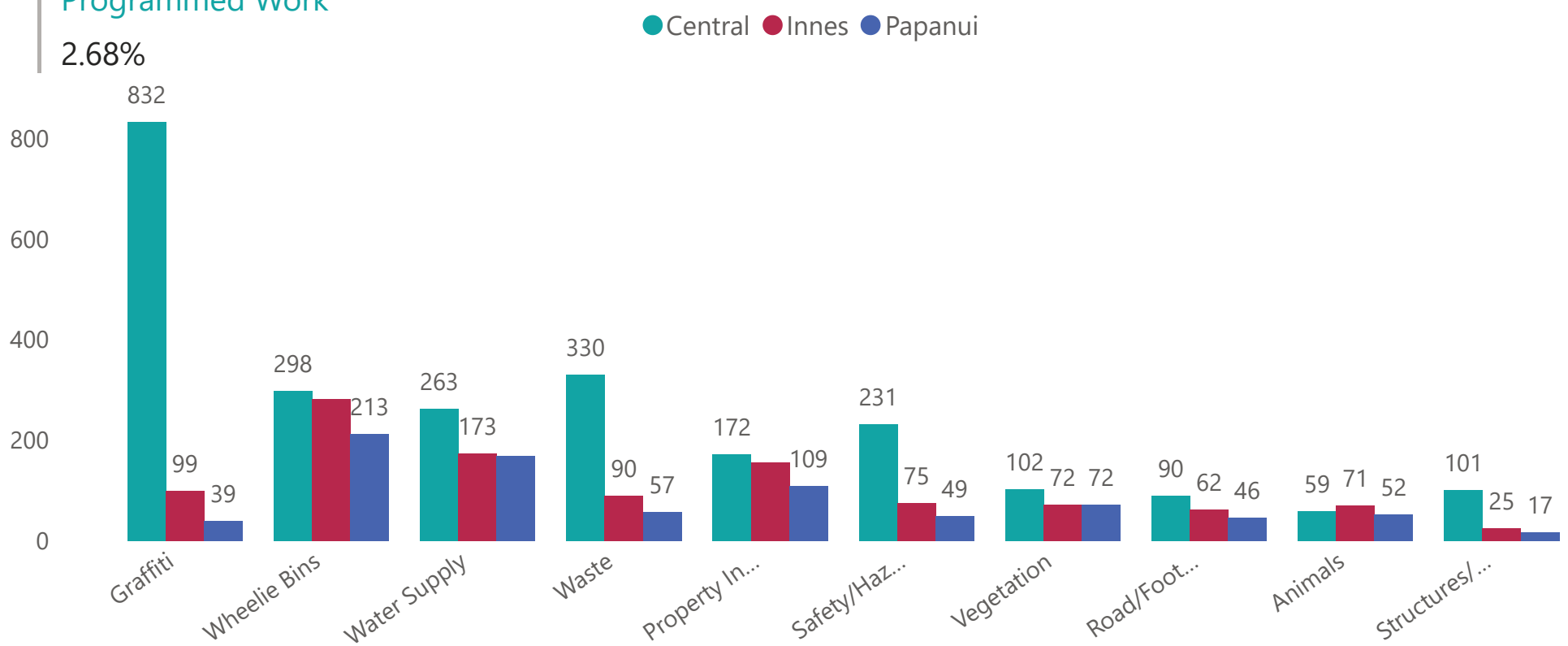
Programmed Work

2.68%

Channels



Top 10 Incident Categories



Top 10 Object Categories

# Tickets	ObjectCategory	+/- Previous Month
429	Graffiti - Utility box, pole, railway	-378
424	Graffiti - Fence, building or structure	-134
421	Water Leak	14
418	Litter	-78
287	Bin Not Collected	7
254	Damaged Bin	-25
156	Residential Property Files	19
150	Residential LIM	9
124	Trees	-28
98	Missing Bin	-33

Report date:
02 Mar 2025

Waipapa Papanui-Innes-Central Community Board Plan 2023-25 – Monitoring as at February 2025

Priority one

A Connected Transport Network in Papanui-Innes-Central (road, cycleways, paths)		
What the Board will do	Progress to date/actions taken	Measures of Success
<ul style="list-style-type: none"> Consider the Ōtautahi Christchurch Climate Resilience Strategy in all decision making. 	<ul style="list-style-type: none"> The Board reflected its commitment to supporting the Ōtautahi Christchurch Climate Resilience Strategy's Climate Goals as part of its submission on the 'Way Safer Streets' consultation, seeking to ensure that the Strategy is considered in that context. In its submission on the Draft Greater Christchurch Spatial Plan, the Board promoted its commitment to supporting the Ōtautahi Christchurch Climate Resilience Strategy's Climate Goals, aligning with strongly advocating for active transport modes and networks to support walking, cycling, and public transport. In its submission on the Draft Safe Speed Plan, the Board highlighted its commitment to the Strategy's Climate Goals, encouraging that the Council report reflect relevant assessment. The Board's LTP 2024-34 submission highlighted its commitment to supporting the Ōtautahi Christchurch Climate Resilience Strategy's Climate Goals. The Board's presentation at the LTP hearings drew particular attention to this. The Board also highlighted that it shone through in the 'what matters most' early engagement on the LTP that 'climate change' was either the top or near top priority for the wards in the Board area, reinforcing the representative aspect of this advocacy. Highlight on Council's Climate Action resources and newsletter added to the Board's Area Report. 	<ul style="list-style-type: none"> Feedback via a public forum, submissions, and correspondence on transport issues will be measured.
<ul style="list-style-type: none"> Support the installation of traffic lights on the Greers/ Langdon Road intersection. 	<ul style="list-style-type: none"> The Board, in its submission on the Council's Annual Plan 2023/24 expressed its particular support for Project 67987 (Greers/Langdons Traffic Lights) retaining priority. The Board was briefed on this project in September 2023, reviewing the proposed engagement on the options developed. Public consultation on the project ran 11-31 October 2023. The Board after considering the submissions, and hearing deputations on the project, recommended the Council approve the installation of traffic lights on the Greers/ Langdon Road intersection at a joint meeting with the neighbouring board on 4 December 2023. The Council accepted the recommendations on 7 February 2024, including that the project shall proceed to construction subject to adequate budget being available to meet the contract commitments for construction. The transport project webpage for the Greers and Langdons Road intersection upgrade can be found here: https://www.ccc.govt.nz/transport/improving-our-transport-and-roads/transport-projects/greers-and-langdons-road-intersection-upgrade/. The Board's LTP 2024-34 submission noted that: <i>The Board has supported the installation of traffic lights on the Greers/Langdons Road intersection, and so appreciates the provision from the Transport budget to complete this project, acknowledging the Council's support with this.</i> Notification received that the project has been awarded to Isaac Construction with a view to completing construction before the Christmas shopping period, and Start Works Notice circulated for the Greers Langdons Traffic Lights project. The Council's letter of response to the Board after the adoption of its LTP noted its commitment to \$1.845 million for traffic lights at the Greers/Langdons intersection. The Greers Langdons traffic lights were commissioned (switched on) in time for Labour Weekend, and a month ahead of schedule. 	<ul style="list-style-type: none"> The traffic light installation at the Greers/ Langdons Road intersection will be completed with traffic measures implemented to improve effective efficiency along the Langdons Road corridor.
<ul style="list-style-type: none"> Advocate for effective safety measures, and improved efficiency along the Langdons Road corridor from Northlands Shopping Centre to the Northlink Centre. 	<ul style="list-style-type: none"> The Board received a briefing in February 2023 regarding the Langdons Road Corridor, particularly in relation to the Northlink retail park development and further to its request to see a transport network assessment for the corridor, noted that the Integrated Transport Assessment for Stage 3 of the Retail Park suggests small scale potential impact. The Board also noted from the February 2023 briefing that some transport changes have been implemented to address safety, such as the installation of pedestrian refuge islands on Langdons Road, while other transport projects were planned, such as a slow speed zone along Langdons Road as part of the Safe Speed Neighbourhood – Papanui; cycle lanes and coloured surfacing following planned resurfacing of 	<ul style="list-style-type: none"> As above.

A Connected Transport Network in Papanui-Innes-Central (road, cycleways, paths)		
	<p>Langdons Road; the Greers/Langdons traffic lights; the Sawyers Arms/Northcote/Greers intersection improvements; and changes to intersections along Harewood Road via the Wheels to Wings MCR.</p> <ul style="list-style-type: none"> In its submission on the Draft Greater Christchurch Spatial Plan, the Board highlighted its support for effective safety measures and improved efficiency along the Langdons Road corridor from Northlands Shopping Centre to the Northlink Shopping Centre, noting that this area has become increasingly busy both vehicle and pedestrian-wise with one of the city's largest High Schools (Papanui High School) also being situated on this corridor. As part of the Council's Long Term Plan 2024-34 it was resolved (CLP/2024/00086): <i>That the Council notes that staff will report back on work programme requirements for Langdons and Springfield corridors to inform a future Annual Plan.</i> At the Transport Programmes information session on 31 October 2024, the Board requested staff provide information around options for the Greers-Northcote-Sawyers Arms Roads intersection, including monitoring to understand efficiencies extending through the Langdons and Northcote corridors, following on from the LTP carryover actions, and to assist future Annual Plan and LTP considerations being informed by the data in time for the Board submission. 	
<ul style="list-style-type: none"> Continue to support the greenway cycleway to link Richmond to the Central City. 	<ul style="list-style-type: none"> The Board submitted its advocacy for, and input on, the Richmond Neighbourhood Greenway Cycle Connection as part of its submission on the 'Way Safer Streets' consultation. The Board provided its input and confirmed its support for the green cycleway to link Richmond to the Central City within the context of the briefing it received in June 2023 on the CERF projects in the Board's area. The Board Chair presented to the Council on 'Way Safer Streets' in September 2023, who approved the construction of the Richmond Neighbourhood Greenway project, conditional on implementation costs being agreed and incorporated into the Transport Choices Funding agreement between Waka Kotahi and Council. Construction update memo received 27 November 2023 noting that with the Transport Choices section of the cycleway on pause, the design and cost estimates for the CRAF section of the cycleway needed to be separated from the Transport Choices section, and, because of this, the construction of the CRAF section of the cycleway would start in 2024. The Board's LTP 2024-34 submission noted that: <i>The Board also indicated in its Plan it would continue to support the greenway cycleway to link Richmond to the central city; we appreciate that an extension of the greenway beyond the area the Board are able to support with the CRAF funding has been hindered by the government's announcement that no further funding from the Climate Emergency Response Fund for projects that are part of the Transport Choices programme will be approved.</i> The Board's presentation at the LTP hearings (https://www.youtube.com/watch?v=Sp1eyAcu7bl) also highlighted its support for the greenway cycleway to link Richmond to the Central City. On 12 February 2025, the Council resolved in respect of the proposed Draft Annual Plan 2025-26 that it: <i>Re-instates the second section of Richmond Greenway (Southern end CERF - Transport Choices project) in the draft 2025/26 Annual Plan with a budget of \$900,000, with \$600,000 of the budget being in Financial Year 25/26, and the remainder in Financial Year 26/27.</i> 	<ul style="list-style-type: none"> The completion of a connecting cycleway link from Richmond to the Central city.
<ul style="list-style-type: none"> Advocate for the installation of a pedestrian safety crossing on Springfield Road. 	<ul style="list-style-type: none"> The Board, in its submission on the Council's Annual Plan 2023/24 advocated that priority be given within existing programmes to advancing projects reflecting the Board's priorities where possible, especially including installation of safe pedestrian crossing facilities on Springfield Road. The Board highlighted its priority relating to pedestrian safety crossing on Springfield Road in its October 2023 monthly presentation to the Council. The Board's LTP 2024-34 submission noted the Board's advocacy for pedestrian safety on the Springfield Road corridor. At its meeting on 9 May 2024, the Board received a presentation from St Albans School, and noted its wish that the safety concerns for children travelling to St Albans School be considered with urgency, including in relation to the lack of pedestrian crossings on Springfield Road. As part of the Council's Long Term Plan 2024-34 it was resolved (CLP/2024/00086): <i>That the Council notes that staff will report back on work programme requirements for Langdons and Springfield corridors to inform a future Annual Plan.</i> 	<ul style="list-style-type: none"> The installation of a pedestrian crossing on Springfield Road.

A Connected Transport Network in Papanui-Innes-Central (road, cycleways, paths)		
	<ul style="list-style-type: none"> At the Transport Programmes information session on 31 October 2024, the Board requested staff arrange to brief them on on the 'St Albans - Springfield Rd & Edgeware & Abberley' school safety project with options to push this forward. 	
<ul style="list-style-type: none"> Continue to engage with the community on local transport issues, and take a measured, big-picture view, including the impacts of intensification when considering transport issues in our community. 	<ul style="list-style-type: none"> In its submission on the 'Way Safer Streets' consultation, the Board asked the Council to consider any bigger picture issues when considering the proposed projects in the CERF programme, including the impacts of intensification in the Board area. In its submission on the Draft Greater Christchurch Spatial Plan, the Board noted that the wider community (and Board) believe that the community infrastructure may not be adequate to support the continual growth in the Board area. The Board promoted that community concerns include the lack of amenities, community facilities and recreational greenspace, and the impact intensification will have on transport corridors and connecting transport networks. The Board encouraged partnering with the community to address these concerns, including in the context of the Plan, as important to finding dynamic and innovative solutions that bring residents on the journey. Board member assistance to residents to promote reporting issues through the Snap Send Solve app, including as highlighted in public forum presentation from Rhonda Ballantyne (April 2023). The Board received a public forum presentation in February 2024 from Te Kura o Matarangi Northcote School regarding traffic and parking issues in the Northcote area with current construction projects and concerns about the impact of the opening Marian College on these issues. The Board noted advice from staff of their ongoing investigations into traffic volumes in the area now that Marian College students are back, indicating appropriate measures are to be recommended to the Board in due course. The Board received deputations, including from Shirley Primary School students, providing local feedback on the proposals the Board approved for safety improvement as part of the transport project to create 'Way safer intersections on Shirley Road': https://www.ccc.govt.nz/transport/improving-our-transport-and-roads/transport-projects/shirleyroad/. The Board's LTP 2024-34 submission noted what it signalled in its Board Plan about taking a 'big picture' view of local transport issues, acknowledging that it is a balance between supporting fiscal prudence when it comes to Council spending and recognising/advocating for what the community sees as important transport issues and/or projects. Police were invited to attend the liaison meeting in June 2024 with school principals in the Board area, and referred the issues raised by St Albans School at the May 2024 Board meeting. The Board supported the local Northcote community in the advancement and resolution of appropriate parking restrictions for Fenchurch Street and Paddington Street at its meeting on 11 July 2024 after hearing from local residents, in response to the evolving local transport issues relating to the recent move of Marian College into the area and other developments. At the Council's LTP 2024-34 meeting it recorded this noting provision further to the Board's interest in advancing this project: <i>A303b. Staff will report to the Community Boards by December 2024 on feasibility progress on #243 Greers, Northcote and Sawyers Arms Intersection Improvement to inform future timelines.</i> 	<ul style="list-style-type: none"> Monitor the number of grants approved through the Better off Fund supporting transport safety initiatives.
<ul style="list-style-type: none"> Where appropriate partner with external agencies and through the provision of the Better off Support Funding to support transport safety initiatives in our board area. 	<ul style="list-style-type: none"> The Board in May 2023 discussed local policing issues with Snr Sergeant Roy Appley from the NZ Police, including raising relevant community concerns about transport safety in the Board area. The Board was briefed on the criteria relating to the Community Board Better-Off Funding in August 2023, and began workshopping prospective projects in October 2023. The Board wrote to Waka Kotahi in August 2023 at their invitation to give feedback on where the community desire or would support a review of speed limits on the State Highway, in which it reflected community feedback into the Safe Speed Neighbourhoods project concerning reviewing the speed on QEII Drive between Northcote Road and the CNC. The Board's LTP 2024-34 submission advocated that: <i>The Board believes there is an urgent need relating to the Northcote Road corridor being investigated for improvement. Both the wider and local community have communicated their concerns about the adverse impacts resulting from recent developments, including the opening of a very large supermarket and school, together with increased traffic in the area generally. The Board is concerned that the draft LTP is showing significantly reduced investment for improving this corridor (project 915). The Board appreciates that the nature of any project will need to be informed by investigations, but advocates for some funding/resourcing to be able to act on these, and should at least be noted in the LTP and be included in an Annual Plan.</i> <i>The Board refers to the deputations of St Bede's College and Marian College students to its 11 April 2024 meeting (recorded on its YouTube channel here: https://www.youtube.com/watch?v=tdktSPxnyrA) outlining their traffic safety concerns for the area surrounding their schools. The</i> 	<ul style="list-style-type: none"> As above.

A Connected Transport Network in Papanui-Innes-Central (road, cycleways, paths)		
	<p><i>Board, responding to such local insight, has approved Better Off funding for a Northcote Road Corridor Safety Improvements Investigation that it could expect to be seeking the Council's support with to implement resulting recommendations, intending these be considered in further conversation with the students and community.</i></p> <ul style="list-style-type: none"> • Around the presentation to the Board from St Albans School at its 9 May 2024 meeting regarding the safety of children travelling to and from the school, endeavours to reach out to Police about related enforcement issues, yielded indication from Snr Sergeant Mike Jones on 16 May 2024 that he would raise in their taskings either a patrol or for team operations to run at the Cranford Street/Westminster Street intersection at the start of school time. • At the Council's LTP 2024-34 meeting it recorded this noting provision further to the Board's interest in advancing this project: <i>A103a. The feasibility work for #915 Northcote Road Corridor Improvement (Concept) is being undertaken in FY24/25.</i> 	
<ul style="list-style-type: none"> • Support active transport initiatives that promote walking, cycling, and using public transport. 	<ul style="list-style-type: none"> • In its submission on the 'Way Safer Streets' consultation, the Board noted its fundamental support for active transport initiatives that promote walking, cycling and using public transport, and offered feedback in response to consultation questions on the particular proposed CERF projects in the Board area. • The Board, in its submission on the Council's Annual Plan 2023/24 advocated that priority be given within existing programmes to advancing projects where possible reflecting the Board's priorities, including specifically active transport initiatives that promote walking, cycling, and public transport. The Board expressed particular support for retaining priority for: Project 47023 (Major Cycleway Route - Northern Line - from Sturrocks Road to Barnes Road and Main North Road); Project 64671 (Major Cycleway - Northern Line Route [Section 1] Railway Crossings); Project 44702 (Package of local cycleways along the northern section of the Outer Orbital, linking the Northern Line and Avon - Otakaro Route. Includes Barnes Rd, Main North Rd, Prestons Rd, Burwood Rd and New Brighton Rd); Project 23098 (Northern Line - Blenheim Rd to Restell St) Harewood Road crossing being constructed as soon as possible; Project 23101 (Nor'West Arc Stage 3) being constructed as soon as possible. • Public Forum presentation from Dave Gardner (April 2023) expressing thanks in relation to safety improvements for the shared path on Cranford Street. • The Board considered active transport components within the Innes Road Street Renewal project at its August 2023 meeting. • The Board highlighted in its presentation to Council in October 2023 its prioritisation of a connected transport network, including as relating to providing a connection to the CNC shared path at Redwood Springs. • The Board supported the installation of paths in Papanui Bush promoting walking in the bush and the enjoyment of the area. • The Board's LTP 2024-34 submission advocated that: <i>The Board, furthermore, appreciates and supports the provision for completing the Northern Line MCR cycle connections, reflecting that we signalled in our Board Plan we would support active transport initiatives which promote walking, cycling, and using public transport. The Board also references its previous submission in support of the Wheels to Wings cycleway, which we reaffirms here. The Wheels to Wings cycleway has been through two rounds of public consultation, a hearings panel process, and the scheme design has been approved by the Council. The Council has a long-standing commitment to deliver the cycleway, and it would not be unreasonable for elected members and the community to expect the LTP to be very clear that it can be delivered.</i> <p><i>Further relating to the Northern Line, the Board is especially keen to ensure there is scope to bring work forward (should it be possible with respect to requiring Kiwirail clearance) on signalised crossings for Harewood and Langdons Road by the railway crossings. There is consistent community demand to see these implemented as soon as possible, especially from parents concerned for the safety of their children. They and local school principals have indicated to the Board that this cycleway is especially relevant to encouraging and supporting tamariki to regularly cycle, which would increase the likelihood they will carry into adulthood this contribution to lowering transport emissions and improving their own health and wellbeing.</i></p> <ul style="list-style-type: none"> • The Council's letter of response to the Board after the adoption of its LTP noted its commitment to \$17.574 million for all three stages of the Wheels to Wings cycleway, and \$26.473 million to complete all aspects of the Northern Line cycleway noting funding is phased from Financial Year 25 to 28, with the bulk of delivery bought forward to 2025/26 for the rail crossings at Harewood Road, Langdons Road, and Sawyers Arms Road, subject to KiwiRail resource availability). • In its submission on the Regional Public Transport Plan, the Board commended improvements made by ECan to the bus service, and provided comments on the Plan's vision relating to: improving our environment, growing patronage, innovation and technology accessibility, affordability, pets on public transport, and the planned improvements for Greater Christchurch. Under this last heading, the 	<ul style="list-style-type: none"> • As above.

A Connected Transport Network in Papanui-Innes-Central (road, cycleways, paths)		
	<p>Board suggested a focus on urgently increasing service for the northern express bus, developing park and ride facilities at the top of the CNC, and utilising current rail infrastructure. It particularly highlighted that: <i>With the planned improvements clearly laid out by ECan, showing the MRT plans are a long-term focus pushing out as far as 30 years into the future, the board suggests the need to address the growing amount of transport (private, business and heavy freight) in our area urgently needs short term planning. This is as much required for amenity and safety as it is to effectively start addressing the climate emergency.</i></p> <ul style="list-style-type: none"> The Board recommended the Council approve the peak-hour bus lane on Cranford Street remain a bus lane, after considering the submissions and deputation on the improvements for Cranford Street (between Innes Road and Berwick Street). 	
<ul style="list-style-type: none"> Advocate for a trial of a central city shuttle. 	<ul style="list-style-type: none"> The Board, in its submission on the Council's Annual Plan 2023/24 advocated that priority be given within existing programmes to advancing projects reflecting the Board's priorities where possible, including specifically a trial of a central city shuttle. The Board's LTP 2024-34 submission noted that: <i>The Board advocates for a trial of a central city shuttle as flagged in its Board Plan, drawing from its understanding of community interest in such a service, and noting it as a great gateway initiative to bringing more people to the central city, being more inclusive of those with accessibility issues, and helping people to become more accustomed to using public transport as a lower emission travel choice, also reducing the amount of cars into, out of, and around the CBD.</i> <i>Additionally, with so many significant changes to the inner city – new buildings (e.g. the library, the soon to be opened Court Theatre, Riverside, and a number of large hotels across the CBD), a shuttle should make it easier for people to travel around the inner city and have a positive experience. This can only further help promote the city as a great place in which to work, live, play and visit. The Board again refers to the early engagement on 'what matters most', which reflected that travel choice is high among residents' priorities in the Central ward, being among the top two, along with climate change.</i> In its submission on the Regional Public Transport Plan, the Board noted that it would like to see the introduction of a free circuit service to Christchurch Central (similar to the yellow shuttle which looped the CBD pre-earthquakes). It offered a number of points in support, including that: <i>The transport plan should be cognisant of the need to efficiently move residents, workers and visitors in, out and around the CBD. This is key to reducing congestion, improving the flow of traffic and people, reducing parking demand and enabling safe movement for all people.</i> On 12 February 2025, the Council resolved in respect of the proposed Draft Annual Plan 2025-26 that it: <i>Consults on allocating up to \$200,000 for a scoping study for a Central City Shuttle Service in the draft 2025/26 Annual Plan.</i> 	<ul style="list-style-type: none"> The inclusion of funding for a central city shuttle, and the start of this service.

Priority two

The Implementation of Safety Initiatives across Papanui-Innes-Central		
What the Board will do	Progress to date/actions taken	Measures of Success
<ul style="list-style-type: none"> Continue to engage with the community and support the community to develop local solutions to address safety concerns. 	<ul style="list-style-type: none"> Public forum presentations received relating to community safety and promotion of community patrols, particularly public forum presentation from Leon Lee (May 2023). Police's Crime Snapshot at this website (https://www.police.govt.nz/crime-snapshot) provides further insights on broad trends, with more detailed reports from the Police stats data tool at this website (https://www.police.govt.nz/about-us/publications-statistics/data-and-statistics/policedatanz). The data tool shows that within the Board area (the relative boundaries not matching exactly, but focusing within it) the trend for victimisations between May 2023 and August 2023 tracked steadily down, up slightly in September 2023, plateauing to October 2023, dropping in November 2023, and coming back up moderately in December 2023. In that overall period victimisations were tracking down. The Board is supported to encourage and educate community reporting to Police, assisting Police intelligence through the 105 and 111 numbers, and helping the community to understand when to use which and the importance of reporting. The Board's LTP 2024-34 submission advocated that: <i>The Board also recognises the many ways, not always apparent, in which community funding, development and resilience are integral to retaining a safe and thriving city that is prepared for dealing with possible adversity. The</i> 	<ul style="list-style-type: none"> A visible reduction in crime was reported on the New Zealand Police stats data tool.

The Implementation of Safety Initiatives across Papanui-Innes-Central		
	<p><i>Council, by far, does not do all the 'heavy lifting' in the city to make it a great place to live; much of that work is community-led, though greatly in need of the Council maintaining its funding support for the groups and organisations on the ground who do the mahi.</i></p> <p><i>As previously mentioned, this work is not always apparent but is an essential and fundamental social glue that's key to supporting our wellbeing as citizens – an important part of our social cohesion being reliant on the collective efforts of these volunteers and organisations.</i></p> <ul style="list-style-type: none"> The Board at its June and July 2024 meetings decided to recommend the Council request staff investigate new alcohol ban areas in Edgware Village and around the norther section of Stanmore Road, supporting community requests to explore this avenue of addressing safety concerns around aggressive begging behaviours being reported in these local shopping centres. 	
<ul style="list-style-type: none"> Advocate for short- and medium-term solutions to address youth safety issues at Northlands Shopping Centre and the surrounding area. 	<ul style="list-style-type: none"> In its submission on the Council's Annual Plan 2023/23, the Board advocated that priority be given within existing programmes to advancing projects relevant specifically to matters that included addressing youth safety issues at Northlands Shopping Centre and the surrounding area. The Board workshopped initiatives to create solutions to address youth safety issues at Northlands Shopping Centre through its Better Off Fund. When the Youth Community Safety Project through the Board's Better Off Fund was presented in February 2024 (and approved by the Board at that time for funding), it noted the success of a pilot project run in the proximity of Northlands Shopping Centre and Papanui High School to address youth safety issues through providing presence-based youth work in the area. At the conclusion of the pilot, the key stakeholders agreed on creating a long-term plan to continue the project and identified the below opportunities: <ul style="list-style-type: none"> Professional development for security and interested retail staff on 'positive youth development'. Receiving access to the outdoor/indoor space that was previously a Pizza Hutt restaurant for use as a youth hub space for young people to safely congregate when waiting for the bus. Greater/wider stakeholder involvement including having the Papanui Police staff visit the Mall more frequently. With the support of the Better Off funding from the Board, the youth hub space has now been opened in Northlands Mall near the bus terminal, building on the successes of the pilot project, and providing meaningful presence-based youth work and an alternative space for young people to use while transitioning from school, through the mall and making their way home. 	
<ul style="list-style-type: none"> Engage with the Police to meet regularly to discuss any safety concerns in the board area. 	<ul style="list-style-type: none"> The Board discussed local policing issues with Senior Sergeant Roy Appley of the NZ Police in May 2023, including raising relevant community concerns about transport safety in the Board area. Staff continue to support the Phillipstown Safety Panel with the Phillipstown Community Policy Team. The Police were invited to hear the community safety concerns for Edgware Village at the 9 May 2024 meeting, and their views sought in relation to the request for an alcohol ban for the area. Public forum presentations received from Edgware business owner and Richmond Residents and Business Associations at May and June 2024 meetings relating to aggressive begging issues in Edgware Village and the northern section of Stanmore Road respectively, where the presenters were in each case requesting the process for investigating alcohol bans for the areas to be initiated. Police attended with the Board at their liaison meeting with school principals in the Board area on 7 June 2024 to share their work and hear local school feedback on safety and policing issues. Police views were sought and supplied in relation to the request of Richmond Residents and Business Association for an alcohol ban around the northern section of Stanmore Road. Brainstorming session held in July 2024 with Police, the Community Governance Team and Board Chair in relation to youth safety initiatives following the feedback from principals at the liaison meeting on 7 June 2024. The Board discussed local policing issues with Senior Sergeant Roy Appley of the NZ Police in October 2024. 	<ul style="list-style-type: none"> Track safety concerns raised through a public forum, correspondence, or engagement, and articulate the concerns to the Police during regular meetings.
<ul style="list-style-type: none"> Where appropriate, partner with government agencies, local businesses, and the community to support safety and 	<ul style="list-style-type: none"> The Board undertook a site visit to the Real Time Operations centre in June 2023 to understand their work, including the interface with the Crime Prevention Camera Network operated by the Police. 	

The Implementation of Safety Initiatives across Papanui-Innes-Central		
<p>crime prevention initiatives in our board area.</p>	<ul style="list-style-type: none"> Community Governance staff are engaging with Kāinga Ora and Shirley Community Trust around social housing in the Shirley area and its layout as relating to supporting community safety. The Board's LTP 2024-34 submission noted that: <i>These prioritisations from the Board Plan have been developed in conversation with the community, and out of the Board's experience of the need for these initiatives to support creating safe places to live. The Board is grateful for being able to effectively support our community through the continued funding of community grants and community development which facilitate a large number of groups and projects, to help address the issues that have required these initiatives.</i> At its June and July 2024 meetings, the Board approved trials of working with the external agencies to address the underlying social issues in Edgware Village and around the northern section of Stanmore Road, including the aggressive begging of particular concern to these communities, which had led to the local requests for alcohol bans in the areas. At its October 2024 meeting, the Board received a public forum from Shirley Village Project regarding the Crime Prevention Through Environment Design (CPTED) report that the Board commissioned for MacFarlane Park. The Board requested that staff investigate the approximate cost of replacing the public toilets in MacFarlane Park that the CPTED report recommends for renewal as a high priority. 	
<ul style="list-style-type: none"> Advocate that Crime Prevention Through Environmental Design (CPTED) principles are considered on appropriate projects. 	<ul style="list-style-type: none"> Advocacy through presentation to Council at its June 2023 meeting including a slide highlighting the Board's Community Policing, CPTED, CCTV & RTO Dialogues, specifically noting that the Board's prioritisation of safety initiatives relies on the Council to champion and support CPTED being resourced. Opportunities for CPTED funding for Shirley Community Reserve and MacFarlane Park have been developed through Better Off funding, and provision for CPTED reports for both approved by the Board at its February 2024 meeting. CPTED principles are being considered for Petrie Park through the development of its landscape plan. A CPTED Plan for MacFarlane Park, funded with the Board's Better Off Fund, has been produced by Boffa Miskell, who were engaged by the Community Governance Team to develop one, and workshopped it with the Shirley Community. The Community Governance Team is coordinating with relevant Council teams to work through the CPTED recommendations in terms of aspects that may be achievable within current budgets, and the Board has received the CPTED report to review in terms of other aspects that may be advanced through their advocacy. The Community Governance Team is also in discussion with Kāinga Ora and Shirley Community Trust around aspects that may be advanced through their partnership endeavours. The Board Chairperson highlighted to the Council meeting on 6 November 2024 the CPTED report for MacFarlane Park and that Shirley residents have drawn attention to the key finding that the toilets should be replaced/renewed as a high priority and highlighted mural designs they hope to add to a new toilet building. 	
<ul style="list-style-type: none"> Continue to provide community investment through the provision of funding to support community groups addressing harm-reduction initiatives. 	<ul style="list-style-type: none"> The Board was briefed on the criteria relating to the Community Board Better-Off Funding in August 2023. The Board considered its Strengthening Communities Funding in August 2023, giving it the opportunity to support community groups with initiatives, including those relating to harm-reduction. Aratupu Preschool – DRF funding for Aratupu Preschool and Whānau Hub Emotional Regulation Programme. In the Papanui-Redwood area staff continue to support a set of community organisations actively collaborating in wraparound safety and harm-reduction initiatives, which the Board fund through the DRF. The Board in February 2024 made a Better Off Fund grant for a Youth Community Safety Project. This project is to support a youth safer community initiative – a collaboration between groups to provide an environment that reflects a safe, inclusive, and caring culture that aligns with community values – building pro-social behaviour and a sense of belonging, collaboratively keeping our communities safe and calm and reducing crime. Partners include Papanui Youth Development Trust, Northlands Mall, Te Ora Hou, New Zealand Police and Christchurch City Council. 	<ul style="list-style-type: none"> Monitor the number of grants approved through the Better off Fund supporting community safety and crime prevention initiatives.
<ul style="list-style-type: none"> Continue to support and strengthen the ongoing partnership with Community Patrols. 	<ul style="list-style-type: none"> Promotion of Christchurch North Community Patrol through the Board's June Area Report and Newsletter. Support provided to the Christchurch North Community Patrol through Strengthening Community Funding approved by the Board in August 2023. 	

The Implementation of Safety Initiatives across Papanui-Innes-Central		
	<ul style="list-style-type: none"> Support provided to City Park Community Patrol through Discretionary Response Fund grant approved by the Board in September 2023 toward first aid training for volunteer crews, uniform monograms and volunteer recognition. The Community Governance Team maintain a relationship with the patrols and review their statistical information available on their website at: https://database.cpnz.org.nz/stats. The Community Governance Team contacted the relevant community patrol to discuss the safety concerns for Edgeware Village from the public forum presentation on 9 May 2024, highlighting what the local businesses report, and asking if this area could receive increased attention. The Community Governance Team also made relevant inquiry with the community patrol to inform work on the report receiving and processing the request of Richmond Residents and Business Association for an alcohol ban around northern Stanmore Road, noting the aggressive begging activity in the area of concern to the local residents and businesses. 	

Priority three

The Revitalisation of Petrie Park		
What the Board will do	Progress to date/actions taken	Measures of Success
<ul style="list-style-type: none"> Work with the community to realise the vision for the park. 	<ul style="list-style-type: none"> The Board received a briefing in July 2023 from Richmond Community Garden / We Are Richmond as the group doing the mahi in partnership with the Council's Parks team. The Board highlighted to the Council meeting in September 2023 the presentation it received on community mahi toward the revitalisation of Petrie Park, noting the vision that the southern half of the park undergo a land use change from bowling green to a park that best serves the local community and biodiversity. The Richmond Residents and Business Association has undertaken soil testing (finding high levels of arsenic, traces of DDT in the top soil and asbestos) engagement with the surrounding houses and local community, initial history and visual boards have been finished and displayed in the park, a transitional planting display was planted and a community day was held in November 2023 for people to come along see the planting, share some kia and give feedback on the Richmond Residents and Business Association landscape plan. The Board received and fed back on an update from the community partner on Petrie Park project at its 23 May 2024 information session/workshop, which explored the proposal for the park they intend to engage with their community on. We Are Richmond's work on the murals for Petrie Park have been promoted through the Area Report, and monthly presentations to the Council. 	<ul style="list-style-type: none"> The community will have a safe space, enhancing well-being and providing a place for social connection.
<ul style="list-style-type: none"> Advocate for the Ōtautahi Christchurch Climate Resilience Strategy and the Ōtautahi Christchurch Urban Forest Plan to be considered in the vision. 	<ul style="list-style-type: none"> The Board supported the Ōtautahi Christchurch Urban Forest Plan through its submission on the Plan. The Strategy and Plan were shown to be supported by the vision of the community organisations undertaking the mahi in partnership with the Council's Parks team. The CCC Urban Forest Team have highlighted that Petrie Park is to be included in the next Urban Forest Planting Schedule and budget is secured. As a result of this, CCC Urban Forest will cover the cost of purchase, planting, and looking after the Trees for the first 7 years then maintenance will go into the wider council expenditure. 	<ul style="list-style-type: none"> The revitalisation will support the goals of the Ōtautahi Christchurch Climate Resilience Strategy and the Ōtautahi-Christchurch Urban Forest Plan.
<ul style="list-style-type: none"> Explore partnership opportunities to support the community fulfil its vision for the park 	<ul style="list-style-type: none"> The Board conducted a site visit to Petrie Park with the Council Parks Team as part of its bus trip in January 2023 to understand the issues and opportunities relevant to supporting the community fulfil its vision for the park, and also visited Richmond Community Garden at that time and met with the group relevant to the work being done across the area. The Board received a further update on the mahi toward the revitalisation of Petrie Park from the Residents and Business Association Chair in September 2023. 	<ul style="list-style-type: none"> If required, any necessary land use changes are approved.

The Revitalisation of Petrie Park		
	<ul style="list-style-type: none"> CCC Urban Forest have engaged Boffa Miskell who will work on Landscape design at Petrie Park. Agreement has been reached that the Richmond Residents and Business Association current Landscape Architect will work together with Boffa Miskell to develop a combined plan that will be earmarked for public consultation. The Petrie Park tree planting plan consultation went live on 21 February 2025. There was a community BBQ in the park on 23 February 2025 where staff talked to locals about the tree planting plan. 	
<ul style="list-style-type: none"> Advocate that Crime Prevention Through Environmental Design (CPTED) principles are considered in the project. 	<ul style="list-style-type: none"> Advocacy through presentation to Council at its June 2023 meeting including a slide highlighting the Board's Community Policing, CPTED, CCTV & RTO Dialogues, specifically noting that after consulting with the community, the Board incorporated within its Board Plan the request that CPTED principles are considered for the revitalisation of Petrie Park. Arrangement has been reached through the partnership developing the landscape plan for the project for it to also consider CPTED principles. In respect of funding for a CPTED Report on the Park (highlighted as a possible separate Better of Funding project) the Urban Forest team noted that it would be difficult to complete a CPTED Report as the trees would be small for a number of years and as part of the Landscape Design CPTED issues can be ameliorated by a number of factors, such as planting at least three metres away from fence lines allows mowing but also restricts areas to hide for offenders. Highlighted areas of bush or trees that present problems can be removed as part of the initial landscape plan for example the vegetation along pathway that now exists. Better Off funding has been secured for this work and removal of vegetation. 	<ul style="list-style-type: none"> CPTED principles are applied to the project.
<ul style="list-style-type: none"> Advocate and support the project through decision making opportunities. 	<ul style="list-style-type: none"> The Board, in its submission on the Council's Annual Plan 2023/24 advocated that priority be given within existing programmes to advancing projects reflecting the Board's priorities where possible, including specifically revitalising Petrie Park. The Board in February 2024 approved funding from its Better Off Fund for Petrie Park remediation, planting, and revitalisation. The Board's LTP 2024-34 submission advocated that: <i>An example of the importance of maintaining the funding to partner with our community is the work being undertaken on the revitalisation of Petrie Park. The local community group, in conversation with residents, is doing amazing mahi to activate this space and the Board continues to support them to fulfil the vision for the park.</i> <p><i>We would strongly indicate that the support this community receives through board funding, and the time and expertise of the Parks Unit which is critically important, should not be compromised by any aspect of the LTP. The project is an exemplar of what community can do, and how it can be made better, just by maintaining responsible, socially conscious levels of spending.</i></p>	<ul style="list-style-type: none"> Petrie Park will be revitalised to mirror the community vision.

Priority Four

Phillipstown Community Hub		
What the Board will do	Progress to date/actions taken	Measures of Success
<ul style="list-style-type: none"> Advocate for a permanent home for the Phillipstown Community Hub. 	<ul style="list-style-type: none"> The Board advocated in its submission on the Council's Annual Plan 2023/24 that priority be retained for Project 69275 (To design and build a new Community Centre for the Phillipstown community). As supported by the Board, the funding for a Phillipstown Community Centre (Project 69275) has been retained in the Council's Long Term Plan 2024-34, with \$245,000 set aside in 2029/30 and \$3,458,000 set aside in 2030/31. 	<ul style="list-style-type: none"> The Hub has a permanent home and can continue to grow to support the needs of the Phillipstown and Charleston communities.
<ul style="list-style-type: none"> Bring forward funding in the LTP to support a land purchase, if required. 	<ul style="list-style-type: none"> The Board Chair in the LTP briefing to Council in October 2023 highlighted priority to retain funding. The Board's LTP 2024-34 submission advocated that: <i>In regard to prioritisation in the Board Plan of Phillipstown Community Centre (project 69275), there appears no clear requirement to bring funding forward at this time to support a land purchase. However, this may be relevant to an Annual Plan depending on the Ministry of Education's decision in regard to the land occupied by Phillipstown Community Hub. It is vital though that the current funding in this project be retained as an investment in maintaining this heart to the community.</i> 	<ul style="list-style-type: none"> Funding is brought forward in the LTP for a land purchase.

Phillipstown Community Hub		
<ul style="list-style-type: none"> Advocate for the continuation of the Phillipstown Community Hub and future growth. 	<ul style="list-style-type: none"> Letter of Support from the Board (dated 26 April 2023) to the Ministry of Education in support of the Phillipstown Community Centre Charitable Trust's request to extend their lease of the Phillipstown Community Hub. At the Board meeting in April 2023, the Phillipstown Community Hub Manager addressed the Board to thank it for the grant towards the rebuild of the pizza oven at Phillipstown Hub and displayed a presentation of the work and finished oven. The Board received a public forum presentation from the new Hub Manager in October 2023, assisting to form this new relationship, as well as the engagement with them through the community liaison meeting in September 2023. In February 2024, the Board provided a grant through its Better Off Fund to continue to work alongside Phillipstown Community Centre Charitable Trust to develop community response plans, setting out how, as an organisation, they can respond and support their community in an event. Funding will provide the group the ability to purchase equipment and items to help deliver their community response plans and build resilience in their communities when there is an event. 	<ul style="list-style-type: none"> Action is taken to support the ongoing continuation of the Hub.

Priority Five

Flooding in the Papanui-Innes-Central Board		
What the Board will do	Progress to date/actions taken	Measures of Success
<ul style="list-style-type: none"> Advocate for the prioritisation and inclusion of required flood mitigation projects by identifying in the Board submission what options for flood mitigation represent the best value for money, prioritising community safety and wellbeing while recognising that some street flooding in significant rain events is part of a functional drainage network that avoids inappropriately creating property flooding downstream. 	<ul style="list-style-type: none"> The Board in respect of its submission on the Council's Annual Plan 2023/24, was expressively responsive to the efforts that had been applied in that process to keep the rates increase to a minimum without compromising on the levels of service. Recognising the cost-of-living crisis, against the background of the staff reporting to Council in September 2022 and April 2023 around the city-wide approach being taken to the prioritisation of flood mitigation projects, the Board supported existing programmes of work so as to avoid a rates impact, and so supported the Council in its programmed flood mitigation projects at that time. In its submission on the Draft Greater Christchurch Spatial Plan, the Board advocated that the Plan should be cognisant of the risk of flooding in the Board area that intensification may further exacerbate, noting community concerns, particularly around St Albans/Edgeware, Shirley, and the Cranford Basin development area. In this context, the Board strongly recommended that additional flood mitigation is considered in new developments to ensure existing networks are not overwhelmed and remain effective in significant rain events. The Board's presentation to the Council hearings on its draft LTP 2024-34 highlighted: <i>The proposal to establish a programme to reduce regular surface flooding is important to identifying which options for flood mitigation represent the best value for money. These should be considered for the streets near MacFarlane Park, St Albans Park, Edgeware Village, and others particularly affected in the 2022 rain events.</i> 	<ul style="list-style-type: none"> The inclusion of flood mitigation projects in the LTP.
<ul style="list-style-type: none"> Advocate for a community adverse-weather resource which will be available for residents to download showing what flooding plans are already in place, what would trigger a Civil Defence response, and what the responsibilities of other government agencies are. 	<ul style="list-style-type: none"> The Board, in its submission on the Council's Annual Plan 2023/24 advocated that priority be given within existing programmes to advancing projects reflecting the Board's priorities where possible, including specifically this project. Board staff have met with Civil Defence staff in respect of understanding and relating appropriately to current resources, examples of community-led resilience plans, combined council unit adverse weather resource planning and ensuring clarity of information channels during events. Board staff in consultation with Civil Defence staff have developed a Severe Weather Readiness Resource for the Board area, attached to the October 2023 Area Report, which is available on the Board's webpage for residents with information relevant to engaging with community groups interested in developing emergency response plans, and encouraging residents to connect with those groups, while informing them where to access best information about flooding and severe weather events. 	<ul style="list-style-type: none"> Residents will be well informed and understand the flooding response in their area, and where they can find information about what may be planned or is outside the scope of work.
<ul style="list-style-type: none"> Advocate for a resource that helps communities understand what to do, what not to do, and support them more generally in flood events. 	<ul style="list-style-type: none"> The Board made connection with the local Community Resilience Coordinator at its meeting in February 2023 to understand their role, and the background with Civil Defence Emergency Management (CDEM) helping communities to establish resilience and respond appropriately in emergencies, including in flood events. 	<ul style="list-style-type: none"> The creation of a resource to assist the community in responding to flooding and measure the number of downloads.

Flooding in the Papanui-Innes-Central Board		
	<ul style="list-style-type: none"> Included in the Severe Weather Readiness Resource developed for the Board area is question and answer information on what to do in flood events, Civil Defence information on getting ready for events, and links to reliable sources of information to point residents toward current updates relating to particular events. Resilience Plans to be developed in partnership with key community groups for the wards are being funded through the Board's Better Off Fund. The Board's presentation to the Council hearings on its draft LTP 2024-34 highlighted: <i>With climate change severe weather is expected to become more frequent. It is essential we prepare and defend our community and adapt to the changing climate by prioritising our capacity to respond to emergency events and build up our resilience in the face of the challenges ahead.</i> 	
<ul style="list-style-type: none"> Advocate for mitigation options to be considered ahead of significant rain events especially around, but not limited to, Francis Avenue, Edgware Village, Emmett Street, and Harris Crescent. 	<ul style="list-style-type: none"> The Board has referred relevant actions to staff through its meetings requesting a briefing regarding areas of surface flooding in significant rain events noted by the Board: Cambridge Terrace, Emmett Street, Francis Avenue, Edgware Village and Harris Crescent, and particularly an update on progress with information for the Board and residents relevant to the flooding mitigations in the vicinity of Francis Avenue and on the process for pump activation. The Board's LTP 2024-34 submission noted that: <i>While the Board supports finding spending efficiencies, it would not see any creation of risks of property flooding through this, or of being under-prepared for emergency responses to severe weather, as a more broadly efficient. The Board highlights the distress such events cause the community, and the vital importance of mitigating this distress and risk by maintaining what residents expect in terms of investing in flood response, such as the ability to deploy temporary pumps, road closures, civil defence emergency management personnel/resources, and other modes of preparedness developed through community resilience initiatives.</i> The Board reiterated its advocacy for flood mitigation options in its submission on the Ōtākaro Avon Stormwater Management Plan. The Council's Long Term Plan 2024-34 added a Surface Flooding Reduction Programme to fund flooding mitigation projects city-wide, which surfacing flooding in significant rain events in Francis Avenue, Edgware Village, Emmett Street, and Harris Crescent, can be assessed for. The Council's letter of response to the Board after the adoption of its LTP noted its commitment to \$183.243 million for the surface flooding reduction programme. At an information session with Three Waters in October 2024, the Board sought clarity regarding the work of the operations teams in stormwater and maintenance around effective responses to surface flooding not involving infrastructure, such as deploying temporary pumps, road closures, and localised communications in events. The Board received follow up clarifications and reassurances, including that: <i>During significant wet weather and flooding events staff from our Transport, Three Waters, and Civil Defence and Emergency Management teams are available round the clock to respond to issues. They're also out and about keeping an eye on our roads and infrastructure.... It is also important to note that our road network is part of our stormwater network and plays an important role during wet weather events. In most parts of the city our roads have been designed as secondary flow paths for stormwater. This provides another layer of protection for houses across our district. In heavy rain we expect to see some of our roads flood with water. This is better than houses or property flooding.</i> 	<ul style="list-style-type: none"> The number of temporary pumps deployed during a rain event and frequency.
<ul style="list-style-type: none"> Advocate that all residential and commercial impacts are considered when flood mitigation projects are being considered, including in setting levels of service. 	<ul style="list-style-type: none"> Awaiting Council to consider specific flood mitigation projects in the Board area. In September 2022 in relation to Flood Management Options for Edgware Road at Edgware Village, the Council resolved to: <ol style="list-style-type: none"> Continue with and extend the engagement with the local community, including business owners, over flooding matters including providing advice to assist property owners in taking their own measures to reduce the impacts of flooding on their properties; Rely on the District Plan floor level controls to provide the most certain means to reduce flood risk to buildings in Edgware Village over time; Update the costs of the engineered option in advance of the next Long Term Plan (LTP), giving consideration to other options, levels of service, Council policy and the occurrence of similar flooding in other parts of the city as part of consideration of potential LTP candidates; Consider construction of a full height kerb as part of the ongoing Edgware Village Master Plan work; and Request staff to prepare a report on surface flooding across urban Christchurch and recommend potential stormwater projects for consideration in the Annual Plan. 	

Flooding in the Papanui-Innes-Central Board		
	<ul style="list-style-type: none"> Resolution (2) confirmed as being given effect through the established Council planning processes which will ensure that the floor level controls will continue to be maintained through the District Plan provisions. The Board's LTP 2024-34 submission advocated that: <i>The Board specifically requests that it be investigated whether flood mitigation levels of service are inappropriately excluding non-residential properties, having witnessed the impact on Edgware Village and the community who use it from the 2022 significant rain events. Currently Council staff are limited in their response options when flood waters inundate or threaten commercial premises because there are no levels of service for such an event. This urgently requires addressing by council, in deciding the levels of service for commercial properties.</i> At an information session with Three Waters in October 2024, the Board sought clarity regarding what a level of service as may be submitted on could look like in relation to addressing surface flooding affecting commercial properties that could be aimed at a level that may be usefully investigated and debated. The Board received follow up clarification that: <i>Establishing a level of service (LoS) to mitigate surface flooding of commercial properties could require substantial funding from the Council. Any recommendation on an appropriate level of service must be backed by a comprehensive analysis of the financial implications.</i> <i>This would require an in-depth assessment to assess the impact of such a LoS would have. It would be recommended that such a study looks at various LoS options, including the current LoS that applies to residential areas. There is currently no funding to conduct such a study.</i> 	
<ul style="list-style-type: none"> Advocate that the Council continues to investigate the use of permeable surfaces/rain gardens where applicable. 	<ul style="list-style-type: none"> In its submission on Plan Change 14, the Board signalled that it will be advocating through the Long Term Plan and other such avenues for the retention of greenspace as parks, pocket parks, or gathering spaces for community use, and to advocate that planning changes support that flood mitigation is considered in new developments to ensure existing networks are not overwhelmed and can remain effective in significant rain events. The Board in its submission on the Draft Greater Christchurch Spatial Plan advocated that planning be holistic and not overlook opportunities for stormwater management, including investigation of the use of permeable surfaces/rain gardens where applicable. The Board met with the City Streets Maintenance Manager early in 2023 to gain a wider understanding road and footpath surfacing. The Board's LTP 2024-34 submission noted this intent to advocate that the Council continues to investigate the use of permeable surfaces/rain gardens where applicable. 	
<ul style="list-style-type: none"> Re-engage with business owners and residents to see what is required from the Edgware Village Master Plan looking at streetscape improvements in Edgware Village. 	<ul style="list-style-type: none"> Regarding Council resolution that to consider construction of a full height kerb as part of the ongoing Edgware Village Master Plan work, this was recorded by Three Waters as actioned through notification given to the Transport Unit in December 2022, of the need to consider full height kerb incorporation in the Master Plan work. Regarding Council resolution to continue with and extend the engagement with the local community, including business owners, over flooding matters including providing advice to assist property owners in taking their own measures to reduce the impacts of flooding on their properties, this has been actioned including community meetings on 14 and 15 November 2022. There was provision in the Annual Plan 2023-24 for streetscape in Edgware Village Masterplan. However, Master Plan funding was subject to the Council's review of its capital programme as part of the draft LTP 2024-34 consideration process, and the Council has defunded the Master Plan work as a result of the Long Term Plan process. 	
<ul style="list-style-type: none"> Explore options for an initiative to provide advance notifications to residents in advance of any significant rain events. 	<ul style="list-style-type: none"> Advice was taken on this initiative that raised issues whereby staff were not recommending a unique alert system, instead pointing towards reinforcing and supporting centralised messaging through developed channels, supported by community resilience and developments networks, and most importantly primary reference to Civil Defence Emergency Management messaging in emergencies, and Council communications around impending severe weather events. The Severe Weather Readiness Resource for the Board area includes links to what current relevant notification sites exist, including an interactive map for general information on potential flood hotspots, a link to the ECan site for current flood warnings, and a link to the Flood Hub for current river flood alerts and live river flooding data. 	<ul style="list-style-type: none"> The introduction of an alert system before any significant rain events.
<ul style="list-style-type: none"> Consider the goals of the Ōtautahi Christchurch Climate Resilience Strategy in all decision making. 	<ul style="list-style-type: none"> In its submission on the Council's Annual Plan 2023/24, the Board showed its commitment to supporting the ongoing development and implementation of the Ōtautahi Christchurch Climate Resilience Strategy's climate goals and supporting proposed positive changes. 	<ul style="list-style-type: none"> The goals of the Ōtautahi Christchurch Climate Resilience Strategy have been considered.

Flooding in the Papanui-Innes-Central Board	
	<ul style="list-style-type: none"> The Board's LTP 2024-34 submission noted that: <i>Particularly in relation to the Board's prioritisation of a connected transport network, and in regard to addressing flooding and intensification, the Board signalled in its Board Plan that it will consider the goals of the Ōtautahi Christchurch Climate Resilience Strategy in all decision making, and in this context it seeks that the Council consider these also in this matter.</i> The Council's letter of response to the Board after the adoption of its LTP noted its commitment to bringing forward \$1.8 million in operational funding for climate adaptation work, to accelerate the Coastal Adaptation Planning Programme and boost community preparedness.

Priority Six

Intensification in the Papanui-Innes-Central Board		
What the Board will do	Progress to date/actions taken	Measures of Success
<ul style="list-style-type: none"> Advocate for community facilities, sport and recreation facilities, greenspace, and amenities in areas of high intensification, and areas earmarked for future intensification in partnership with the community. 	<ul style="list-style-type: none"> In its submission on Plan Change 14, the Board did this, particularly highlighting community concerns that infrastructure may not be adequate to support continual growth through intensification, noting concerns raised include a lack of amenities, community facilities and recreational greenspace, and the effects of intensification on transport corridors and networks. The Board also urged that changes have a view to retaining spaces for community facilities, sport and recreation facilities, greenspace, and amenities in areas of high intensification, and areas earmarked for future intensification. The Board also expressly advocated for community facilities and amenities as relevant to intensification in its submission on the Draft Greater Christchurch Spatial Plan. Staff advised that the Plan may identify Papanui as a future 'Priority Development Area'. A future Local Area Planning programme will be initiated on completion of the Ōtautahi Christchurch Plan. Should Papanui be identified as a priority location, work will be initiated to address impacts of intensification for the area. Staff advised of work underway to consider initiatives that would support good intensification in the Central City, in particular the southeast area which currently has a lower level of amenity (e.g. new green links). The Board has been briefed by Council staff and ChristchurchNZ respectively in relation to initiatives and planning for South East Central City Neighbourhoods (April 2023) and in the vicinity of Lancaster Park/Charleston (June 2023). The South East Central Neighbourhood Plan has since been approved in February 2024 for consultation, and endorsed by the Board in July 2024. The Board has supported the greenspace at Papanui Bush off Langdons Road with a grant to assist with the walkway construction, and promotion and participation in relation to planting days. The Board Chair in October 2023 presented to the Independent Hearings Panel for Plan Change 14 to speak to its submission highlighting community concerns and providing background on the Board area for the assistance of the Panel. The Community Governance Team are working with other areas of Council to understand development in East Papanui with a view to facilitating opportunities for advancing the Board's priorities in response to any intensification. The Board approved the Avebury Park Play Space Upgrade in at its November 2023 meeting after considering the community feedback on the project. The Board continues to support sport clubs in the wards with their facilities, such through SCF and DRF grants. The Board approved funding from its Better Off Fund to revitalise the Tiny Shops space in Linwood Village in partnership with Te Whare Roimata. Redesigning the area provides an opportunity for revitalisation of the remaining space ensuring it maintains its welcoming appeal through the upgrading of the café facilities, purchase of a storage shed, further planting and greening of the area and improvement and redesigning of the existing playground space which will fit into the new space. Letter of support provided to St James Croquet Club to present to other potential funders in relation to upcoming works the Club anticipates requiring. 	

Intensification in the Papanui-Innes-Central Board		
	<ul style="list-style-type: none"> At its March 2024 meeting, the Board approved Better Off funding to: St Albans Pavilion and Pool Incorporated towards the compliance, planning and contract costs associated with the building of the Edgware Pool; and to Shirley Intermediate School towards the Shirley Intermediate School and Community Pool Project costs. At its April 2024 meeting, the Board approved Better Off funding to: the Ron Proctor Environmental Award Trust towards the Papanui Bush pathway; and to the Parks Unit towards additional planting for Rutland Reserve. At its May 2024 meeting, the Board approved the site selection and final concept design for the Lancaster Park changing rooms and community facility, and that staff proceed to detailed design and construction of the selected design of the buildings. The Board's LTP 2024-34 submission noted that: <i>The Board is encouraged to see Project 838 to support population growth tagged to Papanui ward, reflecting the focus in the Board Plan on the needs of youth and a growing ward.</i> <p><i>As repeated throughout in this submission, investing in community is vital for a thriving city and people, and the Board supports this manner of planning for the long term. Libraries are important to communities in many ways, not only repositories of information and learning, but as places where people can find connections and become aware of, and engaged with, the Council's work – they are very important for many citizens in providing a sense of place, community, and a regular destination that shapes their lives. Libraries thus significantly contribute to community, and often personal wellbeing.</i></p>	
<ul style="list-style-type: none"> Advocate for Financial Contributions to be available for land purchases for greenspace for the purpose of planting canopy trees where there is a need, and it is appropriate. 	<ul style="list-style-type: none"> The Board, in submitting on Plan Change 14, advocated that financial contributions from developers be available for land purchases for greenspace for the purpose of planting canopy trees where there is a need, and it is appropriate. The Board further noted that having reviewed maps of the Board area it considers there are some needs for additional greenspace, particularly around St Albans. The Board specifically supported the proposal for a mechanism to help maintain the city's tree canopy cover on land that is subdivided, whereby financial contributions could be required from those developing land who do not keep existing trees or plant 20% tree canopy cover on a site, and 15% tree canopy over any new road. Staff advise that area-specific development contributions have been identified for the Grassmere ODP, which has received IAF funding, and will be implemented through the next review of the policy. 	
<ul style="list-style-type: none"> Advocate for the retention of greenspace as parks, pocket parks or gathering spaces for community use. 	<ul style="list-style-type: none"> The Board, in its submission on the Council's Annual Plan 2023/24, advocated that priority be given within existing programmes to advancing projects reflecting the Board's priorities where possible, including specifically considering community, sport and recreation facilities, as well as greenspace and amenities, in areas of high intensification, or areas earmarked for future intensification. Staff advise that the District Plan sets out requirements for reserve contributions and the provision of greenspace. At its February 2024 meeting, the Board approved funding from its Better Off Fund for planting to enhance the environmental landscape and beautification of the new Youth Hub in Salisbury Street Christchurch. At the June 2023 Board meeting Dame Sue Bagshaw made a deputation outlining progress on the Youth Hub and highlighted the need for a planting schedule. Central to this planting schedule is the Cultural Design Strategy which includes the Mahinga Kai Planting Strategy. The Matapopore Charitable Trust provided a cultural design strategy as a framework for embedding and celebrating Ngāi Tūāhuriri / Ngāi Tahu values, narratives, and aspirations of the Christchurch Youth Hub. In its submission on the Ōtākaro Avon Stormwater Management Plan, the Board highlighted that: <i>The "red zone" river area from city to sea is a golden opportunity to create a world class natural environment that serves the many life forms including the people who live there by providing a healthy and recreative space to commune with nature.</i> <p><i>There are residents who feel strongly that this can be achieved by a simple approach - native plantings, reviving riparian flood areas, and limiting human intervention to bike paths, bird stands, and toilets (i.e.: minimum cost, maximum effect) - particularly in the area between Fitzgerald Ave and Gloucester St/Gayhurst Rd. It is strongly felt that commercial farming leases and practices should be reduced or eliminated, and thereby aid the reduction of nitrogen and phosphorus runoff (among other things).</i></p>	
<ul style="list-style-type: none"> Advocate for the inclusion of funding in the LTP for any amenities that may be identified in future developments. 	<ul style="list-style-type: none"> In its submission on the Council's Annual Plan 2023/24, the Board requested that LTP 2021-31 Resolution M9A (C-LTP/2021/00085 – 'That the Council retains the existing \$500,000 budgeted in FY 2031/32 as the Council's contribution to a community-partnership development of a community facility between Redwood and Prestons') is reflected at least in the next LTP as a line item updated to the current position with 	<ul style="list-style-type: none"> The Board will have advocated for the inclusion in the LTP for any amenities identified in future developments.

Intensification in the Papanui-Innes-Central Board		
	<p>an endeavour that the budgeted Council contribution keep pace or move to meet the time when a community-partnership could develop a community facility in proximity to Redwood, Prestons and the new Oakbridge subdivision.</p> <ul style="list-style-type: none"> The Board Chair in the LTP briefing to Council in October 2023 highlighted priority to ensure that development in East Papanui comes with provision for community amenities, and advocated for the funding to realise a vision for the future Shirley Community Reserve, to be determined in consultation with the community. The Board's LTP 2024-34 submission noted that: <i>In its Board Plan, the Board signalled that it would, and does, advocate for amenities, such as greenspace, and recreation, sports and community facilities, in future development areas to ensure that the wellbeing of our fast-growing population and communities in the Papanui Innes Central ward area, are supported with these important amenities. We also highlighted some priorities of particular importance as below, as well as the revitalisation of Petrie Park as a local partnership project with the community, which there needs to be continued support for, recognising the work of the rangers with the local group. More broadly important in the vicinity to Greater Christchurch though is the ecological restoration of the Ōtākaro Avon River Corridor, which we also support.</i> The Council resolved to increase the budget in the Long Term Plan by \$190,000 (CAPEX) in FY24/25 to complete the Greening the East project with the original number of trees anticipated. 	
<ul style="list-style-type: none"> Promote and support quality engagement practices. 	<ul style="list-style-type: none"> Regular Board staff collaboration with the Engagement Team to support integrated and informed engagement on matters relevant to the Board area. Support for comprehensive and current engagement on Shirley Community Reserve recognising the relevance of how the area has developed and ensuring to engage appropriately with current stakeholders, such as taking engagement activities into local schools and the FRESH event associated with YCD on the Reserve. Promotion of the engagement on the draft LTP, with accompanying resources and news items, including on library drop-in sessions, undertaken through the Board's webpage. 	
<ul style="list-style-type: none"> Encourage the community to be active and participate in any decision-making that may influence the outcomes of their communities. 	<ul style="list-style-type: none"> The Board continue to promote consultations through their engagement with their community networks, including via regular community liaison meetings, ward school principals' liaison meetings, their social media channels, and promoting community input on such matters as the Board Plan at community events. Board staff continue to promote council consultations through the Area Report, and support public participation through the public forum and deputations. Board members and the Community Governance Team promoted the opportunity for the community to submit on the draft LTP to influence the outcomes for their community. 	
<ul style="list-style-type: none"> Advocate that flood mitigation is considered in new developments to ensure existing networks are not overwhelmed and remain effective in significant rain events. 	<ul style="list-style-type: none"> In its submission on Plan Change 14, the Board noted its wish to especially ensure three waters infrastructure is able to appropriately manage and support intensification and development, with flood mitigation projects investigated and implemented where necessary. The Board's LTP 2024-34 submission noted that: <i>The Board also signalled it would advocate that flood mitigation is considered in new developments to ensure existing networks are not overwhelmed and remain effective in significant rain events. The Board is encouraged in this respect to see some appearance of provision for new development in East Papanui (between Cranford and Grassmere streets), though remains concerned that it is yet to be evidenced that intensification across the Papanui-Innes-Central wards will not contribute to surface flooding issues.</i> At an information session with Three Waters in October 2024, the Board sought clarity regarding what the Three Waters projects are around the Cranford regeneration/Grassmere area, and whether there could be a meeting for interested locals with the technical experts to understand the issues, addressing the significant interest in the area. The Board received follow up clarification that: <i>In regard to the Grassmere development Council is installing water and wastewater services to service the development. Projects in the LTP are as follows: 65008 – WS Grassmere Water Supply Main; 71995 – WS Grassmere to Mays Link Main; 71996 – WW Grassmere Wet Weather Storage Facility.</i> 	
<ul style="list-style-type: none"> Consider the goals of the Ōtautahi Christchurch Climate Resilience Strategy and the Ōtautahi-Christchurch Urban Forest Plan in all decision making. 	<ul style="list-style-type: none"> The Board in its submission on the Plan Change 14 recommended that any opportunity for the goals of the Ōtautahi Christchurch Climate Resilience Strategy and the Ōtautahi-Christchurch Urban Forest Plan to be incorporated is taken. In its submission on the Ōtautahi-Christchurch Urban Forest Plan, the Board advanced its support of its objectives, including noting that targets are important for ensuring accountability for tracking the growth of our urban forests. 	<ul style="list-style-type: none"> Canopy cover will be maximised in line with the Ōtautahi-Christchurch Urban Forest Plan.

Intensification in the Papanui-Innes-Central Board		
	<ul style="list-style-type: none"> The Board approved a planting plan for Lancaster Park under the Urban Forest Plan at its August 2023 meeting, and the initial major planting event at Lancaster Park took place in September 2023. The Board highlighted this priority to Council in November 2023, particularly as relating to promoting tree canopy cover, displaying photos of planting days at Essex Reserve, Rutland Reserve and Lancaster Park. At its March 2024 meeting, the Board approved urban forest tree planting in Cambridge Green and Marble Wood Reserve. The Board's LTP 2024-34 submission noted that: <i>The Board also highlights its support for the Ōtautahi-Christchurch Urban Forest Plan, noting the importance of replacing and improving tree cover and green/parks amenities, particularly as an offset to housing intensification.</i> 	

Priority Seven

Downstream Effects Management Plan (DEMP)		
What the Board will do	Progress to date/actions taken	Measures of Success
<ul style="list-style-type: none"> Engage with and support the community through ongoing projects due to the effects of the CNC. 	<ul style="list-style-type: none"> The Board received regular briefings from staff to understand and gain an oversight of the project team's investigations and monitoring of the effects of the Christchurch Northern Corridor (CNC), progressing toward engagement with the community about projects for Francis Avenue and Flockton Street. DEMP traffic calming trials: A mixture of speed humps, road narrowing, and chicanes were trialled from August to October 2022. Result were analysed during the trials and further investigated for the rest of 2022. Engagement for traffic calming project on Flockton Street and Francis Avenue ran from 30 August – 27 September 2023 and the Board was further briefed subsequent to this consultation on the engagement results. The DEMP Project Manager meet with St Albans School around their concerns for the safety of children travelling to and from the school, which they presented to the Board on at its 9 May 2024 meeting. At its meeting on 11 July 2024, the Board resolved to approve the recommended solution for Francis Ave and Flockton Street (including installing four safe speed platforms on the latter) in response to the increase in traffic following the opening of Christchurch Northern Corridor (CNC) to meet the Notice of Requirement condition to improve the operation of Cranford/Sherborne Streets or implement calming on affected streets, where traffic increases by more than 30% as a result of the opening of the CNC. At its meeting on 14 November 2024, the Board resolved various improvements to Cranford Street as part of the CNC DEMP project, and recommended that the Council approve the bus lane option for relevant peak-hour lanes between Innes Road and Berwick Street after considering 629 submissions and 14 deputations on the improvements for Cranford Street and peak-hour lane options. 	<ul style="list-style-type: none"> Residents are kept informed of future projects to continue to mitigate the effects of the CNC.
<ul style="list-style-type: none"> Advocate for money to stay on time and on budget as per the DEMP staged plan. 	<ul style="list-style-type: none"> The Board, in its submission on the Council's Annual Plan 2023/24 advocated to ensure relevant projects stay on time and on budget as per the DEMP staged plan. The Board Chair in the LTP briefing to Council in October 2023 highlighted the priority of retaining DEMP funding. The Board's LTP 2024-34 submission highlighted its prioritisation of the DEMP as its signal that it would advocate for money to stay on time and budget for it. Funding for the DEMP was retained by the Council in the LTP 2024-34. The Council's letter of response to the Board after the adoption of its LTP noted its commitment to \$9.231 million for the Christchurch Northern Corridor Downstream Effects Management Plan. 	<ul style="list-style-type: none"> Funding is provided to support projects.
<ul style="list-style-type: none"> Continue to advocate for and support any ongoing initiatives due to the effects of the Christchurch Northern Corridor and bring forward funding if appropriate. 	<ul style="list-style-type: none"> In its submission on the Council's Annual Plan 2023/24, the Board advocated specifically for Project 17088 (Christchurch Northern Corridor Downstream Effects Delivery Package) retaining its priority. 	<ul style="list-style-type: none"> As above

Downstream Effects Management Plan (DEMP)		
	<ul style="list-style-type: none"> The Board in its submission on the Draft Greater Christchurch Spatial Plan, advocated that the Plan needs to consider the downstream effects of the Christchurch Northern Corridor around St Albans, and factor in the changes seen as a result in downstream effects and the resulting Downstream Effects Management Plan (DEMP). The webpage for the St Albans, Edgware and Mairehau transport projects details improvements aimed at managing the traffic from the Christchurch Northern Corridor and improving connections for pedestrians and cyclists in the area: https://www.ccc.govt.nz/transport/improving-our-transport-and-roads/transport-projects/stalbans-edgware-mairehau-projects/. The Board fed into the consultation information on the options for Cranford Street: https://letstalk.ccc.govt.nz/cranford. 	
<ul style="list-style-type: none"> Advocate for options to be presented for a street renewal along Flockton Street. 	<ul style="list-style-type: none"> The Board has been briefed, and fed back at briefings, in April and June 2023, on DEMP updates relevant to supporting the consideration of options for street renewal along Flockton Street as the investigation work has been further developed. At its meeting on 11 July 2024, the Board resolved to renew the road corridor pavement on Flockton Street to reduce vibrations. 	<ul style="list-style-type: none"> Decision will be made on options for a street renewal along Flockton Street.
<ul style="list-style-type: none"> Consider the goals of the Ōtautahi Christchurch Climate Resilience Strategy in all decision making. 	<ul style="list-style-type: none"> The Board's advocacy for DEMP projects within its submission on the Councils Annual Plan 2023/24, was complemented in that submission by the emphasis on its commitment to supporting the ongoing development and implementation of the Ōtautahi Christchurch Climate Resilience Strategy's climate goals. The Board followed up on supporting the growing number of cyclists visiting local shops in the DEMP area by providing a safe and convenient parking solution in the form of bike racks to be installed at the Cranford Street and Westminster Street intersection, thereby promoting sustainable transportation and enhancing access to local businesses. The Start Work Notice issued in February 2024, for the work to start the following month. The report to the Board's 11 July 2024 meeting regarding the DEMP recommendations for Francis Avenue and Flockton Street included the standard reporting section on climate change impact considerations, which noted that the proposals are unlikely to contribute significantly to adaptation to the impacts of climate change or emissions reductions. The consultation on the options for Cranford Street was requested to include information on the projected emissions for each option. 	<ul style="list-style-type: none"> Any initiatives will support the goals of the Ōtautahi Christchurch Climate Resilience Strategy.

Priority Eight

Shirley Community Reserve		
What the Board will do	Progress to date/actions taken	Measures of Success
<ul style="list-style-type: none"> Engage with the community to determine and realise the vision for the future of Shirley Community Reserve. 	<ul style="list-style-type: none"> From June through August 2023 Council staff started to engage on the future vision for Shirley Community Reserve with the community. Pre-engagement was undertaken with tamariki and rangatahi at Shirley Primary and Intermediate schools. A FRESH event (a collaboration enterprise of YCD) was undertaken at Shirley Community Reserve. A stakeholder meeting was held in July 2023 on the engagement regarding the future of Shirley Community Reserve. The Korero Mai – Let's Talk consultation on Shirley Community Reserve opened 17 July and ran to 14 August 2023. Staff circulated information on the engagement to residents in the Richmond and Shirley area to raise awareness in the community of the consultation. Twelve engagement opportunities were undertaken with the community (Shirley Library, Avon Hub, Shirley café, rest home). The Board was briefed in December 2023, where the engagement results were presented to the Board, along with the feasibility study. Answers to the Board's questions from the briefing were supplied by way of memo. Deputations from the community were heard at the Board meeting on 13 June 2024 in respect of the report on the proposed community facility for Shirley Community Reserve. 	<ul style="list-style-type: none"> Any work carried out on the reserve will mirror the community vision.

Shirley Community Reserve		
	<ul style="list-style-type: none"> Plans are underway for continued engagement with stakeholders through the further development of the community facility for Shirley Community Reserve. 	
<ul style="list-style-type: none"> Explore partnership opportunities to support the community to fulfil its vision. 	<ul style="list-style-type: none"> To be explored now the community's vision for the future of Shirley Community Reserve is clarified through the community engagement process. The Board resolved on 13 June 2024 to request that staff identify an appropriate community partner/operator to progress the development of the community facility at Shirley Community Reserve and report this back to the Board. Plans are underway for a working group with key partners to support the project to develop a community facility at Shirley Community Reserve. 	<ul style="list-style-type: none"> The reserve will be a destination of choice for the community, a safe space, a place that enhances well-being, and provides a place for social connection.
<ul style="list-style-type: none"> Encourage the community to be active and participate in any decision-making that may influence the outcomes of Shirley Community Reserve. 	<ul style="list-style-type: none"> Engagement on the future of Shirley Community Reserve promoted through the Area Report, Board member social media channels, and activities with stakeholders. Video produced demonstrating the various engagement activities undertaken with the community and schools promoting their participation in shaping the future of Shirley Community Reserve. Deputations on the proposed community facility for Shirley Community Reserve were welcomed to the Board meeting on 13 June 2024, where the Board resolved to request that staff initiate the process to design an 'on budget community building' on Shirley Community Reserve that will enable a mixed use of the Reserve and support recreation, play and social connections. An article on the Board's webpage regarding the agreed vision for Shirley Community Reserve reports the further detail: https://letstalk.ccc.govt.nz/waipapa-papanui-innes-central-community-board/agreed-vision-shirley-community-reserve. 	
<ul style="list-style-type: none"> Consider the goals of the Ōtautahi Christchurch Climate Resilience Strategy and the Ōtautahi-Christchurch Urban Forest Plan in all decision making. 	<ul style="list-style-type: none"> Korero Mai – Let's Talk consultation webpage hyperlinked to Community Board Plan, which expressly shows that the Board will consider the goals of the Ōtautahi Christchurch Climate Resilience Strategy and the Ōtautahi Christchurch Urban Forest Plan in all decision making. The report to the Board's 13 June 2024 meeting regarding the proposed community facility for Shirley Community Reserve included the standard reporting section on climate change impact considerations, which noted that the proposals are unlikely to contribute significantly to adaptation to the impacts of climate change or emissions reductions, and considerations on the impact to climate change will take place in the design stages of any proposed community facility. 	
<ul style="list-style-type: none"> Advocate that Crime Prevention through Environmental Design (CPTED) principles are considered in the project. 	<ul style="list-style-type: none"> Advocacy through presentation to Council at its June 2023 meeting, including a slide highlighting the Board's Community Policing, CPTED, CCTV & RTO Dialogues, specifically noting that the Board, after consulting with the community, adopted within its Board Plan to ask that CPTED principles are considered for Shirley Community Reserve. At its February 2024 meeting, the Board approved funding from its Better Off Fund for a CPTED report for the Shirley Community Reserve project (in due course of the Board deciding the nature of the project) to address any safety issues and how to reduce any opportunities for crime, in any future planning stages. 	<ul style="list-style-type: none"> CPTED principles will be applied to the project.
<ul style="list-style-type: none"> Advocate for funding to be brought forward in the LTP if appropriate. 	<ul style="list-style-type: none"> The Board supported in its submission on the Council's Annual Plan 2023-24 funding relating to Shirley Community Reserve retaining priority. The Board Chair in the LTP briefing to Council in October 2023 highlighted priority to retain funding. The Board's LTP 2024-34 submission noted that: <i>Shirley Community Reserve (projects 20053 and 74005) is a specific dedicated priority in the Community Board Plan. The community has been consulted several times over the last three terms regarding their vision for the future of the reserve, where a well used Community Centre stood before the Canterbury earthquakes. The Board supports funding being brought forward to be in line with a forthcoming Board decision. This will provide certainty to the community that this key space will be duly invested in and developed so it can be successfully activated.</i> <p><i>There is understood to be additional funding for the Parks-funded component of Shirley Community Reserve, available in the parent programme (61782), subject to the nature of the decision on its future of the reserve, theoretically suggesting the possibility of commencing with Parks-funded components ahead of where the Facility funding (20053) is currently sitting. Again, the Board would like to see the Parks funding drawn down from the parent programme into a separate line item, so that it may be visible and subject to a current decision-making process.</i></p>	

Shirley Community Reserve		
	<ul style="list-style-type: none"> The Board succeeded in having the funding for a community facility on Shirley Community Reserve brought forward in the LTP 2024-34. As part of the LTP the Council agreed to bring forward the funding as follows: <ul style="list-style-type: none"> MR6a(i): \$75,000 in FY24/25 (Year 1 of the Long Term Plan); MR6a(ii): \$800,000 in FY25/26 (Year 2 of the Long Term Plan); and MR6a(iii): \$2.83 million in FY26/27 (Year 3 of the Long Term Plan). The Council's letter of response to the Board after the adoption of its LTP noted its commitment to \$50,000 for a landscape development plan for Shirley Community Reserve. 	

Priority Nine

Papanui Youth Facility		
What the Board will do	Progress to date/actions taken	Measures of Success
<ul style="list-style-type: none"> Advocate for the completion of a youth audit (a tool where young people audit places and spaces on five key factors, safety, appeal, accessibility, well-resourced, and youth friendliness). 	<ul style="list-style-type: none"> The Board advocated in its Annual Plan 2023-24 submission for retaining priority of the funding for a Papanui youth facility within 61782 Programme – Community Parks New Development; this is Project 61804 (Development of new recreation spaces such as skate parks, basketball courts, tennis courts and artificial cricket wickets in Community Parks) - youth or skate facility in the Papanui/Redwood area. In October 2024 a youth space will open in Northlands Mall, which will test having this space in the area, in collaboration with Papanui Youth Development Trust. 	<ul style="list-style-type: none"> A youth audit will be completed with a clear vision for a youth space.
<ul style="list-style-type: none"> Engage with local young people to see where in Papanui they would like a potential youth space, using the youth audit principles. 	<ul style="list-style-type: none"> Collaborative work being explored for youth workers in the Papanui ward to make connections, be present after school at the mall, and potentially to develop a youth health and wellbeing space. The Youth Community Safety Project, funded through the Board's Better Off Fund, to address youth safety issues through providing presence-based youth work in the area, is an initiative relevant to the early advancement in this regard of an understanding of the needs of local youth, while prioritising safety initiatives. 	<ul style="list-style-type: none"> A youth facility is delivered as per the vision.
<ul style="list-style-type: none"> Explore partnership opportunities to support young people to fulfil their vision. 	<ul style="list-style-type: none"> In its submission on the Draft Greater Christchurch Spatial Plan, the Board noted that there is a gap in facilities for young people in our community, particularly around Papanui. The Board explained the elements of its priority in relation to what the Board will do around advancing this opportunity for youth in the Papanui area and suggesting that the kind of work it is doing relating to identifying appropriate youth facilities in the area should be considered in the context of the Plan, with a view to relating it to the Priority Development Areas. Police input at the Board's liaison meeting with school principals on 7 June 2024 provided opportunity to understand insight from these agencies relevant to local youth. Brainstorming session held in July 2024 with Police, the Community Governance Team, metropolitan CDA focused on youth, and Board Chair in relation to youth safety initiatives in the local area provided opportunity to workshop intersecting work on these issues and initiatives to engage further with local schools on these issues. A youth space, funded with the Board's Better Off Fund, has been established in Northlands Mall in partnership with Papanui Youth Development Trust and Te Ora Hou. 	<ul style="list-style-type: none"> Youth are involved in the decision-making to fulfil their vision.
<ul style="list-style-type: none"> Encourage the youth to be actively involved in the decision-making process to support their vision. 	<ul style="list-style-type: none"> To be progressed as the priority is further developed. 	<ul style="list-style-type: none"> As above.
<ul style="list-style-type: none"> Advocate for funding to be brought forward in the LTP if appropriate. 	<ul style="list-style-type: none"> In its submission on the Council's Annual Plan 2023-24, the Board advocated for ensuring funding is retained for new recreation spaces such as, but not limited to, skate parks and/or basketball courts in the Papanui/Redwood area. The Board Chair in the LTP briefing to Council in October 2023 highlighted priority to retain funding. 	<ul style="list-style-type: none"> Funding is brought forward, if appropriate.

Papanui Youth Facility	
	<ul style="list-style-type: none"> The Board's LTP 2024-34 submission noted that: <i>The Board has particularly prioritised a youth facility in the Papanui/Redwood area in its Board Plan. There appears to be a significant budget reduction proposed for developing new recreational spaces (project 61804) and play spaces (project 73999) in this area, though this may be owing to the construction budget being absorbed into the parent programme (61782). The Board asks that the Council offer assurance in its Long Term Plan that it is indeed planning for the long term trajectory of our wards and particularly this area of future development.</i> <p><i>The Council resolved in its LTP 2021-31 to specify the project (noted as a Papanui Skate Facility at that time) as a separate line item, and this should be reinstated in full to show the construction component of the budget in the line item as well. This will enable a youth audit to proceed with confidence and clarity that this will be a meaningful engagement with youth in the area, exploring what would truly improve the space, and will confirm there is budget to complete this project in the future.</i></p> <p><i>Though the Board recognises the difficulty of finding appropriate space in the heart of Papanui for new recreational spaces, the Board requests that clearer provision for green and recreational space be made in the LTP in areas earmarked for new housing developments.</i></p> <p><i>It would be reassuring for residents if the Council demonstrated adequate planning and budgeting for youth spaces in this area in light of nearby intensification, with Papanui developing as a higher density area. While the Board supports fiscal restraint to assist current residents, it does not support it to the extent of depriving future residents and the younger generation of the opportunity to retain levels of community amenity that directly impact wellbeing and social connections.</i></p> <p><i>Although there is likely to be an effect on overall budgets for new recreation and play developments, it is also vital to retain provision for community grants and community development budgets to contribute to this essential area. Our youth require the support that comes from these budgets to create initiatives which benefit their safety and wellbeing. Organisations like Papanui Youth Development Trust and Te Ora Hou, which the Board has supported through the Strengthening Communities Fund, serve an important role with their work and facilities, when Council is limited in what it can deliver for youth in the area.</i></p> <ul style="list-style-type: none"> The Council's letter of response to the Board after the adoption of its LTP noted its commitment to \$60,000 for development of the Papanui/Redwood Youth Play Space.

13. Elected Members' Information Exchange Te Whakawhiti Whakaaro o Te Kāhui Amorangi

This item provides an opportunity for Board Members to update each other on recent events and/or issues of relevance and interest to the Board.

Karakia Whakamutunga

Unuhia, unuhia Unuhia ki te uru tapu nui Kia wātea, kia māmā, te ngākau, Te tinana te wairua i te ara takatā Koia rā e Rongo, whakairia ake ki runga Kia tina! TINA! Hui e! TĀIKI E!	<i>Draw on, draw on, Draw on the supreme sacredness To clear, to free the heart, the body and the spirit of mankind Rongo, suspended high above us (i.e. in 'heaven') Draw together! Affirm!</i>
---	--