

**Waihoru Spreydon-Cashmere-Heathcote Community
Board Information Session/Workshop
MINUTES ATTACHMENTS**

Date: Thursday 27 March 2025
Time: 4:30 pm
Venue: Linwood Boardroom,
Gate B, 180 Smith Street,
Woolston

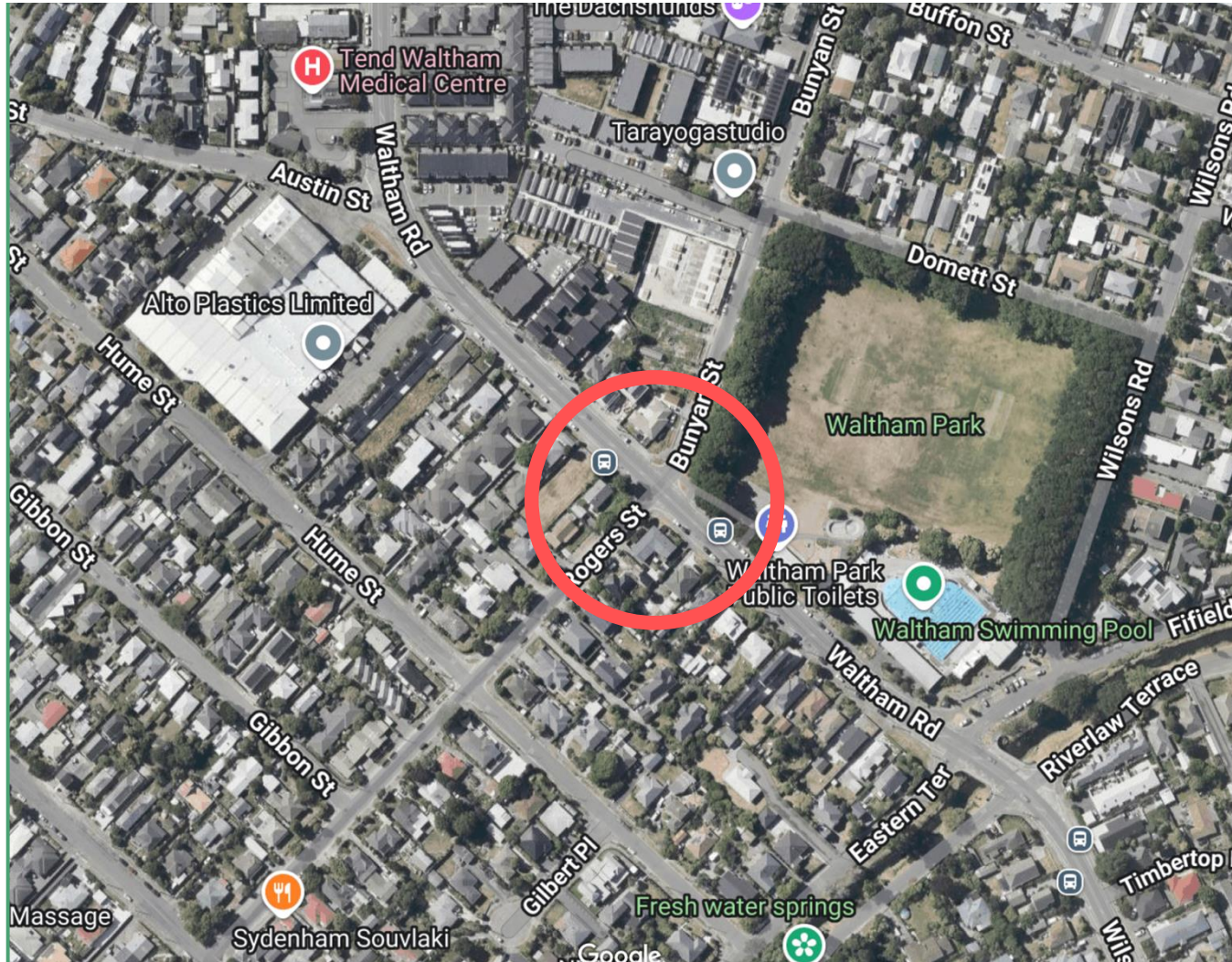
TABLE OF CONTENTS NGĀ IHIRANGI	PAGE
2.1. Open Forum - Pedestrian Safety - Waltham Road, Bunyan Street, Rogers Street Intersection	
A. Nyker Matthew King, pedestrian safety presentation to the Board	3
3. Orion - Update on cable installation between Milton and Halswell	
A. Orion presentation to Board.....	19
4. Three Waters Programme	
A. Three Waters staff presentation to the Board	30

Waltham Road Intersection Pedestrian Safety

Nyker King

27 March 2025

Waltham Road - Bunyan Street - Rogers Street Intersection Map



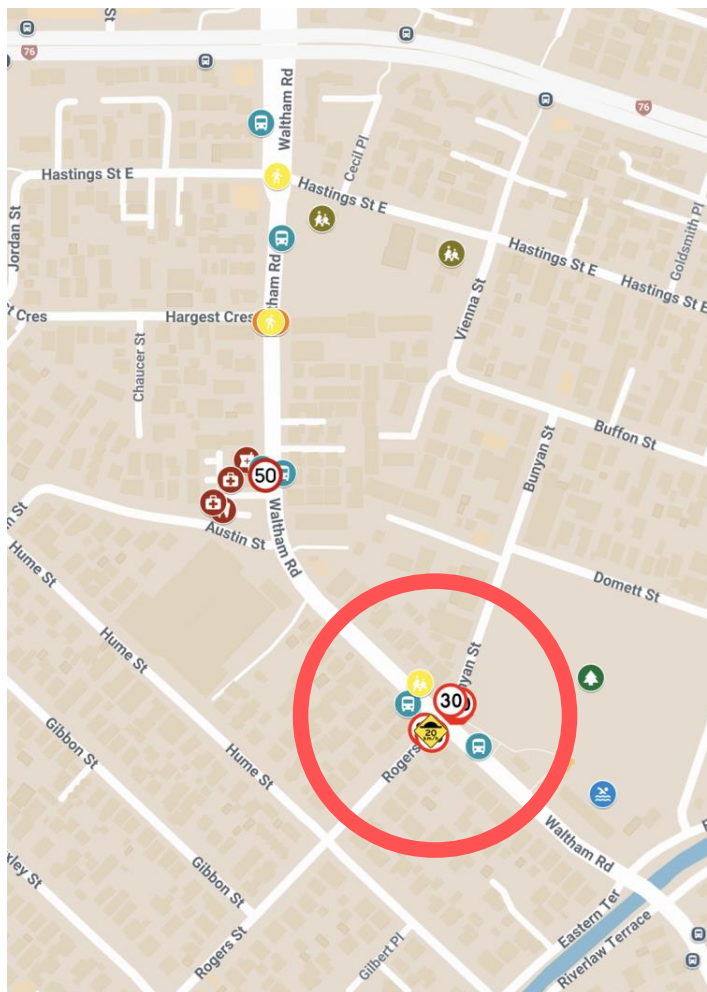


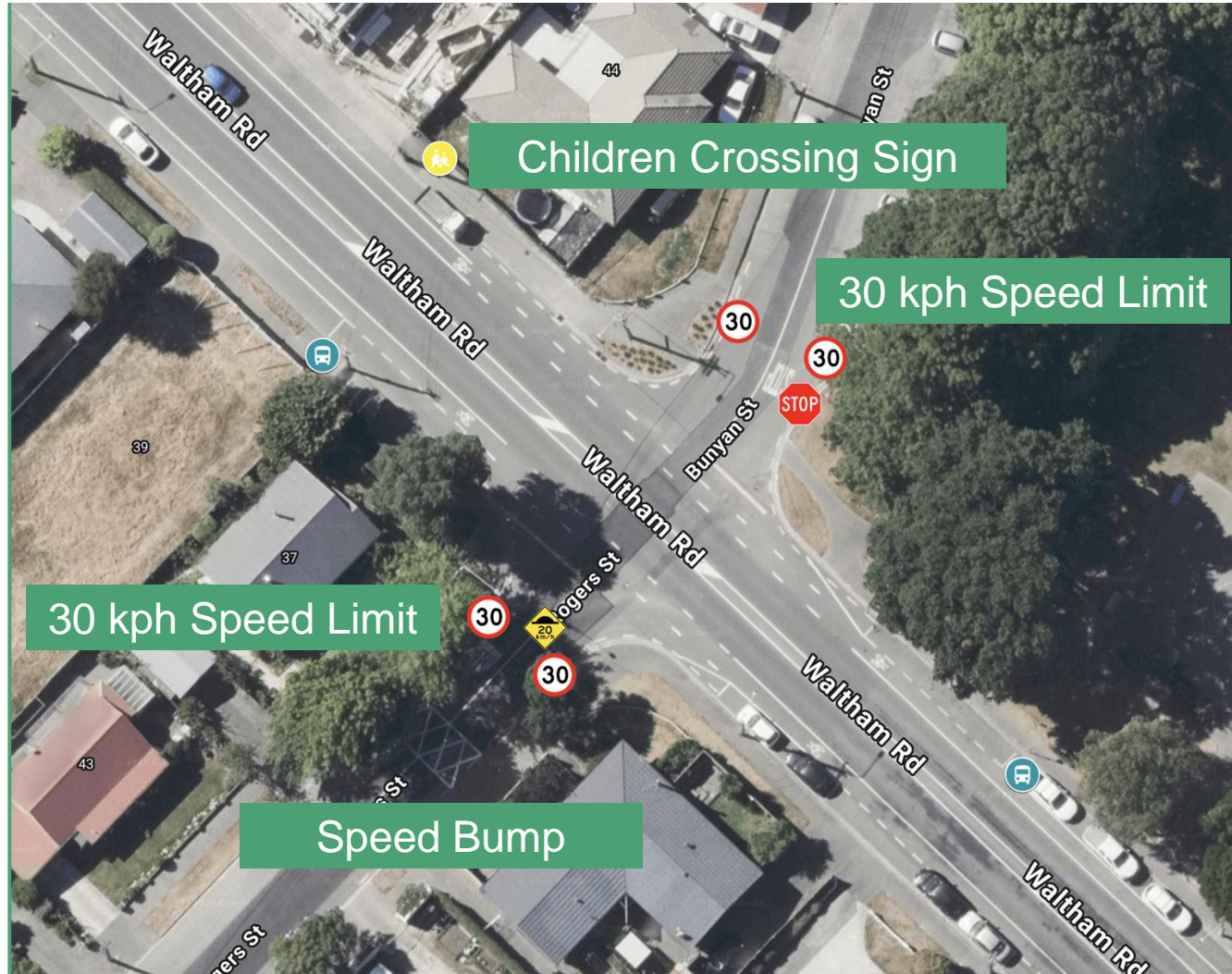
Places of Interest

- Waltham Park
- Waltham Swimming Pool
- Waltham School
- Sydenham Community Preschool
- Waltham Pharmacy
- Tend Waltham Medical Centre
- Waltham Dental Centre
- PhysioMed Waltham
- Waltham Rd near Rogers St
- Waltham Rd near Bunyan St
- Waltham Rd near Austin St
- Waltham Rd near Austin St
- Waltham Rd near Hastings St E
- Waltham Rd near Hastings St E

Safety Features

- Belisha Beacon Disc
- Belisha Beacon Disc
- Marked Pedestrian Crossing (Zebra)
- Pedestrian crossing (zebra) with pedestrian refuge island in a flush median
- Children Crossing Sign
- Digital 50kph Speed Limit Kura School Sign
- Stop sign
- 30kph Speed Limit Sign
- 30kph Speed Limit Sign
- 30kph Speed Limit Sign
- 30kph Speed Limit Sign
- Speed Bump





Rationale

Why improve?



Busy location used by pedestrians and cyclists travelling to school, work, leisure, or across the community.



There is ongoing risk to all users at the intersection.

Safety System Principles



(NZ Transport Agency Waka Kotahi, 2022)

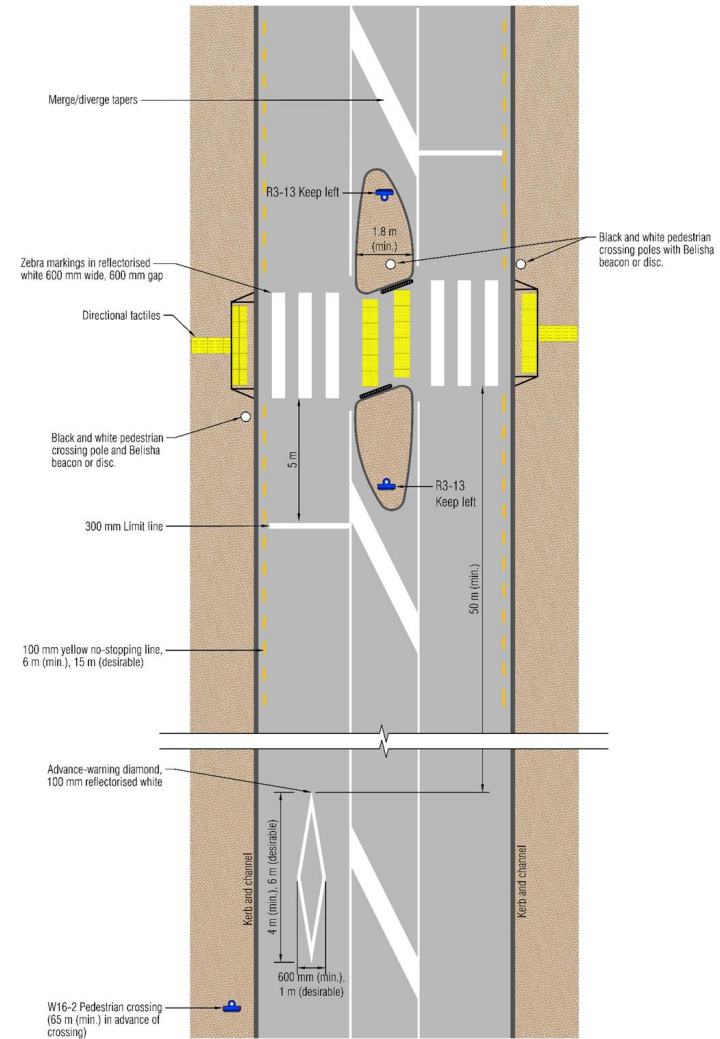
Layman's Suggestions

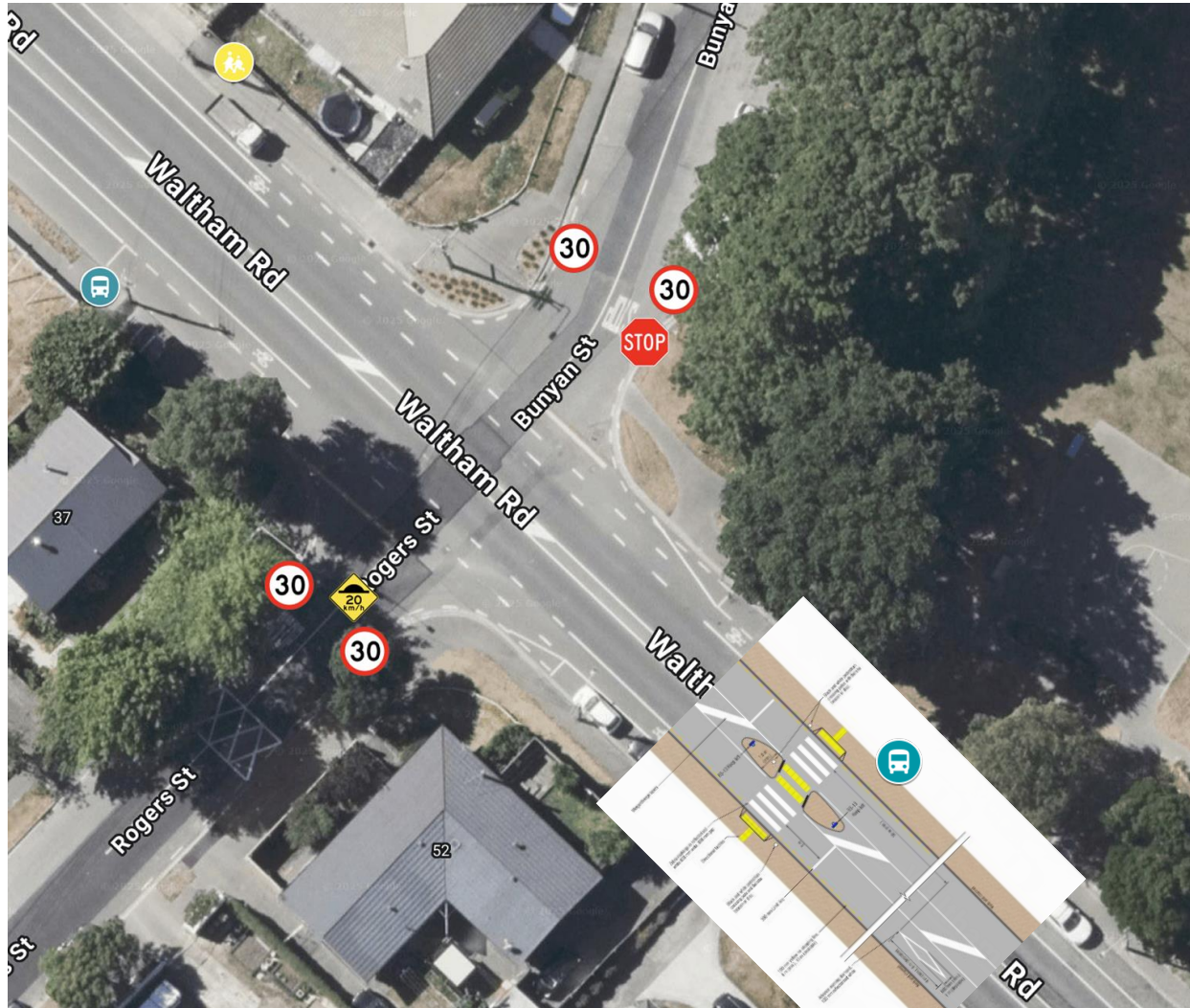
**based from NZ Transport Agency Waka Kotahi's Traffic Control
Devices Manual (2008)**

(Sorted by most to least favourable)

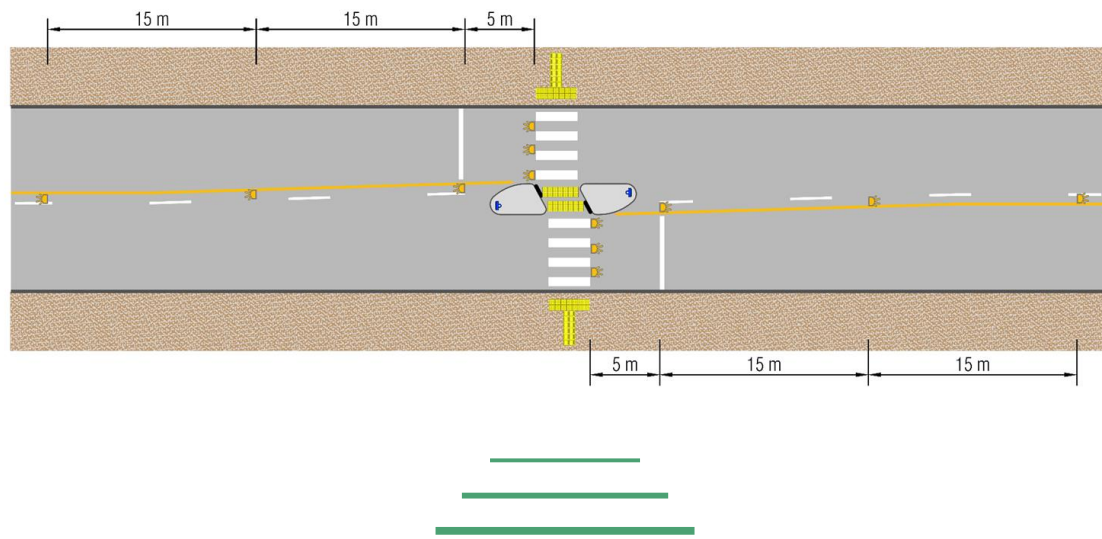
#1

Placement of pedestrian crossing (zebra) with pedestrian refuge island in a flush median

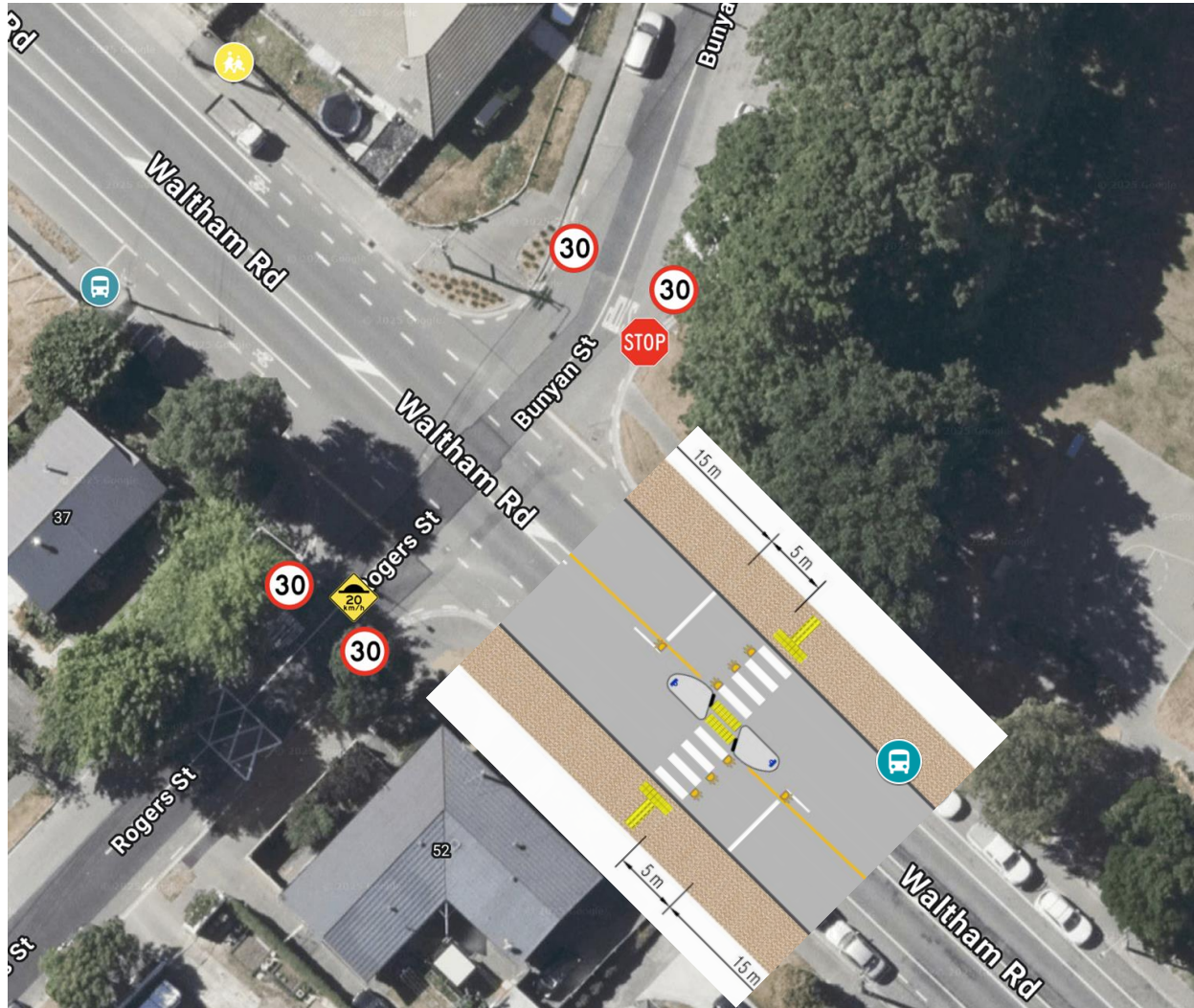




#2

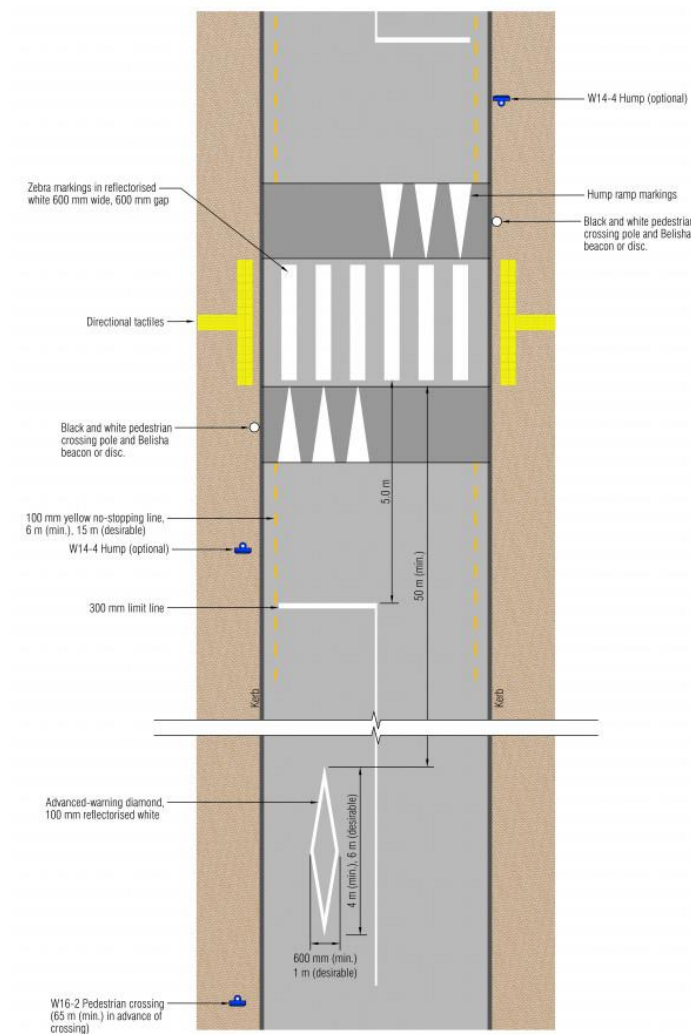


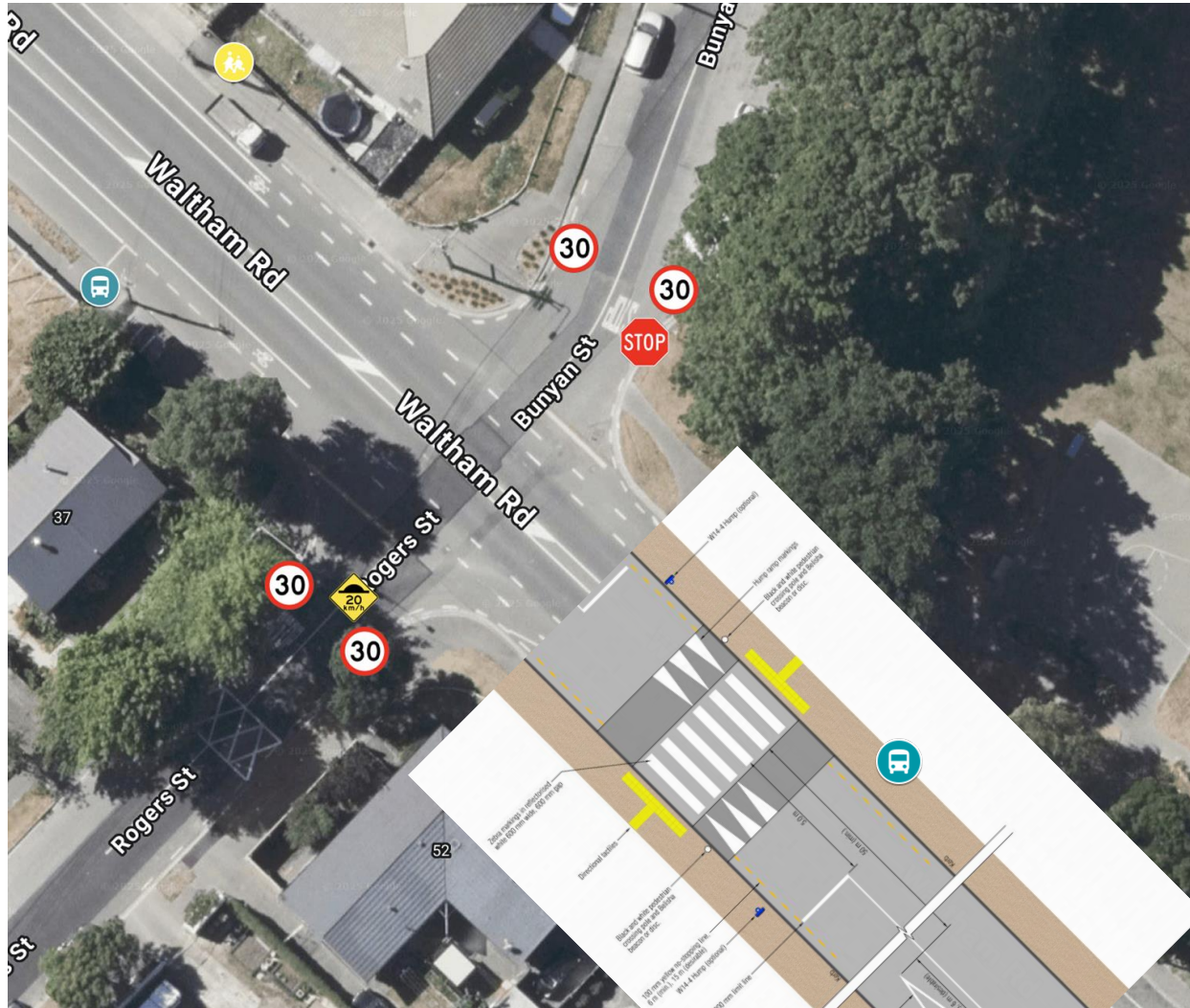
Placement of **warning lights** - two-lane, undivided roadway with **pedestrian refuge island**



#3

Placement of pedestrian crossing (zebra) on raised platform





We're strengthening our electricity network



Paris Guglielmoni
27 March 2025

Orion

Overview

- What we're doing and why.
- How do we install underground cables.
- How we'll engage with the community.
- Next steps
- Pātai



Orion

Our **purpose** is to power
a cleaner and brighter future
with our community

3

Why we're strengthening our network



What we're doing

- We're installing a new 66kV underground power cable from the Milton zone substation to the Halswell zone substation.
- Upgrades to the Hoon Hay substation.

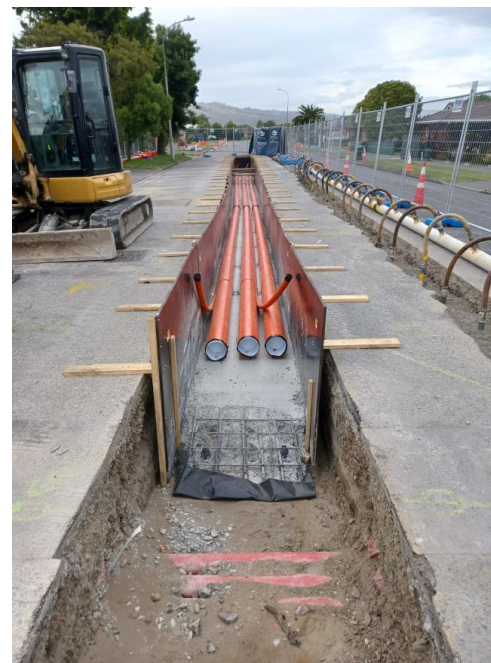


Orion



How we install the cable

- The cable is installed in a trench in the road.
- We'll be using a construction method called ducting where we can.
- Ducting helps us get the work done quicker with less community impact.



Orion

**Strengthening
our power
network.**



Next steps: work starting



Construction period:

- 1** Stage one
Late April - late May
- 2** Stage two
Mid May - mid June

How we'll communicate

- We want to work with communities to understand their needs.
- We want to be a good neighbour where we're working.
- Use a variety of channels to keep people informed about work affecting them.



Orion

Thank you Questions?

Haveyoursay@oriongroup.co.nz

The Orion logo is displayed in white text on a horizontal bar with a green-to-teal gradient.

Three Waters Programme

27 March 2025

Presented to Waihoru Community Board
by Gavin Hutchison Head of Three Waters

Purpose of Briefing

The purpose of this session is to brief the Board on our Three Waters Programme in response to requests raised at an Information Session held on 7 November 2024.

The request included the following:

1. A more detailed overview of the leakage programme, including key concerns.
2. Requested staff provide a future information session on reactive maintenance.
3. Requested an update on McCormacks Bay Flood Management.

Leakage Programme

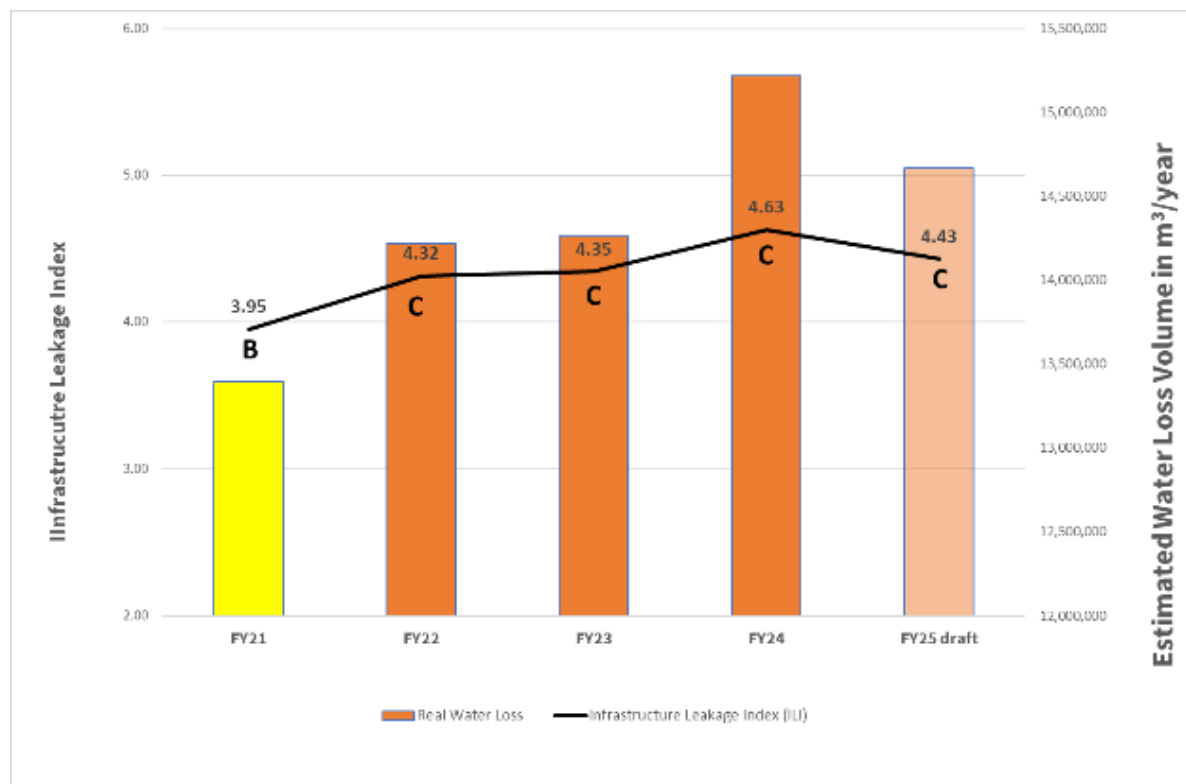
26 March 2025

Christchurch
City Council 

Leakage Measurement

- Unlikely to meet the Percentage of Real Water Loss LoS target
- I would expect the % of leakage to rise this year due to lower consumption
- Infrastructure Leakage Index (ILI) is the preferred method to measure leakage
- Using ILI method some areas have not improved – predominantly Industrial areas

Leakage Measurement



26 March 2025

Leakage Programme

- We will allocate further OPEX funding for leak detection in FY26
- Request will be made for additional OPEX funding next Annual Plan
- Focus on better **data quality** and expanding the program

Leaks Repaired

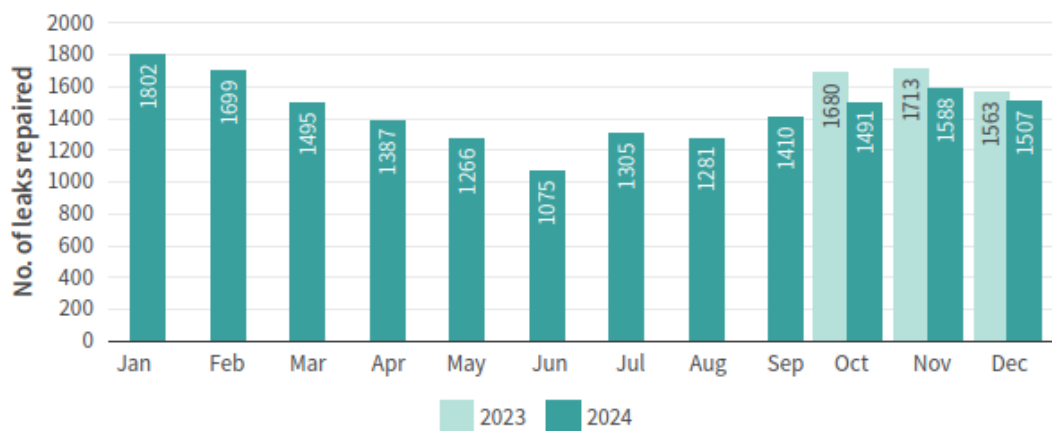
What we did, in numbers – October to December 2024



4586

Water leaks repaired

A year of repairs



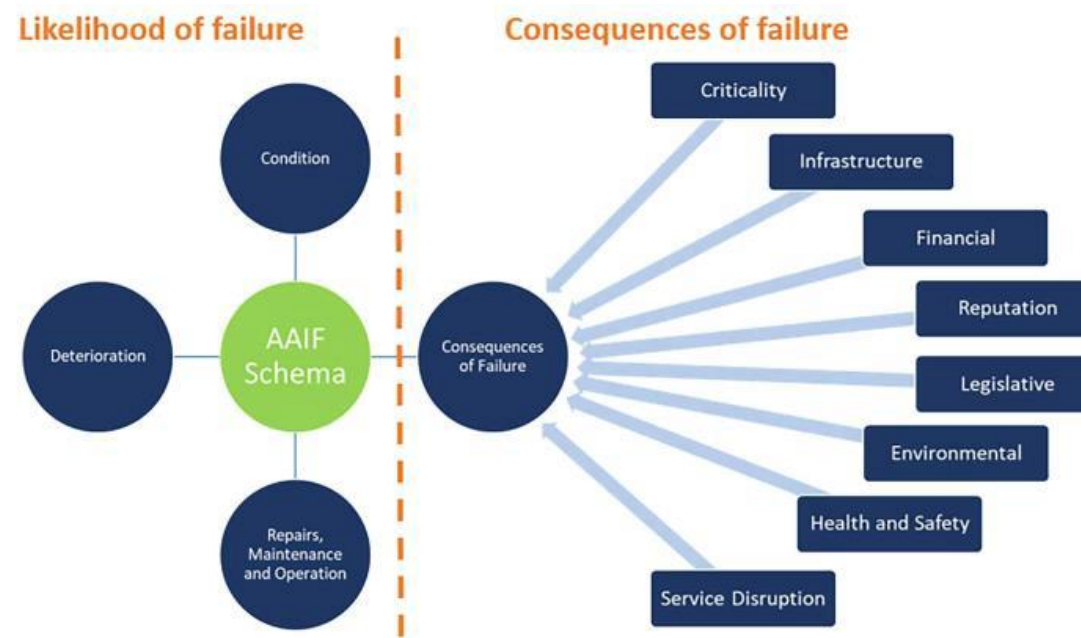
Renewal Planning and Reactive Maintenance

26 March 2025

Christchurch
City Council 

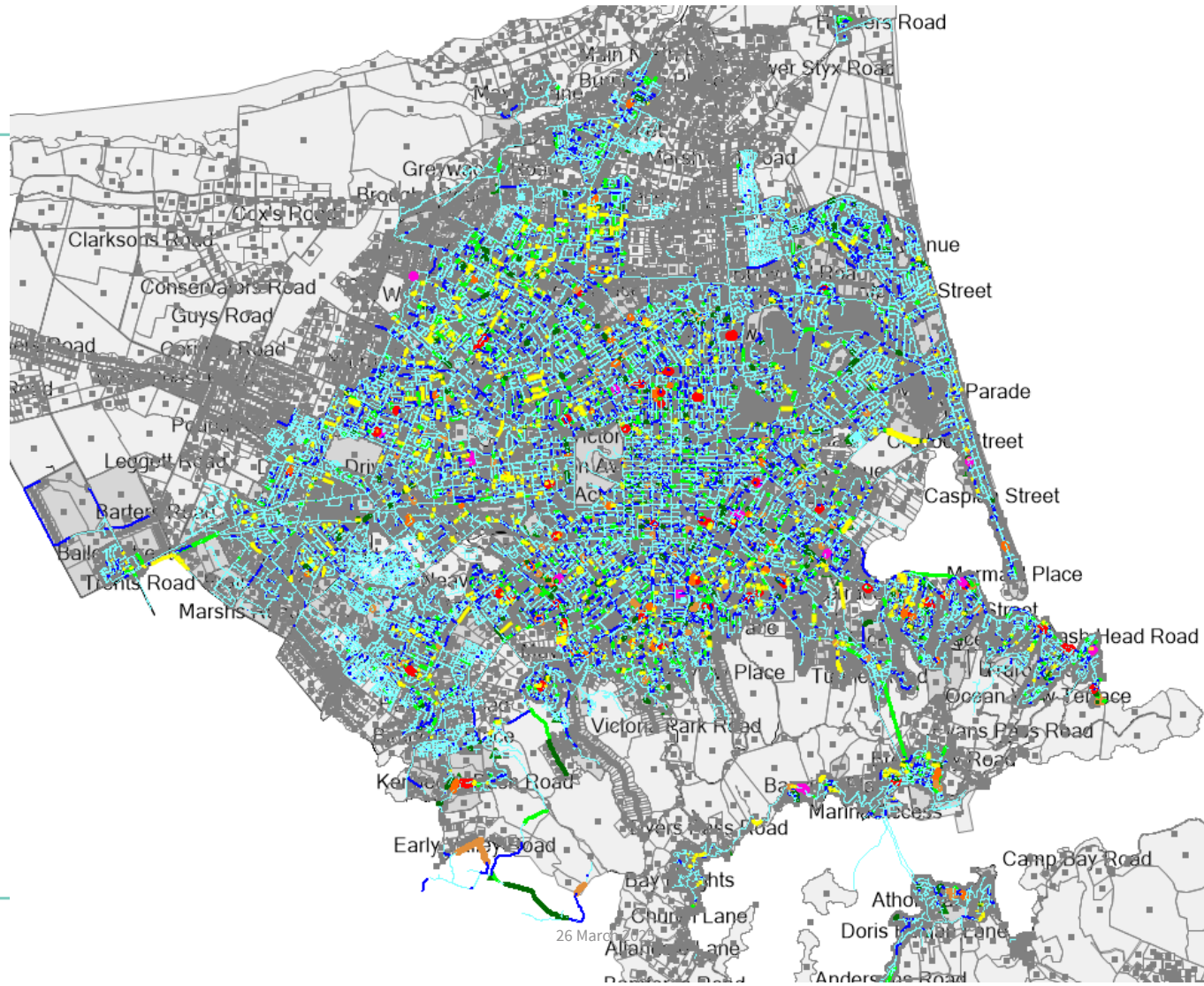
Renewal Planning

- Asset Assessment and Intervention Frame

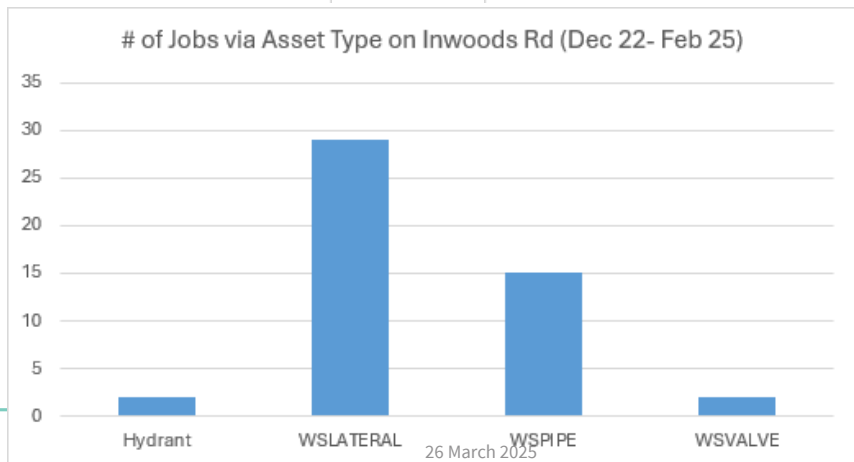
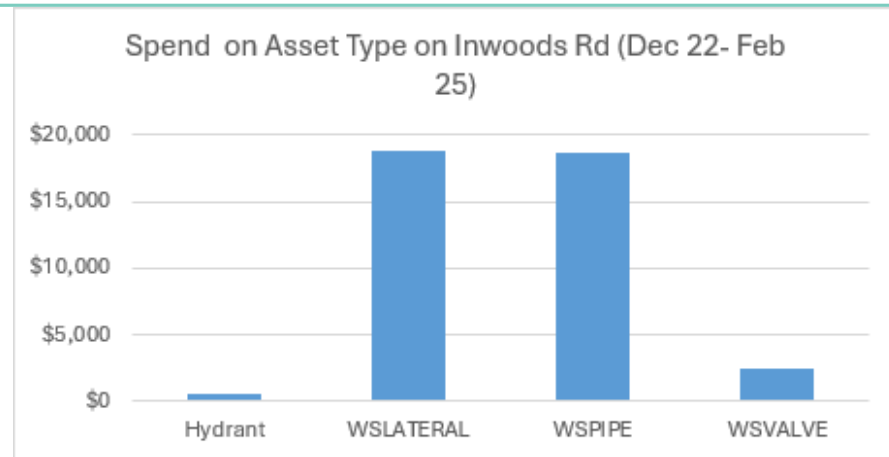
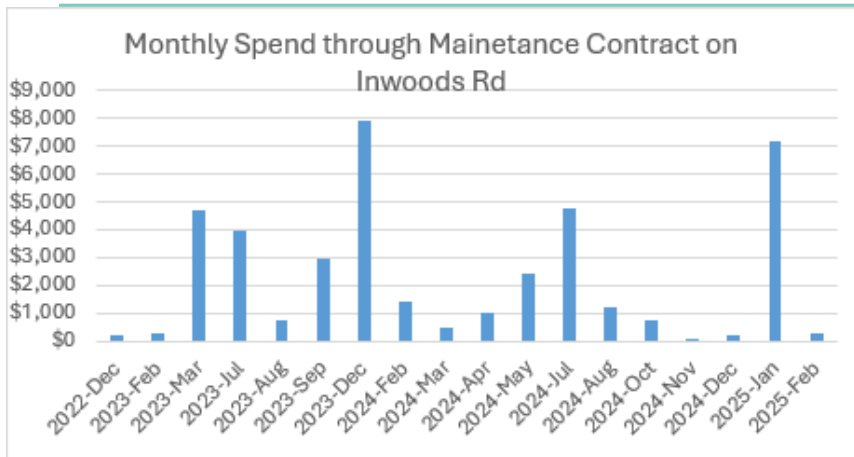


Calculating the Likelihood of Failure

26 March 2025

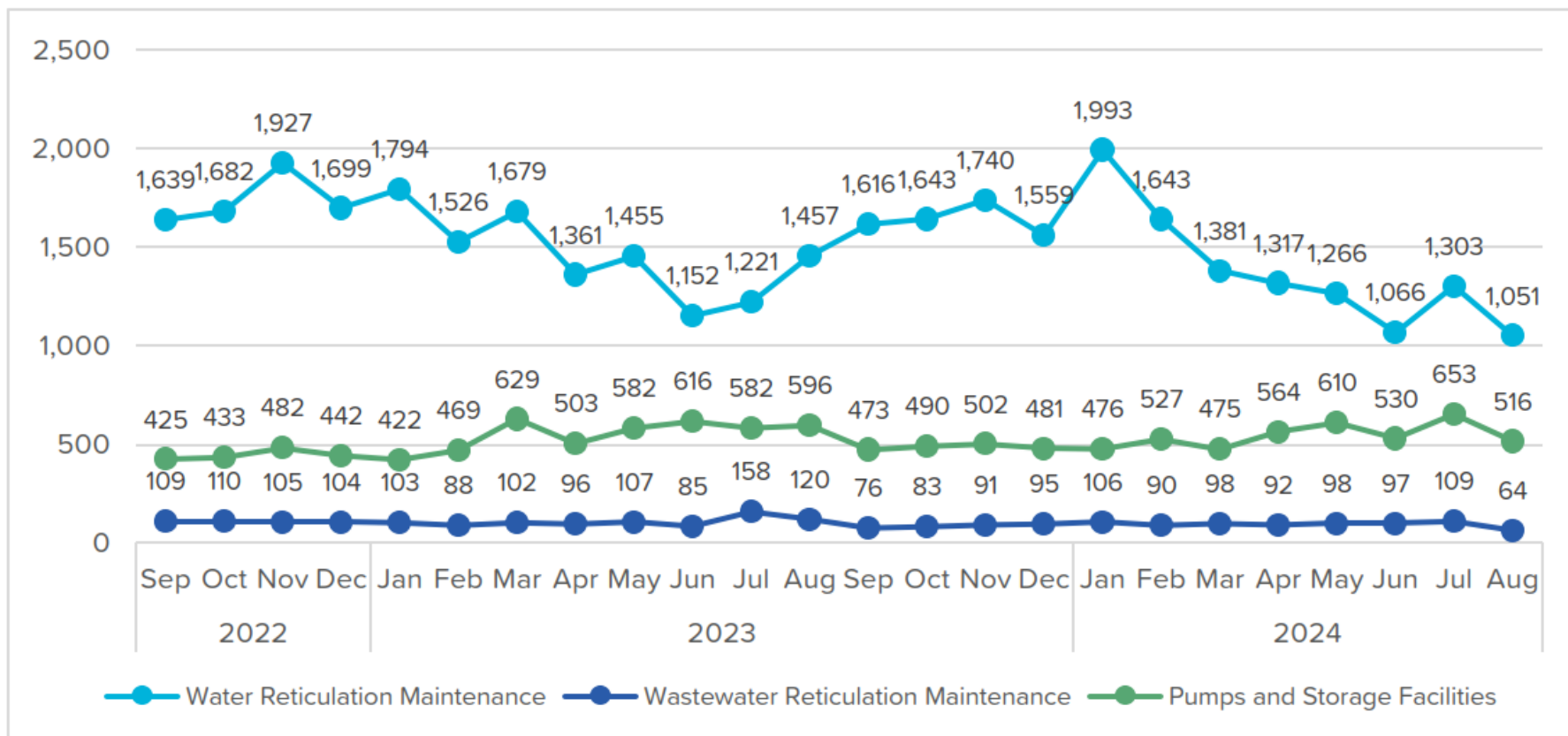


Reactive Maintenance - Example



26 March 2025

Total Reactive Work Volume 2023/2024



26 March 2025

McCormacks Bay Flood Management

26 March 2025

Christchurch
City Council 

McCormacks Bay Flood Management

- Added to the list for consideration in the Flood Reduction Programme

26 March 2025

Questions?