
Waipuna Halswell-Hornby-Riccarton Community Board Information Session/Workshop AGENDA

Notice of Information Session/Workshop Te Pānui o te Hui:

A Waipuna Halswell-Hornby-Riccarton Community Board Information Session/Workshop will be held on:

Date: Thursday 27 March 2025
Time: 5 pm
Venue: Rārākau: Riccarton Centre,
199 Clarence Street, Christchurch

Membership Ngā Mema

Chairperson	Marie Pollisco
Deputy Chairperson	Helen Broughton
Members	Sarah Brunton
	Henk Buunk
	Gamal Fouda
	Tyla Harrison-Hunt
	Andrei Moore
	Debbie Mora
	Mark Peters

Principal Advisor

Bailey Peterson
Manager Community Governance
Tel: 941 6743
Bailey.Peterson@ccc.govt.nz

24 March 2025

Meeting Advisor

Faye Collins
Community Board Advisor
Tel: 941 5108
faye.collins@ccc.govt.nz

Website: www.ccc.govt.nz

Note: This forum has no decision-making powers and is purely for information sharing.

To watch the meeting live, or previous meeting recordings, go to:

<https://www.youtube.com/@waipunahalswell-hornby-ric5806/streams>

To view copies of Agendas and Notes, go to:

<https://www.ccc.govt.nz/the-council/meetings-agendas-and-minutes/>



TABLE OF CONTENTS NGĀ IHIRANGI

1. **Apologies Ngā Whakapāha** 3

INFORMATION SESSION AND WORKSHOP ITEMS

2. **ChristchurchNZ Introduction**..... 5
The time allocated for this Information Session/Workshop is twenty minutes
3. **Community Funding Information Session**..... 7
The time allocated for this Information Session/Workshop is thirty minutes

1. Apologies Ngā Whakapāha

Apologies will be recorded at the meeting.

2. ChristchurchNZ Introduction

Reference Te Tohutoro: 24/945803

Presenter(s) Te Kaipāhō: Ali Adams, Chief Executive, ChristchurchNZ Introduction and Steve Backe-Hansen, GM Marketing, Brand & Communication

1. Detail Te Whakamahuki

Timing	This information session is expected to last for twenty minutes.
Purpose / Origin of the Information Session	This information session is to outline to the Community Board the role of ChristchurchNZ and to discuss how it can work with the Board to help it achieve some of its priorities.
Background	ChristchurchNZ is the city’s sustainable economic development and city profile agency, with the purpose to stimulate sustainable economic growth for a more prosperous Christchurch. It has a crucial role in ensuring the Ōtautahi Christchurch story is told in a consistent and compelling way to maximise impact on the national and global stage. To enable this ChristchurchNZ recently launched a new city positioning and toolkit of resources to share with the wider Christchurch ecosystem.
Key Issues	NA
Next Steps	NA
Useful Links	NA

Attachments Ngā Tāpirihanga

There are no attachments to this coversheet.

Signatories Ngā Kaiwaitohu

Author	Faye Collins - Community Board Advisor
Approved By	Bailey Peterson - Manager Community Governance, Halswell-Hornby-Riccarton

3. Community Funding Information Session

Reference Te Tohutoro: 25/504390







Presenter(s) Te Kaipāhō : Joshua Wharton, Community Funding Team Leader
 Maryanne Lomax, Community Governance Manager

1. Detail Te Whakamahuki

Timing	This information session is expected to last for 30 minutes.
Purpose / Origin of the Information Session	<p>The purpose of this information session is to update elected members on the changes to Council’s contestable funding for the 2025/26 financial year; including the new funding platform, SmartyGrants.</p> <p>Staff will also provide information on the range of community funding that is available to community organisations through Council.</p> <p>This information session is being provided in advance of a comprehensive review that will be presented to the incoming Council and Community Boards in late-2025.</p>
Background	<p>Council’s previous funding platform, Salesforce, was at the end of its lifecycle as an IT platform and was costing Council significant OpX to maintain.</p> <p>The new funding platform, SmartyGrants is used by over half of the TLA’s across New Zealand (<i>including Environment Canterbury and Auckland City</i>), as well as various community trusts and funding providers. It is an industry-leading solution and a social-enterprise, with fees less than ¼ other competitive options available.</p> <p>Compared with the outgoing solution, SmartyGrants will bring a range of improvements to Council’s community funding schemes for the community organisations who apply, staff and elected members alike.</p> <p>Included as Attachment A, staff have provided a summary of the contestable and non-contestable funding schemes that are available to community organisations in Christchurch. The intention is to inform elected members of these offerings, so that in interactions with community organisations, quality advice can be provided.</p>
Key Points	<ul style="list-style-type: none"> • Improved reporting capability. • Ease of application for groups, assessment for staff, and consideration for elected members. <ul style="list-style-type: none"> ○ SmartyFile ○ Mapping tool ○ Viewing previous applications ○ Ability to present a cohesive picture of all CCC funding (<i>and detail where groups are receiving funding from withing Council</i>) • The impact on Community Board splits.

	<ul style="list-style-type: none"> • Presentations by groups before elected member considerations of contestable funding. • Clarification around funding of food, trustees, and other general criteria.
Next Steps	<ul style="list-style-type: none"> • A number of funds are <u>already</u> being administered through Smartygrants. Elected members will note an immediate improvement to the presentation of decision matrices and reports on grant-spend. • The remaining funds will be transferred to the new platform, before decommissioning Salesforce at the start of the new Financial Year. • Staff will collect and review community feedback on the changes made and adjust/improve the new platform and any processes iteratively over the coming year.
Useful Links	<ul style="list-style-type: none"> • https://ccc.govt.nz/culture-and-community/community-funding • https://ccc.smartygrants.com.au/

Attachments Ngā Tāpirihanga

No.	Title	Reference	Page
A  	CCC - Community Funding Scheme Overview	25/479881	9
B  	Environmental Fund Comparisons	25/479883	10
C  	Community Board Splits	25/504132	11

Signatories Ngā Kaiwaitohu

Authors	Josh Wharton - Team Leader Community Funding Maryanne Lomax - Manager Community Governance, Fendalton-Waimairi-Harewood
Approved By	Gary Watson - Manager Community Partnerships

CHRISTCHURCH
CITY COUNCIL

Funding Schemes

CITYWIDE COMMUNITY

STRENGTHENING COMMUNITIES FUND - COMMUNITY
STRENGTHENING COMMUNITIES FUND - ARTS
STRENGTHENING COMMUNITIES FUND - SPORT & RECREATION
DISCRETIONARY RESPONSE FUND
CITY PLACEMAKING FUND
PLACE PARTNERSHIPS FUND

ENVIRONMENTAL

SUSTAINABILITY FUND
BIODIVERSITY FUND
ENVIRONMENTAL PARTNERSHIPS FUND
COMMUNITY WATERWAYS PARTNERSHIP FUND
WASTE MINIMISATION FUND

COMMUNITY BOARDS

STRENGTHENING COMMUNITIES FUND - x6
DISCRETIONARY RESPONSE FUND - x6
YOUTH DEVELOPMENT FUND - x5
KORU FUND - Waitai
OFF THE GROUND FUND - Waihoru & Waipuna

EVENTS

EVENTS & FESTIVALS SPONSORSHIP FUND
SMALL SPORTS EVENTS FUND
EVENTS SEEDING FUND

EXTERNAL FUNDS

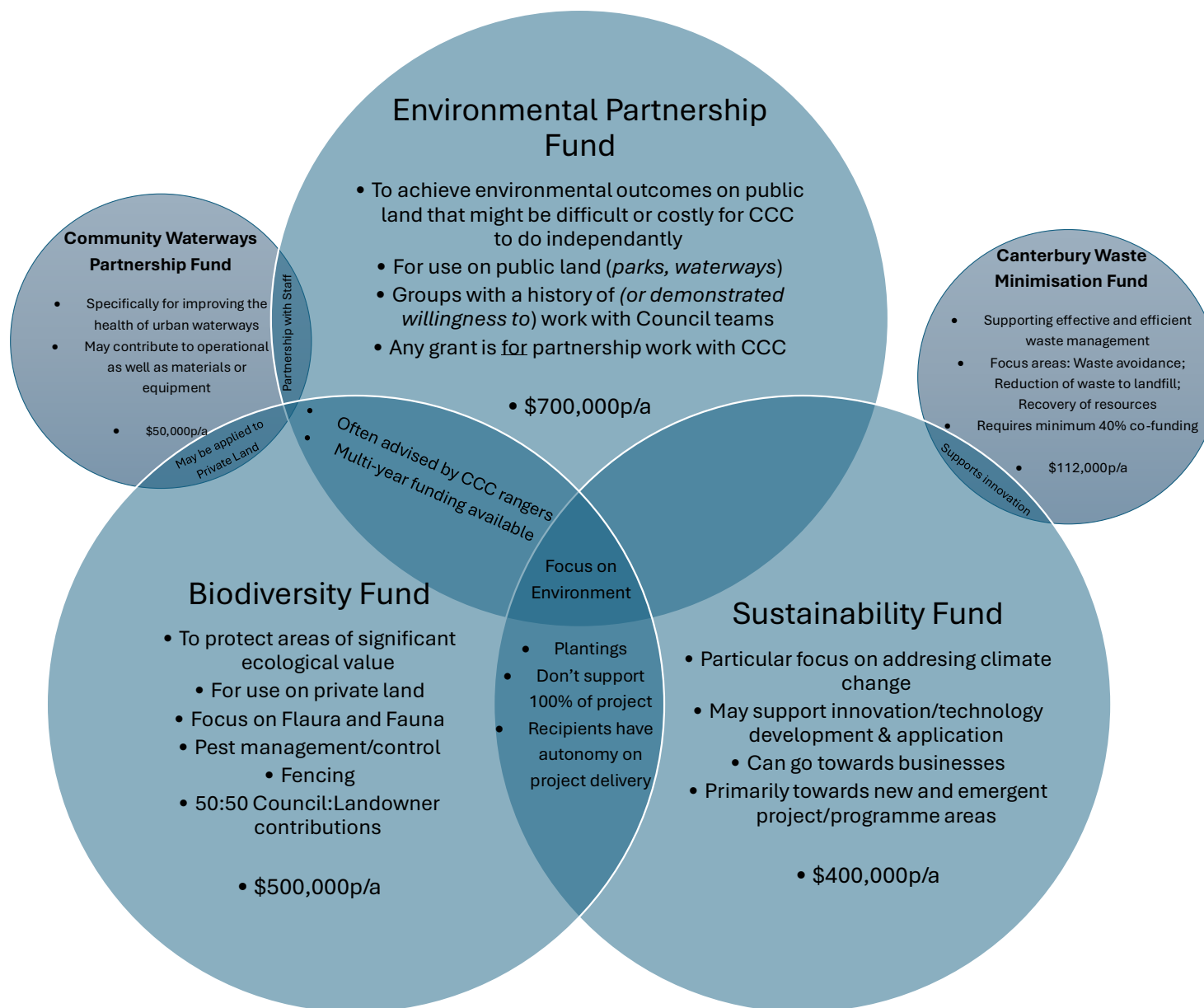
CREATIVE COMMUNITIES SCHEME
MAYOR'S WELFARE CHARITABLE TRUST

OTHER SCHEMES

CAPITAL ENDOWMENT FUND
COMMUNITY LOANS
SPECIAL LOANS
COMMUNITY ORGANISATION RATES REMISSIONS
BUSINESS IMPROVEMENT DISTRICT GRANT

NON-CURRENT SCHEMES

Better Off Fund, Community Activation Fund, Community Resilience Partnership Fund, Red Zone Transformative Land Use Fund, Heritage Fund, Intangible Heritage Fund, Shape Your Place Fund, Arts Culture Sponsorship, City Identity Fund



Board Splits

If all previously split projects are now funded by the one Board where the majority of the people benefiting come from, the differences to each Board's budget is below:

Board	Amount
Banks Peninsula	\$400
Coastal-Burwood-Linwood	\$13,300
Fendalton-Waimairi-Harewood	-\$2,850
Halswell-Hornby-Riccarton	-\$26,400
Papanui-Innes-Central	\$4,200
Spreydon-Cashmere-Heathcote	\$13,450

Note:

This takes into account the group being funded for the same amount as they were last year.

It also includes multi-year funded projects, although, all existing multi-year grants are in their final year of the agreement(s), so the estimated budget impact has been calculated using the same Boards that funded them in Year 1 of their agreement.