
Te Pātaka o Rākaihautū Banks Peninsula Community Board Information Session/Workshop AGENDA

Notice of Information Session/Workshop Te Pānui o te Hui:

Te Pātaka o Rākaihautū Banks Peninsula Community Board Information Session/Workshop will be held on:

Date: Monday 24 March 2025
Time: 10am
Venue: Wairewa Little River Boardroom, 4238 Christchurch
Akaroa Road,
Wairewa Little River

Membership Ngā Mema

Chairperson	Lyn Leslie
Deputy Chairperson	Nigel Harrison
Members	Tyrone Fields Jillian Frater Asif Hussain Cathy Lum-Webb Howard Needham Luana Swindells

19 March 2025

Principal Advisor

Penelope Goldstone
Manager Community Governance
Tel: 941 5689
penelope.goldstone@ccc.govt.nz

Meeting Advisor

Liz Beaven
Community Board Advisor
Tel: 941 6601
liz.beaven@ccc.govt.nz

Website: www.ccc.govt.nz

Note: This forum has no decision-making powers and is purely for information sharing.

To watch the meeting live, or previous meeting recordings, go to:

<https://www.youtube.com/@bankspeninsulacommunityboa3600/streams>

To view copies of Agendas and Notes, go to:

<https://www.ccc.govt.nz/the-council/meetings-agendas-and-minutes/>



TABLE OF CONTENTS NGĀ IHIRANGI

Karakia Tīmatanga	3
1. Apologies Ngā Whakapāha	3
2. Open Forum Te Wā Kōrerorero	3

INFORMATION SESSION AND WORKSHOP ITEMS

3. Orion New Zealand Limited - Update.....	5
The time allocated for this Information Session/Workshop is 20 minutes.	
4. Akaroa Information Centre	7
The time allocated for this Information Session/Workshop is 20 minutes.	
5. Te Pātaka o Rākaihautū Banks Peninsula Destination Management Plan	9
The time allocated for this Information Session/Workshop is 20 minutes.	
6. Project: Flooding in Okains Bay	11
The time allocated for this Information Session/Workshop is 20 minutes.	
7. Plan Change 12 - Coastal Hazards update	13
The time allocated for this Information Session/Workshop is 30 minutes.	
8. Play space renewals in Cass Bay and Corsair Bay- Information session.....	15
The time allocated for this Information Session/Workshop is 15 minutes.	
9. Community Funding Information Session.....	17
The time allocated for this Information Session/Workshop is 30 minutes.	

Karakia Whakamutunga

Karakia Tīmatanga

Whakataka te hau ki te uru	<i>English translation</i>
Whakataka te hau ki te tonga	Cease the winds from the west
Kia mākinakina ki uta	Cease the winds from the south
Kia mātaratara ki tai	Let the breeze blow over the land
E hī ake ana te atakura	Let the breeze blow over the ocean
He tio, he huka, he hau hū	Let the red-tipped dawn come with a sharpened air.
Tihei mauri ora!	A touch of frost, a promise of a glorious day.

1. Apologies Ngā Whakapāha

Apologies will be recorded at the meeting.

2. Open Forum Te Wā Kōrerorero

2.1 Proposed Youth and Multicultural Initiative

Jan Whitehead, Secretary, and Keith Harris, member will speak on behalf of Banks Peninsula sports & Recreation Committee regarding a proposed Youth and Multicultural Initiative.

3. Orion New Zealand Limited - Update

Reference Te Tohutoro: 24/2147118

Presenter(s) Te Kaipāhō: Michelle Flanagan

1. Detail Te Whakamahuki

Timing	This information session is expected to last for 20 minutes.
Purpose / Origin of the Information Session	At the Board’s 11 November 2024 meeting, the Chairperson agreed to have an Information Session presentation from Orion New Zealand Limited to discuss community concerns. The session will include Orion’s summary of works planned for Te Pātaka o Rākaihautū Banks Peninsula and their asset management plan.
Confidentiality	The workshop and any shared information are not confidential.
Background	Orion owns and operates the electricity distribution network that provides power to Central Waitaha Canterbury, including Banks Peninsula. The electricity network extends over 8,000 square kilometres and delivers electricity to more than 228,000 homes, and businesses.
Key Issues	Key issues to be shared by Board at meeting.
Next Steps	Not applicable.
Useful Links	https://www.oriongroup.co.nz/

Attachments Ngā Tāpirihanga

There are no attachments to this coversheet.

Signatories Ngā Kaiwaitohu

Author	Liz Beaven - Community Board Advisor
Approved By	Penelope Goldstone - Manager Community Governance, Banks Peninsula

4. Akaroa Information Centre

Reference Te Tohutoro: 25/503846

Presenter(s) Te Kaipāhō: Steffi Brightwell, Akaroa Information Centre

1. Detail Te Whakamahuki

Timing	This information session is expected to last for 20 minutes.
Purpose / Origin of the Information Session	The purpose of this report is to provide Te Pātaka o Rākaihautū Banks Peninsula Community Board an update on the Akaroa Information Centre Trial Project. This report is staff generated.
Background	Members of the Akaroa Community identified a need for a service that offers information to visitors and the local community. Akaroa Resource Collective have been issued with a lease to occupy the Community Governance Office at the Akaroa Service Centre for the purpose of a trial Information Centre between 1 December 2024 – 31 May 2025. A representative from Akaroa Information Centre and staff will provide an update on how the Information Centre Trial is progressing.
Key Issues	<ul style="list-style-type: none"> Long term establishment of Akaroa Information Centre.
Next Steps	<ul style="list-style-type: none"> Not applicable.
Useful Links	<ul style="list-style-type: none"> Not applicable.

Attachments Ngā Tāpirihanga

There are no attachments to this coversheet.

Signatories Ngā Kaiwaitohu

Author	Steffi Brightwell - Community Development Advisor
Approved By	Penelope Goldstone - Manager Community Governance, Banks Peninsula

5. Te Pātaka o Rākaihautū Banks Peninsula Destination Management Plan

Reference Te Tohutoro: 24/2081317

Presenter(s) Te Kaipāhō: Patrick O’Sullivan, Destination & Experience Manager,
ChristchurchNZ

1. Detail Te Whakamahuki

Timing	This information session is expected to last for 20 minutes.
Purpose / Origin of the Information Session	The purpose of the Information Session is to update the Board on the implementation of the Te Pātaka o Rākaihautū Banks Peninsula Destination Management Plan.
Confidentiality	The workshop and any shared information are not confidential.
Background	Te Pātaka o Rākaihautū Banks Peninsula Destination Management Plan (DMP) was developed through extensive community consultation from late 2022 to late 2023. It was endorsed by the Community Board in November 2023 and ChristchurchNZ commenced implementation in February 2024, alongside the Ōtautahi Christchurch Waitaha Canterbury Destination Management Plan.
Key Issues	Not applicable.
Next Steps	Not applicable.
Useful Links	https://www.christchurchnz.com/destination-management-plans

Attachments Ngā Tāpirihanga

There are no attachments to this coversheet.

Signatories Ngā Kaiwaitohu

Author	Liz Beaven - Community Board Advisor
Approved By	Penelope Goldstone - Manager Community Governance, Banks Peninsula

6. Project: Flooding in Okains Bay

Reference Te Tohutoro: 24/2339912


Presenter(s) Te Kaipāhō: Sam Hampton, Lecturer in Geology, University of Canterbury
 Dane Moir, Community Development Advisor

1. Detail Te Whakamahuki

Timing	This information session is expected to last for 20 minutes.
Purpose / Origin of the Information Session	<p>Present key findings from a 2024 research study on the current state of drainage systems within Okains Bay valley floor and the observed impacts during minor rainfall events. (Attachment A).</p> <p>Seek support for a strategic approach for the improvement and maintenance of the drainage system to provide resilience within the Okains Bay community.</p>
Confidentiality	The workshop and any shared information is not confidential.
Background	<p>Staff have been engaging with the Okains Bay community to better understand their needs. Flooding has consistently been the top issue raised. In 2024 staff attended a University of Canterbury (UC) presentation from third year students to understand their research findings. In order to further this, staff from CCC and UC have been working with community to better understand how to utilise this information. As the result of a successful community meeting after the initial presentation, this presentation has been adapted to reflect community views and to serve as a conversation starting point to assist with the development of a wider strategic plan. At present work is done by Council staff but there is a lack of a wider strategic vision on how to manage the issues raised by community. While there has been work by Council teams, without a strategic approach this work has not met the expectations of the community.</p> <p>Okains Bay valley floor has a drainage system connecting hillslope catchments across the valley floor to the Opara River and estuary. Drainage crosses both private and public land and road reserve, and its original design was reliant on maintaining depth (removal of accumulated sediment) and connections between sections.</p> <p>There has not been a sufficient strategic approach to the drainage network, as a whole, since amalgamation of the BP District with the Christchurch City Council. And where maintenance has occurred it has been discrete fixes, commonly interrupting originally design flow pathways or modifying connections that have caused unintended consequences (directed water flows and increased sedimentation and resultant flooding in specific areas).</p>
Key Issues	<ul style="list-style-type: none"> • Flooding • Sediment input in Okains Bay estuary and ecological environments • Sediment accumulation on roading infrastructure • Standing water post rainfall events • Lack of ongoing maintenance of an interconnected system (holistic maintenance required)

	<ul style="list-style-type: none"> Emergency access during rainfall events
Next Steps	<ul style="list-style-type: none"> Not applicable.
Useful Links	

Attachments Ngā Tāpirihanga

No.	Title	Reference	Page
A 	Research for Resilient Environments and Communities - Impacts, Assessments and Recommendations for Stormwater Drainage Management in Okains Bay (<i>Under Separate Cover</i>)	25/434872	

Signatories Ngā Kaiwaitohu

Author	Dane Moir - Community Development Advisor
Approved By	Penelope Goldstone - Manager Community Governance, Banks Peninsula

7. Plan Change 12 - Coastal Hazards update

Reference Te Tohutoro: 24/2285140

Sarah Oliver (Team Leader, City Planning),

Presenter(s) Te Kaipāhō: Anita Hansbury (Senior Policy Planner),
 Emily Stevens (Policy Planner)

1. Detail Te Whakamahuki

Timing	This information session is expected to last for 30 minutes.
Purpose / Origin of the Information Session	The purpose of this information session is to update the Community Board on the status of Plan Change 12 – Coastal Hazards (PC12), and to discuss staff’s revised approach to the Plan Change.
Background	<ul style="list-style-type: none"> The Council must give effect to the New Zealand Coastal Policy Statement (NZCPS). The NZCPS requires the Council to manage coastal hazard risks by locating new development away from areas prone to such risks, whilst enabling people and communities to provide for their social, economic, and cultural wellbeing and their health and safety. The current District Plan provisions enable a range of land use activities, subdivision and earthworks in areas that are at increasing risk of coastal inundation from storm surges, rising groundwater and tsunamis. Changes to the District Plan were first considered through the Christchurch Replacement District Plan process but the proposed coastal provisions were withdrawn in September 2015 by an Order in Council amendment. It was recognised that more time was needed for engagement with the community on the science and options. The Council was directed to develop coastal hazards provisions ‘as soon as is reasonably practicable’. Further modelling and assessment of the risks from coastal hazards was subsequently undertaken with risk assessments finalised in 2017. Since this time, the Council has commenced its adaptation planning programme, identified draft options for new provisions in the District Plan, and sought feedback from the community (during 2021). Work on PC12 was however paused due to the requirement to develop Plan Change 14 (PC14) Housing and Business Choice. <p>Since the conclusion of the PC14 hearings, staff have refocused to advance PC12, continuing to develop the evidence base, respond to early engagement feedback, and reconsider the options presented in the 2021 engagement.</p>
Key Issues	<ul style="list-style-type: none"> Council must decide which activities should continue to be enabled under the District Plan, having regard to the known risks to people and property while recognising that the effects from sea level rise will impact areas at different stages and to different extents. Further to that, adaption planning is on-going, and future changes to legislation to address climate change are expected. The plan change (through the section 32 evaluation of options) is required to assess not only the impacts of sea and groundwater levels rising on land (property) and

	<p>infrastructure, but importantly on people’s health and well-being. To inform the evaluation, greater certainty around the likelihood and effects of coastal hazards on infrastructure and private property is being sought. The social-economic costs and benefits are also being evaluated in more detail, recognising the potential for social inequity to increase as a consequence of more restrictive management approaches.</p>
Next Steps	<ul style="list-style-type: none"> • On-going development of the evidence to inform the identification and evaluation of different management approaches under the District Plan (Jan-August 2025). • Drafting of potential changes to the District Plan (options). • Engagement on the (updated) draft options, including testing the options with affected communities, allowing for a comprehensive understanding of which option will have the least negative social impact (April/May 2025). • Finalisation of the draft s32 and proposed provisions (Sept 2025). • Consultation on the plan change. • Notification of the plan change (to be decided by new Council).
Useful Links	<ul style="list-style-type: none"> • Objectives: New Zealand Coastal Policy Statement 2010 publication.

Attachments Ngā Tāpirihanga

There are no attachments to this coversheet.

Signatories Ngā Kaiwaitohu

Authors	<p>Emily Stevens - Policy Planner Anita Hansbury - Senior Policy Planner Sarah Oliver - Team Leader City Planning</p>
Approved By	<p>Mark Stevenson - Acting Head of Planning & Consents</p>

8. Play space renewals in Cass Bay and Corsair Bay- Information session

Reference Te Tohutoro: 25/157352

Presenter(s) Te Kaipāhō: Holly Whitaker Project Manager- Community Parks

1. Detail Te Whakamahuki

Timing	This information session is expected to last for 15 minutes.
Purpose / Origin of the Information Session	The purpose of this briefing is to provide the Board with an update on the planned renewals at Motu-Kauati-iti (Corsair Bay) and Motu- Kauati-raki (Cass Bay) play spaces. These projects are funded in Project ID 73987 (Corsair) and ID 73988 (Cass).
Background	The renewal of both play spaces forms part of the Community Parks Planned Play Space Renewal Programme. These play spaces are being renewed based on their age and condition. Both projects are being planned and executed simultaneously due to their close geographical proximity, as the local community is believed to have an interest in both areas and because both locations share a similar cultural narrative.
Key Points	<p>Cass Bay</p> <ul style="list-style-type: none"> The play space renewal will require Resource Consent The contours of the land limit the usable space The current boat platform is a bespoke item, fitted to the contours of the land, so a custom replacement will need to be built Accessible items need to be included in the renewal More seating has been requested. <p>Corsair Bay</p> <ul style="list-style-type: none"> The play space renewal will require Resource Consent Existing storm water issues are under investigation (requiring the removal of the slide) and will be rectified prior to construction The carpark is being resurfaced and improved during the storm water pipe remediation work, undertaken by the Three Waters Unit (2025) The project also includes an upgrade to the informal track above the play area that connects the upper carpark to the play space Contours of the land limit flat space, but provide play opportunities Incorporating the cultural korero will be an important factor in the design.
Next Steps	<ul style="list-style-type: none"> Due to the bespoke elements of the play features, staff have chosen to pursue the 'design build' procurement model for both play spaces Tenders will be reviewed in April and consultation on the concept plans will be held in June/ July 2025

	<ul style="list-style-type: none"> • Staff hope to seek Board approval for the designs in September • Resource consent and archaeological authority will be sought at the end of 2025 and construction is planned for February 2026, to ensure the play spaces remain open over the Christmas school holidays.
Useful Links	<ul style="list-style-type: none"> • Cultural narrative information https://my.christchurchcitylibraries.com/ti-kouka-whenua/tapoa-motu-kauati-itj/

Attachments Ngā Tāpirihanga

There are no attachments to this coversheet.

Signatories Ngā Kaiwaitohu

Author	Holly Whitaker - Project Manager - Community Parks
Approved By	Bridie Gibbings - Manager Operations - Parks Development Al Hardy - Manager Community Parks

9. Community Funding Information Session

Reference Te Tohutoro: 25/504250




Presenter(s) Te Kaipāhō : Joshua Wharton, Community Funding Team Leader
 Maryanne Lomax, Community Governance Manager

1. Detail Te Whakamahuki

Timing	This information session is expected to last for 30 minutes.
Purpose / Origin of the Information Session	<p>The purpose of this information session is to update elected members on the changes to Council’s contestable funding for the 2025/26 financial year; including the new funding platform, SmartyGrants.</p> <p>Staff will also provide information on the range of community funding that is available to community organisations through Council.</p> <p>This information session is being provided in advance of a comprehensive review that will be presented to the incoming Council and Community Boards in late-2025.</p>
Background	<p>Council’s previous funding platform, Salesforce, was at the end of its lifecycle as an IT platform and was costing Council significant operational budget to maintain.</p> <p>The new funding platform, SmartyGrants is used by over half of the Territorial Local Authorities (TLA’s) across New Zealand (<i>including Environment Canterbury and Auckland City Council</i>), as well as various community trusts and funding providers. It is an industry-leading solution and a social-enterprise, with fees less than ¼ other competitive options available.</p> <p>Compared with the outgoing solution, SmartyGrants will bring a range of improvements to Council’s community funding schemes for the community organisations who apply, staff and elected members alike.</p> <p>Included as Attachment A, staff have provided a summary of the contestable and non-contestable funding schemes that are available to community organisations in Christchurch. The intention is to inform elected members of these offerings, so that in interactions with community organisations, quality advice can be provided.</p>
Key Points	<ul style="list-style-type: none"> • Improved reporting capability. • Ease of application for groups, assessment for staff, and consideration for elected members. <ul style="list-style-type: none"> ○ SmartyFile ○ Mapping tool ○ Viewing previous applications ○ Ability to present a cohesive picture of all Council funding (<i>and detail where groups are receiving funding from within Council</i>) • The impact on Community Board splits.

	<ul style="list-style-type: none"> • Presentations by groups before elected member considerations of contestable funding. • Clarification around funding of food, trustees, and other general criteria.
Next Steps	<ul style="list-style-type: none"> • A number of funds are <u>already</u> being administered through Smartygrants. Elected members will note an immediate improvement to the presentation of decision matrices and reports on grant-spend. • The remaining funds will be transferred to the new platform, before decommissioning Salesforce at the start of the new Financial Year. • Staff will collect and review community feedback on the changes made and adjust/improve the new platform and any processes iteratively over the coming year.
Useful Links	<ul style="list-style-type: none"> • https://ccc.govt.nz/culture-and-community/community-funding • https://ccc.smartygrants.com.au/

Attachments Ngā Tāpirihanga

No.	Title	Reference	Page
A 	CCC - Community Funding Scheme Overview	25/479881	19
B 	Environmental Fund Comparisons	25/479883	20
C 	Community Board Splits	25/504132	21

Signatories Ngā Kaiwaitohu

Authors	Josh Wharton - Team Leader Community Funding Maryanne Lomax - Manager Community Governance, Fendalton-Waimairi-Harewood
Approved By	Gary Watson - Manager Community Partnerships

CHRISTCHURCH
CITY COUNCIL

Funding Schemes

CITYWIDE COMMUNITY

STRENGTHENING COMMUNITIES FUND - COMMUNITY
STRENGTHENING COMMUNITIES FUND - ARTS
STRENGTHENING COMMUNITIES FUND - SPORT & RECREATION
DISCRETIONARY RESPONSE FUND
CITY PLACEMAKING FUND
PLACE PARTNERSHIPS FUND

ENVIRONMENTAL

SUSTAINABILITY FUND
BIODIVERSITY FUND
ENVIRONMENTAL PARTNERSHIPS FUND
COMMUNITY WATERWAYS PARTNERSHIP FUND
WASTE MINIMISATION FUND

COMMUNITY BOARDS

STRENGTHENING COMMUNITIES FUND - x6
DISCRETIONARY RESPONSE FUND - x6
YOUTH DEVELOPMENT FUND - x5
KORU FUND - Waitai
OFF THE GROUND FUND - Waihoru & Waipuna

EVENTS

EVENTS & FESTIVALS SPONSORSHIP FUND
SMALL SPORTS EVENTS FUND
EVENTS SEEDING FUND

EXTERNAL FUNDS

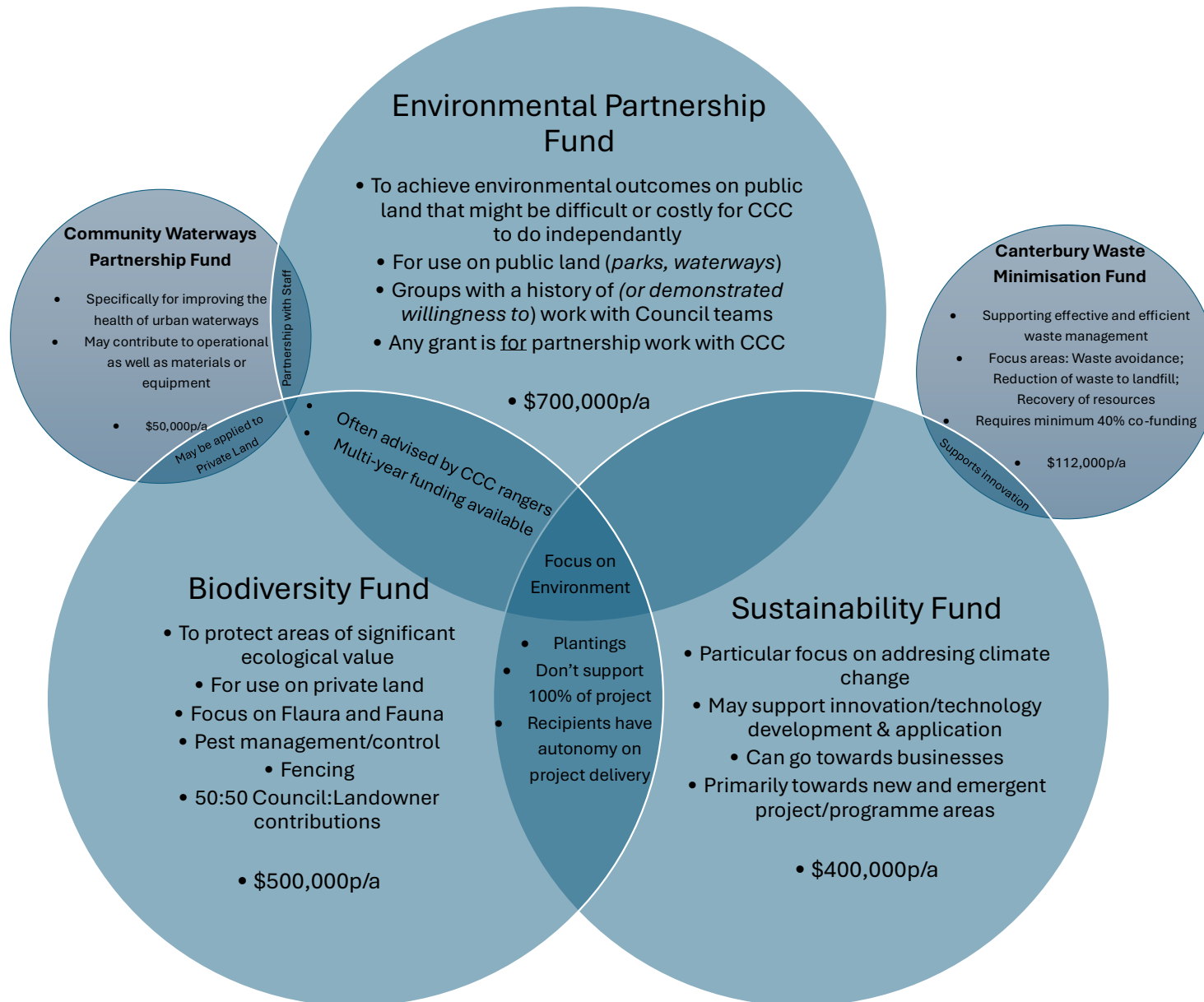
CREATIVE COMMUNITIES SCHEME
MAYOR'S WELFARE CHARITABLE TRUST

OTHER SCHEMES

CAPITAL ENDOWMENT FUND
COMMUNITY LOANS
SPECIAL LOANS
COMMUNITY ORGANISATION RATES REMISSIONS
BUSINESS IMPROVEMENT DISTRICT GRANT

NON-CURRENT SCHEMES

Better Off Fund, Community Activation Fund, Community Resilience Partnership Fund, Red Zone Transformative Land Use Fund, Heritage Fund, Intangible Heritage Fund, Shape Your Place Fund, Arts Culture Sponsorship, City Identity Fund



Board Splits

If all previously split projects are now funded by the one Board where the majority of the people benefiting come from, the differences to each Board's budget is below:

Board	Amount
Banks Peninsula	\$400
Coastal-Burwood-Linwood	\$13,300
Fendalton-Waimairi-Harewood	-\$2,850
Halswell-Hornby-Riccarton	-\$26,400
Papanui-Innes-Central	\$4,200
Spreydon-Cashmere-Heathcote	\$13,450

Note:

This takes into account the group being funded for the same amount as they were last year.

It also includes multi-year funded projects, although, all existing multi-year grants are in their final year of the agreement(s), so the estimated budget impact has been calculated using the same Boards that funded them in Year 1 of their agreement.

Karakia Whakamutunga

Closing Prayer

Unuhia, unuhia Unuhia ki te uru tapu nui Kia wātea, kia māmā, te ngākau, Te tinana te wairua i te ara takatā Koia rā e Rongo, whakairia ake ki runga Kia tina! TINA! Hui e! TĀIKI E!	Draw on, draw on, Draw on the supreme sacredness To clear, to free the heart, the body and the spirit of mankind Rongo, suspended high above us (i.e. in 'heaven') Draw together! Affirm!
---	---