
Workshop - Banks Peninsula Water Management Zone
Committee
MINUTES ATTACHMENTS

Date:

Tuesday 17 September 2024

Time:

5:11 pm

Venue:

Lyttelton Community Boardroom, 25 Canterbury Street, Lyttelton, Christchurch

TABLE OF CONTENTS NGĀ IHIRANGI	PAGE
2. Coastal Hazards Adaptation Plan	
A. Coastal Hazards Adaptation Plan Presentation - 17 September 2024.....	3
3. Erosion and Sediment Control, and Soil Conservation Resource Development	
A. Erosion and Sediment Control, and Soil Conservation Resource Development - 17 September 2024	18

Coastal adaptation: Whakaraupō Lyttelton Harbour and Koukourarata Port Levy

Background

2



Sea level rise and vertical land movement rates



- ~10cm SLR in the last 15 years
- +14-23cm by 2050
- +38cm-1m by 2100

Area	Projected SLR without VLM 2020 - 2050	Projected SLR with VLM 2020 - 2050
Waimari Beach - Brooklands	14 - 23cm	26 - 35cm
Brighton Spit - Bromley		37 - 46cm
Ferrymead		22 - 31cm
Mt Pleasant - Taylors Mistake		23 - 32cm
Lyttelton & Port Levy		26 - 35cm

Exposure of a sample of asset types to coastal hazards

Asset	20cm of sea level rise		1m of sea level rise		Replacement value of at-risk assets with 20cm of SLR
	Exposed to hazard risk	Highly vulnerable	Exposed to hazard risk	Highly vulnerable	
Residential buildings	19,367 buildings (16%)	3,216 (3%)	24,973 (21%)	5,177 (4%)	\$14b
Roads	631km (24%)	183km (7%)	772km (29%)	316km (12%)	\$3.2b
Water supply network pipes	825km of pipes (29%)	188km (7%)	991km (35%)	192km (7%)	
Stormwater network pipes	187km of pipes (28%)	19km (3%)	208km (31%)	33km (5%)	
Wastewater network pipes	449km of pipes (16%)	379km (14%)	TBC	TBC	

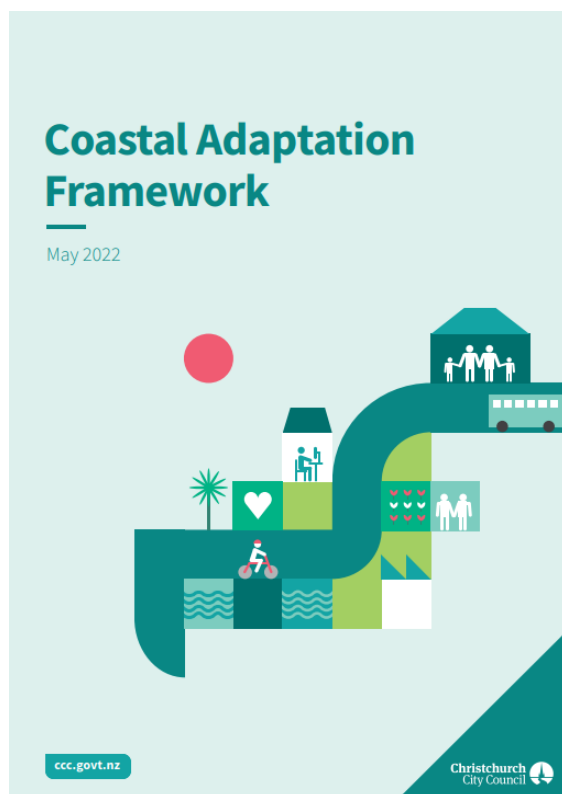
Source: REX

CHAP programme

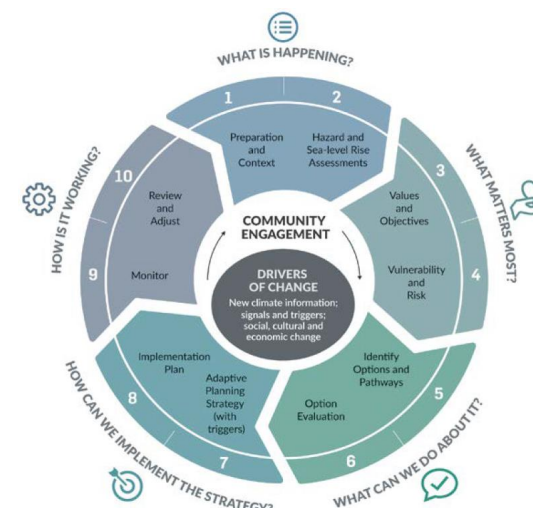
Purpose: To work with low-lying inland and coastal communities that will be impacted by coastal flooding, coastal erosion and rising groundwater to develop adaptation pathways that plan for the impacts of sea level rise.



Policy approach

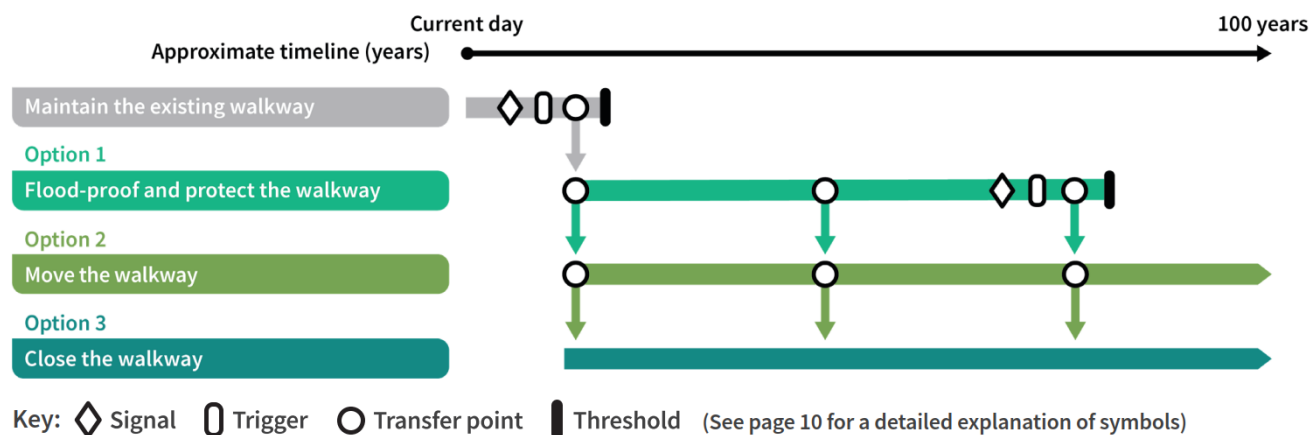


- Uphold Te Tiriti o Waitangi
- Develop local plans with local communities and for local environments
- **Focus on public assets that contribute to the health, safety and wellbeing of communities**
- Be flexible and responsive
- Recognise intergenerational equity issues
- Prioritise natural and nature-based options
- Consider long-term sustainability



Dynamic Adaptive Policy Pathways (DAPP)

- Relies on signals and triggers, not timelines
- Identifies preferred pathways and adaption options **over 100 years**, but these are reassessed as signals and triggers are hit
- So, we know investment will be needed but not the exact timing or nature of longer-term options.



Co-creation approach

Coastal Panel

Analyse adaptation options and identify preferred adaptation pathways for a Council decision. Community and rūnanga members (three young people).

Specialist and Technical Advisory Group (STAG)

Council asset owners, and technical specialists (engineering, coastal science, economics, wellbeing).



City Council

Process



Coastal Hazard Adaptation Planning in Teddington

"I love being by the sea, the walkways, the natural environment". These are the things that make it such a "beautiful, tranquil place to live".

"We like the fishing and walking around the waterfront" and "the native bush, rocky cliffs and the working farm landscape" that make this a great place to live, work and play.

"Teddington is at risk, as it floods now. Rising water levels could cut off access into and out of the bays."

"Need to start building new roading protection now. Design a new route around Teddington now."



Teddington

This is an artist's impression of what the future might look like in Teddington as we adapt important public assets to coastal hazards over time. The following pages go into more detail about the Coastal Panel's preferred pathway for each asset.

- 1 Governors Bay Teddington Road**
Not a lot is going to change for a while. In the future, we might need to accept the road being impacted by flooding and other coastal hazards more often.
- 2 Charteris Bay Road and Gebbies Pass Road**
We can maintain the road as it is for a while, before raising it to reduce impacts of coastal hazards.



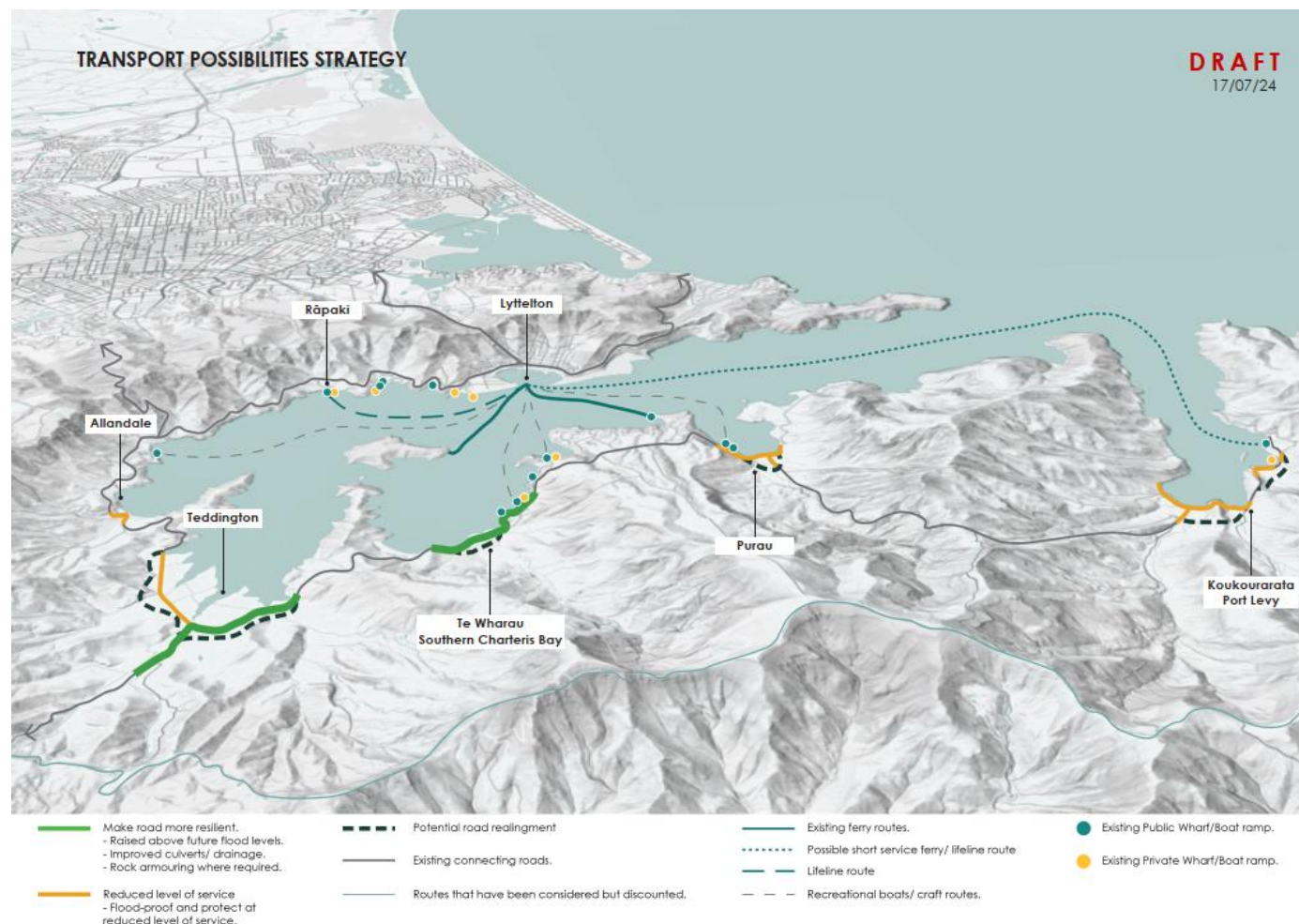
Planning across the Adaptation Area

13



Community Objective: infrastructure

Ensure infrastructure, such as roads, jetties, ... are sufficiently resilient to support the health, safety and wellbeing of communities now and in the future.



**Upcoming
consultation
17 Oct – 17 Nov**

15



17 September 2024
– BPZC workshop

Erosion and sediment control and soil conservation toolkit



April 2024 – Joint workshop with CWMZ and stakeholders

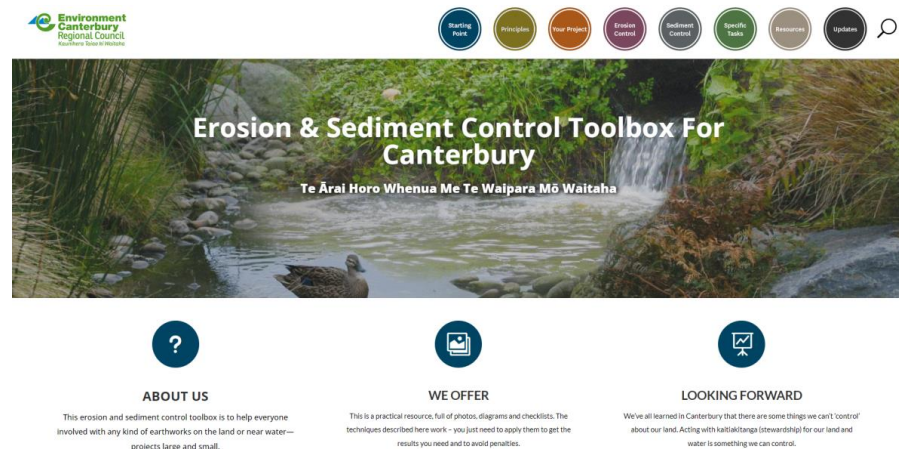


\$10K ZCAP funding for the development of a resource led by the zone committees, Whakaora Healthy Harbour and Te Hapū o Ngāti Wheke/Rāpaki Rūnanga.



Next step – scope up the project

BACKGROUND



ESC Toolkit

Launched in 2017 to “help everyone involved with any kind of earthworks on the land or near water—projects large and small”

Designed for information to be added.

Well used – 10K active users 1 Jan 2024-10 Sep 2024

Erosion and sediment control, and soil conservation resource development

PROJECT BRIEF - DRAFT

Purpose, outcomes and outputs

Purpose: Document and share practical knowledge on erosion control, soil conservation, pasture management, and biodiversity enhancement in the Port Hills region specific to loess soils, for landowners.

Outcome: Port Hills landowners have access to information on how to manage Erosion and Sediment Control, and soil conservation issues on their properties.

Output: A detailed report providing an easy-to-read compilation of issues, solutions, and case studies tailored for landowners. This can then be used to develop an end product.

Scope

Scope Statement: Gather and compile insights and solutions on erosion control, revegetation, soil conservation, forestry, and land management specific to the Port Hills and loess soils. Prepare a report that presents these tools and solutions in a user-friendly format for Port Hills landowners which can be readily adapted into suitable resource/toolkit.

IN SCOPE

- Literature and resource review incl. ESC toolkit.
- Interviews with selected practitioners to capture solutions and case studies not otherwise documented.
- Turn information into easy-to-read content.

OUT OF SCOPE

- Developing a final resource. It is likely that additional funding would be required. This would be the next stage of the project.

Considerations

- ESC Toolkit is widely used and could house new information – cost effective option for sharing information
- Constraint – funding may not cover costs to produce the end product
- Constraint – CWMS Review puts pressure on to complete scoping by the end of this year.

Resources

- \$10,000
- Staff hours from Zone Facilitator and WHH
- ESC online toolkit
- TBC

Key tasks

When	What	Who
Oct 24	1. ESC Toolkit Review	TBC – may be done in-house
Nov-Mar 25	2. Literature and resource review and collation	TBC - Investigate options e.g. Summer School student through WHH, use some of ZCAP funding for a consultant
Nov-Mar 25	3. Interviews to collect information or draft case studies	TBC – as above
Mar-Apr 25	4. Report production - take collected information and turn this into easy-to-read content; and reviewed	Consultant – specialist writer
Apr 25	5. Confirm Stage 2 incl. funding	TBC

Stakeholders

Project Lead	BPZC Zone Facilitator
Project Oversight	BPZC, CWZC, Whaka-Ora Healthy Harbour and Te Hapū o Ngāti Wheke/Rāpaki Rūnanga
Rūnanga	Rāpaki (oversight), Ōnuku, Koukourarata, Wairewa, Ngāi Tūāhuriri, Taumutu?
Subject matter experts (SME): Agencies, organisations, consultants and institutes	ECan, CCC, DOC, UC, Lincoln Uni, Manaaki Whenua, EOS Ecology, CAP
SME: Landowners	TBC
Community Groups, Trusts, Organisations	OHRN, CSCG, AHEIT, Te Kāhahu Kura, BPCT, Te Ahu Pātiki CT, Living Springs, TBC

Attachment A Item 3

Feedback



QUESTIONS?



COMMENTS?

Next steps

Continue proposal development with Christchurch West Melton Zone Committee, Te Hapū o Ngāti Wheke and Whaka-Ora Healthy Harbour.