
Workshop - Banks Peninsula Water Management Zone
Committee
MINUTES ATTACHMENTS

Date:

Tuesday 21 May 2024

Time:

4 pm

Venue:

Lyttelton Community Boardroom, 25 Canterbury
Street, Lyttelton

TABLE OF CONTENTS NGĀ IHIRANGI	PAGE
2. Whakaora Healthy Harbour Workshop	
A. Whakaora Healthy Harbour Presentation	3

Whakaraupō – A pātaka or playground?

Brent Barrett – Whaka-Ora Programme Manager



WHAKA-ORA
Healthy Harbour, Ki Uta Ki Tai



Te Rūnanga o NGĀI TAHU



Environment
Canterbury
Regional Council
Kaunihera Taiao ki Waitaha



Christchurch
City Council



Lyttelton
Port
Company



Te Hapū o
Ngāti Wheke
RĀPAKI

Whāinga – Goals – Whaka-Ora HH

- **Abundant** native flora/fauna
- **Healthy** waterways and ecosystems
- **Interconnected** communities/visitors



Pou – Guiding principles.



Change-making

Change is needed — and everyone can be change-maker, with the power to influence the future state of Whakaraupō/Lyttelton Harbour.



Mō tātou, ā, mō kā uri ā muri ake nei - For us and our children after us

Restoring the catchment is a lofty vision that will take more than one generation to fulfil.



Collaboration

Working together is important to creating real, sustained change for our harbour.

Focus on ecological bands.

Ecological Bands Impacted Key



Rocky outcrops
and forests



Hills and
lowlands



Wetlands and
saltmarsh



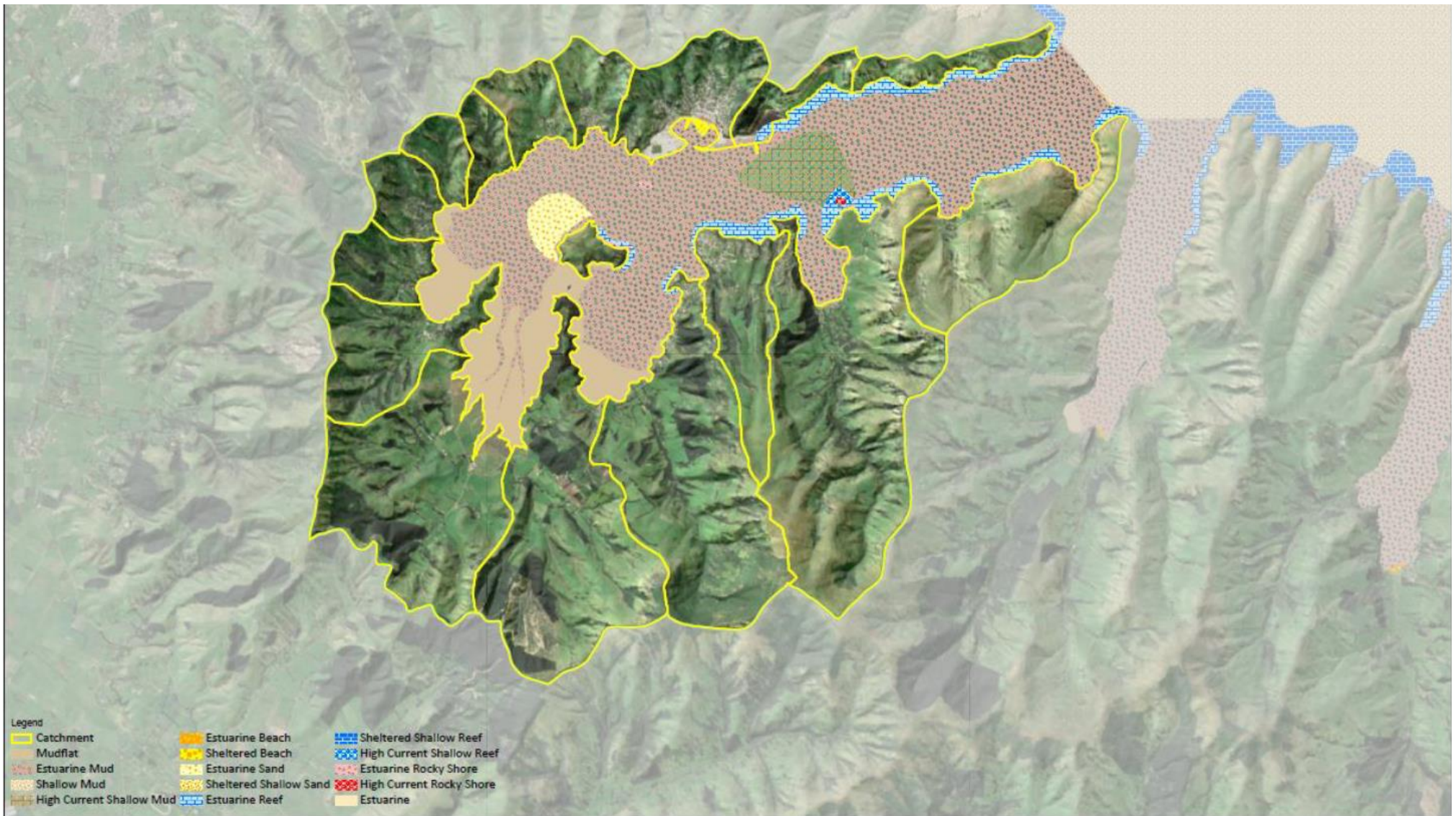
Taihua/
foreshore

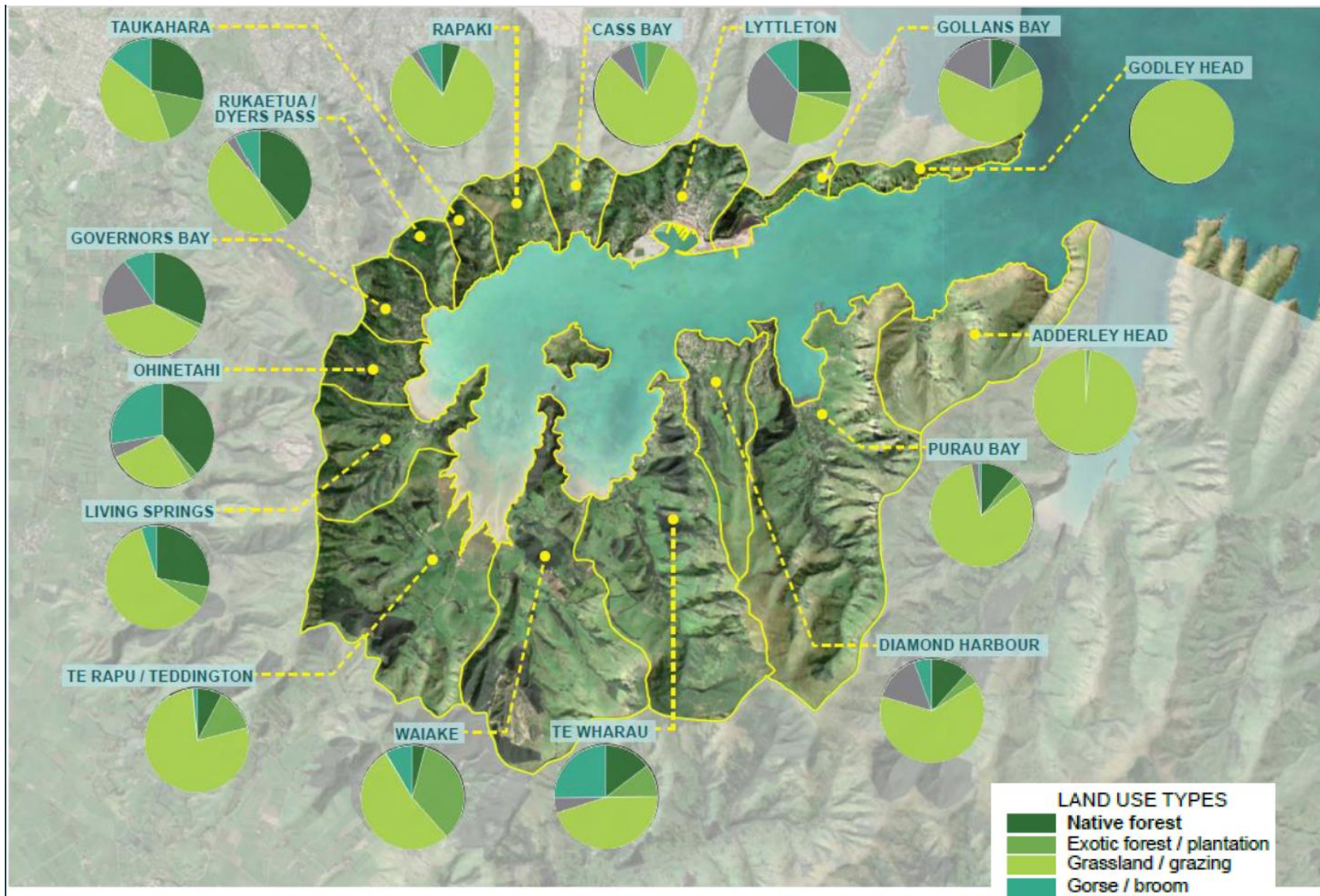


Harbour



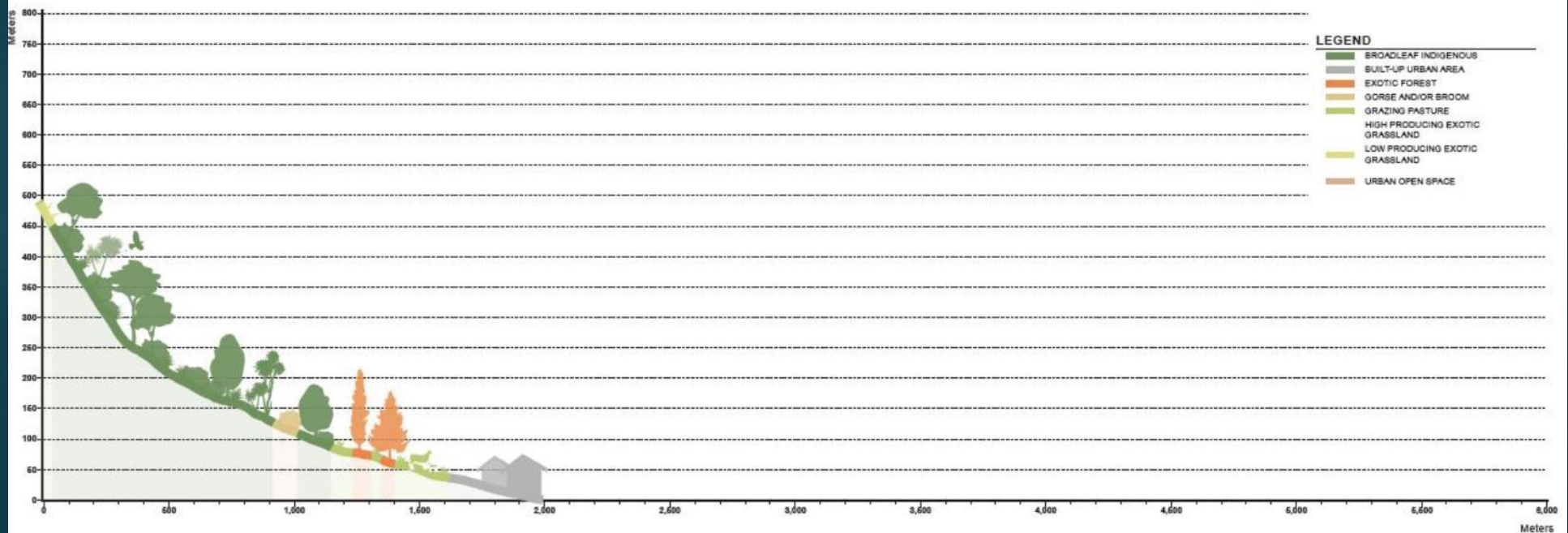
Streams





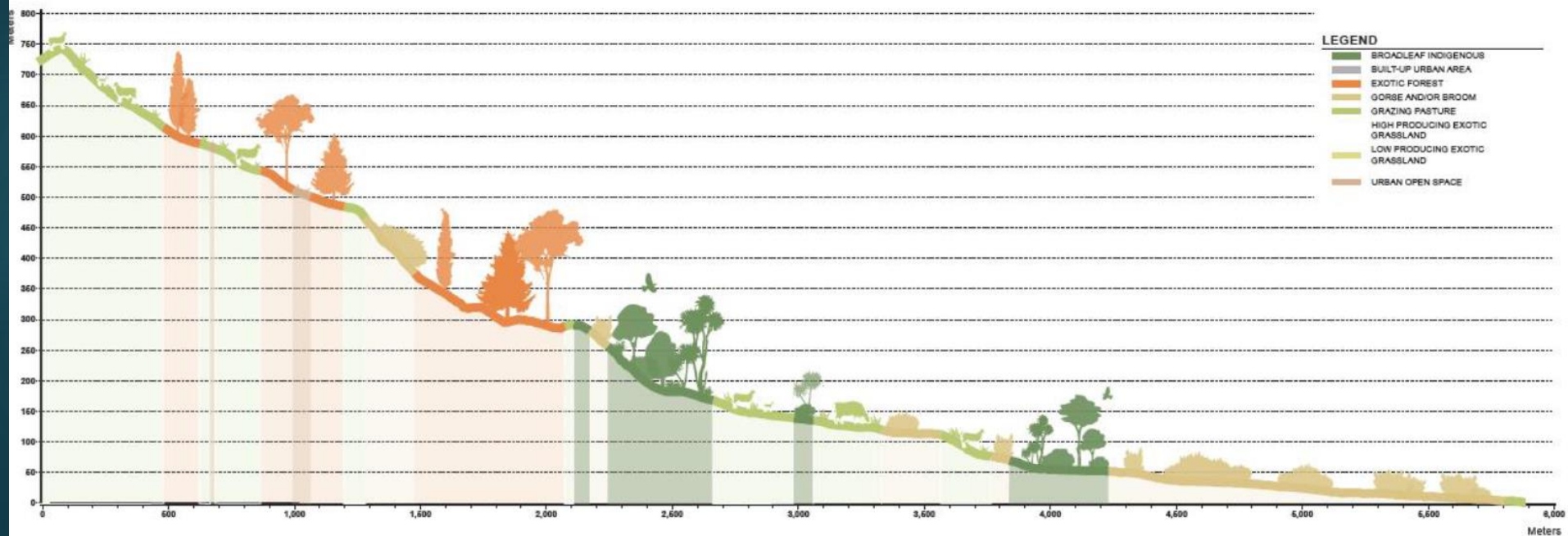
Dyers Pass – Ki Uta Ki Tai

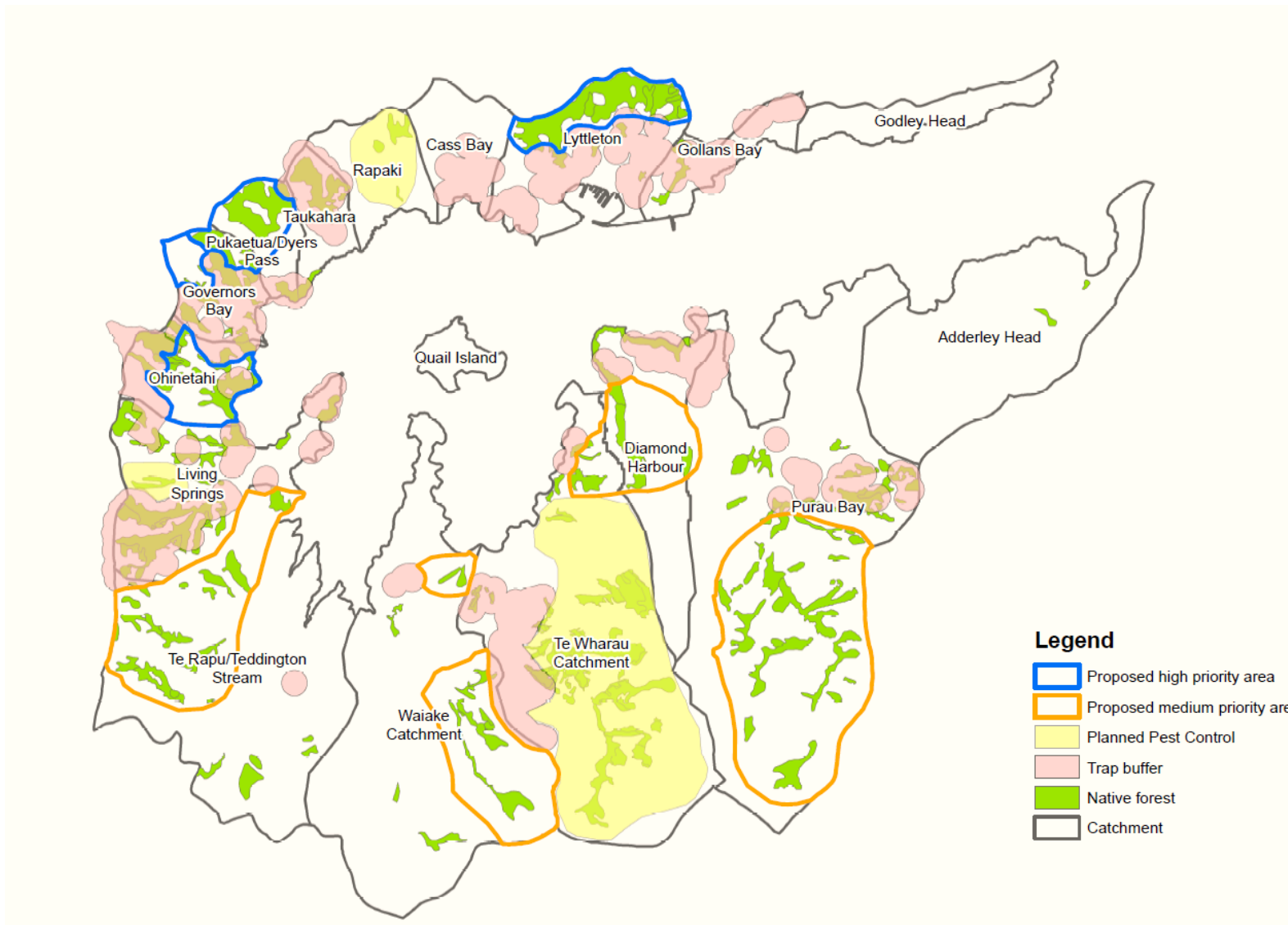
CATCHMENT LOCATION



Te Wharau – Orton Bradley

CATCHMENT LOCATION







**EROSION
IMPACTS
LANDS AND
MARINE**





Pollutants and nutrients

Soil and debris

Ecosystem health/function

GOOD | BAD | UGLY





Whaka-Ora | Healthy Harbours vision is Co-Governance in action

