

**Waihoru**  
**Spreydon-Cashmere-Heathcote Community Board**  
**MINUTES ATTACHMENTS**

---

**Date:** Thursday 10 August 2023  
**Time:** 4 pm  
**Venue:** Boardroom, Beckenham Service Centre,  
66 Colombo Street, Beckenham

---

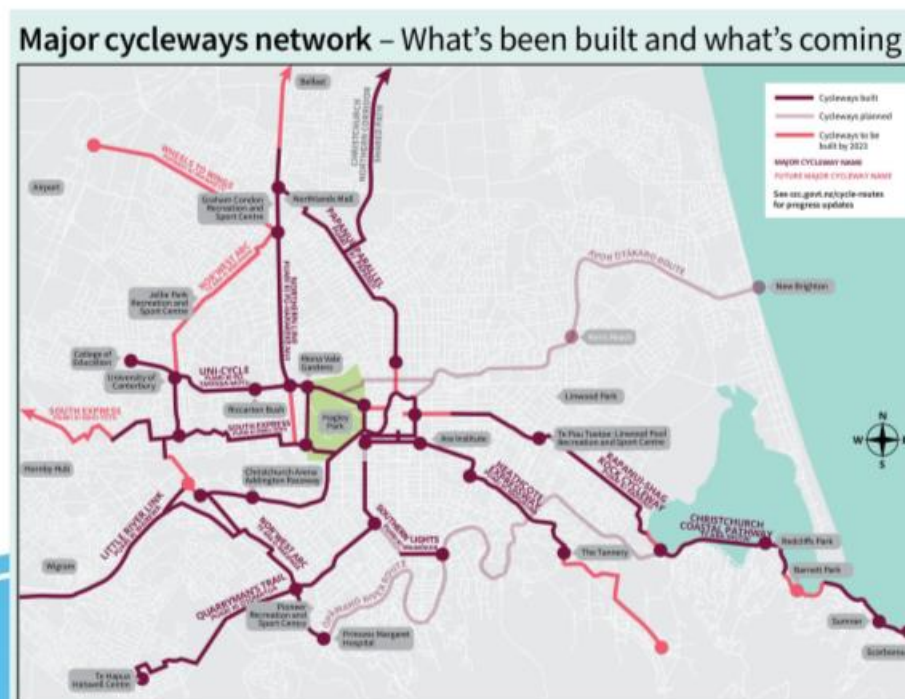
<b>TABLE OF CONTENTS NGĀ IHIRANGI</b>	<b>PAGE</b>
<b>4.1. Public Forum - Thoughts on the Cycle Network, from how the "Wednesday Wheelies" get around the South</b>	
A. Item 4.1 Public Forum - Cycle Network - Stephen Wood .....	3
<b>7. Correspondence</b>	
A. Correspondence - Speeding and anti-social behaviour on Howard Street .....	7
<b>12. Community Parks Urban Forest Planting Plan</b>	
A. Item 12 - Community Parks Urban Forest Planting Plan presentation .....	12
<b>15.1. McCormacks Bay footpath</b>	
A. Photo - McCormacks Bay Road - lamppost in footpath .....	22
<b>15.2. 229 Waimea Terrace footpath</b>	
A. Photo - 229 Waimea Terrace - footpath .....	23

---

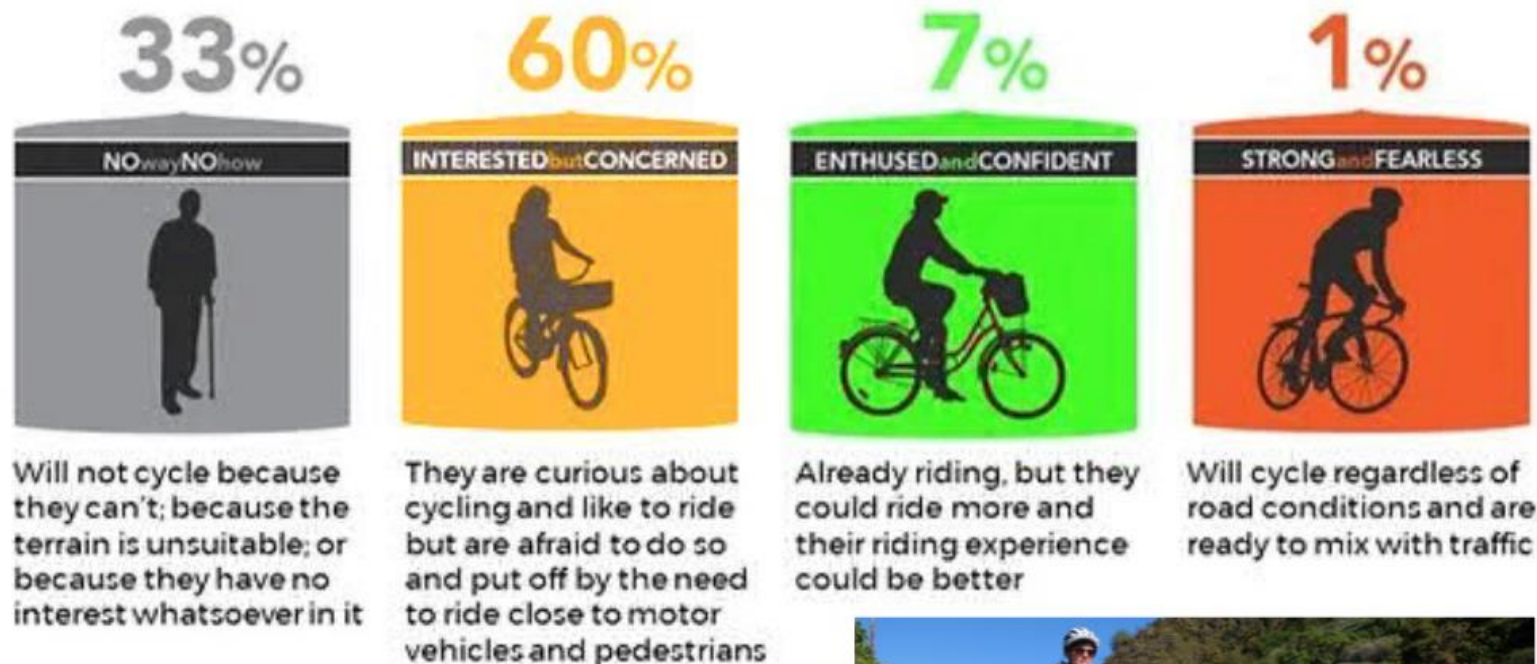


**Presentation to the Waihoru Spreydon-Cashmere-Heathcote Community Board**  
**Stephen Wood, August 2023**

**Ten years on - more done than not done, but there are still big gaps**



# Attitude to cycling (types of cyclists)



These have different approaches to using cycling infrastructure - (& different attitudes to building it!)

NZTA Waka Kotahi, from Geller (2009)



'S&F' vs 'IbC' (photo: Simon Kennett)



# Wednesday Wheelies

- Supported by St Albans Residents Association & Spokes Canterbury
- Has been running for 5½ years, increasingly popular
- Wednesday mornings – demographics, retirees
- Catering to “Interested but Concerned” riders, city discovery
- Typical weekly turnout - 40±10 riders
- Group sizes – safer with 10-12 maximum - need group leaders



1<sup>st</sup> ride November 2017



March 2023



## “WW” routes

- Using MCRs where they’ve been built
- Avoiding many arterials
- Connections, discovery, get out of town
- Using the Ōpāwaho Heathcote corridor.
- Back road routes – zig-zags
- Using some roads that need single file
- A few “tricks” needed in places
- are we connecting to local hubs/places?
- are we typical riders?  
“flatland cross-town tourists”

### Recommendations

- More MCRs? Fill gaps? An orbital?
- Then look at secondary connections, cross-links, links to destinations, hubs, schools, shops, sports facilities, parks, etc
- Is reassigning road space an option?
- “Quick-build” or interim infrastructure?
- Secure bike parking at destinations
- Safer speeds – neighbourhoods, schools
- Caution with using shared infrastructure
- Events to promote cycling: ABC, Biketober



From: rebeccafinch [REDACTED]  
Sent: Monday, August 7, 2023 2:08 PM  
To: Coker, Melanie <Melanie.Coker@ccc.govt.nz>  
Cc: S [REDACTED]  
[REDACTED]

Subject: speeding and anti-social behaviour in Howard st.

Kia ora,

I hope you are well.

I am writing to let you all know I am very concerned about safety on Howard street & I am hoping you can help.

Yesterday, myself and two others, had a meeting at Simeon Park for our Simeon Park Community Group (SPCG) at 3.30pm.

As I was walking down, a driver stopped at the end of Howard St, where it intersects with Simeon St, and did the donut (see picture one above) . The driver created a lot of squealing noise and a big cloud of burnt rubber and then proceeded to speed up Howard St towards Barrington St.

I met Anna at the park some 5 minutes later and we discussed it. She had been at the corner of Diamond Ave and Simeon Street when the driver speed past her in a dangerous way. That corner, on Simeon St, near Diamond Ave reduces visibility and, as I said at the meeting, cars often do speed around it.

After our meeting Keith and I walked back down Howard St to our respective homes. When we got to his house we stopped for a chat. As we chatted the same car came down Howard St again (from Simeon St end) and stopped in the middle of the road and spun the car wheels, right outside Keith's house, as we stood and watched, somewhat dumb-founded. He made another cloud of burnt rubber and then speed away again causing the marks you see in the attached photos (2 & 3).

I have reported all this to police.

What has most frightened me is that a little girl (under 10?) was sitting in the gutter opposite Keith's house when this happened. There was nothing I could do and I was scared the driver would loose control and possibly injure or kill the little girl who sat and watched like we did. Afterwards I suggested to her that she might think about moving if that happened again as a driver can easily loose control. Of course that isn't her responsibility and she was likely scared and stunned, like us.

This has been an issue in Howard st for at least the past ten years, maybe longer. I recall my neighbour at the Barrington St end, bringing speeding around that corner, to councils attention and the small island was installed at the Barrington st end but it is mostly ineffective, at least to the wider problem of speed and donuts in Howard St.

Last year, I think it was, I went to the community board and asked for our street to be tree lined, as a climate adaptation but also to promote care, respect & safety in the area.

A lot of cars speed up and down Howard st, do wheelies at Simeon St intersection and Hiller place intersection. Most often I don't see them as I am inside my house and only hear it, but it is still frightening. This anti-social behaviour is encouraged by the wide st and even wider intersections. As pressures on society grow, pushed by uncertainties associated with climate system breakdown, anti-social behaviour (like speeding and tyre burns) will increase.

I am worried someone is going to get hurt or killed, and that someone is most likely a child.

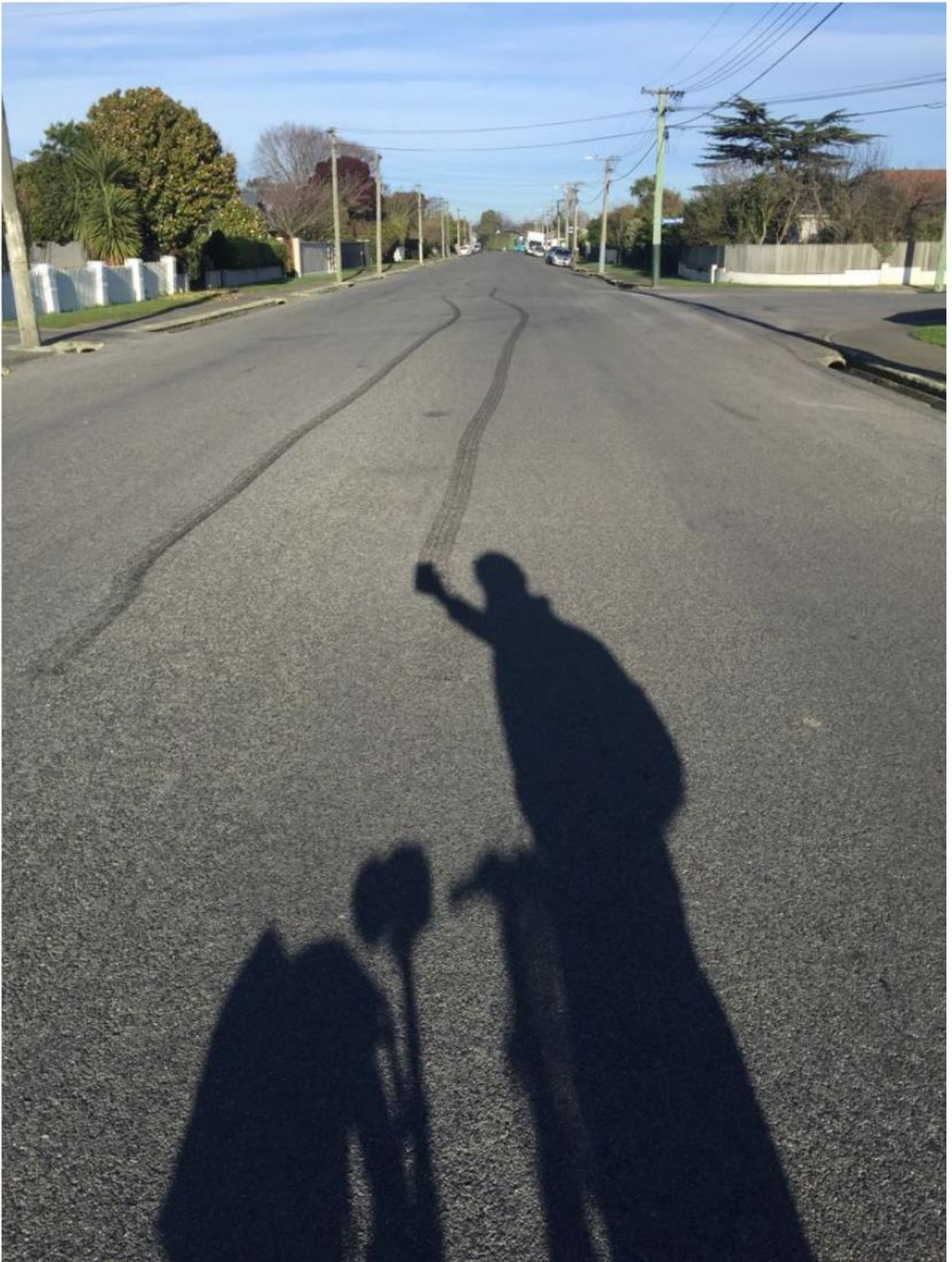
What can we do to get the funding to make the street hard for a driver to speed down, get more trees planted in the whole street (with the associated social benefits) & increase the safety?

This experience show me that the risk of someone being hurt or killed in Howard St from speeding is real and urgent.

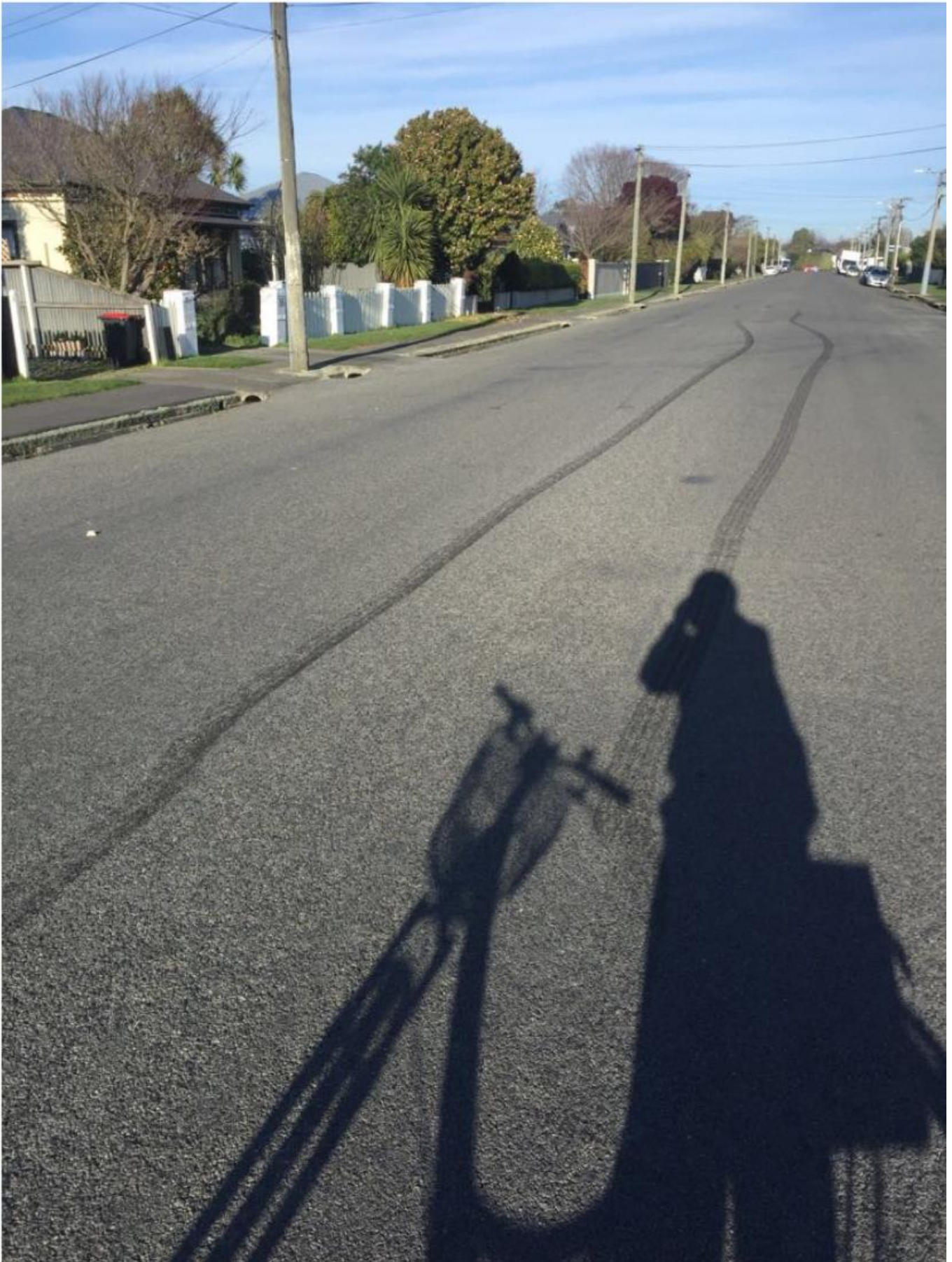
Ngā mihi,  
Kind regards,  
Rebecca.

Sustainable annual GHG footprint: 2 tonnes CO2e per human per year. NZ average: ~**7.5 tonnes**.













# Christchurch City Council Urban Forest Plan Implementation within Parks

Presenter:

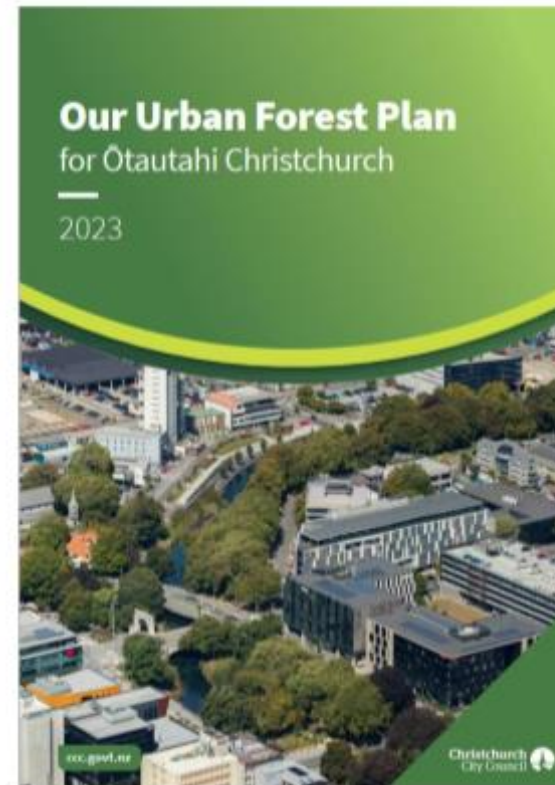
Toby Chapman, City Arborist

Katy McRae, Head of Communications and Engagement



# Agenda

- Planting plans
- Consultation feedback
- Going Forward



## Waihoru Spreydon Cashmere Heathcote

The plans below provide an overview of what is being proposed

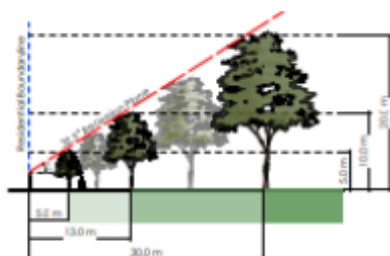
Park Name	Number of new trees	Existing canopy	Projected canopy	Status
West Watson Park	152	20%	57%	Ready for approval
Ferrymead Park	245	10%	42%	Changes required

# Development of Planting Plans

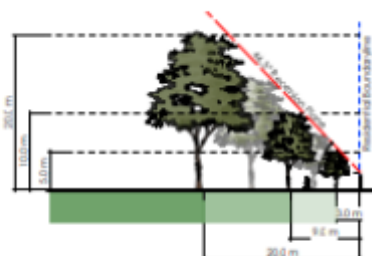


## URBAN FOREST PLAN OBJECTIVES

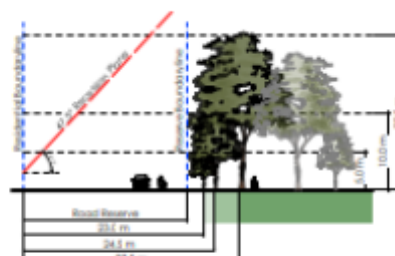
INDICATIVE CROSS SECTION THROUGH THE BOUNDARIES



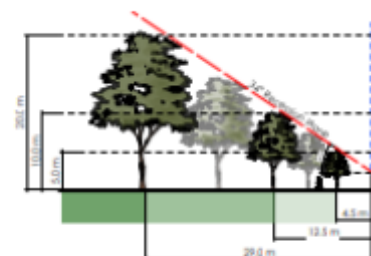
## RECESSION PLANES TO MANAGE SHADING



## SETBACKS TO AVOID ENCROACHMENT



## SPECIES MIX OF NATIVE AND EXOTIC



## Consultation



CONSULTATION OPEN  
30 JUNE – 17 JULY 2023



HAVE YOUR SAY PAGE



PLANS SENT OUT TO  
AFFECTED GROUPS



SIGNAGE OUT AT EACH  
PARK

- 145 submissions - some general and related to all of the plans, while others were specific to a park or parks.
- Of the general submissions (36), a significant proportion were related to species selection, or indicating a preference for a greater representation of native trees.

### Feedback specific to West Watson Park

- Six submissions – one in support and five not in support.
- Concerns raised about shading, particularly of the play equipment during winter, safety, maintenance, preserving space to play.



## Summary of changes

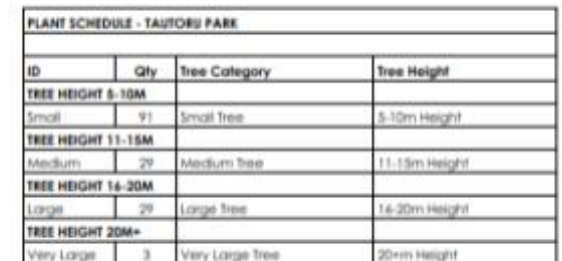


### West Watson Park

**12 proposed trees removed to increase open space around sport fields**

**4 proposed trees removed near playground**

**Tree species will be altered**



REVISION

 Proposed free to be removed

# When will it happen



Planting season runs from April to September



Takes approximately 2 years to grow trees ready to plant



We will plant what we can this planting season



Remaining trees will be planted as the trees become available

## Going forward

We will be looking to develop plans 50+ parks per year



A LIST OF PARKS WILL BE  
SUBMITTED TO COMMUNITY  
BOARDS PRIOR TO PLANS  
BEING DEVELOPED



LOW CANOPY AREAS WILL  
HAVE ADDITIONAL PARKS  
PRIORITISED



COMMUNITY BOARD MEMBERS  
CAN REQUEST CERTAIN PARKS  
BE PRIORITISED



PLANTING PLANS WILL BE  
DEVELOPED AND RELEASED  
FOR FEEDBACK



---

## Questions

---







