

**Waihoru**  
**Spreydon-Cashmere-Heathcote Community Board**  
**MINUTES ATTACHMENTS**

---

**Date:** Thursday 11 May 2023  
**Time:** 4 pm  
**Venue:** Boardroom, Beckenham Service Centre,  
66 Colombo Street, Beckenham

---

<b>TABLE OF CONTENTS</b>	<b>PAGE</b>
<b>4.1. Public Forum - Neighbours Aotearoa</b>	
A. Item 4.1 - Public Forum - Neighbours Aotearoa presentation .....	3
<b>5.1. Deputations by Appointment - Sumner Tennis and Squash Club Application to lease 8-14 Heberden Avenue and 140 Nayland Street</b>	
A. Item 5.1 - Deputation - Sumner Tennis Squash Club Land Proposal presentation .....	9
<b>5.2. Deputations by Appointment - Stourbridge Street and Clarence Street South Proposed No Stopping Restrictions</b>	
A. Item 5.2 - Deputation - Stourbridge Street Proposed No Stopping Restrictions - photos exiting Oderings Garden Centre onto Stourbridge Street .....	27
B. Item 5.2 - Deputation - Stourbridge Street Proposed No Stopping Restrictions - Notes .....	28

---



# Let's Share



Take part in Neighbours Aotearoa by sharing  
with your neighbours.

Neighbours Aotearoa 1–31 March 2023

Here are some ways you can take part



share a cuppa



share tools



share fun  
times—potluck,  
garage sale, bbq



share  
fresh crops



share kai

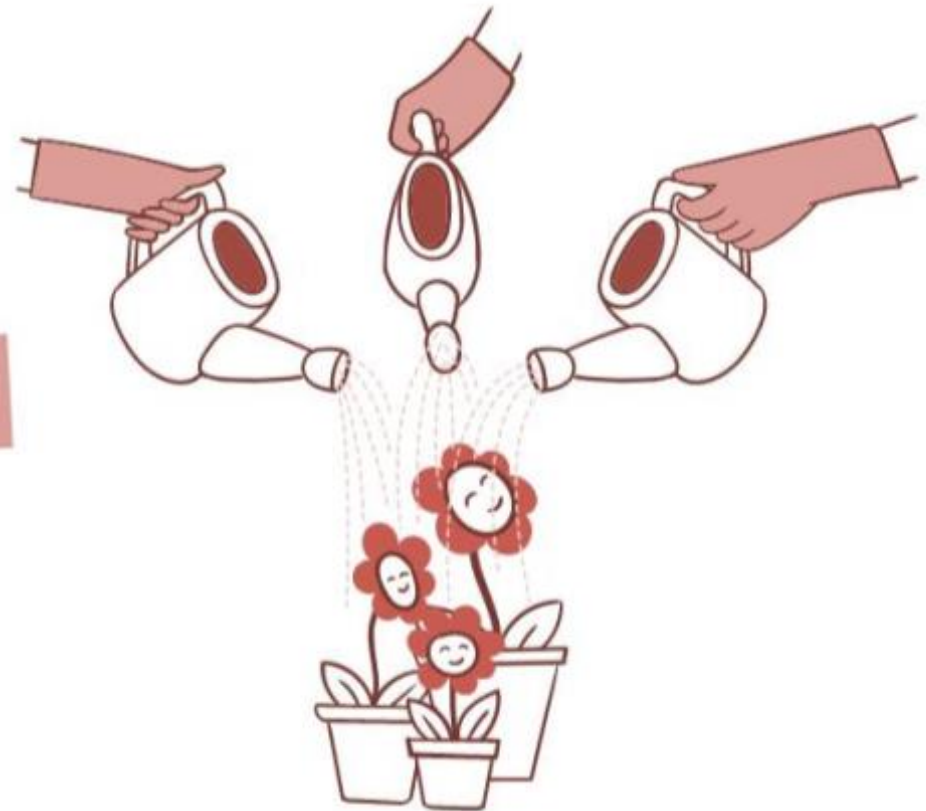


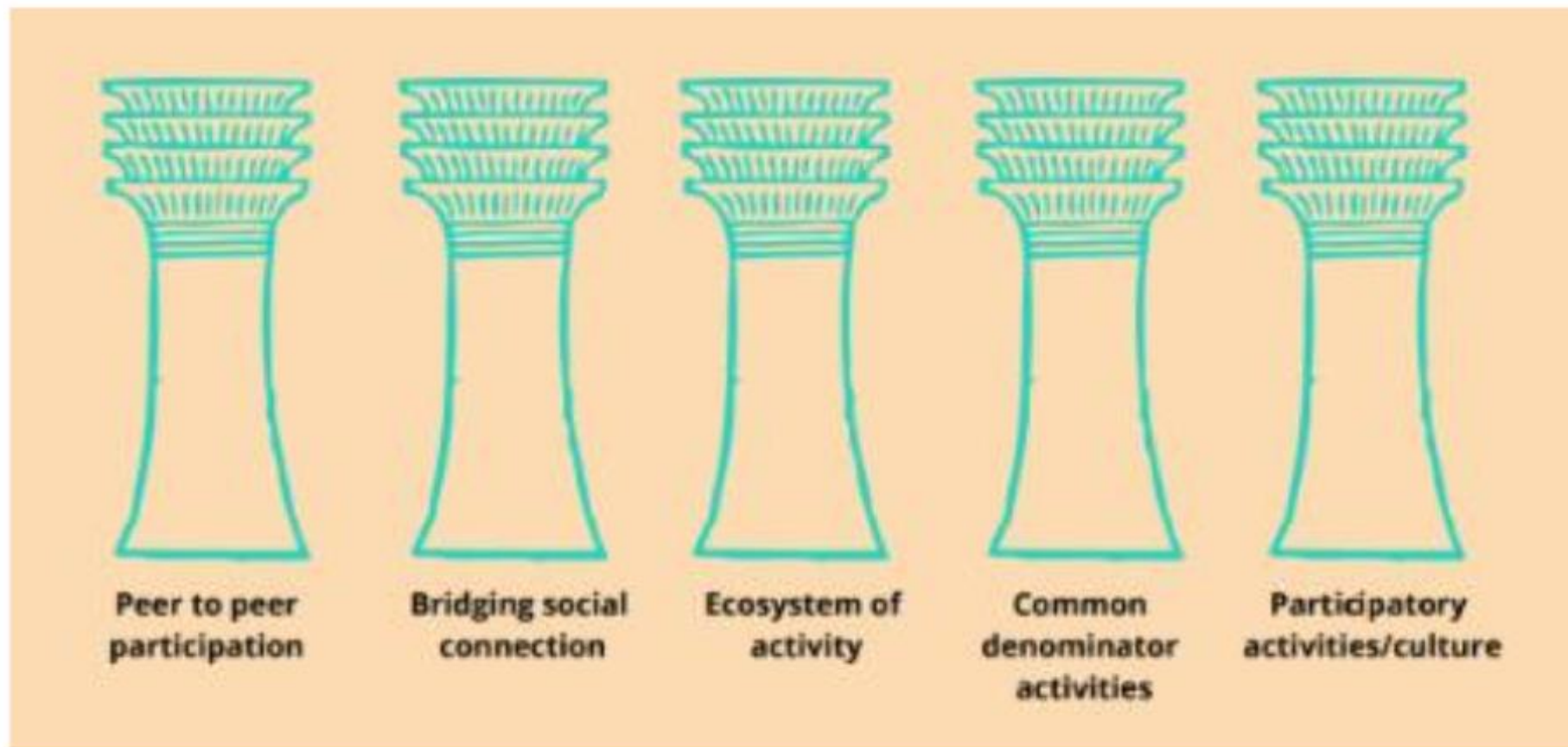
share kōrero

Grow a resilient and  
supportive  
community together  
with your neighbours.

Since 2019, **2568** people have organised an  
activity for Neighbours Aotearoa

About Neighbours Aotearoa





















# Sumner Tennis & Squash Club Land Proposal

Public Private Partnership in STSC Expansion & Red Zoned Land Development

## About Sumner Tennis & Squash Club

- Voted best club by Canterbury Tennis Association for 2021
- More adult members per court than any club in NZ
- 360 Adult members capped with 40 on waitlist





## About Sumner Tennis & Squash Club

- Multisport club offering tennis, squash, table tennis, darts and basketball
- One of the lowest fee structures of any tennis and squash club in the country



## One of the most affordable clubs in New Zealand

FAMILY	
Mount Pleasant	\$405
St Albans	\$470
<b>SUMNER TENNIS AND SQUASH</b>	<b>\$450</b>
Shirley	\$456
	\$480
Hallswell	\$550
Redwood	\$670
Burnside	\$630
Burwood	\$650
South New Brighton	\$650
Bishopdale	\$720
Opawa	\$770
Waimairi	\$780
Elmwood	\$825
Cashmere (includes hotshots)	\$1,402
<b>Average</b>	<b>\$659</b>

OTHER TENNIS & SQUASH CLUBS	ADULT	COUPLE / FAMILY
Warkworth	\$242	\$460
<b>SUMNER TENNIS AND SQUASH</b>	<b>\$270</b>	<b>\$500</b>
Howick	\$329	\$658
Cambridge	\$350	\$700
Thorndon	\$360	\$720
Belmont	\$390	\$780
Khandallah	\$410	\$740
Hamilton	\$435	\$720
Browns Bay	\$440	\$779
Papakura	\$450	\$745
Henderson	\$499	\$998
Titirangi	\$504	\$1,008
Royal Oak	\$639	\$1,066
Eden Epsom	\$677	\$1,354
Remuera	\$840	\$1,320
<b>AVERAGE</b>	<b>\$454</b>	<b>\$833</b>





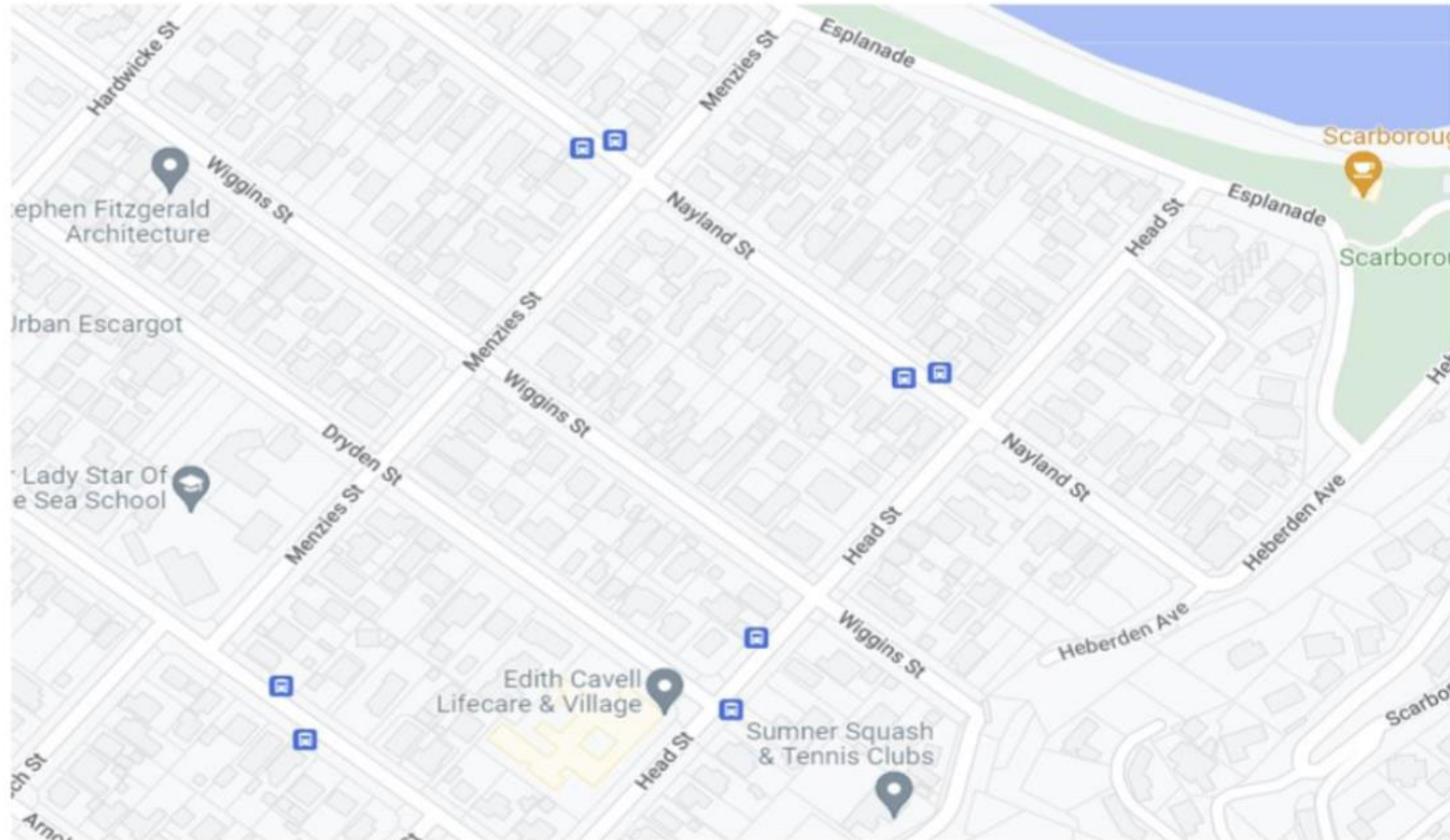
## Sumner Tennis Court Usage Per Court Per Day

Month	Bookings	Average duration	Total time	Time Per Court Per Day
May	321	80 minutes	426 hours	3.4 hours
June	268	80 minutes	357 hours	3.0 hours
July	236	80 minutes	315 hours	2.5 hours
August	159	80 minutes	212 hours	1.7 hours
September	476	80 minutes	635 hours	5.3 hours
October	443	80 minutes	590 hours	4.8 hours
November	457	80 minutes	609 hours	5.1 hours
December	319	80 minutes	425 hours	3.4 hours
January	277	80 minutes	369 hours	3.1 hours
February	478	80 minutes	637 hours	5.7 hours
March	529	80 Minutes	705 hours	5.9 hours
April	344	80 Minutes	459 hours	3.8 hours









## Sumner Tennis & Squash Club Proposal

- Develop the red zoned land opposite STSC into a public/private sport facility and park.
- STSC would cover the cost of installing two tennis courts that the public would be free to book and use.
- This would enable us to clear our waitlist, grow the club and promote tennis to the wider Christchurch community.

## Sumner Tennis & Squash Club Proposal

- Provide basketball and pickle ball courts for public use just off Scarborough Park.
- Provide a cycle / walkway linking Nayland St to Heberden Ave
- Provide sufficient setbacks from the neighbors and cliffs to mitigate safety and noise concerns.
- Create easy access for Council vehicles to access the pump station off Nayland St



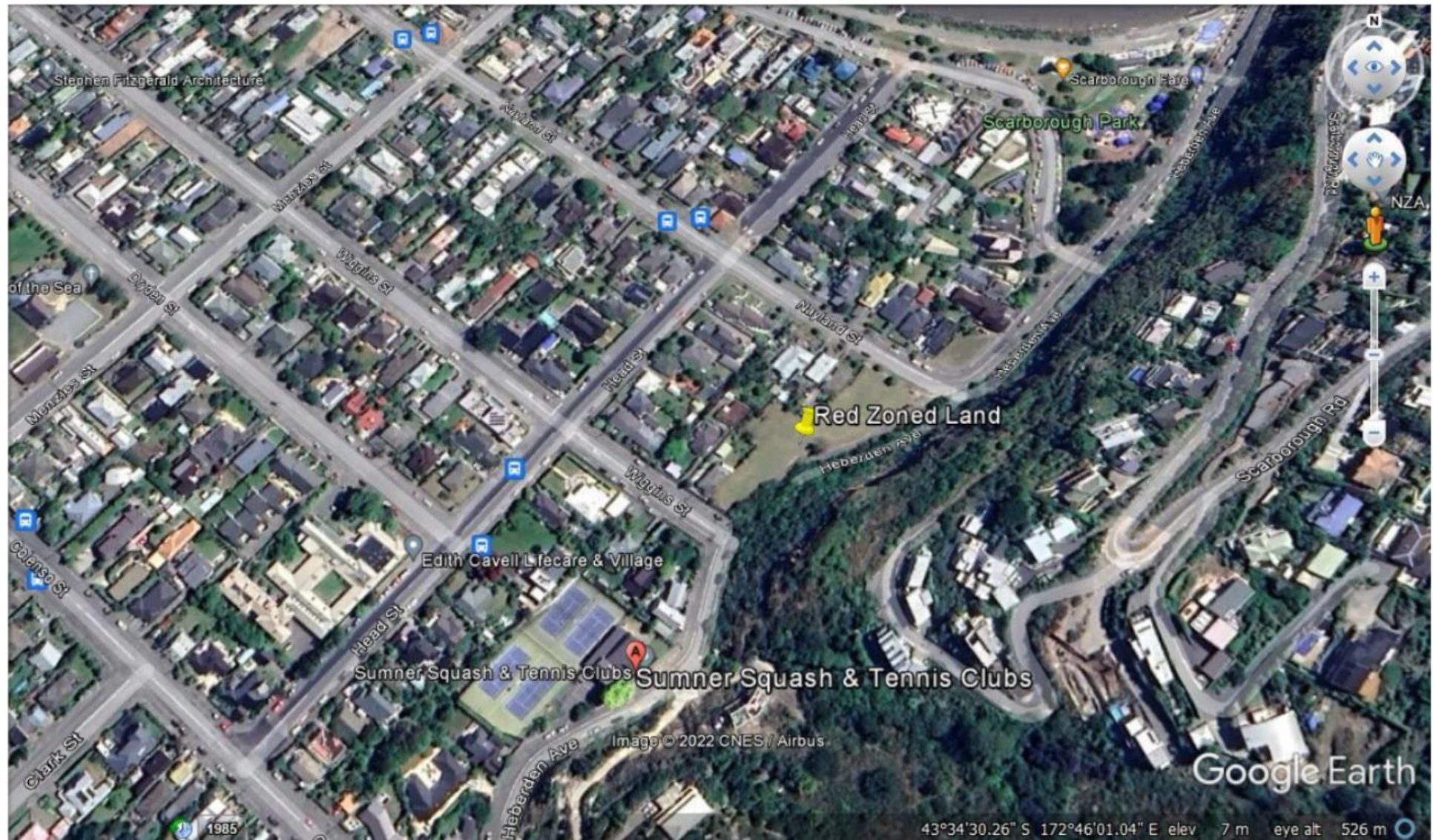
## Pickleball Court for Public Use



## Basketball Court for Public Use











## Satellite Overlay



## Advantages of developing the Red Zoned Land in Conjunction with STSC

### Advantages to Chch Public and CCC

- Public Tennis facility just off Scarborough park with room for expansion into pickleball or basketball.
- STSC would pay for the two tennis courts and fundraise for the development as a whole, mitigating cost to the ratepayers of Christchurch.

### Advantages to (STSC)

- Once in a lifetime opportunity to expand our club and meet the growing demand from our community.
- The ability to promote tennis to wider Christchurch and provide a facility many people can enjoy.







11/5/23

Thank you for the opportunity to speak to my submission.

My name is Julian Odering.

I am a director, also health and safety officer of Oderings Nurseries. I work mostly at the Barrington St branch, the property to which this submission relates.

Over the years we have had many complaints from our customers, commenting on near misses they have experienced with oncoming traffic exiting the driveway at 58 Stourbridge St.

Stourbridge St is an extremely busy road, because of Barrington Mall and service station to the east, and West Spreydon school down the road in Lyttleton St, that many children ride past on bikes to get to.

Now days many battery powered scooters that people ride to work on travel at very high speed with no protection in the case of a side on collision with a car. Many don't even wear a helmet and are exceptionally hard to see with vehicles parked at the side of the street, blocking the view for cars wanting to exit the nursery both ways, especially right turning traffic.

During spring months, traffic flows are very high, especially on weekend days from this exit. Many of the cars driving out sit low to the road making visibility very limited. [see the picture on the screen ] That was taken at an average car drivers side windscreen height of 1 metre from the road.

It is a miracle no serious accident has occurred yet, but its only a matter of time before it does.

Therefore, I respectfully request yellow lines outside 58 Stourbridge St to the East are painted for a length of at least 8 metres on the road.

Thank you again for hearing my submission.

Julian Odering

**HEAD OFFICE** 92 Stourbridge Street, PO Box 33-125, Barrington, Christchurch 8244  
**Phone:** 03 332 9099, **Fax:** 03 332 1585, **Email:** info@oderings.co.nz, **www.oderings.co.nz**

Christchurch | Palmerston North | Havelock North | Napier