



---

## Waipapa Papanui-Innes-Central Community Board AGENDA

---

### Notice of Meeting Te Pānui o te Hui:

An ordinary meeting of the Waipapa Papanui-Innes-Central Community Board will be held on:

**Date:** Thursday 10 July 2025  
**Time:** 4 pm  
**Venue:** Board Room, Papanui Service Centre,  
Corner Langdons Road and Restell Street, Papanui

---

### Membership Ngā Mema

Chairperson	Emma Norrish
Deputy Chairperson	Simon Britten
Members	Pauline Cotter
	Sunita Gautam
	Victoria Henstock
	Ali Jones
	Jake McLellan
	John Miller
	Emma Twaddell

---

4 July 2025

### Principal Advisor

Emma Pavey  
Manager Community Governance  
Tel: 941 5107  
[emma.pavey@ccc.govt.nz](mailto:emma.pavey@ccc.govt.nz)

### Meeting Advisor

Mark Saunders  
Community Board Advisor  
Tel: 941 6436  
[mark.saunders@ccc.govt.nz](mailto:mark.saunders@ccc.govt.nz)  
**Website:** [www.ccc.govt.nz](http://www.ccc.govt.nz)

**Note:** The reports contained within this agenda are for consideration and should not be construed as Council policy unless and until adopted. If you require further information relating to any reports, please contact the person named on the report.

**To watch the meeting live, or a recording after the meeting date, go to:**

<https://www.youtube.com/@waipapapapanui-innes-centr7673/streams>

**To view copies of Agendas and Minutes, go to:**

<https://www.ccc.govt.nz/the-council/meetings-agendas-and-minutes/>



# What is important to us?

Our Strategic Framework is a big picture view of what the Council is aiming to achieve for our community

## Our focus this Council term 2022–2025

### Strategic Priorities



Be an inclusive and equitable city which puts people at the centre of developing our city and district, prioritising wellbeing, accessibility and connection.



Champion Ōtautahi-Christchurch and collaborate to build our role as a leading New Zealand city.



Build trust and confidence in the Council through meaningful partnerships and communication, listening to and working with residents.

Adopted by the Council on 5 April 2023



Reduce emissions as a Council and as a city, and invest in adaptation and resilience, leading a city-wide response to climate change while protecting our indigenous biodiversity, water bodies and tree canopy.



Manage ratepayers' money wisely, delivering quality core services to the whole community and addressing the issues that are important to our residents.



Actively balance the needs of today's residents with the needs of future generations, with the aim of leaving no one behind.

## Our goals for this Long Term Plan 2024–2034

### Draft Community Outcomes



Collaborative and confident

Our residents have the opportunity to actively participate in community and city life, have a strong sense of belonging and identity, and feel safe.



Green and liveable

Our neighbourhoods and communities are accessible and well connected, supporting our goals to reduce emissions, build climate resilience and protect and regenerate the environment, especially our biodiversity, water bodies and tree canopy.

To be adopted by the Council as part of the Long Term Plan 2024–2034



A cultural powerhouse

Our diverse communities are supported to understand and protect their heritage, pursue their arts, cultural and sporting interests, and contribute to making our city a creative, cultural and events 'powerhouse'.



Thriving and prosperous

Our city is a great place for people, business and investment where we can all grow our potential, where enterprises are innovative and smart, and where together we raise productivity and reduce emissions.

## Our intergenerational vision

A place of opportunity for all.

Open to new ideas, new people, new investment and new ways of doing things – a place where anything is possible.



Ngāi Tahu has rangatiratanga over its takiwā – the Council is committed to partnering with Ngāi Tahu to achieve meaningful outcomes that benefit the whole community

Part A	Matters Requiring a Council Decision
Part B	Reports for Information
Part C	Decisions Under Delegation

## TABLE OF CONTENTS NGĀ IHIRANGI

Karakia Tīmatanga .....	4
C 1. Apologies Ngā Whakapāha .....	4
B 2. Declarations of Interest Ngā Whakapuaki Aronga .....	4
C 3. Confirmation of Previous Minutes Te Whakaāe o te hui o mua .....	4
B 4. Public Forum Te Huinga Whānui .....	4
B 5. Deputations by Appointment Ngā Huinga Whakaritenga.....	4
B 6. Presentation of Petitions Ngā Pākikitanga .....	4

### STAFF REPORTS

C 7. Richmond CRAF Neighbourhood Greenway Cycleway - Change of design outside 45 Averill Street.....	13
C 8. 159 Cranford Street - P5 Parking Restrictions .....	25
C 9. Wairakei Road - Proposed P3 Parking Restriction .....	33
C 10. Caledonian Road - Proposed P5 Loading Zone .....	41
C 11. Waipapa Papanui-Innes-Central Community Board Area Report - July 2025 ....	47
B 12. Elected Members' Information Exchange Te Whakawhiti Whakaaro o Te Kāhui Amorangi.....	68

### Karakia Whakamutunga

### Actions Register Ngā Mahinga Tuwhera

## Karakia Tīmatanga

Whakataka te hau ki te uru Whakataka te hau ki te tonga Kia mākinakina ki uta Kia mātaratara ki tai E hī ake ana te atakura He tio, he huka, he hauhūnga Tihei Mauri Ora	Cease the winds from the west Cease the winds from the south Let the breeze blow over the land Let the breeze blow over the ocean Let the red-tipped dawn come with a sharpened air. A touch of frost, a promise of a glorious day.
--	--

### 1. Apologies Ngā Whakapāha

Apologies will be recorded at the meeting.

### 2. Declarations of Interest Ngā Whakapuaki Aronga

Members are reminded of the need to be vigilant and to stand aside from decision-making when a conflict arises between their role as an elected representative and any private or other external interest they might have.

### 3. Confirmation of Previous Minutes Te Whakaāe o te hui o mua

That the minutes of the Waipapa Papanui-Innes-Central Community Board meeting held on [Thursday, 12 June 2025](#) be confirmed (refer page 5).

### 4. Public Forum Te Huinga Whānui

A period of up to 30 minutes will be available for people to speak for up to five minutes on any issue that is not the subject of a separate hearings process.

#### 4.1 Lauren Dyet

Lauren Dyet will report back on travelling with the Mixx U19 Korfball Team to the National Championships in Taiwan, which the Board supported through its Youth Development Fund.

#### 4.2 Jean Taylor

Jean Taylor will report back on representing Canterbury at the U18 Netball Tournament in Wellington, which the Board supported through its Youth Development Fund.

### 5. Deputations by Appointment Ngā Huinga Whakaritenga

Deputations may be heard on a matter or matters covered by a report on this agenda and approved by the Chairperson.

Deputations will be recorded in the meeting minutes.

### 6. Presentation of Petitions Ngā Pākikitanga

There were no petitions received at the time the agenda was prepared.

To present to the Community Board, refer to the [Participating in decision-making](#) webpage or contact the meeting advisor listed on the front of this agenda.





Waipapa  
Papanui-Innes-Central Community Board  
OPEN MINUTES

**Date:** Thursday 12 June 2025  
**Time:** 4 pm  
**Venue:** Board Room, Papanui Service Centre,  
Corner Langdons Road and Restell Street, Papanui

**Present**

Chairperson	Emma Norrish
Deputy Chairperson	Simon Britten
Members	Pauline Cotter
	Sunita Gautam
	Victoria Henstock
	Ali Jones
	Jake McLellan
	John Miller (via audio/visual link)
	Emma Twaddell

**Principal Advisor**

Emma Pavey  
Manager Community Governance  
Tel: 941 5107  
[emma.pavey@ccc.govt.nz](mailto:emma.pavey@ccc.govt.nz)

**Meeting Advisor**

Mark Saunders  
Community Board Advisor  
Tel: 941 6436  
[mark.saunders@ccc.govt.nz](mailto:mark.saunders@ccc.govt.nz)

**Website:** [www.ccc.govt.nz](http://www.ccc.govt.nz)

To watch meetings, live, or previous recordings, go to:

<https://www.youtube.com/@waipapapapanui-innes-centr7673/streams>

To view copies of Agendas and Minutes, go to:

<https://www.ccc.govt.nz/the-council/meetings-agendas-and-minutes/>



- Part A**      **Matters Requiring a Council Decision**  
**Part B**      **Reports for Information**  
**Part C**      **Decisions Under Delegation**
- 

## Karakia Tīmatanga

The agenda was dealt with in the following order.

### 1. Apologies Ngā Whakapāha

**Part C**

**Community Board Resolved PCBCC/2025/00030**

That the apology from Pauline Cotter for lateness be accepted.

Victoria Henstock/Sunita Gautam

Carried

### 2. Declarations of Interest Ngā Whakapuaki Aronga

**Part B**

There were no declarations of interest recorded.

### 3. Confirmation of Previous Minutes Te Whakaāe o te hui o mua

**Part C**

**Community Board Resolved PCBCC/2025/00031**

That the minutes of the Waipapa Papanui-Innes-Central Community Board meeting held on Thursday, 15 May 2025 be confirmed.

Ali Jones/Emma Twaddell

Carried

### 4. Public Forum Te Huinga Whānui

**Part B**

**4.2 Justin Fields**

Justin Fields, Principal of Christchurch North College, spoke to introduce the work of the College to the Board.

Pauline Cotter joined the meeting at 4.13 pm during consideration of Item 4.1.

**4.1 Rhys Lewis**

Rhys Lewis reported back on competing at The World VEX Robotics Championships in Dallas, USA, which the Board supported through its Youth Development Fund.

**4.3 David Laird Chairbler**

Woodworker, David Laird, addressed the Board regarding urban timber recovery.

**4.4 Predator Free St Albans**

Nigel Larsen spoke on behalf of Predator Free St Albans regarding their activities, with reference to the attached trap distribution map.

**Attachments**

A Predator Free St Albans - Trap Distribution Map

**5. Deputations by Appointment Ngā Huinga Whakaritenga**

**Part B**

**5.1 Sutton Heritage House and Garden Trust**

Ian Lochhead spoke on behalf of Sutton Heritage House and Garden Trust regarding Item 8, Sutton House – Lease to Sutton Heritage House and Garden Trust.

**5.2 We Are Richmond**

Hayley Guglietta spoke on behalf of We Are Richmond regarding Item 9, Tree Planting Plan for Petrie Park, with reference to the attached concept plan for the park.

**Attachments**

A We Are Richmond - Petrie Park Concept Plan

**5.3 Kris Mackie**

Local resident, Kris Mackie, spoke regarding Item 9, Tree Planting Plan for Petrie Park.

**6. Presentation of Petitions Ngā Pākikitanga**

**Part B**

There was no presentation of petitions.

**9. Tree Planting Plan for Petrie Park**

**Board Consideration**

The Council's Urban Forest Manager joined the meeting via an audiovisual link to address the Board's questions.

The Board considered the submissions and deputations (Items 5.2 and 5.3) before reaching a decision. It accepted the Officer Recommendations with an added request that staff work with We Are Richmond and the resident on the southern boundary on a species mix for the tree planting in the park, acknowledging the shading concerns raised in the last deputation.

**Officer Recommendations Ngā Tūtohu**

That the Waipapa Papanui-Innes-Central Community Board:

1. Receives the information in the Tree Planting Plan for Petrie Park Report.
2. Notes that the decision in this report is assessed as low significance based on the Christchurch City Council's Significance and Engagement Policy.
3. Approves the planting of trees within Petrie Park in alignment with Agenda Report Attachment A.
4. Approves the concept plan provided by We Are Richmond (Agenda Report Attachment B) subject to funding being acquired and all consenting requirements being met.

**Community Board Resolved PCBCC/2025/00032**

**Part C**

That the Waipapa Papanui-Innes-Central Community Board:

1. Receives the information in the Tree Planting Plan for Petrie Park Report.
2. Notes that the decision in this report is assessed as low significance based on the Christchurch City Council's Significance and Engagement Policy.
3. Approves the planting of trees within Petrie Park in alignment with Agenda Report Attachment A.
4. Approves the concept plan provided by We Are Richmond (Agenda Report Attachment B) subject to funding being acquired and all consenting requirements being met.
5. Requests staff work with We Are Richmond and the resident on the southern boundary on a species mix for Petrie Park.

Pauline Cotter/Sunita Gautam

**Carried**

**7. Notice of Motion - Courtenay Street**

**Board Consideration**

The mover, with the agreement of the other members present, added further clarification to the last part of her motion that the investigation should include the other end of Courtenay Street intersecting Westminster Street and Roosevelt Avenue.

**Notice of Motion – moved by Pauline Cotter**

That the Waipapa Papanui-Innes-Central Community Board:

1. Notes that Courtenay Street traffic volumes have increased more than 30% since the opening of the Christchurch Northern Corridor (CNC).
2. Notes that an increase of more than 30% triggers an investigation under the Downstream Effects Management Plan (DEMP), which is a Board Plan priority project. Consequently, this makes investigation of the issues along Courtenay Street a Board priority.
3. Requests advice on options to bring forward the renewal of Courtenay Street.
4. Requests urgent advice on safety improvements, including removing the deep dish channels, and investigating the intersection of Courtenay Street, Trafalgar Street, and St Albans Street since the removal of the roundabout.

**Community Board Resolved PCBCC/2025/00033**

**Part C**

That the Waipapa Papanui-Innes-Central Community Board:

1. Notes that Courtenay Street traffic volumes have increased more than 30% since the opening of the Christchurch Northern Corridor (CNC).
2. Notes that an increase of more than 30% triggers an investigation under the Downstream Effects Management Plan (DEMP), which is a Board Plan priority project. Consequently, this makes investigation of the issues along Courtenay Street a Board priority.
3. Requests advice on options to bring forward the renewal of Courtenay Street.
4. Requests urgent advice on safety improvements, including removing the deep dish channels, and investigating the intersection of Courtenay Street, Trafalgar Street, and St Albans Street since the removal of the roundabout, and including Roosevelt Avenue, Westminster Street and Courtenay Street.

Pauline Cotter/Sunita Gautam

**Carried**

**8. Sutton House - Lease to The Sutton Heritage House and Garden Charitable Trust**

**Community Board Resolved PCBCC/2025/00034 Officer recommendations accepted without change**

**Part C**

That the Waipapa Papanui-Innes-Central Community Board:

1. Receives the information in the Sutton House - Lease to The Sutton Heritage House and Garden Charitable Trust Report.
2. Notes that the decision in this report is assessed as low significance based on the Christchurch City Council's Significance and Engagement Policy.
3. Approves the granting of a lease to The Sutton Heritage House and Garden Charitable Trust for a period of 20 years including renewals for a nominal annual rental of \$1 for the land and buildings located at 20 Templar Street, Richmond.
4. Delegates authority to the Manager Property Consultancy to do all things necessary and make any decisions at his sole discretion that are consistent with the intent of this report to implement the resolutions above including but not limited to conclude and administer the lease.

Sunita Gautam/Ali Jones

**Carried**



## 10. Cross Reserve - play space renewal concept plan

**Community Board Resolved PCBCC/2025/00035 Officer recommendations accepted without change**

### Part C

That the Waipapa Papanui-Innes-Central Community Board:

1. Receives the information in the Cross Reserve - play space renewal concept plan Report.
2. Notes that the decision in this report is assessed as low significance based on the Christchurch City Council's Significance and Engagement Policy.
3. Approves the concept design for the play space renewal at Cross Reserve as set out in Attachment A to this report.
4. Requests staff to proceed with the development of the detailed design and construction phase.

Emma Norrish/Victoria Henstock

Carried

## 11. Waipapa Papanui-Innes-Central Community Board 2024-25 Discretionary Response Fund Application - Mairehau Library Incorporated

**Community Board Resolved PCBCC/2025/00036 Officer recommendations accepted without change**

### Part C

That the Waipapa Papanui-Innes-Central Community Board:

1. Receives the information in the Waipapa Papanui-Innes-Central Community Board 2024-25 Discretionary Response Fund Application - Mairehau Library Incorporated Report.
2. Notes that the decisions in this report are assessed as low significance based on the Christchurch City Council's Significance and Engagement Policy.
3. Approves a grant of \$1,200 from its 2024-25 Discretionary Response Fund to Mairehau Library Incorporated towards Security for Library Volunteers and Members by means of a camera.

John Miller/Ali Jones

Carried

## 12. Standing Orders Amendment - Notices of Motion

**Community Board Resolved PCBCC/2025/00037 Officer recommendations accepted without change**

### Part C

That the Waipapa Papanui-Innes-Central Community Board:

1. Receives the information in the Standing Orders Amendment - Notices of Motion Report.

2. Notes that the decision in this report is assessed as low significance based on the Christchurch City Council's Significance and Engagement Policy.
3. Revokes Standing Order 22.1 and 19.3, and replaces it with the following wording, in order to amend the timeframe for a notice of motion to be delivered to the Chief Executive:
  - a. 22.1 Notice of intended motion to be in writing  
Notice of intended motions must be in writing signed by the mover, stating the meeting at which it is proposed that the intended motion be considered, and must be delivered to the Chief Executive at least **10** clear working days before such meeting, **or a shorter time at the discretion of the Chief Executive**. [Notice of an intended motion can be sent via email and include the scanned electronic signature of the mover.]  
  
Once the motion is received and accepted by the Chief Executive, he or she must give members notice in writing of the intended notice of motion at least 2 clear working days before the date of the meeting at which it will be considered.
  - b. 19.3 Requirement to give notice  
A member must give notice to the Chief Executive at least **10** clear working days before the meeting, **or a shorter time at the discretion of the Chief Executive**, at which it is proposed to consider the motion. The notice is to be signed by not less than one third of the members including vacancies. Notice can be sent via email and include the scanned electronic signatures of members. If the notice of motion is lost, no similar notice of motion which is substantially the same in purpose and effect may be accepted within the next six months.

Emma Norrish/Simon Britten

**Carried Unanimously**

### 13. Waipapa Papanui-Innes-Central Community Board Area Report - June 2025

**Community Board Resolved PCBCC/2025/00038 Officer recommendations accepted without change**

#### **Part B**

That the Waipapa Papanui-Innes-Central Community Board:

1. Receives the information in the Waipapa Papanui-Innes-Central Community Board Area Report - June 2025.

Ali Jones/Pauline Cotter

**Carried**

### 14. Elected Members' Information Exchange Te Whakawhiti Whakaaro o Te Kāhui Amorangi

#### **Part B**

Board members updated each other on recent events, and issues of relevance to the Board arising at Council, including in relation to:

- Dover Street Meeting

- Wairakei Road / Aorangi Road works
- St James Park bark renewal
- Upcoming Papanui Bush Planting Day
- Council Information Session on Surface Flooding Reduction Programme, including reference to sites in the Board area.

## **Karakia Whakamutunga**

**Meeting concluded at 6.04 pm.**

**CONFIRMED THIS 10<sup>th</sup> DAY OF JULY 2025**

**EMMA NORRISH**  
**CHAIRPERSON**

## 7. Richmond CRAF Neighbourhood Greenway Cycleway - Change of design outside 45 Averill Street

Reference Te Tohutoro: 25/1122747

Responsible Officer(s) Te Lisa-Maria Biggar, Junior Project Manager

Pou Matua: Tom Williams, Senior Traffic Engineer

Accountable ELT

Member Pouwhakarae: Brent Smith, General Manager City Infrastructure

### 1. Purpose and Origin of the Report Te Pūtake Pūrongo

- 1.1 The purpose of this report is to seek approval from the Waipapa Papanui-Innes-Central Community Board regarding a proposed change to one of the Neighbourhood Greenway Cycleway speed humps on Averill Street.
- 1.2 This report has been prepared in response to building and resource consents being approved for new residential buildings at 45 Averil Street that has resulted in the proposed vehicle crossing conflicting with the recently constructed speed hump (constructed as part of the Neighbourhood Greenway Cycleway project – shown in **Attachment A**).
- 1.3 This report outlines the background, implications, and options for resolving the issue.

### 2. Officer Recommendations Ngā Tūtohu

That the Waipapa Papanui-Innes-Central Community Board:

1. Receives the information in the Richmond CRAF Neighbourhood Greenway Cycleway - Change of design outside 45 Averill Street Report.
2. Notes that the decision in this report is assessed as medium significance based on the Christchurch City Council's Significance and Engagement Policy.
3. Notes that the changes listed below are necessary to enable the proposed relocation of the vehicle crossing at 45 Averil Street. These recommendations enable this vehicle crossing relocation to proceed whilst maintaining the original intent of the Neighbourhood Greenway Cycleway as previously approved.
4. Revokes all previous resolutions pertaining to traffic controls or stopping / parking restrictions made pursuant to any bylaw to the extent that they conflict with parking or stopping restrictions described in resolutions 5 - 6 below.
5. Relying on its powers under the Christchurch City Council Traffic and Parking Bylaw 2017 and Part 21 of the Local Government Act 1974, approve the road layout, including all kerb build outs, road surface treatments, traffic calming features and road markings as detailed on plan TG1390S10, dated 17.06.2025, and attached to this report as **Attachment B**.
6. Approves pursuant to Clause 7 of the Christchurch City Council Traffic and Parking Bylaw 2017, that the stopping of vehicles be prohibited at all times:
  - a. Along the north side of Averill Street commencing at its intersection with Chrystal Street and extending in an easterly direction for a distance of 40 metres
  - b. Along the south side of Averill Street commencing at its intersection with Chrystal Street and extending in an easterly direction for a distance of 43 metres.

7. Approves that these resolutions take effect when parking signage and/or road markings that evidence the restrictions described in 4-6 are in place (or removed in the case of revocations).
8. It is noted that:
  - a. The design and physical works associated with the recommended option will be progressed as a priority to minimise further delays; and
  - b. Co-ordination with the developer at 45 Averill Street will be maintained to ensure alignment with the proposed new vehicle crossing.

### 3. Executive Summary Te Whakarāpopoto Matua

- 3.1 On 29 May 2025, it was brought to the attention of the Neighbourhood Greenway Cycleway project team that a building and resource consent had been approved for 45 Averill Street, which would result in the proposed vehicle crossing being in conflict with the recently constructed speed hump (constructed as part of the Neighbourhood Greenway Cycleway project).
- 3.2 In response, the project team convened to discuss the implications of this situation and to identify a practical solution that addresses the conflict between the newly installed speed hump and the proposed vehicle crossing.
- 3.3 The recommended solution is to relocate the speed hump and buildouts to accommodate the proposed vehicle crossing at 45 Averill Street while maintaining the integrity and safety objectives of the Neighbourhood Greenway Cycleway. This option ensures continued traffic calming effectiveness, supports pedestrian and cyclist safety, and avoids the need for additional consultation.
- 3.4 In response to the proposed vehicle crossing, legal advice has been sought from Council's legal team to understand the implications from a staff perspective. This includes:
  - 3.4.1 Feasibility of altering or relocating the speed hump and buildouts to allow property access.
  - 3.4.2 Council's obligations under relevant planning and transport regulations.
  - 3.4.3 Liability considerations, including whether Council may be responsible for costs associated with modifying the speed hump to accommodate the proposed vehicle crossing.

### 4. Background/Context Te Horopaki

#### Approval of Neighbourhood Greenway Cycleway

- 4.1 The Neighbourhood Greenway Cycleway project was developed to enhance safety and accessibility for pedestrians and cyclists in the local area, particularly around schools and residential streets. The project aims to create a low-speed, shared-use environment through the installation of sharrow markings, speed humps, bollards, signage, and green surface treatments.
- 4.2 The section of the Neighbourhood Greenway Cycleway between London Street and North Parade was approved by Council on 21 September 2023 as item 8 of the proposed Transport Choices programme of works, and is shown in **Attachment A**.



- 4.3 Following the cancellation of the Transport Choices programme, it was decided to proceed with only the section of the Neighbourhood Greenway Cycleway between North Avon Road and North Parade, utilising CRAF funding. This section is currently being constructed as described below.

Project Phasing and Implementation:

- 4.4 Stage One of the project focused on installing sharrow road markings to indicate shared road space for cyclists and vehicles.
- 4.4.1 This work was completed between 22 March and 24 March 2025 along Nicholls Street, Dudley Street, and Stapletons Road up to Averill Street intersection.
- 4.4.2 Residents were notified via a Start Works Notice distributed one week prior to commencement.
- 4.5 Stage Two involved installing two speed humps and buildouts on Averill Street (between numbers 41 and 45), along with line markings, bollards, and signage near the school zone. It also involved completing the installation of sharrow road markings along Averill Street, starting from the Stapletons Road/Averill Street intersection.
- 4.5.1 This was scheduled for delivery from 22 April to 27 April 2025.
- 4.5.2 A Start Works Notice was delivered to residents on 4 April 2025.
- 4.6 On 16 April 2025, it was identified that water ponding was occurring at the North Parade end of Averill Street (north side).
- 4.6.1 This was addressed via the maintenance contractor (HEB Construction) undertaking shoulder repair works from 48 Averill Street to North Parade, starting 28 April 2025 for two weeks.
- 4.6.2 As a result, the installation of line markings, bollards, and signage in front of the school was deferred to mid-May 2025, following the completion of the maintenance contractor's works. Further delays occurred due to unsuitable weather conditions required for applying green surface paint.
- 4.7 The two speed humps and associated buildouts were successfully installed between 41 and 45 Averill Street as planned during the 22 – 27 April 2025 window.

Post-Construction Issue: Vehicle Crossing Application:

- 4.8 On 29 May 2025, it was brought to the attention of the project team that building and resource consents had been approved for 45 Averill Street, which resulted in the proposed vehicle crossing conflicting with the recently constructed speed hump and buildouts (constructed as part of the Neighbourhood Greenway Cycleway project).
- 4.9 The development plans, which had Building and Resource consents approved in May 2025, included a request to relocate the vehicle crossing from the western to the eastern end of the property frontage – directly where a speed hump and buildouts had been installed.
- 4.9.1 The vehicle crossing application received is currently under review.
- 4.10 On 13 June 2025, Council staff met with the property owner, who is also the developer, to discuss a way forward. During the meeting, staff presented a couple of potential solutions, recommending the option deemed to be the safest.
- 4.10.1 The owner expressed support for any of the proposed options, provided that construction trucks for the development would have access to the new vehicle crossing by August 2025, highlighting the urgency of the matter.

- 4.10.2 Council staff advised that the proposed solution is subject to approval by the Community Board, with a decision expected at the next meeting on 10 July 2025.
- 4.10.3 Council staff will continue to keep the owner informed of any updates throughout the process.
- 4.11 The following related information session/workshops have taken place for the members of the meeting:

Date	Subject
21 Sept 2023	<a href="#">Transport Choices - Richmond Neighbourhood Greenway (item 8)</a>

### Options Considered Ngā Kōwhiringa Whaiwhakaaro

- 4.12 The following reasonably practicable options were considered and are assessed in this report:
- 4.12.1 Relocate the speed hump and buildouts
- 4.12.2 Remove the speed hump and amend buildouts at the cycleway transition point
- 4.13 The following option was considered but ruled out:
- 4.13.1 Do nothing - this was ruled out due to advice from the legal team (see section 6.8).

### Options Descriptions Ngā Kōwhiringa

- 4.14 **Recommended Option: Option 1** – Relocate the speed hump and buildouts
- 4.14.1 **Option Description:** Remove the speed hump and buildouts, and rebuild them 4 metres to the west of their current location as shown in **Attachment B**. This would avoid the conflict with the proposed vehicle crossing.
- 4.14.2 **Option Advantages**
- This option is broadly consistent with what has previously been approved.
  - This option aligns with the original project intent and retains the integrity of the design and its objectives: slowing traffic at the point where cyclists on the separated facility would be expected to transition onto the on-road cycleway.
  - Does not require additional consultation as the new location is still within the street frontage of the original properties.
- 4.14.3 **Option Disadvantages**
- Additional design and construction costs: relocation will require new design work and construction resources.
  - Potential delays: may extend the project timeline due to redesign, approvals, and the contractor scheduling.
- 4.15 **Option 2** – Remove the speed hump and amend buildouts at the cycleway transition point
- 4.15.1 **Option Description:** Remove the eastern speed hump, and amend the location and length of the eastern buildouts as shown in **Attachment C**. This would avoid the conflict with the proposed vehicle crossing.
- 4.15.2 **Option Advantages**
- Simpler implementation: may be quicker and less risky to deliver as it avoids complete removal and reinstallation of all the existing infrastructure.

- Lower immediate cost: avoids the expense of reconstructing the speed hump
- Does not require additional consultation as the new location is still within the street frontage of the original properties.

#### 4.15.3 Option Disadvantages

- This option differs more substantially from what has previously been approved
- This does not fully meet the original project objectives: the removal of the eastern hump will result in less effective speed management and therefore potential safety concerns at a key decision point where cyclists transition from a separated cycleway (outside the school) to a greenway cycle treatment. This requires cyclists travelling in a westerly direction to cross two traffic lanes.

### Analysis Criteria Ngā Paearu Wetekina

4.16 The following criteria were used to assess the available options and determine the most appropriate course of action:

- 4.16.1 Staff have recommended option 1 as it preserves the integrity of the original design, and provides a higher level of service to users of the cycleway
- 4.16.2 However, it is noted that this requires additional funding over the alternative design, which will limit the amount of additional work that could be delivered under the CRAF programme

## 5. Financial Implications Ngā Hīraunga Rauemi

### Capex/Opex Ngā Utu Whakahaere

	Recommended Option – Option 1 – Relocate the Speed Humps and Buildouts	Option 2 – Construct Buildouts at the Cycleway Transition Point
Cost to Implement	\$46,000 <i>(this is based on pricing from the contractor)</i>	\$31,000 <i>(this is based on pricing from the contractor)</i>
Maintenance/Ongoing Costs	To be covered under the roading maintenance contract: the effect will be negligible compared to the approved design	To be covered under the roading maintenance contract: the effect will be negligible compared to the approved design
Funding Source	#71496 Richmond CRAF – Neighbourhood Greenway Cycleway	#71496 Richmond CRAF – Neighbourhood Greenway Cycleway
Funding Availability	Available	Available
Impact on Rates	None *	None *

\* CRAF is a funding source from central government, so does not impact on rates

## 6. Considerations Ngā Whai Whakaaro

### Risks and Mitigations Ngā Mōrearea me ngā Whakamātautau

- 6.1 Risk in the delay of the relocation of the speed hump and buildouts. The impact is the project timeline may extend. To mitigate this risk, prioritise design and scheduling; engage contractors early to secure availability.
- 6.2 Risk that changes may adversely impact access to the new development. Staff have met with the developer to ensure that any designs are aligned with the plans for construction

- 6.3 Low risk with community dissatisfaction due to changes. The impact could be negative public perception. The mitigation is to provide clear communication and rationale; highlight safety benefits of the relocation.
- 6.4 High risk of weather-related delays (e.g. for green paint application). The impact is further postponement of the construction works. The mitigation is to monitor forecasts closely; schedule work during optimal weather windows.
- 6.5 There is a risk of budget overrun due to redesign and relocation. This can be impacted by reassessing budget allocations and seeking contingency funding if necessary.
- 6.6 High risk of reduced traffic calming measures if the speed hump is removed. The impact is constructing a design which is less safe than the original design. Mitigation measures include ensuring relocation of the hump maintains original intent and effectiveness of the Neighbourhood Greenway Cycleway design.

### Legal Considerations Ngā Hīraunga ā-Ture

- 6.7 Statutory and/or delegated authority to undertake proposals in the report:
  - 6.7.1 The Community Boards have delegated authority from the Council to exercise the delegations as set out in the Register of Delegations. The list of delegations for the Community Boards includes the resolution of stopping restrictions and traffic control devices.
  - 6.7.2 The installation of any signs and/or markings associated with traffic control devices must comply with the Land Transport Rule: Traffic Control Devices 2004.
- 6.8 Other Legal Implications:
  - 6.8.1 Staff have sought advice from the Council's legal team. Their opinion is that if Council was to now seek to require the developer to relocate the vehicle crossing at a different point, if that is possible, and that incurs the developer in additional cost, we would imagine that the developer would seek damages from the Council which would be difficult for the Council to oppose.

### Strategy and Policy Considerations Te Whai Kaupapa here

- 6.9 The required decision:
  - 6.9.1 Aligns with the [Christchurch City Council's Strategic Framework](#).
  - 6.9.2 Is assessed as medium significance based on the Christchurch City Council's Significance and Engagement Policy. The level of significance was determined by a high level of local community interest.
  - 6.9.3 Is consistent with Council's Plans and Policies.
- 6.10 This report supports the [Council's Long Term Plan \(2024 - 2034\)](#):
- 6.11 Transport
  - 6.11.1 Activity: Transport
    - Level of Service: 10.5.39 Increase the numbers of people cycling in the central city - >=2,000 cyclists
    - Level of Service: 10.0.2 Increase the share of non-car modes in daily trips - >=37% of trips undertaken by non-car modes

### Community Impacts and Views Ngā Mariu ā-Hāpori

- 6.12 No specific public consultation has been undertaken on this measure. The proposed options are limited to the frontages of the same properties as the original scheme
- 6.13 Staff have met with the property developer for 45 Averill Street.
  - 6.13.1 Their concern is around providing access into the proposed new vehicle crossing on the eastern side of the property. They did not express any clear preference for either of the options proposed.
  - 6.13.2 Their primary concern is around timing: the access needs to be ready for use from mid-August, so they are keen to see a swift resolution.
- 6.14 The Richmond Neighbourhood Greenway consultation was undertaken in mid-2023. This section of the route generally had strong support.
  - 6.14.1 Summary of feedback is available from page 294 of the Council agenda of 21 September 2023:  
[https://christchurch.infocouncil.biz/Open/2023/09/CNCL\\_20230921\\_AGN\\_9573\\_AT.PDF#page=294](https://christchurch.infocouncil.biz/Open/2023/09/CNCL_20230921_AGN_9573_AT.PDF#page=294)
  - 6.14.2 The Social pinpoint site - used during consultation - contains geographically located feedback, and remains available at: <https://ccc.mysocialpinpoint.com.au/way-safer-streets/way-safer-streets-map#/>
  - 6.14.3 The full details of each submission is available in Attachment B (page 308) of the Council agenda of 21 September 2023:  
[https://christchurch.infocouncil.biz/Open/2023/09/CNCL\\_20230921\\_AGN\\_9573\\_AT.PDF#page=308](https://christchurch.infocouncil.biz/Open/2023/09/CNCL_20230921_AGN_9573_AT.PDF#page=308)
- 6.15 The decision affects the following wards/Community Board areas:
  - 6.15.1 Waipapa Papanui-Innes-Central Community Board.

### Impact on Mana Whenua Ngā Whai Take Mana Whenua

- 6.16 The decision does not involve a significant decision in relation to ancestral land, a body of water or other elements of intrinsic value, therefore this decision does not specifically impact Mana Whenua, their culture, and traditions.
- 6.17 The decision does not involve a matter of interest to Mana Whenua and will not impact on our agreed partnership priorities with Ngā Papatipu Rūnanga.

### Climate Change Impact Considerations Ngā Whai Whakaaro mā te Āhuarangi

- 6.18 The decisions in this report are likely to:
  - 6.18.1 Contribute neutrally to adaptation to the impacts of climate change.
  - 6.18.2 Contribute neutrally to emissions reductions.
- 6.19 The scope of the change is minor, and the options proposed are attempting to retain the usability of the approved cycleway (and therefore the expected emissions reductions) while providing access to the proposed development.







## 7. Next Steps Ngā Mahinga ā-muri

- 7.1 Finalise design for relocated speed hump and buildouts.
- 7.2 Co-ordinate with developer at 45 Averill Street regarding vehicle crossing.
- 7.3 Make changes to the speed hump and buildout





Attachments Ngā Tāpirihanga

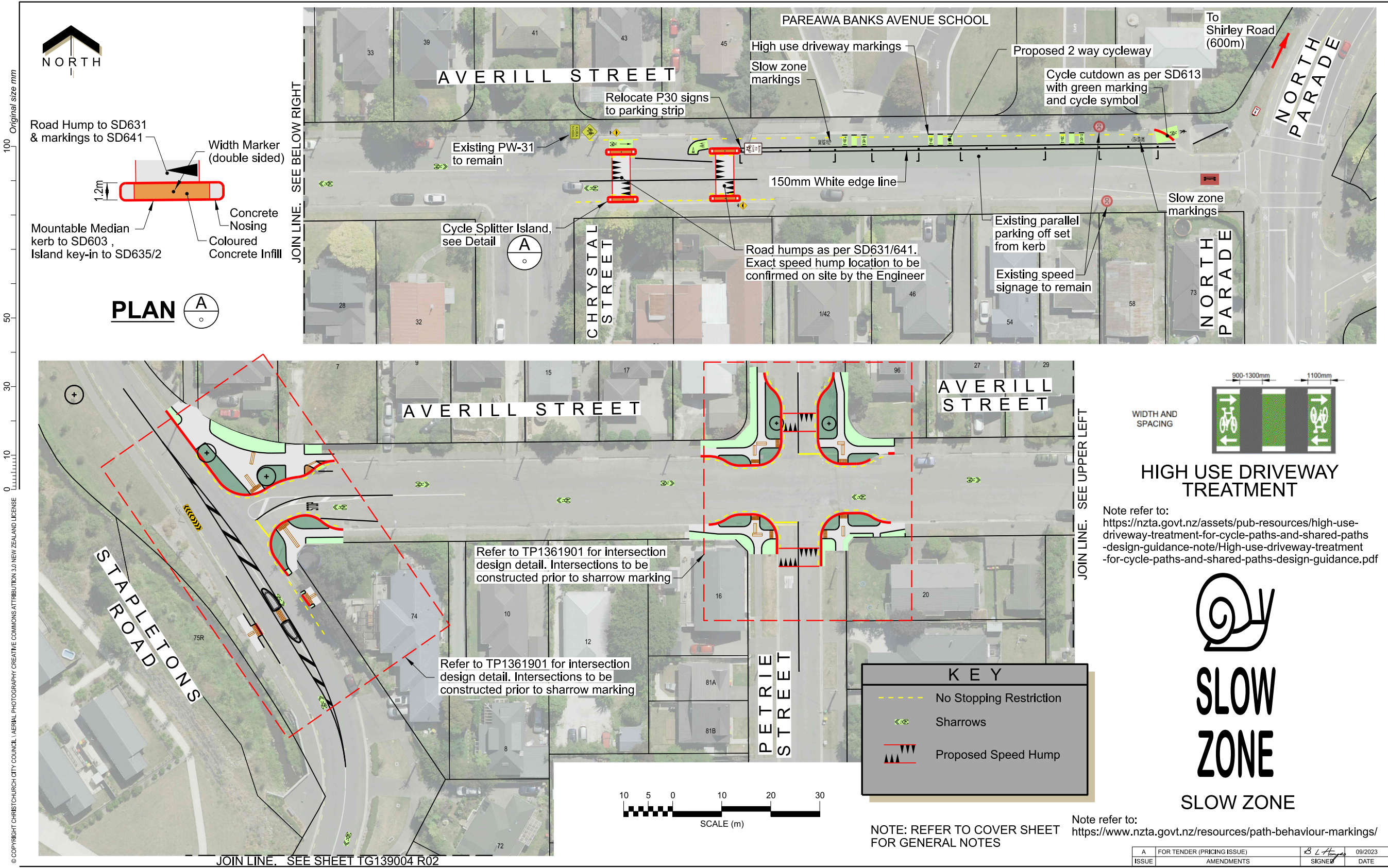
No.	Title	Reference	Page
A  	Approved Neighbourhood Greenway Cycleway plan - Averill Street Section	25/1222806	21
B  	45 Averill St proposed changes for Approval	25/1205318	22
C  	45 Averill St - Option 2	25/1234384	23




In addition to the attached documents, the following background information is available:

Document Name - Location / File Link
Not applicable

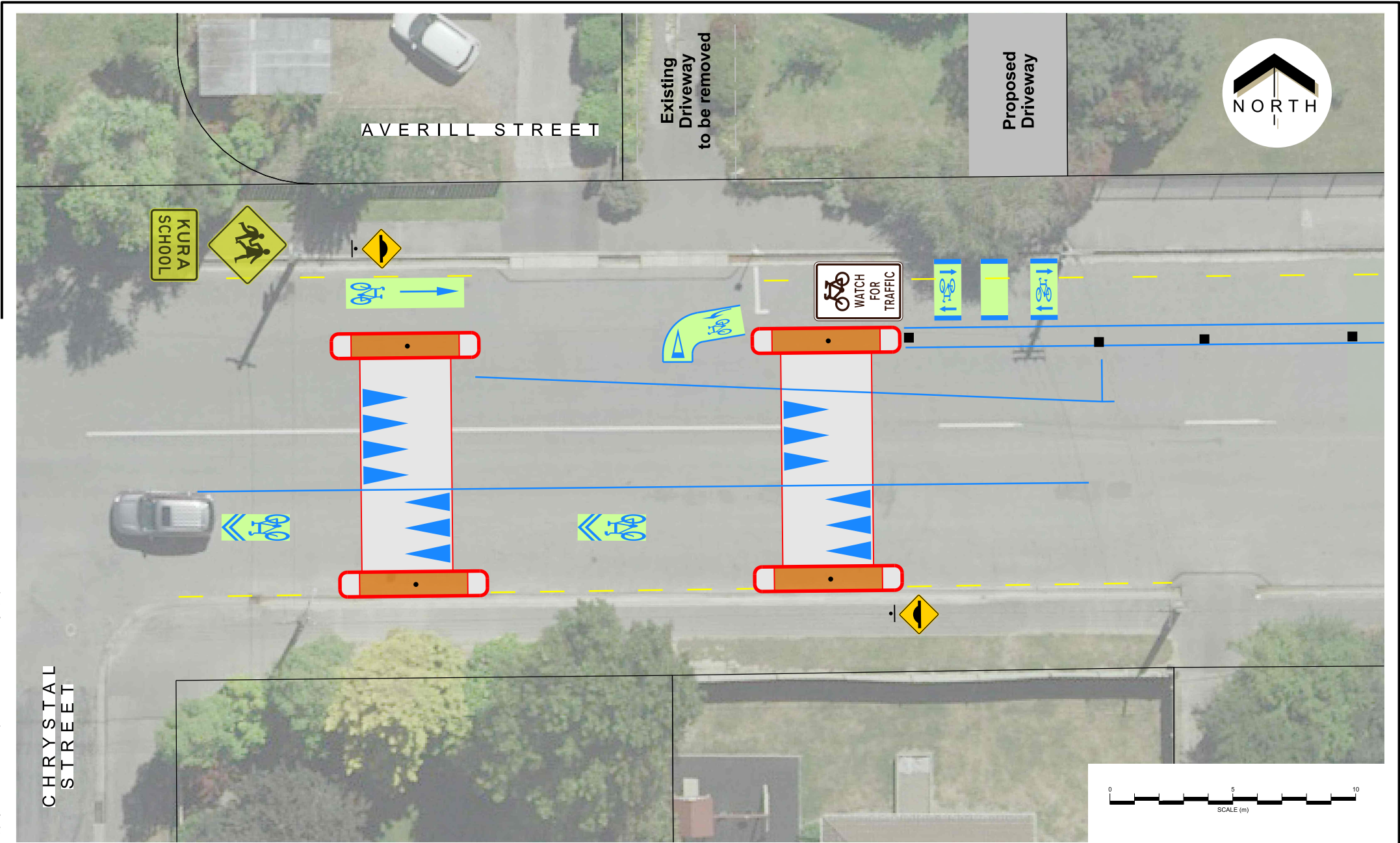
Signatories Ngā Kaiwaitohu

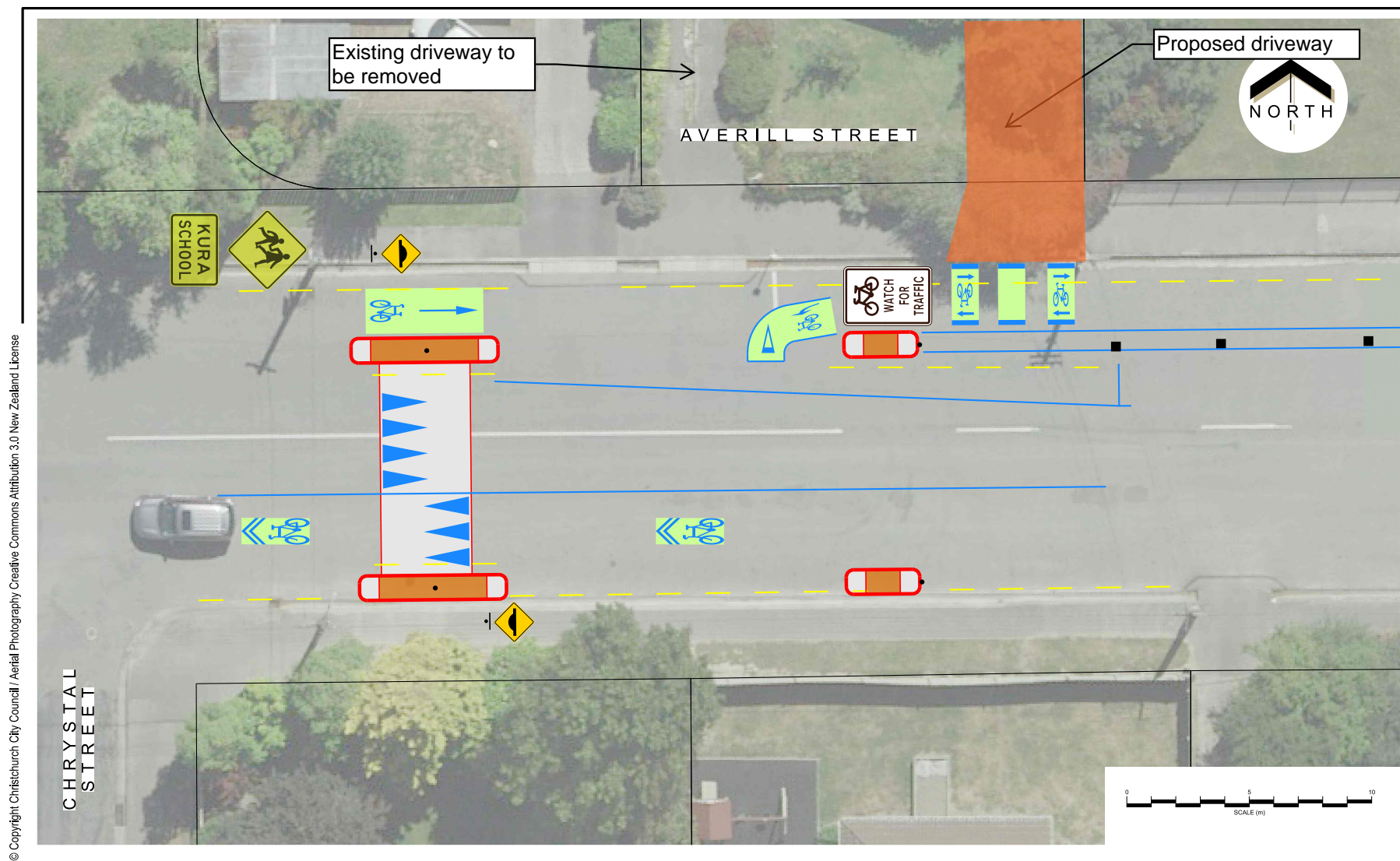
Authors	Lisa-Maria Biggar - Junior Project Manager Katie Smith - Project Manager Matt Goldring - Transport Team Leader Project Management Tom Williams - Senior Traffic engineer Jacob Bradbury - Manager Planning & Delivery Transport Ron Lemm - Manager Legal Service Delivery
Approved By	Matt Goldring - Transport Team Leader Project Management Jacob Bradbury - Manager Planning & Delivery Transport Ron Lemm - Manager Legal Service Delivery Stephen Wright - Manager Operations (Transport)



<div><div>Christchurch</div><div>City Council</div></div> <div><div>TECHNICAL SERVICES &amp; DESIGN</div></div>	DATUM	C.D.D.		NAME	SIGNED	DATE	APPROVED		PROJECT TITLE	RICHMOND NEIGHBOURHOOD GREENWAY		DOCUMENT NUMBER		ORIGINAL SHEET SIZE	SCALES			
	BENCH MK.		DESIGNED	T.Williams	TW	09/2023	FOR TENDER					-			1:700			
	RL		DES. REVIEW	R.McGusty		09/2023	NAME	BARRY HAYES				DRAWING TITLE	TRANSPORT CHOICES 2022	CAD DRAWING FILE REF.		A3	SHEET	
	SURVEY		DRAWN	M.Rhind			SIGNED							TG139004				
	SURVEY LB		DRW. CHECK	M.Duggan			DATE	28/09/23						TSD PROJECT FILE NUMBER				
			FILE LOCATION				FOR CONSTRUCTION							CP503578/06		R03 OF 03		
							NAME	-										
							SIGNED											
	DRAIN. REF.		S:\Data\Gdn\8\Traffic\ig1300\ig139004.dgn				DATE	-										
	SAP WBS		PRINTED ON 19/09/2023 BY M RHIND															







## 8. 159 Cranford Street - P5 Parking Restrictions

Reference Te Tohutoro: 25/1207561

Responsible Officer(s) Te Pou Matua: Sally-Ann Marshall, Traffic Engineer

Accountable ELT Member Pouwhakarae: Brent Smith, General Manager City Infrastructure

### 1. Purpose and Origin of the Report Te Pūtake Pūrongo

- 1.1 For the Waipapa Papanui-Innes-Central Community Board to approve a change to the timed parking restrictions adjacent to 159 Cranford Street.
- 1.2 This report has been written following concerns raised by a local business. They have requested some shorter-term parking to better suit the needs of their customers.
- 1.3 The recommended option, as shown on **Attachment A**, is to change one of the current 60-minute timed parking restrictions to five-minutes.

### 2. Officer Recommendations Ngā Tūtohu

That the Waipapa Papanui-Innes-Central Community Board:

1. Receives the information in the 159 Cranford Street - P5 Parking Restrictions Report.
2. Notes that the decision in this report is assessed as low significance based on the Christchurch City Council's Significance and Engagement Policy.
3. Revokes any previous resolutions pertaining to traffic controls made pursuant to any bylaw to the extent that they are in conflict with the parking or stopping restrictions described in resolutions 4-6 below.
4. Approves that, in accordance with Clause 7 of the Christchurch City Council Traffic and Parking Bylaw 2017, the stopping of vehicles be prohibited at any time on the western side of Cranford Street, commencing at its intersection with Westminster Street and extending in a northerly direction for a distance of ten metres as shown on **Attachment A**, plan TG151624, Issue 2, dated 23/06/2025.
5. Approves that, in accordance with Clause 7 of the Christchurch City Council Traffic and Parking Bylaw 2017, the parking of all vehicles be restricted to a maximum period of 60 minutes on the western side of Cranford Street, commencing at a point ten metres north of its intersection with Westminster Street and extending in a northerly direction for a distance of 24.5 metres as shown on **Attachment A**, plan TG151624, Issue 2, dated 23/06/2025. This restriction is to apply at other times to the clearway, which applies 4:00 – 6:00pm, Monday to Friday.
6. Approves that, in accordance with Clause 7 of the Christchurch City Council Traffic and Parking Bylaw 2017, the parking of all vehicles be restricted to a maximum period of five minutes on the western side of Cranford Street, commencing at a point 34.5 metres north of its intersection with Westminster Street and extending in a northerly direction for a distance of 5.5 metres as shown on **Attachment A**, plan TG151624, Issue 2, dated 23/06/2025. This restriction is to apply at other times to the clearway, which applies 4:00 – 6:00 pm, Monday to Friday.



7. Approves that these resolutions take effect when parking signage and/or road markings that evidence the restrictions described in this staff report are in place (or removed in the case of revocations).

### 3. Executive Summary Te Whakarāpopoto Maua

- 3.1 A local business has requested some shorter-term parking be provided adjacent to their business.
- 3.2 The existing time restricted parking spaces in this commercial area are all currently 60 minutes.
- 3.3 All of the businesses within the Cranford Street / Westminster Street intersection have been consulted. The recommended option has been informed from this feedback.
- 3.4 The recommended option, as shown on **Attachment A**, is to change one of the current 60-minute timed parking restrictions to 5 minutes.

### 4. Background/Context Te Horopaki

- 4.1 Concerns have been raised by a local business about the lack of parking turnover outside their premises.
- 4.2 There are approximately six 60-minute parking spaces on the west side of Cranford Street, north of the Westminster Street intersection, adjacent to the business that put through the request.
- 4.3 Currently all the time restricted parking spaces within the commercial area at the Cranford Street and Westminster Street intersection are 60-minutes. This includes:
- The six spaces noted in 4.2
  - Four spaces on the north side of Westminster Street, on the east side of Cranford Street
  - Two spaces on the east side of Cranford Street, 34 metres south of the intersection with Westminster Street.
- 4.4 The business is finding that there are rarely spaces available directly outside their premises for customers, who only usually stay for a few minutes.
- 4.5 Another issue that has been reported is that vehicles are parking here all day.
- 4.6 The parking spaces are located within a clearway that applies 4:00 – 6:00 pm, Monday to Friday as detailed on Plan TP363402, Sheet 2, dated 30/09/2024, refer to **Attachment B**. The proposed time restriction changes will therefore apply at other times.
- 4.7 Following the bus lane implementation, approximately 54 on-street parking spaces are available within a 150-metre walking distance (approximately within two minutes at a walking speed of 1.2 m/s) from the Cranford Street/Westminster Street intersection, as shown in **Table 1** below.
- 4.8 The small length no stopping restriction section to the immediate north of the intersection with Westminster Street has been resolved as part of the recently approved clearway, refer **Attachment B**. It has been included here for consistency of resolutions from the Westminster Street intersection.

Location	Side	Unrestricted	P3	P30	P60	Total
Cranford St 150m north of the intersection	East	8				19
	West	6			5	
Westminster St 100m east of the intersection	North	5		7		18
	South			6		
Cranford St 150m South of the intersection	East	7			2	9
	West					
Westminster St 100m west of Cranford St	North	6				8
	South		2			
<b>Total</b>		<b>32</b>	<b>2</b>	<b>13</b>	<b>7</b>	<b>54</b>

**Table 1 - Available parking spaces on Cranford Street outside the bus lane operation hours**

- 4.9 If approved, the recommendations will be implemented as part of the DEMP construction work. These are likely to go ahead in October 2025.

### Options Considered Ngā Kōwhiringa Whaiwhakaaro

- 4.10 The following reasonably practicable options were considered and are assessed in this report:

4.10.1 Change one of the existing 60-minute time restricted spaces on the west side of Cranford Street to 5 minutes.

4.10.2 Do nothing.

- 4.11 The following option was initially considered but has been ruled out:

4.11.1 Change two of the existing 60-minute time restricted spaces on the west side of Cranford Street to 10 minutes.

This proposal was ruled out following consultation with the adjacent businesses, refer Section 6.7 for Community Impacts and Views.

### Options Descriptions Ngā Kōwhiringa

- 4.12 **Preferred Option:** Change one of the existing 60-minute time restricted spaces on the west side of Cranford Street to 5 minutes, as shown on **Attachment A**.

4.12.1 **Option Description:** Change one of the existing 60 minutes time restricted parking spaces on the west side of Cranford Street, north of its intersection with Westminster Street to a 5-minute time restricted parking space.

#### 4.12.2 Option Advantages

- Will improve the vehicle turnover of this parking spaces.
- Provides some shorter-stay parking for customers, improving access to businesses whose customer base is better served by a shorter time limit.
- Better aligns with varying customer needs, as currently all of the time restricted spaces in this commercial area are 60-minutes.

#### 4.12.3 Option Disadvantages

- Some vehicles may overstay the proposed 5 minutes, requiring parking enforcement to attend. This is also the case the with the existing 60-minute time limit however and it is anticipated that the shorter duration will still encourage higher turnover.
- Removes one longer-term parking space for customers who are better served by a longer time limit.

- Minor signage replacement costs.

4.13 **Alternative Option:** Do nothing.

4.13.1 **Option Description:** Retain the existing six 60-minute time restricted parking spaces on the west side of Cranford Street.

4.13.2 **Option Advantages**

- No costs for signage changes.

4.13.3 **Option Disadvantages**

- Does not address some business owner concerns about the lack of shorter-term parking options.
- Existing 60-minute time limits do not meet the customer needs for some of the businesses on the west side of Cranford Street.

## 5. Financial Implications Ngā Hīraunga Rauemi

### Capex/Opex Ngā Utu Whakahaere

	Recommended Option	Option 2 – Do nothing
Cost to prepare report	\$500	\$500
Cost to Implement	\$500	N/A
Maintenance/Ongoing Costs	Minimal cost to overall maintenance contract.	N/A
Funding Source	DEMP	N/A
Funding Availability	Available	N/A
Impact on Rates	Negligible	N/A

## 6. Considerations Ngā Whai Whakaaro

### Risks and Mitigations Ngā Mōrearea me ngā Whakamātautau

6.1 N/A

### Legal Considerations Ngā Hīraunga ā-Ture

6.2 Statutory and/or delegated authority to undertake proposals in the report:

- 6.2.1 Part 1, Clause 7 of the Christchurch City Council Traffic and Parking Bylaw 2017 provides Council with the authority to install parking or stopping restrictions by resolution.
- 6.2.2 The Community Boards have delegated authority from the Council to exercise the delegations as set out in the Register of Delegations. The list of delegations for the Community Boards includes the resolution of stopping and traffic control devices.
- 6.2.3 The installation of any signs and/or markings associated with traffic control devices must comply with the Land Transport Rule: Traffic Control Devices 2004.

6.3 Other Legal Implications:

- 6.3.1 There is no other legal context, issue, or implication relevant to this decision.

### Strategy and Policy Considerations Te Whai Kaupapa here

6.4 The required decision:

- 6.4.1 Aligns with the [Christchurch City Council's Strategic Framework](#).

- 6.4.2 Is assessed as low significance based on the Christchurch City Council's Significance and Engagement Policy.
- 6.4.3 Is consistent with Council's Plans and Policies.
- 6.5 This report supports the [Council's Long Term Plan \(2024 - 2034\)](#):
- 6.6 Transport
  - 6.6.1 Activity: Transport
    - Level of Service: 10.3.3 Maintain customer satisfaction with the ease of use of Council on-street parking facilities - >=50%

### Community Impacts and Views Ngā Mariu ā-Hāpori

- 6.7 The majority of business owners within the Cranford Street/Westminster Street intersection commercial area were consulted face to face about the proposed parking time restriction change.
- 6.8 Five businesses directly adjacent to the proposed parking space change and two on the opposite side of the road were also provided with a letter and plan.
- 6.9 The majority supported there being some provision made for shorter term parking.
- 6.10 Three businesses did not initially want the parking time restriction limits to be changed. They were initially consulted on two of the spaces being changed to 10-minutes. However, following discussions, they agreed to one 5-minute parking space.
- 6.11 Staff consider this to be a reasonable compromise that still provides a shorter-term parking space for the business who initially requested it.
- 6.12 Other feedback was that there was concern relating to the general amount of parking available in the vicinity, with challenges being posed by the:
  - amount of no stopping within the intersection; and
  - parking that was removed to accommodate the bus lane.
- 6.13 The Team Leader Parking Compliance supports the recommendation.
- 6.14 The decision affects the following wards/Community Board areas:
  - 6.14.1 Waipapa Papanui-Innes-Central Community Board

### Impact on Mana Whenua Ngā Whai Take Mana Whenua

- 6.15 The decision does not involve a significant decision concerning ancestral land or a body of water or other elements of intrinsic value, therefore this decision does not specifically impact Mana Whenua, their culture and traditions.
- 6.16 The decision includes minor work which is contained within the roadway.





### Climate Change Impact Considerations Ngā Whai Whakaaro mā te Āhuarangi

- 6.17 This is a minor proposal that is principally intended to address parking concerns at this location. Due to the minor nature of the works, it is not expected to have any impact towards adaption to the impacts of climate change or emissions reductions.

## 7. Next Steps Ngā Mahinga ā-muri

- 7.1 If approved, staff will arrange for new signage and road markings to be installed as part of the DEMP construction works.

Attachments Ngā Tāpirihanga

No.	Title	Reference	Page
A  	Attachment A - 159 Cranford Street, Proposed Parking Restrictions	25/1237506	31
B  	Attachment B - Approved Plan Showing Clearway Times	25/1222506	32

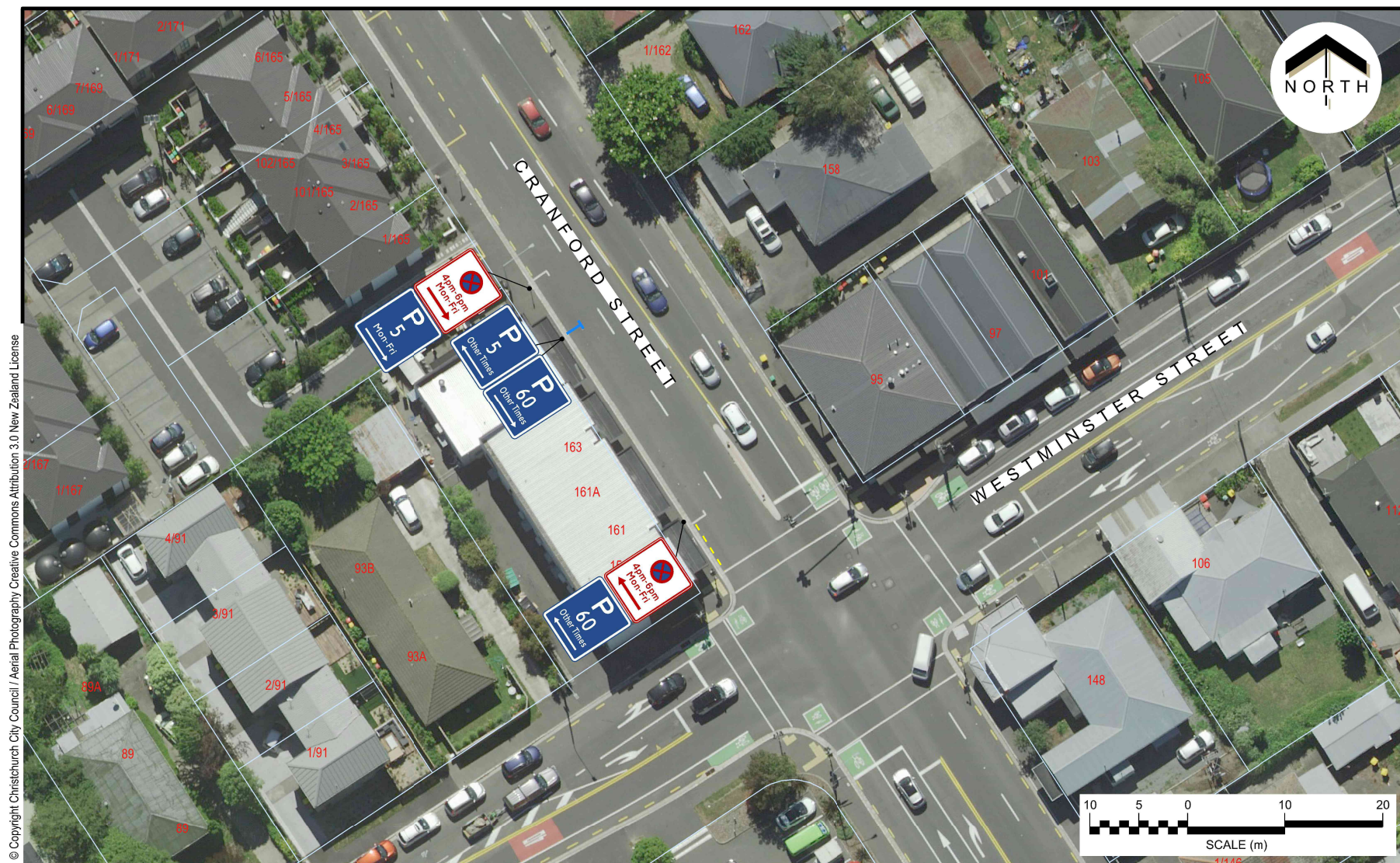
In addition to the attached documents, the following background information is available:

Document Name – Location / File Link
Not applicable

Signatories Ngā Kaiwaitohu

Authors	Sally-Ann Marshall - Traffic Engineer David Sun - Project Manager
Approved By	Gemma Dioni - Principal Advisor Transportation - Safety Stephen Wright - Manager Operations (Transport)





Christchurch  
City Council

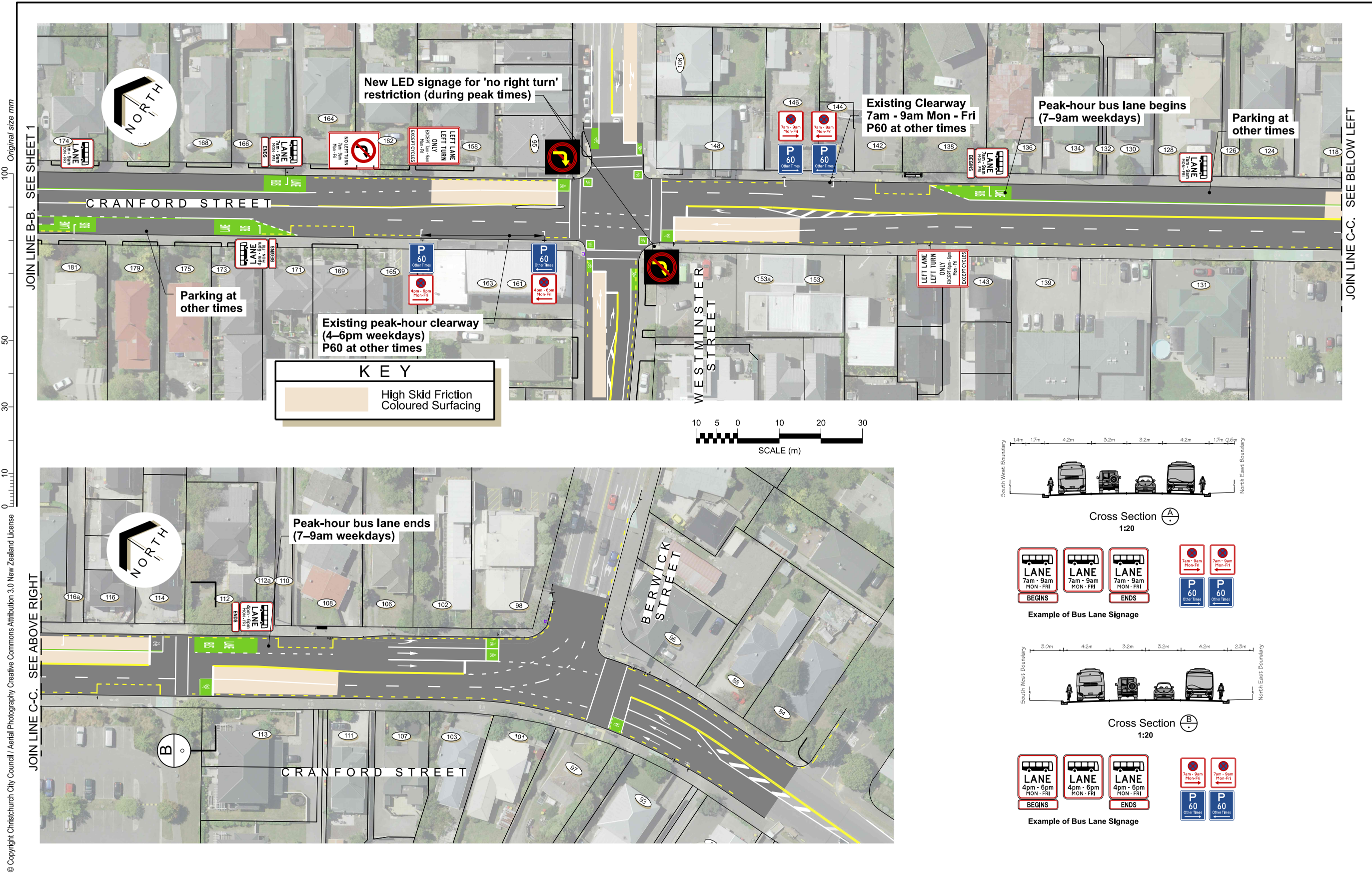
159 Cranford Street  
Proposed Parking Restrictions  
For Board Approval

Attachment A

Original Plan Size: A4

Drawn: VMI Issue 2 23/06/2025  
Designed: SM Drawing: TG151624  
Approved: GD Project:





## 9. Wairakei Road - Proposed P3 Parking Restriction

Reference Te Tohutoro: 25/1061437

Responsible Officer(s) Te Pou Matua: Sally-Ann Marshall, Traffic Engineer

Accountable ELT Member Pouwhakarae: Brent Smith, General Manager City Infrastructure

### 1. Purpose and Origin of the Report Te Pūtake Pūrongo

- 1.1 The purpose of this report is for the Waipapa Papanui-Innes-Central Community Board to approve P3 time restricted parking, and a section of no stopping restriction adjacent to Wairakei School on Wairakei Road.
- 1.2 The decisions in this report are of low significance in relation to the Christchurch City Council's Significance and Engagement Policy. The level of significance was determined by the low level of impact and low number of people affected by the recommended decision.
- 1.3 The community engagement and consultation outlined in this report reflect the assessment.
- 1.4 The recommended option is to provide P3 time restricted parking spaces in accordance with **Attachment A**.

### 2. Officer Recommendations Ngā Tūtohu

That the Waipapa Papanui-Innes-Central Community Board:

1. Receives the information in the Wairakei Road - Proposed P3 Parking Restriction Report.
2. Notes that the decision in this report is assessed as low significance based on the Christchurch City Council's Significance and Engagement Policy.
3. Revokes any previous resolutions pertaining to traffic controls made pursuant to any bylaw to the extent that they are in conflict with the traffic controls described in resolutions 4 and 5 below.
4. Approves that in accordance with Clause 7 of the Christchurch City Council Traffic and Parking Bylaw 2017, that the parking of vehicles be restricted to a maximum period of 3 minutes on the northern side of Wairakei Road, commencing at a point 117 metres south-east of its intersection with Greers Road and extending in a south-easterly direction for a distance of 69 metres as shown on plan TG151611, Issue 2, dated 09/06/2025, refer **Attachment A**. This restriction is to apply on School Days Only, between the hours of 8:15am to 9:15am and 2:30pm to 3:30pm.
5. Approves that, in accordance with Clause 7 of the Christchurch City Council Traffic and Parking Bylaw 2017, the stopping of all vehicles be prohibited at all times on the northern side of Wairakei Road commencing at its intersection with Manor Place and extending in north-westerly direction for a distance of 66 metres as shown on plan TG151611, Issue 2, dated 09/06/2025, refer **Attachment A**.
6. Approves that these resolutions take effect when parking signage and/or road markings that evidence the restrictions described in this staff report are in place (or removed in the case of revocations).

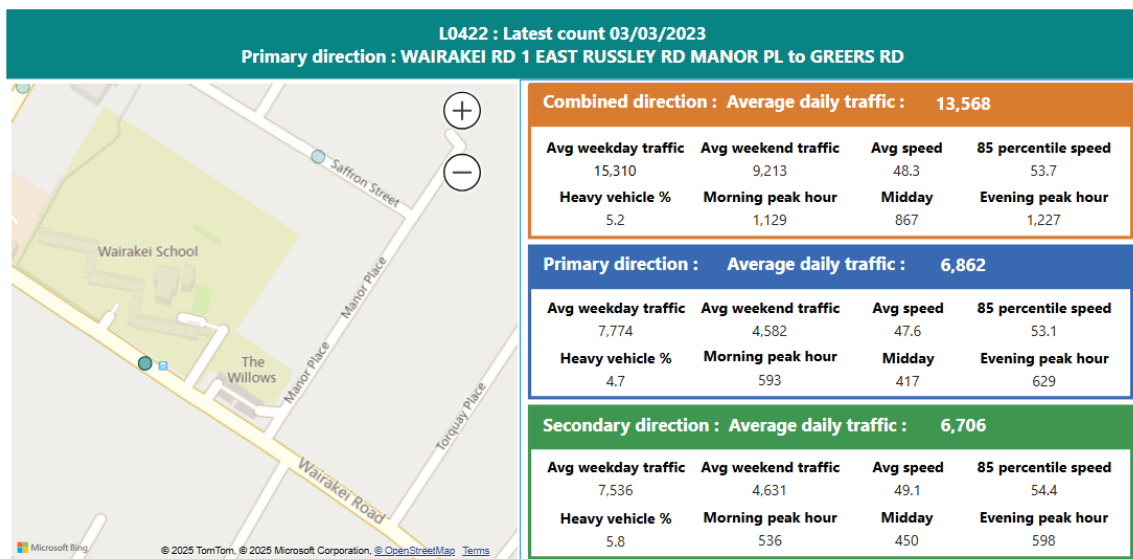


### 3. Executive Summary Te Whakarāpopoto Matua

- 3.1 This report has been written in response to a request from Wairakei School to provide some P3 time restricted spaces for drop off and pick up on Wairakei Road, in addition to a section of no stopping lines to stop parents parking too close to the driveway. This to improve safety for pedestrians, mainly school children, when getting to and from school.
- 3.2 The school does not currently have any P3 time restricted spaces for drop off and pick off.
- 3.3 The recommendations in this report will help to achieve the desired community outcome of a well-connected and accessible city through improved road safety.
- 3.4 Options within this report have been assessed against relevant industry-standard design guidance including the sight distance requirements.

### 4. Background/Context Te Horopaki

- 4.1 Wairakei School contacted Council with safety concerns relating to traffic congestion outside the school. They requested that staff investigate providing a pick-up and drop off zone. There is currently no dedicated parking for these times.
- 4.2 The main access for Wairakei School is located on Wairakei Road. The school frontage on Wairakei Road is approximately 174 metres long.
- 4.3 Wairakei Road is classified as a minor arterial road, and as such carries high daily traffic volumes.



- 4.4 Following discussions with the school, we are proposing to provide approximately twelve P3 time restricted parking spaces on the northern side of Wairakei Road. The spaces are all located along the school frontage.
- 4.5 Increasing the turnover of these spaces should enable parents to park in a location that means children do not have to cross Wairakei Road and will help relieve congestion pressure at drop of and pick up times.
- 4.6 The timed P3 parking restriction will apply between 8.15am to 9.15am and 2.30pm to 3.30pm, on school days only. These spaces will then be available for unrestricted parking out of these hours.

- 4.7 Policy 1 of the Christchurch Suburban Car Parking Policy details how suburban road space is to be prioritised.
- 4.7.1 This policy describes that certain kerb side road space will be prioritised over others, depending on whether it is a residential, commercial or other areas.
- 4.7.2 There is a commercial area at the Wairakei Road / Greers Road intersection and a kindergarten adjacent to Manor Place on the north side. The south side of Wairakei Road is primarily residential.
- 4.7.3 The proposal aims to provide a safer space for parents to drop off their children; as per Policy 1, Safety is given first priority in residential and commercial areas.
- 4.8 There have been three reported crashes at this location in the last five years: one minor and two non-injury. None were during school hours or related to school traffic:
- A motorcycle crashed whilst overtaking, this happened on a Saturday afternoon (Minor).
  - Vehicle veered off road and hit a powerpole on a Friday night (Non-injury).
  - Driver fell asleep whilst intoxicated and collided with parked car on Sunday morning (Non-injury).
- 4.9 Approval is required by the Waipapa Papanui-Innes-Central Community Board.
- 4.10 If approved, the recommendations will be implemented within the current financial year (generally around four weeks after the contractor receives the request, but this is subject to other factors such as resourcing and prioritisation beyond Council's control).

### Options Considered Ngā Kōwhiringa Whaiwhakaaro

- 4.11 The following reasonably practicable options were considered and are assessed in this report:
- Provide 12 P3 time restricted parking spaces along the college frontage on Wairakei Road.
  - Maintain the status quo – retain as unrestricted parking spaces.

### Options Descriptions Ngā Kōwhiringa

- 4.12 **Preferred Option:** Provide twelve P3 time restricted parking spaces along the school frontage on Wairakei Road.
- 4.12.1 **Option Advantages**
- Addresses the request from Wairakei School to provide a safer, dedicated drop-off and pick-up zone during school hours.
- 4.12.2 **Option Disadvantages**
- Removes 12 unrestricted on-street parking spaces on Wairakei Road outside the school during school times.
  - Physical sign and/or road marking changes required.
- 4.13 Maintain the status quo – retain as unrestricted parking spaces.
- 4.13.1 **Option Advantages**
- Retains 12 unrestricted on-street parking spaces on Wairakei Road outside the school.
  - No physical sign and/or road marking changes required.
- 4.13.2 **Option Disadvantages**

- 4.14 Does not address the request from Wairakei School to provide a safer, dedicated drop-off and pick-up zone during college hours.

## 5. Financial Implications Ngā Hiraunga Rauemi

### Capex/Opex Ngā Utu Whakahaere

	Recommended Option	Option 2 – Do nothing
Cost to Investigate	\$2,000 to write report in including consultation and site visits	\$2,000 to write report in including consultation and site visits
Cost to Implement	\$1500 to install signs and road markings	\$0
Maintenance/Ongoing Costs	Will be added to and covered by the area maintenance contract	\$0
Funding Source	Traffic Operations Team traffic signs and markings budget	n/a

## 6. Considerations Ngā Whai Whakaaro

### Risks and Mitigations Ngā Mōrearea me ngā Whakamātautau

- 6.1 None identified.

### Legal Considerations Ngā Hiraunga ā-Ture

- 6.2 Statutory and/or delegated authority to undertake proposals in the report:
- 6.2.1 Part 1, Clause 7 of the Christchurch City Council Traffic and Parking Bylaw 2017 provides Council with the authority to install parking or stopping restrictions by resolution.
  - 6.2.2 The Community Boards have delegated authority from the Council to exercise the delegations as set out in the Register of Delegations. The list of delegations for the Community Boards includes the resolution of stopping restrictions and traffic control devices.
  - 6.2.3 The installation of any signs and/or markings associated with traffic control devices must comply with the Land Transport Rule: Traffic Control Devices 2004.
- 6.3 Other Legal Implications:
- 6.3.1 There is no other legal context, issue, or implication relevant to this decision.
  - 6.3.2 This specific report has not been reviewed and approved by the Legal Services Unit however the report has been written using a general approach previously approved of by the Legal Services Unit, and the recommendations are consistent with the policy and legislative framework outlined in this report.

### Strategy and Policy Considerations Te Whai Kaupapa here

The required decision:

- 6.3.3 Aligns with the [Christchurch City Council's Strategic Framework](#)..
- 6.3.4 The recommendations in this report are consistent with the [Suburban Parking Policy](#).
- 6.3.5 The decisions in this report are assessed as low significance based on the Christchurch City Council's Significance and Engagement Policy. The level of significance was determined by the low level of impact and low number of people affected by the recommended decision.

- 6.4 The community engagement and consultation outlined in this report reflect the assessment.
- 6.5 This report supports the [Council's Long Term Plan \(2021 - 2031\)](#):
- 6.6 Transport
  - 6.6.1 Activity: Transport
    - Level of Service: 10.3.3 Maintain customer satisfaction with the ease of use of Council on-street parking facilities - >=50%

### **Community Impacts and Views Ngā Mariu ā-Hāpori.**

- 6.7 Consultation letters were sent out to the nineteen residents and property owners adjacent to where we are proposing to implement the time restricted spaces, advising the recommended option.
- 6.8 We received two responses:
  - One from a resident who was very much in favour of the proposals for safety of children.
  - The second respondent expressed concern that they currently have cars parking close to their driveway which restricts vision. They considered that the proposals would make this situation worse.
- 6.9 The restrictions we are proposing will only apply for an hour in the morning and hour in the afternoon. It is anticipated that by providing a drop off and pick zone the turnover of these spaces will be much higher and should alleviate congestion. This in turn should help with parking capacity during these times. Out of these times parking will remain unrestricted and so should not negatively affect the existing situation.
- 6.10 Having checked with our parking enforcement team, they currently do not have a record of call-outs for blocked vehicle access at the residents address. Staff have encouraged the resident to call Council when this happens so staff can use the data to see where there are specific problems that may require us to look at other options such as parking limit lines/ticks.
- 6.11 The Team Leader Parking Compliance supports the preferred option.
- 6.12 Wairakei School supports the proposal.
- 6.13 The do-nothing option is inconsistent with the school request to provide a time restricted drop off and pick up outside the school.
- 6.14 The decision affects the following wards/Community Board areas:
  - 6.14.1 Waipapa Papanui-Innes-Central.

### **Impact on Mana Whenua Ngā Whai Take Mana Whenua**

- 6.15 The decision does not involve a significant decision concerning ancestral land or a body of water or other elements of intrinsic value, therefore this decision does not specifically impact Mana Whenua, their culture and traditions.
- 6.16 The decision does not involve a matter of interest to Mana Whenua and will not impact on our agreed partnership priorities with Ngā Papatipu Rūnanga.


### **Climate Change Impact Considerations Ngā Whai Whakaaro mā te Āhuarangi**

- 6.17 The proposals in this report are unlikely to contribute significantly to adaptation to the impacts of climate change or emissions reductions.
- 6.18 This is a minor proposal that is principally intended to address parking space availability in this location. Due to the minor nature of the works, it is not intended to have any impact on climate change.

7. Next Steps Ngā Mahinga ā-muri

7.1 If approved, staff will arrange for new signs and road markings to be installed.

Attachments Ngā Tāpirihanga

No.	Title	Reference	Page
A 	Attachment A - Wairakei Road, Proposed P3 Parking Restrictions	25/1153844	39

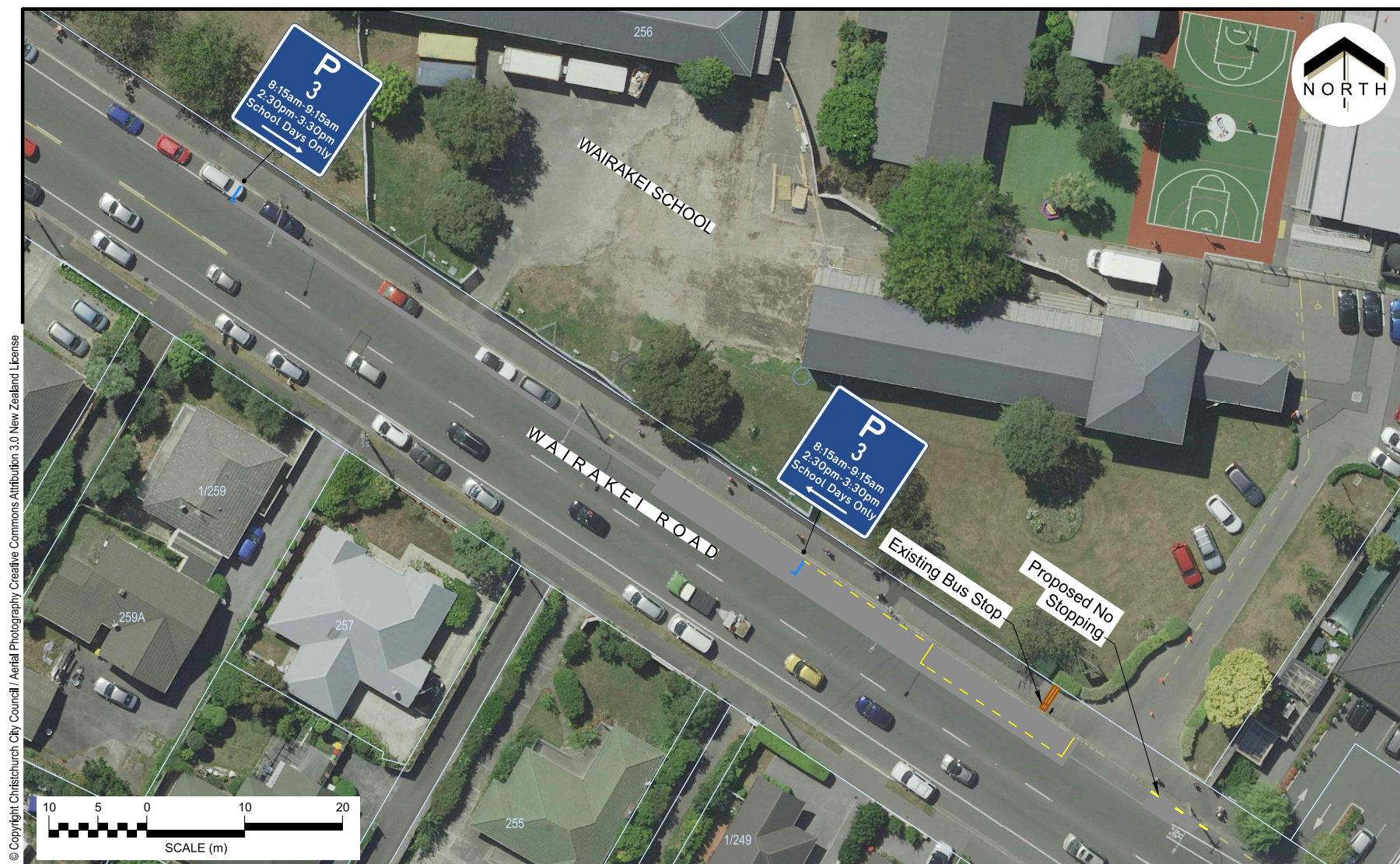
In addition to the attached documents, the following background information is available:

Document Name – Location / File Link
Not applicable

Signatories Ngā Kaiwaitohu

Author	Sally-Ann Marshall - Traffic Engineer
Approved By	Gemma Dioni - Principal Advisor Transportation - Safety Stephen Wright - Manager Operations (Transport)





Christchurch  
City Council

Wairakei Road  
Proposed P3 Parking Restrictions  
For Board Approval

Attachment A

Original Plan Size: A4

Drawn: VMI Issue 2 09/06/2025  
Designed: SM Drawing: TG151611  
Approved: LB Project:

## 10. Caledonian Road - Proposed P5 Loading Zone

Reference Te Tohutoro: 25/1040959

Responsible Officer(s) Te Pou Matua: Sally-Ann Marshall, Traffic Engineer

Accountable ELT Member Pouwhakarae: Brent Smith, General Manager City Infrastructure

### 1. Purpose and Origin of the Report Te Pūtake Pūrongo

- 1.1 The purpose of this report is for the Waipapa Papanui-Innes- Central Community Board to approve the installation of a P5 loading zone on Caledonian Road, outside Southern Cross Hospital.
- 1.2 This report has been written in response to a request from the Southern Cross Hospital Facilities Coordinator. The proposed loading zone has been requested to address concerns with service vehicle parking and access at this site.

### 2. Officer Recommendations Ngā Tūtohu

That the Waipapa Papanui-Innes-Central Community Board:

1. Receives the information in the Caledonian Road - Proposed P5 Loading Zone Report.
2. Notes that the decisions in this report are assessed as low significance based on the Christchurch City Council's Significance and Engagement Policy.
3. Revokes any previous resolutions pertaining to traffic controls made pursuant to any bylaw to the extent that they are in conflict with the parking or stopping restrictions described in resolution 4 below.
4. Approves that a loading zone be installed, in accordance with Clause 7 of the Christchurch City Council Traffic & Parking Bylaw 2017, on the west side of Caledonian Road, commencing at a point 38 metres north of its intersection with Bealey Avenue, and extending in a northerly direction for a distance of 15 metres. This loading zone is to be restricted to a maximum loading period of five minutes, between 6am and 4.30pm.
5. Approves that these resolutions take effect when parking signage and/or road markings that evidence the restrictions described in this staff report are in place (or removed in the case of revocations).

### 3. Executive Summary Te Whakarāpopoto Matua

- 3.1 Safety concerns relating to delivery vehicle access have been raised by the Facility Coordinator of Southern Cross Hospital. The hospital does have a loading bay, however at busy times, and especially for larger delivery vehicles, these vehicles do not have a safe place to wait.
- 3.2 Drivers are currently parking in locations that block access and visibility on the adjacent road space.

- 3.3 Due to the busy nature of this area and recognising the current operation of the site, the recommended option is to provide a dedicated P5 loading zone on Caledonian Road to assist with deliveries to the hospital.

#### 4. Background/Context Te Horopaki

- 4.1 The Southern Cross Hospital loading dock is located off Caledonian Road. This is where deliveries to the hospital are directed to.
- 4.2 The hospital notes that delivery trucks, including large trucks, are having to park in an unsafe way, especially at busy times of the day. These vehicles are regularly having to park in the driveway, over the footpath, or double park on Caledonian Road whilst waiting for access to the loading bay.
- 4.3 The access to the loading bay is 30 metres from a busy intersection with Bealey Avenue. This can be a hazard for vehicles coming around the corner from Bealey Avenue, and for any vehicles or pedestrians needing to access the back of the hospital, which is a busy thoroughfare.
- 4.4 There is a high parking demand in this area associated primarily with the hospital.
- 4.5 The on-street parking in this location, including the spaces proposed for the loading zone, are currently unrestricted.
- 4.6 Following discussions with the hospital, the loading zone would be restricted to 5 minutes, between 6am and 4.30pm, seven days a week.
- 4.7 If approved, the recommendations will be implemented within the current financial year (generally around four weeks after the contractor receives the request, but this is subject to other factors such as resourcing and prioritisation beyond Council's control).

#### Options Considered Ngā Kōwhiringa Whaiwhakaaro

##### Options Descriptions Ngā Kōwhiringa

- 4.8 **Preferred Option:** Mark a P5 Loading Zone on Caledonian Road.

##### 4.8.1 Option Advantages

- Provides a safe, dedicated space for delivery vehicles accessing Southern Cross Hospital.
- Addresses the safety concerns raised by the hospital regarding conflict between service vehicles and pedestrians accessing this site.
- Addresses the safety concerns raised by the hospital regarding conflict between service vehicles and vehicles turning off Bealey Avenue.

##### 4.8.2 Option Disadvantages

- Removes three unrestricted car parks on Caledonian Road.

- 4.9 **Alternative Option:** Do nothing, maintain the status quo

##### 4.9.1 Option Advantages

- This option maintains unrestricted parking that is used by hospital staff and visitors.

##### 4.9.2 Option Disadvantages



- The disadvantages of this option are the opposite to those described for the preferred option above.

## 5. Financial Implications Ngā Hīraunga Rauemi

### Capex/Opex Ngā Utu Whakahaere

	Recommended Option	Option 2 – do nothing
Cost to Implement: Capital Operational	\$900 for signs, markings \$750 for staff time (reporting and investigation)	\$0 \$750 for staff time (reporting and investigation)
Maintenance/Ongoing Costs	Will be added to and covered by the area maintenance contract	\$0
Funding Source	Traffic Operations Team Traffic Signs and Markings budget	n/a
Funding Availability	Funding available	n/a
Impact on Rates	Negligible	n/a

## 6. Considerations Ngā Whai Whakaaro

### Risks and Mitigations Ngā Mōrearea me ngā Whakamātautau

6.1 None identified.

### Legal Considerations Ngā Hīraunga ā-Ture

6.2 Statutory and/or delegated authority to undertake proposals in the report:

- 6.2.1 Part 1, Clause 7 of the Christchurch City Council Traffic and Parking Bylaw 2017 provides Council with the authority to install parking or stopping restrictions by resolution.
- 6.2.2 The Community Boards have delegated authority from the Council to exercise the delegations as set out in the Register of Delegations. The list of delegations for the Community Boards includes the resolution of stopping and traffic control devices.
- 6.2.3 The installation of any signs and/or markings associated with traffic control devices must comply with the Land Transport Rule: Traffic Control Devices 2004.

6.3 Other Legal Implications:

- 6.3.1 There is no other legal context, issue, or implication relevant to this decision.
- 6.3.2 This specific report has not been reviewed and approved by the Legal Services Unit however the report has been written using a general approach previously approved of by the Legal Services Unit, and the recommendations are consistent with the policy and legislative framework outlined in this report.

### Strategy and Policy Considerations Te Whai Kaupapa here

6.4 The required decision:

- 6.4.1 Aligns with the [Christchurch City Council's Strategic Framework](#).
- 6.4.2 The recommendations in this report are consistent with the Christchurch Suburban Parking Policy.
- 6.4.3 The decisions in this report are assessed as low significance based on the Christchurch City Council's Significance and Engagement Policy. The level of

significance was determined by the low level of impact and low number of people affected by the recommended decision.

6.5 The community engagement and consultation outlined in this report reflect the assessment.

6.6 This report supports the [Council's Long Term Plan \(2024 - 2034\)](#):

6.7 Transport

6.7.1 Activity: Transport

- Level of Service: 10.3.3 Maintain customer satisfaction with the ease of use of Council on-street parking facilities - >=50%

### Community Impacts and Views Ngā Mariu ā-Hāpori

6.8 All of the buildings that are immediately affected by the proposal are part of Southern Cross Hospital. The request originated from the hospital, Staff have also had confirmation from Nicole Forster, the General Manager, who has confirmed her approval.

6.9 The Team Leader Parking Compliance supports the preferred option.

6.10 The decision affects the following wards/Community Board areas:

6.10.1 Waipapa Papanui-Innes-Central.

### Impact on Mana Whenua Ngā Whai Take Mana Whenua

6.11 The decision does not involve a significant decision concerning ancestral land or a body of water or other elements of intrinsic value, therefore this decision does not specifically impact Mana Whenua, their culture and traditions.

6.12 The decision does not involve a matter of interest to Mana Whenua and will not impact on our agreed partnership priorities with Ngā Papatipu Rūnanga.


### Climate Change Impact Considerations Ngā Whai Whakaaro mā te Āhuarangi

6.13 The proposals in this report are unlikely to contribute significantly to adaptation to the impacts of climate change or emissions reductions.

## 7. Next Steps Ngā Mahinga ā-muri

7.1 If approved, staff will arrange for the loading zone to be installed.

## Attachments Ngā Tāpirihanga

No.	Title	Reference	Page
A 	Attachment A - Caledonian Road, Proposed Loading Zone	25/1047050	46

In addition to the attached documents, the following background information is available:

Document Name – Location / File Link
Not applicable

Signatories Ngā Kaiwaitohu

Author	Sally-Ann Marshall - Traffic Engineer
Approved By	Gemma Dioni - Acting Team Leader Traffic Operations/Principal Advisor Stephen Wright - Manager Operations (Transport)



© Copyright Christchurch City Council / Aerial Photography Creative Commons Attribution 3.0 New Zealand License

Christchurch  
City Council

Caledonian Road  
Proposed Loading Zone  
For Board Approval

Attachment A

Original Plan Size: A4

Drawn: VMI Issue 2 26/5/2025  
Designed: SM Drawing: TG151602  
Approved: LB Project:

## 11. Waipapa Papanui-Innes-Central Community Board Area Report - July 2025

Reference Te Tohutoro: 25/1039255

Responsible Officer(s) Te Emma Pavey, Community Governance Manager Papanui-Innes-  
Pou Matua: Central

Accountable ELT Andrew Rutledge, General Manager Citizens and Community  
Member Pouwhakarae:

### 1. Purpose of Origin of the Report Te Pūtake Pūrongo

- 1.1 This monthly staff-generated report provides the Board with an overview of initiatives and issues current within the Community Board area.

### 2. Officer Recommendations Ngā Tūtohu

That the Waipapa Papanui-Innes-Central Community Board:

1. Receives the information in the Waipapa Papanui-Innes-Central Community Board Area Report - July 2025.

### 3. Community Support, Governance and Partnership Activity

#### 3.1 Community Governance Projects

Activity	Detail	Timeline	Strategic Alignment
Youth Recreation	Staff are working in collaboration with youth-focused organisations to discuss potential opportunities in the Papanui, Innes and Central ward areas.	Ongoing	Te Haumako Te Whitingia Strengthening Communities Together Strategy
Youth Safety	A youth space has opened in Northlands Mall with the support of the Board's Better Off Fund, in collaboration with Papanui Youth Development Trust and Te Ora Hou. Participation numbers have been steady with young people using the space after school hours, often before catching buses from the bus exchange. It is anticipated that Wi-Fi in the youth space will be connected in the coming weeks.	Ongoing	Te Haumako Te Whitingia Strengthening Communities Together Strategy
Shirley Community Reserve	The Board resolved for staff to initiate the process to design an on-budget community building on the Reserve that will enable mixed use. The Working Group held its second meeting on 28 May. It was a productive gathering, with meaningful conversations and collaborative decision-making among all members.	Ongoing	Te Haumako Te Whitingia Strengthening Communities Together Strategy

	<p>The group continues to take a collective approach, ensuring that various perspectives are heard and valued. Several important questions were raised during the meeting, and these have been passed on to the appropriate individuals or organisations for response and follow-up.</p> <p>This ongoing engagement highlights the community's commitment to shaping the future of the Shirley Community Reserve together.</p>		
Revitalisation of Petrie Park	The Board approved the Petrie Park tree planting plan at its June 2025 meeting, and We Are Richmond's concept plan is subject to funding being acquired and all consenting requirements being met.	Ongoing	Te Haumako Te Whitingia Strengthening Communities Together Strategy
Safety Initiatives - CPTED	The CPTED report the Board funded with its Better Off Fund for MacFarlane Park, has been completed and presented back to the Board. Further discussions are underway about the future planning for the MacFarlane Park area.	Ongoing	Te Haumako Te Whitingia Strengthening Communities Together Strategy
MacFarlane Park	<p>Some logs have been placed onsite for the Nature Play Space; however, due to recent wet weather, the delivery of the remaining logs and completion of the project have been delayed.</p> <p>Staff will finish the project when the park dries out and a Hiab truck can be driven onto the grass.</p>	Ongoing	Te Haumako Te Whitingia Strengthening Communities Together Strategy
Civil Defence Emergency Management (CDEM) Community Resilience Plans - Richmond Civil Defence Plan - SHEAP - Shirley Emergency Action Plan	<p>Local staff, with the assistance of the CDEM team, are working with community organisations within the Papanui, Innes and Central wards on their Emergency Response/Community Resilience Plans that will support their communities during adverse events.</p> <p>The Richmond Civil Defence Plan has been developed and issued to the community.</p> <p>Shirley Community Trust has been working closely with CDEM to review and update the Shirley Emergency Action Plan (SHEAP).</p> <p>This collaborative effort helps ensure that the emergency plan reflects the most up-to-date information relevant to the Shirley community, including local hazards, key contacts, and available resources.</p> <p>By working together, both the Trust and CDEM are strengthening community preparedness and making sure that accurate, community-specific information is recorded in Civil</p>	Ongoing	Te Haumako Te Whitingia Strengthening Communities Together Strategy



	<p>Defence systems. This partnership also supports better communication and coordination in the event of an emergency, ensuring that residents have access to timely information and support when they need it most.</p> <p>Through these updates, Shirley Community Trust is helping to build a more resilient and connected neighbourhood.</p> <p>Staff are also working with Te Ora Hou, and St Albans Residents Association on the development of their Emergency Plans.</p>		
--	--	--	--

### 3.2 Community Funding Summary

The balance of the Board's funding pools at the time of writing is currently as follows subject to subtraction of the grants proposed through the reports to this meeting as shown:

2024/25 Waipapa Papanui-Innes-Central Discretionary Response Fund (DRF)	
<b>Approved Board Projects:</b>	
<ul style="list-style-type: none"> <li>Summer with your neighbours; Youth Recreation; Community Liaison; Youth Development Fund; Community Pride Garden Awards</li> </ul>	
<b>AVAILABLE BALANCE</b> <i>(at time of writing):</i>	<b>\$16,222</b>

2024/25 Waipapa Papanui-Innes-Central Youth Development Fund (YDF)	
<b>YDF grants approved over the last financial year:</b>	
<ul style="list-style-type: none"> <li>Grant to Disharn Noda towards travelling to Tahiti for a cultural exchange</li> </ul>	\$300
<ul style="list-style-type: none"> <li>Grants to Katia and Elena Ashmore towards the costs of attending the National Secondary Schools' Brass Band Course 2024</li> </ul>	\$300 & \$300
<ul style="list-style-type: none"> <li>Grant to Laura Powley towards participating in the Avonside Girls' High School French Trip to Angers</li> </ul>	\$500
<ul style="list-style-type: none"> <li>Grant to Olivia Zeng towards the costs of attending the Aspire (Dance) Programme at Convergence Dance Studio</li> </ul>	\$100
<ul style="list-style-type: none"> <li>Grant to Natalia Kay towards competing in the Deaf World 3v3 Basketball Championships at Gallaudet University, Washington DC</li> </ul>	\$500
<ul style="list-style-type: none"> <li>Grant to Ollie Dysart towards representing the South Island at the ITKD Taekwondo National Championships 2024 in Palmerston North</li> </ul>	\$350
<ul style="list-style-type: none"> <li>Grant to Villa Maria College for Oriana Puhiatau towards playing in the 1st XI Football Team, attending the New Zealand Secondary Schools Tournament in Blenheim</li> </ul>	\$100
<ul style="list-style-type: none"> <li>Grant to Tiana Olney towards attending the Outward-Bound Classic Course</li> </ul>	\$300
<ul style="list-style-type: none"> <li>Grant to Jorja Ashley McCaughan towards competing at the NZCAF Aerobics Nationals in Queenstown</li> </ul>	\$200

<ul style="list-style-type: none"> <li>Grant to Lauren Dyet towards travelling with the Mixx U19 Korfball Team to the National Championships in Taiwan</li> </ul>	\$500
<ul style="list-style-type: none"> <li>Grant to Badminton Canterbury Inc. applicants towards attending the NZ Junior Team Badminton Championships in Palmerston North</li> </ul>	\$260
<ul style="list-style-type: none"> <li>Elsha Brocherie towards travelling with her team to the Korfball Club Championships in Adelaide, Australia</li> </ul>	\$400
<ul style="list-style-type: none"> <li>Rhys Lewis towards competing at The World VEX Robotics Championships in Dallas, USA</li> </ul>	\$500
<ul style="list-style-type: none"> <li>Alisa Wada towards the costs of representing New Zealand at the FISU Summer World University Games 2025 for Artistic Gymnastics in Germany</li> </ul>	\$500
<ul style="list-style-type: none"> <li>Jean Taylor towards the competing as U18 representative for the Canterbury Netball Team at the Netball Tournament in Wellington</li> </ul>	\$350
<b>AVAILABLE BALANCE</b> ( <i>at time of writing</i> ):	<b>\$2,540</b>

### 3.3 Summary of Recent YDF Applications

Each year, the Council's community boards set aside an amount of money to fund young people in their local community through their Youth Development Fund (YDF). For more information, [see here](#). Above is a list of YDF grants over the last financial year, and below is a summary of the background to the YDF recipients over the last month.

- Jean Taylor** is a 17-year-old student at Marian College. She plays senior netball for the Marian College school team and also umpires when required.

Her school netball team trains three to four days per week after school and at weekends. In addition, Jean has also qualified for the Canterbury Under 18 netball team, which is competing in the national tournament being held in Wellington on Sunday, 22nd June 2025.

There has been minimal time between notification and the actual tournament to fundraise, so Jean and her family are grateful for help with the costs of travel and uniforms.

### 3.4 Strengthening Communities Fund

This fund supports community-focused organisations whose projects contribute to the strengthening of community wellbeing in the Christchurch City and Banks Peninsula area. 22 applications to the Board's [Strengthening Communities Fund](#) (SCF) were received this year, and are being processed for consideration next month.

Outside of the yearly SCF cycle, community groups with emergency or unforeseen situations can apply to the Board's [Discretionary Response Fund](#) (DRF). The DRF supports community-focused projects that contribute to the strengthening of community wellbeing in the Christchurch city area.

### 3.5 The Mayor's Welfare Fund

The Mayor's Welfare Fund provides financial support to families and individuals in the community who are in extreme financial distress. It is a last resource for when people have exhausted other appropriate sources such as Work and Income New Zealand (WINZ). The criteria and instructions on how to apply can be found here: [Mayors Welfare Fund - all you need to know](#).



3.6 **Upcoming Community Events and Activities**

**Volunteer Events**

- National Volunteer Week 2025 was held 15–22 June, celebrating our local legends – Ngā mihi nui  
Thank you for making a difference.
- Visit this link for a variety of volunteer events held around the city, and this link to volunteer at a Council-produced event. There is also information at this link on becoming a Graffiti Programme volunteer, or register at this link to join the Parks Volunteers Team.
- Some planting events are eligible for Children's University (CU) credits, and are family-friendly. Schools can be supported by the 'connect and grow' planting programme: Manaaki Taiao – Nurture Nature.
- Or find other opportunities to volunteer in your community at this link, whether it be sharing your passion for art at the Art Gallery, helping the Friends of the Library, joining the Friends of the Botanic Gardens, volunteering to help run the Peace Train, or any of the number of volunteer opportunities listed on the site for [Volunteering Canterbury](#).



**FRESH Events 2025**

- Information on events from Youth & Cultural Development (YCD) is available at [this link](#).

**Other upcoming community events and festivals in the city**

- Visit [this link](#) for a variety of community events and festivals held around the city. You can also visit the [What's On](#) site for one-off and regular events like:
  - [Winter Wonderland trail at the Gardens](#) – 28 June to 13 July at Christchurch Botanic Gardens - Explore Alice in Wonderland inspired activities and games at the Christchurch Botanic Gardens these school holidays. Pick up your free trail map from the Botanic Gardens Visitor Centre or the Kiosk. Can you find Alice along the trail? Tell us her message and enter a prize draw!
  - [Imagination Station Holiday Brick School](#) – 7-11 July, 9.30 am to 3.30 pm at Tūranga - Drop off your children for a whole day of LEGO fun with our experienced team! There will be a variety of activities, play, and LEGO challenges to enjoy! This is a day programme for primary school-aged children (recommended age 6 to 10). Visit link for pricing and to book.



- [Tuia atu, tuia mai | tukutuku](#) – 10 July, 10-11.30am and 1-2.30pm at Tūranga - Join Māori Library Services to learn about design. Take some time to learn, and then make to take home Māori decorative panels using contemporary materials. Recommended for 7+ years. Under 7 years must be accompanied by an adult.

- [CSO and Rova Present: Matariki](#) – 10 July, 10-11am and 11.30am to 12.30pm at Christchurch Town

Hall - Celebrate Matariki with Christchurch Symphony Orchestra in this magical concert designed especially for tamariki.

- [Heritage stargazing at the Observatory Tower](#) – 10 & 17 July, 7-9pm at The Arts Centre Te Matatiki Toi Ora - View the Southern Sky through the Victorian-era Townsend Teece Telescope, under the guidance of Townsend astronomers from the University of Canterbury.



- [Insect Inspectors: Bugs of Aotearoa](#) – 12 July, 10am to 1pm at The Kiosk, Botanic Gardens - Explore the amazing colours of NZ insects! Join the Canterbury branch of the National Entomology Society for a vibrant, bug-filled adventure celebrating Aotearoa's incredible insect life! Discover dazzling patterns and camouflage secrets of native bugs.

- [Tamariki Book Festival](#) – 13 July, 11am to 4pm at

Tūranga - This year's Tamariki Book Festival theme is Books Take Flight. Join for a great day of book and flight-related activities. Meet local authors and illustrators in a fun festival atmosphere. Find your next favourite author. Buy books for ages 3 to 17, direct from the creators.

- [Christchurch Conversations: Steps to a walkable Ōtautahi](#) – 15 July, 6-7.30pm at TSB Space, Tūranga - This Christchurch Conversation considers how a truly walkable city could make for a vibrant, sustainable and liveable Christchurch. First, there'll be some quick-fire presentations, then moving to a panel discussion and Q&A before closing the event with some walking-inspired words from a poet.



- [Careers in Heritage 2025](#) – 4 August, 3.30-5.30pm at Tūranga - This event for senior high school and university students will introduce you to some of the many possible careers in arts and heritage.

- [Go Green Expo](#) – 9-10 August, 10am to 4pm at Wolfbrook Arena - New Zealand's largest sustainable lifestyle show. This is your one-stop shop for everything you need to live a sustainable life.



### KidsFest

- From 28 June to 13 July 2025 entertain and educate our tamariki. With hundreds of events on offer, don't miss it. [Information on hosting a KidsFest event can be found here.](#)



### Christchurch City Council Libraries Events

- Christchurch City Libraries run a wide range of classes and programmes both in libraries and through its learning centres for everyone from babies to seniors, with information at [this link](#).



- The Libraries' [technology programmes](#) are designed to help people become more comfortable with technology and to make better use of available computer tools. Better Digital Futures Computer Programmes for ages 65+ is a free programme (though it does require bookings). There is also technology help drop-in sessions, and a GenConnect Drop-in to help with questions about your iPad, Smart Phone or Tablet, and how to use Skype, Facebook, or share your photos with family or friends.
- [JP Clinics](#) - Justices of the Peace are available at set times at a number of Christchurch City libraries. JPs can witness signatures, verify copies of documents, hear oaths, declarations and more. There is no charge for JP services.
- The Libraries' Events Calendar can be found [here](#), and there are dedicated pages for significant events and related topics like:
  - [Wikin te Taetae ni Kiribati - Kiribati Language Week](#)  
Kam na bane ni mauri. Wikin te Taetae ni Kiribati - Kiribati Language Week is on from Sunday 6 to Saturday 12 July 2025.
  - [Cook Islands Māori Language Week](#)  
Kia orana! 'Epetoma o te reo Māori Kūki 'Āirani - Cook Islands Māori Language week is on from Sunday 3 to Saturday 9 August 2025.



3.7 Participation in and Contribution to Decision Making

3.7.1 Report back on other Activities contributing to Community Board Plan



***Papanui Bush Community Planting Day***

The postponement of the community planting day at Papanui Bush to 14 June, resulted in securing some great planting weather for the volunteers who turned out in force to help with the continuing transformation of the reserve into a burgeoning bush, with the support Denis McMurtie, the Rotary Club of Papanui, and members of the Council's community parks and governance teams.



- ***Matariki in the Zone***

Staff attended the Matariki in the Zone event on Saturday 21 June.

Hosted by Richmond Community Garden, Avebury House, and Avon-Ōtākaro Network the event celebrated Matariki with food, music, activities, and a week-long trail lighting display.

Live performances included the CCC Roopu Waiata Group, Pareawa Banks Ave Choir, Shirley Community All Ages Kapa Haka, Te Roopu Tuhono / White Room, Lisa Tui, and a Fire spinning finale.

The event had over 2,000 people in attendance with free events and kai available for all which included a boil-up, soup and fried bread by Richmond Community Garden; mulled wine and hot chocolate by Avebury House and Richmond Club; and Riverlution Café treats. Over 500 people enjoyed the hangi, with queues all the way down Vogel Street.







Activities included storytelling and planting with Christchurch City Libraries and Red Zone teams plus seed bomb throwing, weaving, carving, marshmallow pit, treasure hunts, and more – all showcasing local creativity and care for the whenua. The event was completed with the raising of the hangi cooked by Tuahiwi Marae.



- ***Te Oraka Community Pools***

A working bee to demolish the old fence to make room for a new modern pool fence was held on 15 June. It was reported to be a chilly start but a beautiful day with the pools emerging from behind the old, corrugated iron, thanks to the volunteers on the day.



- ***Mairehau Library's volunteer thank you morning tea***

Staff attended the Mairehau Library's volunteer thank you morning tea, a special occasion celebrating 64 years of volunteer service to the community.

A highlight of the event was recognising the incredible dedication of one volunteer who has been serving at the library since 1974—a remarkable milestone and testament to the spirit of community contribution.



- Shirley Community Trust Thankfulness Lunch



Shirley Community Trust noted what a great occasion their Thankfulness Lunch for their volunteers was, sharing kai and korero about all the good things happening in Shirley.

- Volunteering Canterbury – Volunteer Recognition Awards 2025

Volunteers at Packe Street Park and Community Garden, Delta Trust, Imagination Station, We Are Richmond, and Shirley Community Trust were among those deservingly celebrated at the Volunteer Recognition Awards held at the Salvation Army Centre on Colombo Street during National Volunteer Week.





- ***Gear Up Ōtautahi***

Gear Up Ōtautahi continues to support Canterbury communities by providing quality second-hand sports gear to local organisations. Most recently, Hoa Motuhake Sports Trust received a generous donation of gear that will be incredibly beneficial for tamariki participating in their programmes.



This support not only helps reduce financial barriers but also encourages greater participation in physical activity and team sports. It's another great example of how sharing resources can strengthen community connections and opportunities for our young people.

In collaboration with Eastern Community Sport and Recreation Inc, Gear Up Ōtautahi was able to provide enough equipment to introduce Shirley Intermediate students to badminton at the Avon

Hub gym!

This exciting opportunity gave tamariki the chance to try out a new sport in a fun and supportive environment, promoting physical activity and skill development. We're grateful to our partners for helping make this possible and look forward to seeing more young people enjoying badminton in the community.

- ***Phillipstown Hub Matariki event***

Staff attended the Matariki event held at Phillipstown Hub on Friday 20 June.

The event was highlighted by a number of organisations joining together to support the local community celebrate Matariki.

Activities such as braiding, face painting, children's activities, Mirimiri and Romiromi massage, plus stalls and activities provided the opportunity for the community to be involved.







Entertainment included Tradition Arabic and Persian music, the Maea Ukulele group and Kapa Haka.

A large crowd attended and enjoyed the event and the free sausage sizzle and Hangi.



### ***Parks Update***

The Community Partnership Rangers continue their collaborative work with the community around the greenspaces in the Board area:

Essex Reserve – A working bee with Salisbury House and community member, Gerard Murnane, went ahead on 30 May. Two members from Phillipstown Hub came along too and brought some gear to help with a great maintenance and weeding session. Unfortunately a further working bee with Step Ahead Trust the following week didn't go ahead due to the weather, but the Community Partnership Ranger and Gerard met up and planted the plants in the spaces they'd made for them the previous week.





Packe Reserve Community Garden – The Community Partnership Ranger got some concrete bags to help contribute to the project to repair the mosaic path in the park.

Multicultural Recreation and Community Centre – The Ranger dropped plants off to the MRCC on 6 June and they were planted that day by Gerard Murnane and volunteers. The Ranger subsequently also dropped off a few trays of bedding flowering plants, which have been planted these around the carpark. Gerard does a lot of volunteer work here and arranged this planting.

Edgar Macintosh Park – On 26 June there was a Parks Unit staff planting in the park. The Community Partnership Ranger noting that it was nice to all get together and add some more plants into the park, which is part of the Asset Renewal Process.

Oliviers Reserve – The working bee in Oliviers Reserve on 27 June was cancelled due to the rain but the Community Partnerships Ranger will be dropping bedding plants off to Gerard Murnane which will get planted in Welcome Rest and Oliviers Reserve at another time.



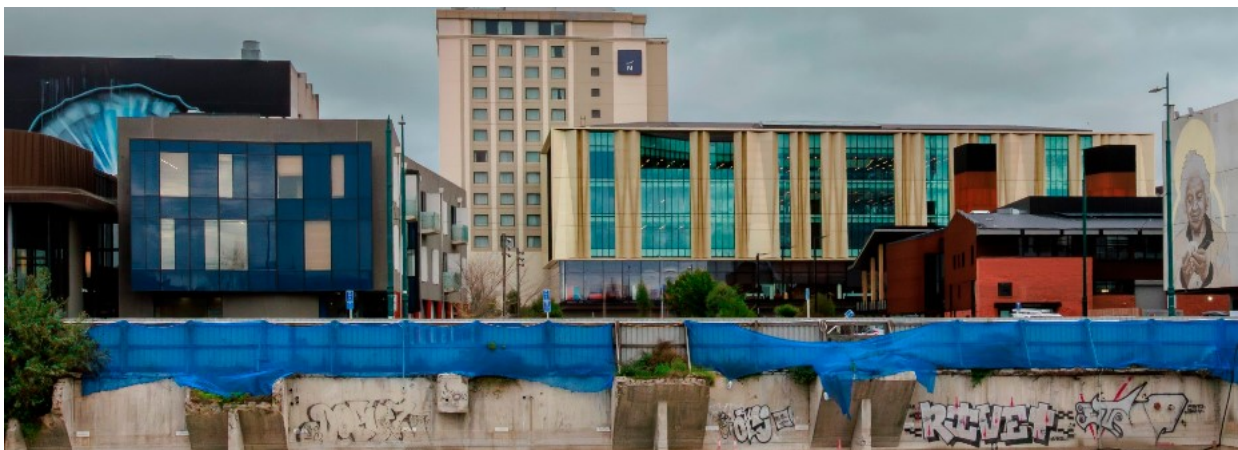
### 3.7.2 Council Engagement and Consultation

#### [Development contributions rebate schemes](#) (closes 14 July 2025)

The Council is proposing two rebate schemes to waive development contributions in specific circumstances, where there is a clear benefit to the wider community. These are:

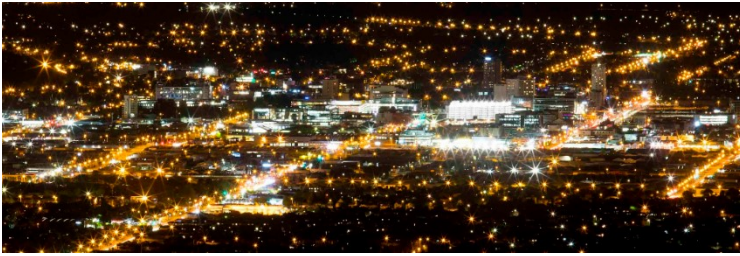
- Scheme 1: Existing demand credits in the central city
- Scheme 2: Six-story residential development in the central city

These schemes would sit alongside Council's Development Contributions Policy, which is used to help recover some of the costs of providing infrastructure to new developments. They are guided by the [Development Contributions Rebate Policy](#).



- [Plan Change 21 - Central City Noise](#) (closes 27 July 2025)

The Council is proposing to change the District Plan's rules about noise in the central city, particularly when it comes to live music and entertainment activities. They're seeking early feedback on the proposal so the potential environmental, economic, social and cultural impacts can be weighed up before notifying the plan change for submissions later this year.



- [Speed limits surrounding One New Zealand Stadium at Te Kaha](#) (closes 9 July 2025)

Due to a change in government legislation, the Council need to re-consult on previously approved speed reductions around Ōtautahi's new stadium.



- [Tree Planting Plans](#)

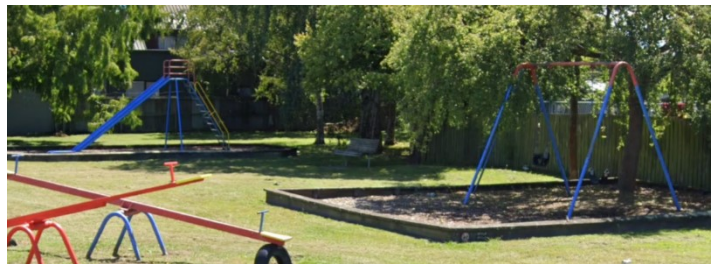
Help the shape the tree planting plans for parks across Ōtautahi Christchurch.

- [Play Space Projects](#)

The Council is constantly replacing, upgrading, and creating new play spaces for people of all ages. Find out more here.

- [Momorangi Reserve Play Space Renewal](#) (closes 6 July 2025)

The playground gear has had an awesome run, but it's time for something fresh! To keep the fun going safely, modern play equipment is being brought in that's just as exciting—so you can keep climbing, exploring, and laughing for years to come.



- [Consultations in other parts of the district:](#)
  - [Whakatā Templeton Cemetery](#) (closes 7 July 2025)
  - [Wyon and Hulbert Street renewal](#) (closes 21 July 2025)

### 3.8 Governance Advice

#### 3.8.1 Customer Service Request (CSR) Report for the Papanui-Innes-Central Wards

- Refer to **Attachment A** for the 1 to 30 June 2025 statistics, providing an overview of the number of CSRs that have been received, including the types of requests being received and a breakdown of how they are being reported.
- [Snap Send Solve](#) is the smartphone app the Council offers to help make reporting issues easy, and it is still possible to [report issues online](#), by calling Council on 03 941 8999 or visiting one of the Council's [Service centres](#).

#### 3.8.2 Community Profiles

- Each year, the Council's Community Support and Partnerships Unit produces community profiles of each of the 16 wards across the city.



- These profiles are a snapshot of the ward regarding the community infrastructure and include the updated Census statistics and Deprivation Index information.
- The profiles are now aligned with the Council's Strengthening Communities Together Strategy and provide information regarding activities/groups/facilities in each ward that help meet the goals of each Pillar in the Strategy.
- To view the profiles for the Papanui-Innes-Central Wards, please use the links below.



[Papanui](#)



[Innes](#)



[Central](#)

### 3.8.1 Climate action



- The Board's vision statement reflects its commitment to supporting the Ōtautahi Christchurch Climate Resilience Strategy's climate goals and the Ōtautahi-Christchurch Urban Forest Plan.
- A key resource for understanding the Council's targets, what it's doing, how emissions are tracking, and finding relevant community events and activities, is the Council's Climate Action webpage.
- We've got greenhouse gas emission reduction targets to aim for. [Find out here](#) where our emissions come from and how we're tracking them within the Council and across the Christchurch district.
- We need everyone to play their part to reach our targets. These online tools can help you measure and reduce your household or business greenhouse gas emissions:
- [Future Fit household emissions calculator](#)
- [Sustainable Business Network Climate Action Toolbox](#)

Whether you are going to work or school, choose ways that are better for you and our environment. For more information, visit [getting to work](#) or [getting to school](#).

- We also recognise that our tamariki and rangatahi are the leaders of tomorrow. The [Learning Through Action programme](#) encourages students to get creative and find innovative ideas for meaningful climate action.

#### ***Prepare for the impacts of climate change***

- We're already feeling the effects of a changing climate in the form of wetter winters, and hotter, drier and longer summers. [Find out more here](#), and browse the [Christchurch District Risk Screening Report \(2022\)](#), which identifies how climate change will affect our natural and built environments. The document is based on the latest scientific information and input from key agencies in the region.

**Get updates on climate action**

- [Sign up](#) for the Council's newsletter and get the latest news and information delivered to your inbox.

**3.8.2 Community Patrols**



The [Community Patrols of New Zealand website](#) hosts a wealth of information relevant to what they do in helping to build safer communities, becoming a patroller, and setting up a patrol. Patrols in the Board area include the Christchurch North and City Park community patrols. Their [statistical information](#) can be found on the website.

**3.8.3 Planned road works and closures**

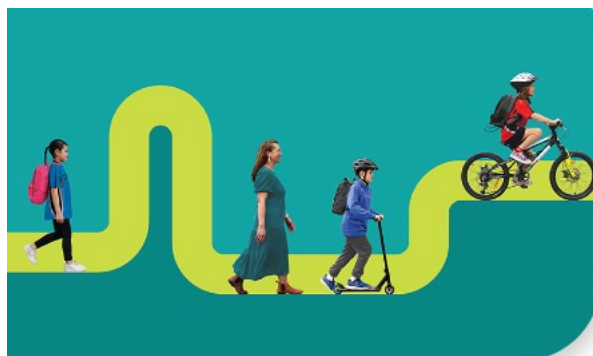
Planned road works and closures are indicated on the map at the [Traffic Updates page at this link](#). Additionally, a Smartview of nearby road works and closures is available at the following link: <https://smartview.ccc.govt.nz/travel/roads>.

There is also a project page for the work in Bishopdale and Papanui at [this site](#).

**3.8.4 Public Notices**

**3.8.5 School travel**

- The Council offers a wealth of resources [at this link](#) relevant to how together we can make it way safer and easier for more children to walk, bike and scooter to school.
- [Good-to-go ways to get to school](#) is an exciting programme designed to support schools in encouraging safe, active, fun, affordable, low-emission ways to travel to and from school.



**3.8.6 Travel Planning**

The Council also offers free city travel planning to help organisations, businesses and staff get to know their travel options, with personalised journey planning sessions, advice, practical resources, and services such as Metro incentives for taking the bus, and onsite bike workshops. Information is available [at this link](#), which notes that over 50 workplaces have been supported since 2016, assisting thousands of staff across the city.

**3.8.7 SmartView**

The Council's [SmartView page](#) gives users access to a range of real-time information about the city, including data on how to find local mountain bike tracks and also check that they are open, the number of spaces available in car park buildings, the nearest bus stop and the time of the next arrival, air quality, how to get to places, events, where to see street art, weather updates and the latest airport arrivals and departures. Advice Provided to the Community Board Ngā Kupu Tohutohu ka hoatu ki te Poari Hapori.



## 4. Advice Provided to the Community Board Ngā Kupu Tohutohu ka hoatu ki te Poari Hapori

### 4.1 Start Work Notices (SWN)

SWN relating to the Board area are separately circulated to the Board. SWN are for works being carried out by the Council can be found at [this link](#). The [traffic updates page](#) is a more comprehensive map of planned road works and closures as other agencies also carry out work on the roads. Recent SWN relating to the Board area are:

- Oxley Avenue – water submain renewal (*circulated 30 June 2025*)
- Grassmere Street - water supply mains renewals (*circulated 25 June 2025*)
- Grassmere Street – watermain renewals (*circulated 23 June 2025*)
- Antigua Street cycle connection and watermain works - road and lane closures (Nightworks) (*circulated 16 June 2025*)
- Madras Street - brick barrel emergency repairs (*circulated 13 June 2025*)
- Carrick Street – wastewater renewal (*update circulated 9 June 2025*)

### 4.2 Graffiti Snapshot



The Graffiti Snapshot for May 2025 can be found as **Attachment B** to this report. The Council also provides information on graffiti, including tips to prevent it, and about becoming a Graffiti Programme volunteer, at [this link](#).

### 4.3 Memoranda

Memoranda related to matters of relevance to the Board have been separately circulated for the Board's information and are listed below.

- CCC: Means of supporting Edgware Village's identity (*circulated 25 June 2025*)
- CCC: Delegations Register - Plan A Map Boundary (*circulated 16 June 2025*)
- CCC: PC21 Central City Noise Plan Change - Further information on options and clarifications following Information Session to Council (*circulated 16 June 2025*)
- CCC: Memo - Regency Reserve, Norrie Park and Momorangi Reserve play space renewals - project update (*circulated 11 June 2025*)

## Attachments Ngā Tāpirihanga

No.	Title	Reference	Page
A 	Customer Service Request Report - June 2025	25/1301118	65
B 	Graffiti Snapshot - May 2025	25/1209272	66

Signatories Ngā Kaiwaitohu

<b>Authors</b>	Mark Saunders - Community Board Advisor Lyssa Aves - Support Officer Trevor Cattermole - Community Development Advisor Stacey Holbrough - Community Development Advisor Jason Chee - Community Recreation Advisor Hannah Martin - Community Support & Events Coordinator Emma Pavey - Manager Community Governance, Papanui-Innes-Central
<b>Approved By</b>	Emma Pavey - Manager Community Governance, Papanui-Innes-Central Matthew McLintock - Manager Community Governance Team Matt Boulton - Acting Head of Community Support & Partnerships



Ticket Report

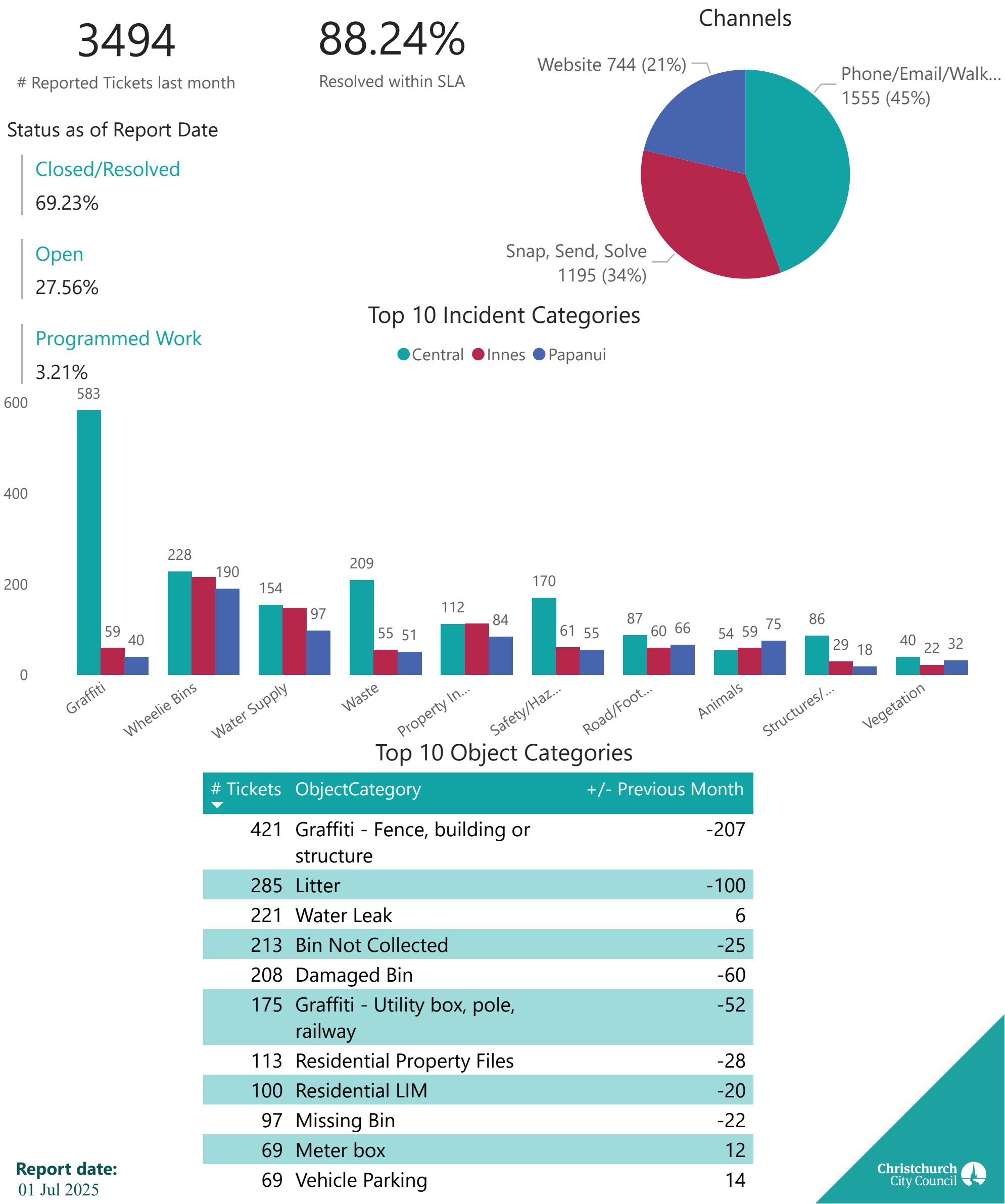
01 06 2025 - 28 06 2025

Filter by Ward

Papanui-Innes-Central

Filter by month

2025 (Year) + June (Month)



# GRAFFITI SNAPSHOT

May 2025

## Ward and Suburb Insights



### Ward Reporting

These statistics exclude non-CCC utility cabinets and include graffiti incidents that may have been reported more than once

% of Reports made by  
Volunteers



### Ward Removal

Graffiti removed

Ward	May 2025	April 2025	% Monthly Change
Central	896	675	33%
Heathcote	191	180	6%
Coastal	135	144	-6%
Spreydon	100	65	54%
Burwood	81	22	268%
Linwood	79	71	11%
Innes	69	57	21%
Papanui	59	28	111%
Riccarton	55	54	2%
Hornby	44	24	83%
Cashmere	38	26	46%
Banks Peninsula	31	12	158%
Fendalton	24	56	-57%
Halswell	22	50	-56%
Harewood	18	25	-28%
Waimairi	10	19	-47%
Unknown	2	3	-33%
<b>Total</b>	<b>1854</b>	<b>1511</b>	<b>0.23</b>

### Reporting Hot Spots

Streets/Locations with the most reported graffiti  
(Excluding non- CCC Utility cabinets)

Suburb	Reports made - May 2025	Reports made - April 2025
Central City	706	484
Sydenham	105	105
Addington	95	40
New Brighton	92	91
Linwood	80	83
St Albans	57	52
Waltham	47	59
Richmond	46	22
Papanui	45	18
Phillipstown	45	54
Woolston	40	30
Riccarton	33	27
Lyttelton	30	12
Shirley	30	6
Burwood	26	10
Hornby	24	21
South New Brighton	18	20
North Linwood	17	7
Spreydon	17	9
Avonside	16	10
Travis	16	5

Ward	Graffiti cleaned mtrs2 May 2025	Graffiti cleaned mtrs2 April 2025
Central	1755	1235
Heathcote	735	445
Coastal	409	396
Spreydon	253	56
Burwood	244	60
Innes	242	102
Papanui	180	21
Linwood	134	146
Riccarton	126	71
Hornby	151	25
Harewood	83	196
Cashmere	49	21
Banks Peninsula	46	28
Halswell	221	26
Fendalton	17	54
Waimairi	7	16
Unknown	4	0
<b>Total</b>	<b>4454</b>	<b>2895</b>

### Removal Hot Spots

Locations with the most graffiti removed (m2)

Street	Cleaned graffiti m2
Washington Way Reserve	220
Validation Park	173
Pilgrim Place	138
Sabina Street, Hope to Hercules	110
Worcester Street	81
Waltham Road, Wordsworth to Mowbray	77
South New Brighton Park	63
Brighton Mall	62
Gloucester Street, Avonside to Locksley	60
Gloucester Street	59
Thomson Park	59
Tuam Street, Mata to Manchester	57
Hereford Street, Huanui to Latimer	55
Main North Road	55
Tramway Lane \ Worcester Street, Central City	54
Paddington Street, Camden to Ealing	54
Bath Street, Durham to Colombo	50
Cathedral Square, Worcester to Colombo	49
St Asaph Street	44
Tuam Street	42
Travis Wetland	42
Allen Street \ Madras Street, Central City	41
Pages Road	37
Blenheim Road \ Pope Street, Addington	36
Allen Street, Manchester to Madras	36
Colombo Street	36

# GRAFFITI SNAPSHOT

May 2025

## Further Insights

### Snap Send Solve Insights

	May	April	% Change
Orion	378	354	7%
Chorus	122	56	118%
Enable	70	56	25%
One NZ	27	33	-18%
Spark	16	13	23%
NZ Post	5	1	400%
Rockgas	4	5	-20%
2 Degrees	2	8	-75%
Kiwi Rail	6	8	-25%
NZTA	11	11	0%

These are the reports that have been sent directly to the utility owner from Graffiti Programme volunteers and members of the public

### Monthly Draw Winner:



A huge thank you to you all for jumping on board and using the correct categories for logging utility/pole tickets – *You are all amazing*

### Latest artwork



'Connected Environment'  
One NZ cabinet painted by Hillmorton High School students  
1 McCarthy St, Hoon Hay

12. Elected Members’ Information Exchange Te Whakawhiti Whakaaro  
o Te Kāhui Amorangi

This item provides an opportunity for Board Members to update each other on recent events and/or issues of relevance and interest to the Board.

Karakia Whakamutunga

Unuhia, unuhia Unuhia ki te uru tapu nui Kia wātea, kia māmā, te ngākau, Te tinana te wairua i te ara takatā Koia rā e Rongo, whakairia ake ki runga Kia tina! TINA! Hui e! TĀIKI E!	<i>Draw on, draw on, Draw on the supreme sacredness To clear, to free the heart, the body and the spirit of mankind Rongo, suspended high above us (i.e. in ‘heaven’) Draw together! Affirm!</i>
---	--

Actions Register Ngā Mahinga

When decisions are made at meetings, these are assigned to staff as **actions** to implement. The following lists detail any actions from this meeting that were:

- Open at the time the agenda was generated.
- Closed since the last ordinary meeting.

Open Actions Ngā Mahinga Tuwhera

REPORT TITLE/AGENDA SECTION	MEETING DATE	ACTION DUE DATE	UNIT	TEAM
Dunedin Reserve- Change part of the reserve classification to Local Purpose (Community) Reserve	15 May 2025	14 August 2025	Facilities & Property Unit	Property Consultancy
Public Forum - Papanui Baptist Church	13 February 2025	30 August 2025	Parks	Botanic and Garden Parks
Public Forum - Linda Ellwood	15 August 2024	31 August 2025	Parks	Parks & Recreation Planning
Notice of Motion - Courtenay Street	12 June 2025	11 September 2025	Transport & Waste	Project Management
Sutton House - Lease to The Sutton Heritage House and Garden Charitable Trust	12 June 2025	11 September 2025	Facilities & Property Unit	Property Consultancy
Tree Planting Plan for Petrie Park	12 June 2025	11 September 2025	Parks	Botanic and Garden Parks
Shirley Community Reserve: Proposed Community Facility	13 June 2024	31 December 2025	Parks	Parks & Recreation Planning

Actions Closed Since the Last Meeting Ngā Mahinga kua Tutuki nō Tērā Hui

REPORT TITLE/AGENDA SECTION	MEETING DATE	DUE DATE	ACTION CLOSURE DATE	UNIT	TEAM
Correspondence	09-May-2024	31-Oct-2025	17-Jun-2025	Transport & Waste	Traffic Operations
Grant an Easement for Fibre Installation, Dunedin Reserve, Redwood	13-Mar-2025	12-Jun-2025	06-Jun-2025	Facilities & Property Unit	Property Consultancy
Bishop Street - Proposed P120 Parking Restrictions	10-Apr-2025	10-Jul-2025	06-Jun-2025	Planning & Consents	Transport
Cross Reserve - play space renewal concept plan	12-Jun-2025	11-Sep-2025	18-Jun-2025	Parks	Community Parks
Waipapa Papanui-Innes-Central Community Board 2024-25 Discretionary Response Fund Application - Mairehau Library Incorporated	12-Jun-2025	11-Sep-2025	30-Jun-2025	Community Support & Partnerships	Governance (Pap-Inn-Cen)