

**Waitai Coastal-Burwood-Linwood Community Board  
Information Session/Workshop  
MINUTES ATTACHMENTS**

---

**Date:** Monday 9 June 2025  
**Time:** 3.02 pm  
**Venue:** Boardroom, Corner Beresford and Union Streets,  
New Brighton

---

<b>TABLE OF CONTENTS NGĀ IHIRANGI</b>	<b>PAGE</b>
<b>2. Options for North Beach Car Park</b>	
A. North Beach NOM Options Presentation.....	3
<b>3. Project updates: QEII Park Development and Parklands Reserve (helicopter play module renewal)</b>	
A. QEII and Parklands Update Presentation.....	20

---



# North Beach Carpark

*Staff response to Notice of Motion regarding  
North Beach Parking Restrictions*

9 June 2025

## Notice of Motion - North Beach carpark

---

- Investigate parking restrictions at North Beach Car Park
  - to improve accessibility, safety, and availability of short-term parking
  - time-limited and permit parking, and mobility parks
  - demand on parking due to multiple community facilities and surrounding amenities
- Undertake a comprehensive parking and safety assessment

## Steps to respond to the NOM for North Beach carpark

---

- Parking and safety assessment – provided in memo to the Board on 23 May
- Discuss with the Board about possible options
  - Minor safety improvements
  - Redesign of the car park (requires LTP bid)
- If the Board wants staff to progress any options:
  - Public consultation
  - Report back to the Board for a decision
  - Implementation

## Other work underway

---

- The Council has other projects underway in the vicinity of North Beach Car Park
  - Marine Parade (Hawke St to Bowhill Rd) Street Renewal Project
  - Eastern Orbital Cycle Route (Bowhill Rd)
- North Beach Surf Lifesaving Club
  - Proposal to rebuild club facilities and renew the licence
  - Public consultation has now closed
  - Report back to the Board following submissions analysis

---

See Section 6, North Beach Parking Restrictions Memo

## North Beach Carpark



## Facilities at North Beach Carpark

- North New Brighton War Memorial Hall and Community Centre
- North Beach Surf Lifesaving Club
- Public toilets and an outdoor shower
- Coffee Cart
- A park and access to the beach



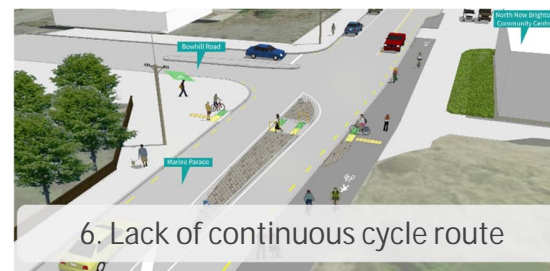
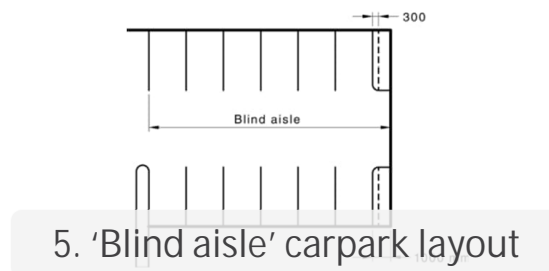
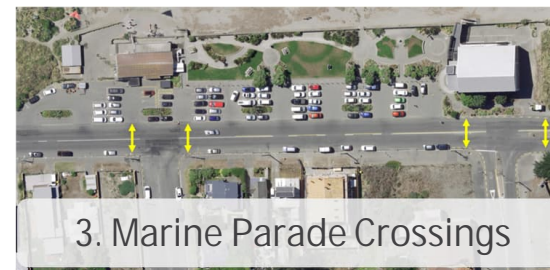
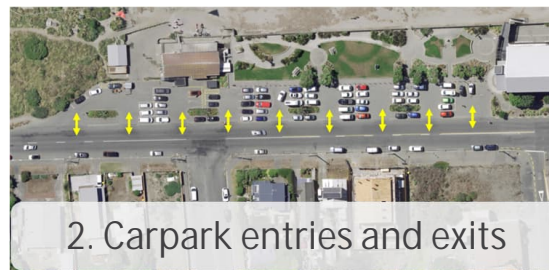
See Section 3, North Beach Parking Restrictions Memo

## Users of North Beach Car Park

---

- Surf club
- Beach-goers
- Locals
- Visitors to the area
- People going to events at the community centre
- Freedom campers

# Parking and safety assessment



See Section 3, North Beach Parking Restrictions Memo & Attachment A

## Options

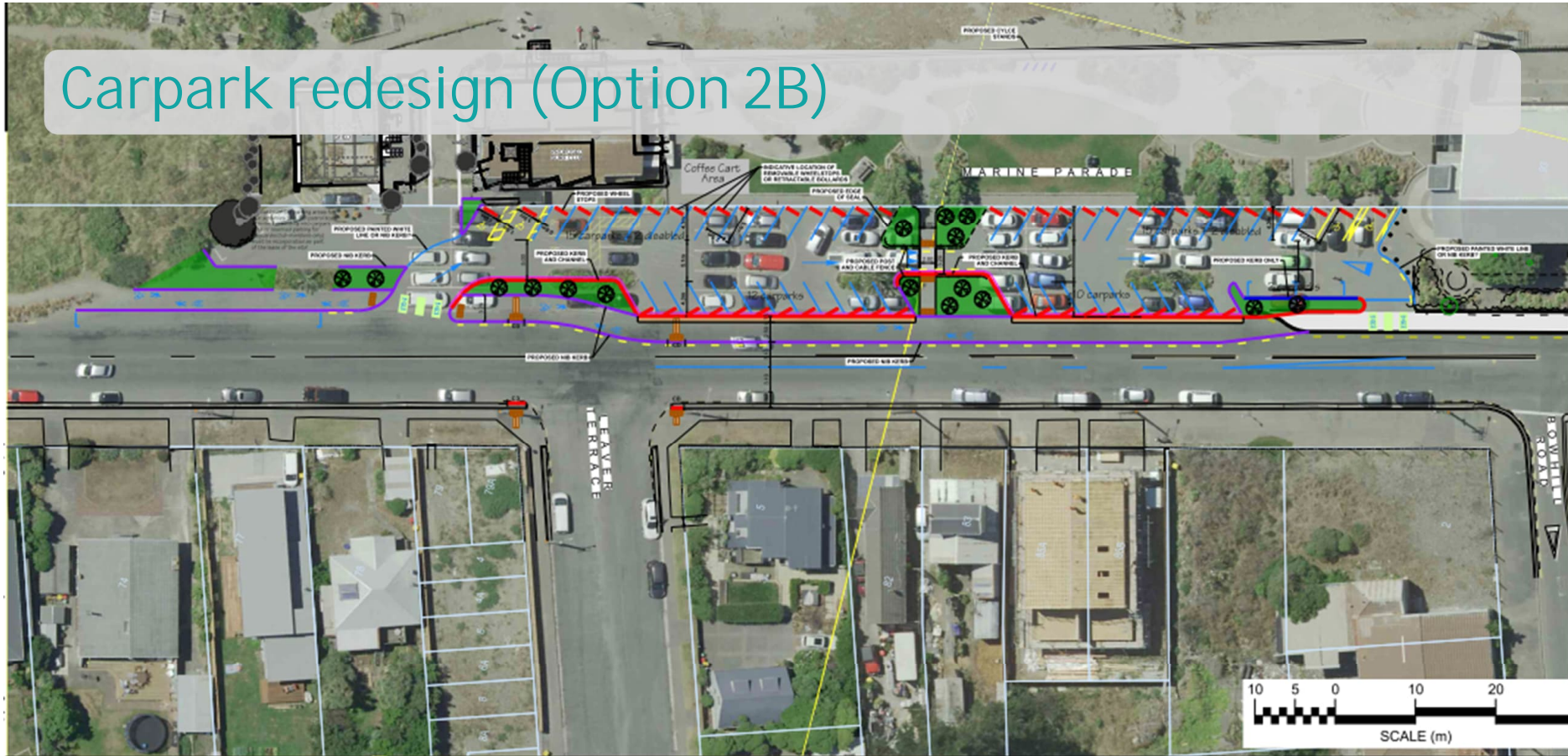
---

- The options that will best address the issues at North Beach Car Park range from minor safety improvements through to a full redesign of the car park
- The memo to the Board provided some detail about what aspects could be included for these options
  - A starting point for discussion with the Board
  - Detail on what types of changes could be made to the car park
  - A draft plan to help visual what the carpark could look like with any of those changes





# Carpark redesign (Option 2B)



**North Beach Carpark - Marine Parade**  
Carpark redesign with entrance close to Leaver Terrace  
Draft - To be discussed with Community Board

Original Plan Size: A  
Drawn: VMI Issue 1 20/05/20  
Designed: NR Drawing: TG1501  
Approved: ... Project:

Option 2B

## Funding options

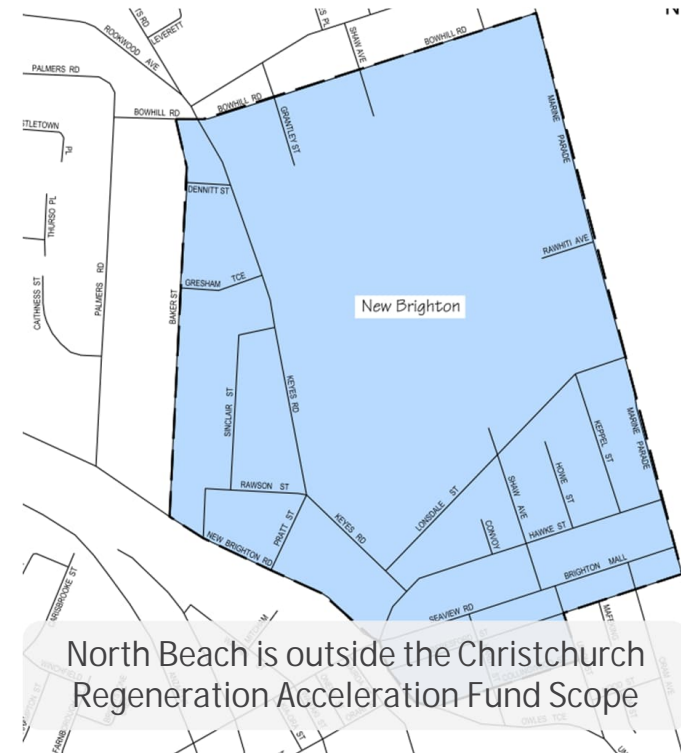
Minor improvements (Option 1)

- Funding available: Transport Unit

Major improvements (Option 2A/2B)

- Funding not currently available: Line item in Long Term Plan

Note: CRAF funding not available as outside the area scope of CRAF (defined by Govt)



## Car parking spaces

	Total	Off-street			On-street
		Standard carparks	Mobility carparks	P5 drop off	Standard carpark
Existing	62	42	4	1	15
Current proposal: <u>North Beach Surf Lifesaving Club rebuild and new lease</u>	56	36	4	1	15
Option 1: Minor Safety Improvements	59	40	6	1	12
Option 2A: Carpark redesign with entrance at northern end	67	59	4	0	4
Option 2B: Carpark redesign with entrance near Leaver Tce	62	54	4	0	4

## Surf club response to design options

---

- Feedback on options:
  - *Option 1 – I don't feel will increase the safety much at all, as a frequent user of the car park it's hard to see out onto Marine parade when people park on the road side and you have to nose out to be able to see the traffic.*
  - *For us Option 2B is the plan that helps with - accessibility for emergency vehicles to the surf club, gives a clear area for loading of IRBS for emergency call outs, space for gear trailers for surf lifesaving events and that won't impede on the public accessing the car park.*
- *Timing for Club rebuild subject to the following - ECAN approval, Building consent & Funding. May be sooner if can secure funding*
  - *Stage 1 – Surf Club Shed and Patrol Tower (North Building) – 2026-2027*
  - *Stage 2 – Surf Club Building ( South Building) - 2028-2029*

## Locations covered by Notice of Motion

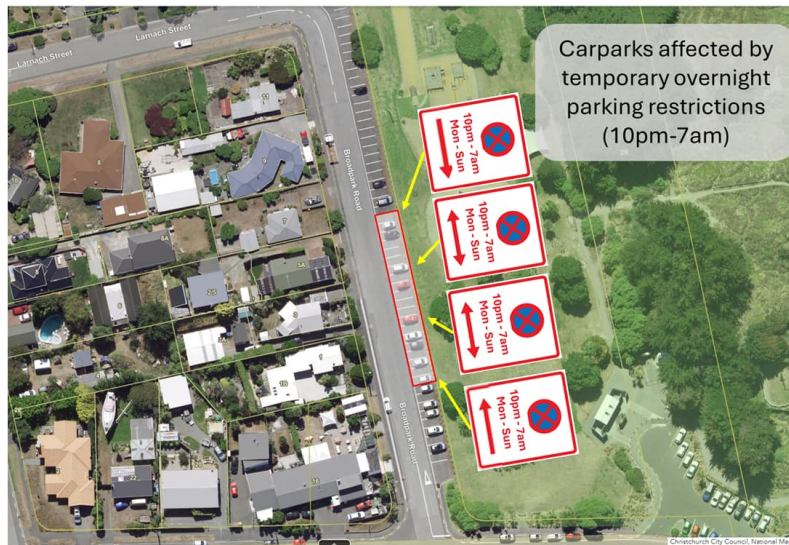
- North Beach Car Park,
- Marine Parade near the North Beach Car Park,
- Bowhill Road (from the North Beach Beer Garden to Marine Parade),
- Leaver Terrace (from Tonks Street to Marine Parade),
- Tonks Street (from Leaver Terrace to Bowhill Road) and
- Broadpark Road



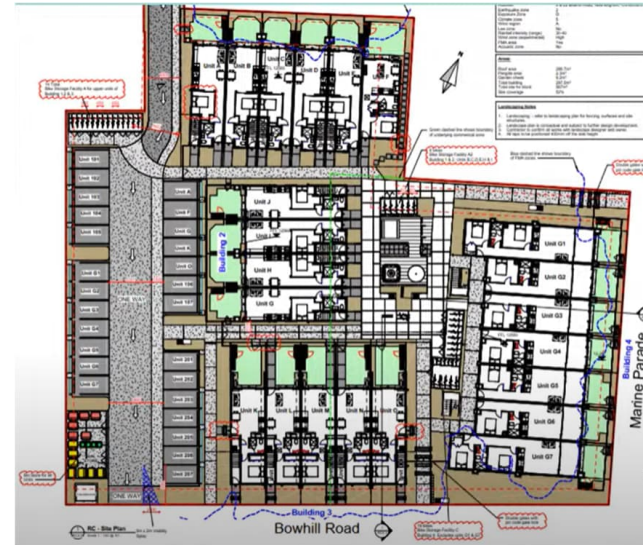
See Section 2, North Beach Parking Restrictions Memo

## Broadpark Rd and North Beach surrounding streets

Broadpark Rd overnight parking restriction trial



New residential development in wider area



See Section 4 and 5, North Beach Parking Restrictions Memo

## PROJECT UPDATES

1. QEII Park Development (Paths and Play Space)
2. Parklands Reserve – renewal of helicopter play module

09 June 2025

# 1. QEII Park Development

## Background

---

- Purpose of this workshop is to give an update around the current FY25 development activities at QEII Park
  - EXECUTE
    - Path network
  - PLAN
    - Play space
    - Basketball Court
    - Toilet
    - Implementation of tree plan in northern section
  - INVESTIGATE
    - Adventure Nature trail
    - Multi-sports field
    - Wetlands
    - Sports Pavillion
    - Car park

## EXECUTE – Paths network

- Path network delivered prior to FY25
- Paths completed Dec 2024 – March 2025
- Paths in progress, to be completed June 2025
- Path scheduled for FY26 (in line with play space construction)  
This is a new path, previously not included in the Parks Master Plan. Now included to mitigate the current desire line through the sports fields which has created a safety hazard. (Exact location may change subject to play space design)
- New entrance way and perimeter fence improvements



## EXECUTE – Paths network



## PLAN – Play space

- An updated concept plan is required for the play space:
  - to account for the new path
  - to incorporate play space design learnings of the past six years, including feedback received during consultation (e.g. play spaces network plan)
- The landscaping and general arrangement of the play space will be updated accordingly
- All key play elements of the original design will be retained in the updated concept plan



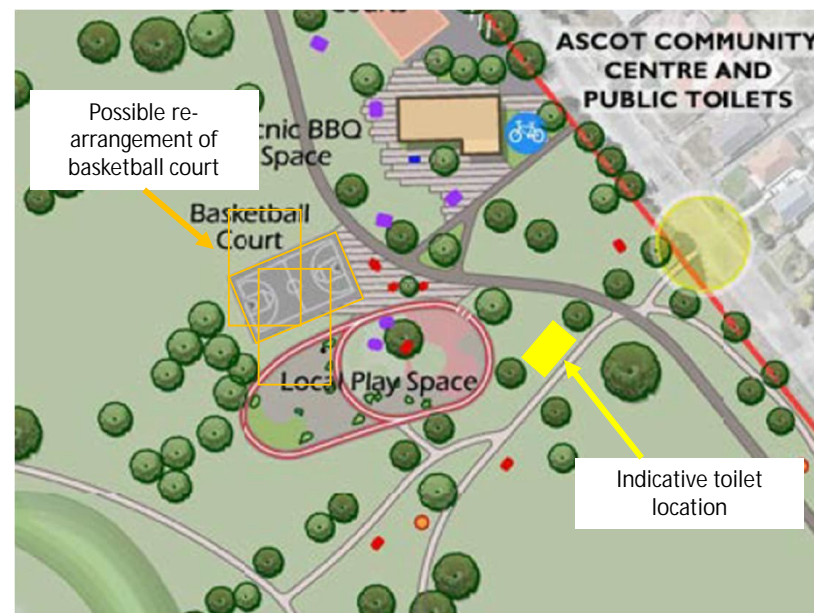
## PLAN – Basketball Court and toilet

### Basketball Court

- The basketball court location may change slightly due to play space re-design
- Once location is confirmed design will commence and construction is anticipated in line with play space

### Toilet

- The location of public toilets within the Ascot Community Centre were deemed unsuitable to cater for the new play space, basketball court and wider park due to the limited visibility.
- A new location is being investigated and a concept design is being developed.



➔ Staff will present a decision report for Community Board approval of the updated concept plan, most likely in August 2025.

## Indicative timeline of planned works

TASK	Jun	Jul	Aug	Sep	Oct	Nov	Dec
CB update							
<b>PLAY SPACE</b>							
Procurement (design&build)							
Update Concept Design							
Approval Concept Design							
Detailed Design							
Construction							
<b>BASKETBALL COURT</b>							
Update Concept Design							
Approval Concept Design							
Detailed Design							
Procurement							
Construction							
<b>TOILET</b>							
Update Concept Design							
Approval Concept Design							
Detailed Design							
Consenting							
Procurement							
Construction							

## INVESTIGATE – Adventure Nature trail

The wetland layout today is different from the Master Plan 2019 and investigation is underway to identify suitable elements for an adventure nature trail path within the western part of QEII.

More detail will be presented at a future meeting. Delivery is planned for late FY26 / early FY27.



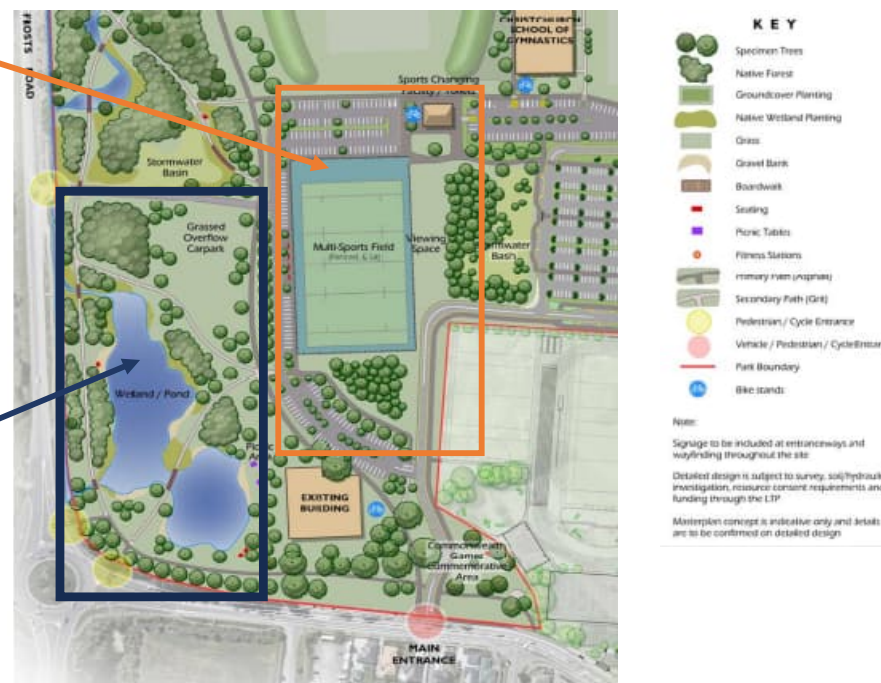
## INVESTIGATE – Multi-sports field, pavilion, car park and wetlands

Multi-sports field, pavilion and car park:

- Once we have information about lease – we can look to continue investigations into multi-sports field
- This impacts on Sports Pavillion and Carpark.

Wetlands:

- Land that has been set aside for current lease discussion – response was due 31/05/25, extended till Aug



## 2. Parklands Reserve – renewal of helicopter play module

## Parklands Reserve – helicopter play module renewal

- The helicopter play module at Parklands Reserve was installed in 1995.
- In the past there have been several repairs of the module with the maintenance need intensifying
- Latest snap send solve was received in Feb 2025 to notify of damages to the slide
- Upon inspection it was found that the slide was beyond repair and had to be removed
- The stairs on the back o f the helicopter had also detached and were removed
- The slide is of a length that can no longer be sourced and there is no compliant way to re-connect the steps
- What remains is an “empty shell” with limited play value



## Parklands Reserve – helicopter play module renewal

---

- At the Parklands/Queenspark Hui on 1 May at MP Davidsons office in New Brighton, we sought further information on the play module to better understand use of the play item and public view/perception
- Stakeholders noted that the playground is known by some as the “helicopter playground” (or sometimes the “tractor playground”) and that children love to just sit in the helicopter even without the slide
- While there was an interest to maintain the helicopter there was also acceptance that this may not be possible

## Parklands Reserve – helicopter play module renewal

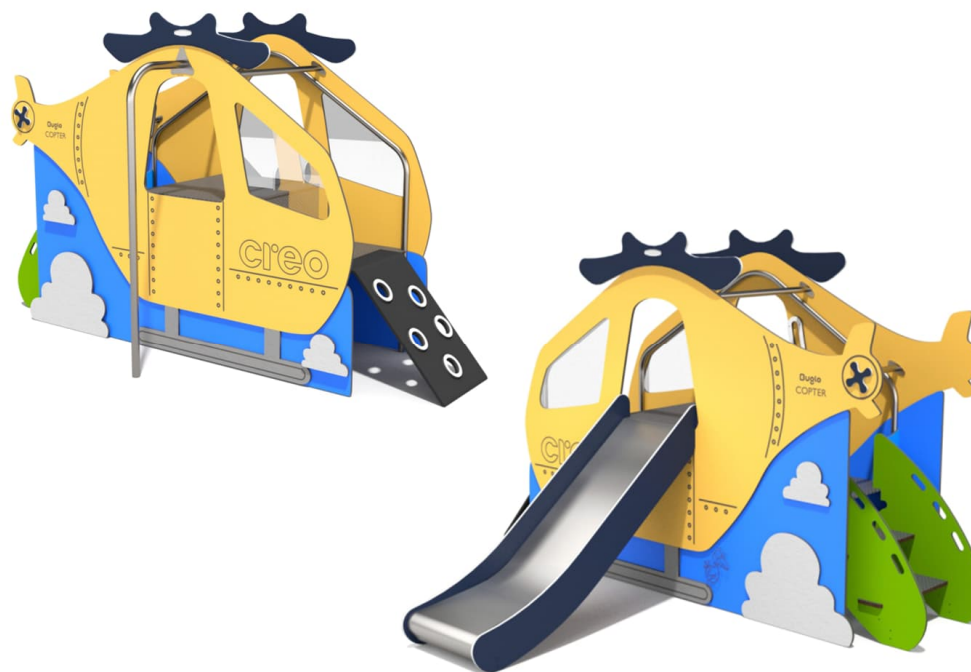
- A replacement item must fit into the existing space (footprint of approx. 7.5m x 6.5m)
  - The renewal will be funded from the “Community Parks Play Item Renewal” programme
  - Options for renewal were investigated, estimated cost range from \$8,600-\$29,000 (Freight and installation excluded)
- Staff seeking direction from Community Board on preferred renewal approach



## Parklands Reserve – helicopter play module renewal

### Option 1

- Maintain the helicopter theme



## Parklands Reserve – helicopter play module renewal

### Option 2

- Maintain the “flying” theme

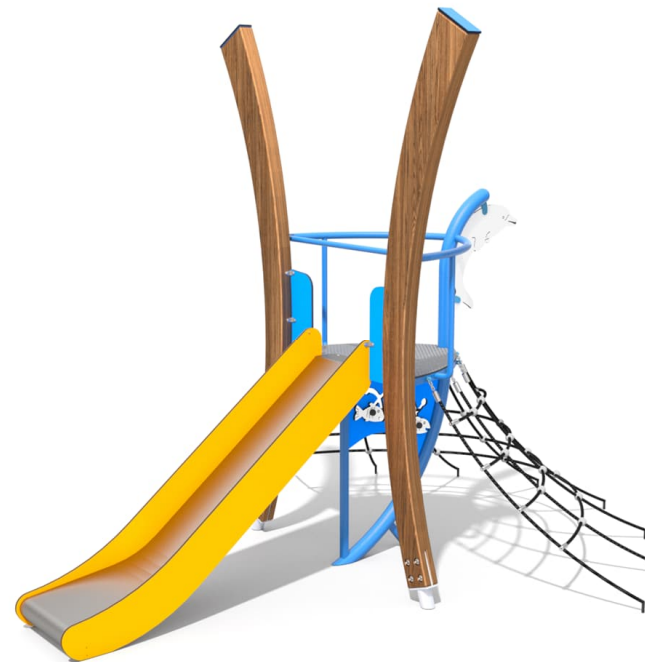


## Parklands Reserve – helicopter play module renewal

---

### Option 3

- Alternative junior play module



## Parklands Reserve – helicopter play module renewal

### Option 4

- Alternative junior play module
- Various design options available



## Parklands Reserve – helicopter play module renewal

### Option 5

- Alternative junior play module



Any questions?